

**CORBY**

TROUSER PRESS

[www.corbyofwindsor.com](http://www.corbyofwindsor.com)

## **THESE NOTES MUST BE READ BEFORE USE**

These instructions are for your safety. Please read through them thoroughly before use and retain for future reference. Failure to follow them could cause injury and/or property damage.

Before operation please check contents thoroughly and contact your supplier if any parts are missing or damaged. Please dispose of all product packaging responsibly.

These instructions are also available on our website.

## **A BRIEF HISTORY...**

Corby is an iconic brand of Britain, starting life as John Corby Limited in England in 1930 as a manufacturer of valet stands. Later improvements included the addition of a pressing area and the first Corby trouser press was launched. These subsequently became electrically heated during the 1960's, and the Corby Trouser Press we know and love today was born. After a period in Andover, Hampshire, in 2009 John Corby Limited became part of Fired Up Corporation Ltd and the company relocated to Huddersfield.

We are proud of our long and extraordinary history. It's part of our identity and part of what makes us unique. We continue to manufacture the world famous trouser press at home in the United Kingdom, along with a wide range of high quality in-room amenities for the hotel, commercial and leisure industries.

Each press is hand assembled and individually tested prior to dispatch from our factory.

## CONTENTS

### SECTION 01

Cautions	04-05
Important	06-07

### SECTION 02

Introduction	08
Identification	08

### SECTION 03

Assembling the Trouser Press	09
Wall Mounting	10-11
Electrical Connections	11
Operating Instructions	12
Cleaning and Maintenance	13
Contacts	16

# IMPORTANT SAFETY INSTRUCTIONS

## CAUTIONS

When using your appliance, basic precautions should always be followed, including the following:

## DO'S

- 
- Read ALL the instructions before using this appliance.
- 
- Only use this appliance for its intended purpose as described in this manual.
- 
- Check the appliance and the supply cord for damage regularly. If the supply cord becomes damaged, it must be replaced by a suitably qualified person using the same rated cable. Do not attempt to make repairs to the appliance.
- 
- Check your mains supply is the same as that indicated on the product before connecting.
- 
- Always install the appliance in accordance with this guide. If in doubt obtain expert advice.
- 
- Always make sure the electrical socket is accessible following a fixed installation (wall mounted).
- 
- Always disconnect the appliance from the electrical supply when not in use and before carrying out cleaning or maintenance.
- 
- Ensure that the appliance is used on a firm, flat surface.
-

- Check garments for compatibility before use to avoid damage to appliance or garment.

---

- Check all pockets are emptied of sharp objects that may damage the appliance.

---

- Close supervision is necessary for any appliance being used near children.

---

- This appliance can be used by children aged from 8 years and above and persons with reduced physical, sensory or mental capabilities or lack of experience and knowledge if they have been given supervision or instruction concerning use of the appliance in a safe way and understand the hazards involved.

## DON'T S

---

- Do not use the appliance in a bathroom or near any source of water.

---

- Do not leave the appliance unattended while connected.

---

- Do not use or store the appliance outdoors.

---

- To reduce the risk of electric shock, do not immerse the appliance in water or other liquids.

---

- Do not allow the supply cord to touch hot surfaces, let appliance cool completely before putting away. Loop cord loosely around appliance when storing.

---

- Do not operate appliance with a damaged cord, or if the appliance has been dropped or damaged. To reduce the risk of electric shock, do not attempt to repair the appliance, take it to a suitably qualified person for examination and repair. Incorrect reassembly or repair could cause a risk of fire, electric shock or injury to persons when the appliance is used.
- 
- When cleaning or storing away, always pull out the plug from the socket outlet. Never yank the cord to disconnect from the outlet, instead grasp the plug and pull to disconnect. Always allow the product to cool completely before storing away.
- 
- Do not touch hot surfaces i.e. heating pad.
- 
- Do not move the appliance whilst it is in use.
- 
- Children shall not play with the appliance. Cleaning and user maintenance shall not be made by children without supervision.
- 
- Do not wall mount the Executive or Executive+ models in the USA or Canada.
- 

## **SAVE THESE INSTRUCTIONS**

**For USA and Canada models only**


To reduce the risk of electric shock, this appliance has a polarized plug (one blade is wider than the other). As a safety feature, this plug will fit in a polarized outlet only one way. If the plug does not fit fully in the outlet, reverse the plug. If it still does not fit, contact a qualified electrician to install the proper outlet.

Do not change the plug in any way or attempt to defeat this safety feature.

**SERVICING OF DOUBLE-INSULATED APPLIANCES**

In a double-insulated appliance, two systems of insulation are provided instead of grounding. No grounding means is provided on a double-insulated appliance, nor should a means for grounding be added to the appliance.

Servicing a double-insulated appliance requires extreme care and knowledge of the system and should be done only by qualified service personnel.

Replacement parts for a double-insulated appliance must be identical to the parts they replace. A double-insulated appliance is marked with the words DOUBLE INSULATION or DOUBLE INSULATED. The symbol  may also be marked on the appliance.

## INTRODUCTION

Thank you for choosing this appliance. The appliance is designed to meet the most stringent quality, performance, and safety requirements. This guide aims to improve your understanding and appreciation of your new appliance by providing simple and informative use and care instructions.

## IDENTIFICATION

**CORBY**  
3300



**CORBY**  
4400



**CORBY**  
7700



**CORBY**  
EXECUTIVE



**CORBY**  
EXECUTIVE +



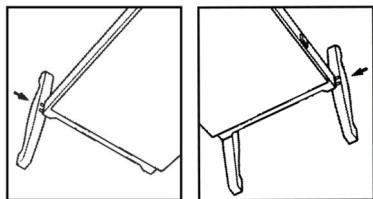


## ASSEMBLING THE TROUSER PRESS

(NOTE: If wall mounting following steps do not apply)

### FEET

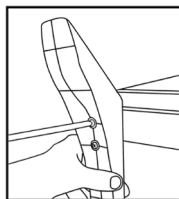
CORBYS 3300/4400/7700



- Place the LONGEST part of the foot at the FRONT of the press.
- Tilt the press to one side and slide the foot onto moulding, a sharp tap with the hand will click the foot into place.
- Turn the press over and repeat the procedure for the other foot.

CORBYS EXECUTIVE/EXECUTIVE +

Contents: 4 Bolts and 4 Washers



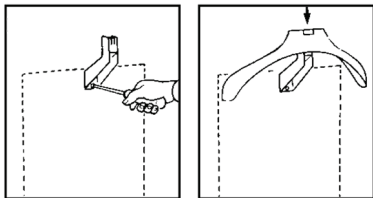
- Place the LONGEST part of the foot at the REAR of the press. Looking from the REAR of the press attach foot A to the Left and B to the Right.
- Place the press on its side to bolt the foot to the bottom of the press, making sure that the washer is between the head of the bolt and the foot.
- Turn the press over and repeat the procedure for the other foot.

### HANGER

ALL MODELS

Contents: 2 Hanger Screws

NOTE: Alternate hanger bracket on Executive+ uses same fixing method.



- Rest the hanger bracket on the small ledge provided at the rear of the press.
- This will align two of the holes in the bracket with two holes.
- Use the two screws provided to affix the hanger.
- Slide the hanger onto the bracket until it clicks into place.

## WALL MOUNTING

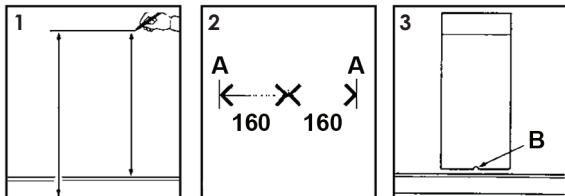
(NOTE: If Trouser Press is free standing following steps do not apply)

**WARNING:** Make sure the wall is suitable and that there are no hidden electricity, water or gas supply pipes or any other hidden services, if in doubt seek advice from a suitably qualified tradesman.

CORBYS 3300/4400

Contents: 2 large wall plugs, 2 large screws, 1 small wall plug, 1 small screw, 1 star washer.

NOTE: Screws and wall plugs supplied are suitable for most types of solid walls.

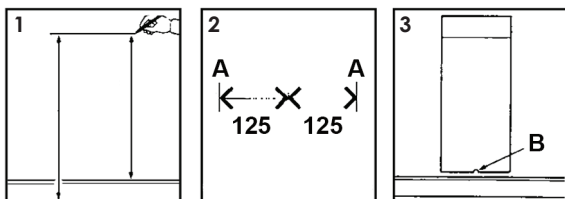


- Measure a point 940mm above the skirting board or a minimum of 1092mm above the floor and lightly mark with a horizontal line (Diagram 1).
- Mark the desired centre position of the press on the line.
- Mark points 160mm either side of the centre position (Point A on Diagram 2).
- Drill holes to suit the large wall plugs provided.
- Insert two large wall plugs into the holes and fit screws with 6mm protruding.
- Hang the press on the screws.
- Mark the position of retaining screw (Point B on Diagram 3).
- Lift press from the wall and drill hole suitable for the small wall plug at point B.
- Fit the small wall plug into hole.
- Insert the small screw into the plug at Point B with 10mm protruding.
- Hang the press on the screws.

CORBYS 7700

Contents: 2 large wall plugs, 2 large screws, 1 small wall plug, 1 small screw, 1 star washer.

NOTE: Screws and wall plugs supplied are suitable for most types of solid walls.



- Measure a point 940mm above the skirting board or a minimum of 1092mm above the floor and lightly mark with a horizontal line (Diagram 1).
- Mark the desired centre position of the press on the line.
- Mark points 125mm either side of the centre position (Point A on Diagram 2).
- Drill holes to suit the large wall plugs provided.
- Insert two large wall plugs into the holes and fit screws with 6mm protruding.
- Hang the press on the screws.
- Mark the position of retaining screw (Point B on Diagram 3).
- Lift press from the wall and drill hole suitable for the small wall plug at point B.
- Fit the small wall plug into hole.
- Insert the small screw into the plug at Point B with 10mm protruding.
- Hang the press on the screws.

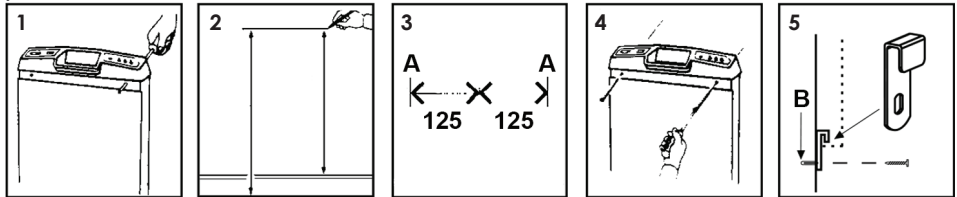
CAUTION: It is essential the Trousers Press is supported at ALL THREE fixing points, failure to do so can place unnecessary stress on the head of the press causing the unit to fail. Damage caused in this manner will invalidate any product guarantee/warranty.

CORBYS EXECUTIVE/EXECUTIVE +

Contents: 2 large wall plugs, 2 long screws,  
1 small wall plug, 1 small screw, 1 star washer,  
1 retaining bracket

NOTE: Screws and wall plugs supplied are suitable for most types of solid walls.

CAUTION: Due to building regulations the Executive/Executive+ is NOT suitable for wall mounting in the USA and Canada



- Push out wall-mounting tube caps from rear using a screwdriver (Diagram 1).
- Measure a point 940mm above the skirting board or a minimum of 1092mm above the floor and lightly mark with a horizontal line (Diagram 2).
- Mark the desired centre position of the press on the line.
- Mark points 125mm either side of the centre position (Point A on Diagram 3).
- Drill holes to suit large wall plugs provided.
- Secure Press to wall with long screws (Diagram 4), DO NOT tighten screws.
- At the rear of the press, hook the retaining bracket onto the inside lip at the bottom (Diagram 5) and mark point B.
- Lift press from the wall and drill hole suitable for the small wall plug at point B.
- Fit the small wall plug into hole.
- Hang press back on wall with long screws (Diagram 4), DO NOT tighten screws.
- Fix with a small screw through point B (Diagram 5).
- Tighten the top two screws (Diagram 4).

CAUTION: It is essential the Trousers Press is supported at ALL THREE fixing points, failure to do so can place unnecessary stress on the head of the trouser press causing the unit to fail. Damage caused in this manner will invalidate any product guarantee/warranty.

## ELECTRICAL CONNECTIONS

Double insulated products should in no circumstances be connected to earth as this could adversely affect the safety of the product.

### Europe

IMPORTANT If you replace the plug it must be wired in accordance with the relevant colour code given below:

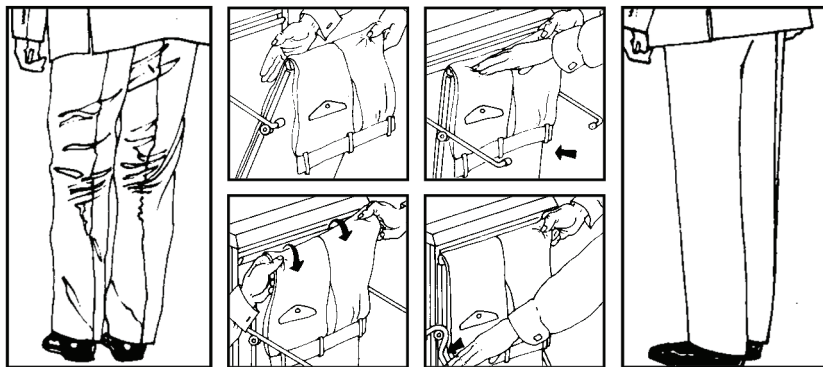
BROWN - LIVE (L)  
BLUE - NEUTRAL (N)

This product must be fitted with two core mains lead connected.

### UK, Republic of Ireland, Isle of Man and Channel Isles

Your press should be fitted with a 3-pin BS 1363A 13 amp plug fitted with a 3 amp BS 1362 ASTA approved fuse. If any other plug or connection type is used then there must be a 5 amp fuse in the plug adaptor or distribution board. Fitting a fuse of higher rating may invalidate your guarantee. If you remove the plug from the mains lead, please destroy as exposed wires will become live if the plug is inserted into a mains socket.

## OPERATING INSTRUCTIONS



### CONSIDERATIONS BEFORE USE

Using your Corby press daily will add to the life and appearance of your trousers.

Your Corby is safe to use on any material which you would normally iron, however, you should check for any special instructions before pressing. One of the benefits of your Corby is that it will not impart a surface shine on the material, something which can occur after repeated ironing. The inherent humidity content of natural and mixed fibres assists the pressing process, however, some man-made fibres, such as polyester, resist humidity and may therefore require extra pressing.

On no account should any trousers be dampened before pressing.

Please press one pair of trousers at a time, ensuring that all pockets are emptied of keys, coins or other sharp objects as they could damage the heating pad.

### INSERTING TROUSERS

- Raise the lever arms and the press to reveal the heating pad.
- The pad is cushioned to accept different fabric thickness and raised seams.
- Insert trousers "feet" first into the base of the press.
- Smooth trousers into position, ensuring existing creases are in line.
- Firmly grip top of trousers, gently pulling while closing the press.
- Push down on one of the lever arms to lock into position

### CORBY 3300

- Press the ON/(cancel) button to run a 30 minute cycle (LED on).
- Press the ON/(cancel) button again to cancel the cycle at any point (LED off).

### CORBY 4400

- Select required time by pushing 15 or 30 minute buttons (LED on).
- Press the ON/(cancel) button to run cycle (LED on).
- Press the ON/(cancel) button again to cancel the cycle at any point (LED off).

*(When canceled the ON/cancel LED will go out but the time selection will remain on for 5 minutes allowing opportunity to restart the cycle)*

### CORBY 7700/EXECUTIVE/EXECUTIVE +

- Select required time by pushing 15, 30 or 45 minute buttons (LED on).
- Press the ON/(cancel) button to run cycle (LED on).
- Press the ON/(cancel) button again to cancel the cycle at any point (LED off).

## CLEANING AND MAINTENANCE

When cleaning, or storing away, always pull out the plug from the socket outlet. Never yank the cord to disconnect from the outlet, instead grasp the plug and pull to disconnect.

Always allow the product to cool completely before cleaning.

The inside of the front-board may be wiped with a dry cloth, but no polish or cleaner should be used on the inner front-board or heating pad surface.

You will extend the life of the heating pad if you take care not to leave the press switched on with the front-board open.

Check the appliance and the supply cord for damage regularly. This appliance is NOT user serviceable. If the supply cord becomes damaged, it must be replaced by a suitably qualified person using the same rated cable.





International Testing Authorities have awarded the right to use the following symbols of approval to the Corby electric trouser press:



In line with European measures to limit damage to the environment caused by waste electrical items, Corby urge you to responsibly dispose of this item at the end of its useful life by taking it to a recycling facility.

#### CUSTOMER HELPLINE



08448 809 301



customer.support@firedupgroup.co.uk



[www.firedupgroup.co.uk](http://www.firedupgroup.co.uk)

Fired Up Corporation Ltd.  
Fired Up Buildings  
St Thomas Road  
Huddersfield  
HD1 3LF  
United Kingdom