

The background is a dark blue gradient with a subtle pattern of white dots. Overlaid on the left side are several concentric circles and a large circular scale with degree markings from 140 to 260. Some circles have arrows indicating a clockwise direction. The text is positioned on the right side of the image.

CODES AND CONVENTIONS OF A THRILLER GENRE

WHAT IS A THRILLER?

A thriller is a novel, play, or movie with an exciting plot. It often revolves around anticipation and suspense, with the aim being to keep the audience alert and on the edge of their seats. Tension and excitement are often used as the main elements of thriller films.

Action and adventure thriller



Psychological thriller



Psychological thriller



Psychological thriller

Sci-fi thriller

Religious thriller

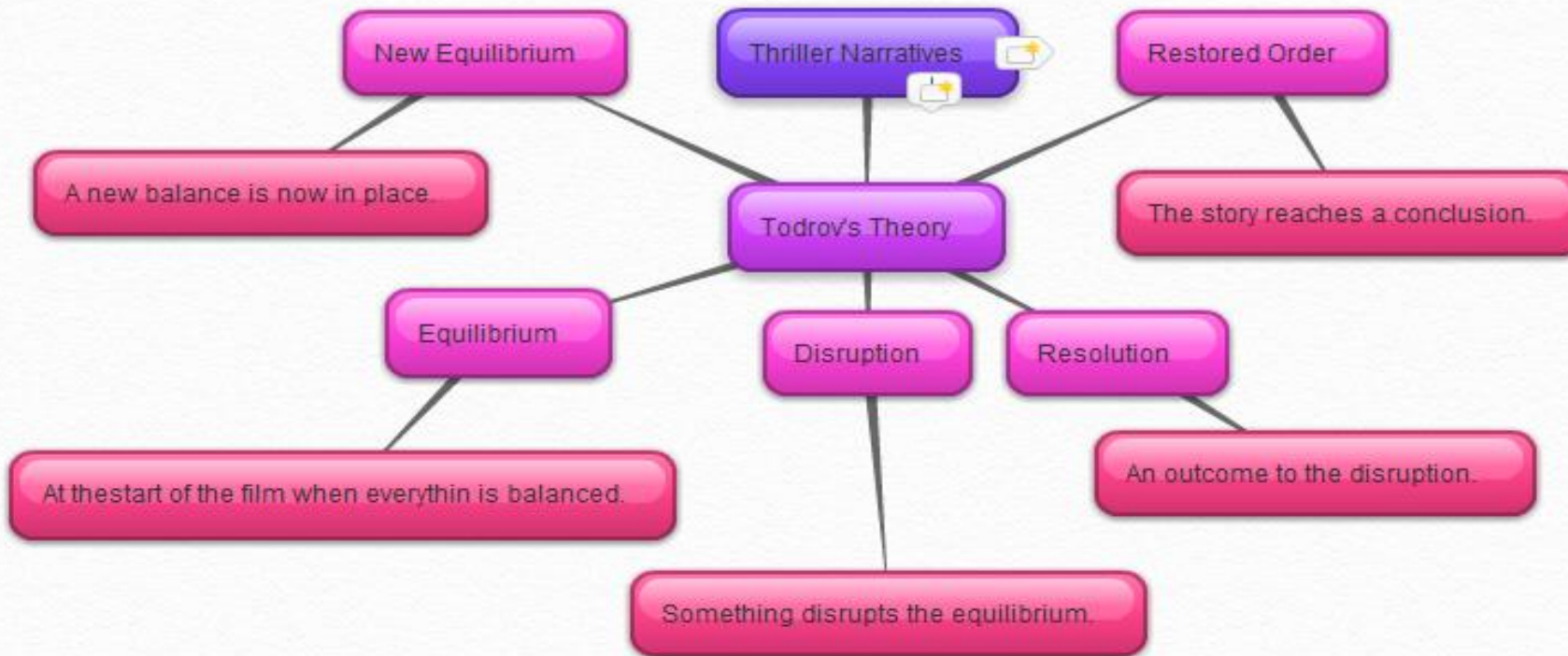
THEMES OF A THRILLER



A word cloud of thriller themes on a dark blue background with circular patterns. The words are in various colors (pink, purple, blue, black) and sizes, arranged in a dense, overlapping cluster. The words include:

- events
- terrorism
- Conspiracy
- Enigmas
- leading
- triangles
- political
- romantic
- Chase
- mind
- quest
- system
- puzzles
- conspiracy
- murder
- games
- Crime
- solved
- Psychological
- figures
- pursuit
- Supernatural
- Assassination
- Spies
- Suspense
- Lone

THRILLER NARRATIVE



ICONOGRAPHY

The typical things you expect to see within a thriller.

Confined/claustraphobic spaces



Transformers: Dark of the Moon | Bumblebee Captured | No Prison...

Guns



The Island Trailer

Cars



Fast & Furious 6 - Final Trailer

Knives



Orphan - Esther kills daddy (HD)

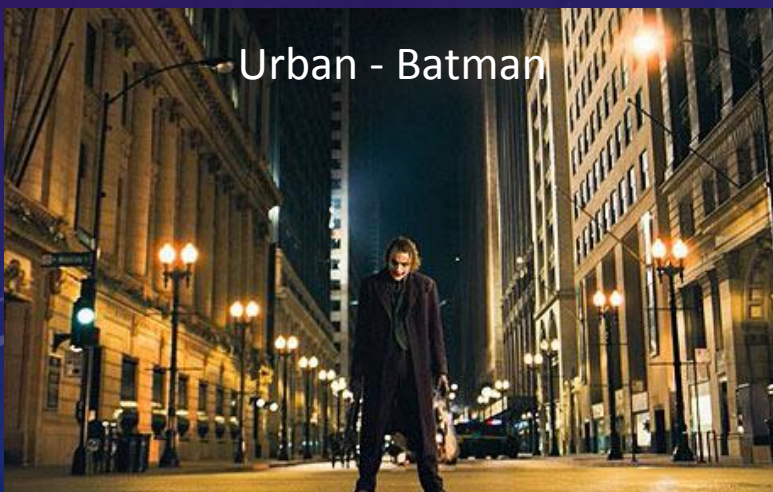
SETTING

The setting of a film is important, especially within the thriller genre, as the setting is almost like an extra character within the story.

Examples of setting:

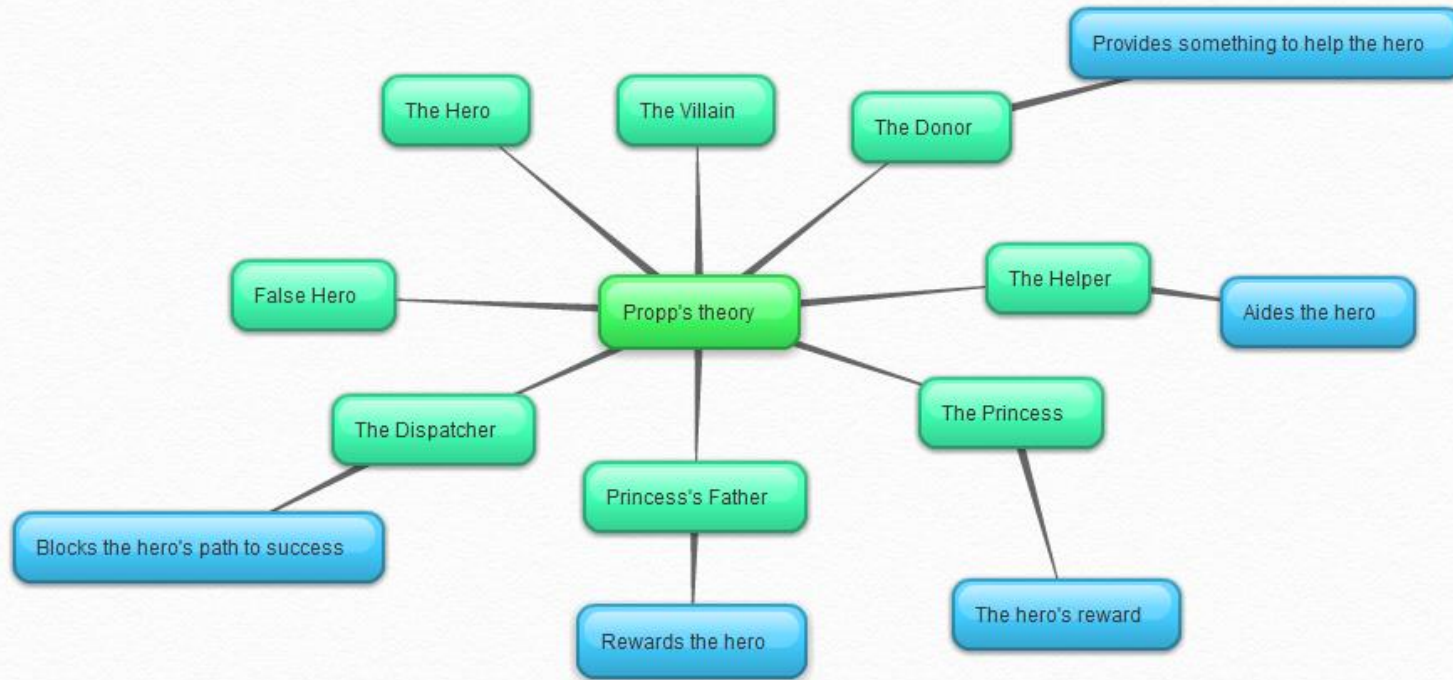
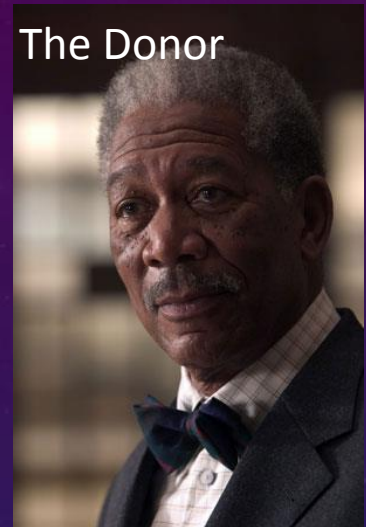


Desert – Transformers



Snow – The day after tomorrow

CHARACTERS WITHIN A THRILLER



SUB GENRES OF THRILLER

- A sub genre is an identifiable type of horror.

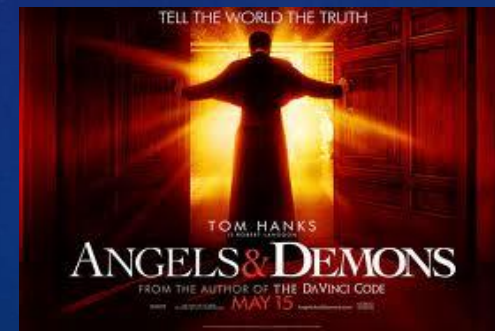
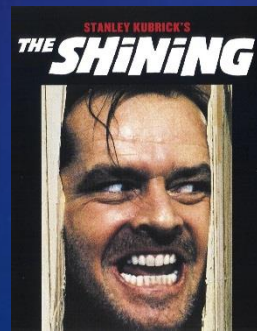
Action thriller – uses physical action between characters and objects to create suspense within the film e.g. Kill Bill Vol.1.

Crime thrillers – combines suspenseful qualities of a thriller with a plot from a crime film e.g. The Dark Knight Rises.

Psychological thrillers – incorporates elements of drama and mystery to a film and explores the processes of the mind, which helps create suspense from the mind rather than a physical feeling of suspense e.g. The Shining.

Science-Fiction thrillers – merges science based themes into the plot of the film e.g. Super 8.

Religious thrillers – uses religious themes, objects, and ceremonies during a film e.g. Angels and Demons.



THRILLER HYBRIDS

Thrillers often come in the form of hybrids. A hybrid is when you take two or more elements from a genre and included in one film.



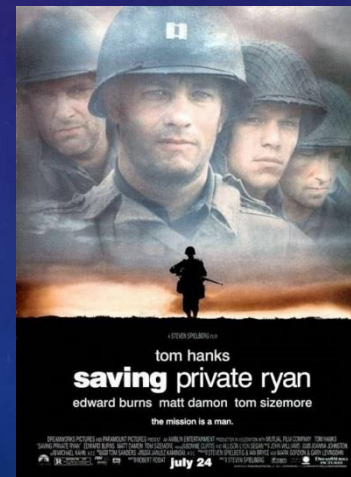
Western



Drama



Science-fiction



War



Romantic



Action and Adventure

CODES AND CONVENTIONS



A word cloud of film editing terms is displayed on a dark blue background with faint circular patterns. The words are arranged in a circular, overlapping fashion, each in a different color and font style. The central word is 'editing' in a large, purple, serif font. Other words include 'Black' (pink), 'Disorientation' (blue), 'Lighting' (pink), 'music' (blue), 'Quick' (pink), 'space' (teal), 'white' (purple), 'Tension' (red), 'Obtrusive' (purple), 'Flashbacks' (green), 'Mirrors' (teal), 'cuts' (purple), 'camera' (purple), 'Changes' (blue), 'angles' (teal), 'Montage' (red), 'Shadows' (pink), and 'time' (purple).

angles Black Disorientation Lighting music editing Quick space white Tension Obtrusive Flashbacks Mirrors cuts camera Changes Montage Shadows

MIRRORS

Within thriller films mirrors are used to portray the reflections of a persons soul and their inner self. Mirrors can also foreshadow the darkness within certain characters expressing inside emotions they may not want to reveal.

Black Swan – *Nina shows fear as her dark soul is staring at her with piercing eyes from within the mirror.*



LIGHTING

Low key lighting:

- Created by the use of a back light - mainly used in thriller films.
- Used to represent a dark atmospheres which can be seen as scary or mysterious.
- Dramatic effect as lighting reflects onto the characters and the atmosphere.



An example of low key lighting from 'I am legend'

SHADOWS

An example of a successful use of shadows is from the thriller film 'Nosferatu'



Click to open the link

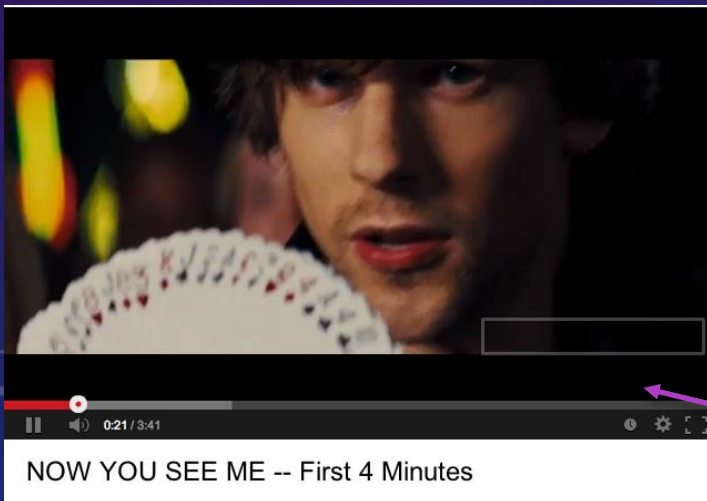
SOUND

The use of sound within the thriller genre is an important element, as different musical themes within a film can produce different moods that affect the audience in different ways. For example in Alfred Hitchcock's 'Psycho' the music is high pitched, adding suspense and tension to the film, whereas more action thriller films use loud and jumpy fast paced music to make the audience feel excited, and to emphasise the fast pace of the film.

Click to open



CAMERA ANGLES



Thriller films include the use of camera angles to show different facial expressions and body language. By using a wide range of camera angles this can help capture every emotion present within a film, making the audience feel like they are observing alongside during the duration of the film.

Click to open

EVALUATION

To conclude, by conducting research about the codes and conventions of a thriller genre I have learnt that they play a key part within the thriller genre by helping create suspense and tension, which are used to keep the audience engaged throughout the film. Codes and conventions are also what makes a film so mesmerizing, keeping audiences at the edge of their seat constantly waiting for something to happen due to whatever codes and conventions are present within that film.