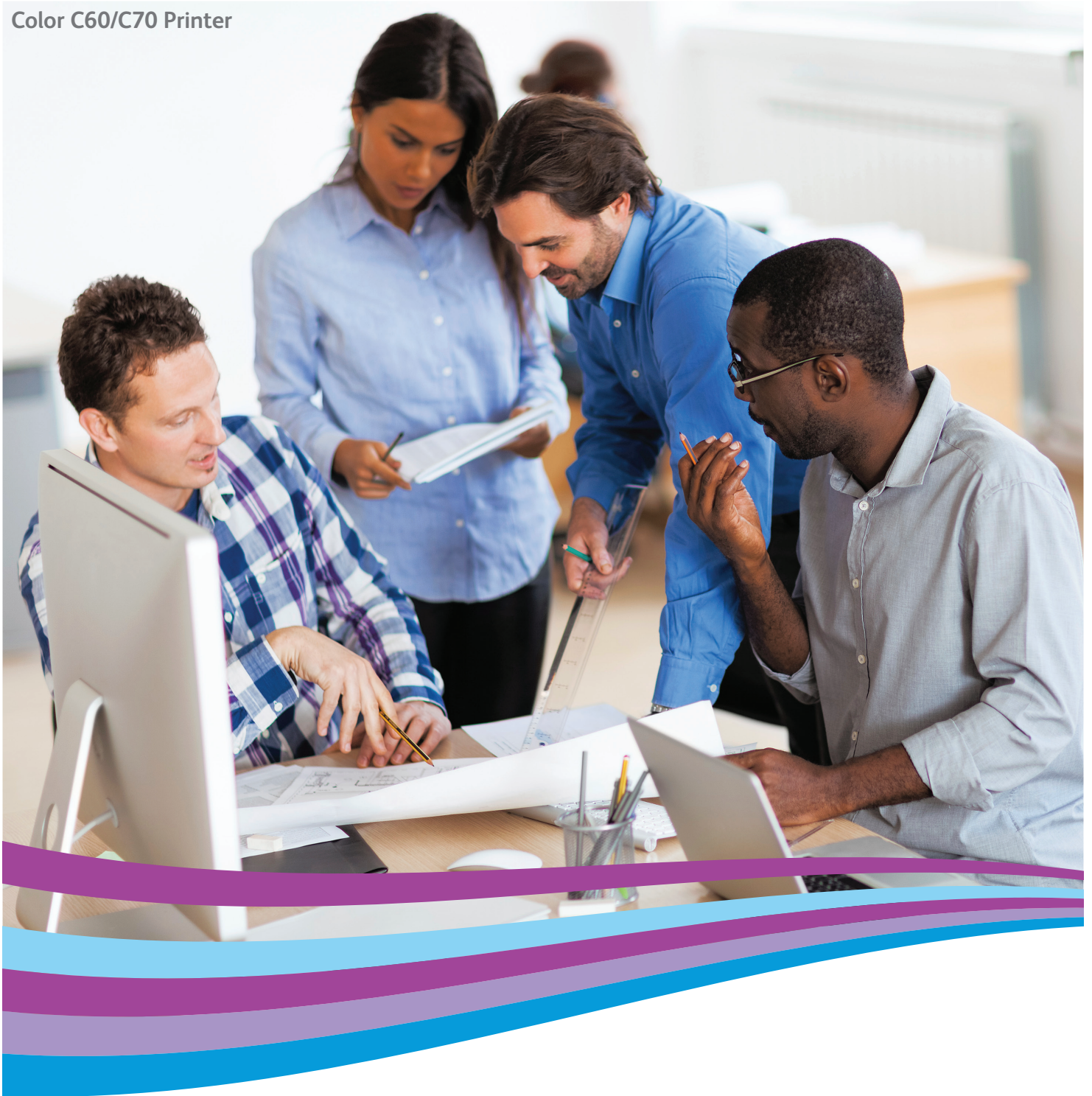


Color C60/C70 Printer



# Color C60 / C70 Printer

Amazing flexibility and the power to do more.

**FUJI xerox** 



## Productivity, scalability and professional image quality, all-in-one.

The Color C60/C70 Printer provides application versatility and professional image quality, and is flexible enough to grow with your business. It's an all-in-one solution that can boost productivity in any environment.

### Color C60/C70 Printer Quick Facts

- **Speed:** Up to 60/70 ppm colour and 65/75 ppm black and white
- **Single-pass Scanner:** Up to 200 images per minute (ipm)
- **Resolution:** 2400 x 2400 dpi
- **Toner:** Fuji Xerox Emulsion Aggregation (EA) Toner with ultra-low melt technology
- **Media Weights (Maximum):** Up to 300 gsm and up to 220 gsm for auto duplexing
- **Media Sizes:** Up to 13 x 19.2 in. / SRA3+ / 330 x 488 mm

### A flexible and affordable solution from the start.

Your teams want the flexibility and productive workflow of a multifunction device. Your graphics, creative and production teams want a higher level of quality and finishing. The Color C60/C70 Printer offers the best of all worlds.

The Color C60/C70 allows you to print, copy and scan – including scan and print with PC, USB or email. It can even print from virtually any smart phone or tablet. That's how the Color C60/C70 boosts any team's efficiency.

### Capture new business and keep high-value colour printing in-house.

- Print at up to 60/70 pages per minute colour and up to 65/75 pages per minute black and white. And with easy set-up and automated workflows, you can handle quick turnarounds in style.

- Media versatility – both coated and uncoated stocks up to 300 gsm.
- Inline finishing options offer a professional polish with stapling, hole-punching, folding and face trimming for presentations, brochures and reports.
- A choice of print servers allows you to boost colour management and streamline labour-intensive processes.
- Variable data capabilities let you capitalise on personalised applications for direct mail.

### Exceed expectations.

The Color C60/C70 Printer is engineered to bring out the best in digital printing. Whether you need to create a customer brochure, a captivating proposal or presentation, an eye-catching poster, or even window decals or polyester signs, you get stunning results every time.

# Transform – and work simpler, smarter.

**When work gets simpler, people are more productive.** The Color C60/C70 Printer simplifies the process of capturing, editing and storing documents – all the tools you need to get quality work done more efficiently.

## Capture productivity.

- **True multitasking.** Scan, print, copy, all at once. Preview scans on-screen and avoid mistakes.
- **Save time and steps.** The Color C60/C70 offers superior scanning and allows you to send the files anywhere. Email, store to folder, to PC, to USB. Create a searchable PDF or XDW in one simple step.
- **Make it personal with XMPie®.** With variable data printing software from industry-leader XMPie®, you can expand into high-value variable applications – with low-cost and with ease.

## Secure and confident.

- **Private Charge Print, Charge Print and Secure Print.** Keep documents private by holding print jobs in the queue until the user enters the password.
- **Password protected PDFs.** This feature requires a password to open and view a sensitive scan.
- **Standard 256-bit encryption.** The gold standard in keeping your data secure – Image Overwrite. Automatically erases images on the device.

## Control and track costs easily.

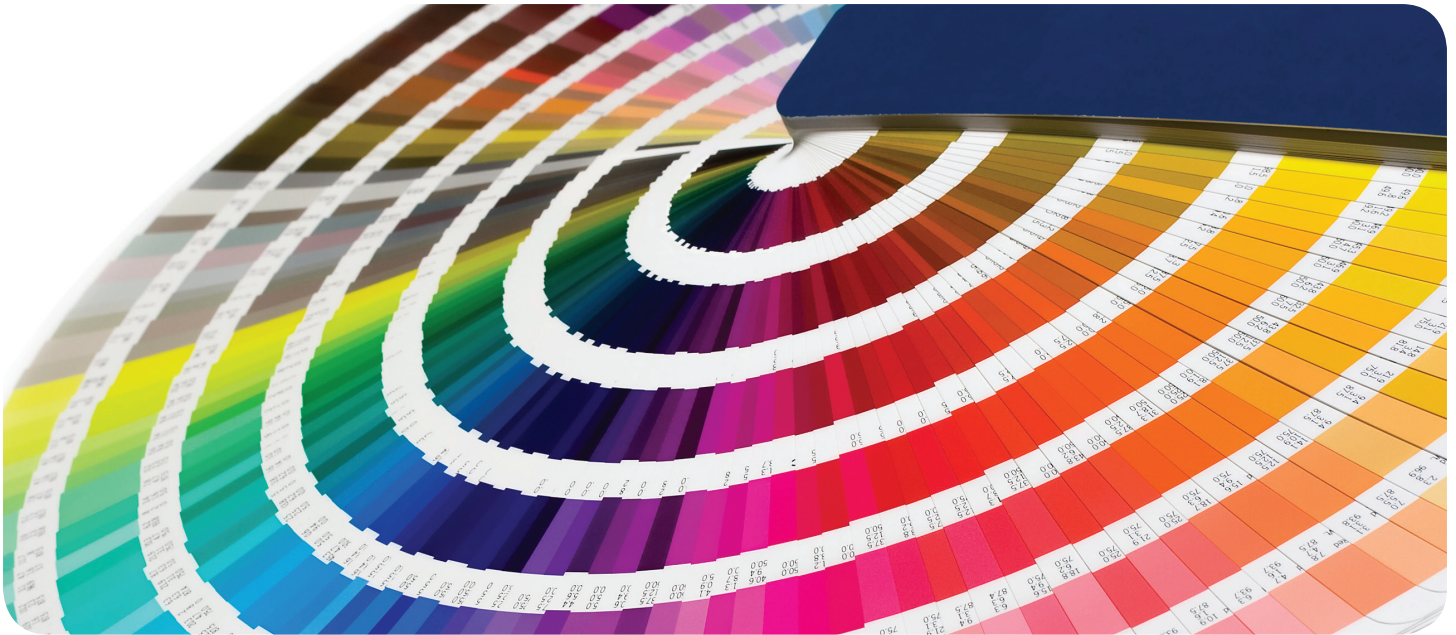
- **Xerox® Standard Accounting.** This software is a standard feature that resides locally on the device. It provides superior accounting features that lets you track, analyse and limit device usage. It lets you know where your costs are coming from so you can take control of them.



Color C60/C70 Printer  
with High Capacity Feeder B1



Color C60/C70 Printer  
with High Capacity Feeder B1-S and C3 Finisher



# Promote your image and stand out from the crowd.

Benchmark image quality that you expect. Results that truly delight.

## Innovation comes standard.

- **Vibrant colour and incredible detail.** With our 2400 x 2400 dpi resolution, images are rich with crisp text so your output will always impress.
- **Excellent image quality.** Our Emulsion Aggregation (EA) Low Melt Toner technology is chemically grown, so the small, consistent particles produce great quality with smooth transitions and an offset-like finish.

## It's your image. Unleash your creativity.

- **Match company colours, logos and offset presses.** The Color C60/C70 Printer offers licensed PANTONE® matching for spot colours to the PANTONE MATCHING SYSTEM®, PANTONE GOE™ and PANTONE PLUS. It's also Fogra Certified for matching offset colour presses.
- **True Adobe® PostScript® 3™ certification and the latest Adobe PDF Print Engine (APPE).** These features plus blazing speeds means your creativity is never restricted.



## Control quality and save time with Advanced SIQA\*.

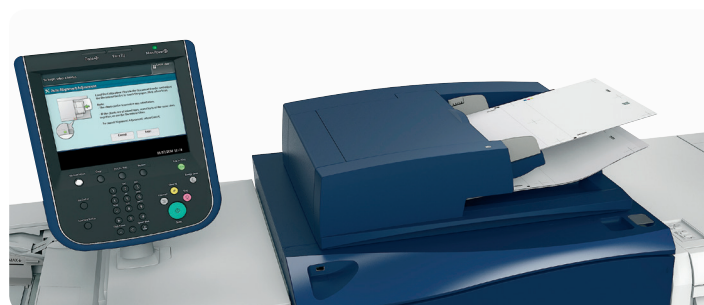
Advanced SIQA can save you from the hassle of adjusting alignment, density uniformity or transfer voltage. By simply scanning the printed charts, advanced SIQA will optimise the adjustment values. With advanced SIQA, operators no longer have to go through the time-consuming and iterative procedure of having to print, measure and manually adjust individual settings. The Color C60/C70 Printer reduces waste and a considerable amount of operator intervention while consistently meeting image quality expectations.

\*Simple Image Quality Adjustment.

## Transfer voltage adjustment function

If a toner image is not optimal when transferred onto paper, you can adjust the transfer voltage by scanning the printed chart.

Determining the optimal transfer voltage is often very taxing. Advanced SIQA automatically analyses the scanned measurement chart and selects the values with the best balance for each colour. This both simplifies the adjustment process, while ensuring outstanding image quality on a range of stocks, including special stocks that are hard to handle.



Advanced SIQA performs Alignment Adjustment by scanning the chart with Document Feeder or Document Glass.

\* Density Uniformity Adjustment and Transfer Voltage Adjustment are performed by scanning the chart with Document Glass.

# Whatever the size and scope of your work, we'll fit your needs.

## Feeding Options



- 1 High Capacity Feeder B1:**  
Adds 2000 sheets of A4 up to 220 gsm.



- 2 High Capacity Feeder B1-S:**  
Adds 2000 sheets  
Max. 330x488 mm  
(A3, SRA3, 13x19") up to 300 gsm.



- 3 High Capacity Feeder C1-DS:**  
Adds 2000 sheets each tray  
(4000 sheets total)  
Max. 330x488 mm  
(A3, SRA3, 13x19") up to 300 gsm.

## Finishing Options



- 4 Offset Catch Tray:** 500 sheet stacking.



- 5 C3 Finisher:** Gives you advanced finishing function at a great value – offsetting, hole punch, staple (1,2 staple) plus stacking 3000 sheets and available Tri-Fold\* / Z Fold\*.  
\* Requires optional Folder Unit CD1.



- 6 C3 Finisher with Booklet Maker:** Provides all the advanced finishing of the C3 Finisher with additional booklet making capabilities.



- 7 GBC® AdvancedPunch™\*:** Lets you create professionally bound documents in-house by combining printing, punching and collating into one convenient step.  
\* Requires Finisher D4 with or without Booklet Maker and also Interface Module.



- 8 Finisher D4 with or without Booklet Maker:** This finishing module enables coated booklets, brochures and bi-fold mailers as well as stacking, stapling and hole punching. It also includes an interposer input tray. Even more versatility can be obtained with the addition of the optional tri-fold, Z Fold and Z Fold Half Sheet features for this finisher.  
\* Requires optional Folder Unit D4.



- 9 SquareFold® Trimmer\*:** Enhances the power of the Finisher D4 with booklet maker with square fold of cover sheets and face trimming to produce booklets.  
\* Requires Finisher D4 with Booklet Maker and Interface Module.

## Finishing Applications



Sort and Collate



Staple



2/3 Hole Punch  
2/4 Hole Punch



Punch



Saddle Staple



Booklet



Middle Fold



Single Fold



Z Fold



Tri-Fold



Z Fold Half Sheet



Trim



Square Fold

# Print servers to fit every workflow.

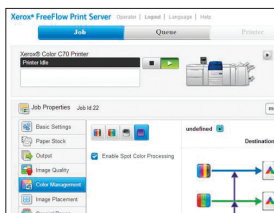
We offer a choice of print servers, so you're sure to find one that fits.

## Integrated Server

Count on superior colour and high-end workflows.

### FreeFlow Print Server Integrated for the Color C60/C70 Printer

All the advantages of Fuji Xerox Production workflows – delivered in a compact, value oriented package.



### EX-i C60/C70 Print Server Powered by Fiery

World-class colour and workflow tools that put you in command.



## External Server

Powerful server with colour tools, workflow capabilities, and blazing speed, all at your fingertips. The ultimate in control and consistency.

### EX C60/C70 Print Server Powered by Fiery

Fiery® technology increases your profits by delivering high-impact documents with vibrant images and colour that exceed your customers' expectations.



The Adobe PDF Print Engine – or APPE – is the gold standard in PDF processing, producing PDF files that flow through your shop with a minimum of intervention. No more transparency problems. No more colour matching challenges. Instead, you will see faster turnarounds, more accurate results – and more returning customers.



# Create exciting new applications – easily finished inline.

**The printing world is exploding with new applications and new ways to use colour, media and finishing.** The superb image quality, robust media latitude, flexible finishing options, modularity and server options of the Color C60/C70 Printer, integrated with enterprise workflows, make it the perfect device for capturing new business, keeping more applications in-house.

## Grab their attention.

The Color C60/C70 allows you to think big. Print signs, ID Cards, Window Clings, Labels and Polyester Synthetics. Add impact to your special events with vivid, full colour, high image quality signage and Point of Sale materials.

Our special polyester EA Low Melt Toner fuses the output to polyester using a proprietary chemical bonding methodology, ensuring superior image quality on specialty substrates including polyester and more.



## Production printing with enterprise workflows at an affordable price.

Image quality, ease of use, productivity, media latitude, feeding and finishing options, plus world-class workflow solutions are at your fingertips. Grow your digital colour printing capabilities and reduce costs with the Color C60/C70 Printer.

- **Brochures** – easily create professional, colourful brochures with productivity-boosting inline folding and square fold trimming.
- **Presentations / Newsletters** – inline stapling and hole punching makes producing presentations and newsletters quick and easy.
- **Manuals and Reports** – inserted tabs keep annual reports and financial reports organised, while stapling and GBC® AdvancedPunch™ hole-punching keep pages secure.
- **Posters** – expanded media range lets you run eye-catching posters on sturdy coated media – up to 330x488 mm. (13x19", SRA3 can be printed)
- **Specialty Media and Photo Specialty applications** – impeccable colour and photo-finish image quality will keep customers coming to you for all today's latest photo applications



## Technology

- Load-while-run toner and paper capability
- Line Screens 600, 300, 200 and 150 Clustered Dot, 200 Rotated Line Screen
- EA low melt toner
- Built-in decurling for coated / heavy-weight media (Finisher D4 and Interface Module)
- Auto-Duplex copying available up to 256 gsm

## Durability

- Duty Cycle\*:300000

\* Duty cycle - Maximum volume capacity expected in any one month. Not expected to be sustained on a regular basis.

## Graphic Arts Credentials

- Fogra certification, PANTONE® Matching System
- PANTONE® GOE™, PANTONE® Plus

## Specifications for the Color C60 / C70 Printer

### Basic Specifications/Print Function

| Item                        | Color C60 Printer   | Color C70 Printer   |
|-----------------------------|---|---|
| Colour Capability           | Full colour   |   |
| Printing Resolution         | 2400×2400 dpi   |   |
| Continuous Print Speed*1    | [Colour] A4: 60 ppm, A3: 30 ppm<br>[B / W] A4: 65 ppm, A3: 33 ppm   | [Colour] A4: 70 ppm, A3: 35 ppm<br>[B / W] A4: 75 ppm, A3: 37 ppm |
| Paper Size*2                | [Tray 1]<br>Standard size: Max. A3, Min. A5<br>Custom size: 140 × 182 mm to 330 × 458 mm<br>[Tray 2]<br>Standard size: Max. A3, Min. A5<br>Custom size: 140 × 182 mm to 297 × 432 mm<br>[Tray 3, 4]<br>A4, Letter, B5<br>[Bypass Tray]<br>Standard size: Max. A3, Min. A6<br>Custom size: 140 × 182 mm to 330 × 488 mm  |   |
| Paper Weight                | [Tray 1, 2, 3, 4]<br>64 to 220 gsm<br>[Bypass Tray]<br>64 to 300 gsm*3  |   |
| Paper Tray Capacity*4       | Standard: 500 sheets × 2-Tray+870 sheets+1140 sheets+Bypass Tray 250 sheets<br>Optional functions: High Capacity Feeder B1 2000 sheets × 1-Tray<br>Optional functions: High Capacity Feeder B1-S 2000 sheets × 1-Tray<br>Optional functions: High Capacity Feeder C1-DS 2000 sheets × 2-Tray<br>Maximum Paper Capacity: 7260 sheets (Standard + High Capacity Feeder C1-DS) |   |
| Output Tray Capacity*5      | 500 sheets (A3)   |   |
| Power Supply                | AC 220 - 240 V, 10 A, 50/60 Hz common   |   |
| Maximum Power Consumption*6 | 2.4 kW or less  |   |
| Dimensions*7                | W 1022 × D 804 × H 1392 mm  |   |
| Weight*8                    | 247 kg  |   |

\*1: When continuously printing a single document. 64 to 105 gsm, uncoated paper. Print speed may be reduced depending on conditions of output data, as well as on whether auto image quality adjustment is performed, on whether the job includes a mixture of paper sizes and types, and other reasons. \*2: Image loss width: Lead edge 4.0 mm, Tail edge 4.0 mm, Front 3.5 mm, and Rear 3.5 mm. \*3: Auto duplex printing is supported for paper weights ranging from 64 to 220 gsm. \*4: 80 gsm paper \*5: Catch tray. 80 gsm paper \*6: Main unit with catch tray. \*7: Includes main unit and control panel. Excludes output tray and external print server. With the Bypass Tray closed. \*8: Includes main unit, photoreceptor, and control panel. Excludes output tray, external print server, paper, and toner.

### Scan Function

| Item            | Description   |
|-----------------|---|
| Paper Size      | Max. 297×431.8 mm (A3)  |
| Scan Resolution | 600 × 600 dpi, 400 × 400 dpi, 300 × 300 dpi, 200 × 200 dpi                              |
| Scan Speed*     | B / W: 100 ppm<br>Colour: 100 ppm<br>(2 sided scanning B / W: 200 ppm, Colour: 200 ppm) |
| Scan Method     | Scan to Folder (TWAIN interface support), Scan to PC (FTP, SMB), Scan to e-mail         |

\* For A4 Long edge feed, 200 dpi, store to folder. The scanning speed varies depending on the documents.

### Copy Function

| Item                   | Description   |
|------------------------|---|
| Scan Resolution        | 600 × 600 dpi   |
| Printing Resolution    | 2400 × 2400 dpi (High resolution photo)<br>600 × 600 dpi (Text/Text-Photo/Photo/Map)            |
| First Copy Output Time | B / W: 4.1 sec. (A4 / Monochrome priority mode)<br>Colour: 6.5 sec. (A4 / Colour priority mode) |

### Duplex Automatic Document Feeder

| Item            | Description  |
|-----------------|--|
| Paper Size      | Standard size: Max. A3, Min. A5<br>Custom size: 139.7 × 210 mm to 297 × 432 mm |
| Paper Weight    | 38 to 200 gsm (Duplex: 50 to 200 gsm)  |
| Capacity*1      | 250 sheets   |
| Feeding Speed*2 | B / W: 80 ppm (A4 long edge feed)<br>Colour: 75 ppm (A4 long edge feed)        |

\*1: 80 gsm paper \*2: Copy mode

### High Capacity Feeder B1 (Optional)

| Item                | Description              |
|---------------------|--------------------------|
| Paper Size          | Max. A4, Min. B5         |
| Paper Weight        | 64 to 220 gsm*1          |
| Paper Tray Capacity | 2000 sheets × 1-Tray*2   |
| Dimensions          | W 389 × D 610 × H 377 mm |
| Weight              | 29 kg                    |

\*1: For uncoated paper. \*2: 80 gsm paper

### High Capacity Feeder B1-S (Optional)

| Item                      | Description  |
|---------------------------|--|
| Paper Size                | Standard size: Max. A3, Min. A6*1<br>Custom size: 100 × 148 mm to 330 × 488 mm*2 |
| Paper Weight              | 64 to 300 gsm*3  |
| Paper Tray Capacity       | 2000 sheets × 1-Tray*4   |
| Power Supply              | AC 100 - 120 V, 2.5 A / AC 220 - 240 V, 1.5 A, 50/60 Hz common                   |
| Maximum Power Consumption | 360 W or less  |
| Dimensions                | W 988 × D 762 × H 992 mm   |
| Weight                    | 160 kg*5   |

\*1: When Postcard kit is used. \*2: When loading custom size paper whose length in the paper direction is 100 to 182 mm, be sure to attach Postcard kit in the tray. \*3: For uncoated paper. \*4: 80 gsm paper \*5: The bypass tray and the Large Size UI Kit are not included.

### High Capacity Feeder C1-DS (Optional)

| Item                      | Description  |
|---------------------------|--|
| Paper Size                | Standard size: Max. A3, Min. A6*1<br>Custom size: 100 × 148 mm to 330 × 488 mm*2 |
| Paper Weight              | 64 to 300 gsm*3  |
| Paper Tray Capacity       | 2000 sheets × 2-Tray*4   |
| Power Supply              | AC 100 - 120 V, 5.0 A / AC 220 - 240 V, 3.0 A, 50/60 Hz common                   |
| Maximum Power Consumption | 720 W or less  |
| Dimensions                | W 988 × D 762 × H 992 mm   |
| Weight                    | 190 kg*5   |

\*1: When Postcard kit is used. \*2: When loading custom size paper whose length in the paper direction is 100 to 182 mm, be sure to attach Postcard kit in the tray. \*3: For uncoated paper. \*4: 80 gsm paper \*5: The bypass tray and the Large Size UI Kit are not included.

### Interface Module\* (Optional)

| Item         | Description  |
|--------------|--|
| Power Supply | AC 100 V, 2.5 A – AC 240 V, 1.5 A, 50/60 Hz common |

\* Interface Module is necessary for connecting the Finisher D4 to the Color C60/C70 Printer.

### Folder Unit CD1 (Optional)

| Item                      | Description                            |                  |
|---------------------------|--|------------------|
| Z fold half sheet         | Paper Size                             | A3, B4, 11 × 17" |
|                           | Paper Weight                           | 64 to 90 gsm     |
| Tri-fold                  | Paper Size                             | A4, Letter       |
|                           | Paper Weight                           | 64 to 90 gsm     |
| Paper Capacity*1          | Tri-fold                               | 30 sheets        |
| Power Supply*2            | AC 220 – 240 V, 0.5 A, 50/60 Hz common |                  |
| Maximum Power Consumption | 120 W or less                          |                  |
| Dimensions                | W 232 × D 726 × H 991 mm               |                  |
| Weight                    | 53 kg                                  |                  |

\*1: 80 gsm Paper \*2: Power supply separate from the main unit is required.

### Folder Unit D4 (Optional)

| Item              | Description               |                   |
|-------------------|---------------------------|-------------------|
| Z fold half sheet | Paper Size                | A3, B4, 11 × 17", |
|                   | Paper Weight              | 64 to 90 gsm      |
| Tri-fold          | Paper Size                | A4, Letter        |
|                   | Paper Weight              | 64 to 90 gsm      |
| Paper Capacity*   | Tri-fold                  | 30 sheets         |
| Dimensions        | W 200 × D 725 × H 1165 mm |                   |
| Weight            | 40 kg                     |                   |

\* 80 gsm Paper

# Specifications for the Color C60 / C70 Printer

## C3 Finisher (Optional)

| Item              | C3 Finisher   | C3 Finisher with Booklet Maker   |
|-------------------|---|--|
| Type              | Output Tray   | Sort / Stack   |
|                   | Finisher Tray   | Sort (Offset available) / Stack (Offset available)   |
|                   | Booklet Tray  | - / Sort / Stack   |
| Paper Size        | Output Tray   | Standard size: Max. A3, Min. A6 Custom size: 100 × 148 mm to 330 × 488 mm  |
|                   | Finisher Tray   | Standard size: Max. A3, Min. B5 Custom size: 203 × 182 mm to 330 × 488 mm  |
|                   | Booklet Tray  | - Standard size: Max. A3, Min. A4 Custom size: 210 × 279 mm to 330 × 457 mm  |
| Paper Weight      | Output Tray   | 64 to 300 gsm  |
|                   | Finisher Tray   | 64 to 300 gsm  |
|                   | Booklet Tray  | - 64 to 220 gsm  |
| Paper Capacity*1  | Output Tray   | 500 sheets (A4)  |
|                   | Finisher Tray   | [Without stapling]<br>A4: 3000 sheets<br>B4 or larger: 1500 sheets<br>Mixed size stacking*2: 300 sheets<br>[With stapling]<br>A4: 200 sets or 3000 sheets<br>B4 or larger: 100 sets or 1500 sheets   |
|                   | Booklet Tray  | - [Without stapling]<br>A4: 1500 sheets<br>B4 or larger: 1500 sheets<br>Mixed size stacking*2: 300 sheets<br>[With stapling]<br>A4: 200 sets or 1500 sheets<br>B4 or larger: 100 sets or 1500 sheets |
| Staple            | Capacity  | 50 sheets*4  |
|                   | Paper Size  | Max. A3, Min. B5   |
|                   | Position  | Single stapling, Dual stapling   |
| Punch             | Number of punch holes   | 2 / 4 or 2 / 3 (Optional functions)  |
|                   | Paper Size  | Max. A3, Min. B5   |
|                   | Paper Weight  | 64 to 200 gsm  |
| Booklet Finishing | Capacity  | - Saddle staple: 16 sheets*5<br>Middle fold: 5 sheets  |
|                   | Paper Size  | - Max. A3, Min. B5   |
|                   | Paper Weight  | - Saddle staple: 64 to 220 gsm*6<br>Single fold: 64 to 220gsm  |
| Dimensions        | W 840 × D 589 × H 1056 mm<br>W 1075 × D 726 × H 1056 mm<br>(With Folder Unit CD1) | W 898 × D 589 × H 1056 mm<br>W 1370 × D 726 × H 1056 mm<br>(With Folder Unit CD1)  |
|                   | Weight  | 45 kg, 101 kg (With Folder Unit CD1) 62 kg, 118 kg (With Folder Unit CD1)  |

\*1: 80 gsm Paper \*2: When larger size sheets are stacked on top of smaller size sheets. \*3: For 16 sheets/set booklet. Paper may not be accepted depending on paper type and other usage conditions. \*4: For 64 to 90 gsm paper. \*5: 15 sheets with a cover. \*6: When cover is applied, the staple capacity can decrease depending on type and weight of paper being used and other conditions.

## SquareFold® Trimmer\*1 (Optional)

| Item  | Description  |
|---|--|
| Paper Size                                  | Same as the paper size of the Finisher D4 booklet tray.                |
| Paper Weight                                | Same as the paper weight of the Finisher D4 booklet tray.              |
| Number of sheets for trim and square fold*2 | 5 to 20 sheets   |
| Trim Dimensions                             | 2-20 mm  |
| Booklet Tray Capacity*3                     | 20 sets (15 sheets bind and below), 15 sets (16 sheets bind and above) |
| Power Supply                                | AC 100 V, 0.8 A - 240 V, 0.4 A, 50/60 Hz common                        |
| Maximum Power Consumption                   | 192 W or less  |
| Dimensions                                  | W 1272 × D 725 × H 552 mm  |
| Weight                                      | 100 kg   |

\*1: SquareFold® Trimmer requires Finisher D4 with Booklet Maker and Interface module. \*2: Requires saddle staple. \*3: When cover is applied, the staple capacity can decrease depending on type and weight of paper being used and other conditions.

### Notes

- To comply with paper weight specifications, it is recommended to use Fuji Xerox recommended paper. Document may not be printed correctly depending on usage conditions.
- The minimum availability period for functional spare parts that are needed to repair the product is 7 years after the termination of the product.

**Reproduction Prohibitions** Please note that reproduction of the following is prohibited by law: Domestic and foreign currencies, government-issued securities, and national bonds and local bond certificates. Unused postage stamps, post cards, etc. Certificate stamps stipulated by law. Reproducing works forming the subject matter of copyright (literary works, musical works, paintings, engravings, maps, cinematographic works, drawings, photographic works, etc.) is not permitted unless the reproduction is for the purpose of personal use, family use or other similar uses within a limited circle.

For more information or detailed product specification, please call or visit us at

**Fuji Xerox Australia Pty. Ltd.**

101 Waterloo Road, Macquarie Park, NSW Australia. 2113

Tel. +61 2 9856 5000

<http://www.fujixerox.com.au/>

## Finisher D4\*1 (Optional)

| Item                      | Finisher D4   | Finisher D4 with Booklet Maker  |
|---------------------------|---|---|
| Type                      | Output Tray   | Sort / Stack  |
|                           | Finisher Tray   | Sort (Offset available) / Stack (Offset available)  |
|                           | Booklet Tray  | - / Sort / Stack  |
| Paper Size                | Output Tray   | Standard size: Max. A3, Min. A6 Custom size: 100 × 148 mm to 330 × 488 mm   |
|                           | Finisher Tray   | Standard size: Max. A3, Min. B5 Custom size: 203 × 182 mm to 330 × 488 mm   |
|                           | Booklet Tray  | - Standard size: Max. A3, Min. A4 Custom size: 210 × 279 mm to 330 × 457 mm   |
| Paper Weight              | Output Tray   | 64 to 300 gsm   |
|                           | Finisher Tray   | 64 to 300 gsm   |
|                           | Booklet Tray  | - 64 to 300 gsm   |
| Paper Capacity*2          | Output Tray   | 500 sheets (A4)   |
|                           | Finisher Tray   | [Without stapling]<br>A4: 3000 sheets<br>B4 or larger: 1500 sheets<br>Mixed size stack*3: 350 sheets<br>[With stapling]<br>A4: 200 sets or 3000 sheets<br>B4 or larger: 100 sets or 1500 sheets   |
|                           | Booklet Tray  | - [Without stapling]<br>A4: 2000 sheets<br>B4 or larger: 1500 sheets<br>Mixed size stack*3: 350 sheets<br>[With stapling]<br>A4: 200 sets or 2000 sheets<br>B4 or larger: 100 sets or 1500 sheets |
| Staple                    | Staple Capacity   | 100 sheets*5  |
|                           | Paper Size  | Max. A3, Min. B5  |
|                           | Staple Position   | Single stapling, Dual stapling  |
| Punch                     | Number of punch holes   | 2 / 4 or 2 / 3 (Optional functions)   |
|                           | Paper Size  | Max. A3, Min. B5  |
|                           | Paper Weight  | 64 to 200 gsm   |
| Booklet Finishing         | Capacity  | - Saddle staple: 20 sheets*6<br>Single fold: 5 sheets   |
|                           | Paper Size  | - Max. A3, Min. A4  |
|                           | Paper Weight*7  | - Saddle staple: 64 to 220 gsm<br>Middle fold: 64 to 220 gsm<br>Single fold: 64 to 300 gsm  |
| Interposer                | Paper Size  | Max. A3, Min. B5  |
|                           | Paper Weight  | 64 to 220 gsm   |
|                           | Paper Capacity  | 200 sheets  |
| Power Supply              | AC 100-240 V, 2 A, 50/60 Hz common  |   |
| Maximum Power Consumption | 203 W or less   |   |
| Dimensions                | W 1050 × D 727 × H 1165 mm<br>W 1250 × D 727 × H 1165 mm<br>(With Folder Unit D4) | W 1055 × D 727 × H 1165 mm<br>W 1255 × D 727 × H 1165 mm<br>(With Folder Unit D4)   |
|                           | Weight  | 115 kg, 155 kg (With Folder Unit D4) 150 kg, 190 kg (With Folder Unit D4)   |

\*1: Finisher D4 requires Interface Module. \*2: 80 gsm Paper \*3: When larger size sheets are stacked on top of smaller size sheets. \*4: For 15 sheets/set booklet. When over 15 sheets/set, the booklet tray capacity is 15 sets. Paper may not be accepted depending on paper type and other usage conditions. \*5: 65 sheets for sizes exceeding A4. \*6: A customer engineer can change the maximum number of booklet sheets, within the limits (up to 25 sheets). \*7: For a Booklet/Bi-Fold job, 64-300 gsm paper can be used as a cover sheet. When cover is applied, the staple capacity can decrease depending on type and weight of paper being used and other conditions.

## GBC® AdvancedPunch™\*1 (Optional)

| Item                      | Description   |
|---------------------------|---|
| Paper Size                | A4 (long edge feed)   |
| Paper Weight              | 75 to 216 gsm*2   |
| Punch Type*3              | 21-Hole Punch Comb Bind, 20-Hole Punch Comb Bind<br>34-Hole Twin Loop Binding (Round), 23-Hole Twin Loop Binding (Round)<br>34-Hole Twin Loop Binding (Square), 23-Hole Twin Loop Binding (Square)<br>4-Hole Punch 4 Ring, 2-Hole Punch 2 Ring<br>12-Hole VeloBind®, 47-Hole Colour Coil™ Bind, 34-Hole ProClick® |
| Power Supply              | AC 230 V, 1.2 A, 50 Hz  |
| Maximum Power Consumption | 276 W or less   |
| Dimensions                | W 305 × D 978 × H 724 mm  |
| Weight                    | 70 kg   |

\*1: GBC® AdvancedPunch™ requires Finisher D4 with or without Booklet Maker and also Interface Module. \*2: Uncoated paper (75 to 216 gsm) or coated paper (106 to 216 gsm) can be used as a cover sheet. \*3: Customer replaceable die sets.



### For Your Safety

Before using the product, read the Instruction Manual carefully for proper use. Use the product with the power source and voltage specified. Be sure to establish ground connection. Otherwise, electronic shock may result in the case of a failure or short circuit.

