

WESTERN CERAMIC COLORS

Manufactured by **CLAY PLANET**

1775 Russell Avenue Santa Clara, CA 95054
Phone 408-295-3352 Fax 408-295-8747

Western Glazes have been produced exclusively in California for over 50 years. Every batch is tested for quality before bottling. Our high quality glazes, underglaze, engobes, and oxide washes, are in use worldwide as a standard for ceramic excellence.

Guide Rev. Jan 2019



WESTERN CERAMIC GLAZES

COLOR GUIDE

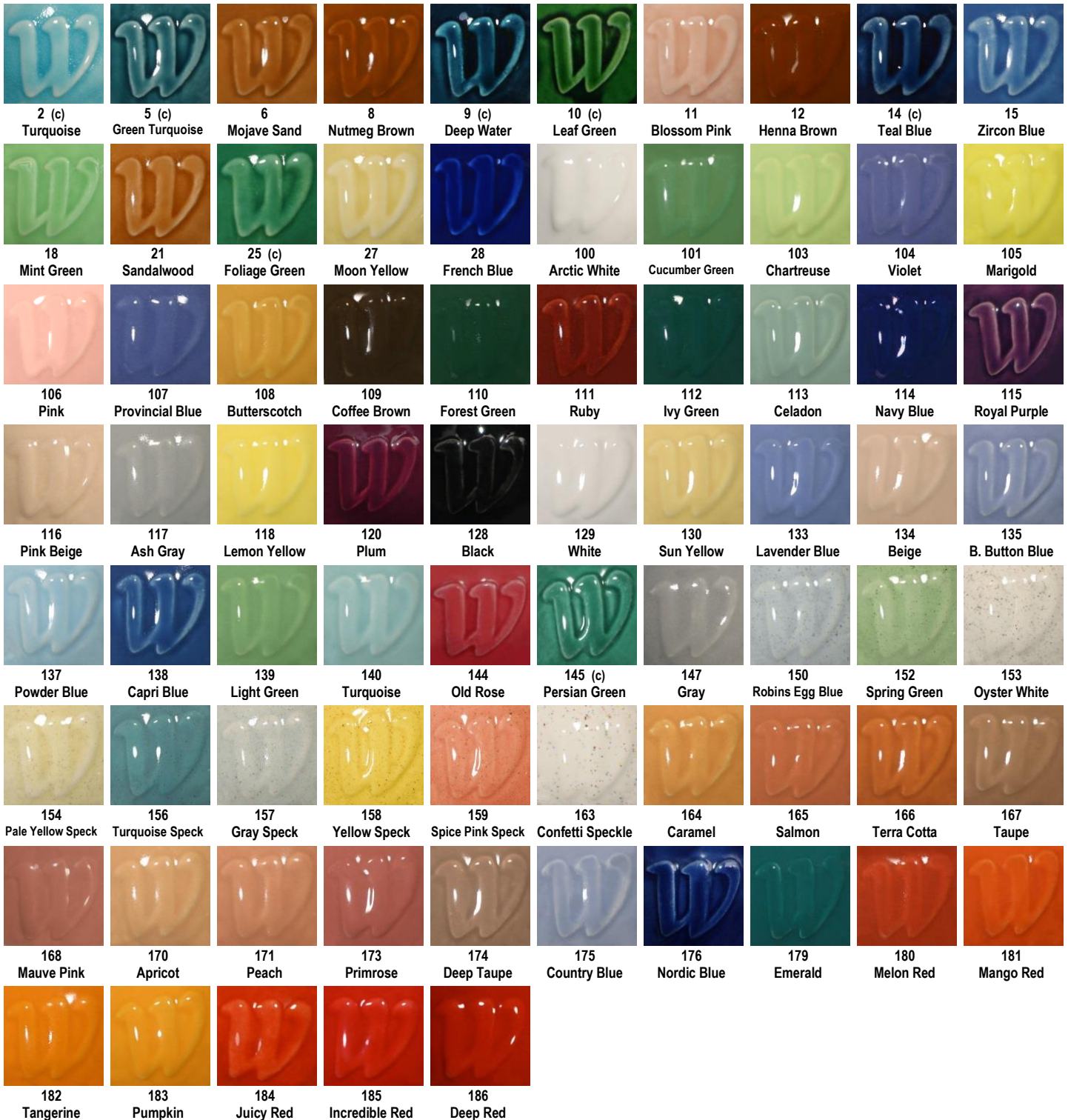
Western Glazes are available through any of our proud distributors.

Visit www.WesternGlaze.com

For use details, pricing, Safety Data Sheets (SDS), and product information.

Unless otherwise noted (*) (c) Western Ceramic Glaze, Engobe and Underglaze is certified Non-Toxic, Lead-Free, Food Safe, and safe for use in K-12 classrooms. See Labeling Guide on last page for details.

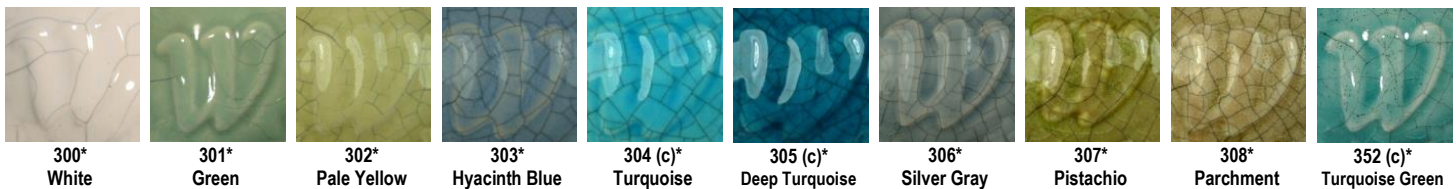
Low Fire Gloss Glazes – Cone 05 (Lead-Free – Non Toxic – For colors marked with a (*) or (c) refer to glaze label guide)



Low Fire Satin-Matt Glazes – Cone 05 (Lead-Free – Non Toxic – For colors marked with a (*) or (c) refer to glaze label guide)



Low Fire Gloss Crackle Specialty Glazes – Cone 05 (Lead-Free – Safe for K-12 – Crackle not recommended for food or drink)



Low Fire Specialty Art Glazes – Cone 05 (Lead-Free – Non-Toxic - Safe for K-12 use)



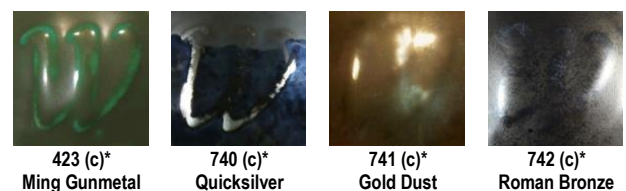
Low Fire Transparent Clear Glazes – Cone 05

(Lead-Free – Non Toxic - Safe for K-12 use)

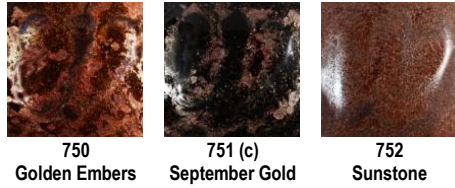


Low Fire Specialty Metallic Glazes – Cone 04

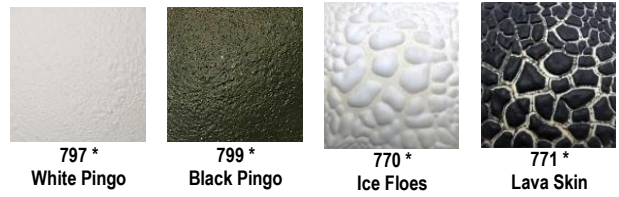
(Lead-Free – Safe for K-12 use)



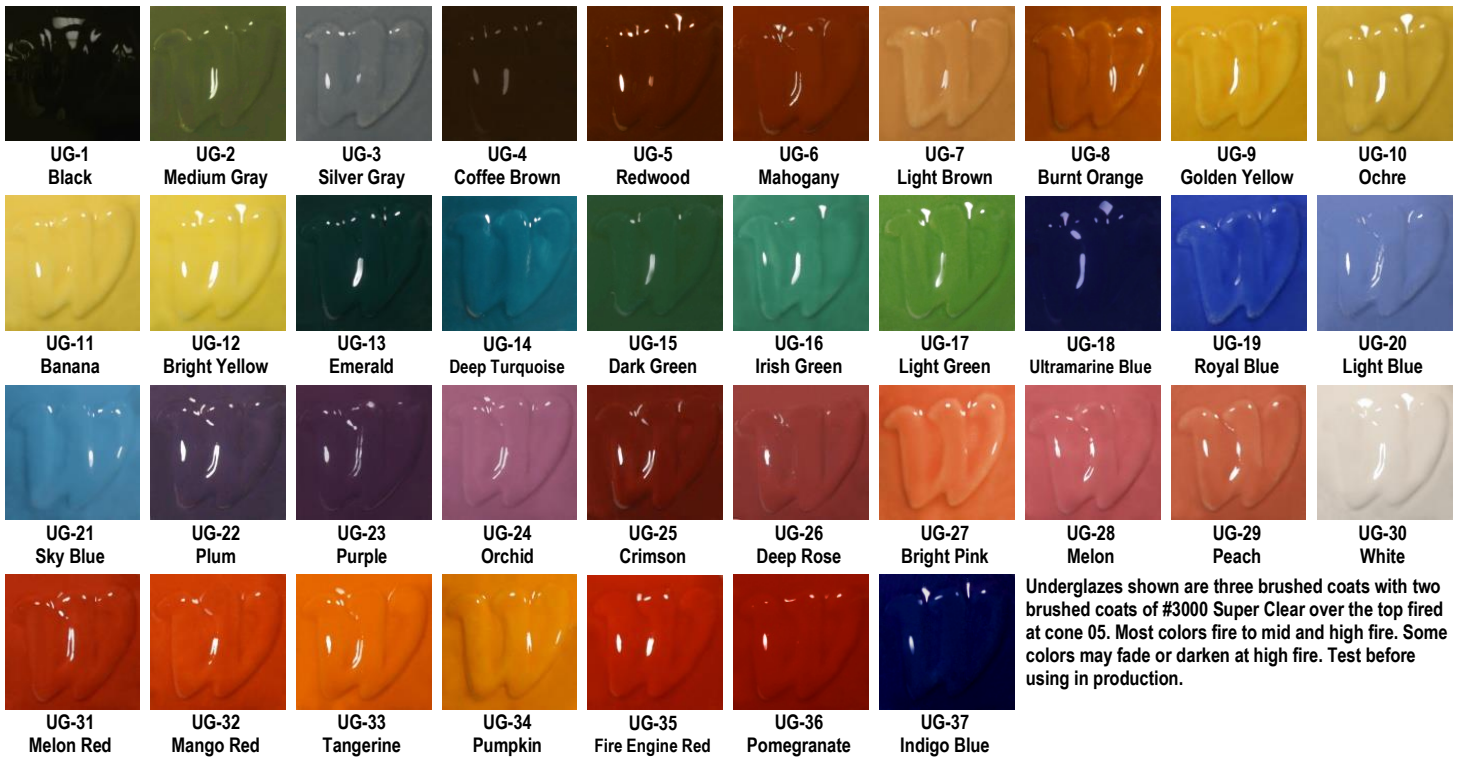
Low Fire Specialty Aventurine Glazes – Cone 05
(Lead-Free – Non-Toxic - Safe for K-12 use)



Low Fire Specialty Lava & Crawl Glazes – Cone 05
(Lead-Free – Non-Toxic - Safe for K-12 use)



Underglaze – Semi Opaque – Cone 06-10 (Lead-Free – Non-Toxic - Safe for K-12 use)



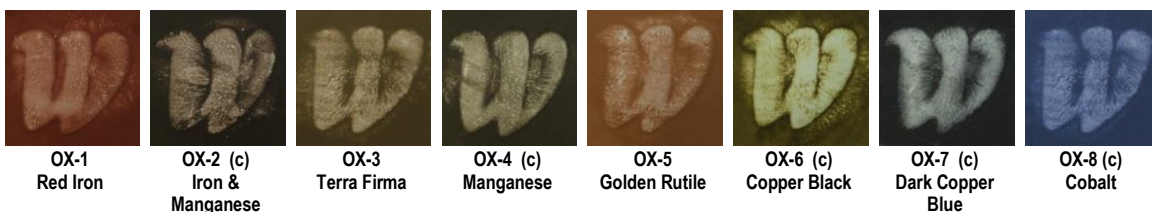
High Fire Stoneware Glazes – Cone 10 Lead-Free, Non Toxic, Food Safe – Tiles fired in Reduction unless specified with (ox)



Mid Fire Stoneware Glazes – Cone 5/6 (Lead-Free – Non Toxic – For colors marked with a (*) or (c) refer to glaze label guide)

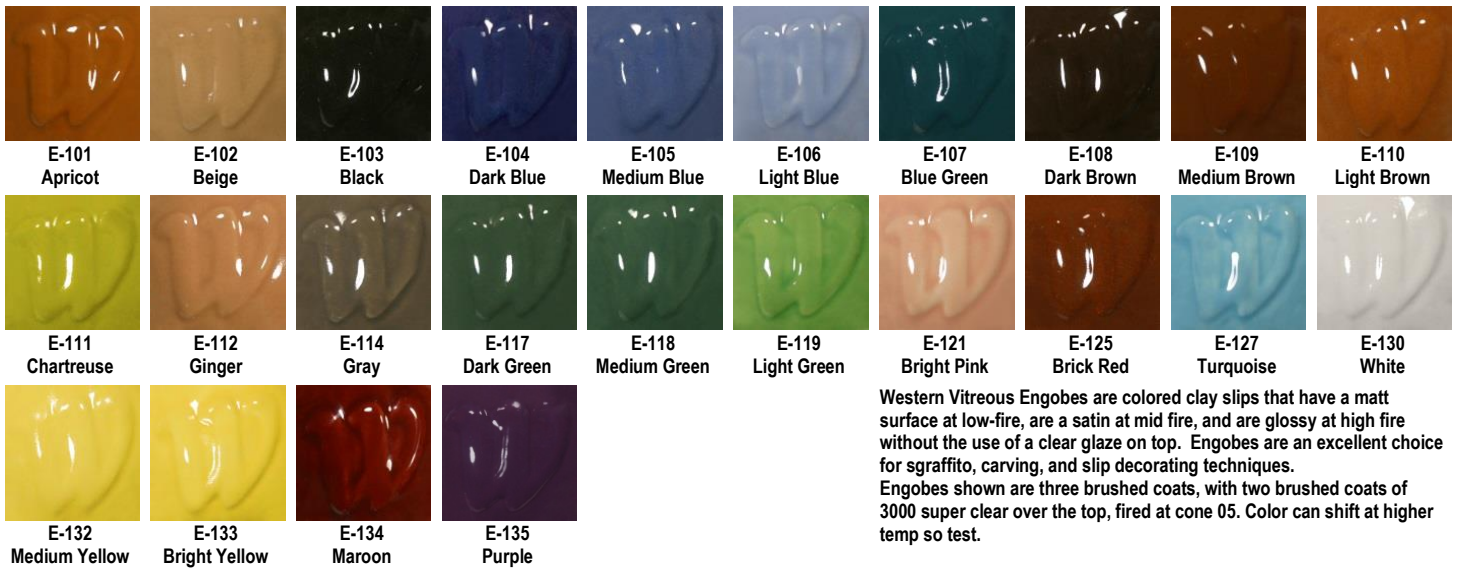


Oxide Wash - Cone 06-10 (Lead-Free – Non Toxic – For colors marked with a (*) or (c) refer to glaze label guide)



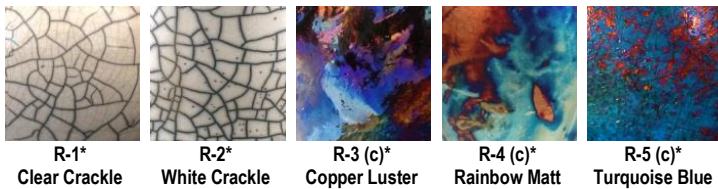
Oxide Washes can be used under or over glazes, or by themselves. They are stable and do not rub off when fired cone 06 or higher. Washes can be absorbed by glaze.

Engobe – Semi Opaque Vitreous Colored Slip – Cone 06-6 (Lead-Free - Non-Toxic - Safe for K-12 use)



Western Vitreous Engobes are colored clay slips that have a matt surface at low-fire, are a satin at mid fire, and are glossy at high fire without the use of a clear glaze on top. Engobes are an excellent choice for sgraffito, carving, and slip decorating techniques. Engobes shown are three brushed coats, with two brushed coats of 3000 super clear over the top, fired at cone 05. Color can shift at higher temp so test.

Raku Low Fire Specialty Glazes – Cone 06 (Lead-Free - Not for food or drink)



Western Raku Glazes require a post fire reduction to achieve the special effects shown here. Only use for raku firing. Due to uncontrollable variations in firing, colors of R-3, R-4, R-5 will vary greatly. R-1 can be tinted into other shades of color with the addition of stains or oxides.

Leaded Frit Low Fire Art & Metallic Glazes – Cone 06-04 – TOXIC – Keep out of reach of children



- Do not use with food & drink containers.
- Not allowed for use in schools (K through 12) or in health care facilities. For professional use only.
- Contains leaded frit and does not pass test for lead release or other soluble oxides.
- Glazes 910-960 also contain cadmium compounds.
- WARNING - Conforms to ASTM D-4236 Cautionary Labeling.



SPECIAL ORDERS

- All non-stock gallons of liquid glaze are available by special order with a 2 gallon minimum.
- 5 gallon pails of any color are available by special order.
- Please specify brushing or dipping form when special ordering liquid glazes.
- Lead time for lead free glazes: 2-3 weeks.
- Lead time for leaded glazes: 6-8 weeks.

DRY GLAZE COLORS

- Most lead free western colors are available as dry, unground glaze by special order.
- There is a 25 lb. minimum for dry glazes.
- Please specify brushing or dipping form.
- To mix dry glazes, most glazes require approx. 10-11 fluid ounces of water per dry pound (16 oz) of glaze. Add dry powder to measured water, sieve, test and adjust water as necessary and remix before glazing.
- *Leaded glazes not available in dry form.*

CUSTOM COLOR MIXING/MATCHING

- Custom mixing services using your recipe, in dry or wet form, are available.
- Color matching and custom glaze formulation services are also available.
- Call for further details.

GLAZE LABELING GUIDE



LEAD FREE



**WESTERN GLAZES ARE LABELED AS:
NON-TOXIC OR CAUTION**

ONLY **NON-TOXIC** LEAD-FREE GLAZES ARE CERTIFIED FOR USE IN PUBLIC SCHOOLS. REFER TO INDIVIDUAL PRODUCT LABELS FOR PROPER HANDLING AND APPLICATION.

Unless otherwise noted (SEE * **(c)** BELOW) all Western Ceramic Glaze, Engobe and Underglaze is certified Non-Toxic, Lead-Free, Food-Safe, and safe for use in K-12 classrooms.

***** Marked glazes are Lead-Free, and Non-Toxic, but due to soft or crackle surface; these glazes are not recommended for use inside food & drink containers.

(c) Marked glazes are Lead-Free, Non-Toxic, and Food-Safe when fired to proper maturing temperature, but contain copper or other soluble metal oxide and are only recommended for grades 7-12, not for K-6

Raku, Crackle, Lava, and Crawl Glazes are Lead-Free, but because they are crackle, have rough surfaces that may not completely cover, or contain excessive copper, they are not recommended for food and drink containers.

LEADED GLAZES (RED LABEL) ARE NOT SAFE FOR USE BY CHILDREN AND ARE NOT ALLOWED IN CLASSROOMS

DISTRIBUTED BY: