

# Colorado Historical Society Staff

The Staff of the Colorado Historical Society is a group of 126 people who dedicate their professional lives to making the great stories of Colorado's past come to life for people throughout the state, across the country, and around the world. Representing specialties as diverse as curatorial practices, marketing, facilities management, education, design, and of course, history, the Society's staff all have one thing in common: a desire to live the mission by enriching lives through collecting, preserving, and interpreting the history of Colorado and the West.

## ADMINISTRATION

Georgianna Contiguglia, *President and State Historic Preservation Officer*  
Jennifer Adams, *Program Assistant*  
Alice Rodriguez, *Human Resources Officer*

## ADMINISTRATIVE SERVICES

### Financial Affairs

Tom Zimmer, *Chief Financial Officer*  
Eric Elfton, *Accounting Technician III*  
Lillie Fuller, *Accounting Technician II*  
Mary Velasquez, *Accounting Technician II*

### Information Technology

Barry Okita, *Director*  
Tenzin Gyaltzen, *WAN Administrator/User Support*  
Irene Morita, *User Support/WAN Administrator*

## ARCHAEOLOGY AND HISTORIC PRESERVATION

Susan Collins, *State Archaeologist and Deputy State Historic Preservation Officer for Archaeology*  
Mark Wolfe, *Deputy State Historic Preservation Officer for History and Director, State Historical Fund*  
Susan Barron, *Administrative Assistant*  
Sarah Chandler, *Administrative Assistant*

### Information Management

Meg Van Ness, *Director*  
Carol Beam, *Historic Preservation Specialist*  
Chris Bevilacqua, *Archaeological Information Specialist*  
Chris Geddes, *Historical Information Specialist*  
Tracy Hall, *Cultural Resource Data Processor*  
Kathryn Kehl, *GIS/Imaging Specialist*  
Amy Klingenberg, *Archaeological Information Specialist*  
Lovella Learned Kennedy, *Archaeological Information Specialist*  
Emily Salazar, *GIS Specialist*  
Mary Sullivan, *Database Administrator*  
Josh Torres, *GIS Specialist*

### Intergovernmental Services

Kaaren Hardy, *Director*  
Dan Corson, *Government Liaison*  
W. James Green, Jr., *Compliance Coordinator*  
Joseph Saldibar, *Architectural Services Coordinator*

### Office of State Archaeologist

Kevin Black, *Assistant State Archaeologist*  
Thomas Carr, *Staff Archaeologist*  
Todd McMahon, *Archaeological Survey Mapper, Librarian*

### Preservation Planning

Dale Heckendorn, *National & State Register Coordinator*  
Suzanne Doggett, *National & State Register Historian*  
Holly Wilson, *National & State Register Historian*

### State Historical Fund

Estella Cole, *Historic Preservation Specialist*  
David Deyloff, *Administrative Assistant*  
Ghedda Gayou, *Historic Preservation Specialist*  
Jonathan Held, *Historic Preservation Specialist*  
Jim Joy, *Historic Preservation Specialist*  
Michael Lucki, *Program Assistant*  
Alyson McGee, *Public Outreach Coordinator*  
Lyle Miller, *Technical Advisor*  
Gloria Muniz, *Contracts Officer*  
Cyril Padilla, *Grants Assistant*  
Nan Rickey, *Historic Preservation Specialist*  
John Semple, *Administrative Assistant*  
Rachel Simpson, *Technical Advisor*  
James Stratis, *Preservation Projects Manager*  
Pat Wilson, *Grants Assistant*

## COLLECTIONS AND EXHIBITIONS

Anne Wainstein Bond, *Director*

### Books and Manuscripts

Bridget Burke, *Curator*  
Margi Aguiar, *Serials Collection Coordinator*  
Patrick Fraker, *Associate Curator, Books and Serials*  
Keith Schrum, *Associate Curator, Manuscripts*

### Decorative and Fine Arts

Moya Hansen, *Curator*  
Alisa Zahller, *Associate Curator*

### Design and Production

David Newell, *Director*  
Mark Wanker, *Carpenter*  
Dirk Westervelt, *Museum/Exhibit Technician*  
Larry Zeschin, *Preparator*

### Material Culture

Carolyn McArthur, *Curator*  
Bridget Ambler, *NAGPRA Liaison*  
Robin Grotke, *Curatorial Assistant*

### Photography and Films

Eric Paddock, *Curator*  
Judy Steiner, *Associate Curator*

## COLLECTIONS SERVICES AND ACCESS

Rebecca Lintz, *Director of Library Services*  
Jean Settles, *Information Officer*

### ***Collections Management***

Catrina Elia, *Director of Collections Management*  
Todd Topper, *Registrar*

### ***Stephen H. Hart Library***

Barbara Dey, *Reference Librarian*  
Jay DiLorenzo, *Staff Photographer*  
Jennifer Hunter, *Collections Assistant*  
Karyl Klein, *Administrative Assistant*  
Debra Neiswonger, *Library Technician*  
Michael (Spydr) Wren, *Assistant Staff Photographer*

## FACILITIES SERVICES

Joseph Bell, *Director*  
Michael Carrara, *Assistant Director*  
Michael Kallenberg, *Intern*  
Pat Karas, *Office Manager*  
Michael Stoetzel, *Project Manager*

### ***Security and Admissions***

Steve Golden, *Director of Security*  
Vernell Crump, *Security Guard*  
Debbie Guerrero, *Security Guard*  
Greg Vigil, *Security Guard*

## INTERPRETIVE SERVICES

Martha Dyckes, *Director*

### ***Education***

Bobbe Hultin, *Tour Director*  
Robyn Jacobs, *Public Programs Coordinator*  
Marilyn Lindenbaum, *School/Youth Programs Coordinator*  
Mary Ann McNair, *Coordinator of Educational Materials*

### ***Research and Publications***

Modupe Labode, *Chief Historian/Director, Research*  
David Wetzel, *Director, Publications*  
Larry Borowsky, *Editor, Colorado History Journal*  
Ben Fogelberg, *Editor, Colorado History NOW*  
Steve Grinstead, *Editor, Colorado Heritage Magazine*  
Susan Romansky, *Graphics Assistant*  
Gerry Ronning, *Assistant Coordinator, Roadside Interpretation Program*  
Brian Shaw, *Manager, Roadside Interpretation Program*  
Andy Stine, *Assistant Coordinator, Roadside Interpretation Program*

## OUTREACH AND DEVELOPMENT

Carol C. Whitley, *Director*

### ***Development and Membership***

Nancy Freimuth, *Development Officer*  
Karen Mandel, *Database Manager*  
Melissa River, *Membership Director*

### ***Marketing***

Kelly Williams, *Marketing Director*  
Valerie Hamlin, *Public Relations Director*  
Jackie Lee Stone, *Museum Rentals Manager/Marketing Assistant*

### ***Museum Stores***

Vivian Coates, *Director*  
Deborah Golden, *Assistant Director, Colorado History Museum*  
Chris Piper, *Shipping and Receiving Manager*

### ***Volunteers***

Angela Caudill, *Volunteer Manager/Development Associate*

## REGIONAL MUSEUMS

### ***Byers Evans House, Grant-Humphreys Mansion, Pearce-McAllister Cottage***

Kevin Gramer, *Director*  
Kristie Butler, *Museum Guide BEH*  
Dan Hupp, *Maintenance Mechanic BEH, GHM, PMC*  
Connie Martindale, *Facility Events Coordinator GHM*  
Victoria (Vicki) Morton, *Museum Guide BEH*

### ***El Pueblo Museum***

Deborah Espinosa, *Director*  
Kathleen Eriksen, *Education Coordinator*  
Helen Reyes, *Administrative Assistant*

### ***Fort Garland/Pike's Stockade***

Rick Manzanares, *Director*  
Edward Gallegos, *Structural Trades*

### ***Fort Vasquez***

Susan Hoskinson, *Director*

### ***Georgetown Loop Historic Mining and Railroad Park***

Lee Behrens, *Director*

### ***Healy House and Dexter Cabin***

Victor L. Frank, *Director*

### ***Trinidad History Museum***

Paula Manini, *Director*  
Manuel Gamboa, *Structural Trades*

### ***Ute Indian Museum***

CJ Brafford, *Administrator*

# Staff Professional Activities

## Staff Accomplishments

### Abbreviations

- AAM—American Association of Museums  
AASLH—American Association for State and Local History  
ACHP—Advisory Council on Historic Preservation  
AIA—American Institute of Architects  
CAS—Colorado Archaeological Society  
CCPA—Colorado Council of Professional Archaeologists  
CLA—Colorado Library Association  
CML—Colorado Municipal League  
CPI—Colorado Preservation, Inc.  
CSA—Costume Society of America  
CWAM—Colorado-Wyoming Association of Museums  
NAPC—National Alliance of Historic Preservation Commissions  
NEH—National Endowment for the Humanities  
NTHP—National Trust for Historic Preservation  
PAAC—Program for Avocational Archaeological Certification  
SRMA—Society of Rocky Mountain Archivists

### Bridget Ambler

- Delivered paper, "Shop 'Til You Drop; Folsom Lithic Procurement Strategies at the Lindenmeier Site, Colorado," *Society for American Archaeology*
- Advisory board member, Fort Collins Museum
- Board member, CCPA
- Presented before the NAGPRA Review Committee, Tulsa, Oklahoma

### Lee Behrens

- Board of Trustees, Western Museum of Mining and Industry
- Chair, Historic District Public Lands Commission
- Chair, Silver Heritage Area Partnership
- Vice-Chair, Clear Creek Fire Authority
- Director, Historic Georgetown, Inc.

### Chris Bevilacqua

- Poster presentation: "Ceramic Resource and Community Organization, Southwest Colorado, A.D. 1225–1300," *Society for American Archaeology*

### Kevin Black

- Delivered several conference papers on the PAAC Summer Training Survey at Tomahawk State Wildlife Area in South Park: "The Real South Park: Late Holocene Sites in Central Colorado," *Rocky Mountain Anthropological Conference*; "The 2000–2001 PAAC Summer Training Survey in South Park, Colorado," CAS and CCPA; and "Late Holocene Archaeology in South Park, Colorado: An Avocational Training Survey," *Society for American Archaeology*
- Invited chair, general session, "From Lithics to Landscapes: Current Studies in Plains and Rocky Mountain Archaeology," *Society for American Archaeology*
- Editor, *Southwestern Lore*, CAS quarterly journal

### Anne Wainstein Bond

- Graduate faculty, Department of History, Colorado State University
- Conference moderator, Fort Robinson History Conference, Nebraska State Historical Society
- Vice-chair, national board, Presbyterian Historical Society
- Grant review panelist, NEH

### CJ Brafford

- Chair, American Indian Museum Program, AASLH
- Board member, Colorado's Endangered Places Program
- Co-chair, Montrose Visitors and Convention Bureau

### Bridget Burke

- Panel moderator, SRMA
- Member, Digital Audio Task force, Colorado Digitization Project

### Thomas Carr

- Juror, History Day Competition, Denver Public Schools
- Delivered two papers: "The State Historical Fund and Southwest Colorado Projects," *San Juan Mountain Association Site Steward Conference*, and "The State Historical Fund and Colorado Archaeology," CCPA
- Wrote technical report, "Archaeological Monitoring and Archival Research at the First United Presbyterian Church Site (5DV8166)," Denver, Colorado
- Co-authored (with Susan Collins), "Report of the State Archaeologist to the Colorado Commission of Indian Affairs"
- Tour Scholarship for graduate research, University of Colorado–Boulder

### Angela Caudill

- Board member and membership chair, Directors of Volunteers in Agencies
- Volunteer management chair, 2002 International Conference on Volunteer Administration

### Susan Collins

- Session organizer, "New Archaeological Research and Crisis in Curation," *Saving Places 2002 Conference*, Colorado Preservation, Inc.
- President, National Association of State Archaeologists

### Georgianna Contiguglia

- Advisory Committee, Colorado State Capitol Building
- Advisory Committee, Colorado Executive Residence
- Scenic and Historic Byways Commission
- Peer reviewer, Museum Accreditation Program, AAM
- Grants review panel, NEH
- Juror and featured speaker, Northern Colorado Arts Association annual exhibition

### Dan Corson

- Chair, CML Growth Committee meetings
- Presenter, "Ordinance Trends in Colorado," *American Planning Association Conference*
- Participant, NAPC board meeting and conference
- Moderated NAPC Mock Commissions Meeting at NTHP conference
- Instructor, Main Street managers' training workshop
- Participant, Colorado Main Street program selection process
- Presented at CML conference
- Moderator of three sessions, CPI annual conference
- Presented on historic preservation to CML Policy Committee
- Served on CPI's honor awards selection committee

### David Deyloff

- Lead coordinator for the Colorado Combined Campaign

### Martha Dyckes

- Nominating Committee, AASLH
- Program Committee, AASLH annual meeting and conference
- Chair, Grant Review Committee, Philadelphia Heritage Investment Program, Pew Charitable Trust
- Board member, EdCom, AAM

### **Kathleen Erickson**

- Consultant, Centennial High School museum exhibits

### **Deborah Espinosa**

- Board of Directors, Latino Chamber of Commerce, Pueblo
- Member, President's Advisory Committee, University of Southern Colorado
- Awarded M.A. degree in nonprofit management, Regis University

### **Larry Frank**

- Treasurer, Board of Directors, Leadville Chamber of Commerce
- Member, Lake County Historic Preservation Advisory Board

### **Gheda Gayou**

- Member, Historic Preservation Committee, AIA
- Member, Dearfield Preservation Committee

### **Kevin Gramer**

- Presented classes in historic preservation for gifted and talented students at Slavens School

### **W. James Green, Jr.**

- Participant, U.S. Forest Service Regional Cultural Resources Management Forum
- Participant, Society for American Archaeology annual meeting

### **Steven Grinstead**

- Wrote Colorado State Historical Fund annual report
- Author, *Trinidad History Museum: A Capsule History and Guide*

### **Robin Grotke**

- Curator, *Shadows, Gloves, and Strings: A Multicultural View of Puppetry*, Museum of Miniatures, Dolls, and Toys, Denver
- Awarded M.A. degree in anthropology, University of Denver

### **Moya Hansen**

- Board of Directors, Rocky Mountain Quilt Museum
- Awarded Ward Family Prize for History, University of Colorado–Denver
- Author, "Pebbles on the Shore: Economic Opportunity in Denver's Five Points Neighborhood, 1920–1950," *Colorado History* (Colorado Historical Society)

### **Kaaren Hardy**

- Participant, Rocky Mountain Association of Environmental Professionals annual Envirofest
- Participant, U.S. Forest Service Regional Cultural Resources Management Forum
- Presented on Section 106 to Rocky Mountain College of Art and Design students
- Presenter, Ute Animas–La Plata meeting
- Presenter, ACHP Section 106 training workshop
- Management/Moffat County Commissioners Section 106 training

### **Susan Hoskinson**

- Advisory Committee, American West Program, Colorado State University
- Advisor, French Icarian Colony Foundation Board

### **Karyl Klein**

- Attended two Colorado Digitization Project workshops

### **Modupe Labode**

- Chair and panel commentator, "Feminism and Colonial and Post-Colonial Nationalism in Africa," Berkshire Conference on the History of Women

### **Rebecca Lintz**

- Special libraries representative, Central Colorado Library System Board
- Special libraries representative, Collaborative Digitization Program Board
- Secretary, Colorado Preservation Alliance Board
- Archivist, SRMA board

### **Paula Manini**

- Member, Heritage Committee, Highway of Legends Scenic and Historic Byway
- Membership chair, Colorado-Wyoming Association of Museums

### **Carolyn McArthur**

- Presenter, "Hide Shirts and Leather Jackets: Stylistic Fusion in Southern Colorado, 1830–1870," Society for American Archaeology
- Presenter and trainer, CHS-NAGPRA Workshop for Tribes and Sand Creek Massacre Descendants, National Park Service

### **Todd McMahon**

- Treasurer, CCPA
- Presented paper, "A Field Report on the Reevaluation of Formative Sites in Montrose County Colorado," CCPA

### **Mary Ann McNair**

- Author, "Me and Mr. Finch Go Among 'Em": Damon Runyon's Early Years in Colorado," *Colorado Heritage* (Colorado Historical Society)
- Photo editor, *I Looked in the Brook and Saw a Face* (Westcliffe Publishers, 2002)

### **Lyle Miller**

- Board of directors, Lakewood Historical Society
- Co-produced slide lecture, "Crusin' for History" and bus tour for CPI conference
- Conducted Manitou Motor Court Memorabilia Tour, Colorado Historical Society
- Presented "Motoring Firsts in Colorado," CHS Sandwiching in History series

### **Vicki Morton**

- Board of directors, Golden Triangle Arts District

### **David Newell**

- National Board of Directors, CSA
- Editorial committee, CSA Series, CSA
- Co-author and committee member, Richard Martin Award for Excellence in Costume Exhibition, CSA
- Secretary, CSA Region VII, Southwest

### **Eric Paddock**

- Research grant to study and photograph cultural landscapes of the ski industry, Colorado Endowment for the Humanities
- Lecturer, Jackson/Fielder rephotography project, Colorado Springs Pioneer Museum

### **Helen Reyes**

- Board of Directors, Frontier Pathways Scenic and Historic Byway

### **Melissa River**

- Colorado Trust Fellow
- Publicity Committee, National Philanthropy Day
- Member Retention Committee, Downtown Denver Partnership
- Development Committee, Family Pathways of Colorado

### **Susan Romansky**

- Brochure design, *High Stakes Preservation* exhibit
- Exterior signs and event posters, Trinidad History Museum

### Joseph Saldibar

- Presenter, CPI annual conference
- Presenter, state tax credit workshop

### Keith Schrum

- Presented workshop, "Archives 101," Central Colorado Library District
- Consultant on CF&I archives, Bessemer Historical Society, Pueblo

### James Stratis

- Organized and facilitated Historic Structures Assessment Forum
- Lectured on historic school building preservation, CPI conference, and "If These Walls Could Talk," Cortez, Colorado
- Lectured on historic architectural character of Washington Park, community meeting "Why Survey?" sponsored by WWP Neighborhood and Denver City Council
- Member, Colorado State Capital Building Stakeholder and AIA Historic Preservation Committees
- Manuscript peer reviewer, Association for Preservation Technology International Bulletin

### Meg Van Ness

- City of Golden Planning Commission and Open Space Advisory Board
- Board of the Rocky Flats Cold War Museum
- Sixteen presentations/workshops to various professional, educational, and service organizations

### David N. Wetzel

- Author, *I Looked in the Brook and Saw a Face* (Westcliffe Publishers, 2002)

### Carol C. Whitley

- Board member, Development and Membership Standing Professional Committee, and Chair, Scholarship Committee, AAM

### Mark Wolfe

- Board member and conference and events committee chair, Society for Commercial Archeology
- Application reviewer, NTHP annual meeting scholarship program
- Member, Historic Dearfield steering committee for the Black American West Museum

- Member, Colorado Heritage Area Partnership steering committee
- Presenter and tour guide, CPI conference

### Alisa Zahller

- Exhibition curator, *QuiltSpeak: Stories in the Stitches*, Colorado History Museum
- Staff liaison, African American Advisory Council, CHS

### Larry Zeschin

- Attended CWAM annual meeting
- Attended workshop on faux finishes



*Learning to grind corn at a Family Free Day at the Colorado History Museum.*

# Board of Directors

## Colorado Historical Society Board of Directors, 2001–2002

The Society's Board of Directors is comprised of community leaders from throughout Colorado who support the Society's mission by lending stewardship and guidance to the organization.

### Officers & Executive Committee

W. Nicholas V. Mathers,  
*Chairman*  
Joseph W. Halpern,  
*Vice Chairman*  
Philip H. Karsh,  
*Vice Chairman*  
Dana H. Crawford, *Secretary*  
Mary Lyn Ballantine, *Treasurer*  
Ellen K. Fisher, Ph.D.  
Jon N. Schler  
Dottie Wham

### Directors

Ronald G. Askew  
Alice Bamford  
W. Bart Berger  
Virginia K. Berkeley  
Tom Blickensderfer  
Curtis E. Burton  
Martha Wright Cannon  
Stanley Dempsey  
Susan Drumm  
Gael M. Fetcher  
E.A. Garcia, M.D.  
Paul Kabotie  
Frank A. Kugeler  
Richard A. Marlar, Ph.D.  
Jim McCotter  
Mae McGregor  
Douglas N. Morton  
Robert J. Mutaw, Ph.D.  
Thomas J. Noel, Ph.D.  
Honorable Robert W. Ogburn  
James H. Ranniger  
Bruce M. Rockwell  
Jennie Rucker, Ed.D.  
M. Edmund Vallejo, Ph.D.  
Eleanor V. Vincent  
Carol deB. Whitaker  
Grant Wilkins

### Emeritus

Janis H. Falkenberg  
William H. Hornby  
Frank A. Kemp  
Myron D. Neusteter  
Walter A. Steele

### Ex Officio

Timothy E. Foster  
John E. Moye  
Frances Owens

### Directors Council

Ellen Kingman Fisher, Ph.D.,  
*Co-Chair*  
Samuel P. Guyton, *Co-Chair*  
Katherine Beise  
Stuart P. Dodge  
Joan Duncan  
Ed Dwight  
Walter C. Emery  
Janis Falkenberg  
Carol K. Gossard  
Edwin H. Grant, Jr.  
James J. Hester  
James P. Johnson  
Frank A. Kemp  
Roger D. Knight III  
Walter A. Koelbel  
Alma Kurtz  
Dottie Lamm  
Carlos F. Lucero  
Evelyn B. McClearn  
Myron D. Neusteter  
Martha J. Segelke  
Walter A. Steele  
Marcia Tate  
Lee White  
William F. Wilbur

## Colorado Historical Foundation Board of Trustees, 2001–2002

### Officers

John E. Moye, *Chairman*  
Barbara Sudler Hornby,  
*Vice Chair*  
Frank A. Kugeler, *President*  
Joseph W. Halpern,  
*Vice President*  
Carol deB. Whitaker,  
*Vice President*  
Robert H. Back, *Secretary*  
Donald H. Burkhardt,  
*Treasurer*

### Trustees

Dana H. Crawford  
Stanley Dempsey  
Walter C. Emery  
William S. Falkenberg  
Carla Y. Grant  
William H. Hornby  
Susan C. Kirk  
John F. Malo  
Jennifer T. Moulton  
Dwayne C. Nuzum  
Patricia O'Leary  
Susan Powers  
Thomas E. Rodriguez  
Walter S. Rosenberry  
Roz Schneider  
Wilma J. Webb  
Edward D. White, Jr.



The Minnequa Steel Works Office Building and Dispensary in Pueblo was placed on the National Register this year

# Volunteers

A dedicated group of 890 people, the Volunteers make it their personal mission to share their love of Colorado history with others. Contributing to every aspect of the Society, the Volunteers can be seen serving the public at the admissions desks and stores at the Society's museums and historic sites, leading tours and teaching classes through the Education Department, working behind the scenes in the curatorial departments, and researching and cataloguing in the Stephen H. Hart Library. In all, the Volunteers contributed 33,147 hours of their time to the Society in 2001-2002, providing services valued at \$510,134.

In addition to sharing their time and talents at the Society, the Volunteer organization is also actively engaged in raising money in the community to support the Society's programs. This year, the Volunteers inaugurated their "Treasure Your Treasures" event, a silent auction and antique appraisal fair. This event is destined to become an annual favorite, alongside the Volunteers' other fund-raising events: the Fashion Show program, the Speaker's Bureau slide presentations, and the Poinsettia and Geranium Sales. As well as these successful events, the *Across Colorado* cookbook, now in its fourth printing, continues to raise funds. All told, the Volunteers donated \$10,850 to the Society this year to support the programs they value.

The Volunteers of the Colorado Historical Society is a dues-paying organization led by a 28-member Board of Directors. Mae McGregor, President of the Volunteers organization, is also a voting member of the Society's Board of Directors, ensuring that this valuable group contributes to the leadership of the Society at large. Following is a list of members of this vital group that works side-by-side with the staff to bring Colorado's history to life.

## Key:

★Volunteers who contributed over 100 hours of service at the Colorado Historical Society  
† Deceased

## Executive Board

Mrs. Mae McGregor, President★  
Mrs. Gloria Rosener,  
Vice President★  
Mrs. Pat Krupa, Treasurer★  
Mrs. Katherine Miller, Recording Secretary★  
Mrs. Mary Flowers,  
Corresponding Secretary★  
Mrs. Jean Stuck, Past President★

## Committee Chairs

Mrs. Barbara Bushacher  
Mrs. Nancy Buter★  
Mrs. Nancy Dafni★  
Janet Dawson★  
Mrs. Mary M. Fast  
Mrs. Debra Faulkner★  
Mrs. Mary Ellen Greene  
Mrs. Arlene Hansen★  
Ms. Sandi Klatt  
Mrs. Lillian La Fleur  
Ms. Jean Lowe★  
Mrs. Kathleen Marrs★  
Mrs. Shirley Moschetti  
Mrs. Pat Nading-Amman★  
Ms. Randi Randolph★  
Miss Ren Roob★  
Mr. John Russell★  
Mrs. Marie Shaw★  
Mrs. Carol Singer★  
Miss Judith Sullivan★  
Ms. Betty Wallace★  
Ms. Karen Zayaz

## Volunteers

Mrs. Joanne L. Abbott  
Dr. Heraldo Acosta  
Ms. Margot Acosta  
Ms. Judy Adamson  
Ms. Ariana Adreatta  
Mrs. Nona M. Ahearn  
Mr. John K. Aldrich  
Miss Kate A. Alexander  
Ms. Lorraine Alfonso  
Mrs. Anita Allen  
Nicholas Allen  
Ms. Marie Amato  
Mr. Larry H. Amman  
Mr. Phil Anaya  
Mrs. Donna M. Anderson  
Mrs. Judy Anderson  
Mr. Lloyd B. Anderson  
Mr. Glenn Andrade  
Ms. Ariana Adreatta  
Ms. Ashley Adreatta  
Mrs. Dawn J. Apodaca  
Mr. Walter M. Appel, Jr.  
Ms. Mary Ann Aragon

Ms. Monique Archuleta  
Ms. Violet M. Armour  
Mrs. Verna E. Ash  
Mr. Noah Atencio★  
Mr. & Mrs. Bob Atkins  
Ms. Judy P. Atwater  
Mrs. Virginia Auge  
Ms. Eve Aurdy  
Mr. Tom Autabee  
Joey Bacon  
Melvin Bacon  
Mr. Ted Baer  
Mrs. Anne P. Bailey  
Mr. Robert R. Baker  
Mrs. Diane C. Bakke  
Mrs. Claire L. Baldwin  
Mr. & Mrs. Chris Ball  
Mrs. Arleda Ballard  
Dr. Jack S. Ballard★  
Ms. Kristin Barnard  
Mrs. Lila Mae Bartlo  
Mr. William H. Bassett  
Ms. Cathy M. Baumann  
Mrs. Ginny Bayes  
Kyle Beach  
Ms. Shannon Beck  
Mrs. Ellie Beckley  
Ms. Cindy Beckner  
Mrs. Doreen E. Beenck  
Mr. Ray G. Beighle★  
Mr. & Mrs. James W. Beman  
Ms. Nancy J. Bennett  
Mr. Jay Biggs  
Mrs. Sybil W. Binder  
Mrs. Smokie Bischoff  
Ms. Sara Blackman  
Mrs. Iris L. Blancett  
Mr. Walt Blankenship  
Mrs. Barbara Blue  
Ms. Maxine Blunt  
Mr. Tom Blunt  
Mrs. Martha M. Bohlmann  
Ms. Maralyn S. Boland  
Mr. Rooster Bonner  
Mrs. Doris Boorman  
Mr. Don Borie  
Mrs. Marjorie A. Bowen  
Pat Boyer  
Mr. Jim Brackway  
Mrs. Gloria P. Bradfield  
Dr. Charles E. Brady  
Neely Braxton  
Ms. Ruth M. Breashears  
Mr. Donald R. Brian  
Mrs. Catharine S. Brooks  
Ms. Diane V. Brotemarkle  
Mrs. Em Broughton★  
Ms. Jan Brown  
Mrs. Judy Brown  
Mr. Lyn Brown  
Mr. Robert L. Brown  
Mr. Ron Brown  
Ms. Wanda Brown  
Mr. Stuart Bryan  
Ms. Kelly Buckingham

Mrs. Marian B. Bullis  
Ms. Ann Bullock  
Mrs. Rae Bulson  
Leon & Mollie Burlew  
Mrs. Susan H. Burrows  
Mr. Edwin J. Busch  
Mrs. Eleanor Busch  
Ms. Maria Bush  
Mr. Larry Buter  
Ms. Gloria Bylund  
Mr. Joe H. Cacciatore  
Mr. & Ms. Les Cahill  
Mrs. Frances F. Cameron  
Mrs. Karin R. Campana  
Mrs. Nancy A. Campbell  
Mrs. Peggy Campbell  
Mrs. Sarah Campbell  
Ms. Ida Canales  
Mrs. Arna B. Caplan  
Phyllis A. Caporale  
Mr. Dennis Carder  
Mrs. Gini Carey  
Mr. & Mrs. Louie Carleo  
Ms. Maya Carlisle  
Ms. Kathy L. Carroll  
Mrs. Susanne Carson  
Ms. Lynn Castelo  
Mr. Jay M. Caudill  
Mr. Nolan Cella  
Mrs. Ginger Cesario  
Ms. Marjorie B. Chambers  
Mrs. Susan Chambers★  
Ms. Carolyn Chapman  
Mr. Dennis Chappell  
Mr. & Mrs. John Chase  
Ms. Dorothy Chavez  
Ms. Leslie Chomic  
Mrs. Mary Ruth Church  
Miss Jamie Clapper  
Mrs. Edna C. Clark  
Ms. Marilyn Clark  
Mrs. Sherry Clark  
Miss Brooke Cleary  
Mrs. Maryellen B. Clifford  
Dr. Nathan J. Clifford  
Mr. Harvey B. Cochran  
Mr. Sean Coen  
Mrs. Jo Cole  
Mrs. Marie E. Cole  
Mr. Jim Colson  
Mrs. Lucille L. Connors  
Mr. William J. Convery II  
Mr. Donald L. Cook  
Mrs. Kathleen Cook  
Ms. Pat Cook★  
Dors Cooper  
Shayna Cooper  
Susan Cooper  
Ms. Melissa Cordova  
Ms. Tammy Cordova  
Mr. Richard L. Cornwell  
Mrs. Jillian Cress  
Miss Georgiann Crickett  
Mr. Tim Crisler  
Ms. B. J. Croall

Cronk Family  
Aaron Crowther  
Sam Cumming  
Ms. Wendy Cunningham  
Mrs. JoAnne Curran  
Mr. Thomas E. Curran  
Ms. Harriet Dallas†  
Mrs. Krissy Dallmann  
Mr. Rick Dalrymple★  
Ms. Lucia Daniels  
Mrs. Jeanne Danknich  
Ms. Paula R. Davidson  
Mrs. Dayna Davis  
Miss Joy Davis  
Mr. Larry Davis  
Ms. Mary Ann Davis  
Mr. Roger Davis  
Ms. Suzie Davis  
Mr. George Dawkins  
Ms. Claudia Deasy★  
Ms. Emma Del Frate  
Mr. Tristan Delf★  
Mr. Dean Dennis  
Wayne & Betty DeShazer  
Ms. Joan M. Dietrich  
Ms. Connie A. Dineen  
Mr. Tom Dinkel  
Ms. Cassie Dixon  
Mr. Delbert D. Dixon  
Mrs. Jean Dochter  
Ms. Joanne Dodds  
Mr. Mark Dohrman  
Mr. E. Frank Dowling  
Mrs. Sue Downs  
Ms. Lesa Drake  
Dr. Hazel B. Draper  
Mrs. Margaret Driggs  
Ms. Connie Duarte  
Mr. Denis A. DuFresne  
Ms. Tina DuMond  
Mrs. Viki Durnil  
Mr. & Ms. Ken Dusenberry  
Mrs. Lou Duvall  
Ms. Alana Dylan  
Mrs. Anne B. Edwards  
Mr. Edward E. Ellis★  
Mr. John D. Ellis  
Mrs. Edith E. Ellison  
Ms. Jan L. Embree  
Ms. Judith A. English  
Ms. Virginia A. Eppinger  
Virginia M. Erickson†  
Eriksen Family★  
Ms. Cholly M. Eskridge★  
Mr. Juan Espinosa  
Ms. Lucy Espinosa  
Espinosa Family  
Ms. Ginny Ethridge  
Mrs. Frances Evans  
Mr. Martin C. Everitt★  
Mr. Kevin J. Evert  
Mrs. Martha W. Ewald  
Mrs. Connie Fahnestock  
Mrs. Janis Falkenberg  
Mr. Lonnie L. Farmer★

Mrs. Pam A. Fassione  
Mr. A. E. Feist  
Mrs. Barbara Ferguson  
Mr. Jim Fern★  
Ms. Flo Fernandez-Ramos  
Ms. Jan Ferrero  
Mr. & Mrs. Wallace D. Finley  
Mrs. Asta I. Finney  
Ms. Susan Finzel-Aldred  
Mr. Gene Fisher  
Mr. Randy Fisher  
Ms. Joan A. Flower  
Ms. Barbara A. Ford  
Matt Forsberg  
Mr. Brooks Fountain  
Mrs. Shirley S. Fowler  
Mr. Wade Franck  
Ms. Christie Frank  
Ms. Joyce E. Fresques  
Mr. Bill Frueh  
Mrs. Geni Furlong  
Ms. Joan Gabel  
Mr. Dennis L. Gahagen  
Mrs. Charlene L. Gail  
Ms. Tish G. Gallagher  
Mr. Brandon Gallegos  
Ms. Kay Gallagos  
Mr. Ray Gallegos  
Mr. Ross Gallegos  
Mrs. Anjelica Gamboa  
Ms. Rene Gamboa  
Ms. Yolanda Gamboa  
Mrs. Deanna E. Ganskow★  
Artemio Garcia  
Mr. Michael Garcia  
Mr. George Garcia  
Ms. Rose Gaudio  
Ms. Annette M. Gavigan  
Ms. Ginny D. Gelbach  
Ms. Marjorie Gerson★  
Mr. & Mrs. John Gethen  
Miss Lisa M. Giannascoli  
Mrs. Linley T. Gibson  
Ms. Karen Giebler  
Ms. Karin Gieske  
Mrs. Katherine L. Gilliland  
Mr. Neal D. Gilmore★  
Ms. Lydia Giron  
Mrs. Barbara C. Gish  
Mrs. Dorothy M. Glaros  
Mrs. Debra H. Glen  
Ms. Victoria Gomez  
Mr. Harry Gonzales  
Mr. Levi Gonzales  
Mr. Henry Gonzalez★  
Mrs. Ilene M. Good  
JoAn M. Goodman  
Mr. William R. Grabau  
Mr. & Mrs. Weldon Graham  
Mrs. Phyllis Grantham  
Ms. Jill Gray  
Shawn Greco  
Walt Greco  
Mrs. Margaret Greivel  
Ms. Jill Grey

Ms. Beth Griffin  
Mr. Ted Griffis  
Ms. Elena M. Griffith  
Mrs. Sophie B. Griffith  
Mr. Rick Grzedzicki  
Mr. Ben Guerrero  
Mr. Lloyd W. Gundy★  
Ms. Carmen Gureasko  
Terry Guriell  
Mr. Pete Gusman  
Mrs. Joy Gyrman  
Mrs. Marjorie M. Haagenson  
Ms. Betsy R. Hackemer  
Mrs. Mary E. Hadad  
Mr. Ponch Hall  
Mrs. Terry P. Halladay  
Ms. Sandra E. Hamilton  
Ms. Linda Hampton  
Ms. Janette Hance  
Mr. John E. Hanna  
Mr. Ken Hansen  
Mr. Scott M. Hardin  
Mrs. Patricia A. Harding  
Noel Harlan  
Mrs. Del L. Harmer  
Mrs. Peggy Harper  
Ms. Sallie Harper  
Mr. B. G. Harris  
Mr. Charles Harris  
Mr. Ralph Harris  
Ms. Susan Harris  
Mrs. Vern E. Harris  
Mr. Jim Harsh  
Mrs. Mary C. Hartley  
Mr. Robert E. Hartley  
Mr. Andrew Hartman  
Ms. Carrie Hartmann★  
Ms. Julie Hartman  
Mrs. Mary T. Hartman  
Ms. Christine M. Hartness  
Mr. Robert Harvey  
Ms. Kathy L. Hass  
Mr. Dave Haughton  
Mrs. Eleanor C. Hayden  
Mr. David Hayes  
Mr. Erwin R. Hayes★  
Ms. Teresa Haynes  
Ms. Elizabeth N. Heacock  
Mrs. Dorothy F. Healy  
Ms. Frances L. Heintzelman  
Ms. Carolyn R. Heller  
Mrs. Barbara L. Hemenway  
Mr. Bob Hench  
Mrs. Kathleen M. Hendricks  
Ms. Dorothy Herbertson  
Mr. Jose deJesus Hernandez  
Ms. Laura Hiatt  
Ms. Dorsy R. Hill  
Mrs. Marjorie L. Hill  
Mr. Ray L. Hilliard  
Mr. Curtis J. Hilyard  
Mrs. Mary Ann Hire  
Ms. Cynthia L. Hirsch  
Mr. Robert W. Hirsch  
Mrs. Rosalyn A. Hirsch★



Ms. Eleanor Hixon★  
 Mrs. Mary Ellen Hobbs★  
 Mrs. Noi Hober  
 Mrs. Shirley Hobson  
 Mr. J. Michael Hoehn  
 Mrs. Catherine M. Hoerter  
 Ms. Sharon Hoffman  
 Mr. Santana Holback  
 Doug & Joyce Holdread  
 Ms. Lynn Holle-Moore★  
 Ms. Sarah Holton  
 Mrs. Lisa Hoots  
 Mr. Robert Hopkins  
 Mr. & Mrs. Ken Hornby  
 Mr. Wesley M. Howe  
 Mrs. Kathy Humphry  
 Ms. Corinne V. Hunt★  
 Mr. Bob Huntington  
 Mr. Mark Huston  
 Mrs. Shirley Incitti  
 Mr. Arthur Infante  
 Ms. Alice Inzel  
 Jackson Family  
 Mr. Tim Jansson  
 Mrs. Sharon R. Jarrett  
 Mr. Fredrick O. Jeffries  
 Mrs. Dottie Jeltema  
 Mrs. Linda L. Jensen  
 Mr. & Ms. Paul Jensen  
 Mr. & Mrs. Paul John  
 Amanda Johnson  
 Mrs. Dorothy Mae Johnson  
 Juliet Johnson  
 Ms. Marie R. Johnson-Sterling  
 Mr. Bob Johnston, Jr.  
 Mrs. Edith Johnston  
 Mr. John H. Jones★  
 Mrs. Frances M. Jorgenson  
 Ms. Marjorie Joseph★  
 Mrs. Marion E. Jump★  
 Mrs. Liz J. Jurkowski  
 Ms. Lorraine A. Kahler  
 Mr. Milt S. Kanzaki★  
 Ms. Kate D. Kasperski  
 Ms. Fay B. Kastelic  
 Ms. Phyllis E. Kauffman★  
 Mrs. Paula J. Kendrick  
 Ms. Barbara J. Kennedy  
 Tom Kenyon  
 Mrs. Gail L. Khasawneh  
 Mr. & Ms. Doug Kidd  
 Mrs. Sharon Kiefer  
 Mrs. Jill C. Kinney†  
 Mr. Keith E. Kirby  
 Mrs. & Mr. Patricia A. Klomp  
 Mrs. Mildred M. Kolquist  
 Ms. Louise S. Korneffel  
 Mrs. Josephine Kozacek  
 Mrs. Janet Kraus  
 Mr. Paul Kraus  
 Miss Viola M. Kriz★  
 Mrs. Mary A. Kroneberger  
 Mr. Mike Krupa†  
 Mr. Harold A. La Fleur  
 Ms. Modupe G. Labode

Miss Luise M. Lackemann  
 Ms. Marjorie P. Lamb  
 Ms. Mona M. Lambrecht  
 Mrs. Lois Lana  
 Mr. Ronald J. Landberg  
 Ms. Maria V. Lane  
 Ms. Jean M. Larrick★  
 Lyman Larson  
 Ms. Harriet J. Latham★  
 DJ Latino  
 Ms. Susan Latocha  
 Ms. Rebecca Laverneway  
 Ms. Carol Law  
 Ms. Lynn Lawlor  
 Ms. Monica Lawrence  
 Mr. Alvaro Lechuga  
 Mrs. Brenda Lechuga  
 Mr. Jerry Leitschuh  
 Mr. Christopher Lentz  
 Ms. Elena Lentz  
 Mr. & Mrs. Barney Leon  
 Mrs. Barbara S. Levin  
 Mrs. Prue Lewand  
 Mr. & Ms. Lowell Little  
 Dr. Alan Lloyd  
 Mr. & Mrs. Eugene Lobato  
 Mr. Scott Logan  
 Mrs. Joyce B. Lohse  
 Mr. Rick Lohsen  
 JJ Lonsinger  
 Ms. Julie Lopez  
 Mr. Philip C. Lovato★  
 Ms. Barbara Lovell  
 Miss Caroline J. Lowsma  
 Mrs. Paula Lucas  
 Ms. Priscilla Lucero  
 Mrs. Alvera K. Ludwig  
 Ms. Allison Luppa  
 Mrs. Florence O. Lyons  
 Ms. Dory Macaluso  
 Cameron MacBeth  
 Ms. Elizabeth MacDougall  
 Ms. Ritzi Mackenzie★  
 Mrs. Marjorie E. MacLachlan  
 Ms. Jo C. Madden  
 Ms. Glenda Maes  
 Ms. Mercedes B. Magee  
 Mrs. Lyn Magette  
 Ms. Mary S. Magino  
 Mr. Charles Mandeville  
 Mr. Josh T. Mangiagli  
 Ms. Mary Sue Mangino  
 Mr. Jim C. Mangus★  
 Mrs. Elaine Manifold  
 Ms. Sandy Manifold  
 Ms. Eileen Marie  
 Ms. Julie Marino  
 Mr. Regi Marquez  
 Mr. George B. Marshall  
 Mr. Bryce Martin  
 Ms. Carmen Martin  
 Mr. Ernest Martin  
 Ms. Terri Martin  
 Ms. Flora Martinez  
 Ms. Marge Martinez

Ms. Marie Martinez  
 Ms. Priscilla Martinez  
 Mr. Raphael Martinez  
 Ms. Deborah Martinez-Martinez  
 Ms. Theresa M. Martini  
 Ms. Janica Martynow  
 Mrs. Diane Mason  
 Mr. Xavier Maury  
 Mrs. Jean-Carol McCammon  
 Mrs. Kelly McCarthy  
 Mr. Peter McCarthy  
 Seana McCarty  
 Ms. Ellen McCullough  
 Ms. Lyndsey McCumsey  
 Mr. Alan McFadden  
 Debon McFarland  
 Ms. Devon A. McFarland  
 Pat McFarland  
 Mrs. Sara McFarland  
 Mr. Tim McGettigan  
 Ms. Marcia Jane McGilvray  
 Ms. Pamela A. McGivern  
 Mr. Frank A. McGregor  
 Ms. Nita W. McGrew  
 Mr. Jack C. McKee  
 Mrs. Maxine McKee  
 Ms. Babs McKnight  
 Ms. Biranna McLaughlin  
 Mrs. Jean McLaughlin  
 Mr. Daniel L. McNamara  
 Samantha McNeil  
 Thomas McNeil  
 Mrs. Lovella J. McNutt  
 Ralph & Mary McPherson  
 Mrs. Faye J. Mead†  
 Mr. Frank Medina, Jr.  
 Mrs. Jean S. Meeks  
 Mr. & Mrs. Ed Meinhold  
 Mrs. Marge Melle★  
 Mrs. Barbara R. Meyer†  
 Ms. Linda L. Meyer  
 Mrs. Stacey L. Meyer  
 Mr. Elton Miller  
 Ms. Heather D. Miller  
 Ms. Kay M. Miller  
 Ms. Mary E. Miller★  
 Mrs. Patricia S. Miller  
 Ms. Sally Miller  
 Ms. Victoria Miller  
 Ms. Martha Milne  
 Mrs. Suzanne D. Minear  
 Ms. Linda Mishkin  
 Ms. Marianne Mishmash  
 Mr. Kevin Mondragon  
 Mr. Tyrone Monteleone  
 Ms. Margie G. Montez  
 Mr. Dustin Montoya  
 Mr. Jeff Montoya  
 Ms. Anne Moore  
 Ed Moore  
 Hilliard Moore  
 Mr. Ray Moore  
 Travis Moore  
 Mr. Gilbert Mora  
 Mr. Michael Moreno

Mrs. Vicki A. Morton  
 Mr. John Moullette  
 Mrs. Margaret Moyer  
 Dr. John P. Moyer  
 Mrs. Marge Mueller  
 Mr. Milton L. Mueller  
 Mrs. Ann Mulford  
 Ms. Colista Murphy  
 Ms. Sara Murphy  
 Ms. Suzanne Murphy  
 Mr. Melvin Murray  
 Mrs. Florence G. Myers  
 Pat Nagler  
 Mr. Ronald S. Nagy★  
 Mr. & Mrs. Herb Nakaya  
 Mrs. Marilyn G. Naper  
 Mr. Braxton Neeley  
 Mrs. Carol Neiswonger  
 Mr. Gary Neiswonger  
 Ms. Marilyn A. Nelson  
 Mrs. Nancy A. Nelson★  
 Mr. Robert D. Nelson★  
 Ms. Anna M. Neorda  
 Ms. Jennifer A. Nevins  
 Mrs. Sharon L. Newman  
 Mr. & Mrs. Bob Nichols  
 Mr. Sam Nickerson  
 Mrs. M. Bernice Nielsen  
 Mrs. Marilyn Nold  
 Ms. Dorothy Novakowski  
 Ms. Colleen A. Nunn  
 Darcy O'Donnell  
 Ms. Joann O'Hagan  
 Mr. Ray N. O'Loughlin  
 Ms. Naoma O'Neill  
 Ms. Maxine Obleski★  
 Ms. Peggy Obrey  
 Ms. Joanne Ogren  
 Mr. Stan Oliner  
 Mr. Dave Olsen  
 Mr. & Mrs. Ray Opper★  
 Ms. Ann Orr  
 Mr. V. Alden Orr  
 Ortiz Family★  
 Mr. Lawrence Pacheco  
 Ms. Frances M. Padilla  
 Mr. Donald H. Palmer★  
 Ms. Joan E. Palmer★  
 Mrs. Elizabeth Papp  
 Jeromy Parker  
 Mrs. Margaret A. Parker  
 Tammy Parker  
 Ms. Debby Parrish  
 Ms. Marlene L. Parrish★  
 Mr. Victor Parrish  
 Mrs. Rose Passarelli  
 Mrs. Bonnie Pastor  
 Mrs. Mabel Pattridge  
 A. J. & Linda Pavol★  
 Mrs. Saleta S. Peck★  
 Ms. Marian R. Pennington  
 Mr. Gilbert Perales  
 Mrs. Vivian R. Pereboom  
 Mrs. Joanne Peters  
 Mr. Ted W. Peters

Ms. Cynthia Phillips  
 Ms. Liz Phillips  
 Mrs. Mickey Phillips  
 Mrs. Christy C. Pickett  
 Mr. George Pierce  
 Mrs. Anjelica Pineda  
 Sam & Kathy Pisciotta★  
 Ms. Elizabeth Platt  
 Mr. Truman Pooler  
 Mr. John C. Pringle★  
 Mrs. Ernie Pyle  
 Mrs. Patricia R. Quade★  
 Ms. Cynthia L. Rand  
 Ms. Lavinia Rascon  
 Mr. H. D. Rauchenstein  
 Mrs. Patricia Rauchenstein  
 Mrs. Della Ray  
 Mrs. Lena F. Raymond  
 Mr. William J. Raymond  
 Ms. Margie Reed  
 Mr. Ray Reed  
 Mrs. Virginia M. Reichert  
 Mrs. Nadeen Reinecke  
 Mr. Mandell Reliford★  
 Mrs. Anna Mae Reorda  
 Mr. Patrick H. Reynolds  
 Mrs. Olene M. Rhody  
 Mrs. Rita R. Richards  
 Ms. Marci Riddell  
 Mr. Dennis Riddock  
 Mrs. Dorothy P. Ridinger  
 Mrs. Mary Kim Rietman  
 Mr. Elijah Riggs  
 Dr. Francisco Rios★  
 Mrs. Betty L. Ritter  
 Ms. Jennifer M. Robbins★  
 Mr. Will S. Roberts  
 Mr. Danny Rogers  
 Ms. Beatrice B. Romero★  
 Ms. Jessica A. Romero  
 Ms. Bridget A. Romero-Keightley  
 Miss Ashley D. Roop  
 Mr. Arthur Rosener  
 Mrs. Nancy M. Rosi  
 Mr. Dick Ross  
 Mr. Tim Roten★  
 Mary Roth  
 Mr. Theodore L. Rouses★  
 Mrs. Charlotte G. Rubin  
 Mr. & Ms. Jack Rudder  
 Mr. "Big Mike" W. Ruether  
 Ms. Jeannie Russell  
 Mrs. Mary E. Russell  
 Mrs. Alberta A. Ryan  
 Mrs. Mary-Nelle Ryan  
 Ms. Sheila Ryan  
 Ms. Joanna Saenz  
 Jelly Saenz  
 Mr. & Mrs. Ed Sajbel  
 Ms. Carol Salzman  
 Ms. Michelle Samsow  
 Ms. A.J. Sanchez  
 Ms. Betty Sanchez  
 Ms. Nancy Sanchez  
 Savina Sanchez  
 Pat Sanders

Ms. Lisa Sargent  
 Mrs. Joan T. Schaal  
 Mr. & Mrs. Bob Schaefer  
 Mrs. Helene Schaefer  
 Ms. Lin Schaffer  
 Mr. Greg Schell★  
 Mr. Scott Schermer  
 Ms. Betty J. Schmidt  
 Mr. Bob Schmidt  
 Mrs. Kaye L. Schmitt  
 Mrs. Marian Bullis Schrader  
 Mr. Curtis Schramm  
 Mr. Doug Schramm  
 Mrs. Mary Schulte  
 Miss Dorothy L. Schutz  
 Mrs. Doris A. Schwartzberg  
 Mr. Mike Sciortino  
 Ms. Janet Scott  
 Ms. Barbara Seidel  
 Mr. Don Settle  
 Ms. Donna L. Shank  
 Mr. Charles E. Sharrock★  
 Mrs. Iris R. Shaw  
 Ms. Hannah Shepard  
 Mrs. Ruth H. Shepard  
 Mrs. Wanda M. Shipman  
 Phyllis E. Shotkoski  
 Mr. Greg Sinn  
 Mr. & Mrs. Blaine Sloan  
 Mr. Rod Slyhoff  
 Chris Smith  
 Mr. Jack E. Smith  
 Mrs. Jean W. Smith  
 Mr. Leo H. Smith★  
 Mr. Merwin W. Smith  
 Ms. Shirley M. Smith  
 Mrs. Janet Smola  
 Ms. Judy Sneed  
 Mrs. Liz Heidbrak Snell★  
 Mr. Shawn M. Snow  
 Ms. Anne C. Somerville  
 Ms. Lee J. Sorensen  
 Mrs. Peggy P. Speckman★  
 Mr. Ben Sprouse  
 Mr. & Mrs. Chris Spruell  
 Mr. Ken Stagner  
 Stanley Family  
 Ms. Karen Stansifer  
 Ms. Velma Steele  
 Ms. Sandy Stein  
 Ms. Grace Stephens  
 Ms. June Stephens  
 Mr. Doug Steward  
 Ms. Maxie Steward  
 Mrs. Barbara Stewart†  
 Mr. Frank C. Stewart  
 Mr. George Stewart  
 Ms. Marie Stinchcomb  
 Mr. & Mrs. Hugh H. Stirts  
 Mr. Jason Stoehr  
 Jerry Stokes  
 Mr. Kenneth E. Stone★  
 Mr. Jack Stone  
 Mr. Orrin J. Stransky  
 Mrs. Phyllis W. Stransky  
 Ms. Chris Strickland

Mr. Russell W. Struckman★  
 Ms. Cecilia G. Sullivan  
 Ms. Norma Summer  
 Ms. Catherine F. Summers  
 Mrs. Phyllis L. Summers  
 Mrs. Jane M. Swanson  
 Steve & Terry Swanson  
 Ms. Elsie E. Swensen★  
 Mr. Vincent Szafranko  
 Mr. & Mrs. Tafoya  
 Mr. Joe Tarabino  
 Ms. Mary Jane Tarver  
 Ms. Twyla Taujillo  
 Mr. David S. Taylor★  
 Ms. Julie Taylor  
 Ms. Ruth Telea  
 Mrs. Jane R. Temple  
 Ms. Mary E. Tenantry  
 Ms. Margot Terry  
 Ms. Mira M. Theisen  
 Mr. Douglas Thomason  
 Mrs. Diana M. Thompson  
 Mrs. Jerrye Thompson  
 Mr. Troy J. Tice  
 Ms. Carol Todeschi  
 Ms. Diane Tomecek  
 Ms. Darlene R. Toomey  
 Mrs. Katharine C. Topper  
 Ms. Florance Torres  
 Mr. George Torres  
 Ms. Patricia A. Towey  
 Mr. John M. Trammell  
 Mrs. Pat Trommeter  
 Ms. Marlene Trujillo  
 Mrs. Marcia M. Turman  
 Dr. Ted A. Ulrich★  
 Dr. M. E. Vallejo  
 Mr. Edward Vallejos  
 Ms. Helen Van Orman★  
 Ms. Marjorie J. Van Wyk  
 Ms. Debbie Vaudrin  
 Ms. Jaime Vaudrin  
 Ms. Jill Vaudrin  
 Mrs. Jan Vest  
 Ms. Mary Vigil  
 Ms. Virginia Vigil  
 Mrs. Eleanor V. Vincent  
 Mrs. Sally A. Vincent  
 Mrs. Martha B. VonHagen  
 Mrs. Judith B. Vorndran  
 Mr. Charles Wadleigh★  
 Mr. Donald R. Walcher  
 Mrs. Winifred Walcher  
 Mr. & Ms. Ethan Waldron  
 Ms. Janet S. Walker  
 Miss Nicole A. Walker  
 Mr. Robert M. Walker  
 Ms. Joan Walker Enger  
 Ms. Joan Wallace  
 Mrs. Carol M. Warner  
 Mr. Kenneth C. Warner  
 Mrs. Virginia D. Warner  
 Ms. Connie E. Washington  
 Mrs. Ezra Waterland  
 Nehemiah Waterland

Mr. Paul Waterland  
 Mrs. Shirley O. Waters  
 Mrs. Bonnie Webb  
 Mr. Brian Webber  
 Mrs. Margaret B. Weiland  
 Mrs. Rachel R. Weinberg  
 Mrs. Grace Weinel  
 Mr. John Wendelburg  
 Mrs. Jacqueline Wenger  
 Mr. & Mrs. Bob D. Wertz  
 Mr. Mike West  
 Ms. Shermita West★  
 Mrs. Julia Westerberg★  
 Mrs. Nancy J. Westman  
 Miss Wendy J. Wham  
 Ms. Rose Marie Wheeler  
 Ms. Mary C. Wheelock  
 Mrs. Dorothy S. Whitaker  
 Ms. Julie White  
 Mrs. Barbara R. Whitney  
 Ms. Amy S. Theodore  
 Ms. Jennifer Whitney  
 Ms. Katrice Whitney  
 Mrs. Lois M. Whitney  
 Mrs. Helen Wiedenfeld  
 Mrs. Loree P. Wilcox  
 Mrs. Jeannine A. Wilkinson  
 Ms. Trish Willett  
 Ms. Lola J. Williams  
 Mrs. Margaret Williams  
 Mrs. Nancy Williams  
 Mr. Perry Williams  
 Mr. Ray Williams  
 Mr. William D. Williams  
 Mrs. Kay Willson  
 Mrs. Dorothy M. Wilson  
 Mr. Earl S. Wilson  
 Mrs. Fern S. Wilson  
 Mr. Jack S. Winter★  
 Mr. George R. Wolf  
 Ms. Patsi Wolf  
 Mrs. Verna M. Wolf  
 Mrs. Joyce J. Wolff  
 Mr. Walter P. Wolff  
 Ms. Dorothy Woods  
 Ms. Janet Woods  
 Ms. Jean Woytek★  
 Ms. Naomi Yellowhair  
 Ms. Gloria E. Zakus  
 Ms. Karen K. Zayaz  
 Mrs. Frances Zepin★  
 Mr. Dan Zerkel  
 Mr. Sean K. Ziegler  
 Ms. Amy B. Zimmerman★  
 Ms. Barbara Zimmerman  
 Mr. Bill Zwick

## Volunteer Groups

Altrusa International of Pueblo  
 Garden Thyme Club  
 James Beckworth Mountain Club  
 Las Animas County Probation  
 Department/Community  
 Service  
 Pride City Quilt Guild

# Community Support

**D**onors who support the Colorado Historical Society live the mission by lending their voice to the chorus of those who value Colorado's past enough to collect, preserve, and interpret it.

## Corporate Members

### Platinum—\$5,000

Casino Owners Association of Colorado  
Farrell-Roeh Group, LLC

### Gold—\$2,500

The Creative Alliance  
Morton Publishing Company  
Tayside Associates LLC  
Wells Fargo

### Silver—\$1,000

Andrews & Anderson  
Antonoff & Co.  
Bank One Colorado, N.A.  
Becker Stowe & Bieber LLC  
Brown Palace Hotel  
Cherry Creek Shopping Center  
Colorado Business Bank  
The Colorado Mountain Club  
Colorado Rockies Baseball Club  
David Owen Tryba Architects  
Gary-Williams Energy Corporation  
Honnen Equipment Company  
ING Security Life of Denver  
The Integer Group  
Nostalgic Homes  
Panera Bread  
Robinson Dairy, Inc.  
Royal Gold, Inc.  
Sir Speedy  
TIAA-CREF  
TIMET  
Trinity United Methodist Church  
UMB Bank  
Wright Water Engineers  
Wynkoop Brewing Company

### Bronze—\$500

Alvarado Construction Co.  
George K. Baum & Company  
The Berger Funds  
Boa Construction, Inc.  
Brownstein Hyatt & Farber  
Colorado Airlines  
CTM Inc.

Cushman & Wakefield, Inc.  
Eldorado Artesian Springs  
Excel Roofing, Inc.  
Holland & Hart LLP  
Hotel Boulderado  
Johnson Storage & Moving Co.  
Kaiser Permanente  
KCNC News 4  
Keyline Graphics  
The Last Detail  
Mortenson Construction Company  
New Communities  
Newman & Associates  
Onofrio Piano  
OZ Architecture  
The Potted Garden  
Randcorp, Inc.  
Rickenbaugh Cadillac Volvo  
Riverfront Park Community Foundation  
Root Rosenman Architects LLP  
Silversmith Cohen Properties LLC  
Sprung Construction  
St. Charles Town Company LLC  
Watermill Express

### Millennium Member

Mr. and Mrs. William G. Griffith

### Heritage Club Members

Mr. & Mrs. Hartman Axley  
Mr. & Mrs. William F. Beattie  
Mrs. Harold R. Bowes  
Mr. & Mrs. Alvin J. Burnett  
Mr. & Mrs. Brown W. Cannon, Jr.  
Mr. & Mrs. C. Robert Chow  
Dr. & Mrs. S. Robert Contiguglia  
Mr. & Mrs. Stanley Dempsey  
Mr. & Mrs. Cortlandt S. Dietler  
Mr. & Mrs. Gregory Drumm  
Mrs. Maud Duke  
Mr. & Mrs. William S. Falkenberg  
Mr. & Mrs. Frederick Fisher  
Mr. & Mrs. James P. Fugere  
Dr. & Mrs. F. A. Garcia  
Mr. & Mrs. J. D. Garrett  
Mrs. Carol K. Gossard

Mr. & Mrs. Edwin H. Grant, Jr.  
Mr. Hugh Grant/Vance Kirkland Foundation  
Mr. & Mrs. James R. Hartley  
Mrs. Mary N. Hobart-McCotter  
Mr. Robert L. Jund  
Mr. & Mrs. Walter A. Koelbel  
Ms. Helen E. Kriebel  
Mr. & Mrs. Frank A. Kugeler  
Mr. & Mrs. William C. Kurtz  
Mr. & Mrs. James R. McCotter  
Mr. Douglas N. Morton & Ms. Marilyn L. Brown  
Dr. & Mrs. Conrad M. Riley  
Mr. & Mrs. Bruce M. Rockwell  
Mr. & Mrs. Eaton Smith  
Mr. Benjamin F. Stapleton III  
Mr. & Mrs. Bayard K. Sweeney, Jr.  
Dr. & Mrs. Thomas N. Vincent  
Mr. & Mrs. Robert I. Woodward

### Historian Members

Anonymous  
Mrs. Sue Anschutz-Rodgers  
Mr. & Mrs. Ron G. Askew  
Dr. John S. Baird  
Mr. & Mrs. Jerry Bakke  
Mr. & Mrs. Richard G. Ballantine  
Mr. & Mrs. Medill M. Barnes  
Mr. W. Randolph Barnhart  
Mr. & Mrs. Steven Bathgate  
Mr. & Mrs. Bruce D. Benson  
Mr. W. Bart Berger  
Mr. & Mrs. George W. Bermant  
Mrs. Regina M. Black  
Mr. & Mrs. B. K. Borgen  
Mrs. Dorris I. Brown  
Mr. Peter C. Bulkeley & Ms. Edith Conklin  
Mr. & Mrs. J. Robert Cameron  
Mrs. Dana H. Crawford  
Mrs. Mary Ann G. Davis  
Dr. William E. Davis  
Ms. Heather Durham  
Mr. Norman J. Ehrgott  
Mr. & Mrs. Larry J. Engelken  
Mr. & Mrs. Clark B. Ewald  
Mr. & Mrs. Hubert A. Farbes, Jr.  
Mr. & Mrs. Melvin Flanagan  
Mr. & Mrs. Sam E. Forbes  
Mr. & Mrs. Mark M. Foster  
Mr. Bud Gamel  
Mr. Merle J. Gast & Ms. Beverly S. Shick  
Mr. & Mrs. George C. Gibson  
Mr. Stephen W. Gillette  
Mr. & Mrs. William W. Grant  
Mr. & Mrs. Samuel P. Guyton  
Dr. & Mrs. Robert J. Harmon  
Mrs. Ellen G. Harris  
Mr. & Mrs. Charles R. Hazelrigg  
Mr. Ed Hurry & Dr. Roberta Shaklee  
Mr. & Mrs. Alfred T. Ireson  
Mr. D. Scott Johnson  
Mr. & Mrs. Thomas M. Keesling  
Mr. Richard S. Klingenstein  
Mr. & Mrs. Arthur M. Klinowski  
Mr. & Mrs. William C. Knodt  
Colonel Barbara J. Kuennecke USAF  
Mr. & Mrs. James B. Kurtz  
Mr. Eugene A. Lang & Ms. Marguerite L. Johnson  
Mr. Edward Lehman  
Ms. Betty J. Lewis  
Mr. Robert O. Lindig & Ms. Carolyn Fineran  
Mr. & Mrs. W. P. Marcum  
Mrs. Sara Mattes  
James & Lea Mc Anally  
Mr. & Mrs. William C. McClearn  
Dr. & Mrs. Kenneth Medearis  
Ms. Melanie Milam  
Mr. & Mrs. Edward B. Miller  
Mr. Robert N. Morehead  
Mr. & Mrs. John E. Moyer  
Mr. & Mrs. K. L. Nelson  
Mr. Stan Oliner  
Mr. Harold L. Oliver  
Mr. & Mrs. Daniel K. Paulien  
Mrs. Joan P. Pechman  
Mrs. Nancy Petry  
Dr. & Mrs. Peter J. Philpott  
Mr. & Mrs. Edward D. Pierson  
Mrs. Jane M. Quinette  
Mr. Laurence E. Riordan & Mrs. Iola A. Baker  
Mr. & Mrs. Chris R. Root  
Mr. Walter S. Rosenberry III  
Mrs. Faye G. Schayer  
Mr. Joe Shepard  
Mr. & Mrs. Thomas C. Schupert  
Mr. David Sislowski & Ms. Julie Babcock  
Mrs. James Spillane  
Dr. Robert L. G. Stears  
Mr. Richard D. Steele  
Mr. & Mrs. Erik S. Taylor  
Mr. & Mrs. David E. Temple  
Mr. & Mrs. Charles I. Thompson  
Dr. & Mrs. Henry W. Toll, Jr.  
Mr. & Mrs. J. E. Wagner  
Mrs. Josephine B. Waterman  
Mr. & Mrs. P. M. Westfeldt  
Dr. & Mrs. William B. Wilson, Jr.

## Centennial Members

Mrs. Joanne L. Abbott  
Mr. Eric Adams  
Mr. & Mrs. Cyrus G. Allen  
Mr. & Mrs. A. W. Armour IV  
Ms. Mary J. Armstrong  
Mr. Samuel P. Arnold  
Mr. & Mrs. S. Robert August  
Mr. & Mrs. Brad Augustine  
Jack & Judy Austin  
Mr. B. C. Baggett  
Mrs. Anne P. Bailey  
Mrs. Alice Bakemeier  
Mr. & Mrs. Dennis E. Baldwin  
Mr. & Mrs. Robert C. Baron  
Mr. & Mrs. Lawrence E. Barrett  
Mrs. Emmy Baum  
Mr. & Mrs. Robert H. Bell  
Ms. Dale Benincasa  
Ms. Ann-Carolyn Bennett  
Mr. John A. Berglin  
Mr. & Mrs. Paul Blanchard  
Mr. & Mrs. Broooks W. Bond  
Mr. Walter R. Borneman  
Mr. & Mrs. Donald G. Brandborg  
Mr. Rodney Bridgers  
Ms. Coralie A. Brown  
Mr. & Mrs. Charles Klublitz  
Mr. & Mrs. M. Peyton Bucy  
Mr. & Mrs. Donald H. Burkhardt  
Dr. & Mrs. Walter J. Bushnell  
Cletus & Elizabeth Byrne  
Mr. & Mrs. Martin L. Cahill  
Mr. Paul D. Campbell &  
Ms. Nora E. Morgenstern  
Charles & Kathleen Cannon  
Mr. & Mrs. Willis V. Carpenter  
Mr. Mark H. Carson  
Mr. & Mrs. John A. Carver  
Mrs. Lorraine E. Cervanyk  
Mrs. Susan Chambers  
Mrs. Linda G. Cherrington  
Mr. & Mrs. Don A. Chubb  
Mr. & Mrs. James C. Cohig  
Dr. & Mrs. Thomas F. Cope  
Mr. & Mrs. John Coughenour  
Mr. & Mrs. Stephen T. Cox  
Ms. Marilyn A. Craddock  
William & Rhonda Crossen  
Mr. William Jay Crowley  
Dr. Susan R. Crutchfield  
Ms. Cynthia G. Daniels  
Mr. & Mrs. John C. Davis IV  
Ms. Laura J. Davis &  
Ms. Angela M. DeSantis  
Dr. & Mrs. Steven O. Davis  
Mr. & Mrs. R. L. Deane  
Mr. Fred A. Deering  
Mr. & Mrs. Arthur C. Delaney

Mr. & Mrs. Robert E. Deline  
Mr. George Dengler  
Mr. J. E. Devilbiss  
Dr. Thomas F. Dietvorst &  
Ms. Virginia A. Berkeley  
Mr. & Mrs. Lee W. Dines  
Mr. & Mrs. Thomas F. Dorsey  
Dr. & Mrs. Stan Dyck  
Mr. Mark D. Ebinger &  
Mr. James Burton  
Jerry & Dottie Eisenach  
Mr. & Mrs. Walter C. Emery  
Mr. Ron Emrich  
Ms. Christine Stoiber Fahlund  
Mrs. Kay R. Fair  
Mr. James A. Fanning  
Mr. W. D. Farr  
Mr. & Mrs. Jay Fetcher  
Ms. Linda Finley  
Mr. & Mrs. Dale Fitting  
Mr. & Mrs. Norman H. Fox  
Ms. Eleanor Fry  
Mr. & Mrs. Tony Gagliardi  
Mr. & Mrs. Frank G. Gale  
Ms. Marilyn C. Gamble  
Ms. Cynthia J. Garnier &  
Mr. Kenneth Hisamoto  
Mr. Charles C. Gates  
Mr. & Mrs. William F. Gerety  
Hackett Johnson Foundation  
Mr. & Mrs. Robert P. Hackstaff  
Mrs. Charles H. Haines  
Mr. Charles Halaska, Jr.  
Mr. Joseph W. Halpern  
Mr. John M. Hanford Jr.  
Dr. Charles A. Harbert  
Mr. & Mrs. James E. Hartmann  
Mr. & Mrs. Leo J. Hayward  
Mr. & Mrs. Richard Hentzell  
Mr. & Mrs. Randy L. Hiler  
Mr. & Mrs. Robert F. Hill  
Mr. & Mrs. William R. Hoagland  
Dr. & Mrs. Robert J. Hoehn  
Mr. & Mrs. Harlan H. Holben  
Mr. & Mrs. Wayne C. Holcomb  
Mr. & Mrs. E. Peter Honnen  
Mr. & Mrs. George M.  
Hopfenbeck, Jr.  
Mr. & Mrs. John Howell  
Mr. & Mrs. Robert S. Howey  
Mr. & Mrs. William S. Jackson  
Mr. Robert P. Jacobsen  
Mr. & Mrs. Kenneth C. Jessen  
Mr. & Mrs. Howard J. Johnston  
Mr. & Mrs. James J. Johnston  
Mr. & Mrs. Douglas Jones  
Mr. & Mrs. John M. Kehm, Jr.  
Mr. & Mrs. Edward R.  
Kellenberger

Kesef, LLC/Mr. Evan Makovsky  
Mr. Jerry Kerkhove  
Mr. James M. King  
Mr. Louis J. King  
Mr. & Mrs. Richard A. Kirk  
Mr. Roger D. Knight III  
Mr. Walter A. Koebel, Jr.  
Mr. & Mrs. John Lapp IV  
Mr. & Mrs. Dayl A. Larson  
Mr. & Mrs. Stephen W. Larson  
Ms. Janice L. Laughlin  
Mr. & Mrs. J. Peter Laux  
Mr. Harold H. Lee  
Mr. & Mrs. Robert L. Lee  
Ms. Mary L. Lewis  
Mr. & Mrs. Paul Locklin  
Kristian & Mary Jane Loevlie  
Mrs. Paula Lucas  
Mr. Ronald Lundquist  
Mr. & Mrs. Robert W.  
MacCannon  
Mr. Donald D. Mackenzie  
Margaret McDonald Boss Trust  
Mr. & Mrs. Gavin R. Mallett III  
Mr. R. L. Martinson  
Mr. & Mrs. Gary L. Martyn  
Mr. & Mrs. W. Nicholas V.  
Mathers  
Mr. John P. McFarland  
David & Jennifer McGuire  
Mrs. & Mr. John McInnes  
Mr. Richard S. Merrell  
Ms. Claudia B. Merthan  
Mr. Thomas B. Miller  
Mrs. Dorothy R. Mizer  
Reverend & Mrs. Kenneth G.  
Moreland  
Mrs. Susan K. Mostow  
Dr. & Mrs. Michael J. Moynihan  
John K. Mullen Foundation  
Mr. William D. Neighbors  
Mrs. Nancy A. Nelson  
Dr. & Mrs. Thomas J. Noel  
Mr. Charles E. Norton  
Ms. Margaret A. Olson  
Mr. & Mrs. Laurence T. Paddock  
Dr. Frederick R. Paquette  
Mr. & Mrs. Gary E. Parish  
Mrs. Virginia L. Park  
Mr. Monte Pascoe &  
Senator Pat Pascoe  
Mr. & Mrs. Richard E. Pate III  
Dr. & Mrs. Bruce C. Paton  
Mrs. Mabel Pattridge  
Mrs. Arlene H. Payne  
Mr. & Mrs. Perry C. Peine  
Mr. Laurence A. Peterson  
Mr. & Mrs. Allan O. Pfnister  
Ms. Barbara Phelps

Mrs. Clara V. S. Phipps  
Mr. Bruce Plomondon  
Keith & Mimi Pockross  
Ms. M. Marjorie Price  
Mr. John M. Prosser &  
Dr. Ann T. Prosser  
Marian & Dick Ramsey  
Mr. & Mrs. Timothy E. Ramsey  
Mr. & Mrs. James H. Ranniger  
Ambassador Joseph Verner Reed  
Mr. Robert B. Renfro II  
Mr. & Mrs. Robert S. Rich  
Miss Tamara Risselle Richert  
Dr. & Mrs. John F. Roberts  
Mr. & Mrs. David Robertson  
Mr. & Mrs. David E. Rosenson  
Mr. & Mrs. George M. Ross  
Dr. Jennie M. Rucker  
Mr. & Mrs. Rowe Rudolph, Jr.  
Mr. & Mrs. Vernon A. Rutherford  
Mr. & Mrs. Michel Salbaing  
Mr. & Mrs. Errol F. Salter  
Mr. & Mrs. Steven Sande  
Mr. Robert Sandefur &  
Ms. Molly Dominguez  
Stan & Sue Sanders  
Mr. Sid Sather  
Mrs. Rosslyn S. Scamehorn  
Mr. Herbert C. Schalliol  
Mr. & Mrs. Jon N. Schler  
Mr. & Mrs. Robert Schulein  
Mr. & Mrs. George Secor  
Mr. & Mrs. Tom J. Seela  
Mr. & Mrs. Walter C. Seelye  
Ms. Joan B. Shepardson  
Mr. & Mrs. John J. Sie  
Mr. & Mrs. F. Lawrence Singer  
Mr. Britton Smith  
Mr. & Mrs. Duane A. Smith  
Ms. Margaret M. Smith  
Mr. & Mrs. William D. Snare  
Mr. & Mrs. Brian A. Snow  
Mr. Martin Sorensen &  
Mrs. Linda L. Cornish  
Mr. & Mrs. John M. Spillane  
Mr. John R. Sprengle  
Mr. & Mrs. Paul C. Stanko  
Mrs. & Mr. Christine O. Stannard  
Mr. & Mrs. Alva T. Staples  
Mr. & Mrs. Harry C. Starkey  
Mr. & Mrs. Walter A. Steele  
Mr. & Mrs. James Stokes  
Mr. & Mrs. Larry F. Storms  
Anthony & Randi Stroh  
Dr. & Mrs. John E. Struthers, Jr.  
Ms. S. L. Swearingen  
Mr. & Mrs. William E. Sweet III  
Ms. Lee A. Tauck  
Mrs. Diana M. Thompson

Ms. Joyce P. Thurmer  
 Mrs. Catherine Tierney  
 Mr. Curt Todd  
 Mr. & Mrs. Howard A. Tritz, Jr.  
 Robert & Joan Troccoli  
 Mr. Charles I. Tuthill  
 Mr. & Mrs. Ernst D. Uhrlaub  
 Mrs. Vernice T. Van Duzer  
 Dr. & Mrs. Larry N. Vibber  
 Mr. Scott W. Vickrey  
 Mr. & Mrs. Jeff S. Wagener  
 Mr. Herb H. Wallower  
 Mr. Edward A. Walsh  
 Mr. Doug Walter  
 Lester & Rosalind Ward  
 Ms. Helen Watrous  
 Mr. Jeffrey D. Weaver &  
 Ms. Karen L. Spray  
 Mr. Donald J. Weber  
 Mr. & Mrs. Paul Weitzel  
 Dr. Howard C. Wenger  
 Mr. Michael D. West  
 David & Jodi Wetzel  
 Ms. Barbara J. Wheeler  
 Mr. & Mrs. Spier D. Whitaker  
 Mr. & Mrs. Edward D. White III  
 Mr. & Mrs. Edward D. White, Jr.  
 Mr. & Mrs. M. Lee White  
 Mr. & Mrs. William F. Wilbur  
 Mr. David C. Wilhelm &  
 Ms. Jean J. Emery

Mr. & Mrs. Grant Wilkins  
 Mr. & Mrs. Carl M. Williams  
 Mr. Rob Winfrey  
 Alan & Elizabeth Woodard  
 Marian Woods  
 Mr. Otis Wragg

**Donations  
 \$1,000 & above**

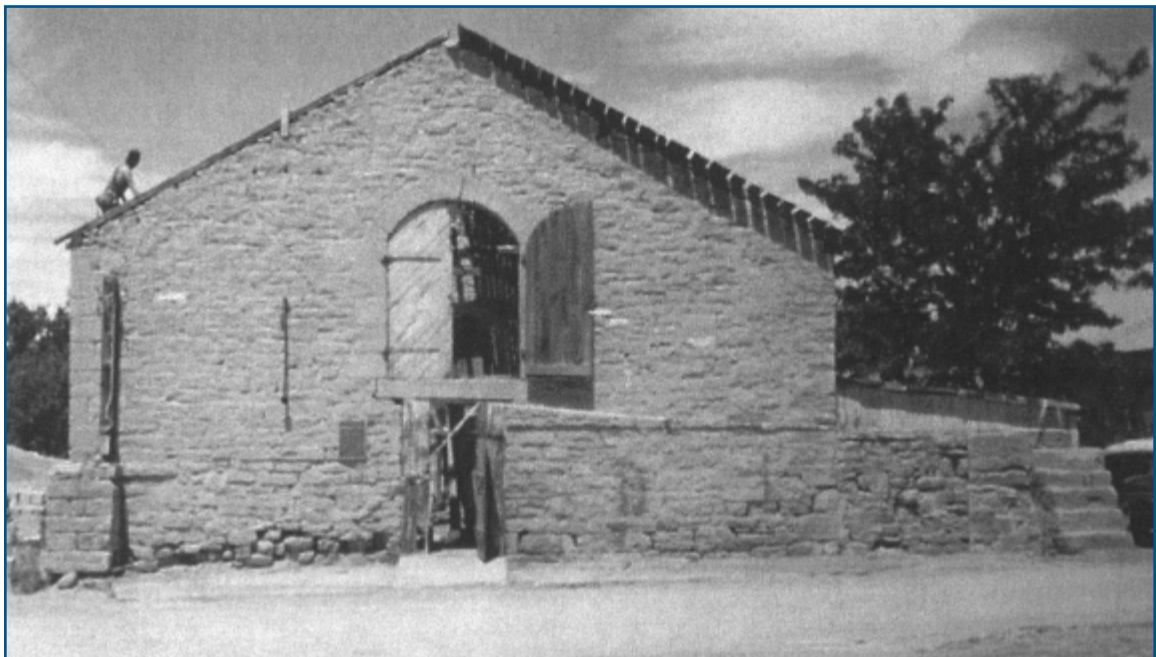
Anschutz Family Foundation  
 Aspen Business Center  
 Foundation  
 Caroline Bancroft Trust  
 Bank One Colorado, N.A.  
 Boettcher Foundation  
 City of Black Hawk & its Casinos  
 Colorado Garden Show, Inc.  
 Colorado Historical Foundation  
 Dr. & Mrs. S. Robert Contiguglia  
 County Lodging Tax Board  
 Costilla County Lodging  
 Tax Board  
 Mrs. Mary Ann G. Davis  
 Mr. & Mrs. Gregory A. Drumm  
 Economic Development  
 Authority  
 Estate of Donald Warner Koch  
 Estate of Phyllis Norsworthy  
 Estate of Elizabeth Reese Sopris  
 John B. Farley Foundation

Harmes C. Fishback  
 Foundation Trust  
 Friends of El Pueblo Museum  
 Friends of Historical Trinidad Inc.  
 G. M. G., Inc.  
 Mr. Charles C. Gates  
 Gates Family Foundation  
 Mr. Hugh Grant/Vance Kirkland  
 Foundation  
 Mr. & Mrs. James R. Hartley  
 LeVert Hoag Foundation  
 Huerfano-Las Animas Area  
 Council of Governments  
 Humphreys Foundation  
 Jeppesen, a Boeing Company  
 Mr. & Mrs. Austin Marquis  
 Ms. Susan H. McCarthy  
 Josephine H. Miles Trust  
 Mr. Melvin Murray  
 Mrs. Mabel W. Musgrave  
 Ms. Ruth M. Robinson  
 Mr. & Mrs. Bruce M. Rockwell  
 Mr. Walter S. Rosenberry III  
 Mrs. Faye G. Schayer  
 Schlessman Family Foundation  
 Schramm Foundation  
 St Mary Land & Exploration  
 Company  
 Ms. Cherie Steinberg Cote  
 Sterne-Elder Memorial Trust  
 Mr. Phillip G. Sterritt

The Thatcher Foundation  
 US Bank  
 Volunteers of the Colorado  
 Historical Society  
 Lloyd David & Carlye Cannon  
 Wattis Foundation  
 Westcliffe Publishers  
 Woodley's Fine Furniture

**Matching Gifts**

AT&T Foundation  
 AXA Foundation  
 BP Amoco Foundation, Inc  
 Charles Schwab Corporation  
 Foundation  
 Chevron U.S.A., Inc.  
 CIGNA Foundation  
 Exxon Mobil Foundation, Inc.  
 Hunter Douglas Inc.  
 IBM International Foundation  
 Lucent Technologies Foundation  
 Newmont Mining Corporation  
 Rose Community Foundation  
 The Times Mirror Foundation  
 United Technologies  
 US Bancorp Foundation  
 Wal-Mart  
 XcelEnergy Foundation



*The State Historical Fund gave the City of Pueblo a grant to assist in acquisition of the Goodnight Barn.*



*Civil War re-enactors at Fort Garland.*



*Panning for gold at a Family Free Day at the Colorado History Museum.*

## Credits

### **Annual Report design:**

State of Colorado's Integrated Document Factory Design

All images from Colorado Historical Society collections  
unless otherwise noted





Colorado Historical Society

1300 Broadway  
Denver, CO 80203

303/866-3682 [www.coloradohistory.org](http://www.coloradohistory.org)