



Colors. Coatings. Surfaces. Solutions.

PPG IdeaScapes® Integrated products, people and services
to inspire your design and color vision.





Where can you find the sustainable glass, coatings and paint choices you want, together with the unrivaled technical tools, support and expertise of one of the world's most experienced and innovative building product manufacturers?

The answer is **PPG IdeaScapes®**. Look around and you'll discover that **PPG IdeaScapes** stands alone in its ability to fulfill your sustainable architectural and design vision. Through every phase of a building's life-cycle—from design and construction to operations and renewal—PPG offers beautiful, durable and environmentally progressive solutions for every surface.

PPG IdeaScapes also is your color conductor. We're unsurpassed in our ability to provide coordinated color palettes—integrating architectural glass, exterior coatings and interior finishes—for almost any surface imaginable, from wood, stone, steel and aluminum to drywall, concrete and more.

Our devotion to **Color Across Surfaces** centers not just on how color looks, but also how it performs and protects architectural components as well as non-building-related products in the automotive, aerospace, appliance and consumer electronics industries. In short, no one knows more about color—and how to select it, match it and apply it—than PPG.

PPG IdeaScapes has a personal side, too; knowledgeable personnel with the experience and training to address all your sustainable building and design needs, backed by an exceptional array of tools, product selectors and online resources.

When you want architectural products with a track record of proven performance, sustainability, color consistency and good looks, there's only one place to turn: **PPG IdeaScapes**.



Ecological Solutions from PPG™

Sustainable architecture has forever altered the way the buildings are programmed, specified, designed and constructed. While architects continue to lead the revolution, PPG works to anticipate and meet their demand for products that not only protect and beautify buildings, but also save energy, reduce waste and otherwise harmonize with the environment.

The PPG commitment to these principles is embodied in **Ecological Solutions from PPG**, a growing collection of environmentally progressive products that support architects in their efforts to practice sustainable architecture and design. These products, which are detailed in the pages that follow, include:

- Low-odor, zero-VOC premium latex interior paints that resist abrasion and repeated washings, and promote healthy indoor air quality for trade workers during construction and for building residents afterward
- Reflective coatings that reduce the heat island effect associated with metal roofs, yet are durable enough to reduce or eliminate the need for repeated application
- Low-e and spectrally selective glasses that transmit abundant daylight while blocking the sun's heat energy, flooding interior spaces with natural light and reducing the need for energy-consuming artificial lighting and cooling.

This commitment to the environment extends beyond the building industry to encompass PPG products that touch almost every facet of life, from what we eat, drink and read to how we travel. For instance, PPG makes:

- Fuel-saving lightweight fiberglass composites for aircraft and automobile components
- Fiberglass to manufacture turbine blades for renewable energy and the wind power market
- Chlorination products that increase the world's supply of drinking water
- Ultra-clear glass for photovoltaic cells that make solar energy collection less expensive and more efficient
- Organic inks for decorating glass bottles and containers.

At PPG, we're committed to more than making environmentally progressive products. We actively pursue initiatives across all industries aimed at reducing the environmental impact of our packaging, making our products easier to recycle or dispose of, encouraging the use of alternative energy, and cutting overall greenhouse gas and VOC emissions.

We understand that active environmental stewardship is one of a firm's greatest responsibilities, and we are pleased and honored to play a significant part in the architectural industry's ongoing commitment to global sustainability.



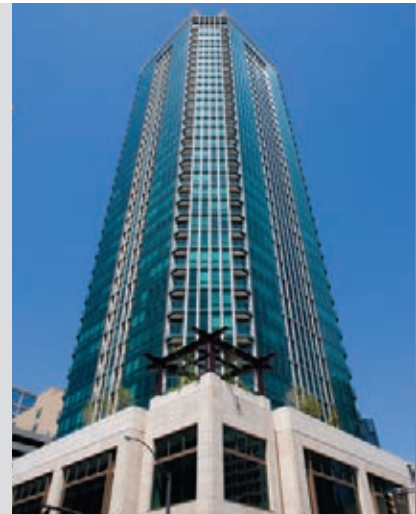
Architectural Glass

Inspired by Nature. Engineered for the Environment.

Unparalleled solar control performance, ultra-clear transparency and an incomparable array of ocean- and earth-inspired tints. Architects can find them all with PPG Architectural Glass, backed by the responsive service, trust and experience of an international network of highly skilled glass fabricators.

Whether specified alone or in combination, these PPG glass products offer architects an unmatched balance of performance and aesthetics:

- The **Solarban**® family of solar control, low-e glasses is highlighted by the aesthetic range of **Solarban** z50 and **Solarban** R100 glasses, while **Solarban** 70XL glass, a revolutionary clear glass, offers an unprecedented combination of visible light transmittance and solar heat control. Together with the proven industry trailblazer **Solarban** 60 glass, this collection of MSVD soft-coat, high-performance glasses sets the standard for environmentally progressive products that save energy, and lend beauty and sophistication to any structure.
- The **Oceans of Color**® collection of nautically inspired, tinted glasses have light to solar gain (LSG) ratios of up to 1.56 in five popular nautically inspired tints: **Atlantica**®, **Azuria**®, **Pacifica**® and **Solexia**® glasses. Ranging from subtle light-green to a brilliant aqua-blue, these tints can be combined with **Solarban** 70XL glass for even greater LSG ratios of up to 1.75.
- **Starphire**® Ultra-Clear glass offers the ultimate in brilliant transparency for vision glass, atriums, storefronts and entryways. Manufactured with a proprietary low-iron formulation, **Starphire** glass is available in standard and extra-heavy thicknesses of 15 and 19 millimeters. Combining **Starphire** glass with **Solarban** 60 glass in a standard insulating glass unit delivers the best of both worlds: crystal clarity and energy-saving solar control performance.
- The **Vistacool**® collection of subtly reflective, color-enriched glasses expands the architectural palette by offering architects a vivid array of tints that provide exceptional levels of visible light transmittance and glare control.
- **Solarcool**® reflective glasses, which feature a more traditional reflective aesthetic, are available to add a dimension of sparkle and brilliance to the entire range of ocean- and earth-inspired tints available from PPG.
- With more than 200 million square feet installed in the last decade, **Sungate**® low-e glass has a clear history of proven energy-saving performance. **Sungate** 400 glass is especially well-suited to colder climates where the ability to trap the sun's winter heat energy is desired.



PPG Certified Fabricator® Network

PPG Architectural Glass is available through a network of rigorously audited Certified Fabricators. These select companies offer premium services and capabilities that include exclusive access to high-performance PPG glasses, accelerated lead times for tight construction deadlines, quick-response emergency replacement glass and regional sourcing from more than 50 locations throughout the U.S. and Canada.

Thanks to the popularity and success of the **PPG Certified Fabricator Network** (PPG/CFP), PPG has expanded the concept to include the **PPG Certified Commercial Window Fabricator™** (PPG/CCWF).



Metal coatings

Protection and Beauty

It's said that beauty is fleeting. Not so for buildings and structures protected by coatings from PPG, which offers the industry's most expansive line of industrial and high-performance coatings.

Coil and Extrusion Coatings

- **DURANAR**® high-performance coil and extrusion coatings have met the industry's toughest performance specifications, including AAMA 2605, thanks to formulations that feature 30% proprietary PPG resin and 100% proprietary pigment technology.
- **DURANAR** SPF multi-coat IR reflective coating systems comply with **ENERGY STAR**® solar reflectance limits for steep-slope or low-slope roofing products, while delivering outstanding aesthetics, durability and long-term IR reflectivity.
- **CORAFLO**N® coatings are second-generation fluoropolymer coatings, available in a versatile palette of bright colors and in a full gloss range from 20% to 80%.
- **CORAFLO**N and **ENVIROCRON**® architectural powder coatings for aluminum extrusions are designed to meet AAMA 2603, 2604 and 2605 specifications. These environmentally friendly coatings offer superior hardness for high-traffic areas.
- **DURASTAR**® polyester coil coatings meet the demanding exterior durability requirements of agricultural, industrial and pre-engineered buildings. They deliver an excellent balance of exterior color and gloss retention, good chalk resistance, forming flexibility, and overall cost effectiveness.
- **CORAFLO**N ADS coatings are a revolutionary line of colorful, field-applied fluoropolymer coatings that provide architects a beautifully effective and affordable option for revitalizing worn building panels, standing seam roofs and accents.

Other proven factory-applied coatings include **ACRYNAR**® ultra-durable fluoropolymer coatings for high-traffic areas; **DURACRON**® acrylics for awnings, canopies, metal building products and residential or interior applications such as window and door frames, railings and trim; **POLYCRON**® high-solids polyester coatings for interior, residential, institutional and light commercial applications; **TRUFORM**® SP silicone polyester coil coatings for agricultural, industrial and pre-engineered building applications; and **ENVIRON**® and **ENVIRON**® ST waterborne coil coatings for a wide range of building component applications.





PPG Certified Applicator™ Program

The **PPG Certified Applicator Program** (PPG/CAP) is a select nationwide network of exceptional coating applicators whose facilities and quality control processes are rigorously audited by PPG to deliver the highest possible levels of product quality, customer service and technical expertise.

PPG Certified Applicators also are electronically integrated into the company's **Kaleidoscope™** Color Management System, which incorporates a uniform color calibration system and the mandated use of PPG-designated software and equipment.

PPG/CAP members provide a heightened level of customer service, highlighted by benefits such as priority service on color samples, preferred access to proprietary PPG coatings, regional sourcing, major project assistance and accelerated delivery schedules.



Paint & Protective coatings

Building on a long heritage of color, quality and performance, **PPG Pittsburgh® Paints** and Protective & Marine Coatings offer a comprehensive selection of primers and finishes that meet the performance demands of architects, specifiers, facility managers, owners and contractors nationwide. From super-premium paints — including low-VOC **Manor Hall® Timeless** and commercial workhorse **Speedhide®** — to exceptional urethane coatings **Pitthane®** and **Durethane®** and patented **PSX** technologies, you can be confident of PPG technology and color in every can.

PPG Porter® Paints is a well-respected brand in the central and southern regions of the United States as a time-honored leader in the paint industry.

PPG Pure Performance® paint was the first nationally distributed paint to receive the coveted Class A certification from Green Seal®. This designation means **PPG Pure Performance** paint meets rigorous tolerances for limiting VOC emissions, as well as the high standards for durability, adhesion, coverage and hiding demanded by professional painters.

The PPG **Perma-Crete®** masonry product line provides architects with a multitude of options when specifying masonry projects. The **Perma-Crete** High Build Masonry System, as well as Elastomeric Coatings, Texture Finishes and Stains and Patching Compounds, work together to meet a variety of substrate and substrate condition demands.

Pitthane Ultra and **Durethane DTM** are VOC-compliant urethane coatings. Available in a wide range of colors, these direct-to-metal products are designed to protect steel from the elements. They also have excellent color and gloss retention, and are two of the few products in this class that meet the stringent SSPC SP-36 standards for weatherability.

PSX High Performance Siloxane Protective Coatings provide the color and gloss retention of a urethane system and the corrosion and chemical resistance of an epoxy in one complete system. Highly resistant to stains, graffiti and dirt accumulation, **PSX** requires less frequent repainting due to greatly extended service life.

Megaseal® Flooring Solutions offer durable, seamless hygienic flooring systems for commercial and industrial applications. As the only patented self-leveling epoxy flooring that can be custom-tinted to virtually any color, **Megaseal** color technology opens an array of design opportunities. In addition, **Megaseal** Anti-Slip Systems provide safety for industry and high-traffic areas. The **Megaseal** Resurfacing System is ideal for refurbishing concrete floors in extreme environments.





One Click or Call can Do It All

PPG has been a leading innovator in architectural glass, coatings and paint for more than a century. That experience is evident in the knowledge and technical expertise of our people, whether they're architectural managers consulting with architects in the field, or scientists and engineers testing new products in one of our many research and development facilities.

PPG IdeaScapes puts that experience and expertise to work for you. If you have a project or a problem that demands our input at any phase of the specification, design or construction process, simply give us a call. You're also invited to visit www.ppgideascales.com to access our easy-to-use library of product and performance information. At **PPG IdeaScapes**, our job is to make your job easier.

© 2014 PPG Industries, Inc. All rights reserved. *Durethane, Manor Hall, Megaseal, Pitt-Char, Pitthane, Perma-Crete, PSX, PPG Porter Paints, Speedhide, PPG Pure Performance* and *PPG Pittsburgh Paints* are registered trademarks of PPG Architectural Finishes, Inc. *Firetex* is a trademark of W&J Leigh & Co. *Acrynar, Atlantica, Azuria, Corafon, Duranar, Duracron, Envirocron, Environ, IdeaScapes, Kaleidoscope, Oceans of Color, Polycron, Solarban, Solarcool, Solexia, Starphire, Sungate, Truform, Vistacool*, PPG Certified Applicator, PPG Certified Fabricator, PPG Certified Commercial Window Fabricator, Ecological Solutions from PPG, PPG and the PPG logo are trademarks of PPG Industries Ohio, Inc.

ENERGY STAR and the ENERGY STAR mark are registered U.S. marks. ENERGY STAR is a registered mark owned by the U.S. government.

