

ATLAS COLUMN FORMS



AL-SPEED®



MULTI-CHANNEL

ATLAS OFFERS AL-SPEED® ALUMINUM AND ATLAS MULTI-CHANNEL HIGH STRENGTH, ADJUSTABLE STEEL COLUMN FORM SYSTEMS. BOTH SYSTEMS OFFER THE ADVANTAGES OF PRODUCING AN ARCHITECTURAL FINISH AND BEING AVAILABLE ON A RENTAL BASIS. FORM SKINS ARE GENERALLY 3/4" HDO OR FINPLY.

ATLAS AL-SPEED® ALUMINUM COLUMN FORMS ARE CAPABLE OF UP TO 36" WIDTHS AND GENERALLY UTILIZED TO A HEIGHT UP TO 16 FT. THEY ARE PROVIDED WITH QUICK DOUBLE CLOSURES (TWO PIECE) OR HINGED/SINGLE CLOSURES (ONE PIECE).

ATLAS MULTI-CHANNEL FORMS ARE CAPABLE OF UP TO 72" WIDTHS AND HAVE BEEN USED TO HEIGHTS UP TO 45 FT. THEY ARE PROVIDED WITH QUICK SWIVEL BARREL ASSEMBLY DOUBLE CLOSURES. ATLAS CAN OFFER EITHER OF THESE FORMS PRE-ASSEMBLED AND DELIVERED TO THE JOBSITE READY TO USE.



AL-SPEED[®] ALUMINUM CLAMPS FOR COLUMN AND BEAM FORMING

THE AL-SPEED[®] ALUMINUM CLAMP SYSTEM WAS DESIGNED AND DEVELOPED FOR MAXIMUM UTILITY IN CONCRETE COLUMN AND BEAM FORMING APPLICATIONS.

THE CLAMP MATERIAL IS A HIGH STRENGTH STRUCTURAL ALUMINUM ALLOY EXTRUSION. THE CLAMP CROSS SECTION IS RECTANGULAR AND MEASURES 1-1/2" X 3-1/2" (SAME AS A 2X4) WITH A 1" WIDE INTEGRAL FLANGE ON ONE SIDE. THE FLANGE HAS 5/16" DIAMETER HOLES @ 1-1/4" O.C. THROUGHOUT ITS LENGTH. THESE HOLES ARE FOR NAILING OR LAGGING (1/4" DIAMETER LAG BOLTS) THE CLAMP TO FORM SUPPORT MEMBERS. THE BODY OF THE CLAMP HAS 1-1/16" DIAMETER HOLES @ 2" O.C. TO ACCOMMODATE COLUMN SIZES FROM 12" X 12" UP TO 36" X 36", AND 36" DEEP BEAMS FROM 10" WIDE UP TO 24" WIDE.

STANDARD CLAMP SIZES:

- AL-SPEED[®] 33 CLAMP FOR COLUMNS FROM 14" X 14" UP TO 24" X 24", AND 36" DEEP BEAMS FROM 10" UP TO 24" WIDE.
- AL-SPEED[®] 48 CLAMP FOR COLUMNS FROM 20" X 20" UP TO 40" X 40".

CLAMP WEIGHT:

AL-SPEED[®] 33 CLAMP WEIGHT = 11.5 LBS.

AL-SPEED[®] 48 CLAMP WEIGHT = 16.5 LBS.

CLAMP ASSEMBLY TYPES:

- I. DOUBLE CLOSURE - CLOSURE ASSEMBLY ON BOTH OPPOSING CORNERS
- II. HINGED - CLOSURE ASSEMBLY ON ONE CORNER; HINGE ON OPPOSITE CORNER
- III. EXTENDED HINGED - CLOSURE ASSEMBLY AND HINGE FOR CRANE SET FORMING



AL-SPEED[®] COLUMN FORM PHOTOGRAPHS



DOUBLE CLOSURE:

2 EACH

2 EACH

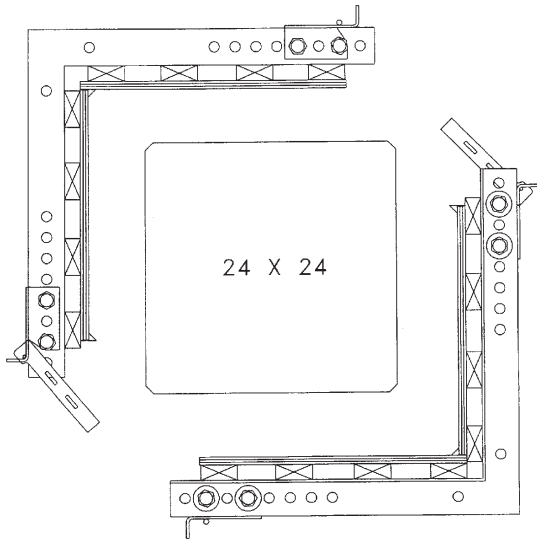
8 EACH

CLOSURE ASSEMBLY ON BOTH OPPOSING CORNERS

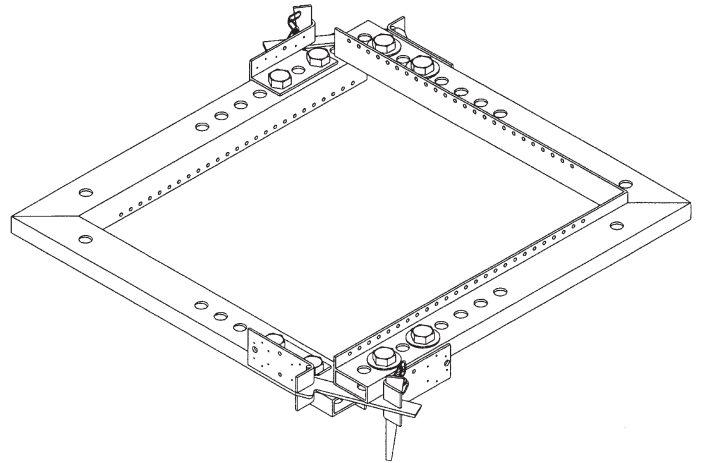
AL-SPEED® CLAMPS (33 OR 48)

AL-SPEED® COLUMN CLOSURE ASSEMBLIES

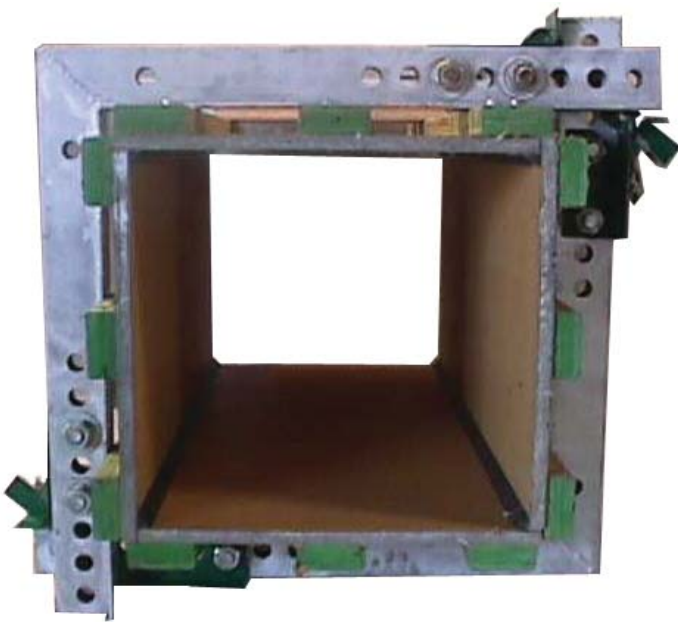
1" X 3" M-BOLTS WITH HEX NUT & WASHERS



DOUBLE CLOSURE ASSEMBLY



DOUBLE CLOSURE ASSEMBLY

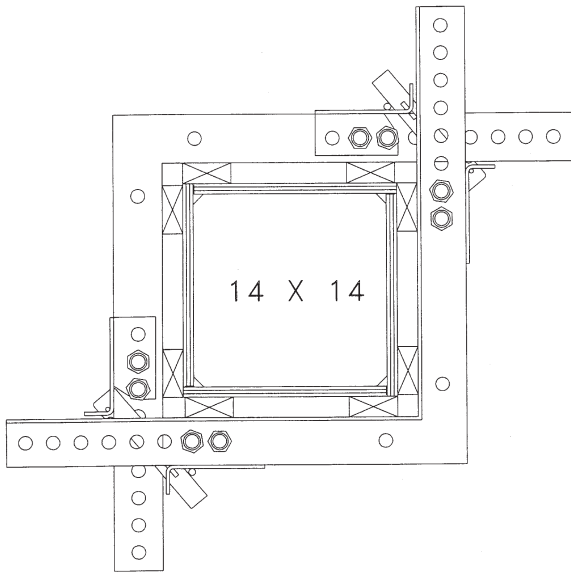


AL-SPEED® COLUMN FORM

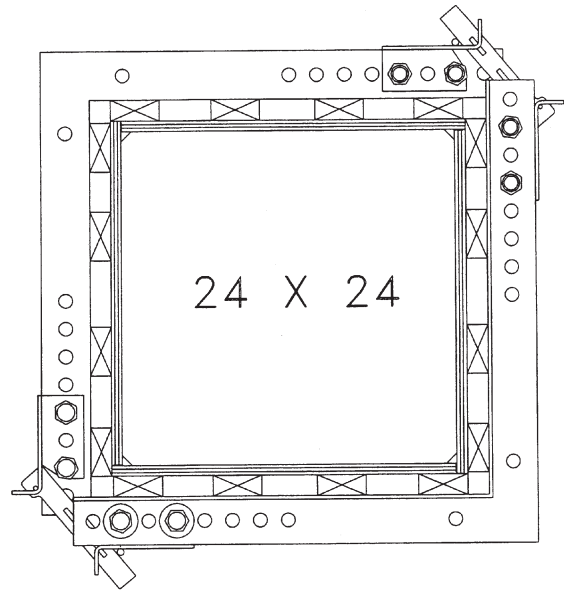


AL-SPEED® COLUMN FORM

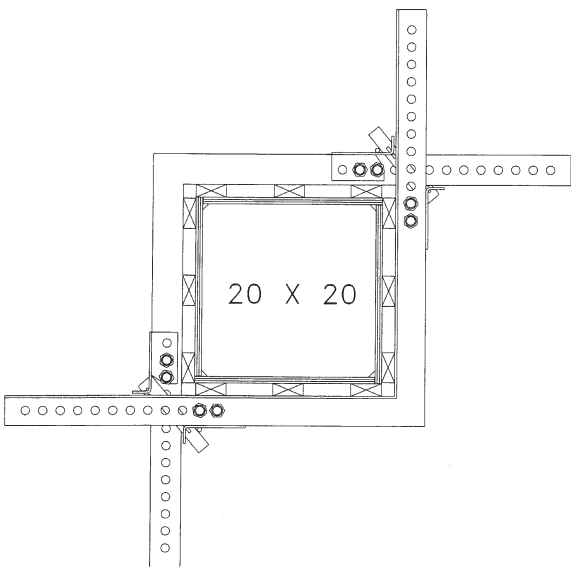
DOUBLE CLOSURE



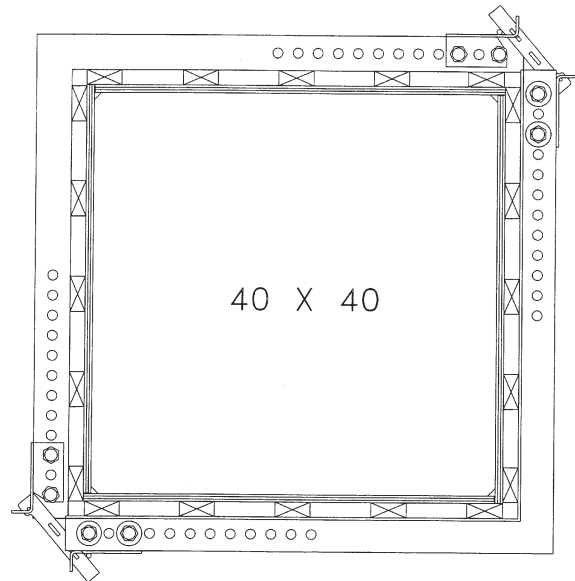
**MINIMUM SIZE
DOUBLE-CLOSURE COLUMN FORM
USING AL-SPEED® 33 CLAMPS
AND 2X4 FLAT**



**MAXIMUM SIZE
DOUBLE-CLOSURE COLUMN FORM
USING AL-SPEED® 33 CLAMPS
AND 2X4 FLAT**



**MINIMUM SIZE
DOUBLE-CLOSURE COLUMN FORM
USING AL-SPEED® 48 CLAMPS
AND 2X4 FLAT**



**MAXIMUM SIZE
DOUBLE-CLOSURE COLUMN FORM
USING AL-SPEED® 48 CLAMPS
AND 2X4 FLAT**

HINGED:

CLOSURE ASSEMBLY AND HINGE FOR CRANE SET FORMING

2 EACH

AL-SPEED CLAMPS (33 OR 48)

1 EACH

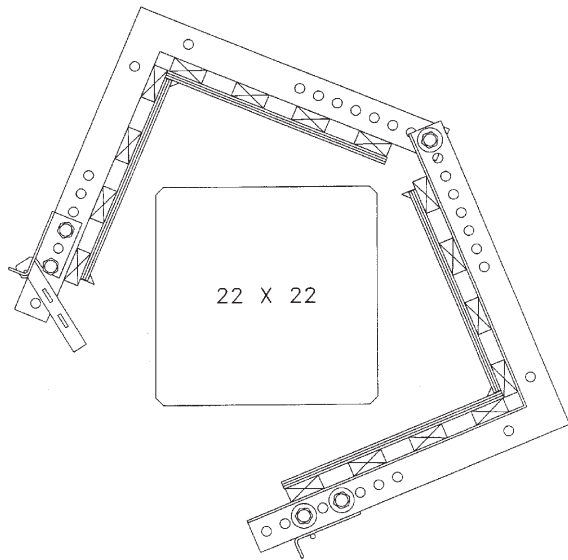
AL-SPEED COLUMN CLOSURE ASSEMBLY

1 EACH

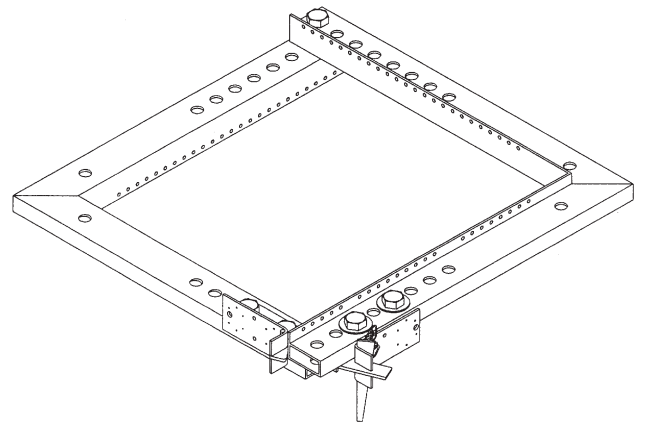
1" X 4 1/2" HINGE M-BOLTS WITH HEX NUT & WASHERS

4 EACH

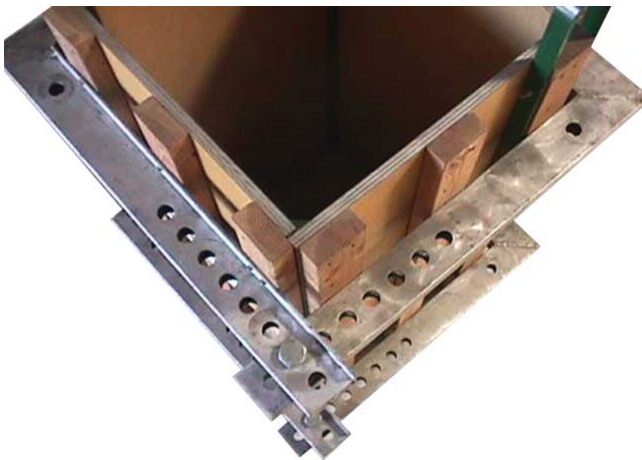
1" X 3" M-BOLTS WITH HEX NUT & WASHERS



HINGED COLUMN FORM



AL-SPEED® COLUMN CLAMP: HINGED



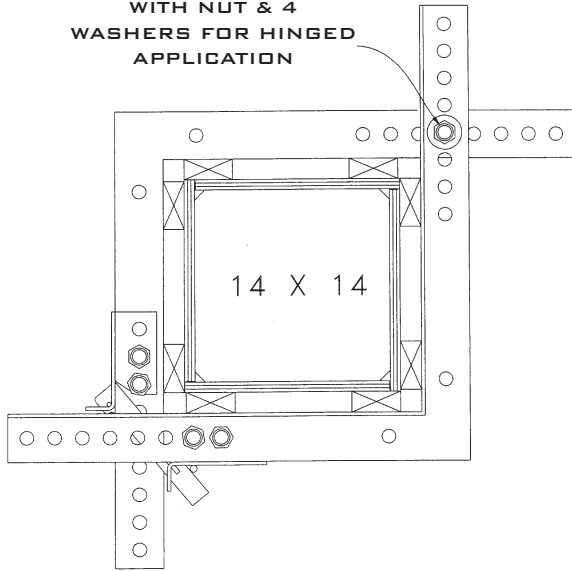
AL-SPEED® COLUMN CLAMP: HINGED



AL-SPEED® COLUMN CLAMP: HINGED

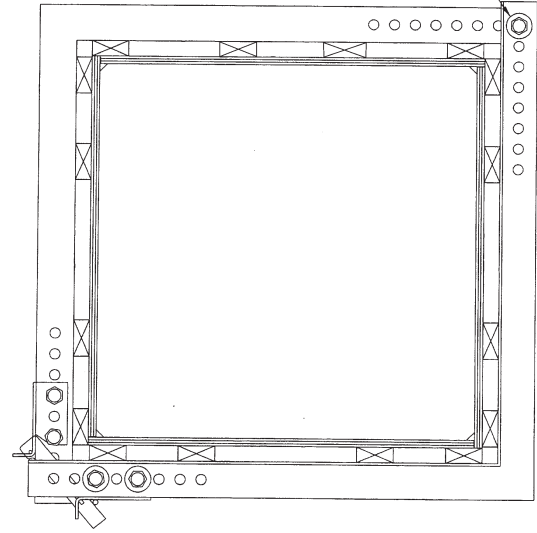
HINGED

1" X 4-1/2" M-BOLT
WITH NUT & 4
WASHERS FOR HINGED
APPLICATION



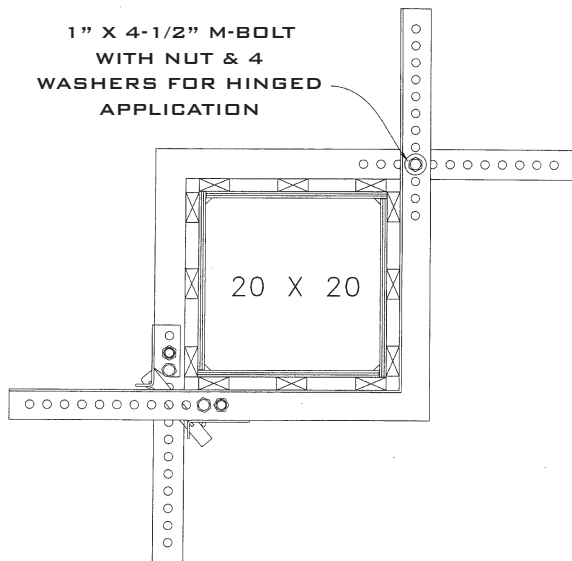
MINIMUM SIZE HINGED
COLUMN FORM USING
AL-SPEED® 33 CLAMPS
AND 2X4 FLAT

1" X 4-1/2" M-BOLT
WITH NUT & 4
WASHERS FOR
HINGED APPLICATION



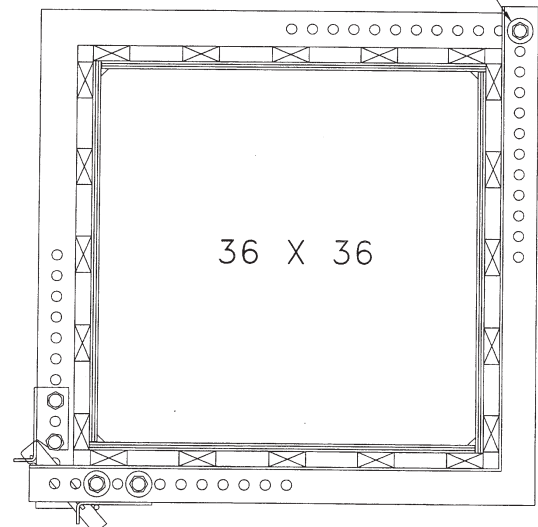
MAXIMUM SIZE HINGED
COLUMN FORM USING
AL-SPEED® 33 CLAMPS
AND 2X4 FLAT

1" X 4-1/2" M-BOLT
WITH NUT & 4
WASHERS FOR HINGED
APPLICATION



MINIMUM SIZE HINGED
COLUMN FORM USING
AL-SPEED® 48 CLAMPS
AND 2X4 FLAT

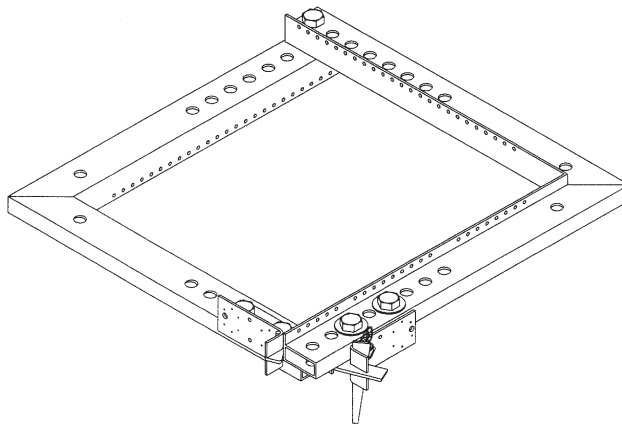
1" X 4-1/2" M-BOLT
WITH NUT & 4
WASHERS FOR
HINGED APPLICATION



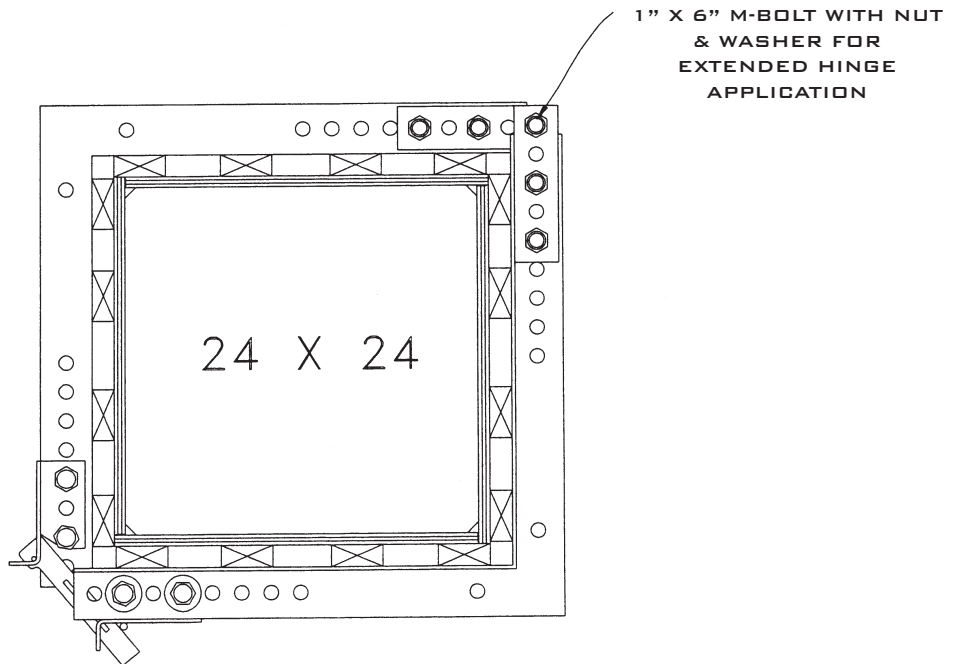
MAXIMUM SIZE HINGED
COLUMN FORM USING
AL-SPEED® 48 CLAMPS
AND 2X4 FLAT

EXTENDED HINGED: CLOSURE ASSEMBLY AND HINGE FOR CRANE SET FORMING

- 2 EACH AL-SPEED CLAMPS (33 OR 48)
- 1 EACH AL-SPEED COLUMN CLOSURE ASSEMBLY
- 1 EACH 1" X 6" HINGE M-BOLTS WITH HEX NUT & WASHERS
- 4 EACH EXTENDED HINGE PLATES
- 4 EACH 1" X 3" M-BOLTS WITH HEX NUT & WASHERS
- 4 EACH 1" X 4-1/2" M-BOLST WITH HEX NUTS



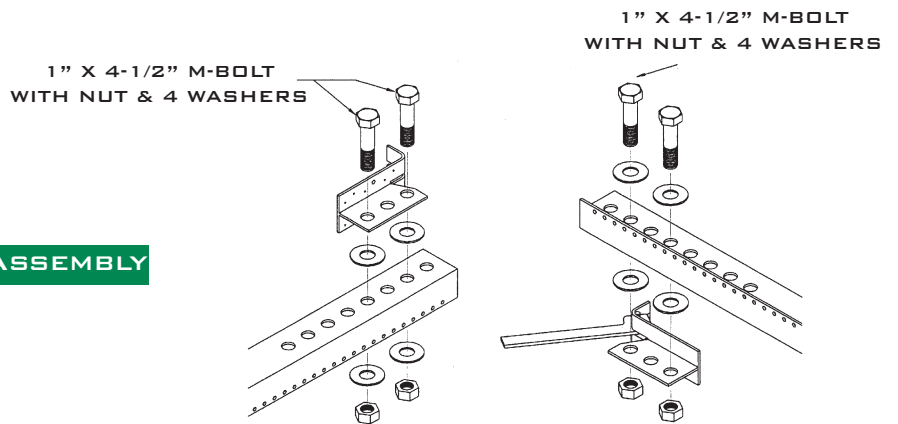
**AL-SPEED® COLUMN CLAMP:
EXTENDED HINGED**



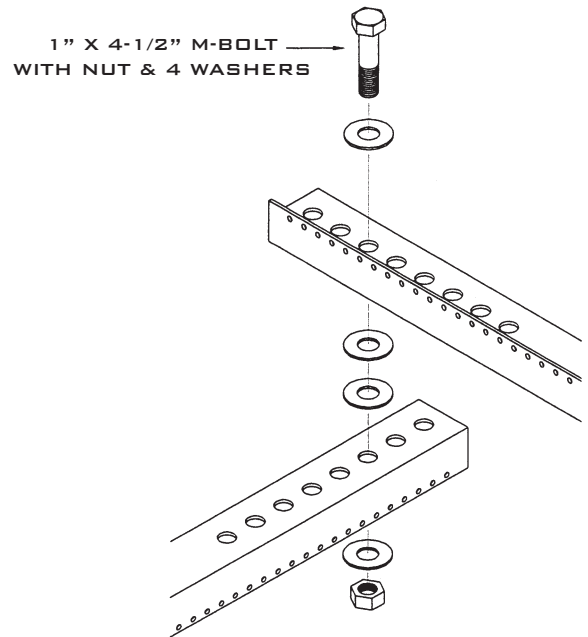
**AL-SPEED® COLUMN CLAMP:
EXTENDED HINGED**

ASSEMBLIES

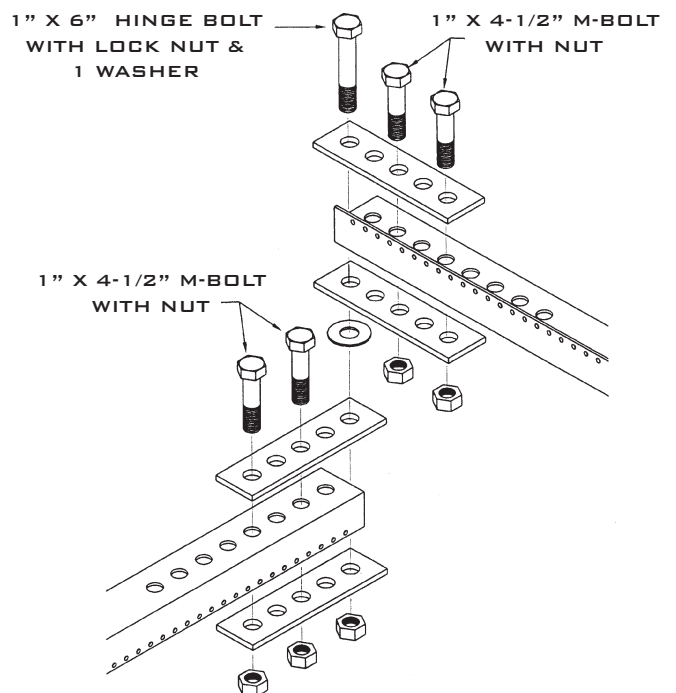
CORNER LOCK ASSEMBLY



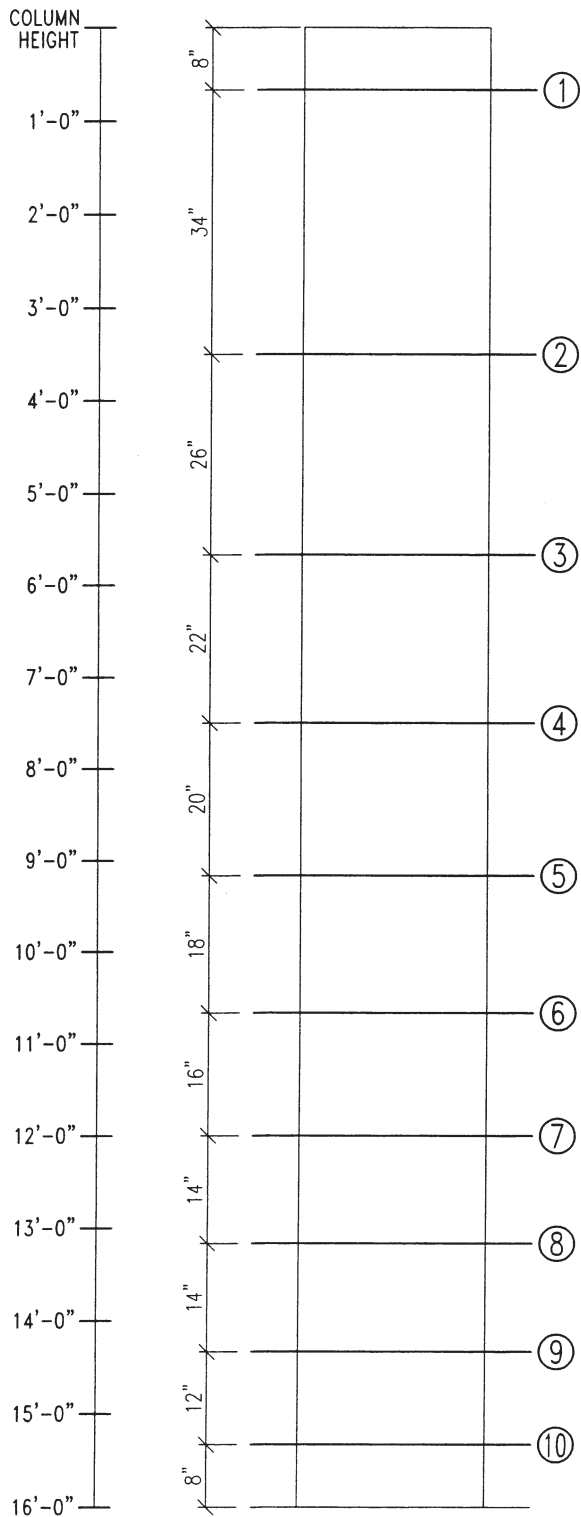
HINGED ASSEMBLY FOR GANG-SET APPLICATION



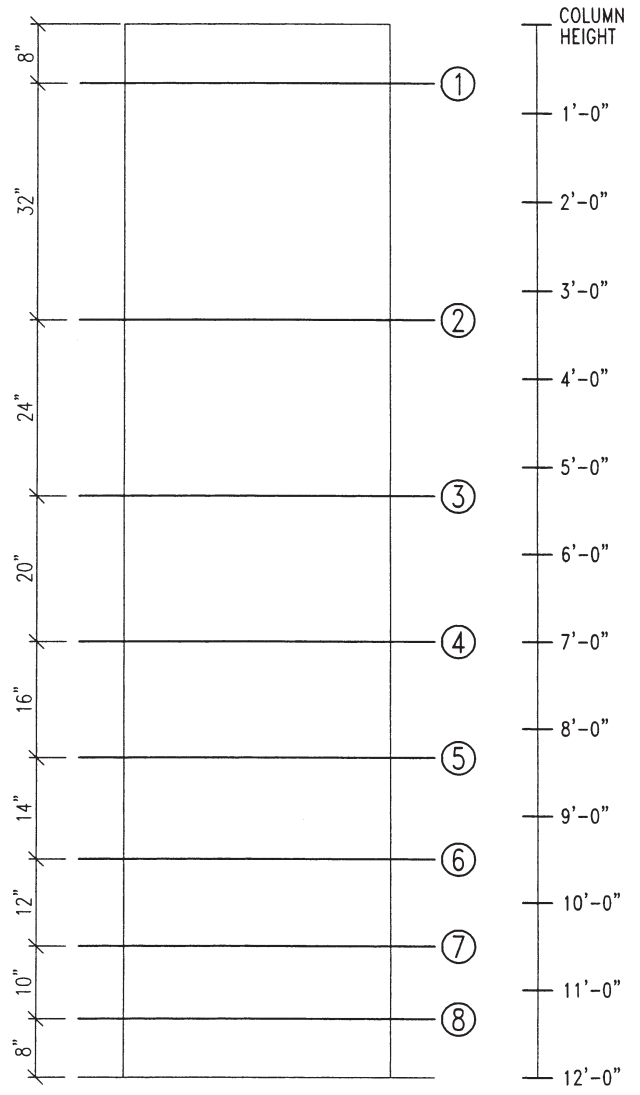
HINGED ASSEMBLY FOR GANG-SET APPLICATION EXTENDED HINGED



AL-SPEED® COLUMN CLAMP SIZE & SPACING CHART



24" x 24"
(AL-SPEED® CLAMP 33)
(AL-SPEED® CLAMP 48)



36" x 36"
(AL-SPEED® CLAMP 48)

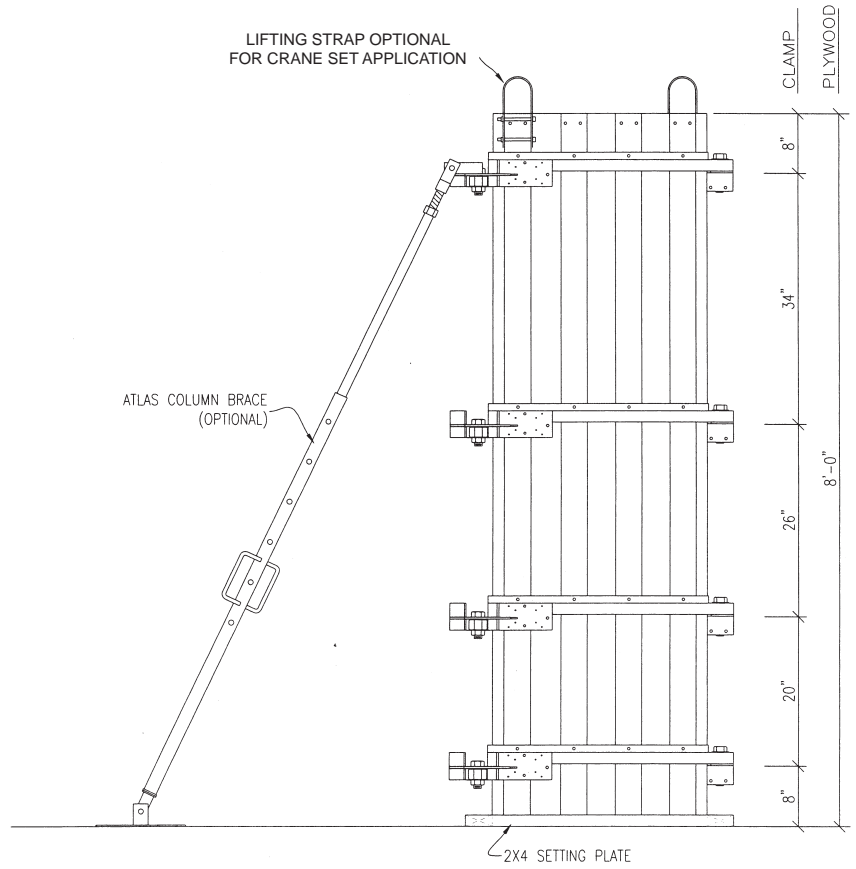
CHART BASED ON MAX. 2400 PSF CONCRETE PRESSURE
 CLAMPS DESIGNED TO SUPPORT 3/4" B-B CLASS 1 PLYWOOD OR BETTER WITH BACK-UP OF CONSTRUCTION GRADE 2X4 ON-FLAT

MAX. ALLOWABLE BENDING MOMENT IN CLAMP = 2500 LB-FT
 MAX. ALLOWABLE RESULTANT CLOSURE LOAD = 3500 LBS. TENSION

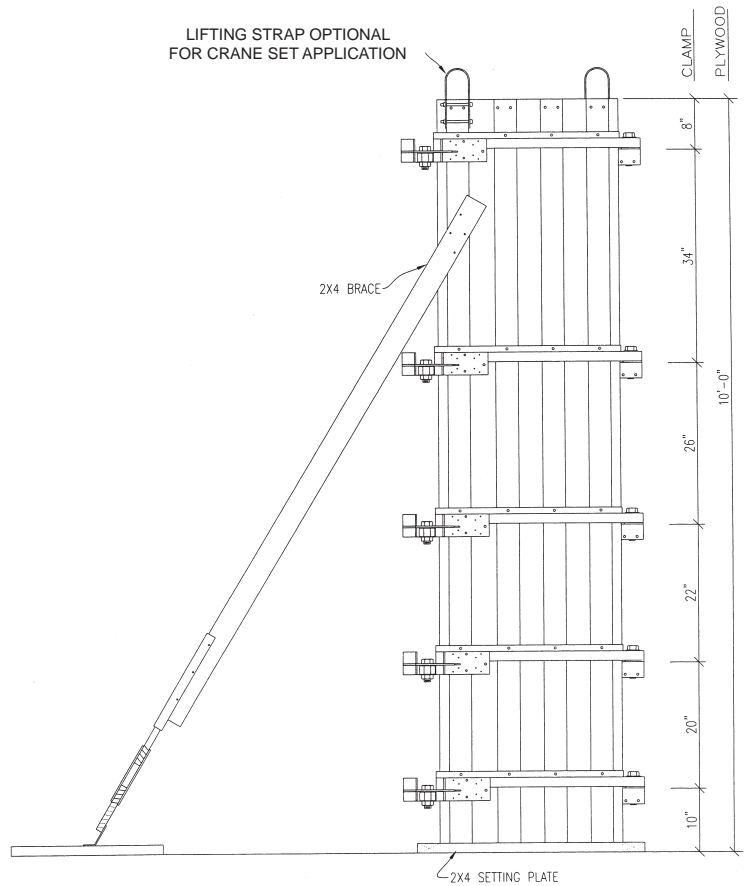
	Hinged/Extended Hinged 2 x 4 Flat	Double Closure 2 x 4 Flat
ASC 33 MINIMUM	14" x 14"	14" x 14"
ASC 33 MAXIMUM	24" x 24"	24" x 24"
ASC 48 MINIMUM	20" x 20"	20" x 20"
ASC 48 MAXIMUM	40" x 40"	40" x 40"

COLUMN FORM ELEVATIONS

8 FT COLUMN FORM ELEVATION (FULL LIQUID HEAD)



10 FT COLUMN FORM ELEVATION (FULL LIQUID HEAD)



AL-SPEED® COLUMN FORM PHOTOGRAPHS



AL-SPEED® COLUMN FORM PHOTOGRAPHS



MULTI-CHANNEL STEEL CLAMPS FOR COLUMN AND BEAM FORMING

THE MULTI-CHANNEL CLAMP SYSTEM WAS DESIGNED AND DEVELOPED FOR LARGER AND TALLER CONCRETE COLUMN AND BEAM FORMING APPLICATIONS THAN THE AL-SPEED® CLAMP SYSTEM.

THE CLAMP MATERIAL IS 4" TO 6" STEEL CHANNEL PAIRS AND HARDWARE. THE BODY OF THE CLAMP HAS 1-1/16" DIAMETER HOLES @ 2" O.C. TO ACCOMMODATE COLUMN SIZES FROM 12" UP TO 72" WIDE AND UP TO 45' TALL. THE CLAMP ELEMENTS ACCOMMODATE BEAMS WITH WIDTHS AND DEPTHS TO 48".

CLAMP ASSEMBLY TYPES:

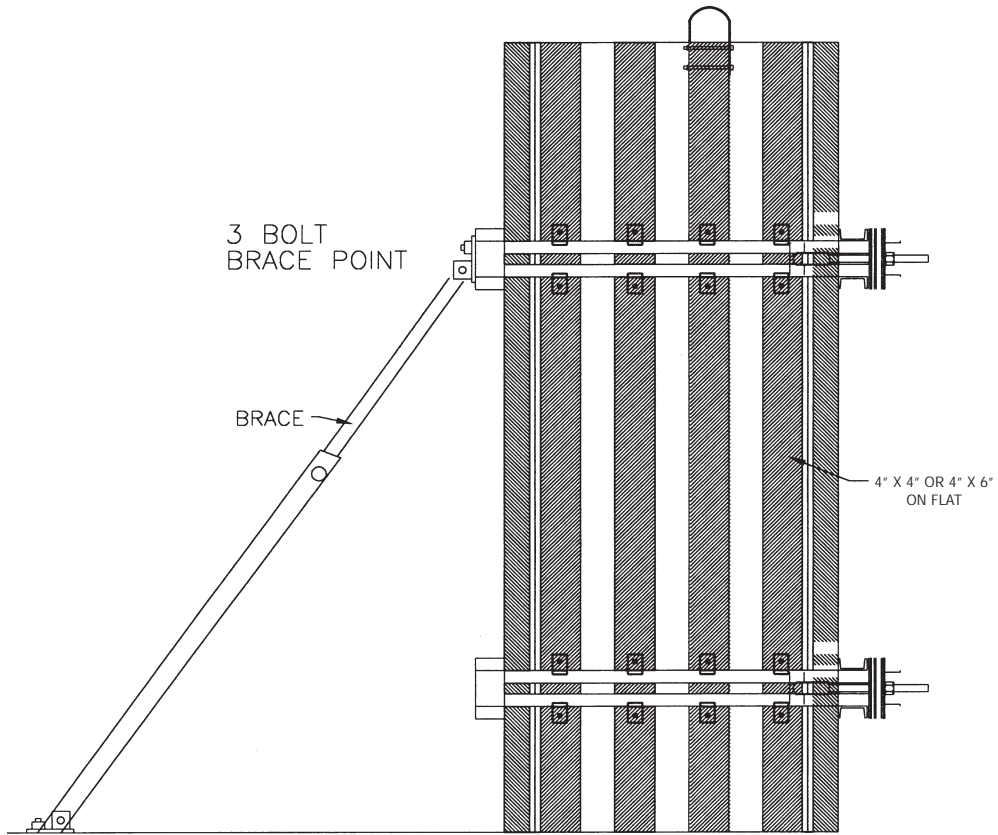
- I. DOUBLE CLOSURE - CLOSURE ASSEMBLY ON BOTH OPPOSING CORNERS
- II. HINGED - CLOSURE ASSEMBLY ON ONE CORNER; HINGE ON OPPOSITE CORNER



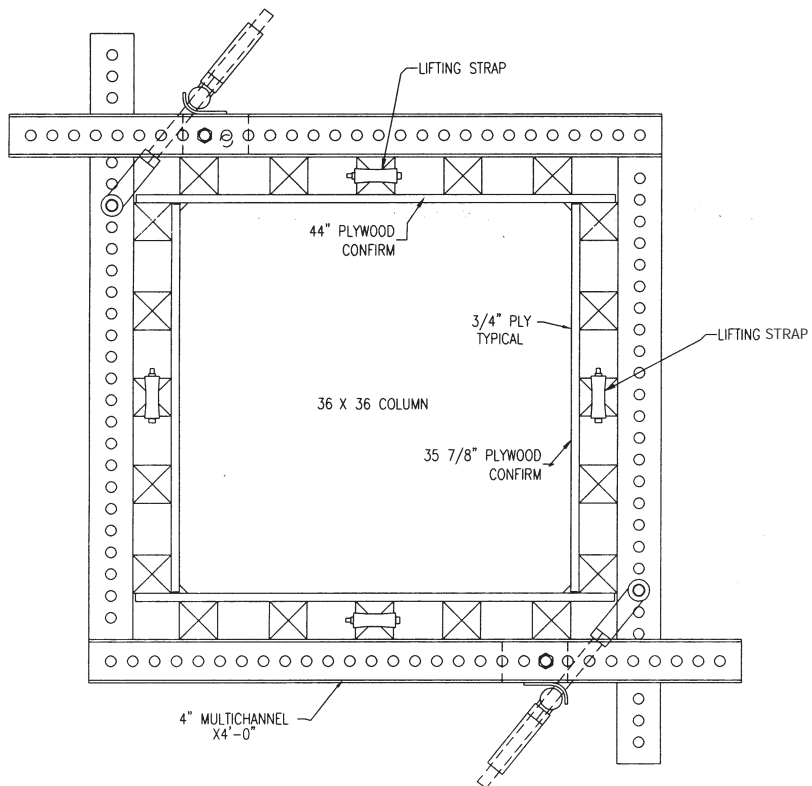
MULTI-CHANNEL PHOTOGRAPHS



MULTI-CHANNEL DIAGRAMS

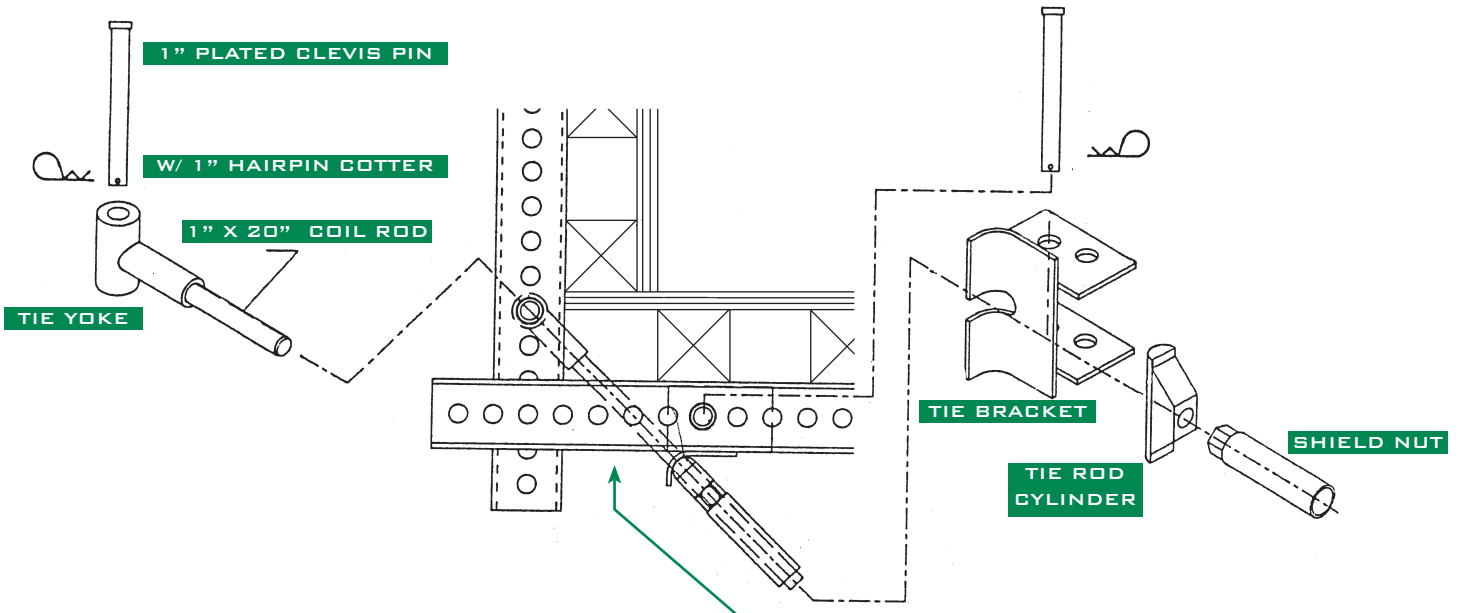


ELEVATION 36" X 36" COLUMN

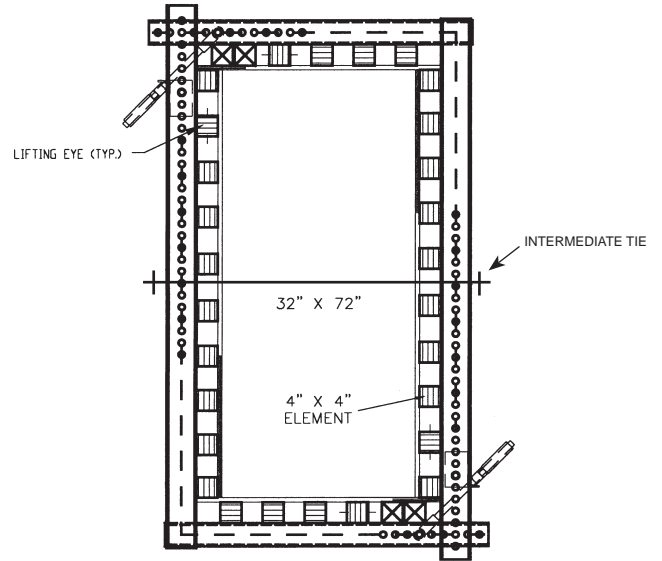
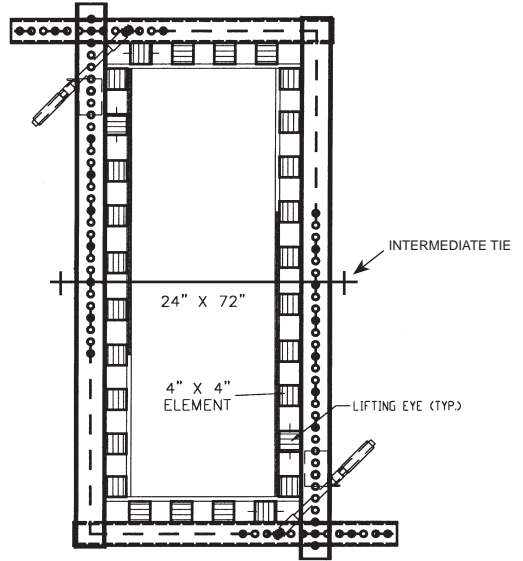
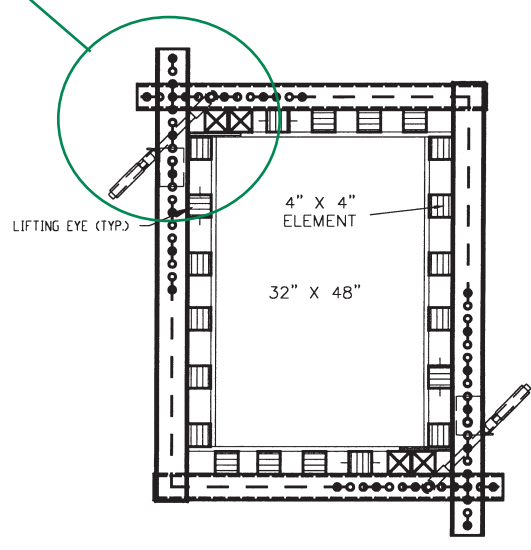
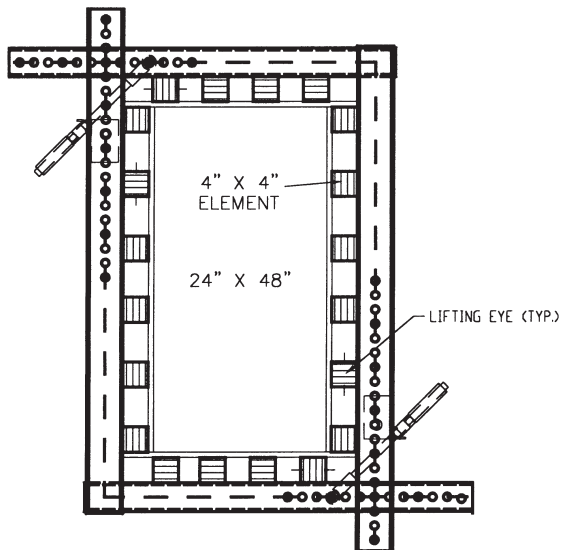


PLAN 36" X 36" COLUMN

MULTI-CHANNEL DIAGRAMS



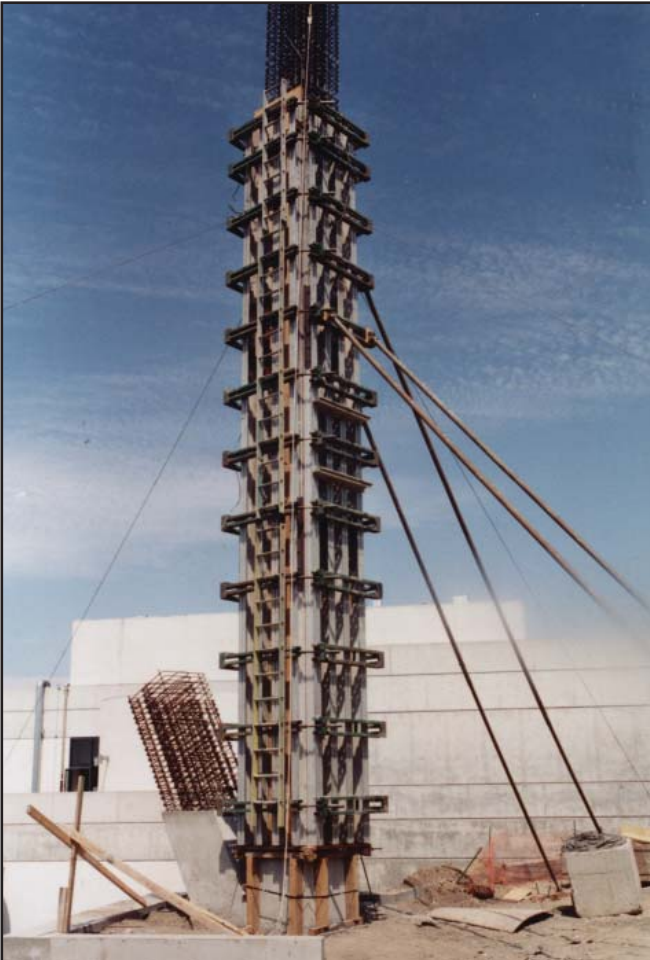
VARIOUS COLUMN DIMENSIONS



MULTI-CHANNEL PHOTOGRAPHS



MULTI-CHANNEL PHOTOGRAPHS





ATLAS CONSTRUCTION SUPPLY, INC.

CORPORATE OFFICE

**4640 BRINELL ST.
SAN DIEGO, CA 92111
PHONE (858) 277-2100
TOLL FREE 1-877-588-2100
FAX (858) 277-0585**



PHOENIX, AZ

**PH: (602) 256-0600
FAX: (602) 256-0687**

LOS ANGELES, CA

**PH: (714) 441-9500
FAX: (714) 441-9519**

DENVER, CO

**PH: (303) 298-7777
FAX: (303) 298-7778**

SAN FRANCISCO, CA

**PH: (510) 353-0100
FAX: (510) 353-0142**

LAS VEGAS, NV

**PH: (702) 227-6800
FAX: (702) 222-0488**

MEXICO

**PH: 001 (877) 586-2100
FAX: 001 (858) 277-0585**