

# COMBINATION AUCTION AND SEALED BID SALE

## PART ONE

### SEALED BID SALE OF PRODUCT LINES OF A MAJOR INDUSTRIAL & MILITARY WORK BOAT MANUFACTURER

(See Page 2 Inside)



PARTIAL VIEW OF LOT #1 PRODUCT LINE



PARTIAL VIEW OF LOT #2 PRODUCT LINE

At the Premises of

## SEARK MARINE, INC.

A MILITARY & INDUSTRIAL WORK BOAT MANUFACTURER

404 N. Gabbert Street  
MONTICELLO, AR 71655

(See Directions on Back Page)

**AUCTION: THURSDAY, APRIL 18 • 10:00 A.M.**

**INSPECTION:** Wednesday, April 17  
9:00 A.M. to 4:00 P.M. & Morning of Sale

**BUYER'S PREMIUM: 13% ONSITE • 16% WEBCAST**

## PART TWO

### AUCTION SALE OF MACHINERY & INVENTORY

Featuring Grove RT700E Rough Terrain Crane new in 2010; P&H 15 T. Cranes; Huge Quantities of Raw Material & Boat Piece Parts Inventory; W.I.P. incl. (2) 40' Hulls; Fab Equip. incl. Huge Qty. Welders; Truck Tractors & Rolling Stock; Forklifts; Boat Trailers; Power Tools; More!!!



GROVE 60 T. CAP. X 110' BOOM  
MDL. RT700E  
ROUGH TERRAIN CRANE

2010

376  
TOTAL  
HOURS

HUGE  
QUANTITY



SAMPLE VIEW OF RAW MATERIAL INVENTORY



HUGE  
QUANTITY

SAMPLE VIEW OF WELDING MACHINES

On-Site Bidding in Monticello, AR or Bid Via Webcast at [BidSpotter.com](http://BidSpotter.com)

Read Partial Terms and Conditions on Back Page of Brochure

Sale Conducted By:

## PLANT & MACHINERY INC.

AUCTIONEERS • APPRAISERS • LIQUIDATORS • REAL ESTATE

Bob Braman AR LIC. #1349

Ron Moore AR LIC. #1348

HOUSTON • DALLAS • ST. LOUIS

Headquarters:

2901 W. Sam Houston Pkwy. N., Suite A-130  
Houston, TX 77043

PHONE: (713) 691-4401

FAX: (713) 672-7905

E-MAIL: [pmi@pmi-auction.com](mailto:pmi@pmi-auction.com)

WEBSITE: [www.pmi-auction.com](http://www.pmi-auction.com)

## PART ONE

### SEALED BID SALE

**BID OPENING DATE IS THURSDAY, APRIL 18 • 8:30 A.M.**

Contact Plant & Machinery, Inc. for the Required Bid Package  
at (713) 691-4401

#### PRODUCT LINES TO BE SOLD BY SEALED BID

Sealed Bid Sale of the Intellectual Property of SeaArk Marine, Inc., a military and industrial work boat manufacturer, including any available offered: **designs, blueprints and drawings, jigs, manufacturing fixtures, molds, die tooling, engineering data, purchasing and bill of material files, CAD/CAM files, test reports, customer list, applicable trade show display photos**, located at the SeaArk facility at 404 N Gabbert St., Monticello, AR 71655.

**Lot #1** will include the available offered C. Raymond Hunt & Associates designed SeaArk Marine Inc. craft, specifically the Dauntless (28'-65') Commander (21'-27'), and SRP Trooper. All available versions of these craft are included (V, VC, RAM Class, etc.).

**Lot #2** will include the available offered SeaArk Marine Inc. designed craft, specifically Cathedrals (UT, Little Giant, Roustabout, Surveyor), Transporters (B-Series barges and landing craft), and Excursion Boats (Olympia, Explorer, Odyssey, and Fiesta), and available Enforcer series.

For Product Line Technical Information, contact [sales@seark.com](mailto:sales@seark.com)  
For a Sealed Bid Form, contact the auctioneer at 800-282-8466

PARTIAL VIEW OF  
LOT #1 PRODUCT LINE



PARTIAL VIEW OF LOT #2 PRODUCT LINE

## PART TWO

## AUCTION SALE OF MACHINERY & INVENTORY

### SHEET & SHAPE INVENTORY

**OVER \$450,000 COST INVENTORY OF UNUSED ALUMINUM AND STAINLESS STEEL PLATE AND SHAPES**, including (28) aluminum plates up to 1.25" x 96" x 240", large quantities of aluminum flat bars, channels, angles, beams, tees, rods, bars, schedule 40 and 80 piping up to 6" OD, stainless steel tubing, etc.





# AUCTION

**AUCTION: THURSDAY, APRIL 18 • 10:00 A.M.**

At the Premises of

## SEARK MARINE, INC.

A MILITARY & INDUSTRIAL WORK BOAT MANUFACTURER  
404 N. Gabbert St., MONTICELLO, AR 71655

*(See Directions on Back Page)*

### PART TWO

#### AUCTION SALE OF MACHINERY & INVENTORY

Featuring Grove RT700E Rough Terrain Crane new in 2010; P&H 15 T. Cranes; Huge Quantities of Raw Material & Boat Piece Parts Inventory; W.I.P. incl. (2) 40' Hulls; Fab Equip. incl. Huge Qty. Welders; Truck Tractors & Rolling Stock; Forklifts; Boat Trailers; Power Tools; More!!!



#### PURCHASED COMPONENTS

MERCURY SPORT JET 250 JET DRIVE ENGINE, 3 liter, V6, M sq.; (2) YANMAR AIR COOLED DIESEL ENGINES (new in box); DOZENS OF AIRPAX BREAKERS; (4) CINCINNATI 6" ELECTRIC BLOWERS, 1,230 CFM, new on skid; (3) NORCOLD 3.6 CU. FT. REFRIGERATORS; QUANTITY OF NEW PILOT SEATS w/air adjust; DOMETIC 24,000 BTU MARINE AIR CONDITIONING UNIT; QUANTITY OF MOLDED POLY PLASTIC WATER TANKS in 30 gal., 50 gal. and 101 gal. cap.; PERKO SOLAR RAY14" REMOTE CONTROLLED SPOT-LIGHT, Catalog No. 887-EA3-WHT14" (new in box); DIESEL INJECTORS; MUFFLERS; (2) DOMETIC 24,000 BTU COMPONETIZED AIR CONDITIONING SYSTEMS w/separated compressors; (4) COLEMAN 13.5 WATT UNITIZED AIR CONDITIONING AND HEATING UNITS; (8) SEALAND MDL. 510 TOILETS; LARGE QUANTITY OF EXTRUDED ALUMINUM FOLD-DOWN BENCH SEATS; OIL COOLERS; UNIFORCE TECHNOLOGIES BOAT CONTROL CONSOLES; LARGE ARRAY OF BOAT SEATING BENCHES, CUSHIONS AND CHAIRS; WINDSHIELDS; FILTERS; THOUSANDS OF PIPE FITTINGS; BALL, GATE, AND CHECK VALVES; ACTUATORS; CYLINDERS; FLANGES; BILGE AND HYDRAULIC PUMPS; THOUSANDS OF FASTENERS; WIDE ARRAY OF ELECTRICAL COMPONENTS; BATTERIES; WIRING HARNESSSES; CONTROL CONSOLE INSTRUMENTS; GAUGES; SENSORS; LIGHTING COMPONENTS; GASKETS; ANODES; EVENT RECORDERS; GPS SYSTEMS; FURUNO PLOTTERS AND DISPLAYS; FURUNO DEPTH SOUNDERS; RADIOS.

#### PURCHASED MATERIAL INVENTORY

LARGE QUANTITY OF NEW WIRE AND CABLE, solid core and stranded; SHRINK TUBING; NYLON ROPE; CABLE WAY; WIRE ROPE; MARINE GRADE CARPETING; VERY LARGE QUANTITY OF MARINE RUBBER HOSE; EXHAUST HOSE; SEAL TIGHT CABLE, WATER HEATER HOSE; FUEL HOSE; PVC PIPING; EXTRUDED RUBBER BUMPER; LARGE QUANTITY OF ALUMINUM WELD FITTINGS AND ELBOWS.

#### PROPELLERS

(22) COMPLETE SETS OF POWERTECH/KONRAD, stainless steel, w/mounting hardware and equipment (in matched pairs).

QUANTITY OF HONDA MARINE, stainless steel, in R.H. and L.H. various pitches.

LARGE QUANTITY OF MERCURY MARINE, stainless steel and aluminum, in R.H. and L.H. various pitches and diameters.

#### MANUFACTURED ALUMINUM COMPONENTS

LARGE QUANTITY OF ALUMINUM WORK-IN-PROCESS PIECE PARTS INCLUDING EXHAUST VENTS AND INTAKES; CONTROL CONSOLES; BATTERY BOXES; FUEL TANKS; AMMUNITION BOXES; DAVIT SOCKETS; BITTS; HATCHES; STANDOFFS; CLEATS; MUFFLER MOUNTS; BRACKETS; BUSHINGS; RUDDERS; SHAFTING.



#### WORK-IN-PROCESS INVENTORY

INCLUDING (2) 40' L. ALUMINUM BOAT HULLS READY TO BE OUTFITTED. OVER 11,000 LBS. TOTAL WEIGHT EACH.





**CNC**

ESAB 10' X 30' MDL. 2000-10 PLASMA CUTTER



**HUGE QUANTITY**

PARTIAL VIEW OF ELECTRIC TOOLS AND HAND TOOLS



**INSPECTION:** Wednesday, April 17  
9:00 A.M. to 4:00 P.M. & Morning of Sale

At the Premises of  
**SEARK MARINE, INC.**  
A MILITARY & INDUSTRIAL WORK BOAT MANUFACTURER  
404 N. Gabbert Street  
MONTICELLO, AR 71655  
(See Directions on Back Page)



(18) DELTA VERTICAL BANDSAWS



PARTIAL VIEW OF DEWALT AND MAKITA CHOP SAWS

**CNC PLASMA CUTTER**

**ESAB SABER MDL. 2000-10**, Esab CNC control system, 10' max. cutting width, 30' max. cutting length, auto. torch height control, L-Tec Mdl. PCM 703 plasma pwr. supply system, Hankinson chiller unit, approx. 9' x 30' cross slat cutting table, S/N 94-BIS-2956.

**HYDRAULIC PIPE BENDERS**

**GREENLEE 2-STATION WORKSTATION**, large qty. of dies, hyd. pump and (2) Greenlee bending units—first unit Mdl. 880 from 1/2" to 2" cap. and second unit Mdl. 884-5 up to 4" cap., w/wide assortment of bending dies and fabricated metal bench.

**GREENLEE MDL. 880**, assorted bending dies, fabricated steel bench.

**HYDRAULIC BULLDOZERS**

(3) **SHOP BUILT APPROX. 10 T. CAP.**, w/H.D. hyd. cylinders, unitized hyd. units.

**SHOP EQUIPMENT & POWER TOOLS**

(18) **DELTA VERTICAL BANDSAWS**, 110 v. motor, fabricated steel stand, Catalog No. 28-245.

(9) **DEWALT AND MAKITA CHOP SAWS**, most mtd. to linear bench w/aluminum attaches.

**LARGE QUANTITY OF PNEUMATIC POWER TOOLS INCLUDING CHISELS; RIGHT ANGLE POLISHERS; DIE GRINDERS; PNEUMATIC DRILLS; PNEUMATIC RIGHT ANGLE GRINDERS** up to 6" cap. by Chicago Pneumatic, Sioux, all high quality designs; **JIG SAWS; SKIL WORM DRIVE CIRCULAR SAWS; ELECTRIC RIGHT ANGLE GRINDERS; SPIN RIVET TOOL.**

**HAND TOOLS**

(2) **HYDRAULIC BODY KITS**, w/assorted attachments; **LARGE QUANTITY OF FORGED ALUMINUM C-CLAMPS** up to 12" cap., adj. design; **HUGE QUANTITY OF VISE GRIP WELDING CLAMPS; STANDARD AND EXTENDED THROAT DEPTH CLAMPS** up to 16" cap.; **CRIMPERS; PIPE BENDERS; HYDRAULIC BOTTLE JACKS; LEVELS.**

**MISCELLANEOUS SHOP & WAREHOUSE EQUIPMENT**

**AIRLESS SPRAY PAINTING SYSTEMS; GRACO PRESIDENT PORTABLE AIRLESS SPRAY UNIT** w/cart; (6) **PNEUMATIC SPRAY UNITS**; (3) **1 GAL. PNEUMATIC PAINT POT; PORTABLE PRESSURE WASHER; LARGE QUANTITY OF FABRICATED ALUMINUM HORSES AND LADDER SECTIONS.**



**HUGE QUANTITY**

PARTIAL VIEW OF PNEUMATIC POWER TOOLS



PARTIAL VIEW OF MIG WELDING MACHINES



PARTIAL VIEW OF TIG WELDING MACHINES

### MIG WELDING MACHINES

(2) MILLER DELTAWELD MDL. 452 WELDER, 450 amp @ 38 v., 100% duty cycle, AEC 200-1 Profax control, aluminum spool gun, S/N KG137632, S/N LC312710.

(20) AIRCO MDL. CV450 WELDERS, 450 amp @ 38 v., 100% duty cycle, aluminum spool gun, Profax Mdl. AEC200-1 control.

(20) LINCOLN MDL. CV400 WELDERS, new 2002 to 2003, 400 amp @ 36 v., 100% duty cycle, aluminum spool welding gun, Profax AEC200-1 control.

(13) AIRCO MDL. CV300II WELDERS, 300 amp @ 35 v., 100% duty cycle, most eqpd. w/aluminum spool gun.

MILLER MDL. CP300 WELDER, 300 amp @ 32 v., 100% duty cycle, aluminum spool gun, S/N HH018844.

(5) AIRCO AIRCOMATIC MDL. 250 WELDERS, 250 amp @ 35 v., 100% duty cycle,

(6) MILLER MDL. CP250 WELDERS, 250 amp @ 35 v., 100% duty cycle, aluminum spool gun.

### TIG WELDING MACHINES

MILLER SYNCROWAVE MDL. 300 TIG WELDER, 300 amp @ 32 v., 60% duty cycle, S/N JH301075.

LINCOLN MDL. 300/300 TIG WELDER, 300 amp AC/DC @ 32 v., 60% duty cycle, S/N AC714612.

MILLER MDL. 330ABP WELDER, 300 amp @ 30 v., 60% duty cycle, S/N HK347815

LINCOLN PRECISION TIG MDL. 275, 275 amp @ 31 v., 40% duty cycle, S/N U1030400179.

(2) MILLER SYNCROWAVE MDL. 250 TIG WELDERS, 250 amp @ 30 v., 40% duty cycle, S/N KF856090, S/N KF826944.

### MISCELLANEOUS WELDING & PLASMA EQUIPMENT

HYPERTHERM MDL. MAX42 PLASMA CUTTER, portable stand, S/N 010124.

LINCOLN PROCUT MDL. 55 PLASMA CUTTER, portable cart and plasma torch, S/N U1040717520.

(2) NELSON MDL. NCD100 STUD WELDERS, w/ guns and supplies.

LINCOLN IDEALARC MDL. 250 AC ARC WELDER, S/N 569438.

### AIR COMPRESSORS

INGERSOLL-RAND MDL. IRN758-CC VARIABLE SPEED, new 2002, 75 HP variable spd. drive, S/N NV5285U02213.

INGERSOLL-RAND MDL. SSREP75 ROTARY SCREW, rated @ 320 CFM cap., 75 HP drive motor, skid mtd., noise enclosure, S/N F5075U92.

### AIR DRYERS

INGERSOLL-RAND MDL. TZ160 DESICCANT, fabricated stand, S/N 6774.

WILKERSON MDL. H12-EH-000 REFRIGERATED, S/N 11-25-92-9080.

### PORTABLE SANDBLAST UNIT

CLEMCO MDL. 2452, approx. 600 lb. cap., portable base, blast hose, wheels and accessories.



VARIABLE SPEED

INGERSOLL-RAND 75 HP AIR COMPRESSOR



COOLTECH A/C SERVICE CART

On-Site Bidding in Monticello, AR or Bid Via Webcast at [BidSpotter.com](http://BidSpotter.com)

**AUCTION: THURSDAY, APRIL 18  
10:00 A.M.**



(2) NELSON MDL. NCD100 STUD WELDERS

### BALD EAGLE CRUISER CUSTOM 30' HOUSEBOAT

Custom built for the owner of SeaArk Marine and loaded with amenities. 30' L. X 10' beam, sleeps 4, two Mercury 225 Optimax counter rotating outboards, 200 gal. fuel, 60 gal. fresh water, 30 gal. black water, full compliment of electronics, galley, gen set, central air/heat, davit w/12' boat and 15 HP motor, triple axle trailer, Much More. 15,580 lbs. boat and trailer with full fluids.



**2010**

**376  
TOTAL  
HOURS**

**GROVE 60 T. CAP. X 110' BOOM MDL. RT700E ROUGH TERRAIN CRANE**

**INSPECTION:** Wednesday, April 17, 9:00 A.M. to 4:00 P.M. & Morning of Sale



**(2) P&H 15 T MDL. RT150 ROUGH TERRAIN CRANES**



**NAVISTAR EAGLE MDL. 94006X4 TRUCK TRACTOR**



**B&M MFG. MDL. LD-PTU TRIPLE AXLE 26' PONTOON TRAILER**

**2002**



**CHEVROLET C5500 8' FLATBED TRUCK**

At the Premises of  
**SEARK  
 MARINE, INC.**  
 A MILITARY & INDUSTRIAL WORK BOAT  
 MANUFACTURER  
 404 N. Gabbert Street  
**MONTICELLO, AR 71655**  
*(See Directions on Back Page)*

**ROUGH TERRAIN CRANES**

**GROVE 60 T. CAP. MDL. RT700E**, new 2010, removable counterweight system, 110' 4-section boom, 60 T. cap. main block, 16,800 lb. cap. block and hoist, 40' swing-away jib, PAT computerized load monitor system, temp. controlled cab, digital load scale, 376 ttl hrs., S/N 228543.

**(2) P&H 15 T. CAP. MDL. RT150**, 456 Detroit Diesel engine, 60' 3-section boom, S/N 43740, S/N 31299.

**VEHICLES**

**NAVISTAR EAGLE MDL. 94006X4 CLASS 8 TRUCK**, new 1999, 52,000 lb. G.V.W.R., Fuller trans., Cummins diesel engine, 232" wheel base, dbl. bunk sleeper, VIN 2HSFHAER9XC048428.

**GMC CLASS 8 TRUCK**, new 1994, 50,080 lb. G.V.W.R., Fuller RTX136098 trans., Cummins 94/ML-330E engine, 158" wheel base, white exterior, CB radio, VIN 4V1JDBPF5SR836983.

**INTERNATIONAL HARVESTER MDL. S2500 CLASS 8 TRUCK**, new 1986, 50,000 lb. G.V.W.R., 2-spd. trans axle, VIN 1HS720TL10D33592.

**MACK ECONODYNE MDL. R690T SERVICE TRUCK**, new 1985, diesel engine, large cap. service body w/AutoCrane 6006 crane, Speedaire gasoline pwr'd. air compressor, air receiver tank, extension ladder, assorted accessories, Miller Trailblazer 203 diesel portable welder (offered separately), VIN 1M2N267X-1GA002409.

**CHEVROLET MDL. C5500 FLATBED TRUCK**, new 2002, 19,500 lb. G.V.W.R., 6-spd. manual trans., Duramax diesel engine, 11' x 92" diamond plate steel deck w/headache rack and disappearing 5th wheel ball, standard hitch, VIN 1GBE5E1183F502692.

**CHEVROLET PICKUP TRUCK**, new 1998, ladder rack, VIN 1GCCS1941W8172017.

**(2) CHRYSLER RAM 3500 15-PASSENGER VANS**, new 1999 and 1998, 1 T. cap., VIN 2B5WB3520WK135265 (1998), VIN 2B5WB3527XK538502 (1999).

**ARGO MDL. VE698-58 AMPHIBIOUS ALL TERRAIN VEHICLE**, 6-wheel, Briggs & Stratton Vanguard 18 HP V twin engine, forward mtd. winch, S/N BF10523.

**HONDA ALL TERRAIN VEHICLE**, 4-wheel, front mtd. winch.



**24' L LOW PROFILE FLATBED TRAILER**



**HYSTER 8,500 LB. CAP. MDL. H90FT LPG FORKLIFT**



**(1 OF 2) WINDHAM 12,000 LB. CAP. ROUGH TERRAIN DIESEL FORKLIFTS**



**HYSTER 4,000 KG (8,800 LB.) CAP. DIESEL FORKLIFT**

## TRAILERS

**CUSTOM FLATBED**, approx. 24'L. tandem axle.

**CUSTOM**, tandem axle, approx. 24'L., low deck design, 16' ht. from deck to pavement, approx. 77" dist. btn. wheel wells, stake pockets, rub rails, currently arranged for pintle hitch.

**36'L. CUSTOM STEP DECK TRAILER**, tandem axle, 8' upper deck (not currently licensed).

**36'L. GOOSENECK TRAILER**, tandem axle, 8' wood deck, rub rails, stake pockets, landing gear, VIN 3118320889168.

## YARD DOLLIES

**(2) 45'L. X 8'W.**, tandem axle.

**36'L.**, sgl. axle, I-beam construction.

**30'L. X 115"W. FLATBED**, triple axle.

**27'L.**, triple axle, fabricated steel construction.

**20'L.**, tandem axle.

**15'L. X 18'W. FLATBED**, landing gear.

## FORKLIFTS

**(2) WINDHAM 12,000 LB. CAP. MDL. W12-80 ROUGH TERRAIN**, diesel engine, 109" 2-stage mast, 180" est. max. lift ht., 48" forks, 62"W. fork carriage, dual front pneu. tires, S/N 3145, S/N 3067.

**HYSTER 8,500 LB. CAP. MDL. H90FT**, new 2010, LPG, 310" max. lift, 48" forks, dual 7.00x15 solid front tires, 7.00x12/5 rear tires, 48"W. fork carriage, side shift, load grate, dock lights, approx. 1,350 hrs. on meter, S/N P005V02653H.

**HYSTER 4,000 KG (8,000 LB.) CAP. MDL. H4.00XL5**, diesel engine, 3700 MM lift (145") height, 48" forks, dual 7.00x15 solid front tires, side shift, 63"W. fork carriage, S/N G005A09337V.

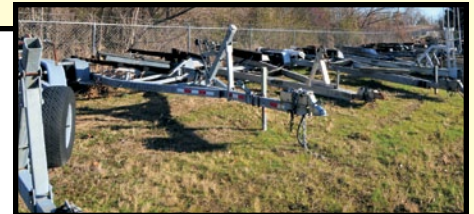
**HYSTER MDL. S40XMS**, LP engine, 4,000 lb. cap. @ 20" load center, 29-1/2" max. lift, 48" forks, solid tire, side shift, load grate, dock lights, S/N C010H05836W.

## MATERIAL HANDLING EQUIPMENT

**LARGE QUANTITY OF ELECTRIC CHAIN HOISTS** up to 4 T. cap. by Jet, Kone, CM and Budgit—most w/trolleys; **(12) 67"W. X 46"L. X 55" DP. SCRAP HOPPERS**; **COOLTECH MDL. 304288 AIR CONDITIONING SERVICE CART**, hoses, gauges and accessories (photo page 5); **DIGITAL CRANE SCALE**.



**PARTIAL VIEW OF LARGE QTY. HOISTS**



## BOAT TRAILERS

**(4) BOATMASTER 15,000 LB. CAP. MDL. SAG 30DA-150**, new 2003 and 2001, triple axle, winch, VIN 42XG303X3F010244, VIN 42XG3035YF009377, VIN 42XB3036ZF009372, VIN 42XG30372F009378.

**BOATMASTER 15,000 LB. CAP. MDL. SAG DTP-150**, new 2001, triple axle, winch, VIN 42XBG303YF009373.

**BOATMASTER 13,500 LB. CAP. MDL. 3032HDH**, triple axle, winch, VIN 42XBB6039LF004241.

**B&M MFG. MDL. LD-PTU TRIPLE/26 PONTOON TRAILER**, new 2008, 5,196 lb. G.V.W.R., triple axle, winch style lift mechanism and landing gear, VIN 19BER18308CA80004.

**BOATMASTER 12,000 LB. CAP. MDL. SA27-C-120**, aluminum tandem axle, winch, VIN 42XB K27249H113178.

**BOATMASTER 10,000 LB. CAP. MDL. 224-TH**, aluminum tandem axle, winch, VIN 42XBB222-4VF007409.

**EZ LOADER 8,500 LB. CAP. MDL. TEZB 28-30**, new 2007, tandem axle, 4-bunks, 30'-3" O/A lgth., VIN 1ZEAAANYG37A128878.

**(2) EZ LOADER 8,500 LB. CAP. MDL. TEZB 25-27**, new 2005, tandem axle, 4-bunks, 28'-3" O/A lgth., VIN 1ZEAAAVG85A23674, VIN N/A.

**(2) EZ LOADER 7,500 LB. CAP. MDL. TEZB 25-27**, new 2003 and 1995, tandem axle, 4-bunks, 28'-3" O/A lgth., VIN 1ZEAANTG93A1005944, VIN 1ZEIDT423TLP14632.

**EZ LOADER 7,500 LB. CAP. MDL. 1860**, tandem axle, VIN 1ZE1DTH21TLP06058

**BOATMASTER 7,000 LB. CAP. MODEL 224-T**, new 2000, aluminum tandem axle, winch, VIN 42XBB2227YF008441.

**BOATMASTER 5,000 LB. CAP. MDL. 2022-TL**, tandem axle, VIN 12XBB2020NF005086

**EZ LOADER 4,000 LB. CAP. MDL. TEZB 17-20/22**, new 2008, tandem axle, 2-bunks, 22'-3" O/A lgth., VIN 1ZEAAMPK18A008045.

**BOAT MASTER MDL. 2426TH**, aluminum tandem axle, VIN 42XBB2427MF004803.

**YACHT CLUB "HAWKEYE" 4,600 Lb. CAP. MDL. 2035TB**, VIN 4H100212050163630.



**ARGO MDL. VE698-58 AMPHIBIOUS VEHICLE**

**On-Site Bidding in Monticello, AR  
or Bid Via Webcast at**

**BidSpotter.com**

# PLANT & MACHINERY INC.

AUCTIONEERS • APPRAISERS • LIQUIDATORS • REAL ESTATE

P.O. Box 19100  
Houston, TX 77224-9100

**DATED MATERIAL - PLEASE DELIVER**

## PART ONE: SEALED BID SALE OF PRODUCT LINES OF A MAJOR INDUSTRIAL & MILITARY WORK BOAT MANUFACTURER

## PART TWO: AUCTION SALE OF MACHINERY & INVENTORY

Featuring Grove RT700E Rough Terrain Crane new in 2010; P&H 15 T. Cranes; Huge Quantities of Raw Material & Boat Piece Parts Inventory; W.I.P. incl. (2) 40' Hulls; Fab Equip. incl. Huge Qty. Welders; Truck Tractors & Rolling Stock; Forklifts; Boat Trailers; Power Tools; More!!!



**COMBINATION AUCTION  
AND SEALED BID SALE**

**MONTICELLO, ARKANSAS**



**PUBLIC INVITED**

**AUCTION: THURS., APRIL 18 • 10:00 A.M.**



**ATTENTION: PLANT MANAGER  
OR EQUIPMENT BUYER**

Presorted  
First Class Mail  
U.S. Postage  
PAID  
Eugene, Oregon  
Permit No. 17

### DIRECTIONS & LODGING

**FROM LITTLE ROCK, AR NATIONAL AIRPORT:** Exit airport using Airport Rd. Merge onto I-440 W and go approx. 2.3 miles. Take the I-30 W Exit on the left toward Hot Springs/Texarkana. Immediately merge onto I-530 S/US-65 S via Exit 138B on the left toward Pine Bluff and go approx. 46-1/2 miles. Merge onto US-65 S/US-425 S/US 425 Hwy. via the exit on the left toward Dumas/McGehee/Lake Village and go approx. 3 miles. Turn right onto US 425 Hwy./US-425 and go approx. 43 miles. Turn left onto US-278/AR-4/AR-35/W Gaines Ave. and go approx. .9 mile. Turn left onto N Gabbert St. and go to auction site. Watch for auction signs.

**Holiday Inn Express** ..... (800) 939-4249  
146 Dearman Dr., Monticello, AR  
**Super 8** ..... (870) 367-6271  
306 Highway 425 N, Monticello, AR  
**Economy Inn Express** ..... (870) 367-8555  
617 W Gaines St., Monticello, AR  
**Days Inn** ..... (870) 367-1881  
317 Highway 425 N, Monticello, AR

### UNABLE TO ATTEND?

Bid on-line in real time at  
**TO PARTICIPATE YOU MUST: BidSpotter.com**

1. Register at [www.BidSpotter.com](http://www.BidSpotter.com). **DO IT NOW.**
2. Either wire transfer, or mail a cashier's check deposit in the amount of **\$3,000 (U.S. Bidders) or \$10,000 (Foreign Bidders) to:**  
**Plant & Machinery, Inc., P.O. Box 19100, Houston, TX 77224-9100**  
**If you are using FedEx or another delivery service:**  
**2901 W. Sam Houston Pkwy. N., Suite A-130,**  
**Houston, TX 77043, (713) 691-4401**

**You must be registered and have your deposit in the hands of Plant & Machinery, Inc. at least 24 hours prior to the start of the auction. Failure to register and/or failure to send your deposit to Plant & Machinery, Inc. may disqualify you from bidding. DON'T WAIT.**

If you need assistance, don't hesitate to call (713) 691-4401.  
**ALL WEBCAST BIDS ARE SUBJECT TO A 16% BUYER'S PREMIUM.**

### FINANCE YOUR AUCTION PURCHASE

Conserve Your Cash & Increase Your Bidding Power

**AuctionLea\$e Provides M&E Financing  
With Approvals from \$5,000 to \$999,000  
(800) 438-1470**

**Apply Online: [www.AuctionLease.com](http://www.AuctionLease.com)**

### PLANT & MACHINERY INC. APPRAISAL DIVISION

Confidential Industrial Machinery & Equipment  
Appraisals Call **1-800-282-8466**

### PARTIAL TERMS & CONDITIONS - SEE BID PACKET FOR SEALED BID TERMS & CONDITIONS

A 13% Buyer's Premium Will Apply On-site.

A 16% Buyer's Premium Will Apply to Webcast Bids. See Above Rules for Participation.

Everything will be sold to the highest bidder or bidders for cash in accordance with the auctioneer's Customary Terms of Sale, copies of which will be posted on the premises.

**ALL PAYMENTS MUST BE MADE BY CASH, CASHIER'S CHECK, WIRE TRANSFER OR COMPANY CHECK WITH BANK LETTER GUARANTEEING PAYMENT TO PLANT & MACHINERY INC.**

Here is an example of what your letter should be: *Mr. "Customer Name" is a customer of this bank. This bank will guarantee unqualified payment to PMI on the account listed herein up to the amount of \$ \_\_\_\_\_. This letter is good until May 17, 2013.*

In default of payment of bills in full within the time therein specified, the Auctioneer in addition to all other remedies allowed by law, may retain all monies received as deposit or otherwise, as liquidated damages. All items must be removed by the time announced at the start of the sale.

Lots not paid for and/or removed within the time allowed may be resold at public or private sale without further notice, and any deficiency, together with all expenses and charge of resale, will be charged to the defaulting purchaser.

The buyer acknowledges that he or an agent has inspected all of the assets upon which he will be bidding and/or does purchase.

Buyer agrees to accept assets purchased "AS IS," "WITH ALL FAULTS" and "WITH REMOVAL AT BUYER'S RISK AND EXPENSE." THE AUCTIONEER EXPRESSLY DISCLAIMS ON THE PART OF THE AUCTIONEER AS AGENT AND THE SELLER, ANY WARRANTY AS TO FITNESS OR USABILITY OF ALL THE ASSETS, AND THE BUYER EXPRESSLY WAIVES ANY CLAIM IN RESPECT TO ANY POSSIBLE FUTURE USE OF ANY ASSET PURCHASED FOR ANY PURPOSE WHATSOEVER.

The buyer does hereby assume and does agree to indemnify and hold the auctioneer harmless from any future claim which shall pertain to the fitness or use of that asset as being purchased. Riggers, movers, electricians and buyers performing work at the Auction Site must provide PMI with evidence of insurance. The insurance coverage must be at a level acceptable to PMI and to the seller. PMI reserves the right to withdraw items, alter the order of the sale, accept bids from the seller, and group lots as it may deem appropriate. This auction may include consignment items.

Although all information has been obtained from sources deemed reliable, the auctioneer and seller make no warranty or guarantee, expressed or implied, as to the accuracy of the information herein contained, or contained in our catalog. It is for this reason that buyers should avail themselves of the opportunity to make inspection prior to the auction. Although it is not likely, auction sales are subject to cancellation or postponement. Kindly contact auctioneer prior to attendance.

These terms and conditions may be modified or supplemented by language in the catalog available at the sale site or by announcement at the start of the sale. Bidders should be attentive to those announcements and to the catalog language.