

# T300

Compact Track Loader



***One Tough Animal™***





## **T300 Compact Track Loader**

*with Vertical Lift Path*

Impressive pushing power and tractive effort are provided by a 81 hp, 4-cylinder, turbo-charged, diesel engine and 17.7-inch wide tracks. A 21.2 GPM pump and 3300 PSI relief give the T300 excellent hydraulic breakout and lifting capabilities as well as power for running attachments, including the Brushcat® rotary cutter, dozer blade, landscape rake, stump grinder, tiller and others.

That's a lot of muscle in such a compact machine — only 81 inches high, 80 inches wide and 142.9 inches long!

The loader's unique track system produces a smooth ride as well as the added traction you need for tough digging applications. The tracks also provide low 4.1 PSI ground pressure, making the T300 ideal for working in soft ground conditions.

Other performance features include the T300's transverse-mounted engine for single-side servicing, dual path cooling, sealed and lubricated roller bearings, unsurpassed operator comfort and security and cushioned tilt cylinder.

# **Tough Tracks fo**

***New Bobcat T300 Compact Track Loader with Vertical Lift Path delivers superior traction and loads of lift!***

Experience the incredible power and smooth ride of the T300 compact track loader. It's definitely the right loader for the toughest applications.

The T300's dedicated rubber track system keeps you working in soft, muddy ground conditions, easily handling the toughest jobs.

A wide choice of Bobcat attachments adds to the productivity and versatility of this operator-friendly, cost-effective machine. Like all Bobcat loaders, the T300 is designed for unsurpassed toughness, dependability and serviceability.



**3,000** lb.

Rated  
Operating  
Capacity

**126.4** in.

Lift  
Height

**34** in.

Reach

**6.6** mph

Travel  
Speed



# For Tough Tasks



## *Vertical Lift Path*

The T300's low-profile lift arms give the operator a great view to all four corners of the machine – and the vertical lift path delivers excellent reach and a hefty 3,000 pounds of rated operating capacity.



*A wide choice of attachments, such as the stump grinder, add to the productivity and versatility of this operator-friendly, work-saving machine.*



|    |                             |                              |
|----|-----------------------------|------------------------------|
| ph | <b>81</b> hp                | <b>21.2/37</b> gpm           |
|    | Turbo-Charged Diesel Engine | Auxiliary Flow/<br>High-Flow |







# T300

**Compact Track Loader**

## Worldwide Support.

With the Bobcat T300, you get more than an exceptional loader.

You also get the support of a worldwide network of Bobcat dealers offering industry-leading attachments, accessories and parts availability.

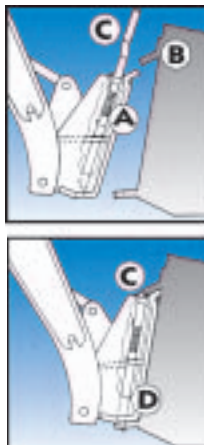
Their factory-trained service technicians are equipped to handle all your parts and service requirements, including engine and hydrostatic/hydraulic components.

There's an excellent warranty program, too.

Get all the details from your Bobcat dealer.

## Choice of Attachments

As with any Bobcat loader, you can count on a variety of quick-mounting Bobcat attachments for the T300. The operator can easily replace a bucket with a backhoe, pallet fork, landscape rake, sweeper, tiller, grapple and many more. Hookup is easier with the new optional Power Bob-Tach™ mounting system!



### Exclusive Bob-Tach™ System

For fast, secure attachment changes. Bob-Tach frame (A) moves into attachment flange (B) handle (C) pushes down easily, pressing wedge (D) through frame and attachment hole for solid connection. Power Bob-Tach available!

## Greater Comfort

- The T300 cab is operator-friendly, designed for maximum comfort and functionality.
- With its larger cab opening, the loader is easy to enter and exit.
- The innovative seat bar pivots from the rear, providing secondary restraint protection and serving as a comfortable armrest for operators of all sizes.
- High-output halogen headlamps double the amount of illumination to the work area for better operation in low light.
- The T300 also features a new, easy-to-read, highly functional instrument panel, along with a number of value-added options.
- Air conditioning is available in the fully climate-controlled cab.

## More Options

- Factory- or field-installed deluxe instrument panel includes keyless start, feature lockouts, attachment operation help screens, monitoring and diagnostic functions.
- High-flow auxiliary hydraulics operate attachments such as planers and stump grinders.
- Fully-adjustable suspension seat for all-day operator comfort.
- Cab heater and air conditioning.
- Power Bob-Tach™ mounting system.
- Selectable Joystick Controls.

## Added Value

Couple all the work-saving features of the model T300 with proven power and smooth ride, and you have a skid-steer loader that delivers optimum performance on every jobsite!

# Bobcat engineering sets the standard for value, comfort and operator-friendly performance!

## The Bobcat Standard

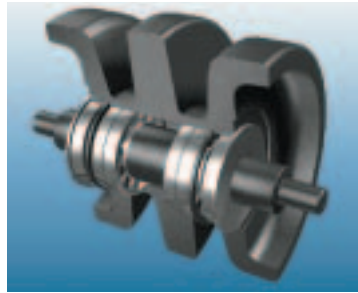
Combine all these outstanding features with ease of operation, versatility, maneuverability, wide choice of attachments, worldwide dealer support, service backup, parts availability and high resale, and it all adds up to **total value that can't be matched.**



**Track tensioning.** Track adjustment is easily accomplished by adding grease to the tensioning cylinder.



Coil spring absorbs varying loads when working in tough applications



**Permanently lubricated idlers and rollers.** Fully sealed and grease-lubricated for life. No maintenance is required.



The **Bobcat belt drive advantage** means Bobcat loader engines can be run slower, resulting in a quieter machine that lasts longer and uses less fuel. This system also maximizes pump efficiency and minimizes steering lever effort.



**Built-in safety.** The Bobcat Interlock Control System (BICS™) requires the operator to be seated in the loader with the seat bar in place and the engine running.



**Clean cooling.** The exclusive Bobcat dual path cooling system brings clean, cool air from above, through the engine and hydraulic oil coolers, mixes it with engine compartment air, then exhausts it out two side vents.



**Bobcat serviceability** is unsurpassed. Simply open the swing-out tailgate for full access to the engine's checks and fills, filters and battery. Shop time is spent repairing, not gaining access.

**Setting the standard for comfort, safety and visibility.** The T300 cab is designed to give you more operator comfort and better all-around visibility.



**The optional, fully-adjustable suspension seat** allows comfortable all-day operation. The innovative seat bar pivots from the rear, providing secondary restraint protection and serving as a comfortable armrest for operators of all sizes.



**Climate-controlled cab.** High-visibility front door — with 49% more glass — includes wiper and washer. Along with top, rear and side windows, it will completely seal the cab for efficient heater/vent/AC use.



**All-around visibility.** Bobcat cab design gives you a super view in all directions.

**State-of-the-art instrument panels** provide dozens of operational features, diagnostics and monitoring. Optional deluxe instrument panel includes keyless start security system, feature lockouts, digital time and job clocks, multi-language display, even a "help" menu.



LEFT Side Standard Instrument Panel



RIGHT Side Standard Instrument Panel



OPTIONAL Deluxe Instrument Panel



# Bobcat® T300 Compact Track Loader

## Specifications

### Performance

Rated Operating Capacity<sup>1</sup>  
Operating Capacity  
Tipping Load  
Hydraulic Pump Capacity  
High Flow Option  
Ground Pressure (18 in. tracks)  
Travel Speed  
Operating Weight

### T300

3000 lb. (1361 kg) @ 35% of tipping load  
4317 lb. (1958 kg) @ 50% of tipping load  
8633 lb. (3916 kg)  
21.2 GPM (80.25 L/min.)  
37 GPM (140.1 L/min.)  
4.1 psi  
6.6 MPH (10.6 km/hr.)  
9354 lb. (4243 kg)

### Dimensions

Length (with bucket)  
Width (with bucket)  
Height  
Height to Bucket Pin

142.9 in. (3630 mm)  
80.0 in. (2032 mm)  
80.9 in. (2055 mm)  
126.4 in. (3211 mm)

### Engine

Model  
Fuel/Cooling  
Cylinders  
Maximum HP/Displacement  
Fuel Tank Capacity

### Tier II Compliant

V3300M-DI-T  
Diesel/Liquid  
4  
81/202.53 in.<sup>3</sup> (60.4 kW / 3,318 L)  
30 gal. (113.6 L)

### Operation

Steering and Drive  
  
Hydraulics  
  
  
Transmission

Direction and speed controlled by two hand levers.  
Fully-hydrostatic, rubber track drive.  
Raise/lower lift arms and dump/rollback bucket controlled by two foot pedals or optional hand controls.  
Hydrostatic.

### Standard Features

Adjustable Suspension  
Seat, vinyl  
Automatically Activated  
Air Intake Heater  
Auxiliary Hydraulics  
(Variable Flow/Max. Flow)  
Bob-Tach™  
Bobcat Interlock  
Control System (BICS)  
Deluxe Operator Cab  
  
Engine/Hydraulic  
Systems Shutdown  
Lift Arm Support  
Lights, Front and Rear  
Parking Brake  
Seat Bar  
Seat Belt  
Spark Arrestor Muffler  
Tracks (17.7 in., Rubber)  
Turbo-Charger

### Options/Accessories

Advanced Control System  
Air Conditioning  
Alarm Package (Backup  
Alarm and Horn)  
Cab Enclosure  
Cab Heater  
Catalytic Exhaust Purifier  
Deluxe Instrument Panel  
Fire Extinguisher Kit  
FOPS Kit  
Four-Point Lift Kit  
Four-Way Flasher Light Kit  
High-Flow Auxiliary  
Hydraulics  
Hydraulic Bucket  
Positioning  
  
Power Bob-Tach™  
Rear Auxiliary Hydraulics  
Rotating Beacon Light  
Seat Bar  
Seat Belt, 3 in. wide  
Seat Belt, 3-point  
Selectable Joystick  
Controls  
Side Windows Kit  
Sound Option  
Special Applications Kit  
Strobe Light Kit  
Suspension Seat  
(cloth cover)  
Tailgate Lock Kit  
Tracks (12.6 in., Rubber)

## Bobcat T300 compact track loader... greater performance, visibility, comfort and value!

Extend your working season with the powerful, versatile T300 compact track loader! Rugged rubber tracks deliver extra traction, greatly reduced ground pressure and low ground disturbance. Superior flotation too, for working on soft, wet, even muddy ground where other machines stop dead! The T300's powerful vertical-path lift arms deliver plenty of lift capacity for handling heavy loads!

### Operator Training

Training kits, available through your Bobcat dealer's parts department, let you train current and new operators and service technicians on the latest safety operation and servicing functions on Bobcat loaders. A Spanish language version is also available. Check the Bobcat website for more information: [www.bobcat.com](http://www.bobcat.com)



**3000 LB.**  
Rated Operating Capacity

**126.4 IN.**  
Lift Height

**81 HP**  
Turbo-Charged, Liquid-Cooled Diesel Engine

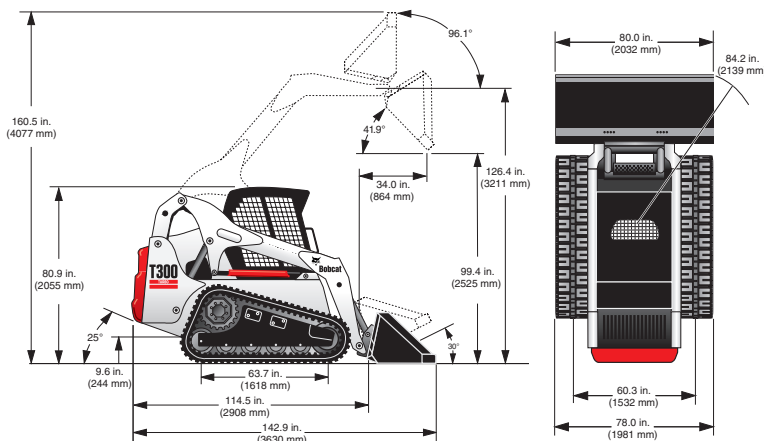
<sup>1</sup>Operating capacity rated with standard digging bucket according to SAE standard J818 and ISO 14397 - RATED OPERATING CAPACITY TO EQUAL NO MORE THAN 35% THE TIPPING LOAD.

<sup>2</sup>Bucket positioning helps operator keep the same tilt of the load during lifting.

<sup>3</sup>Includes lexan front door, top and rear windows.

<sup>4</sup>Special application kit (see #3) must be used.

NOTE — Where applicable, dimensions are in accordance with Society of Automotive Engineers (SAE) and ISO standards. Specifications and design are subject to change without notice. Pictures of Bobcat skid-steer loaders may show other than standard equipment. All dimensions are shown in inches. Respective metric dimensions are enclosed by parentheses. Bobcat Company complies with the requirements of ISO 9001 as registered with BSI.



B-1762

**Bobcat Company**  
P.O. Box 6000 • West Fargo, ND 58078  
[www.bobcat.com](http://www.bobcat.com)

Printed in U.S.A.

An **IR** Ingersoll Rand business

Kn-15M-905-#B6344805-F

## Bobcat Attachments for this model:

Angle Broom\*  
Auger  
Backhoe  
Bale Fork  
Brush Saw  
Buckets  
Chipper\*  
Combination Bucket  
Concrete Mixer\*  
Concrete Pump\*  
Dozer  
Drop Hammer  
Dumping Hopper  
Flail Cutter  
Grapple, Industrial  
Grapple, Root  
Hydraulic Breaker<sup>4</sup>  
Landplane  
Landscape Rake  
Pallet Fork-  
Heavy-Duty  
Planer\*  
Rear Stabilizer  
Scraper  
Seeder  
Snow V-Blade  
Snowblower\*  
Sod Layer\*  
Soil Conditioner\*  
Spreader  
Stump Grinder\*  
Tiller  
Tree Spade  
Trench Compactor  
Trencher  
Vibratory Roller  
Water Kit  
Wheel Saw

\*Attachment Control  
Kit required.