

USER GUIDE

**Compact Wireless-G  
USB Network Adapter  
with SpeedBooster**

Model: WUSB54GSC



# About This Guide

## Icon Descriptions

While reading through the User Guide you may see various icons that call attention to specific items. Below is a description of these icons:



**NOTE:** This check mark indicates that there is a note of interest and is something that you should pay special attention to while using the product.



**WARNING:** This exclamation point indicates that there is a caution or warning and it is something that could damage your property or product.



**WEB:** This globe icon indicates a noteworthy website address or e-mail address.

## Online Resources

Website addresses in this document are listed without **http://** in front of the address because most current web browsers do not require it. If you use an older web browser, you may have to add **http://** in front of the web address.

Resource	Website
Linksys	<a href="http://www.linksys.com">www.linksys.com</a>
Linksys International	<a href="http://www.linksys.com/international">www.linksys.com/international</a>
Glossary	<a href="http://www.linksys.com/glossary">www.linksys.com/glossary</a>
Network Security	<a href="http://www.linksys.com/security">www.linksys.com/security</a>

## Copyright and Trademarks



Linksys, Cisco and the Cisco Logo are registered trademarks or trademarks of Cisco Systems, Inc. and/or its affiliates in the U.S. and certain other countries. Copyright © 2008 Cisco Systems, Inc. All rights reserved. Other brands and product names are trademarks or registered trademarks of their respective holders.

<b>Chapter 1: Product Overview</b>	<b>1</b>
LED . . . . .	1
<b>Chapter 2: Wireless Security Checklist</b>	<b>2</b>
General Network Security Guidelines . . . . .	2
Additional Security Tips . . . . .	2
<b>Chapter 3: Advanced Configuration</b>	<b>3</b>
How to Access the Wireless Network Monitor. . . . .	3
How to Use the Wireless Network Monitor. . . . .	3
Link Information . . . . .	3
Profiles . . . . .	6
<b>Appendix A: Troubleshooting</b>	<b>14</b>
<b>Appendix B: Windows Vista Zero Configuration</b>	<b>15</b>
Windows Vista Configuration . . . . .	15
New Wireless Connection . . . . .	15
<b>Appendix C: Windows XP Wireless Zero Configuration</b>	<b>18</b>
Windows XP Wireless Zero Configuration . . . . .	18
<b>Appendix D: Specifications</b>	<b>20</b>
<b>Appendix E: Warranty Information</b>	<b>21</b>
Limited Warranty. . . . .	21
Exclusions and Limitations. . . . .	21
Obtaining Warranty Service . . . . .	21
Technical Support . . . . .	22
<b>Appendix F: Regulatory Information</b>	<b>23</b>
FCC Statement . . . . .	23
FCC Radiation Exposure Statement . . . . .	23
Safety Notices. . . . .	23
Industry Canada Statement . . . . .	23
Avis d'Industrie Canada. . . . .	24
Wireless Disclaimer . . . . .	24
Avis de non-responsabilité concernant les appareils sans fil . . . . .	24
User Information for Consumer Products Covered by EU Directive 2002/96/EC on Waste Electric and Electronic Equipment (WEEE). . . . .	25
<b>Appendix G: Software License Agreement</b>	<b>29</b>
Software in Linksys Products . . . . .	29
Software Licenses . . . . .	29

# Chapter 1:

## Product Overview

---

Thank you for choosing the Compact Wireless-G USB Network Adapter with SpeedBooster. With this Adapter, your wireless networking experience will be faster and easier than ever.

Using the latest wireless networking technology, the Adapter adds or upgrades wireless connectivity on your notebook computer. To help protect your data and privacy, you can use industrial-strength WPA2 encryption to protect your wireless connection. The included Setup Wizard will walk you through configuring the Adapter to your network's settings, step by step.

### LED



**Link** (Green) The LED flashes when there is wireless network activity.

## Chapter 2: Wireless Security Checklist

Wireless networks are convenient and easy to install, so homes with high-speed Internet access are adopting them at a rapid pace. Because wireless networking operates by sending information over radio waves, it can be more vulnerable to intruders than a traditional wired network. Like signals from your cellular or cordless phones, signals from your wireless network can also be intercepted. Since you cannot physically prevent someone from connecting to your wireless network, you need to take some additional steps to keep your network secure.

### 1. Change the default wireless network name or SSID

Wireless devices have a default wireless network name or Service Set Identifier (SSID) set by the factory. This is the name of your wireless network, and can be up to 32 characters in length. Linksys wireless products use **linksys** as the default wireless network name. You should change the wireless network name to something unique to distinguish your wireless network from other wireless networks that may exist around you, but do not use personal information (such as your Social Security number) because this information may be available for anyone to see when browsing for wireless networks.

### 2. Change the default password

For wireless products such as access points and routers, you will be asked for a password when you want to change their settings. These devices have a default password set by the factory. The Linksys default password is **admin**. Hackers know these defaults and may try to use them to access your wireless device and change your network settings. To thwart any unauthorized changes, customize the device's password so it will be hard to guess.

### 3. Enable MAC address filtering

Linksys routers give you the ability to enable Media Access Control (MAC) address filtering. The MAC address is a unique series of numbers and letters assigned to every networking device. With MAC address filtering enabled, wireless network access is provided solely for wireless devices with specific MAC addresses. For example, you can specify the MAC address of each computer in your home so that only those computers can access your wireless network.

### 4. Enable encryption

Encryption protects data transmitted over a wireless network. Wi-Fi Protected Access (WPA/WPA2) and Wired Equivalency Privacy (WEP) offer different levels of security for wireless communication.

A network encrypted with WPA/WPA2 is more secure than a network encrypted with WEP, because WPA/WPA2 uses dynamic key encryption. To protect the information as it passes over the airwaves, you should enable the highest level of encryption supported by your network equipment.

WEP is an older encryption standard and may be the only option available on some older devices that do not support WPA.

### General Network Security Guidelines

Wireless network security is useless if the underlying network is not secure.

- Password protect all computers on the network and individually password protect sensitive files.
- Change passwords on a regular basis.
- Install anti-virus software and personal firewall software.
- Disable file sharing (peer-to-peer). Some applications may open file sharing without your consent and/or knowledge.

### Additional Security Tips

- Keep wireless routers, access points, or gateways away from exterior walls and windows.
- Turn wireless routers, access points, or gateways off when they are not being used (at night, during vacations).
- Use strong passphrases that are at least eight characters in length. Combine letters and numbers to avoid using standard words that can be found in the dictionary.



**WEB:** For more information on wireless security, visit [www.linksys.com/security](http://www.linksys.com/security)

## Chapter 3: Advanced Configuration

For Windows 2000 and Windows XP users, advanced configuration is performed through the Wireless Network Monitor (the Monitor). Windows Vista users should refer to *Appendix B: Windows Vista Wireless Zero Configuration*.

Use the Advanced Configuration feature to check the link information, search for available wireless networks, or create profiles that hold different configuration settings.

Diagnostics are performed through the Diagnostic utility. Use it to detect the Adapter, test the driver and Monitor, and troubleshoot if needed.

### How to Access the Wireless Network Monitor

After installing the Adapter, the Monitor icon appears in the system tray of your computer. If the Monitor is enabled, the icon is green. If the Monitor is disabled or the Adapter is not inserted, the icon is gray.



Wireless Network Monitor Icon

Double-click the icon to open the Monitor.

### How to Use the Wireless Network Monitor

The opening screen of the Monitor is the *Link Information* screen. From this screen, you can find out how strong the current wireless signal is and how good the connection's quality is. Click **More Information** to view additional status information about the current connection. To search for available wireless networks, click the **Connect** tab. To perform configuration changes or create connection profiles, click the **Profiles** tab.

### Link Information

The *Link Information* screen displays network mode, signal strength, and link quality information about the current connection. Click **More Information** for additional status information.



Link Information

**Ad-Hoc Mode or Infrastructure Mode** The screen indicates whether the Adapter is currently working in ad-hoc or infrastructure mode.

**Signal Strength** The Signal Strength bar indicates signal strength.

**Link Quality** The Link Quality bar indicates the quality of the wireless network connection.

Click **More Information** to view additional information about the wireless network connection on the *Wireless Network Status* screen.

### Wireless Network Status

The *Wireless Network Status* screen provides information on your current network settings.



Wireless Network Status

**Status** This shows the status of the wireless network connection.

**SSID** This is the unique name (SSID) of the wireless network.

**Wireless Mode** This is the mode of the wireless network currently in use.

**Transfer Rate** This is the data transfer rate of the current connection.

**Channel** This is the channel used by your wireless network.

**Security** This is the status of the wireless security feature.

**Authentication** This is your wireless network's authentication method.

**IP Address** This is the IP Address of the Adapter.

**Subnet Mask** This is the Adapter's Subnet Mask.

**Default Gateway** This is the Default Gateway address.

**DNS** This is the DNS address of the Adapter.

**DHCP Client** This displays the Adapter's status as a DHCP client.

**MAC Address** This is the MAC address of the wireless network's wireless router or access point.

**Signal Strength** The Signal Strength bar indicates the signal strength.

**Link Quality** The Link Quality bar indicates the quality of the wireless network connection.

Click **Back** to return to the initial *Link Information* screen. Click **Statistics** to go to the *Wireless Network Statistics* screen. Click **Save to Profile** to save the currently active connection settings to a profile.

## Wireless Network Statistics

The *Wireless Networks Statistics* screen provides statistics on your current network settings.



Wireless Network Statistics

**Transmit Rate** This is the data transmission rate of the current connection. (In Auto mode, the Adapter dynamically shifts to the fastest data transmission rate at any given time.)

**Receive Rate** This is the rate that the Adapter receives data.

**Packets Received** This shows the packets that the Adapter receives, in real time, after connecting to the wireless network or after clicking Refresh.

**Packets Transmitted** This shows the packets that the Adapter transmits, in real time, after connecting to the wireless network or after clicking Refresh.

**Bytes Received** This shows the bytes that the Adapter receives, in real time, after connecting to the wireless network or after clicking Refresh.

**Driver Version** This shows the Adapter's driver version.

**Noise Level** This shows the level of background noise that affects the wireless signal. A lower reading translates into a higher quality signal.

**Signal Strength** This is the intensity of the wireless signal that the Adapter receives.

**Up Time** This indicates the length of the most recent connection to a wireless network.

**Total Up Time** This indicates the cumulative total of the Adapter's connection time.

**Signal Strength** The Signal Strength bar indicates the signal strength.

**Link Quality** The Link Quality bar indicates the quality of the wireless network connection.

Click **Back** to return to the initial *Link Information* screen. Click **Status** to go to the *Wireless Network Status* screen. Click **Save to Profile** to save the currently active connection settings to a profile. Click **Refresh** to reset the statistics.

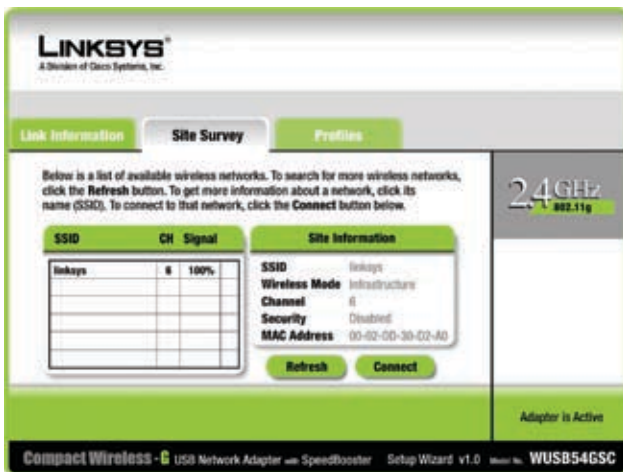
## Site Survey

This screen displays a list of available networks in the table on the left. You may click *SSID*, *CH* (Channel), or *Signal* to sort by that field.

**SSID** This is the SSID or unique name of the wireless network.

**CH** This is the channel that the network uses.

**Signal** This is the percentage of signal strength, from 0 to 100%.



Site Survey

## Site Information

For each network selected, the following settings are listed:

**SSID** This is the SSID or unique name of the wireless network.

**Wireless Mode** This is the mode of the wireless network currently in use.

**Channel** This is the channel to which the wireless network devices are set.

**Security** This is the status of the wireless security feature.

**MAC Address** This is the MAC address of the wireless network's wireless router or access point.

**Refresh** Click **Refresh** to perform a new search for wireless devices.

**Connect** To connect to one of the networks on the list, select the wireless network, and click **Connect**. If the network's wireless security is enabled, then you will view this screen:



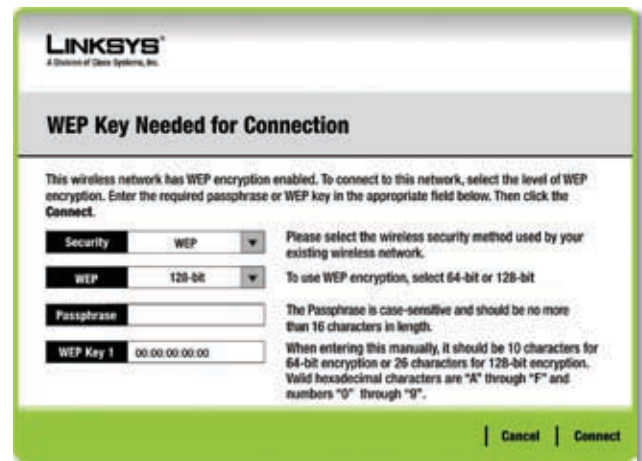
Click Continue

Make sure you have the security settings of your wireless network, and then click **Continue**.

Proceed to the instructions for the wireless security screen you see:

## WEP (Wired Equivalent Privacy)

If the network has WEP encryption enabled, then you see the *WEP Key Needed for Connection* screen.



WEP Security

**WEP** Select **64-bit** or **128-bit** encryption.

**Passphrase** Enter the network's Passphrase, so a WEP key is automatically generated. The passphrase is case-sensitive and must be 16 or fewer alphanumeric characters. It must match the passphrase of your other wireless network devices and is compatible with Linksys wireless products only. (For non-Linksys wireless products, enter the WEP key manually.)



**WEP Key 1** If you do not have the Passphrase, enter the WEP key, which must match the WEP key of your wireless network. For 64-bit encryption, enter exactly 10 hexadecimal characters (“0” to “9” and “A” to “F”). For 128-bit encryption, enter exactly 26 hexadecimal characters.

To connect to the network, click **Connect**. To cancel the connection, click **Cancel**.

### WPA (Wi-Fi Protected Access)

If the network has WPA Personal security enabled, then you see the *WPA Personal Needed for Connection* screen.

WPA-Personal Security

**Encryption** Select the type of algorithm you want to use, **TKIP** or **AES**.

**Passphrase** Enter the network’s Passphrase (Pre-Shared Key) of 8-63 characters.

To connect to the network, click **Connect**. To cancel the connection, click **Cancel**.

### WPA2 (Wi-Fi Protected Access 2)

If the network has WPA2 Personal security enabled, then you see the *WPA2 Personal Needed for Connection* screen.

WPA2-Personal Security

**Passphrase** Enter the network’s Passphrase (Pre-Shared Key) of 8-63 characters.

To connect to the network, click **Connect**. To cancel the connection, click **Cancel**.

## Profiles

The *Profiles* screen lets you save different configuration profiles for different network setups. The table on the left displays a list of available profiles with their profile names and wireless network names.

Profiles

**Profile** This is the name of the profile.

**SSID** This is the SSID or unique name of the wireless network.

### Profile Information

For each profile selected, the following are listed:

**Wireless Mode** This is the mode of the wireless network currently in use.

**Transfer Rate** This is the transfer rate setting..

**Channel** This is the channel used by your wireless network.

**Security** This is the status of the wireless security.

**Authentication** This is the authentication setting for the network.

**Connect** To connect to a wireless network using a specific profile, select the profile, and click **Connect**.

**New** Click **New** to create a new profile. See the next section, “Create a New Profile,” for instructions.

**Edit** Select the profile you want to change and click **Edit**.

**Import** Click **Import** to import a profile that is saved in another location. Select the appropriate file, and click **Open**.

**Export** Select the profile you want to save in a different location, and click **Export**. Direct Windows to the appropriate folder, and click **Save**.

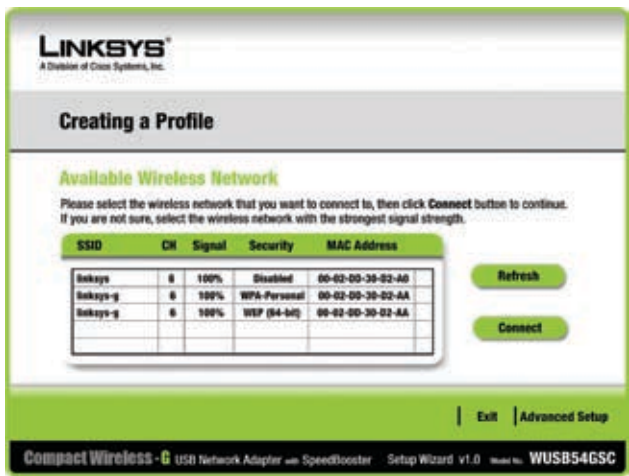
**Delete** Select the profile you want to delete and click **Delete**.



**NOTE:** If you want to export more than one profile, you must export them one at a time.

## Available Wireless Networks

The next screen is the *Available Wireless Networks* screen.



Available Wireless Networks

The networks available to this Adapter will be listed on this screen.

**Refresh** Click **Refresh** to update the Available Wireless Network list.

**Connect** Click **Connect** to connect to one of the available networks.

**Advanced Setup** Select this option to set up the adapter manually if your network is not listed in the Available Wireless Network list.

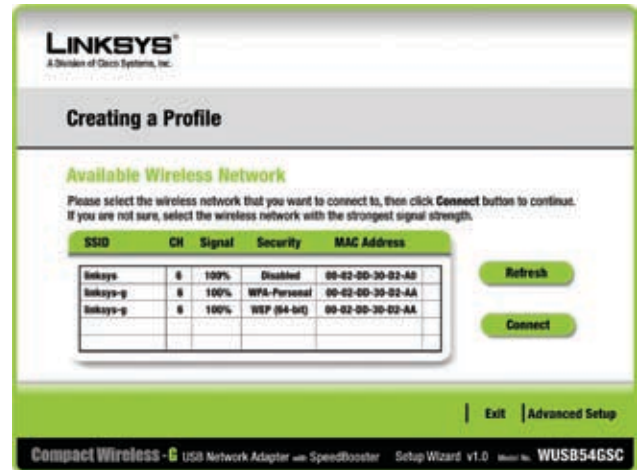
The setup for each option is described, step by step, under the appropriate heading on the following pages.

Click **Exit** to close the Setup Wizard, if you wish to set up the Adapter later.

Click **Connect to Network** to connect to your network.

## Create a Profile

The available networks for the Profile are in the table on the center of the screen by SSID.



Creating a Profile

1. If you have wireless security enabled on your network, continue to step 2. If you do not have wireless security enabled, continue to step 3.
2. If the network's wireless security is enabled, Select the wireless network you wish to connect to and click **Connect**. (If you do not see your network listed, you can click **Refresh** to see the list.) Then you will view this screen:



Click Continue

Make sure you have the security settings of your wireless network, and then click **Continue**.

Proceed to the instructions for the wireless security screen you see:

## WEP

If the network has WEP encryption enabled, then you see the *WEP Key Needed for Connection* screen.

WEP Security

**WEP** Select **64-bit** or **128-bit** encryption.

**Passphrase** Enter the network's Passphrase, so a WEP key is automatically generated. The passphrase is case-sensitive and must be 16 or fewer alphanumeric characters. It must match the passphrase of your other wireless network devices and is compatible with Linksys wireless products only. (For non-Linksys wireless products, enter the WEP key manually.)

**WEP Key 1** If you do not have the Passphrase, enter the WEP key, which must match the WEP key of your wireless network. For 64-bit encryption, enter exactly 10 hexadecimal characters ("0" to "9" and "A" to "F"). For 128-bit encryption, enter exactly 26 hexadecimal characters.

Click **Connect** and proceed to step 3.

## WPA Personal

If the network has WPA Personal security enabled, then you see the *WPA Personal Needed for Connection* screen.

WPA-Personal Security

Compact Wireless-G USB Network Adapter with SpeedBooster

**Encryption** Select the type of algorithm you want to use, **TKIP** or **AES**.

**Passphrase** Enter the network's Passphrase (Pre-shared Key) of 8-63 characters.

Click **Connect** and proceed to step 3.

## WPA2 Personal

If the network has WPA2 Personal security enabled, then you see the *WPA2 Personal Needed for Connection* screen.

WPA2-Personal Security

**Passphrase** Enter the network's Passphrase (Pre-shared Key) of 8-63 characters.

Click **Connect** and proceed to step 3.

3. After the profile installs, the *Congratulations* screen appears. Click **Finish**.



Congratulations

**Congratulations! The profile is successfully configured.**

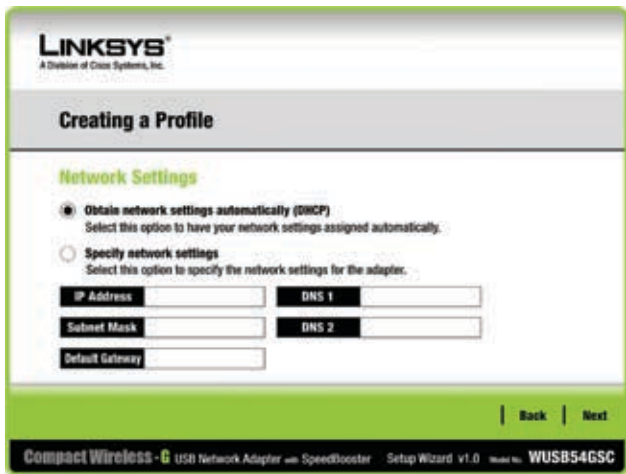
## Advanced Setup

If your network is not listed with the available networks, use Advanced Setup.



Available Wireless Networks

1. Click **Advanced Setup** on the *Available Wireless Networks* screen to set up the Adapter manually.
2. The *Network Settings* screen appears.



Wireless Network

If your network has a router or other DHCP server, select **Obtain network settings automatically (DHCP)**.

If your network does not have a DHCP server or router, select **Specify network settings**. Enter an IP Address, Subnet Mask, Default Gateway, and DNS addresses appropriate for your network. You must specify the IP Address and Subnet Mask on this screen. If you are unsure about the Default Gateway and DNS addresses, leave these fields blank.

- **IP Address** This IP Address must be unique to your network.
- **Subnet Mask** The Adapter's Subnet Mask must be the same as your wired network's Subnet Mask.

- **Default Gateway** Enter the IP address of your network's Gateway.
- **DNS 1 and DNS 2** Enter the DNS address of your wired Ethernet network.

Click **Next** to continue, or click **Back** to return to the previous screen.

3. The *Wireless Mode* screen shows a choice of two wireless modes.



Wireless Mode

- **Infrastructure Mode** Select this mode if you want to connect to a wireless router or access point.
- **Ad-Hoc Mode** Select this mode if you want to connect to another wireless device directly without using a wireless router or access point.
- **SSID** Enter a wireless network name (SSID) that must be used for all devices in your wireless network. It is case-sensitive and should be a unique name to help prevent others from entering your network.

Click **Next** to continue, or click **Back** to return to the previous screen.

4. If you chose Infrastructure Mode, go to step 5 now. If you chose Ad-Hoc Mode, the *Ad-Hoc Mode Settings* screen appears.



Ad-Hoc Mode Settings

- **Channel** Select the correct channel for your wireless network. If you are unsure about which channel to use, keep the default, **Auto**.
- **Network Mode** Select the network mode in which your wireless network will operate. In **Mixed Mode**, Wireless-B and Wireless-G devices can both operate on the network, though at a slower speed. In **G-Only Mode**, no Wireless-B devices can operate in the network.

Click **Next** to continue, or click **Back** to return to the previous screen.

5. If your wireless network does not have wireless security, select **Disabled** and then click **Next** to continue. Proceed to step 6.



Wireless Security

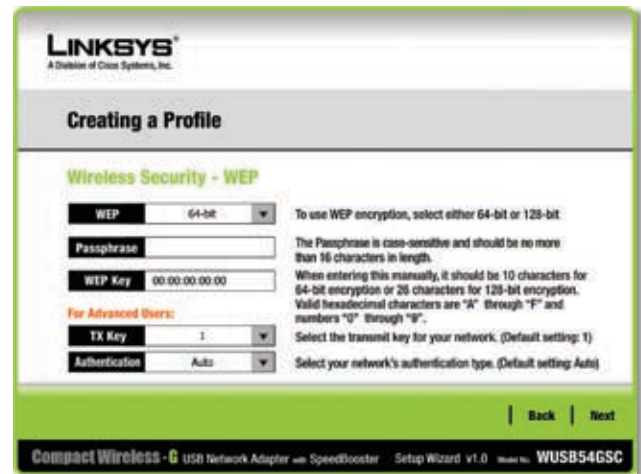
If your wireless network has wireless security, select the method of security used: WEP, WPA Personal, WPA2 Personal, WPA Enterprise, WPA2 Enterprise, or RADIUS. WEP stands for Wired Equivalent Privacy, and WPA stands for Wi-Fi Protected Access. WPA2 stands for Wi-Fi Protected Access 2. WPA is a stronger security method than WEP. WPA2 is a stronger security method

than WPA. RADIUS stands for Remote Authentication Dial-In User Service. Click **Next** to continue, or click **Back** to return to the previous screen.

Proceed to the section for your security method.

## WEP

Make sure the settings you configure match the settings of your wireless network.



WEP

**WEP** Select **64-bit** or **128-bit** encryption.

**Passphrase** Enter the network's Passphrase, so a WEP key is automatically generated. It is case-sensitive and should not be longer than 16 alphanumeric characters. This passphrase must match the passphrase of your other wireless network devices and is compatible with Linksys wireless products only. (If you have any non-Linksys wireless products, enter the WEP key manually on those products.)

**WEP Key** If you do not have the Passphrase, enter the WEP key of your wireless network. For 64-bit encryption, enter exactly 10 hexadecimal characters. For 128-bit encryption, enter exactly 26 hexadecimal characters. Valid hexadecimal characters are "0" to "9" and "A" to "F".

## Advanced Users

**TX Key** The default is **1**. If your network's wireless router or access point uses transmit key number 2, 3, or 4, select the appropriate number.

**Authentication** The default is **Open System**. For Open System authentication, the sender and the recipient do not share a WEP key for authentication. For Shared Key authentication, both the sender and the recipient share a WEP key for authentication.

Click **Next** to continue, or click **Back** to return to the previous screen.

## WPA Personal

WPA Personal offers two encryption methods, TKIP and AES, with dynamic encryption keys.

WPA Personal

**Encryption** Select **TKIP** or **AES**.

**Passphrase** Enter the network's Passphrase (Pre-shared Key) of 8-63 characters.

Click **Next** to continue, or click **Back** to return to the previous screen.

## WPA2 Personal

WPA2 Personal uses the encryption method, AES, with dynamic encryption keys.

WPA2 Personal

**Passphrase** Enter the network's Passphrase (Pre-shared Key) of 8-63 characters.

Click **Next** to continue, or click **Back** to return to the previous screen.

## WPA Enterprise

WPA Enterprise features WPA security used in coordination with a RADIUS server. (This should only be used when a RADIUS server is connected to the Router.) WPA Enterprise offers two authentication methods, EAP-TLS and PEAP, as well as two encryption methods, TKIP and AES, with dynamic encryption keys.

**Authentication** Select the authentication method your network is using, **EAP-TLS** or **PEAP**.

### EAP-TLS

WPA Enterprise - EAP-TLS

If you selected EAP-TLS, configure the following:

**Login Name** Enter the login name of your wireless network.

**Server Name** Enter the name of the authentication server (this is optional).

**Certificate** Select the certificate you installed to authenticate you on your wireless network.

**Encryption** Select the type of encryption, **TKIP** or **AES**.

Click **Next** to continue, or click **Back** to return to the previous screen.

## PEAP

The screenshot shows the 'Creating a Profile' screen for 'Wireless Security - WPA Enterprise'. The 'Authentication' dropdown is set to 'PEAP'. Below it are input fields for 'Login Name', 'Password', and 'Server Name'. The 'Certificate' dropdown is set to 'Trust Any'. The 'Inner Authen.' dropdown is set to 'EAP-MSCHAP v2'. The 'Encryption' dropdown is set to 'AES'. Instructions for each field are provided to the right. At the bottom, there are 'Back' and 'Next' buttons. The footer includes 'Compact Wireless-G USB Network Adapter with SpeedBooster Setup Wizard v1.0 Model No. WUSB54GSC'.

WPA Enterprise - PEAP

If you selected PEAP, configure the following:

**Login Name** Enter the login name of your wireless network.

**Password** Enter the password of your wireless network.

**Server Name** Enter the name of the authentication server (this is optional).

**Certificate** Select the certificate you installed to authenticate you on your wireless network. If you want to use any certificate, keep the default, **Trust Any**.

**Inner Authen.** Select the authentication method used inside the PEAP tunnel.

**Encryption** Select the type of encryption, **TKIP** or **AES**.

Click **Next** to continue, or click **Back** to return to the previous screen.

## RADIUS

RADIUS features use of a RADIUS server. (This should only be used when a RADIUS server is connected to the Router.) RADIUS offers two authentication types: EAP-TLS and PEAP.

**Authentication** Select the authentication method your network is using, **EAP-TLS** or **PEAP**.

## EAP-TLS

The screenshot shows the 'Creating a Profile' screen for 'Wireless Security - RADIUS'. The 'Authentication' dropdown is set to 'EAP-TLS'. Below it are input fields for 'Login Name', 'Server Name', and 'Certificate'. Instructions for each field are provided to the right. At the bottom, there are 'Back' and 'Next' buttons. The footer includes 'Compact Wireless-G USB Network Adapter with SpeedBooster Setup Wizard v1.0 Model No. WUSB54GSC'.

RADIUS - EAP-TLS

If you selected EAP-TLS, configure the following:

**Login Name** Enter the login name of your wireless network.

**Server Name** Enter the name of the authentication server (this is optional).

**Certificate** Select the certificate you installed to authenticate you on your wireless network.

Click **Next** to continue, or click **Back** to return to the previous screen.

## PEAP

**LINKSYS**  
A Division of Cisco Systems, Inc.

**Creating a Profile**

**Wireless Security - RADIUS**

Authentication: PEAP  
Please select the authentication method that you use to access your network.

Login Name: \_\_\_\_\_  
Enter the Login Name used for authentication.

Password: \_\_\_\_\_  
Enter the Password used for authentication.

Server Name: \_\_\_\_\_  
Enter the Server Name used for authentication. (Optional)

Certificate: Trust Any  
Please select the certificate used for authentication.

Inner Authn: EAP-MSCHAP v2  
Please select the inner authentication method used inside the PEAP tunnel.

Back Next

Compact Wireless - G USB Network Adapter with SpeedBooster Setup Wizard v1.0 Model No. WUSB54GSC

RADIUS - PEAP

If you selected PEAP, configure the following:

**Login Name** Enter the login name of your wireless network.

**Password** Enter the password of your wireless network.

**Server Name** Enter the name of the authentication server (this is optional).

**Certificate** Select the certificate you installed to authenticate you on your wireless network. If you want to use any certificate, keep the default, **Trust Any**.

**Inner Authn.** Select the authentication method used inside the PEAP tunnel.

Click **Next** to continue, or click **Back** to return to the previous screen.

6. The *Confirm New Settings* screen appears.

**LINKSYS**  
A Division of Cisco Systems, Inc.

**Confirm New Settings**

**Profile Settings**

SSID	linksys
Wireless Mode	Infrastructure
Channel	6
Network Mode	Mixed Mode
Security	WEP (128-bit)
Authentication	Auto
IP Address	192.168.1.100
Subnet Mask	255.255.255.0
Default Gateway	192.168.1.1
DNS	10.10.10.10

Exit Back Save

Compact Wireless - G USB Network Adapter with SpeedBooster Setup Wizard v1.0 Model No. WUSB54GSC

Confirm New Settings

To save the new settings, click **Save**. To edit the new settings, click **Back**. To exit Advanced Setup through the Monitor, click **Exit**.

7. The *Congratulations* screen appears. Click **Connect to Network** to implement the new settings immediately and return to the *Link Information* screen. Click **Return to Profiles** screen to keep the current settings active and return to the *Profiles* screen.



Congratulations

**Congratulations! The profile is successfully configured.**



## Appendix A: Troubleshooting

---

### ***Your computer does not recognize the Adapter.***

Make sure that the Adapter is properly inserted into the USB slot.

### ***The Adapter does not work properly.***

Remove the Adapter, and then reinsert it into the computer's USB slot.

### ***Your computer cannot communicate with the other computers linked via Ethernet in the Infrastructure configuration.***

1. Make sure that the computers are powered on.
2. Make sure that the Adapter is configured with the same Wireless Network Name (SSID) and wireless security settings as the other wireless computers in the Infrastructure configuration.



---

**WEB:** If your questions are not addressed here, refer to the Linksys website, [www.linksys.com](http://www.linksys.com)

---

## Appendix B: Windows Vista Zero Configuration

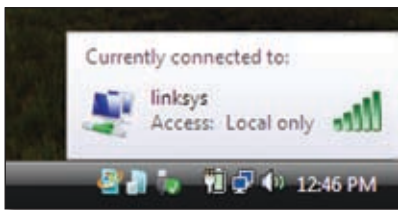
### Windows Vista Configuration

After you have installed the Adapter, the Windows Vista Wireless Network Configuration utility icon appears on your computer's system tray.



Wireless Network Configuration Utility Icon

When your mouse pointer hovers over the icon, the status information of your wireless connection appears.

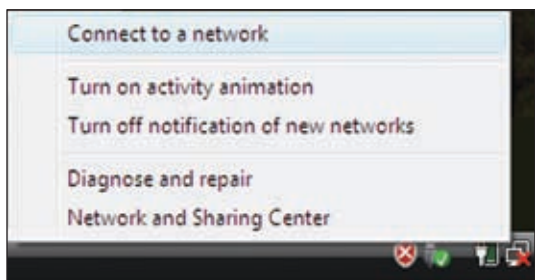


Wireless Connection Status

### New Wireless Connection

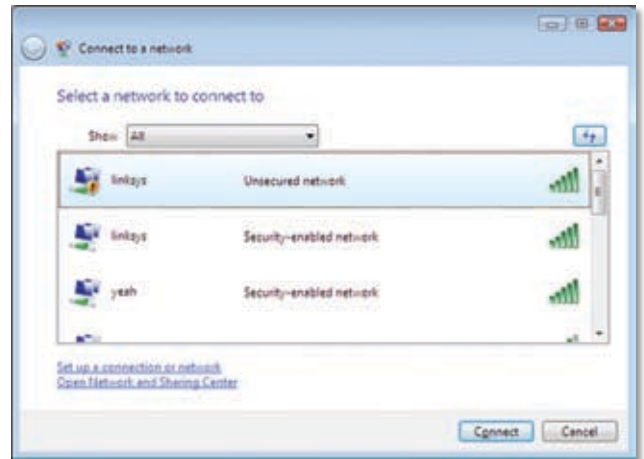
To connect to a different wireless network:

1. Right-click the Wireless Network Configuration utility icon.
2. Click **Connect to a network**.



Utility Menu

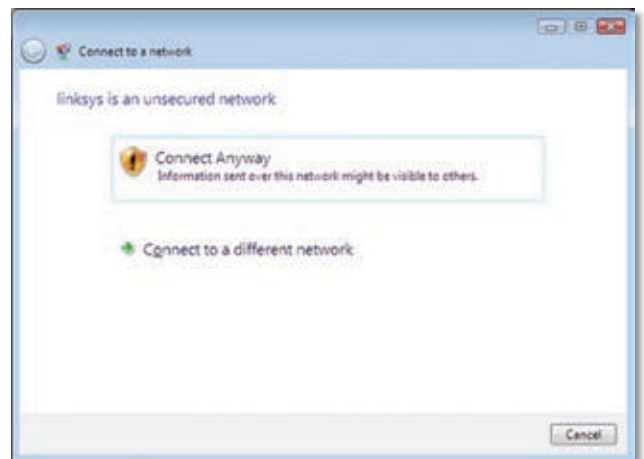
3. Select your network, and then click **Connect**.



Select Network

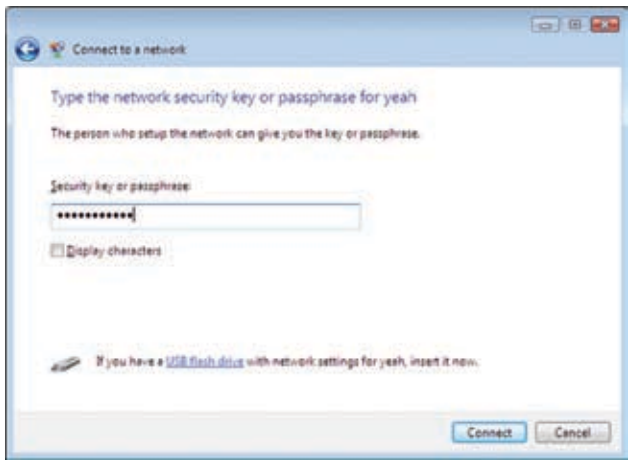
4. If your network has wireless security, go to step 5.

If your network has no wireless security, this screen appears. To connect to your unsecured network, click **Connect Anyway** and go to step 7.



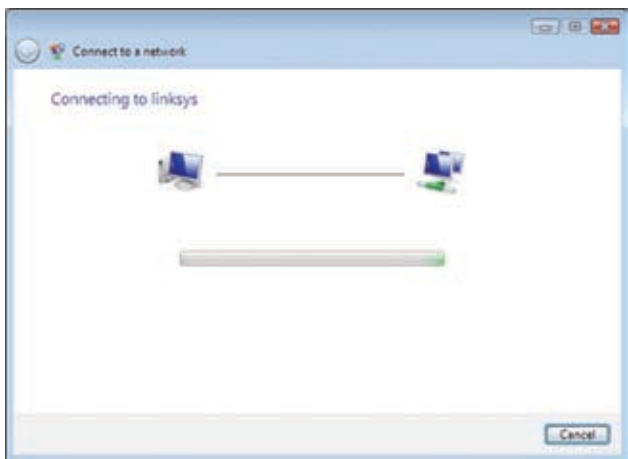
Unsecured Network

5. Enter the security key, WEP key, or passphrase (also known as a pre-shared key), depending on your type of security. Click **Connect**.



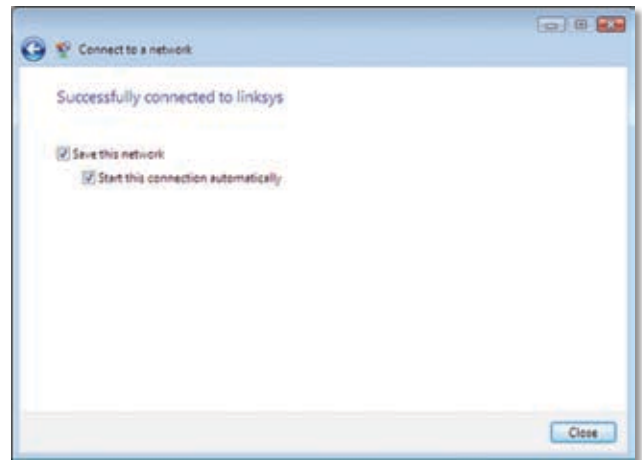
Secured Network

6. This screen appears while the Adapter connects to your network. Do not cancel, unless you want to end the installation.



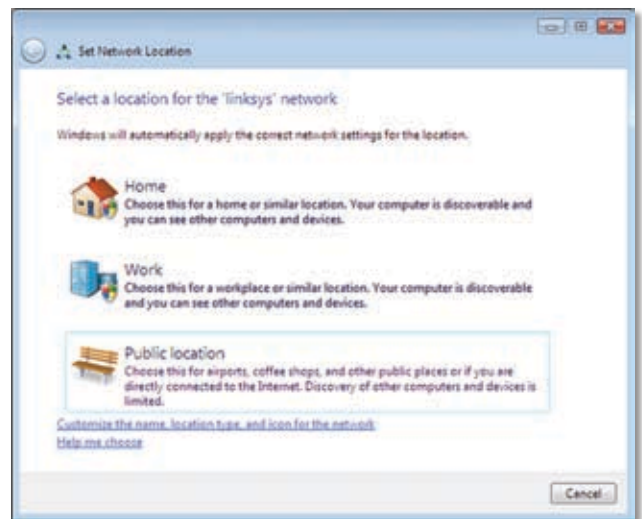
Connecting to Network

7. This screen appears when you are connected to your network. Select **Save this network**, if you want to save your settings. Click **Close**.



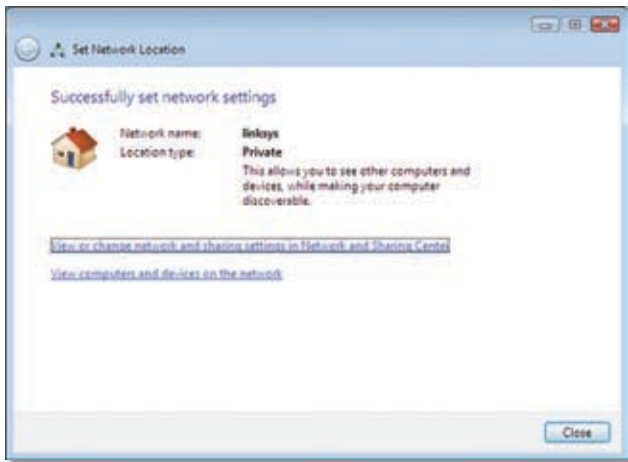
Connected to Network

8. The *Set Network Location* screen may appear to help apply the correct settings for your type of location. Select **Home**, **Work**, or **Public location**.




Select Network Location

9. This screen varies according to the selected location. Click **Close**.



Network Settings Saved



**NOTE:** For help with the Windows Vista Wireless Network Configuration utility, refer to Windows Vista Help and Support, by clicking Vista's Start button  > **Help and Support**.

**Your computer is now connected to your wireless network.**

## Appendix C: Windows XP Wireless Zero Configuration

### Windows XP Wireless Zero Configuration

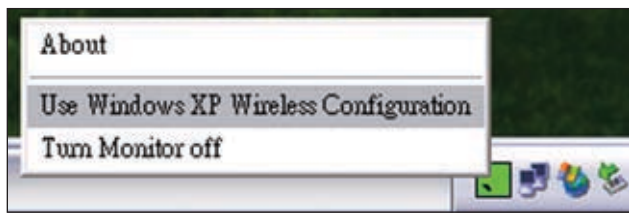
If your computer is running Windows XP, then this choice will be available. If you want to use Windows XP Wireless Zero Configuration to control the Adapter, instead of using the Wireless Network Monitor, then right-click the Wireless Network Monitor icon, and select **Use Windows XP Wireless Configuration**.



**NOTE:** If you have WPA2 wireless security, refer to Update for Windows XP (KB893357) on the microsoft.com website to be able to connect correctly.

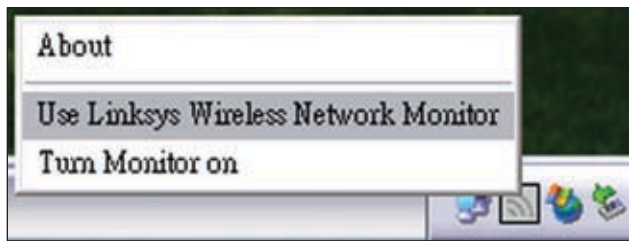


Wireless Network Monitor Icon



Use Windows XP Wireless Configuration

If you want to switch back to the Wireless Network Monitor, right-click the Wireless Network Monitor icon, and select **Use Linksys Wireless Network Monitor**.

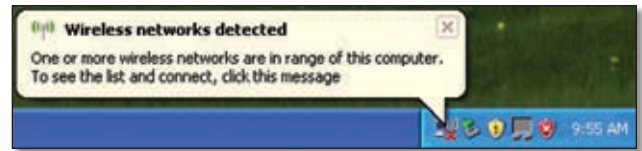


Use Linksys Wireless Network Monitor



**NOTE:** For more information on Windows XP Wireless Zero Configuration, refer to Windows Help.

1. After installing the Adapter, the Windows XP Wireless Zero Configuration icon appears in your computer's system tray. Double-click the icon.



Windows XP Wireless Zero Configuration Icon

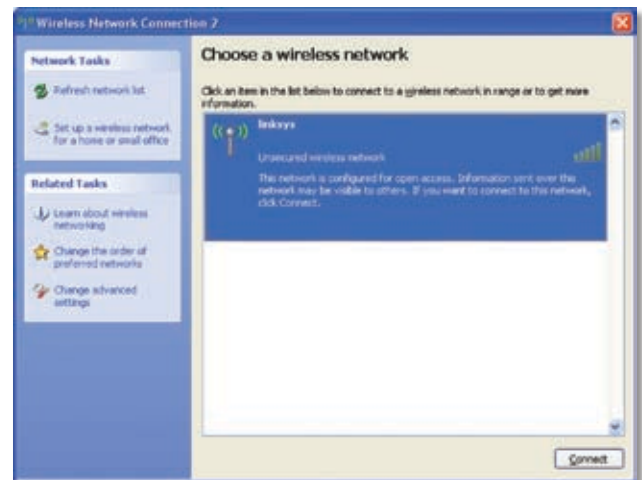
2. The screen that appears will show any available wireless network. Select the network you want. Click **Connect**.

If your network does not have wireless security enabled, go to step 3.

If your network does have wireless security enabled, go to step 4.



**NOTE:** Steps 2 and 3 are for Windows XP with Service Pack 2 installed.



Available Wireless Network

3. If your network does not have wireless security enabled, click **Connect Anyway** to connect the Adapter to your network.



No Wireless Security

4. If your network uses WEP wireless security, enter the WEP Key in the *Network Key* and *Confirm network key* fields. If your network uses WPA Personal wireless security, enter the Passphrase in the *Network Key* and *Confirm network key* fields. Click **Connect**.

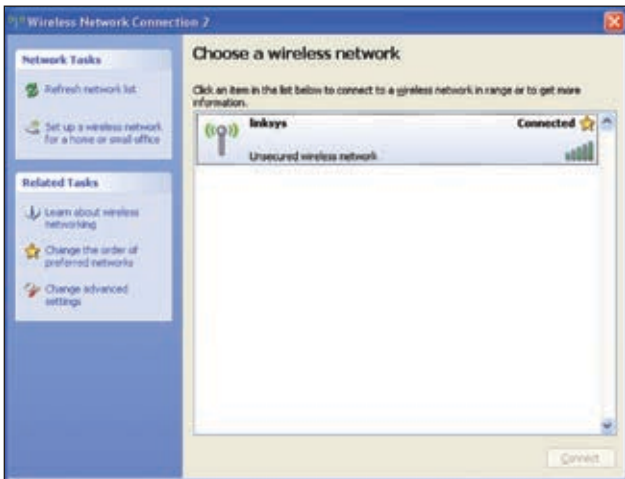


Wireless Security



**NOTE:** Windows XP Wireless Zero Configuration does not support the use of a passphrase. Enter the exact WEP key used by your wireless router or access point.

5. Your wireless network will appear as Connected when your connection is active.



Wireless Network Connection

For more information about wireless networking on a Windows XP computer, click **Start > Help > Support**. Enter the keyword **wireless** in the field provided, and press the **Enter** key.

**Your computer is now connected to your wireless network.**

## Appendix D: Specifications

---

Model	WUSB54GSC ver. 2
Standards	IEEE 802.11g, IEEE 802.11b, USB 1.1 and 2.0
Channels	802.11b / 802.11g 11 Channels (US, Canada)
LEDs	Link
Protocols	802.11b: CCK (11 Mbps), DQPSK (2 Mbps), DBPSK (1 Mbps); 802.11g: OFDM
Transmitted Power	802.11g: 13 ± / 1.5 dBm (Typical) 802.11b: 16 ± / 1.5 dBm (Typical)
Receive Sensitivity	11Mbps @ -80dBm (Typical) 54Mbps @ -65dBm (Typical)
Security features	WEP, WPA and WPA2 Encryption WEP key bits 64 Bit and 128 Bit

### Environmental

Dimensions	3.86" x 0.43" x 1.10" (98 x 11 x 28 mm)
Weight	0.5 oz (23 g)
Certification	FCC, Wi-Fi (802.11b/g)
Operating Temp.	32 to 104°F (0 to 40°C)
Storage Temp.	14 to 158°F (-10 to 70°C)
Operating Humidity	10 to 85% Noncondensing
Storage Humidity	5 to 90% Noncondensing

Specifications are subject to change without notice.

## Appendix E: Warranty Information

### Limited Warranty

Linksys warrants this Linksys hardware product against defects in materials and workmanship under normal use for the Warranty Period, which begins on the date of purchase by the original end-user purchaser and lasts for the period specified below:

- One (1) year for new product
- Ninety (90) days for refurbished product

This limited warranty is non-transferable and extends only to the original end-user purchaser. Your exclusive remedy and Linksys' entire liability under this limited warranty will be for Linksys, at its option, to (a) repair the product with new or refurbished parts, (b) replace the product with a reasonably available equivalent new or refurbished Linksys product, or (c) refund the purchase price of the product less any rebates. Any repaired or replacement products will be warranted for the remainder of the original Warranty Period or thirty (30) days, whichever is longer. All products and parts that are replaced become the property of Linksys.

### Exclusions and Limitations

This limited warranty does not apply if: (a) the product assembly seal has been removed or damaged, (b) the product has been altered or modified, except by Linksys, (c) the product damage was caused by use with non-Linksys products, (d) the product has not been installed, operated, repaired, or maintained in accordance with instructions supplied by Linksys, (e) the product has been subjected to abnormal physical or electrical stress, misuse, negligence, or accident, (f) the serial number on the Product has been altered, defaced, or removed, or (g) the product is supplied or licensed for beta, evaluation, testing or demonstration purposes for which Linksys does not charge a purchase price or license fee.

ALL SOFTWARE PROVIDED BY LINKSYS WITH THE PRODUCT, WHETHER FACTORY LOADED ON THE PRODUCT OR CONTAINED ON MEDIA ACCOMPANYING THE PRODUCT, IS PROVIDED "AS IS" WITHOUT WARRANTY OF ANY KIND. Without limiting the foregoing, Linksys does not warrant that the operation of the product or software will be uninterrupted or error free. Also, due to the continual development of new techniques for intruding upon and attacking networks, Linksys does not warrant that the product, software or any equipment, system or network on which the product or software is used will be free of vulnerability to intrusion or attack. The product may include or be bundled with third party software or

service offerings. This limited warranty shall not apply to such third party software or service offerings. This limited warranty does not guarantee any continued availability of a third party's service for which this product's use or operation may require.

TO THE EXTENT NOT PROHIBITED BY LAW, ALL IMPLIED WARRANTIES AND CONDITIONS OF MERCHANTABILITY, SATISFACTORY QUALITY OR FITNESS FOR A PARTICULAR PURPOSE ARE LIMITED TO THE DURATION OF THE WARRANTY PERIOD. ALL OTHER EXPRESS OR IMPLIED CONDITIONS, REPRESENTATIONS AND WARRANTIES, INCLUDING, BUT NOT LIMITED TO, ANY IMPLIED WARRANTY OF NON-INFRINGEMENT, ARE DISCLAIMED. Some jurisdictions do not allow limitations on how long an implied warranty lasts, so the above limitation may not apply to you. This limited warranty gives you specific legal rights, and you may also have other rights which vary by jurisdiction.

TO THE EXTENT NOT PROHIBITED BY LAW, IN NO EVENT WILL LINKSYS BE LIABLE FOR ANY LOST DATA, REVENUE OR PROFIT, OR FOR SPECIAL, INDIRECT, CONSEQUENTIAL, INCIDENTAL OR PUNITIVE DAMAGES, REGARDLESS OF THE THEORY OF LIABILITY (INCLUDING NEGLIGENCE), ARISING OUT OF OR RELATED TO THE USE OF OR INABILITY TO USE THE PRODUCT (INCLUDING ANY SOFTWARE), EVEN IF LINKSYS HAS BEEN ADVISED OF THE POSSIBILITY OF SUCH DAMAGES. IN NO EVENT WILL LINKSYS' LIABILITY EXCEED THE AMOUNT PAID BY YOU FOR THE PRODUCT. The foregoing limitations will apply even if any warranty or remedy provided under this limited warranty fails of its essential purpose. Some jurisdictions do not allow the exclusion or limitation of incidental or consequential damages, so the above limitation or exclusion may not apply to you.

### Obtaining Warranty Service

If you have a question about your product or experience a problem with it, please go to [www.linksys.com/support](http://www.linksys.com/support) where you will find a variety of online support tools and information to assist you with your product. If the product proves defective during the Warranty Period, contact Linksys Technical Support for instructions on how to obtain warranty service. The telephone number for Linksys Technical Support in your area can be found in the product User Guide and at [www.linksys.com](http://www.linksys.com). Have your product serial number and proof of purchase on hand when calling. A DATED PROOF OF ORIGINAL PURCHASE IS REQUIRED TO PROCESS WARRANTY CLAIMS. If you are requested to return your product, you will be given a Return Materials Authorization (RMA) number. You are responsible for properly packaging and shipping your product to Linksys at your cost and risk. You must include the RMA number and a copy of your dated proof of original purchase when returning your product. Products received without a RMA number and dated proof of original purchase will be



rejected. Do not include any other items with the product you are returning to Linksys. Defective product covered by this limited warranty will be repaired or replaced and returned to you without charge. Customers outside of the United States of America and Canada are responsible for all shipping and handling charges, custom duties, VAT and other associated taxes and charges. Repairs or replacements not covered under this limited warranty will be subject to charge at Linksys' then-current rates.

## Technical Support

This limited warranty is neither a service nor a support contract. Information about Linksys' current technical support offerings and policies (including any fees for support services) can be found at:

**[www.linksys.com/support](http://www.linksys.com/support)**.

This limited warranty is governed by the laws of the jurisdiction in which the Product was purchased by you.

Please direct all inquiries to: Linksys, P.O. Box 18558, Irvine, CA 92623.

## Appendix F: Regulatory Information

### FCC Statement

This device complies with Part 15 of the FCC Rules. Operation is subject to the following two conditions: (1) This device may not cause harmful interference, and (2) this device must accept any interference received, including interference that may cause undesired operation.

This product has been tested and complies with the specifications for a Class B digital device, pursuant to Part 15 of the FCC Rules. These limits are designed to provide reasonable protection against harmful interference in a residential installation. This equipment generates, uses, and can radiate radio frequency energy and, if not installed and used according to the instructions, may cause harmful interference to radio communications. However, there is no guarantee that interference will not occur in a particular installation. If this equipment does cause harmful interference to radio or television reception, which is found by turning the equipment off and on, the user is encouraged to try to correct the interference by one or more of the following measures:

- Reorient or relocate the receiving antenna
- Increase the separation between the equipment or devices
- Connect the equipment to an outlet other than the receiver's
- Consult a dealer or an experienced radio/TV technician for assistance

**FCC Caution:** Any changes or modifications not expressly approved by the party responsible for compliance could void the user's authority to operate this equipment.

SAR compliance has been established in typical laptop computer(s) with USB slot, and product could be used in typical laptop computer with USB slot. Other application like handheld PC or similar device has not been verified and may not compliance with related RF exposure rule and such use shall be prohibited.

### FCC Radiation Exposure Statement

This equipment complies with FCC radiation exposure limits set forth for an uncontrolled environment. This equipment should be installed and operated with minimum distance 20cm between the radiator and your body.

This transmitter must not be co-located or operating in conjunction with any other antenna or transmitter. IEEE 802.11b or 802.11g operation of this product in the USA is firmware-limited to channels 1 through 11.

### Safety Notices

- **Caution:** To reduce the risk of fire, use only No.26 AWG or larger telecommunication line cord.
- Do not use this product near water, for example, in a wet basement or near a swimming pool.
- Avoid using this product during an electrical storm. There may be a remote risk of electric shock from lightning.



**WARNING:** This product contains lead, known to the State of California to cause cancer, and birth defects or other reproductive harm. Wash hands after handling.

### Industry Canada Statement

This Class B digital apparatus complies with Canadian ICES-003 and RSS210.

Operation is subject to the following two conditions:

1. This device may not cause interference and
2. This device must accept any interference, including interference that may cause undesired operation of the device.

### Industry Canada Radiation Exposure Statement:

This equipment complies with IC radiation exposure limits set forth for an uncontrolled environment. End users must follow the specific operating instructions for satisfying RF exposure compliance. To maintain compliance with IC RF exposure compliance requirements, please follow operation instruction as documented in this manual.

This transmitter must not be co-located or operating in conjunction with any other antenna or transmitter.

## Avis d'Industrie Canada

Cet appareil numérique de la classe B est conforme aux normes NMB-003 et RSS210 du Canada.

L'utilisation de ce dispositif est autorisée seulement aux conditions suivantes :

1. il ne doit pas produire de brouillage et
2. il doit accepter tout brouillage radioélectrique reçu, même si ce brouillage est susceptible de compromettre le fonctionnement du dispositif.

## Avis d'Industrie Canada concernant l'exposition aux radiofréquences :

Ce matériel est conforme aux limites établies par IC en matière d'exposition aux radiofréquences dans un environnement non contrôlé. L'opérateur doit suivre les instructions d'utilisation décrites dans le présent manuel afin de maintenir la conformité de l'installation.

L'émetteur ne doit pas être placé près d'une autre antenne ou d'un autre émetteur, ou fonctionner avec une autre antenne ou un autre émetteur.

## Wireless Disclaimer

The maximum performance for wireless is derived from IEEE Standard 802.11 specifications. Actual performance can vary, including lower wireless network capacity, data throughput rate, range and coverage. Performance depends on many factors, conditions and variables, including distance from the access point, volume of network traffic, building materials and construction, operating system used, mix of wireless products used, interference and other adverse conditions.

## Avis de non-responsabilité concernant les appareils sans fil


Les performances maximales pour les réseaux sans fil sont tirées des spécifications de la norme IEEE 802.11. Les performances réelles peuvent varier, notamment en fonction de la capacité du réseau sans fil, du débit de la transmission de données, de la portée et de la couverture. Les performances dépendent de facteurs, conditions et variables multiples, en particulier de la distance par rapport au point d'accès, du volume du trafic réseau, des matériaux utilisés dans le bâtiment et du type de construction, du système d'exploitation et de la combinaison de produits sans fil utilisés, des interférences et de toute autre condition défavorable.

## User Information for Consumer Products Covered by EU Directive 2002/96/EC on Waste Electric and Electronic Equipment (WEEE)


This document contains important information for users with regards to the proper disposal and recycling of Linksys products. Consumers are required to comply with this notice for all electronic products bearing the following symbol:




### English - Environmental Information for Customers in the European Union

European Directive 2002/96/EC requires that the equipment bearing this symbol  on the product and/or its packaging must not be disposed of with unsorted municipal waste. The symbol indicates that this product should be disposed of separately from regular household waste streams. It is your responsibility to dispose of this and other electric and electronic equipment via designated collection facilities appointed by the government or local authorities. Correct disposal and recycling will help prevent potential negative consequences to the environment and human health. For more detailed information about the disposal of your old equipment, please contact your local authorities, waste disposal service, or the shop where you purchased the product.


### Български (Bulgarian) - Информация относно опазването на околната среда за потребители в Европейския съюз

Европейска директива 2002/96/EC изисква уредите, носещи този символ  върху изделието и/или опаковката му, да не се изхвърлят с несортирани битови отпадъци. Символът обозначава, че изделието трябва да се изхвърля отделно от сметосъбирането на обикновените битови отпадъци. Вашата отговорност е този и другите електрически и електронни уреди да се изхвърлят в предварително определени от държавните или общински органи специализирани пунктове за събиране. Правилното изхвърляне и рециклиране ще спомогнат да се предотвратят евентуални вредни за околната среда и здравето на населението последствия. За по-подробна информация относно изхвърлянето на вашите стари уреди се обърнете към местните власти, службите за сметосъбиране или магазина, от който сте закупили уреда.


### Čeština (Czech) - Informace o ochraně životního prostředí pro zákazníky v zemích Evropské unie

Evropská směrnice 2002/96/ES zakazuje, aby zařízení označené tímto symbolem  na produktu anebo na obalu bylo likvidováno s netříděným komunálním odpadem. Tento symbol udává, že daný produkt musí být likvidován odděleně od běžného komunálního odpadu. Odpovídáte za likvidaci tohoto produktu a dalších elektrických a elektronických zařízení prostřednictvím určených sběrných míst stanovených vládou nebo místními úřady. Správná likvidace a recyklace pomáhá předcházet potenciálním negativním dopadům na životní prostředí a lidské zdraví. Podrobnější informace o likvidaci starého vybavení si laskavě vyžádejte od místních úřadů, podniku zabývajícího se likvidací komunálních odpadů nebo obchodu, kde jste produkt zakoupili.


### Dansk (Danish) - Miljøinformation for kunder i EU

EU-direktiv 2002/96/EF kræver, at udstyr der bærer dette symbol  på produktet og/eller emballagen ikke må bortskaffes som usorteret kommunalt affald. Symbolet betyder, at dette produkt skal bortskaffes adskilt fra det almindelige husholdningsaffald. Det er dit ansvar at bortskaffe dette og andet elektrisk og elektronisk udstyr via bestemte indsamlingssteder udpeget af staten eller de lokale myndigheder. Korrekt bortskaffelse og genvinding vil hjælpe med til at undgå mulige skader for miljøet og menneskers sundhed. Kontakt venligst de lokale myndigheder, renovationstjenesten eller den butik, hvor du har købt produktet, angående mere detaljeret information om bortskaffelse af dit gamle udstyr.


### Deutsch (German) - Umweltinformation für Kunden innerhalb der Europäischen Union

Die Europäische Richtlinie 2002/96/EC verlangt, dass technische Ausrüstung, die direkt am Gerät und/oder an der Verpackung mit diesem Symbol versehen ist , nicht zusammen mit unsortiertem Gemeindeabfall entsorgt werden darf. Das Symbol weist darauf hin, dass das Produkt von regulärem Haushaltsmüll getrennt entsorgt werden sollte. Es liegt in Ihrer Verantwortung, dieses Gerät und andere elektrische und elektronische Geräte über die dafür zuständigen und von der Regierung oder örtlichen Behörden dazu bestimmten Sammelstellen zu entsorgen. Ordnungsgemäßes Entsorgen und Recyceln trägt dazu bei, potentielle negative Folgen für Umwelt und die menschliche Gesundheit zu vermeiden. Wenn Sie weitere Informationen zur Entsorgung Ihrer Altgeräte benötigen, wenden Sie sich bitte an die örtlichen Behörden oder städtischen Entsorgungsdienste oder an den Händler, bei dem Sie das Produkt erworben haben.

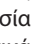
### **Eesti (Estonian) - Keskkonnaalane informatsioon Euroopa Liidus asuvatele klientidele**

Euroopa Liidu direktiivi 2002/96/EÜ nõuete kohaselt on seadmeid, millel on tootel või pakendil käesolev sümbol , keelatud kõrvaldada koos sorteerimata olmejäätmetega. See sümbol näitab, et toode tuleks kõrvaldada eraldi tavalistest olmejäätmevoogudest. Olete kohustatud kõrvaldama käesoleva ja ka muud elektri- ja elektroonikaseadmed riigi või kohalike ametiasutuste poolt ette nähtud kogumispunktide kaudu. Seadmete korrektne kõrvaldamine ja ringlussevõtt aitab vältida võimalikke negatiivseid tagajärgi keskkonnale ning inimeste tervisele. Vanade seadmete kõrvaldamise kohta täpsema informatsiooni saamiseks võtke palun ühendust kohalike ametiasutustega, jäätmekäitlusfirmaga või kauplusega, kust te toote ostsite.

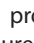
### **Español (Spanish) - Información medioambiental para clientes de la Unión Europea**

La Directiva 2002/96/CE de la UE exige que los equipos que lleven este símbolo , en el propio aparato y/o en su embalaje no deben eliminarse junto con otros residuos urbanos no seleccionados. El símbolo indica que el producto en cuestión debe separarse de los residuos domésticos convencionales con vistas a su eliminación. Es responsabilidad suya desechar este y cualesquiera otros aparatos eléctricos y electrónicos a través de los puntos de recogida que ponen a su disposición el gobierno y las autoridades locales. Al desechar y reciclar correctamente estos aparatos estará contribuyendo a evitar posibles consecuencias negativas para el medio ambiente y la salud de las personas. Si desea obtener información más detallada sobre la eliminación segura de su aparato usado, consulte a las autoridades locales, al servicio de recogida y eliminación de residuos de su zona o pregunte en la tienda donde adquirió el producto.

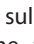
### **Ελληνικά (Greek) - Στοιχεία περιβαλλοντικής προστασίας για πελάτες εντός της Ευρωπαϊκής Ένωσης**

Η Κοινοτική Οδηγία 2002/96/ΕΚ απαιτεί ότι ο εξοπλισμός ο οποίος φέρει αυτό το σύμβολο , στο προϊόν και/ή στη συσκευασία του δεν πρέπει να απορρίπτεται μαζί με τα μικτά κοινотικά απορρίμματα. Το σύμβολο υποδεικνύει ότι αυτό το προϊόν θα πρέπει να απορρίπτεται ξεχωριστά από τα συνήθη οικιακά απορρίμματα. Είστε υπεύθυνος για την απόρριψη του παρόντος και άλλου ηλεκτρικού και ηλεκτρονικού εξοπλισμού μέσω των καθορισμένων εγκαταστάσεων συγκέντρωσης απορριμμάτων οι οποίες παρέχονται από το κράτος ή τις αρμόδιες τοπικές αρχές. Η σωστή απόρριψη και ανακύκλωση συμβάλλει στην πρόληψη πιθανών αρνητικών συνεπειών για το περιβάλλον και την υγεία. Για περισσότερες πληροφορίες σχετικά με την απόρριψη του παλιού σας εξοπλισμού, παρακαλώ επικοινωνήστε με τις τοπικές αρχές, τις υπηρεσίες απόρριψης ή το κατάστημα από το οποίο αγοράσατε το προϊόν.

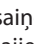
### **Français (French) - Informations environnementales pour les clients de l'Union européenne**

La directive européenne 2002/96/CE exige que l'équipement sur lequel est apposé ce symbole , sur le produit et/ou son emballage ne soit pas jeté avec les autres ordures ménagères. Ce symbole indique que le produit doit être éliminé dans un circuit distinct de celui pour les déchets des ménages. Il est de votre responsabilité de jeter ce matériel ainsi que tout autre matériel électrique ou électronique par les moyens de collecte indiqués par le gouvernement et les pouvoirs publics des collectivités territoriales. L'élimination et le recyclage en bonne et due forme ont pour but de lutter contre l'impact néfaste potentiel de ce type de produits sur l'environnement et la santé publique. Pour plus d'informations sur le mode d'élimination de votre ancien équipement, veuillez prendre contact avec les pouvoirs publics locaux, le service de traitement des déchets, ou l'endroit où vous avez acheté le produit.


### **Italiano (Italian) - Informazioni relative all'ambiente per i clienti residenti nell'Unione Europea**

La direttiva europea 2002/96/EC richiede che le apparecchiature contrassegnate con questo simbolo , sul prodotto e/o sull'imballaggio non siano smaltite insieme ai rifiuti urbani non differenziati. Il simbolo indica che questo prodotto non deve essere smaltito insieme ai normali rifiuti domestici. È responsabilità del proprietario smaltire sia questi prodotti sia le altre apparecchiature elettriche ed elettroniche mediante le specifiche strutture di raccolta indicate dal governo o dagli enti pubblici locali. Il corretto smaltimento ed il riciclaggio aiuteranno a prevenire conseguenze potenzialmente negative per l'ambiente e per la salute dell'essere umano. Per ricevere informazioni più dettagliate circa lo smaltimento delle vecchie apparecchiature in Vostro possesso, Vi invitiamo a contattare gli enti pubblici di competenza, il servizio di smaltimento rifiuti o il negozio nel quale avete acquistato il prodotto.

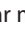
### **Latviešu valoda (Latvian) - Ekoloģiska informācija klientiem Eiropas Savienības jurisdikcijā**

Direktīvā 2002/96/EK ir prasība, ka aprīkojumu, kam pievienota zīme , uz paša izstrādājuma vai uz tā iesaiņojuma, nedrīkst izmest nešķīrotā veidā kopā ar komunālajiem atkritumiem (tiem, ko rada vietēji iedzīvotāji un uzņēmumi). Šī zīme nozīmē to, ka šī ierīce ir jāizmet atkritumos tā, lai tā nenonāktu kopā ar parastiem mājsaimniecības atkritumiem. Jūsu pienākums ir šo un citas elektriskas un elektroniskas ierīces izmest atkritumos, izmantojot īpašus atkritumu savākšanas veidus un līdzekļus, ko nodrošina valsts un pašvaldību iestādes. Ja izmešana atkritumos na pārstrāde tiek veikta pareizi, tad mazinās iespējamais kaitējums dabai un cilvēku veselībai. Sīkākas ziņas par novecojuša aprīkojuma izmešanu atkritumos jūs varat saņemt vietējā pašvaldībā, atkritumu savākšanas dienestā, kā arī veikalā, kur iegādājāties šo izstrādājumu.


### Lietuvškai (Lithuanian) - Aplinkosaugos informacija, skirta Europos Sąjungos vartotojams

Europos direktyva 2002/96/EC numato, kad įrangos, kuri ir  kurios pakuotė yra pažymėta šiuo simboliu (įveskite simbolį), negalima šalinti kartu su nerūšiuotomis komunalinėmis atliekomis. Šis simbolis rodo, kad gaminį reikia šalinti atskirai nuo bendro buitinių atliekų srauto. Jūs privalote užtikrinti, kad ši ir kita elektros ar elektroninė įranga būtų šalinama per tam tikras nacionalinės ar vietinės valdžios nustatytas atliekų rinkimo sistemas. Tinkamai šalinant ir perdirbant atliekas, bus išvengta galimos žalos aplinkai ir žmonių sveikatai. Daugiau informacijos apie jūsų senos įrangos šalinimą gali pateikti vietinės valdžios institucijos, atliekų šalinimo tarnybos arba parduotuvės, kuriose įsigijote tą gaminį.


### Malti (Maltese) - Informazzjoni Ambjentali għal Kliġenti fl-Unjoni Ewropea

Id-Direttiva Ewropea 2002/96/KE titlob li t-tagħmir li jkun fi h is-simbolu  fuq il-prodott u/jew fuq l-ippakkjar ma jistax jintrema ma' skart muniċipali li ma għex isseparat. Is-simbolu jindika li dan il-prodott għandu jintrema separatament minn ma' l-iskart domestiku regolari. Hija responsabbiltà tiegħek li tarmi dan it-tagħmir u kull tagħmir ieħor ta' l-elettriku u elettroniku permezz ta' faċilitajiet ta' għbir appuntati apposta mill-gvern jew mill-awtoritajiet lokali. Ir-rimi b'mod korrett u r-riċiklaġġ għin jipprevjeni konsegwenzi negattivi potenzjali għall-ambjent u għas-saħħa tal-bniedem. Għal aktar informazzjoni dettaljata dwar ir-rimi tat-tagħmir antik tiegħek, jekk jogħġbok ikkuntattja lill-awtoritajiet lokali tiegħek, is-servizzi għar-rimi ta' l-iskart, jew il-ħanut minn fejn xtrajt il-prodott.


### Magyar (Hungarian) - Környezetvédelmi információ az európai uniós vásárlók számára

A 2002/96/EC számú európai uniós irányelv megkívánja, hogy azokat a termékeket, amelyeken, és/vagy amelyek csomagolásán az alábbi címke  megjelenik, tilos a többi szelektálatlan lakossági hulladékkal együtt kidobni. A címke azt jelöli, hogy az adott termék kidobásakor a szokványos háztartási hulladékelszállítási rendszertől elkülönített eljárást kell alkalmazni. Az Ön felelőssége, hogy ezt, és más elektromos és elektronikus berendezéseit a kormányzati vagy a helyi hatóságok által kijelölt gyűjtőredszereken keresztül számolja fel. A megfelelő hulladékfeldolgozás segít a környezetre és az emberi egészségre potenciálisan ártalmas negatív hatások megelőzésében. Ha elavult berendezéseinek felszámolásához további részletes információra van szüksége, kérjük, lépjen kapcsolatba a helyi hatóságokkal, a hulladékfeldolgozási szolgálattal, vagy azzal üzlettel, ahol a terméket vásárolta.


### Nederlands (Dutch) - Milieu-informatie voor klanten in de Europese Unie

De Europese Richtlijn 2002/96/EC schrijft voor dat apparatuur die is voorzien van dit symbool  op het product of de verpakking, niet mag worden ingezameld met niet-gescheiden huishoudelijk afval. Dit symbool geeft aan dat het product apart moet worden ingezameld. U bent zelf verantwoordelijk voor de vernietiging van deze en andere elektrische en elektronische apparatuur via de daarvoor door de landelijke of plaatselijke overheid aangewezen inzamelingskanalen. De juiste vernietiging en recycling van deze apparatuur voorkomt mogelijke negatieve gevolgen voor het milieu en de gezondheid. Voor meer informatie over het vernietigen van uw oude apparatuur neemt u contact op met de plaatselijke autoriteiten of afvalverwerkingsdienst, of met de winkel waar u het product hebt aangeschaft.


### Norsk (Norwegian) - Miljøinformasjon for kunder i EU

EU-direktiv 2002/96/EF krever at utstyr med følgende symbol  avbildet på produktet og/eller pakningen, ikke må kastes sammen med usortert avfall. Symbolet indikerer at dette produktet skal håndteres atskilt fra ordinær avfallsinnsamling for husholdningsavfall. Det er ditt ansvar å kvitte deg med dette produktet og annet elektrisk og elektronisk avfall via egne innsamlingsordninger slik myndighetene eller kommunene bestemmer. Korrekt avfallshåndtering og gjenvinning vil være med på å forhindre mulige negative konsekvenser for miljø og helse. For nærmere informasjon om håndtering av det kasserte utstyret ditt, kan du ta kontakt med kommunen, en innsamlingsstasjon for avfall eller butikken der du kjøpte produktet.


### Polski (Polish) - Informacja dla klientów w Unii Europejskiej o przepisach dotyczących ochrony środowiska

Dyrektywa Europejska 2002/96/EC wymaga, aby sprzęt oznaczony symbolem  znajdującym się na produkcie i/lub jego opakowaniu nie był wyrzucany razem z innymi niesortowanymi odpadami komunalnymi. Symbol ten wskazuje, że produkt nie powinien być usuwany razem ze zwykłymi odpadami z gospodarstw domowych. Na Państwu spoczywa obowiązek wyrzucania tego i innych urządzeń elektrycznych oraz elektronicznych w punktach odbioru wyznaczonych przez władze krajowe lub lokalne. Pozbywanie się sprzętu we właściwy sposób i jego recykling pomogą zapobiec potencjalnie negatywnym konsekwencjom dla środowiska i zdrowia ludzkiego. W celu uzyskania szczegółowych informacji o usuwaniu starego sprzętu, prosimy zwrócić się do lokalnych władz, służb oczyszczania miasta lub sklepu, w którym produkt został nabyty.


### Português (Portuguese) - Informação ambiental para clientes da União Europeia

A Directiva Europeia 2002/96/CE exige que o equipamento que exibe este símbolo  no produto e/ou na sua embalagem não seja eliminado junto com os resíduos municipais não separados. O símbolo indica que este produto deve ser eliminado separadamente dos resíduos domésticos regulares. É da sua responsabilidade eliminar este e qualquer outro equipamento eléctrico e electrónico através das instalações de recolha designadas pelas autoridades governamentais ou locais. A eliminação e reciclagem correctas ajudarão a prevenir as consequências negativas para o ambiente e para a saúde humana. Para obter informações mais detalhadas sobre a forma de eliminar o seu equipamento antigo, contacte as autoridades locais, os serviços de eliminação de resíduos ou o estabelecimento comercial onde adquiriu o produto.


### Română (Romanian) - Informații de mediu pentru clienții din Uniunea Europeană

Directiva europeană 2002/96/CE impune ca echipamentele care prezintă acest simbol  pe produs și/sau pe ambalajul acestuia să nu fie casate împreună cu gunoiul menajer municipal. Simbolul indică faptul că acest produs trebuie să fie casat separat de gunoiul menajer obișnuit. Este responsabilitatea dvs. să cașiți acest produs și alte echipamente electrice și electronice prin intermediul unităților de colectare special desemnate de guvern sau de autoritățile locale. Casarea și reciclarea corecte vor ajuta la prevenirea potențialelor consecințe negative asupra sănătății mediului și a oamenilor. Pentru mai multe informații detaliate cu privire la casarea acestui echipament vechi, contactați autoritățile locale, serviciul de salubritate sau magazinul de la care ați achiziționat produsul.


### Slovenčina (Slovak) - Informácie o ochrane životného prostredia pre zákazníkov v Európskej únii

Podľa európskej smernice 2002/96/ES zariadenie s týmto symbolom  na produkte a/alebo jeho balení nesmie byť likvidované spolu s netriedeným komunálnym odpadom. Symbol znamená, že produkt by sa mal likvidovať oddelene od bežného odpadu z domácností. Je vašou povinnosťou likvidovať toto i ostatné elektrické a elektronické zariadenia prostredníctvom špecializovaných zberných zariadení určených vládou alebo miestnymi orgánmi. Správna likvidácia a recyklácia pomôže zabrániť prípadným negatívnym dopadom na životné prostredie a zdravie ľudí. Ak máte záujem o podrobnejšie informácie o likvidácii starého zariadenia, obráťte sa, prosím, na miestne orgány, organizácie zaoberajúce sa likvidáciou odpadov alebo obchod, v ktorom ste si produkt zakúpili.


### Slovenčina (Slovene) - Okoljske informacije za stranke v Evropski uniji

Evropska direktiva 2002/96/EC prepoveduje odlaganje opreme, označene s tem simbolom  – na izdelku in/ali na embalaži – med običajne, nerazvrščene odpadke. Ta simbol opozarja, da je treba izdelek odvreči ločeno od preostalih gospodinjskih odpadkov. Vaša odgovornost je, da to in preostalo električno in elektronsko opremo odnesete na posebna zbirališča, ki jih določijo državne ustanove ali lokalna uprava. S pravilnim odlaganjem in recikliranjem boste preprečili morebitne škodljive vplive na okolje in zdravje ljudi. Če želite izvedeti več o odlaganju stare opreme, se obrnite na lokalno upravo, odpad ali trgovino, kjer ste izdelek kupili.

### Suomi (Finnish) - Ympäristöä koskevia tietoja EU-alueen asiakkaille

EU-direktiivi 2002/96/EY edellyttää, että jos laitteistossa on tämä symboli  itse tuotteessa ja/tai sen pakkauksessa, laitteistoa ei saa hävittää lajittelemattoman yhdyskuntajätteen mukana. Symboli merkitsee sitä, että tämä tuote on hävitettävä erillään tavallisesta kotitalousjätteestä. Sinun vastuullasi on hävittää tämä elektroniikkatuote ja muut vastaavat elektroniikkatuotteet viemällä tuote tai tuotteet viranomaisten määräämään keräyspisteeseen. Laitteiston oikea hävittäminen estää mahdolliset kielteiset vaikutukset ympäristöön ja ihmisten terveyteen. Lisätietoja vanhan laitteiston oikeasta hävitystavasta saa paikallisilta viranomaisilta, jätteenhävityspalvelusta tai siitä myymälästä, josta ostit tuotteen.

### Svenska (Swedish) - Miljöinformation för kunder i Europeiska unionen

Det europeiska direktivet 2002/96/EC kräver att utrustning med denna symbol  på produkten och/eller förpackningen inte får kastas med osorterat kommunalt avfall. Symbolen visar att denna produkt bör kastas efter att den avskiljts från vanligt hushållsavfall. Det faller på ditt ansvar att kasta denna och annan elektrisk och elektronisk utrustning på fastställda samlingsplatser utsedda av regeringen eller lokala myndigheter. Korrekt kassering och återvinning skyddar mot eventuella negativa konsekvenser för miljön och personhälsa. För mer detaljerad information om kassering av din gamla utrustning kontaktar du dina lokala myndigheter, avfallshanteringen eller butiken där du köpte produkten.



**WEB:** For additional information, please visit [www.linksys.com](http://www.linksys.com)

# Appendix G: Software License Agreement

## Software in Linksys Products

This product from Cisco-Linksys LLC or from one of its affiliates Cisco Systems-Linksys (Asia) Pte Ltd. or Cisco-Linksys K.K. ("Linksys") contains software (including firmware) originating from Linksys and its suppliers and may also contain software from the open source community. Any software originating from Linksys and its suppliers is licensed under the Linksys Software License Agreement contained at Schedule 1 below. You may also be prompted to review and accept that Linksys Software License Agreement upon installation of the software.

Any software from the open source community is licensed under the specific license terms applicable to that software made available by Linksys at [www.linksys.com/gpl](http://www.linksys.com/gpl) or as provided for in Schedules 2 and 3 below.

Where such specific license terms entitle you to the source code of such software, that source code is upon request available at cost from Linksys for at least three years from the purchase date of this product and may also be available for download from [www.linksys.com/gpl](http://www.linksys.com/gpl). For detailed license terms and additional information on open source software in Linksys products please look at the Linksys public web site at: [www.linksys.com/gpl/](http://www.linksys.com/gpl/) or Schedule 2 below as applicable.

BY DOWNLOADING OR INSTALLING THE SOFTWARE, OR USING THE PRODUCT CONTAINING THE SOFTWARE, YOU ARE CONSENTING TO BE BOUND BY THE SOFTWARE LICENSE AGREEMENTS BELOW. IF YOU DO NOT AGREE TO ALL OF THESE TERMS, THEN YOU MAY NOT DOWNLOAD, INSTALL OR USE THE SOFTWARE. YOU MAY RETURN UNUSED SOFTWARE (OR, IF THE SOFTWARE IS SUPPLIED AS PART OF ANOTHER PRODUCT, THE UNUSED PRODUCT) FOR A FULL REFUND UP TO 30 DAYS AFTER ORIGINAL PURCHASE, SUBJECT TO THE RETURN PROCESS AND POLICIES OF THE PARTY FROM WHICH YOU PURCHASED SUCH PRODUCT OR SOFTWARE.

## Software Licenses

The software Licenses applicable to software from Linksys are made available at the Linksys public web site at: [www.linksys.com](http://www.linksys.com) and [www.linksys.com/gpl/](http://www.linksys.com/gpl/) respectively. For your convenience of reference, a copy of the Linksys Software License Agreement and the main open source code licenses used by Linksys in its products are contained in the Schedules below.

## Schedule 1 - Linksys Software License Agreement

THIS LICENSE AGREEMENT IS BETWEEN YOU AND CISCO-LINKSYS LLC OR ONE OF ITS AFFILIATES CISCO SYSTEMS-LINKSYS (ASIA) PTE LTD. OR CISCO-LINKSYS K.K. ("LINKSYS") LICENSING THE SOFTWARE INSTEAD OF CISCO-LINKSYS LLC. BY DOWNLOADING OR INSTALLING THE SOFTWARE, OR USING THE PRODUCT CONTAINING THE SOFTWARE, YOU ARE CONSENTING TO BE BOUND BY THIS AGREEMENT. IF YOU DO NOT AGREE TO ALL OF THESE TERMS, THEN YOU MAY NOT DOWNLOAD, INSTALL OR USE THE SOFTWARE. YOU MAY RETURN UNUSED SOFTWARE (OR, IF THE SOFTWARE IS SUPPLIED AS PART OF ANOTHER PRODUCT, THE UNUSED PRODUCT) FOR A FULL REFUND UP TO 30 DAYS AFTER ORIGINAL PURCHASE, SUBJECT TO THE RETURN PROCESS AND POLICIES OF THE PARTY FROM WHICH YOU PURCHASED SUCH PRODUCT OR SOFTWARE.

**License.** Subject to the terms and conditions of this Agreement, Linksys grants the original end user purchaser of the Linksys product containing the Software ("You") a nonexclusive license to use the Software solely as embedded in or (where authorized in the applicable documentation) for communication with such product. This license may not be sublicensed, and is not transferable except to a person or entity to which you transfer ownership of the complete Linksys product containing the Software, provided you permanently transfer all rights under this Agreement and do not retain any full or partial copies of the Software, and the recipient agrees to the terms of this Agreement.

"Software" includes, and this Agreement will apply to (a) the software of Linksys or its suppliers provided in or with the applicable Linksys product, and (b) any upgrades, updates, bug fixes or modified versions ("Upgrades") or backup copies of the Software supplied to You by Linksys or an authorized reseller, provided you already hold a valid license to the original software and have paid any applicable fee for the Upgrade.

**Protection of Information.** The Software and documentation contain trade secrets and/or copyrighted materials of Linksys or its suppliers. You will not copy or modify the Software or decompile, decrypt, reverse engineer or disassemble the Software (except to the extent expressly permitted by law notwithstanding this provision), and You will not disclose or make available such trade secrets or copyrighted material in any form to any third party. Title to and ownership of the Software and documentation and any portion thereof, will remain solely with Linksys or its suppliers.

**Collection and Processing of Information.** You agree that Linksys and/or its affiliates may, from time to time, collect and process information about your Linksys product and/or the Software and/or your use of either in order (i) to enable Linksys to offer you Upgrades; (ii) to ensure that your Linksys product and/or the Software is being



used in accordance with the terms of this Agreement; (iii) to provide improvements to the way Linksys delivers technology to you and to other Linksys customers; (iv) to enable Linksys to comply with the terms of any agreements it has with any third parties regarding your Linksys product and/or Software and/or (v) to enable Linksys to comply with all applicable laws and/or regulations, or the requirements of any regulatory authority or government agency. Linksys and/ or its affiliates may collect and process this information provided that it does not identify you personally. Your use of your Linksys product and/or the Software constitutes this consent by you to Linksys and/or its affiliates' collection and use of such information and, for EEA customers, to the transfer of such information to a location outside the EEA.

**Software Upgrades etc.** If the Software enables you to receive Upgrades, you may elect at any time to receive these Upgrades either automatically or manually. If you elect to receive Upgrades manually or you otherwise elect not to receive or be notified of any Upgrades, you may expose your Linksys product and/or the Software to serious security threats and/or some features within your Linksys product and/or Software may become inaccessible. There may be circumstances where we apply an Upgrade automatically in order to comply with changes in legislation, legal or regulatory requirements or as a result of requirements to comply with the terms of any agreements Linksys has with any third parties regarding your Linksys product and/or the Software. You will always be notified of any Upgrades being delivered to you. The terms of this license will apply to any such Upgrade unless the Upgrade in question is accompanied by a separate license, in which event the terms of that license will apply.

**Open Source Software.** The GPL or other open source code incorporated into the Software and the open source license for such source code are available for free download at <http://www.linksys.com/gpl>. If You would like a copy of the GPL or other open source code in this Software on a CD, Linksys will mail to You a CD with such code for \$9.99 plus the cost of shipping, upon request.

**Term and Termination.** You may terminate this License at any time by destroying all copies of the Software and documentation. Your rights under this License will terminate immediately without notice from Linksys if You fail to comply with any provision of this Agreement.

**Limited Warranty.** The warranty terms and period specified in the applicable Linksys Product User Guide shall also apply to the Software.

**Disclaimer of Liabilities.** IN NO EVENT WILL LINKSYS OR ITS SUPPLIERS BE LIABLE FOR ANY LOST DATA, REVENUE OR PROFIT, OR FOR SPECIAL, INDIRECT, CONSEQUENTIAL, INCIDENTAL OR PUNITIVE DAMAGES, REGARDLESS OF CAUSE (INCLUDING NEGLIGENCE), ARISING OUT OF OR RELATED TO THE USE OF OR INABILITY TO USE THE

SOFTWARE, EVEN IF LINKSYS HAS BEEN ADVISED OF THE POSSIBILITY OF SUCH DAMAGES. IN NO EVENT WILL LINKSYS' LIABILITY EXCEED THE AMOUNT PAID BY YOU FOR THE PRODUCT. The foregoing limitations will apply even if any warranty or remedy under this Agreement fails of its essential purpose. Some jurisdictions do not allow the exclusion or limitation of incidental or consequential damages, so the above limitation or exclusion may not apply to You.

**Export.** Software, including technical data, may be subject to U.S. export control laws and regulations and/or export or import regulations in other countries. You agree to comply strictly with all such laws and regulations.

**U.S. Government Users.** The Software and documentation qualify as "commercial items" as defined at 48 C.F.R. 2.101 and 48 C.F.R. 12.212. All Government users acquire the Software and documentation with only those rights herein that apply to non-governmental customers.

**General Terms.** This Agreement will be governed by and construed in accordance with the laws of the State of California, without reference to conflict of laws principles. The United Nations Convention on Contracts for the International Sale of Goods will not apply. If any portion of this Agreement is found to be void or unenforceable, the remaining provisions will remain in full force and effect. This Agreement constitutes the entire agreement between the parties with respect to the Software and supersedes any conflicting or additional terms contained in any purchase order or elsewhere.

## END OF SCHEDULE 1

## Schedule 2

If this Linksys product contains open source software licensed under Version 2 of the "GNU General Public License" then the license terms below in this Schedule 2 will apply to that open source software. The license terms below in this Schedule 2 are from the public web site at <http://www.gnu.org/copyleft/gpl.html>

### GNU GENERAL PUBLIC LICENSE

Version 2, June 1991

Copyright © 1989, 1991 Free Software Foundation, Inc.

51 Franklin Street, Fifth Floor, Boston, MA 02110-1301, USA

Everyone is permitted to copy and distribute verbatim copies of this license document, but changing it is not allowed.

### Preamble

The licenses for most software are designed to take away your freedom to share and change it. By contrast, the GNU General Public License is intended to guarantee your

freedom to share and change free software—to make sure the software is free for all its users. This General Public License applies to most of the Free Software Foundation’s software and to any other program whose authors commit to using it. (Some other Free Software Foundation software is covered by the GNU Lesser General Public License instead.) You can apply it to your programs, too.

When we speak of free software, we are referring to freedom, not price. Our General Public Licenses are designed to make sure that you have the freedom to distribute copies of free software (and charge for this service if you wish), that you receive source code or can get it if you want it, that you can change the software or use pieces of it in new free programs; and that you know you can do these things.

To protect your rights, we need to make restrictions that forbid anyone to deny you these rights or to ask you to surrender the rights. These restrictions translate to certain responsibilities for you if you distribute copies of the software, or if you modify it.

For example, if you distribute copies of such a program, whether gratis or for a fee, you must give the recipients all the rights that you have. You must make sure that they, too, receive or can get the source code. And you must show them these terms so they know their rights.

We protect your rights with two steps: (1) copyright the software, and (2) offer you this license which gives you legal permission to copy, distribute and/or modify the software.

Also, for each author’s protection and ours, we want to make certain that everyone understands that there is no warranty for this free software. If the software is modified by someone else and passed on, we want its recipients to know that what they have is not the original, so that any problems introduced by others will not reflect on the original authors’ reputations.

Finally, any free program is threatened constantly by software patents. We wish to avoid the danger that redistributors of a free program will individually obtain patent licenses, in effect making the program proprietary. To prevent this, we have made it clear that any patent must be licensed for everyone’s free use or not licensed at all.

The precise terms and conditions for copying, distribution and modification follow.

## TERMS AND CONDITIONS FOR COPYING, DISTRIBUTION AND MODIFICATION

0. This License applies to any program or other work which contains a notice placed by the copyright holder saying it may be distributed under the terms of this General Public License. The “Program”, below, refers to any such program or work, and a “work based on the Program” means either the Program or any derivative work under copyright law: that is to say, a work containing the Program or a portion of it, either verbatim or with modifications and/or translated into another language. (Hereinafter, translation is included without limitation in the term “modification”.) Each licensee is addressed as “you”.

Activities other than copying, distribution and modification are not covered by this License; they are outside its scope. The act of running the Program is not restricted, and the output from the Program is covered only if its contents constitute a work based on the Program (independent of having been made by running the Program). Whether that is true depends on what the Program does.

1. You may copy and distribute verbatim copies of the Program’s source code as you receive it, in any medium, provided that you conspicuously and appropriately publish on each copy an appropriate copyright notice and disclaimer of warranty; keep intact all the notices that refer to this License and to the absence of any warranty; and give any other recipients of the Program a copy of this License along with the Program.

You may charge a fee for the physical act of transferring a copy, and you may at your option offer warranty protection in exchange for a fee.

2. You may modify your copy or copies of the Program or any portion of it, thus forming a work based on the Program, and copy and distribute such modifications or work under the terms of Section 1 above, provided that you also meet all of these conditions:

a. You must cause the modified files to carry prominent notices stating that you changed the files and the date of any change.

b. You must cause any work that you distribute or publish, that in whole or in part contains or is derived from the Program or any part thereof, to be licensed as a whole at no charge to all third parties under the terms of this License.

- c. If the modified program normally reads commands interactively when run, you must cause it, when started running for such interactive use in the most ordinary way, to print or display an announcement including an appropriate copyright notice and a notice that there is no warranty (or else, saying that you provide a warranty) and that users may redistribute the program under these conditions, and telling the user how to view a copy of this License. (Exception: if the Program itself is interactive but does not normally print such an announcement, your work based on the Program is not required to print an announcement.)

These requirements apply to the modified work as a whole. If identifiable sections of that work are not derived from the Program, and can be reasonably considered independent and separate works in themselves, then this License, and its terms, do not apply to those sections when you distribute them as separate works. But when you distribute the same sections as part of a whole which is a work based on the Program, the distribution of the whole must be on the terms of this License, whose permissions for other licensees extend to the entire whole, and thus to each and every part regardless of who wrote it.

Thus, it is not the intent of this section to claim rights or contest your rights to work written entirely by you; rather, the intent is to exercise the right to control the distribution of derivative or collective works based on the Program.

In addition, mere aggregation of another work not based on the Program with the Program (or with a work based on the Program) on a volume of a storage or distribution medium does not bring the other work under the scope of this License.

1. You may copy and distribute the Program (or a work based on it, under Section 2) in object code or executable form under the terms of Sections 1 and 2 above provided that you also do one of the following:
  - a. Accompany it with the complete corresponding machine-readable source code, which must be distributed under the terms of Sections 1 and 2 above on a medium customarily used for software interchange; or,
  - b. Accompany it with a written offer, valid for at least three years, to give any third party, for a charge no more than your cost of physically performing source distribution, a complete machine-readable copy of the corresponding source code, to be distributed under the terms of Sections 1 and 2 above on a medium customarily used for software interchange; or,
  - c. Accompany it with the information you received as to the offer to distribute corresponding source code. (This alternative is allowed only for noncommercial distribution and only if you received the program in object code or executable form with such an offer, in accord with Subsection b above.)

The source code for a work means the preferred form of the work for making modifications to it. For an executable work, complete source code means all the source code for all modules it contains, plus any associated interface definition files, plus the scripts used to control compilation and installation of the executable. However, as a special exception, the source code distributed need not include anything that is normally distributed (in either source or binary form) with the major components (compiler, kernel, and so on) of the operating system on which the executable runs, unless that component itself accompanies the executable.

If distribution of executable or object code is made by offering access to copy from a designated place, then offering equivalent access to copy the source code from the same place counts as distribution of the source code, even though third parties are not compelled to copy the source along with the object code.

1. You may not copy, modify, sublicense, or distribute the Program except as expressly provided under this License. Any attempt otherwise to copy, modify, sublicense or distribute the Program is void, and will automatically terminate your rights under this License. However, parties who have received copies, or rights, from you under this License will not have their licenses terminated so long as such parties remain in full compliance.
2. You are not required to accept this License, since you have not signed it. However, nothing else grants you permission to modify or distribute the Program or its derivative works. These actions are prohibited by law if you do not accept this License. Therefore, by modifying or distributing the Program (or any work based on the Program), you indicate your acceptance of this License to do so, and all its terms and conditions for copying, distributing or modifying the Program or works based on it.
3. Each time you redistribute the Program (or any work based on the Program), the recipient automatically receives a license from the original licensor to copy, distribute or modify the Program subject to these terms and conditions. You may not impose any further restrictions on the recipients' exercise of the rights granted herein. You are not responsible for enforcing compliance by third parties to this License.

4. If, as a consequence of a court judgment or allegation of patent infringement or for any other reason (not limited to patent issues), conditions are imposed on you (whether by court order, agreement or otherwise) that contradict the conditions of this License, they do not excuse you from the conditions of this License. If you cannot distribute so as to satisfy simultaneously your obligations under this License and any other pertinent obligations, then as a consequence you may not distribute the Program at all. For example, if a patent license would not permit royalty-free redistribution of the Program by all those who receive copies directly or indirectly through you, then the only way you could satisfy both it and this License would be to refrain entirely from distribution of the Program.

If any portion of this section is held invalid or unenforceable under any particular circumstance, the balance of the section is intended to apply and the section as a whole is intended to apply in other circumstances.

It is not the purpose of this section to induce you to infringe any patents or other property right claims or to contest validity of any such claims; this section has the sole purpose of protecting the integrity of the free software distribution system, which is implemented by public license practices. Many people have made generous contributions to the wide range of software distributed through that system in reliance on consistent application of that system; it is up to the author/donor to decide if he or she is willing to distribute software through any other system and a licensee cannot impose that choice.

This section is intended to make thoroughly clear what is believed to be a consequence of the rest of this License.

1. If the distribution and/or use of the Program is restricted in certain countries either by patents or by copyrighted interfaces, the original copyright holder who places the Program under this License may add an explicit geographical distribution limitation excluding those countries, so that distribution is permitted only in or among countries not thus excluded. In such case, this License incorporates the limitation as if written in the body of this License.
2. The Free Software Foundation may publish revised and/or new versions of the General Public License from time to time. Such new versions will be similar in spirit to the present version, but may differ in detail to address new problems or concerns.

Each version is given a distinguishing version number. If the Program specifies a version number of this License which applies to it and "any later version", you have the option of following the terms and conditions either of that version or of any later version published by the Free Software Foundation. If the Program does

not specify a version number of this License, you may choose any version ever published by the Free Software Foundation.

1. If you wish to incorporate parts of the Program into other free programs whose distribution conditions are different, write to the author to ask for permission. For software which is copyrighted by the Free Software Foundation, write to the Free Software Foundation; we sometimes make exceptions for this. Our decision will be guided by the two goals of preserving the free status of all derivatives of our free software and of promoting the sharing and reuse of software generally.

## NO WARRANTY

1. BECAUSE THE PROGRAM IS LICENSED FREE OF CHARGE, THERE IS NO WARRANTY FOR THE PROGRAM, TO THE EXTENT PERMITTED BY APPLICABLE LAW. EXCEPT WHEN OTHERWISE STATED IN WRITING THE COPYRIGHT HOLDERS AND/OR OTHER PARTIES PROVIDE THE PROGRAM "AS IS" WITHOUT WARRANTY OF ANY KIND, EITHER EXPRESSED OR IMPLIED, INCLUDING, BUT NOT LIMITED TO, THE IMPLIED WARRANTIES OF MERCHANTABILITY AND FITNESS FOR A PARTICULAR PURPOSE. THE ENTIRE RISK AS TO THE QUALITY AND PERFORMANCE OF THE PROGRAM IS WITH YOU. SHOULD THE PROGRAM PROVE DEFECTIVE, YOU ASSUME THE COST OF ALL NECESSARY SERVICING, REPAIR OR CORRECTION.
2. IN NO EVENT UNLESS REQUIRED BY APPLICABLE LAW OR AGREED TO IN WRITING WILL ANY COPYRIGHT HOLDER, OR ANY OTHER PARTY WHO MAY MODIFY AND/OR REDISTRIBUTE THE PROGRAM AS PERMITTED ABOVE, BE LIABLE TO YOU FOR DAMAGES, INCLUDING ANY GENERAL, SPECIAL, INCIDENTAL OR CONSEQUENTIAL DAMAGES ARISING OUT OF THE USE OR INABILITY TO USE THE PROGRAM (INCLUDING BUT NOT LIMITED TO LOSS OF DATA OR DATA BEING RENDERED INACCURATE OR LOSSES SUSTAINED BY YOU OR THIRD PARTIES OR A FAILURE OF THE PROGRAM TO OPERATE WITH ANY OTHER PROGRAMS), EVEN IF SUCH HOLDER OR OTHER PARTY HAS BEEN ADVISED OF THE POSSIBILITY OF SUCH DAMAGES.

END OF TERMS AND CONDITIONS

## END OF SCHEDULE 2

## Schedule 3

If this Linksys product contains open source software licensed under the OpenSSL license:

This product includes software developed by the OpenSSL Project for use in the OpenSSL Toolkit. (<http://www.openssl.org/>).

This product includes cryptographic software written by Eric Young (eay@cryptsoft.com).

This product includes software written by Tim Hudson (tjh@cryptsoft.com).

In addition, if this Linksys product contains open source software licensed under the OpenSSL license then the license terms below in this Schedule 3 will apply to that open source software. The license terms below in this Schedule 3 are from the public web site at <http://www.openssl.org/source/license.html>.

The OpenSSL toolkit stays under a dual license, i.e. both the conditions of the OpenSSL License and the original SSLeay license apply to the toolkit. See below for the actual license texts. Actually both licenses are BSD-style Open Source licenses. In case of any license issues related to OpenSSL please contact openssl-core@openssl.org.

## OpenSSL License

Copyright © 1998-2007 The OpenSSL Project. All rights reserved.

Redistribution and use in source and binary forms, with or without modification, are permitted provided that the following conditions are met:

1. Redistributions of source code must retain the above copyright notice, this list of conditions and the following disclaimer.
2. Redistributions in binary form must reproduce the above copyright notice, this list of conditions and the following disclaimer in the documentation and/or other materials provided with the distribution.
3. All advertising materials mentioning features or use of this software must display the following acknowledgment: "This product includes software developed by the OpenSSL Project for use in the OpenSSL Toolkit. (<http://www.openssl.org/>)"
4. The names "OpenSSL Toolkit" and "OpenSSL Project" must not be used to endorse or promote products derived from this software without prior written permission. For written permission, please contact openssl-core@openssl.org.
5. Products derived from this software may not be called "OpenSSL" nor may "OpenSSL" appear in their names without prior written permission of the OpenSSL Project.
6. Redistributions of any form whatsoever must retain the following acknowledgment: "This product includes software developed by the OpenSSL Project for use in the OpenSSL Toolkit (<http://www.openssl.org/>)"

THIS SOFTWARE IS PROVIDED BY THE OpenSSL PROJECT "AS IS" AND ANY EXPRESSED OR IMPLIED WARRANTIES, INCLUDING, BUT NOT LIMITED TO, THE IMPLIED WARRANTIES OF MERCHANTABILITY AND FITNESS FOR A PARTICULAR PURPOSE ARE DISCLAIMED. IN NO EVENT SHALL THE OpenSSL PROJECT OR ITS CONTRIBUTORS BE LIABLE FOR ANY DIRECT, INDIRECT, INCIDENTAL, SPECIAL,

EXEMPLARY, OR CONSEQUENTIAL DAMAGES (INCLUDING, BUT NOT LIMITED TO, PROCUREMENT OF SUBSTITUTE GOODS OR SERVICES; LOSS OF USE, DATA, OR PROFITS; OR BUSINESS INTERRUPTION) HOWEVER CAUSED AND ON ANY THEORY OF LIABILITY, WHETHER IN CONTRACT, STRICT LIABILITY, OR TORT (INCLUDING NEGLIGENCE OR OTHERWISE) ARISING IN ANY WAY OUT OF THE USE OF THIS SOFTWARE, EVEN IF ADVISED OF THE POSSIBILITY OF SUCH DAMAGE.

This product includes cryptographic software written by Eric Young (eay@cryptsoft.com). This product includes software written by Tim Hudson (tjh@cryptsoft.com).

## Original SSLeay License

Copyright © 1995-1998 Eric Young (eay@cryptsoft.com) All rights reserved.

This package is an SSL implementation written by Eric Young (eay@cryptsoft.com).

The implementation was written so as to conform with Netscapes SSL.

This library is free for commercial and non-commercial use as long as the following conditions are adhered to. The following conditions apply to all code found in this distribution, be it the RC4, RSA, lhash, DES, etc., code; not just the SSL code. The SSL documentation included with this distribution is covered by the same copyright terms except that the holder is Tim Hudson (tjh@cryptsoft.com).

Copyright remains Eric Young's, and as such any Copyright notices in the code are not to be removed.

If this package is used in a product, Eric Young should be given attribution as the author of the parts of the library used. This can be in the form of a textual message at program startup or in documentation (online or textual) provided with the package.

Redistribution and use in source and binary forms, with or without modification, are permitted provided that the following conditions are met:

1. Redistributions of source code must retain the copyright notice, this list of conditions and the following disclaimer.
2. Redistributions in binary form must reproduce the above copyright notice, this list of conditions and the following disclaimer in the documentation and/or other materials provided with the distribution.
3. All advertising materials mentioning features or use of this software must display the following acknowledgement:

"This product includes cryptographic software written by Eric Young (eay@cryptsoft.com)"

The word 'cryptographic' can be left out if the routines from the library being used are not cryptographic related.

1. If you include any Windows specific code (or a derivative thereof) from the apps directory (application code) you must include an acknowledgement: "This product includes software written by Tim Hudson (tjh@cryptsoft.com)"

THIS SOFTWARE IS PROVIDED BY ERIC YOUNG "AS IS" AND ANY EXPRESS OR IMPLIED WARRANTIES, INCLUDING, BUT NOT LIMITED TO, THE IMPLIED WARRANTIES OF MERCHANTABILITY AND FITNESS FOR A PARTICULAR PURPOSE ARE DISCLAIMED. IN NO EVENT SHALL THE AUTHOR OR CONTRIBUTORS BE LIABLE FOR ANY DIRECT, INDIRECT, INCIDENTAL, SPECIAL, EXEMPLARY, OR CONSEQUENTIAL DAMAGES (INCLUDING, BUT NOT LIMITED TO, PROCUREMENT OF SUBSTITUTE GOODS OR SERVICES; LOSS OF USE, DATA, OR PROFITS; OR BUSINESS INTERRUPTION) HOWEVER CAUSED AND ON ANY THEORY OF LIABILITY, WHETHER IN CONTRACT, STRICT LIABILITY, OR TORT (INCLUDING NEGLIGENCE OR OTHERWISE) ARISING IN ANY WAY OUT OF THE USE OF THIS SOFTWARE, EVEN IF ADVISED OF THE POSSIBILITY OF SUCH DAMAGE.

The license and distribution terms for any publicly available version or derivative of this code cannot be changed. i.e. this code cannot simply be copied and put under another distribution license [including the GNU Public License.]

### END OF SCHEDULE 3