

# Compact Utility Tractors

1 Family / 2 Family / 3 Family / 4 Family



JOHN DEERE



# Contents

## Outstanding Features

Discover the value a John Deere compact utility tractor can offer you through numerous innovations and intelligent features.



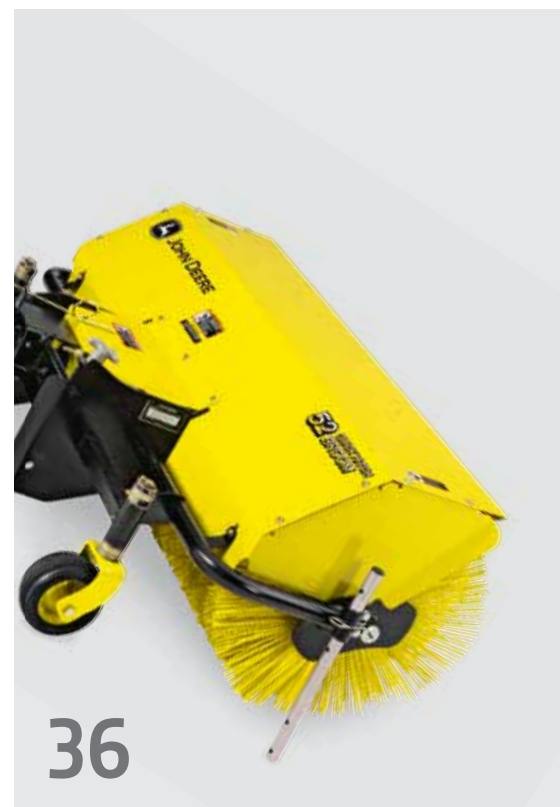
10



4

## Augusta Elements

Learn about the state-of-the-art technology and USA build quality that goes into each of our compact utility tractors.



36

## Attachments

Hydraulics, towing and lift hitches, quick attach blade and brooms. Our attachments will make your John Deere even more versatile.



8

**All-round Support**

From advice and sales to maintenance and repairs, your local John Deere team are here to help.

Augusta Elements ..... 4–7  
 All-round Support ..... 8–9

**Outstanding Features**

Features ..... 10–11  
 ComfortGard™ Cab & control layout ..... 12–13  
 Loaders ..... 14  
 AutoConnect™ mowing decks ..... 15  
 Additional equipment ..... 15

**Compact Utility Tractors**

1 Family ..... 16–17  
 2 Family ..... 18–21  
 3 Family ..... 22–29  
 4 Family ..... 30–35

**Attachments** ..... 36–41

**Specifications** ..... 42–47



**16**  
 Compact Utility  
 Tractors

# Augusta Elements

Earth, air, water, fire ... you'll find all of these at the American John Deere factory in Grovetown, Georgia. But it's the fifth element that really makes the difference: the engineers and craftsmen who design and assemble our compact utility tractors there for the entire world.

Using state-of-the-art technology, they fashion iron and steel, rubber and glass into machines of the highest possible standards. John Deere has a passion for quality engineering, and it shows. In every nut, bolt and weld of our compact utility tractors and on the faces of the people who are proud to build them.

## Made for Australia & New Zealand

We never compromise. From metric nuts and bolts to emission standards and safety warnings, each machine is all set up and ready to go.

## Built for Australia & New Zealand

In Augusta, we factory-fit every tractor with the correct technology for the region it's destined for. So when you buy a 1, 2, 3, or 4 Family model in Australia & New Zealand, you can be sure it has everything you need to operate smoothly and safely from the very start. From mirrors and lights to emission standards and safety warnings, our people in Augusta pull out all the stops to make sure you enjoy the best of both worlds: USA build quality, plus Australian and New Zealand specifications.



***“We never assume something will be all right – we make darn sure it is.”***

David King  
Manufacturing Engineer



**John Deere Augusta** began building 1, 2, 3 and 4 Family Compact Utility Tractors in 1990. The facility currently produces 27 different models that are distributed throughout North America and globally to over 40 different countries. It occupies more than 37,000 square metres and employs approximately 470 employees.



***“The people here really want to do a good job. They take feedback well, and they keep us really busy with suggestions for making things better still.”***

David King  
Manufacturing Engineer



A transmission is being mounted onto the high-strength steel frame of a compact utility tractor by two Augusta factory workers.



## Interviews



**David King** is a **Manufacturing Engineer** who plans and oversees the production lines for 3 and 4 Family premium compact utility tractors. Every day, he looks for ways to add even more quality through the tools, processes and quality control checks he specifies. "I'm proud that we can build such great products in the USA, despite the higher labour costs involved."



**Steve Sanner** is a **Field Test Supervisor** who has been with the company for 20 years. Three years before a new tractor is launched, Steve starts testing prototypes to catch any flaws or weaknesses well ahead of production. "My colleagues get paid to make them, I get paid to break them", he smiles. "Then when I do, we all dig in together to solve the issue and get it right."

The Augusta factory builds compact utility tractors from start to finish for the whole world.



***"People in Europe work our machines much longer and harder than our customers in the USA. So if we can satisfy Europe, we can satisfy anybody!"***

Steve Sanner  
Field Test Supervisor

# All-round Support

From advice and sales to maintenance and repairs, your local John Deere partner has everything you need to keep your investment running like clockwork. Find your nearest John Deere dealer today at [dealerlocator.deere.com](http://dealerlocator.deere.com)



## A global community

The people at your local John Deere dealership are always there for you – with personal service you can rely on. As part of the John Deere community, they combine their own individual style with all the benefits of a strong global company.





# PowerGard

## Relax – you're covered

With a PowerGard Protection Plan™, you can rest assured that your machines will always be in peak condition and raring to go.



## Tailor-made financing

John Deere Financial has been helping customers grow their businesses for more than 150 years. Based on our unique understanding of your market and the challenges you face, we offer competitive, tailor-made financing for the machines you need to raise your game.

Your local John Deere dealer can help you choose the options that suit your business best. Why not drop in for a chat?

## Spares and repairs

Even a John Deere needs repairs eventually. When the day comes, our dealers pull out all the stops to keep downtime to a minimum. With a state-of-the-art workshop and a fully trained technical team on hand, they can provide professional support being equipped with the latest updates directly from the factories. For smaller repairs you'd rather do yourself, they can supply everything you need – even for older models.

# Outstanding Features



## ComfortGard™ Cab

ComfortGard Cabs are designed for outstanding comfort all year round.

## Solid baseline

A robust chassis provides the platform for the toughest tasks, from towing large loads through to the shock resistance needed for loader work.



**Independent PTO:** Forget the days of stopping the tractor and manually engaging the PTO. With the electro-hydraulic PTO you can turn on your implement while you're on-the-go, so you can get your work done faster and easier.

### 1 & 2 Family – hydrostatic transmission

Hydrostatic transmission with Twin Touch™ pedals for ease of use and precise operation.

### 3 & 4 Family – eHydro™ and PowrReverser™ transmissions

- eHydro provides an exclusive three range electronic hydrostatic transmission with effortless Twin Touch pedals.
- PowrReverser allows clutchless, hydraulic shifting between forward and reverse with a single lever.



### Operator station

Work safely in a spacious, ergonomic environment.



### 4-wheel drive & differential lock

Four wheel drive provides extra traction in challenging conditions and increased pulling power. A differential lock also delivers more on-the-go engagement.



**Lift and towing hitches:** A wide range of efficient and powerful lift and towing hitches, for both the front and rear, increase the versatility of your tractor.

## ComfortGard™ Cab – 3R & 4R Series

Designed for outstanding comfort all year round, ComfortGard Cabs are fully sealed and pressurised to reduce the noise levels down to just 79 dB(A). The air conditioning and heating set new standards in performance and efficiency, while the high seat position and curved doors ensure a panoramic view in all directions. ComfortGard Cabs are standard on 4R and optional on the 3R models.



**Seat of power:** The deluxe cloth seat keeps operators relaxed and focused all day for even more comfort on difficult terrain.



**Intuitive control layout & colour-coded display**

Innovative control console, ergonomic layout. Performance Tracking System: indicates status of machine vital system and helps monitor performance.



**Service ADVISOR™**

Intelligent machine diagnostics via Service ADVISOR technology ensure efficient, cost effective solutions to keep your machine operating at its optimum level.



### Loaders

When you need a loader, you need one that's been designed to work perfectly with the tractor and its hydraulic system. That's just what you get with John Deere. The R Series Loaders offer the premium in performance and convenience with a Quik-Park mounting system with built-in parking stands. The 440R even has the option of mechanical self-leveling where the bucket keeps your set angle during lifting and lowering.

**Quik-Park™ loader mounting system:** R Series Loaders are designed for easy, tool-free mounting and removal. The parking stand is attached to the front frame of the tractor and becomes an integral part of the loader during loader operation. To drop the loader to the 'park' position, just lift the joystick after opening the latches.

		120R	120R	220R	300E	320R	440R
		1 FAMILY		2R SERIES	3E SERIES	3R SERIES	4 FAMILY
<b>Lift Capacity:</b> The lift capacity at pivot pin is a gross measure of loader lifting ability.	Lift capacity at pivot point (max. height), kg (lb.)	342 (754)	381 (840)	509 (1,120)	539 (1,186)	725 (1,598)	1,006 (2,213)*
<b>Lift and Reach:</b> Consider how high and far you need a loader to reach. Do you need to load a truck, for instance?	Maximum lift height at pivot point, mm (in.) Reach at max. height, mm (in.)	1,828 (72) 626 (25)	1,828 (72) 626 (25)	2,160 (85) 756 (30)	2,140 (84) 603 (24)	2,593 (102) 562 (22)	2,796 (110)* 755 (30)*
<b>Breakout Force:</b> The higher the breakout force, the easier it is to fill the bucket.	Breakout force at pivot point, kg (lb.)	826 (1823)	911 (2008)	886 (1949)	775 (1,704)	1,480 (3,327)	1,744 (3,844)*
<b>Quik-Park loader</b>		■	■	■		■	■
<b>Mechanical Self-Leveling (MSL)</b>							■

\*MSL loader specifications.  
Note: Non MSL loaders will be supplied with a self-leveling compliance kit when sold in Australia.

## AutoConnect™ mowing decks

The John Deere AutoConnect mowing deck attaches in seconds, saving you time every time you mow. The deck and driveshaft automatically connects when you drive over it. Then when you're done, simply reverse back over to disconnect again – all from the comfort of your seat.



	DRIVEOVER WITH AUTOCONNECT		
	137 cm (54 in.)	152 cm (60 in.)	183 cm (72 in.)
1023E/1025R	■	■	
2025R	■	■	
2036R		■	■
3033R		■	■
3038R		■	■
3045R		■	■

**Choose your width:** Our mowing decks come in different widths, with an optional material collection system for even more flexibility.

## Additional equipment

### Material Collection System (MCS)

The 3-Bag Power Flow™ has a 14-bushel capacity that can be easily removed to spread clippings in a compost area or transfer to a bag for removal. The chute connecting the Power Flow to the hopper comes with a fill indicator so an operator can tell how full the hopper is without having to leave the seat.

### Rotary Tillers

John Deere provides high-quality rotary tillers in a choice of widths to match the tractor's horsepower and meet the needs of consumer and commercial customers.

### 366 Front Blade

This 168 cm (66 in.) blade will make short work of gravel, dirt or other loose materials.



	MCS		TILLERS				BLADE
	3-Bag Power Flow	647	655	665	673	366	
1023E	■	■					
1025R	■	■					
2025R	■	■	■				
2036R		■	■	■		■	
3038E		■	■	■			
3033R		■	■			■	
3038R		■	■	■	■	■	
3045R			■	■	■	■	
4049M				■	■		
4049R				■	■		



# 1 Family

## Experience the possibilities

The 1023E and 1025R Compact Utility Tractors offer perfect stability and ride comfort, and are easy to park and store. Designed for a wide range of tasks, these sub-compact tractors let you switch tools or attachments easily and quickly. Standard features include a hydrostatic transmission, 4WD and power steering for smooth operation – plus a deluxe seat and suspension, tilt steering and deluxe lighting kit for all-day productivity.







### Easy lift bonnet

With an easy lift bonnet and standard twin gas-charged lift struts. Just flip the latch for wide-open access to the engine bay.

### On all 1 Family models

Mid & Rear PTO

Optional:  
 – Backhoe  
 – Tiller  
 – Mower Deck  
 – Collection System  
 – Front Loader  
 – Front Lift Hitch

### Engine

A reliable high torque 3-cylinder diesel engine with large cooling surface area for sustained performance.



## 1023E

16 kW (21.5 hp) at 3,200 RPM  
 (SAE J1995 Power at rated speed)

Displacement: 993 cc

2 range Hydrostatic / Two Pedal Automatic

Lift Capacity: 344 kg  
 (at 610 mm [24 in.] behind lift ends)

Weight: 610 kg



### Tilt steering

Tilt steering lets you keep your arms in a natural position for less fatigue.

## 1025R

17.8 kW (23.9 hp) at 3,200 RPM  
 (SAE J1995 Power at rated speed)

Displacement: 1,267 cc

2 range Hydrostatic / Two Pedal Automatic

Lift Capacity: 344 kg  
 (at 610 mm [24 in.] behind lift ends)

Weight: 655 kg



### Quality

The 1 Family tractors have spur gear final drives for durability, and wet disc brakes for no-nonsense stopping power.

# 2 Family

## Experience compact versatility

Why compromise? Our versatile 2 Family Tractors are easy to use and manoeuvre and offer all the big tractor stability and reliability you expect from John Deere. The liquid-cooled diesel engines deliver high power and speed, while the heavy-duty axles, 4WD and Category 1 rear 3-point hitch are ideal for heavy work. Visibility and attachability are better than ever for continued productivity.





### Engine

A compact 3-cylinder diesel engine has pulling power to spare and features an easy lift bonnet and side panels that can be removed without tools.



### Small but robust

Don't let the compact size fool you: just like its bigger brothers the 2R is built to be tough!

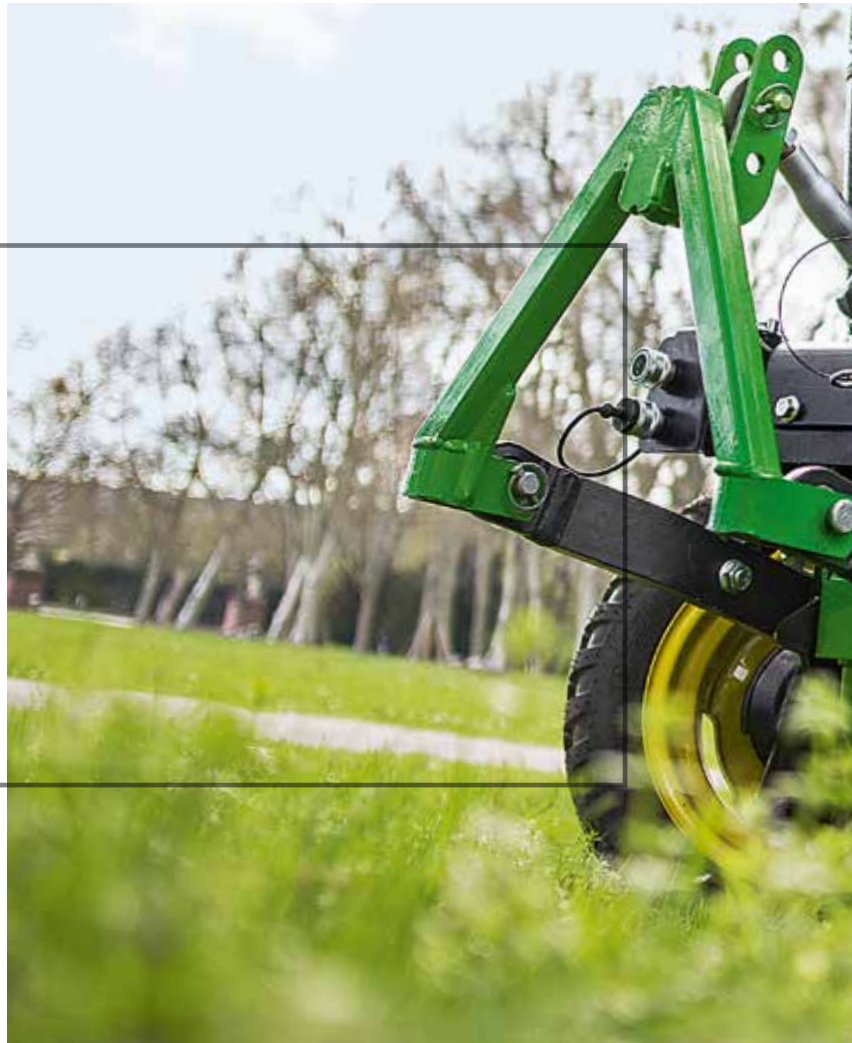
### eThrottle

Allows the machine to automatically increase or decrease engine speed as the operator presses on either of the Twin Touch™ pedals. Beneficial when transporting the machine on roadways because it allows the operator to keep both hands on the wheel and have full control of the machine with their feet. The increased efficiency also delivers improved fuel economy.



### 3-point front hitch

Compact and powerful for increased versatility of your machine. The 2036R even features an electric lock out valve activated easily from the operator seat for secure transportation operation. Lift it, lock it, done!



### CommandCut™

The 2036R features an electronic height of cut control for quick and accurate adjustment of the mower deck with the flip of a switch. Height of cut is shown in the operator display panel for convenience. Repeat operation is therefore simple.

### Comfortable operator station

The ergonomic layout and convenient colour coded controls allow for easy identification and operation. The design of the operator station provides comfort and increased stability and visibility.





### On all 2 Family models

Mid & Rear PTO

Optional:

- Backhoe
- Tiller
- Mower Deck
- Collection System (2025R only)
- Front Loader
- Front Lift Hitch



## 2025R

17.8 kW (23.9 hp) at 3,200 RPM  
(SAE J1995 Power at rated speed)

Forward Speed: 19.8 km/h

2 range Hydrostatic / Two Pedal Automatic

Lift capacity: 400 kg  
(at 610 mm [24 in.] behind lift ends)

Towing Capacity: 1,712 kg

Weight: 775 kg



### Rear hitch

This Category 1 rear 3-pt hitch can operate a wide range of implements. For even more versatility, order the optional front lift hitch.

## 2036R

27.7 kW (37.1 hp) at 2,600 RPM  
(SAE J1995 Power at rated speed)

Forward Speed: 26.7 km/h

2 range Hydrostatic / Two Pedal Automatic

Lift capacity: 615 kg  
(at 610 mm [24 in.] behind lift ends)

Towing Capacity: 2,500 kg

Weight: 1,100 kg

# 3E Series

Experience a high standard

Why compromise on performance or capability? The 3038E Compact Utility Tractor is a simple, affordable machine that gets things done without making a fuss. The tight turning radius and great ergonomics make work easy – and the quality is John Deere through and through.





### The all rounder

Our 3E Series tractors combine simplicity and ease of operation with 'big tractor' features like Twin Touch™ pedals and power assisted steering.

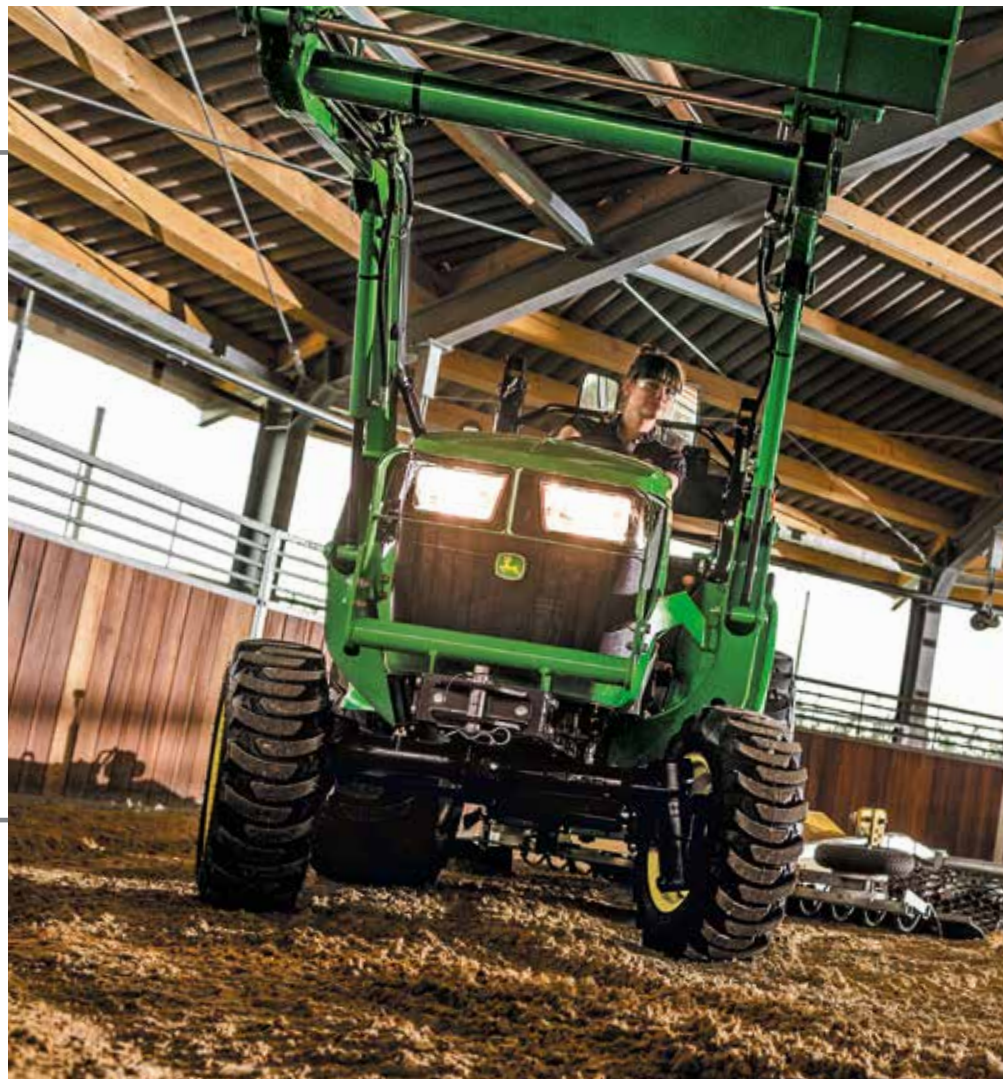


### Easy on/off access

Getting on and off is safe and easy thanks to the left-side step and the clear, unobstructed step-through platform with its non-slip surface.

### Nimble performer

Even with a loader attached, the 3038E is a joy to manoeuvre in tight spots and confined spaces.



### Engine

A reliable turbocharged engine with direct fuel injection for more efficient fuel consumption and improved starting in lower temperatures.



### Easy lift bonnet

The 3038E model now has an easy lift bonnet with standard, twin gas-charged lift struts. Just flip the latch for wide-open access to the engine bay.





## 3038E

27.7 kW (37.1 hp) at 2,600 RPM  
(SAE J1995 Power at rated speed)

Max. Torque: 120 Nm at 1,680 RPM

2 range Hydrostatic / Two Pedal Automatic

Lift Capacity: 615 kg  
(at 610 mm [24 in.] behind lift ends)

Towing Capacity: 2,500 kg

Weight: 1,053 kg

Rear PTO

Optional:  
– Fixed Front Loader  
– Tiller



**Category 1 rear 3pt hitch:** High lift capacity to operate a wide variety of implements.



**Ag tyres:** When traction is more important than potential ground damage, specify our bar tread R1 agricultural tyres for uncompromising all-year pulling power.

# 3R Series

## Experience power management

To help you use the power of your 3R Series tractors to the full, we fit a whole suite of advanced features as standard. These include 4WD, a digital performance tracking system and LoadMatch™ – an incredible electric engine power management system for peak performance in every application.



## Engine

A 3-cylinder diesel engine provides a high torque reserve for impressive pulling power under load. The larger models are also turbocharged for increased performance.



## Maximise your productivity

Match your tractor's performance to the task in hand effortlessly with eHydro™, our 3-range electronic transmission with Twin Touch™ pedals:

- **LoadMatch:** adjusts driving speed to engine load for maximum performance and no stalling.
- **MotionMatch™:** adjusts transmission response instantly for adapted back-and-forth loading.
- **SpeedMatch™:** sets a constant speed in 0.1 km/h steps during aeration/ spraying or in confined spaces.
- **Cruise control:** set a ground speed and keep it, the same as in your car.

### Standard joystick with 3rd function

Allows operation of front or mid mounted implements with an integrated 3rd function which is ideal when using an attachment like a multi function bucket on a loader.

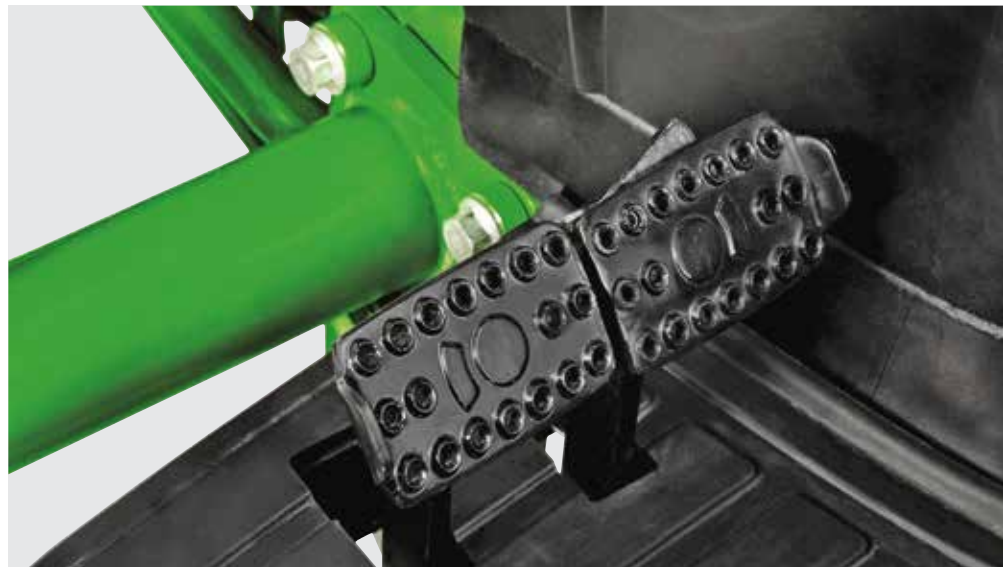


### Wet disc brakes

The self-adjusting disc brakes are oil cooled to prevent fading and minimise wear.

### Single wheel brakes

Help to increase traction and allow even tighter turns.





### eHydro™ or PowrReverser™ transmission

- eHydro provides an exclusive three range electronic hydrostatic transmission with comfortable (electrical) Twin Touch™ pedals.
- PowrReverser provides a hydraulically shifted forward to reverse transmission, which allows clutchless shifting between forward and reverse with one lever (3038R only).

### On all 3R Series models

- Mid Chassis
- Lift Capacity: 999 kg  
(at 610mm [24 in.] behind lift ends)
- Towing Capacity: 4,000 kg
- Weight ROPS / Cab: 1,400 kg / 1,700 kg
- Mid & Rear PTO

- Optional:
- Front PTO
  - Mower Deck
  - Cab
  - Front Loader
  - eSCV
  - Front Lift Hitch
  - Tiller
  - Front Blade
  - Backhoe



### 3033R

24.2 kW (32.5 hp) at 2,600 RPM  
(SAE J1995 Power at rated speed)

Max. Torque: 107 Nm at 1,200 RPM

Two Pedal eHydro Transmission

### 3038R

277 kW (371 hp) at 2,600 RPM  
(SAE J1995 Power at rated speed)

Max. Torque: 116 Nm at 1,400 RPM

Transmission Options:

Two Pedal eHydro Transmission

ePRT (PowrReverser Transmission)

### 3045R

32.8 kW (44 hp) at 2,600 RPM  
(SAE J1995 Power at rated speed)

Max. Torque: 137 Nm at 1,560 RPM

Two Pedal eHydro Transmission

# 4M Series

## Experience the value

The 4M Series gives you the power and control of a fully grown farm tractor. With a 4-cylinder diesel engine, an eHydro™ transmission, 4WD and a new, intuitive control console at your command, you have everything you need to tackle a wide range of jobs effectively and easily.





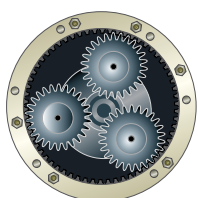
### PowrReverser™

The PowrReverser gear transmission is ideal for loader work. Just move a lever to shift smoothly between forward and reverse – no clutch required.



### Ag tyres

For uncompromising all-year grip and pulling power, specify these bar-tread R1 agricultural tyres.



### Planetary gears

This is the same final drive layout we fit in our bigger tractors. It improves reliability by spreading the load over three gears.

### Engine

Powerful 4-cylinder diesel engine with high torque reserve and designed to run quietly. The direct injection delivers fast starts, even in cold temperatures and runs clean, meeting the emission standards. In addition, the 4066M features a diesel particulate filter for reduced engine emissions.

### On all 4M Series models

- Large Chassis
- Lift Capacity: 1,134 kg  
(at 610 mm [24 in.] behind lift ends)
- Towing Capacity: 5,000 kg
- Weight: 1,710 kg  
(empty with ROPS)
- Rear PTO

- Optional:
- Front PTO
  - Fixed Front Loader
  - Front Lift Hitch
  - Wheelspacers
  - Backhoe



### 4049M

36 kW (48.3 hp) at 2,600 RPM  
(SAE J1995 Power at rated speed)

Displacement: 1,995 cc

Transmission Options:

Two Pedal eHydro Transmission

ePRT (PowrReverser Transmission)

### 4066M

48.5 kW (65 hp) at 2,600 RPM  
(SAE J1995 Power at rated speed)

Displacement: 2,091 cc

Transmission Options:

Two Pedal eHydro Transmission

ePRT (PowrReverser Transmission)

# 4R Series

Experience premium comfort & operation

Our premium 4R Series tractors are specially designed to make life easier! LoadMatch™ eliminates stalling by automatically matching engine speed to the engine load. Standard Hitch Assist makes the rear hitch faster to use and safer. The optional self-levelling Quik-Park™ Loader attaches in less than three minutes, and the standard Air Ride seat keeps you comfortable and productive all day long.







### Common rail engine & diesel particulate filter

Intelligent common rail engines control fuel injection timing and provide precise control for the start, duration and end of injection for increased performance. In addition, the 4066R features a diesel particulate filter for reduced engine emissions.



### Maximise your productivity

Match your tractor's performance to the task in hand effortlessly with eHydro™, our 3-range electronic transmission with Twin Touch™ pedals:

- **LoadMatch™:** adjusts driving speed to engine load for maximum performance and no stalling.
- **MotionMatch™:** adjusts transmission response instantly for adapted back-and-forth loading.
- **SpeedMatch™:** sets a constant speed in 0.1 km/h steps during aeration / spraying or in confined spaces.
- **Cruise control:** set a ground speed and keep it, just as in your car.



### Standard joystick with 3rd function

Ergonomically located integrated joystick for maximum control and comfort during operation of front or mid-mounted implements. It also features an integrated 3rd function which is ideal when using a multi-function bucket etc. The 4th and 5th function have independent controls providing additional versatility.

### Powerful hydraulics

Large hydraulic pumps ensure responsive steering, fast loading cycles and effortless work. You can even apply optional down pressure on the 3-point hitch when drilling post holes.

### Downforce kit

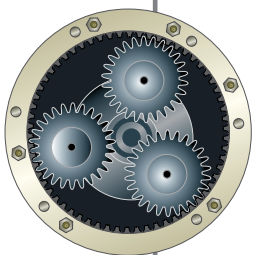
The optional 3-point hitch downforce kit allows an extra 227 kg (500 lb.) of downward force to be applied to the lower 3-point hitch arms to push an implement through hard and compacted soil. This is especially useful in posthole digging, tilling applications and rear blade work.

### Wet disc brakes

The self-adjusting disc brakes are oil cooled to prevent fading and minimise wear.

### Single wheel brakes

Help to increase traction even in very rough conditions and allow even tighter turns.



### Planetary gears

This is the same final drive layout we fit in our bigger tractors. It improves reliability by spreading the load over three gears.

### Hitch assist

Couple attachments to the rear hitch quickly and safely with this intelligent feature which allows the operator to stand at the rear of the tractor and move the entire machine forward and backwards in addition to lifting and lowering the rear hitch. Simple, safe and effective.



### On all 4R Series models

- Large Chassis
- Lift Capacity: 1,134 kg  
(at 610 mm [24 in.] behind lift ends)
- Towing Capacity: 5,000 kg
- Weight: 2,120 kg
- Rear PTO
- ComfortGard™ Cab
- Hitch assist

- Optional:
- Front PTO
  - Front Lift Hitch
  - Front Loader
  - Backhoe



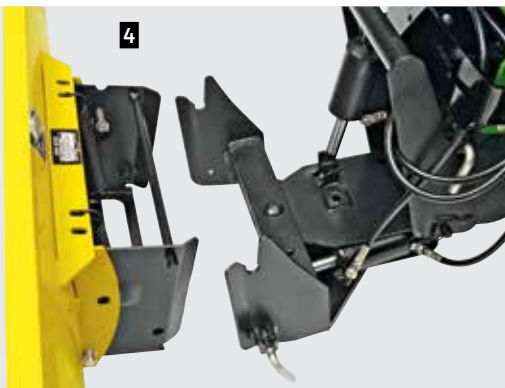
### 4049R

36 kW (48.3 hp) at 2,600 RPM <small>(SAE J1995 Power at rated speed)</small>
Displacement: 1,995 cc
Two Pedal eHydro™ Transmission
ComfortGard Cab

### 4066R

48.5 kW (65 hp) at 2,600 RPM <small>(SAE J1995 Power at rated speed)</small>
Displacement: 2,091 cc
Two Pedal eHydro Transmission
ComfortGard Cab

# Attachments



## Front hitch

### 1 3-point front hitch

With an A frame for fast changing of generic implements.

### 2 JD quick hitch

Change between John Deere implements in no time.

### 3 JD quick hitch broom

For easy removal of loose material or to clean up surrounds.

### 4 JD quick hitch blade

For removing or grading loose material.

### 5 PTO

Different speed and turning directions available to suit application.

## Rear hitch

### 6 Height adjustable rear hitch

Easy to use height adjustments for all trailers with clevis and ball type.



7

## Buckets

### 7 Materials buckets

Load dirt, gravel and feed. Round-back bucket design provides superior material filling and emptying.

### Heavy-duty buckets

Designed for heavier applications, this bucket features additional wear bars, bucket end plate supports and pre-drilled holes for replacing the cutting edges. (Bucket loop option on 1,850 mm heavy-duty bucket).

### High volume buckets

The perfect match for moving a large amount of light material such as sawdust, mulch and feed.



8

### 8 Tooth bars

Easily penetrate hard-packed material. Slide tooth bar over cutting edge to attach.



9

### 9 Replaceable cutting edges

Recommended for commercial operations and rental customers. Reinforced and reversible for longer wear life. Not compatible with tooth bars.

## Weight

### 10 Front weights

Individual weights with integrated handles for easy attaching and removal.

### 11 Rear wheel weights

For improved traction and balance on slippery terrain, for example when loading or when removing snow.

### 12 Ballast boxes

Enhance loader performance in all conditions with correct ballasting. Order a ballast box extension to add even more ballasting to the rear.

### 13 Quik-Tatch weights

Ballasting is made easy with these individual weights. Moulded-in handles make installation and removal easy.



10



11



12



13



1

## Hydraulics

The hydraulic system makes easy work of powering PTOs, hitches and front loaders. Get the most out of your tractor by adding optional attachments if they are not already standard on the machine.\*



2

### 1 Hydraulic rear couplers

Quickly and effortlessly remove your hydraulic hook-ups with these couplers.

### 2 Diverter kit

Divert power to the rear of your tractor with this convenient toggle switch. Engage to hydraulically operate rear implements with your loader joystick. Disengage to transfer power back to the front implements. Footplate to 4 extra couplers at the rear of the tractor.



3



4

### 3 Power beyond

Get power to the rear of your tractor in order to operate attachments that contain a control valve such as a backhoe.

### 4 Fourth and fifth SCV-kits

Provides two additional pairs of rear SCVs. The kit can be field installed with or without a loader. The functions are completely separate from the loader.

\* All dependent on model type. Speak to your John Deere Dealer for specific information.

## Lights

### 5 Rear work lights

Shed some light especially when working with rear implements.

### 6 Forward lighting kit

Enjoy increased visibility up front when working in dark conditions. Two lights mount to brush guards located on the Roll Over Protection Structure. (Forward lighting kit standard on cab units)\*.

### 7 Beacon light

For added safety enhance visibility with this amber-coloured, rotating high-intensity light.



5



6



7



## Miscellaneous

### 8 Cruise control

Set a ground speed and keep it, just as in your car.

### 9 External tool boxes

A convenient place to hold all of your tools. This heavy-duty steel box can easily be installed in three different tractor areas.

### 10 Vertical exhausts

Direct exhaust up and over the operator's head. The perfect choice for exhaust-sensitive applications such as certain vegetation.

### 11 Armrest kit

Armrests provide additional support and comfort for long days in the seat. Pivot armrest up and out of the way when exiting tractor. (Armrest kit standard on seat with cab units).



## Safety

### 12 Back-up alarm kit<sup>^</sup>

Alert bystanders when you are reversing with this audible alarm that sounds when the tractor is in reverse.

### 13 Locking fuel cap

A sure way to guard against theft or vandalism.



### 14 Door lock kit

The door-lock kit features a new handle and high security dedicated cab door key that is different from the standard ignition key.



<sup>^</sup> Not for PowrReverser™ transmission.



## Tyres

### 1 R1 Ag

For agricultural style application.

### 2 R3 Turf

For mowing, choose turf tread R3 tyres with their less aggressive pattern.

### 3 R3 Turf Special

For fine turf or golf courses, choose these R3 special golf tyres.

### 4 R3 Turf Radial

Also for fine turf or golf applications.

### 5 R4 Industrial

For a good mix of traction and ground care, consider this all-year-round solution.



## Fender

### 6 Front fenders

Help to protect against unwanted dirt and mud on cab glass or operator station.

### 7 Rear fender extensions

Help to keep debris from the rear tyres off of you, your tractor and your implements.





## Hood guard

### 8 Hood guard

Protect your grille from brush, debris and those inevitable knocks during dumping or loading.

### 9 Deluxe hood guards\*

Enjoy increased protection to the front and side of your grille. The hood guard's wrap-around design combined with mesh front provides superior protection from debris and brush.



\* Not road legal.

## Find what fits

	1 FAMILY	2 FAMILY	3E SERIES	3R SERIES	4M SERIES	4R SERIES
Front Hitch w/ PTO	■	■		■	■	■
JD Quick Hitch	■	■ (2025R only)				
JD Quick Hitch Broom	■	■ (2025R only)				
JD Quick Hitch Blade	■	■ (2025R only)				
Wagon Hitch	■	■	■	■	■	■
Reversing Alarm				■	■	Standard
Rear Work Light	■	■		■		■
Additional Hydraulics	■	■	■	■	■	■
R1 Ag Tyres		■ (2036R only)	■	■	■	■
R3 Turf Tyres	■	■	■	■	■	■
R3 Turf Special Tyres				■	■	■
R3 Turf Radial Tyres		■				
R4 Industrial Tyres	■	■	■	■	■	■
Front Fenders				■	■	■
Rear Fender Extensions				■	■	■
Front Weights	■	■	■	■	■	■
Rear Wheel Weights	■	■	■	■	■	■
Hood Guard	■	■	■	■	■	■

## Specifications



	1023E	1025R	
	1E SERIES	1R SERIES	
<b>ENGINE</b>			
Type	3-Cylinder Diesel	3-Cylinder Diesel	
SAE J1995 Gross engine power at rated speed kW (hp) (Performance obtained and corrected in accordance with SAE J1995@ Revised December, 2013)	16 (21.5) at 3,200	17.8 (23.9) at 3,200	
Rated PTO kW (hp)	10.8 (14.5)	13.4 (18)	
Displacement, L	0.993	1.267	
Max Torque, Nm at RPM	47.7 at rated speed	55.2 at rated speed	
Air Cleaner	Dry Type w/ Safety Element	Dry Type w/ Safety Element	
Fuel Tank Capacity, L	21.2	21.2	
<b>DRIVETRAIN</b>			
Transmission – Hydro	2 range Hydro / Two Pedal Automatic	2 range Hydro / Two Pedal Automatic	
Max. Speed, km/h	14.6	14.6	
Brakes	Wet Disc	Wet Disc	
Steering	Power Steering	Power Steering	
Differential Lock	Standard	Standard	
4-Wheel Drive	Standard	Standard	
<b>HYDRAULIC SYSTEM</b>			
Type	Open Centre	Open Centre	
Total Flow, L/min	24.5	24.5	
Implement, L/min	13.2	13.2	
Steering, L/min	10.8	10.8	
<b>HITCH</b>			
Category 1 Rear 3pt Hitch	Standard	Standard	
Lift Capacity at Lift Points, kg	534	534	
Lift Capacity 610 mm (24 in.) Behind Lift Ends, kg	344	344	
<b>PTO</b>			
Type	Independent	Independent	
Location	Standard Rear/Mid and Optional Front	Standard Rear/Mid and Optional Front	
Speed	540 Rear	540 Rear	
Rotation	2100CCW Mid and Front	2100CCW Mid and Front	
Clutch / Brake	Wet Multi Disc	Wet Multi Disc	
<b>SAFETY</b>			
ROPS	Complies with ASAE, OSH Standards	Complies with ASAE, OSH Standards	
Operator Safety System			
– PTO Brake	Standard	Standard	
– Operator Present	Standard	Standard	
<b>DIMENSIONS</b>			
Total Length with 3pt Hitch, mm	2,750	2,750	
Total Width, mm	1,200	1,200	
Wheelbase, mm	1,450	1,450	
Height with ROPS, mm	2,288	2,288	
Weight Empty, kg	610	655	
Total Permissible Weight, kg	1,327	1,327	
Front Axle, kg	612	612	
Rear Axle, kg	715	715	
<b>TYRES</b>			
R1 Ag	– Front	–	–
	– Rear	–	–
R3 TURF	– Front	18 × 8.5 – 10 4PR	18 × 8.5 – 10 4PR
	– Rear	26 × 12 – 12 4PR	26 × 12 – 12 4PR
R3 TURF Radial	– Front	–	–
	– Rear	–	–
R4 Industrial	– Front	18 × 8.5 – 10 4PR	18 × 8.5 – 10 4PR
	– Rear	26 × 12 – 12 4PR	26 × 12 – 12 4PR

**2025R****2036R**

2R SERIES

2R SERIES

3-Cylinder Diesel

3-Cylinder Diesel, Turbocharged

17.8 (23.9) at 3,200

27.7 (37.1) at 2,600

13.4 (18)

22 (30)

1.267

1.5

62 at 1,625

120 at 1,800

Dry Type w/ Safety Element

Dry Type w/ Safety Element and restriction indicator light

24

32

2 range Hydro / Two Pedal Automatic

2 range Hydro / Two Pedal Automatic

19.8

26.7

Wet Disc

Wet Disc

Power Steering

Power Steering

Standard

Standard

Standard

Standard

Open Centre

Open Centre

26.5

35.2

13.2

20.2

13.2

15

Standard

Standard

560

946

400

615

Independent

Independent

Standard Rear/Mid and Optional Front

Standard Rear/Mid and Optional Front

540 Rear

540 Rear

2100CCW Mid and Front

2100CCW Mid and Front

Wet Multi Disc

Wet Multi Disc

Complies with ASAE, OSH Standards

Complies with ASAE, OSH Standards

Standard

Standard

Standard

Standard

2,808

2,875

1,200 – 1,280

1,280 – 1,400

1,600

1,725

2,364

2,370 – 2,380

775

1,100

1,712

2,400

612

880

1,100

1,800

–

7.00 – 12 4PR

–

12.4 – 16 6PR

23x8.5-12 4PR

23x8.5 – 14 4PR

12-16.5 4PR

14 – 17.5 4PR

220/55R12 4PR

200 / 60R15

280/70R16 4PR

300 / 70R20

23x8.5-12 6PR

23x8.5 – 14 4PR

12-16.5 6PR

14 – 17.5 4PR

## Specifications



	3038E	3033R	
	3E SERIES	3R SERIES	
<b>ENGINE</b>			
Type	3-Cylinder Diesel Turbocharged	3-Cylinder Diesel	
SAE J1995 Gross engine power at rated speed kW (hp) (Performance obtained and corrected in accordance with SAE J1995@ Revised December, 2013)	27.7 (37.1) at 2,600	24.2 (32.5) at 2,600	
ECE-R120 Net bare engine power at rated engine RPM kW (hp)	27.3 (36.6) at 2,600	24.1 (32.3) at 2,600	
ECE-R24 Net bare engine power at rated engine RPM kW (hp)	26.8 (35.9) at 2,600	23.1 (31) at 2,600	
Rated PTO kW (hp)	22 (29.5)	19 (25)	
Displacement, L	1.5	1.6	
Max Torque, Nm at RPM	120 at 1,680	107 at 1,200	
Air Cleaner	Dry Type w/ Safety Element and Restriction Indicator Light	Dry Type w/ Safety Element and Restriction Indicator Light	
Fuel Tank Capacity, L	28.5	Open Station – 51 / Cab – 45	
<b>DRIVETRAIN</b>			
Transmission – Gear	N/A	N/A	
Transmission – Hydro	Two Pedal Hydro Transmission	Two Pedal eHydro™ Transmission	
Max. Speed, km/h	24.9	30.6	
Clutch PowrReverser™	N/A	N/A	
Brakes	Wet Disc	Wet Disc	
Steering	Power Steering	Power Steering	
Differential Lock	Standard	Standard	
4-Wheel Drive	Standard	Standard	
<b>HYDRAULIC SYSTEM</b>			
Type	Open Centre	Open Centre	
Total Flow, L/min	35.2	52.5	
Implement, L/min	20.2	32.5	
Steering, L/min	15	20	
<b>HITCH</b>			
Category 1 Rear 3pt Hitch	Standard	Standard	
Lift Capacity at Lift Points, kg	N/A	1,148	
Lift Capacity 610 mm (24 in.) Behind Lift Ends, kg	615	999	
<b>PTO</b>			
Type	Independent	Independent	
Location	Standard Rear	Standard Rear, Mid* Standard and Front Optional	
Speed	540 Rear	540 Rear	
Rotation	N/A	1000CW, 1000CCW or 2100CCW All Engine Driven	
Clutch / Brake	Wet Multi Disc	Wet Multi Disc	
<b>SAFETY</b>			
ROPS / Cab	Complies with ASAE, OSH Standards	Complies with ASAE, OSH Standards	
Driver Safety System			
– PTO Brake	Standard	Standard	
– Operator Present	Standard	Standard	
<b>DIMENSIONS</b>			
Total Length with 3pt Hitch, mm	2,945	3,230	
Total Width, mm	1,446	1,323 – 1,728	
Wheelbase, mm	1,595	1,727	
Height with ROPS, mm	2,422	2,332 – 2,370	
Height with Cab, mm	N/A	2,257 – 2,278	
Weight Empty with ROPS / with Cab, kg	1,053	1,400 / 1,700	
Total Permissible Weight, kg	2,000	3,180	
Front Axle, kg	880	1,450	
Rear Axle, kg	1,200	2,000	
Towing Capacity, kg	2,500	4,000	
<b>TYRES</b>			
R1 Ag	– Front	7 – 14 6PR	180/95-14 6PR
	– Rear	11.2 – 24 6PR	11.2 – 24 6PR
R3 TURF	– Front	27 × 8.5 – 15 6PR	27 × 8.5 – 15 6PR
	– Rear	41 × 14 – 20 4PR	41 × 14 – 20 4PR
R3 TURF Special	– Front	–	25/10.50LLx15
	– Rear	–	41LL × 18 – 16.1 6PR
R4 Industrial	– Front	25 × 8.5 – 14 6PR	25 × 8.5 – 14 6PR
	– Rear	15 – 19.5 6PR	15 – 19.5 6PR
R4 Industrial	– Front	–	27 × 8.5 – 15 6PR
	– Rear	–	43 × 16 – 20 4PR

\* On PowrReverser optional.

**3038R**

3R SERIES

**3045R**

3R SERIES

3-Cylinder Diesel Turbocharged

27.7 (37.1) at 2,600

27.3 (36.6) at 2,600

26.6 (35.7) at 2,600

23 (30)

1.5

116 at 1,400

Dry Type w/ Safety Element and  
Restriction Indicator Light

Open Station – 51 / Cab – 45

12×12 PowrReverser

Two Pedal eHydro Transmission

30.6

Wet Multi-Disc

Wet Disc

Power Steering

Standard

Standard

Open Centre

52.5

32.5

20

Standard

1,148

999

Independent

Standard Rear, Mid\* Standard and Front Optional

540 Rear

1000CW, 1000CCW or 2100CCW All Engine Driven

Wet Multi Disc

Complies with ASAE, OSH Standards

Standard

Standard

3,230

1,323 – 1,728

1,727

2,332 – 2,370

2,257 – 2,278

1,400 / 1,700

3,180

1,450

2,000

4,000

180/95-14 6PR

11.2 – 24 6PR

27×8.50 – 15 6PR

41×14 – 20 4PR

25/10.50LLx15 6PR

41LL×18 – 16.1 6PR

25×8.5 – 14 6PR

15 – 19.5 6PR

27×8.5 – 15 6PR

43×16 – 20 4PR

3-Cylinder Diesel Turbocharged / Intercooler

32.8 (44.0) at 2,600

32.8 (44) at 2,600

31.7 (42.5) at 2,600

26 (35)

1.5

137 at 1,560

Dry Type w/ Safety Element and  
Restriction Indicator Light

Open Station – 51 / Cab – 45

N/A

Two Pedal eHydro Transmission

30.6

N/A

Wet Disc

Power Steering

Standard

Standard

Open Centre

52.5

32.5

20

Standard

1,148

999

Independent

Standard Rear, Mid\* Standard and Front Optional

540 Rear

1000CW, 1000CCW or 2100CCW All Engine Driven

Wet Multi Disc

Complies with ASAE, OSH Standards

Standard

Standard

3,230

1,323 – 1,728

1,727

2,332 – 2,370

2,257 – 2,278

1,400 / 1,700

3,180

1,450

2,000

4,000

180/95-14 6PR

11.2 – 24 6PR

27×8.50 – 15 6PR

41×14 – 20 4PR

25/10.50LLx15 6PR

41LL×18 – 16.1 6PR

25×8.5 – 14 6PR

15 – 19.5 6PR

27×8.5 – 15 6PR

43×16 – 20 4PR

## Specifications



	4049M	4066M	
	4M SERIES	4M SERIES	
<b>ENGINE</b>			
Type	4-Cylinder Diesel Turbocharged	4-Cylinder Diesel Turbocharged / Intercooler with Diesel Particulate Filter	
SAE J1995 Gross engine power at rated speed kW (hp) (Performance obtained and corrected in accordance with SAE J1995@ Revised December, 2013)	36 (48.3) at 2,600	48.5 (65.0) at 2,600	
ECE-R120 Net bare engine power at rated engine RPM kW (hp)	36.2 (48.5) at 2,600	48.5 (65) at 2,600	
Rated Engine kW (hp), ECE-R24 at engine RPM	33.5 (44.9) at 2,600	46.6 (62.5) at 2,600	
Rated PTO kW (hp)	27.5 (36.9)	40.2 (54)	
Displacement, L	1.995	2.091	
Max Torque, Nm at RPM	156 at 1,700	207 at 1,690	
Air Cleaner	Dry Type, Two Stage	Dry Type, Two Stage	
Fuel Tank Capacity, L	Open Station – 49.2	Open Station – 49.2	
<b>DRIVETRAIN</b>			
Transmission – Gear	12×12 PowrReverser	12×12 PowrReverser	
Transmission – Hydro	Two Pedal eHydro™ Transmission	Two Pedal eHydro Transmission	
Max. Speed, km/h	32.8	32.8	
Clutch PowrReverser™	Wet Disc	Wet Disc	
Brakes	Wet Disc	Wet Disc	
Steering	Power Steering	Power Steering	
Differential Lock	Standard	Standard	
4-Wheel Drive	Standard	Standard	
<b>HYDRAULIC SYSTEM</b>			
Type	Open Centre	Open Centre	
Total Flow, L/min	60.2	60.2	
Implement, L/min	38.7	38.7	
Steering, L/min	21.5	21.5	
<b>HITCH</b>			
Category 1 Rear 3pt Hitch	Standard	Standard	
Lift Capacity at Lift Points, kg	1,420	1,420	
Lift Capacity 610 mm (24 in.) Behind Lift Ends, kg	1,134	1,134	
<b>PTO</b>			
Type	Independent	Independent	
Location	Standard Rear / Front Optional	Standard Rear / Front Optional	
Speed	540 Rear	540 Rear	
Rotation	1000CW, 1000CCW or 2100CCW All Engine Driven	1000CW, 1000CCW or 2100CCW All Engine Driven	
Clutch / Brake	Wet Disc	Wet Disc	
<b>SAFETY</b>			
ROPS / Cab	Complies with ASAE, OSH Standards	Complies with ASAE, OSH Standards	
Operator Safety System			
– PTO Brake	Standard	Standard	
– Operator Present	Standard	Standard	
<b>DIMENSIONS</b>			
Total Length with 3pt Hitch, mm	3,318	3,318	
Total Width, mm	1,806 – 1,987	1,806 – 1,987	
Wheelbase, mm	1,854	1,854	
Height with ROPS, mm	2,545	2,545	
Height with Cab, mm	N/A	N/A	
Weight Empty with ROPS / with Cab, kg	1,710 / N/A	1,710 / N/A	
Total Permissible Weight, kg	4,000	4,000	
Front Axle, kg	1,600	1,600	
Rear Axle, kg	2,400	2,400	
Towing Capacity, kg	5,000	5,000	
<b>TYRES</b>			
R1 Ag	– Front	8-16 6PR	8-16 6PR
	– Rear	13.6 – 28 4PR	13.6 – 28 4PR
R3 TURF	– Front	27×10.50 – 15 4PR	27×10.50 – 15 4PR
	– Rear	44×18-20 4PR	44×18-20 4PR
R3 TURF Special	– Front	27×12LL – 15 6PR	27×12LL – 15 6PR
	– Rear	22.5LL – 16.1 6PR	22.5LL – 16.1 6PR
R4 Industrial	– Front	10-16.5 6PR	10-16.5 6PR
	– Rear	16.9-24 6PR	16.9-24 6PR

**4049R**

4R SERIES

**4066R**

4R SERIES

4-Cylinder Diesel  
Turbocharged

36 (48.3) at 2,600

36.2 (48.5) at 2,600

33.5 (44.9) at 2,600

27.5 (36.9)

1.995

156 at 1,700

Dry Type, Two Stage

Cab – 52

N/A

Two Pedal eHydro Transmission

32.8

N/A

Wet Disc

Power Steering

Standard

Standard

Open Centre

60.2

38.7

21.5

Standard

1,420

1,134

Independent

Standard Rear / Front Optional

540 Rear

1000CW, 1000CCW or 2100CCW All Engine Driven

Wet Disc

Complies with ASAE,  
OSH Standards

Standard

Standard

3,318

1,806 – 1,987

1,854

N/A

2,474

N/A / 2,120

4,000

1,600

2,400

5,000

8-16 6PR

13.6 – 28 4PR

27×10.50 – 15 4PR

44×18-20 4PR

27×12LL – 15 6PR

22.5LL – 16.1 6PR

10-16.5 6PR

16.9-24 6PR

4-Cylinder Diesel  
Turbocharged / Intercooler with Diesel Particulate Filter

48.5 (65.0) at 2,600

48.5 (65) at 2,600

46.6 (62.5) at 2,600

40.2 (54)

2.091

207 at 1,690

Dry Type, Two Stage

Cab – 52

N/A

Two Pedal eHydro Transmission

32.8

N/A

Wet Disc

Power Steering

Standard

Standard

Open Centre

60.2

38.7

21.5

Standard

1,420

1,134

Independent

Standard Rear / Front Optional

540 Rear

1000CW, 1000CCW or 2100CCW All Engine Driven

Wet Disc

Complies with ASAE,  
OSH Standards

Standard

Standard

3,318

1,806 – 1,987

1,854

N/A

2,474

N/A / 2,120

4,000

1,600

2,400

5,000

8-16 6PR

13.6 – 28 4PR

27×10.50 – 15 4PR

44×18-20 4PR

27×12LL – 15 6PR

22.5LL – 16.1 6PR

10-16.5 6PR

16.9-24 6PR

# The NEW 5R

Compact can do more



**JOHN DEERE**

This literature has been compiled for worldwide circulation. While general information, pictures and descriptions are provided, some illustrations and text may include finance, credit, insurance, product options and accessories NOT AVAILABLE in all countries or regions. In some countries, products and accessories may require modifications or additions to ensure compliance with the local regulations of those countries. PLEASE CONTACT YOUR LOCAL DEALER FOR DETAILS. John Deere reserves the right to change specification and design of all products described in this literature without notice. John Deere's green and yellow colour scheme, the leaping deer symbol, and JOHN DEERE are trademarks of Deere & Company. All photography and illustrations contained herein are copyrighted assets of Deere & Company.

[JohnDeere.com.au](http://JohnDeere.com.au)  
[JohnDeere.co.nz](http://JohnDeere.co.nz)