

# New WorkShop Aluminium & Steel Work



## Company Profile





## Index

- 1. Company in Words.**
- 2. Company Organization Chart.**
- 3. Company Quality Policy.**
- 4. Projects History.**
- 5. Previous Approvals.**
- 6. Excalibur Brand Range.**
- 7. Excalibur in Images.**
- 8. Company Brochure.**

# New WorkShop Aluminium & Steel Work



## Company in Words

**New Workshop Aluminium & Steel Works** was established to offer GCC Contractors the option of buying high quality balanced-action access covers from a local manufacture.

Despite the establishment's young age 2007, its highly experienced management, staff and technicians were able to quickly establish a high quality reputation in the market by meeting their clients specific requirements and illustrating that their products meet the challenges of handling the harsh environment of the region at a competitive cost.



Access covers manufactured in our yard all comes with a one year warranty, extendable to two years on certain products. All products are designed to meet or exceed international standards and specifications.

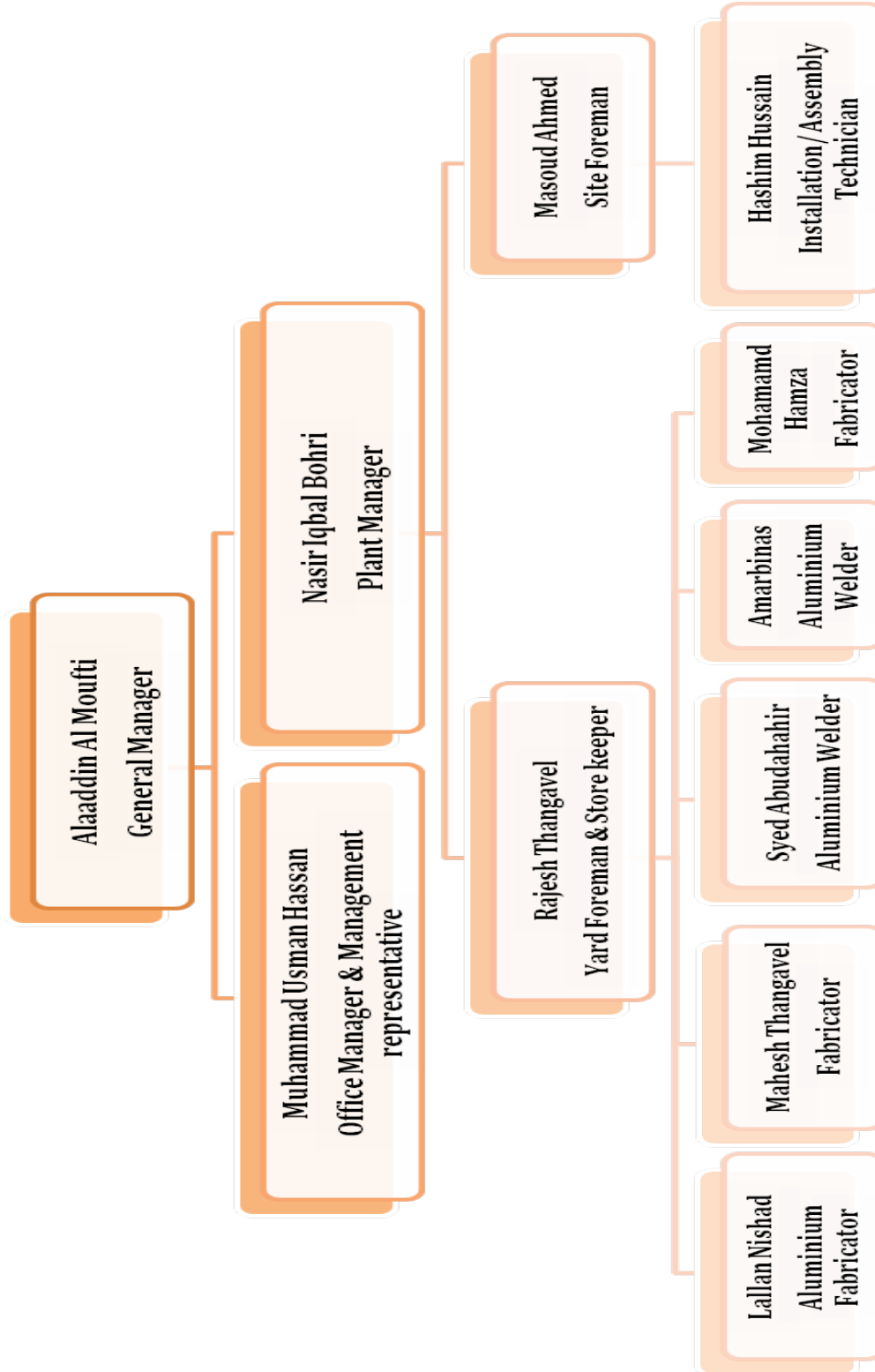


Offer many different standard models of access covers and ladders, most of which can be modified to meet your specific requirements.

Being a U.A.E. based manufacturer, we can meet these types of "Special" requirements without the adverse delivery delay and maintenance issues faced when dealing with international manufacturer.

Our goal is to be recognized as one of the few specialized establishments for regionally designed and fabricated balanced-action access covers and to grow our excellent reputation by meeting your highest expectations.

# New WorkShop Aluminium & Steel Work



# New WorkShop Aluminium & Steel Work



## QUALITY POLICY

It is the policy of **NEW WORKSHOP ALUMINIUM & STEEL WORKS** that our establishment operates with a consistent level of work performance that meets or exceeds the quality requirements of the customer including statutory and regulatory requirements.

We are committed to providing continuous effort to identify and eliminate any defects or discrepancies and to continually improving the effectiveness of our quality management system.

In order to achieve said policy we shall:

Implement a quality management system conforming to ISO 9001:2008.

Identify and control the production process and product effectively.

Ensure the availability of human resources that are capable of meeting the challenges and who fully accept their responsibilities and encourage the Quality Culture within the establishment and the staff.

Monitor measures and analyze the progress in every aspect.

Minimize the number of defects /complaints.

Take action to achieve all targets and continuously improve the system.

Acknowledge that our employees are the key to achieving our policy.

Commit to investing in our employees and continue our pursuit of meeting their expectations and rewarding them commensurate with their achievements.

The quality policy shall be communicated and understood within the company and made available to all employees who have a direct bearing on quality within

**NEW WORKSHOP ALUMINIUM & STEEL WORKS**

This policy and its effectiveness will be regularly reviewed for its suitability and revised accordingly if required.

---

General Manager



# New WorkShop Aluminium & Steel Work



## Projects History

S. No.	Project Name	Client	Consultant	Contractor	Year	Value in Dhs.
1	Masdar Institute of Science	Masder City	Foster & Partners.	A.C.C.	2012	95,000.00
2	Contract O-1191	ADSSC	Aecom	Nael Bin Harmal	2012	145,000.00
3	Contract 391 – Al Ain	Al Ain Municipality	Eng. Associated	Saif Bin Darwish	2012	75,000.00
4	MW – OU – 272 - 2009	Armed Forces	Armed Forces	Combined Group	2012	530,000.00
5	Contract 383	PRFD	KEO	Al Jurf	2012	160,000.00
6	Operation & Maintenance 101	PRFD	Parsons	Al Jurf	2012	85,000.00
7	Upgrading Salam Street	Abu Dhabi Municipality	Parsons	Samsung	2012	95,000.00
8	ADNOC Head Office Building	ADNOC	Hill International	Six Co.	2011	50,000.00
9	ADNOC Distribution	ADNOC	AITurath	Ali Moosa	2011	150,000.00
10	Presidential Palace	Privet Department	Parsons	Al Jurf	2011	100,000.00
11	Crown Prince Court	Crown Price Depart.	Dorsch	Al Ryum	2011	50,000.00
12	PRFD Contract 480	PRFD, Abu Dhabi	Dorsch	Royal Gardens	2011	400,000.00
13	Safran Forest Belt	PRFD	Dorsch	AlDhafra Irrigation	2011	165,000.00
14	Sadiyyat Beach Villas	TDIC	White - Young	Al Jaber	2011	1,200,000.00
15	O. & M. Contracts 1 & 2 Al Ain	Al Ain Municipality	Diwi Consult	Nael Energy	2011	450,000.00
16	VIP Villas Complex			Belhasa	2011	50,000.00
17	Ruwais Housing Complex expansion Ph 3, New Hospital	ADNOC	HM Hospital Management	Al Muraikhi	2010	80,000.00
18	New Pumping Stations at Rawdat Al Reef Palace	PRFD	Dorsch	Al Ryum Cont.	2010	30,000.00
19	Ruwais Housing Complex expansion Ph 3, 21 Building	ADNOC	AITurath Enginee	Al Jaber	2010	250,000.00
20	Emarati Housing Community Yas Island Phase 1	Al Dar Property	Professional Arabian Consult.	N.P.C.	2010	95,000.00
21	55 Villas Project MBZ City	Burooj Property	Ramahi	Tiger Contracting	2010	70,000.00
22	Presidential Flight State Guest Reception Terminal	Presidential Flight	HOCHTIEF-AUH	Six Construct	2010	30,000.00
23	Al Dar Villas (Yas Island)	Al Dar		DEPA	2010	120,000.00
24	PRFD Contract 480	PRFD, Abu Dhabi	Dorsch	Royal Gardens	2010	725,000.00
25	Dubai World Center Int. Airport	Dept. of Civil Aviation	Dar Alhandasa	Hadeed Emirates	2010	45,000.00
26	PRFD Contract 906	PRFD, Abu Dhabi	Dorsch	Royal Gardens	2010	40,000.00
27	Slumberger Accommodation	Slumberger		Amana	2010	25,000.00
28	Hailiyya Roads	Abu Dhabi Municipality	Italconsult	Bin Hafeez	2009	120,000.00
29	Raha Beach Phase 1	Al Dar	Dorsch-Aecom	Belhasa	2009	1,100,000.00
30	Mirdef City Center	AFM		ALEC	2009	20,000.00
31	Qasr Al Sarab	TDIC		ALEC	2009	45,000.00
32	Yas Island Racing Track	Al Dar	Tilka	KAR-FTA W.L.L.	2009	350,000.00
33	Shams Abu Dhabi	Soroh	Hill International	Al Geemi	2009	20,000.00
34	Adnoc Filling Station	Adnoc	Diar Consult	Eastern Intr.	2009	25,000.00
35	Al Raha Beach Development	Al Dar	Cansult-Maunsell	ADMAC	2009	65,000.00
36	Shooting Club, Abu Dhabi	Privet Dept.	W. S. Atkins	Fibrex	2009	125,000.00
37	Reem Island 5 Towers	Tamouh	GDP International	I.S.Z.L.	2009	275,000.00
38	Contract O - 1044	ADSSC	Parsons	Eagle Electrome.	2009	120,000.00
39	Highland Resort Villas W51	MIDMAC Property	W. S. Atkins	N. P. C.	2009	590,000.00

# New WorkShop Aluminium & Steel Work



40	Al Reef Project	Manazel Property	Dar Al Handasa	Fibrex	2009	1,450,000.00
41	Military Base	U.A.E. Armed Forces	Engineering Section	Golf Turrets	2008	15,000.00
42	Gulf Gardens villa complex	Residential Committee	Otak	Pivot	2008	85,000.00
43	Tabreed Al Kifaf Cooling Plant – Metro Dubai MD-04	Tabreed	Adnan Safarini	SNC Lavalin Gulf Contractor	2008	16,000.00
44	Mushref Gardens	Privet Department		Square	2008	124,000.00
45	Towne Square – Al Ain	Al Ain Municipality	Gibb	Envicon	2008	14,000.00
46	Tabreed Barsha Cooling Plant – Metro Dubai MD-05	Tabreed	Adnan Safarini	SNC Lavalin Gulf Contractor	2008	16,000.00
47	Danat Abu Dhabi	Al Qudra	Maunsell/Aecom	The National Co.	2008	15,000.00
48	Intercontinental Hotel	Hotel	N/A	Al Sahel	2008	33,000.00
49	H.H. Sk. Zayed Mosque	Abu Dhabi Municipality	Parsons	Al Jurf	2008	135,000.00
50	Al Salamat S100	Residential Committee	Dorsch	Ghantoot	2008	150,000.00
51	Tabreed Rashidiya Cooling Plant – Metro Dubai MD-03	Tabreed	Adnan Safarini	SNC Lavalin Gulf Contractor	2008	16,000.00
52	Shooting Club, Abu Dhabi	Privet Dept.	W. S. Atkins	Fibrex	2008	46,000.00
53	Contract 959	P.G.D.	Parsons	Royal Gardens	2008	143,000.00
54	Shams Abu Dhabi	Soroh	Hill International	Al Geemi	2008	52,000.00
55	Adnoc Filling Station	Adnoc	Diar Consult	Rawafed	2008	25,000.00
56	Bawadi Mall	Nael Investment	Shanclan Cox	Nael Bin Harmal	2008	75,000.00



## Excalibur Brand Range

### I.) Excalibur EXU Model, Up-Stand Type Balanced Action Access Covers:

External type access covers manufactured in Aluminium or Stainless Steel to various load classes. It comes in single or multi lids and with fixed or removable intermedian beams.

- Polyester powder coating to standard RAL colors is optional.
- Safety Grill & Chains are optional.
- Many locking & opening options are available.
- Fire Rating options are available.

### II.) Excalibur EXF Model Flushed Type Balanced Action Access Covers:

External/Internal type access covers manufactured in Aluminium or Stainless Steel to various load classes. It comes with single or multiple lids with fixed intermedian Beams.

- Polyester powder coating to standard RAL colors is optional.
- Safety Grill & Chains are optional.
- Many locking & opening options are available.
- Fire Rating options are available.

### III.) Excalibur EXR Model, Roof Type Balanced Action Access Covers:

External type access covers manufactured in Aluminium or Stainless Steel to a load Class of 5kn/m<sup>2</sup>. Both lid & frame are sandwich type with insulation layer to Minimize weather effect.

- Polyester powder coating to standard RAL colors is optional.
- Many locking & opening options are available.

### IV.) Excalibur EXTH MODEL, Recessed Type Hinged Balanced Action Access Covers:



# New WorkShop Aluminium & Steel Work



External/Internal type access covers manufactured in Aluminium to various load classes. It comes with single hinged lid and infill depth between 1mm to 40mm,

- Polyester powder coating to standard RAL colors is optional.
- Safety Grill & chains are optional.
- Many locking & opening options are available.

## V.) Excalibur EXTD Model, Recessed Drop-In Type Access Covers:

External/Internal recessed drop-in type access covers manufactured in Aluminium or Stainless Steel to various load classes. It comes with single or multi lids and with infill depth between 1mm to 100mm.

- Polyester powder coating to standard RAL colors is optional.
- Brass Edges are optional.

## VI.) Excalibur EXD Model, Chequered Plate Type Access:

External/Internal drop in chequered plate type duct access manufactured in Aluminium or Stainless steel to pedestrian load class. It comes in single lid as a Manholes cover & frame or in multi lids as a duct channel cover and frame.

- Polyester powder coating to standard RAL colors is optional.
- Custom made designs to suit site conditions.
- Hinging is optional-Model EXD-Hinged

## VII.) Excalibur EXG Model, Gratings & Frames:

External/Internal type Grating & Frame or Grating Platform manufactured in Aluminium or Stainless Steel to various loads Classes.

- Polyester powder coating to standard RAL colors is optional.
- Anodizing is Optional.

## VIII.) Excalibur EXS Model, Access Covers:

Custom made access covers & frames to suit sites special requirements.

# New WorkShop Aluminium & Steel Work



## IX.) Excalibur EXWP Model, Wall Panel Access:

Internal type wall access panel manufactured in Aluminium or Stainless Steel with Solid lid or recessed lid suitable for gypsum board fixing.

- Polyester powder coating to standard RAL colors is optional.
- Many locking & opening options are available.

## X.) Excalibur EXCP Model, Ceiling Panel Access:

Internal Type ceiling access panel manufactured in Aluminum with gypsum board lid.

- Polyester powder coating to standard RAL colors is optional.

## XI.) Excalibur EXL Model, Cat Ladder:

External/Internal type cat ladder manufactured in Aluminum or Stainless Steel to suit your site conditions.

- Polyester powder coating to standard RAL colors is optional.
- Wall or Floor mounting options available.
- Safety Cages are Optional.

## XII.) Excalibur EXV Model, Air Vents:

External type air vents manufactured in Aluminum or Stainless Steel to suit your Site conditions.

- Polyester powder coating to standard RAL colors is optional.
- Floor Mounting or Cast-In options are available.
- Cast Aluminum options are Available.

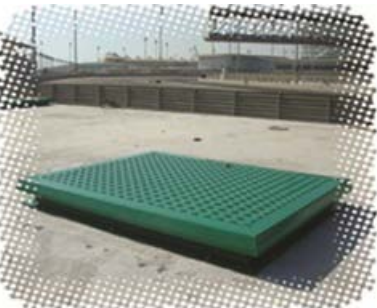
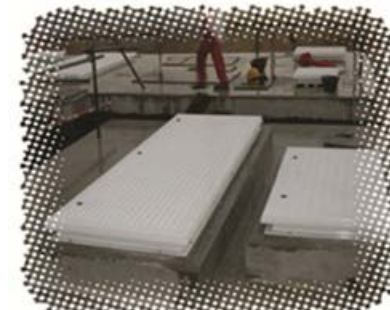
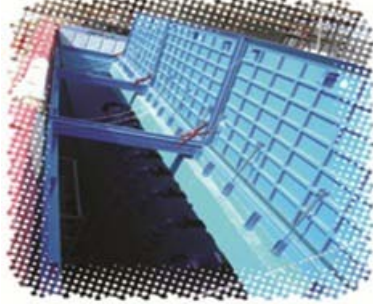
# New WorkShop Aluminium & Steel Work



## Company in Images

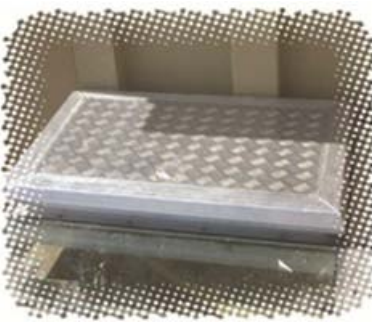
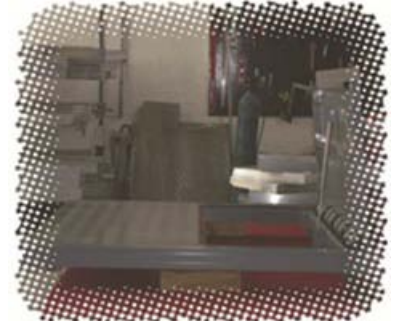
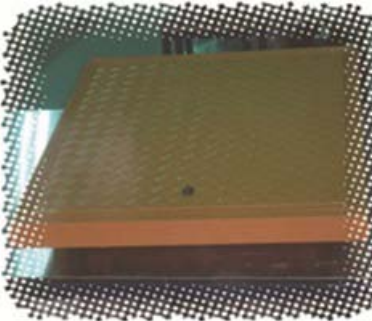
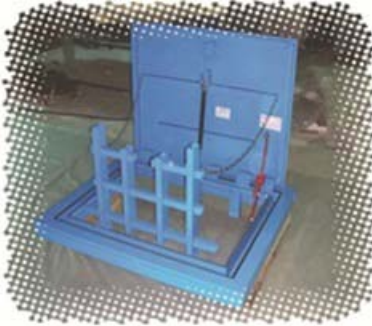


# New WorkShop Aluminium & Steel Work



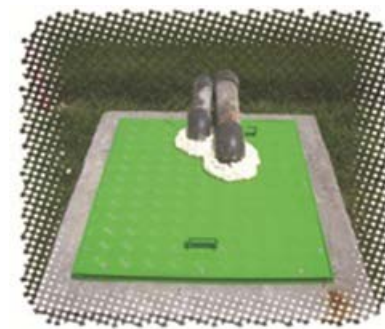
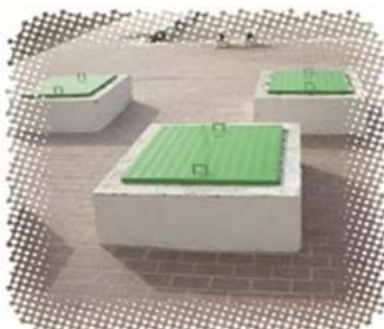
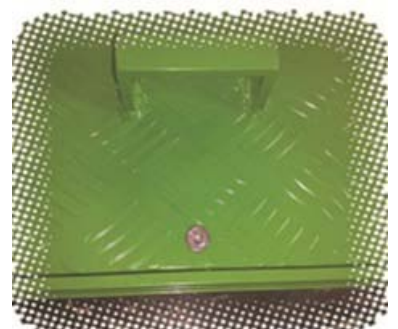
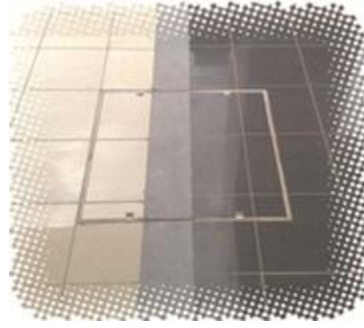
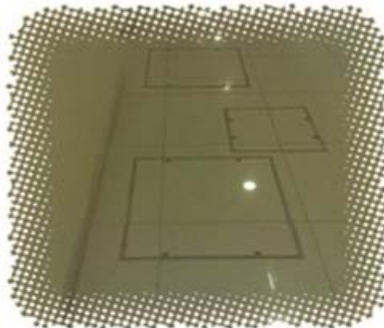
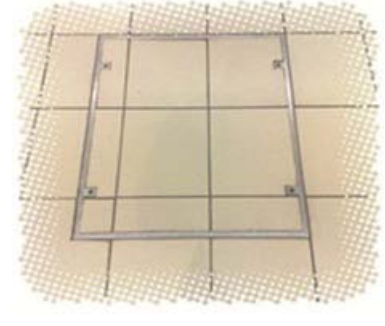
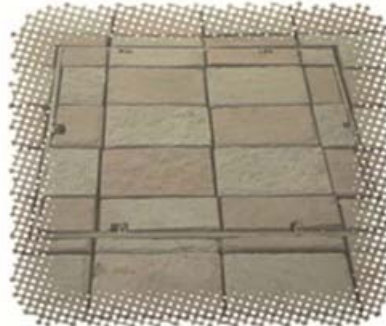
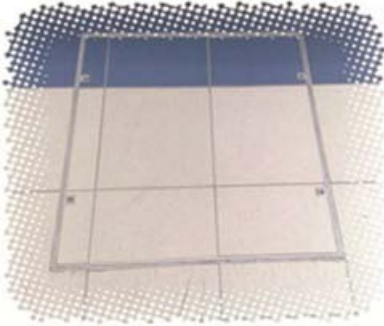


# New WorkShop Aluminium & Steel Work



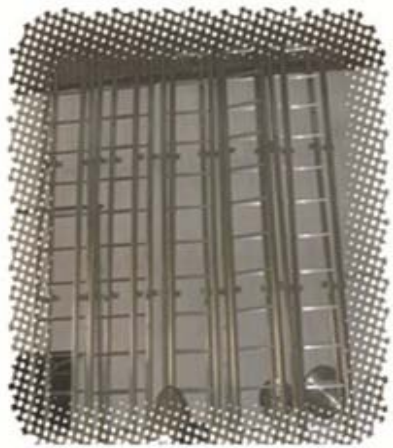
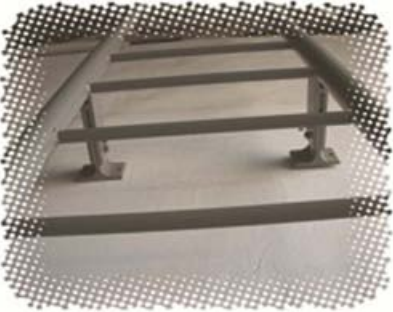


# New WorkShop Aluminium & Steel Work





# New WorkShop Aluminium & Steel Work





# New WorkShop Aluminium & Steel Work

