

The logo for KASCO is presented within a rectangular, light blue metallic-looking frame with a brushed texture and a slight 3D effect. The letters 'K A S C O' are displayed in a bold, yellow, sans-serif font, spaced evenly across the frame.

K A S C O

Company Profile

**Large-Diameter Seamless Pipe
Manufacturer**

Contents

1. Introduction	
2. Company Information	1) General Information
	2) Location and Branch Office
	3) Investment Companies
3. Company Organization	
4. Production Range and Capacity	1) Production Capacity
	2) Production Range
5. Production Flow Chart	
6. Manufacturing Facilities	1) Production and Inspection Facilities
	2) Test Equipment in Laboratory
7. Application	
8. Reference	1) Awarded order of Materials
	2) Awarded order of Country
	3) Details of reference
9. Quality Certification	1) ISO 9001 : 2008 Certificate
	2) PED Certificate
	3) KEPIC MN Certificate

1. Introduction

KASCO has been established to get best solution for Large bore Seamless pipes by increasing customer's need in Power generation, Petrochemical and Refinery plant !

We are pursuing the Customer Orientation in Management, Quality and Production for Customer's satisfaction.

Let us contribute to your special solution of Cr-Mo Alloy Large bore Seamless pipes.

That is why we are here !



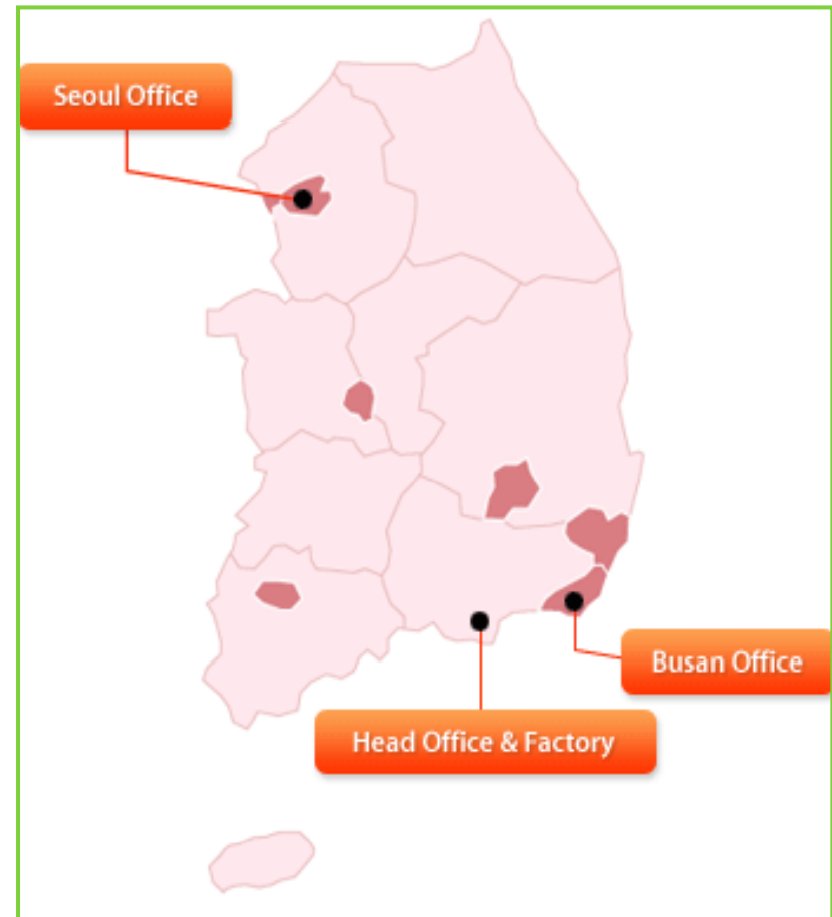
2. Company Information

1) General Information

Name	KASCO
Start Production	December, 2008
Paid-in Capital	USD 5 million
Major Shareholder	Keonwoo Metals 41%(Korea), Sumikin Bussan 19(Japan), Atomtech Energy & Industrials 40%(Taiwan),
Employee	15
Area	Total : 8,374.5 m ² , Floor Space : 3,150 m ²
Nearest Airport	Sacheon, 4km from Airport
Nearest Seaport	Busan 100km from Seaport
Telephone	+82-55-852-6102
Telefax	+82-55-852-6103
E-mail	kascosteel@kascosteel.com
Web-site	www.kascosteel.com

2) Location and Branch Office

Head Office & Factory	894, Yucheon-ri, Sanam-myeon, Sacheon-si, Gyeongsangnamdo, Korea Tel) +82-55-852-6102 Fax) +82-55-852-6103
Seoul Office	1904, LG Twintel I 157-8, Samsung-dong, Kangnam-gu, Seoul, Korea Tel) +82-2-561-6078 Fax) +82-2-569-3627
Busan Office	1501-6, Miumm-dong, Kangseo-ku, Busan, Korea Tel) +82-51-941-6078 Fax) +82-51-941-6079



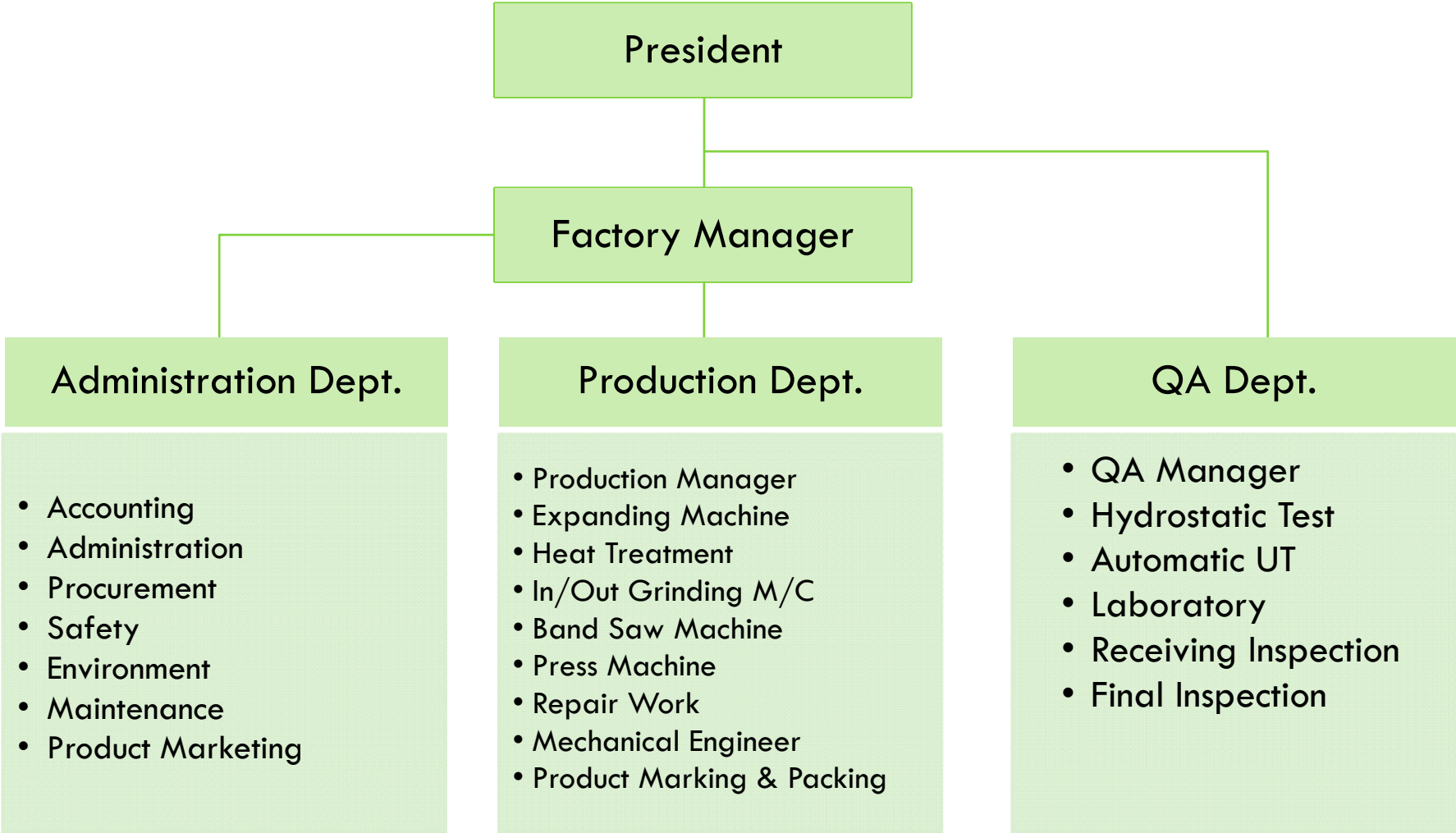
3) Investment Companies

Corporate Name	Sumikin Bussan Corporation
Head Office	(Osaka Head Office) 2-7, Nakanoshima 2-chome, Kita-ku, Osaka 530-8332 Japan
	(Tokyo Head Office) 5-27, Akasaka 8-chome, Minato-ku, Tokyo 107-8527 Japan
Paid-in Capital	JPY12,335 million (USD134.5 million) – (@JPY100=USD1.09)
Line of Business	Marketing and import/export of steel, machinery and metals, textiles, foodstuffs and others.
Establishment	1941 year
Ownership	Sumitomo Metal Ind.: 38.2% / Trust banks (4companies) : 12.7% Others : Listed stock in Tokyo 1 st stock Market
Turn Over / Profit (Before tax)	JPY1,177 billion (USD9,976 million) / JPY18,082 million (USD153.2 million) – 2007
Employee	873 employees
Web site	www.sumikinbussan.co.jp

Corporate Name	Keonwoo Metals Co., Ltd.
Head Office	1904, LG Twintel I, 157-8, Samsung-dong, Kangnam-gu, Seoul, Korea
Paid-in Capital	KRW 100,000 thousand (USD72.5 thousand) – (@KRW1,380=USD1.00)
Line of Business	Marketing and import/export of welded and seamless steel, stainless, alloy pipe and others.
Establishment	1996 year
Ownership	T.G. Woo 100%
Turn Over / Profit (Before tax)	KRW37,290 million (USD29 million) / KRW4,390 million (USD3.49 million) -2008
Employee	10 employees
Web site	www.keonwoometals.com

Corporate Name	Atomtech Energy & Industrials Co., Ltd
Head Office	Bldg. C. 20F, No.92, Sec.1, Hsin-Tai 5 th RD. Hsichih, Taipei Country, Taiwan, R.O.C
Paid-in Capital	TWD 421 million (USD12.7 million) – (@TWD1=USD0.03)
Line of Business	Conventional Power Plants, Co-generation Plants, Alternative Power, Nuclear Power Plants, Incineration Plants, environmental & Pollution Control, Petrochemical, Water Treatment Plants, Civil And Infra-structure, Solar
Establishment	2002 year
Ownership	Global Energy Investment 40.62%, Atom Energy Develop & Invest 27.08% Infopower Universal Holding 13.54%
Turn Over / Profit (Before tax)	TWD1,191 million (USD35.7 million) / TWD 37.5 million (USD1.12 million) – 2007
Employee	80 employees
Web site	www.atemtech.com.tw

3. Company Organization



4. Production Capacity and Range

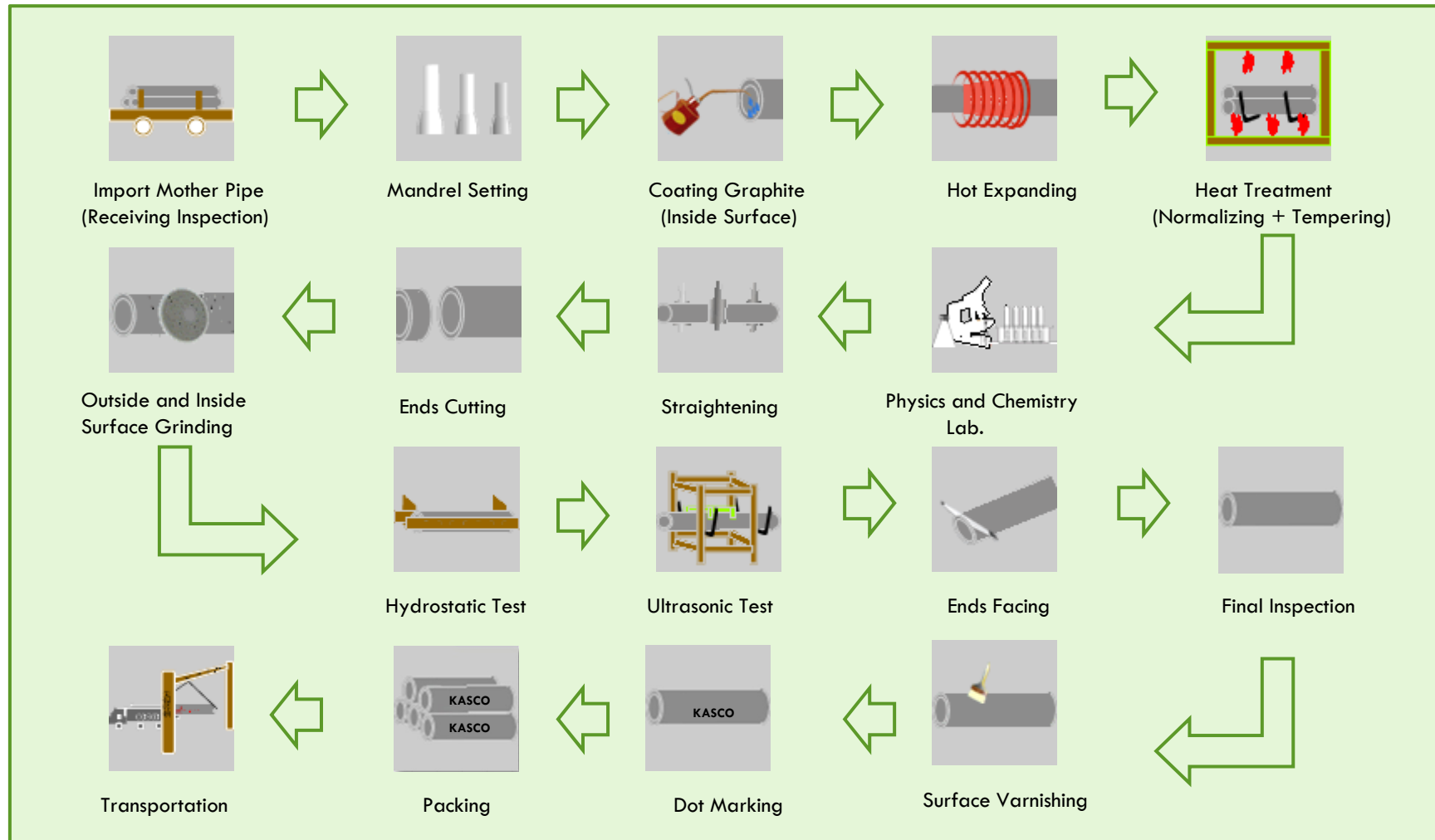
1) Production Capacity

Material	ASTM/ASME A335/SA335 P91, P9, P5, P22 ,P11 (Cr-Mo Alloy Steel) ASTM/ASME A333/SA333 GR.6 (Carbon Steel) A106/SA106 GR.B (Carbon Steel)
Production Size	OD 18 inch ~ OD 34 inch
Production Length	4 Meter ~ 12 Meter
Monthly Production Capacity	1 st year (2009) 3,600 Ton (300 Ton) 2 nd year (2010) 7,200 Ton (600 Ton) 3 rd year (2011) 8,000 Ton (670 Ton) 4 th year (2012) 12,000 Ton (1000 Ton) 5 th year (2013) 16,000 Ton (1350 Ton)

2) Production Range

Inch /mm	OD (mm)	9.53	17	18	19	20	22	23	25	26	27	28	29	30	31	33	35	36	38	40	41	Remarks
18 450	457.2	105.21	184.54	194.95	205.31	215.63	236.10	246.27	266.45	276.47	286.44	296.35	306.22	316.04	325.81	345.21	364.40	373.92	392.82	411.53	420.80	* Wall Th'k : mm * Weight : Kg/m
20 500	508.0	117.15	205.84	217.50	229.12	240.68	263.66	275.08	297.77	309.04	320.26	331.43	342.55	353.62	364.65	386.55	408.25	419.02	440.43	461.64		
22 550	558.8	129.08	227.13	240.05	252.92	265.74	291.22	303.90	329.09	341.61	354.08	366.51	378.88	391.21	403.48	427.89	452.09	464.12	488.03			
24 600	609.6	141.02	248.43	262.60	276.72	290.79	318.78	332.71	360.41	374.18	387.91	401.58	415.21	428.79	442.32	469.23	495.94	509.22				
26 650	660.4	152.96	269.73	285.15	300.52	315.85	346.34	361.52	391.72	406.75	421.73	436.66	451.54	466.37	481.15	510.57	539.78					
28 700	711.2	164.90	291.02	307.70	324.32	340.90	373.90	390.33	423.04	439.32	455.55	471.74	487.87	503.95	519.99							
30 750	762	176.84	312.32	330.25	348.13	365.95	401.46	419.15	454.36	417.89	489.39	506.81	524.20	541.53	558.82							
32 800	812.8	188.78	333.62	352.80	371.93	391.01	429.02	447.96	485.68	504.46	523.20	541.89	560.53	579.12								
34 850	863.6	200.71	354.91	375.34	395.73	416.06	456.58	476.77	517.00	537.04	557.03	576.97										

5. Production Flow Chart



6. Manufacturing Facilities

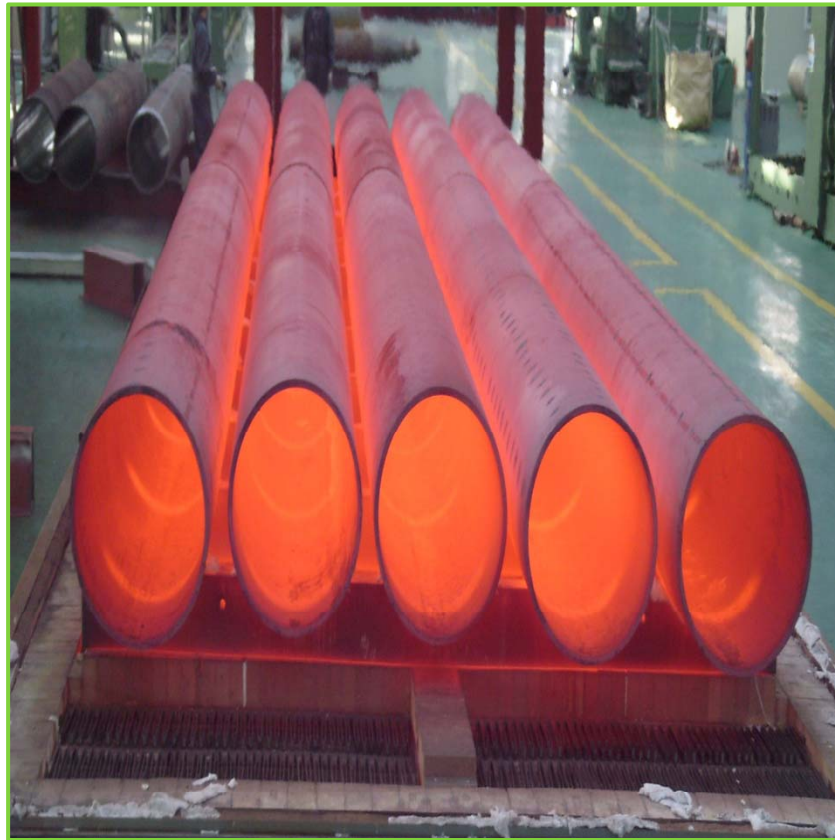
1) Production and Inspection Facilities

No	Facilities	Quantity	Note
1	Hot Expanding M/C and Mandrel	2	NB18" ~ NB34"
2	Heat Treatment Furnace	1	W3.2M × L13M × 1.5M 900 Kw
3	Press M/C for Straightness	2	400 Ton & 2,500 Ton
4	Band Saw M/C	1	Max. Φ750mm
5	Internal Grinding M/C	2	
6	External Grinding M/C	1	
7	Automatic Ultrasonic Test M/C	1	Max. 12M
8	Hydrostatic Test M/C	1	4M ~ 12M
9	End Facing M/C	1	CNC, Compound Beveling
10	Marking M/C	1	Dot Type

Hot Expanding Process by Intermediate High Frequency



Cover Open type Heat Treatment Furnace



Keeping Straightness by Press

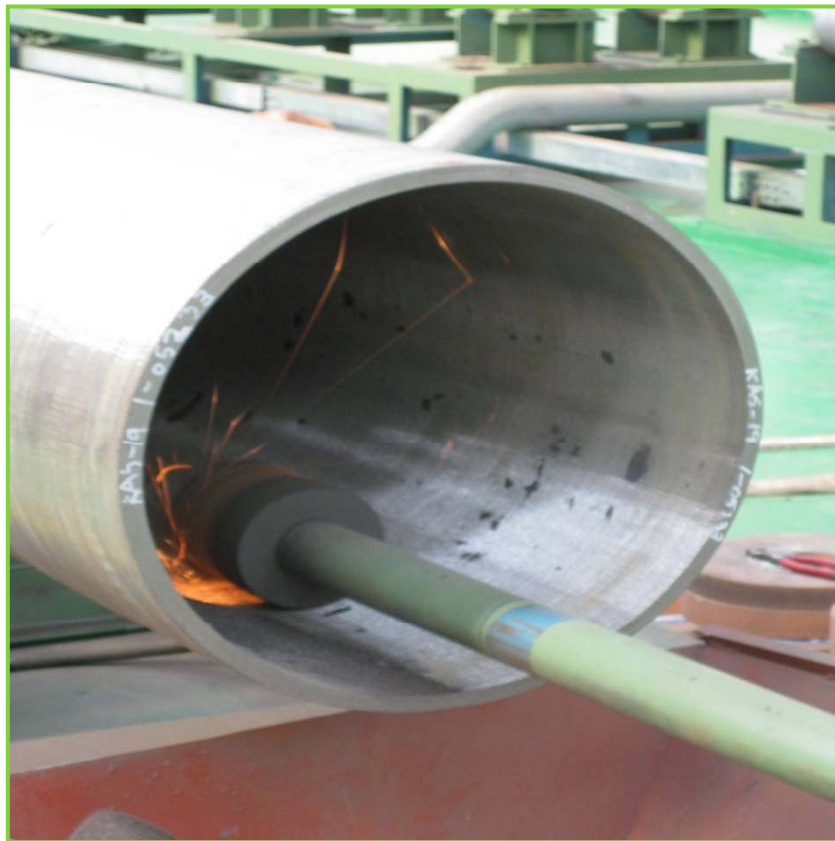
① 400 Ton



② 2,500 Ton



Inside Grinding



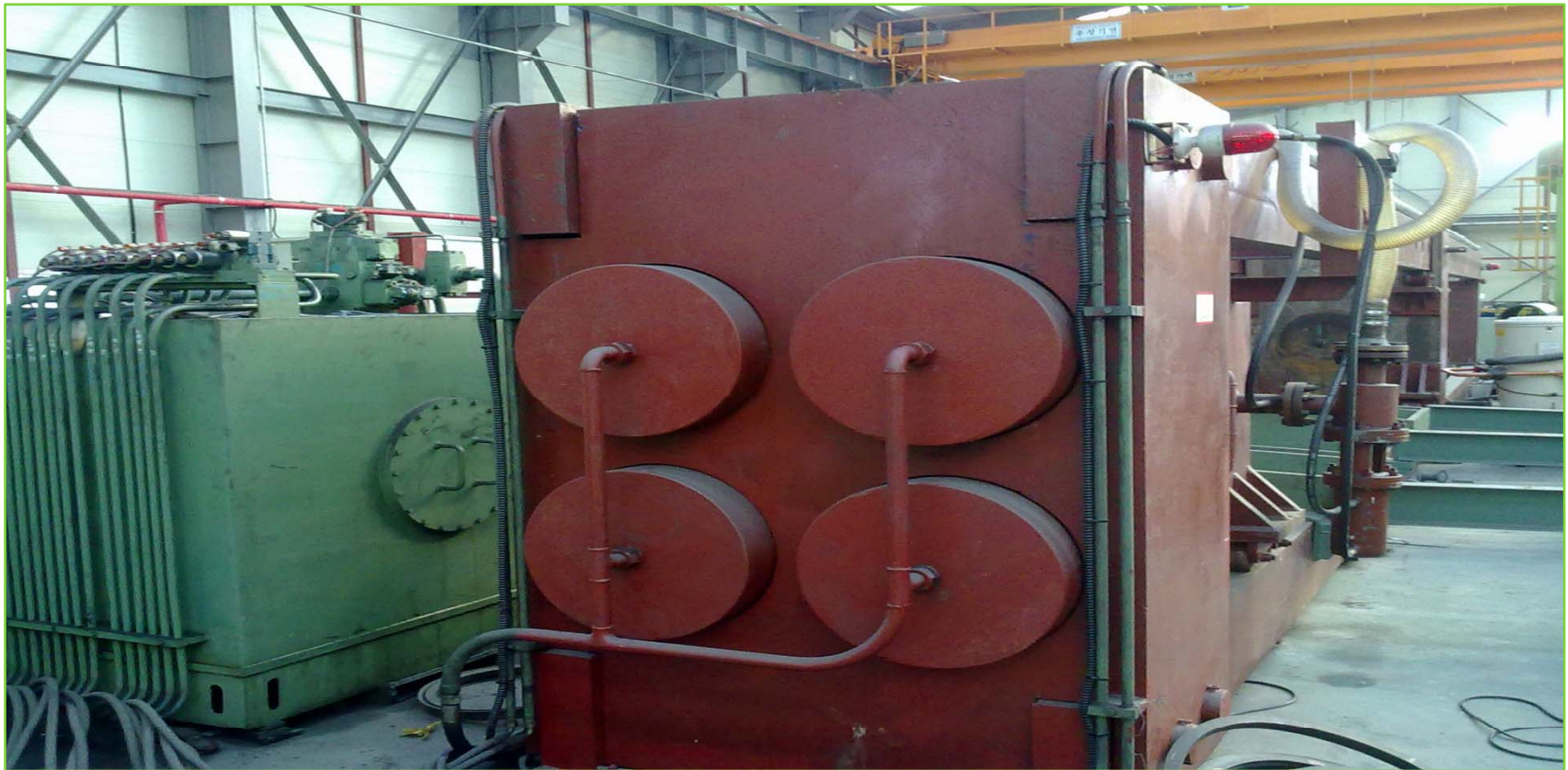
Outside Grinding



Automatic Ultrasonic Tester



Hydrostatic Tester



Cutting by Band Saw M/C



Beveling by End Facing CNC M/C



Final Inspection



Marking M/C



Delivery



2) Test Equipment in Laboratory

No	Equipment	Model	Maker/Country	Note
1	UTM (Universal Test)	KDMT-120	Kyeongdo KDP (Korea)	Including Hot Tensile Test Equipment (Tensile , Yield Strength, Elongation & Bend Test)
2	Charpy Impact Tester	BIT-63B	Hankuk PME (Korea)	ASTM E23/500J/AUTO
3	Brinell Hardness Tester	KDMT-181	Kyeongdo KDP (Korea)	500kg/3,000kg
4	Spectrometer	Q6 Columbus	Bruker Quantron (Germany)	Spark Type (For Chemical Analysis)
5	Microscope	ECLIPSE MA100	Nikon (Japan)	(x50, x100, x200, x500, x1000)
6	Electric Furnace		Keosung (Korea)	Simulation Heat Treatment
7	PMI (Positive Material Identification)	XLt898	Niton (USA)	X-ray Type
8	Vision Instrument	VME250	TAIWAN	150*200
9	Portable Hardness Tester	MIC10	GEIT (Germany)	Vickers (Ultrasonic Contact Type)
10	Portable UT Tester	USN60	Krautkramer (Germany)	

Universal Testing Machine



Charpy Impact Tester Satisfied ANSI



Brinell Hardness Tester



Spectrometer (Spark Type)



Microscope



Vision Instrument



P.M.I (Positive Material Identification)



Portable Hardness Tester (MIC 10)



Portable UT Tester



Electric Furnace for Simulation

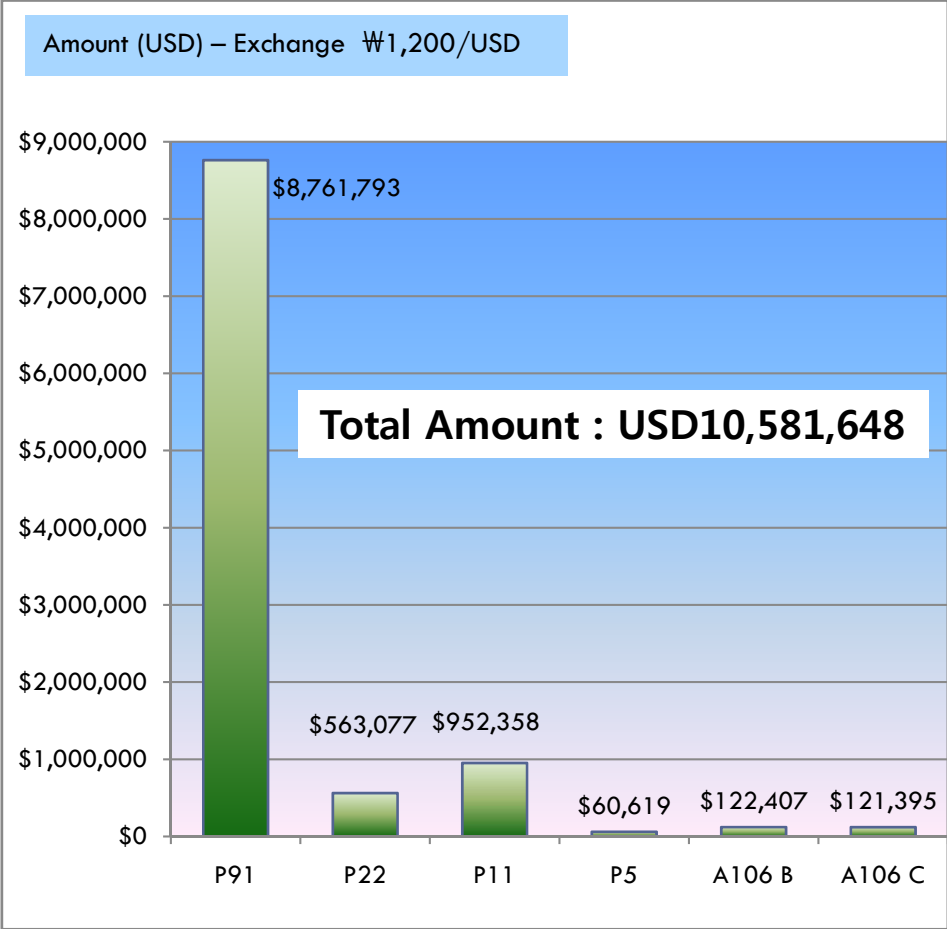
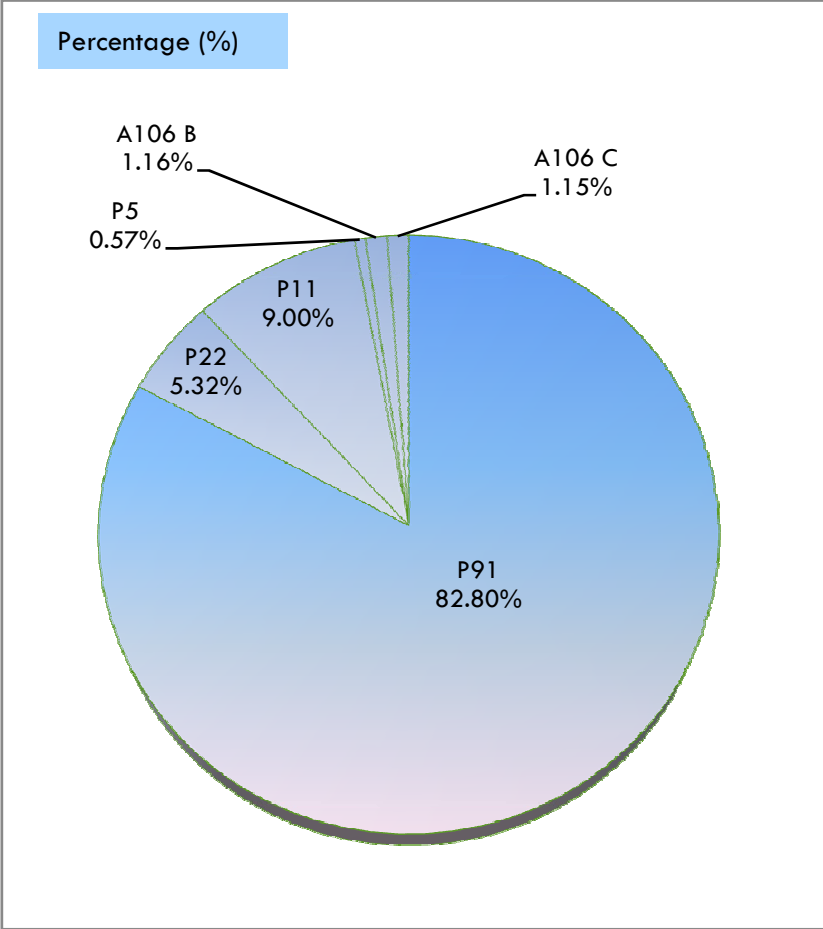


7. Application

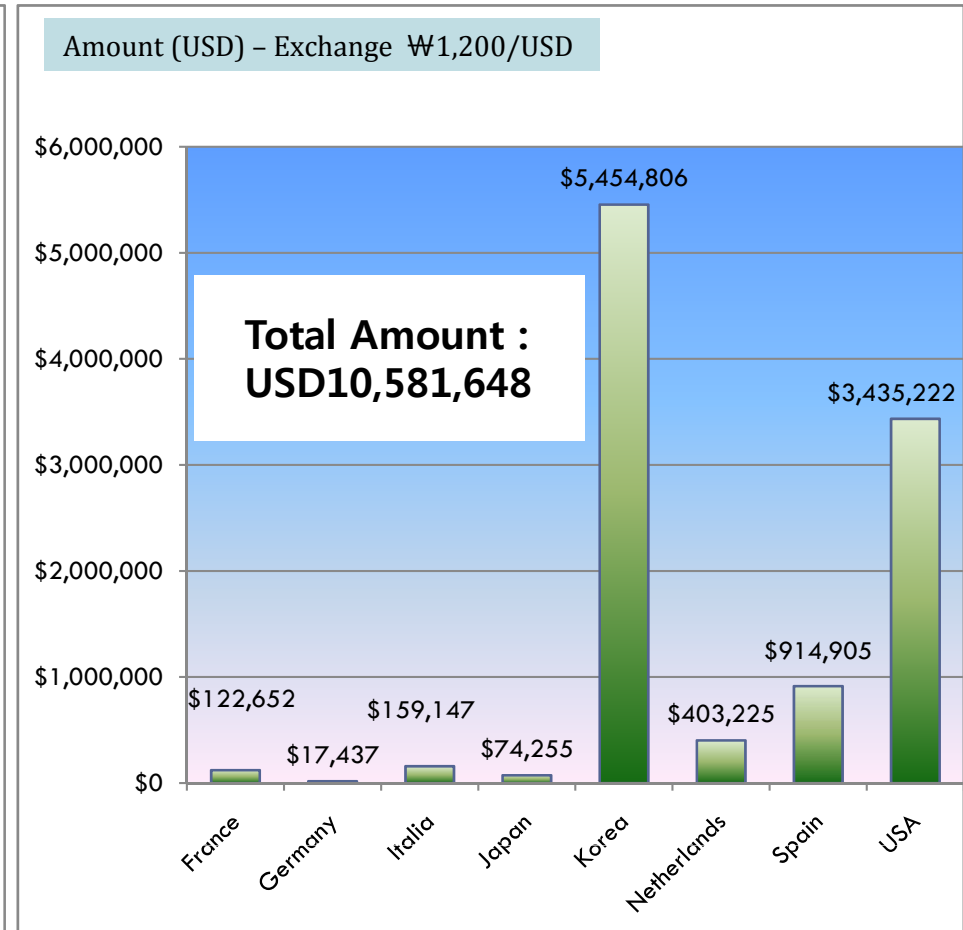
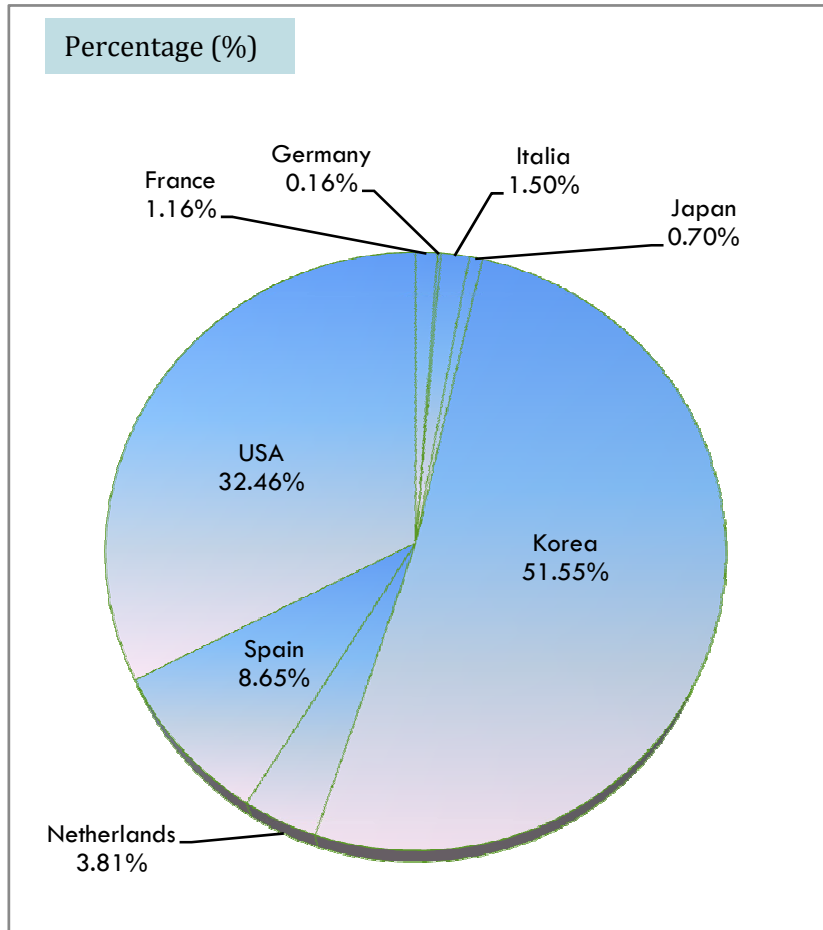
Process Plant	Power Plant Petrochemical Plant Refinery Plant Gas Treatment Plant
Pressure vessel construction	Pressure vessel Pre-fabrication

8. Reference

1) Awarded order for Material



2) Awarded order for Country



3) Details of reference

Client	Project ref.	Material Dimension			Weight (kg)	Year
Alstom	Berga CCPP	P91	NB24	SCH40	10,221kg	2009/01
Bumwoo	Daewoo Paju CCPP	P91	NB24	SCH40	11,466kg	2009/02
US Metals	Inventory	P91	NB20	SCH40	2,623kg	2009/04
Bumwoo	Daewoo Paju CCPP	P91	NB24	SCH80	5,068kg	2009/05
		P11	NB18	SCH40	11,452kg	2009/05
Sungil SIM	Boryung CCPP	P91	NB20	SCH60	3,472kg	2009/05
US Metals	Inventory	P91	NB24	SCH40	80,242kg	2009/06
Daewoo Eng.&Cons.	Daewoo Paju CCPP	P91	NB24	SCH40	107,993kg	2009/05~09
		P91	NB24	SCH40	15,392kg	2009/05~09
		P91	NB24	SCH40	1,858kg	2009/05~09
		P91	NB20	SCH40	3,798kg	2009/05~09
		P91	NB20	SCH40	2,379kg	2009/05~09
		P22	NB24	SCH40	2,805kg	2009/05~09

Client	Project ref.	Material Dimension			Weight (kg)	Year
Daewoo Eng.&Cons.	Daewoo Paju CCPP	P11	NB24	SCH40	638kg	2009/05~09
Daewoo misurada/bangagi	Daewoo Paju CCPP	P91	NB18	SCH120	5,436kg	2009/07
GS Eng.&Cons.	SMC Project	P11	NB18	SCH80	1,530kg	2009/07
		P11	NB20	SCH80	1,866kg	2009/07
LG Chemical	Yeosu NCC EthylenPJ	P22	NB18	62.1mm	3,630kg	2009/07
Doosan Heavy Ind.&Cons	HSINTA#2	A106Gr.B	NB24	SCH40	22,950kg	2009/08
US Metals	Inventory	P91	NB24	SCH40	81,244kg	2009/09
GS Caltex	HOU No.3	P5	NB20	SCH100	4,584kg	2009/09
CBI/Essent - US Metals	CCGT MD2 PJ, USA	P91	NB18	SCH40	1,203kg	2009/09
		P91	NB18	SCH40	1,255kg	2009/09
		P91	NB18	SCH40	785kg	2009/09
		P91	NB18	SCH40	837kg	2009/09
		P91	NB18	SCH40	889kg	2009/09
US Metals		P11	NB22	SCH60	23,326kg	2009/09

Client	Project ref.	Material Dimension			Weight (kg)	Year
Lointek	Iberdrola Algeri CCPP	P91	NB24	SCH30	43,435kg	2009/09~10
US Metals	Inventory	P22	NB24	SCH40	52,419kg	2009/10
Doosan Heavy Ind.&Cons	Yeongwol CCPP	P11	NB18	SCH60	6,180kg	2009/10
Samhwan	Posco Power 5&6	P11	NB24	SCH30	33,858kg	2009/10
Doosan Heavy Ind.&Cons	Shin Kori Nuclear	P11	NB20	SCH40	4,392kg	2009/10
		P11	NB24	SCH40	9,180kg	2009/10
Van Leeuwen	Inventory	P11	NB24	SCH40	1,505kg	2009/10
Doosan Heavy Ind.&Cons	Yeongwol CCPP	P22	NB18	SCH40	2,434kg	2009/10
GS Caltex	HOU No.3	P5	NB20	SCH100	6,876kg	2009/10
Sunghwa Ind.	Shin Wolsong Nuclear	A106Gr.C	NB25.125	25.40mm	103,680kg	2009/10~11
		A106Gr.C	NB26.625	44.45mm	20,790kg	2009/10~11
Doosan Heavy Ind.&Cons	Yeongwol CCPP	P91	NB22	15.88mm	47,712kg	2009/10~11
Doosan Heavy Ind.&Cons	GHECO	A106Gr.B	NB18	STD	5,040kg	2009/11
		A106Gr.B	NB22	STD	3,096kg	2009/11

Client	Project ref.	Material Dimension			Weight (kg)	Year
Doosan Heavy Ind.&Cons	GHECO	A106Gr.C	NB24	SCH60	8,520kg	2009/11
Lotte Eng.&Cons.	West Incheon CCPP	P22	NB26	STD	2,601kg	2009/11
		P22	NB20	SCH60	2,480kg	2009/11
Van Leeuwen	Inventory	P11	NB24	SCH40	2,550kg	2009/11
Gana Stainless	Hanhwa Power Plant	P91	NB24	STD	6,768kg	2009/11
		P22	NB18	SCH80	3,060kg	2009/11
Lointek	Iberdrola Algeri CCPP	P91	NB32	STD	7,277kg	2009/11
		P91	NB24	SCH30	20,519kg	2009/11
		P91	NB20	SCH30	1,969kg	2009/11
		P91	NB18	SCH30	1,720kg	2009/11
		P11	NB18	STD	2,531kg	2009/11
Samhwan	Posco Power 5&6	P91	NB18	SCH30	8,784kg	2009/10~12
		P91	NB22	SCHXS	16,416kg	2009/10~12
		P91	NB24	SCH30	67,716kg	2009/10~12

Client	Project ref.	Material Dimension			Weight (kg)	Year
Samhwan	Posco Power 5&6	P91	NB28	SCH30	1,632kg	2009/10~12
US Metals	Inventory	P91	NB24	SCH40	77,673kg	2009/12
NEM	Enecogen PJ, Netherlands	P91	NB24	SCH40	32,258kg	2009/12
Doosan Heavy Ind.&Cons	NHON Teach II, Vietnam	P22	NB22	SCH20	1,677kg	2009/12
		P91	NB24	SCH40	6,120kg	2009/12
		P91	NB24	SCH60	6,390kg	2009/12
Doosan Heavy Ind.&Cons	Yeongwol CCPP	P11	NB18	SCH60	21,012kg	2010/01
		P11	NB24	SCH60	16,330kg	2010/01
		P11	NB28	23.83mm	28,280kg	2010/01
		P22	NB28	23.83mm	5,252kg	2010/01
		P22	NB34	XS	3,431kg	2010/01
		P91	NB22	15.88mm	39,405kg	2010/01
		P91	NB24	SCH40	8,160kg	2010/01
		P91	NB32	25.40mm	4,684kg	2010/01

Client	Project ref.	Material Dimension			Weight (kg)	Year
Mitsubishi		P11	NB18	SCH40	4,087kg	2009/11
Hyundai Eng.&Cons.	Daejeon complex Energy	P11	NB28	STD	1,155kg	2009/12
GS CALTEX	HOU NO.3	P5	NB20	SCH100	382kg	2009/12
Doosan Heavy Ind.&Cons	Shin Kori Nuclear	P11	NB18	SCH40	4,680kg	2009/10~2010/01
Petro-chem	S-oil project	P11	NB18	XS	4,448kg	2010/01~02
		P11	NB20	SCH40	4,392kg	2010/01~02
		P11	NB24	SCH30	4,389kg	2010/01~02
		P11	NB24	SCH40	4,590kg	2010/01~02
		P22	NB18	SCH40	4,368kg	2010/01~02
		P22	NB20	SCH40	4,392kg	2010/01~02
		P22	NB22	XS	4,446kg	2010/01~02
		P22	NB24	SCH40	4,590kg	2010/01~02
Gyungnam Ind.	Ahsan Baebang Steam Generation	P91	NB24	SCH 30	2,508 kg	2010/01/30
		P91	NB20	SCH 30	2,508 kg	2010/01/30

Client	Project ref.	Material Dimension			Weight (kg)	Year
Samsung Corporation	USE SHUWEIHAT S2	A106Gr.B	NB20	STD	71,190kg	2010/01/15
			NB18	SCH 30	50,220kg	2010/01/15
			NB22	STD	6,192kg	2010/01/15
			NB18	STD	3,780kg	2010/01/15
			NB20	SCH 30	98,580kg	2010/01/15
			NB20	STD	42,822kg	2010/01/15
Sungwha Industry	Simense Enecogen	P11	NB20	SCH40	15,372kg	2010/02
Town West Sales Inc.,USA		P22	NB30	STD	3,186kg	2010/02
Hanchang High Metals		P22	NB24	SCH30	1,150kg	2010/02
Gana Stainless	Hanhwa Power Plant	P91	NB24	STD	2,593kg	2010/02
Town West Sales Inc.,USA		P11	NB30	STD	7,080kg	2010/03
Sumikin Bussan		P22	NB22	15.88mm	2,130kg	2010/03
		P22	NB20	SCH30	4,650kg	2010/03
		P22	NB28	SCH30	2,720kg	2010/03

Client	Project ref.	Material Dimension			Weight (kg)	Year
SEENTEC	Yeosu stream supply and Power generation	P91	NB20	XS	930 kg	2010/03/30
		P91	NB22	XS	940.5 kg	2010/03/30
Samsung Corporation	Al Shuweihat S2 PJ	A106 Gr.B	NB20	STD	21,060 kg	2010/03/10
Doosan Heavy Ind.&Cons	HSINTA#2	A106Gr.B	NB24	SCH40	22,950kg	2010/06
Doosan Heavy Ind.&Cons	Al Khalij PJ-BOILER	A106 Gr.B	NB20	STD	9,828 kg	2010/04~06
			NB20	STD	4,614 kg	2010/04~06
			NB22	STD	20,124 kg	2010/04~06
			NB22	STD	10,062 kg	2010/04~06
S&TC	2*388 Mw Vemagiri II	P22	NB24	SCH60	5,311 kg	2010/04
US Metals	Inventory	P91	NB24	SCH40	31,110 kg	2010/04
Seongwha Ind.	Shin Wolsong Nuclear	A106 Gr.C	25.125"	25.4mm	9,911 kg	2010/04
Sungil SIM	Shin Kori nuclear power plant	P22	NB22	15.88mm	4,583 kg	2010/05
Seongwha Ind.	Enecogen PJ Simense	P22	NB24	SCH40	12,996 kg	2010/05
Seongwha Ind.	Enecogen PJ Simense	P91	NB24	SCH40	6,138 kg	2010/05

Client	Project ref.	Material Dimension			Weight (kg)	Year
Hanchang High Metal	Inventory	A106 Gr.B	NB18	STD	1,524 kg	2010/04
Hanchang High Metal	Inventory	A106 Gr.B	NB20	STD	17,151 kg	2010/04
Dylan	Inventory	A106 Gr.B	NB22	STD	11,120 kg	2010/04
Stainalloy	Inventory	P91	NB30	STD	2,585 kg	2010/05
Stainalloy	Inventory	P91	NB24	SCH40	20,021 kg	2010/05
Larson & Toubro	2*388 Mw Vemagiri II	P91	NB24	SCH40	55,503 kg	2010/06
Vanleewen	AL Qatrana CCPP	P22	NB32	STD	4,627 kg	2010/06
Hanchang High Metal	Inventory	A106 Gr.B	NB20	SCH40	9,093 kg	2010/06
Larson & Toubro	2*388 Mw Vemagiri II	P11	NB20	SCH40	4,533 kg	2010/07
Larson & Toubro	2*388 Mw Vemagiri II	P22	NB24	SCH60	8,276 kg	2010/07
UR Mena Limited	Inventory	A106 Gr.B	NB18	STD	3,925 kg	2010/07
SKB Pacific		P11	NB18	XS	3,508 kg	2010/07
Yeosu Thermal Power Plant		P11	NB20	SCH80	1,867 kg	2010/07
Seongwha Ind.	Shin Wolsong Nuclear	A106 Gr.C	26.625"	44.45mm	1,385 kg	2010/07

Client	Project ref.	Material Dimension			Weight (kg)	Year
Larson & Toubro	2*388 Mw Vemagiri II	P91	NB24	SCH40	55,503 kg	2010/06
Vanleewen	AL Qatrana CCPP	P22	NB32	STD	4,627 kg	2010/06
Hanchang High Metal	Inventory	A106 Gr.B	NB20	SCH40	9,093 kg	2010/06
Larson & Toubro	2*388 Mw Vemagiri II	P11	NB20	SCH40	4,533 kg	2010/07
Larson & Toubro	2*388 Mw Vemagiri II	P22	NB24	SCH60	8,276 kg	2010/07
UR Mena Limited	Inventory	A106 Gr.B	NB18	STD	3,925 kg	2010/07
SKB Pacific		P11	NB18	XS	3,508 kg	2010/07
Yeosu Thermal Power Plant		P11	NB20	SCH80	1,867 kg	2010/07
Seongwha Ind.	Shin Wolsong Nuclear	A106 Gr.C	26.625"	44.45mm	1,385 kg	2010/07
Seongwha Ind.	Simense ABU Qir,Egypt	A106 Gr.B	NB26	STD	3,672 kg	2010/07
Seongwha Ind.	Simense ABU Qir,Egypt	A106 Gr.B	NB24	STD	5,922 kg	2010/07
Seongwha Ind.	Simense ABU Qir,Egypt	P22	NB18	STD	1,890 kg	2010/07
US Metals	Inventory	P91	NB20	XS	12,767 kg	2010/08
US Metals	Inventory	P22	NB26	XS	2,030 kg	2010/08

ClientA	Project ref.	Material Dimension			Weight (kg)	Year
Dylan	Inventory	P11	NB30	STD	8,850 kg	2010/Aug.~Sep.
Dylan	Inventory	P22	NB22	STD	18,318 kg	2010/Aug.~Sep.
Dylan	Inventory	A106 Gr.B	NB30	STD	1,062 kg	2010/Aug.~Sep.
US Metals	Inventory	P91	NB24	SCH40	46,665 kg	2010/09
Doosan Heavy Ind.	HSINTA #2	A106 Gr.B	NB24	SCH40	22,950 kg	2010/09
NEM	Simense Bachaquero, Venezuela	P91	NB22	SCH30	10,773 kg	2010/09
Sungil SIM	Seneko, Vietnam	P22	NB22	STD	1,548 kg	2010/09
NEM	Simense TammarePJ,Venezuela	P91	NB22	SCH30	10,773 kg	2010/09
NEM	Simense HEMWEG CCPP	P91	NB24	SCH40	16,065 kg	2010/11
Grand Total					1,702,028 kg	

9. Quality Certification

1. ISO 9001 Certificate



2. PED Certificate



3. KEPIC Certificaion

