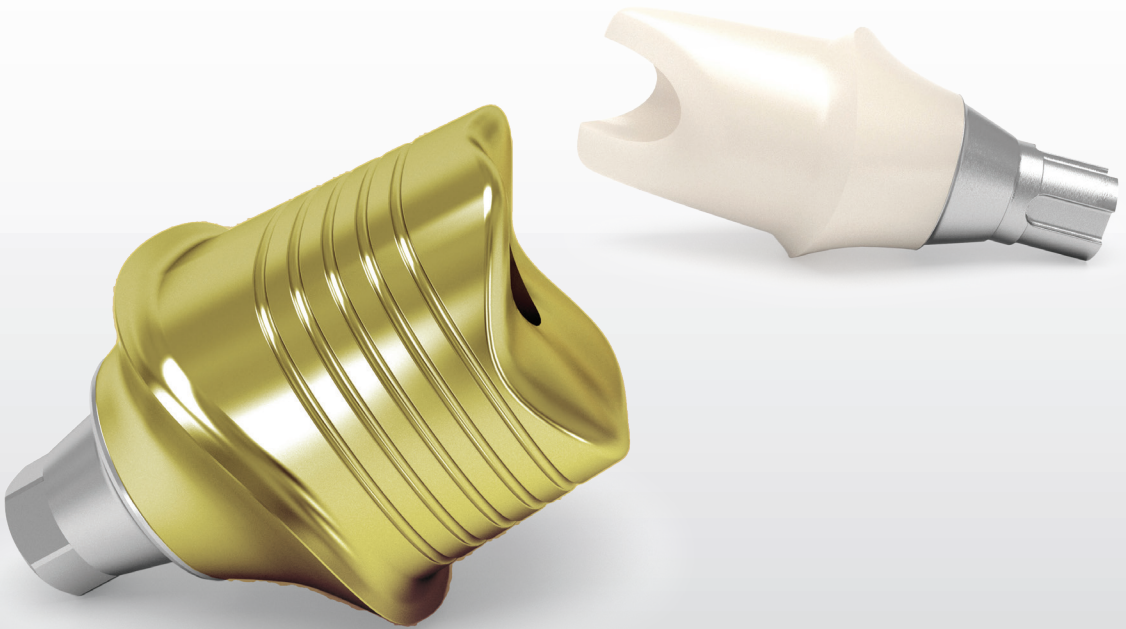


# **ARGEN<sup>®</sup> IS**

## **COMPATIBILITY CHART**

COMPLETE CUSTOM ABUTMENT SYSTEM



# Software Compatibility

Implant System:	Series:	3Shape (New Library)	Exocad (New Library)	Dental Wings
ASTRA TECH EV™*	SEV Series	✓	✓	
ASTRA TECH OsseoSpeed TX™*	S Series / AO Series	✓	✓	✓
BioHorizons®*	BIO Series	✓	✓	
Biomet 3i Certain®*	H Series/ BC Series	✓	✓	✓
Biomet 3i OSSEOTITE®*	I Series/ BO Series	✓	✓	✓
CAMLOG®*	CAM Series	✓	✓	
Dentsply Friadent XiVE®*	T Series / DX Series	✓	✓	✓
Hiossen ET / HG®*	HIO Series	✓	✓	
Neoss®*	NEO Series	✓	✓	
NobelActive™*	F Series / NC Series	✓	✓	✓
NobelReplace Select®*	E Series / NR Series	✓	✓	✓
Nobel Brånemark®*	K Series / NB Series	✓	✓	✓
Straumann Bone Level®*	L Series / SB Series	✓	✓	✓
Straumann SynOcta®*	N Series / SS Series	✓	✓	✓
Zimmer Tapered Screw-Vent®*	R Series / ZS Series	✓	✓	✓

\* Not trademarks of The Argen Corporation.

# Titanium

## Custom Abutment Compatibility

Implant System:	Series:	Available Sizes:				
ASTRA TECH EV™*	SEV Series	• 3.0	• 3.6	• 4.2	• 4.8	• 5.4
ASTRA TECH OsseoSpeed TX™*	S Series / AO Series	• 3.5/4.0	• 4.5/5.0			
BioHorizons®*	BIO Series	• 3.0	• 3.5	• 4.5	• 5.7	
Biomet 3i Certain®*	H Series/ BC Series	• 3.4 NP	• 4.1 RP	• 5.0 WP		
Biomet 3i OSSEOTITE®*	I Series/ BO Series	<b>N/A</b>	• 4.1	<b>N/A</b>		
CAMLOG®*	CAM Series	• 3.3	• 3.8	• 4.3	• 5.0	
Dentsply Friadent XiVE®*	T Series / DX Series	• 3.4	• 3.8	• 4.5	• 5.5	
Hiossen ET / HG®*	HIO Series	• 3.5	• 4.0/4.5/5.0/6.0			
Neoss®*	NEO Series	• 3.5/4.0/4.5/5.0/5.5				
NobelActive™*	F Series / NC Series	• 3.5 NP	• 4.3/5.0 RP			
NobelReplace Select®*	E Series / NR Series	• 3.5 NP	• 4.3 RP	• 5.0 WP	<b>N/A</b>	
Nobel Brånemark®*	K Series / NB Series	• 3.5	• 4.1	• 5.1		
Straumann Bone Level®*	L Series / SB Series	• 3.3 NC	• 4.1/4.8 RC			
Straumann SynOcta®*	N Series / SS Series†	• 3.5 NN	• 4.8 RN	• 6.5 WN		
Zimmer Tapered Screw-Vent®*	R Series / ZS Series	• 3.5	• 4.5	• 5.7		

\* Not trademarks of The Argen Corporation.

† SS Series not available in 3.5 NN.

# Zirconia and Hybrid

## Custom Abutment Compatibility

Implant System:	Series:	Available Sizes:				
ASTRA TECH EV™*	SEV Series	• 3.0	• 3.6	• 4.2	• 4.8	• 5.4
ASTRA TECH OsseoSpeed TX™*	S Series / AO Series	• 3.5/4.0	• 4.5/5.0			
BioHorizons®*	BIO Series	• 3.0	• 3.5	• 4.5	• 5.7	
Biomet 3i Certain®*	H Series/ BC Series	• 3.4 NP	• 4.1 RP	• 5.0 WP		
Biomet 3i OSSEOTITE®*	I Series/ BO Series	• 3.4	• 4.1	• 5.0		
CAMLOG®*	CAM Series	• 3.3	• 3.8	• 4.3	• 5.0	
Dentsply Friadent XiVE®*	T Series / DX Series	• 3.4	• 3.8	• 4.5	• 5.5	
Hiossen ET / HG®*	HIO Series	• 3.5	• 4.0/4.5/5.0/6.0			
Neoss®*	NEO Series	• 3.5/4.0/4.5/5.0/5.5				
NobelActive™*	F Series / NC Series	• 3.5 NP	• 4.3/5.0 RP			
NobelReplace Select®*	E Series / NR Series	• 3.5 NP	• 4.3 RP	• 5.0 WP	• 6.0	
Nobel Brånemark®*	K Series / NB Series	• 3.5	• 4.1	• 5.1		
Straumann Bone Level®*	L Series / SB Series	• 3.3 NC	• 4.1/4.8 RC			
Straumann SynOcta®*	N Series / SS Series	• 3.5 NN	• 4.8 RN	• 6.5 WN		
Zimmer Tapered Screw-Vent®*	R Series / ZS Series	• 3.5	• 4.5	• 5.7		

\* Not trademarks of The Argen Corporation.

# 2-CONnect® / Screw-Retained Multi-Unit

## Custom Abutment Compatibility

Implant System:	Series:	Available Sizes:				
ASTRA TECH EV™*	SEV Series	N/A	N/A	N/A	N/A	N/A
ASTRA TECH OsseoSpeed TX™*	S Series / AO Series	• 3.5/4.0	• 4.5/5.0			
BioHorizons®*	BIO Series	N/A	N/A	N/A	N/A	
Biomet 3i Certain®*	H Series/ BC Series	• 3.4 NP	• 4.1 RP	• 5.0 WP		
Biomet 3i OSSEOTITE®*	I Series/ BO Series	• 3.4	• 4.1	• 5.0		
CAMLOG®*	CAM Series	N/A	N/A	N/A	N/A	
Dentsply Friadent XiVE®*	T Series / DX Series	• 3.4	• 3.8	• 4.5	• 5.5	
Hiossen ET / HG®*	HIO Series	N/A	N/A			
Neoss®*	NEO Series	N/A				
NobelActive™*	F Series / NC Series	• 3.5 NP	• 4.3/5.0 RP			
NobelReplace Select®*	E Series / NR Series	• 3.5 NP	• 4.3 RP	• 5.0 WP	• 6.0	
Nobel Brånemark®*	K Series / NB Series	• 3.5	• 4.1	• 5.1		
Straumann Bone Level®*	L Series / SB Series	• 3.3 NC	• 4.1/4.8 RC			
Straumann SynOcta®*	N Series / SS Series	• 3.5 NN	• 4.8 RN	• 6.5 WN		
Zimmer Tapered Screw-Vent®*	R Series / ZS Series	• 3.5	• 4.5	• 5.7		

\* Not trademarks of The Argen Corporation.

# Argen Custom Abutment Warranty

THE ARGEN CORPORATION (“Argen”) provides a Limited Warranty (“Warranty”) for all Argen titanium custom abutments, zirconia hybrid custom abutments, and SLM hybrid custom abutments. In addition, if an implant supplier does not honor their Warranty due to the use of an Argen abutment, Argen will replace both the abutment and the implant.

**Visit [argen.com](https://www.argen.com) for complete terms of the warranty.**



**ArgenIS Implant Solutions  
brought to you by Argen Digital**

**(800) 255-5524 | [argen.com](https://www.argen.com)**