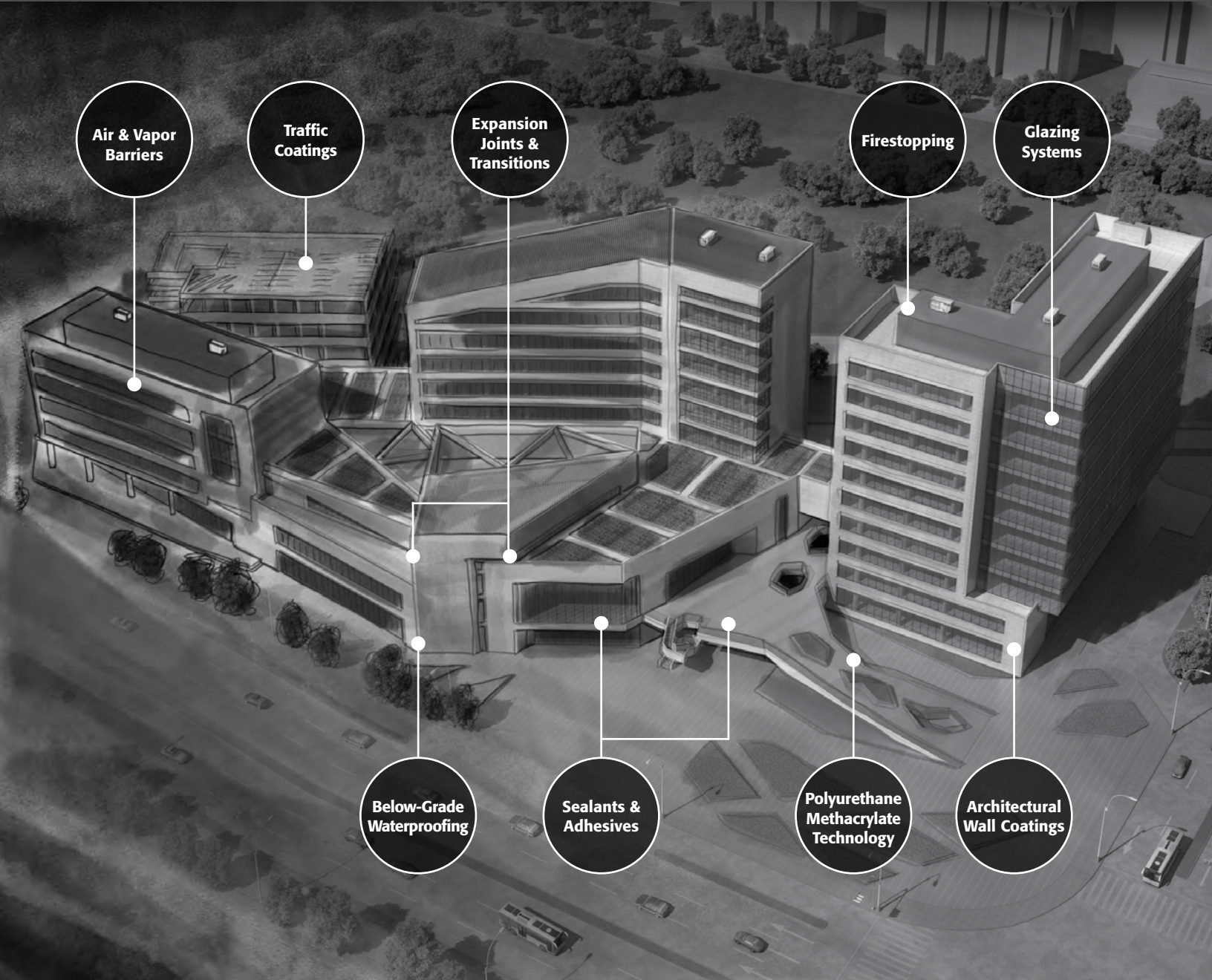


Complete Building Envelope Protection

Tremco Commercial Sealants & Waterproofing Line Card



Complete Building Envelope Protection

Total protection from water intrusion. From the elements. From caustic chemicals, deicers, thermal movement, seismic movement, fire and more. Tremco has developed the most comprehensive suite of building envelope protection products available in the industry.

This singular focus ensures seamless compatibility of products and systems. More comprehensive warranties. Single-source accountability. And, knowledgeable representatives in major markets across the country to help assess unique job requirements, ensure proper product selection, conduct jobsite tests and provide on-site assistance.

But we didn't stop there. We're continually pioneering advances in sealant and waterproofing technology to enable products to set new performance standards, dramatically reduce production schedules and provide ever-increasing flexibility in project design and implementation.

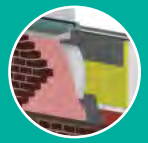
We've built a reputation for developing better ways to get the job done. See for yourself at tremcosealants.com.

CONTENTS

Air Barriers.....	3
Below-Grade Waterproofing.....	4
Traffic Coatings.....	5
Expansion Joints.....	6
Sealants.....	7
Firestopping.....	8
Polyurethane Methacrylate (PUMA) Technology.....	8
Glazing.....	9
Transitions.....	10
Architectural Wall Coatings.....	10

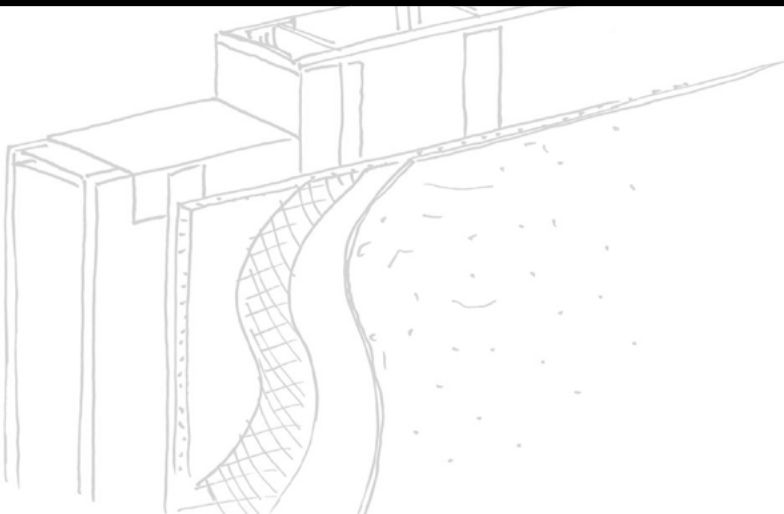
Air Barriers

Tremco offers vapor-permeable and vapor-retarding air barrier systems formulated for compatibility with engineered transitions and high performance sealants to provide continuity at critical terminations and connections.



Air Barriers	Description	Basic Uses	Applicable Standards			
Field-Applied Air Barriers						
ExoAir® 110	Self-adhered air and vapor barrier membrane consisting of 36 mils of SBS rubber asphalt laminated to a 4-mil cross-laminated high-density polyethylene film with a siliconized release liner.	<ul style="list-style-type: none"> Controls flow of air water vapor and liquid water Used as a stand-alone membrane or as a system component with ExoAir fluid-applied air barrier systems Used in conjunction with other accessories to provide a comprehensive air barrier system 	AAMA 711 AATCC-127 ASTM C1305 ASTM D870 ASTM D903	AAMA 713 ASTM C794 ASTM D412 ASTM D882	ASTM D1876 ASTM D4073 ASTM E96 ASTM E283 ASTM E2178	ASTM D1970 ASTM D4541 ASTM E154 ASTM E331 ASTM E2357
ExoAir® 110AT 285 Tested	NFPA Self-adhered air and vapor barrier membrane consisting of a 22-mil composite impermeable membrane that is comprised of 16 mils of butyl and 6 mils of HDDP facer.	<ul style="list-style-type: none"> Controls flow of air water vapor and liquid water Used as a stand-alone membrane, detailing accessory, thru-wall flashing, or as a system component with ExoAir fluid-applied air barrier systems 	AATCC-127 ASTM D412 ASTM D882 ASTM D1876	ASTM C1305 ASTM D870 ASTM D903 ASTM D1970	ASTM D4073 ASTM E96 ASTM E283 ASTM E331 ASTM E2357	ASTM D4541 ASTM E154 ASTM E2178 NFPA 285
ExoAir® 120 SP or R grades available	Single-component, elastomeric, asphalt emulsion, fluid-applied air and vapor-barrier membrane that may be rolled or sprayed on above-grade wall assemblies.	<ul style="list-style-type: none"> Controls flow of air water vapor and liquid water Used in conjunction with other accessories to provide a comprehensive air barrier system 	AAMA 713 ASTM C794 ASTM D412	AATCC-127 ASTM C1305 ASTM D1970	ASTM D4541 ASTM E2178	ASTM E96 ASTM E331 ASTM E2357
ExoAir® 130 NFPA 285 Tested	Fluid applied, synthetic, UV-resistant, air and vapor barrier membrane that may be rolled or sprayed on above-grade wall assemblies.	<ul style="list-style-type: none"> Controls flow of air, water vapor and liquid water Used behind metal panels Specified for projects requiring extended UV resistance, high temperatures, and E84 & NFPA 285 testing Used in conjunction with other accessories to provide a comprehensive air barrier system 	AAMA 713 ASTM C794 ASTM D412 ASTM D1970	AATCC-127 ASTM C1305 ASTM D870	ASTM D4541 ASTM E283 ASTM E2178 NFPA 285	ASTM E96 ASTM E331 ASTM E2357
ExoAir® 220 NFPA 285 Tested	Single-component, elastomeric, asphalt emulsion, fluid-applied, vapor-permeable air barrier membrane that may be rolled or sprayed on above-grade wall assemblies.	<ul style="list-style-type: none"> Controls flow of air and liquid water Allows water vapor to pass through Specified for projects requiring NFPA 285 testing Used in conjunction with other accessories to provide a comprehensive air barrier system 	AAMA 713 ASTM C794 ASTM D412 ASTM D4541	AATCC-127 ASTM C1305 ASTM D1970	ASTM D1876 ASTM E283 ASTM E2178 NFPA 285	ASTM E96 ASTM E331 ASTM E2357
ExoAir® 230 NFPA 285 Tested	Fluid-applied, synthetic, UV-resistant, vapor-permeable air barrier membrane that may be rolled or sprayed on above-grade wall assemblies.	<ul style="list-style-type: none"> Controls flow of air and liquid water Allows water vapor to pass through Used behind metal panels Specified for projects requiring extended UV resistance, high temperatures, and E84 & NFPA 285 testing Used in conjunction with other accessories to provide a comprehensive air barrier system 	AAMA 711 AATCC-127 ASTM C1305 ASTM D870 ASTM D903	AAMA 713 ASTM C794 ASTM D412 ASTM D882	ASTM D1876 ASTM D4073 ASTM E96 ASTM E331 ASTM E2357	ASTM D1970 ASTM D4541 ASTM E154 ASTM E2178 NFPA 285
ExoAir® TWF NFPA 285 Tested	Self-adhered air and vapor barrier membrane consisting of 32 mils (.80 mm) of self-adhering SBS rubberized asphalt laminated to an 8-mil (.20 mm) cross-laminated, high-density polyethylene film with a siliconized release liner.	<ul style="list-style-type: none"> Areas that require masonry flashing material Brick ledges 	AAMA 713 ASTM D1970	ASTM D412 ASTM E154	ASTM E283 ASTM 2178 NFPA 285	ASTM E331 ASTM E2357
ExoAir® Termination Mastic	Single-component mastic formulated from polymers, plasticizers and select additives.	<ul style="list-style-type: none"> Sealing T-joints Overlaps in detail areas Repair mastic for ExoAir 110, TWF, ExoAir 120 SP/R and ExoAir 220 				
Dymonic® 100 Fluid Applied Flashing and Detailing Sealant NFPA 285 Tested	High-performance, medium-modulus, low-VOC, UV-stable, non-sag polyurethane sealant. Highly versatile sealant that has competitive movement capability and the ability to adhere to damp and green concrete.	<ul style="list-style-type: none"> Used to detail the rough opening for fluid applied flashing applications Used to detail board and fastener heads prior to the installation of ExoAir membranes Used to detail around penetrations Used to repair damaged ExoAir membranes 	AAMA 713 ASTM C920 ASTM D412	AAMA 714 ASTM C1305 ASTM D870	ASTM E84 ASTM E154 ASTM E2178 NFPA 285	ASTM E96 ASTM E283 ASTM E2357
Spectrem® 1 NFPA 285 Tested	High-performance, ultra low-modulus, one-component, non-sag, moisture-cure silicone joint sealant.	<ul style="list-style-type: none"> Used for detailing post installation of ExoAir 110 and ExoAir 110AT Bonds well to the HDPE facer of self-adhered membranes Seals the Proglaze ETA silicone extrusion 	AAMA 713 ASTM C1305	ASTM C920 ASTM D412	ASTM E84 ASTM E283 NFPA 285	ASTM E96 ASTM E2357
Pre-Applied Air Barrier						
Securock® ExoAir® 430	Pre-applied fluid-applied, synthetic, UV-resistant, vapor-permeable air/water barrier membrane, applied in a factory setting applied to USG's Brand Ultralight Glass-Mat Sheathing panels.	<ul style="list-style-type: none"> Controls flow of air and liquid water Allows water vapor to pass through Specified for projects requiring extended UV resistance, high temperatures, and E84 & NFPA 285 testing Used in conjunction with other accessories to provide a comprehensive air barrier system 	<i>(Panel Physical Properties)</i> ASTM C297 ASTM C473 ASTM D1970, Section 7.9 ASTM D4541 ASTM E96 ASTM E331 ASTM E831 ASTM C518 ASTM D3273 ASTM D3330 ASTM E2178 ASTM E2357 AATCC 127-08 <i>(Joint Treatment Physical Properties)</i> ASTM C719 ASTM C1305 ASTM D412			

SP = Spray R = Roller



Below-Grade Waterproofing

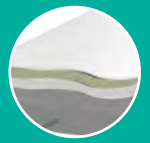
A comprehensive below-grade line of products to provide high-performance waterproofing protection and solutions for even the most challenging applications.



Below-Grade Waterproofing	Description	Basic Uses	Applicable Standards		
TREMproof® Amphibia	Co-extruded, watertight membrane with three active layers – a watertight EPDM barrier, an active core with the ability to seal when penetrated or cut, and an active barrier which seals overlaps — and a non-woven fabric layer promoting the mechanical adhesion of the membrane to concrete.	<ul style="list-style-type: none"> Blindside walls Beneath slabs Tunnels 	<ul style="list-style-type: none"> Elevator pits Submerged conditions 	<ul style="list-style-type: none"> ASTM D412 ASTM D903 ASTM D1970 ASTM D624 ASTM E96 ASTM C836 	<ul style="list-style-type: none"> ASTM E154 ASTM D4833 ASTM D4068 ASTM D5385 ASTM D570
TREMproof® 500 Series (TREMproof® 545/560)	Primerless, HDPE membrane featuring a high-performance butyl adhesive for damp and green concrete applications.	<ul style="list-style-type: none"> Backfilled walls 		<ul style="list-style-type: none"> ASTM D412 ASTM D1970 ASTM E154 ASTM D1353 ASTM D7004 ASTM D882 	<ul style="list-style-type: none"> ASTM C836 ASTM E96 ASTM D1876 ASTM D570 ASTM D903 ASTM D751
TREMproof® 250GC	Cold, fluid-applied, aliphatic, rapid curing, single-component polyurethane waterproofing membrane for green and damp concrete. Several grades to meet your specifications.	<ul style="list-style-type: none"> Tunnels – cut & cover Back-filled walls Vegetated roofs 	<ul style="list-style-type: none"> Split-slab Planters Submerged conditions 	<ul style="list-style-type: none"> ASTM D412 ASTM C836 	<ul style="list-style-type: none"> ASTM E96
TREMproof® 260	Cold-fluid, spray-applied, polymer-enhanced, single-component, asphalt-emulsion membrane that can be applied to green and damp concrete. Also available in roller grade.	<ul style="list-style-type: none"> Tunnels – cut & cover Methane barrier 	<ul style="list-style-type: none"> Backfilled walls 	<ul style="list-style-type: none"> ASTM C836 ASTM E96 	<ul style="list-style-type: none"> ASTM D412 ASTM D903
TREMproof® 201/60	Cold, fluid-applied, bitumen-modified, single-component, moisture-curing polyurethane waterproofing membrane. Several grades to meet your specifications.	<ul style="list-style-type: none"> Tunnels – cut & cover Split-slab 	<ul style="list-style-type: none"> Backfilled walls Planters 	<ul style="list-style-type: none"> ASTM C836 	
TREMproof® 6100	Hot-applied, single-component, rubberized asphalt waterproofing membrane consisting of 100% solids.	<ul style="list-style-type: none"> Tunnels – cut & cover Split-slab Roof decks Submerged conditions 	<ul style="list-style-type: none"> Planters Vegetated Roofs Plaza decks 	<ul style="list-style-type: none"> ASTM E96 ASTM D92 ASTM D5329 CGSB 37.50-MB89 	
TREMproof® PUMA	Cold-applied, waterproofing system that utilizes polyurethane-methacrylate (PUMA) technology for quick turnaround and cold weather applications.	<ul style="list-style-type: none"> Split-slab Vegetated Roofs Flashing 	<ul style="list-style-type: none"> Planters Asphalt overlay Under paver systems 	<ul style="list-style-type: none"> ASTM D1353 ASTM D5147 ASTM D4073 ASTM C501 ASTM D570 ASTM C794 ASTM D2843 ASTM C1305 	<ul style="list-style-type: none"> ASTM D638 ASTM D1640 ASTM D2240 ASTM D5602 ASTM E96 ASTM D1929 ASTM D635
TREMproof® Dual Waterproofing System (DWS)	Dual-membrane waterproofing system comprised of TREMproof TRA sheeting embedded into TREMproof 250CG. This unique waterproofing system is designed to have tenacious adhesion, long-term durability and remarkable chemical stability.	<ul style="list-style-type: none"> Backfilled walls Split slab application Planters Terraces 	<ul style="list-style-type: none"> Under paver systems Vegetated roofs Plaza decks 	<ul style="list-style-type: none"> ASTM C836 ASTM E96 	
TREMproof® Triple Waterproofing System (TWS)	Triple-layer waterproofing assembly consisting of 20 mils of HDPE, expandable granular bentonite and a protective layer of spun-bonded polyester, coated with 60 dry mils of polymer-enhanced, liquid-applied asphalt membrane.	<ul style="list-style-type: none"> Beneath slab 	<ul style="list-style-type: none"> Blindside walls 	<ul style="list-style-type: none"> ASTM D412 ASTM E96 ASTM E154 	<ul style="list-style-type: none"> ASTM D5385 ASTM D4833 ASTM D903
Paraseal®	A sheet system combining the strength and puncture resistance of HDPE with expanding capabilities of bentonite clay. Also available in saltwater version.	<ul style="list-style-type: none"> Back-filled walls 	<ul style="list-style-type: none"> Water vapor protection 	<ul style="list-style-type: none"> ASTM D412 ASTM D5385 ASTM E96 	<ul style="list-style-type: none"> ASTM E154 ASTM D4833 ASTM D6693
Paraseal® LG	Paraseal waterproofing membrane with a layer of spun bond polyester to resist damage from abrasive concrete pours or direct installation of shotcrete.	<ul style="list-style-type: none"> Blindside walls Elevator pits Beneath slab 	<ul style="list-style-type: none"> Water vapor protection Tunnels 	<ul style="list-style-type: none"> ASTM D412 ASTM D5385 ASTM D4068 	<ul style="list-style-type: none"> ASTM D4833 ASTM E96 ASTM D6693
Paraseal® GM	Multi-layer sheet membrane installed with Para JT Tape to form a superior barrier against water and methane gas. Also available in saltwater version.	<ul style="list-style-type: none"> Masonry Tunnels Back-filled walls Under slab 	<ul style="list-style-type: none"> Water vapor protection Methane barrier Split slab 	<ul style="list-style-type: none"> ASTM D412 ASTM D5385 ASTM D6693 ASTM D4833 	<ul style="list-style-type: none"> ASTM E154 ASTM E96 ASTM D4068
Paraseal® GM/LG 20 mil 60 mil	Multi-layer sheet membrane with a layer of spun bond polyester to resist damage from abrasive concrete pours or direct installation of shotcrete. Paraseal GM/LG – 20 mil with Para JT Tape or heat-welded Paraseal GM/LG – 60 mil form superior barriers against water and methane gas.	<ul style="list-style-type: none"> Blindside walls Water vapor protection 	<ul style="list-style-type: none"> Methane barrier Beneath slab 	<ul style="list-style-type: none"> ASTM D412 ASTM D5385 ASTM D4068 ASTM E154 	<ul style="list-style-type: none"> ASTM D4833 ASTM E96 ASTM 6693
TREMdrain Series	A series of prefabricated drainage mats and protection boards for vertical and horizontal applications, and a Total-Drain System to replace traditional pipe/aggregate systems.	<ul style="list-style-type: none"> Used in conjunction with TREMproof and Paraseal waterproofing membranes. 		Refer to product data sheets.	
Superstop	Composite waterstop with expandable bentonite for sealing cold joints in concrete.	<ul style="list-style-type: none"> Cold joints 		<ul style="list-style-type: none"> ASTM D30 ASTM D71 	<ul style="list-style-type: none"> ASTM D751 Method A
Permaquik® Crystalline Waterproofing	Capillary waterproofing formulation of proprietary blends of chemicals, quartz sand and cement, used to fill small voids and cracks in cement caused by shrinkage, eliminating the migration of water.	<ul style="list-style-type: none"> Negative side waterproofing Water towers, clear wells, water stations, water pollution control plants 		<ul style="list-style-type: none"> ASTM C39 ASTM D5084 ASTM E96 	
Flashing					
TREMproof® PUMA Flashing System	Quick-cure, liquid-applied system based on polyurethane-methacrylate (PUMA) technology, with tenacious adhesion to concrete and metal.	<ul style="list-style-type: none"> Flashing joints Flashing transitions in plane Flashing horizontal-to-vertical transitions Penetrations 		<ul style="list-style-type: none"> ASTM D1353 ASTM D5147 ASTM D4073 ASTM C501 ASTM D570 ASTM C794 ASTM D2843 ASTM C1305 	<ul style="list-style-type: none"> ASTM D638 ASTM D1640 ASTM D2240 ASTM D5602 ASTM E96 ASTM D1929 ASTM D635 CSA S413
Tremco® DualFlex	A reinforcing flashing consisting of a central strip of stretchy SEBS rubber flanked on either side by an absorbent non-woven felt for easy integration the waterproofing membrane and superior movement capability without compromising the waterproofing.	<ul style="list-style-type: none"> Flashing joints Flashing transitions in plane Flashing horizontal-to-vertical transitions Flashing waterproofing where a durable, reinforcing sheeting is required 			

Traffic Coatings

A series of coating systems for vehicular and pedestrian deck applications as well as coatings for specialty applications, including low-VOC, low-odor formulations ideal for occupied areas.

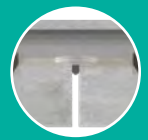


Traffic Coating Systems	Description	Basic Uses	Applicable Standards
Base Coats			
Vulkem® 350NF <i>R & SL grade available</i>	A single-component, low-odor, low-VOC polyurethane coating that possesses tenacious adhesion primarily to clean and dry concrete, but also to wood and metal. It can be applied underneath any Vulkem topcoat or used under tile.	<ul style="list-style-type: none"> • Pedestrian decks • Vehicular decks 	<ul style="list-style-type: none"> • Under tile • ASTM C957 • ASTM D2240 • ASTM D4541 • ASTM D153 • ASTM D412 • CSA S413-14
Vulkem® 350	A single-component urethane membrane that bonds firmly to clean, dry concrete and metal. It can be applied under any Vulkem top coat or used under tile.	<ul style="list-style-type: none"> • Pedestrian decks • Vehicular decks 	<ul style="list-style-type: none"> • Under tile • ASTM D1353 • ASTM D412 • CSA S413-14 • ASTM D2240 • ASTM D4541
Vulkem® 360NF	A low-odor, VOC-compliant, water-cured, rapid-setting polyurethane basecoat that possesses tenacious adhesion primarily to clean and dry concrete, but also to wood and metal. Can be applied at various thicknesses.	<ul style="list-style-type: none"> • Sloping/patching/repair of concrete • Pedestrian decks • Vehicular decks 	<ul style="list-style-type: none"> • ASTM D412 • ASTM D642 • ASTM C836 • CSA S413-14 • ASTM D2240 • ASTM C794 • ASTM D4541
Intermediate Coats			
Vulkem® 346	Aliphatic, polyurethane, elastomeric coating that is applied after the base coat has cured.	<ul style="list-style-type: none"> • Vehicular decks 	<ul style="list-style-type: none"> • ASTM C957 • ASTM D2240 • ASTM D412 • ASTM D1353 • ASTM D4060 • CSA S413-14
Vulkem® 950NF	High-performance, two-part, low-odor/low-VOC intermediate coat for vehicular (heavy-duty) applications.	<ul style="list-style-type: none"> • Applications where low odor & extreme durability are concerns • Vehicular decks 	<ul style="list-style-type: none"> • Pedestrian decks • Mechanical room • ASTM C957 • ASTM D4060 • CSA S413-14 • ASTM D1353 • ASTM D412
Vulkem® Epoxy WC	Two-part, high solids, low odor, VOC compliant, epoxy wear coat.	<ul style="list-style-type: none"> • Applications where low odor & extreme durability are concerns • Vehicular decks 	<ul style="list-style-type: none"> • ASTM C957 • CSA S413-14
Top Coats			
Vulkem® 950NF	High-performance, two-part, low-odor/low-VOC topcoat for applications without UV exposure.	<ul style="list-style-type: none"> • Applications where low odor & extreme durability are concerns • Vehicular decks 	<ul style="list-style-type: none"> • Pedestrian decks • Mechanical room • ASTM C957 • ASTM D4060 • CSA S413-14 • ASTM D1353 • ASTM D412
Vulkem® 951NF	High-performance, aliphatic, low-odor/low-VOC, UV-resistant topcoat for pedestrian (medium duty) and vehicular (heavy duty) applications.	<ul style="list-style-type: none"> • Applications where low odor & extreme durability are concerns • Vehicular decks 	<ul style="list-style-type: none"> • Pedestrian decks • Mechanical room • ASTM C957 • ASTM D4060 • CSA S413-14 • ASTM D1353 • ASTM C957
Vulkem® 346	Aliphatic, polyurethane, elastomeric coating that is applied after the base coat has cured.	<ul style="list-style-type: none"> • Vehicular decks 	<ul style="list-style-type: none"> • ASTM C957 • ASTM D2240 • ASTM D412 • ASTM D1353 • ASTM D4060 • CSA S413-14
Vulkem® 351/351NF	Slip-resistant pedestrian topcoat to be applied after the basecoat has cured, affording excellent abrasion resistance and outstanding elongation and recovery to expand and contract with substrates.	<ul style="list-style-type: none"> • Pedestrian decks • Athletic surface • Roof terrace 	<ul style="list-style-type: none"> • ASTM D412 • ASTM C661-83 • ASTM C794 • CSA S413-14 • ASTM E96 • ASTM D1353 • ASTM D1640
Specialty Coatings			
Vulkem® OC810 & Tremco® Rubber Aggregate	One-coat, low-odor, low-VOC polyurethane deck coating with rubber aggregate for light traffic pedestrian applications.	<ul style="list-style-type: none"> • Balconies • Mechanical room 	<ul style="list-style-type: none"> • Roof terraces • ASTM D4541 • ASTM D412 • CSA S413-14 • ASTM D4060 • ASTM D1353
Vulkem® 801	Heavy-duty, aluminized, one-part, polyurethane coating affording high tensile and tear strengths and elongation.	<ul style="list-style-type: none"> • Horizontal and vertical applications • Cisterns/Cooling towers 	<ul style="list-style-type: none"> • ASTM D412 • ASTM C836 • ASTM G23 • ASTM C739 • ASTM C957 • ASTM E96 • ASTM D1640 • CSA S413-14
Pedestrian Systems			
Vulkem® 350NF/351NF	An attractive composite pedestrian deck coating waterproofing system comprised of a tough curing liquid polyurethane.		
Vulkem® 350NF/950NF or 951NF	Neighbor-friendly, low odor, VOC-compliant waterproofing system that cures to form an attractive, seamless elastomeric membrane system.		
Vulkem® 360NF/950NF or 951NF	Nearly 100% solids, VOC-compliant system that is extremely durable and can be installed in a fast-track method.		
Vulkem® EWS Pedestrian	Extremely durable, fast curing system that can be put into use one hour after application.		
Vehicular Systems			
Vulkem® 350NF/346/346	A modified polyurethane traffic deck coating system designed to have tenacious adhesion, extreme impact- and abrasion-resistance along with remarkable chemical stability.		
Vulkem® 350NF/950NF/951NF	Neighbor-friendly, VOC-compliant system that is extremely durable and is ideal for applications requiring a low odor system.		
Vulkem® 350NF/Epoxy WC/346	A polyurethane coating system featuring an epoxy wear course that provides enhanced durability compared to standard urethane-only systems.		
Vulkem® 360NF/950NF/951NF	Neighbor-friendly, nearly 100% solids, VOC-compliant system that is extremely durable and can be installed in a fast-track method.		
Vulkem® EWS Vehicular	Extremely durable, fast curing system that can be put into use one hour after application.		
Heavy Duty System			
Vulkem® EWS Heavy Duty	Extremely durable, fast curing system that can be put into use one hour after application.		

NF = Neighbor-Friendly SL = Self-Leveling R = Roller

Expansion Joints

Industry-leading expansion joint systems featuring monolithic liquid polyurethane-methacrylate (PUMA) and Willseal* pre-compressed, silicone-impregnated foams provide a strong bond to surrounding substrates, while providing superior durability and excellent movement capabilities.



Joint	Description	Basic Uses	Applicable Standards
PUMA Expansion Joints			
Tremco® PUMA EJS (Expansion Joint System)	Monolithic, liquid polyurethane-methacrylate (PUMA) expansion joint system with superior durability and excellent movement capabilities	<ul style="list-style-type: none"> • New construction expansion joints • Expansion joint restoration 	<ul style="list-style-type: none"> • ASTM C1305 • ASTM D1970 • ASTM D5602 • ASTM D1353 • ASTM D5147
Pre-Compressed Foam Joints			
Willseal® 250	Pre-compressed, self-expanding open micro-cell polyurethane foam impregnated with a self-extinguishing hydrophobic acrylic emulsion with a factory-applied traffic rated silicone sealant. Designed to provide a watertight seal in structures with shear and rapid movement. Up to 100% (±50%) movement capability. Monolithic construction.	Horizontal Expansion Joints: <ul style="list-style-type: none"> • Parking Garages • Plaza Decks • Airport Runways & Taxiways • Stadiums • Bridges 	
Willseal® 250R	Pre-compressed, self-expanding open micro-cell polyurethane foam impregnated with a self-extinguishing hydrophobic acrylic emulsion with patent pending reinforced bellows with a factory applied traffic rated sealant. The reinforcing bars stiffen the bellows, providing increased stability to the expansion joint. Up to 100% (±50%) movement capability. Monolithic construction.	Horizontal Expansion Joints: <ul style="list-style-type: none"> • Parking Garages • Plaza Decks • Mall Entrances • Pedestrian and vehicular bridges • Stadiums • Skyways • Concourses 	
Willseal® 600	Pre-compressed, self-expanding foam joint seal, engineered to perform as a highly flexible, weather-tight, primary seal in vertical exterior applications. The high-density polyurethane foam is impregnated with a modified flame retardant, hydrophobic, UV stable acrylic resin and treated with a pressure-sensitive adhesive on one side for ease of installation. Resistant to driving rain up to 600 Pa.	Vertical Expansion Joints: <ul style="list-style-type: none"> • Expansion joints between tilt-up panels in commercial structures • Joints in pre-cast concrete, masonry & brick façades • Metal roofing panels • Exterior Insulation and Finish Systems (EIFS) • Recreational vehicles • Log homes 	
Willseal® 600S	Pre-compressed, self-expanding foam joint seal, engineered to perform as a highly flexible, secondary seal in vertical exterior applications. Willseal 600S is specifically designed to provide the ideal foundation for a large variety of wet sealants, such as silicone, polyurethane, polysulfide, and acrylic.	Vertical Expansion Joints: <ul style="list-style-type: none"> • Control, isolation & retrofit joints • Construction joints behind a wet seal • Joints in pre-cast concrete, masonry, brick and facades • Roofing and insulated metal panels • Exterior insulation finish systems (EIFS) • Window and flashing applications • Interior vapor, dust, acoustical and air control 	
Willseal® FR-V	Fire-rated, pre-compressed, watertight, UV stable foam, with an integral smoke barrier within the fire-retardant impregnated foam body, sound-attenuating expansion joint with a pre-cured, factory-applied sealant applied to the face. Designed for vertical fire-rated expansion joints. Up to 100% (±50%) movement capability. Monolithic construction.	<ul style="list-style-type: none"> • Vertical fire-rated expansion joint systems • Primary construction joints • Expansion, control, and isolation joints • Retrofit & seismic joints 	<ul style="list-style-type: none"> • UL 2079 (ASTM E1966) • UL 263 (ASTM E119) • ASTM E1399
Willseal® FR SAF-V	Fire-rated, pre-compressed, watertight, UV stable foam, with an integral smoke barrier within the fire-retardant impregnated foam body, sound-attenuating expansion joint with a pre-cured, factory-applied pick resistant sealant applied to the face. Up to 100% (±50%) movement capability. Monolithic construction.	<ul style="list-style-type: none"> • Vertical fire-rated pick-resistant expansion joints found in schools, detention facilities, hospitals, prisons, and other government facilities 	<ul style="list-style-type: none"> • UL 2079 (ASTM E1966) • UL 263 (ASTM E119) • ASTM E1399
Willseal® FR-H	Fire-rated, pre-compressed, watertight, UV stable foam, with an integral smoke barrier within the fire-retardant impregnated foam body, sound-attenuating expansion joint with a pre-cured, factory-applied sealant applied to the face. Designed for horizontal fire-rated expansion joints. Up to 100% (±50%) movement capability. Monolithic construction.	<ul style="list-style-type: none"> • Horizontal fire-rated expansion joint systems for vehicular or pedestrian traffic • Parking Garages • Plaza Decks • Stadiums • Ceiling applications 	<ul style="list-style-type: none"> • UL 2079 (ASTM E1966) • UL 263 (ASTM E119) • ASTM E1399
Willseal® Seismic	Pre-compressed, self-expanding open micro-cell polyurethane foam impregnated with a hydrophobic, acrylic polymer and coated with a factory-applied silicone sealant. It is designed to provide a watertight, dust-proof, noise-reducing, thermally insulating, and UV stable primary seal that accommodates rapid rates of joint movement. Up to 100% (±50%) movement capability. Monolithic construction.	Vertical Expansion Joints: <ul style="list-style-type: none"> • Retrofit & Seismic joints • Joints in precast, masonry, brick • Exterior insulation finish systems (EIFS) • Exterior panel systems (masonry, granite, metal, curtainwalls) 	
Willseal® Seismic H	Pre-compressed, self-expanding open micro-cell polyurethane foam impregnated with a hydrophobic, acrylic polymer and coated with a factory-applied traffic-rated silicone sealant. It is designed to provide a watertight, dust-proof, noise-reducing, thermally insulating, and UV stable primary seal that accommodates rapid rates of joint movement. Up to 100% (±50%) movement capability. Monolithic construction.	Horizontal Expansion Joints: <ul style="list-style-type: none"> • Retrofit & Seismic joints • Horizontal movement joints • Parking Garages • Precast concrete construction 	
Willseal® Seismic SAF V	Pre-compressed, self-expanding open micro-cell polyurethane foam impregnated with a hydrophobic, acrylic polymer and coated with a factory-applied pick resistant sealant. It is designed to provide a watertight, dust-proof, noise-reducing, thermally insulating, and UV stable primary seal that accommodates rapid rates of joint movement. Up to 100% (±50%) movement capability. Monolithic construction.	<ul style="list-style-type: none"> • Vertical pick-resistant expansion joints found in schools, detention facilities, hospitals, prisons, and other government facilities 	
Willseal® Acousti-Seal	Compressible type joint sealant for both static vertical, and horizontal joints on a vertical plane comprised of a fire resistant acrylic impregnated polyurethane foam with factory coated silicone sides, Acousti-Seal can be color matched to blend in with the surrounding and for a better aesthetically pleasing appearance. Designed for interior sound, dust and draft control. Not intended for movement joints. Monolithic construction.	<ul style="list-style-type: none"> • Window-to-wall • Moveable or permanent partitions • Head of wall • Curtain wall • Partition-to-wall 	<ul style="list-style-type: none"> • ASTM E90 • ASTM E84-12B Class A
Closed-Cell Foam Joints			
Willseal® Coreseal	Lightweight, preformed closed-cell ethylene vinyl acetate (EVA) copolymer foam. It is designed to provide a watertight, dust-proof, airtight, noise-reducing, thermally insulating and UV stable primary seal that does not require invasive anchoring for installation. For use in both primary horizontal and vertical expansion joints. Up to 50% (±25%) movement capability.	<ul style="list-style-type: none"> • Control joints • Bridge expansion joints • Primary horizontal or vertical expansion joints • Parking garage expansion joints • Highway longitudinal and transverse joints • Stadiums • Plaza Decks • Below grade applications 	
Willseal® Color Coreseal V	Lightweight, preformed closed-cell ethylene vinyl acetate (EVA) copolymer foam with a pre-cured, factory-applied sealant. It is designed to provide a watertight, dust-proof, airtight, noise-reducing, thermally insulating and UV stable primary seal that does not require invasive anchoring for installation. Up to 50% (±25%) movement capability.	Vertical Expansion Joints: <ul style="list-style-type: none"> • Expansion, control and isolation joints • Retrofit & seismic joints • Pre-cast concrete walls, tilt-up walls • Exterior panel systems - Masonry, Granite, Metal, EIFS, Curtain Walls • Larger joints requiring an architectural finish 	
Willseal® Color Coreseal H	Lightweight, preformed closed-cell ethylene vinyl acetate (EVA) copolymer foam with a pre-cured, factory-applied sealant. It is designed to provide a watertight, dust-proof, airtight, noise-reducing, thermally insulating and UV stable primary seal that does not require invasive anchoring for installation. Up to 50% (±25%) movement capability.	Horizontal Expansion Joints: <ul style="list-style-type: none"> • Below grade applications • Highway longitudinal and transverse joints • Bridge & parking expansion joints • Larger joints requiring an architectural finish • Seismic, large & retrofit joints 	
Willseal® Color Coreseal SAF V	Lightweight, preformed closed-cell ethylene vinyl acetate (EVA) copolymer foam with a pre-cured, factory-applied pick resistant sealant. It is designed to provide a watertight, dust-proof, airtight, noise-reducing, thermally insulating and UV stable primary seal for areas that can be easily damaged or vandalized in institutional or other public buildings.	<ul style="list-style-type: none"> • Vertical expansion joints • Retrofit & seismic joints • Expansion, control and isolation joints • Exterior panel systems - Masonry, Granite, Metal, Curtain Walls • Joints requiring a resilient, tamper-resistant seal • Primary construction joints • Pre-cast concrete walls, tilt-up walls 	

* Willseal is a part of Tremco Construction Products Group.

Sealants & Adhesives

High-performance urethane, silicone and specialty sealants designed to seal the entire building enclosure while meeting the demanding requirements and special needs of architects, engineers, contractors and building owners.



Construction Sealants	Description	Basic Uses	Applicable Standards
Single-Component Urethane Sealants			
Dymonic [®] 100	High-performance, high movement, single-component, polyurethane sealant.	<ul style="list-style-type: none"> Expansion and control joints Precast concrete panel joints Perimeter caulking Aluminum, masonry and vinyl siding Detailing under ExoAir, Paraseal, TREMproof, and Vulkem coatings and membranes 	<ul style="list-style-type: none"> ASTM C920 Type S, Grade NS, Class 50, Use NT, T, M, A, O, I U.S. Federal Specification TT-S-00230C, Class A, Type II CAN/CGSB-19.13-M87
Vulkem [®] 116 ⁽¹⁾	Multi-purpose, single-component, polyurethane sealant.	<ul style="list-style-type: none"> Masonry Metals Vinyl Plastics Wood Certain immersion applications 	<ul style="list-style-type: none"> ASTM C920 Type S, Grade NS, Class 25, Use T, NT, M, A, I (Class 2) and O TT-S-00230C Class A, Type II Canadian Food Inspection Agency CAN/CGSB 19.13-M87 COLA
Vulkem [®] 45SSL ⁽²⁾	Semi-self-leveling, single-component, polyurethane sealant.	<ul style="list-style-type: none"> Horizontal applications up to 6% slope of masonry incl. damp/green concrete Wood 	<ul style="list-style-type: none"> ASTM C920, Type S, Grade P, Class 35, Use T, M, A, O and I (Class 2) CAN/CGSB 19.13-M87, MC-1-25-B-N
Hybrid Sealant			
Dymonic [®] FC	High-performance, high movement, single-component, hybrid sealant.	<ul style="list-style-type: none"> Expansion and control joints Precast concrete panel joints Perimeter caulking Aluminum, masonry and vinyl siding Detailing under ExoAir, Paraseal, TREMproof, and Vulkem coatings and membranes 	<ul style="list-style-type: none"> ASTM C920 Type S, Grade NS, Class 50, Use NT, T, M, A, O, I U.S. Federal Specification TT-S-00230C, Class A, Type II CAN/CGSB-19.13-M87
Multi-Component Urethane Sealants			
Dymeric [®] 240FC	Fast-curing, multi-component, polyurethane sealant.	<ul style="list-style-type: none"> Masonry Metals Vinyl Plastics Wood EIFS 	<ul style="list-style-type: none"> ASTM C920-02, Type M, Grade NS, Class 50, Use I (Class 2), T, NT, M, A and O (granite) TT-S-00227E, Class A, Type II CAN/CGSB 19.24-M90, Class B, Type II
THC-901	Multi-component, polyurethane sealant for horizontal expansion joints.	<ul style="list-style-type: none"> Horizontal applications up to 10% slope of masonry Wood 	<ul style="list-style-type: none"> ASTM C920, Type M, Grade P, Class 25, Use T, M and O TT-S-00227E, Class A, Type I USDA regulation for indirect food contact
Vulkem [®] 445SSL	Field-tintable, semi-self-leveling, multi-component, polyurethane sealant.	<ul style="list-style-type: none"> Horizontal applications up to 6% slope of masonry incl. damp/green concrete Wood 	<ul style="list-style-type: none"> ASTM C920, Type M, Grade P, Class 35, Use T, M, A, O and I (Class 2) CAN/CGSB 19.13-M87, MC-1-25-B-N
Silicone Sealants*			
Spectrem [®] 1	Single-component, moisture-cure silicone sealant.	<ul style="list-style-type: none"> EIFS Curtain walls Pre-cast concrete panels Post ExoAir membrane detailing Used to adhere Proglaze ETA Bonds to the HDPE facer of self-adhered membranes Aluminum Metal panels 	<ul style="list-style-type: none"> ASTM C920 Type S, Grade NS, Class 100/50, Use NT, M, G, A and O CAN/CGSB 19.13-M87, MCG-2-40-B-N TT-S-001543A (COM-NBS) Class A TT-S-00230C (COM-NBS) Class A, Type II EIMA Test Method 300.01 NFPA 285 ASTM C1248 ASTM C1382 ASTM E84 SWRI Validation
Spectrem [®] 2	Single-component, neutral-cure silicone sealant for 2-sided structural glazing.	<ul style="list-style-type: none"> Structural glazing (tensile and weather bead), window perimeter caulking and general glazing applications such as toe beads, heel beads and cap beads 	<ul style="list-style-type: none"> ASTM C920 Type S, Grade NS Class 50, Use NT, M, G, A and O ASTM C1248 TT-S-001543A (COM-NBS) Class A TT-S-00230C (COM-NBS) Class A, Type II Black meets all of AAMA 802.3-92 (Type I & II), 805.2-94 (Group C) & 808.3-92 CAN/CGSB 19.13-M87 SWRI Validation
Spectrem [®] 3	Single-component, neutral-cure, non-staining silicone sealant.	<ul style="list-style-type: none"> EIFS Aluminum Curtain walls Metal panels Window perimeters Masonry Porous stone Pre-cast concrete joints 	<ul style="list-style-type: none"> ASTM C920 Type S, Grade NS, Class 50, Use NT, G, M, A and O ASTM C1248 TT-S-00230 Class A ASTM C1382 CAN/CGSB 19.13-M87 TT-S-001543A Class A EIMA Test Method 300.01
Spectrem [®] 4-TS	Multi-component, neutral-cure, non-staining silicone sealant.	<ul style="list-style-type: none"> EIFS Aluminum Curtain walls Metal panels Window perimeters Masonry Porous stone Pre-cast concrete joints 	<ul style="list-style-type: none"> ASTM C920, Type M, Grade NS, Class 50, Use NT, G, M, A and O ASTM C1248 TT-S-001543A Class A EIMA Test Method 300.01 TT-S-00230 Class A CAN/CGSB 19.13-M87 ASTM C1382
Spectrem [®] 800/900SL	Single-component, moisture-cure, silicone sealants for highway and parking applications.	<ul style="list-style-type: none"> Parking decks Parking structures Parking garages Airport runways 	<ul style="list-style-type: none"> ASTM C920, Type S, Grade NS (Spectrem 800), Grade P (Spectrem 900 SL), Class 100/50, Use T, M, A and O TT-S-00230C, Type II, Class A (Spectrem 800) TT-S-00230C, Type I, Class A (Spectrem 900SL) CAN/CGSB 19.13-M87, MCG-2-40-B-N TT-S-001543A, Class A
Tremsil [®] 200	Single-component, acetoxysilicone sealant.	<ul style="list-style-type: none"> Weather tight seal to glass, metal, porcelain, ceramic and most painted surfaces. White and Clear available with fungicide 	<ul style="list-style-type: none"> ASTM C920, Type S, Grade NS, Use NT, G, A and O CAN/CGSB 19.13-M87 TT-S-00230 Class A TT-S-001543A Class A
Tremsil [®] 600	Single-component, neutral-cure silicone sealant for glazing.	<ul style="list-style-type: none"> Backbedding sealant with excellent adhesion to aluminum, stainless steel, metals, glass, plastics, rigid PVCs, wood and painted surfaces 	<ul style="list-style-type: none"> ASTM C920 Type S, Grade NS, Use NT, G, A and O TT-S-00230C (COM-NBS) Class A TT-S-001543A (COM-NBS) Class A AAMA 800-92 CAN/CGSB 19.13-M87
Specialty Sealants			
Tremflex [®] 834	Acrylic latex sealant.	<ul style="list-style-type: none"> Is paintable Interior walls, ceilings and floors 	<ul style="list-style-type: none"> ASTM C834, Type OP, Grade -18°C CAN/CGSB 19-GP-17M ASTM E84
Tremco [®] 830**	Thermoplastic, elastomeric glass and siding sealant.	<ul style="list-style-type: none"> Face glazing Joints in vinyl siding/mitre joints 	<ul style="list-style-type: none"> CAN/CGSB 19.0M ASTM C793 ASTM C719
Acoustical / Curtainwall Sealant	One-part, non-skinning, sound damping sealant.	<ul style="list-style-type: none"> Drywall partitions & corridors Concealed lap joints & perimeter sealant May be used in contact with polystyrene Concealed metal-to-metal curtain wall joints Bedding for panels, sheets, rails, moldings and other types of sleeves or connections to aluminum window wall and curtain wall systems 	<i>No applicable standards exist for this product.</i>
Tremco [®] Butyl Sealant	General purpose butyl sealant.	<ul style="list-style-type: none"> Metal-to-metal joinery Rubber-to-metal Bedding compound 	<ul style="list-style-type: none"> TT-S-001657, Type I CAN/CGSB 19-GP-14M ASTM C1311
Adhesives			
TREMrip [®]	One-component, non-sag, elastic adhesive based on hybrid polymers.	<ul style="list-style-type: none"> Indoor/outdoor on a variety of uses, including (but not limited to) drainage board in backfilled applications, air barrier applications, and insulation to air barriers and below-grade membranes. 	<ul style="list-style-type: none"> ASTM D412 ASTM C661 ASTM C719 (In Progress) ASTM D624 ASTM C679 ASTM C961

SSL = Semi-Self-Leveling TS = Tintable Silicone SL = Self-Leveling

⁽¹⁾Use Vulkem Catalyst 116 for quick cure. ⁽²⁾Use water for quick cure (Please contact Technical Services at 866.209.2404 for more information.) *Refer to Glazing section for Proglaze II and Proglaze SSG. **Product not for use in the United States.

Firestopping

Passive fire protection products with more than 400 independently tested, fire-rated systems for through-penetrations and joints.



Firestopping	Description	Basic Uses		Applicable Standards	
TREMstop® IA+	High-performance water-based intumescent acrylic sealant for use in firestopping general applications for commercial construction.	<ul style="list-style-type: none"> Plumbing Electrical 	<ul style="list-style-type: none"> Mechanical Telecommunications 	<ul style="list-style-type: none"> ASTM E814 UL1479 UL 2079 ASTM E1966 	<ul style="list-style-type: none"> CAN/ULC S115 ASTM E84 UL723
TREMstop® Acrylic <i>SP grade available</i>	Flexible acrylic sealant for use in both through-penetrations and fire-rated joints and gaps.	<ul style="list-style-type: none"> Fire-rated & smoke-rated joints Smoke partition joints & penetrations Plumbing Electrical 	<ul style="list-style-type: none"> Telecommunications Mechanical 	<ul style="list-style-type: none"> UL1479 ASTM E814 UL723 ASTM E84 E2307* CAN/ULC-S101M 	<ul style="list-style-type: none"> UL2079 ASTM E1966 ASTM E1399 CAN/ULC S115 ASTM E90 UL 263 (ASTM E119)
TREMstop® Silicone (Fyre-Sil) <i>SL grade available</i>	Medium modulus, neutral cure, one-part silicone sealant for use in both through-penetrations and fire-rated joints.	<ul style="list-style-type: none"> Fire-rated & smoke-rated joints Smoke partition joints & penetrations Plumbing Mechanical 	<ul style="list-style-type: none"> Electrical Telecommunication 	<ul style="list-style-type: none"> UL1479 ASTM E814 UL723 ASTM E84 E2307** 	<ul style="list-style-type: none"> UL2079 ASTM E1966 ASTM E1399 CAN/ULC S115
TREMstop® Smoke & Sound <i>SP grade available</i>	High-performance acrylic sealant formulated to provide a pliable seal with minimal shrinkage that affords code compliance when used on smoke-rated partitions.	<ul style="list-style-type: none"> Smoke partition joints & penetrations 		<ul style="list-style-type: none"> ASTM E84 ASTM C834 	<ul style="list-style-type: none"> ASTM E90
TREMstop® SuperStrip	Pre-cut intumescent wrap strip for combustible penetrations.	<ul style="list-style-type: none"> Plumbing 	<ul style="list-style-type: none"> Mechanical 	<ul style="list-style-type: none"> ASTM E814 CAN/ULC S115 	<ul style="list-style-type: none"> UL1479
TREMstop® MP	Moldable, intumescent putty available in easy-to-use pad forms for electrical outlet boxes.	<ul style="list-style-type: none"> Electrical 		<ul style="list-style-type: none"> UL263 	<ul style="list-style-type: none"> CAN/ULC S101

SP = Spray SL = Self-Leveling * Spray Grade Only ** Gun Grade Only

PUMA Technology

Tremco systems with polyurethane-methacrylate (PUMA) technology feature extreme durability, fast cure independent of temperature, crack-bridging, superior adhesion and abrasion resistance.




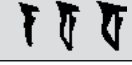






PUMA Systems	Description	Basic Uses		Applicable Standards	
Vulkem® EWS Pedestrian	Extremely durable, fast curing system that can be put into use one hour after application.	<ul style="list-style-type: none"> Walkways Mechanical rooms 	<ul style="list-style-type: none"> Balconies 	<ul style="list-style-type: none"> ASTM C957 ASTM D2240 UL 790 	<ul style="list-style-type: none"> ASTM C1305 ASTM D5147
Vulkem® EWS Vehicular	Extremely durable, fast curing system that can be put into use one hour after application.	<ul style="list-style-type: none"> Ramps Helical turns 	<ul style="list-style-type: none"> Ticket spitters Drive lanes 	<ul style="list-style-type: none"> ASTM C957 ASTM D2240 UL 790 	<ul style="list-style-type: none"> ASTM C1305 ASTM D5147
Vulkem® EWS Heavy Duty	Extremely durable, fast curing system that can be put into use one hour after application.	<ul style="list-style-type: none"> Loading docks Heavy equipment facilities 	<ul style="list-style-type: none"> Dumpster areas 	<ul style="list-style-type: none"> ASTM C957 ASTM D2240 UL 790 	<ul style="list-style-type: none"> ASTM C1305 ASTM D5147
Vulkem® EWS Specialty	Extremely durable, fast curing system that can be put into use one hour after application.	<ul style="list-style-type: none"> Helipads Under tile Water features 	<ul style="list-style-type: none"> Decorative quartz Pool decks 	<ul style="list-style-type: none"> ASTM C957 ASTM D2240 UL 790 	<ul style="list-style-type: none"> ASTM C1305 ASTM D5147
TREMproof® PUMA Waterproofing	Cold-applied waterproofing system that utilizes polyurethane-methacrylate (PUMA) technology for quick turnaround and cold weather applications.	<ul style="list-style-type: none"> Split-slab Planters Asphalt overlay 	<ul style="list-style-type: none"> Vegetated roofs Flashing 	<ul style="list-style-type: none"> ASTM D1353 ASTM C1305 	
Tremco PUMA EJS (Expansion Joint System)	Monolithic, liquid polyurethane-methacrylate (PUMA) expansion joint system with superior durability and excellent movement capabilities	<ul style="list-style-type: none"> New construction expansion joints Expansion joint restoration 		<ul style="list-style-type: none"> ASTM C1305 ASTM D1970 ASTM D5602 	<ul style="list-style-type: none"> ASTM D1353 ASTM D5147



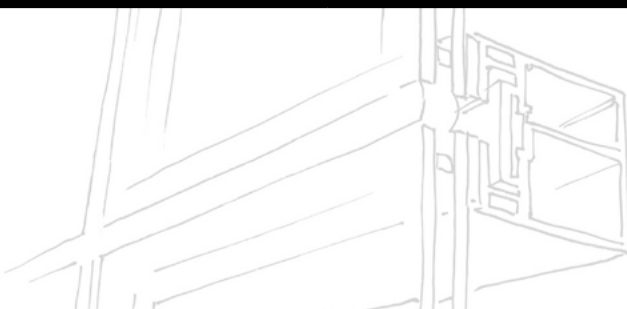
Glazing

A complete line of glazing sealants and compatible gaskets, tapes, spacers and setting blocks for use in commercial curtain wall and window applications, allowing the design of integrated systems with assurance of adhesion, weatherability and durability.



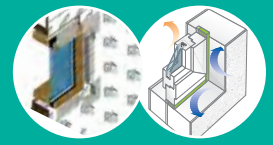
Glazing	Description	Basic Uses	Applicable Standards
Sealants			
Proglaze®	Single-component, moisture-cure, acetoxy silicone sealant for glazing.	<ul style="list-style-type: none"> In-plant glazing applications such as cap bead, toe bead, heel beads and metal-to-metal joinery 	<ul style="list-style-type: none"> ASTM C920 Type S, Grade NS, Use NT, G, A and O CAN/CGSB 19.13-M87, MG-2-25-A-L TT-S-00230C (COM-NBS) Class A TT-S-001543A (COM-NBS) Class A
Proglaze® II	Multi-component, neutral-cure, silicone sealant for structural glazing.	<ul style="list-style-type: none"> Structural glazing (tensile and weather bead), hurricane/impact and blast mitigation 	<ul style="list-style-type: none"> ASTM C920 Type M, Grade NS, Class 25, Use NT, G and A TT-S-00227E Class A, Type II
Proglaze® SSG	Single-component, neutral-cure, silicone sealant for structural glazing.	<ul style="list-style-type: none"> Structural glazing (tensile and weather bead), hurricane/impact and blast mitigation 	<ul style="list-style-type: none"> ASTM C920 Type S, Grade NS, Use NT, G, A and O CAN/CGSB 19.13-M87 TT-S-00230C (COM-NBS) Class A, Type II TT-S-001543A (COM-NBS) Class A
Spectrem® 1	Single-component, moisture-cure silicone sealant.	<ul style="list-style-type: none"> EIFS Curtain walls Window perimeters With Spectrem Simple Seal With ExoAir air barriers Bonds well to the HDPE facer of self-adhered membranes Aluminum Metal panels Cap beads 	<ul style="list-style-type: none"> ASTM C920 Type S, Grade NS, Class 100/50, Use NT, M, G, A and O ASTM C1248 ASTM E84 CAN/CGSB 19.13-M87, MCG-2-40-B-N TT-S-001543A (COM-NBS) Class A TT-S-00230C (COM-NBS) Class A, Type II EIMA Test Method 300.01 ASTM C1382 ASTM C1382 SWRI Validation NFPA 285
Spectrem® 2	Single-component, neutral-cure silicone sealant for 2-sided structural glazing.	<ul style="list-style-type: none"> Structural glazing (tensile and weather bead), window perimeter caulking and general glazing applications such as toe, heel and cap beads 	<ul style="list-style-type: none"> ASTM C920 Type S, Grade NS Class 50, Use NT, M, G, A and O ASTM C1248 CGSB 19.13-M87 TT-S-00230C SWRI Validation
Spectrem® Simple Seal	Spectrem Simple Seal is a ultra-low modulus, performed silicone extrusion specifically designed to have high elongation properties. Simple Seal is typically bonded with Spectrem 1 Silicone Sealant to a wide range of substrates to provide a watertight seal.	<ul style="list-style-type: none"> Tremco Spectrem Simple Seal is designed for both new construction and restoration work involving window perimeter, EIFS joints, parapet walls, skylights, aluminum window seals, transition seals, curtain walls joints, sheet metal roofs, and other lap joints. SWRI Validated 	
Tremsil® 600	Single-component, neutral-cure silicone sealant for glazing.	<ul style="list-style-type: none"> Back bedding sealant with excellent adhesion to aluminum, stainless steel, metals, glass, plastics, rigid PVCs, wood and painted surfaces 	<ul style="list-style-type: none"> ASTM C920 Type S, Grade NS, Use NT, G, A and O TT-S-00230C (COM-NBS) Class A TT-S-001543A (COM-NBS) Class A AAMA 800-92 CAN/CGSB 19.13-M87
Tapes			
440 Tape	100% solid polyisobutylene cross-linked butyl, preformed sealant.	<ul style="list-style-type: none"> Non-compression glazing Metal-to-metal lap seals 	<ul style="list-style-type: none"> AAMA 804.3/807.3
PolyShim® II	100% solids, cross-linked butyl preformed tape with a continuous integral EPDM shim.	<ul style="list-style-type: none"> Compression glazing systems Spacer for structural silicones 	<ul style="list-style-type: none"> ASTM D1667 ASTM D2240 ASTM D412
SGT-900 Series	Open cell, high-density polyurethane foam tapes with a micro-cellular structure with PSA on one or both sides.	<ul style="list-style-type: none"> Compatible spacer for Structural Glazing Systems 	<ul style="list-style-type: none"> ASTM D1667 ASTM D2240 ASTM D412
Extrusions			
Arrow-Shim	Precision extruded EPDM drive-in spacer-shims.	<ul style="list-style-type: none"> Controls proper spacing Recess for cap bead Uniform cushion for glass 	<p>Typical Profiles</p> 
Poly-Wej	Extruded in EPDM compound for use in compression glazing systems.	<ul style="list-style-type: none"> Compression wedge for PolyShim Tape Compression wedge for dense/dense systems 	
Glazing Spline	An extruded EPDM compound for use in compression glazing systems.	<ul style="list-style-type: none"> Compression wedge for PolyShim Tapes and compatible gunnable sealants Compression spline for dense/dense systems 	
Vision Strip®	A co-extruded composite made up of EPDM rubber at the sightline and polyisobutylene, preformed butyl sealant.	<ul style="list-style-type: none"> Compression glazing systems Control proper glass spacing Positive wet seal between glass and metal 	
Cellular	Closed cell EPDM extruded rubber.	<ul style="list-style-type: none"> Pre-set compression gasket Weatherstripping Operating vent seals 	
Dense EPDM	40, 50, 60, 70 and 90 durometer Shore A extruded EPDM.	<ul style="list-style-type: none"> Compression wedge gaskets Weatherstripping Setting and edge blocks 	
Dense Silicone	40, 60, 70 and 80 durometer Shore A extruded silicone rubber.	<ul style="list-style-type: none"> Compression wedge gaskets Structural glazing back-up spacers Setting and edge blocks 	
Spectrem® Restoration Overlay	60 and 70 durometer Shore A extruded silicone rubber used in restoration applications.	<ul style="list-style-type: none"> Custom-designed to restore aging and/or compromised glazing systems including: Sylights Zipper wall / lockstrip systems Pressure bar systems Sloped glazing 	
Dense SCR-900	60, 70 and 80 durometer Shore A extruded Silicone Compatible Rubber.	<ul style="list-style-type: none"> Compression wedge gaskets Pre-set dense spacers Weatherstripping 	

Most compounds available comply with: ASTM C509, Option I and II; ASTM C864, Option I and Option II; ASTM C1115, Type C



Transitions

Innovative, pre-engineered, airtight and watertight systems designed to provide continuity at critical transitions from window or structural framing to adjacent air and vapor barrier systems.



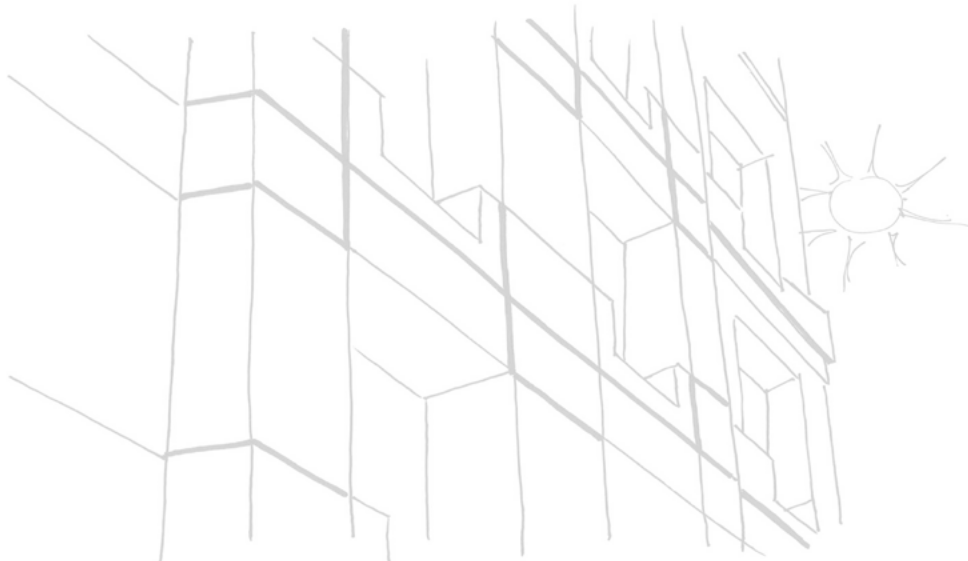
Transition	Description	Basic Uses	Applicable Standards
Engineered Transition Assembly			
Proglaze® ETA	A turnkey solution comprised of pre-engineered, finished aluminum and silicone materials assembled and mechanically attached to simplify installation of tie-ins or transitions from air barriers to window or curtain wall systems.	A continuous, compatible and durable connection from the window or curtain wall system to wall assemblies. <ul style="list-style-type: none"> Expansion Joints Seismic Joints Used in conjunction with the ExoAir membranes 	<i>The system as a whole was tested according to the following Test Methods:</i> <ul style="list-style-type: none"> ASTM E283-04 ASTM E330-02 AAMA 501.1 ASTM E331-00 ASTM E547-00 AAMA 501.4 ASTM E84 ASTM E96 NFPA 285
Polyurethane Foams			
ExoAir® Flex	Single-component, moisture-cure, gun-grade polyurethane flexible foam that performs as a thermal barrier with an industry leading movement range of +/-15%	<ul style="list-style-type: none"> Best suited as a thermal and sound barrier to be used in the perimeters around windows and doors. Flexible composition is well-suited for applications that incur movement. 	<ul style="list-style-type: none"> AAMA 812 ASTM D2842
ExoAir® LEF	Single-component, moisture-curing, gun-grade polyurethane foam.	<ul style="list-style-type: none"> Used to fill gaps surrounding penetrations prior to air barrier installation. Best suited around window and door frame joints but can also be used as an effective joint filler. 	<ul style="list-style-type: none"> ASTM E84
Pre-Formed Transition Extrusions			
Dymonic® Simple Seal	Medium-modulus, preformed polyurethane extrusion specifically designed to bridge joints under elastomeric wall coatings. Dymonic Simple Seal is typically bonded with Dymonic 100 polyurethane sealant to a wide range of substances to provide a watertight seal.	Tremco Dymonic Simple Seal is designed for both new construction and restoration work involving expansion joints, window/door perimeters, EIFS joints, parapet walls, skylights, transition seals, curtain wall joints, sheet metal roof joints and other lap joints that will be coated with an elastomeric coating.	<ul style="list-style-type: none"> ASTM D2240 ASTM D412
Spectrem® Simple Seal	Spectrem Simple Seal is a ultra-low modulus, performed silicone extrusion specifically designed to have high elongation properties. Simple Seal is typically boded with Spectrem 1 Silicone Sealant to a wide range of substrates to provide a watertight seal.	Tremco Spectrem Simple Seal is designed for both new construction and restoration work involving window perimeter, EIFS joints, parapet walls, skylights, aluminum window seals, transition seals, curtain walls joints, sheet metal roofs, & other joints.	<ul style="list-style-type: none"> SWRI Validated

Architectural Wall Coatings

Architectural wall coatings to restore aesthetic appeal and the extend the life of a building's exterior concrete and masonry surfaces.



Wall Coating Systems	Description	Basic Uses	Applicable Standards
TREMGard HB	TREMGard HB is a high-build, fiber reinforced, water-based, acrylic wall coating formulated to provide a tough, durable, flexible, and breathable film protection for concrete and masonry surfaces. TREMGard HB can be applied in a single coat up to 32 wet mils and can be used to bridge cracks.	Exterior and interior above-grade substrates, concrete, cast-in-place or pre-cast, concrete masonry units (CMU), previously painted masonry, brick, stone, exterior insulation finish systems (EIFS), stucco, can be used on metal and PVC with TREMprime Non-Porous Primer	<ul style="list-style-type: none"> ASTM D1475 ASTM D1644 ASTM D4798 ASTM D624 ASTM D522 ASTM C794/D903 ASTM D562 ASTM D2967 ASTM D1653 ASTM D2370 ASTM DG21





See how Tremco and Dryvit — now both part of the Tremco Construction Products Group — teamed up to help this building's owner maximize energy efficiency, and completely modernize the aesthetic at the same time.

<https://youtu.be/atHiErInQWk>

500 Pacific Ave. | Bremerton, Washington

Tremco Traffic Coatings | Tremco Sealants
Dryvit Panelization Systems



Part of Tremco Construction Products Group

Tremco Commercial Sealants & Waterproofing | 3735 Green Road | Beachwood, OH 44122 | US: 800.852.9068 | CAN: 800.363.3213 | tremcosealants.com

Willseal | 34 Executive Drive | Hudson, NH 03051 | 800.274.2813 | CAN: 800.363.3213 | willseal.com

Tremco Construction Products Group (CPG) brings together Tremco Incorporated's Commercial Sealants & Waterproofing and Roofing & Building Maintenance operating divisions; Dryvit Systems, Inc.; Nudura Inc.; Willseal; Weatherproofing Technologies, Inc. and Weatherproofing Technologies Canada, Inc.



Construction Products Group

Dymonic®, Dymeric®, EvoAir®, Ilmod 600®, Paraseal®, PolyShim®, Proglaze®, Spectrem®, Tremco®, Tremflex®, TREMGrip®, TREMProof®, TremSil®, TREMstop®, Vulkem® and Vision Strip® are registered trademarks of Tremco Incorporated. Permaquik® is a registered trademark of RPM Canada. Dryvit® is a registered trademark of Dryvit Systems, Inc. Nudura® is a registered trademark of Nudura Inc. Willseal is a registered trademark of Schuf International Co., LLC. Use of the ® symbol indicates registration with the US Patent & Trademark Office and the Canadian Intellectual Property Office.

tremcocpg.com

tremcocpg.com

