

# Complete Doorway Solutions

**ASSA ABLOY**

Security, Life-Safety, Sustainability & Design

The global leader in  
door opening solutions



ASSASSINATIONS | COMPLIANCE | DOCUMENTATION | SECURITY, LIFE-SAFETY & DESIGN

# Who is ASSA ABLOY Door Security Solutions?

ASSA ABLOY Door Security Solutions, a division of ASSA ABLOY, the global leader in door opening solutions, represents leading door and hardware brands. Our goal is to help facilities improve all aspects of doorway security, life-safety, sustainability and design.

With brands rich in history and known for quality, a nationwide network of local specification consultants, product experts and distributors along with unrivaled educational and training opportunities, we offer the broadest range of product solutions and services in the door and hardware industry.

ADAMS RITE | BARON | CECO DOOR | CORBIN RUSSWIN | CURRIES | FRAMEWORKS  
GRAHAM | HES | MAIMAN | MARKAR | MCKINNEY | MEDECO | NORTON | PEMKO  
RIXSON | ROCKWOOD | SARGENT | SECURITRON | SMP SPECIALTY DOORS | YALE

# Our Product Portfolio

Our expansive product line includes all components in and around the door opening.

**Doors and Frames:** *Wood, steel and aluminum*

**Access Control and Egress Hardware:** *Mechanical and electromechanical cylinders and locks, access control locks, electric strikes, exit devices, and power supplies*

**Door Controls:** *Closers, overhead stops, holders and automatic operators*

**Accessories:** *Hinges, pivots, flatgoods, door trim, weatherstripping, thresholds, lites and louvers*

# Contents

- Security & Loss Prevention . . . . . 3
- Life-Safety . . . . . 13
- Sustainable Building Solutions . . . . . 21
- Decorative Openings . . . . . 29
- Services & Training . . . . . 39



# Security & Loss Prevention

Today's facility owners face unique challenges in protecting their occupants, employees, data and property - both intellectual and physical. Our offering of door and hardware solutions includes the broadest range of security products and technologies in the industry. Our highly specialized team of door security experts take the time to understand an organization's challenges and recommend the appropriate solution to match the risk at each opening.





## Comcast Center

*Philadelphia, PA*

One of the nation's tallest green office buildings boasts high performance products throughout its entire 57 stories, including openings equipped with door and hardware products from ASSA ABLOY Group brands: CURRIES, McKINNEY and SARGENT. For increased measures of protection, the facility utilizes a SARGENT Signature® key system.

# Properly Secure Every Opening

Every door opening in a building is different. Each has unique usage requirements. Careful consideration of each opening based on usage and risk allows for the proper selection of access control, enhancing the security of a facility and keeping costs in line. From mechanical locks and keys to intelligent openings, our brands offer comprehensive solutions for any application.

## The Security Continuum



ASSA ABLOY offers a complete range of technologies with increasing capabilities designed to address today's security requirements.

## Mechanical Locks

Solid and reliable mechanical hardware is the foundation of effective security. Our products have been proven to far exceed industry standards and are designed for quick and easy installation.

- Mortise locks are extremely strong and durable; our Grade 1 offering is ideal for high traffic and high abuse openings; a variety of trim options and functions are available for a broad range of applications
- Bored locks are easily installed and available in Grade 1 or 2 options; they come in a wide selection with options for basic functions for light or medium duty applications to special construction for the most demanding environments
- Auxiliary locks are available in an assortment of deadbolts, padlocks and cabinet locks built for strength and longevity

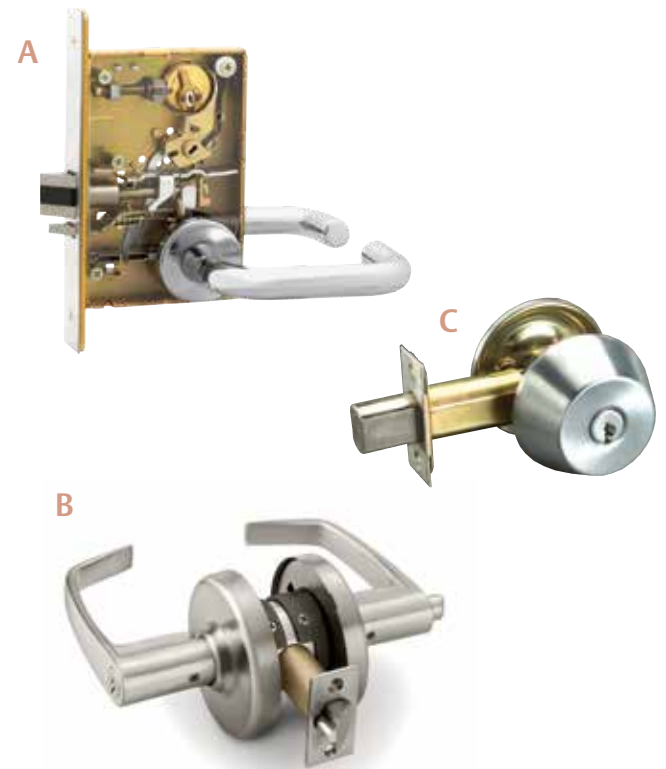
## Products

A complete assortment of mortise, cylindrical and auxiliary locks are available from SARGENT, CORBIN RUSSWIN and YALE.

- A SARGENT 8200 Series mortise lock
- B CORBIN RUSSWIN CL3100 Series bored lock
- C YALE cylindrical deadbolt

## Applications

- General facility security



## Cylinders & Key Systems

Our brands were early innovators in the field of key systems. Though much has changed in cylinder mechanics and how facilities secure their doors, key systems are still the backbone of facility security, and we remain the leader in key system technology. Our brands are continuously upgrading their key systems to meet new challenges that confront the market.

The most basic level of protection is a typical mechanical cylinder with a legacy key system. This key can easily be duplicated and thus offers very low level security. Our brands offer varying levels of protection to enhance legacy key systems, including:

- Patented key systems that protect against unauthorized key duplication
- Geographic exclusivity that further restricts how a key can be duplicated
- Cylinders listed to UL437 offer protection against picking, drilling and physical attack



E

## Keypad Access Control

Keypad locks offer basic access control capabilities. Typically programmed by visiting the door, these battery powered locks provide security using a keypad only. Designed for areas that require stand-alone 'authorized entry' capability, these locks combine the physical security of an ANSI Grade 1 mechanical locking mechanism with an electronic keypad. This is ideal for controlling access to secured locations not connected to a larger access control system.

- Easy, affordable upgrade from mechanical locks
- Allows users to manage locks locally
- Fast, simple installation
- Flexibility to add and remove users without issuing keys



### Products

- D SARGENT Degree™
- E CORBIN RUSSWIN Access 3®
- F MEDECO<sup>3</sup>
- G MEDECO BiLevel
- H MEDECO X4
  - MEDECO<sup>3</sup> Logic
  - MEDECO Logic
  - MEDECO Hybrid Key
- SARGENT Signature®
- SARGENT Keso
- SARGENT XC

#### Notes:

- Hybrid keys can be used with any of the above MEDECO systems to add contactless credentials to a mechanical key system
- Medeco<sup>3</sup>, Medeco BiLevel and Medeco<sup>3</sup> Logic can be part of the same system and share a common key

### Applications

- General facility security
- Offices

### Products

- I SECURITRON DK-12
- J SARGENT KP Series
- K YALE inTouch™
  - ADAMS RITE eForce®-150
  - SECURITRON DK-16
  - SECURITRON DK-26
  - SECURITRON DK-37
  - SECURITRON DK-38

### Applications

- Professional offices within a building
- Side entrances in commercial, retail or office buildings
- Utility areas or supply closets



## Offline Access Control



Offline locks and eCylinders offer an economical solution for customized access control.

### Lock Features

- ANSI/BHMA Grade 1 hardware, offering the highest degree of physical security available in access control locks
- Programming is accomplished through the use of a PDA or data transfer device and PC based software
- Locks support up to 1,200 users per door and a 700 event transaction history - all maintained in lock memory
- Locks support HID® 125 kHz proximity credentials; also available with keypad and/or magnetic stripe
- Uses standard batteries for easy deployment and maintenance
- Can be used with RF Fob for localized lockdown capabilities (CORBIN RUSSWIN Access 800® AC2 or SARGENT Profile Series v.G1.5 only)

### eCylinder Features

- A straightforward and cost-effective security solution that provides flexibility and accountability
- The same easy installation as mechanical cylinders, but with the advantages of an electromechanical access control system
  - Audit trails
  - Schedules
  - Digital rekeying
  - Dual credential capabilities
- Digital keys and cylinders from MEDECO provide:
  - Sophisticated loss and liability control without any wiring, door and frame modifications, or additional hardware
  - Easy administration with PC or web software and ability to program keys remotely or via mobile devices

### Products

- A MEDECO XT™
- B MEDECO<sup>3</sup> Logic®
- C SARGENT Profile Series v.G1.5
  - CORBIN RUSSWIN Access 700® PAC1
  - MEDECO Logic®
  - SARGENT Passport 1000 PG
  - CORBIN RUSSWIN Access 800® AC2

### Applications

- Residence halls
- Private offices
- Storage areas



A



B

C



D



## Wireless Access Control Solutions

### Intelligent WiFi Access Control Solutions

WiFi locks and exit devices provide complete access control in locations where it would be difficult or cost-prohibitive to install a wired lock. With no wires to run, installation time is significantly reduced – simply install the device on the door and configure it to communicate with the wireless network.

- Utilizes IEEE 802.11b/g wireless communication
- Scheduled and user-initiated updates eliminate manual programming
- Real-time door status monitoring and real-time, configurable alarm notification
- Local decision making: 2,400 users supported; 10,000 event transaction history
- Advanced data security with standard encryption techniques
- AES 128-bit encryption and support for most current WiFi network standards
- ANSI/BHMA Grade 1 hardware, offering the highest degree of physical security available in access control locks
- Supports HID® 125 kHz proximity or 13.56 MHz iCLASS® credentials (full authentication, all formats), also available with keypad and/or magnetic stripe
- Integrates with a broad range of industry leading access control systems

### Aperio® Technology



Aperio is a global wireless platform that allows you to expand your access control footprint—quickly, easily, and affordably—using existing platforms you trust.

Available across a broad range of locking hardware from ASSA ABLOY Group brands, Aperio provides the flexibility to address many applications throughout any facility.

- Utilizes IEEE 802.15.4 wireless communication between the lock and an Aperio hub that is connected to the electronic access control system
- Greater security and control with real-time door status monitoring and access control system communication
- Global wireless platform that addresses a wide range of security requirements
- ANSI/BHMA Grade 1 hardware, offering the highest degree of physical security available in access control locks
- Supports HID® 125 kHz proximity or 13.56 MHz iCLASS® credentials (full authentication, all formats)
- Integrates with a broad range of industry leading access control systems

### Products

- D** SARGENT Passport 1000 P2
- CORBIN RUSSWIN Access 700® PW11
- CORBIN RUSSWIN Access 800® W11
- SARGENT Profile Series v.S2

### Applications

- Classrooms
- Record rooms
- Offices
- Residence halls



### Products

- E** ADAMS RITE A100 keyless entry control for aluminum and glass doors
- F** MEDECO M100 eCylinder
- G** HES K100 cabinet lock
- H** SARGENT IN100 locks
- I** HES KS100 server cabinet lock
- J** SECURITRON R100 reader for glass door applications
- K** SARGENT PR100 lock

### Applications

- Common areas
- Tenant spaces
- File storage areas
- Retail
- Healthcare

## Online Access Control



### Integrated Wiegand

Wiegand-enabled locks and strikes combine all standard access control components into a single device. This integrated approach significantly reduces installation time and creates a streamlined aesthetic that blends flawlessly into any environment. Integrated Wiegand products make it easy to incorporate doors and hardware into existing access control systems, because the open architecture platform is compatible with all popular access control systems.

- Open architecture platform offers compatibility with all popular access control systems
- Features integrated monitoring
- Significantly reduces installation time
- Streamlined appearance blends beautifully into any environment
- Requires only one cable run from the lock to the control panel
- Industry standard Wiegand output eliminates need for interface panel
- Proven ANSI/BHMA Grade 1 hardware, offering the highest degree of physical security available in access control locks



### Power over Ethernet (PoE) Access Control Solutions

PoE Access Control Solutions take advantage of the existing Local Area Network (LAN) for both power and data, eliminating the need for any additional power supply or electrical wiring. Utilizing existing IEEE 802.3af (PoE) infrastructure streamlines the installation process, reduces costs, and enables real-time communication.

We offer multiple IEEE 802.3af (PoE) compliant solutions designed to meet your needs – whether you are securing a single building or an entire campus.

- Utilizes IEEE 802.3af PoE-enabled network infrastructure for both power and data
- Provides same real-time communication as traditional access control
- Real-time door status monitoring and alarm notification
- Local decision making : 2,400 users supported; 10,000 event transaction history
- Proven ANSI/BHMA Grade 1 hardware, offering the highest degree of physical security available in access control locks
- Supports HID® 125 kHz proximity or 13.56 MHz iCLASS® credentials (full authentication, all formats), also available with keypad and/or magnetic stripe
- Energy efficiency with a maximum power consumption of 7 watts per lock — 50% less than typical PoE installations
- Integrates with a broad range of industry leading access control systems

### Products

- A** HES integrated electric strike
- B** SARGENT Harmony® Series
- C** SARGENT SE LP10
- ADAMS RITE eForce® 3090P/C
- CORBIN RUSSWIN Access 600® RNE1 access control lock

### Applications

- Exterior doors
- Main entrances
- High security openings

### Products

- CORBIN RUSSWIN Access 800® IP1
- CORBIN RUSSWIN Access 700® PIP1
- SARGENT Profile Series v.S1
- SARGENT Passport 1000 P1

### Applications

- Mission critical openings
- Secondary entrance doors
- Classrooms



**C**





## The Highly Intelligent Opening

The Highly Intelligent Opening represents the apex of the Security Continuum. It consists of ASSA ABLOY solutions working in concert to monitor, record and communicate diagnostic and performance data at the opening. The analysis of this data can be used to optimize management of the opening while enabling services such as asset management, predictive performance modeling, maintenance planning, and sustainability monitoring.

## Seos - Powering Mobile Access

Seos is an ecosystem of interoperable products and services for issuing, delivering and revoking digital keys on NFC mobile devices so that they can be used to open doors to homes, hotels, offices, hospitals, universities, industries and commercial buildings.

### The Highly Intelligent Opening will offer benefits such as:

- *Increased security and system performance*
- *Reduced costs and time for installation services*
- *Reduced costs and time for maintenance services*
- *Enhanced customer service levels*
- *Easier planning and management enabled by access to performance and usage data*

### Products

- *SARGENT SE LP10 Integrated Wiegand lock*
- *SARGENT IN120 WiFi lock*
- *CORBIN RUSSWIN IN120 WiFi lock*
- *CORBIN RUSSWIN Access 700 PIP1 PoE lock*
- *CORBIN RUSSWIN Access 700 PW11 WiFi lock*
- *SARGENT Passport 1000 P1 PoE lock*
- *SARGENT Passport 1000 P2 WiFi lock*

### Applications

- *Commercial offices*
- *Universities*
- *Residential*

## Online Access Control Components

We offer a broad range of access control components that complete the security solution for the full spectrum of standard, perimeter and auxiliary openings. With electromechanical locking solutions that offer protection from light duty to heavy duty and specialty applications that extend to perimeter gates and interior cabinets, ASSA ABLOY covers the entire continuum.

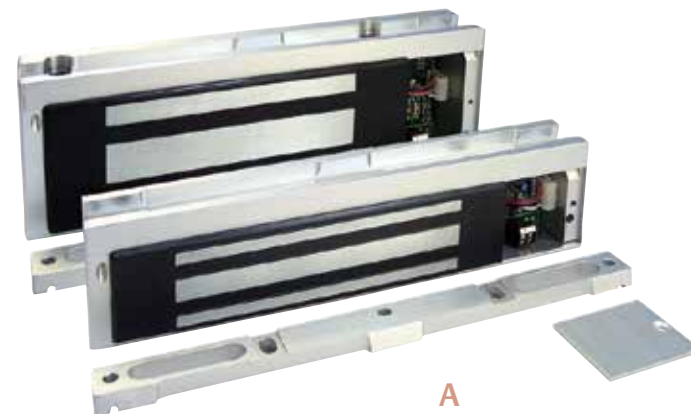
- Security protection up to 4000 lbs holding force
- ANSI/BHMA Grade 1 hardware
- Complements offline or online credential authentication
- Code compliant egress solutions

### Products

- **A** SECURITRON Magnalocks®
  - M380
  - M680
  - M32
  - M62
  - MM15
  - iMXDa
- Electric Strikes
  - HES
  - ADAMS RITE
- Solenoid locks
- Gate locks
- Cabinet locks

### Power Products

- **B** Power Supplies
  - SECURITRON BPS
  - SECURITRON AccuPower®
- Solar Power
  - SECURITRON BPSS
- Power Transfers
  - SECURITRON PowerJump™ ICPT, CEPT, SEPT
- Electrified Hinges
  - SECURITRON EH
  - MCKINNEY eHinges



A



B

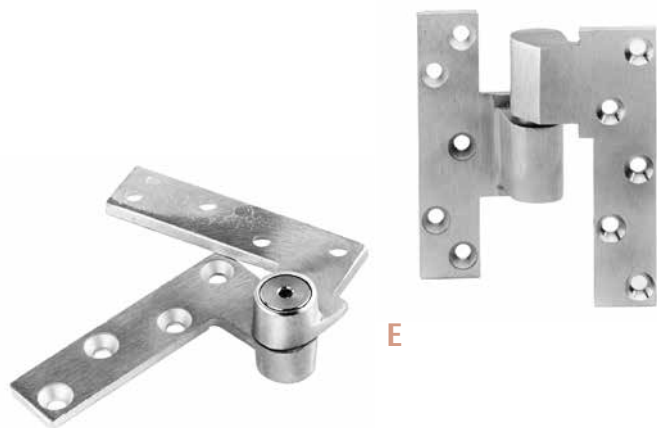


C





D



E



F



G

## Door Control

Controlling the speed that a door closes helps ensure safe passage through the opening while reliable closing facilitates secure latching of the door.

- Surface mounted door closers provide smooth control through opening and closing cycles and are available with multi-size springs and parallel arm options ideal for vandal-prone areas; ADA compliant versions are available
- Concealed door closers mounted overhead or in the floor help to deter tampering and maintain aesthetics
- Closer-holders combine electromechanical door holder functionality with door closer reliability; they are adjustable to virtually any degree of opening, are vandal resistant and available with fire and smoke detectors
- Door operators automatically open and close doors with a lower energy opening force; they are versatile and easy to adjust and can integrate with access control systems
- Overhead stops keep a door from opening too far which protects the condition of the door and frame

## Accessories

Our Group brands provide all door hanging and auxiliary hardware needed to complete an opening. Heavy duty construction, along with vandal-resistant designs, help keep openings safe for years of reliable use. Our accessory offering includes:

- A complete assortment of Grade 1 and 2 hinges for light, medium and heavy duty applications
- Pivots and pivot sets for long lasting performance and reliability which can be used even for extremely heavy doors
- A variety of keypads, card readers, key switches, and push buttons for access control functions
- Architectural door trim including push and pull hardware, specialty trim, flatgoods, protection plates and guards, stops and holders, thresholds, weatherstripping, bolts and latches

## Products

- C RIXSON 27 floor closer
- D CORBIN RUSSWIN DC5000 door closer
- E RIXSON 180 top pivot and M19 intermediate pivot
- F MCKINNEY five knuckle heavy weight hinge
- G PEMKO geared continuous hinge

# Life-Safety



Our most important goal is ensuring the safety of building occupants. Hurricanes, tornados, fires and other dangers, even microbes and volatile organic compounds, can pose life-safety threats. Our group brands help to protect against these hazards with doorways designed and tested to overcome extreme conditions.



# Smilow Cancer Hospital

*New Haven, CT*

The building's calming environment is enhanced by a sense of safety and security. The hospital worked with ASSA ABLOY Door Security Solutions representatives to create a complete door opening package. With frames, doors and hardware from CURRIES, MCKINNEY, RIXSON, ROCKWOOD and SARGENT, Smilow Cancer Hospital fulfilled the design intent of providing patients with a beautiful worry-free environment in which to heal.



# Always Prepared

Codes figure prominently in designing and specifying openings that comply with life-safety and accessibility requirements. ASSA ABLOY field experts help identify and solve code concerns before they become liability issues. Our brands continue to innovate in the field of life-safety, delivering unmatched solutions to keep people safe and offer facility owners peace of mind.

## Windstorm Solutions

### Hurricane-Resistant Assemblies

Products designed for use in hurricane-prone areas are subjected to tests simulating storm conditions, including impact from airborne debris and cyclical pressure loading.

ASSA ABLOY Group brands offer doors, frames and hardware that are third-party certified as complete opening assemblies.

Hurricane-resistant assemblies have been tested and are listed with UL, Intertek and the Florida Building Commission to the following test standards; ASTM E330, ASTM E1996, ASTM E1886, PA 201, PA 202, PA 203, TAS 201, TAS 202 and TAS 203.

### Tornado-Resistant Assemblies

Safe room and shelter products are tested and certified as complete assemblies for protection during high velocity wind storms, such as tornados.

Available up to 8'-0" x 8'-0" pairs

Applications:

- Community shelters
- K-12 school shelters
- Residential "safe" rooms

The StormPro line of tornado-resistant products includes shutter systems. Keep windows secured during tornados using the proven technology designed to protect and secure door openings.

## Tornado and Hurricane Certified Assemblies

- ASSA ABLOY offers complete windstorm solutions including doors, frames and hardware from Group brands:

- CECO DOOR
- CORBIN RUSSWIN
- CURRIES
- MARKAR
- McKINNEY
- PEMKO
- RIXSON
- SARGENT
- YALE

**A** CECO DOOR or CURRIES storm shutter

**B** SARGENT FM8700 Series surface vertical exit device

**C** CECO DOOR or CURRIES StormPro® doors, frames, and window shutters, McKINNEY SP Series hinges, SARGENT FM8700 Series surface vertical exit device and these options:

- CORBIN RUSSWIN FE6800 Series multi-point lock
- SARGENT FM7100 Series multi-point lock
- YALE 7380F multi-point lock





## Bullet and Blast Resistance

CECO DOOR, CURRIES and SMP SPECIALTY DOORS offer a full line of bullet-and blast-resistant metal doors and frames.

Bullet-resistant doors and frames are fabricated with the finest UL listed armor panels that meet or exceed the UL 752 Standard for Bullet-Resistant Materials. All doors and frames are designed to provide the best practical protection for the specified threat level.

For protection of personnel and private property and as required by the Department of Homeland Security, DOD/ATFP requirements, DOE,GSA Level C and D, and petrochemical industry standard (PIPITC), we offer a full line of blast and pressure resistant metal doors and frames. Blast and pressure resistant doors and frames are available to resist force up to 12 PSI. Contact the manufacturer for specifications requiring blast pressures greater than 12 PSI.

### Bullet-Resistant System Features

- Non-ricocheting armor (UL Levels 1-8)
- Welded seamless door edges and frames
- Galvanized doors and frames

### Blast/Pressure Resistant System Features

- Blast and pressure resistant door core
- Welded seamless door edge
- Galvanized doors and frames
- Frames continuously welded

### Products

- D** CECO DOOR and CURRIES bullet-resistant Security SideLight system
- E** YALE 8800 Series mortise lock
- \* SMP SPECIALTY DOORS bullet-resistant doors and frames

### Applications

- Armories
- Safe rooms
- Cashier areas
- Classrooms
- Post offices
- Government facilities
- Airports



## Egress Doors and Hardware

Exit devices or panic hardware facilitate safe and easy egress while maintaining security by restricting access from the outside.

- Exit devices offer heavy-duty yet flexible solutions for the most demanding access and egress control applications; they are both easy to install and retrofit and come with many trim and electrified options such as electric latch retraction, delayed egress, request to exit, electric dogging and alarmed exit
- Exit delay systems help keep occupants safe and may prevent property loss or theft
- Touch sense devices operate with a light skin touch, even through light clothing, making egress easy for persons of all ages and abilities

## Door Closers and Power Operators

Our ADA-compliant electromechanical door closers/holders and power operators ensure safe passage through an opening - helping individuals of all ages, regardless of ability.

NORTON SafeZone is a patent-pending solution with an on-board sensor that detects movement in the "safe zone" of the door opening. When movement is detected, the door is electromechanically held open and released when movement is no longer present.

### Products

- A** SARGENT 80 Series exit device with SARGuide® Electroluminescent option
- B** SECURITRON iMXDA delayed egress Magnalock®
- SECURITRON EMB, TSB, and DSB exit devices
- Adams Rite 3000 and 8000 Series exit devices
- CORBIN RUSSWIN ED4000/5000 exit device and YALE 2100 and 7000 exit devices

### Applications

- Retail
- Schools
- Libraries
- Healthcare
- Daycare

### Products

- C** NORTON 6000 Series power operator
- D** NORTON SafeZone® holder/closer

### Applications

- ADA openings
- Schools
- Healthcare
- Offices



**D**



E



## Antimicrobial Doors, Frames and Hardware

Facility hygiene programs emphasize the cleanliness of high-touch building components such as doors, frames, levers, exit devices, push plates and pull bars. Factory applied antimicrobial finishes and coatings inhibit the growth of microbes on door opening surfaces, contributing to a cleaner facility.

MicroShield® is a silver ion-based material added to door coatings and hardware finishes that successfully inhibits growth of bacteria, mold, mildew, algae and other microbes, making it ideal for use in applications that require enhanced hygiene. There is no visible difference in door openings treated with MicroShield. The coating is permanent under normal wear and tear and the antimicrobial effect cannot be rubbed or washed off, even with harsh chemical cleaners. This proven technology is non-toxic and destroys the organisms in three ways:

- By attacking the cell wall
- Interrupting metabolism
- Preventing reproduction



### Products

- E** CECO DOOR OR CURRIES hollow metal door
- F** SARGENT mortise lock with push/pull trim
- G** SARGENT MS lever

### MicroShield® coating available from:

- CECO DOOR
- CORBIN RUSSWIN
- CURRIES
- McKINNEY
- PEMKO
- ROCKWOOD
- SARGENT
- YALE

F



G



## Behavioral Health Environments

Of the 6,000 hospitals in the United States, about 30% house an in-patient psychiatric or behavioral health unit and almost 8% are dedicated exclusively to behavioral health. While needs may vary widely in this area due to the diversity of services, many requirements are common to all types of facilities, including code compliance.

Behavioral health is concerned with the prevention, diagnosis, treatment and rehabilitation of those who may exhibit aggressive or self-destructive behaviors. One of the main goals is to keep patients safe during recovery or rehabilitation but it is also to ensure the security and safety of others who work in or visit these environments—whether family, clinical and professional staff or environmental services personnel. Our brands offer the most comprehensive selection of products and solutions designed for behavioral health facilities.

- CURRIES and CECO DOOR Patient Room Access Door: Accepted and recommended by the New York State Office of Mental Health (NYOMH); the main door has the functionality of a standard in-swing patient room door; the inner door can open to the corridor, giving authorized personnel quick access to the patient's room
- Hardware is of the utmost importance when creating a safe and secure environment. CORBIN RUSSWIN, MARKAR, McKINNEY, PEMKO, ROCKWOOD and SARGENT all offer products accepted by NYOMH for use in high, medium and low risk areas



## Behavioral Health Checklist

- Doors and frames with hospital stops
- Patient room access doors
- Acoustical openings
- Thermal fused doors
- Lead lined and stainless steel doors and frames
- Electrified mortise locks fail-safe and fail-secure
- Multi-point locks for pairs of doors
- Electric latch retraction exit devices
- Power Supplies
- Electromagnetic locks
- Wireless cabinet locks
- Locking pulls
- Behavioral health trim or paddle trim
- Vertical rod exit devices
- Continuous, swing clear and double swing hinges
- Rescue hardware
- Pivots
- Pulls
- Emergency release stops
- Concealed overhead holders
- Electromagnetic holders
- Armor/kick/mop plates and edges
- Security SideLight Interior
- Aluminum doors and frames

## Products

- A** HES K100 cabinet lock with Aperio® technology
- B** CECO DOOR and CURRIES Behavioral health patient room access door
- C** CORBIN RUSSWIN BHSS trim
- D** ADAMS RITE The RITE Door® with integrated concealed vertical rod exit device and full surface raised barrel hinge




D



21 Definitive Observation Hemodialysis

20 Hemodialysis Unit

# Sustainable Building Solutions

The background image shows a modern building interior. The most prominent feature is a large, white, lattice-like ceiling structure composed of many thin, white beams arranged in a grid pattern. The lighting is a mix of cool blue and warm white, creating a high-tech, futuristic atmosphere. The perspective is looking upwards, emphasizing the height and complexity of the ceiling.

Projections indicate that soon, 50% of all nonresidential construction will be designed to a green standard. As the built environment strives toward higher levels of sustainability, with special attention being paid to energy efficiency and human health impacts, we see high performance door opening solutions playing a larger supporting role in the overall sustainability of green buildings.



## The Cooper Union

*New York City*

The first LEED Platinum-certified education facility in New York City achieved a blend of security, life-safety, aesthetics and sustainability with a mix of door and hardware products from ASSA ABLOY Group brands: CURRIES, McKINNEY and SARGENT. All of the doorway products are constructed with high percentages of recycled content and when used as a complete opening, can help improve building envelope thermal performance. Additionally, doors certified to GREENGUARD Gold assist with indoor environmental quality. The 175,000-square-foot facility is 40 percent more energy efficient than a standard building of its type.



# The Demand for Sustainable Solutions

Our opening solutions have always provided for security, life-safety and the convenience of building occupants, but in the past decade special consideration has been paid to the sustainability of our products and how they can assist building designers. The demand for our products that meet this need is significant and is tied to the rise of green building rating systems like LEED and the Living Building Challenge. These voluntary green building systems are now becoming part of code through the IGCC and Net Zero Energy Building initiatives passed by states and the federal government.

Through our ongoing voice-of-the-customer process, we intend to put even more emphasis on our customers' sustainability needs.

ASSA ABLOY Group brands can assist green buildings in the categories of energy efficiency, sustainably sourced materials, indoor environmental quality as well as innovation and design considerations.



## Sustainability integrated in each part of the value chain

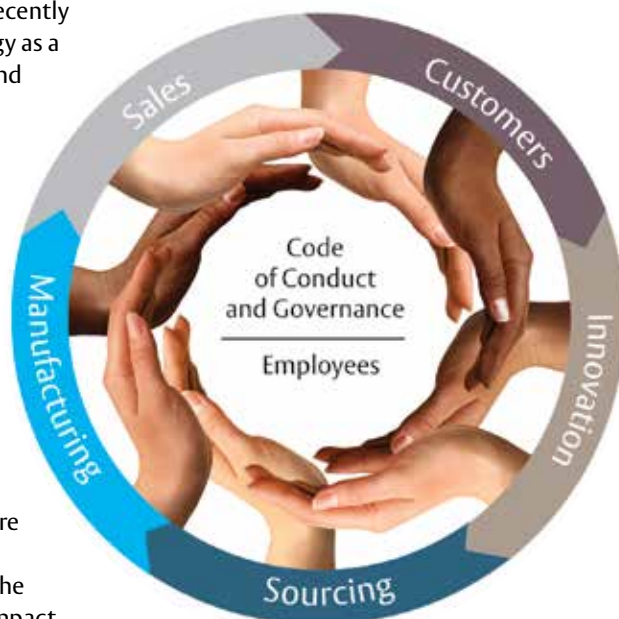
**Customers:** ASSA ABLOY's ambition is to supply high-quality products that fulfill customer requirements, have a long life and are manufactured with minimal use of resources and environmental impact during their life cycle.

**Innovation:** New products are evaluated from a life cycle perspective. Many recently developed products save energy as a result of improved insulation and intelligent control of various door-opening solutions.

**Sourcing:** The Group's suppliers in risk areas are evaluated from a sustainability perspective. Suppliers failing to comply with the Group's requirements are encouraged to make improvements or will otherwise be phased out.

**Manufacturing:** Manufacture of the Group's products should be carried out safely and with the least possible environmental impact. Hazardous processes are gradually being phased out and replaced by eco-friendly alternatives.

**Sales:** ASSA ABLOY respects laws and regulations concerning business ethics in the countries in which it operates and requires all partners to act in the same way.





## Our Memberships

### ASSA ABLOY and the U.S. Green Building Council

In furthering our commitment to sustainable construction, ASSA ABLOY is proud to be a member of the United States Green Building Council (USGBC).



### Green building organizations

Below are some examples of memberships that various companies in the ASSA ABLOY Group hold. The common denominator among these organizations is the objective to develop a more sustainable construction industry and bolster the supply of sustainable real estate.



CARBON DISCLOSURE PROJECT



## The Sustainability Continuum for Green Buildings

As the built environment strives to be as energy efficient and green as possible, high performance commercial doors and hardware play a larger supporting role.



## Sustainable Door Opening Solutions

Our brands deliver everything required to build high performance exterior and interior door solutions for today's green buildings. Our Architectural Opening Consultants can help specify best-in-class exterior openings that deliver tested thermal transmission and air leakage requirements to meet the most stringent LEED, ASHRAE or other code requirements. Additionally, we offer door opening solutions that deliver tested Sound Transmission Class (STC) ratings from 27–55 and beyond.

This level of energy, air leakage and STC performance requires integrated product solutions that specify: frames, gasketing, door bottoms, thresholds, doors, closers and hardware.

## Energy Efficiency

### Insulated Doors

- Door cores filled with highly insulated polyurethane foam
- Polyurethane core doors help maximize energy efficiency
- Improves the building envelope thermal performance and lowers the U-factor designation, indicating more effective insulating materials

### Thermal Break Frames

- Integrated weatherstripping material prevents heat and cold transfer
- Insulating material delivers maximum protection against thermal transfer
- Lessens heat transfer and prevents condensation or frost from forming on the interior portion of the frame
- Thermally broken frames tested with insulated doors provide the highest performing energy efficient door openings available on the market

### Kerf Frames

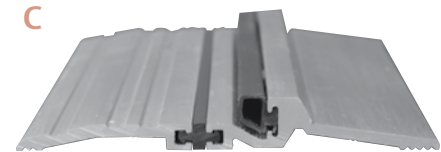
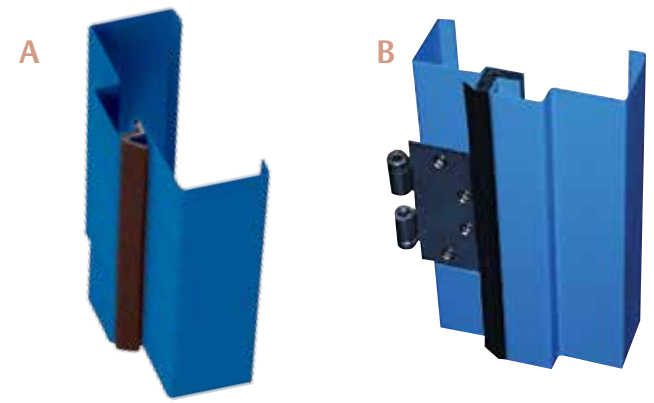
- Provides draft control at the frame; includes weatherstripping in groove, or kerf, along the frame
- Convenient, no additional fasteners needed, unaffected by paint or light
- Fire rated
- Tested to 1,000,000 cycles

### Gasketing (Weatherstripping)

- Prevents air from seeping through necessary gaps or seams in the opening
- Made from flexible materials that do not impede operation of the door; various grades available to meet weather conditions of different climate zones
- Completes the package of a truly effective barrier against energy loss

### Door Closers

- Prevents excessive heat loss by making sure doorways close and latch properly
- Differences between inside and outside air pressure can impede the door closing cycle; properly sized closers overcome this pressure without requiring excessive opening force
- BHMA Grade 1 hardware





## Electronic Access Control

As building designers strive toward net-zero energy goals, every aspect of a building's plug load becomes crucial. When evaluating electronic access control systems, it is important to understand the energy usage differences between products.

One of the greatest efficiencies can be found with the use of IP-based access control solutions, which reuse existing WiFi or Power over Ethernet (PoE) equipment. This reduces or eliminates the need for security infrastructure, lessening both power requirements and materials used. PoE security cameras and telephones have already gained wide acceptance in the security industry.

- Integrated PoE locks combine all access control functionality into the lock and use existing network cabling for both power and data; this offers the lowest power consumption with a maximum of 7 watts per lock — 50% less than typical PoE installations
- WiFi access control solutions leverage current 802.11 WiFi infrastructure, offer the same reduction of components as PoE, and optimize power consumption for long battery life
- Door Opening Solutions from ASSA ABLOY Group brands are pre-wired with ElectroLynx® connectors making adding or upgrading electrified openings easy

## Products

- A** Kerf frame available from CECO DOOR, CURRIES, and SMP SPECIALTY DOORS
- B** Thermal Break frame available from CECO DOOR, CURRIES, and SMP SPECIALTY DOORS
- C** PEMKO thermal break threshold
- D** Trio-E insulated, steel stiffened door from CECO DOOR, CURRIES, and SMP SPECIALTY DOORS
- E** NORTON 7500 Door Closer with PVC Free closer cover
- F** Power over Ethernet lock available from CORBIN RUSSWIN and SARGENT



## Sound Transmission Control

Our brands offer assemblies with a wide range of sound ratings for diverse and demanding environmental conditions. Acoustical openings are:

- An economical and durable noise reduction solution
- Available in wood, hollow metal and stainless steel
- Provided with all appropriate seals and thresholds

Acoustic solutions are designed and available with STC ratings 46+ for wood door openings and 55+ for hollow metal openings.

Door Opening Solutions from ASSA ABLOY Group brands can help green building designers provide building occupants with an indoor environment free of intrusive or disruptive levels of sound.

## Products

- G** Sound rated doors available from CECO DOOR, CURRIES, GRAHAM, MAIMAN and SMP SPECIALTY DOORS
- Tested with PEMKO acoustic accessories
- H** PEMKO acoustic thresholds
- I** PEMKO automatic door bottom
- J** PEMKO acoustic frame/gasketing



## Health Impact of Building Products

Health impact and indoor environmental quality of building products has risen in importance in green building rating systems.

Door opening solutions from ASSA ABLOY Group brands can assist with:

- Low-emitting materials
- Indoor chemical, tobacco and pollutant source control
- Daylight and views
- Acoustic environment
- Avoid VOCs from painting on site by ordering prefinished doors and frames from CECO DOOR and CURRIES

Today we see carpets, ceiling tiles, office furniture and paints tested for volatile organic compounds (VOCs) – should door opening solutions be any different?

As a leader in sustainability, we have tested our brands ADAMS RITE, CECO DOOR, CURRIES, FLEMING, GRAHAM, MAIMAN, and SMP SPECIALTY DOORS to GREENGUARD and GREENGUARD GOLD standards. This stringent testing protocol ensures that product meets VOC off-gassing testing requirements and is available at no additional cost.

As a further indication of our commitment to healthy products and materials, ASSA ABLOY Americas is a member of the Health Product Declaration Collaborative (HPDC), a customer-led organization for companies and individuals committed to the continuous improvement of the building industry's environmental and health performance, through transparency and innovation in the building product supply chain.

## Materials and Resources Make a Difference

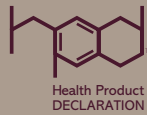
Designers and specifiers employing the following strategies help building owners maximize LEED credit contribution for security doors, frames and hardware, including electronic access control (EAC) products. A major area impacting the sustainability of our product offering is the materials and resources selection. Recycled content in doors, hardware and access control products varies from 30% to 95% and can assist designers in obtaining points in this area. LEED also gives preference to regionally sourced materials, but due to the number of component assemblies in most security products, this is a difficult credit for security system components. Additionally, there is a LEED credit for the use of rapidly renewable bio-based materials. Agrifiber core doors and bamboo veneers can assist in obtaining this credit. Wood door selections that are Forest Stewardship Council certified can also contribute to LEED credits.

### Products

**A** MAIMAN Stile and Rail Door with SARGENT Harmony Series Integrated Wiegand lock

### Applications

- Armories
- Safe rooms
- Cashier areas
- Classrooms
- Post offices
- Government facilities
- Airports



### Products

**B** GRAHAM Sketch face door with rapidly renewable agrifiber core and FSC certification, MAIMAN frame, McKINNEY hinges, Roseless trim by CORBIN RUSSWIN and SARGENT





## Trio-E Battles the Elements at Wolf Ridge Environmental Learning Center

The Wolf Ridge Environmental Learning Center in Finland, Minnesota experiences extreme climate variations that range from a low temperature of -50°F in the dead of winter to over 100°F in the summer. With these temperature extremes comes a need for energy efficient thermal building components to lessen heating and cooling loss through facility openings. Wolf Ridge increased the performance of its exterior doorways with Trio-E openings that feature products from ASSA ABLOY Group brands CECO DOOR, CURRIES, MCKINNEY, NORTON, PEMKO, ROCKWOOD and SMP SPECIALTY DOORS.

A Trio-E opening consists of a thermal break frame, insulated steel door, gasketing, threshold, hinges and door closer that work together to achieve an operable U Factor of 0.29 which is 50% better than other steel stiffened doors currently available on the market. The science center opening alone showed an annual kBtu reduction of 1,792 in leakage and conductive loss according to an independent audit by Conservation Technologies, using before and after blower tests and imaging, providing a significant reduction in heating costs and carbon emissions.

Buildings account for roughly 40% of global energy consumption. By using ASSA ABLOY's energy efficient openings, a large positive impact can be made in energy demand. For a 300 door building complex retrofit, Trio-E energy efficient openings deliver \$20K in annual energy savings and provide a reduction of 142 tons of CO<sub>2</sub>, the equivalent to removing 30 vehicles from the road!

| Savings  | kBtu    | kWh |
|--|---------|-----|
| Annual energy savings from reduced air leakage                             | 558     | 164 |
| Annual energy savings from reduced conductive losses                       | 1,234   | 362 |
| Total annual energy savings  | 1,792   | 526 |
| Estimated Annual CO <sub>2</sub> Emission Reductions Due to Energy Savings | 947 lbs | -   |

**For a 300 door building complex retrofit, Trio-E energy efficient openings deliver:**

**\$20K** in annual energy savings

**142 tons** annual CO<sub>2</sub> reduction, the equivalent to removing 30 vehicles from the road!

# Decorative Openings

Doors and door hardware may be the most intimate points of contact we have with a building. We're affected by the way a door looks and, the way the lever or pull on that door feels. So while the first job of doors and hardware is to make what's behind them safe and secure, their aesthetics – their contribution to the dominant attitude of a space and the human experience – matter, too. ASSA ABLOY Group brands provide beautiful doors, frames and hardware that will inspire you and invigorate your interiors. Visit our Good Design Studio to see our entire collection.

[www.thegooddesignstudio.com](http://www.thegooddesignstudio.com)



## The Fairmont Hotel

*Pittsburgh, PA*

This beautiful LEED Gold hotel features doors and hardware from ASSA ABLOY Group brands: ADAMS RITE, CECO DOOR, GRAHAM, HES, MCKINNEY, NORTON, PEMKO, RIXSON, ROCKWOOD and SARGENT. Five hundred of the roughly 800 openings feature the eco-friendly and stylish GRAHAM Sketch Door™. By mixing and matching different wood species and grain directions, Sketch Doors provide high-end visual appeal at an affordable price. The architects of the Fairmont Pittsburgh chose a Rift Oak custom design featuring a Walnut inlay and dark custom color finish for openings throughout the building.



A



# ASSA ABLOY: Your Resource for Total Decorative Opening Solutions

It's not easy to define Good Design, but one thing Good Design is *not*, is random. Good Design is deliberate, well-conceived, without compromise. Total Decorative Opening Solutions from ASSA ABLOY Group brands are safe, secure, sustainable, and beautiful. No compromises. Visit our Good Design Studio at [www.thegooddesignstudio.com](http://www.thegooddesignstudio.com) to learn more.

## Decorative Doors and Frames

Doors and frames keep us safe, provide for way-finding, and insulate us from sound, heat, and cold. They can do all of these things, *and* be expressive of, and consistent with, the overriding design intent of a building's interior.

Whether in wood from GRAHAM or MAIMAN; in aluminum from FRAMEWORKS; in stainless steel or hollow metal from CECO DOOR, CURRIES, SECURITY METAL PRODUCTS, or ADAMS RITE; or, in high-pressure decorative laminate from GRAHAM, ASSA ABLOY Group brand doors and frames will meet the life-safety, security, sustainability, energy efficiency, acoustic *and* aesthetic requirements for any interior space.

## Coordinated Hardware: Locks, Trim and Accessories

ASSA ABLOY's hardware manufacturers work collaboratively to create aesthetically suited collections of coordinating door levers, pulls, coat hooks, door stops, hinges, thumb turns and accessories that complement our decorative doors, and create distinctive door opening solutions.

Door openings can be safe, secure and beautiful with the superbly styled decorative door levers, roses, escutcheons and thumb turns, offered in a broad array of architectural finishes, on commercial-grade mortise locks, tubular locks, electro-mechanical locks, access-control and exit devices, and master key systems manufactured by SARGENT and CORBIN RUSSWIN. Select a decorative lever and use it on every door within a building, regardless of the door's function.

Beautiful door pulls, cabinet pulls, coat hooks and door stops by ROCKWOOD MANUFACTURING, and decorative hinges by MCKINNEY, coordinate with the door levers offered by SARGENT and CORBIN RUSSWIN to complete any door opening.

### Products

- A MAIMAN single-panel Stile and Rail door with SARGENT mortise lock and decorative lever, and MCKINNEY hinges
- B Decorative Hardware Collection: Door pulls, stops and coat hooks by ROCKWOOD; levers, roses and thumb turns by SARGENT and CORBIN RUSSWIN; hinges by MCKINNEY
- C GRAHAM Custom Sketch Door™ with ROCKWOOD architectural pull and MAIMAN wood frame, casing and wood valance (Side wall sliding door track hardware available through PEMKO)



B



C

## Hollow Metal Doors and Frames

Durable and attractive hollow metal doors and frames offered by CECO DOOR, CURRIES and SMP SPECIALTY DOORS are available in a variety of sizes, gauges and aesthetic profiles, with a range of core types. They are available with fire-, bullet-, and blast-resistant ratings and with hurricane and tornado certifications, and have one of the highest recycled steel usage rates in the industry. Elegant doors with high-definition embossed wood grain patterns and panel profiles can be manufactured with continuously-welded, seamless edges. Doors with factory-installed glazing can be paired with kerf frames to achieve 49 Sound Transmission Class (STC) ratings, and industry-leading operable energy efficiency ratings.

## Integrated Door and Hardware Assemblies

The versatile, durable, and aesthetically appealing RITE Door® by ADAMS RITE is a hollow metal door with a low-profile, integrated (pre-installed) exit device. The door can be primed, pre-finished to match existing paints, or faced with decorative high-pressure or metallic laminates. The RITE Door® is 3-hour fire-rated, available with glass lites, and is top-latching, which eliminates the need for astragals in cross corridor and elevator lobby applications. The low-profile push bar is available in an attractive range of architectural finishes.

## Aluminum Doors, Frames and Windows

FRAMEWORKS offers expertly-engineered, aluminum swinging and sliding doors, frames, and clerestory, sidelight, or transom window solutions for interior applications. FRAMEWORKS door, frame and window products are designed with snap-on trim, recessed glazing pockets and concealed fasteners. Project components are angled, segmented and radiused to any specification, and are individually packaged by opening to streamline installation. FRAMEWORKS solutions are available with a variety of glazing options and with anodized and electro-statically-applied standard or custom-matched paint finishes.

## Stainless Steel Doors and Frames

Stainless steel doors and frames from CECO DOOR, CURRIES and SECURITY METAL PRODUCTS are appropriate for a wide range of applications, from highly corrosive and clean room environments, to aesthetically appealing entrance lobbies. Stainless steel doors and frames have incomparably clean lines, and are extremely versatile. Doors are offered with a variety of core types and can be manufactured with vision lites and louvers. Blast- and ballistic-rated doors and frames can be designed to meet the most demanding site-hardening objectives.

### Products

**A** *Stainless steel door and frame from SMP SPECIALTY DOORS, CECO DOOR and CURRIES. Shown with SARGENT Harmony access control device and decorative lever*

### Applications

- Hospitals
- Food processing plants
- Laboratories
- Highly corrosive areas
- Private offices
- Storage areas
- Universities
- Hotels

### Products

**B** *FRAMEWORKS aluminum sliding door, frame and window system with ROCKWOOD pull*

### Applications

- Hospitals
- Banks
- Universities
- Private offices
- Assisted living
- Hotels
- Schools

### Products

**C** *ADAMS RITE the RITE Door® with integrated concealed vertical rod exit device*

### Applications

- Cross corridor
- Elevator lobbies
- Residence halls
- Private offices
- Storage areas
- Assisted living
- Hotels
- Hospitals
- Universities
- Schools





A



## Wood Stile and Rail Doors

Elegance, quality and craftsmanship best describe MAIMAN wood stile and rail doors. Available in a variety of lites, louvers and sticking patterns, MAIMAN's stile and rail doors are fire-rated (20/45/60/90 minutes), pre-finished, and can be grain- and color-matched for compatibility. MAIMAN's doors are GREENGUARD® certified and their structurally engineered cores are SCS certified for recycled content.

## Flush Wood Doors

GRAHAM's beautiful architectural flush wood doors are crafted in veneers to exacting fit and finish tolerances. The doors can be available pre-finished, in 28 standard stains or painted in any pantone color. Custom color-matching is available. GRAHAM's wood doors can be manufactured with applied mouldings, with lites and louvers, with transoms. They are available with agrifiber, NAUF, lead-lined, STC (up to 46) and fire-rated (up to 90 minutes) cores. GRAHAM wood doors are FSC and GREENGUARD® certified and can be produced with rapidly renewable veneers.

## Sketch Doors™

GRAHAM's Sketch Doors™ are architectural flush wood doors with immense visual appeal. They are created by arranging wood veneers in flush, decorative patterns. Choose from three standard Sketch Face™ designs, or create a custom design. Sketch Doors™ are available pre-finished in 28 standard stains, with agrifiber, NAUF, lead-lined, STC (up to 46) and fire-rated (up to 90 minutes) cores. Sketch Doors™ are FSC and GREENGUARD® certified and can be produced with rapidly renewable veneers.

## Thermal Fused (LPDL) Doors

MAIMAN Thermal Fused doors combine the exceptional durability of low-pressure laminate, with the look and aesthetic appeal of a flush wood door. This attractive door is available in 28 standard faces, is edge-banded on all four sides, and is guaranteed not to delaminate. Lites and louvers are optional. Thermal Fused doors are FSC and GREENGUARD® certified and available with 42 lb. density industrial particle, NAUF and fire-rated (up to 90-minute) cores with STC ratings of between 32 and 46.

## High Pressure Decorative Laminate (HPDL) Doors

GRAHAM 5-ply, HPDL doors are consistently beautiful and dependable, and can be constructed with Wilsonart®, Formica®, Pionite® and Nevamar® face laminates and painted or stained vertical edge bands. The doors have a lifetime warranty, and are available with agrifiber, NAUF, STC (up to 46) and fire-rated (up to 90 minutes) cores, and are FSC and GREENGUARD® certified.

## Wood Frames and Jamb

MAIMAN offers a complete line of non-rated 20-minute, or fire-rated 45/60/90-minute wood frames and jamb.

### Products

**A** MAIMAN multi-panel Stile and Rail door with CORBIN RUSSWIN mortise lock and decorative lever

### Applications

- Universities
- Private offices
- Assisted living
- Hotels
- Schools
- Multi-family

### Products

**B** MAIMAN Thermal Fused door with SARGENT tubular lock and decorative lever

### Applications

- Hospitals
- Assisted living
- Residence halls
- Hotels
- Multi-family
- Universities
- Schools

### Products

**C** MAIMAN fire-rated wood jamb

### Applications

- Cross corridor
- Elevator lobbies
- Residence halls
- Private offices
- Storage areas
- Assisted living
- Hotels
- Hospitals
- Universities
- Schools



## Decorative Levers, Roses, Escutcheons, Thumb Turns, Cylinder Collars

Sleek and unique are two words that describe the commercial-grade decorative hardware offered by CORBIN RUSSWIN and SARGENT. Beautiful decorative door levers are available in 13 architectural finishes and are compatible with CORBIN RUSSWIN and SARGENT mortise and tubular locks, access control and exit devices, and master key systems. Select a decorative lever and use it on every door within a building, regardless of the door's function. Complete the trim detail with complementary roses or escutcheons, thumb turns and cylinder collars.

## Roseless Trim

Exclusive to CORBIN RUSSWIN and SARGENT is the uniquely minimal, Roseless Trim. This elegant, commercial-grade trim minimizes the appearance of hardware on a door. Hardware meets door in a flawless aesthetic. Roseless Trim is available in 13 architectural finishes on CORBIN RUSSWIN and SARGENT mortise and tubular locks, and on select access control devices.

## Decorative Accessories: Hinges, Pulls, Stops, Hooks

Distinctive, discriminately chosen accessories elevate ordinary door openings, to extraordinary door openings. They define Good Design. Begin with the door. Select the locking device and decorative lever or trim. But don't forget the complementary accessories: stunning architectural door pulls with matching coat hooks and door stops from ROCKWOOD; decorative hinges from McKINNEY; coordinated hardware for every door opening.

### Products

**A** CORBIN RUSSWIN and SARGENT Roseless trim

### Applications

- Private offices
- Hotels
- Universities
- Multi-family
- Assisted living
- Hospitals

### Products

**B** ROCKWOOD Locking Pull integrates a contemporary postmount style door pull with a deadbolt locking system for both beauty and security. Shown on GRAHAM Sketch Door™

### Applications

- Private offices
- Hotels
- Universities
- Assisted living
- Hospitals
- Retail
- Libraries

### Products

**C** Decorative hardware suite offered by CORBIN RUSSWIN, McKINNEY, ROCKWOOD, SARGENT

### Applications

- Multi-family
- Private offices
- Hotels
- Universities
- Schools
- Assisted living
- Hospitals
- Retail
- Libraries





## Suited Decorative Hardware Collections

Suited Decorative Hardware Collections from the ASSA ABLOY Group brands elevate ordinary door openings, to extraordinary door openings. Visit The Good Design Studio to see our entire collection. [www.thegooddesignstudio.com](http://www.thegooddesignstudio.com).



# Services & Training

Doorways at times can seem complicated. With many options for form and function, new technologies, building codes and rating systems, you need a strategic partner who can help sort out the details. Our product, technical and architectural experts are committed to providing programs that help keep you informed and our teams are always available to listen to your unique requirements and develop a customized opening solution.





## Innovation Showroom

*New Haven, CT*

The Innovation Experience is a term we use to describe the comprehensive and interactive product exhibits on display in our Innovation Showroom located in New Haven, CT, in Phoenix, AZ and within our multi-vehicle Mobile Innovation Fleet. Customers can request a visit to our U.S. headquarters to tour the showroom or can attend one of the many mobile events hosted by our local distributors and sales teams across the country. The showrooms feature the latest doorway products and technologies driving the openings industry and stops are often paired with educational course offerings.

# Premium Education & Support

We take pride in being door opening experts. Our team members have the broadest range of professional credentials in the industry from PSP to AHC, CDT, CSI, LEED GA and AP, among others. Our vertical market specialists are focused on addressing issues unique to specific types of facilities and work with our specification consultants to develop complete building specifications. We continually share our product and industry knowledge through diverse educational programs for end-users, architects, distributors and integrators and our nationally dispersed sales organization provides comprehensive local support.

## ASSA ABLOY Americas University

ASSA ABLOY Americas University courses are available to anyone interested in learning about doors, hardware and access control. The University provides an assortment of courses in varying formats from online modules to in-person trainings and a monthly webinar series. Topics covered are from basic doors and hardware to the most complex IP enabled access control solutions.

For more information about ASSA ABLOY Americas University courses, visit [www.assaabloyamericasuniversity.com](http://www.assaabloyamericasuniversity.com)

## Continuing Education

As an approved provider of AIA/CES, GBCI/CMP and IDCEC continuing education programs, we offer architects, specifiers, engineers, contractors, building material suppliers and designers a full spectrum of quality educational programs.

Subjects covered in more than 40 structured courses include: industry trends, security, electronics, safety, construction documents, aesthetic openings and LEED. Courses may be presented as chapter programs or in individual offices. A sampling of the course offering includes:

- LEED for High Performance Doors and Hardware
- Integrated Door Opening Assemblies
- Aesthetically Designed Architectural Door Openings
- Architectural Hardware for Fire Rated Door Openings
- Unlocking the Mystery of Doors, Hardware and Codes



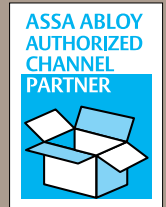


## Channel Partner and Integrator Programs

As new technologies emerge, training and collaboration becomes increasingly important. We offer the following certification programs to equip our partners with the knowledge and support needed to sell and install our access control products.

### Authorized Channel Partner Program (ACP)

Open to distributors, wholesalers and other channel partners who provide our access control products to certified integrators. The program features onsite training with practical exercises to solidify an understanding of product technologies, features, applications and model structure. Partners may be certified to cover one or all technology categories; Integrated Wiegand, IP Enabled or Aperio products.



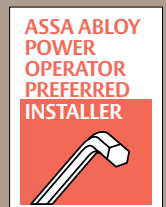
### Certified Integrator Program (CI)

Designed for knowledgeable and experienced security systems integrators. Hands-on training familiarizes students with product features and applications and provides valuable experience installing, commissioning, and troubleshooting the products in a real-world environment. Integrators may be certified to cover one or all technology categories; Integrated Wiegand, IP Enabled or Aperio products.



### Power Operator Preferred Installer (POPI)

Open to anyone who installs our low energy operators. Training includes proper installation and product configuration, practices to ensure smooth operation and performance as well as troubleshooting and repair.



## Sales & Technical Support

With our strategically located sales offices, teams of specialists provide a full spectrum of services to help ensure you select the correct opening for any application.

### Specification Consultants

Aside from providing a wealth of continuing education opportunities, our specification consultants can provide or assist in the development of a complete building specification, prepare door and hardware schedules and consult on compliance with building codes and rating systems.

### Vertical Market Specialization

Focus is important. Local teams of vertical market specialists are dedicated to serving the needs of an assigned market from government and military to healthcare, K-12, and university and our national accounts team specializes in both retail and hospitality. By honing in on each market segment, we are able to develop market-specific new products and customize solutions based upon unique needs.

### Integrated Solutions Specialists

Our Integrated Solutions Specialists are all certified by ASIS International as Physical Security Professionals (PSP). They can perform security audits, consultations and training on electronic access control integration.

### Certified Key Systems Specialists

Highly trained and certified Key Systems Specialists are available nationwide to design or assist in the development of secure factory-masterkeyed systems.

## Distributors and Service Centers

Facilitating the effort to bring products and services closer to local jobsites is our network of distributor partners and service centers. They bridge the gap between manufacturers and customers to ensure complete opening solutions and services.

### Distributor Partners

Our large nationwide network of distribution partners are well-versed in our product offering and provide many value-added services including: product training, custom modifications, scheduling and order coordination, inventoried products, installation, maintenance and repair assistance.

### Regional Service Centers

Our coast-to-coast network of six strategically located Service Centers brings top quality doors and frames closer to distributors and local job sites. These modern, fully-equipped facilities represent the largest and most responsive delivery system in the industry.





Grand Central Station, NYC

## Bringing it all Together

From Springfield, IL to Milan, TN to New Haven, CT and Garland, TX, our manufacturing strength lies within our ability to combine products from trusted door and hardware brands to create optimized openings.

### ADAMS RITE

Integrated door assemblies, mechanical and electromechanical locking systems, electric strikes, and exit devices

### BARON

Custom and standard steel doors and frames

### CECO DOOR

Custom and standard steel doors and frames

### CORBIN RUSSWIN

Mortise, bored and auxiliary locks, exit devices, door closers, key systems, electromechanical and access control products

### CURRIES

Custom and standard steel doors and frames

### FRAMEWORKS

Pre-finished interior aluminum frames, windows and doors

### GRAHAM

Architectural flush wood doors

### HES

Electric strikes, cabinet locks, locking devices and security accessories

### MAIMAN

Fine architectural wood doors and frames

### MARKAR

Complete range of continuous hinges

### McKINNEY

Standard, electric, decorative, specialty and custom hinges

### MEDECO

Locks and locking systems for security, safety and control

### NORTON

Mechanical and electromechanical door closers and low energy door operators

### PEMKO

Thresholds, gasketing products, continuous geared hinges, lites, louvers and accessories

### RIXSON

Concealed closers, pivots and mechanical/ electromechanical door holders

### ROCKWOOD

Architectural door pulls, door stops and holders, bolts and latches, specialty door trim

### SARGENT

Mortise, bored and auxiliary locks, exit devices, door closers, key systems, electromechanical and access control products

### SECURITRON

Electromagnetic locks, power supplies, keypads, egress systems, and push buttons; MagnaCare® lifetime warranty

### SMP SPECIALTY DOORS

Sound rated acoustical, stainless steel, bullet and blast resistant, watertight doors and frames

### YALE

Mortise, cylindrical and auxiliary locks, exit devices, door closers, electromechanical products and key systems

We are where you are. Connect with us online:

[www.assaabloydss.com](http://www.assaabloydss.com)









ASSA ABLOY is the global leader in door opening solutions, dedicated to satisfying end-user needs for security, safety and convenience.

**ASSA ABLOY**

[www.assaabloydss.com](http://www.assaabloydss.com)

ASSA ABLOY Door Security Solutions  
110 Sargent Drive  
New Haven, CT 06511  
(800) DSS-EZ4U (377-3948)

Copyright © 2013, ASSA ABLOY Door Security Solutions, an ASSA ABLOY Group company.  
All rights reserved. Reproduction in whole or in part without the express written permission of ASSA ABLOY Door Security Solutions is prohibited.

*Effective 8/1/2013*  
2300-1271