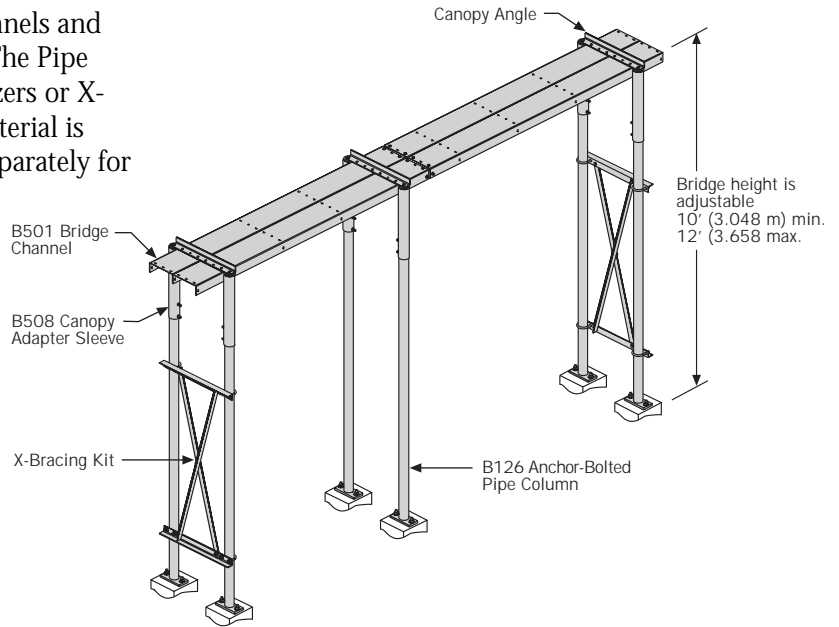


Transmission Line Bridge Kits

Transmission Line Bridge Kits come in widths of 1' (305 mm) to 3' (914 mm) and lengths of 10' (3.048 m) to 30' (9.144 m). When ordering kits you may choose from either the Direct-Burial or Anchor-Bolt style pipe columns or the B2230 Bridge Kit designed to work with our 900 series Towers. Each kit includes the steel and hardware for a complete bridge system. The Bridge Channels and Splices are formed of 11-gauge (3 mm) steel. The Pipe Columns are 3-1/2" (89 mm) OD pipe. Stabilizers or X-Brace Kits are included where required. All material is galvanized. All components may be ordered separately for custom applications.



Direct-Burial Pipe Column Kit

Consists of:

Bridge Product Number	Size (mm x m)	B501 Bridge Channel	B130 Pipe Column	B509 Pipe Head	B508 Canopy Adapter Sleeve	Canopy Angle (qty)	B503 Straight & Hinge Splice	Stabilizer/X-Bracing Kit (qty)
B2212	1' x 10' (305 x 3.048)	1	2	2	—	—	—	—
B2213	1' x 20' (305 x 6.096)	2	3	3	—	—	1	B593 (2)
B2214	1' x 30' (305 x 9.144)	3	4	4	—	—	2	B593 (2)
B2215	2' x 10' (610 x 3.048)	2	4	—	4	B1117 (2)	—	—
B2216	2' x 20' (610 x 6.096)	4	6	—	6	B1117 (3)	2	B1468 (2)
B2217	2' x 30' (610 x 9.144)	6	8	—	8	B1117 (4)	4	B1468 (2)
B2218	3' x 10' (914 x 3.048)	3	4	—	4	B514 (2)	—	—
B2219	3' x 20' (914 x 6.096)	6	6	—	6	B514 (3)	3	B1469 (2)
B2220	3' x 30' (914 x 9.144)	9	8	—	8	B514 (4)	6	B1469 (2)
B2230 *	2' x 10' (610 x 3.048)	—	—	—	—	—	—	—

* This kit is to be used with Valmont Microflect's 900 Series Tower

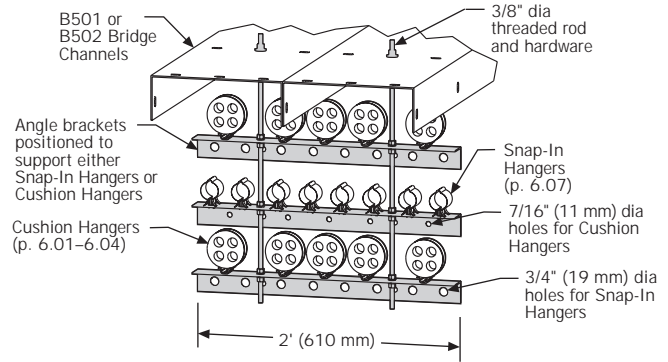
Anchor-Bolted Pipe Column Kit

Consists of:

Bridge Product Number	Size (mm x m)	B501 Bridge Channel	B126 Pipe Column	B509 Pipe Head	B508 Canopy Adapter Sleeve	Canopy Angle (qty)	B503 Straight & Hinge Splice	Stabilizer/X-Bracing Kit (qty)
B2221	1' x 10' (305 x 3.048)	1	2	2	—	—	—	—
B2222	1' x 20' (305 x 6.096)	2	3	3	—	—	1	B593 (2)
B2223	1' x 30' (305 x 9.144)	3	4	4	—	—	2	B593 (2)
B2224	2' x 10' (610 x 3.048)	2	4	—	4	B1117 (2)	—	—
B2225	2' x 20' (610 x 6.096)	4	6	—	6	B1117 (3)	2	B1468 (2)
B2226	2' x 30' (610 x 9.144)	6	8	—	8	B1117 (4)	4	B1468 (2)
B2227	3' x 10' (914 x 3.048)	3	4	—	4	B514 (2)	—	—
B2228	3' x 20' (914 x 6.096)	6	6	—	6	B514 (3)	3	B1469 (2)
B2229	3' x 30' (914 x 9.144)	9	8	—	8	B514 (4)	6	B1469 (2)

Trapeze Support Kit for Snap-In or Cushion Hangers

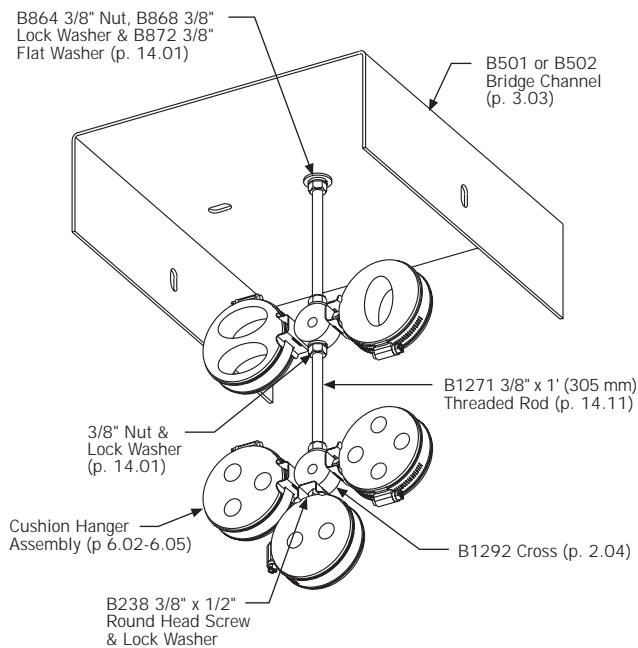
Trapeze Support Kits provide support for transmission lines on angle brackets suspended with 3/8" diameter threaded rod below 2' (610 mm) or 3' (914 mm) wide support bridges. The Trapeze Kits are available in single, double, or triple tiers for both widths of support bridges. As shown in the illustration, one leg of each angle bracket is furnished with holes for Snap-In Hangers and the other leg with holes for Cushion Hangers. Using the B1757 Adapter (page 6.01), the 3/4" (19 mm) diameter holes for Snap-In Hangers may be converted to 7/16" (11 mm) for use with Cushion Hangers. Hardware is included.



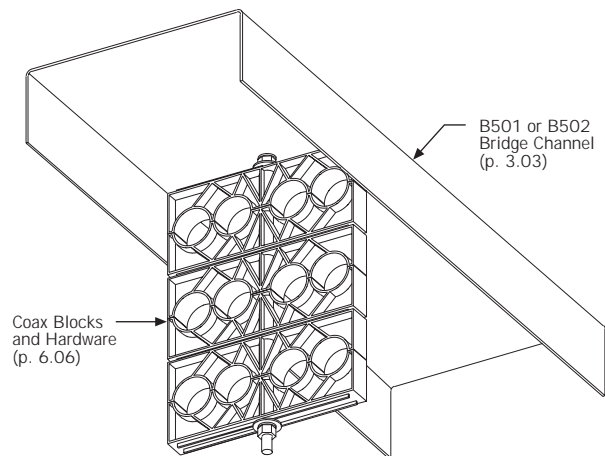
B1890 shown

Product Number	Bridge Width	Support Tiers	Threaded Rod Length	Hangers Supported	
				Cushion	Snap-In
B1888	2' (610 mm)	Single	1' (305 mm)	5	8
B1889	2' (610 mm)	Double	1' 6" (457 mm)	10	16
B1890	2' (610 mm)	Triple	2' (610 mm)	15	24
B1891	3' (914 mm)	Single	1' (305 mm)	8	13
B1892	3' (914 mm)	Double	1' 6" (457 mm)	16	26
B1893	3' (914 mm)	Triple	2' (610 mm)	24	39

Typical installation option using Cushion Hangers

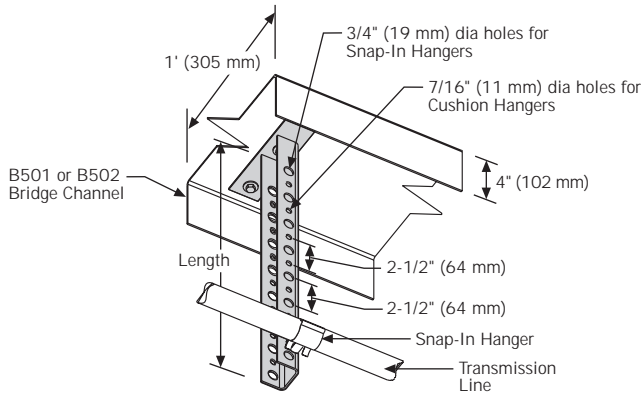


Typical installation option using Coax Blocks



Hanger Bracket for Snap-In Hangers, Cushion Hangers, or Butterfly Hangers

Hanger Brackets, supporting both Snap-In Hangers (p. 6.02), Cushion Hangers (p. 6.02-6.04) or Butterfly Hangers (p. 6.07) bolt below B501 and B502 Bridge Channels to provide protected horizontal support for transmission line runs. The Hanger Brackets are available in two models, supporting the number of Hangers shown below.
Galvanized

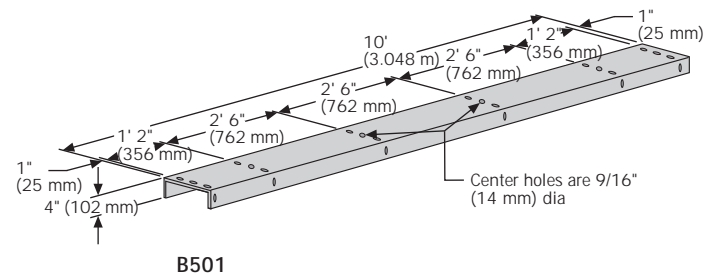


B1910 Shown

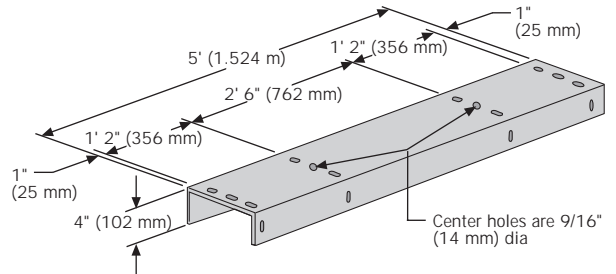
Product Number	Hangers Supported			Length
	Snap-In	Cushion	Butterfly	
B1752	12	6	10	1' 4-5/8" (422 mm)
B1910	16	8	14	1' 9-5/8" (549 mm)

Bridge Channel

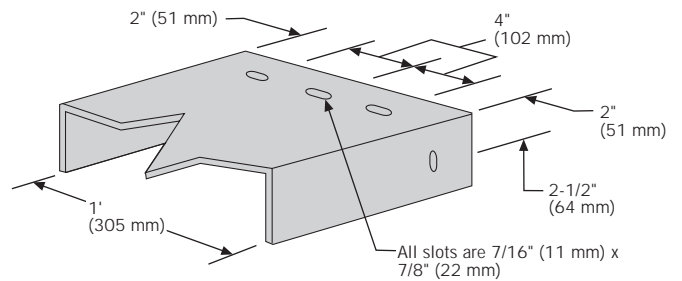
Bridge Channels provide support for horizontal transmission line runs as well as protection from hazards, such as falling ice. The channels are formed of 11-gauge (3 mm) steel and are hot-dip galvanized after fabrication. All slots are 7/16" (11 mm) x 7/8" (22 mm) long for 3/8" diameter hardware. Each section includes ten 3/8" diameter x 1-1/4" long bolts, nuts, lockwashers, and flatwashers for splicing or support. If cutting is required to accommodate unusual angles or lengths, the B186 Touch-up Kit or B364 Touch-up Spray (p. 13.04) is recommended for treating raw metal edges.



B501



B502

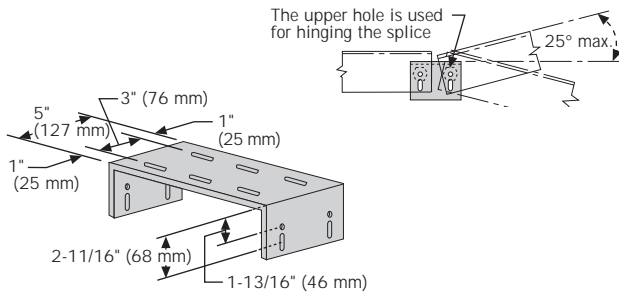


Detail

Product Number	Description
B501	10' (3.048 m) long
B502	5' (1.524 m) long

Straight & Hinged Splice*

A Splice is used to join two sections of Bridge Channel when the joint does not occur at a Pipe Head. A Splice is also used as a hinge to accommodate vertical angles. It is made of 11-gauge (3 mm) galvanized steel. Hardware is not provided. Galvanized

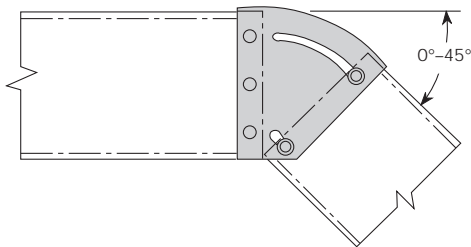


Holes are 7/16" (11 mm) diameter Slots are 7/16" (11 mm) x 1" (25 mm).

Product Number	Description
B503	Straight & Hinged Splice

Adjustable 0° - 45° Splice*

An Adjustable Splice is used to make horizontal bends from 0°-45°, either right or left. Made of galvanized plate. Hardware is not provided. Galvanized

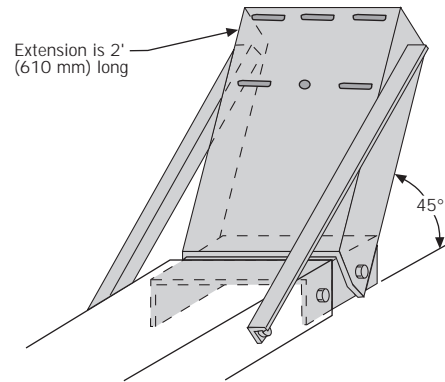


Product Number	Description
B504	Adjustable 0°-45° Splice

* A Pipe Column must be within 2' (610 mm) of either side of the B503 or B504 Splice.

Extension Kit for Bridge Channel

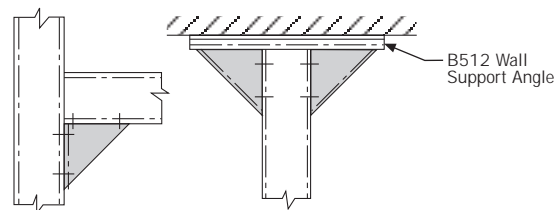
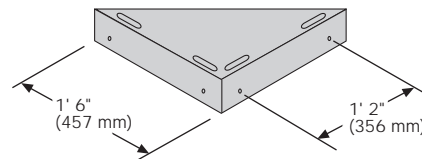
An Extension Kit permits a 45° extension at the end of a Bridge Channel to accommodate the bending radius of transmission line runs. Eleven bolt assemblies, 3/8" diameter x 1-1/4" long, are provided. The kit is galvanized after fabrication.



Product Number	Description
B1133	Extension for Bridge Channel

Corner Filler

Corner Fillers are used to provide ice protection for 90° bends of transmission line runs, or when a wider area of ice protection is needed over an Entry Panel. They are made of 11-gauge (3 mm) hot-dip galvanized steel. Four 3/8" diameter bolts, nuts, flatwashers and lockwashers are provided.

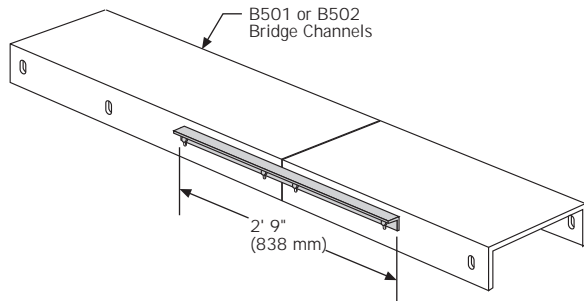


Product Number	Description
B505	Corner Filler

Splice Stiffener Kit for Bridge Channels

Splice Stiffener Kit is intended to support short Bridge Channel extensions or provide additional structural support to other Bridge Channel joints. The Kit is not intended to replace Pipe Heads or Canopy Angles for support of full length Bridge Channels.

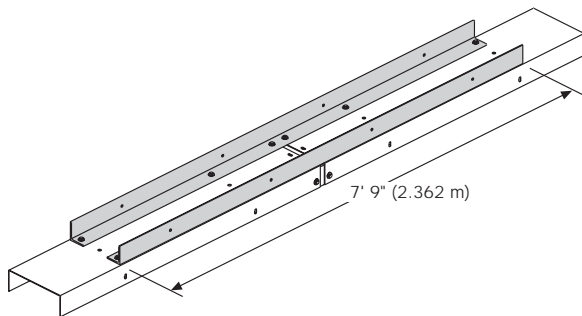
Kit includes two angles 2" (51 mm) x 2" (51 mm) x 3/16" (5 mm), 2' 9" (838 mm) long and is galvanized after fabrication. Hardware is not included.



Product Number	Description
B1223	Splice Stiffener Kit

Heavy Duty Splice Stiffener Kit for Bridge Channels

Stiffener Kit enables two B501 Bridge Channels, spliced together, to span 20' (6.10 m) between supports. The reinforced Bridge Channels will support 30 psf (1,436 N/m²) dead load. The Kit includes two angles 3-1/2" (89 mm) x 3" (76 mm) x 1/4" (6 mm), 7' 9" (2.362 m) long. Hardware is included.

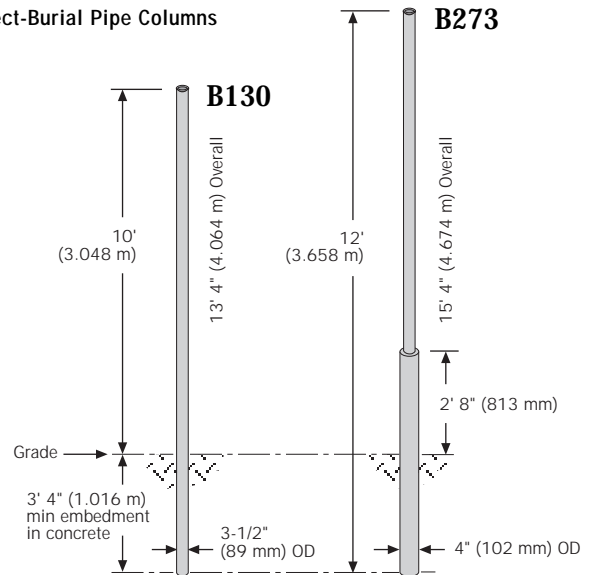


Product Number	Description
B1904	Heavy Duty Splice Stiffener Kit

Direct-Burial Pipe Columns

Pipe Columns are all 3-1/2" (89 mm) OD at the top and will accept any of the Pipe Heads, Truss Supports, or Canopy Supports shown in this section. When determining maximum height of the Pipe Columns, add the 2' (610 mm) of adjustment, available from the Pipe Heads and Trusses. All columns are hot-dip galvanized. The maximum spacing for Pipe Columns is 10' 1" (3.073 m) for Bridge Channels, and 20' (6.096 m) for Grating Bridge Channels.

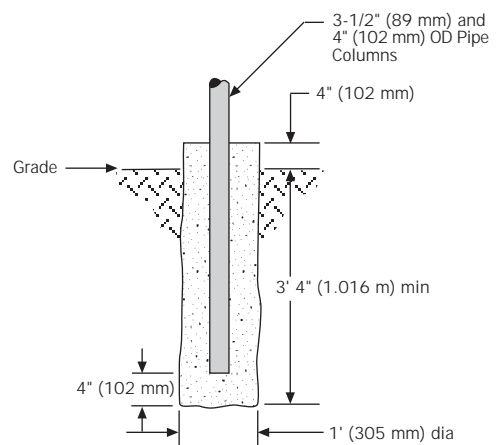
Direct-Burial Pipe Columns



Product Number	Description
B130	10' (3.048 m) Direct-Burial Pipe Column
B273	12' (3.658 m) Direct-Burial Pipe Column

Direct-Burial Footing for B130 and B273

Excavations for Pipe Column footings, in normal soil, should be prepared as illustrated below.

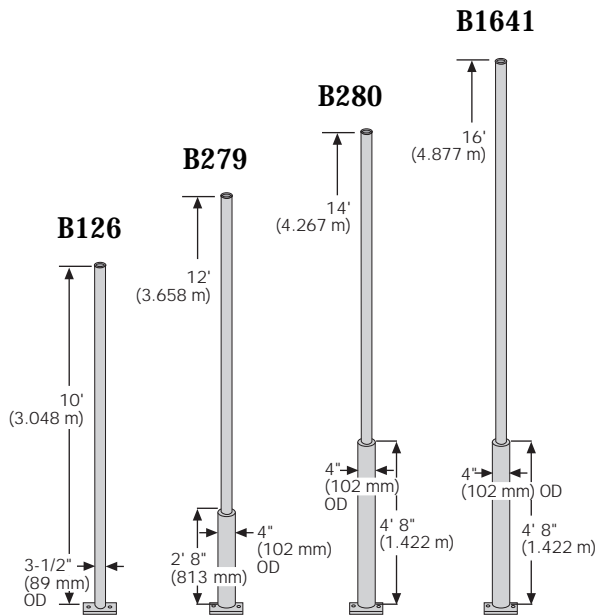


Anchor-Bolt Pipe Columns

Pipe Columns are all 3-1/2" (89 mm) OD at the top and will accept any of the Pipe Heads, Truss Supports, or Canopy Supports shown in this section. When determining maximum height of the Pipe Columns, add the 2' (610 mm) of adjustment, available from the Pipe Heads and Trusses. All Columns are hot-dip galvanized. The maximum spacing for Pipe Columns is 10' 1" (3.073 m) for Bridge Channels, and 20' (6.096 m) for Grating Bridge Channels.

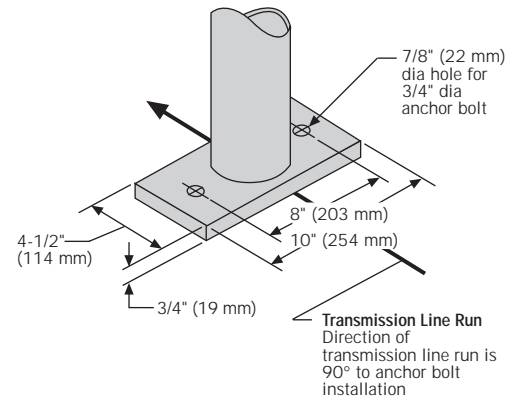
Anchor-bolt style Pipe Columns are available either with or without the anchor bolt weldment. The anchor bolt weldment consists of two 3/4" diameter x 4' (1.219 m) long bolts and tie bars.

Anchor-Bolt Pipe Columns



Pipe Column Height	Anchor-bolts Included	Anchor-bolts Excluded
10' (3.048 m)	B126	B126X
12' (3.658 m)	B279	B279X
14' (4.267 m)	B280	B280X
16' (4.877 m)	B1641	B1641X

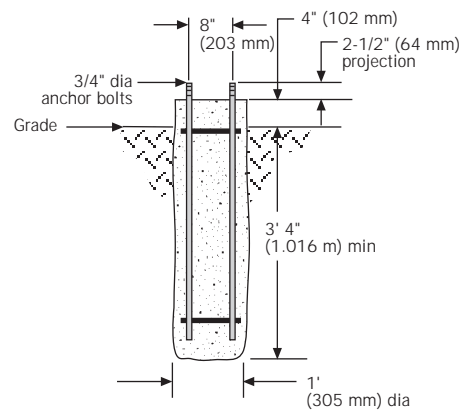
Pipe Column Base Plate



Anchor Bolt Footing

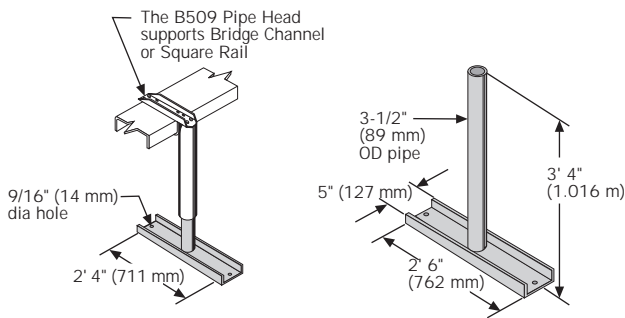
for B126, B279, B280, and B1641

Excavations for Pipe Column footings, in normal soil, should be prepared as illustrated below. Galvanized anchor bolts, lock washers and nuts are included with the indicated anchor-bolt style Pipe Columns.



Pipe Column for Roof Installation

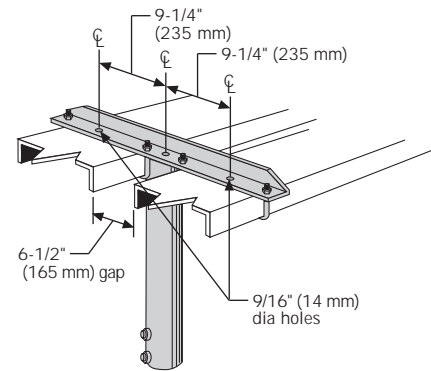
The B293 Pipe Column provides a versatile means for rooftop installation of transmission line runs. The Pipe Column bolts directly to the roof or to a concrete pad. With the 2' (610 mm) adjustment of either a B509 Pipe Head or B510 Truss Support, the Pipe Column provides an overall height from 3' 4" (1.016 m) to 5' 4" (1.626 m). The Pipe Column is hot-dip galvanized after fabrication and two 1/2" diameter x 2" long galvanized lag bolts are included. Non-penetrating Roof-Mounted Coax Bridge Kits are also available on page 5.01.



Product Number	Description
B293	Pipe Column for Roof Installation

Truss Support for Two Bridge Channels

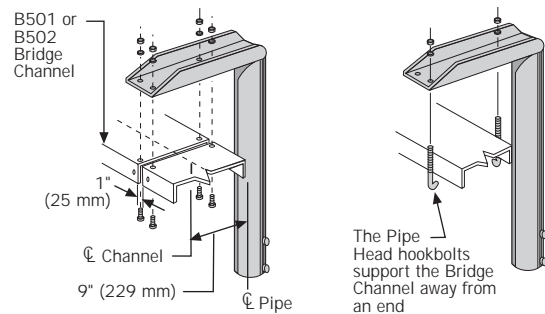
The Truss Support is used to support two 1' (305 mm) wide Bridge Channels. The pipe sleeve allows a 2' (610 mm) adjustment above the height of the Pipe Column and is locked in place with two 1/2" diameter set screws. The parts are hot-dip galvanized after fabrication and four hookbolt assemblies are furnished.



Product Number	Description
B510	Truss Support for two Bridge Channels
B510X	Truss Support without the pipe sleeve

Pipe Head for Bridge Channel

Pipe Heads are used with Pipe Columns to install 1' (305 mm) wide Bridge Channels. They allow a 2' (610 mm) adjustment above the height of the Pipe Column and are locked in place with two 1/2" diameter set screws spaced 5" (127 mm) apart. Channels are attached to the Pipe Head using their 3/8" diameter hardware or using the hookbolts provided with the Pipe Head. The Pipe Head arm may be inverted to provide for an inverted Bridge Channel installation. Galvanized

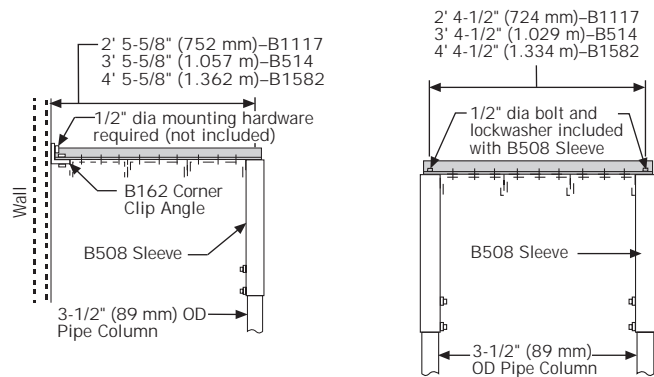


The Bridge Channel bolts are used to splice the Channel at the Pipe Head.

Product Number	Description
B509	Pipe Head for Bridge Channel

Canopy Angle

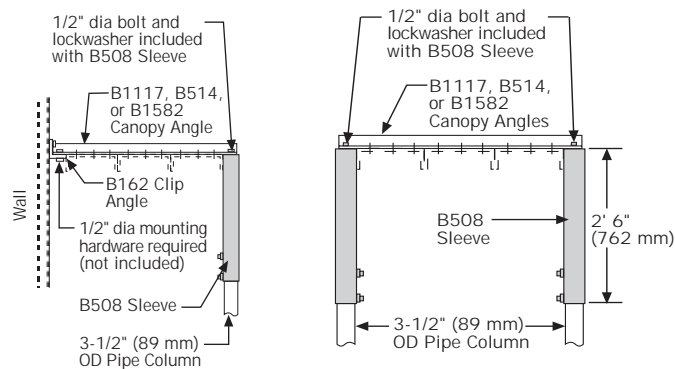
The Canopy Angle (B1117, B514, or B1582) and Canopy Sleeve (B508) are designed for use with Pipe Columns. The 2' 6" (762 mm) long Sleeve allows a 2' (610 mm) adjustment and is locked in place with two 1/2" diameter set screws. The B1117 and B514 Angles are 3-1/2" (89 mm) x 2-1/2" (62 mm) x 1/4" (6 mm). The B1582 Angle is 3-1/2" (89 mm) x 2-1/2" (62 mm) x 1/4" (6 mm). The units are galvanized after fabrication.



Canopy Angle may be inverted on the B508 Canopy Adapter Sleeve to support an inverted Bridge Channel

Product Number	Description
B1117	Canopy Angle for 2' (610 mm) bridge
B514	Canopy Angle for 3' (914 mm) bridge
B1582	Canopy Angle for 4' (1.219 m) bridge

Canopy Adapter Sleeve



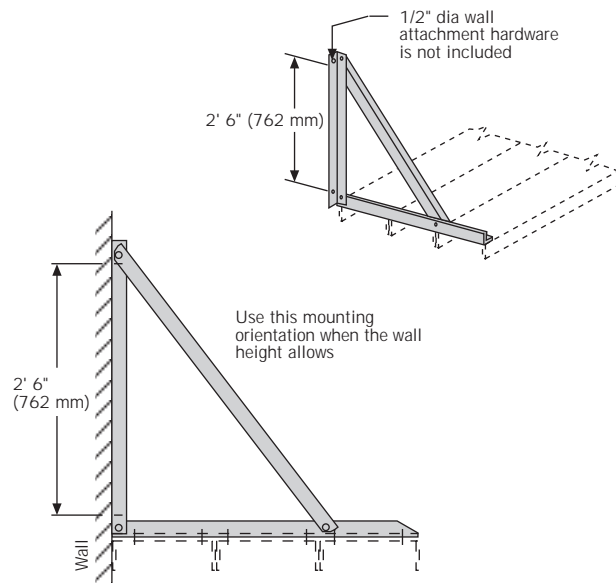
Angle can be mounted inverted to support inverted Channel

Product Number	Description
B508	Canopy Adapter Sleeve

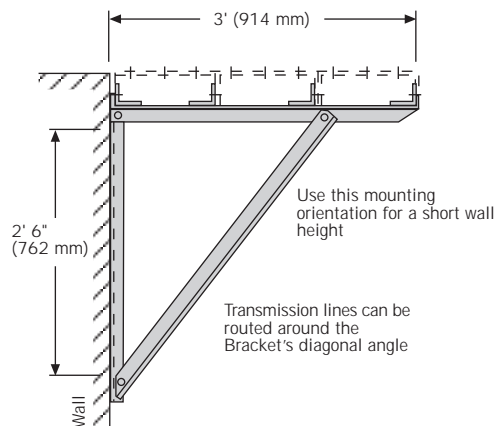
Canopy Wall Support Bracket

The Canopy Wall Support Bracket supports a 1' (305 mm) to 3" (914 mm) wide bridge running parallel to a wall and is used above building entries for transmission lines with a large bend radius. If the wall height allows, the Bracket is oriented with the Bridge Channels mounted below the Bracket. If not the Bracket is inverted and the Bridge Channels mounted on top, with the transmission lines routed around the diagonal angle of the Bracket. The 1/2" diameter hardware for wall mounting is not included. The Bracket is galvanized after fabrication.

Preferred Mounting



Alternate Mounting

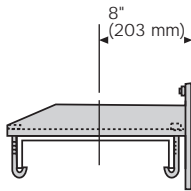
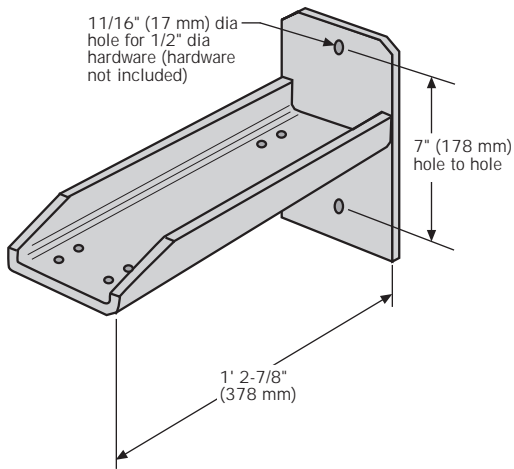


Product Number	Description
B507	Canopy Support Bracket

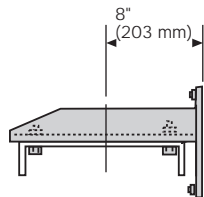
Wall Support Bracket

The B506 Wall Support Bracket supports a single Bridge Channel running parallel to a wall. Holes in the Bracket enable the Bridge Channel to be bolted directly or supported with hookbolts. The 1/2" diameter hardware for wall mounting is not included.

Galvanized



Hookbolt installation



Bolted through channel

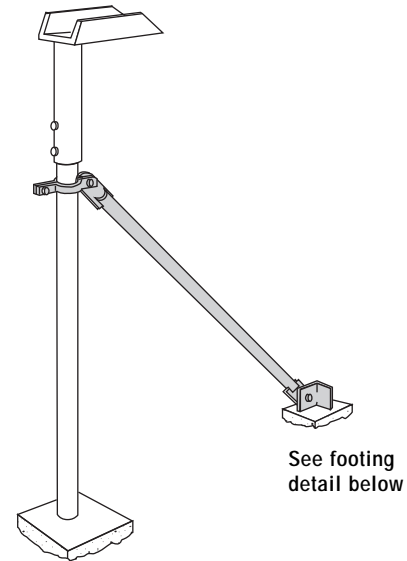
Bracket can be mounted inverted to support inverted Bridge Channel

Product Number	Description
B506	Wall Support Bracket

Stabilizer Kit for Pipe Column

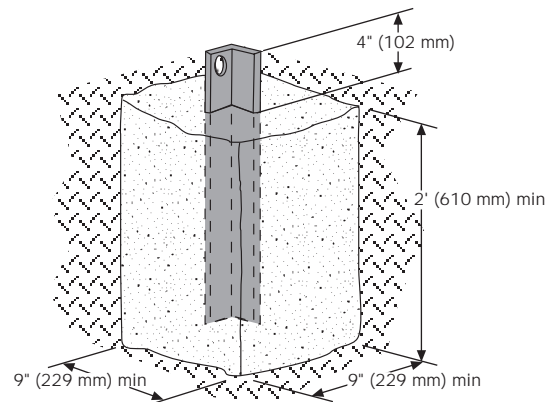
Recommended for bracing Pipe Columns when support bridges are long and/or heavily loaded. Minimizes column and bridge wobble. Supports bridge in either longitudinal or transverse directions.

The kit is galvanized after fabrication.



B593 includes:

- 1 - 3-1/2" (89 mm) OD pipe clamp
- 1 - Pipe 2-3/8" (60 mm) OD x 10' (3.048 m) long
- 1 - Angle 3" (76 mm) x 3" (76 mm) x 1/4" (6 mm), 2' (610 mm) long
- 3 - 1/2" dia x 1-3/4" bolts, nuts & lock washers



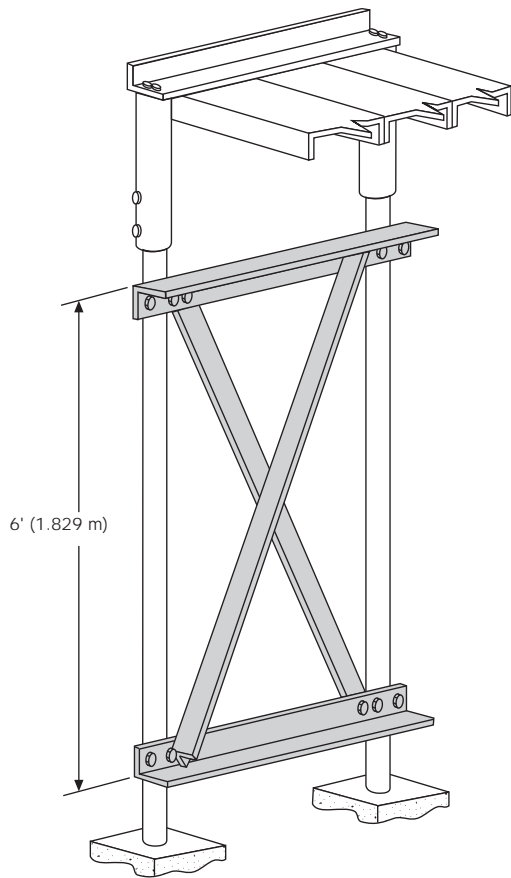
Footing Detail

Product Number	Description
B593	Stabilizer Kit for Pipe Column

X-Bracing Kit for Support Bridges

The X-Bracing Kit is recommended for stabilizing Pipe Columns used in 2' (610 mm), 3' (914 mm), or 4' (1.219 m) wide bridges. The Kit minimizes sway and wobble of the support bridge and may also be used with the B593 Stabilizer Kit for additional bracing.

The kit is galvanized after fabrication.



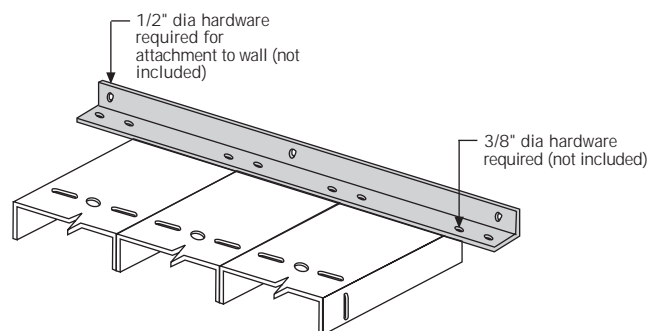
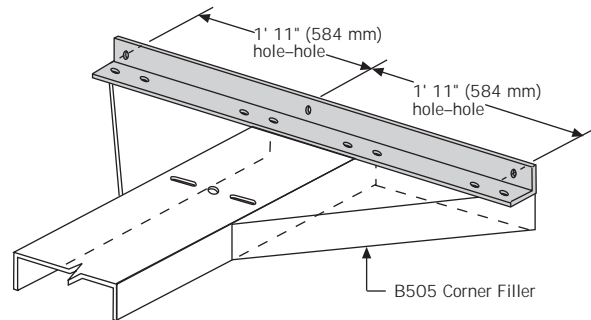
X-Bracing Kit includes:

- 2 - Horizontal angles
- 2 - Cross-brace angles
- 4 - 5/8" dia x 3-5/8" x 5" U-bolt assemblies
- 5 - 1/2" dia x 1-1/2" bolt, nut and lock washer assemblies (5/8" dia for B1583)

Product Number	Description
B1468	for 2' (610 mm) wide support bridge
B1469	for 3' (914 mm) wide support bridge
B1583	for 4' (1.219 m) wide support bridge

Wall Support Angle

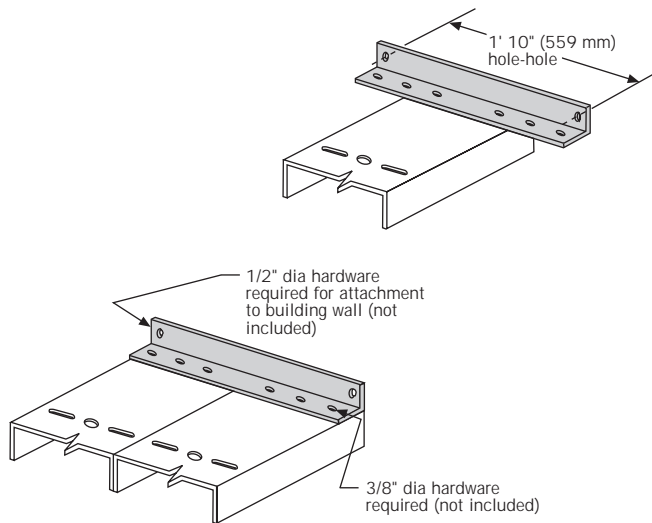
The B512 Wall Support Angle is used to support Bridge Channel and Corner Fillers above the Entry Panel at the wall. The angle is 3" (76 mm) x 3" (76 mm) x 3/16" (5 mm) x 4' (1.219 m) long and is galvanized after fabrication.



Product Number	Description
B512	Wall Support Angle

Wall Support Angle

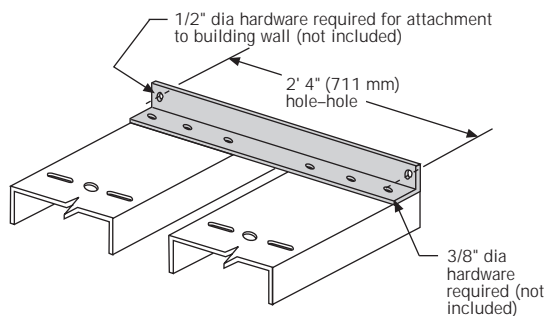
The B511 Wall Support Angle is used to support Bridge Channel above the Entry Panel at the wall. The angle is 3" (76 mm) x 2-1/2" (64 mm) x 1/4" (6 mm) x 2' (610 mm) long and is galvanized after fabrication.



Product Number	Description
B511	Wall Support Angle

Truss Wall Support Angle for Two Bridge Channels

The B1280 Truss Wall Support Angle is used to support two 1' (305 mm) wide Bridge Channels above the Entry panel at the wall. The angle is 3" (76 mm) x 3" (76 mm) x 3/16" (5 mm) x 2' 6-1/2" (775 mm) long and is galvanized after fabrication.



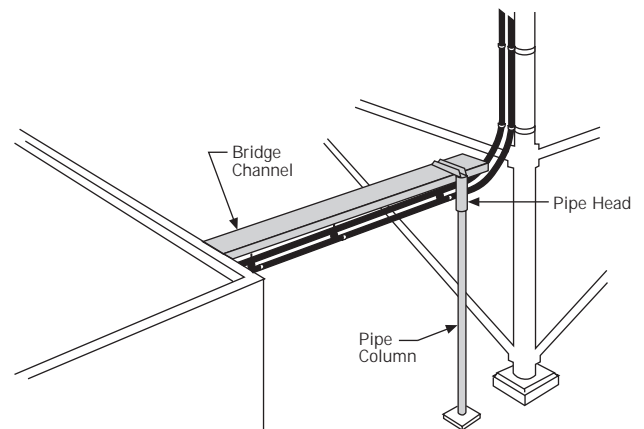
Product Number	Description
B1280	Truss Wall Support Angle

Bridge Support at Tower

The location of vertical transmission line runs on a tower is the prime consideration in deciding where and how the horizontal Bridge should be terminated at the tower.

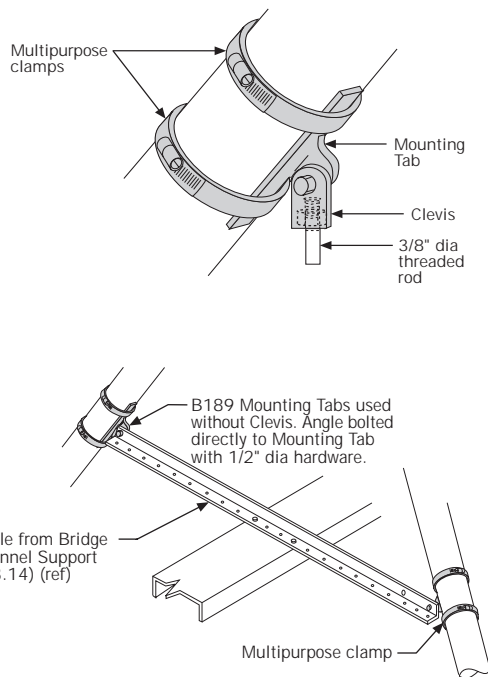
An easy method for planning and installing the horizontal Bridge is to position a Pipe Column near a tower leg, to support the end of the Bridge, as shown below. This eliminates any direct attachment to the tower and enables use of Pipe-Leg Support Clamps (section 2) for support of the vertical transmission line runs. When vertical runs are supported on ladders or center cage structures, the Pipe Column may be located close to those vertical-support structures.

When Bridge Channel is to be supported from the tower, the type of tower construction will usually determine the best method for attaching the Channel. The versatile products in this section enable Channels to be supported from the legs, girts, and diagonal braces of the tower. The product illustrations show the most common methods used.



Mounting Tab & Clevis Kit for Pipe Members

These assemblies are designed to provide an adjustable attachment point on a pipe tower without drilling through or damaging the protective finish of members. The base of the Mounting Tab is 5" (127 mm) long and is attached to the tower with two multipurpose clamps. A 1/2" diameter bolt and nut secure the Clevis to the Mounting Tab. A tapped hole in the Clevis accepts 3/8" diameter threaded rod for suspending Bridge Channel. Mounting Tab and Clevis are galvanized.



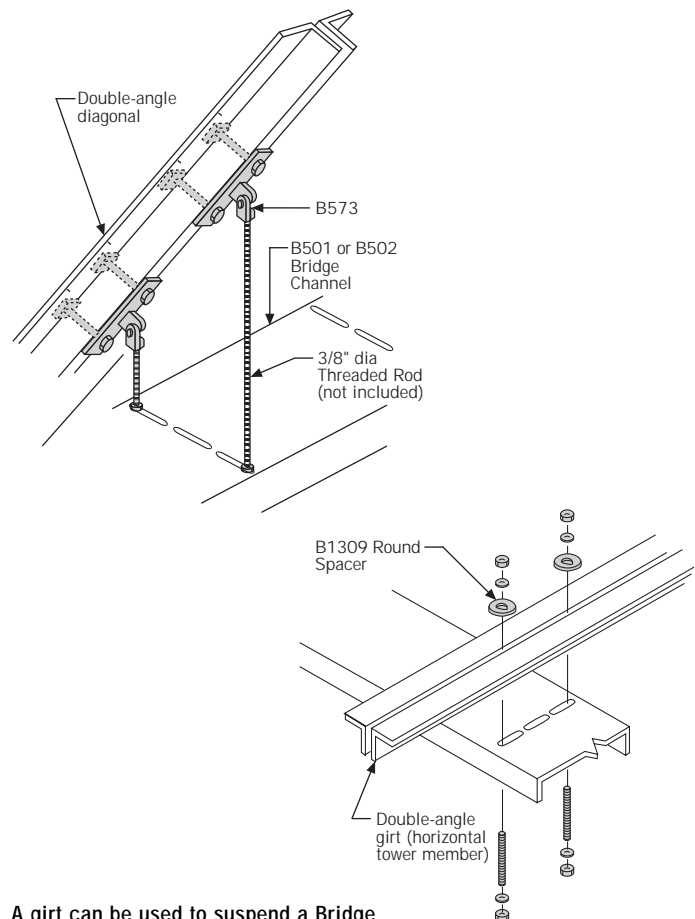
B189 includes:

- 1 - 5" (127 mm) Mounting Tab
- 1 - Clevis
- 1 - 1/2" dia x 1-1/2" (38 mm) long bolt, nut, and lockwasher
- 2 - Multipurpose clamps

Product Number	Description
B189	Mounting Tab & Clevis Kit

Mounting Tab & Clevis Kit for Double-Angle Members

These assemblies are designed to provide an adjustable attachment point on a double-angle diagonal without drilling or damaging the protective finish of members. The base of the Mounting Tab is 5" (127 mm) long and is attached to the tower with two 3/8" diameter x 6" (152 mm) long stainless steel threaded rods. A 1/2" diameter bolt and nut secure the Clevis to the Mounting Tab. A tapped hole in the Clevis accepts 3/8" diameter threaded rod for suspending the Bridge Channel. Mounting Tab and Clevis are galvanized.



A girt can be used to suspend a Bridge Channel with 3/8" diameter threaded rod and B1309 Round Spacer. Rod length can be varied to level Bridge Channel.

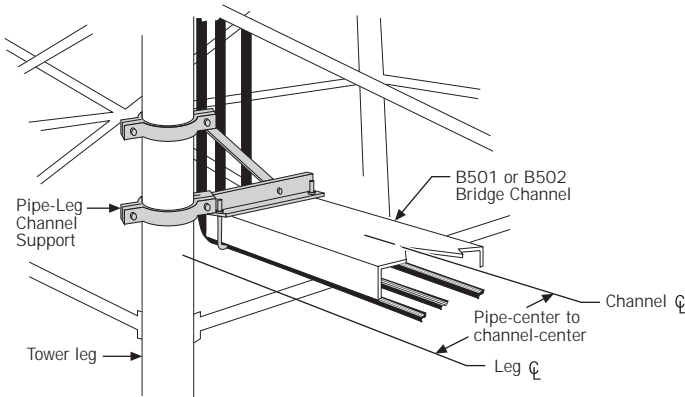
B573 includes:

- 1 - 5" (127 mm) Mounting Tab
- 1 - Clevis
- 1 - 1/2" dia x 1-1/2" (38 mm) long bolt, nut and lockwasher
- 4 - 3/8" dia ss nuts
- 4 - 3/8" dia ss lockwashers
- 2 - 1-1/2" dia round spacers
- 2 - 3/8" dia x 6" (152 mm) long ss threaded rods

Product Number	Description
B573	Mounting Tab & Clevis Kit

Pipe-Leg Channel Support

Supports Bridge Channel positioned next to pipe tower leg.
Hot-dip galvanized.



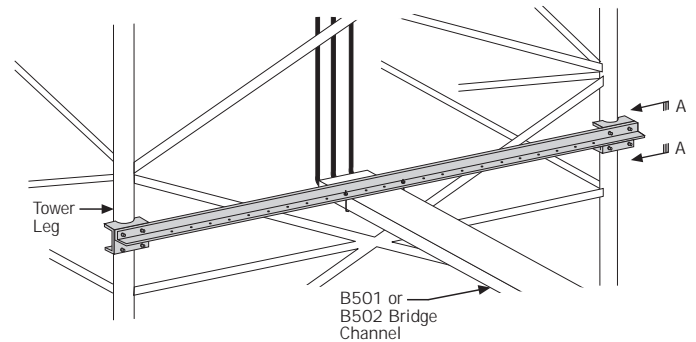
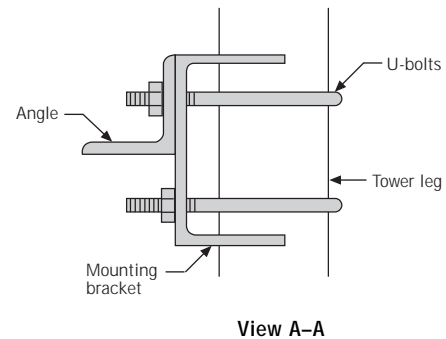
Pipe-Leg Channel Support includes:

- 2 - Pipe clamps
- 1 - Angle
- 1 - Flatbar
- 5 - 1/2" dia x 1-3/4" (44 mm) long bolts, nuts and lockwashers
- 2 - 3/8" dia x 5-1/2" (140 mm) long hookbolts, nuts and lockwashers

Product Number	Tower Leg OD	Pipe-Center to Channel-Center
For 1' (305 mm) Bridge		
B588	2-7/8" (73 mm)	1' 1/8" (308 mm)
B589	3-1/2" (89 mm)	1' 7/16" (316 mm)
B1202	4" (102 mm)	1' 11/16" (322 mm)
B584	4-1/2" (114 mm)	1' 15/16" (329 mm)
B590	5-9/16" (141 mm)	1' 1-1/2" (343 mm)
B585	6-5/8" (168 mm)	1' 2" (356 mm)
B586	8-5/8" (219 mm)	1' 3" (381 mm)
B591	10-3/4" (273 mm)	1' 4-1/16" (408 mm)
B592	12-3/4" (324 mm)	1' 5-1/16" (433 mm)
B2146	14" (356 mm)	1' 5-11/16" (449 mm)
B2147	16" (406 mm)	1' 6-1/16" (475 mm)
B2148	18" (457 mm)	1' 7-1/16" (500 mm)
B2149	20" (508 mm)	1' 8-1/16" (525 mm)
B2150	22" (559 mm)	1' 9-1/16" (551 mm)
B2151	24" (610 mm)	1' 10-1/16" (576 mm)
For 2' (610 mm) Bridge		
B1210	2-7/8" (73 mm)	1' 6-1/8" (460 mm)
B1211	3-1/2" (89 mm)	1' 6-7/16" (468 mm)
B1212	4" (102 mm)	1' 6-11/16" (474 mm)
B1213	4-1/2" (114 mm)	1' 6-15/16" (481 mm)
B1214	5-9/16" (141 mm)	1' 7-1/2" (495 mm)
B1215	6-5/8" (168 mm)	1' 8" (508 mm)
B1216	8-5/8" (219 mm)	1' 9" (533 mm)
B1217	10-3/4" (273 mm)	1' 10-1/16" (560 mm)
B1218	12-3/4" (324 mm)	1' 11-1/16" (586 mm)
B2152	14" (356 mm)	1' 11-11/16" (602 mm)
B2153	16" (406 mm)	2' 11/16" (627 mm)
B2154	18" (457 mm)	2' 1-11/16" (652 mm)
B2155	20" (508 mm)	2' 2-11/16" (678 mm)
B2156	22" (559 mm)	2' 3-11/16" (703 mm)
B2157	24" (610 mm)	2' 4-11/16" (729 mm)

Bridge Channel Support for 800 Series Tower

These Bridge Channel Supports mount to Microflect 800 Series vertical tower bays with a 5' (1.524 m) face with 2-7/8" (73 mm) OD legs or a 9' (2.743 m) face with 4-1/2" (114 mm) OD legs. These Bridge Channel Supports may be installed at any height on these tower bays, and the Bridge Channel may be attached at various positions across the horizontal angle. Bridge Channel Support is hot-dip galvanized.



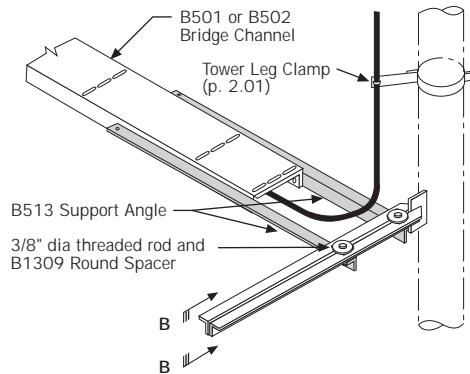
Channel Support includes:

- 1 - Angle 3" (76 mm) x 3" (76 mm) x 1/4" (6 mm)
- 4 - U-bolt assemblies
- 2 - Mounting brackets
- 2 - Hookbolts with nuts and lockwashers

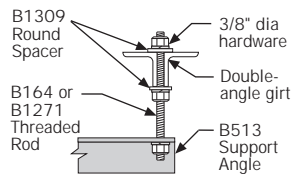
Product Number	For Tower Bay Width	Vertical Pipe-Leg Size
B1136	5' (1.524 m)	2-7/8" (73 mm) OD
B1065	9' (2.743 m)	4-1/2" (114 mm) OD

Support Angle for Bridge Channel

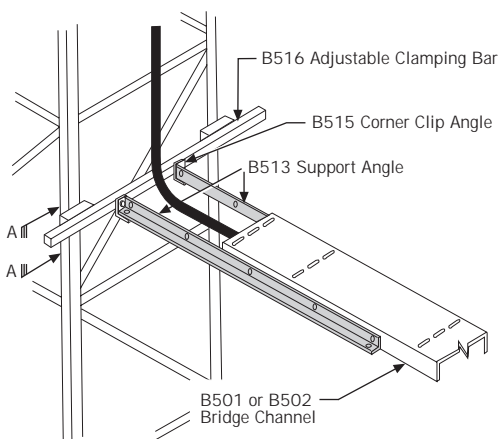
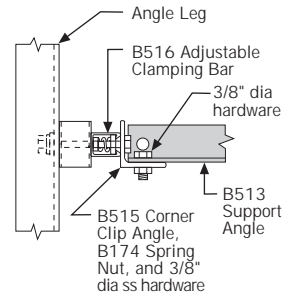
Two methods are shown below for using the B513 Support Angle to transition a vertical transmission line run to a horizontal bridge. The single 5' (1.524 m) long Angle is furnished with 7/16" (11 mm) diameter holes for attaching the Bridge Channel. The angle size is 2-1/2" (64 mm) x 2-1/2" (64 mm) x 3/16" (5 mm). The angle is hot-dip galvanized and mounting hardware is not included.



View B-B



View A - A

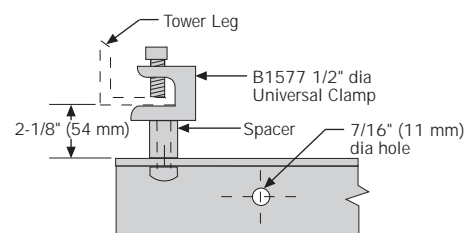
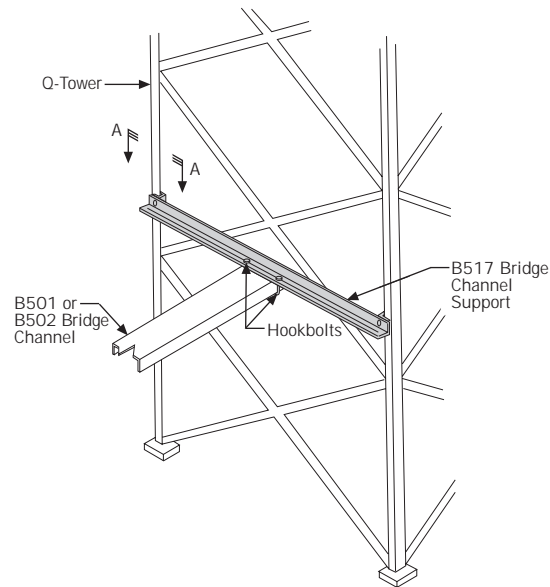


Note that sufficient space is provided to bend the transmission line for the vertical run.

Product Number	Description
B513	Support Angle for Bridge Channel

Bridge Channel Support for Q-Tower

The B517 Bridge Channel Support mounts directly to Q-Tower angle legs and is designed to support the end of a Bridge Channel at the tower. This product differs from the B516 Adjustable Clamping Bar (page 2.10) which supports a B517 Bridge Channel that ends before reaching the tower. The B517 Support may be installed at any height on the Q-Tower, and the Bridge Channel may be attached at various positions across the horizontal angle. The Bridge Channel Support is hot-dip galvanized.



View A-A

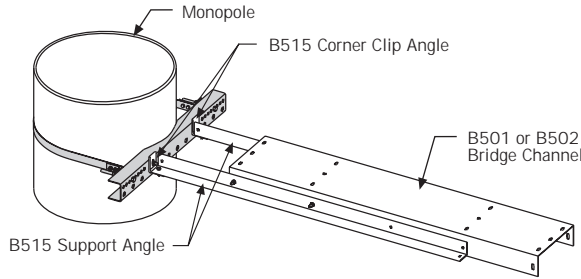
B517 includes:

- 1 - Angle 3" (76 mm) x 3" (76 mm) x 1/4" (6 mm), 7' 2" (2.184 m) long
- 2 - Spacers
- 2 - 1/2" dia x 2-1/2" (64 mm) long bolts and lockwashers
- 2 - 3/8" dia hookbolts
- 2 - B5177 Universal Clamps

Product Number	Description
B517	Bridge Channel Support for Q-Tower

Monopole Channel Support

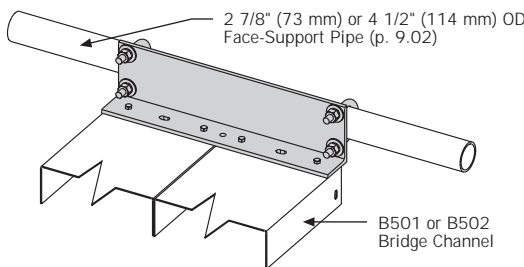
The Monopole Channel Support mounts directly to the Monopole, and will support the end of a Bridge Channel. Using the B515 Corner Clip Angle and B513 Support Angle the Bridge Channel will attach to the Monopole allowing room for the transmission line to bend from vertical to horizontal. The Monopole Channel Support may be installed at any height on the Monopole.
Galvanized



Product Number	Fits
B1949	16"-18" OD pipe
B1950	20"-22" OD pipe
B1951	24"-26" OD pipe
B1968	28"-30" OD pipe

Bridge Channel Support System for Pipe-Leg Tower Face

The Bridge Channel Support System enables the attachment of a 1' (305 mm) or 2' (610 mm) wide Waveguide Bridge on the face of a pipe-leg tower with a vertical face or with a face taper up to 20:1. The System is composed of three components and the individual products are selected based on the size of the pipe-leg and width of the tower face. The Waveguide Bridge Support Angle is available for a 2-7/8" (73 mm) OD or a 4-1/2" (114 mm) OD pipe depending upon the Face-Supports Pipe chosen. (See page 9.02 for the Pipe-Leg Bracket Kit and Face Support Pipe) Galvanized

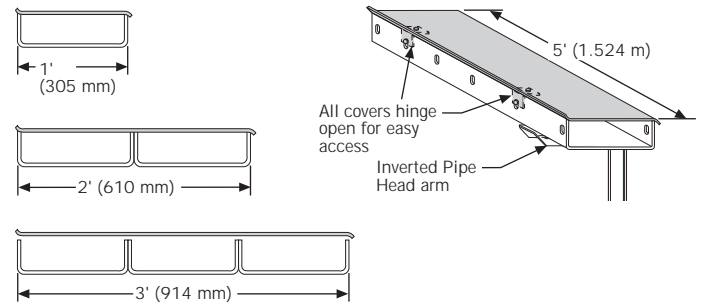


Product Number	Fits Face Support Pipe
B2240	Support Angle for 2-7/8" (73 mm) OD pipe
B2262	Support Angle for 4-1/2" (114 mm) OD pipe

Bridge Channel Cover

Bridge Channel Covers are designed for use with inverted Bridge Channels. Covers provide protection from ice, wind, and other elements. Covers are formed 11-gauge (3 mm) steel and are hot-dip galvanized after fabrication. All Covers are 5' (1.524 m) long. If cutting is required to accommodate unusual lengths, the B186 Touch-up Kit or B364 Touch-up Spray (page 13.04) is recommended for treating raw metal edges.

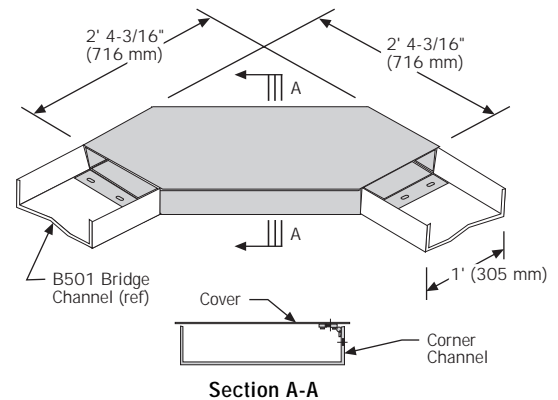
Mounting hardware is included.



Product Number	Description
B1220	Cover for 1' (305 mm) wide bridge
B1221	Cover for 2' (610 mm) wide bridge
B1222	Cover for 3' (914 mm) wide bridge

Covered 90° Corner Channel for Inverted Bridge

The Covered 90° Corner Channel provides a protected 90° bend for an inverted covered bridge. The tray of the Corner Channel allows for the bending radius of 2' (610 mm) for transmission line and is furnished with tabs at both ends for bolting to the connecting inverted Bridge Channels. The hinged cover protects from ice and wind and is compatible with the Bridge Channel Covers. Both the tray and the cover are formed with 11-gauge (3 mm) steel that is hot-dipped galvanized after fabrication.



Product Number	Description
B1718	Covered 90° Corner Channel