

Composite Testing



Contents

COMPRESSION3
SHEAR.....5
FLEXURE.....7
TENSILE8
INTERLAMINAR FRACTURE TOUGHNESS.....9



COMPRESSION

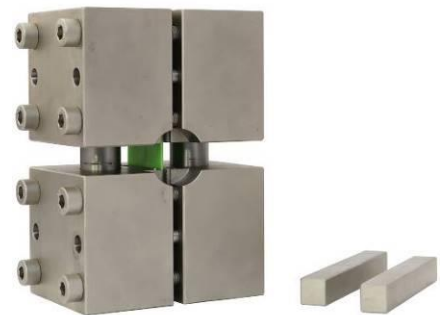
| Fixture item no.: | Applicable test standards |
|-------------------|--|
| THS705 | ASTM-D6641, DIN EN ISO14126 (method B) |
| THS613 | ASTM-D3410, ISO8515, DIN EN ISO14126 (method A), AiTM1-0008 |
| TH121 | ASTM-6641, ASTM-D3410, EN2850-TypeA, DIN EN ISO14126 (method A) |
| THS793 | ASTM-D695-Fig.4, ASTM-D3846, EN2850, DIN EN ISO14126-Fig.C2, GOST 9550, SACMA-SRM1 |
| THS818-30 | ASTM-D7137, ASTM-D7136, AITM-0010, BBS7260, DIN65561, ISO18352 |
| THS985 | ASTM-D6484, ASTM-D7615, ASTM-D5961 |
| THS1510 | ASTM-F2378, DIN13555 |

THS705

Combined loading compression test fixture

to determine compressive properties of polymer matrix composite materials according to ASTM-D6641, DIN EN ISO14126 (method B) using a combination of end loading and shear loading.

 [Data sheet](#)



THS613

Compression loading test fixture for composite testing

according to ASTM-D3410, ISO8515, DIN EN ISO14126 (method A), AiTM1-0008.

 [Data sheet](#)



THS793

Compression test fixture

to determine compressive strength and compressive modulus of plastic or composite specimens according to ASTM-D695-Fig.4, ASTM-D3846, EN2850, DIN EN ISO14126-Fig.C2, GOST 9550-81, SACMA-SRM1.

 [Data sheet](#)



TH121

Celanese compression test fixture

for fibre reinforced plastic composites according to ASTM-6641, ASTM-D3410, EN2850-TypeA, DIN EN ISO14126 (method A)

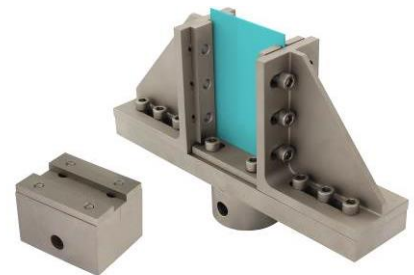


THS818-30

Residual strength compression test fixture

for composite plates according to ASTM-D7137, AITM-0010, BBS7260, ASTM-D7136, DIN65561, ISO18352.
Compression after impact.

 [Data sheet](#)



THS985

Open-hole compressive strength test fixture

for polymer matrix composite laminates according to ASTM-D6484, ASTM-D7615 and ASTM-D5961.

 [Data sheet](#)



THS1510

Compression test fixture

to test sealability of sheet, composite, and solid form-in-place gasket materials according to DIN13555 and ASTM-F2378.



SHEAR

| Fixture item no.: | Applicable test standards |
|---------------------|---|
| THS600 | ASTM-D5379 |
| THS722 | ASTM-D7078 |
| THS962-10 | ASTM-D4255 |
| TH238-ISO19927 | ISO19927 |
| TH103-ASTM-D2344 | ASTM-D2344-Fig.6 and Fig. 5 |
| TH238+THS884-EN2562 | DIN EN2562, DIN EN2563, DIN EN2377, DIN EN ISO14130 |
| THS1093-30 | N.A. O-ring similar composite specimens |

THS600

V-notched beam shear test fixture

to test shear properties of composite materials according to ASTM-D5379 (the Iosipescu method)

 [Data sheet](#)



THS722

V-notched rail shear test fixture

to test shear properties of composite materials according to ASTM-D7078

 [Data sheet](#)



THS962-10

Rail shear test fixture to measure in-plane shear properties of polymer matrix composite materials according to ASTM-D4255



TH238-ISO19927

Double beam shear test fixture to determine interlaminar strength
and modulus of fibre-reinforced plastic composites according to ISO19927



TH103-ASTM-D2344

Short-beam strength test fixture
for polymer matrix composite materials and their laminates
according to ASTM-D2344

 [Datasheet](#)



TH238+THS884-EN2562

Interlaminar shear strength test fixture
according to DIN EN2562, DIN EN2563, DIN EN2377, DIN EN ISO14130
to test carbon fibre reinforced plastics



THS1093-30

Special shear test fixture for O-ring similar composite samples
Applicable for specimens with diameter 70-170 mm



FLEXURE

| Fixture item no.: | Applicable test standards |
|--------------------------------|---------------------------|
| TH103-CL5-T120-ASTM-D6415 | ASTM-D6415 |
| TH238-iTH1-CN10.16-ASTM-C1341 | ASTM-C1341 |
| TH22-5P-240-CWLD4+D10-ISO14125 | DIN EN ISO14125 |

TH103-CL5-T120-ASTM-D6415

Curved beam strength fixture

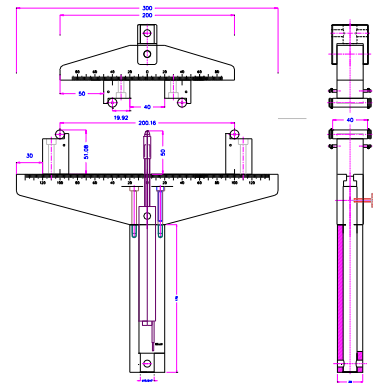
for fiber-reinforced polymer-matrix composite according to ASTM-D6415



TH238-iTH1-CN10.16-ASTM-C1341

Bend test fixture according to ASTM-C1341

to test flexural properties of continuous fiber-reinforced advanced ceramic composites



TH22-5P-240-CWLD4+D10-ISO14125

5-point bend test fixture according to DIN EN ISO14125

to determine flexural properties of fiber-reinforced plastic composites



TENSILE

TH175

Pneumatic wedge grip

10, 20, 50, 100, 300 kN versions



[Datasheet](#)

See [test video](#)



THS1302-10-NOSH

Pneumatic non-shift wedge grip

10 kN



[Datasheet](#)



THS127-10

Vise wedge grip for complicated specimens

10 kN



[Datasheet](#)



THS90

Vise grip

50 kN



[Datasheet](#)



INTERLAMINAR FRACTURE TOUGHNESS

| Fixture item no.: | Applicable test standards |
|-----------------------------|---------------------------|
| THS1266-20-ASTM-D5528-FA11a | ASTM-D5528-FA11a |
| THS353 | ASTM-D5528-FA11b |
| THS815 | ASTM-D6671 |

THS1266-20-ASTM-D5528-FA11a

Mode I interlaminar fracture toughness fixture
 to test unidirectional fiber-reinforced polymer matrix composites according to ASTM-D5528-FA11a.
 Piano hinges



THS353-LB-25.4-13-ASTM-D5528-FA11b

Mode I interlaminar fracture toughness fixture
 to test unidirectional fiber-reinforced polymer matrix composites according to ASTM-D5528-FA11a.
 Loading blocks

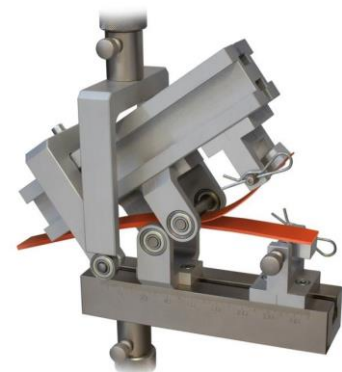
 [Data sheet](#)



THS815

Mixed-mode bend test fixture according to ASTM-D6671
 to measure mixed mode I - mode II interlaminar fracture toughness of unidirectional fiber-reinforced polymer matrix composites

 [Data sheet](#)





**Interlaminar
fracture toughness**



Flexure



**Composite
Testing**



Compression



Shear