

Compressor Sizes

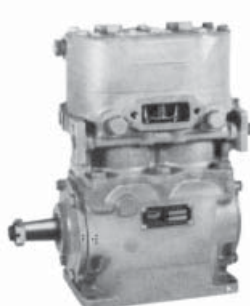
BX-2150™ Compressor
9.5 CFM AT 1250 RPM



Tu-Flo® 400 Compressor
7.25 CFM AT 1250 RPM



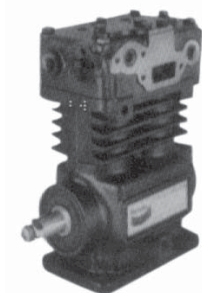
Tu-Flo® 500 Compressor
12 CFM AT 1250 RPM



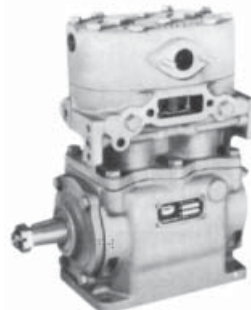
Tu-Flo® 501 Compressor
12 CFM AT 1250 RPM



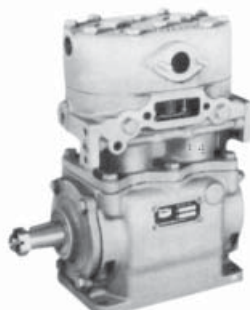
Tu-Flo® 550 Compressor
13.2 CFM AT 1250 RPM



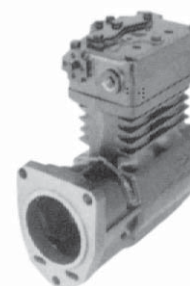
Tu-Flo® 600 Compressor
14.5 CFM AT 1250 RPM



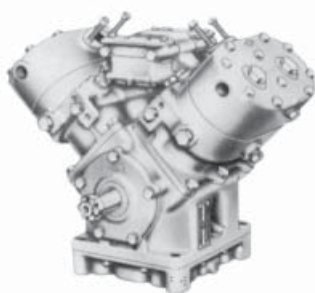
Tu-Flo® 700 Compressor
15.5 CFM AT 1250 RPM



Tu-Flo® 750 Compressor
16.5 CFM AT 1250 RPM



Tu-Flo® 1000 Compressor
24 CFM AT 1250 RPM



Tu-Flo® 1400L Compressor
31 CFM AT 1250 RPM



DuraFlo 596™ Compressor
27 CFM AT 1250 RPM

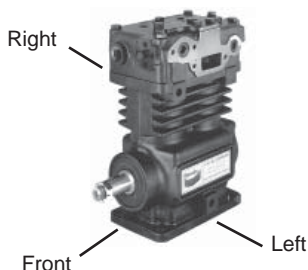


BA-921® Compressor
15.8 CFM AT 1250 RPM



- Bendix air compressors are designed to meet a wide range of vehicle needs.
 - Several sizes and various mounting configurations are available.
 - Compressors are available remanufactured exchange.
- V.M.R.S. 13-009-000

Unless indicated, inlet & discharge locations are as shown.



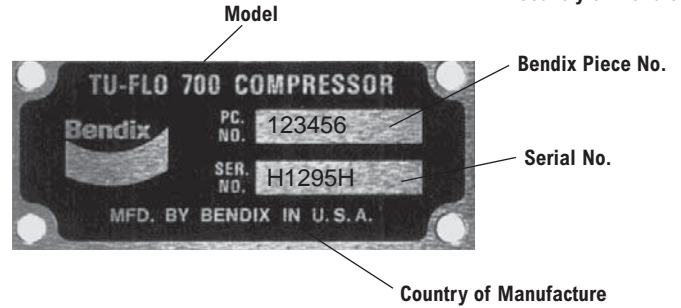
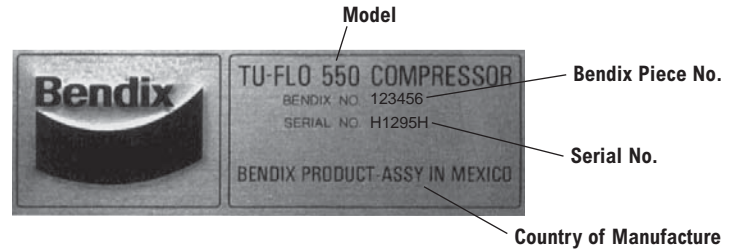
BA-922® Compressor
31.6 CFM AT 1250 RPM



Compressor Nameplates

A nameplate is attached to the crankcase of all compressors. It displays the model, piece number (PC. NO.) and serial number (SER. NO.). When making reference to a particular compressor use the piece number (PC. NO.) stamped on the nameplate.

The serial number is interpreted as follows: First is an alpha character (A through M skipping the letter I) representing January through December. The next four characters are numbers representing the day of the month followed by the year (two digits for each). The sixth and last character represents the manufacturing plant. For example serial number H1295H indicates the product was manufactured on August 12, 1995 in the Huntington, Indiana facility.



Gaskets



Inlet Flange Gasket Pc. No. 243430N

For all Tu-Flo® Compressors
except Tu-Flo® 300 Compressor

Service New Pc. No.	Compressor
5013553	Tu-Flo® 550/750
5016795	Tu-Flo® 501

Base Plate Gasket

For compressors with 1/2" bottom drain port



Phone Numbers:
1-800-AIR BRAKE
(1-800-247-2725)

Fax: 440-329-9556

BA-921® Remanufactured Compressors

w/core group and core class identification



BA-921®
Air Compressor
(Core Class 2K)
3126, C7, C9
5010806X

**Note: Flange gasket
must be purchased
from Caterpillar.**

CAT
Core Group 1K



BA-921®
Air Compressor
(Core Class 2K)
C11 Acert, C13 Acert
5014428X

external oil return line

C15 Acert, C18 Acert
5012533X

CAT
Core Group 1K

BA-921® Compressor Kits

Part No.	Description
Maintenance Kits	
5008558	Cylinder Head Gasket Kit
5008557	Unloader Kit
5014183	Governor Adapter Kit
5008559	Compressor Seal Kit
5012367	CAT C7/C9 Engine Interface Seal Kit
5012369	CAT C15/C18 Engine Interface Seal Kit
5012371	DDC S60 Engine Interface Seal Kit

BA-922® Remanufactured Compressors

w/core group and core class identification

Caution!
BA-922® air compressors
can not be turbocharged.



CAT
Core Group 1P

BA-922®
Air Compressor
(Core Class 1P)
C11 Acert, C13Acert
5013058X
(42 tooth drive gear)

BA-922®
Air Compressor
(Core Class 1P)
C15 Acert, C18 Acert
5013059X
(40 tooth drive gear)



DDC
Core Group 1L

BA-922®
Air Compressor
(Core Class 1L)
Series 60 non-EGR
& **Series 50**
5013695X
(69 tooth drive gear with a
21 tooth spline)

Equinox Engine
5012895X

A changeover kit is required
if replacing a Tu-Flo® 750 or
DuraFlo 596™ compressor.
See BW2524 for additional
information.



John Deere
Tier 3 PowerTech Plus™
Core Group 1N

BA-922®
Air Compressor
(Core Class 1N)
5016389X
(drive gear not included)

BA-922® Compressor Kits

Part No.	Description
<u>Maintenance Kits</u>	
5014472	Cylinder Head Gasket Kit
5014473	Unloader Kit
5014183	Governor Adapter Kit
5008559	Compressor Seal Kit
K033300	CAT Cylinder Head Assembly Kit
5012369	CAT C11, C13, C15, C18 Engine Interface Kit
5012371	DDC S60 Engine Interface Kit
5018827	John Deere Engine Interface Kit
<u>Changeover Kits</u>	
5015871	Series 50 CNG Kit
5016263	Series 50 Diesel, Series 60 non-EGR (rear mount ECM)
5016728	Series 50 Diesel, Series 60 non-EGR (side mount ECM)

Tu-Flo® 550 & Tu-Flo® 750 Remanufactured Compressors

w/core group and core class identification



CAT
Core Group 1A

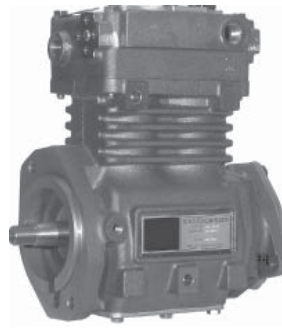
Tu-Flo® 550
Air Compressor
(Core Class 1A)
3406, C10, C12, C15, C16
5002984X
(rear end cover studs)
3176, C15, C16
5005790X

107509X
(2 ½° tilt)

Tu-Flo® 750
Air Compressor
(Core Class 2A)
3406, C10, C12, C15, C16
5002713X
(rear end cover studs)

3176, C15, C16
5002983X

107508X
(2 ½° tilt)



CAT
3116, 3126,
C7 Acert, C9 Acert
Core Group 1A

Tu-Flo® 550
Air Compressor
(Core Class 1A)
5011016X

***5008249X**

107981X
(Left Inlet)

Tu-Flo® 750
Air Compressor
(Core Class 2A)
5004118X

Top inlet unless noted.
Removable rear flange cover.

* High torque thru drive.



CAT 3306
Core Group 1A

Tu-Flo® 550
Air Compressor
(Core Class 1A)
109251X

Tu-Flo® 750
Air Compressor
(Core Class 2A)
109287X



Cummins ISB & C
Core Group 1E

37 tooth gear

Tu-Flo® 550
Air Compressor
(Core Class 1E)
108804X
(top air inlet)

109653X
(left air inlet)

Tu-Flo® 750
Air Compressor
(Core Class 2E)
109382X
(top air inlet)



Cummins
ISM, N14, M11
Core Group 1B

Tu-Flo® 550
Air Compressor
(Core Class 1B)
107506X

Tu-Flo® 750
Air Compressor
(Core Class 2B)
107507X

Optional Tu-Flo® 550 & 750 compressors available with premium crankshafts for severe duty applications. See Bendix bulletin TCH-001-054.



DDC
Core Group 1D

Tu-Flo® 550
Air Compressor
(Core Class 1D)
Series 60 non-EGR
5004188X
(69 tooth gear w/
21 tooth spline)

Tu-Flo® 750
Air Compressor
(Core Class 2D)
**Series 60 non-EGR &
Series 50**
5004187X
(69 tooth gear w/
21 tooth spline)

Bendix® BA-922® air compressor upgrade available.



DDC
Core Group 1C

Tu-Flo® 550
Air Compressor
(Core Class 1C)
Series 60 non-EGR
107622X
(21 tooth spline)

Tu-Flo® 750
Air Compressor
(Core Class 2C)
**Series 60 non-EGR &
Series 50**
107623X
(21 tooth spline)

BA-922® air compressor upgrade available.



NPT Ports

International V8
Pre-2004
Core Group 1I

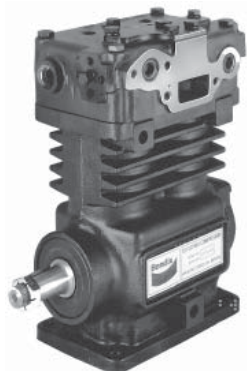
Tu-Flo® 550
Air Compressor
(Core Class 60)
T444E
107514X



International V8
2004 - 2006
Core Group 1I

Tu-Flo® 550
Air Compressor
(Core Class 60)
VT365
5015314X
(M18 water port &
M10 oil port.)

*Engines built before 6/05 may
require kit pc. no. 5016415
for oil and water port adapters
- see Bendix Bulletin
TCH-001-055.*



International V8
2007
Core Group 1I

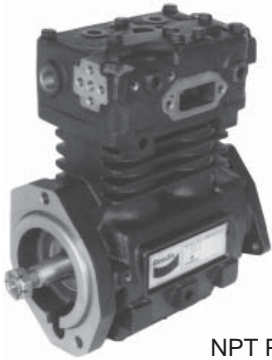
Tu-Flo® 550
Air Compressor
(Core Class 60)
VT365
5019445X
(M18 water port &
M10 oil port.)



Volvo
Core Group 1H

Tu-Flo® 550
Air Compressor
(Core Class 1H)
108937X

Tu-Flo® 750
Air Compressor
(Core Class 2H)
108935X



NPT Ports

International I-6
Pre-2004
Core Group 1G

Tu-Flo® 550
Air Compressor
(Core Class 1G)
DT466, HT530
5004613X

Tu-Flo® 750
Air Compressor
(Core Class 2G)
HT530
5004614X

Optional Tu-Flo® 550 & 750 compressors available with premium crankshafts for severe duty applications. See Bendix bulletin TCH-001-054.



Bottom drain & metric ports

International I-6
2004 - 2006
Core Group 1G

Tu-Flo® 550
Air Compressor
(Core Class 1G)
DT466
5014144X

HT570
***5014488X**

Tu-Flo® 750
Air Compressor
(Core Class 2G)
HT570
***5014489X**

* Premium crankshaft for severe duty applications.



Bottom drain & metric ports

International I-6
2007
Core Group 1G

Tu-Flo® 550
Air Compressor
(Core Class 1G)
DT466
5019320X

HT570
***5019321X**

Tu-Flo® 750
Air Compressor
(Core Class 2G)
HT570
***5019322X**

* Premium crankshaft for severe duty applications.



Mack Extended
Core Group 1F

Tu-Flo® 550
Air Compressor
(Core Class 1F)
***108866X**
(Pre -1997)
5002865X

Tu-Flo® 750
Air Compressor
(Core Class 2F)
***5003729X**
(Pre -1997)
5002868X

* Head contoured for special clearance applications.

Other Common Bendix® Compressors

Model	Piece Number	Core Class
<u>Flange Mount</u>		
BX-2150™, CAT	108223X	26
DuraFlo™ 596, CAT	5006570X	97
DuraFlo™ 596, DDC	5005875X	97
Tu-Flo® 501, CAT/Mack	108213X	14
Tu-Flo® 501, CAT/Mack	103274X	14
Tu-Flo® 700, CAT	103278X	05
Tu-Flo® 700, DDC	289925X	05
Tu-Flo® 1000, CAT	108221X	64
<u>Base Mount</u>		
Tu-Flo® 501	286528X	59
Tu-Flo® 700	289350X	61

Don't see your compressor?

Please contact your Bendix Account Representative or call
1-800-AIR BRAKE (1-800-247-2725)
to talk with our Tech Team for a service replacement.



Engine Application

Flanges	Engines	Tu-Flo® 500 Compressor	Tu-Flo® 501 Compressor	Tu-Flo® 700 Compressor	Tu-Flo® 1400 Compressor	Tu-Flo® 550 Compressor	Tu-Flo® 750 Compressor	BA-921® Compressor	BA-922® Compressor
	CAT 3406	-	286546X	289349X	-	-	-	-	-
	CAT 3406B	-	103274X	103278X	104583X	107509X	107508X	-	-
	CAT 3408	-	286552X	-	-	-	-	-	-
	CAT 3116	-	-	-	-	-	-	-	-
	CAT C11/C13	-	-	-	-	-	-	5014428X	5013058X
	CAT C15/C18	-	-	-	-	-	-	5012533X	5013059X
	Mack 6 cylinder	284662X	286544X	289340X	-	107511X	-	-	-
	Mack (other)	-	286620X	-	104584	-	107510X	-	-
	CAT 3126, C7 and C9	-	-	-	-	-	-	5010806	-
	Cummins NH, NTC, KT, KTA Series Engines (See bulletin PRO-01-2)	284718X* 284699X	286618X* 286554X	289339RX	-	107506X	107507X	-	-
	Detroit Diesel 0° Tilt	276962RX	286539X	289941X	108779X	107513X	107512X	-	-
	45° Tilt	285252X	-	101158X	-	-	-	-	-
	Series 60 0° Tilt	-	286619X❶	106780X❶	-	107622X❶	107623X❶	-	-
	Detroit Diesel	-	-	-	-	-	-	-	5013695X
	International DT466	-	-	-	-	5014144X	-	-	-
	MT530	-	-	-	-	5004613X	5004614X	-	-
	MT	-	-	-	-	5014488X	5014489X	-	-
	I-6	-	-	-	-	5019320X	5019322X	-	-
						5019321X			

❶ Series 60 Compressors must be replaced with Series 60 Compressors only. Failure to do so will result in compressor damage.

*Top Discharge - Cylinder Head

**Tu-Flo® 700 Compressor Cylinder Head incorporates both side & top discharge

Compressor Maintenance and Service Kits

	U-7 $\frac{1}{4}$ Compressor	E-12" & F-12" Compressor	BX-2150" Compressor	Tu-Flo® 300 Compressor	Tu-Flo® 400 Compressor	Tu-Flo® 500 Compressor	Tu-Flo® 501 Compressor
NUMBER OF CYLINDERS	2	2	1	2	2	2	2
FIELD MAINT. KIT	NA	NA	108848N 109356 (CAT)	229415N	229416	229417N	287043N
UNLOADER KIT	NA	NA	108847N	279613N	279614	279615N	279615N
GASKET SET	NA	NA	NA	NA	280511	280512N	101558
PISTON RING SETS (3) = 3 ring piston (4) = 4 ring piston (5) = 5 ring piston Unless otherwise indicated one piston ring set services the entire compressor.							
Standard Size	226721N	225514	104045	226778N	226721N (4) 289603N (3)	225514	106105N (5)
.010 O.S.	226722N	225515N	104046	226779	226722N (4) 289604 (3)	225515N	106106 (5)
.020 O.S.	226723N	225516N	104047	226780	226723N (4) 289605 (3)	225516N	106107 (5)
.030 O.S.	226724	225517N	104048	226781	226724 (4) 289606 (3)	225517N	106108 (5)
.040 O.S.	NA	NA	NA	NA	NA	NA	5005216
PISTON AND WRIST PIN KITS (5) = 5 ring piston * These piston and wrist pin kits have a selected fit. A set contains one piston & one pin. All other piston & wrist pin kits have a non-selected fit and each kit contains one piston, one wrist pin & two wrist pin buttons.							
Standard Size	NA	NA	104049	225704N*	289438N	289928N	106109N (5)
.010 O.S.	NA	NA	104050N	226630*	289439N	289929N	106110N (5)
.020 O.S.	NA	NA	104051	226631*	289440N	289930N	106111N (5)
.030 O.S.	NA	NA	104052	226632*	289441	289931N	106112N (5)
.040 O.S.	NA	NA	NA	NA	NA	NA	5005217
ALUMINUM CONNECTING RODS (services 1 connecting rod)							
Without Inserts	229083	NA	NA	NA	229083	NA	NA
With Std. Inserts	229082N	NA	102398RX (Std.) 107465RX (.010 O.S.) 107466RX (.020 O.S.)	227479 (Std.)	229082N	NA	NA
STEEL CONNECTING RODS (services 1 connecting rod)							
Without Inserts	NA	229085	NA	NA	NA	229085	286258
With Std. Inserts	NA	NA	NA	NA	NA	NA	286259
CONNECTING ROD INSERT KIT (services 1 connecting rod)							
Standard Size	282763N	282767N	NA	NA	282763N	282767N 287062N(M)	286254N 287058N(M)
.010 O.S.	282764N	282768N	NA	NA	282764N	282768N 287063(M)	286255N 287059N(M)
.020 O.S.	282765N	282769N	NA	NA	282765N	282769N 287064(M)	286256N 287060N(M)
.030 O.S.	282766N	282770N	NA	NA	282766N	282770N	286257N 287061N(M)
.040 O.S.	NA	NA	NA	NA	NA	NA	5005218 5005219(M)
PISTON, RINGS & CONN. ROD KIT (services the entire compressor)	NA	NA	NA	NA	NA	NA	NA
CRANKSHAFT BEARING KIT	NA	NA	NA	NA	NA	NA	NA

(M) For Mack style compressors with power steering driven by the compressor crankshaft.

NA - Not Available

See pages 6 and 7 for BA-921® and BA-922® compressor kits.



Compressor Maintenance and Service Kits

	Tu-Flo® 550 Compressor	Tu-Flo® 600 Compressor	Tu-Flo® 700 Compressor	Tu-Flo® 750 Compressor	Tu-Flo® 1000 Compressor	Tu-Flo® 1400 Compressor
NUMBER OF CYLINDERS	2	2	2	2	4	4
FIELD MAINT. KIT	107516N	229417N	289998N	107516N	229417N (2 req'd.)	104592
UNLOADER KIT	107515N	279615N	279615N	107515N	279615N (2 req'd.)	279615N (2 req'd.)
GASKET SET	NA	101559	101559	NA	NA	NA
PISTON RING SETS (3) = 3 ring piston (4) = 4 ring piston (5) = 5 ring piston Unless otherwise indicated one piston ring set services the entire compressor.						
Standard Size	107639N	282525N (5)	282525N	5005361	288646	282525N (2 req'd.)
.010 O.S.	107640	282526N (5)	282526N	5005362	288647N	282526N (2 req'd.)
.020 O.S.	107641	282527N (5)	282527N	5005363	288648	282527N (2 req'd.)
.030 O.S.	107642	282528N (5)	282528N	5005364	288649	282528N (2 req'd.)
PISTON AND WRIST PIN KITS (5) = 5 ring piston * These piston and wrist pin kits have a selected fit. A set contains one piston & one pin. All other piston & wrist pin kits have a non-selected fit and each kit contains one piston, one wrist pin & two wrist pin buttons.						
Standard Size	107647	289891N	289891N	107643	289928N	289891N
.010 O.S.	107648	289892N	289892N	107644	289929N	289892N
.020 O.S.	107649	289893	289893N	107645	289930N	289893N
.030 O.S.	107650	289894	289894N	107646	289931N	289894N
ALUMINUM CONNECTING RODS (services 1 connecting rod)						
Without Inserts	NA	NA	NA	NA	NA	NA
With Std. Inserts	NA	NA	NA	NA	NA	NA
STEEL CONNECTING RODS (services 1 connecting rod unless otherwise noted)						
Without Inserts	108841 (serv. 2)	229085	229085	108841 (serv. 2)	289029	229085
With Std. Inserts	NA	NA	NA	NA	NA	NA
CONNECTING ROD INSERT KIT (services 1 connecting rod unless otherwise noted)						
Standard Size	107651 (serv. 2)	282767N 287062N(M)	282767N	107651 (serv. 2)	282751N	282767N
.010 O.S.	107652 (serv. 2)	282768N 287063(M)	282768N 287063(M)	107652 (serv. 2)	282752N	282768N
.020 O.S.	107653 (serv. 2)	282769N 287064(M)	282769N 287064(M)	107653 (serv. 2)	282753N	282769N
.030 O.S.	107654 (serv. 2)	282770N	282770N	107654 (serv. 2)	282754N	282770N
PISTON, RINGS & CONN. ROD KIT (services the entire compressor)	108843 (std.) 5000334 (.010 O.S.) 5000333 (.020 O.S.) 5000332 (.030 O.S.)	NA	NA	108842N (std.) 5000331 (.010 O.S.) 5000330 (.020 O.S.) 5000329 (.030 O.S.)	NA	NA
CRANKSHAFT BEARING KIT	107969N	NA	NA	107969N	NA	NA

(M) For Mack style compressors with power steering driven by the compressor crankshaft.

NA - Not Available

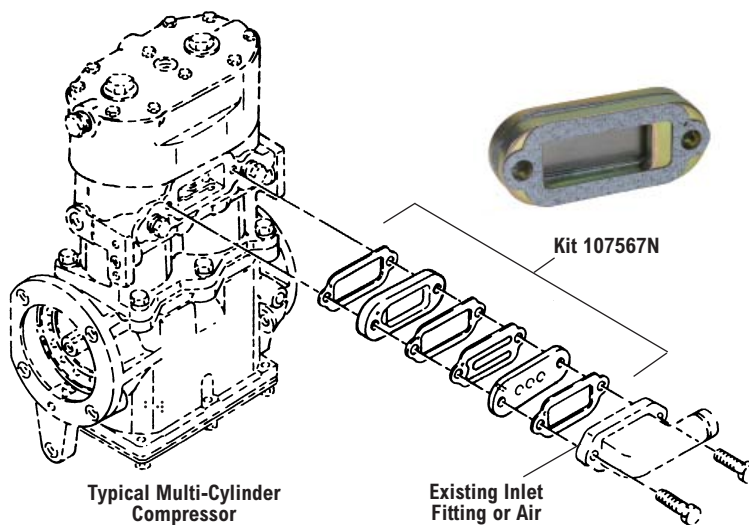
Inlet Check Valve

The inlet check valve may be used on naturally aspirated compressors to prevent oil misting during the unloaded cycle. **Do Not** use the inlet check valve if the compressor inlet is connected to the pressure side of the supercharger or turbocharger.

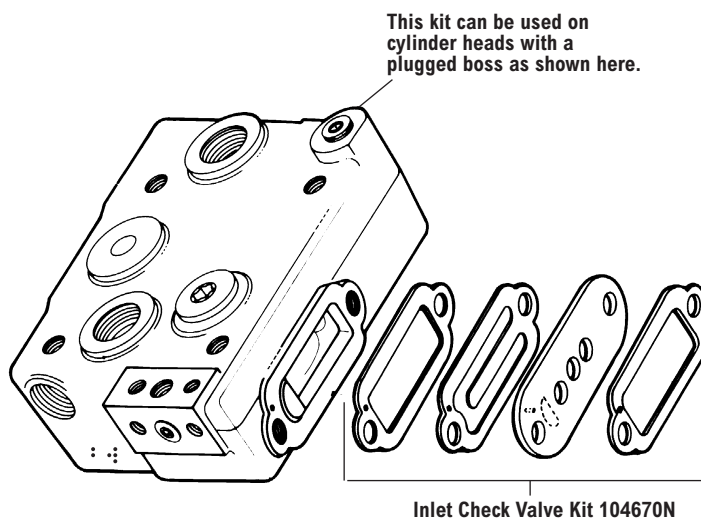
Important: *Installation of the inlet check valve assembly must be as shown in all illustrations.*

Applications & Kits

Compressor	Kit	Comments
Tu-Flo® 300 Compressor	–	Not available for Tu-Flo® 300 Compressor
Tu-Flo® 400 Compressor	107567N	
BX-2150™ Compressor	See Illustration & Notes Below	
Tu-Flo® 500 Compressor	107567N	
Tu-Flo® 501 Compressor	107567N	
Tu-Flo® 550 Compressor	107567N	
Tu-Flo® 700 Compressor	107567N	
Tu-Flo® 750 Compressor	107567N	
Tu-Flo® 1000 Compressor	107567N	Two kits required
Tu-Flo® 1400 Compressor	107567N	Two kits required



Inlet Check Valve Kit 104670N for BX-2150™ Compressor Cylinder Heads



ST-4™ Safety Valve

V.M.R.S. 13-010-073

ST-4™ Safety Valve Pc. No.	Used in Conjunction with	Pressure Setting	Thread	No. of Holes
131081		250 psi	1/2-14 NPT	2
800019		150 psi	1/2-14 NPT	2
800154		250 psi	1/2-14 NPT	2
800155		200 psi	1/4-18 NPT	1
800350	Dryer Reservoir Module	150 psi	1/4-18 NPT	1
800533		250 psi	3/4-16 UNF-2A	2
800534		250 psi	M16 x 1.5-6H	2
801116		250 psi	7/8-14 UNF-2A	2

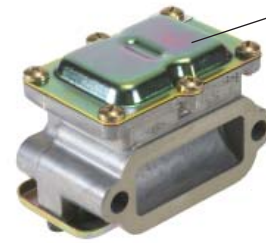


See the valve section of this catalog for additional safety valves.

Air Strainers



Replacement Filter 243009



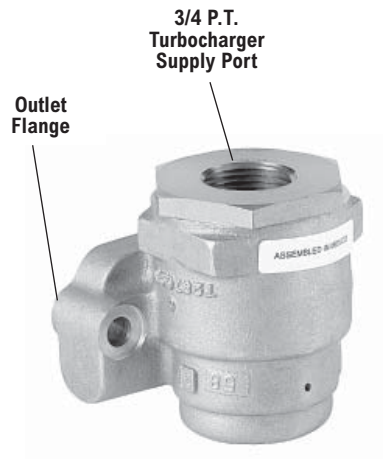
Replacement Filter 239292

Kit includes air strainer & hardware.
Can not be used on a Tu-Flo® 300 compressor.

Air Strainer Kit Pc. No.	Service New Pc. No.
278500N	279901N

Air Strainer Kit Pc. No.	Service New Pc. No.
227785N	226469N

Inlet Regulating Valve



Service New Pc. No.
104171N

Do not use on a BX-2150™ Compressor.
Can not be used on a Tu-Flo® 300 Compressor.

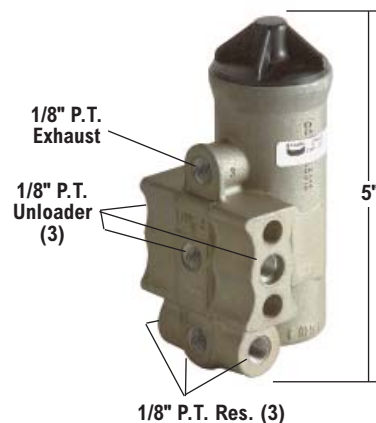
D-2® Governor

- Available Remanufactured Exchange
- Maintenance Kit With High Temperature O-Rings Pc. No. 280915
- Maintenance Kit With Standard O-Rings 276121N
- Mounting gasket 5007834
- Governor Check Valve Kit 5004049
- Operating cut-in and cut-out pressures are adjustable to O.E. equivalent pressures except non-adjustable

V.M.R.S. 13-010-018

Reman. Exch. Pc. No.	Service New Pc. No.	Pressure Range P.S.I.	Comments
-	065018	100-120	Non-Adjustable
-	275200N	90-105	-
275491RX	275491N	100-120	-
-	275508N	95-110	-
-	275530N	120-150	-
275707RX	275707N	105-125	-
-	277486N	110-130	-
-	283657N	115-135	-
284358RX	284358N	105-125	See Note 1
-	800361N	105-130	Non-Adjustable

1 Governor supplied with high temperature o-rings and waterproof cover



D-2® Governor



D-2A™ Governor
(Non-Adjustable)

Governor Maintenance Kit Contents
276121N and 280915



D-2®/SV-1™ Module

Used in conjunction with the DuraFlo 596™ Compressor.

Service New D-2®/SV-1™ Pc. No.	Type
5005365	130 PSI D-2® Governor
5007116	Standard D-2®/SV-1™ Module
5007404N	(High Temperature) w/unloader hose D-2®/SV-1™ Module
5007801	Steel Piston SV-1™ Valve

