

A photograph of an outdoor cafe or restaurant at dusk. The scene is filled with warm, glowing hanging lanterns made of wire mesh, some of which are in sharp focus while others are blurred in the background. The background shows a street with trees and buildings, suggesting an urban setting. The overall atmosphere is cozy and inviting.

HORNSEY PARK PLACE

CLARENDON
LONDON N8

Created by St William

YOUTHFUL ADVENTURES EVOKE THE SPIRIT OF LONDON

THIS IS THE PLACE TO REALISE DREAMS

YOUR SPACE TO

GROW AND EVOLVE

TO INNOVATE

MAKE AND CRAFT, NEW WORKS OF ART

OR BUILD TECH VENTURES

CAPTURE LIFELONG MEMORIES WITH FRIENDS

COME HOME WITH A **SENSE OF BELONGING**

TO YOUR URBAN RETREAT

GREEN AND SERENE

IN AN AREA REVITALISED

ALIVE WITH LIFE

CLARENDON

A NEW CITY VILLAGE WITH A PARK AT ITS HEART



Computer-generated image of Hornsey Park Place from the 11th floor overlooking Alexandra Park and Palace, indicative only and subject to change

100,000 SQ FT OF COMMERCIAL SPACE

5 ACRES OF PUBLIC OPEN SPACE

12 ACRE
NEW CITY VILLAGE

ZONE 3

A VIBRANT NEW CITY VILLAGE THAT'S HOME TO NATURE, CULTURE AND WELL-BEING.

Created by St William, Clarendon is set to become a new city village in North London. Sitting in between Hornsey, Wood Green and the expansive Alexandra Park, Clarendon will be the gateway for homeowners to build a bright future. A wealth of lifestyle and retail amenities close by, and easy access to transport links into central London, means plentiful opportunities for both businesses and entrepreneurs to flourish.

This former gasholder site identified as part of the Haringey Heartlands Opportunity Area, is being transformed into a 12 acre cultural quarter. Clarendon will deliver 1,714 suites, one, two and three-bedroom homes all with balconies, pocket parks, five acres of public green space and private courtyards.

The new Hornsey Park will be the centrepiece to Clarendon and will include orchard style planting, striking water

feature and a café. Superb residents' facilities will include* a 24-hour concierge, residents' lounge, swimming pool, spa and gymnasium.

Designed by leading architects Panter Hudspith, buildings have been shaped and inspired by the site's historic use, and the characterful detailing of the brickwork in the nearby conservation area Noel Park.

Landscape architects LDA Design has designed a tranquil landscape with rich planting that will evolve and change with the seasons and providing a variety of generous places for residents to relax, work and play.

Clarendon will create 100,000 sq ft of new commercial space designated for established retailers, cafés, bars, restaurants, start-ups and entrepreneurs to help provide growth to the local area.

The St William vision for the scheme is to create a unique and carefully considered development that places a park at the very heart of Clarendon.

Clarendon is vibrant, urban and exciting.

* Subject to planning and not available until a later phase.

08



Computer-generated image of Hornsey Park Place and the podium garden is indicative only and subject to change

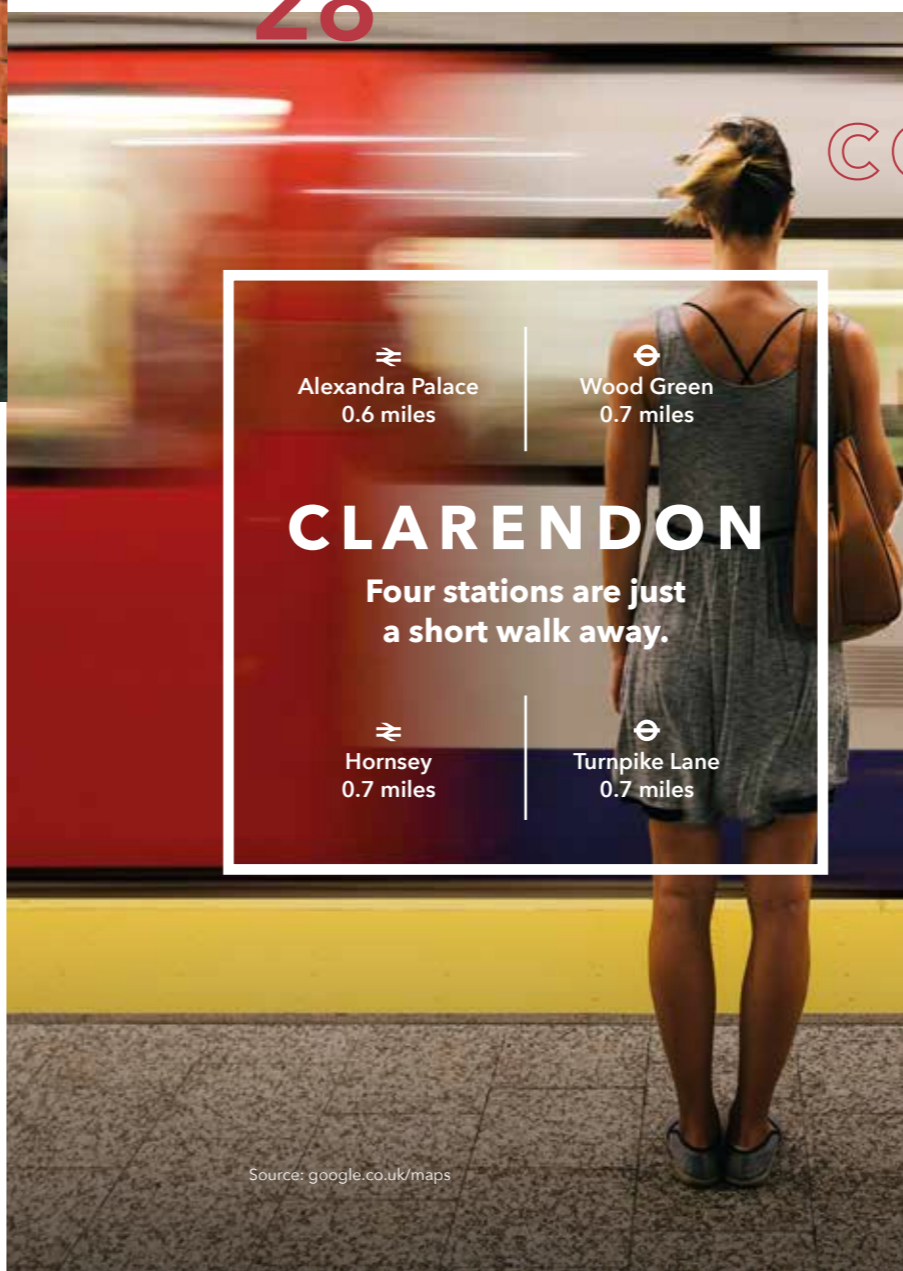
WELCOME TO CLARENDON, A 12 ACRE NEW CITY VILLAGE



Computer-generated image of Hornsey Park is indicative only and subject to planning

18

28



Alexandra Palace
0.6 miles

Wood Green
0.7 miles

CLARENDON

Four stations are just a short walk away.

Hornsey
0.7 miles

Turnpike Lane
0.7 miles

CONTENTS

40



Computer-generated image of concierge wall detail

04 – 13
A new city village
A vibrant neighbourhood with a creative mind and a green heart.

14 – 21
A place to belong
A city village retreat for residents to relax and enjoy.

22 – 29
Well connected
Four stations just a short walk away with connections to the best of London's cultural and leisure destinations.

30 – 31
Education
Easy access to world-class colleges and universities.

32 – 39
Meet the Neighbours
Innovative shops, eateries, art and fitness spaces.

40 – 43
Better Living
Residents' facilities designed to make life better.

44 – 55
A place to call home
Comfort with contemporary finishes.

56 – 59
Inside your home
Sophisticated materials and colour palettes.

60 – 61
Site Plan
A new city village.

62 – 91
Floorplates
Find your perfect home.

92 – 95
St William and the Berkeley Group
Creating places where people belong.

96
Contact details
Come and see us.

Source: google.co.uk/maps

A NEW CITY VILLAGE



THE ARCHITECT'S VIEW

"Clarendon is a fascinating project for Panter Hudspith – offering us the opportunity to transform a brownfield site into a thriving and cohesive neighbourhood, creating a new urban village in North London.

The scheme will establish a diverse place with nature and landscape at its heart, where collections of homes are set within a network of sociable public and private spaces - numerous pocket parks, Hornsey Park, Moselle Walk and a vibrant

public square come together to form a richly landscaped environment knitted into its context.

Both the layout of the scheme and the architecture have been shaped and inspired by the site's historic use, the Moselle River and the characterful detailing of the brickwork in the nearby conservation area Noel Park. When complete, the extensive work space facilities will help to nurture diverse young businesses, contributing towards a sustainable and balanced community for new and existing residents. These

spaces have been carefully integrated into the masterplan, alongside shops, bars and restaurants, flexible events spaces, crèche and gym to create a truly successful new village.

Clarendon has the combination of being a distinct location in its own right, offering easy access to great transport links whilst being just a short walk to the glorious parkland at Alexandra Palace."

Gareth Hunter,
Panter Hudspith Architects

Hornsey Park Place

GREEN SPACES, WATER
FEATURES AND A VIBRANT
PUBLIC SQUARE COME
TOGETHER TO FORM A RICHLY
LANDSCAPED ENVIRONMENT



Computer-generated image of Hornsey Park Place and the podium garden is indicative only and subject to change

**HORNSEY PARK PLACE
OCCUPIES A CENTRAL POSITION
IN CLARENDON. OVERLOOKING
HORNSEY PARK, WITH SOME
FANTASTIC ELEVATED VIEWS
OF ALEXANDRA PARK AND
CENTRAL LONDON.**

There is a choice of 169 suites, one, two and three-bedroom apartments available with a range of three interior design styles to choose from - 'Gallery', 'Park' and 'Town Square'. Each of these styles offers a unique expression of the tones and materials of the area's industrial heritage and new parkland setting.

The exterior features of Hornsey Park Place are a complementary coloured brick facade, with metal railed balconies. The building's crisp corners integrate recessed balconies providing discreet

private outside space. Residents will enjoy exclusive use of a spacious south/west facing podium garden, whilst being adjacent to the western end of Hornsey Park with its beautiful trees and water feature.

Clarendon is ideally located to explore the local area and beyond. A short stroll through the park leads up to Wood Green's high street, and the nearest train and tube stations are just a short walk away.

Hornsey Park Place is the first opportunity to enjoy living at Clarendon, a brand new city village with a park at its heart.

A NEW CITY VILLAGE

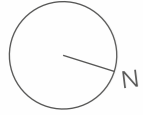
London is a city of exciting interconnected villages. London's newest city village Clarendon is set to become a vibrant neighbourhood for creative opportunities among green pockets.

Clarendon's architecture is a contemporary interpretation of London's classic brick homes, incorporating yellow and red brick and generous elongated windows.

Elegantly simple balconies, afford private spaces to enjoy. Architecturally designed brick detailing adds texture and visual coherence between buildings.



Computer-generated image of the 24-hour concierge and café at Hornsey Park Place, indicative only and subject to change



01

Hornsey Park Place

A collection of 169 suites, 1, 2 and 3-bedroom apartments.

02

Hornsey Park

Lawns framed by orchard style planting and gentle flowing water features.

03

Hornsey Park

Spacious lawns with a central water feature inspired by the gas holder heritage.

04

Hornsey Park

The largest part of the park with timber style play area set within evergreen woodland planting.

05

Moselle Walk

An informal space with wilder planting designed to connect Hornsey Park with Brook Road.

06

Public Square

A new town square with shops, bars and restaurants and space for events and farmers markets.

07

Pocket parks

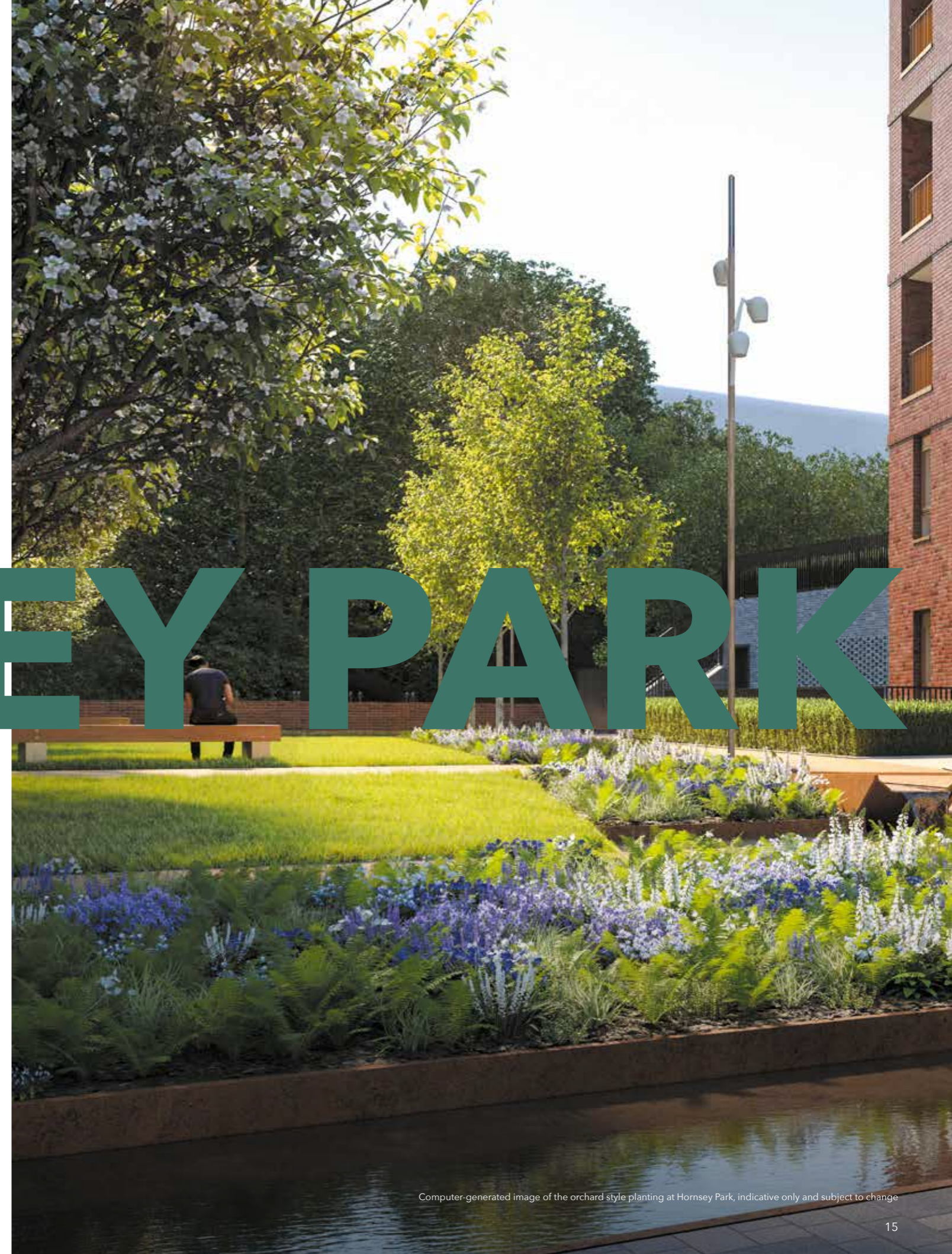
Parklets with thoughtful planting and informal seating.

For illustration purposes only, not to scale



HORNSEY PARK

**A VERDANT ONE ACRE
PARK WEAVES THROUGH
THE HEART OF CLARENDON
PROVIDING GENEROUS
GREEN SPACES TO RELAX,
PLAY AND ENJOY.**



Computer-generated image of the orchard style planting at Hornsey Park, indicative only and subject to change



THE LANDSCAPE VISION

“We wanted Clarendon residents to hear birdsong and be able to pick an apple from a tree. People will feel enveloped by the rich planting that changes with the seasons. We wanted to make it easy for people to meet up with their neighbours, and provide a tempting variety of places for play and exercise.

Our landscape-led vision makes strong connections to the authentic memory of the site and to nature, from nooks of green to new habitat for the song thrush, with planting informed by local ancient woodland.

Clarendon will be a lovely place to enjoy a lazy Sunday coffee in the mid-morning sun, or a drink at dusk by the water's edge.”

Andrew Harland,
LDA Design, Landscape Architects

**PEOPLE WILL
FEEL ENVELOPED
BY THE RICH
PLANTING THAT
CHANGES WITH
THE SEASONS.**

St William, part of the Berkeley Group, is known for rejuvenating redundant land to create places where people desire to live. Clarendon features a rich array of multiple parklets, play areas and walks with a centrepiece park. Imaginative planting includes apple trees and diverse planting found in the communal gardens.

The green spaces at Clarendon, designed by LDA Design, evolve and change with the seasons. The parkland is dotted with verdant ferns, colourful wildflowers and shady trees interspersed with winding paths.





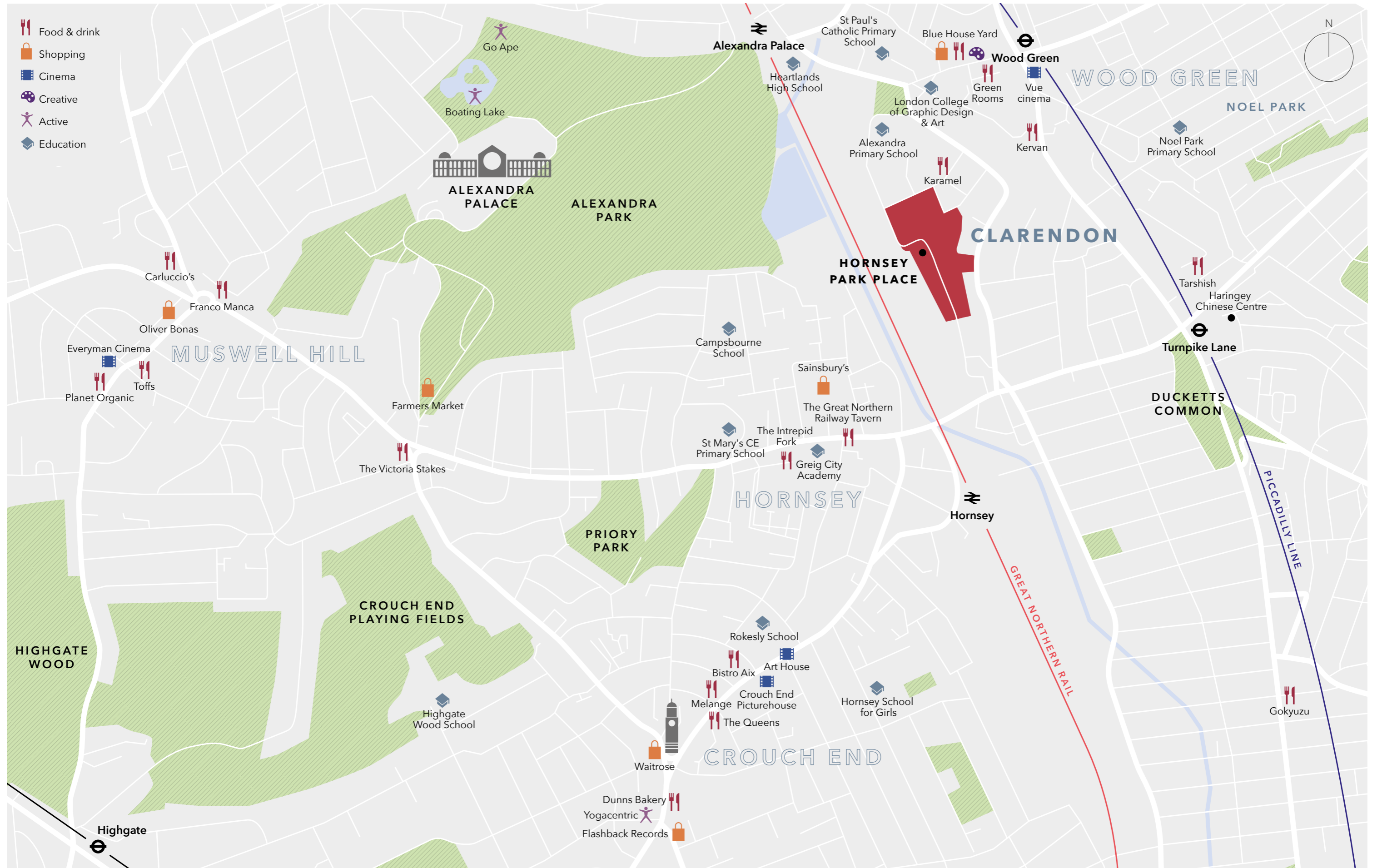
The design of Hornsey Park has drawn on the history and culture of the area to create a space that is vibrant and sociable. Part of the former gas holder has been retained to create a beautiful water feature with natural planting and walkways that connect to the decked seating area.

Computer-generated image of Hornsey Park is indicative only and subject to planning



**RESIDENTS AT HORNSEY
PARK PLACE WILL HAVE
ACCESS TO THE PODIUM,
A PRIVATE AND SPACIOUS
SOUTH/WEST-FACING
GARDEN DESIGNED FOR
RESIDENTS TO UNWIND
AND RELAX.**

Computer-generated image of Podium garden at Hornsey Park Place, indicative only and subject to change. 📶 Wi-Fi available in the podium gardens



NEXT TO 196 ACRES OF PARKLAND





The best of London's cultural and leisure destinations are within easy reach, from Old Street, Islington and King's Cross to Moorgate in the heart of the City's financial district. All less than 20 minutes away.

The City of London



01



02



03



04

- 01 Granary Square
- 02 Google headquarters, King's Cross
- 03 King's Cross railway station
- 04 The Barbican Centre
- 05 Carluccio's restaurant, Upper Street, Islington
- 06 Boxpark, Shoreditch

King's Cross has been transformed in the past five years, creating a new home for Central St Martins Fashion and Art College and a new cultural centre at King's Place. Surrounding the rejuvenated station are places to relax and discover, like the chic stores of Coal Drops Yard and great restaurants and bars around Granary Square. King's Cross St Pancras Station also boasts rapid links to continental Europe via Eurostar, and high-speed services to destinations across the UK.

From its gritty beginnings, Old Street has become the home of emerging talent in fashion, technology, design, entertainment, food and drink. Cocktail bars are hidden

down side streets and secret staircases, while luxurious bistros, global restaurants and boutiques full of cutting-edge fashion and design line the streets.

From Highbury and Islington, there are green spaces at Highbury Fields and along the New River Walk, or gigs at the famed Union Chapel, while independent stores and restaurants sit alongside bars and theatres. Meanwhile, a 20 minute train ride from Hornsey takes you to Moorgate which offers direct access to the heart of the City of London, as well as the iconic Barbican Cultural Centre, with its innovative theatre, music, art and dance programmes.





05





06



 Alexandra Palace
0.6 miles
  Wood Green
0.7 miles

CLARENDON

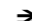



Four stations are just
a short walk away.

 Hornsey
0.7 miles
  Turnpike Lane
0.7 miles



Walk

From Hornsey Park Place

- Alexandra Park
10 mins
- |
-  Hornsey
12 mins
- |
-  Alexandra Palace
12 mins
- |
- Sainsbury's Hornsey
13 mins
- |
-  Wood Green
14 mins
- |
-  Turnpike Lane
14 mins



Bike

From Hornsey Park Place

- Alexandra Park
3 mins
- |
- Green Lanes
4 mins
- |
- Crouch End High Street
9 mins
- |
- Alexandra Palace
12 mins
- |
- Muswell Hill Broadway
14 mins
- |
- Highgate Woods
18 mins



Road




From Hornsey Park Place

- Green Lanes
5 mins
- |
- Crouch End High Street
7 mins
- |
- Muswell Hill Broadway
10 mins
- |
- Highgate Woods
11 mins
- |
- Camden Town
29 mins



Tube


Piccadilly Line
from Wood Green

-  King's Cross St Pancras
14 mins
- |
- Covent Garden
21 mins
- |
- Leicester Square
22 mins
- |
-  Farringdon
23 mins
- |
- Knightsbridge
28 mins
- |
-  Paddington
31 mins



Rail

Rail from
Hornsey

- Finsbury Park
4 mins
- |
- Highbury & Islington
10 mins
- |
-  King's Cross St Pancras
16 mins
- |
- Old Street
16 mins
- |
- Moorgate
20 mins



Air

By road from
Hornsey Park Place

- City Airport
46 mins
- |
- London Luton
52 mins
- |
- Heathrow
56 mins
- |
- London Stansted
57 mins

Source: google.co.uk/maps, tfl.gov.uk and nationalrail.co.uk



EDUCATION

Easy access to world-class colleges and universities, with University College London and London School of Economics less than 30 minutes away.

Source: google.co.uk/maps, tfl.gov.uk and nationalrail.co.uk

Higher Education

From Wood Green Underground Station

Central St Martins
20 mins

—
University College London
23 mins

—
School of Oriental and African Studies
23 mins

—
London School of Economics and Political Science
24 mins

—
Royal Academy of Arts
28 mins

—
King's College London
30 mins

—
City of Westminster College
35 mins

—
Royal Academy of Music
35 mins

—
Royal Veterinary College
36 mins

—
Imperial College London
40 mins

Secondary Education

Walking from Hornsey Park Place

Heartlands High School
Ofsted - Good
11 mins

—
Greig City Academy
Ofsted - Good
11 mins

—
Greek Secondary School of London
Ofsted - Good
17 mins

—
Octagon AP Academy
Ofsted - Good
20 mins

—
St Thomas More Catholic School
Ofsted - Outstanding
26 mins

—
Alexandra Park School
Ofsted - Outstanding
33 mins

Primary Education

Walking from Hornsey Park Place

Alexandra Primary School
Ofsted - Good
6 mins

—
St Paul's RC Primary School
Ofsted - Good
11 mins

—
North Harringay Primary School
Ofsted - Good
12 mins

—
Campsbourne Infant School
Ofsted - Good
15 mins

—
Trinity Primary Academy
Ofsted - Outstanding
16 mins

- 01 Studio spaces for artists
- 02 Street Feast
- 03 Gymnasium
- 04 Goodwin & Goodwin sign makers

MEET THE NEIGHBOURS

Innovative shops, eateries, art and fitness spaces are all just a few minutes away.

Masterminded by social entrepreneur Nick Hartwright, Clarendon Yards is North London's newest hub for culture, creativity and flavour.

Hartwright's Mill Co. helps emerging creative businesses to grow by providing affordable places for them to build their futures. Across London, Mill Co. operates 200,000 sq ft of workspace, studio and hospitality space, providing a springboard for over 150 creative businesses. Hartwright founded the Green Rooms, a hotel in Wood Green for people working in the arts, whilst elsewhere in the city he has transformed an underused Dalston community centre into a home for art and culture.



Lifestyle photography is indicative only

01



02



04



Lifestyle photography is indicative only

03

Working with St William, Mill Co. is transforming part of the former industrial land of Clarendon into a centre for innovation and culture. Clarendon Yards plans to deliver businesses such as a street food market, open-air bar, microbrewery, allotments for local residents, events and performance spaces, plus over 40,000 sq ft of maker spaces, workshops and studios for creative start-ups.

Some of the businesses already in discussion to take space at Clarendon include art development charity College Arts and CrossFit. In addition, already in situ are creative sign-makers Goodwin and Goodwin and independent book distributors Turnaround.

Clarendon Yards with its carefully chosen range of bars, restaurants, fitness and culture spaces aims to offer great experiences to everyone.



01



03



02



04

CROUCH END

A leafy neighbourhood that's refined without being pretentious, much loved by families, artists and professionals. Independent restaurants and cafés abound, along with local festivals, an arthouse cinema, delicatessens, specialist food shops and galleries.

- 01 Clock Tower
- 02 Gail's Bakery
- 03 Crouch End Picturehouse
- 04 Haberdashery Café



01



03



02



04

HORNSEY

Located just 12 minutes walk from Hornsey Park Place, Hornsey is an up-and-coming Victorian suburb with shops, bars and restaurants for every taste. From florists such as Bloomers and vintage stores such as Mishka, there is an array of neighbourhood eateries, cosy coffee shops and great pubs in this popular local suburb.

- 01 Alexandra Park
- 02 Dog Gone Fabulous
- 03 Great Northern Railway Tavern
- 04 The Intrepid Fork café



ALEXANDRA PALACE

An iconic palace with expansive views over London and surrounded by 196 acres of parkland. Home to famous firework displays, must-see gigs and fascinating events, the beloved 'Ally Pally' has been providing the best in leisure and entertainment to Londoners for 155 years.

A £26.7M RESTORATION PROGRAMME IS BREATHING NEW LIFE INTO THIS ICONIC PALACE.





01



02



03

MUSWELL HILL

A cosy enclave above the city, Muswell Hill has many charms and spectacular views towards the City. Its village atmosphere is popular with families and informs every specialist store, independent book shop, local restaurant and craft beer pub. Muswell Hill also has plenty of green spaces perfect for a quiet stroll.

- 01 Everyman Cinema
- 02 Muswell Hill Bookshop
- 03 Highgate Woods

WOOD GREEN

Home to one of the UK's longest high streets, Wood Green offers popular shops, restaurants and entertainment. Multiplex cinemas, a mall packed with favourite brands, a host of spacious gastropubs make this a down-to-earth area for quick errands or casual outings.

Over the next 10 years Wood Green is undergoing some exciting changes including improvements to the shopping mall and new cycle routes.

- 01 Basketball court
- 02 Kervan Sofrasi Restaurant
- 03 Tarshish Restaurant & Bar
- 04 The Green Rooms



01



03



02



04

BETTER LIVING

Residents' facilities at Clarendon are designed to make life easier and residents at Hornsey Park Place are perfectly positioned to enjoy the superb range of facilities on offer. The 24-hour concierge service provides answers for queries from the unusual to the everyday, while the residents' lounge offers flexible space to relax, work or entertain.

Well-being is fundamental to life at Clarendon, from the wealth of green spaces in the public parks and private gardens to the fitness offerings in future phases. These will include gyms, residents' pool and spa facilities.



THE LOBBY AREA IS
INSPIRED BY THE GAS
HOLDERS THAT ONCE
OCCUPIED THE SITE, WITH
A METAL STRUCTURE THAT
FRAMES THE RECEPTION.

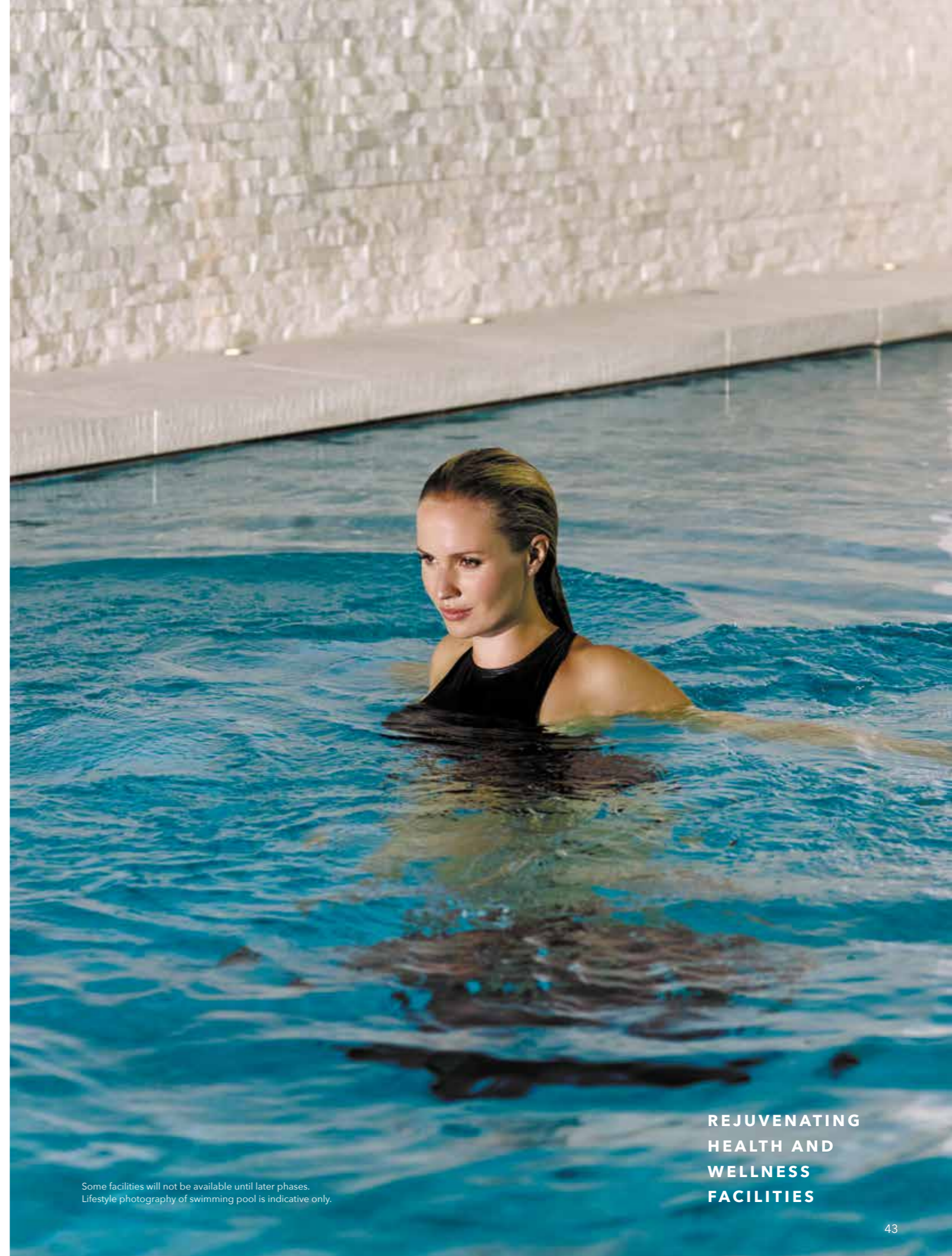
Some facilities will not be available until later phases. Computer-generated image and lifestyle photography is indicative only and subject to change



Lifestyle photography is indicative and for illustration purposes only



Some facilities will not be available until later phases.
Lifestyle photography is indicative only



Some facilities will not be available until later phases.
Lifestyle photography of swimming pool is indicative only.

**REJUVENATING
HEALTH AND
WELLNESS
FACILITIES**

While the brick exterior echoes traditional architecture, the interiors are focused on modern living. Comfort and efficiency blend with luxury touches such as geometric tiling, bespoke kitchen ironmongery and sleek kitchen cabinets. Thoughtful design has created airy bedrooms, relaxing bathrooms and social living and dining spaces, while some apartments enjoy dual aspect, with views over gardens, parklands and London's cityscape.





Computer-generated image of the Town Square kitchen is indicative only and subject to change. Specification and colour choices are subject to the build stage





Computer-generated image of the Park kitchen is indicative only and subject to change. Specification and colour choices are subject to the build stage



**GALLERY
KITCHEN**



Computer-generated image of the Gallery kitchen is indicative only and subject to change. Specification and colour choices are subject to the build stage

**GALLERY
BATHROOM**



Computer-generated image of the Gallery bathroom is indicative only and subject to change. Specification and colour choices are subject to the build stage



Computer-generated image is indicative only and subject to change

01



Computer-generated image is indicative only and subject to change

02

SPECIFICATION

KITCHEN*

Excellent specification with interior designed fitted kitchens available in three palette options**

Bespoke cupboard handles

Utensil hanging rail

Feature lighting to underside of wall units and tiled splash back between worktop and wall units

Fully integrated appliances including:

- Single oven with black glass finish (to 1 and 2 bedroom apartments only)
- Microwave oven with black glass finish (to 1 and 2 bedroom apartments only)
- Combi oven-microwave (to suites)

- Touch control induction hob with 4 zones
- Full height fridge/freezer and dishwasher
- Fully integrated extractor hood

Freestanding washer/dryer located in utility cupboard

Composite stone worktops with undermounted 1.5 bowl stainless steel sink (1 bowl sink to suites) and Hansgrohe monobloc tap

Bespoke joinery to kitchen with feature shelving units

Breakfast bar/island unit and pendant lights available as customer upgrade*

01 Suite living area
02 Two Bed Master Bedroom



01



02



03

- 01 Balcony
- 02 Timber effect flooring
- 03 Gallery bathroom wall tiles
- 04 Park bathroom

Computer-generated images are indicative only and subject to change

BATHROOM*

Tiled floor and wet walls, available in three palette options**

Feature tile to vanity splashback and one bath/shower wall**

Bespoke designed vanity unit with composite stone top

Mirrored cabinet with feature lighting

Undermounted white ceramic basin with polished chrome Hansgrohe feature tap

White WC with concealed cistern and polished chrome dual flush button

White bath with glass shower screen, Hansgrohe shower, wall mounted mixer and bath filler (where bath shown on floorplan)

White shower tray with sliding glass door, Hansgrohe shower and wall mounted mixer (where shower shown on floorplan)

Shaver socket integrated in cabinet

Chrome heated towel rail

Glass shelf to shower

Chrome toilet roll holder, robe hooks and towel bar on vanity unit

ELECTRICS/LIGHTING

Satin chrome finish to visible kitchen sockets

White switch and sockets to other locations

USB socket in bedrooms, living room and kitchen

Provision for SkyQ to the living room and master bedroom

High and low level HDMI to reception and master bedroom

High level TV point to living room and master bedroom

LED downlights to kitchen/dining/living room, bathroom/en-suite, hall and master bedroom

Pendant lights to second and third bedrooms

Provision for feature pendant lighting to kitchen breakfast bar*

Lighting to utility and coat cupboards

Video door entry system

Entrance to apartment building cores via electronic access control

Entrance to car park via electronic access control

CCTV to car park and external communal areas

WALL & FLOOR FINISHES

Off-white painted internal walls and ceilings

Timber effect flooring to hall, kitchen/living room and coat cupboard*

Tiled floor to utility cupboard

Carpet to all bedrooms*

COAT CUPBOARDS

High level shelf with hanging rail and light

WARDROBE

Fitted wardrobe to master bedrooms with sliding doors, high level shelf, hanging rail and LED strip lighting

Optional upgrade to second bedroom*

DOORS & JOINERY

Timber effect entry door and architrave with multi-point locking system, latch and spy hole

Satin white painted internal doors, skirting, and architraves

Satin stainless steel ironmongery throughout

HEATING/VENTILATION

Radiators throughout

Electric underfloor heating in bathrooms and en-suites

Communal heating system

Mechanical Extract Ventilation (MEV)

COMMUNAL AREAS

Interior designed communal areas

Movement controlled lighting to all corridors

Carpet to corridors

CUSTOMER UPGRADES

Bespoke breakfast bar/island unit to kitchen*

Pendant light over breakfast bar/island unit*

Built in wardrobe to second bedrooms*

Laminate floor finish to bedrooms*

*Where applicable and layout depending.

**Palette options are subject to the build stage at time of reservation.

Your attention is drawn to the fact that it may not be possible to provide the branded products as referred to in the specification.



04

SITE PLAN



Site map for illustration purposes only and not to scale



Computer-generated image of the concierge is indicative only and subject to change



Image depicts pool at Woodberry Down, indicative only and subject to change



Lifestyle and computer-generated images are indicative only

GROUND FLOOR AND CONCIERGE



- Lobby & 24-hour concierge
- Sales & marketing suite

Floorplans are for approximate measurements only. Measurements may vary within a tolerance of 5%. The dimensions are not intended to be used for carpet sizes, appliance sizes or items of furniture. Furniture shown is not included. Car parking space arrangement subject to change.



FLOOR 01



- Suite apartment
- One bed apartment
- Two bed apartment
- Sales & marketing suite
- Measurement points
- W Fitted wardrobe
- Optional wardrobe
- W/D Washer/dryer
- U Utility cupboard
- C Coat cupboard

Floorplans are for approximate measurements only. Measurements may vary within a tolerance of 5%. The dimensions are not intended to be used for carpet sizes, appliance sizes or items of furniture. Furniture shown is not included.



APARTMENT 12
TWO BEDROOM, TYPE 12

Living / Dining
4.59 x 4.41 m / 15'1" x 14'6"

Kitchen
2.81 x 2.25 m / 9'3" x 7'4"

Master Bedroom
3.26 x 3.04 m / 10'8" x 10'0"

Bedroom 2
2.80 x 4.64 m / 9'2" x 15'3"

Total Internal Area
72.5 sq m / 780.6 sq ft

Balcony
4.44 x 1.64 m / 14'7" x 5'5"

Total Balcony Area
7.1 sq m / 75.9 sq ft

APARTMENT 13
TWO BEDROOM, TYPE 13

Living Room
4.35 x 3.11 m / 14'3" x 10'2"

Kitchen / Dining
4.04 x 2.74 m / 13'3" x 9'0"

Master Bedroom
3.20 x 4.60 m / 10'6" x 15'1"

Bedroom 2
2.80 x 3.23 m / 9'2" x 10'7"

Total Internal Area
70.7 sq m / 760.5 sq ft

Balcony
4.25 x 1.58 m / 13'11" x 5'2"

Total Balcony Area
6.9 sq m / 74.8 sq ft

APARTMENT 14
TWO BEDROOM, TYPE 14

Living / Dining
3.91 x 4.05 m / 12'10" x 13'3"

Kitchen
3.66 x 2.20 m / 12'0" x 7'2"

Master Bedroom
2.90 x 4.48 m / 9'6" x 14'8"

Bedroom 2
3.81 x 2.74 m / 12'6" x 9'0"

Total Internal Area
70.1 sq m / 754.9 sq ft

Balcony
4.35 x 1.54 m / 14'4" x 5'1"

Total Balcony Area
6.6 sq m / 70.9 sq ft

APARTMENT 4
TWO BEDROOM, TYPE 1

Living Room
3.66 x 3.88 m / 12'0" x 12'9"

Kitchen
2.93 x 2.29 m / 9'7" x 7'6"

Master Bedroom
2.75 x 5.66 m / 9'0" x 18'7"

Bedroom 2
2.75 x 3.61 m / 9'0" x 11'10"

Total Internal Area
69.4 sq m / 747.5 sq ft

Balcony
2.95 x 2.19 m / 9'8" x 7'2"

Total Balcony Area
6.5 sq m / 69.5 sq ft

APARTMENT 5
ONE BEDROOM, TYPE 2

Living / Dining
4.35 x 3.54 m / 14'3" x 11'7"

Kitchen
3.15 x 3.54 m / 10'4" x 11'7"

Master Bedroom
4.38 x 3.06 m / 14'4" x 10'0"

Total Internal Area
52.3 sq m / 563.3 sq ft

Balcony
3.60 x 1.50 m / 11'10" x 4'11"

Total Balcony Area
5.1 sq m / 54.8 sq ft

APARTMENT 6
ONE BEDROOM, TYPE 3A

Living / Dining
4.17 x 3.87 m / 13'8" x 12'8"

Kitchen
2.17 x 3.50 m / 7'1" x 11'6"

Master Bedroom
2.85 x 5.35 m / 9'4" x 17'6"

Total Internal Area
53.1 sq m / 572.1 sq ft

Balcony
3.07 x 1.66 m / 10'1" x 5'5"

Total Balcony Area
5.0 sq m / 53.5 sq ft

APARTMENT 7
TWO BEDROOM, TYPE 7A

Living / Dining
3.46 x 4.43 m / 11'4" x 14'6"

Kitchen
2.54 x 2.80 m / 8'4" x 9'2"

Master Bedroom
2.76 x 4.87 m / 9'0" x 16'0"

Bedroom 2
2.55 x 3.32 m / 8'4" x 10'11"

Total Internal Area
65.1 sq m / 700.2 sq ft

Terrace
3.66 x 1.72 m / 12'0" x 5'7"

Total Terrace Area
6.0 sq m / 64.5 sq ft

APARTMENT 8
SUITE, TYPE 8A

Living / Dining
3.33 x 3.17 m / 10'11" x 10'5"

Kitchen
3.33 x 3.48 m / 10'11" x 11'5"

Bedroom
2.27 x 3.75 m / 7'5" x 12'4"

Total Internal Area
41.6 sq m / 447.9 sq ft

Terrace
3.61 x 1.41 m / 11'10" x 4'0"

Total Terrace Area
5.0 sq m / 53.8 sq ft

APARTMENT 9
ONE BEDROOM, TYPE 9

Living / Dining
3.73 x 4.06 m / 12'3" x 13'4"

Kitchen
3.73 x 3.40 m / 12'3" x 11'2"

Master Bedroom
3.27 x 4.31 m / 10'9" x 14'2"

Total Internal Area
54.7 sq m / 588.6 sq ft

Terrace
3.71 x 1.50 m / 12'2" x 4'11"

Total Terrace Area
5.3 sq m / 57.2 sq ft

APARTMENT 10
ONE BEDROOM, TYPE 10A

Living / Dining
4.88 x 2.88 m / 16'0" x 9'5"

Kitchen
5.20 x 2.39 m / 17'1" x 7'10"

Master Bedroom
3.27 x 6.35 m / 10'9" x 20'10"

Total Internal Area
58.9 sq m / 634.1 sq ft

Terrace
3.29 x 1.63 m / 10'9" x 5'4"

Total Terrace Area
5.1 sq m / 54.8 sq ft

APARTMENT 11
TWO BEDROOM, TYPE 11

Living Room
3.70 x 3.38 m / 12'2" x 11'1"

Kitchen / Dining
3.72 x 2.39 m / 12'2" x 7'10"

Master Bedroom
2.74 x 4.67 m / 9'0" x 15'4"

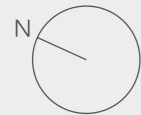
Bedroom 2
2.52 x 3.59 m / 8'3" x 11'9"

Total Internal Area
63.9 sq m / 688.1 sq ft

Terrace
2.57 x 2.54 m / 8'5" x 8'4"

Total Terrace Area
6.3 sq m / 68.2 sq ft

FLOOR 02



- ◄► Measurement points
- W Fitted wardrobe
- [W] Optional wardrobe
- W/D Washer/dryer
- U Utility cupboard
- C Coat cupboard

- Suite apartment
- One bed apartment
- Two bed apartment

Floorplans are for approximate measurements only. Measurements may vary within a tolerance of 5%. The dimensions are not intended to be used for carpet sizes, appliance sizes or items of furniture. Furniture shown is not included.



APARTMENT 15
TWO BEDROOM, TYPE 1A

Living / Dining
3.66 x 3.84 m / 12'0" x 12'7"

Kitchen
2.93 x 2.33 m / 9'7" x 7'8"

Master Bedroom
2.75 x 3.36 m / 9'0" x 11'0"

Bedroom 2
2.73 x 3.36 m / 8'11" x 11'0"

Total Internal Area
68.8 sq m / 740.3 sq ft

Balcony
2.94 x 2.19 m / 9'8" x 7'2"

Total Balcony Area
6.5 sq m / 69.5 sq ft

APARTMENT 16
ONE BEDROOM, TYPE 2A

Living / Dining
3.54 x 4.35 m / 11'7" x 14'3"

Kitchen
3.54 x 3.15 m / 11'7" x 10'4"

Master Bedroom
2.83 x 4.38 m / 9'3" x 14'4"

Total Internal Area
52.3 sq m / 563.3 sq ft

Balcony
3.60 x 1.50 m / 11'10" x 4'11"

Total Balcony Area
5.1 sq m / 54.8 sq ft

APARTMENT 17
SUITE, TYPE 3

Living / Dining
3.31 x 3.18 m / 10'10" x 10'5"

Kitchen
3.31 x 3.34 m / 10'10" x 10'11"

Bedroom
2.29 x 3.81 m / 7'6" x 12'6"

Total Internal Area
41.0 sq m / 441.9 sq ft

Balcony
3.06 x 1.66 m / 10'0" x 5'6"

Total Balcony Area
5.0 sq m / 53.5 sq ft

APARTMENT 18
ONE BEDROOM, TYPE 4

Living Room
4.05 x 3.92 m / 13'3" x 12'10"

Kitchen / Dining
4.05 x 3.10 m / 13'3" x 10'2"

Master Bedroom
3.15 x 3.71 m / 10'4" x 12'2"

Total Internal Area
51.8 sq m / 557.3 sq ft

Balcony
3.60 x 1.49 m / 11'11" x 4'10"

Total Balcony Area
5.4 sq m / 58.2 sq ft

APARTMENT 19,
TWO BEDROOM, TYPE 5

Living / Dining
3.01 x 4.70 m / 9'11" x 15'5"

Kitchen
2.16 x 3.85 m / 7'1" x 12'8"

Master Bedroom
2.98 x 4.67 m / 9'9" x 15'4"

Bedroom 2
3.29 x 3.68 m / 10'10" x 12'1"

Total Internal Area
69.5 sq m / 748.0 sq ft

Balcony
1.77 x 4.32 m / 5'10" x 14'2"

Total Balcony Area
7.3 sq m / 78.1 sq ft

APARTMENT 20
TWO BEDROOM, TYPE 6

Living Room
4.03 x 2.98 m / 13'3" x 9'9"

Kitchen / Dining
4.36 x 3.11 m / 14'4" x 10'2"

Master Bedroom
3.04 x 3.04 m / 10'0" x 10'0"

Bedroom 2
2.75 x 3.61 m / 9'0" x 11'10"

Total Internal Area
68.9 sq m / 742.0 sq ft

Balcony
3.06 x 2.21 m / 10'1" x 7'3"

Total Balcony Area
6.4 sq m / 68.4 sq ft

APARTMENT 21
TWO BEDROOM, TYPE 7

Living / Dining
3.46 x 4.43 m / 11'4" x 14'6"

Kitchen
2.54 x 2.80 m / 8'4" x 9'2"

Master Bedroom
2.76 x 4.87 m / 9'0" x 16'0"

Bedroom 2
2.55 x 3.32 m / 8'4" x 10'11"

Total Internal Area
65.1 sq m / 700.2 sq ft

Balcony
2.98 x 2.20 m / 9'9" x 7'3"

Total Balcony Area
6.3 sq m / 68.0 sq ft

APARTMENT 22
SUITE, TYPE 8

Living / Dining
3.33 x 3.17 m / 10'11" x 10'5"

Kitchen
3.33 x 3.48 m / 10'11" x 11'5"

Bedroom
2.27 x 3.75 m / 7'5" x 12'4"

Total Internal Area
41.6 sq m / 447.9 sq ft

Balcony
3.21 x 1.52 m / 10'6" x 5'0"

Total Balcony Area
5.0 sq m / 54.0 sq ft

APARTMENT 23
ONE BEDROOM, TYPE 9

Living / Dining
3.73 x 4.06 m / 12'3" x 13'4"

Kitchen
3.73 x 3.40 m / 12'3" x 11'2"

Master Bedroom
3.27 x 4.31 m / 10'9" x 14'2"

Total Internal Area
54.7 sq m / 588.6 sq ft

Balcony
3.71 x 1.50 m / 12'2" x 4'11"

Total Balcony Area
5.3 sq m / 57.2 sq ft

APARTMENT 24
TWO BEDROOM, TYPE 10

Living / Dining
4.51 x 3.50 m / 14'9" x 11'6"

Kitchen
3.60 x 2.20 m / 11'10" x 7'3"

Master Bedroom
3.43 x 3.27 m / 11'3" x 10'9"

Bedroom 2
3.67 x 2.77 m / 12'0" x 9'1"

Total Internal Area
71.7 sq m / 772.2 sq ft

Balcony
3.19 x 2.27 m / 10'6" x 7'6"

Total Balcony Area
7.3 sq m / 78.6 sq ft

APARTMENT 25
TWO BEDROOM, TYPE 11

Living Room
3.70 x 3.38 m / 12'2" x 11'1"

Kitchen / Dining
3.72 x 2.39 m / 12'2" x 7'10"

Master Bedroom
2.74 x 4.67 m / 9'0" x 15'4"

Bedroom 2
2.52 x 3.59 m / 8'3" x 11'9"

Total Internal Area
63.9 sq m / 688.1 sq ft

Balcony
2.57 x 2.54 m / 8'5" x 8'4"

Total Balcony Area
6.3 sq m / 68.2 sq ft

APARTMENT 26
TWO BEDROOM, TYPE 12A

Living / Dining
4.59 x 4.41 m / 15'1" x 14'6"

Kitchen
2.81 x 2.26 m / 9'3" x 7'5"

Master Bedroom
3.26 x 3.04 m / 10'8" x 10'0"

Bedroom 2
2.80 x 4.64 m / 9'2" x 15'3"

Total Internal Area
72.5 sq m / 780.6 sq ft

Balcony
4.44 x 1.64 m / 14'7" x 5'5"

Total Balcony Area
7.1 sq m / 75.9 sq ft

APARTMENT 27
TWO BEDROOM, TYPE 13A

Living Room
4.35 x 3.11 m / 14'3" x 10'2"

Kitchen / Dining
4.04 x 2.74 m / 13'3" x 9'0"

Master Bedroom
3.18 x 4.60 m / 10'5" x 15'1"

Bedroom 2
2.80 x 3.23 m / 9'2" x 10'7"

Total Internal Area
70.7 sq m / 760.5 sq ft

Balcony
4.25 x 1.58 m / 13'11" x 5'2"

Total Balcony Area
7.0 sq m / 75.6 sq ft

APARTMENT 28
TWO BEDROOM, TYPE 14A

Living / Dining
3.98 x 4.06 m / 13'1" x 13'4"

Kitchen
3.66 x 3.32 m / 12'0" x 10'11"

Master Bedroom
2.90 x 4.55 m / 9'6" x 14'11"

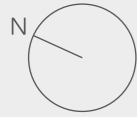
Bedroom 2
3.81 x 2.81 m / 12'6" x 9'3"

Total Internal Area
70.9 sq m / 762.8 sq ft

Balcony
4.36 x 1.54 m / 14'4" x 5'1"

Total Balcony Area
6.4 sq m / 68.4 sq ft

FLOOR 03



- ◄► Measurement points
- W Fitted wardrobe
- [W] Optional wardrobe
- W/D Washer/dryer
- U Utility cupboard
- C Coat cupboard

- Suite apartment
- One bed apartment
- Two bed apartment

Floorplans are for approximate measurements only. Measurements may vary within a tolerance of 5%. The dimensions are not intended to be used for carpet sizes, appliance sizes or items of furniture. Furniture shown is not included.



APARTMENT 29
TWO BEDROOM, TYPE 1B

Living / Dining
3.66 x 3.84 m / 12'0" x 12'7"

Kitchen
2.93 x 2.33 m / 9'7" x 7'8"

Master Bedroom
2.75 x 3.36 m / 9'0" x 11'0"

Bedroom 2
2.75 x 3.36 m / 9'0" x 11'0"

Total Internal Area
68.8 sq m / 740.3 sq ft

Balcony
2.94 x 2.19 m / 9'8" x 7'2"

Total Balcony Area
6.5 sq m / 69.5 sq ft

APARTMENT 31
SUITE, TYPE 3

Living / Dining
3.31 x 3.18 m / 10'10" x 10'5"

Kitchen
3.31 x 3.34 m / 10'10" x 10'11"

Bedroom
2.29 x 3.81 m / 7'6" x 12'6"

Total Internal Area
41.0 sq m / 441.9 sq ft

Balcony
3.06 x 1.66 m / 10'0" x 5'6"

Total Balcony Area
5.0 sq m / 53.5 sq ft

APARTMENT 30
ONE BEDROOM, TYPE 2B

Living / Dining
4.35 x 3.54 m / 14'3" x 11'7"

Kitchen
3.15 x 3.54 m / 10'4" x 11'7"

Master Bedroom
4.38 x 3.06 m / 14'4" x 10'0"

Total Internal Area
52.3 sq m / 563.3 sq ft

Balcony
3.60 x 1.50 m / 11'10" x 4'11"

Total Balcony Area
5.1 sq m / 54.8 sq ft

APARTMENT 32
ONE BEDROOM, TYPE 4

Living Room
4.05 x 3.92 m / 13'3" x 12'10"

Kitchen / Dining
4.05 x 3.10 m / 13'3" x 10'2"

Master Bedroom
3.15 x 3.71 m / 10'4" x 12'2"

Total Internal Area
51.8 sq m / 557.3 sq ft

Balcony
3.60 x 1.49 m / 11'11" x 4'10"

Total Balcony Area
5.4 sq m / 58.2 sq ft

APARTMENT 33
TWO BEDROOM, TYPE 5

Living / Dining
3.01 x 4.70 m / 9'11" x 15'5"

Kitchen
2.16 x 3.85 m / 7'1" x 12'8"

Master Bedroom
2.98 x 4.67 m / 9'9" x 15'4"

Bedroom 2
3.29 x 3.68 m / 10'10" x 12'1"

Total Internal Area
69.5 sq m / 748.0 sq ft

Balcony
1.77 x 4.32 m / 5'10" x 14'2"

Total Balcony Area
7.3 sq m / 78.1 sq ft

APARTMENT 34
TWO BEDROOM, TYPE 6

Living Room
4.03 x 2.98 m / 13'3" x 9'9"

Kitchen / Dining
4.36 x 3.11 m / 14'4" x 10'2"

Master Bedroom
3.04 x 3.04 m / 10'0" x 10'0"

Bedroom 2
2.75 x 3.61 m / 9'0" x 11'10"

Total Internal Area
68.9 sq m / 742.0 sq ft

Balcony
3.06 x 2.21 m / 10'1" x 7'3"

Total Balcony Area
6.4 sq m / 68.4 sq ft

APARTMENT 35
TWO BEDROOM, TYPE 7

Living / Dining
3.46 x 4.43 m / 11'4" x 14'6"

Kitchen
2.54 x 2.80 m / 8'4" x 9'2"

Master Bedroom
2.76 x 4.87 m / 9'0" x 16'0"

Bedroom 2
2.55 x 3.32 m / 8'4" x 10'11"

Total Internal Area
65.1 sq m / 700.2 sq ft

Balcony
2.98 x 2.20 m / 9'9" x 7'3"

Total Balcony Area
6.3 sq m / 68.0 sq ft

APARTMENT 36
SUITE, TYPE 8

Living / Dining
3.33 x 3.17 m / 10'11" x 10'5"

Kitchen
3.33 x 3.48 m / 10'11" x 11'5"

Bedroom
2.27 x 3.75 m / 7'5" x 12'4"

Total Internal Area
41.6 sq m / 447.9 sq ft

Balcony
3.21 x 1.52 m / 10'6" x 5'0"

Total Balcony Area
5.0 sq m / 54.0 sq ft

APARTMENT 37
ONE BEDROOM, TYPE 9

Living / Dining
3.73 x 4.06 m / 12'3" x 13'4"

Kitchen
3.73 x 3.40 m / 12'3" x 11'2"

Master Bedroom
3.27 x 4.31 m / 10'9" x 14'2"

Total Internal Area
54.7 sq m / 588.6 sq ft

Balcony
3.71 x 1.50 m / 12'2" x 4'11"

Total Balcony Area
5.3 sq m / 57.2 sq ft

APARTMENT 38
TWO BEDROOM, TYPE 10

Living / Dining
4.51 x 3.50 m / 14'9" x 11'6"

Kitchen
3.60 x 2.20 m / 11'10" x 7'3"

Master Bedroom
3.43 x 3.27 m / 11'3" x 10'9"

Bedroom 2
3.67 x 2.77 m / 12'0" x 9'1"

Total Internal Area
71.7 sq m / 772.2 sq ft

Balcony
3.19 x 2.27 m / 10'6" x 7'6"

Total Balcony Area
7.3 sq m / 78.6 sq ft

APARTMENT 39
TWO BEDROOM, TYPE 11

Living Room
3.70 x 3.38 m / 12'2" x 11'1"

Kitchen / Dining
3.72 x 2.39 m / 12'2" x 7'10"

Master Bedroom
2.74 x 4.67 m / 9'0" x 15'4"

Bedroom 2
2.52 x 3.59 m / 8'3" x 11'9"

Total Internal Area
63.9 sq m / 688.1 sq ft

Balcony
2.57 x 2.54 m / 8'5" x 8'4"

Total Balcony Area
6.3 sq m / 68.2 sq ft

APARTMENT 40
TWO BEDROOM, TYPE 12

Living / Dining
4.59 x 4.41 m / 15'1" x 14'6"

Kitchen
2.81 x 2.25 m / 9'3" x 7'4"

Master Bedroom
3.26 x 3.04 m / 10'8" x 10'0"

Bedroom 2
2.80 x 4.64 m / 9'2" x 15'3"

Total Internal Area
72.5 sq m / 780.6 sq ft

Balcony
4.44 x 1.64 m / 14'7" x 5'5"

Total Balcony Area
7.1 sq m / 75.9 sq ft

APARTMENT 41
TWO BEDROOM, TYPE 13

Living Room
4.35 x 3.11 m / 14'3" x 10'2"

Kitchen / Dining
4.04 x 2.74 m / 13'3" x 9'0"

Master Bedroom
3.20 x 4.60 m / 10'6" x 15'1"

Bedroom 2
2.80 x 3.23 m / 9'2" x 10'7"

Total Internal Area
70.7 sq m / 760.5 sq ft

Balcony
4.25 x 1.58 m / 13'11" x 5'2"

Total Balcony Area
6.9 sq m / 74.8 sq ft

APARTMENT 42
TWO BEDROOM, TYPE 14A

Living / Dining
3.98 x 4.06 m / 13'1" x 13'4"

Kitchen
3.66 x 3.32 m / 12'0" x 10'11"

Master Bedroom
2.90 x 4.55 m / 9'6" x 14'11"

Bedroom 2
3.81 x 2.81 m / 12'6" x 9'3"

Total Internal Area
70.9 sq m / 762.8 sq ft

Balcony
4.36 x 1.54 m / 14'4" x 5'1"

Total Balcony Area
6.4 sq m / 68.4 sq ft

FLOOR 04



- ◄► Measurement points
- W Fitted wardrobe
- [W] Optional wardrobe
- W/D Washer/dryer
- U Utility cupboard
- C Coat cupboard

- Suite apartment
- One bed apartment
- Two bed apartment

Floorplans are for approximate measurements only. Measurements may vary within a tolerance of 5%. The dimensions are not intended to be used for carpet sizes, appliance sizes or items of furniture. Furniture shown is not included.



APARTMENT 53
TWO BEDROOM, TYPE 11

Living Room
3.70 x 3.38 m / 12'2" x 11'1"

Kitchen / Dining
3.72 x 2.39 m / 12'2" x 7'10"

Master Bedroom
2.74 x 4.67 m / 9'0" x 15'4"

Bedroom 2
2.52 x 3.59 m / 8'3" x 11'9"

Total Internal Area
63.9 sq m / 688.1 sq ft

Balcony
2.57 x 2.54 m / 8'5" x 8'4"

Total Balcony Area
6.3 sq m / 68.2 sq ft

APARTMENT 54
TWO BEDROOM, TYPE 12A

Living / Dining
4.59 x 4.41 m / 15'1" x 14'6"

Kitchen
2.81 x 2.26 m / 9'3" x 7'5"

Master Bedroom
3.26 x 3.04 m / 10'8" x 10'0"

Bedroom 2
2.80 x 4.64 m / 9'2" x 15'3"

Total Internal Area
72.5 sq m / 780.6 sq ft

Balcony
4.44 x 1.64 m / 14'7" x 5'5"

Total Balcony Area
7.1 sq m / 75.9 sq ft

APARTMENT 55
TWO BEDROOM, TYPE 13A

Living Room
4.35 x 3.11 m / 14'3" x 10'2"

Kitchen / Dining
4.04 x 2.74 m / 13'3" x 9'0"

Master Bedroom
3.18 x 4.60 m / 10'5" x 15'1"

Bedroom 2
2.80 x 3.23 m / 9'2" x 10'7"

Total Internal Area
70.7 sq m / 760.5 sq ft

Balcony
4.25 x 1.58 m / 13'11" x 5'2"

Total Balcony Area
7.0 sq m / 75.6 sq ft

APARTMENT 56
TWO BEDROOM, TYPE 14A

Living / Dining
3.98 x 4.06 m / 13'1" x 13'4"

Kitchen
3.66 x 3.32 m / 12'0" x 10'11"

Master Bedroom
2.90 x 4.55 m / 9'6" x 14'11"

Bedroom 2
3.81 x 2.81 m / 12'6" x 9'3"

Total Internal Area
70.9 sq m / 762.8 sq ft

Balcony
4.36 x 1.54 m / 14'4" x 5'1"

Total Balcony Area
6.4 sq m / 68.4 sq ft

APARTMENT 49
TWO BEDROOM, TYPE 7

Living / Dining
3.46 x 4.43 m / 11'4" x 14'6"

Kitchen
2.54 x 2.80 m / 8'4" x 9'2"

Master Bedroom
2.76 x 4.87 m / 9'0" x 16'0"

Bedroom 2
2.55 x 3.32 m / 8'4" x 10'11"

Total Internal Area
65.1 sq m / 700.2 sq ft

Balcony
2.98 x 2.20 m / 9'9" x 7'3"

Total Balcony Area
6.3 sq m / 68.0 sq ft

APARTMENT 50
SUITE, TYPE 8

Living / Dining
3.33 x 3.17 m / 10'11" x 10'5"

Kitchen
3.33 x 3.48 m / 10'11" x 11'5"

Bedroom
2.27 x 3.75 m / 7'5" x 12'4"

Total Internal Area
41.6 sq m / 447.9 sq ft

Balcony
3.21 x 1.52 m / 10'6" x 5'0"

Total Balcony Area
5.0 sq m / 54.0 sq ft

APARTMENT 51
ONE BEDROOM, TYPE 9

Living / Dining
3.73 x 4.06 m / 12'3" x 13'4"

Kitchen
3.73 x 3.40 m / 12'3" x 11'2"

Master Bedroom
3.27 x 4.31 m / 10'9" x 14'2"

Total Internal Area
54.7 sq m / 588.6 sq ft

Balcony
3.71 x 1.50 m / 12'2" x 4'11"

Total Balcony Area
5.3 sq m / 57.2 sq ft

APARTMENT 52
TWO BEDROOM, TYPE 10

Living / Dining
4.51 x 3.50 m / 14'9" x 11'6"

Kitchen
3.60 x 2.20 m / 11'10" x 7'3"

Master Bedroom
3.43 x 3.27 m / 11'3" x 10'9"

Bedroom 2
3.67 x 2.77 m / 12'0" x 9'1"

Total Internal Area
71.7 sq m / 772.2 sq ft

Balcony
3.19 x 2.27 m / 10'6" x 7'6"

Total Balcony Area
7.3 sq m / 78.6 sq ft

APARTMENT 47
TWO BEDROOM, TYPE 5

Living / Dining
3.01 x 4.70 m / 9'11" x 15'5"

Kitchen
2.16 x 3.85 m / 7'1" x 12'8"

Master Bedroom
2.98 x 4.67 m / 9'9" x 15'4"

Bedroom 2
3.29 x 3.68 m / 10'10" x 12'1"

Total Internal Area
69.5 sq m / 748.0 sq ft

Balcony
1.77 x 4.32 m / 5'10" x 14'2"

Total Balcony Area
7.3 sq m / 78.1 sq ft

APARTMENT 48
TWO BEDROOM, TYPE 6

Living Room
4.03 x 2.98 m / 13'3" x 9'9"

Kitchen / Dining
4.36 x 3.11 m / 14'4" x 10'2"

Master Bedroom
3.04 x 3.04 m / 10'0" x 10'0"

Bedroom 2
2.75 x 3.61 m / 9'0" x 11'10"

Total Internal Area
68.9 sq m / 742.0 sq ft

Balcony
3.06 x 2.21 m / 10'1" x 7'3"

Total Balcony Area
6.4 sq m / 68.4 sq ft

APARTMENT 43
TWO BEDROOM, TYPE 1A

Living / Dining
3.66 x 3.84 m / 12'0" x 12'7"

Kitchen
2.93 x 2.33 m / 9'7" x 7'8"

Master Bedroom
2.75 x 3.36 m / 9'0" x 11'0"

Bedroom 2
2.73 x 3.36 m / 8'11" x 11'0"

Total Internal Area
68.8 sq m / 740.3 sq ft

Balcony
2.94 x 2.19 m / 9'8" x 7'2"

Total Balcony Area
6.5 sq m / 69.5 sq ft

APARTMENT 44
ONE BEDROOM, TYPE 2A

Living / Dining
3.54 x 4.35 m / 11'7" x 14'3"

Kitchen
3.54 x 3.15 m / 11'7" x 10'4"

Master Bedroom
2.83 x 4.38 m / 9'3" x 14'4"

Total Internal Area
52.3 sq m / 563.3 sq ft

Balcony
3.60 x 1.50 m / 11'10" x 4'11"

Total Balcony Area
5.1 sq m / 54.8 sq ft

APARTMENT 45
SUITE, TYPE 3

Living / Dining
3.31 x 3.18 m / 10'10" x 10'5"

Kitchen
3.31 x 3.34 m / 10'10" x 10'11"

Bedroom
2.29 x 3.81 m / 7'6" x 12'6"

Total Internal Area
41.0 sq m / 441.9 sq ft

Balcony
3.06 x 1.66 m / 10'0" x 5'5"

Total Balcony Area
5.0 sq m / 53.5 sq ft

APARTMENT 46
ONE BEDROOM, TYPE 4

Living Room
4.05 x 3.92 m / 13'3" x 12'10"

Kitchen / Dining
4.05 x 3.10 m / 13'3" x 10'2"

Master Bedroom
3.15 x 3.71 m / 10'4" x 12'2"

Total Internal Area
51.8 sq m / 557.3 sq ft

Balcony
3.60 x 1.49 m / 11'11" x 4'10"

Total Balcony Area
5.4 sq m / 58.2 sq ft

APARTMENT 49
TWO BEDROOM, TYPE 7

Living / Dining
3.46 x 4.43 m / 11'4" x 14'6"

Kitchen
2.54 x 2.80 m / 8'4" x 9'2"

Master Bedroom
2.76 x 4.87 m / 9'0" x 16'0"

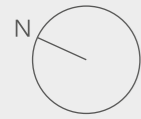
Bedroom 2
2.55 x 3.32 m / 8'4" x 10'11"

Total Internal Area
65.1 sq m / 700.2 sq ft

Balcony
2.98 x 2.20 m / 9'9" x 7'3"

Total Balcony Area
6.3 sq m / 68.0 sq ft

FLOOR 05



- ◄► Measurement points
- W Fitted wardrobe
- [W] Optional wardrobe
- W/D Washer/dryer
- U Utility cupboard
- C Coat cupboard

- Suite apartment
- One bed apartment
- Two bed apartment

Floorplans are for approximate measurements only. Measurements may vary within a tolerance of 5%. The dimensions are not intended to be used for carpet sizes, appliance sizes or items of furniture. Furniture shown is not included.



APARTMENT 57
TWO BEDROOM, TYPE 1B

Living / Dining
3.66 x 3.84 m / 12'0" x 12'7"

Kitchen
2.93 x 2.33 m / 9'7" x 7'8"

Master Bedroom
2.75 x 3.36 m / 9'0" x 11'0"

Bedroom 2
2.75 x 3.36 m / 9'0" x 11'0"

Total Internal Area
68.8 sq m / 740.3 sq ft

Balcony
2.94 x 2.19 m / 9'8" x 7'2"

Total Balcony Area
6.5 sq m / 69.5 sq ft

APARTMENT 58
ONE BEDROOM, TYPE 2B

Living / Dining
4.35 x 3.54 m / 14'3" x 11'7"

Kitchen
3.15 x 3.54 m / 10'4" x 11'7"

Master Bedroom
4.38 x 3.06 m / 14'4" x 10'0"

Total Internal Area
52.3 sq m / 563.3 sq ft

Balcony
3.60 x 1.50 m / 11'10" x 4'11"

Total Balcony Area
5.1 sq m / 54.8 sq ft

APARTMENT 59
SUITE, TYPE 3

Living / Dining
3.31 x 3.18 m / 10'10" x 10'5"

Kitchen
3.31 x 3.34 m / 10'10" x 10'11"

Bedroom
2.29 x 3.81 m / 7'6" x 12'6"

Total Internal Area
41.0 sq m / 441.9 sq ft

Balcony
3.06 x 1.66 m / 10'0" x 5'6"

Total Balcony Area
5.0 sq m / 53.5 sq ft

APARTMENT 60
ONE BEDROOM, TYPE 4

Living Room
4.05 x 3.92 m / 13'3" x 12'10"

Kitchen / Dining
4.05 x 3.10 m / 13'3" x 10'2"

Master Bedroom
3.15 x 3.71 m / 10'4" x 12'2"

Total Internal Area
51.8 sq m / 557.3 sq ft

Balcony
3.60 x 1.49 m / 11'11" x 4'10"

Total Balcony Area
5.4 sq m / 58.2 sq ft

APARTMENT 61
TWO BEDROOM, TYPE 5A

Living Room
3.30 x 4.24 m / 10'10" x 13'11"

Kitchen / Dining
3.28 x 2.24 m / 10'9" x 7'4"

Master Bedroom
2.98 x 4.88 m / 9'9" x 16'0"

Bedroom 2
3.28 x 3.85 m / 10'9" x 12'8"

Total Internal Area
70.0 sq m / 753.1 sq ft

Balcony
3.64 x 1.87 m / 11'11" x 6'2"

Total Balcony Area
6.6 sq m / 70.5 sq ft

APARTMENT 62
TWO BEDROOM, TYPE 6

Living Room
4.03 x 2.98 m / 13'3" x 9'9"

Kitchen / Dining
4.36 x 3.11 m / 14'4" x 10'2"

Master Bedroom
3.04 x 3.04 m / 10'0" x 10'0"

Bedroom 2
2.75 x 3.61 m / 9'0" x 11'10"

Total Internal Area
68.9 sq m / 742.0 sq ft

Balcony
3.06 x 2.21 m / 10'1" x 7'3"

Total Balcony Area
6.4 sq m / 68.4 sq ft

APARTMENT 63
TWO BEDROOM, TYPE 7

Living / Dining
3.46 x 4.43 m / 11'4" x 14'6"

Kitchen
2.54 x 2.80 m / 8'4" x 9'2"

Master Bedroom
2.76 x 4.87 m / 9'0" x 16'0"

Bedroom 2
2.55 x 3.32 m / 8'4" x 10'11"

Total Internal Area
65.1 sq m / 700.2 sq ft

Balcony
2.98 x 2.20 m / 9'9" x 7'3"

Total Balcony Area
6.3 sq m / 68.0 sq ft

APARTMENT 64
SUITE, TYPE 8

Living / Dining
3.33 x 3.17 m / 10'11" x 10'5"

Kitchen
3.33 x 3.48 m / 10'11" x 11'5"

Bedroom
2.27 x 3.75 m / 7'5" x 12'4"

Total Internal Area
41.6 sq m / 447.9 sq ft

Balcony
3.21 x 1.52 m / 10'6" x 5'0"

Total Balcony Area
5.0 sq m / 54.0 sq ft

APARTMENT 65
ONE BEDROOM, TYPE 9

Living / Dining
3.73 x 4.06 m / 12'3" x 13'4"

Kitchen
3.73 x 3.40 m / 12'3" x 11'2"

Master Bedroom
3.27 x 4.31 m / 10'9" x 14'2"

Total Internal Area
54.7 sq m / 588.6 sq ft

Balcony
3.71 x 1.50 m / 12'2" x 4'11"

Total Balcony Area
5.3 sq m / 57.2 sq ft

APARTMENT 66
TWO BEDROOM, TYPE 10

Living / Dining
4.51 x 3.50 m / 14'9" x 11'6"

Kitchen
3.60 x 2.20 m / 11'10" x 7'3"

Master Bedroom
3.43 x 3.27 m / 11'3" x 10'9"

Bedroom 2
3.67 x 2.77 m / 12'0" x 9'1"

Total Internal Area
71.7 sq m / 772.2 sq ft

Balcony
3.19 x 2.27 m / 10'6" x 7'6"

Total Balcony Area
7.3 sq m / 78.6 sq ft

APARTMENT 67
TWO BEDROOM, TYPE 11

Living Room
3.70 x 3.38 m / 12'2" x 11'1"

Kitchen / Dining
3.72 x 2.39 m / 12'2" x 7'10"

Master Bedroom
2.74 x 4.67 m / 9'0" x 15'4"

Bedroom 2
2.52 x 3.59 m / 8'3" x 11'9"

Total Internal Area
63.9 sq m / 688.1 sq ft

Balcony
2.57 x 2.54 m / 8'5" x 8'4"

Total Balcony Area
6.3 sq m / 68.2 sq ft

APARTMENT 68
TWO BEDROOM, TYPE 23

Living / Dining
3.30 x 4.26 m / 10'10" x 14'0"

Kitchen
3.08 x 2.88 m / 10'1" x 9'5"

Master Bedroom
3.01 x 3.04 m / 9'10" x 10'0"

Bedroom 2
3.33 x 3.69 m / 10'11" x 12'1"

Total Internal Area
72.8 sq m / 783.5 sq ft

Balcony
1.53 x 4.54 m / 5'0" x 14'11"

Total Balcony Area
6.7 sq m / 72.1 sq ft

APARTMENT 69
TWO BEDROOM, TYPE 24

Living Room
4.35 x 3.26 m / 14'3" x 10'8"

Kitchen / Dining
4.04 x 2.59 m / 13'3" x 8'6"

Master Bedroom
3.00 x 4.90 m / 9'10" x 16'1"

Bedroom 2
3.00 x 3.53 m / 9'10" x 11'7"

Total Internal Area
70.7 sq m / 760.6 sq ft

Balcony
1.66 x 4.32 m / 5'5" x 14'2"

Total Balcony Area
7.0 sq m / 75.6 sq ft

APARTMENT 70
TWO BEDROOM, TYPE 14A

Living / Dining
3.98 x 4.06 m / 13'1" x 13'4"

Kitchen
3.66 x 3.32 m / 12'0" x 10'11"

Master Bedroom
2.90 x 4.55 m / 9'6" x 14'11"

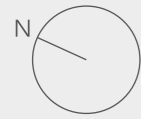
Bedroom 2
3.81 x 2.81 m / 12'6" x 9'3"

Total Internal Area
70.9 sq m / 762.8 sq ft

Balcony
4.36 x 1.54 m / 14'4" x 5'1"

Total Balcony Area
6.4 sq m / 68.4 sq ft

FLOOR 06



- ◄► Measurement points
- W Fitted wardrobe
- [W] Optional wardrobe
- W/D Washer/dryer
- U Utility cupboard
- C Coat cupboard

Floorplans are for approximate measurements only. Measurements may vary within a tolerance of 5%. The dimensions are not intended to be used for carpet sizes, appliance sizes or items of furniture. Furniture shown is not included.



APARTMENT 81
TWO BEDROOM, TYPE 11

Living Room	3.70 x 3.38 m / 12'2" x 11'1"
Kitchen / Dining	3.72 x 2.39 m / 12'2" x 7'10"
Master Bedroom	2.74 x 4.67 m / 9'0" x 15'4"
Bedroom 2	2.52 x 3.59 m / 8'3" x 11'9"
Total Internal Area	63.9 sq m / 688.1 sq ft
Balcony	2.57 x 2.54 m / 8'5" x 8'4"
Total Balcony Area	6.3 sq m / 68.2 sq ft

APARTMENT 82
TWO BEDROOM, TYPE 23A

Living Room	3.33 x 4.26 m / 10'11" x 14'0"
Kitchen	3.05 x 2.87 m / 10'0" x 9'5"
Master Bedroom	3.01 x 3.04 m / 9'10" x 10'0"
Bedroom 2	3.33 x 3.69 m / 10'11" x 12'1"
Total Internal Area	72.8 sq m / 783.5 sq ft
Balcony	1.53 x 4.54 m / 5'0" x 14'11"
Total Balcony Area	6.7 sq m / 72.1 sq ft

APARTMENT 83
TWO BEDROOM, TYPE 24A

Living Room	4.35 x 3.29 m / 14'3" x 10'9"
Kitchen / Dining	4.04 x 2.58 m / 13'3" x 8'6"
Master Bedroom	3.00 x 4.90 m / 9'10" x 16'1"
Bedroom 2	3.00 x 3.53 m / 9'10" x 11'7"
Total Internal Area	70.7 sq m / 760.6 sq ft
Balcony	1.66 x 4.32 m / 5'5" x 14'2"
Total Balcony Area	7.0 sq m / 75.6 sq ft

APARTMENT 84
TWO BEDROOM, TYPE 14A

Living / Dining	3.98 x 4.06 m / 13'1" x 13'4"
Kitchen	3.66 x 3.32 m / 12'0" x 10'11"
Master Bedroom	2.90 x 4.55 m / 9'6" x 14'11"
Bedroom 2	3.81 x 2.81 m / 12'6" x 9'3"
Total Internal Area	70.9 sq m / 762.8 sq ft
Balcony	4.36 x 1.54 m / 14'4" x 5'1"
Total Balcony Area	6.4 sq m / 68.4 sq ft

APARTMENT 77
TWO BEDROOM, TYPE 7

Living / Dining	3.46 x 4.43 m / 11'4" x 14'6"
Kitchen	2.54 x 2.80 m / 8'4" x 9'2"
Master Bedroom	2.76 x 4.87 m / 9'0" x 16'0"
Bedroom 2	2.55 x 3.32 m / 8'4" x 10'11"
Total Internal Area	65.1 sq m / 700.2 sq ft
Balcony	2.98 x 2.20 m / 9'9" x 7'3"
Total Balcony Area	6.3 sq m / 68.0 sq ft

APARTMENT 78
SUITE, TYPE 8

Living / Dining	3.33 x 3.17 m / 10'11" x 10'5"
Kitchen	3.33 x 3.48 m / 10'11" x 11'5"
Bedroom	2.27 x 3.75 m / 7'5" x 12'4"
Total Internal Area	41.6 sq m / 447.9 sq ft
Balcony	3.21 x 1.52 m / 10'6" x 5'0"
Total Balcony Area	5.0 sq m / 54.0 sq ft

APARTMENT 79
ONE BEDROOM, TYPE 9

Living / Dining	3.73 x 4.06 m / 12'3" x 13'4"
Kitchen	3.73 x 3.40 m / 12'3" x 11'2"
Master Bedroom	3.27 x 4.31 m / 10'9" x 14'2"
Total Internal Area	54.7 sq m / 588.6 sq ft
Balcony	3.71 x 1.50 m / 12'2" x 4'11"
Total Balcony Area	5.3 sq m / 57.2 sq ft

APARTMENT 80
TWO BEDROOM, TYPE 10

Living / Dining	4.51 x 3.50 m / 14'9" x 11'6"
Kitchen	3.60 x 2.20 m / 11'10" x 7'3"
Master Bedroom	3.43 x 3.27 m / 11'3" x 10'9"
Bedroom 2	3.67 x 2.77 m / 12'0" x 9'1"
Total Internal Area	71.7 sq m / 772.2 sq ft
Balcony	3.19 x 2.27 m / 10'6" x 7'6"
Total Balcony Area	7.3 sq m / 78.6 sq ft

APARTMENT 75
TWO BEDROOM, TYPE 5A

Living Room	3.30 x 4.24 m / 10'10" x 13'11"
Kitchen / Dining	3.28 x 2.24 m / 10'9" x 7'4"
Master Bedroom	2.98 x 4.88 m / 9'9" x 16'0"
Bedroom 2	3.28 x 3.85 m / 10'9" x 12'8"
Total Internal Area	70.0 sq m / 753.1 sq ft
Balcony	3.64 x 1.87 m / 11'11" x 6'2"
Total Balcony Area	6.6 sq m / 70.5 sq ft

APARTMENT 76
TWO BEDROOM, TYPE 6

Living Room	4.03 x 2.98 m / 13'3" x 9'9"
Kitchen / Dining	4.36 x 3.11 m / 14'4" x 10'2"
Master Bedroom	3.04 x 3.04 m / 10'0" x 10'0"
Bedroom 2	2.75 x 3.61 m / 9'0" x 11'10"
Total Internal Area	68.9 sq m / 742.0 sq ft
Balcony	3.06 x 2.21 m / 10'1" x 7'3"
Total Balcony Area	6.4 sq m / 68.4 sq ft

APARTMENT 71
TWO BEDROOM, TYPE 1A

Living / Dining	3.66 x 3.84 m / 12'0" x 12'7"
Kitchen	2.93 x 2.33 m / 9'7" x 7'8"
Master Bedroom	2.75 x 3.36 m / 9'0" x 11'0"
Bedroom 2	2.73 x 3.36 m / 8'11" x 11'0"
Total Internal Area	68.8 sq m / 740.3 sq ft
Balcony	2.94 x 2.19 m / 9'8" x 7'2"
Total Balcony Area	6.5 sq m / 69.5 sq ft

APARTMENT 72
ONE BEDROOM, TYPE 2A

Living / Dining	3.54 x 4.35 m / 11'7" x 14'3"
Kitchen	3.54 x 3.15 m / 11'7" x 10'4"
Master Bedroom	2.83 x 4.38 m / 9'3" x 14'4"
Total Internal Area	52.3 sq m / 563.3 sq ft
Balcony	3.60 x 1.50 m / 11'10" x 4'11"
Total Balcony Area	5.1 sq m / 54.8 sq ft

APARTMENT 73
SUITE, TYPE 3

Living / Dining	3.31 x 3.18 m / 10'10" x 10'5"
Kitchen	3.31 x 3.34 m / 10'10" x 10'11"
Bedroom	2.29 x 3.81 m / 7'6" x 12'6"
Total Internal Area	41.0 sq m / 441.9 sq ft
Balcony	3.06 x 1.66 m / 10'0" x 5'6"
Total Balcony Area	5.0 sq m / 53.5 sq ft

APARTMENT 74
ONE BEDROOM, TYPE 4

Living Room	4.05 x 3.92 m / 13'3" x 12'10"
Kitchen / Dining	4.05 x 3.10 m / 13'3" x 10'2"
Master Bedroom	3.15 x 3.71 m / 10'4" x 12'2"
Total Internal Area	51.8 sq m / 557.3 sq ft
Balcony	3.60 x 1.49 m / 11'11" x 4'10"
Total Balcony Area	5.4 sq m / 58.2 sq ft

FLOOR 07



96

97

98

85

86

87

88

89

93

92

91

90

94

95

- Suite apartment
- One bed apartment
- Two bed apartment

- ◄► Measurement points
- W Fitted wardrobe
- [W] Optional wardrobe
- W/D Washer/dryer
- U Utility cupboard
- C Coat cupboard

Floorplans are for approximate measurements only. Measurements may vary within a tolerance of 5%. The dimensions are not intended to be used for carpet sizes, appliance sizes or items of furniture. Furniture shown is not included.



APARTMENT 85
TWO BEDROOM, TYPE 1B

Living / Dining
3.66 x 3.84 m / 12'0" x 12'7"

Kitchen
2.93 x 2.33 m / 9'7" x 7'8"

Master Bedroom
2.75 x 3.36 m / 9'0" x 11'0"

Bedroom 2
2.75 x 3.36 m / 9'0" x 11'0"

Total Internal Area
68.8 sq m / 740.3 sq ft

Balcony
2.94 x 2.19 m / 9'8" x 7'2"

Total Balcony Area
6.5 sq m / 69.5 sq ft

APARTMENT 86
ONE BEDROOM, TYPE 2B

Living / Dining
4.35 x 3.54 m / 14'3" x 11'7"

Kitchen
3.15 x 3.54 m / 10'4" x 11'7"

Master Bedroom
4.38 x 3.06 m / 14'4" x 10'0"

Total Internal Area
52.3 sq m / 563.3 sq ft

Balcony
3.60 x 1.50 m / 11'10" x 4'11"

Total Balcony Area
5.1 sq m / 54.8 sq ft

APARTMENT 87
SUITE, TYPE 3

Living / Dining
3.31 x 3.18 m / 10'10" x 10'5"

Kitchen
3.31 x 3.34 m / 10'10" x 10'11"

Bedroom
2.29 x 3.81 m / 7'6" x 12'6"

Total Internal Area
41.0 sq m / 441.9 sq ft

Balcony
3.06 x 1.66 m / 10'0" x 5'6"

Total Balcony Area
5.0 sq m / 53.5 sq ft

APARTMENT 88
ONE BEDROOM, TYPE 4

Living Room
4.05 x 3.92 m / 13'3" x 12'10"

Kitchen / Dining
4.05 x 3.10 m / 13'3" x 10'2"

Master Bedroom
3.15 x 3.71 m / 10'4" x 12'2"

Total Internal Area
51.8 sq m / 557.3 sq ft

Balcony
3.60 x 1.49 m / 11'11" x 4'10"

Total Balcony Area
5.4 sq m / 58.2 sq ft

APARTMENT 89
TWO BEDROOM, TYPE 5A

Living Room
3.30 x 4.24 m / 10'10" x 13'11"

Kitchen / Dining
3.28 x 2.24 m / 10'9" x 7'4"

Master Bedroom
2.98 x 4.88 m / 9'9" x 16'0"

Bedroom 2
3.28 x 3.85 m / 10'9" x 12'8"

Total Internal Area
70.0 sq m / 753.1 sq ft

Balcony
3.64 x 1.87 m / 11'11" x 6'2"

Total Balcony Area
6.6 sq m / 70.5 sq ft

APARTMENT 90
TWO BEDROOM, TYPE 6

Living Room
4.03 x 2.98 m / 13'3" x 9'9"

Kitchen / Dining
4.36 x 3.11 m / 14'4" x 10'2"

Master Bedroom
3.04 x 3.04 m / 10'0" x 10'0"

Bedroom 2
2.75 x 3.61 m / 9'0" x 11'10"

Total Internal Area
68.9 sq m / 742.0 sq ft

Balcony
3.06 x 2.21 m / 10'1" x 7'3"

Total Balcony Area
6.4 sq m / 68.4 sq ft

APARTMENT 91
TWO BEDROOM, TYPE 7

Living / Dining
3.46 x 4.43 m / 11'4" x 14'6"

Kitchen
2.54 x 2.80 m / 8'4" x 9'2"

Master Bedroom
2.76 x 4.87 m / 9'0" x 16'0"

Bedroom 2
2.55 x 3.32 m / 8'4" x 10'11"

Total Internal Area
65.1 sq m / 700.2 sq ft

Balcony
2.98 x 2.20 m / 9'9" x 7'3"

Total Balcony Area
6.3 sq m / 68.0 sq ft

APARTMENT 92
SUITE, TYPE 8

Living / Dining
3.33 x 3.17 m / 10'11" x 10'5"

Kitchen
3.33 x 3.48 m / 10'11" x 11'5"

Bedroom
2.27 x 3.75 m / 7'5" x 12'4"

Total Internal Area
41.6 sq m / 447.9 sq ft

Balcony
3.21 x 1.52 m / 10'6" x 5'0"

Total Balcony Area
5.0 sq m / 54.0 sq ft

APARTMENT 93
ONE BEDROOM, TYPE 9

Living / Dining
3.73 x 4.06 m / 12'3" x 13'4"

Kitchen
3.73 x 3.40 m / 12'3" x 11'2"

Master Bedroom
3.27 x 4.31 m / 10'9" x 14'2"

Total Internal Area
54.7 sq m / 588.6 sq ft

Balcony
3.71 x 1.50 m / 12'2" x 4'11"

Total Balcony Area
5.3 sq m / 57.2 sq ft

APARTMENT 94
TWO BEDROOM, TYPE 10

Living / Dining
4.51 x 3.50 m / 14'9" x 11'6"

Kitchen
3.60 x 2.20 m / 11'10" x 7'3"

Master Bedroom
3.43 x 3.27 m / 11'3" x 10'9"

Bedroom 2
3.67 x 2.77 m / 12'0" x 9'1"

Total Internal Area
71.7 sq m / 772.2 sq ft

Balcony
3.19 x 2.27 m / 10'6" x 7'6"

Total Balcony Area
7.3 sq m / 78.6 sq ft

APARTMENT 95
TWO BEDROOM, TYPE 11

Living Room
3.70 x 3.38 m / 12'2" x 11'1"

Kitchen / Dining
3.72 x 2.39 m / 12'2" x 7'10"

Master Bedroom
2.74 x 4.67 m / 9'0" x 15'4"

Bedroom 2
2.52 x 3.59 m / 8'3" x 11'9"

Total Internal Area
63.9 sq m / 688.1 sq ft

Balcony
2.57 x 2.54 m / 8'5" x 8'4"

Total Balcony Area
6.3 sq m / 68.2 sq ft

APARTMENT 96
TWO BEDROOM, TYPE 23

Living / Dining
3.30 x 4.26 m / 10'10" x 14'0"

Kitchen
3.08 x 2.88 m / 10'1" x 9'5"

Master Bedroom
3.01 x 3.04 m / 9'10" x 10'0"

Bedroom 2
3.33 x 3.69 m / 10'11" x 12'1"

Total Internal Area
72.8 sq m / 783.5 sq ft

Balcony
1.53 x 4.54 m / 5'0" x 14'11"

Total Balcony Area
6.7 sq m / 72.1 sq ft

APARTMENT 97
TWO BEDROOM, TYPE 24

Living Room
4.35 x 3.26 m / 14'3" x 10'8"

Kitchen / Dining
4.04 x 2.59 m / 13'3" x 8'6"

Master Bedroom
3.00 x 4.90 m / 9'10" x 16'1"

Bedroom 2
3.00 x 3.53 m / 9'10" x 11'7"

Total Internal Area
70.7 sq m / 760.6 sq ft

Balcony
1.66 x 4.32 m / 5'5" x 14'2"

Total Balcony Area
7.0 sq m / 75.6 sq ft

APARTMENT 98
TWO BEDROOM, TYPE 14A

Living / Dining
3.98 x 4.06 m / 13'1" x 13'4"

Kitchen
3.66 x 3.32 m / 12'0" x 10'11"

Master Bedroom
2.90 x 4.55 m / 9'6" x 14'11"

Bedroom 2
3.81 x 2.81 m / 12'6" x 9'3"

Total Internal Area
70.9 sq m / 762.8 sq ft

Balcony
4.36 x 1.54 m / 14'4" x 5'1"

Total Balcony Area
6.4 sq m / 68.4 sq ft

FLOOR 08



110

111

112

99

100

101

102

103

107

106

105

104

108

109

- ◄► Measurement points
- W Fitted wardrobe
- [W] Optional wardrobe
- W/D Washer/dryer
- U Utility cupboard
- C Coat cupboard

- Suite apartment
- One bed apartment
- Two bed apartment



Floorplans are for approximate measurements only. Measurements may vary within a tolerance of 5%. The dimensions are not intended to be used for carpet sizes, appliance sizes or items of furniture. Furniture shown is not included.

**APARTMENT 109
TWO BEDROOM, TYPE 11**

Living Room	3.70 x 3.38 m / 12'2" x 11'1"
Kitchen / Dining	3.72 x 2.39 m / 12'2" x 7'10"
Master Bedroom	2.74 x 4.67 m / 9'0" x 15'4"
Bedroom 2	2.52 x 3.59 m / 8'3" x 11'9"
Total Internal Area	63.9 sq m / 688.1 sq ft
Balcony	2.57 x 2.54 m / 8'5" x 8'4"
Total Balcony Area	6.3 sq m / 68.2 sq ft

**APARTMENT 110
TWO BEDROOM, TYPE 23A**

Living Room	3.33 x 4.26 m / 10'11" x 14'0"
Kitchen	3.05 x 2.87 m / 10'0" x 9'5"
Master Bedroom	3.01 x 3.04 m / 9'10" x 10'0"
Bedroom 2	3.33 x 3.69 m / 10'11" x 12'1"
Total Internal Area	72.8 sq m / 783.5 sq ft
Balcony	1.53 x 4.54 m / 5'0" x 14'11"
Total Balcony Area	6.7 sq m / 72.1 sq ft

**APARTMENT 111
TWO BEDROOM, TYPE 24A**

Living Room	4.35 x 3.29 m / 14'3" x 10'9"
Kitchen / Dining	4.04 x 2.58 m / 13'3" x 8'6"
Master Bedroom	3.00 x 4.90 m / 9'10" x 16'1"
Bedroom 2	3.00 x 3.53 m / 9'10" x 11'7"
Total Internal Area	70.7 sq m / 760.6 sq ft
Balcony	1.66 x 4.32 m / 5'5" x 14'2"
Total Balcony Area	7.0 sq m / 75.6 sq ft

**APARTMENT 112
TWO BEDROOM, TYPE 14A**

Living / Dining	3.98 x 4.06 m / 13'1" x 13'4"
Kitchen	3.66 x 3.32 m / 12'0" x 10'11"
Master Bedroom	2.90 x 4.55 m / 9'6" x 14'11"
Bedroom 2	3.81 x 2.81 m / 12'6" x 9'3"
Total Internal Area	70.9 sq m / 762.8 sq ft
Balcony	4.36 x 1.54 m / 14'4" x 5'1"
Total Balcony Area	6.4 sq m / 68.4 sq ft

**APARTMENT 105
TWO BEDROOM, TYPE 7**

Living / Dining	3.46 x 4.43 m / 11'4" x 14'6"
Kitchen	2.54 x 2.80 m / 8'4" x 9'2"
Master Bedroom	2.76 x 4.87 m / 9'0" x 16'0"
Bedroom 2	2.55 x 3.32 m / 8'4" x 10'11"
Total Internal Area	65.1 sq m / 700.2 sq ft
Balcony	2.98 x 2.20 m / 9'9" x 7'3"
Total Balcony Area	6.3 sq m / 68.0 sq ft

**APARTMENT 106
SUITE, TYPE 8**

Living / Dining	3.33 x 3.17 m / 10'11" x 10'5"
Kitchen	3.33 x 3.48 m / 10'11" x 11'5"
Bedroom	2.27 x 3.75 m / 7'5" x 12'4"
Total Internal Area	41.6 sq m / 447.9 sq ft
Balcony	3.21 x 1.52 m / 10'6" x 5'0"
Total Balcony Area	5.0 sq m / 54.0 sq ft

**APARTMENT 103
TWO BEDROOM, TYPE 5A**

Living Room	3.30 x 4.24 m / 10'10" x 13'11"
Kitchen / Dining	3.28 x 2.24 m / 10'9" x 7'4"
Master Bedroom	2.98 x 4.88 m / 9'9" x 16'0"
Bedroom 2	3.28 x 3.85 m / 10'9" x 12'8"
Total Internal Area	70.0 sq m / 753.1 sq ft
Balcony	3.64 x 1.87 m / 11'11" x 6'2"
Total Balcony Area	6.6 sq m / 70.5 sq ft

**APARTMENT 104
TWO BEDROOM, TYPE 6**

Living Room	4.03 x 2.98 m / 13'3" x 9'9"
Kitchen / Dining	4.36 x 3.11 m / 14'4" x 10'2"
Master Bedroom	3.04 x 3.04 m / 10'0" x 10'0"
Bedroom 2	2.75 x 3.61 m / 9'0" x 11'10"
Total Internal Area	68.9 sq m / 742.0 sq ft
Balcony	3.06 x 2.21 m / 10'1" x 7'3"
Total Balcony Area	6.4 sq m / 68.4 sq ft

**APARTMENT 99
TWO BEDROOM, TYPE 1A**

Living / Dining	3.66 x 3.84 m / 12'0" x 12'7"
Kitchen	2.93 x 2.33 m / 9'7" x 7'8"
Master Bedroom	2.75 x 3.36 m / 9'0" x 11'0"
Bedroom 2	2.73 x 3.36 m / 8'11" x 11'0"
Total Internal Area	68.8 sq m / 740.3 sq ft
Balcony	2.94 x 2.19 m / 9'8" x 7'2"
Total Balcony Area	6.5 sq m / 69.5 sq ft

**APARTMENT 100
ONE BEDROOM, TYPE 2A**

Living / Dining	3.54 x 4.35 m / 11'7" x 14'3"
Kitchen	3.54 x 3.15 m / 11'7" x 10'4"
Master Bedroom	2.83 x 4.38 m / 9'3" x 14'4"
Total Internal Area	52.3 sq m / 563.3 sq ft
Balcony	3.60 x 1.50 m / 11'10" x 4'11"
Total Balcony Area	5.1 sq m / 54.8 sq ft

**APARTMENT 101
SUITE, TYPE 3**

Living / Dining	3.31 x 3.18 m / 10'10" x 10'5"
Kitchen	3.31 x 3.34 m / 10'10" x 10'11"
Bedroom	2.29 x 3.81 m / 7'6" x 12'6"
Total Internal Area	41.0 sq m / 441.9 sq ft
Balcony	3.06 x 1.66 m / 10'0" x 5'5"
Total Balcony Area	5.0 sq m / 53.5 sq ft

**APARTMENT 102
ONE BEDROOM, TYPE 4**

Living Room	4.05 x 3.92 m / 13'3" x 12'10"
Kitchen / Dining	4.05 x 3.10 m / 13'3" x 10'2"
Master Bedroom	3.15 x 3.71 m / 10'4" x 12'2"
Total Internal Area	51.8 sq m / 557.3 sq ft
Balcony	3.60 x 1.49 m / 11'11" x 4'10"
Total Balcony Area	5.4 sq m / 58.2 sq ft

**APARTMENT 107
ONE BEDROOM, TYPE 9**

Living / Dining	3.73 x 4.06 m / 12'3" x 13'4"
Kitchen	3.73 x 3.40 m / 12'3" x 11'2"
Master Bedroom	3.27 x 4.31 m / 10'9" x 14'2"
Total Internal Area	54.7 sq m / 588.6 sq ft
Balcony	3.71 x 1.50 m / 12'2" x 4'11"
Total Balcony Area	5.3 sq m / 57.2 sq ft

FLOOR 09



- ◄► Measurement points
- W Fitted wardrobe
- [W] Optional wardrobe
- W/D Washer/dryer
- U Utility cupboard
- C Coat cupboard

- Suite apartment
- One bed apartment
- Two bed apartment

Floorplans are for approximate measurements only. Measurements may vary within a tolerance of 5%. The dimensions are not intended to be used for carpet sizes, appliance sizes or items of furniture. Furniture shown is not included.



APARTMENT 123
TWO BEDROOM, TYPE 11

- Living Room
3.70 x 3.38 m / 12'2" x 11'1"
- Kitchen / Dining
3.72 x 2.39 m / 12'2" x 7'10"
- Master Bedroom
2.74 x 4.67 m / 9'0" x 15'4"
- Bedroom 2
2.52 x 3.59 m / 8'3" x 11'9"
- Total Internal Area**
63.9 sq m / 688.1 sq ft
- Balcony
2.57 x 2.54 m / 8'5" x 8'4"
- Total Balcony Area**
6.3 sq m / 68.2 sq ft

APARTMENT 124
TWO BEDROOM, TYPE 23

- Living / Dining
3.30 x 4.26 m / 10'10" x 14'0"
- Kitchen
3.08 x 2.88 m / 10'1" x 9'5"
- Master Bedroom
3.01 x 3.04 m / 9'10" x 10'0"
- Bedroom 2
3.33 x 3.69 m / 10'11" x 12'1"
- Total Internal Area**
72.8 sq m / 783.5 sq ft
- Balcony
1.53 x 4.54 m / 5'0" x 14'11"
- Total Balcony Area**
6.7 sq m / 72.1 sq ft

APARTMENT 125
TWO BEDROOM, TYPE 24

- Living Room
4.35 x 3.26 m / 14'3" x 10'8"
- Kitchen / Dining
4.04 x 2.59 m / 13'3" x 8'6"
- Master Bedroom
3.00 x 4.90 m / 9'10" x 16'1"
- Bedroom 2
3.00 x 3.53 m / 9'10" x 11'7"
- Total Internal Area**
70.7 sq m / 760.6 sq ft
- Balcony
1.66 x 4.32 m / 5'5" x 14'2"
- Total Balcony Area**
7.0 sq m / 75.6 sq ft

APARTMENT 126
TWO BEDROOM, TYPE 14A

- Living / Dining
3.98 x 4.06 m / 13'1" x 13'4"
- Kitchen
3.66 x 3.32 m / 12'0" x 10'11"
- Master Bedroom
2.90 x 4.55 m / 9'6" x 14'11"
- Bedroom 2
3.81 x 2.81 m / 12'6" x 9'3"
- Total Internal Area**
70.9 sq m / 762.8 sq ft
- Balcony
4.36 x 1.54 m / 14'4" x 5'1"
- Total Balcony Area**
6.4 sq m / 68.4 sq ft

APARTMENT 119
TWO BEDROOM, TYPE 7

- Living / Dining
3.46 x 4.43 m / 11'4" x 14'6"
- Kitchen
2.54 x 2.80 m / 8'4" x 9'2"
- Master Bedroom
2.76 x 4.87 m / 9'0" x 16'0"
- Bedroom 2
2.55 x 3.32 m / 8'4" x 10'11"
- Total Internal Area**
65.1 sq m / 700.2 sq ft
- Balcony
2.98 x 2.20 m / 9'9" x 7'3"
- Total Balcony Area**
6.3 sq m / 68.0 sq ft

APARTMENT 120
SUITE, TYPE 8

- Living / Dining
3.33 x 3.17 m / 10'11" x 10'5"
- Kitchen
3.33 x 3.48 m / 10'11" x 11'5"
- Bedroom
2.27 x 3.75 m / 7'5" x 12'4"
- Total Internal Area**
41.6 sq m / 447.9 sq ft
- Balcony
3.21 x 1.52 m / 10'6" x 5'0"
- Total Balcony Area**
5.0 sq m / 54.0 sq ft

APARTMENT 121
ONE BEDROOM, TYPE 9

- Living / Dining
3.73 x 4.06 m / 12'3" x 13'4"
- Kitchen
3.73 x 3.40 m / 12'3" x 11'2"
- Master Bedroom
3.27 x 4.31 m / 10'9" x 14'2"
- Total Internal Area**
54.7 sq m / 588.6 sq ft
- Balcony
3.71 x 1.50 m / 12'2" x 4'11"
- Total Balcony Area**
5.3 sq m / 57.2 sq ft

APARTMENT 122
TWO BEDROOM, TYPE 10

- Living / Dining
4.51 x 3.50 m / 14'9" x 11'6"
- Kitchen
3.60 x 2.20 m / 11'10" x 7'3"
- Master Bedroom
3.43 x 3.27 m / 11'3" x 10'9"
- Bedroom 2
3.67 x 2.77 m / 12'0" x 9'1"
- Total Internal Area**
71.7 sq m / 772.2 sq ft
- Balcony
3.19 x 2.27 m / 10'6" x 7'6"
- Total Balcony Area**
7.3 sq m / 78.6 sq ft

APARTMENT 117
TWO BEDROOM, TYPE 5A

- Living Room
3.30 x 4.24 m / 10'10" x 13'11"
- Kitchen / Dining
3.28 x 2.24 m / 10'9" x 7'4"
- Master Bedroom
2.98 x 4.88 m / 9'9" x 16'0"
- Bedroom 2
3.28 x 3.85 m / 10'9" x 12'8"
- Total Internal Area**
70.0 sq m / 753.1 sq ft
- Balcony
3.64 x 1.87 m / 11'11" x 6'2"
- Total Balcony Area**
6.6 sq m / 70.5 sq ft

APARTMENT 118
TWO BEDROOM, TYPE 6

- Living Room
4.03 x 2.98 m / 13'3" x 9'9"
- Kitchen / Dining
4.36 x 3.11 m / 14'4" x 10'2"
- Master Bedroom
3.04 x 3.04 m / 10'0" x 10'0"
- Bedroom 2
2.75 x 3.61 m / 9'0" x 11'10"
- Total Internal Area**
68.9 sq m / 742.0 sq ft
- Balcony
3.06 x 2.21 m / 10'1" x 7'3"
- Total Balcony Area**
6.4 sq m / 68.4 sq ft

APARTMENT 113
TWO BEDROOM, TYPE 1B

- Living / Dining
3.66 x 3.84 m / 12'0" x 12'7"
- Kitchen
2.93 x 2.33 m / 9'7" x 7'8"
- Master Bedroom
2.75 x 3.36 m / 9'0" x 11'0"
- Bedroom 2
2.75 x 3.36 m / 9'0" x 11'0"
- Total Internal Area**
68.8 sq m / 740.3 sq ft
- Balcony
2.94 x 2.19 m / 9'8" x 7'2"
- Total Balcony Area**
6.5 sq m / 69.5 sq ft

APARTMENT 114,
ONE BEDROOM, TYPE 2B

- Living / Dining
4.35 x 3.54 m / 14'3" x 11'7"
- Kitchen
3.15 x 3.54 m / 10'4" x 11'7"
- Master Bedroom
4.38 x 3.06 m / 14'4" x 10'0"
- Total Internal Area**
52.3 sq m / 563.3 sq ft
- Balcony
3.60 x 1.50 m / 11'10" x 4'11"
- Total Balcony Area**
5.1 sq m / 54.8 sq ft

APARTMENT 115
SUITE, TYPE 3

- Living / Dining
3.31 x 3.18 m / 10'10" x 10'5"
- Kitchen
3.31 x 3.34 m / 10'10" x 10'11"
- Bedroom
2.29 x 3.81 m / 7'6" x 12'6"
- Total Internal Area**
41.0 sq m / 441.9 sq ft
- Balcony
3.06 x 1.66 m / 10'0" x 5'6"
- Total Balcony Area**
5.0 sq m / 53.5 sq ft

APARTMENT 116
ONE BEDROOM, TYPE 4

- Living Room
4.05 x 3.92 m / 13'3" x 12'10"
- Kitchen / Dining
4.05 x 3.10 m / 13'3" x 10'2"
- Master Bedroom
3.15 x 3.71 m / 10'4" x 12'2"
- Total Internal Area**
51.8 sq m / 557.3 sq ft
- Balcony
3.60 x 1.49 m / 11'11" x 4'10"
- Total Balcony Area**
5.4 sq m / 58.2 sq ft

FLOOR 10



- ◄► Measurement points
- W Fitted wardrobe
- [W] Optional wardrobe
- W/D Washer/dryer
- U Utility cupboard
- C Coat cupboard

Floorplans are for approximate measurements only. Measurements may vary within a tolerance of 5%. The dimensions are not intended to be used for carpet sizes, appliance sizes or items of furniture. Furniture shown is not included.



APARTMENT 137
TWO BEDROOM, TYPE 11

Living Room	3.70 x 3.38 m / 12'2" x 11'1"
Kitchen / Dining	3.72 x 2.39 m / 12'2" x 7'10"
Master Bedroom	2.74 x 4.67 m / 9'0" x 15'4"
Bedroom 2	2.52 x 3.59 m / 8'3" x 11'9"
Total Internal Area	63.9 sq m / 688.1 sq ft
Balcony	2.57 x 2.54 m / 8'5" x 8'4"
Total Balcony Area	6.3 sq m / 68.2 sq ft

APARTMENT 138
TWO BEDROOM, TYPE 23A

Living Room	3.33 x 4.26 m / 10'11" x 14'0"
Kitchen	3.05 x 2.87 m / 10'0" x 9'5"
Master Bedroom	3.01 x 3.04 m / 9'10" x 10'0"
Bedroom 2	3.33 x 3.69 m / 10'11" x 12'1"
Total Internal Area	72.8 sq m / 783.5 sq ft
Balcony	1.53 x 4.54 m / 5'0" x 14'11"
Total Balcony Area	6.7 sq m / 72.1 sq ft

APARTMENT 139
TWO BEDROOM, TYPE 24A

Living Room	4.35 x 3.29 m / 14'3" x 10'9"
Kitchen / Dining	4.04 x 2.58 m / 13'3" x 8'6"
Master Bedroom	3.00 x 4.90 m / 9'10" x 16'1"
Bedroom 2	3.00 x 3.53 m / 9'10" x 11'7"
Total Internal Area	70.7 sq m / 760.6 sq ft
Balcony	1.66 x 4.32 m / 5'5" x 14'2"
Total Balcony Area	7.0 sq m / 75.6 sq ft

APARTMENT 140
TWO BEDROOM, TYPE 14A

Living / Dining	3.98 x 4.06 m / 13'1" x 13'4"
Kitchen	3.66 x 3.32 m / 12'0" x 10'11"
Master Bedroom	2.90 x 4.55 m / 9'6" x 14'11"
Bedroom 2	3.81 x 2.81 m / 12'6" x 9'3"
Total Internal Area	70.9 sq m / 762.8 sq ft
Balcony	4.36 x 1.54 m / 14'4" x 5'1"
Total Balcony Area	6.4 sq m / 68.4 sq ft

APARTMENT 133
TWO BEDROOM, TYPE 7

Living / Dining	3.46 x 4.43 m / 11'4" x 14'6"
Kitchen	2.54 x 2.80 m / 8'4" x 9'2"
Master Bedroom	2.76 x 4.87 m / 9'0" x 16'0"
Bedroom 2	2.55 x 3.32 m / 8'4" x 10'11"
Total Internal Area	65.1 sq m / 700.2 sq ft
Balcony	2.98 x 2.20 m / 9'9" x 7'3"
Total Balcony Area	6.3 sq m / 68.0 sq ft

APARTMENT 134
SUITE, TYPE 8

Living / Dining	3.33 x 3.17 m / 10'11" x 10'5"
Kitchen	3.33 x 3.48 m / 10'11" x 11'5"
Bedroom	2.27 x 3.75 m / 7'5" x 12'4"
Total Internal Area	41.6 sq m / 447.9 sq ft
Balcony	3.21 x 1.52 m / 10'6" x 5'0"
Total Balcony Area	5.0 sq m / 54.0 sq ft

APARTMENT 131
TWO BEDROOM, TYPE 5B

Living Room	3.35 x 4.24 m / 11'0" x 13'11"
Kitchen / Dining	2.97 x 2.24 m / 9'9" x 7'4"
Master Bedroom	2.98 x 4.67 m / 9'9" x 15'4"
Bedroom 2	3.23 x 3.85 m / 10'7" x 12'8"
Total Internal Area	69.1 sq m / 743.4 sq ft
Balcony	3.64 x 1.87 m / 11'11" x 6'2"
Total Balcony Area	6.6 sq m / 70.5 sq ft

APARTMENT 132
TWO BEDROOM, TYPE 6

Living Room	4.03 x 2.98 m / 13'3" x 9'9"
Kitchen / Dining	4.36 x 3.11 m / 14'4" x 10'2"
Master Bedroom	3.04 x 3.04 m / 10'0" x 10'0"
Bedroom 2	2.75 x 3.61 m / 9'0" x 11'10"
Total Internal Area	68.9 sq m / 742.0 sq ft
Balcony	3.06 x 2.21 m / 10'1" x 7'3"
Total Balcony Area	6.4 sq m / 68.4 sq ft

APARTMENT 127
TWO BEDROOM, TYPE 1A

Living / Dining	3.66 x 3.84 m / 12'0" x 12'7"
Kitchen	2.93 x 2.33 m / 9'7" x 7'8"
Master Bedroom	2.75 x 3.36 m / 9'0" x 11'0"
Bedroom 2	2.73 x 3.36 m / 8'11" x 11'0"
Total Internal Area	68.8 sq m / 740.3 sq ft
Balcony	2.94 x 2.19 m / 9'8" x 7'2"
Total Balcony Area	6.5 sq m / 69.5 sq ft

APARTMENT 128
ONE BEDROOM, TYPE 2A

Living / Dining	3.54 x 4.35 m / 11'7" x 14'3"
Kitchen	3.54 x 3.15 m / 11'7" x 10'4"
Master Bedroom	2.83 x 4.38 m / 9'3" x 14'4"
Total Internal Area	52.3 sq m / 563.3 sq ft
Balcony	3.60 x 1.50 m / 11'10" x 4'11"
Total Balcony Area	5.1 sq m / 54.8 sq ft

APARTMENT 129
SUITE, TYPE 3

Living / Dining	3.31 x 3.18 m / 10'10" x 10'5"
Kitchen	3.31 x 3.34 m / 10'10" x 10'11"
Bedroom	2.29 x 3.81 m / 7'6" x 12'6"
Total Internal Area	41.0 sq m / 441.9 sq ft
Balcony	3.06 x 1.66 m / 10'0" x 5'6"
Total Balcony Area	5.0 sq m / 53.5 sq ft

APARTMENT 130
ONE BEDROOM, TYPE 4

Living Room	4.05 x 3.92 m / 13'3" x 12'10"
Kitchen / Dining	4.05 x 3.10 m / 13'3" x 10'2"
Master Bedroom	3.15 x 3.71 m / 10'4" x 12'2"
Total Internal Area	51.8 sq m / 557.3 sq ft
Balcony	3.60 x 1.49 m / 11'11" x 4'10"
Total Balcony Area	5.4 sq m / 58.2 sq ft

APARTMENT 135
ONE BEDROOM, TYPE 9

Living / Dining	3.73 x 4.06 m / 12'3" x 13'4"
Kitchen	3.73 x 3.40 m / 12'3" x 11'2"
Master Bedroom	3.27 x 4.31 m / 10'9" x 14'2"
Total Internal Area	54.7 sq m / 588.6 sq ft
Balcony	3.71 x 1.50 m / 12'2" x 4'11"
Total Balcony Area	5.3 sq m / 57.2 sq ft

FLOOR 11



- ◄► Measurement points
- W Fitted wardrobe
- [W] Optional wardrobe
- W/D Washer/dryer
- U Utility cupboard
- C Coat cupboard

- Suite apartment
- One bed apartment
- Two bed apartment

Floorplans are for approximate measurements only. Measurements may vary within a tolerance of 5%. The dimensions are not intended to be used for carpet sizes, appliance sizes or items of furniture. Furniture shown is not included.



APARTMENT 148
TWO BEDROOM, TYPE 11

- Living Room
3.70 x 3.38 m / 12'2" x 11'1"
- Kitchen / Dining
3.72 x 2.39 m / 12'2" x 7'10"
- Master Bedroom
2.74 x 4.67 m / 9'0" x 15'4"
- Bedroom 2
2.52 x 3.59 m / 8'3" x 11'9"
- Total Internal Area**
63.9 sq m / 688.1 sq ft
- Balcony
2.57 x 2.54 m / 8'5" x 8'4"
- Total Balcony Area**
6.3 sq m / 68.2 sq ft

APARTMENT 149
TWO BEDROOM, TYPE 23

- Living / Dining
3.30 x 4.26 m / 10'10" x 14'0"
- Kitchen
3.08 x 2.88 m / 10'1" x 9'5"
- Master Bedroom
3.01 x 3.04 m / 9'10" x 10'0"
- Bedroom 2
3.33 x 3.69 m / 10'11" x 12'1"
- Total Internal Area**
72.8 sq m / 783.5 sq ft
- Balcony
1.53 x 4.54 m / 5'0" x 14'11"
- Total Balcony Area**
6.7 sq m / 72.1 sq ft

APARTMENT 145
SUITE, TYPE 8

- Living / Dining
3.33 x 3.17 m / 10'11" x 10'5"
- Kitchen
3.33 x 3.48 m / 10'11" x 11'5"
- Bedroom
2.27 x 3.75 m / 7'5" x 12'4"
- Total Internal Area**
41.6 sq m / 447.9 sq ft
- Balcony
3.21 x 1.52 m / 10'6" x 5'0"
- Total Balcony Area**
5.0 sq m / 54.0 sq ft

APARTMENT 150
TWO BEDROOM, TYPE 24

- Living Room
4.35 x 3.26 m / 14'3" x 10'8"
- Kitchen / Dining
4.04 x 2.59 m / 13'3" x 8'6"
- Master Bedroom
3.00 x 4.90 m / 9'10" x 16'1"
- Bedroom 2
3.00 x 3.53 m / 9'10" x 11'7"
- Total Internal Area**
70.7 sq m / 760.6 sq ft
- Balcony
1.66 x 4.32 m / 5'5" x 14'2"
- Total Balcony Area**
7.0 sq m / 75.6 sq ft

APARTMENT 146
ONE BEDROOM, TYPE 9

- Living / Dining
3.73 x 4.06 m / 12'3" x 13'4"
- Kitchen
3.73 x 3.40 m / 12'3" x 11'2"
- Master Bedroom
3.27 x 4.31 m / 10'9" x 14'2"
- Total Internal Area**
54.7 sq m / 588.6 sq ft
- Balcony
3.71 x 1.50 m / 12'2" x 4'11"
- Total Balcony Area**
5.3 sq m / 57.2 sq ft

APARTMENT 147
TWO BEDROOM, TYPE 10

- Living / Dining
4.51 x 3.50 m / 14'9" x 11'6"
- Kitchen
3.60 x 2.20 m / 11'10" x 7'3"
- Master Bedroom
3.43 x 3.27 m / 11'3" x 10'9"
- Bedroom 2
3.67 x 2.77 m / 12'0" x 9'1"
- Total Internal Area**
71.7 sq m / 772.2 sq ft
- Balcony
3.19 x 2.27 m / 10'6" x 7'6"
- Total Balcony Area**
7.3 sq m / 78.6 sq ft

APARTMENT 151
TWO BEDROOM, TYPE 14A

- Living / Dining
3.98 x 4.06 m / 13'1" x 13'4"
- Kitchen
3.66 x 3.32 m / 12'0" x 10'11"
- Master Bedroom
2.90 x 4.55 m / 9'6" x 14'11"
- Bedroom 2
3.81 x 2.81 m / 12'6" x 9'3"
- Total Internal Area**
70.9 sq m / 762.8 sq ft
- Balcony
4.36 x 1.54 m / 14'4" x 5'1"
- Total Balcony Area**
6.4 sq m / 68.4 sq ft

APARTMENT 141
TWO BEDROOM, TYPE 1B

- Living / Dining
3.66 x 3.84 m / 12'0" x 12'7"
- Kitchen
2.93 x 2.33 m / 9'7" x 7'8"
- Master Bedroom
2.75 x 3.36 m / 9'0" x 11'0"
- Bedroom 2
2.75 x 3.36 m / 9'0" x 11'0"
- Total Internal Area**
68.8 sq m / 740.3 sq ft
- Balcony
2.94 x 2.19 m / 9'8" x 7'2"
- Total Balcony Area**
6.5 sq m / 69.5 sq ft

APARTMENT 142
ONE BEDROOM, TYPE 2B

- Living / Dining
4.35 x 3.54 m / 14'3" x 11'7"
- Kitchen
3.15 x 3.54 m / 10'4" x 11'7"
- Master Bedroom
4.38 x 3.06 m / 14'4" x 10'0"
- Total Internal Area**
52.3 sq m / 563.3 sq ft
- Balcony
3.60 x 1.50 m / 11'10" x 4'11"
- Total Balcony Area**
5.1 sq m / 54.8 sq ft

APARTMENT 143
TWO BEDROOM, TYPE 15

- Living / Dining
4.60 x 3.61 m / 15'1" x 11'10"
- Kitchen
2.92 x 2.83 m / 9'7" x 9'3"
- Master Bedroom
3.07 x 3.93 m / 10'1" x 12'11"
- Bedroom 2
4.33 x 2.77 m / 14'2" x 9'1"
- Total Internal Area**
73.1 sq m / 786.4 sq ft
- Terrace
2.79 x 5.61 m / 9'1" x 18'4"
- Total Terrace Area**
20.5 sq m / 220.6 sq ft

APARTMENT 144
ONE BEDROOM, TYPE 16

- Living / Dining
4.64 x 4.28 m / 15'3" x 14'1"
- Kitchen
4.38 x 1.95 m / 14'4" x 6'5"
- Master Bedroom
4.46 x 2.80 m / 14'8" x 9'2"
- Total Internal Area**
58.5 sq m / 629.6 sq ft
- Terrace
4.24 x 6.84 m / 13'11" x 22'5"
- Total Terrace Area**
27.8 sq m / 299.2 sq ft

FLOOR 12



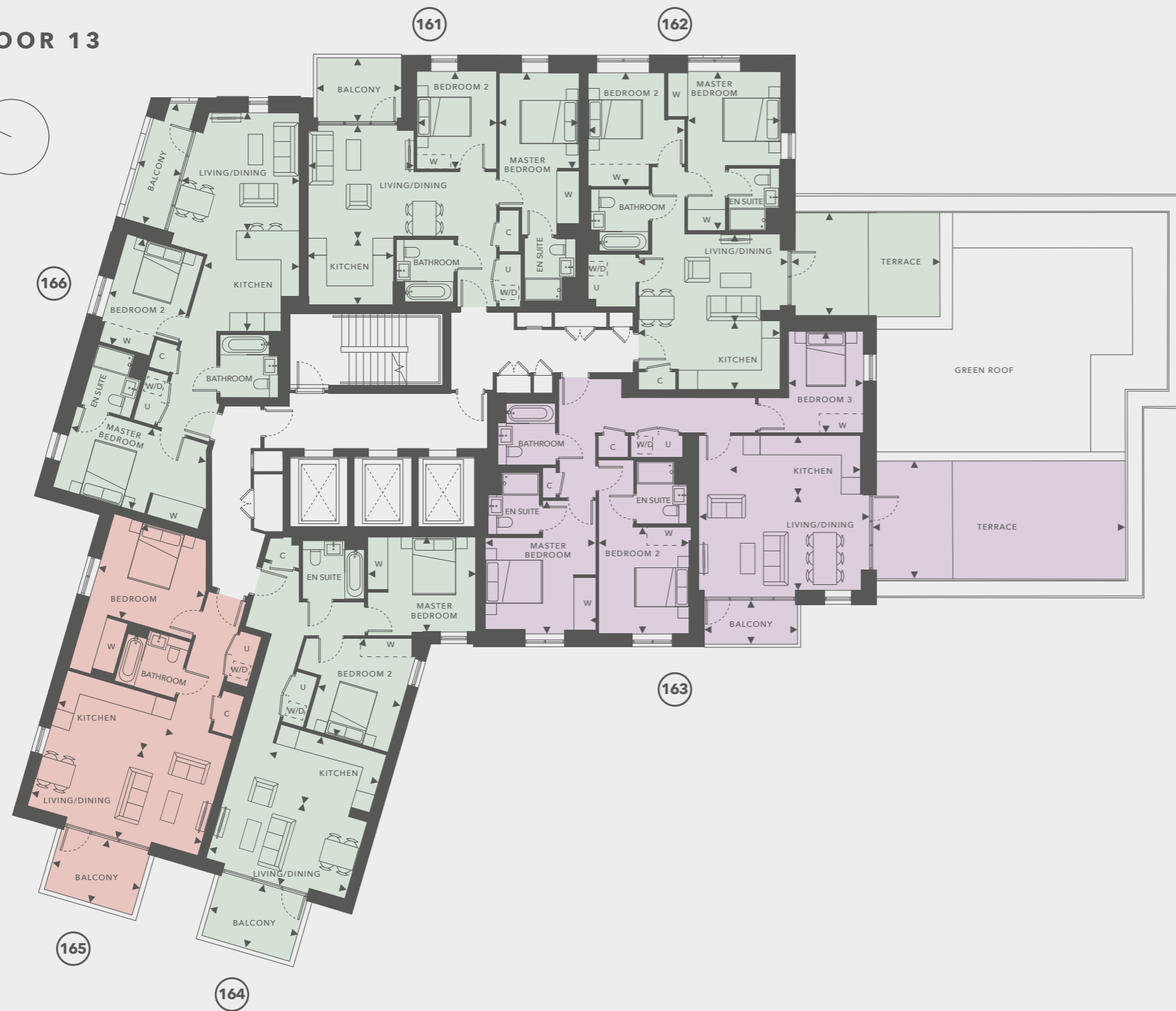
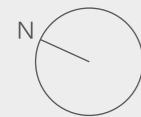
- ◄► Measurement points
- W Fitted wardrobe
- [W] Optional wardrobe
- W/D Washer/dryer
- U Utility cupboard
- C Coat cupboard

Floorplans are for approximate measurements only. Measurements may vary within a tolerance of 5%. The dimensions are not intended to be used for carpet sizes, appliance sizes or items of furniture. Furniture shown is not included.



<p>APARTMENT 152 TWO BEDROOM, TYPE 1A</p> <p>Living / Dining 3.66 x 3.84 m / 12'0" x 12'7"</p> <p>Kitchen 2.93 x 2.33 m / 9'7" x 7'8"</p> <p>Master Bedroom 2.75 x 3.36 m / 9'0" x 11'0"</p> <p>Bedroom 2 2.73 x 3.36 m / 8'11" x 11'0"</p> <p>Total Internal Area 68.8 sq m / 740.3 sq ft</p> <p>Balcony 2.94 x 2.19 m / 9'8" x 7'2"</p> <p>Total Balcony Area 6.5 sq m / 69.5 sq ft</p>	<p>APARTMENT 155 ONE BEDROOM, TYPE 16A</p> <p>Living Room 4.64 x 4.26 m / 15'3" x 14'0"</p> <p>Kitchen 4.38 x 1.96 m / 14'4" x 6'5"</p> <p>Master Bedroom 4.46 x 2.80 m / 14'8" x 9'2"</p> <p>Total Internal Area 58.5 sq m / 629.5 sq ft</p> <p>Balcony 2.34 x 3.19 m / 7'8" x 10'6"</p> <p>Total Balcony Area 7.3 sq m / 78.6 sq ft</p>	<p>APARTMENT 158 TWO BEDROOM, TYPE 17</p> <p>Living / Dining 4.96 x 3.32 m / 16'3" x 10'11"</p> <p>Kitchen 2.08 x 3.86 m / 6'10" x 12'8"</p> <p>Master Bedroom 3.75 x 3.27 m / 12'4" x 10'9"</p> <p>Bedroom 2 2.91 x 3.70 m / 9'7" x 12'2"</p> <p>Total Internal Area 69.6 sq m / 748.7 sq ft</p> <p>Terrace 5.12 x 4.94 m / 16'9" x 16'2"</p> <p>Total Terrace Area 25.0 sq m / 269.0 sq ft</p>
<p>APARTMENT 153 ONE BEDROOM, TYPE 2A</p> <p>Living / Dining 3.54 x 4.35 m / 11'7" x 14'3"</p> <p>Kitchen 3.54 x 3.15 m / 11'7" x 10'4"</p> <p>Master Bedroom 2.83 x 4.38 m / 9'3" x 14'4"</p> <p>Total Internal Area 52.3 sq m / 563.3 sq ft</p> <p>Balcony 3.60 x 1.50 m / 11'10" x 4'11"</p> <p>Total Balcony Area 5.1 sq m / 54.8 sq ft</p>	<p>APARTMENT 156 SUITE, TYPE 8</p> <p>Living / Dining 3.33 x 3.17 m / 10'11" x 10'5"</p> <p>Kitchen 3.33 x 3.48 m / 10'11" x 11'5"</p> <p>Bedroom 2.27 x 3.75 m / 7'5" x 12'4"</p> <p>Total Internal Area 41.6 sq m / 447.9 sq ft</p> <p>Balcony 3.21 x 1.52 m / 10'6" x 5'0"</p> <p>Total Balcony Area 5.0 sq m / 54.0 sq ft</p>	<p>APARTMENT 159 ONE BEDROOM, TYPE 18</p> <p>Living / Dining 6.13 x 3.18 m / 20'1" x 10'5"</p> <p>Kitchen 1.93 x 3.93 m / 6'4" x 12'11"</p> <p>Master Bedroom 3.79 x 3.42 m / 12'5" x 11'3"</p> <p>Total Internal Area 59.9 sq m / 645.0 sq ft</p> <p>Terrace 5.12 x 6.17 m / 16'9" x 20'2"</p> <p>Total Terrace Area 31.1 sq m / 334.7 sq ft</p>
<p>APARTMENT 154 TWO BEDROOM, TYPE 15A</p> <p>Living / Dining 4.60 x 3.61 m / 15'1" x 11'10"</p> <p>Kitchen 2.92 x 2.83 m / 9'7" x 9'3"</p> <p>Master Bedroom 3.07 x 3.93 m / 10'1" x 12'11"</p> <p>Bedroom 2 4.33 x 2.77 m / 14'2" x 9'1"</p> <p>Total Internal Area 73.1 sq m / 786.4 sq ft</p> <p>Balcony 2.33 x 3.19 m / 7'8" x 10'6"</p> <p>Total Balcony Area 7.3 sq m / 78.6 sq ft</p>	<p>APARTMENT 157 ONE BEDROOM, TYPE 9</p> <p>Living / Dining 3.73 x 4.06 m / 12'3" x 13'4"</p> <p>Kitchen 3.73 x 3.40 m / 12'3" x 11'2"</p> <p>Master Bedroom 2.90 x 4.71 m / 9'6" x 15'5"</p> <p>Bedroom 2 3.81 x 2.76 m / 12'6" x 9'0"</p> <p>Total Internal Area 54.7 sq m / 588.6 sq ft</p> <p>Balcony 3.71 x 1.50 m / 12'2" x 4'11"</p> <p>Total Balcony Area 5.3 sq m / 57.2 sq ft</p>	<p>APARTMENT 160 TWO BEDROOM, TYPE 14B</p> <p>Living / Dining 3.91 x 4.05 m / 12'10" x 13'3"</p> <p>Kitchen 3.66 x 3.18 m / 12'0" x 10'5"</p> <p>Master Bedroom 2.90 x 4.71 m / 9'6" x 15'5"</p> <p>Bedroom 2 3.81 x 2.76 m / 12'6" x 9'0"</p> <p>Total Internal Area 72.4 sq m / 779.5 sq ft</p> <p>Balcony 4.35 x 1.54 m / 14'4" x 5'1"</p> <p>Total Balcony Area 6.4 sq m / 68.4 sq ft</p>

FLOOR 13



- One bed apartment
- Two bed apartment
- Three bed apartment

- ◄► Measurement points
- W Fitted wardrobe
- [W] Optional wardrobe
- W/D Washer/dryer
- U Utility cupboard
- C Coat cupboard

Floorplans are for approximate measurements only. Measurements may vary within a tolerance of 5%. The dimensions are not intended to be used for carpet sizes, appliance sizes or items of furniture. Furniture shown is not included.



APARTMENT 163
THREE BEDROOM, TYPE 19

Living / Dining
5.87 x 3.55 m / 19'3" x 11'8"

Kitchen
4.21 x 2.03 m / 13'10" x 6'8"

Master Bedroom
3.82 x 3.19 m / 12'6" x 10'6"

Bedroom 2
3.19 x 3.70 m / 10'5" x 12'2"

Bedroom 3
2.57 x 3.51 m / 8'5" x 11'6"

Total Internal Area
104.4 sq m / 1124.7 sq ft

Balcony
3.23 x 1.52 m / 10'7" x 5'0"

Total Balcony Area
5.00 sq m / 53.99 sq ft

Terrace
8.77 x 4.03 m / 28'9" x 13'2"

Total Terrace Area
35.2 sq m / 378.8 sq ft

Total Balcony Area
7.3 sq m / 78.6 sq ft

APARTMENT 165
ONE BEDROOM, TYPE 18A

Living / Dining
6.13 x 3.18 m / 20'1" x 10'5"

Kitchen
1.93 x 3.93 m / 6'4" x 12'11"

Master Bedroom
3.78 x 3.42 m / 12'5" x 11'3"

Total Internal Area
59.9 sq m / 644.3 sq ft

Balcony
2.33 x 3.19 m / 7'8" x 10'6"

Total Balcony Area
7.3 sq m / 78.6 sq ft

APARTMENT 161
TWO BEDROOM, TYPE 1B

Living / Dining
3.66 x 3.84 m / 12'0" x 12'7"

Kitchen
2.93 x 2.33 m / 9'7" x 7'8"

Master Bedroom
2.75 x 3.36 m / 9'0" x 11'0"

Bedroom 2
2.75 x 3.36 m / 9'0" x 11'0"

Total Internal Area
68.8 sq m / 740.3 sq ft

Balcony
2.94 x 2.19 m / 9'8" x 7'2"

Total Balcony Area
6.5 sq m / 69.5 sq ft

APARTMENT 162
TWO BEDROOM, TYPE 25

Living / Dining
5.15 x 3.04 m / 16'11" x 10'0"

Kitchen
2.33 x 4.89 m / 7'8" x 16'0"

Master Bedroom
3.21 x 5.52 m / 10'6" x 18'1"

Bedroom 2
3.37 x 3.14 m / 11'1" x 10'4"

Total Internal Area
68.8 sq m / 740.0 sq ft

Terrace
5.19 x 3.53 m / 17'0" x 11'6"

Total Terrace Area
18.1 sq m / 194.8 sq ft

APARTMENT 164
TWO BEDROOM, TYPE 17A

Living / Dining
4.98 x 3.32 m / 16'4" x 10'11"

Kitchen
2.08 x 3.86 m / 6'10" x 12'8"

Master Bedroom
3.74 x 3.24 m / 12'3" x 10'8"

Bedroom 2
2.93 x 3.44 m / 9'7" x 11'3"

Total Internal Area
69.5 sq m / 747.8 sq ft

Balcony
3.19 x 2.34 m / 10'6" x 7'8"

Total Balcony Area
7.3 sq m / 78.6 sq ft

APARTMENT 166
TWO BEDROOM, TYPE 14B

Living / Dining
3.91 x 4.05 m / 12'10" x 13'3"

Kitchen
3.66 x 3.18 m / 12'0" x 10'5"

Master Bedroom
2.90 x 4.71 m / 9'6" x 15'5"

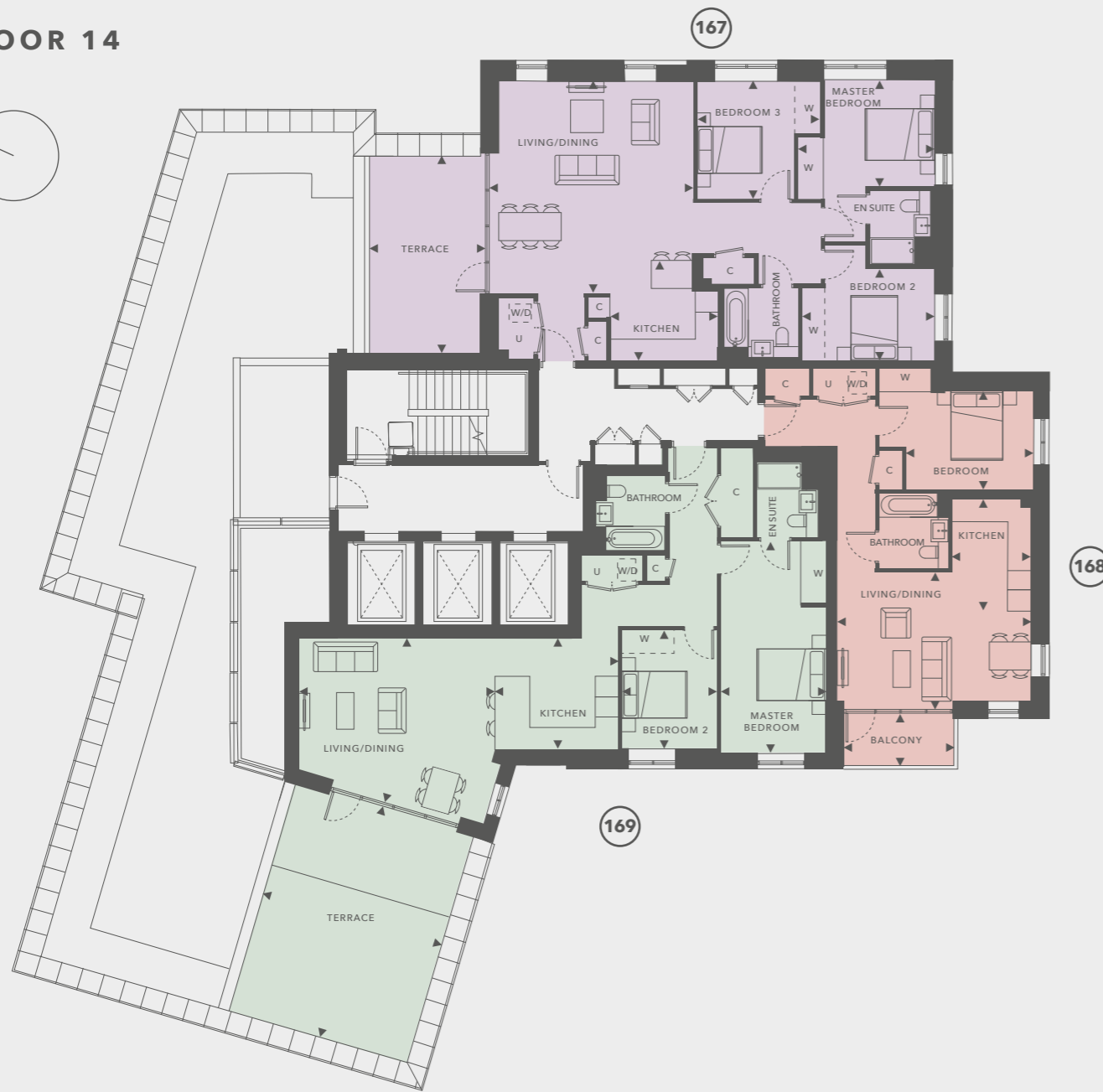
Bedroom 2
3.81 x 2.76 m / 12'6" x 9'0"

Total Internal Area
72.4 sq m / 779.5 sq ft

Balcony
4.35 x 1.54 m / 14'4" x 5'1"

Total Balcony Area
6.4 sq m / 68.4 sq ft

FLOOR 14



- One bed apartment
- Two bed apartment
- Three bed apartment

- ◄► Measurement points
- W Fitted wardrobe
- [W] Optional wardrobe
- W/D Washer/dryer
- U Utility cupboard
- C Coat cupboard

Floorplans are for approximate measurements only. Measurements may vary within a tolerance of 5%. The dimensions are not intended to be used for carpet sizes, appliance sizes or items of furniture. Furniture shown is not included.



APARTMENT 167
THREE BEDROOM, TYPE 20

Living / Dining	5.90 x 5.94 m / 19'4" x 19'6"
Kitchen	3.16 x 3.10 m / 10'4" x 10'2"
Master Bedroom	3.96 x 3.09 m / 13'0" x 10'1"
Bedroom 2	3.82 x 2.68 m / 12'6" x 8'9"
Bedroom 3	3.57 x 3.40 m / 11'8" x 11'2"
Total Internal Area	102.8 sq m / 1106.5 sq ft
Terrace	3.30 x 5.84 m / 10'9" x 19'1"
Total Terrace Area	19.0 sq m / 204.5 sq ft

APARTMENT 168
ONE BEDROOM, TYPE 21

Living / Dining	5.59 x 3.97 m / 18'4" x 13'0"
Kitchen	3.32 x 2.26 m / 10'11" x 7'5"
Master Bedroom	3.67 x 2.85 m / 12'0" x 9'4"
Total Internal Area	57.5 sq m / 619.0 sq ft
Balcony	3.23 x 1.52 m / 10'7" x 5'0"
Total Balcony Area	5.0 sq m / 54.0 sq ft

APARTMENT 169
TWO BEDROOM, TYPE 22

Living / Dining	5.68 x 4.86 m / 18'7" x 15'11"
Kitchen	3.55 x 3.24 m / 11'8" x 10'8"
Master Bedroom	3.00 x 6.11 m / 9'10" x 20'1"
Bedroom 2	2.75 x 3.42 m / 9'0" x 11'3"
Total Internal Area	94.4 sq m / 1015.6 sq ft
Terrace	6.91 x 5.37 m / 22'8" x 17'7"
Total Terrace Area	36.9 sq m / 397.1 sq ft



**FIRST LIFE,
THEN SPACES,
THEN BUILDINGS.**

01



02



03

ST WILLIAM- LANDSCAPES FOR LIVING

St William is a joint venture between the Berkeley Group and National Grid. Our vision is to develop sites that have been closed to the public for decades and reconnect them to the community.

We want the places built by St William to be renowned for the quality of their landscape and the open space. The term 'landscape' comes from two words meaning 'to shape a place where people belong'.

That idea inspires our approach. The space between buildings is where you create a community and somewhere that is sociable, sustainable and safe. We believe beautiful landscaped open spaces give room to breathe, and sit in harmony with our vision for the carefully considered architecture and thoughtfully designed interiors throughout our developments. To pioneer a landscape led approach to urban developments is hugely important to us. We truly believe these spaces between the buildings are as important as the buildings themselves, where one's well-being within that space can be emphasised through positive design. Backed by the strength and expertise of National Grid and the Berkeley Group, St William will regenerate sites at the heart of communities across London and the South of England, creating homes for people to enjoy.

- 01 Kidbrooke Village, Berkeley Homes
- 02 Roehampton House, St James
- 03 Woodberry Down, Berkeley Homes

DESIGNED FOR LIFE

Buying a home is one of the most important decisions you will ever make. The qualities that make St William different mean that you can choose a new home from us with complete confidence. When you buy a home from St William you can be safe in the knowledge that it is built to very high standards of design and quality, has low environmental impact and that you will enjoy an exceptional customer experience.

Award winning and royally recognised

In addition to receiving numerous awards for quality, design and customer service, the Berkeley Group was granted the 2014 Queen's Award for Enterprise in Sustainable Development and in 2011 they won Britain's Most Admired Company award. These awards recognise and reward outstanding achievements in business performance.

Customer service is our priority

We place the highest priority on customer service and will manage the whole moving process for you. Our Customer Care Teams will contact you shortly after you complete, to ensure that everything in your new home is absolutely to your liking. Our homes also benefit from a ten-year warranty, the first two years of which are covered by St William.

Green living and sustainable development is top of our agenda

As a company, we are committed to reducing energy, water and waste on our construction sites, in our offices and in the homes that we build. Almost all of our developments are built on brownfield land and we always take care to protect and enhance biodiversity and natural habitats. Our homes include features to encourage sustainable living such as dual-flush WCs, recycling bins and energy efficient white goods.

Quality is at the heart of everything we do

At St William, quality takes precedence, from choosing the right location and style of home, to the construction processes we practice, the materials we use and the specifications we put into our homes. For extra peace of mind, in addition to the 10-year warranty all new homes receive, St William operates a 2-year policy with dedicated Customer Service teams on hand 24-hours a day to deal with enquiries quickly and effectively.

Unparalleled choice of homes in the most sought after locations

As one of the UK's leading house builders, we are able to offer our customers an unrivalled choice of property location, size and type. From city penthouses to country retreats, modern studio apartments to traditional family homes, you will find the perfect home to match your requirements. Our homes are also built in some of Britain's most desirable locations from market towns and rural villages to major towns and cities, and countryside to the coast - we build in the locations you want to live.

A commitment to creating sustainable communities

St William's homes and developments are not just built for today. They are designed to enhance the neighbourhoods in which they are located permanently. We achieve this through our commitment to excellence in design, sensitive landscaping, sympathetic restoration, and impeccable standards of sustainability. We aim to address the needs not only of our customers but their neighbours and the broader community of which they are a part. It is a long-term view: we want to create exceptional places for people to live, work and relax in, and build communities that will thrive today and for years to come.

A COMMITMENT TO THE FUTURE

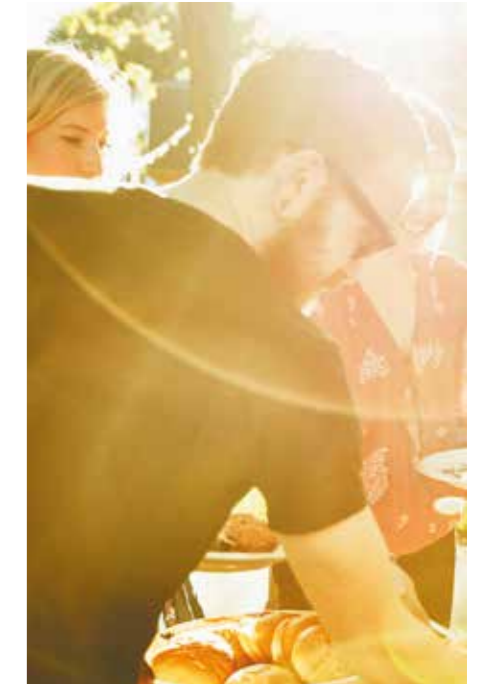
Over the years, the Berkeley Group has won many prestigious awards for the quality, design and sustainability of its developments. Our Vision is Berkeley's plan for the business, designed to raise standards higher still. Our goal is to be a World-Class company creating successful, sustainable places where people aspire to live. We take our responsibilities towards our customers, the environment, the workforce and the communities in which we work very seriously. Our plan for the business has five areas of focus: Customers, Homes, Places, Operations and Our People.

Our vision

To be a world-class business generating long-term value by creating successful, sustainable places where people aspire to live.

Homes at Hornsey Park Place benefit from

- Low energy LED lightbulbs throughout
- Communal Heating System
- Dual flush WC 6/3 litres
- Baths under 164 litre capacity to overflow
- Brown and green roofs
- A 35% improvement in CO₂ emissions over Building Regulations
- A-rated appliances
- Cycle storage and electric charge points



FIVE FOCUS AREAS

An exceptional customer experience

We aim to put customers at the heart of our decisions. Dedicated Sales Teams will provide exceptional service throughout the buying process, and teams will manage the customer relationship from exchange of contracts through to completion, delivery of the new home and after occupancy.

High quality homes

When you buy a new home from Berkeley you can be safe in the knowledge that it is built to very high standards of design and quality and has low environmental impact. We meet specific space standards for new homes and aim to deliver a home which has fibre broadband infrastructure.

Great places

We seek to create beautiful, successful places characterised by the quality of their design, external spaces, transport and access to jobs and amenities. These are places where people choose to live, work and spend their time and which directly encourage people's well-being and quality of life.

Efficient and considerate operations

We reduce the impact of the construction process on the local community by registering all of our sites with the Considerate Constructors Scheme. We set targets to reduce water, energy and waste. We work with our supply chain to ensure high quality services and materials are consistently provided.

A commitment to people and safety

Safety is a high priority on all of our construction sites. We also aim to have a positive impact on society and enable young and unemployed people to get into work through our support of the Berkeley Foundation.

Some features are only applicable to specific developments. Please ask sales negotiator for further information

The Berkeley Foundation

Berkeley takes social responsibility very seriously. In 2011 we set up The Berkeley Foundation, with the aim of supporting Britain's young people and their communities.

We do this through a number of partner charities that tackle some of the most pressing social problems affecting young people today, including homelessness and unemployment. The money raised comes part from the Berkeley Group, and also

through the tireless and inventive efforts of our staff.

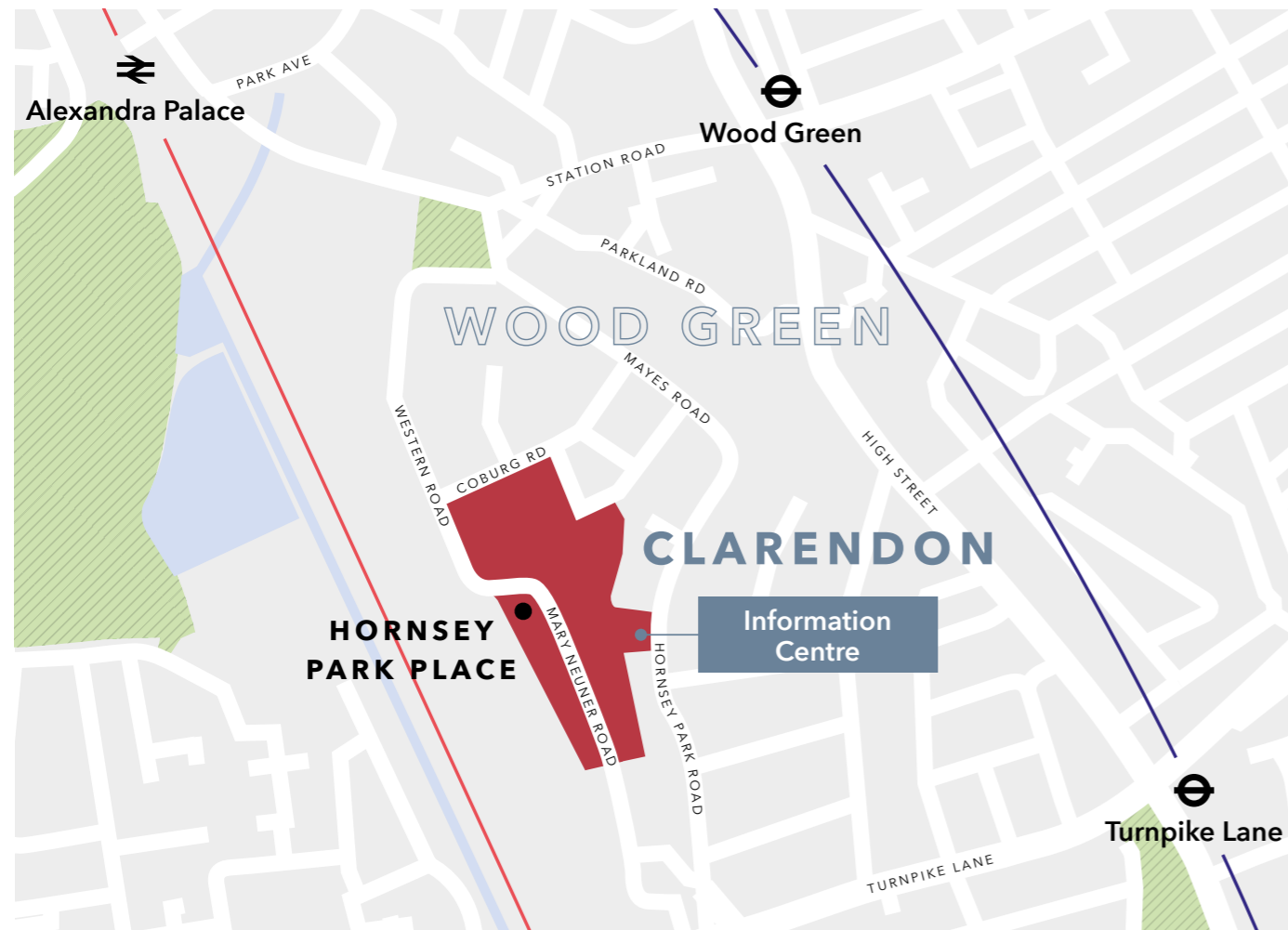
We have set a goal for The Berkeley Foundation to invest £10 million over the next five years to support young people and their communities. Every penny will be spent on charitable activities and worthy causes to ensure that maximum benefit is achieved.

www.berkeleyfoundation.org.uk
www.berkeleygroup.co.uk



Proud to be a member of the Berkeley Group of Companies





Visit the Clarendon Information Centre

107-111 Hornsey Park Road
London N8 0JX

020 3944 1176
sales.clarendon@stwilliam.co.uk
clarendonn8.co.uk

@BerkeleyGroupUK

berkeley_group

The information in this document is indicative and is intended to act as a guide only as to the finished product. Accordingly, due to St William's policy of continuous improvement, the finished product may vary from the information provided. These particulars should not be relied upon as statements of fact or representations and applicants must satisfy themselves by inspection or otherwise as to their correctness. This information does not constitute a contract or warranty. Hornsey Park Place is a marketing name and will not necessarily form part of the approved postal address. Applicants are advised to contact St William to ascertain the availability of any particular property. Floorplans shown for Hornsey Park Place at Clarendon are for approximate measurements only. Exact layouts and sizes may vary. All measurements may vary within a tolerance of 5%. The dimensions are not intended to be used for carpet sizes, appliance sizes or items of furniture. Computer-generated images are indicative only and subject to change. Lifestyle images and illustrations are indicative only. Maps are not to scale and show approximate locations only. Travel times taken from google.co.uk/maps, tfl.gov.uk and nationalrail.co.uk. Your attention is drawn to the fact that it may not be possible to provide the branded products as referred to in the specification. In such cases, a similar alternative will be provided. St William reserves the right to make these changes as required. A number of choices and options are available to personalise your home. Choices and options are subject to time frames, availability and change. W250/CA23A/0918



Computer-generated image is indicative only and subject to change



Berkeley
Group

St William
Designed for life