

Computer Prerequisites for IVES/EBRS

System Requirements:

User's Computer (Minimum)

Processor: 1 gigahertz (GHz) or faster 32-bit (x86) – Minimum of 32-bit, but 64-bit is OK too

Operating System: Windows XP, or later – Microsoft is dropping XP support, so for that reason IDPH cannot support Windows XP, but will support Windows 7 and higher versions

RAM: 1 GB or greater

Hard Disk Space: 512 MB or greater

Monitor: VGA or higher (1024 x 768 pixels)

Mouse: Microsoft Mouse, or compatible pointing device

Browser: Internet Explorer 6.0 SP1 or higher (32-bit only)

Minimum Java Requirement: JRE 1.6.0_17 or later (32-bit only)

.Net 4.0 Client Profile and Extended Framework installed (or higher version)

User's Computer (Recommended)

Processor: 2 gigahertz (GHz) or faster 32-bit (x86) or 64-bit

Operating System: **Windows 7 or higher versions**

RAM: 2 GB or greater

Hard Disk Space: 1 GB or greater

Monitor: VGA or higher (1024 x 768 pixels)

Mouse: Microsoft Mouse, or compatible pointing device

Browser: Internet Explorer 7.0 or greater (32-bit only)


Minimum Java Requirement: JRE 1.6.0_17 or later (32-bit only)

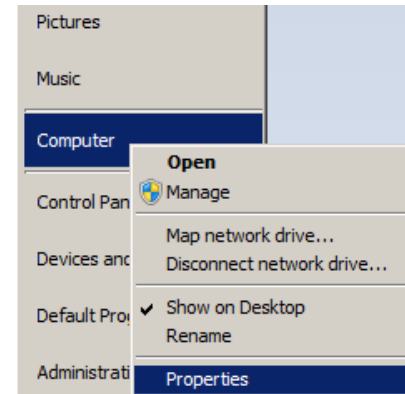
.Net 4.0 Client Profile and Extended Framework installed (or higher version)

Continued on next page.

Computer Prerequisites for IVES/EBRS

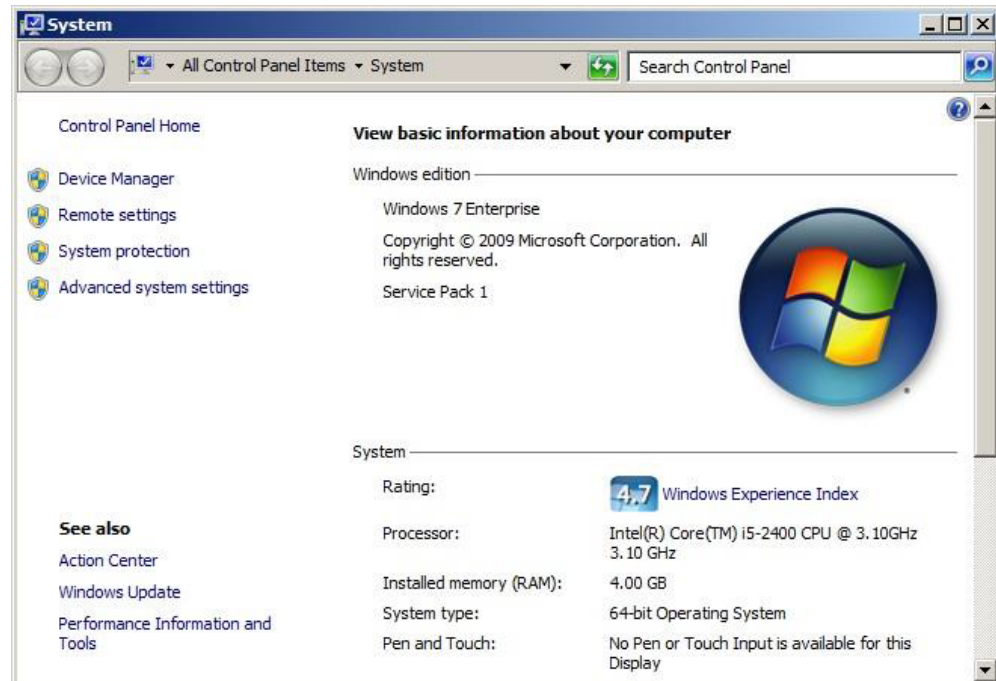
How to tell what your system specs are:

Select **Start**  button (lower-left corner)
– **All Programs – Computer (or My Computer) – Properties**



It will display:

- Operating System
- Processor
- Memory (RAM)
- System type (If it's 64-bit, it will display that)



Continued on next page.

Computer Prerequisites for IVES/EBRS

How to tell what version of Internet Explorer you are using:

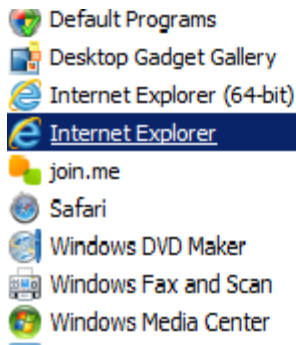
Open Internet Explorer and select **About Internet Explorer**

If it says it's 64-bit, this is **NOT** the version you want to use for IVES.

*Internet Explorer (32-bit version) can run on 64-bit operating systems, and generally is already installed and accessible as well. **Google Chrome, Firefox, etc. cannot be used to access IVES.***



Select **Start**  (lower-left corner) – All Programs




Use the Internet Explorer that doesn't list the bit afterwards. That will be the 32-bit version. If you don't have it installed, you should be able to download it from the Microsoft.com website (be sure to download the correct one for your operating system).

Continued on next page.

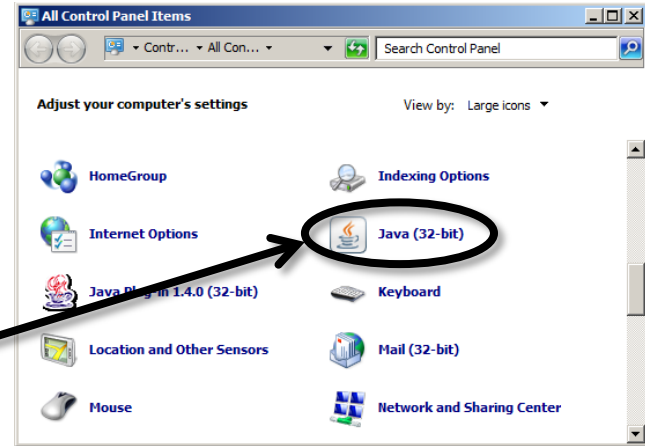
Computer Prerequisites for IVES/EBRS

How to tell what version of Java is loaded:

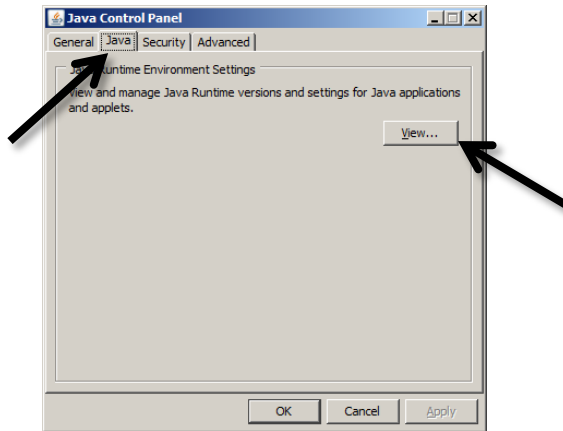
Select **Start**  (lower-left corner) – **Control Panel**

If Java is installed, you should see a Java (32-bit) icon in your Control Panel. If it doesn't have the (32-bit) after Java, then you will need to install the 32-bit version.

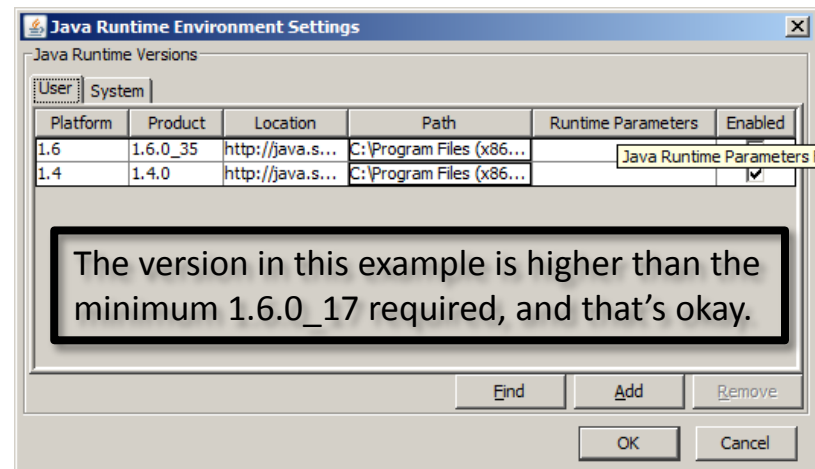
Select the Java (32-bit) icon



Select the **Java** tab, and select **View**




Versions of Java that are installed on your computer will be listed.






Continued on next page.

Computer Prerequisites for IVES/EBRS

How to tell what version of .Net Framework is loaded:

Select **Start**  (lower-left corner) – **Control Panel**

 Programs and Features	Select Programs and Features (or Add Remove Programs in Windows XP)
 Microsoft .NET Framework 4 Client Profile  Microsoft .NET Framework 4 Extended	Scroll down the list to Microsoft and see if Microsoft .NET Framework 4 Client Profile and Extended are installed <i>.Net Framework 4.5 will also work (if you have Windows 8 operating system, it is preloaded with .Net Framework 4.5)</i>
If it's not installed go to this site to install it: http://www.microsoft.com/en-us/download/details.aspx?id=17851	If you cannot install it, you may not have enough 'permissions' to your local computer. You need to have full permissions to the local computer.

If your office requires an IT staff person to install software or modify your system, you may need to schedule some time with them to get this setup.