

COMRESOR DE AIRE ATLAS COPCO XAS 96

Marca: Atlas Copco

Modelo: Xas 96

Año: 1999

PCM: 180

PSI: 125

Petrolero

Motor: DEUTZ

Modelo: F3M1011F

Peso: 910 Kg

Dimensiones: Largo Total: 3,07 Mts.,

Alto: 1,27 Mts., Ancho: 1,35 Mts.,

Con Horómetro.

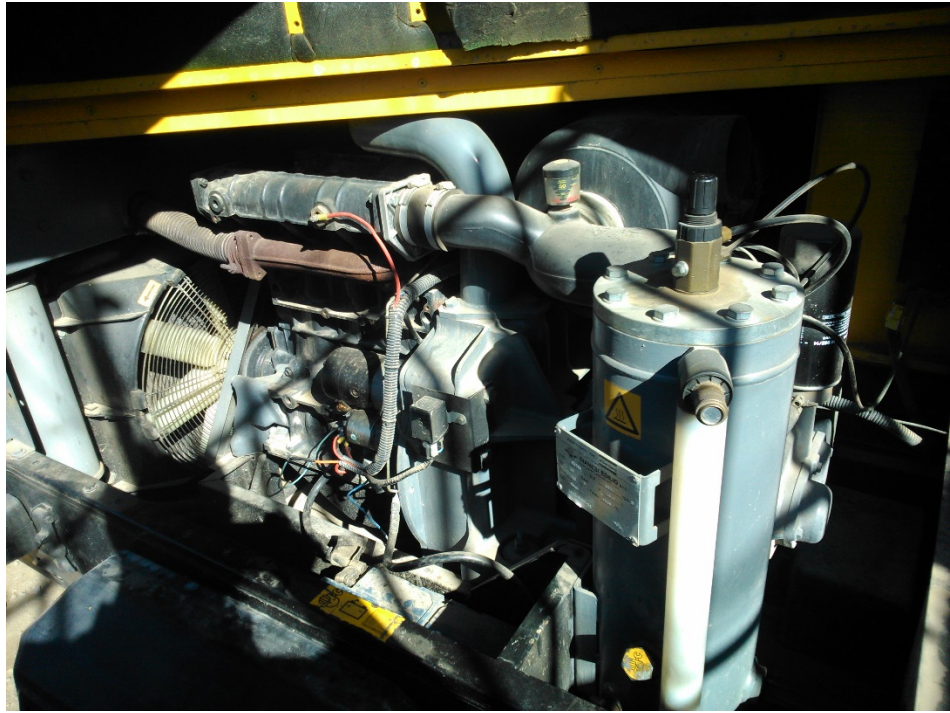
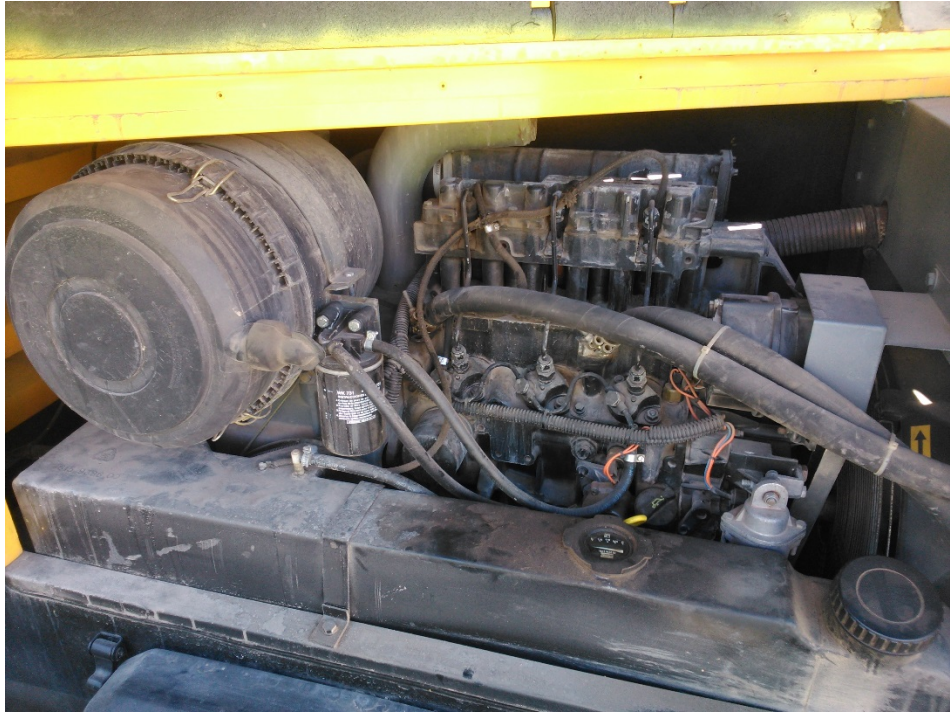
Para ser usado con dos equipos (perforadoras o martillos neumáticos).

Partida con llave uso de inyección











Atlas Copco Portable air compressors

XAS 96

89 l/s (5.4 m³/min, 190 cu.ft/min)



Atlas Copco

Series 6 A proven concept in portable air compressors

XAS96 is a new model to the renown Series 6 from Atlas Copco, an innovative range of oil injected, rotary screw compressors. The single axle unit comes with a highly efficient, brand new compressor element. Driven by a powerful 3-cylinder Deutz diesel engine it provides reliable compressed air for heavy duty applications with combinations of pneumatic tools such as chipping hammers, jackhammers, nut runners, grinding tools, and rammers - or for sandblasting. An optional generator provides added power for fusion welding, light poles, heating of cabins, instrumentation and electric power tools.



The features you 've always wanted

For the Series 6, Atlas Copco involved end users and sales companies in the design from the very beginning. This attention to your needs resulted in the development of many new features, including a new compressor element, a new diesel engine, a unique canopy and a modular concept that allows you to add many options to suit your needs.

Meets legal safety and environmental requirements

The XAS96 compressors meet current and pending European Community legal requirements for the working environment; and regulations for safety, exhaust emissions, and noise.

Built and tested to ISO 9001 quality assurance standards

Atlas Copco's stringent manufacturing standards - which follow the ISO 9001 regulations for quality assurance - produce compressors that are made and tested to perform in the most demanding conditions.

Principal data

Compressor

Type		XAS96 Dd	XAS96 DdG
Normal effective working pressure	bar	7	7
	psig	102	102
Actual free air delivery guaranteed according to ISO 1217 ed. 3 1996 annex D	l/s	89	89
	m ³ /min	5.4	5.4
	cu.ft/min	190	190
Sound power acc. EEG 84/533 and 85/406	dB(A)	100	100
Sound pressure level acc. ISO 2151 at 7 m	dB(A)	72	72
Oil capacity	l	8.0	8.0
	US gal	2.1	2.1

Generator

			50Hz 110V*	50Hz 230/400V**
Electric power: single phase	kW/kVA	-	4.4/4.4	4/4
	three phase	kW/kVA	-	5.2/6.5
Sockets 1 phase	A	-	2x16+1x32	-
Sockets 3 phase	A	-	-	1x16
	1 phase Schuko	A	-	2x16

* complying with British Gas Spec. TIN 12

** complying with ISO 8528/8 - DIN 6280/10

Engine

Type - model	Deutz	F3M1011F	F3M1011F
Number of cylinders		3	3
Full load speed	r/min	2900	2900
Output at rated speed	kW	35.4	35.4
Capacity of fuel tank	l	73	73
	US gal	19.3	19.3

Unit dimensions

		without brakes		with brakes	
		fixed		fixed	adjustable
Length	mm	3025		3078	3497
	inch	119		121	138
Width	mm	1350		1350	1350
	inch	53		53	53
Height	mm	1273		1273	1273
	inch	50		50	50
Weight (ready-to-operate/ full fuel tank) ¹⁾	kg	880		910	930
	lbs	1940		2006	2050
Outlets		3x3/4"		3x3/4"	3x3/4"

¹⁾ with generator 110V: +35 kg/ 77 lbs - 230/400V: +42kg/ 93 lbs

Series 6 Everything you asked for in compressed air power

The canopy doors open diagonally with the help of pneumatic springs to give you easy access to the machinery. With the doors up and out of the way, you can perform routine maintenance in less time

All the controls are grouped on a single panel near the outlet valves, and covered by a plastic cover for easy monitoring, safety and foolproof operation.

Low rotor speed, and few moving parts: the efficient engineering design of the compressor helps minimize wear, ensuring reliability second to none and a long working life.



The low decibel rating makes the Series 6 perfect for quiet operation near hospitals and schools, in residential areas, and even at night.

The single, high performance, two-stage air intake filter prevents dust and dirt particles from entering the engine and the compressor. A service indicator on the filter tells you when it needs replacement or maintenance

A fully automatic stepless speed regulator constantly adapts the engine speed to the air demand. You can count on economical power consumption, low fuel consumption, and continuous air flow at stable pressure.

You can easily remove the undercarriage for permanent mounting on a lorry.

A high capacity fuel tank carries you through a full shift and assures maximum productivity.



As standard there is room for up to two jackhammers inside the lockable canopy if no generator is installed.

Series 6

Choose the option you need

Vessel type:	Euro Asme
Towing bar:	Adjustable with brakes (A1) Fixed with brakes (A2) Fixed without brakes (A3)
Without towing bar:	Support (without undercarriage)
Towing eyes:	Atlas Copco DIN Ball Italian GB 50 mm NATO
Towbar support:	Leg Jockey wheel
Road signalisation:(B)	Full Semi
Air quality equipment:	Aftercooler + water separator (C) Aftercooler + water separator + fine filter + reheater Simplified reheater Simplified reheater + lubricator Aftercooler + water separator + reheater Lubricator (D)
Generator: (E)	110 V 230/400 V
Safety:	Wheel chocks Safety cartridge
Hose reel	
Customer colour:	Single Double Triple

- (A) The Series 6 compressors meet world-wide safety regulations, and are available with overrun and parking brakes.
- (B) They can also be provided with reflectors and lights to keep them visible from dusk until dawn.
- (C) Quality air through the aftercooler and water separator.
- (D) A genuine Atlas Copco lubricator will keep your pneumatic tools in top working condition.

Never use compressed air as breathing air without prior purification in accordance with local legislation and standards.

Visit our website: www.atlascopco.com



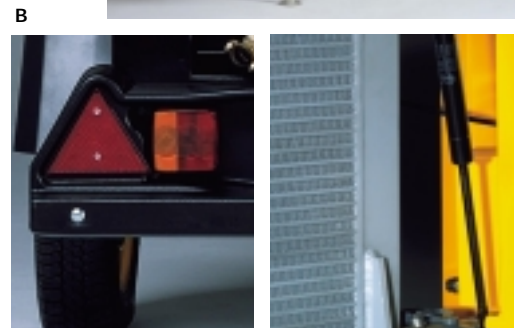
A1



A2



A3



C

D

E

