

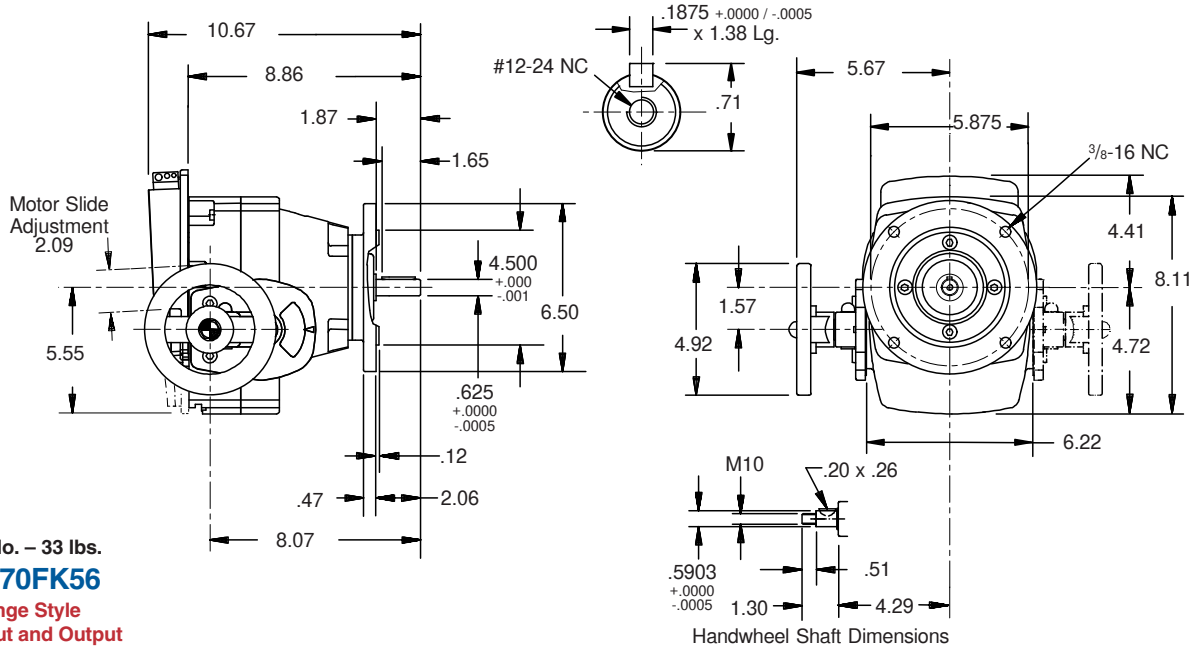


# ComTrac® Adjustable Speed Drives

## .50 HP @ 1750 RPM



All TD27 units are available with 56C and 143TC input.



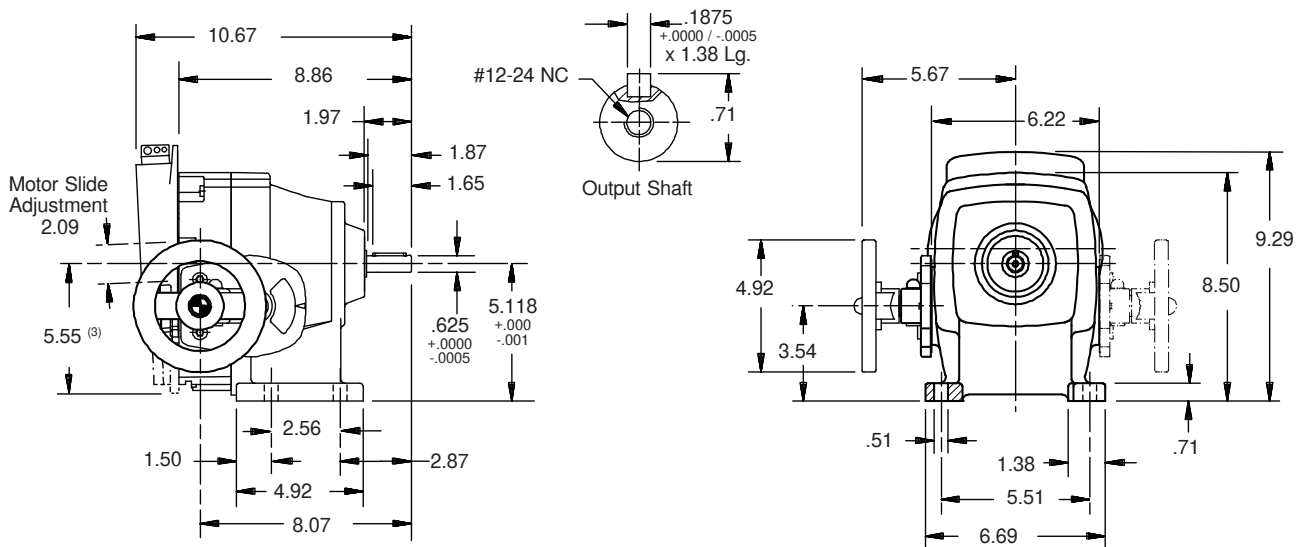
Part No. – 33 lbs.  
**TD270FK56**  
 Flange Style  
 56C Input and Output

Constant Horsepower Range			Constant Torque Range					
MAXIMUM RPM <sup>(1)</sup>	in.lbs.	HP	TRANSITION <sup>(2)</sup> RPM <sup>(1)</sup>	in.lbs.	HP	MINIMUM RPM <sup>(1)</sup>	in.lbs.	HP
2,180	12.2	0.42	334	66	0.35	311	66	0.33

All ratings shown are based on 1750 RPM motor speed and are rated to provide constant torque through the entire speed range. Contact STÖBER for constant horsepower applications. **MOTOR MUST BE ORDERED SEPARATELY.**

<sup>1)</sup> Speed tolerance at rated load is ±3%. At less than rated load, minimum speed may increase 5%.

<sup>2)</sup> The ComTrac drive operates at constant horsepower above transition values and at constant torque below transition values. Note shaded area. Engineering advances may cause slight changes to the information shown.



Part No. – 33 lbs.  
**TD270NK56**  
 Foot Mount  
 56C Input

<sup>(3)</sup> Motor is lower than the base of the ComTrac. See Page 15.

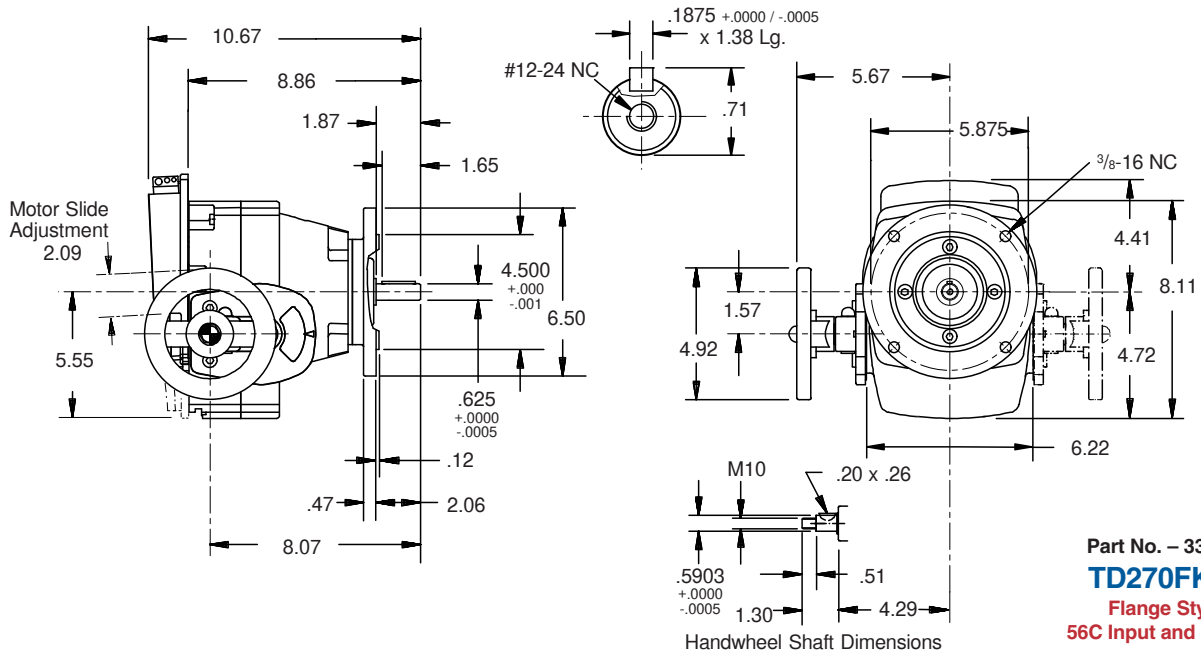


# ComTrac® Adjustable Speed Drives

## .75 HP @ 1750 RPM



All TD27 units are available with 56C and 143TC input.

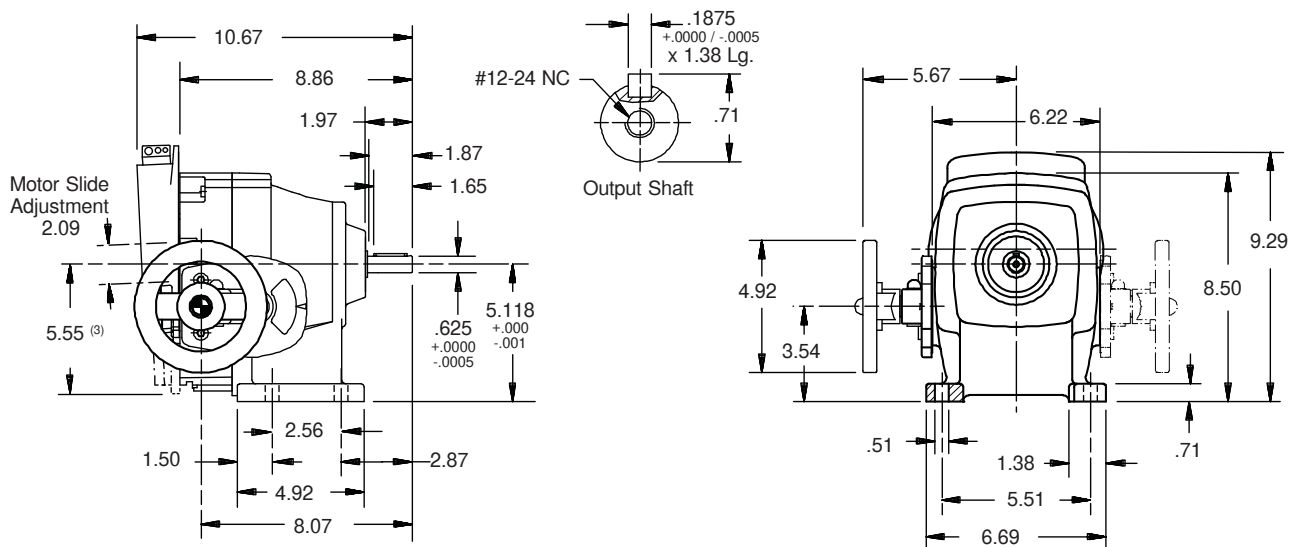


Constant Horsepower Range			Constant Torque Range					
RPM <sup>(1)</sup>	MAXIMUM		TRANSITION <sup>(2)</sup>			MINIMUM		
	in.lbs.	HP	RPM <sup>(1)</sup>	in.lbs.	HP	RPM <sup>(1)</sup>	in.lbs.	HP
2,180	18.3	0.63	582	66	0.61	311	66	0.33

All ratings shown are based on 1750 RPM motor speed and are rated to provide constant torque through the entire speed range. Contact STÖBER for constant horsepower applications. **MOTOR MUST BE ORDERED SEPARATELY.**

<sup>1)</sup> Speed tolerance at rated load is ±3%. At less than rated load, minimum speed may increase 5%.

<sup>2)</sup> The ComTrac drive operates at constant horsepower above transition values and at constant torque below transition values. Note shaded area. Engineering advances may cause slight changes to the information shown.



Part No. - 33 lbs.  
**TD270NK56**  
Foot Mount  
56C Input

<sup>(3)</sup> Motor is lower than the base of the ComTrac. See Page 15.

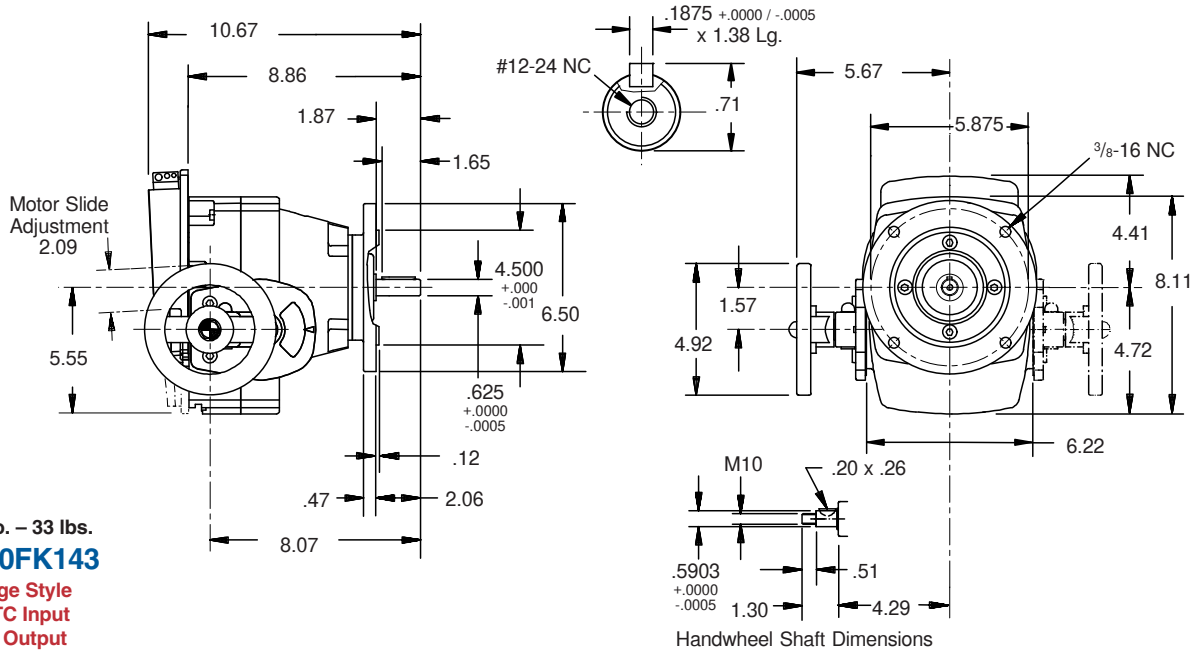


# ComTrac® Adjustable Speed Drives

## 1.0 HP @ 1750 RPM



All TD27 units are available with 56C and 143TC input.



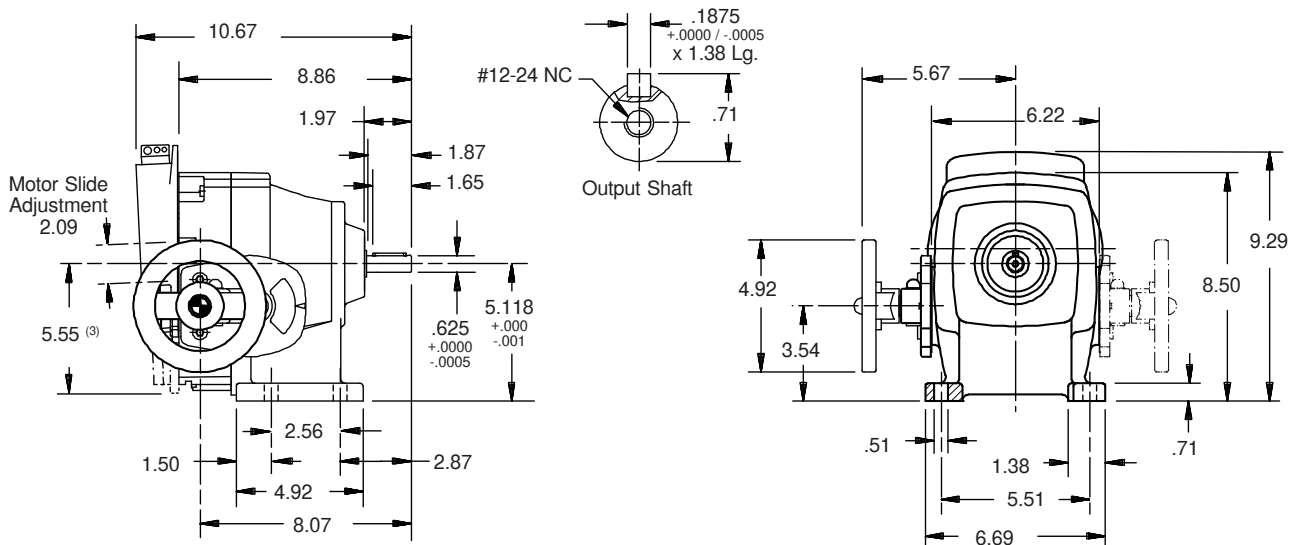
Part No. – 33 lbs.  
**TD270FK143**  
 Flange Style  
 143TC Input  
 56C Output

Constant Horsepower Range			Constant Torque Range					
MAXIMUM			TRANSITION <sup>(2)</sup>			MINIMUM		
RPM <sup>(1)</sup>	in.lbs.	HP	RPM <sup>(1)</sup>	in.lbs.	HP	RPM <sup>(1)</sup>	in.lbs.	HP
2,180	24.4	0.84	821	66	0.86	311	66	0.33

All ratings shown are based on 1750 RPM motor speed and are rated to provide constant torque through the entire speed range. Contact STÖBER for constant horsepower applications. **MOTOR MUST BE ORDERED SEPARATELY.**

<sup>1)</sup> Speed tolerance at rated load is ±3%. At less than rated load, minimum speed may increase 5%.

<sup>2)</sup> The ComTrac drive operates at constant horsepower above transition values and at constant torque below transition values. Note shaded area. Engineering advances may cause slight changes to the information shown.



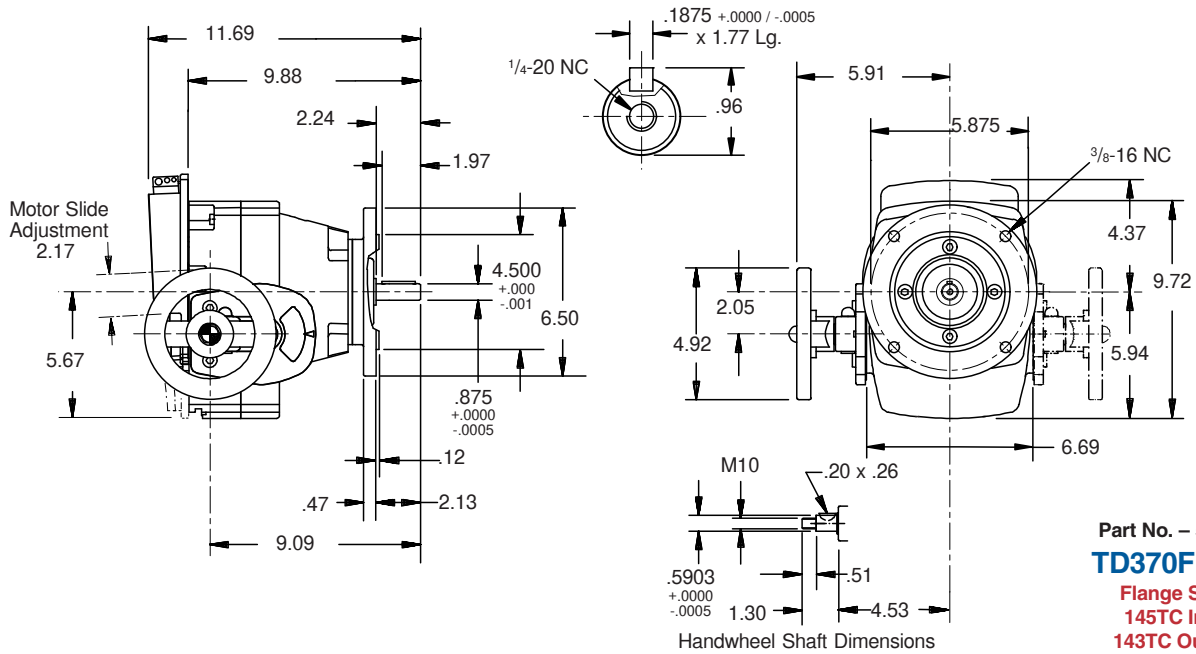
Part No. – 33 lbs.  
**TD270NK143**  
 Foot Mount  
 143TC Input

<sup>(3)</sup> Motor is lower than the base of the ComTrac. See Page 15.



# ComTrac® Adjustable Speed Drives

## 1.5 HP @ 1750 RPM



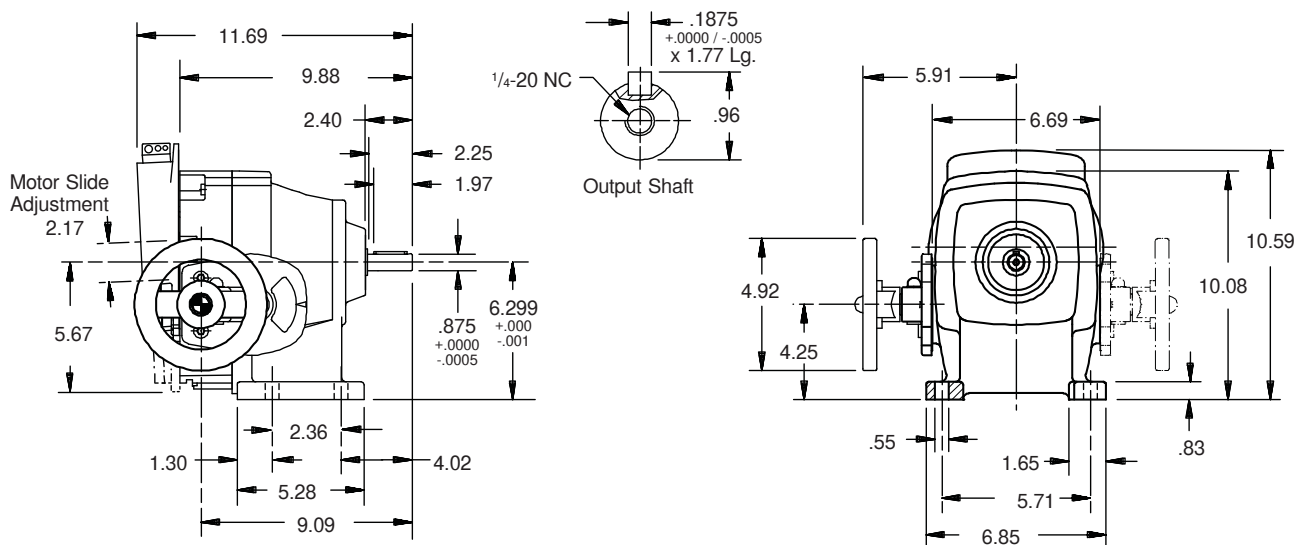
Part No. – 51 lbs.  
**TD370FK145**  
 Flange Style  
 145TC Input  
 143TC Output

Constant Horsepower Range			Constant Torque Range					
RPM <sup>(1)</sup>	MAXIMUM in.lbs.	HP	TRANSITION <sup>(2)</sup>		MINIMUM			
			RPM <sup>(1)</sup>	in.lbs.	HP	RPM <sup>(1)</sup>	in.lbs.	HP
2,100	38	1.27	856	97	1.31	420	97	0.64

All ratings shown are based on 1750 RPM motor speed and are rated to provide constant torque through the entire speed range. Contact STÖBER for constant horsepower applications. **MOTOR MUST BE ORDERED SEPARATELY.**

<sup>1)</sup> Speed tolerance at rated load is ±3%. At less than rated load, minimum speed may increase 5%.

<sup>2)</sup> The ComTrac drive operates at constant horsepower above transition values and at constant torque below transition values. Note shaded area. Engineering advances may cause slight changes to the information shown.

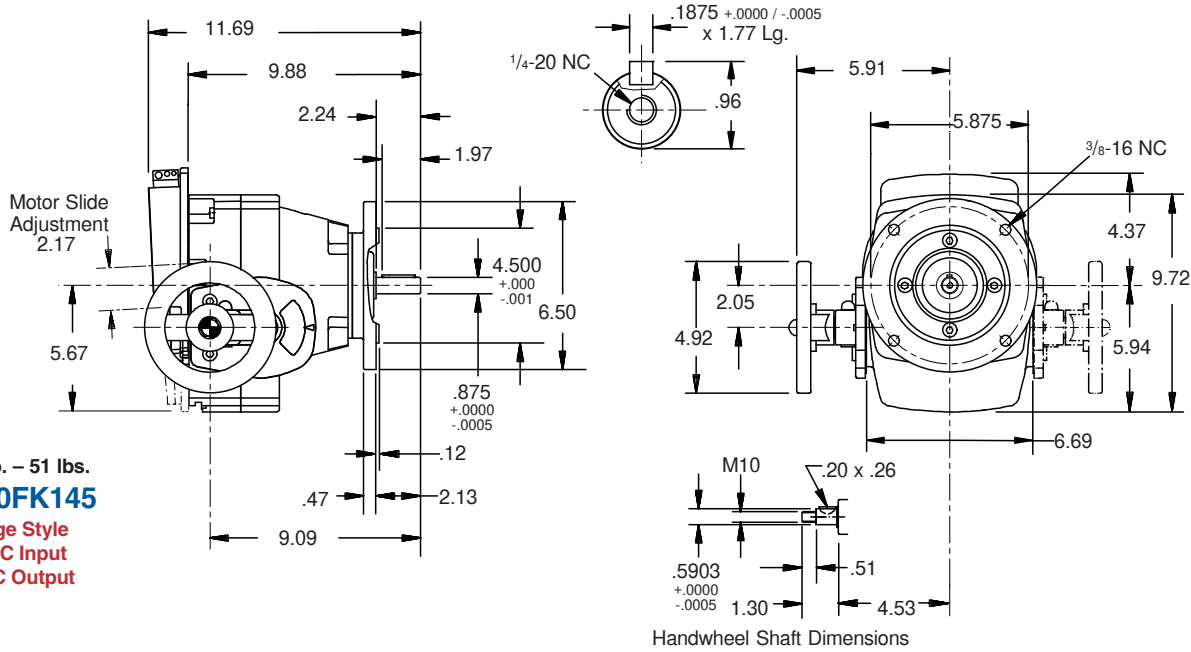


Part No. – 51 lbs.  
**TD370NK145**  
 Foot Mount  
 145TC Input



# ComTrac® Adjustable Speed Drives

## 2.0 HP @ 1750 RPM



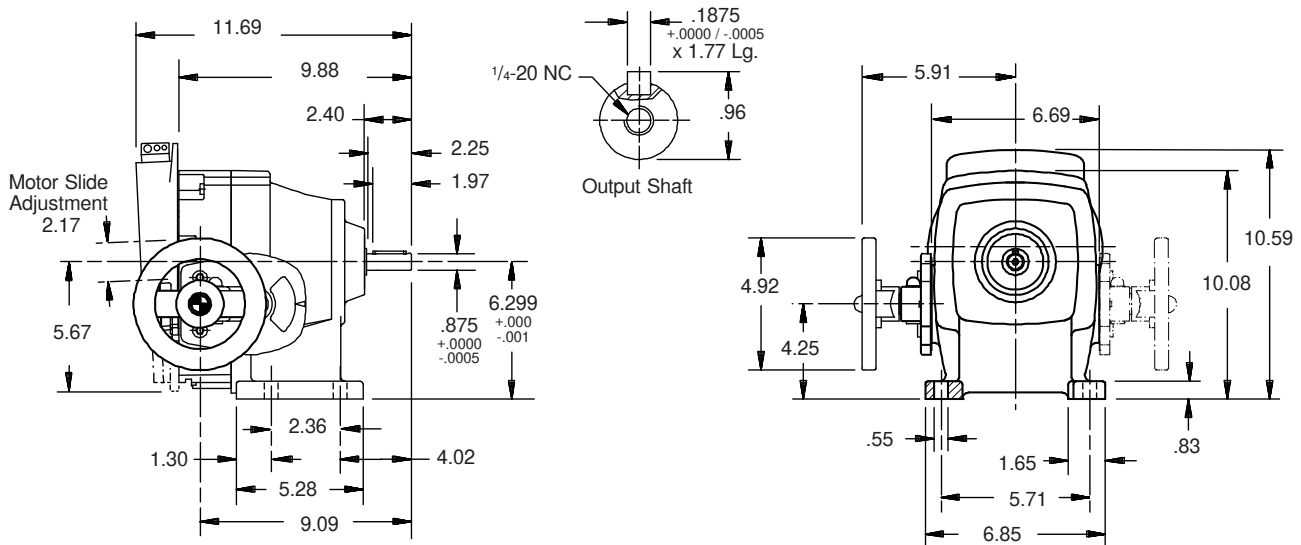
Part No. – 51 lbs.  
**TD370FK145**  
 Flange Style  
 145TC Input  
 143TC Output

Constant Horsepower Range			Constant Torque Range					
RPM <sup>(1)</sup>	MAXIMUM		TRANSITION <sup>(2)</sup>			MINIMUM		
	in.lbs.	HP	RPM <sup>(1)</sup>	in.lbs.	HP	RPM <sup>(1)</sup>	in.lbs.	HP
2,100	51	1.70	1,162	97	1.79	420	97	0.65

All ratings shown are based on 1750 RPM motor speed and are rated to provide constant torque through the entire speed range. Contact STÖBER for constant horsepower applications. **MOTOR MUST BE ORDERED SEPARATELY.**

<sup>1)</sup> Speed tolerance at rated load is ±3%. At less than rated load, minimum speed may increase 5%.

<sup>2)</sup> The ComTrac drive operates at constant horsepower above transition values and at constant torque below transition values. Note shaded area. Engineering advances may cause slight changes to the information shown.

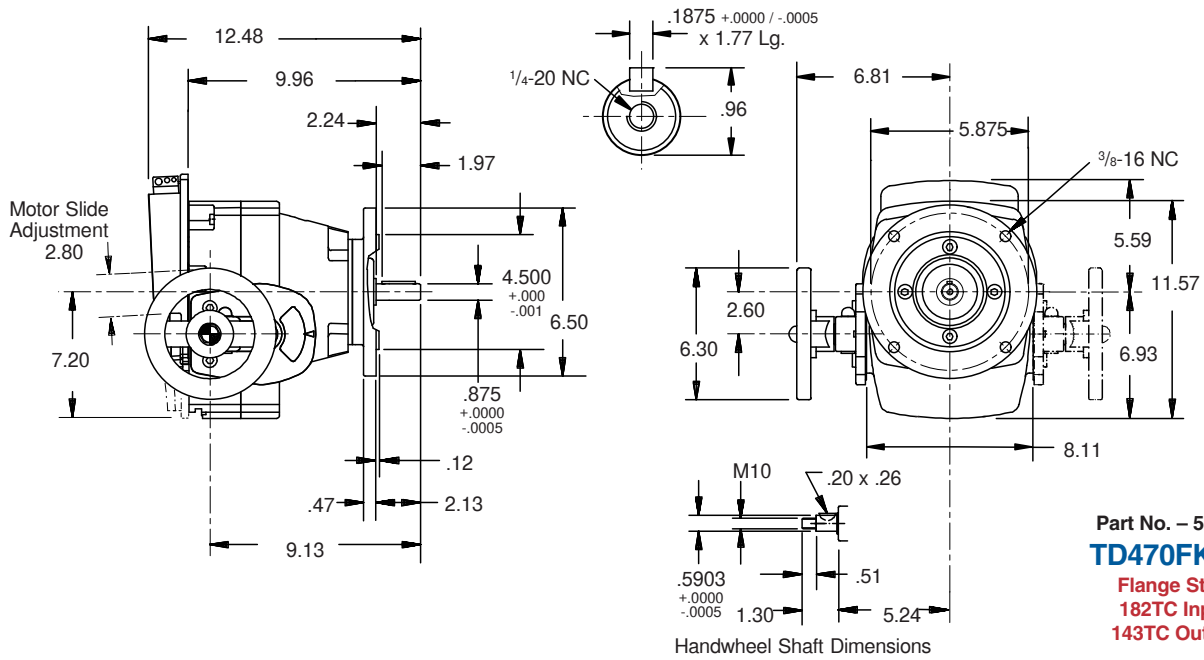


Part No. – 51 lbs.  
**TD370NK145**  
 Foot Mount  
 145TC Input



# ComTrac® Adjustable Speed Drives

## 3.0 HP @ 1750 RPM

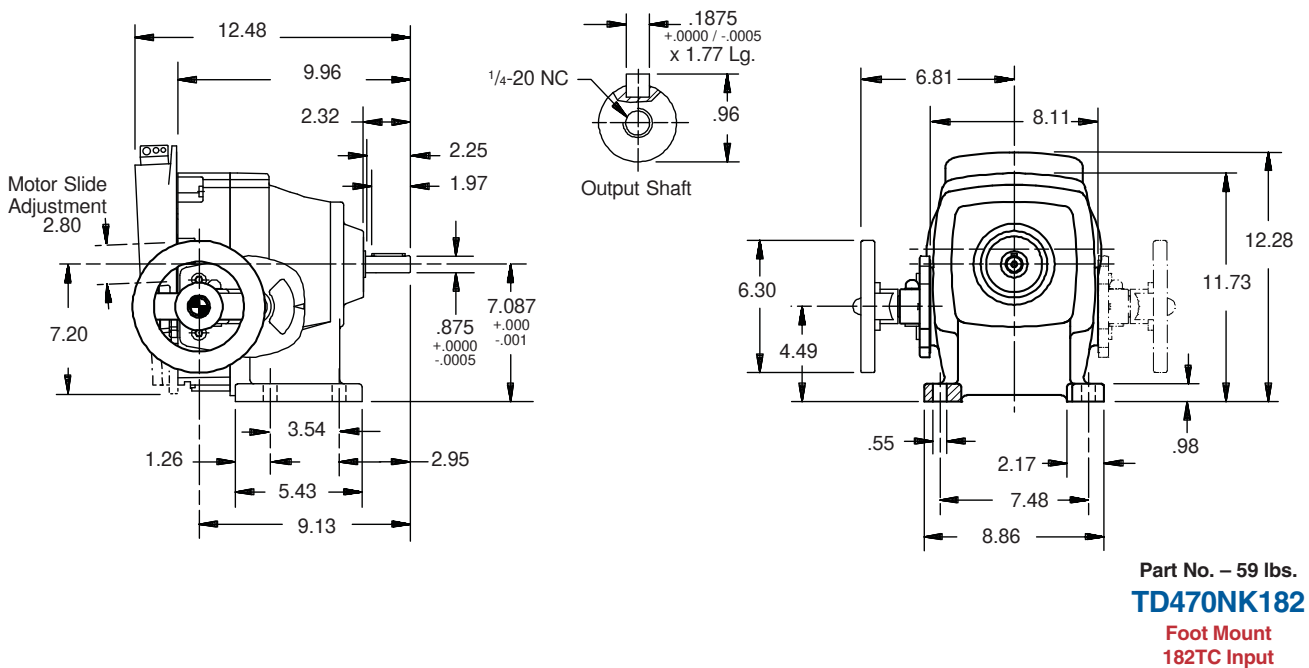


Constant Horsepower Range			Constant Torque Range					
RPM <sup>(1)</sup>	MAXIMUM		TRANSITION <sup>(2)</sup>			MINIMUM		
	in.lbs.	HP	RPM <sup>(1)</sup>	in.lbs.	HP	RPM <sup>(1)</sup>	in.lbs.	HP
2,100	81	2.70	970	177	2.72	420	177	1.18

All ratings shown are based on 1750 RPM motor speed and are rated to provide constant torque through the entire speed range. Contact STÖBER for constant horsepower applications. **MOTOR MUST BE ORDERED SEPARATELY.**

<sup>1)</sup> Speed tolerance at rated load is ±3%. At less than rated load, minimum speed may increase 5%.

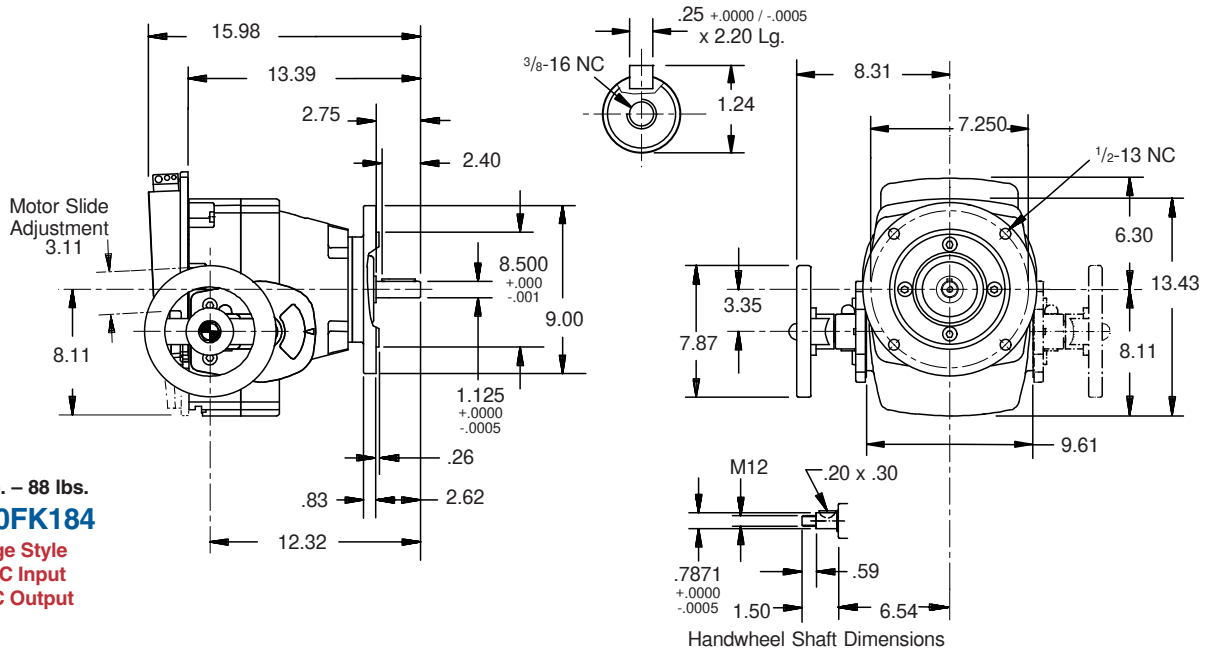
<sup>2)</sup> The ComTrac drive operates at constant horsepower above transition values and at constant torque below transition values. Note shaded area. Engineering advances may cause slight changes to the information shown.





# ComTrac® Adjustable Speed Drives

## 5.0 HP @ 1750 RPM



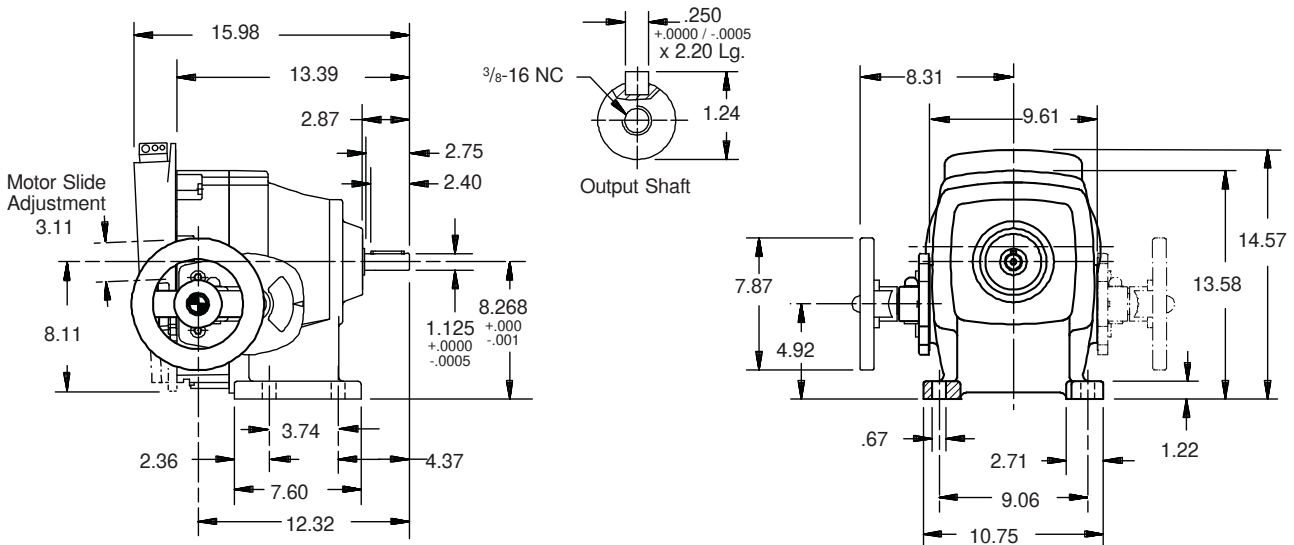
Part No. – 88 lbs.  
**TD570FK184**  
 Flange Style  
 184TC Input  
 182TC Output

Constant Horsepower Range			Constant Torque Range					
RPM <sup>(1)</sup>	MAXIMUM		TRANSITION <sup>(2)</sup>			MINIMUM		
	in.lbs.	HP	RPM <sup>(1)</sup>	in.lbs.	HP	RPM <sup>(1)</sup>	in.lbs.	HP
2,100	137	4.56	1,102	266	4.65	420	266	1.77

All ratings shown are based on 1750 RPM motor speed and are rated to provide constant torque through the entire speed range. Contact STÖBER for constant horsepower applications. **MOTOR MUST BE ORDERED SEPARATELY.**

<sup>1)</sup> Speed tolerance at rated load is ±3%. At less than rated load, minimum speed may increase 5%.

<sup>2)</sup> The ComTrac drive operates at constant horsepower above transition values and at constant torque below transition values. Note shaded area. Engineering advances may cause slight changes to the information shown.



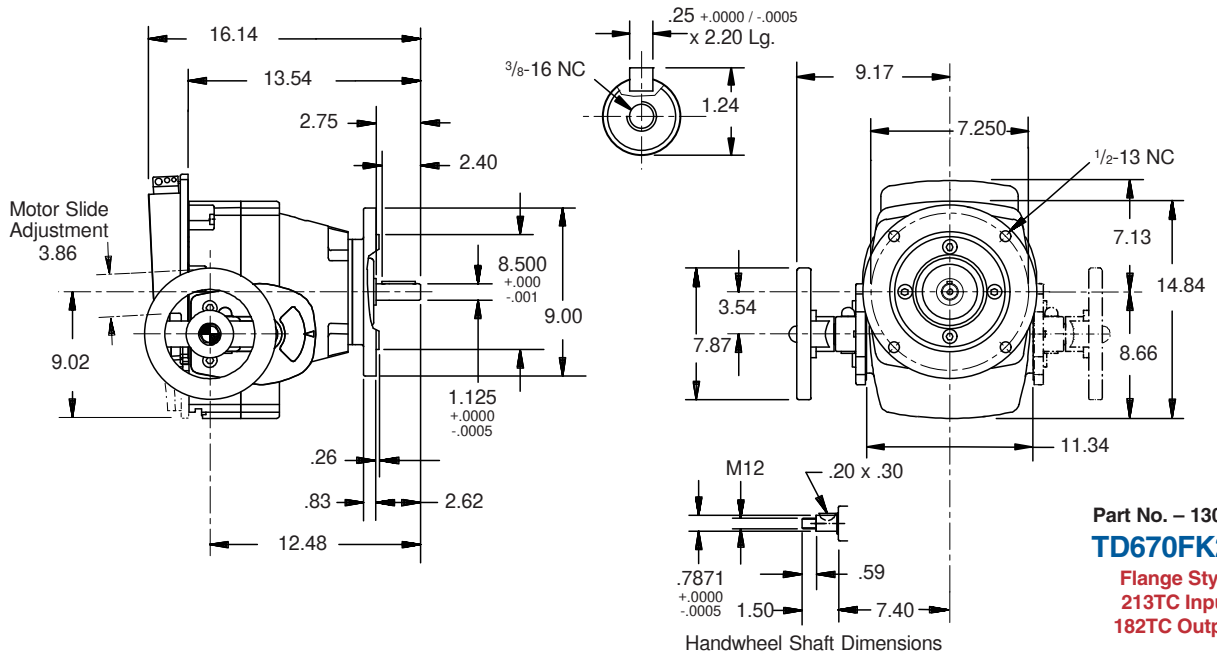
Part No. – 88 lbs.  
**TD570NK184**  
 Foot Mount  
 184TC Input





# ComTrac® Adjustable Speed Drives

## 7.5 HP @ 1750 RPM

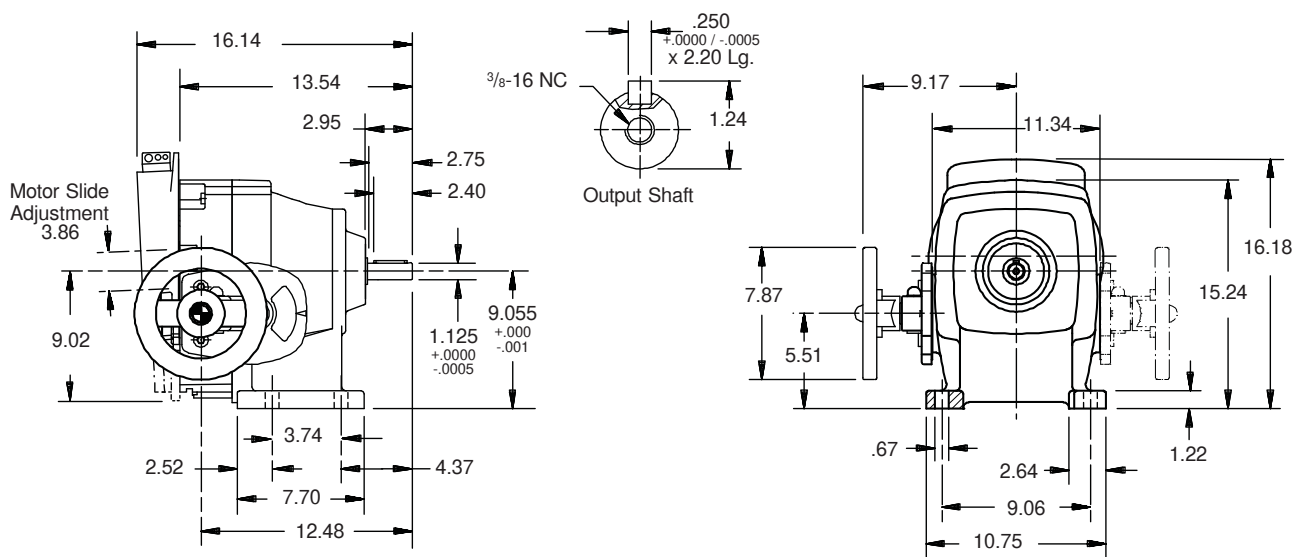


Constant Horsepower Range			Constant Torque Range					
RPM <sup>(1)</sup>	in.lbs.	HP	TRANSITION <sup>(2)</sup>			MINIMUM		
			RPM <sup>(1)</sup>	in.lbs.	HP	RPM <sup>(1)</sup>	in.lbs.	HP
2,100	206	6.86	1,216	363	7.00	420	363	2.42

All ratings shown are based on 1750 RPM motor speed and are rated to provide constant torque through the entire speed range. Contact STÖBER for constant horsepower applications. **MOTOR MUST BE ORDERED SEPARATELY.**

<sup>1)</sup> Speed tolerance at rated load is ±3%. At less than rated load, minimum speed may increase 5%.

<sup>2)</sup> The ComTrac drive operates at constant horsepower above transition values and at constant torque below transition values. Note shaded area. Engineering advances may cause slight changes to the information shown.



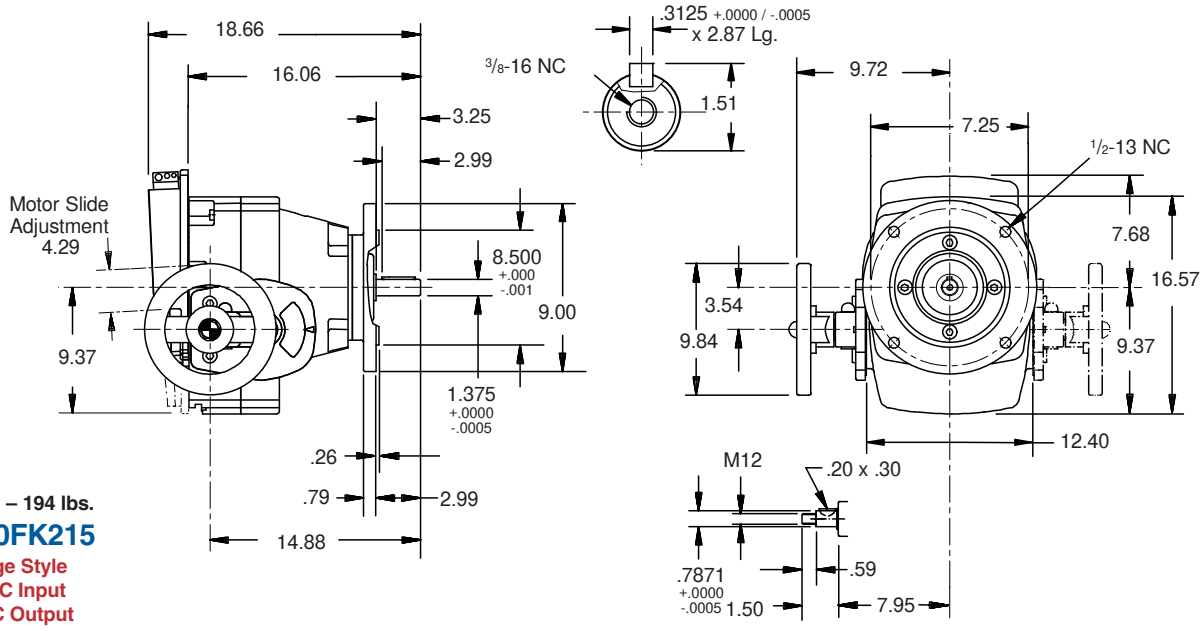
Part No. - 130 lbs.  
**TD670NK213**  
 Foot Mount  
 213TC Input





# ComTrac® Adjustable Speed Drives

## 10.0 HP @ 1750 RPM



Part No. – 194 lbs.  
**TD760FK215**  
 Flange Style  
 215TC Input  
 213TC Output

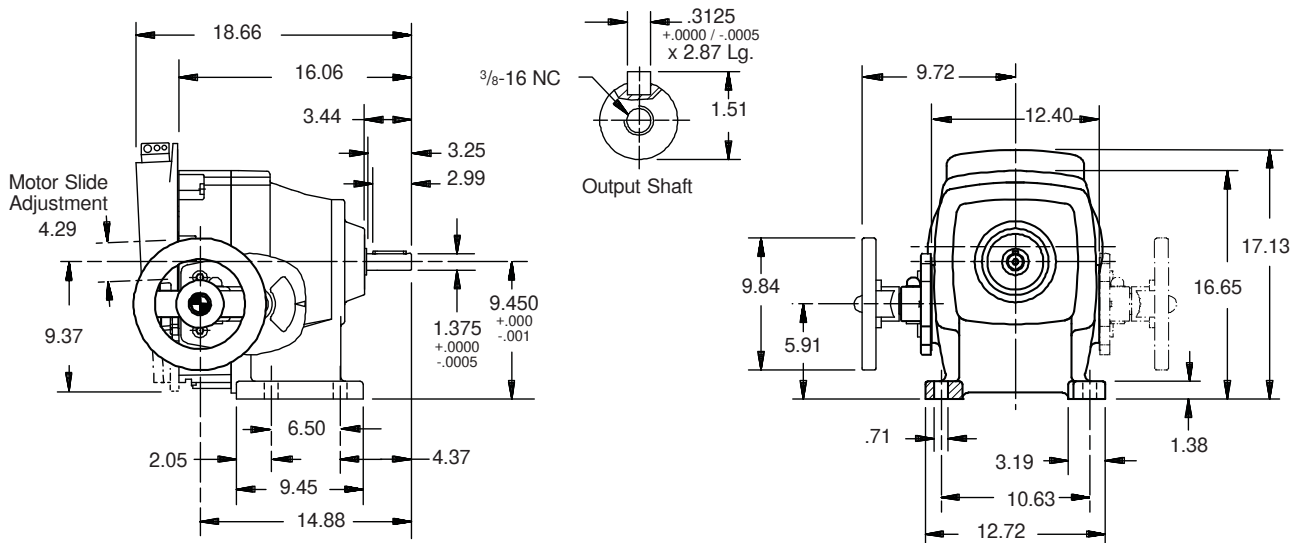
Handwheel Shaft Dimensions

Constant Horsepower Range			Constant Torque Range					
MAXIMUM			TRANSITION <sup>(2)</sup>			MINIMUM		
RPM <sup>(1)</sup>	in.lbs.	HP	RPM <sup>(1)</sup>	in.lbs.	HP	RPM <sup>(1)</sup>	in.lbs.	HP
2,160	274	9.4	1,200	496	9.4	430	496	3.3

All ratings shown are based on 1750 RPM motor speed and are rated to provide constant torque through the entire speed range. Contact STÖBER for constant horsepower applications. **MOTOR MUST BE ORDERED SEPARATELY.**

<sup>1)</sup> Speed tolerance at rated load is ±3%. At less than rated load, minimum speed may increase 5%.

<sup>2)</sup> The ComTrac drive operates at constant horsepower above transition values and at constant torque below transition values. Note shaded area. Engineering advances may cause slight changes to the information shown.



Part No. – 194 lbs.  
**TD760NK215**  
 Foot Mount  
 215TC Input