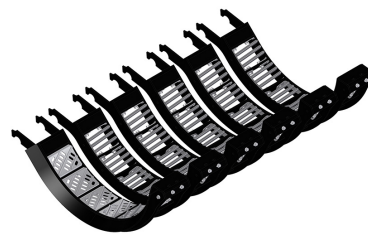
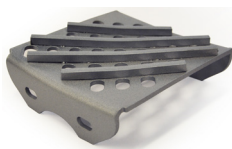


## Concaves - KX7 by Kondex

# KX7



KX7 concaves feature a patented box design, and are available for Case IH, Challenger, Gleaner, John Deere, and Massey Ferguson combines. Replaceable boxes in each assembly include unique angled bars that meet the crop head-on. This design not only results in a better thresh, but allows for increased air flow disruption that results in greater capacity for improved combine productivity. KX7 also offers the exclusive capability of replacing individual boxes for maintenance or threshing purposes, a feature that is ideal for areas with rocky soil. These concaves have been found most effective in hard-to-thresh conditions and wet or high-wear environments. Users also report KX7 to have little to no plugging over traditional concaves.

At half the width of most traditional concaves, KX7 concaves allow for greater customization of threshing configurations to specific field and crop conditions. The smaller design also allows for easier installation. KX7 concaves have been proven effective in various crops and conditions around the world.

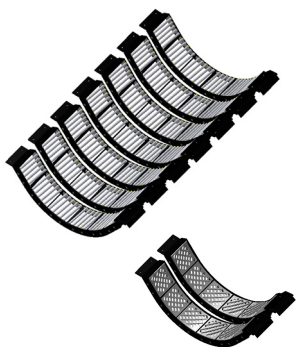
KX7 MaxThresh™ concaves come standard with our proprietary Tungstrong™ wear enhancement. MaxRound™ concaves are also reinforced with heat treated separation bars.

## Agco

CHALLENGER: 660, 660B, 670, 670B

GLEANER: A65, A66, A75, A76

MASSEY FERGUSON: 8560, 8570, 8780, 8780XP, 9520, 9690, 9695, 9790, 9795

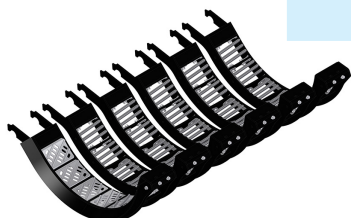


ORDER No.	DESCRIPTION	STOCK	RETAIL
716-036	Complete set of Agco KX7 concaves for standard threshing in Corn and Soybeans. Comes with 7 of BA3-R02 concave.	0057245	\$5,700.00
716-038	Complete set of Agco KX7 concaves for Tough-thresh conditions in Corn and Soybeans. Comes with 7 concaves.	0057248	\$5,700.00
716-058	ThreshStart™ Kit, replaces just the front concave for tough threshing conditions. Can be used with OEM concaves.	0005318	\$1,800.00

## Case-IH Mid Series Complete Sets

MODELS: 1680, 1682, 1688, 2188, 2377, 2388, 2577, 2588, 5088, 6088, 7088, 5130, 6130, 7130, 5140, 6140, 7140

ORDER No.	DESCRIPTION	STOCK	RETAIL
716-043	Complete set of CIH KX7 concaves for Tough-thresh conditions in Corn and Soybeans. Comes with 1 front lip, 1 front tough-thresh concave and 5 round bar concaves.	0052928	\$3,900.00



*Other kits and configurations are available, call for pricing and options.*

## Case-IH Mid Series Thresh Start™ Kits

Kondex KX7 ThreshStart™ concave kits are designed for those looking to begin gaining improved threshing and grain quality with minimal investment. ThreshStart™ kits include two rows of MaxThresh™ concaves for installation in the front, most critical threshing position. Standard concaves can be installed behind them. Additional KX7 assemblies will provide even greater results



ORDER NO.	DESCRIPTION	STOCK	RETAIL
716-063	ThreshStart™ Kit for corn and soybeans, replaces just the front concave for tough threshing conditions. Can be used with OEM concaves.	0005018	\$1,400.00
716-059	ThreshStart™ Kit for small grains and soybeans, replaces just the front concave for tough threshing conditions. Can be used with OEM concaves.	0005019	\$1,400.00

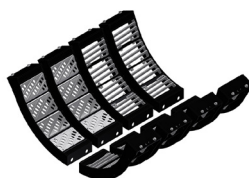
*Other kits and configurations are available, call for pricing and options.*

## Case-IH Flagship Series Complete Sets

ORDER NO.	DESCRIPTION	STOCK	RETAIL
716-048	Complete set of CIH KX7 concaves for Corn and Soybeans. Comes with RH and LH concaves. Fits models 7010AFX, 7120, 7230, 8010AFX, 8120, 8230, 9120, 9230.	0052921	\$3,900.00
716-057	Complete set of CIH KX7 concaves Corn and Soybeans. Comes with RH and LH concaves. Fits models 7240, 8240, 9240. (Front concave is without ramped design.)	0000729	\$3,600.00



716-048



716-057

## Case-IH Flagship Series Thresh™ Start Kits

ORDER NO.	DESCRIPTION	STOCK	RETAIL
716-064	ThreshStart™ Kit for corn and soybeans, replaces just the front concave for tough threshing conditions. Can be used with OEM concaves. Fits models 7010AFX, 7120, 7230, 8010AFX, 8120, 8230, 9120, 9230.	0526417	\$1,950.00
716-060	ThreshStart™ Kit for small grains replaces just the front concave for tough threshing conditions. Can be used with OEM concaves. Fits models 7010AFX, 7120, 7230, 8010AFX, 8120, 8230, 9120, 9230	0526416	\$1,950.00
716-065	ThreshStart™ Kit for corn and soybeans, replaces just the front concave for tough threshing conditions. Can be used with OEM concaves. Fits models 7240, 8240, 9240.	0057218	\$1,700.00
716-061	ThreshStart™ Kit for small grains replaces just the front concave for tough threshing conditions. Can be used with OEM concaves. Fits models 7240, 8240, 9240.	0057218	\$1,700.00



716-064



716-060



716-065



716-061

# John Deere

MODELS: S550/S650, S660, S670, S680\*, S690\*, 9650 STS, 9660 STS, 9670 STS, 9750 STS, 9760 STS, 9770 STS, 9860 STS, 9870 STS

ORDER NO.	DESCRIPTION	STOCK	RETAIL
716-053	Complete set of KX7 concaves for corn and soybeans. Includes 1 concave with Tough Thresh boxes and 5 concaves with MaxRound boxes.	0000338	\$4,400.00
716-066	ThreshStart™ Kit for corn and soybeans, replaces just the front concave for tough threshing conditions. Can be used with OEM concaves.	0052118	\$1,500.00
716-062	ThreshStart™ Kit for small grains and soybeans, replaces just the front concave for tough threshing conditions. Can be used with OEM concaves.	0052118	\$1,500.00
GF12-1003	Concave adjustment actuator. Fits John Deere combines 9400, 9410, 9450, 9500, 9500SH, 9510, 9510SH, 9550, 9560, 9560SH, 9600, 9610, 9650, 9650CTS, 9660, 9660CTS, CTSII with cast iron cam.	006359	\$670.00

*Other kits and configurations are available, call for pricing and options.*



716-053



716-066



716-062



Photo is representative not an actual photo of this part.

*Kondex KX7 ThreshStart™ concave kits are designed for those looking to begin gaining improved threshing and grain quality with minimal investment. ThreshStart™ kits include two rows of MaxThresh™ concaves for installation in the front, most critical threshing position. Standard concaves can be installed behind them. Additional KX7 assemblies will provide even greater results*

## Replacement Parts for KX7 Concaves

ORDER NO.	DESCRIPTION	STOCK	RETAIL
BB6-R02	MaxRound™ Box, front concave on CIH Flagship with ramped design and all positions on John Deere.	00848	\$60.00
BB6-X04	MaxThresh™ Box, front concave on CIH Flagship with ramped design and all positions on John Deere.	02158	\$64.00
BB7-R02	MaxRound™ Box, mid and rear concaves, CIH Flagship. Also front concaves without ramped design.	00068	\$75.00
BB7-X04	MaxThresh™ Box, mid and rear concaves, CIH Flagship. Also front concaves without ramped design.	00064	\$75.00
BB8-R02	MaxRound™ Box for AGCO.	02361	\$79.00
BB8-X04	MaxThresh™ Box for AGCO.	02763	\$84.00
BA1-L01	Front lip for concaves on Case-IH Mid series models.	086118	\$146.00
BA2-L01	Front lip for concaves on John Deere.	086118	\$146.00



MaxRound™ Box



MaxThresh™ Box



Front Lip

# Feed Accelerator Wear Plate for John Deere

ORDER NO.	DESCRIPTION	STOCK	RETAIL
P165407	Notched wear plate, heat treated, with hardware. Fits corn/grain accelerator on John Deere combines 9560STS, 9570STS, 9650STS, 9660STS, 9670STS, 9750STS, 9760STS, 9770STS, 9860STS, 9870STS, S650, S660, S670, S680, S690 (30 used); S550 (25 used). Fits corn discharge beater on 9870STS, S680, S690 (30 used). Replaces JD no. H165407.	7099	\$12.95

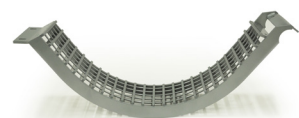
## OEM Style Concaves

### Agco

CHALLENGER: 520C, 660, 660B, 670, 670B

GLENER: A65, A66, A75, A76

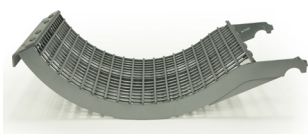
MASSEY FERGUSON: 8560, 8570, 8780, 8780XP, 9520, 9690, 9695, 9790, 9795



ORDER NO.	DESCRIPTION	STOCK	RETAIL
MLS-U02	Concave, Large wire (1/4" wire). 7 used per machine. Replaces 104904W91	524739	\$499.00
MSS-U01	Concave for small grains. Replaces 71390005.	524048	\$539.00

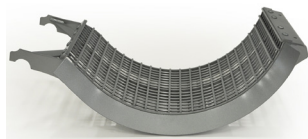
### Case-IH Mid Series

MODELS: 1440, 1460, 1470

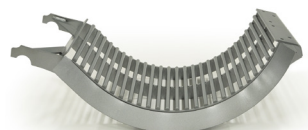


ORDER NO.	DESCRIPTION	STOCK	RETAIL
CSS-F03	Front Concave, small wire. Replaces 1309208C3.	571449	\$589.00
CSS-U03	Middle/Rear Concave, small wire. Replaces 1309210C3.	005048	\$540.00
CLS-F01	Front Concave, large wire. Replaces 1302606C5.	524739	\$499.00
CLS-U01	Middle/Rear Concave, large wire. Replaces 1302607C4.	052239	\$430.00

MODELS: 1640, 1644, 1660, 1666, 1670, 2144, 2166, 2366



ORDER NO.	DESCRIPTION	STOCK	RETAIL
CSS-F04	Front Concave, small wire. Replaces 430960A1.	571448	\$589.00
CSS-U04	Middle/Rear Concave, small wire. Replaces 430963A1.	521739	\$495.00
CLS-F02	Front Concave, large wire. Replaces 430964A1.	578739	\$505.00
CLS-U02	Middle/Rear Concave, large wire. Replaces 430965A1.	051638	\$482.00
CRS-F01	Front Concave, round bar. Replaces 47402820.	524138	\$419.00
CRS-U01	Middle/Rear Concave, round bar. Replaces 47402821.	005528	\$340.00



## Case-IH Mid Series continued..

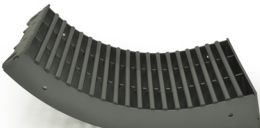
MODELS: 1680, 1682, 1688, 2188, 2377, 2388, 2577, 2588, 5088, 5130, 5140, 6088, 6130, 6140, 7088, 7130, 7140



ORDER No.	DESCRIPTION	STOCK	RETAIL
CSS-F02	Front Concave, small wire. Replaces 418647A1.	009158	\$692.00
CSS-U02	Middle/Rear Concave, small wire. Replaces 418648A1.	576249	\$569.00
CLS-F03	Front Concave, large wire. Replaces 418645A1.	576459	\$729.00
CLS-U03	Middle/Rear Concave, large wire. Replaces 418646A1.	523448	\$591.00
CRS-F02	Front Concave, round bar. Replaces 84600009.	057938	\$530.00
CRS-U02	Middle/Rear Concave, round bar. Replaces 84600010.	524738	\$499.00

## Case-IH Flagship

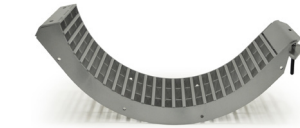
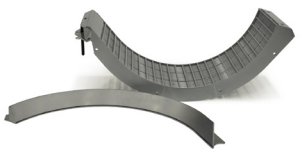
MODELS: 7010AFX, 7120, 7230, 7240, 8010AFX, 8120, 8230, 8240, 9120, 9230, 9240



ORDER No.	DESCRIPTION	STOCK	RETAIL
CSS-L01	Small wire HT concave, Left side. Replaces 84563345.	576244	\$569.00
CSS-R01	Small wire HT concave, Right side. Replaces 84563344.	576248	\$569.00
CLS-L04	Large wire concave, Left side. Replaces 84237556.	576339	\$449.00
CLS-R04	Large wire concave, Right side. Replaces 84237555.	000336	\$440.00
CRS-L01	Round bar concave, Left side. Replaces 84247323.	529629	\$359.00
CRS-R01	Round bar concave, Right side. Replaces 84247324.	529624	\$359.00

## John Deere

MODELS: S550/S650, S660, S670, S680, S690, S760, S770, S780, S790, 9650 STS, 9660 STS, 9670 STS, 9750 STS, 9760 STS, 9770 STS, 9860 STS, 9870 STS



ORDER No.	DESCRIPTION	STOCK	RETAIL
JSS-F01	Front Concave, small wire. Replaces AH205254.	000369	\$840.00
JSS-U01	Middle/Rear Concave, small wire. Replaces AH205255.	000158	\$680.00
JLS-F01	Front Concave, large wire. Replaces AH205259.	000758	\$760.00
JLS-U01	Middle/Rear Concave, large wire. Replaces AH205260.	529448	\$599.00
JRS-F01	Front Concave, round bar. Replaces AH205261.	055358	\$714.00
JRS-U01	Middle/Rear Concave, round bar. Replaces AH206456.	524738	\$499.00