

Concepts of Biology



1 | INTRODUCTION TO BIOLOGY



Figure 1.1 This NASA image is a composite of several satellite-based views of Earth. To make the whole-Earth image, NASA scientists combine observations of different parts of the planet. (credit: modification of work by NASA)

Chapter Outline

1.1: Themes and Concepts of Biology

1.2: The Process of Science

Introduction

Viewed from space, Earth (**Figure 1.1**) offers few clues about the diversity of life forms that reside there. The first forms of life on Earth are thought to have been microorganisms that existed for billions of years before plants and animals appeared. The mammals, birds, and flowers so familiar to us are all relatively recent, originating 130 to 200 million years ago. Humans have inhabited this planet for only the last 2.5 million years, and only in the last 200,000 years have humans started looking like we do today.

1.1 | Themes and Concepts of Biology

By the end of this section, you will be able to:

- Identify and describe the properties of life
- Describe the levels of organization among living things
- List examples of different sub disciplines in biology

Biology is the science that studies life. What exactly is life? This may sound like a silly question with an obvious answer, but it is not easy to define life. For example, a branch of biology called virology studies viruses, which exhibit some of the characteristics of living entities but lack others. It turns out that although viruses can attack living organisms, cause diseases, and even reproduce, they do not meet the criteria that biologists use to define life.

From its earliest beginnings, biology has wrestled with four questions: What are the shared properties that make something “alive”? How do those various living things function? When faced with the remarkable diversity of life, how do we organize the different kinds of organisms so that we can better understand them? And, finally—what biologists ultimately seek to understand—how did this diversity arise and how is it continuing? As new organisms are discovered every day, biologists continue to seek answers to these and other questions.

Properties of Life

All groups of living organisms share several key characteristics or functions: order, sensitivity or response to stimuli, reproduction, adaptation, growth and development, regulation, homeostasis, and energy processing. When viewed together, these eight characteristics serve to define life.

Order

Organisms are highly organized structures that consist of one or more cells. Even very simple, single-celled organisms are remarkably complex. Inside each cell, atoms make up molecules. These in turn make up cell components or organelles. Multicellular organisms, which may consist of millions of individual cells, have an advantage over single-celled organisms in that their cells can be specialized to perform specific functions, and even sacrificed in certain situations for the good of the organism as a whole. How these specialized cells come together to form organs such as the heart, lung, or skin in organisms like the toad shown in **Figure 1.2** will be discussed later.



Figure 1.2 A toad represents a highly organized structure consisting of cells, tissues, organs, and organ systems. (credit: "Ivengo(RUS)"/Wikimedia Commons)

Sensitivity or Response to Stimuli

Organisms respond to diverse stimuli. For example, plants can bend toward a source of light or respond to touch (**Figure 1.3**). Even tiny bacteria can move toward or away from chemicals (a process called chemotaxis) or light (phototaxis). Movement toward a stimulus is considered a positive response, while movement away from a stimulus is considered a negative response.



Figure 1.3 The leaves of this sensitive plant (*Mimosa pudica*) will instantly droop and fold when touched. After a few minutes, the plant returns to its normal state. (credit: Alex Lomas)



Watch this **video** (<http://openstaxcollege.org/l/thigmonasty>) to see how the sensitive plant responds to a touch stimulus.

Reproduction

Single-celled organisms reproduce by first duplicating their DNA, which is the genetic material, and then dividing it equally as the cell prepares to divide to form two new cells. Many multicellular organisms (those made up of more than one cell) produce specialized reproductive cells that will form new individuals. When reproduction occurs, DNA containing genes is passed along to an organism's offspring. These genes are the reason that the offspring will belong to the same species and will have characteristics similar to the parent, such as fur color and blood type.

Adaptation

All living organisms exhibit a “fit” to their environment. Biologists refer to this fit as adaptation and it is a consequence of evolution by natural selection, which operates in every lineage of reproducing organisms. Examples of adaptations are diverse and unique, from heat-resistant Archaea that live in boiling hot springs to the tongue length of a nectar-feeding moth that matches the size of the flower from which it feeds. All adaptations enhance the reproductive potential of the individual exhibiting them, including their ability to survive to reproduce. Adaptations are not constant. As an environment changes, natural selection causes the characteristics of the individuals in a population to track those changes.

Growth and Development

Organisms grow and develop according to specific instructions coded for by their genes. These genes provide instructions that will direct cellular growth and development, ensuring that a species' young (**Figure 1.4**) will grow up to exhibit many of the same characteristics as its parents.



Figure 1.4 Although no two look alike, these kittens have inherited genes from both parents and share many of the same characteristics. (credit: Pieter & Renée Lanser)

Regulation

Even the smallest organisms are complex and require multiple regulatory mechanisms to coordinate internal functions, such as the transport of nutrients, response to stimuli, and coping with environmental stresses. For example, organ systems such as the digestive or circulatory systems perform specific functions like carrying oxygen throughout the body, removing wastes, delivering nutrients to every cell, and cooling the body.

Homeostasis

To function properly, cells require appropriate conditions such as proper temperature, pH, and concentrations of diverse chemicals. These conditions may, however, change from one moment to the next. Organisms are able to maintain internal conditions within a narrow range almost constantly, despite environmental changes, through a process called **homeostasis** or “steady state”—the ability of an organism to maintain constant internal conditions. For example, many organisms regulate their body temperature in a process known as thermoregulation. Organisms that live in cold climates, such as the polar bear (**Figure 1.5**), have body structures that help them withstand low temperatures and conserve body heat. In hot climates, organisms have methods (such as perspiration in humans or panting in dogs) that help them to shed excess body heat.



Figure 1.5 Polar bears and other mammals living in ice-covered regions maintain their body temperature by generating heat and reducing heat loss through thick fur and a dense layer of fat under their skin. (credit: "longhorndave"/Flickr)

Energy Processing

All organisms (such as the California condor shown in **Figure 1.6**) use a source of energy for their metabolic activities. Some organisms capture energy from the Sun and convert it into chemical energy in food; others use chemical energy from molecules they take in.

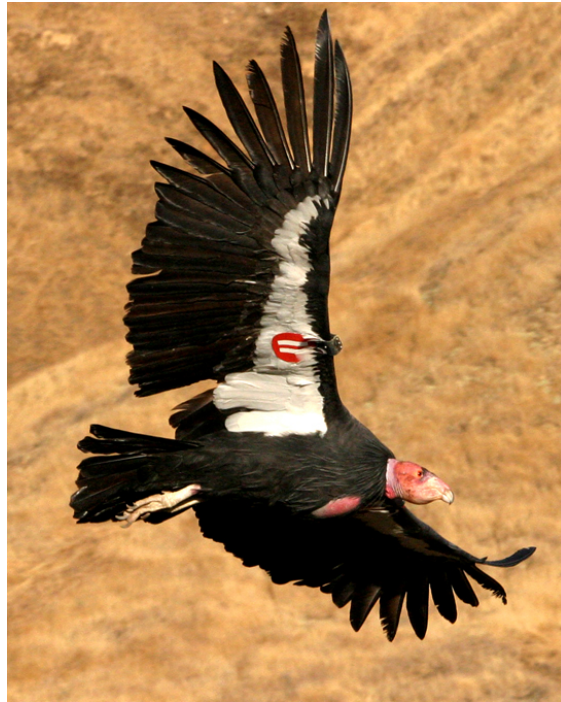


Figure 1.6 A lot of energy is required for a California condor to fly. Chemical energy derived from food is used to power flight. California condors are an endangered species; scientists have strived to place a wing tag on each bird to help them identify and locate each individual bird. (credit: Pacific Southwest Region U.S. Fish and Wildlife)

Levels of Organization of Living Things

Living things are highly organized and structured, following a hierarchy on a scale from small to large. The **atom** is the smallest and most fundamental unit of matter. It consists of a nucleus surrounded by electrons. Atoms form molecules. A **molecule** is a chemical structure consisting of at least two atoms held together by a chemical bond. Many molecules that are biologically important are **macromolecules**, large molecules that are typically formed by combining smaller units called monomers. An example of a macromolecule is deoxyribonucleic acid (DNA) (**Figure 1.7**), which contains the instructions for the functioning of the organism that contains it.

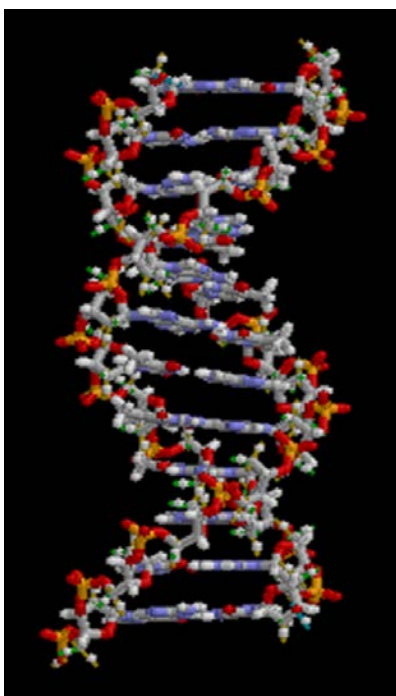


Figure 1.7 A molecule, like this large DNA molecule, is composed of atoms. (credit: "Brian0918"/Wikimedia Commons)



To see an animation of this DNA molecule, click [here \(http://openstaxcollege.org/l/rotating_DNA2\)](http://openstaxcollege.org/l/rotating_DNA2).

Some cells contain aggregates of macromolecules surrounded by membranes; these are called **organelles**. Organelles are small structures that exist within cells and perform specialized functions. All living things are made of cells; the **cell** itself is the smallest fundamental unit of structure and function in living organisms. (This requirement is why viruses are not considered living: they are not made of cells. To make new viruses, they have to invade and hijack a living cell; only then can they obtain the materials they need to reproduce.) Some organisms consist of a single cell and others are multicellular. Cells are classified as prokaryotic or eukaryotic. **Prokaryotes** are single-celled organisms that lack organelles surrounded by a membrane and do not have nuclei surrounded by nuclear membranes; in contrast, the cells of **eukaryotes** do have membrane-bound organelles and nuclei.

In most multicellular organisms, cells combine to make **tissues**, which are groups of similar cells carrying out the same function. **Organs** are collections of tissues grouped together based on a common function. Organs are present not only in animals but also in plants. An **organ system** is a higher level of organization that consists of functionally related organs. For example vertebrate animals have many organ systems, such as the circulatory system that transports blood throughout the body and to and from the lungs; it includes organs such as the heart and blood vessels. **Organisms** are individual living entities. For example, each tree in a forest is an organism. Single-celled prokaryotes and single-celled eukaryotes are also considered organisms and are typically referred to as microorganisms.

art CONNECTION

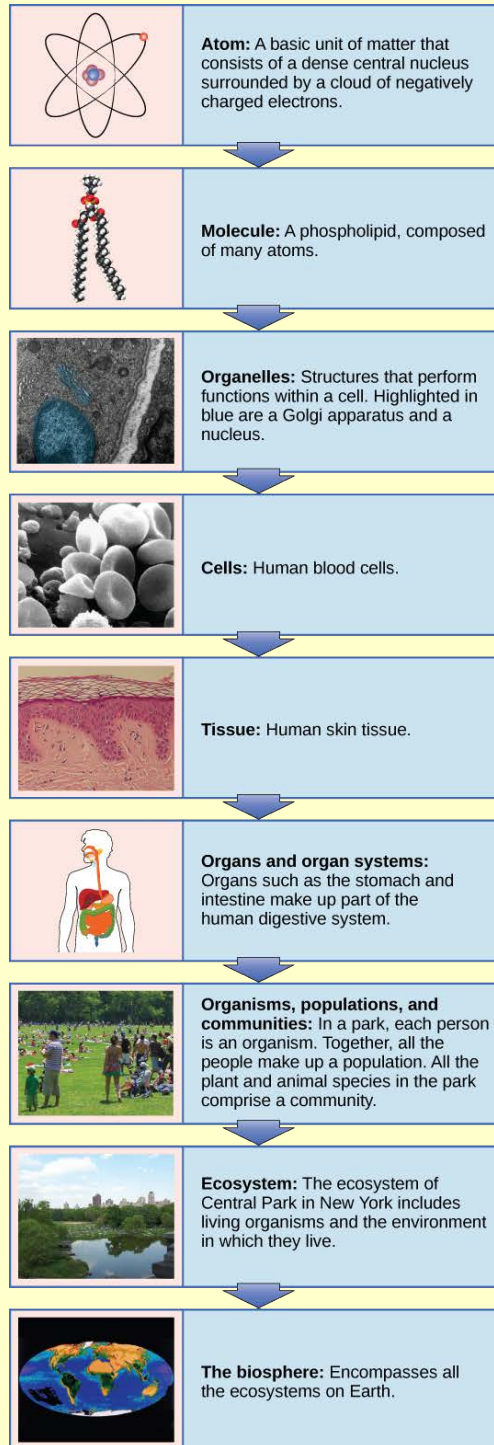


Figure 1.8 From an atom to the entire Earth, biology examines all aspects of life. (credit "molecule": modification of work by Jane Whitney; credit "organelles": modification of work by Louisa Howard; credit "cells": modification of work by Bruce Wetzel, Harry Schaefer, National Cancer Institute; credit "tissue": modification of work by "Kilbad"/Wikimedia Commons; credit "organs": modification of work by Mariana Ruiz Villareal, Joaquim Alves Gaspar; credit "organisms": modification of work by Peter Dutton; credit "ecosystem": modification of work by "gigi4791"/Flickr; credit "biosphere": modification of work by NASA)

Which of the following statements is false?

- Tissues exist within organs which exist within organ systems.
- Communities exist within populations which exist within ecosystems.
- Organelles exist within cells which exist within tissues.
- Communities exist within ecosystems which exist in the biosphere.

All the individuals of a species living within a specific area are collectively called a **population**. For example, a forest may include many white pine trees. All of these pine trees represent the population of white pine trees in this forest. Different populations may live in the same specific area. For example, the forest with the pine trees includes populations of flowering plants and also insects and microbial populations. A **community** is the set of populations inhabiting a particular area. For instance, all of the trees, flowers, insects, and other populations in a forest form the forest's community. The forest itself is an ecosystem. An **ecosystem** consists of all the living things in a particular area together with the abiotic, or non-living, parts of that environment such as nitrogen in the soil or rainwater. At the highest level of organization (**Figure 1.8**), the **biosphere** is the collection of all ecosystems, and it represents the zones of life on Earth. It includes land, water, and portions of the atmosphere.

The Diversity of Life

The science of biology is very broad in scope because there is a tremendous diversity of life on Earth. The source of this diversity is **evolution**, the process of gradual change during which new species arise from older species. Evolutionary biologists study the evolution of living things in everything from the microscopic world to ecosystems.

In the 18th century, a scientist named Carl Linnaeus first proposed organizing the known species of organisms into a hierarchical taxonomy. In this system, species that are most similar to each other are put together within a grouping known as a genus. Furthermore, similar genera (the plural of genus) are put together within a family. This grouping continues until all organisms are collected together into groups at the highest level. The current taxonomic system now has eight levels in its hierarchy, from lowest to highest, they are: species, genus, family, order, class, phylum, kingdom, domain. Thus species are grouped within genera, genera are grouped within families, families are grouped within orders, and so on (**Figure 1.9**).

DOMAIN Eukarya	Dog	Wolf	Coyote	Fox	Lion	Mouse	Whale	Fish	Earthworm	Paramecium
KINGDOM Animalia	Dog	Wolf	Coyote	Fox	Lion	Mouse	Whale	Fish	Earthworm	
PHYLUM Chordata	Dog	Wolf	Coyote	Fox	Lion	Mouse	Whale	Fish		
CLASS Mammalia	Dog	Wolf	Coyote	Fox	Lion	Mouse	Whale			
ORDER Carnivora	Dog	Wolf	Coyote	Fox	Lion					
FAMILY Canidae	Dog	Wolf	Coyote	Fox						
GENUS Canis	Dog	Wolf	Coyote							
SPECIES <i>Canis lupus</i>	Dog	Wolf								

Figure 1.9 This diagram shows the levels of taxonomic hierarchy for a dog, from the broadest category—domain—to the most specific—species.

The highest level, domain, is a relatively new addition to the system since the 1990s. Scientists now recognize three domains of life, the Eukarya, the Archaea, and the Bacteria. The domain Eukarya contains organisms that have cells with nuclei. It includes the kingdoms of fungi, plants, animals, and several kingdoms of protists. The Archaea, are single-celled organisms without nuclei and include many extremophiles that live in harsh environments like hot springs. The Bacteria are another quite different group of single-celled organisms without nuclei (**Figure 1.10**). Both the Archaea and the Bacteria are prokaryotes, an informal name for cells without nuclei. The recognition in the 1990s that certain “bacteria,” now known as the Archaea, were as different genetically and biochemically from other bacterial cells as they were from eukaryotes, motivated the recommendation to divide life into three domains. This dramatic change in our knowledge of the tree of life demonstrates that classifications are not permanent and will change when new information becomes available.

In addition to the hierarchical taxonomic system, Linnaeus was the first to name organisms using two unique names, now called the binomial naming system. Before Linnaeus, the use of common names to refer to organisms caused confusion because there were regional differences in these common names. Binomial names consist of the genus name (which is capitalized) and the species name (all lower-case). Both names are set in italics when they are printed. Every species is given a unique binomial which is recognized the world over, so that a scientist in any location can know which organism is being referred to. For example, the North American blue jay is known uniquely as *Cyanocitta cristata*. Our own species is *Homo sapiens*.

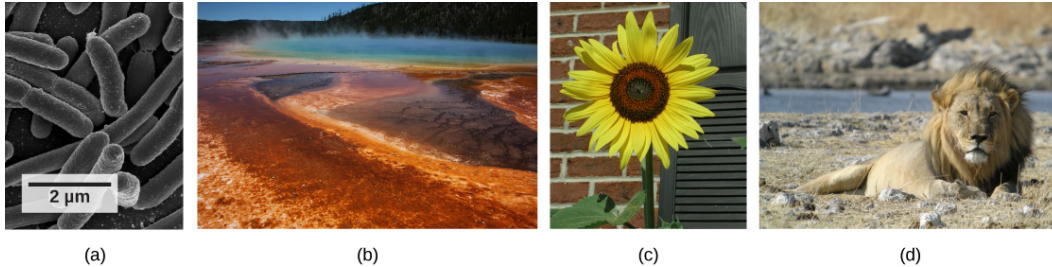


Figure 1.10 These images represent different domains. The scanning electron micrograph shows (a) bacterial cells belong to the domain Bacteria, while the (b) extremophiles, seen all together as colored mats in this hot spring, belong to domain Archaea. Both the (c) sunflower and (d) lion are part of domain Eukarya. (credit a: modification of work by Rocky Mountain Laboratories, NIAID, NIH; credit b: modification of work by Steve Jurvetson; credit c: modification of work by Michael Arrighi; credit d: modification of work by Frank Vassen)

evolution IN ACTION

Carl Woese and the Phylogenetic Tree

The evolutionary relationships of various life forms on Earth can be summarized in a phylogenetic tree. A **phylogenetic tree** is a diagram showing the evolutionary relationships among biological species based on similarities and differences in genetic or physical traits or both. A phylogenetic tree is composed of branch points, or nodes, and branches. The internal nodes represent ancestors and are points in evolution when, based on scientific evidence, an ancestor is thought to have diverged to form two new species. The length of each branch can be considered as estimates of relative time.

In the past, biologists grouped living organisms into five kingdoms: animals, plants, fungi, protists, and bacteria. The pioneering work of American microbiologist Carl Woese in the early 1970s has shown, however, that life on Earth has evolved along three lineages, now called domains—Bacteria, Archaea, and Eukarya. Woese proposed the domain as a new taxonomic level and Archaea as a new domain, to reflect the new phylogenetic tree (**Figure 1.11**). Many organisms belonging to the Archaea domain live under extreme conditions and are called extremophiles. To construct his tree, Woese used genetic relationships rather than similarities based on morphology (shape). Various genes were used in phylogenetic studies. Woese's tree was constructed from comparative sequencing of the genes that are universally distributed, found in some slightly altered form in every organism, conserved (meaning that these genes have remained only slightly changed throughout evolution), and of an appropriate length.

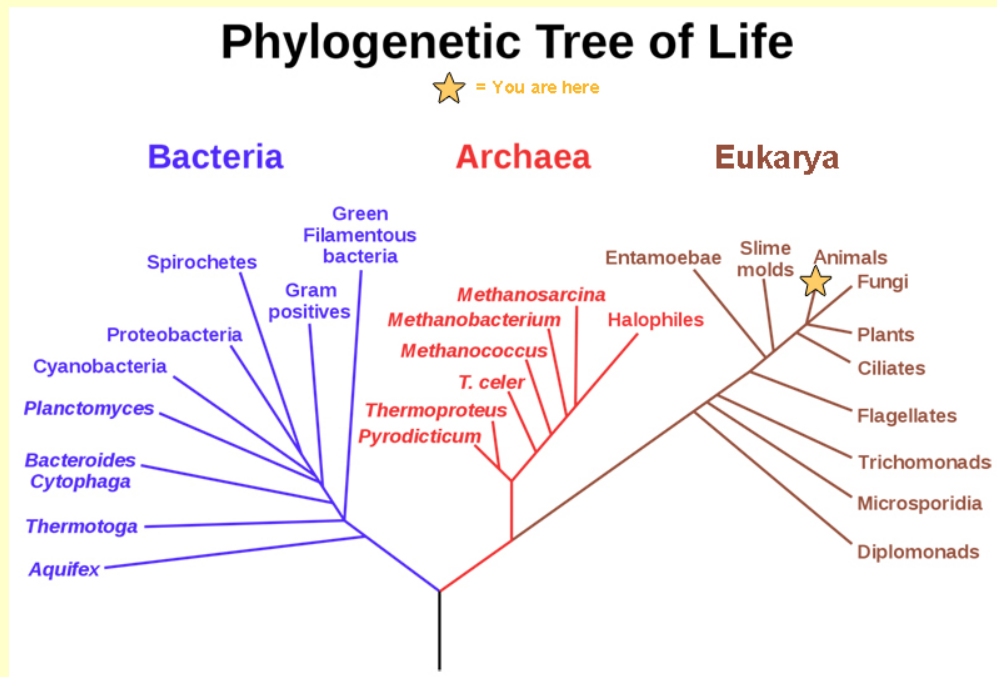


Figure 1.11 This phylogenetic tree was constructed by microbiologist Carl Woese using genetic relationships. The tree shows the separation of living organisms into three domains: Bacteria, Archaea, and Eukarya. Bacteria and Archaea are organisms without a nucleus or other organelles surrounded by a membrane and, therefore, are prokaryotes. (credit: modification of work by Eric Gaba)

Branches of Biological Study

The scope of biology is broad and therefore contains many branches and sub disciplines. Biologists may pursue one of those sub disciplines and work in a more focused field. For instance, molecular biology studies biological processes at the molecular level, including interactions among molecules such as DNA, RNA, and proteins, as well as the way they are regulated. Microbiology is the study of the structure and function of microorganisms. It is quite a broad branch itself, and depending on the subject of study, there are also microbial physiologists, ecologists, and geneticists, among others.

Another field of biological study, neurobiology, studies the biology of the nervous system, and although it is considered a branch of biology, it is also recognized as an interdisciplinary field of study known as neuroscience. Because of its interdisciplinary nature, this sub discipline studies different functions of the nervous system using molecular, cellular, developmental, medical, and computational approaches.



Figure 1.12 Researchers work on excavating dinosaur fossils at a site in Castellón, Spain. (credit: Mario Modesto)

Paleontology, another branch of biology, uses fossils to study life's history (**Figure 1.12**). Zoology and botany are the study of animals and plants, respectively. Biologists can also specialize as biotechnologists, ecologists, or physiologists, to name just a few areas. Biotechnologists apply the knowledge of biology to create useful products. Ecologists study the interactions of organisms in their environments. Physiologists study the workings of cells, tissues and organs. This is just a small sample of the many fields that biologists can pursue. From our own bodies to the world we live in, discoveries in biology can affect us in very direct and important ways. We depend on these discoveries for our health, our food sources, and the benefits provided by our ecosystem. Because of this, knowledge of biology can benefit us in making decisions in our day-to-day lives.

The development of technology in the twentieth century that continues today, particularly the technology to describe and manipulate the genetic material, DNA, has transformed biology. This transformation will allow biologists to continue to understand the history of life in greater detail, how the human body works, our human origins, and how humans can survive as a species on this planet despite the stresses caused by our increasing numbers. Biologists continue to decipher huge mysteries about life suggesting that we have only begun to understand life on the planet, its history, and our relationship to it. For this and other reasons, the knowledge of biology gained through this textbook and other printed and electronic media should be a benefit in whichever field you enter.

careers IN ACTION

Forensic Scientist

Forensic science is the application of science to answer questions related to the law. Biologists as well as chemists and biochemists can be forensic scientists. Forensic scientists provide scientific evidence for use in courts, and their job involves examining trace material associated with crimes. Interest in forensic science has increased in the last few years, possibly because of popular television shows that feature forensic scientists on the job. Also, the development of molecular techniques and the establishment of DNA databases have updated the types of work that forensic scientists can do. Their job activities are primarily related to crimes against people such as murder, rape, and assault. Their work involves analyzing samples such as hair, blood, and other body fluids and also processing DNA (Figure 1.13) found in many different environments and materials. Forensic scientists also analyze other biological evidence left at crime scenes, such as insect parts or pollen grains. Students who want to pursue careers in forensic science will most likely be required to take chemistry and biology courses as well as some intensive math courses.



Figure 1.13 This forensic scientist works in a DNA extraction room at the U.S. Army Criminal Investigation Laboratory. (credit: U.S. Army CID Command Public Affairs)

1.2 | The Process of Science

By the end of this section, you will be able to:

- Identify the shared characteristics of the natural sciences
- Understand the process of scientific inquiry
- Compare inductive reasoning with deductive reasoning
- Describe the goals of basic science and applied science

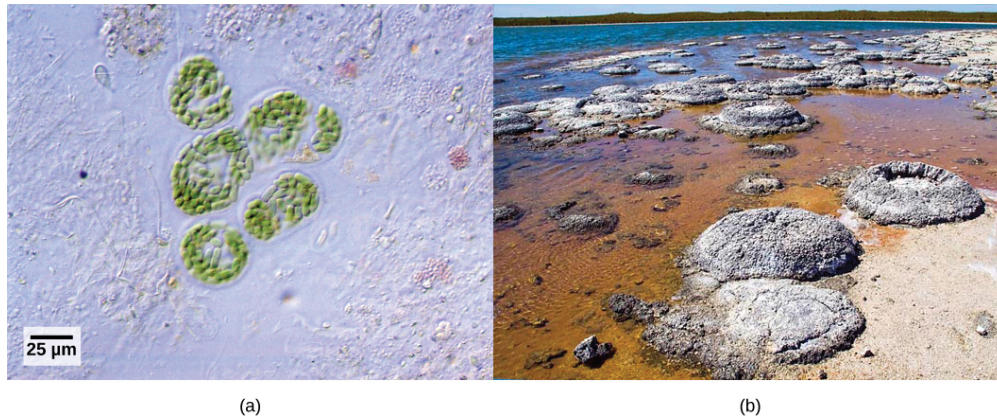


Figure 1.14 Formerly called blue-green algae, the (a) cyanobacteria seen through a light microscope are some of Earth's oldest life forms. These (b) stromatolites along the shores of Lake Thetis in Western Australia are ancient structures formed by the layering of cyanobacteria in shallow waters. (credit a: modification of work by NASA; scale-bar data from Matt Russell; credit b: modification of work by Ruth Ellison)

Like geology, physics, and chemistry, biology is a science that gathers knowledge about the natural world. Specifically, biology is the study of life. The discoveries of biology are made by a community of researchers who work individually and together using agreed-on methods. In this sense, biology, like all sciences is a social enterprise like politics or the arts. The methods of science include careful observation, record keeping, logical and mathematical reasoning, experimentation, and submitting conclusions to the scrutiny of others. Science also requires considerable imagination and creativity; a well-designed experiment is commonly described as elegant, or beautiful. Like politics, science has considerable practical implications and some science is dedicated to practical applications, such as the prevention of disease (see **Figure 1.15**). Other science proceeds largely motivated by curiosity. Whatever its goal, there is no doubt that science, including biology, has transformed human existence and will continue to do so.

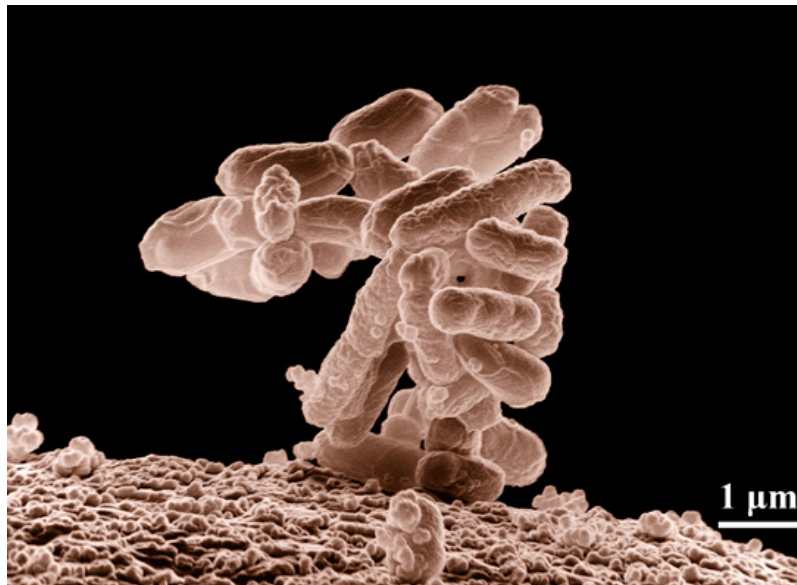


Figure 1.15 Biologists may choose to study *Escherichia coli* (*E. coli*), a bacterium that is a normal resident of our digestive tracts but which is also sometimes responsible for disease outbreaks. In this micrograph, the bacterium is visualized using a scanning electron microscope and digital colorization. (credit: Eric Erbe; digital colorization by Christopher Pooley, USDA-ARS)

The Nature of Science

Biology is a science, but what exactly is science? What does the study of biology share with other scientific disciplines? **Science** (from the Latin *scientia*, meaning "knowledge") can be defined as knowledge about the natural world.

Science is a very specific way of learning, or knowing, about the world. The history of the past 500 years demonstrates that science is a very powerful way of knowing about the world; it is largely responsible for the technological revolutions

that have taken place during this time. There are however, areas of knowledge and human experience that the methods of science cannot be applied to. These include such things as answering purely moral questions, aesthetic questions, or what can be generally categorized as spiritual questions. Science has cannot investigate these areas because they are outside the realm of material phenomena, the phenomena of matter and energy, and cannot be observed and measured.

The **scientific method** is a method of research with defined steps that include experiments and careful observation. The steps of the scientific method will be examined in detail later, but one of the most important aspects of this method is the testing of hypotheses. A **hypothesis** is a suggested explanation for an event, which can be tested. Hypotheses, or tentative explanations, are generally produced within the context of a **scientific theory**. A scientific theory is a generally accepted, thoroughly tested and confirmed explanation for a set of observations or phenomena. Scientific theory is the foundation of scientific knowledge. In addition, in many scientific disciplines (less so in biology) there are **scientific laws**, often expressed in mathematical formulas, which describe how elements of nature will behave under certain specific conditions. There is not an evolution of hypotheses through theories to laws as if they represented some increase in certainty about the world. Hypotheses are the day-to-day material that scientists work with and they are developed within the context of theories. Laws are concise descriptions of parts of the world that are amenable to formulaic or mathematical description.

Natural Sciences

What would you expect to see in a museum of natural sciences? Frogs? Plants? Dinosaur skeletons? Exhibits about how the brain functions? A planetarium? Gems and minerals? Or maybe all of the above? Science includes such diverse fields as astronomy, biology, computer sciences, geology, logic, physics, chemistry, and mathematics (**Figure 1.16**). However, those fields of science related to the physical world and its phenomena and processes are considered **natural sciences**. Thus, a museum of natural sciences might contain any of the items listed above.

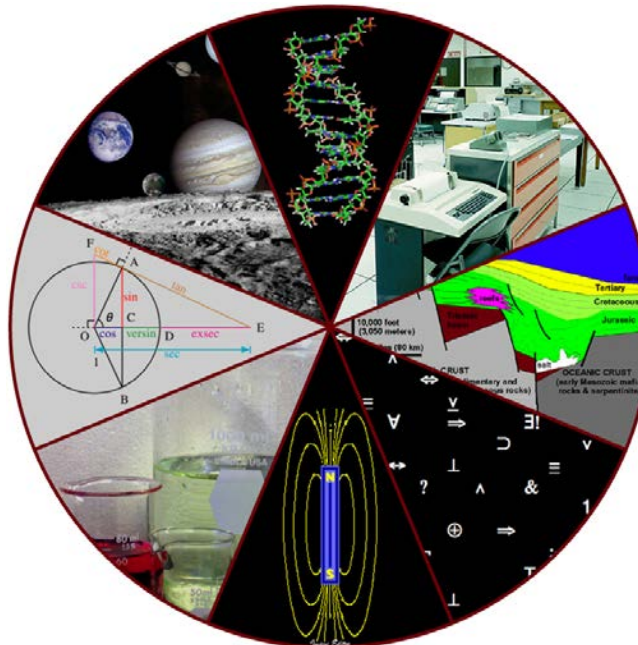


Figure 1.16 Some fields of science include astronomy, biology, computer science, geology, logic, physics, chemistry, and mathematics. (credit: "Image Editor"/Flickr)

There is no complete agreement when it comes to defining what the natural sciences include. For some experts, the natural sciences are astronomy, biology, chemistry, earth science, and physics. Other scholars choose to divide natural sciences into **life sciences**, which study living things and include biology, and **physical sciences**, which study nonliving matter and include astronomy, physics, and chemistry. Some disciplines such as biophysics and biochemistry build on two sciences and are interdisciplinary.

Scientific Inquiry

One thing is common to all forms of science: an ultimate goal “to know.” Curiosity and inquiry are the driving forces for the development of science. Scientists seek to understand the world and the way it operates. Two methods of logical thinking are used: inductive reasoning and deductive reasoning.

Inductive reasoning is a form of logical thinking that uses related observations to arrive at a general conclusion. This type of reasoning is common in descriptive science. A life scientist such as a biologist makes observations and records them.

These data can be qualitative (descriptive) or quantitative (consisting of numbers), and the raw data can be supplemented with drawings, pictures, photos, or videos. From many observations, the scientist can infer conclusions (inductions) based on evidence. Inductive reasoning involves formulating generalizations inferred from careful observation and the analysis of a large amount of data. Brain studies often work this way. Many brains are observed while people are doing a task. The part of the brain that lights up, indicating activity, is then demonstrated to be the part controlling the response to that task.

Deductive reasoning or deduction is the type of logic used in hypothesis-based science. In deductive reasoning, the pattern of thinking moves in the opposite direction as compared to inductive reasoning. **Deductive reasoning** is a form of logical thinking that uses a general principle or law to forecast specific results. From those general principles, a scientist can extrapolate and predict the specific results that would be valid as long as the general principles are valid. For example, a prediction would be that if the climate is becoming warmer in a region, the distribution of plants and animals should change. Comparisons have been made between distributions in the past and the present, and the many changes that have been found are consistent with a warming climate. Finding the change in distribution is evidence that the climate change conclusion is a valid one.

Both types of logical thinking are related to the two main pathways of scientific study: descriptive science and hypothesis-based science. **Descriptive** (or discovery) **science** aims to observe, explore, and discover, while **hypothesis-based science** begins with a specific question or problem and a potential answer or solution that can be tested. The boundary between these two forms of study is often blurred, because most scientific endeavors combine both approaches. Observations lead to questions, questions lead to forming a hypothesis as a possible answer to those questions, and then the hypothesis is tested. Thus, descriptive science and hypothesis-based science are in continuous dialogue.

Hypothesis Testing

Biologists study the living world by posing questions about it and seeking science-based responses. This approach is common to other sciences as well and is often referred to as the scientific method. The scientific method was used even in ancient times, but it was first documented by England's Sir Francis Bacon (1561–1626) (**Figure 1.17**), who set up inductive methods for scientific inquiry. The scientific method is not exclusively used by biologists but can be applied to almost anything as a logical problem-solving method.



Figure 1.17 Sir Francis Bacon is credited with being the first to document the scientific method.

The scientific process typically starts with an observation (often a problem to be solved) that leads to a question. Let's think about a simple problem that starts with an observation and apply the scientific method to solve the problem. One Monday morning, a student arrives at class and quickly discovers that the classroom is too warm. That is an observation that also describes a problem: the classroom is too warm. The student then asks a question: "Why is the classroom so warm?"

Recall that a hypothesis is a suggested explanation that can be tested. To solve a problem, several hypotheses may be proposed. For example, one hypothesis might be, "The classroom is warm because no one turned on the air conditioning."

But there could be other responses to the question, and therefore other hypotheses may be proposed. A second hypothesis might be, “The classroom is warm because there is a power failure, and so the air conditioning doesn’t work.”

Once a hypothesis has been selected, a prediction may be made. A prediction is similar to a hypothesis but it typically has the format “If . . . then . . .” For example, the prediction for the first hypothesis might be, “*If* the student turns on the air conditioning, *then* the classroom will no longer be too warm.”

A hypothesis must be testable to ensure that it is valid. For example, a hypothesis that depends on what a bear thinks is not testable, because it can never be known what a bear thinks. It should also be **falsifiable**, meaning that it can be disproven by experimental results. An example of an unfalsifiable hypothesis is “Botticelli’s *Birth of Venus* is beautiful.” There is no experiment that might show this statement to be false. To test a hypothesis, a researcher will conduct one or more experiments designed to eliminate one or more of the hypotheses. This is important. A hypothesis can be disproven, or eliminated, but it can never be proven. Science does not deal in proofs like mathematics. If an experiment fails to disprove a hypothesis, then we find support for that explanation, but this is not to say that down the road a better explanation will not be found, or a more carefully designed experiment will be found to falsify the hypothesis.

Each experiment will have one or more variables and one or more controls. A **variable** is any part of the experiment that can vary or change during the experiment. A **control** is a part of the experiment that does not change. Look for the variables and controls in the example that follows. As a simple example, an experiment might be conducted to test the hypothesis that phosphate limits the growth of algae in freshwater ponds. A series of artificial ponds are filled with water and half of them are treated by adding phosphate each week, while the other half are treated by adding a salt that is known not to be used by algae. The variable here is the phosphate (or lack of phosphate), the experimental or treatment cases are the ponds with added phosphate and the control ponds are those with something inert added, such as the salt. Just adding something is also a control against the possibility that adding extra matter to the pond has an effect. If the treated ponds show lesser growth of algae, then we have found support for our hypothesis. If they do not, then we reject our hypothesis. Be aware that rejecting one hypothesis does not determine whether or not the other hypotheses can be accepted; it simply eliminates one hypothesis that is not valid (**Figure 1.18**). Using the scientific method, the hypotheses that are inconsistent with experimental data are rejected.

art CONNECTION

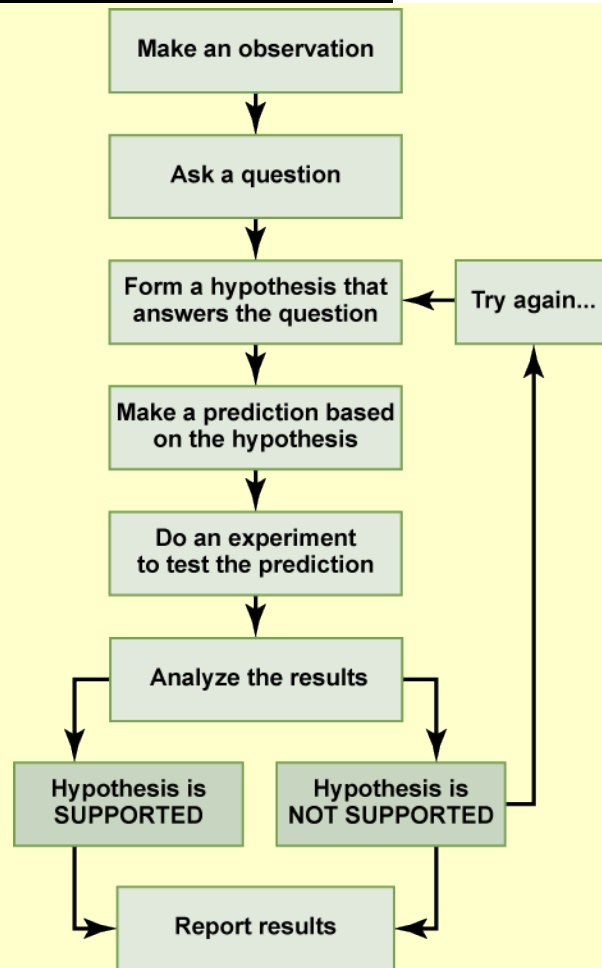


Figure 1.18 The scientific method is a series of defined steps that include experiments and careful observation. If a hypothesis is not supported by data, a new hypothesis can be proposed.

In the example below, the scientific method is used to solve an everyday problem. Which part in the example below is the hypothesis? Which is the prediction? Based on the results of the experiment, is the hypothesis supported? If it is not supported, propose some alternative hypotheses.

1. My toaster doesn't toast my bread.
2. Why doesn't my toaster work?
3. There is something wrong with the electrical outlet.
4. If something is wrong with the outlet, my coffeemaker also won't work when plugged into it.
5. I plug my coffeemaker into the outlet.
6. My coffeemaker works.

In practice, the scientific method is not as rigid and structured as it might at first appear. Sometimes an experiment leads to conclusions that favor a change in approach; often, an experiment brings entirely new scientific questions to the puzzle. Many times, science does not operate in a linear fashion; instead, scientists continually draw inferences and make generalizations, finding patterns as their research proceeds. Scientific reasoning is more complex than the scientific method alone suggests.

Basic and Applied Science

The scientific community has been debating for the last few decades about the value of different types of science. Is it valuable to pursue science for the sake of simply gaining knowledge, or does scientific knowledge only have worth if we can apply it to solving a specific problem or bettering our lives? This question focuses on the differences between two types of science: basic science and applied science.

Basic science or “pure” science seeks to expand knowledge regardless of the short-term application of that knowledge. It is not focused on developing a product or a service of immediate public or commercial value. The immediate goal of basic science is knowledge for knowledge’s sake, though this does not mean that in the end it may not result in an application.

In contrast, **applied science** or “technology,” aims to use science to solve real-world problems, making it possible, for example, to improve a crop yield, find a cure for a particular disease, or save animals threatened by a natural disaster. In applied science, the problem is usually defined for the researcher.

Some individuals may perceive applied science as “useful” and basic science as “useless.” A question these people might pose to a scientist advocating knowledge acquisition would be, “What for?” A careful look at the history of science, however, reveals that basic knowledge has resulted in many remarkable applications of great value. Many scientists think that a basic understanding of science is necessary before an application is developed; therefore, applied science relies on the results generated through basic science. Other scientists think that it is time to move on from basic science and instead to find solutions to actual problems. Both approaches are valid. It is true that there are problems that demand immediate attention; however, few solutions would be found without the help of the knowledge generated through basic science.

One example of how basic and applied science can work together to solve practical problems occurred after the discovery of DNA structure led to an understanding of the molecular mechanisms governing DNA replication. Strands of DNA, unique in every human, are found in our cells, where they provide the instructions necessary for life. During DNA replication, new copies of DNA are made, shortly before a cell divides to form new cells. Understanding the mechanisms of DNA replication enabled scientists to develop laboratory techniques that are now used to identify genetic diseases, pinpoint individuals who were at a crime scene, and determine paternity. Without basic science, it is unlikely that applied science would exist.

Another example of the link between basic and applied research is the Human Genome Project, a study in which each human chromosome was analyzed and mapped to determine the precise sequence of DNA subunits and the exact location of each gene. (The gene is the basic unit of heredity; an individual’s complete collection of genes is his or her genome.) Other organisms have also been studied as part of this project to gain a better understanding of human chromosomes. The Human Genome Project (**Figure 1.19**) relied on basic research carried out with non-human organisms and, later, with the human genome. An important end goal eventually became using the data for applied research seeking cures for genetically related diseases.

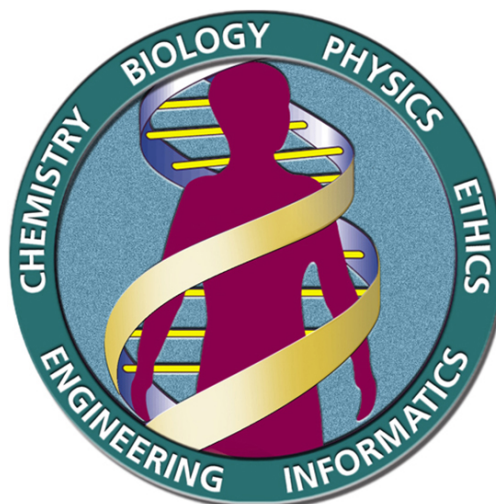


Figure 1.19 The Human Genome Project was a 13-year collaborative effort among researchers working in several different fields of science. The project was completed in 2003. (credit: the U.S. Department of Energy Genome Programs)

While research efforts in both basic science and applied science are usually carefully planned, it is important to note that some discoveries are made by serendipity, that is, by means of a fortunate accident or a lucky surprise. Penicillin was discovered when biologist Alexander Fleming accidentally left a petri dish of *Staphylococcus* bacteria open. An unwanted mold grew, killing the bacteria. The mold turned out to be *Penicillium*, and a new antibiotic was discovered. Even in

the highly organized world of science, luck—when combined with an observant, curious mind—can lead to unexpected breakthroughs.

Reporting Scientific Work

Whether scientific research is basic science or applied science, scientists must share their findings for other researchers to expand and build upon their discoveries. Communication and collaboration within and between sub disciplines of science are key to the advancement of knowledge in science. For this reason, an important aspect of a scientist's work is disseminating results and communicating with peers. Scientists can share results by presenting them at a scientific meeting or conference, but this approach can reach only the limited few who are present. Instead, most scientists present their results in peer-reviewed articles that are published in scientific journals. **Peer-reviewed articles** are scientific papers that are reviewed, usually anonymously by a scientist's colleagues, or peers. These colleagues are qualified individuals, often experts in the same research area, who judge whether or not the scientist's work is suitable for publication. The process of peer review helps to ensure that the research described in a scientific paper or grant proposal is original, significant, logical, and thorough. Grant proposals, which are requests for research funding, are also subject to peer review. Scientists publish their work so other scientists can reproduce their experiments under similar or different conditions to expand on the findings. The experimental results must be consistent with the findings of other scientists.

There are many journals and the popular press that do not use a peer-review system. A large number of online open-access journals, journals with articles available without cost, are now available many of which use rigorous peer-review systems, but some of which do not. Results of any studies published in these forums without peer review are not reliable and should not form the basis for other scientific work. In one exception, journals may allow a researcher to cite a personal communication from another researcher about unpublished results with the cited author's permission.

KEY TERMS

applied science a form of science that solves real-world problems

atom a basic unit of matter that cannot be broken down by normal chemical reactions

basic science science that seeks to expand knowledge regardless of the short-term application of that knowledge

biology the study of living organisms and their interactions with one another and their environments

biosphere a collection of all ecosystems on Earth

cell the smallest fundamental unit of structure and function in living things

community a set of populations inhabiting a particular area

control a part of an experiment that does not change during the experiment

deductive reasoning a form of logical thinking that uses a general statement to forecast specific results

descriptive science a form of science that aims to observe, explore, and find things out

ecosystem all living things in a particular area together with the abiotic, nonliving parts of that environment

eukaryote an organism with cells that have nuclei and membrane-bound organelles

evolution the process of gradual change in a population that can also lead to new species arising from older species

falsifiable able to be disproven by experimental results

homeostasis the ability of an organism to maintain constant internal conditions

hypothesis a suggested explanation for an event, which can be tested

hypothesis-based science a form of science that begins with a specific explanation that is then tested

inductive reasoning a form of logical thinking that uses related observations to arrive at a general conclusion

life science a field of science, such as biology, that studies living things

macromolecule a large molecule typically formed by the joining of smaller molecules

molecule a chemical structure consisting of at least two atoms held together by a chemical bond

natural science a field of science that studies the physical world, its phenomena, and processes

organ a structure formed of tissues operating together to perform a common function

organ system the higher level of organization that consists of functionally related organs

organelle a membrane-bound compartment or sac within a cell

organism an individual living entity

peer-reviewed article a scientific report that is reviewed by a scientist's colleagues before publication

phylogenetic tree a diagram showing the evolutionary relationships among biological species based on similarities and differences in genetic or physical traits or both

physical science a field of science, such as astronomy, physics, and chemistry, that studies nonliving matter

population all individuals within a species living within a specific area

prokaryote a unicellular organism that lacks a nucleus or any other membrane-bound organelle

science knowledge that covers general truths or the operation of general laws, especially when acquired and tested by the scientific method

scientific law a description, often in the form of a mathematical formula, for the behavior of some aspect of nature under certain specific conditions

scientific method a method of research with defined steps that include experiments and careful observation

scientific theory a thoroughly tested and confirmed explanation for observations or phenomena

tissue a group of similar cells carrying out the same function

variable a part of an experiment that can vary or change

CHAPTER SUMMARY

1.1 Themes and Concepts of Biology

Biology is the science of life. All living organisms share several key properties such as order, sensitivity or response to stimuli, reproduction, adaptation, growth and development, regulation, homeostasis, and energy processing. Living things are highly organized following a hierarchy that includes atoms, molecules, organelles, cells, tissues, organs, and organ systems. Organisms, in turn, are grouped as populations, communities, ecosystems, and the biosphere. Evolution is the source of the tremendous biological diversity on Earth today. A diagram called a phylogenetic tree can be used to show evolutionary relationships among organisms. Biology is very broad and includes many branches and sub disciplines. Examples include molecular biology, microbiology, neurobiology, zoology, and botany, among others.

1.2 The Process of Science

Biology is the science that studies living organisms and their interactions with one another and their environments. Science attempts to describe and understand the nature of the universe in whole or in part. Science has many fields; those fields related to the physical world and its phenomena are considered natural sciences.

A hypothesis is a tentative explanation for an observation. A scientific theory is a well-tested and consistently verified explanation for a set of observations or phenomena. A scientific law is a description, often in the form of a mathematical formula, of the behavior of an aspect of nature under certain circumstances. Two types of logical reasoning are used in science. Inductive reasoning uses results to produce general scientific principles. Deductive reasoning is a form of logical thinking that predicts results by applying general principles. The common thread throughout scientific research is the use of the scientific method. Scientists present their results in peer-reviewed scientific papers published in scientific journals.

Science can be basic or applied. The main goal of basic science is to expand knowledge without any expectation of short-term practical application of that knowledge. The primary goal of applied research, however, is to solve practical problems.

ART CONNECTION QUESTIONS

1. **Figure 1.8** Which of the following statements is false?

- Tissues exist within organs which exist within organ systems.
- Communities exist within populations which exist within ecosystems.
- Organelles exist within cells which exist within tissues.
- Communities exist within ecosystems which exist in the biosphere.

2. **Figure 1.18** In the example below, the scientific method is used to solve an everyday problem. Which part in the example below is the hypothesis? Which is the prediction?

Based on the results of the experiment, is the hypothesis supported? If it is not supported, propose some alternative hypotheses.

- My toaster doesn't toast my bread.
- Why doesn't my toaster work?
- There is something wrong with the electrical outlet.
- If something is wrong with the outlet, my coffeemaker also won't work when plugged into it.
- I plug my coffeemaker into the outlet.
- My coffeemaker works.

REVIEW QUESTIONS

3. The smallest unit of biological structure that meets the functional requirements of “living” is the _____.
- organ
 - organelle
 - cell
 - macromolecule
4. Which of the following sequences represents the hierarchy of biological organization from the most complex to the least complex level?
- organelle, tissue, biosphere, ecosystem, population
 - organ, organism, tissue, organelle, molecule
 - organism, community, biosphere, molecule, tissue, organ
 - biosphere, ecosystem, community, population, organism
5. A suggested and testable explanation for an event is called a _____.
- hypothesis
 - variable
 - theory
 - control
6. The type of logical thinking that uses related observations to arrive at a general conclusion is called _____.
- deductive reasoning
 - the scientific method
 - hypothesis-based science
 - inductive reasoning

CRITICAL THINKING QUESTIONS

7. Using examples, explain how biology can be studied from a microscopic approach to a global approach.
8. Give an example of how applied science has had a direct effect on your daily life.

APPENDIX C | MEASUREMENTS AND THE METRIC SYSTEM

C1 | Measurements and the Metric System

Measurements and the Metric System

Measurement	Unit	Abbreviation	Metric Equivalent	Approximate Standard Equivalent
Length	nanometer	nm	1 nm = 10^{-9} m	1 mm = 0.039 inch 1 cm = 0.394 inch 1 m = 39.37 inches 1 m = 3.28 feet 1 m = 1.093 yards 1 km = 0.621 miles
	micrometer	μm	1 μm = 10^{-6} m	
	millimeter	mm	1 mm = 0.001 m	
	centimeter	cm	1 cm = 0.01 m	
	meter	m	1 m = 100 cm 1 m = 1000 mm	
	kilometer	km	1 km = 1000 m	
Mass	microgram	μg	1 μg = 10^{-6} g	1 g = 0.035 ounce 1 kg = 2.205 pounds
	milligram	mg	1 mg = 10^{-3} g	
	gram	g	1 g = 1000 mg	
	kilogram	kg	1 kg = 1000 g	
Volume	microliter	μl	1 μl = 10^{-6} l	1 ml = 0.034 fluid ounce 1 l = 1.057 quarts 1 kl = 264.172 gallons
	milliliter	ml	1 ml = 10^{-3} l	
	liter	l	1 l = 1000 ml	
	kiloliter	kl	1 kl = 1000 l	
Area	square centimeter	cm^2	1 cm^2 = 100 mm^2	1 cm^2 = 0.155 square inch 1 m^2 = 10.764 square feet 1 m^2 = 1.196 square yards 1 ha = 2.471 acres
	square meter	m^2	1 m^2 = 10,000 cm^2	
	hectare	ha	1 ha = 10,000 m^2	
Temperature	Celsius	$^{\circ}\text{C}$	—	1 $^{\circ}\text{C}$ = $5/9 \times (^{\circ}\text{F} - 32)$

Table C1

ANSWER KEY

Chapter 1

1 Figure 1.8 B 3 C 5 A 7 Researchers can approach biology from the smallest to the largest, and everything in between. For instance, an ecologist may study a population of individuals, the population's community, the community's ecosystem, and the ecosystem's part in the biosphere. When studying an individual organism, a biologist could examine the cell and its organelles, the tissues that the cells make up, the organs and their respective organ systems, and the sum total—the organism itself.

Chapter 2

1 Figure 2.3 Potassium-39 has twenty neutrons. Potassium-40 has twenty one neutrons. 2 A 4 A 6 C 8 D 10 A 12 Hydrogen bonds and van der Waals interactions form weak associations between different molecules. They provide the structure and shape necessary for proteins and DNA within cells so that they function properly. Hydrogen bonds also give water its unique properties, which are necessary for life. 14 Water molecules are polar, meaning they have separated partial positive and negative charges. Because of these charges, water molecules are able to surround charged particles created when a substance dissociates. The surrounding layer of water molecules stabilizes the ion and keeps differently charged ions from reassociating, so the substance stays dissolved. 16 A change in gene sequence can lead to a different amino acid being added to a polypeptide chain instead of the normal one. This causes a change in protein structure and function. For example, in sickle cell anemia, the hemoglobin β chain has a single amino acid substitution. Because of this change, the disc-shaped red blood cells assume a crescent shape, which can result in serious health problems.

Chapter 3

1 Figure 3.7 Plant cells have plasmodesmata, a cell wall, a large central vacuole, chloroplasts, and plastids. Animal cells have lysosomes and centrosomes. 3 **Figure 3.22** No, it must have been hypotonic, as a hypotonic solution would cause water to enter the cells, thereby making them burst. 4 C 6 D 8 D 10 A 12 C 15 The advantages of light microscopes are that they are easily obtained, and the light beam does not kill the cells. However, typical light microscopes are somewhat limited in the amount of detail that they can reveal. Electron microscopes are ideal because you can view intricate details, but they are bulky and costly, and preparation for the microscopic examination kills the specimen. Transmission electron microscopes are designed to examine the internal structures of a cell, whereas a scanning electron microscope only allows visualization of the surface of a structure. 17 "Form follows function" refers to the idea that the function of a body part dictates the form of that body part. As an example, organisms like birds or fish that fly or swim quickly through the air or water have streamlined bodies that reduce drag. At the level of the cell, in tissues involved in secretory functions, such as the salivary glands, the cells have abundant Golgi. 19 Water moves through a semipermeable membrane in osmosis because there is a concentration gradient across the membrane of solute and solvent. The solute cannot effectively move to balance the concentration on both sides of the membrane, so water moves to achieve this balance.

Chapter 4

1 Figure 4.6 A compost pile decomposing is an exergonic process. A baby developing from a fertilized egg is an endergonic process. Tea dissolving into water is an exergonic process. A ball rolling downhill is an exergonic process. 3 **Figure 4.16** The illness is caused by lactic acid build-up. Lactic acid levels rise after exercise, making the symptoms worse. Milk sickness is rare today, but was common in the Midwestern United States in the early 1800s. 4 D 6 C 8 D 10 C 12 B 14 Physical exercise involves both anabolic and catabolic processes. Body cells break down sugars to provide ATP to do the work necessary for exercise, such as muscle contractions. This is catabolism. Muscle cells also must repair muscle tissue damaged by exercise by building new muscle. This is anabolism. 16 Most vitamins and minerals act as cofactors and coenzymes for enzyme action. Many enzymes require the binding of certain cofactors or coenzymes to be able to catalyze their reactions. Since enzymes catalyze many important reactions, it is critical to obtain sufficient vitamins and minerals from diet and supplements. Vitamin C (ascorbic acid) is a coenzyme necessary for the action of enzymes that build collagen. 18 The oxygen we inhale is the final electron acceptor in the electron transport chain and allows aerobic respiration to proceed, which is the most efficient pathway for harvesting energy in the form of ATP from food molecules. The carbon dioxide we breathe out is formed during the citric acid cycle when the bonds in carbon compounds are broken. 20 They are very economical. The substrates, intermediates, and products move between pathways and do so in response to finely tuned feedback inhibition loops that keep metabolism overall on an even keel. Intermediates in one pathway may occur in another, and they can move from one pathway to another fluidly in response to the needs of the cell.

Chapter 5

1 Figure 5.7 Levels of carbon dioxide (a reactant) will fall, and levels of oxygen (a product) will rise. As a result, the rate of photosynthesis will slow down. 2 C 4 C 6 C 8 B 10 A 12 To convert solar energy into chemical energy that cells can use to do work. 14 The energy is present initially as light. A photon of light hits chlorophyll, causing an electron to be energized.

The free electron travels through the electron transport chain, and the energy of the electron is used to pump hydrogen ions into the thylakoid space, transferring the energy into the electrochemical gradient. The energy of the electrochemical gradient is used to power ATP synthase, and the energy is transferred into a bond in the ATP molecule. In addition, energy from another photon can be used to create a high-energy bond in the molecule NADPH. **16** Photosynthesis takes the energy of sunlight and combines water and carbon dioxide to produce sugar and oxygen as a waste product. The reactions of respiration take sugar and consume oxygen to break it down into carbon dioxide and water, releasing energy. Thus, the reactants of photosynthesis are the products of respiration, and vice versa.

Chapter 6

1 Figure 6.4 D. The kinetochore becomes attached to the mitotic spindle. Sister chromatids line up at the metaphase plate. The kinetochore breaks apart and the sister chromatids separate. The nucleus reforms and the cell divides. **2 C 4 B 6 A 8 C 10 C 12** Human somatic cells have 46 chromosomes, including 22 homologous pairs and one pair of nonhomologous sex chromosomes. This is the $2n$, or diploid, condition. Human gametes have 23 chromosomes, one each of 23 unique chromosomes. This is the n , or haploid, condition. **14** If one of the genes that produce regulator proteins becomes mutated, it produces a malformed, possibly non-functional, cell-cycle regulator. This increases the chance that more mutations will be left unrepaired in the cell. Each subsequent generation of cells sustains more damage. The cell cycle can speed up as a result of loss of functional checkpoint proteins. The cells can lose the ability to self-destruct. **16** The common components of eukaryotic cell division and binary fission are DNA duplication, segregation of duplicated chromosomes, and the division of the cytoplasmic contents.

Chapter 7

1 Figure 7.2 Yes, it will be able to reproduce asexually. **2 C 4 B 6 D 8 B 10 D 12** The offspring of sexually reproducing organisms are all genetically unique. Because of this, sexually reproducing organisms may have more successful survival of offspring in environments that change than asexually reproducing organisms, whose offspring are all genetically identical. In addition, the rate of adaptation of sexually reproducing organisms is higher, because of their increased variation. This may allow sexually reproducing organisms to adapt more quickly to competitors and parasites, who are evolving new ways to exploit or outcompete them. **14** Random alignment leads to new combinations of traits. The chromosomes that were originally inherited by the gamete-producing individual came equally from the egg and the sperm. In metaphase I, the duplicated copies of these maternal and paternal homologous chromosomes line up across the center of the cell to form a tetrad. The orientation of each tetrad is random. There is an equal chance that the maternally derived chromosomes will be facing either pole. The same is true of the paternally derived chromosomes. The alignment should occur differently in almost every meiosis. As the homologous chromosomes are pulled apart in anaphase I, any combination of maternal and paternal chromosomes will move toward each pole. The gametes formed from these two groups of chromosomes will have a mixture of traits from the individual's parents. Each gamete is unique. **16** The problems caused by trisomies arise because the genes on the chromosome that is present in three copies produce more product than genes on chromosomes with only two copies. The cell does not have a way to adjust the amount of product, and the lack of balance causes problems in development and the maintenance of the individual. Each chromosome is different, and the differences in survivability could have to do with the numbers of genes on the two chromosomes. Chromosome 21 may be a smaller chromosome, so there are fewer unbalanced gene products. It is also possible that chromosome 21 carries genes whose products are less sensitive to differences in dosage than chromosome 18. The genes may be less involved in critical pathways, or the differences in dosage may make less of a difference to those pathways.

Chapter 8

1 Figure 8.9 You cannot be sure if the plant is homozygous or heterozygous as the data set is too small: by random chance, all three plants might have acquired only the dominant gene even if the recessive one is present. **3 Figure 8.16** Half of the female offspring would be heterozygous ($X^W X^w$) with red eyes, and half would be homozygous recessive ($X^w X^w$) with white eyes. Half of the male offspring would be hemizygous dominant ($X^W Y$) with red eyes, and half would be hemizygous recessive ($X^w Y$) with white eyes. **4 B 6 A 8 C 10 D 12 C 14** The garden pea has flowers that close tightly during self-pollination. This helps to prevent accidental or unintentional fertilizations that could have diminished the accuracy of Mendel's data. **16** The Punnett square will be 2×2 and will have T and t along the top and T and t along the left side. Clockwise from the top left, the genotypes listed within the boxes will be TT , Tt , Tt , and tt . The genotypic ratio will be $1TT:2Tt:1tt$. **18** Yes this child could have come from these parents. The child would have inherited an i allele from each parent and for this to happen the type A parent had to have genotype $I^A i$ and the type b parent had to have genotype $I^B i$.

Chapter 9

1 Figure 9.10 Ligase, as this enzyme joins together Okazaki fragments. **2 A 4 B 6 A 8 C 10 D 12** The DNA is wound around proteins called histones. The histones then stack together in a compact form that creates a fiber that is 30-nm thick. The fiber is further coiled for greater compactness. During metaphase of mitosis, the chromosome is at its most compact to facilitate chromosome movement. During interphase, there are denser areas of chromatin, called heterochromatin, that contain DNA that is not expressed, and less dense euchromatin that contains DNA that is expressed. **14** Telomerase has an inbuilt RNA template

INDEX

A

absorption spectrum, **124, 132**
 abyssal zone, **556, 563**
 acellular, **450, 472**
 acetyl CoA, **104, 113**
 acid, **51**
 Acid rain, **547**
 acid rain, **563**
 Acids, **38**
 acoelomate, **395**
 acoelomates, **360**
 Actinopterygii, **387, 395**
 action potential, **432, 440**
 activation energy, **97, 113**
 active immunity, **461, 472**
 active site, **98, 113**
 Active transport, **81**
 active transport, **85**
 adaptation, **253, 270**
 Adaptive immunity, **460**
 adaptive immunity, **472**
 adaptive radiation, **264, 270**
 adhesion, **37, 51**
 adrenal gland, **440**
 adrenal glands, **423**
 Age structure, **512**
 age structure, **525**
 algal bloom, **560, 563**
 allele, **194**
 alleles, **178**
 allergy, **469, 472**
 Allopatric speciation, **262**
 allopatric speciation, **270**
 allosteric inhibition, **100, 113**
 alternation of generations, **155, 170**
 alternative RNA splicing, **219, 220**
 alveoli, **415**
 alveolus, **440**
 amino acid, **51**
 Amino acids, **46**
 amniote, **395**
 amniotes, **389**
 amoebocyte, **395**
 Amoebocytes, **362**
 Amoebozoa, **306, 319**
 Amphibia, **388, 395**
 ampulla of Lorenzini, **395**
 ampullae of Lorenzini, **387**
 amygdala, **437, 440**
 amylase, **409, 440**
 anabolic, **93, 113**
 anaerobic, **292, 319**
 anaerobic cellular respiration, **113**
 analogous structure, **270, 283, 288**
 analogous structures, **253**
 anaphase, **140, 149**
 aneuploid, **165, 170**
 anion, **51**
 anions, **31**
 anneal, **245**
 annealing, **229**
 Annelida, **378, 395**
 anoxic, **292, 319**
 anther, **344, 351**
 Anthophyta, **347, 351**
 Anthropoids, **393**
 anthropoids, **395**
 antibody, **461, 472**
 antigen, **460, 472**
 antigen-presenting cell (APC), **462, 472**
 Anura, **388, 395**
 anus, **411, 440**
 aorta, **417, 440**
 apex consumer, **563**
 apex consumers, **531**
 aphotic zone, **555, 563**
 apical meristem, **329, 351**
 Apoda, **388, 395**
 apoptosis, **453, 472**
 appendicular skeleton, **428, 440**
 applied science, **22, 24**
 Archaeplastida, **306, 319**
 Arctic tundra, **553**
 arctic tundra, **563**
 Arteries, **419**
 artery, **440**
 Arthropoda, **371, 395**
 Ascomycota, **314, 319**
 Asexual reproduction, **478**
 asexual reproduction, **495**
 Asymmetrical, **358**
 asymmetrical, **395**
 atom, **9, 24**
 atomic number, **28, 51**
 ATP, **102, 113**
 ATP synthase, **107, 113**
 atrium, **417, 440**
 attenuation, **455, 472**
 auditory ossicles, **427, 440**
 autoantibody, **470, 472**
 Autoimmunity, **470**
 autoimmunity, **472**
 autonomic nervous system, **437, 440**

autosome, **170**
 autosomes, **165**
 autotroph, **118, 132, 563**
 autotrophs, **535**
 axial skeleton, **426, 440**
 axon, **433, 440**

B

B cell, **472**
 B cells, **460**
 Basal angiosperms, **348**
 basal angiosperms, **351**
 basal ganglia, **436, 440**
 base, **51**
 bases, **38**
 Basic science, **22**
 basic science, **24**
 Basidiomycota, **314**
 basidiomycota, **319**
 benthic realm, **555, 563**
 bicuspid valve, **417, 440**
 Bilateral symmetry, **359**
 bilateral symmetry, **395**
 Bile, **410**
 bile, **440**
 binary fission, **145, 149**
 binomial nomenclature, **276, 288**
 biodiversity, **568, 590**
 biodiversity hotspot, **586, 590**
 bioenergetics, **92, 113**
 biofilm, **294, 319**
 biogeochemical cycle, **537, 563**
 Biology, **5**
 biology, **24**
 Biomagnification, **536**
 biomagnification, **563**
 biomarker, **243, 245**
 biome, **531, 563**
 bioremediation, **301, 319**
 biosphere, **12, 24**
 Biotechnology, **225**
 biotechnology, **245**
 birth rate, **505, 525**
 Black Death, **297, 319**
 blastocyst, **483, 495**
 body plan, **356, 395**
 bolus, **409, 440**
 bones, **391**
 boreal forest, **552, 563**
 bottleneck effect, **256, 270**
 botulism, **299, 319**
 brachiation, **393, 395**
 brainstem, **437, 440**
 branch point, **279, 288**

bronchi, **415, 440**
 bronchiole, **440**
 bronchioles, **415**
 budding, **363, 395, 495**
 Budding, **479**
 buffer, **51**
 Buffers, **38**
 bulbourethral gland, **486, 495**
 Bush meat, **578**
 bush meat, **590**

C

caecilian, **395**
 Caecilians, **389**
 Calvin cycle, **127, 132**
 calyx, **344, 351**
 canopy, **548, 563**
 capillaries, **419**
 capillary, **440**
 capsid, **451, 472**
 capsule, **295, 319**
 carbohydrate, **51**
 Carbohydrates, **40**
 carbon fixation, **127, 132**
 cardiac cycle, **418, 440**
 Cardiac muscle tissue, **430**
 cardiac muscle tissue, **440**
 carpel, **344, 351**
 carrying capacity, **505, 525**
 cartilaginous joint, **440**
 Cartilaginous joints, **428**
 catabolic, **93, 113**
 cation, **51**
 cations, **31**
 cell, **10, 24**
 cell cycle, **137, 149**
 cell cycle checkpoints, **142, 149**
 cell plate, **140, 149**
 cell wall, **69, 85**
 cell-mediated immune response, **460, 472**
 Cellulose, **41**
 cellulose, **51**
 central nervous system (CNS), **435, 440**
 central vacuole, **70, 85**
 centriole, **149**
 centrioles, **138**
 Cephalochordata, **383, 395**
 cephalothorax, **373, 395**
 cerebellum, **437, 441**
 cerebral cortex, **435, 441**
 cerebrospinal fluid (CSF), **435, 441**
 chaeta, **395**

chaetae, **379**
 channel, **561, 563**
 chaparral, **550, 563**
 chelicerae, **373, 395**
 chemical bond, **51**
 chemical bonds, **31**
 chemical diversity, **569, 590**
 chemiosmosis, **107, 113**
 chemoautotroph, **563**
 chemoautotrophs, **535**
 chiasmata, **158, 170**
 chitin, **41, 51, 370, 395**
 chlorophyll, **120, 132**
 chlorophyll a, **124, 132**
 chlorophyll b, **124, 132**
 chloroplast, **85, 120, 132**
 Chloroplasts, **69**
 choanocyte, **362, 395**
 Chondrichthyes, **386, 395**
 Chordata, **382, 395**
 Chromalveolata, **306, 319**
 chromosome inversion, **168, 170**
 chyme, **410, 441**
 chytridiomycosis, **580, 590**
 Chytridiomycota, **314, 319**
 cilia, **64**
 cilium, **85**
 citric acid cycle, **105, 113**
 clade, **288**
 clades, **285**
 cladistics, **285, 288**
 class, **276, 288**
 cleavage furrow, **140, 149**
 climax community, **524, 525**
 clitellum, **380, 395**
 clitoris, **487, 495**
 cloning, **228, 245**
 closed circulatory system, **417, 441**
 club moss, **351**
 club mosses, **335**
 Cnidaria, **363, 395**
 cnidocyte, **395**
 cnidocytes, **363**
 codominance, **186, 194**
 codon, **214, 220**
 coelom, **360, 395**
 cohesion, **36, 51**
 colon, **411, 441**
 commensalism, **302, 319**
 community, **12, 24**
 competitive exclusion principle, **518, 525**
 competitive inhibition, **99, 113**
 complement system, **459, 472**

complete digestive system, **370, 396**
 concentration gradient, **77, 85**
 cone, **351**
 cones, **339**
 conifer, **351**
 Conifers, **341**
 conjugation, **296, 319**
 Continuous variation, **174**
 continuous variation, **194**
 control, **20, 24**
 convergent evolution, **253, 270**
 coral reef, **563**
 Coral reefs, **557**
 corolla, **344, 351**
 corpus callosum, **435, 441**
 corpus luteum, **487, 495**
 cotyledon, **351**
 cotyledons, **347**
 covalent bond, **32, 51**
 craniate, **396**
 craniates, **385**
 Crocodylia, **390, 396**
 crossing over, **158, 170**
 cryptofauna, **558, 563**
 ctenidia, **375, 396**
 cutaneous respiration, **388, 396**
 cyanobacteria, **292, 319**
 cycad, **351**
 Cycads, **341**
 cytokine, **457, 472**
 Cytokinesis, **140**
 cytokinesis, **149**
 cytopathic, **453, 472**
 cytoplasm, **63, 85**
 cytoskeleton, **63, 85**
 cytosol, **63, 85**
 cytotoxic T lymphocyte (T_C), **472**

D

dead zone, **544, 563**
 death rate, **505, 525**
 Deductive reasoning, **19**
 deductive reasoning, **24**
 demography, **500, 525**
 denaturation, **46, 51**
 dendrite, **441**
 Dendrites, **432**
 dendritic cell, **462, 472**
 density-dependent, **508**
 density-dependent regulation, **525**
 density-independent, **508**

density-independent regulation, **525**
 deoxyribonucleic acid (DNA), **49, 51**
 deoxyribose, **200, 220**
 depolarization, **432, 441**
 Descriptive, **19**
 descriptive science, **24**
 desmosome, **85**
 desmosomes, **72**
 detrital food web, **534, 563**
 Deuteromycota, **319**
 deuterostome, **396**
 Deuterostomes, **360**
 diaphragm, **415, 441**
 diastole, **418, 441**
 dicot, **351**
 dicots, **348**
 Diffusion, **77**
 diffusion, **85**
 dihybrid, **183, 194**
 dioecious, **371, 396**
 diphyodont, **396**
 diphyodonts, **392**
 diploblast, **396**
 diploblasts, **359**
 diploid, **136, 149**
 diploid-dominant, **155, 170**
 Diplontic, **327**
 diplontic, **351**
 disaccharide, **51**
 Disaccharides, **41**
 discontinuous variation, **174, 194**
 dispersal, **263, 270**
 divergent evolution, **253, 270**
 DNA ligase, **205, 220**
 DNA polymerase, **205, 220**
 domain, **288**
 domains, **276**
 Dominant, **177**
 dominant, **194**
 dorsal hollow nerve cord, **382, 396**
 double helix, **201, 220**
 down feather, **396**
 down feathers, **391**
 down-regulation, **422, 441**

E

Echinodermata, **380, 396**
 ecosystem, **12, 24, 530, 563**
 ecosystem diversity, **569, 590**
 ecosystem services, **560, 563**
 ectotherm, **441**

ectotherms, **404**
 effector cell, **472**
 effector cells, **464**
 electrocardiogram (ECG), **419, 441**
 electrochemical gradient, **81, 85**
 electromagnetic spectrum, **123, 132**
 electron, **28, 51**
 electron transfer, **31, 51**
 electron transport chain, **105, 113**
 element, **51**
 elements, **28**
 Emergent vegetation, **562**
 emergent vegetation, **563**
 Endemic species, **571**
 endemic species, **590**
 endergonic, **113**
 endergonic reactions, **96**
 endocrine gland, **441**
 endocrine glands, **421**
 Endocytosis, **82**
 endocytosis, **85**
 endomembrane system, **64, 85**
 endoplasmic reticulum (ER), **65, 85**
 endosymbiosis, **319**
 endosymbiotic theory, **303**
 endotherm, **404, 441**
 environmental disturbance, **525**
 environmental disturbances, **523**
 enzyme, **51, 113**
 Enzymes, **45**
 enzymes, **97**
 epidemic, **319**
 epidemics, **297**
 epidermis, **364, 396**
 epigenetic, **216, 220**
 epistasis, **192, 194**
 Equilibrium, **531**
 equilibrium, **563**
 esophagus, **408, 441**
 essential nutrient, **441**
 essential nutrients, **413**
 estrogen, **491, 495**
 Estuaries, **559**
 estuary, **563**
 eucoelomate, **396**
 eucoelomates, **360**
 eudicots, **347, 351**
 eukaryote, **24**
 eukaryotes, **10**
 eukaryotic cell, **60, 85**
 euploid, **165, 170**

eutherian mammal, **396**
 Eutherian mammals, **393**
 eutrophication, **542, 564**
 evaporation, **35, 51**
 evolution, **12, 24**
 Excavata, **306, 319**
 exergonic, **113**
 exergonic reactions, **96**
 exocrine gland, **441**
 Exocrine glands, **421**
 Exocytosis, **83**
 exocytosis, **85**
 exon, **220**
 exons, **212**
 Exotic species, **579**
 exotic species, **590**
 exponential growth, **504, 525**
 external fertilization, **481, 495**
 extinction, **570, 590**
 extinction rate, **590**
 extinction rates, **584**
 extracellular digestion, **365, 396**
 extracellular matrix, **70, 85**
 extremophile, **319**
 extremophiles, **294**

F

F₁, **175, 194**
 F₂, **175, 194**
 facilitated transport, **78, 85**
 fallout, **546, 564**
 falsifiable, **20, 24**
 family, **276, 288**
 fat, **43, 51**
 Feedback inhibition, **102**
 feedback inhibition, **113**
 fermentation, **108, 113**
 fern, **351**
 ferns, **336**
 fertilization, **157, 170**
 fibrous joint, **441**
 fibrous joints, **428**
 filament, **344, 351**
 Fission, **478**
 fission, **495**
 Flagella, **64**
 flagellum, **85**
 fluid mosaic model, **74, 85**
 follicle stimulating hormone (FSH), **490, 495**
 food chain, **531, 564**
 food web, **533, 564**
 foodborne disease, **299, 319**
 Foundation species, **521**
 foundation species, **525**

founder effect, **257, 270**
 fragmentation, **363, 396, 495**
 Fragmentation, **479**
 frog, **396**
 Frogs, **389**
 frontal lobe, **436, 441**
 FtsZ, **147, 149**

G

G₀ phase, **141, 149**
 G₁ phase, **137, 149**
 G₂ phase, **138, 149**
 gallbladder, **411, 441**
 gametangia, **327**
 gametangium, **351**
 gamete, **149**
 gametes, **136**
 gametophyte, **170, 327, 351**
 gametophytes, **157**
 gap junction, **85**
 Gap junctions, **72**
 gastrodermis, **364, 396**
 gastrovascular cavity, **365, 396**
 gastrulation, **484, 495**
 Gel electrophoresis, **226**
 gel electrophoresis, **245**
 gemmule, **396**
 gemmules, **363**
 gene, **149**
 gene expression, **216, 220**
 gene flow, **257, 270**
 gene pool, **254, 270**
 Gene therapy, **233**
 gene therapy, **245**
 genes, **136**
 genetic code, **214, 220**
 Genetic diversity, **569**
 genetic diversity, **590**
 genetic drift, **255, 270**
 genetic engineering, **232, 245**
 genetic map, **236, 245**
 genetic testing, **245**
 genetically modified organism, **232**
 genetically modified organism (GMO), **245**
 genome, **136, 149**
 genomics, **236, 245**
 genotype, **178, 194**
 genus, **276, 288**
 germ cell, **170**
 germ cells, **155**
 germ layer, **396**
 germ layers, **359**
 gestation, **493, 495**

gestation period, **493, 495**
 ginkgophyte, **351**
 ginkgophyte, **342**
 glia, **432, 441**
 Glomeromycota, **314, 319**
 Glycogen, **41**
 glycogen, **51**
 Glycolysis, **103**
 glycolysis, **113**
 glycoprotein, **451, 472**
 gnathostome, **396**
 Gnathostomes, **386**
 gnetophyte, **351**
 Gnetophytes, **342**
 Golgi apparatus, **66, 86**
 gonadotropin-releasing hormone (GnRH), **490, 495**
 Gram-negative, **295, 319**
 Gram-positive, **295, 319**
 granum, **121, 132**
 grazing food web, **534, 564**
 gross primary productivity, **535, 564**
 gymnosperm, **351**
 Gymnosperms, **339**
 gynoecium, **344, 351**

H

habitat heterogeneity, **572, 590**
 hagfish, **396**
 Hagfishes, **385**
 haplodiplontic, **327, 351**
 haploid, **136, 149**
 haploid-dominant, **155, 170**
 Haplontic, **327**
 haplontic, **351**
 heat energy, **94, 113**
 helicase, **205, 220**
 helper T lymphocyte (T_H), **472**
 hemizygous, **189, 194**
 hemocoel, **371, 396**
 herbaceous, **349, 351**
 Hermaphroditism, **480**
 hermaphroditism, **495**
 heterodont teeth, **392, 396**
 heterosporous, **327, 351**
 heterotroph, **132**
 Heterotrophs, **118**
 heterozygous, **179, 194**
 hippocampus, **436, 441**
 homeostasis, **8, 24**
 homologous chromosomes, **136, 149**
 homologous structure, **270**
 homologous structures, **253**

homosporous, **327, 351**
 homozygous, **178, 194**
 hormone, **51, 441**
 hormone receptors, **421**
 Hormones, **45, 421**
 hornwort, **351**
 hornworts, **333**
 horsetail, **351**
 Horsetails, **335**
 host, **519, 525**
 human beta chorionic gonadotropin (β-HCG), **493, 495**
 humoral immune response, **460, 472**
 hybridization, **194**
 hybridizations, **175**
 hydrogen bond, **33, 51**
 hydrophilic, **34, 52**
 hydrophobic, **34, 52**
 hydrosphere, **537, 564**
 hydrothermal vent, **293, 319**
 hyoid bone, **427, 441**
 hypersensitivity, **469, 472**
 hypertonic, **79, 86**
 hypha, **312, 319**
 hypothalamus, **437, 441**
 hypothesis, **18, 24**
 hypothesis-based science, **19, 24**
 hypotonic, **79, 86**

I

immune tolerance, **468, 473**
 Immunodeficiency, **469**
 immunodeficiency, **473**
 incomplete dominance, **186, 194**
 Inductive reasoning, **18**
 inductive reasoning, **24**
 inferior vena cava, **417, 441**
 inflammation, **457, 473**
 inheritance of acquired characteristics, **250, 270**
 inhibin, **491, 495**
 Innate immunity, **456**
 innate immunity, **473**
 inner cell mass, **483, 495**
 interferon, **457, 473**
 interkinesis, **161, 170**
 internal fertilization, **481, 495**
 interphase, **137, 149**
 interstitial cell of Leydig, **495**
 interstitial cells of Leydig, **485**
 interstitial fluid, **406, 441**
 intertidal zone, **555, 564**

intracellular, **421**
 intracellular digestion, **362, 396**
 intracellular hormone receptor, **441**
 intraspecific competition, **506, 525**
 intron, **220**
 introns, **212**
 ion, **31, 52**
 ionic bond, **32, 52**
 Island biogeography, **521**
 island biogeography, **525**
 isotonic, **80, 86**
 isotope, **52**
 Isotopes, **29**

J

J-shaped growth curve, **505, 525**
 joint, **428, 442**

K

K-selected species, **510, 525**
 karyogram, **164, 170**
 karyotype, **164, 170**
 keystone species, **522, 525**
 kidney, **442**
 kidneys, **406**
 kinetic energy, **95, 113**
 kinetochore, **140, 149**
 kingdom, **276, 288**

L

labia majora, **487, 495**
 labia minora, **487, 495**
 lagging strand, **205, 220**
 lamprey, **396**
 Lampreys, **386**
 lancelet, **396**
 Lancelets, **384**
 large intestine, **411, 442**
 larynx, **415, 442**
 lateral, **387**
 lateral line, **397**
 law of dominance, **179, 194**
 law of independent assortment, **183, 194**
 law of segregation, **181, 194**
 leading strand, **205, 220**
 lichen, **319**
 Lichens, **317**
 life cycle, **170**
 life cycles, **154**
 life science, **24**

life sciences, **18**
 life table, **525**
 life tables, **500**
 light-dependent reaction, **132**
 light-dependent reactions, **121**
 limbic system, **437, 442**
 line, **387**
 linkage, **191, 194**
 Lipids, **42**
 lipids, **52**
 litmus, **37**
 litmus paper, **52**
 liver, **411, 442**
 liverwort, **352**
 Liverworts, **333**
 locus, **136, 149**
 logistic growth, **505, 525**
 Lophotrochozoa, **374, 397**
 luteinizing hormone (LH), **490, 495**
 Lymph, **466**
 lymph, **473**
 lymphocyte, **458, 473**
 lysosome, **86**
 lysosomes, **66**

M

macroevolution, **254, 270**
 macromolecule, **24, 52**
 macromolecules, **9, 39**
 macrophage, **457, 473**
 madreporite, **381, 397**
 major histocompatibility class (MHC) I, **473**
 major histocompatibility class (MHC) I molecules, **458**
 major histocompatibility class (MHC) II molecule, **473**
 mammal, **397**
 Mammals, **392**
 mammary gland, **397**
 Mammary glands, **392**
 mantle, **375, 397**
 mark and recapture, **501, 525**
 marsupial, **397**
 Marsupials, **392**
 mass number, **28, 52**
 mast cell, **473**
 Mast cells, **457**
 Matter, **28**
 matter, **52**
 maximum parsimony, **287, 288**
 medusa, **364, 397**
 megasporocyte, **339, 352**
 meiosis, **154, 170**
 meiosis I, **157, 170**
 Meiosis II, **157**
 meiosis II, **170**
 membrane potential, **442**
 memory cell, **464, 473**
 meninges, **435, 442**
 menstrual cycle, **491, 495**
 mesoglea, **364, 397**
 mesohyl, **362, 397**
 mesophyll, **120, 132**
 metabolism, **92, 114**
 Metagenomics, **240**
 metagenomics, **245**
 metamerism, **379, 397**
 metaphase, **140, 149**
 metaphase plate, **140, 149**
 MHC class II molecule, **461**
 microbial mat, **293, 320**
 microevolution, **254, 270**
 microscope, **56, 86**
 microsporocyte, **352**
 microsporocytes, **339**
 migration, **255, 270**
 mimicry, **516, 525**
 mineral, **442**
 Minerals, **413**
 mismatch repair, **208, 220**
 Mitochondria, **68**
 mitochondria, **86**
 mitosis, **138, 149**
 mitotic, **137, 138**
 mitotic phase, **149**
 mitotic spindle, **149**
 model organism, **245**
 model organisms, **238**
 model system, **174, 194**
 modern synthesis, **254, 270**
 mold, **320**
 molds, **313**
 molecular systematics, **284, 288**
 molecule, **9, 24**
 Mollusca, **374, 397**
 monocot, **352**
 monocots, **347**
 monocyte, **457, 473**
 monoecious, **363, 397**
 monohybrid, **180, 194**
 monophyletic group, **285, 288**
 monosaccharide, **52**
 Monosaccharides, **40**
 monosomy, **165, 170**
 monotreme, **397**
 monotremes, **392**
 mortality rate, **502, 525**
 moss, **352**
 mosses, **334**

mRNA, **210, 220**
 MRSA, **320**
 mutation, **209, 220**
 mutualism, **519, 525**
 mycelium, **312, 320**
 Mycorrhiza, **316**
 mycorrhiza, **320**
 mycoses, **315**
 mycosis, **320**
 myelin sheath, **433, 442**
 myofibril, **442**
 myofibrils, **430**
 myofilament, **442**
 myofilaments, **431**
 Myxini, **385, 397**

N

nacre, **376, 397**
 nasal cavity, **415, 442**
 natural killer (NK) cell, **458, 473**
 natural science, **24**
 natural sciences, **18**
 Natural selection, **251**
 natural selection, **270**
 nematocyst, **397**
 nematocysts, **363**
 Nematoda, **370, 397**
 nephron, **442**
 nephrons, **407**
 neritic zone, **556, 564**
 Net primary productivity, **535**
 net primary productivity, **564**
 neuron, **442**
 neurons, **432**
 neutron, **52**
 Neutrons, **28**
 neutrophil, **458, 473**
 nitrogenous base, **200, 220**
 non-renewable resource, **541, 564**
 noncompetitive inhibition, **100, 114**
 nondisjunction, **164, 170**
 nonpolar covalent bond, **52**
 Nonpolar covalent bonds, **32**
 nontemplate strand, **211, 220**
 nonvascular plant, **352**
 nonvascular plants, **331**
 notochord, **382, 397**
 nuclear envelope, **65, 86**
 nucleic acid, **52**
 nucleic acids, **49**
 nucleolus, **65, 86**
 nucleotide, **52**

nucleotide excision repair, **208, 220**
 nucleotides, **49**
 nucleus, **28, 52, 65, 86**

O

occipital lobe, **436, 442**
 oceanic zone, **556, 564**
 octet rule, **31, 52**
 oil, **52**
 oils, **44**
 Okazaki fragments, **205, 220**
 oncogene, **150**
 oncogenes, **143**
 one-child policy, **513, 525**
 oogenesis, **488, 495**
 open circulatory system, **442**
 Open circulatory systems, **417**
 Opisthokonta, **306, 320**
 oral cavity, **409, 442**
 order, **276, 288**
 organ, **24**
 organ system, **10, 24**
 organelle, **24, 86**
 organelles, **10, 60**
 organism, **24**
 Organisms, **10**
 organogenesis, **484, 496**
 Organs, **10**
 origin, **145, 150**
 osculum, **362, 397**
 osmolarity, **79, 86**
 Osmoregulation, **406**
 osmoregulation, **442**
 Osmosis, **79**
 osmosis, **86**
 osmotic balance, **406, 442**
 Osteichthyes, **387, 397**
 ostracoderm, **397**
 ostracoderms, **385**
 ovarian cycle, **491, 496**
 ovary, **344, 352**
 oviduct, **496**
 oviducts, **487**
 oviparity, **482, 496**
 ovoviparity, **482, 496**
 ovulation, **492, 496**
 oxidative phosphorylation, **105, 114**

P

P, **175, 194**
 pancreas, **411, 423, 442**
 pandemic, **320**
 pandemics, **297**

paper, **37**
 parasite, **320, 519, 525**
 parasites, **305**
 parasympathetic nervous system, **439, 442**
 parathyroid gland, **442**
 parathyroid glands, **423**
 parietal lobe, **436, 442**
 Parthenogenesis, **480**
 parthenogenesis, **496**
 passive immune, **461**
 passive immunity, **473**
 Passive transport, **77**
 passive transport, **86**
 pathogen, **296, 320**
 pectoral girdle, **428, 442**
 peer-reviewed article, **24**
 Peer-reviewed articles, **23**
 pelagic realm, **555, 564**
 pellicle, **320**
 pellicles, **305**
 pelvic girdle, **428, 442**
 penis, **485, 496**
 pepsin, **410, 442**
 peptidoglycan, **295, 320**
 periodic table of elements, **29, 52**
 peripheral nervous system (PNS), **437, 442**
 peristalsis, **408, 442**
 permafrost, **553, 564**
 peroxisome, **86**
 Peroxisomes, **68**
 petal, **352**
 Petals, **344**
 Petromyzontidae, **386, 397**
 pH scale, **37, 52**
 Phagocytosis, **83**
 phagocytosis, **86**
 Pharmacogenomics, **240**
 pharmacogenomics, **245**
 pharyngeal slit, **397**
 Pharyngeal slits, **382**
 pharynx, **415, 442**
 phase, **137**
 phenotype, **178, 194**
 phloem, **334, 352**
 phosphate group, **200, 220**
 phospholipid, **52**
 Phospholipids, **45**
 photic zone, **555, 564**
 photoautotroph, **132, 564**
 photoautotrophs, **118, 535**
 photon, **124, 132**
 photosystem, **124, 132**
 phototroph, **320**

phototrophs, **292**
 phylogenetic tree, **14, 24, 279, 288**
 phylogeny, **276, 288**
 phylum, **276, 288**
 physical map, **245**
 Physical maps, **236**
 physical science, **24**
 physical sciences, **18**
 pigment, **120, 132**
 pinocytosis, **83, 86**
 pioneer species, **524, 526**
 pistil, **344, 352**
 pituitary gland, **422, 443**
 placenta, **493, 496**
 planktivore, **564**
 planktivores, **558**
 plasma membrane, **63, 86**
 plasmid, **228, 245**
 plasmodesma, **86**
 Plasmodesmata, **71**
 plastid, **303, 320**
 pneumatic, **391**
 pneumatic bone, **397**
 polar covalent bond, **32, 52**
 Polymerase chain reaction (PCR), **227**
 polymerase chain reaction (PCR), **245**
 polyp, **364, 397**
 polypeptide, **46, 52**
 polyploid, **167, 170**
 polysaccharide, **41, 52**
 population, **12, 24**
 population density, **500, 526**
 population genetics, **254, 270**
 population size, **500, 526**
 Porifera, **361, 397**
 post-anal tail, **383, 397**
 post-transcriptional, **217, 220**
 post-translational, **217, 220**
 potential energy, **95, 114**
 primary bronchi, **415**
 primary bronchus, **443**
 primary consumer, **564**
 primary consumers, **531**
 primary immune response, **464, 473**
 primary succession, **523, 526**
 Primates, **393, 397**
 primer, **205, 221**
 producer, **564**
 producers, **531**
 progesterone, **491, 496**
 prokaryote, **24**
 Prokaryotes, **10**

prokaryotic cell, **59, 86**
 prometaphase, **139, 150**
 promoter, **210, 221**
 prophase, **139, 150**
 Prosimians, **393**
 prosimians, **398**
 prostate gland, **486, 496**
 protein, **52**
 protein signature, **243, 245**
 Proteins, **45**
 proteomics, **243, 245**
 proto-oncogene, **150**
 proto-oncogenes, **143**
 proton, **28, 52**
 protostome, **398**
 Protostomes, **360**
 pseudocoelomate, **398**
 pseudocoelomates, **360**
 pseudopeptidoglycan, **296, 320**
 pulmonary circulation, **417, 443**
 Punnett square, **180, 194**

Q

quadrat, **501, 526**
 quiescent, **150**

R

r-selected species, **510, 526**
 radial symmetry, **358, 398**
 radioactive isotope, **52**
 radioactive isotopes, **29**
 radula, **374, 398**
 receptor-mediated endocytosis, **83, 86**
 Recessive, **177**
 recessive, **195**
 reciprocal cross, **177, 195**
 recombinant, **158, 170**
 recombinant DNA, **230, 245**
 recombinant protein, **245**
 recombinant proteins, **230**
 recombination, **191, 195**
 rectum, **411, 443**
 reduction division, **162, 170**
 Relative species abundance, **521**
 relative species abundance, **526**
 renal artery, **407, 443**
 renal vein, **407, 443**
 replication fork, **221**
 replication forks, **205**
 Reproductive cloning, **230**
 reproductive cloning, **245**
 resilience, **531**
 resilience (ecological), **564**

resistance, **531**
 resistance (ecological), **564**
 restriction enzyme, **245**
 restriction enzymes, **229**
 reverse genetics, **232, 245**
 Rhizaria, **306, 320**
 ribonucleic acid (RNA), **49, 52**
 ribosome, **86**
 Ribosomes, **68**
 RNA polymerase, **211, 221**
 rooted, **279, 288**
 rough endoplasmic reticulum (RER), **65, 86**
 rRNA, **213, 221**

S

S phase, **138, 150**
 S-shaped curve, **505**
 S-shaped growth curve, **526**
 salamander, **398**
 salamanders, **388**
 salivary gland, **443**
 salivary glands, **409**
 saprobe, **320**
 saprobes, **310**
 sarcolemma, **430, 443**
 sarcomere, **431, 443**
 Sarcopterygii, **387, 398**
 saturated fatty acid, **52**
 Saturated fatty acids, **44**
 savanna, **564**
 Savannas, **549**
 Science, **17**
 science, **19, 25**
 scientific law, **25**
 scientific laws, **18**
 scientific method, **18, 25**
 scientific theory, **18, 25**
 scrotum, **485, 496**
 sebaceous gland, **398**
 Sebaceous glands, **392**
 secondary consumer, **564**
 Secondary consumers, **531**
 secondary immune response, **465, 473**
 secondary plant compound, **590**
 secondary plant compounds, **572**
 secondary succession, **523, 526**
 selectively permeable, **77, 86**
 Semen, **485**
 semen, **496**
 semiconservative replication, **205, 221**
 seminal vesicle, **496**

seminal vesicles, **486**
 seminiferous tubule, **496**
 seminiferous tubules, **485**
 sensory-somatic nervous system, **437, 443**
 sepal, **352**
 sepals, **344**
 septum, **145, 150, 313, 320**
 Sertoli cell, **496**
 Sertoli cells, **485**
 set point, **404, 443**
 sex determination, **481, 496**
 sexual reproduction, **478, 496**
 shared ancestral character, **286, 288**
 shared derived character, **286, 288**
 sister taxa, **279, 288**
 Skeletal muscle tissue, **430**
 skeletal muscle tissue, **443**
 skull, **427, 443**
 small intestine, **410, 443**
 smooth endoplasmic reticulum (SER), **66, 86**
 Smooth muscle tissue, **430**
 smooth muscle tissue, **443**
 solute, **79, 86**
 solvent, **36, 53**
 somatic cell, **157, 170**
 source water, **561, 564**
 speciation, **262, 270**
 species, **276, 288**
 species distribution pattern, **501, 526**
 Species richness, **520**
 species richness, **526**
 species-area relationship, **584, 590**
 spermatogenesis, **488, 496**
 Sphenodontia, **391, 398**
 spicule, **398**
 spicules, **362**
 spinal cord, **443**
 spindle, **138**
 spiracle, **398**
 spiracles, **371**
 splicing, **212, 221**
 spongocoel, **362, 398**
 sporangia, **327**
 sporangium, **352**
 sporophyll, **352**
 sporophylls, **335**
 sporophyte, **157, 170, 327, 352**
 Squamata, **391, 398**
 stamen, **352**
 stamens, **344**

Starch, **41**
 starch, **53**
 start codon, **214, 221**
 stereoscopic vision, **393, 398**
 steroid, **53**
 steroids, **45**
 stigma, **344, 352**
 stoma, **132**
 stomach, **410, 443**
 stomata, **120**
 stop codon, **221**
 stop codons, **214**
 Strobili, **335**
 strobili, **352**
 stroma, **121, 132**
 stromatolite, **293, 320**
 style, **344, 352**
 subduction, **541, 564**
 substrate, **114**
 substrates, **98**
 subtropical desert, **564**
 Subtropical deserts, **549**
 sudoriferous gland, **398**
 Sudoriferous glands, **392**
 superior vena cava, **417, 443**
 surface tension, **36, 53**
 survivorship curve, **503, 526**
 swim bladder, **387, 398**
 sympathetic nervous system, **438, 443**
 Sympatric speciation, **262**
 sympatric speciation, **270**
 synapse, **443**
 synapses, **432**
 synapsis, **158, 170**
 synaptic cleft, **435, 443**
 syngamy, **327, 352**
 Synovial joints, **428**
 synovial joints, **443**
 systematics, **276, 288**
 systemic circulation, **417, 443**
 systole, **418, 443**

T

T cell, **473**
 T cells, **460**
 tadpole, **389, 398**
 taxon, **276, 288**
 Taxonomy, **276**
 taxonomy, **288**
 telomerase, **206, 221**
 telomere, **221**
 telomeres, **206**
 telophase, **140, 150**
 temperate forest, **564**
 Temperate forests, **552**
 temperate grassland, **565**
 Temperate grasslands, **551**
 Temperature, **35**
 temperature, **53**
 template strand, **211, 221**
 temporal lobe, **436, 443**
 tertiary consumer, **565**
 Tertiary consumers, **531**
 test cross, **181, 195**
 testes, **485, 496**
 Testosterone, **490**
 testosterone, **496**
 Testudines, **391, 398**
 tetrad, **171**
 tetrads, **158**
Tetrapod, **383**
 tetrapod, **398**
 thalamus, **437, 443**
 thallus, **312, 320**
 Thermodynamics, **93**
 thermodynamics, **114**
 thoracic cage, **428, 444**
 threshold of excitation, **432, 444**
 thylakoid, **132**
 thylakoids, **120**
 thymus, **424, 444**
 thyroid gland, **423, 444**
 tight junction, **72, 87**
 tissue, **25**
 tissues, **10**
 Tonicity, **79**
 tonicity, **87**
 trachea, **398, 415, 444**
 tracheae, **371**
 tragedy of the commons, **578, 590**
 trait, **176, 195**
trans-fat, **44, 53**
 transcription bubble, **210, 221**
 transduction, **296, 320**
 transformation, **296, 320**
 transgenic, **232, 245**
 Transgenic, **235**
 translocation, **171**
 translocations, **164**
 tricuspid valve, **417, 444**
 triglyceride, **53**
 triglycerides, **43**
 triploblast, **398**
 triploblasts, **359**
 trisomy, **165, 171**
 tRNA, **221**
 tRNAs, **213**
 trophic level, **531, 565**
 trophoblast, **483, 496**

tropical rainforest, **565**
Tropical rainforests, **548**
tumor suppressor gene, **150**
Tumor suppressor genes, **144**
tunicate, **398**
tunicates, **383**

U

unified cell theory, **59, 87**
unsaturated fatty acid, **44, 53**
up-regulation, **422, 444**
ureter, **407, 444**
urethra, **407, 444**
urinary bladder, **407, 444**
Urochordata, **383, 398**
Urodela, **388, 398**
uterus, **487, 496**

V

vaccine, **455, 473**
vacuole, **87**
vacuoles, **67**
vagina, **487, 496**
van der Waals interaction, **53**
van der Waals interactions, **33**
variable, **20, 25**
variation, **252, 270**
vascular plant, **352**
Vascular plants, **331**
vein, **444**
Veins, **420**
ventricle, **417, 444**
vertebral column, **382, 398, 428, 444**
vesicle, **87**
Vesicles, **67**
vestigial structure, **270**
vestigial structures, **259**
vicariance, **263, 270**
viral envelope, **451, 473**
virion, **451, 473**
vitamin, **444**
Vitamins, **413**
viviparity, **482, 496**

W

water vascular system, **380, 398**
wavelength, **123, 132**
wetland, **565**
Wetlands, **562**
whisk fern, **352**
whisk ferns, **336**
white blood cell, **457, 473**
white-nose syndrome, **580, 590**

Whole genome sequencing, **238**
whole genome sequencing, **245**
wild type, **187, 195**

X

X inactivation, **166, 171**
X-linked, **188, 195**
Xylem, **334**
xylem, **352**

Y

yeast, **320**
yeasts, **312**

Z

zero population growth, **505, 526**
zona pellucida, **483, 496**
Zygomycota, **314, 320**