

CONCRETE MIXERS



McNeilus
GET IN.

OSHKOSH CORPORATION AND McNEILUS

SUPERIOR SOLUTIONS TO IMPROVE YOUR BOTTOM LINE.



Founded in 1917, Oshkosh Corporation is a Fortune 500 Company that partners with its customers to deliver superior solutions to safely and efficiently move people and materials at work, around the globe and around the clock. Oshkosh Corporation is a leading designer, manufacturer and marketer of a broad range of commercial vehicles and vehicle bodies, access equipment, specialty military vehicles, and fire and

emergency apparatus. Oshkosh products are valued worldwide for their high quality, rugged reliability and durability.

Oshkosh has manufacturing operations in eight U.S. states and in Australia, Belgium, Canada, China, France and Romania, as well as through an investment in a joint venture in Mexico. The company employs approximately 12,000 people worldwide.



By virtue of its membership in Oshkosh Corporation's Oshkosh Commercial Group (which includes IMT, London Machinery, CON-E-CO and Oshkosh S-Series® mixer vehicles), McNeilus Truck & Manufacturing, Inc., enjoys the distinct advantage of being a recipient of the shared technologies and best practices of these companies known for products of superior performance in the most severe-duty environments.

Our customers are direct beneficiaries of this extraordinary resource.

At McNeilus, our commitment is to listen to our customers and to never stop improving the products, services and innovations that they need to operate more efficiently and effectively.

McNeilus

1970 1973 1976 1977 1979 1980 1981 1983 1988 1990 1997 1998 1999 2003 2009 2010 2013 2014 2015

McNeilus Truck & Manufacturing, Inc., is formed



First stationary plant is built



First McNeilus-brand concrete mixer is introduced



Viking Front Discharge Mixer is launched



Advanced Viking Front Discharge Mixer is introduced
Bridgemaster® I Mixer is introduced, offering improved weight distribution



McNeilus becomes the most popular concrete mixer brand in America

Improved Bridgemaster® II Mixer is introduced with several performance enhancements



Production begins for Front Discharge Mixer system for Oshkosh Corporation



Tuck-A-Weigh trailer axle revolutionizes the industry as a retrofit option for the Standard Mixer

First McNeilus Trailer Mixer is introduced
Bridgemaster® III Mixer is launched with enhanced axle design and higher payload capacity



The Sliding Mixer System® (SMS) makes its debut



Exclusively designed McNeilus-brand Front Discharge Mixer is launched



McNeilus Truck & Manufacturing, Inc., joins Oshkosh Corporation



The state-of-the-art Bridgemaster® V is unveiled



The Revolution® composite mixer drum is introduced



McNeilus develops its own brand of CNG systems
NGEN™ alternative fuels brand is launched



First CNG-powered mixer vehicle comes off the line



Street Smart Parts & Service opens its 22nd U.S. branch location



Command Center touchscreen controls are unveiled

The M80 Series Drum™ is unveiled with lower center of gravity and increased capacity



McNeilus repositions itself and its brands



Street Smart Parts & Service opens its 23rd and 24th U.S. branch location

STANDARD MIXER

The McNeilus Standard and Bridgemaster® mixers are household names with ready-mix producers. Our goal is to make your operation safer and more productive. Add in the McNeilus drum, the industry's benchmark, and the McNeilus mixer becomes a state-of-the-art mobile factory with the highest value and most sustainable cost structure in the industry.

Our dedicated product team drives the industry forward with innovations in controls, lightweight materials, premium components and technology to maximize efficiency. Our staff of engineers allow us to offer several options and configurations to maximize payload, the result being the most replicated truck in the industry. Our in house team of alternative fuel experts have several compressed natural gas configurations to meet the needs of any vehicle in your fleet.

No wonder the McNeilus Mixer sets the pace for mixer fleets on every jobsite. With a reputation for hard work, low maintenance and the most efficient charge/discharge of concrete, you can count on it to help keep your downtime down and your customers happy.



- Easy-to-manuever chute swings smoothly into the pour positions and helps reduce operator fatigue
- Abrasion-resistant electrical harnesses are both color- and function-coded for faster troubleshooting
- New hatch with a closer and more effective seal makes for improved use of space with no true corners, which reduces stress points

- Available with M80 Series and M77 Standard Series drums (M77 - 7, 7.5, 8, 8.5, 9, 9.5, 10, 10.5, 11, 12 or M80 - 10, 10.5, 11, 11.5 yd³) *See drum page for more details*
- Four-step painting process
- Optional strategically positioned drum head impeller to enhance mixing performance for all mix designs
- Extensive option catalog allows you to customize your mixer to meet your application's needs

Popular Options

- Electronic controls, RE and EP
- Command Center Controls
- Aluminum water tank
- Vision systems
- Lightweight chutes
- Hydraulic chute assist
- Flip-up hopper
- SAT hopper
- Head impeller (lined/unlined)
- Split PTO cover
- 46-inch paver discharge opening
- Enviroguard washout
- Chute wash recovery system

BRIDGEMASTER® MIXER

Start with the same features and innovations as on our Standard Mixer. Then add the patented Bridgemaster® load distribution tag axle to truly maximize payload. This relentless workhorse is built to meet your area's weight restriction and roadway laws without compromising performance. Quality-built, worksite-proven and continually improved, the Bridgemaster® works smarter—and harder.

McNeilus delivers the strongest foundation for your mixer investment. From the chassis to the drum (and everything in between) there are lots of ways to customize your McNeilus. No matter what configuration is right for your next mixer, one thing's for sure: it comes equipped with the world's best service and support network.



- Easy-to-manuever chute swings smoothly into the pour positions and helps reduce operator fatigue
- Abrasion-resistant electrical harnesses are both color- and function-coded for faster troubleshooting
- New hatch with a closer and more effective seal makes for improved use of space with no true corners, which reduces stress points

- Available with M80 Series and M77 Standard Series drums (M77 - 9, 9.5, 10, 10.5, 11, 12 or M80 - 10, 10.5, 11, 11.5 yd³) *See drum page for more details*
- Four-step painting process
- Optional strategically positioned drum head impeller to enhance mixing performance for all mix designs
- Extensive option catalog allows you to customize your mixer to meet your application's needs

Popular Options

- Electronic controls, RE and EP
- Command Center Controls
- Aluminum water tank
- Vision systems
- Lightweight chutes
- Hydraulic chute assist
- Flip-up hopper
- SAT hopper
- Head impeller (lined/unlined)
- Split PTO cover
- 46-inch paver discharge opening
- Enviroguard washout
- Chute wash recovery system

SLIDING MIXER SYSTEM®

GLOBAL SF MIXER

The Sliding Mixer System® (SMS) offers maximum payload and dual utilization of equipment. In the stretched mode, the stable ride makes the unit seem smaller and handle well in traffic. In the compressed work mode, the SMS provides better maneuverability and increased discharge height for more production at the site.

The SMS has drum capacity options from 12 to 16 cubic yards with options of a standard 42 inch opening or 46 inch paver opening. Standard, heavy-duty components make the system simple and reliable. In states that exceed 80,000 GVW, extra axles can be added.



Since 1976, McNeilus mixer vehicles have earned a sound reputation for strength, reliability and durability. Today, the number one brand in North America is available across Latin America and around the globe. Built and/or installed through a regional network of professional and experienced distributors and dealers, McNeilus Global SF (subframe) Mixers are built to meet the unique requirements of local producers worldwide.



Standard Features

- 13-cubic yards (15 adj.)
- Approximate 20 ft chute
- 50,000 lb Neway suspension
- AR steel in drums and fins
- High carbon wear rods on fins
- Easy-to-use ladder assembly

- Dual bearing chute pivot system
- Flow fuse
- Electronic throttle and cable-free drum control with 30-inch cord for hand-held pendant
- S-cam brakes

Popular Options

- Air lift charge hopper
- Air chute lock

Key Advantages

- Drum capacity of 6.1 to 10.7 cubic meters (8 to 14 cubic yards) meets the needs of local producers
- Mixer drum design is constructed for superior performance in both dry and wet batch plants
- Consistent installation and integration of mixer systems on a wide range of chassis choices

- Heavy-duty sub-frame built with cross frame reinforcements for added strength and stability
- Engineered to demanding standards and constructed from AR200 abrasion-resistant steel for long life and resistance to acids and other caustic elements
- Standard size drum is built to fit 96 inch wide shipping containers

- Excellent loading and discharge performance due to proven fin geometry, 3/8-inch steel reinforcing bars on fin lips and J-style design
- Field-proven and quality components from respected suppliers for reliability and easier parts replacement
- A distributor and dealer network with comprehensive service and support capabilities

S-SERIES

The S-Series Front Discharge Mixer reflects our number one priority: to help you maximize payload and build your bottom line. By listening to your concerns and incorporating your ideas into our mixers, we can deliver high-productivity vehicles that are safe, reliable and backed by the industry's best support network. For example, you can choose from a wide range of axle configurations to maximize payload—including the industry-proven hydraulically operated Load-Span® tag axle for consistent load control and better off-road maneuverability. The chassis for the S-Series is manufactured by Oshkosh Corporation with their proven designs and intuitive handling based on heavy-duty and military vehicles.

The S-Series also meets the needs of the most important frontline salesperson in your business: the driver. The cab features large windows, an automotive-style HVAC system, and easy-to-read gauges and controls. The high-back seat with armrests and tilt/telescopic steering column further enhance ergonomics. S-Series Front Discharge: It's where your input improves our output.



- Available Cummins/DDB or CNG
- Stainless Steel Fuel Lines
- Industry-Leading Low-Slump Discharging Drum
- Efficient Hood
- Prepainted E-Coat
- Patented Load Span
- Frame Rails
- Safety-Grab Handles and Steps
- Ergonomic Cab
- T-Case
- Front Axle

Experience the Oshkosh Difference

- Parts and service network strategically located to keep your trucks on the job and working hard for you
- In-house testing capabilities that are unmatched in the industry, giving you a product that is proven tough
- Streamlined warranty system gets you back to work faster
- Flex financing programs designed to make it easy for you to obtain the industry's best-built front discharge trucks
- World-class maintenance training available to optimize your vehicles' life cycle cost
- Oshkosh chassis

- Drum capacity of 11 cubic yards and built with abrasion-resistant 1/4-inch AR200 steel and a spun steel head for optimal payload hauling.
- Cab design built with the operator in mind, maximizes leg room, head room and visibility.
- Full walkaround hopper for improved safety and accessibility.

- High-speed chute that extends up to 21 ft., 9 in.
- Front steer axle is easier to maintain and offers a smooth ride, featuring 16.5 in. x 17 in. S-cam brakes with automatic slack adjusters.
- Carries a reputation for durability and dependability – a well-oiled machine built to take on your toughest tasks.



S-SERIES CNG: GREEN RUNS DEEP WITH US.

Oshkosh Corporation, together with McNeilus Truck & Manufacturing, Inc., has engineered and installed CNG systems on more than 5,100 trucks. That experience translates to alternative fuel systems that work hard for you.

CNG Fuel Systems are available on the complete lineup of S-Series Front Discharge Mixers, ranging from three to seven axle configurations. The Cummins Westport ISX G 12 Liter engine is offered in 350hp and 400hp ratings to provide the power you desire to get the job done. Two Type 4 CNG tanks provide a 75 Diesel Gallon Equivalent and are complete with a HDPE liner with carbon fiber wrap and fiberglass shell for longevity. The system utilizes the McNeilus MA20 Fuel Box, which features an NGV1 Fill Port, Defuel Port, Manual Shutoff Valve and Pressure Sensor, ensuring a safe and successful fueling experience.



CNG Advantages

- Reduced fuel costs
- Eliminates complexity of Diesel Engine Aftertreatment and Diesel Exhaust Fluid (DEF)
- Significant reduction in engine noise
- American-sourced fuel
- Reduction in business carbon footprint

Why Buy an S-Series?

- Complete design validation of CNG fuel system in our industry-leading test facilities
- Superior parts and service network available to support your CNG needs
- World-class CNG fuel system package is designed to optimize visibility and serviceability

UPGRADE YOUR FLEET: THE GLIDER WAY.

The S-Series Front Discharge Glider Program delivers you an economic way to upgrade your fleet while getting the most out of your used powertrain and drivetrain components from your exhausted chassis. Our team will work with you one-on-one to ensure your needs are met. Making your fleet work for you is our top priority.

Glider Advantages

- Used components are combined with a new, industry-proven Oshkosh chassis and McNeilus mixer package
- Economic option to update your fleet by reusing costly components (engine, transmission, drive axles)
- Eliminates complexity of Diesel Engine Aftertreatment and Diesel Exhaust Fluid (DEF)*
- New certificate of origin

*Note: Exceptions apply.



Something Old ...

Optional to reuse any of the following:

- Front steer or rear tandem axles
- Engine (reuse or provide as a core toward a ReCon Cummins engine)
- Transmission (reuse or provide as a core toward a Reman Allison transmission)
- Transfer case
- Wheels
- Tires

Something New ...

Aside from the components you choose to provide, Oshkosh provides new parts on the rest of the truck, which could include:

- Frame
- Cab
- Plumbing, wiring, harnesses
- Mixer package
- Paint

McNEILUS COMMAND CENTER TOUCHSCREEN ELECTRONIC CONTROLS

McNeilus Command Center touchscreen electronic controls are engineered specifically for ready-mix vehicle applications and offer ready-mix producers a greater level of performance and control. The innovative, driver-friendly touchscreen and available joystick controls are intuitive and easy to use, and set the new industry standard.

“Heads-Up” Touchscreen Display and Easy-to-Operate Controls

- J1939 interaction with the OEM means reduced wire count and smaller harness sizes
- Dashboard mounted and equipped with variable backlighting for easy viewing
- Enables complete mixer system monitoring on one convenient screen
- Doubles as backup/jobsite camera monitor to reduce dash-mounted components (camera is optional)
- Built-in provisions for digital slump and Bridgemaster pressure readings; eliminates need for in-cab hydraulic hoses and analog pressure gauges
- IP67 rated; protected against water and dust intrusion for reliability

Convenient Digital Keypads

- IP67 rated for durability against weather and jobsite compounds
- Simple and reliable hookup



- System status LEDs for each primary mixer function give operators real-time system monitoring at each keypad
- Dramatically reduced wiring count for enhanced reliability

Innovative Features

- Optional proportional joystick (electronic drum controls only) gives operators real-time “feel”

with the added controllability of fully proportional controls, and speed and direction indicators

- Convenient LOAD mode (electronic controls only) provides simple one-touch operation during the loading cycle
- Convenient MIX mode (electronic controls only) enables precise mixing for jobs that require it without additional outboard controls, counters, etc., and it’s customizable



- Automatic CONSTANT SPEED mode (electronic controls only) provides for “hands off” drum speed control and better mix integrity; reduces chances of lost loads due to overmixing while saving wear and tear on your drum, rollers and roller track
- FLEET MANAGER mode allows for enhanced customization resulting from different operator skill sets and different job requirements
- Optional onboard digital slump calibration and readout with two separate job profiles
- Oil temperature readout

Built-In Enhancements

- Rear keypad timeout and speed interlock reduce risk of errant control inputs in transit or on jobsite
- Bridgemaster STOP control at rear of truck
- Optional “Hopper Down in Reverse” functionality
- Optional “Automatic Camera in Reverse” functionality for enhanced driver visibility during backing operations (can be turned on or off)
- Optional “Work Lights in Reverse” functionality for enhanced jobsite visibility in low light conditions (can be turned on or off)



Complete system monitoring



Available digital slump readout and water/chemical add controls



Lift axle controls with Bridgemaster pressure monitoring (option)

EVERY WELD. EVERY FIN. EVERY DETAIL.

DRIVES PERFORMANCE.

OPERATOR ASSURANCE

McNeilus mixer drums are all about performance: heavy-duty, high-efficiency, long-haul performance. We have two drum options our Standard M77 Series Drum with 77-inch head diameter and our M80 Series Drum with 83-inch head diameter. Our manufacturing process with automated drum line ensures consistency and quality. The robotic controlled rollers allow for the truest drum in the industry. From our people who build your mixer to the parts and components, we settle for nothing but the best.

McNeilus M80 Series Drum

Delivers enhanced productivity with an increased capacity and a low mass forward design (LMFD). Fit an 11-1/2 yd³ volume drum in less space than a traditional 11-yard drum. Patented drum design keeps the mix closer together and moves the center of gravity down leading to more efficient mixing that exceeds industry standards.



*M77 Series Drum shown

Our drums create a state-of-the-art production facility on wheels.

Manufacturing processes optimized over tens of thousands of drums. The result? A drum that maximizes performance and productivity. Quality that says, "Bring It On."



*M80 Series Drum shown

Effective washout:
Optional larger weep holes in key areas enhance washout

Fins:
Legendary formed fins for unmatched performance

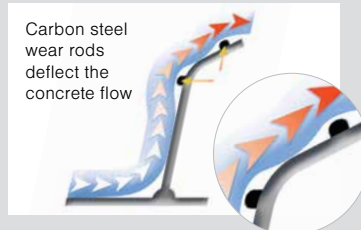
Strength & Structure:
Built with AR200 abrasion-resistant steel and 100% solid seam welds

Reduced wear:
Strategically placed wear plates

Head impeller option:
Optimally placed impeller enhances mixing performance for all mix designs

Carbon steel protects the fins. The fins optimize the flow.

A pair of 3/8-inch high carbon steel wear rods are engineered into key areas of the primary mixer fins. These deflect the flow of concrete away from high-wear areas to provide increased life and more productivity.



Carbon steel wear rods deflect the concrete flow

All the features you need to improve operational peace of mind.

- Street Smart Vision systems
- Command Center controls
- Improved ladder design
- Step bumper
- Strobe light package
- Night pour lights
- Upper ladder gate (standard)
- Foldover stop (standard)
- Roller guards
- Rear pedestal access holes (standard)
- Hydraulic chute assist
- Rock blocker
- Plus many more...



Step bumper



Hydraulic chute assist



Upper ladder gate (standard)



NGEN™ CNG powered by McNeilus

CERTIFIED. POWERFULLY EFFICIENT. COST EFFECTIVE.

McNeilus Next Generation (NGEN) initiatives promote alternative-fuel-powered solutions for heavy-duty fleets of all types. NGEN initiatives are supported by a comprehensive, factory-direct sales and service network. McNeilus is leading the drive toward the next generation of vehicle solutions.



McNeilus CNG-powered ready-mix trucks are built for the rugged construction environment. Designed with the operator and service team in mind, they are configurable to meet your needs. We've led the way in offering ready-mix producers a fully tested and integrated CNG system. And now it's even better.



Fuel Control Module

- Time filling or fast-filling configurations
- Swing-open maintenance door for accessing coalescing filter and bleeder valve
- Remote fill ports that utilize the internal check valve
- Standard cap buzzer for fueling hose connection alert to help stop “drive-offs”
- Standard NGV1 fueling receptacle
- Optional transit fill (higher flow) receptacle

Fuel Storage Pod

- Boss-mounted tanks and integrated 3/16-inch steel guards
- Tanks are exclusively ANSI NGV 2 Type 3 & 4 for light weight and long life
- 40 to 86 Diesel Gallon Equivalent (DGE) systems to meet your fleet requirements
- All-aluminum covers are easily removed for inspection and service
- Designed to maximize ground clearance

Plumbing

- CNG-formed lines, O-ring face seal fittings and 5,000 psi working pressure
- Spring strain relief at fittings prevent fatigue and damage
- Minimal connection points to deliver consistent, reliable fuel flow
- Continuous protection thermal pressure relief devices for protection of the entire tank length and reduced high pressure plumbing
- Entire system fully integrated into chassis

Factory Installed and Backed

- CNG systems installed, fueled and tested at the factory
- More than 5,100 CNG vehicles in the field
- Meets all NFPA-52 Standards
- Factory-owned service centers stock parts and components
- Factory-trained service personnel for 3-year, 36,000-mile FMVSS 304 inspections

▲ WHAT'S NEW: Twin Vertical CNG Configuration

- Assembly bolts to the front pedestal and shares its structural strength
- Free up frame space for chute storage, tanks and other components
- Maximizes ground clearance
- Allows pusher axles to be added to a Standard mixer
- Provides an unobstructed view down both sides of the mixer
- Two-40 DGE tanks for a combined 80 DGE total

STREET SMART BY McNEILUS

We stock parts for all makes & models. And we deliver quality.

On the job you need performance—not excuses. We work hard to be there with what you need, when you need it. Count on our direct-to-you parts and service network, and a complete line of top quality OEM parts and components for all makes and models.

Buy once. Buy right. Buy smart.

Our customer service representatives are seasoned industry veterans—and they're ready to take your call. Twenty-eight factory direct locations across North America mean you have access to an extensive on-hand parts inventory. Get back on route quickly, cost-effectively and with the assurance of OEM quality.

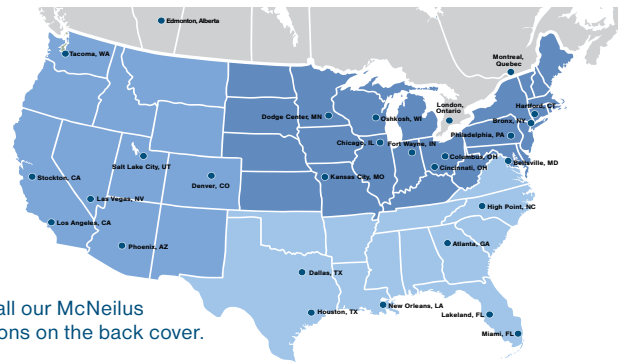
Full service and on the road.

Along with parts, we offer exceptional service, including maintenance, repair and mobile on-site assistance at our service locations across the country.

STREET SMART

BY McNEILUS

McNeilus has more than 50 mobile service trucks and branch locations across the country, with our technical support staff standing by ready to serve you.



Street Smart meets web savvy.

Our dedicated parts website provides a “one-stop shop” for both parts and information. Order from our eCatalog, or access interactive parts catalogs, service/operators’ manuals, technical bulletins, safety signs and a host of other documents. Browse, search and toss a few things into your shopping cart. Print and pay invoices and even track your fleet info.

Questions?

View the site’s FAQs and Help section, which includes a tutorial video.

If you’re looking for a “no excuses” partner who can keep your fleet up and running, contact us at www.StreetSmartParts.com.

STREET SMART PARTS™

YOUR UPTIME IS OUR PRIORITY.

No matter what makes or models are in your fleet, McNeilus offers a wide selection of quality replacement parts that are always a call or click away. With 28 factory direct locations, the parts you need are always nearby and shipped quickly.



You'll find quality OEM McNeilus parts designed specifically for our products by our experienced and knowledgeable engineers, as well as parts we've improved on to fit most major competitors. All delivered whenever you need, wherever you want and at a reasonable price. And, our easy-to-use website means you can find parts easily, order them securely or just download a catalog. When it comes to your trucks, we've got what you need.

www.StreetSmartParts.com
888.686.7278



STREET SMART SERVICE™

UNMATCHED SUPPORT WHEREVER YOU NEED IT.

When you GET IN with McNeilus, you get the industry's most extensive network of service centers and certified technicians combined with a technical support hotline and mobile on-site assistance across the nation.



Give New Life to Your Equipment. ▶

Our Street Smart Service™ includes a complete body refurbishment program – for all makes and models — to help you save money, reduce downtime and keep your fleet running strong. Refurbishments can include:

- Hydraulics
- Electrical
- Cylinders
- Drums
- Gear Box
- Water System
- Axles
- Paint

Help is Just a Phone Call Away

Find the answers you need with one simple call to 888.686.7278. Our support hotline is available 24/7, and McNeilus' technical service representatives offer a combined 137 years of experience to assist you with anything from a quick shop manual question to more technical troubleshooting.



STREET SMART VISION™

BETTER VISION FOR DRIVERS. BETTER TRACKING FOR YOU.

Street Smart Vision™ by McNeilus provides fleet management solutions to improve operations, increase profitability, and provide complete visibility for fleets of all types. We've got you covered with multiple systems and flexible options that fit your needs. Complete visibility into truck and driver behavior. Plus, enhanced safety and security.



High-definition monitors and a series of cameras allow drivers a broader view of their surroundings. McNeilus installs, services and supports its vision systems through an expanding network of service centers across North America. Ask about our full line of Street Smart Vision™ products.



SSV Camera

- Designed for use in the harshest of environments
- Deliver high-quality video and audio
- 120-degree lens angle
- Waterproof
- Microphone equipped
- Infrared LED lighting

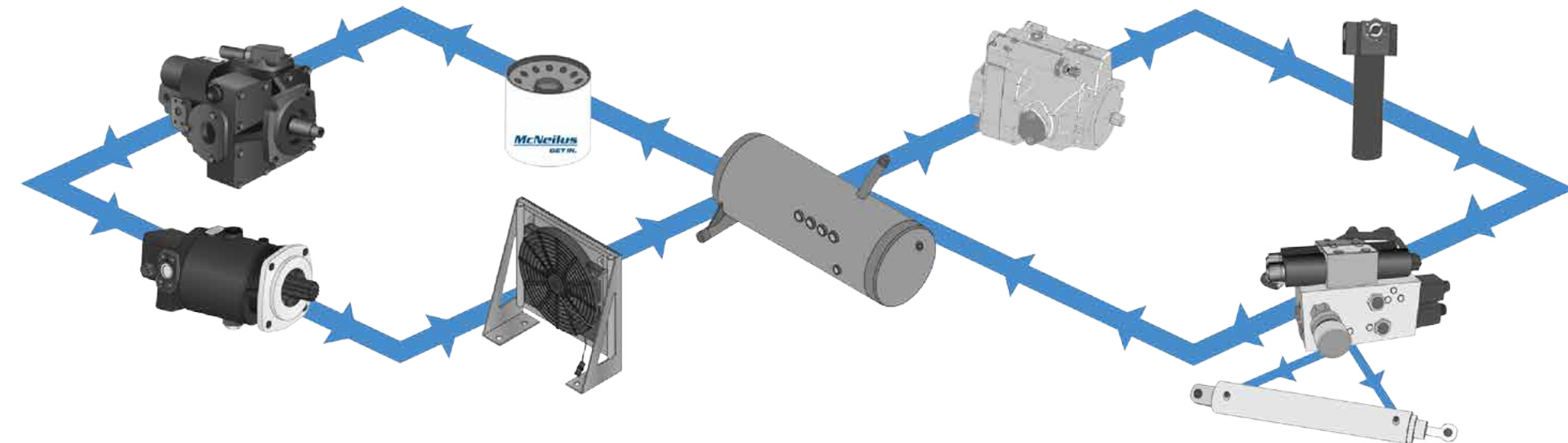
SSV7 System

- High-quality 7-inch LCD digital monitor
- Supports up to 4 cameras
- Single viewing option, with capability to cycle cameras
- Supports English, Spanish, French, Portuguese, Russian, Dutch, German and Italian
- Back-up view on-screen display
- LED backlit buttons



CONTAMINATION CONTROL

KEEP YOUR FLEET RUNNING CLEAN AND SMOOTH.



MIXER HYDRAULIC FLUID CYCLE



Your hydraulic fluid cycles through many parts and components in your mixer, as shown above in the Mixer Hydraulic Fluid Cycle. Keeping your trucks' hydraulic fluid in top shape is key to a healthy fleet. A filter maintenance schedule is just the beginning. Street Smart Contamination Control™ offers the components and solutions needed to monitor and maintain optimal fluid cleanliness taking your fleet to the next level.

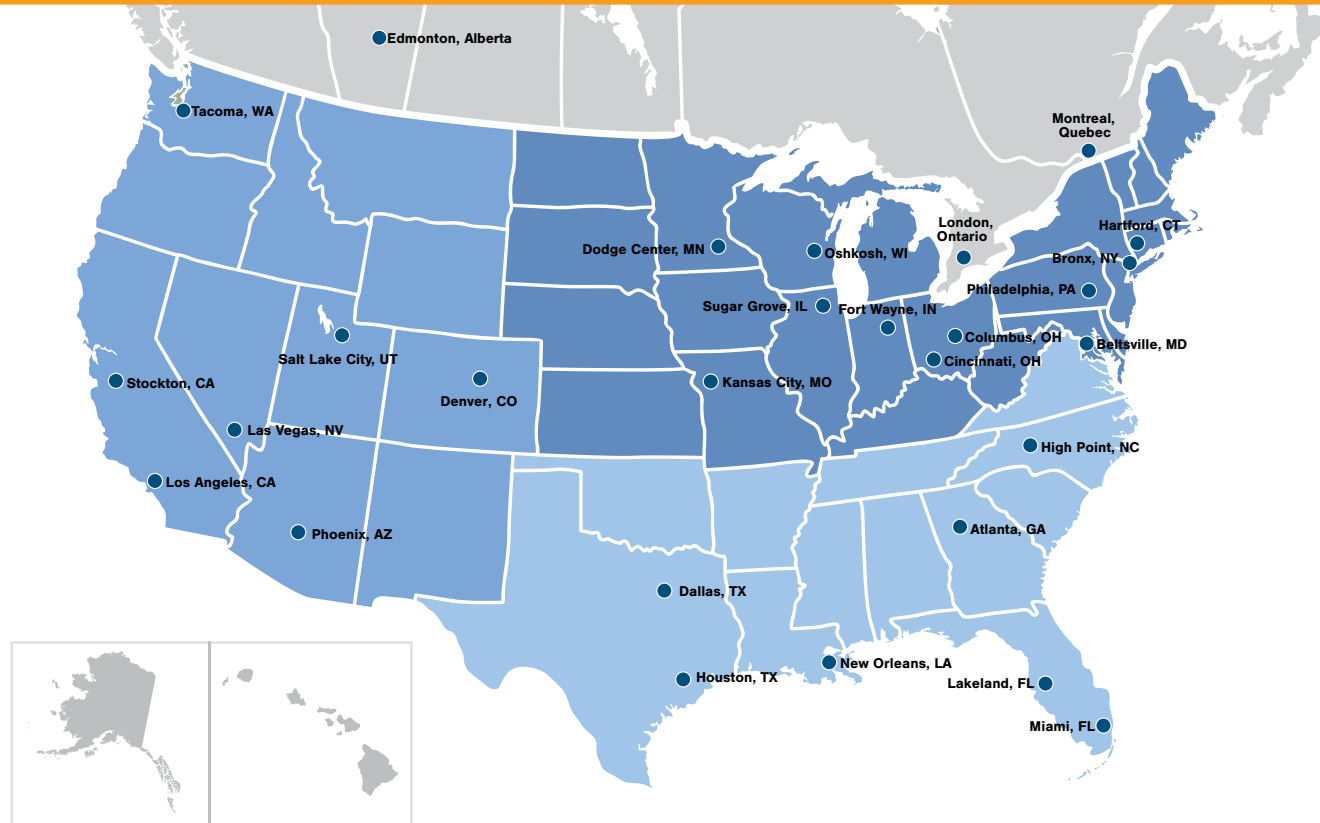
Why monitor hydraulic contamination?

- Up to 80% of all hydraulic system failures are directly related to contamination.
- System efficiency can drop by up to 20% before an operator even detects a problem.
- Optimal fluid cleanliness increases component life and lowers operating costs.

WE'VE GOT YOUR BACK. PERIOD.

We listen to our customers before, during and after the sale. Contact our dedicated network of branch offices and service centers. They're strategically located throughout North America. We offer same-day parts shipments, 24/7 response, a stock truck program, leasing and financing options. We're standing by to answer questions.

We also have parts and replacement drums for non-McNeilus products that will bring new life to your entire fleet.



McNeilus

An Oshkosh Corporation Company

McNeilus Dodge Center

524 East Highway St.

P.O. Box 70

Dodge Center, MN 55927

507-374-6321

Street Smart Parts: 888-686-7278



www.mcneiluscompanies.com



www.StreetSmartParts.com

www.facebook.com/mcneilusconcrete

© May 2016 McNeilus Truck & Manufacturing, Inc. McNeilus, the McNeilus logo and Bridgmaster are registered trademarks of McNeilus Truck & Manufacturing, Inc., Dodge Center, MN, USA. Oshkosh and the Oshkosh logo are registered trademarks of Oshkosh Corporation, Oshkosh WI, USA. All other designated trademarks are the property of their respective owners. Specifications, descriptions and illustrations in this brochure are accurate as shown at the time of publication, but are subject to change without notice. Images may include optional equipment and accessories and may not include all standard equipment.