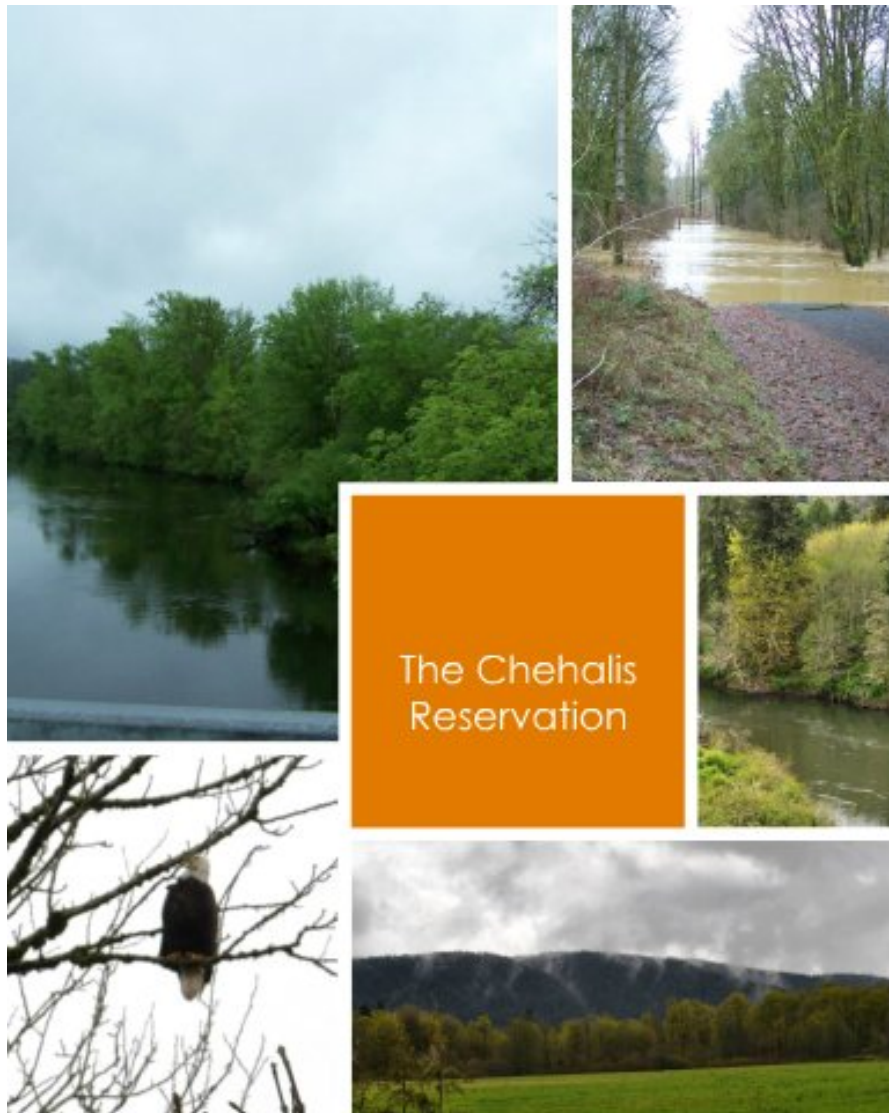


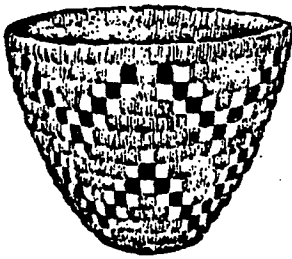
Confederated Tribes of the Chehalis Indian Reservation's Park and Recreation Plan



Jenee Penn

Planner

3/26/2014



CONFEDERATED TRIBES of the CHEHALIS RESERVATION

Resolution No. 2014-017

RE: Submission of FY2014 Chehalis Indian Reservation's Park and Recreation Plan

Whereas: The Business Committee of the Confederated Tribes of the Chehalis Reservation is the duly constituted governing body of the Chehalis Indian Tribe, in accordance with the Constitution and By-laws adopted by voting members of the Tribe and approved by the Commissioner of Indian Affairs; and

Whereas: The Business Committee is responsible for protecting and enhancing the social, health, educational and economic well-being of Tribal Members; and

Whereas: The Tribe has jurisdiction over the Chehalis Reservation and all trust lands in Indian country,

Whereas: The Tribe is advised of the availability of funds through the State of Washington's Recreation and Conservation Office,

Whereas: Section 2 of the State of Washington and Conservation Office's Manual 2 states that a comprehensive plan is required to establish eligibility in four programs including the Boating Facilities Program, Land and Water Conservation Fund, Nonhighway and Off-Road Vehicle Activities and Washington Wildlife and Recreation Program organizations.

Now Therefore Let It Be Resolved: That the Business Committee does hereby authorize the submission of the Confederated Tribes of the Chehalis Indian Reservation's Park and Recreation, for a project period of March 1st, 2014 through September 30th, 2020,

Certification: This Resolution, Number 2014-017, was duly considered and approved at a regularly scheduled meeting of the Chehalis Business Committee held on February 24th, at which a quorum was present. The vote being 4 For, 0 Against, with 0 Abstentions and with the Chairman not voting.

Signed:

David Burnett,
Chairman

Attested:

Cheryl Starr,
Secretary



February 24, 2014

Dear Sir or Madam:

As the members of the Chehalis Tribe's Park Planning Team, we are writing to express our full support for the Chehalis Tribe's Park and Recreation Plan.

The Chehalis Tribe's Park Planning Committee offered community input into the planning process through meetings and surveys. We agree with the priorities set forth in this plan including the possible capital projects list.

Our group will continue to work with the Planning Department to execute the plan. We will meet quarterly and provide feedback on community needs and interests.

Sincerely,

Dianne Decker

Phil Y-KP

Christine Bennett

Dave K

Evelyn Penn

Theresa Yonetta

Melvin Yonetta

Joyce McCroy

Confederated Tribes of the Chehalis Reservation’s Comprehensive Park and Recreation Plan

Chehalis Tribal Business Committee

- Chairman: David Burnett
- Vice Chairman: Hector “Barnaby” Canales
- Secretary: Cheryle Starr
- Treasurer: Farley Youckton
- Fifth Council Member: Daniel “Bones” Gleason

Chehalis Tribe’s Park Planning Team

- | | |
|---------------------|-------------------|
| Christibeth Burnett | Christine Ortivez |
| Calvin Cayenne | Evelynn Penn |
| Diane Devlin | Jamie Smith |
| Jason Gillie | Beverly Starr |
| Andria Hawkes | Joyce Thomas |
| Dustin Klatush | Derek Youckton |
| Elaine McCloud | Melvin Youckton |
| Joyleen McCrory | Philip Youckton |
| Anthony Olney | Theresa Youckton |

Table of Contents

Introduction.....	3
Community Profile.....	4
Demand and Need Analysis.....	8
Inventory.....	14
Community Center.....	16
Park on Makum.....	17
Tomahawk Stadium.....	18
Legends Field Complex.....	19
Vosper Community Park.....	20
Sidewalks.....	21
Recreation Sites Near Reservation.....	22
Public Involvement.....	24
Youth Survey Analysis.....	24
Adult Survey Analysis.....	30
Goals and Objectives.....	38
Five Year Objectives.....	40
Short Term Objectives.....	41
Potential Capital Projects.....	43

Introduction



The Chehalis Tribe's Park and Recreation Plan serves as an expression of the community's objectives, needs and priorities for recreational planning. This plan was developed in conformance with the Washington Statewide Comprehensive Outdoor Recreation Plan (SCORP) to provide a framework and objectives for the comprehensive park and recreation planning for the Confederated Tribes of the Chehalis Indian Reservation.

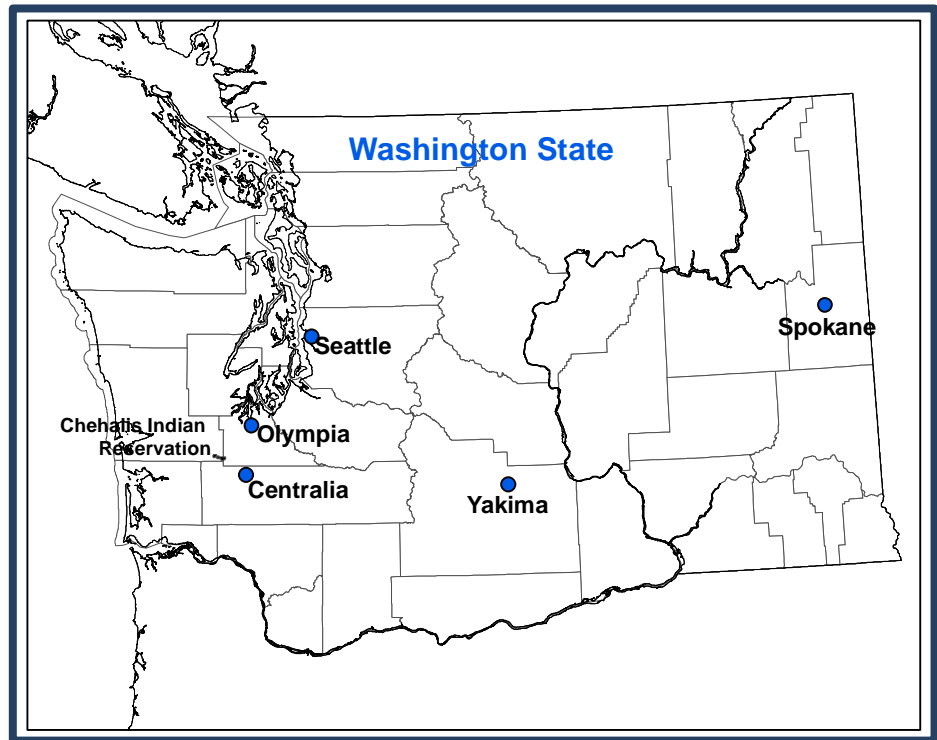
To anticipate the needs of a changing community, the Plan balances present deficiencies in the recreation system with future needs and requirements. This analysis of the Tribe's park and recreation system focuses on the projected characteristics and economic base of the community and provides the basis for federal and state financial assistance.

In compliance with the requirements of the Washington State Recreation and Conservation Office (RCO) all elements necessary to qualify the Tribe for recreation funding are included in this plan:

- Goals and Objectives
- Inventory of existing sites and facilities
- Public Involvement
- Demand and need analysis
- Capital Improvement Program
- Local adoption

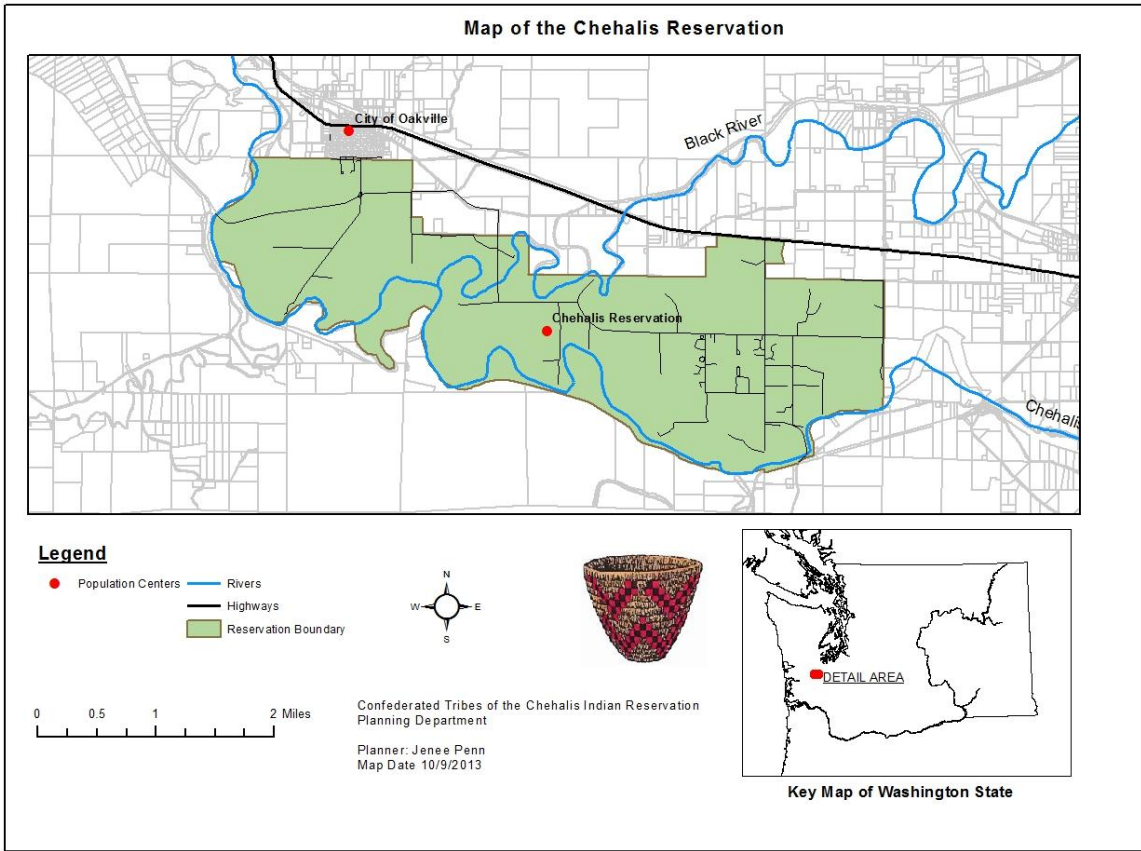
Community Profile

The Confederated Tribes of the Chehalis Indian Reservation is located in southwest Washington State, approximately 26 miles southwest from Olympia, the state capital. The Chehalis Tribe traditionally lived within the Chehalis River watershed, stretching from the



foothills of the Cascade Mountains to the Pacific Ocean in Southwest Washington. Modern day Aberdeen, Olympia and Centralia are all within the Tribe's aboriginal area.

The reservation is a rural agricultural community with low density residential dwellings, farms, prairies, forest and wetlands located in both Grays Harbor and Thurston counties. The Chehalis Reservation is dominated by the current and historical paths taken by the Chehalis and Black Rivers. The current river channels within the reservation contain approximately 10 river miles of the Chehalis River and approximately 3 river miles of the Black River. There are many wetlands, sloughs and oxbow ponds that are remnants of old river channels. The climate is maritime with cool, dry summers and mild, wet winters. The annual precipitation is 47 inches.



The 4,849 acre Chehalis Reservation is a mix of tribally owned land, individual-owned land and fee land. Before European Contact, the Chehalis people occupied all land in the Chehalis Basin, living in multiple villages along the Chehalis River and its tributaries. In 1864 the Chehalis Reservation was set aside for the tribe. Land allotments were given to Chehalis tribal member head-of-households to build homesteads and establish farms. These allotments were held in trust by the Bureau of Indian Affairs with



the land belong to the allottee and his heirs in perpetuity, inalienable and nontaxable. Additional land on the reservation was set aside for public use by all enrolled tribal member for a school and community buildings .

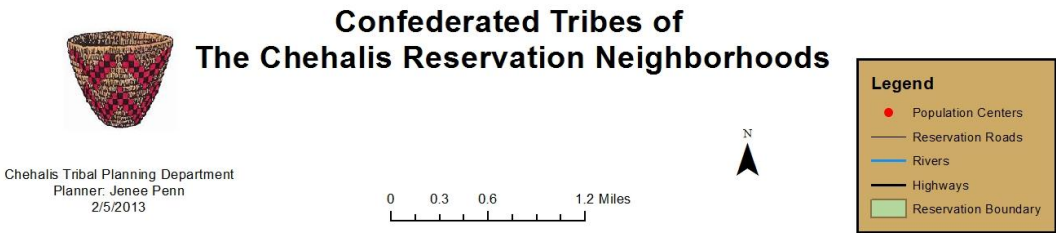
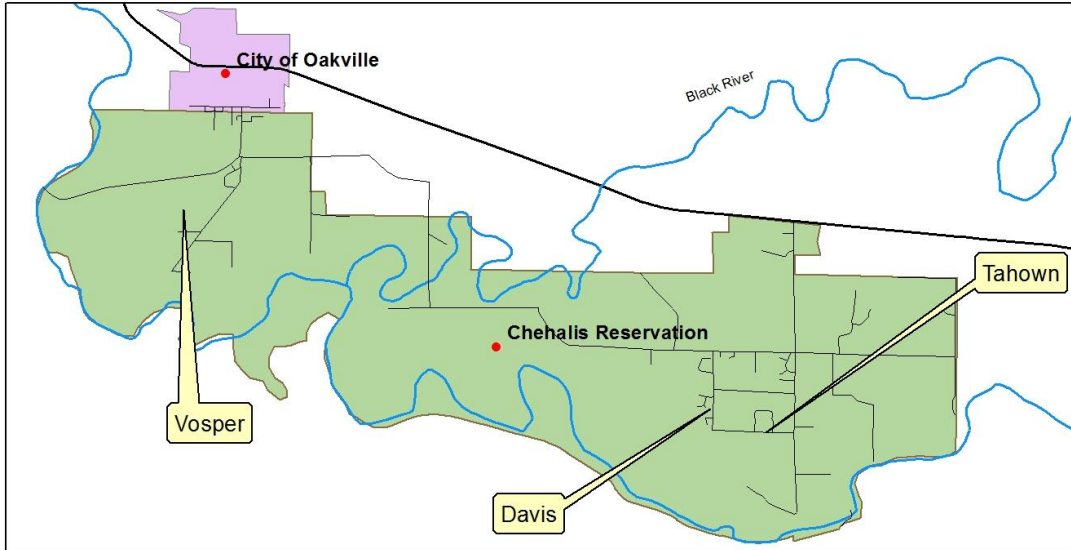
Through the year land ownership has changed on the Chehalis Reservation. Some allotments were sold to non-Indians. Allotments that were still owned by the original Indian-allottee and their heirs now have multiple owners as the descendents of the original owner have increased. Some properties on the Chehalis Reservation now have over 200 owners, all the children, grandchildren, great grandchildren and great great grandchildren of the original allottee.



Land ownership has changed over the years. The Chehalis Tribe actively purchases lands for the benefit of tribal members. Lands purchased include land in the tribe’s usual and accustomed areas as well as properties for the tribe’s economic sustainability. In 2011, the tribe’s reservation boundaries expanded by 214 acres.

Land Owned by the Chehalis Tribal Government as of 2014

	Reservation	Trust	Fee
Grays Harbor County	1,258	343	1,525
Thurston County	316	122	399
Total	1,574	465	1,924



The Chehalis Reservation is home to 649 individuals based on 2010 census estimates, with the majority of houses on the eastern portion of the reservation. The Tahown housing

development was constructed in the 70’s. Homeowners

were able to purchase single-family homes through a

Housing and Urban Development program. The Davis

housing development is composed of all rental

properties. In the Davis housing complex there are apartments, duplexes, townhouses and

single-family homes. The newest addition to tribal housing on the reservation is to the western

portion of the reservation in the Vosper neighborhood. In Vosper, there are 10 apartments and

11 houses. Development on the eastern portion of the reservation has reached capacity and

future housing development will have to take place on the western portion of the reservation.

Reservation Population	649
Number of Homes	199
Average Family Size	3.95

Demand and Needs Analysis



The majority (56%) of the people residing on the reservation are under the age of 25 and 41% of the population is younger than 18.

The average age of residents of the Chehalis Reservation is 22 versus 37 in Washington.

With a younger population than the state,

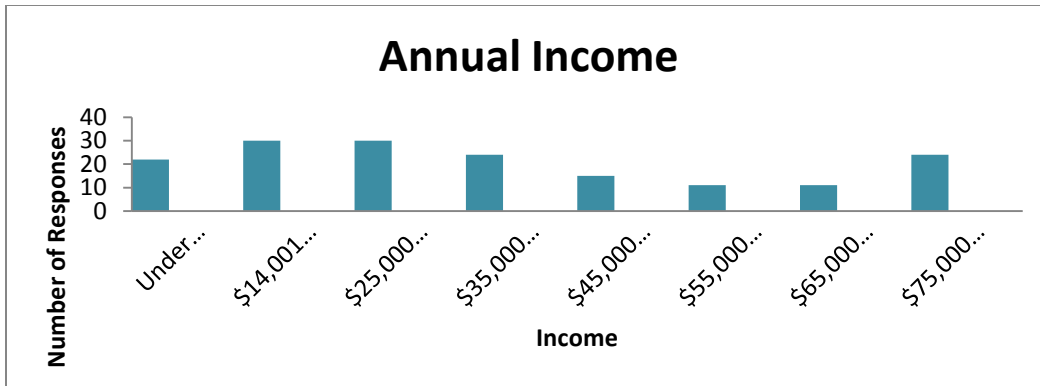
future design efforts should take into account the younger user age.

Ages of Chehalis Tribal Members	
Total enrolled members in 2013	875
0 – 9	159
10 – 19	166
20 – 29	157
30 – 39	118
40 – 49	108
50 – 59	95
60 – 69	47
70 – 79	16
80+	9

Source: Chehalis Tribal Enrollment

The median income of Chehalis tribal members is \$30,000. This is 28 percent lower than the Washington State median income of \$48,438 according to Census 2000 data.

The Chehalis Tribal population is younger than the population of Washington State with most (56%) under the age of 25.



Source: Chehalis Reservation Community Assessment Survey, 2009

The Chehalis Reservation has a growth rate of about 17%. This is almost double the average population growth for white residents of the United States of America according to the 2010 census.

Total Tribal Member Population	
Total Population in 2014	894
Population growth	17%
Projected Growth by 2024	1046
Projected Growth by 2034	1234

Households and Families on the Reservation	
Total Households in 2010	213
Average Household Size in 2010	3.71
Household Growth Since 2000	24%
Projected Households in 2020	264
Total Families in 2010	165
Average Family size in 2010	3.95
Family Growth since 2000	63.0%
Projected Families in 2020	269

According to United States Census Bureau Estimates residents of the Chehalis Reservation have a much larger household size than Washington state; 3.71 compared to 2.5 individuals per house.

The Chehalis Tribe has designated Level of Service Goals to meet the unique needs of Chehalis Tribal community in the following categories: Community Parks, Community Center, Sidewalks/Trails and Baseball/Softball Fields.



	Level of Service per 1000	Level of Service Goal	# needed to meet goal 2014	# needed to meet goal 2034	Deficiency 2014
Community Parks (acres)	0.8	6	5.2	7.2	-5.2
Community Center (square feet)	50000	50000	0	60000	0
Sidewalks/Trails (miles)	2	10	8	12	-8
Baseball/Softball Fields (fields)	4	6	2	2.4	-2

There are many recreational activities of interest to Tribal Members on the Chehalis Indian Reservation. Popular recreational activities include basketball, baseball, all terrain vehicle use and fishing.

- **Basketball-** The Chehalis

Tribe hosts men’s, coed and youth basketball tournaments throughout the year. Tournaments are usually native only, and the Chehalis Tribe competes against



neighboring tribes. The games are played in the Tribe’s Community Center Gym where there is plenty of room for the many spectators. To prepare for tournaments basketball players participate in weekly open gym practices. One popular annual event is the Harlem Crowns game. The Harlem Crowns travel the country and perform pranks while playing basketball to increase awareness about substance abuse issues. The Chehalis tribe has a youth basketball team, a coed teen team, a coed boy’s team and several men’s teams.

- **Baseball-** The most popular recreational activity historically for tribal members is baseball and softball. The Chehalis Tribe hosts an event called “Tribal Days” held over Memorial Day weekend.

During this event, tribes from all over western Washington travel to compete in men’s hardball, co-ed softball and women’s softball tournaments. It is estimated that a thousand people attend this event

Baseball has been the most popular recreational activity for tribal members historically.

every year. Additional memorial baseball tournaments and wooden bat tournaments are held each summer, as they have been for more than 100 years. The Chehalis The tournament winners

are awarded jackets and sweatshirts. Vendors fill the parking lot to sell fish, fry bread, beadwork and artwork. The baseball tournaments are a social event attended by children, families and elders in the community. Bleachers are packed and often the games are standing room only.

- **Fishing-**

Tribal members utilize the Chehalis River for harvesting salmon and steelhead, in their usual and accustomed fishing sites, as has been done for many generations.

Tribal members utilize the Chehalis River for harvesting salmon and steelhead, in their usual and accustomed fishing sites, as has been done for many generations. The principle fish harvested are: Spring Chinook Salmon, Fall Chum Salmon, Fall/Summer Chinook Salmon and Winter Steelhead. The length of fishing seasons is determined by the tribe’s fishing committee. The Chehalis Tribe has always been concerned about maintaining a healthy level of salmon, and ensuring that salmon are available for future generations. Tribal members who want to fish on the reservation must purchase a fishing license each year. The licenses are only available to Chehalis Tribal members.



For years, tribal members have used an informal boat launch on the river. Presently a formal boat launch has been designed. After required permits are obtained, the boat launch will be constructed.

- **All Terrain Vehicle Use-**

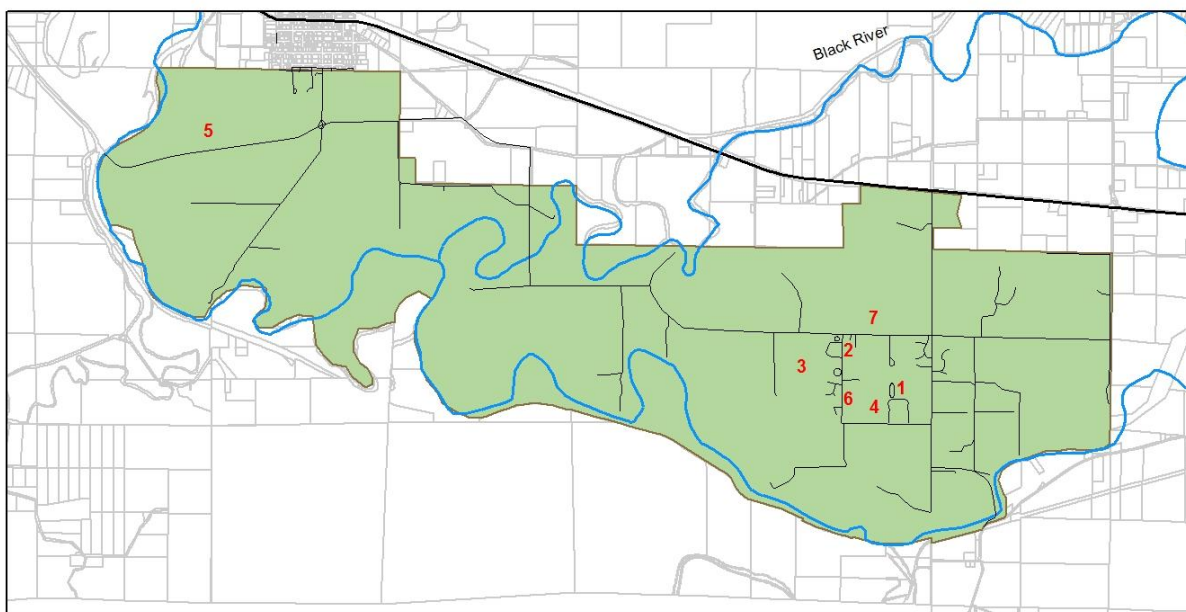
In recent years, all terrain vehicle (ATV) use has increased. Trails used by ATVs are scattered across the reservation. Most of the ATV use occurs in the prairie. With the many woodland areas and prairies, recreational ATV use has become quite popular in the community. Presently there are no formal ATV trails. All the trails that exist have been made by users.



Inventory

Existing park and recreation facilities provide the basis for the Tribe to develop a parks and recreation plan. The inventory of sites and facilities accesses their location, quantity and quality, and provides the basis for comparing the existing supply against present and projected future demand for recreation sites and facilities.

Recreational Facilities on the Chehalis Reservation



Chehalis Tribal Planning Department
Planner: Jenee Penn
10/11/2013

Confederated Tribes of The Chehalis Reservation



0 0.3 0.6 1.2 Miles



Most of the recreational facilities are in the area surrounding the tribal center, on the eastern portion of the reservation. Only the Vosper Community Park is located on the western portion of the reservation. In fact six of the existing facilities are within one mile of each other. Only one park, the Vosper Community Park, exists on the Eastern portion of the reservation.

Facility Amenities								
	Baseball Field	Softball Field	Indoor Basketball	Outdoor Basketball	Pathway	Play Ground	Swimming Pool	Bathrooms
Community Center			X	X	X		X	X
Park on Makum						X		
Tomahawk Stadium		X		X				
Legends Field Complex	X	X				X		X
Vosper Community Park						X		
Niederman Sidewalk					X			
Howanut Sidewalk					X			

The service area for the park and recreational facilities on the reservation is the 3 counties surrounding the reservation: Grays Harbor, Lewis and Thurston Counties. The reservation is located in the Southeast corner of Grays Harbor County and the Southwest corner of Thurston County more than thirty minutes away from major population centers in either county. There are 875 tribal members living mostly in the three counties near the reservation.

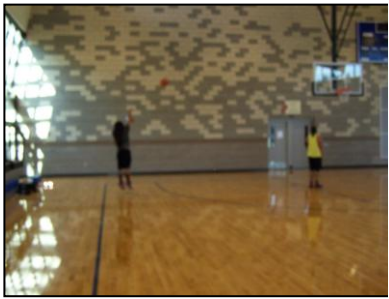
To assess the condition of facilities, the Park Planning Team met and discussed deficiencies. Suggestions for improvements to facilities are listed under each facility description.



The Chehalis Reservation has one indoor recreational facility, the Community Center. There is a Park on Makum Court with playground equipment. Tomahawk Stadium and Legends Field Complex are the two areas tribal member can play baseball or softball games. A community park is in the process of being constructed in the Vosper Community. There are two sidewalks on Niederman and Howanut Road.

Community Center

Square Feet	50,000
Capacity	2500 people
Location	Secena Road on the western portion of the reservation



Description- The community center has an outdoor basketball court, indoor 1,767 sq ft swimming pool and indoor bathrooms. This 50,000 sq ft building was constructed in 2009. Approximately 2,500 people could safely use this facility at the same time but rarely are there more than 400 people. There are two gyms, a workout room, a gathering room and educational classrooms. Various programs on the reservation offer classes to the tribal community. Often classes are held at the Community Center, but space is utilized at the Tribal Center and the Elder’s Center as well. Some of the traditional classes offered include weaving, beading, cradle board making, regalia making and carving. There are also from time to time fitness classes offered including water aerobics and Pilates. This facility has ADA accessible access, including pool access, and ADA compliant restrooms.

Amenities-

- ADA Compliant Restrooms
- Locker rooms with showers
- Pool
- Pool
- Workout Room

Condition-

- | | |
|--------------------|---------------------------|
| Strengths- | Weaknesses- |
| Newer facility | Roof leaks |
| Drinking fountains | No formal fitness classes |
| | Access to facility |

Annual Maintenance and Operational Costs-

\$60,800

Park on Makum



Acreage	.3
Capacity	100 people
Location	Makum Lane on the western portion of the reservation

Description- After nearly 30 years, the Chehalis Tribe updated playground equipment on Makum court in 2012. The new playground equipment features a swing set, with an ADA accessible swing, standard swings and toddler swings. To accommodate children of all abilities there are several ground level play elements. For younger children there is a separate toddler play area with rocking toys and teeter-totter. The park on Makum has a large climbing toy for older children with a climbing wall, rope bridge and multiple slides.

Amenities-

- Picnic table Garbage cans
- Benches

Condition-

Strengths-
New playground Equipment

Weaknesses-
No paths/walkways
Bark fall material
No park specific maintenance
No restrooms

Annual Maintenance and Operational Costs- \$4,900

Tomahawk Stadium



Acreage	3.3
Capacity	100 people
Location	Makum Lane on the western portion of the reservation

Description- In the early 1900's, the Tribe constructed a baseball and softball field at Tomahawk Stadium. There are five bleachers for seating approximately 250 people. Annually, the Chehalis Tribe hosts an event called "Tribal Days" held over the Memorial Day Weekend. During this event, tribes from all over western Washington travel to compete in men's hardball, co-ed softball and women's softball tournaments. It is estimated that 1000 people attended this event and nine men's hardball teams, eleven women's softball teams, and thirteen co-ed softball teams competed in this event in 2011 at Tomahawk Stadium. There is a fish pit to cook salmon traditionally over a fire. No restrooms exist at this facility.

Amenities-

- Picnic table
- Garbage cans
- Bleachers

Condition-

- Strengths-
- Lights on men's ball field

- Weaknesses-
- No Restrooms
 - Old bleachers
 - No park specific maintenance
 - No lights on women's field

Annual Maintenance and Operational Costs-\$7,100

Legends Field Complex



Acreage	7.4
Capacity	500 people
Location	Secena Road on the western portion of the reservation

Description- In 2013, the Chehalis Tribe constructed a new baseball and softball field complex. The new Legends Field Complex features a playground, covered picnic area, softball field, baseball field, restrooms and a concession stand.



Amenities-

- Picnic table Garbage cans Bleachers
- Benches Shelter/picnic area Playground Equipment

Condition-

Strengths-
New playground Equipment

Weaknesses-
No lights
Bark fall material
No park specific maintenance



Annual Maintenance and Operational Costs- \$6,300



Vosper Community Park



Acreage	.5
Capacity	166 people
Location	Sickman Loop on the western half of the reservation

Description- In 2013, the Chehalis Tribe constructed a playground for residents of the Vosper neighborhood. The new playground equipment included swings, slides, spinning toys as well as a variety of climbing features and toys for younger children. Benches and picnic tables are installed for families to enjoy the playground together.



Ammenities-

- Picnic table
- Garbage cans
- Benches
- Playground Equipment

Condition-

Strengths-
New playground Equipment

Weaknesses-
No lights
Bark fall material
No park specific maintenance



Annual Maintenance and Operational Costs- \$4,900



Sidewalks



Miles	2 miles of sidewalk and .6 miles of walk-able shoulder
Capacity	500 people
Location	Secena Road on the western portion of the reservation

Description-

There are 2 miles of sidewalks on the Chehalis Reservation. There is a .6 mile portion of walk-able shoulder on Anderson Road. Residents of the Tahown and Davis neighborhood can walk down sidewalks to Makum Park and Tomahawk Stadium. There are no sidewalk or shoulder to connect residents of these two neighborhoods to the Community Center or Legends Field Complex. In the Vosper housing area, there is a .2 mile sidewalk enabling pedestrian access the Vosper Community Park.

Ammenities-

Benches

Garbage cans

Condition-

Strengths-
Separation from traffic
Green strip

Weaknesses-
No connection to Community Center
No Connection to Oakville

Annual Maintenance and Operational Costs-\$5,000

Recreation Sites Near the Reservation



Brandt City Park: Located in the City of Oakville, about five miles from the reservation, this park features playground equipment for children under five and an outdoor basketball court.

Grays Harbor County Fairgrounds: The fairgrounds are a multi-use facility located in Elma approximately 20 miles from the Chehalis Tribal Center and are maintained mostly by funds generated by user fees and rentals. A number of horse stalls, race track, grandstand and multi-purpose pavilion are all housed on the fairgrounds. In addition to the annual Grays Harbor County Fair, a variety of events are hosted at the fairgrounds including auto races, dog shows and swap meets.

Capitol Sate Forest: The Washington State Department of Natural Resources' Capitol Forest manages the more than 84,000 acres of forest. One entrance to this state park is approximately 10 miles from the Chehalis Tribal Center. The forest is ideal for camping, picnicking, off road vehicle and horseback riding. Recreational shooting and hunting is permitted in Capital State Forest. Various trails are utilized for hiking and mountain biking.

Great Wolf Lodge: The Great Wolf Lodge indoor water park is located in Grant mound Washington, approximately 15 miles from the reservation. The Great Wolf Lodge is a hotel with a 56,000 square feet indoor water park with water slides, wave pool and hot tub.



Vance Creek Park: Located about 20 miles from the Chehalis Tribal Center, this park contains 3 freshwater lakes. This park has ADA accessible restrooms, lakes for swimming and fishing, playground, picnic tables and a paved trail.

Schafer State Park: Schafer State Park is about 34 miles from the Chehalis Tribal Center. This 119 acre park has swimming areas and camp sites along the Satsop River.

Public Involvement

To assess the tribal community's perception of park and recreational facilities and/or activities needs two surveys were administered. One survey was given to youth ages 5 to 18 and another survey was given to adults. Youth participation was recruited at the Chehalis Tribe's Youth Center. The Youth Center operates a very popular after school program. Additional youth participants were recruited at a community park planning meeting. To avoid duplication of youth responses, names of respondents were collected and maintained.

Youth Survey Analysis

Forty-seven youth completed the 8 question youth survey at the Chehalis Tribal Community Center. Children under the age of eight were asked questions orally and their verbal responses were recorded. Children ages 9 and older completed the survey independently.



Q1: How old are you?		
Responses	Number	Percent
age 5-8	23	49%
ages 9-12	12	25.5%
ages 12-18	12	25.5%

Q2: What do you like about the parks on the reservation?	Number	Percent
Swings	14	30%
It is fun	7	15%
Toys	6	13%
Slides	4	9%

Kids like swings the best but would like to see more monkey bars added to parks.

Q3: What would you change about the parks?	Number	Percent
Add Monkey Bars	7	15%
Add more swings	4	9%
Nothing	3	6%
Make them bigger	3	6%
Add a slide	2	4%
More for older kids	2	4%
The frog	2	4%
The seesaw	2	4%

There were numerous responses to the third survey question. Many of the changes suggested were only listed by one youth. These answers include:

- adding a water fountain
- adding more climbers
- adding more area to ride a bike
- adding a basketball hoop
- change the rope to something that will not give rope burn
- more sitting areas
- change the bark
- add a zip line
- add shaded benches
- add a batting cages
- add a sign that says no drugs or alcohol.
- add a security guard



Q4: How do you get to the parks?	Number	Percent
Walk	33	70%
Someone drives me	23	49%
Bike	16	34%
Scooter	2	4%
Skate Board	1	2%

It is important to note that responses on this question overlap. For example, children who indicated they walk to the park may walk one day and bike another day. Most youth or 70% of participants walk to the park.

Most youth walk to existing parks.



Q5: What do you like to do at the park?	Number	Percent
Swing	14	30%
Play	11	23%
Spin	6	13%
Slide	6	13%
Hangout	2	4%
Rock climb	2	4%
Everything	2	4%

Some of the youth answered question number 4 with unique answers that only occurred once. These responses were:

- Play in the bark
- Play on the tree
- Big toy
- Play catch
- Play baseball
- Watch baseball

Q6: What sports do you like to play?	Number	Percent
Baseball	35	74%
Basketball	35	74%
Volleyball	23	49%
Softball	21	45%
Football	18	38%
Soccer	18	38%

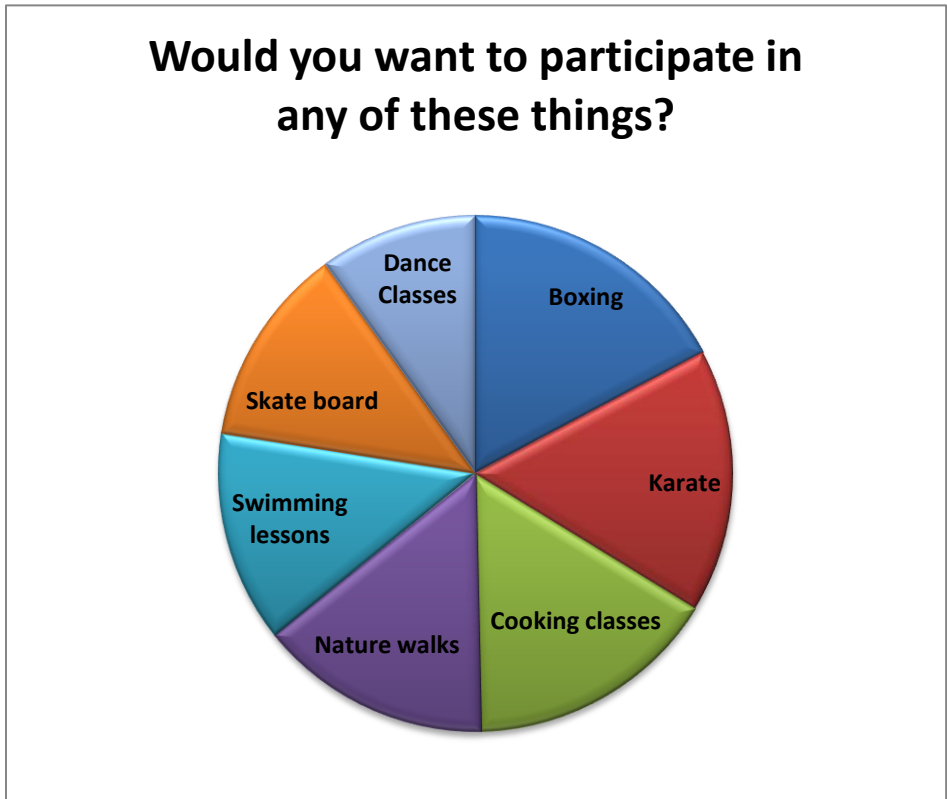
There was also an option to write in an additional sport other than those listed. Respondents wrote in the following sports:

- Tennis
- Kickball
- Tetherball
- Hockey
- Dodge ball
- Cross country
- Paintballing



Q7: Would you want to do any of these things?	Number	Percent
Boxing	26	55%
Karate	25	53%
Cooking classes	24	51%
Nature walks	22	47%
Swimming lessons	20	43%
Skate board	19	40%
Dance Classes	15	32%

In question number seven survey participants were asked if they would like to participate in a list of activities. The activity most youth indicated they would like to participate in was boxing with 55% of respondents choosing this activity. The next activity youth selected was karate with 53% of youth indicating they would like to participate, followed by cooking classes with 51% selecting this option. Forty-seven percent of youth reported they would like to participate in nature walks and 43% state they would like to participate in swimming lessons. Of the youth surveyed, forty percent indicate they would like to participate in skate boarding and only 32% would like to participate in dance classes.



Similar to question number 6, youth had the option to write in a response other than those listed in the question. Responses written in to question 7 include:

- Gymnastics
- Batting cages
- Self defense
- Paint balling

Batting cages are what youth would like to see added on the reservation. A skate park is the item kids would like least.

Q8: What do you want to see added on the reservation?	Number	Percent
Batting cages	35	74%
New Park	32	68%
Outdoor basketball court	26	55%
Bike Paths	26	55%
Dog Park	24	51%
Walking trails	21	45%
Skateboard Park	18	38%

What do you want to see added on the reservation?



The majority of youth, 74% of those surveyed, when asked what you want to see added on the reservation selected batting cages. Sixty-eight percent of youth said they would like to see a new park added. The next facilities youth would like to see are an outdoor basketball court and a bike path with 55% of youth choosing either option. Fifty one percent of youth indicate they would like to see a dog park added. Forty-five percent of youth would like to see walking trails added and only 38% of youth

according to survey results would like to see a skateboard park added to the reservation.

Survey participants indicated they would like to see additions other than those options listed in the survey. These other options were:

- More parks
- Karate
- Add more toys by the community center
- Animal park
- Gymnastic mats
- Water park
- Improve softball fields
- Zip line



Adult Survey Analysis



A community meeting was advertised in the tribal newsletter, on the community reader board, bulletin boards and through the Tribal Administration’s e-mail system. In August of 2013 a community meeting was held at the Chehalis Tribal Community Center. More than 50 community members attended the event. Locations were discussed for three potential park projects including one trail, one off-road vehicle park and one neighborhood playground. Attendees used sticker dots to indicate what locations the community supported for future development. The results of the sticker dot survey narrowed down potential trail options, off-road vehicle park locations and neighborhood park locations.

At the meeting survey results from the youth survey were discussed and adults were given a survey to provide input on future park and recreation development. Sixteen members of the community indicated they would be interested in serving on a Park Planning Team.

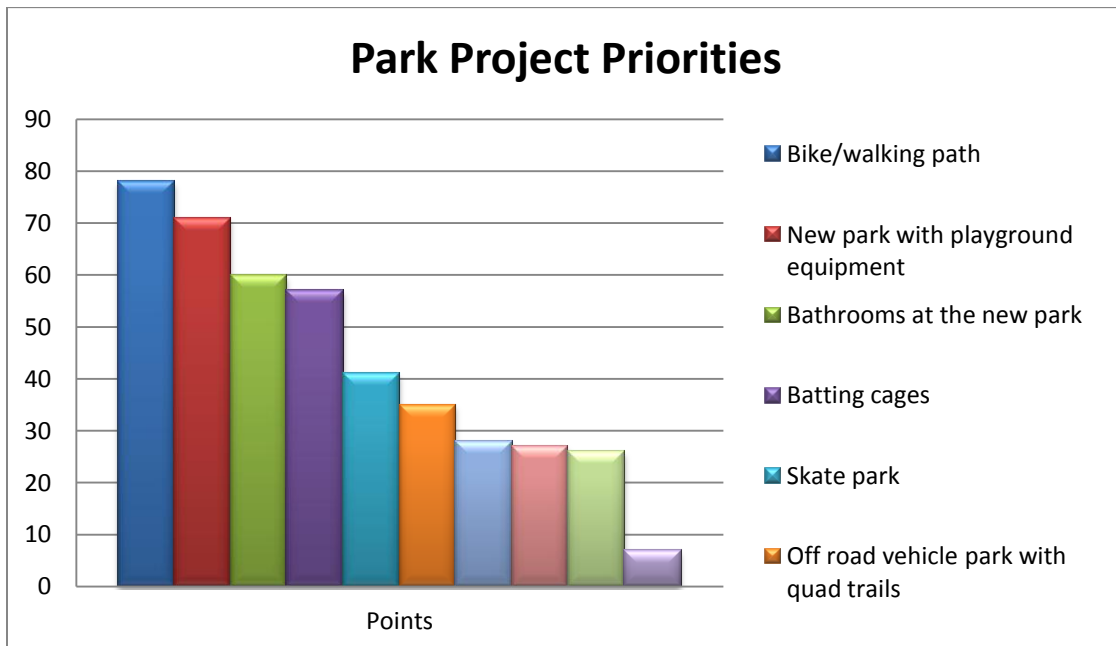
Thirty-three adults completed the 12 question adult survey.

Q1: Please rank your top five priorities (1-5) for park projects with 1 being most important to you and 5 being less important:	Points
Bike/walking path	78
New park with playground equipment	71
Bathrooms at the new park	60
Batting cages	57
Skate park	41
Off road vehicle park with quad trails	35
Improve Tomahawk Stadium	28
Outdoor basketball Court	27
Boat ramp	26
Off leash dog park	7

To evaluate responses to question number one, points were assigned to the rank assigned by survey participants. Priorities ranked as a 1st were awarded 5 points, items ranked 2nd were awarded 4 points, items ranked 3rd were awarded 3 points, items ranked 4th were awarded four points and items ranked 5th were awarded 1 point.



The highest ranked park project for adults with 78 points was a bike and walking path. The second ranked project with 71 points was a new park with new playground equipment. Bathrooms at the new park ranked 3rd priority with 60 points. Batting cages were 4th priority with 57 points. The project ranked 5th was batting cages which received 41 points. Improve Tomahawk Stadium ranked 6th with 28 points. The 7th priority park project was an outdoor basketball court with 27 points. Adults scored the boat ramp as the 8th priority with 26 points. An off leash dog park scored last with only 7 points.



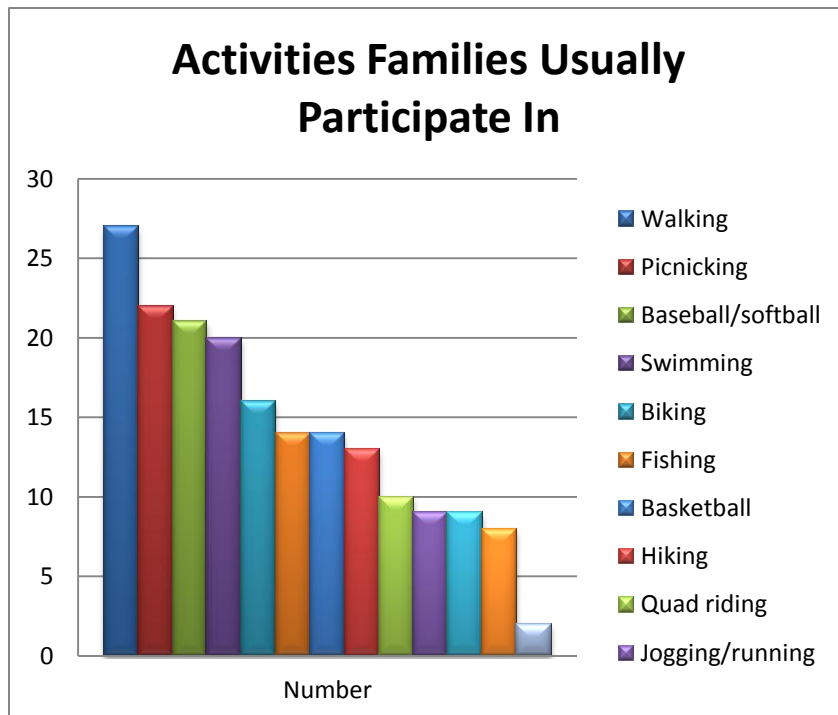
Other responses to question number 1 include:

- Paintball
- Disc golf
- An Olympic Sized Pool
- Bowling lanes
- Tennis courts
- Ping Pong
- Picnic tables
- Tables and warmers
- Garbage cans
- More parks in all areas

Q2: Please check the activities your family usually participates in	Responses	Percentage
Walking	27	82%
Picnicking	22	67%
Baseball/softball	21	64%
Swimming	20	61%
Biking	16	48%
Fishing	14	42%
Basketball	14	42%
Hiking	13	39%
Quad riding	10	30%
Jogging/running	9	27%
Hunting	9	27%
Football	8	24%
Soccer	2	6%

When comparing the tribal and state level survey data, there are several differences worth noting. First, in the tribal community the team sport with the largest percentage of participation is baseball and/or softball while in the state is swimming.

Swimming is the second ranked activity in the tribal community, while baseball is the second ranked activity in the state. On the reservation, 7 times more families or 64% of families participate in baseball while in the state only 9% do. The third ranked team sport on the reservation is basketball with 42% of families participating. At the state



level, basketball ranks second but only 16% of families participate. Soccer ranks third at the state level with 13% participation while in the tribal community soccer ranks last.

Survey participants wrote in additional responses to question number 2. These suggestions for activities include:

- Camping
- Disc golf
- Bowling lanes
- Canoe journey

Q3: Would you or anyone in your family participate in the following activities? Check all that apply and circle your favorite	Number	Percentage
Cooking classes	25	76%
Swimming lessons	22	67%
Open swim	16	48%
Martial arts	16	48%
Dance classes	16	48%
Quilting classes	11	33%
Zumba	9	27%
Boxing classes	5	15%

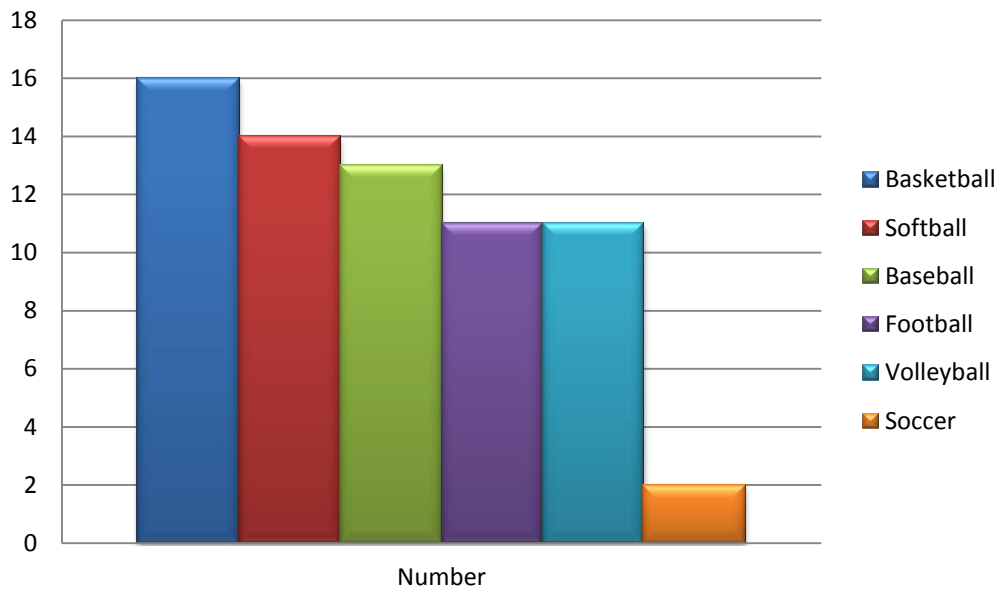
Suggestions written in on question number 3 for activities you or someone in your family would participate included:

- Fast pitch camps
- Basket weaving
- Cheerleading

Families would like to participate in cooking classes and swimming lessons more than any other activity.

Q4: If you, or anyone in your family would participate in an adult sports league please indicate which sports?	Number	Percent
Basketball	16	48%
Softball	14	42%
Baseball	13	39%
Football	11	33%
Volleyball	11	33%
Soccer	2	6%

Participation in Adult Sports Leagues



Additional responses listed under other for question 4 were:

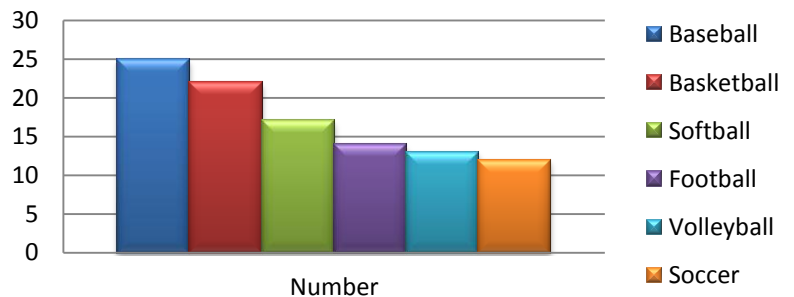
- Running
- Disc golf
- Bowling
- Baseball camp

Q5: If you, or anyone in your family would participate in a child sports league please indicate which sports?	Number	Percent
Baseball	25	76%
Basketball	22	67%
Softball	17	52%
Football	14	42%
Volleyball	13	39%
Soccer	12	36%

On question number 5 suggestions for child sports leagues included:

- Cheerleading
- Swimming competitions
- Bowling

Participation in Child's Sports Leagues



Q6: Do you use the parks on the reservation?	Number	Percent
Yes	28	85%
No	5	15%

The majority of survey participants use the parks on the reservation.

Q7: Do the existing parks and facilities meet the needs of all age groups?	Number	Percent
Yes	12	36%
No	16	48%

Survey participants were asked to indicate what could be improved at existing parks on the reservation if they felt the parks did not meet the needs of all age groups. Suggestions for improvements were:

- Needs more picnic areas
- Add barbeque grills
- More for children under 3
- Add drinking fountains
- Add water feature
- Add park in the Vosper and Tahown
- Needs restrooms
- Increase law enforcement presence
- Add a skate park
- Add bigger teeter totter
- Need more swings
- Change fall material to rubber mats
- Shooting range

Q8: Do you believe the parks are properly maintained?	Number	Percent
Yes	21	64%
No	7	21%

When asked if you believe the parks are properly maintained, 64% of adults said yes while 21% said no.

On question number 8 when asked if questions were properly maintained, respondents were given space to indicate what could be improved if they felt the facilities were not properly maintained. The responses were:

- Garbage needs to be picked up
- Needs bathrooms
- Needs to be open more
- Control ants at park on Makum
- Toys need to be cleaned



Q9: What would you like the new park across the street from the little store to be named?	Number	Percent
Heritage Park	15	45%
Makum Park	10	30%

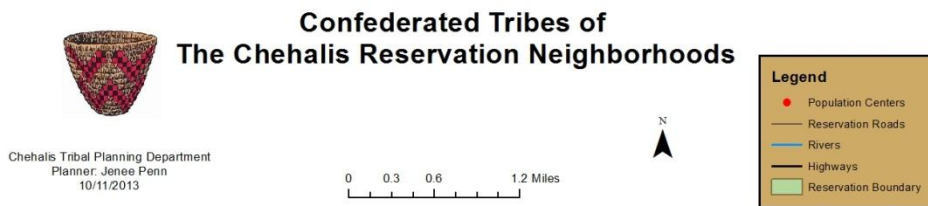
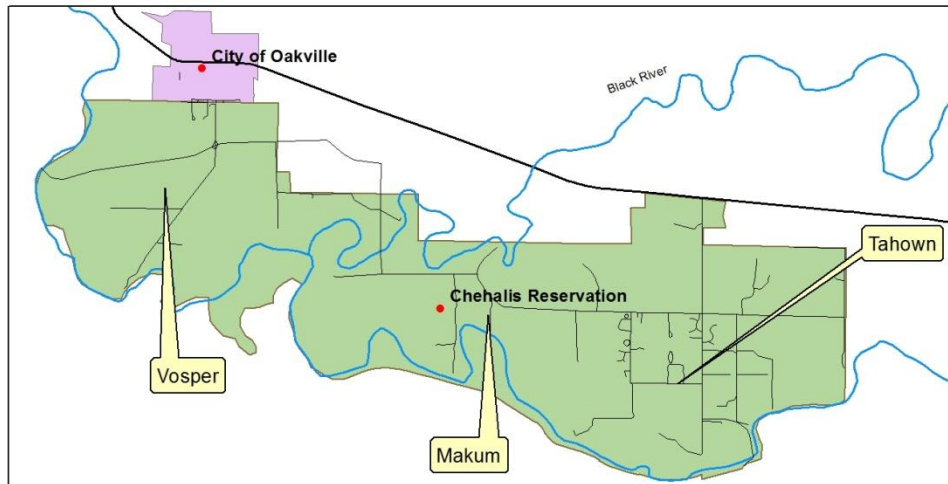
Only 75% of respondents answered question 9. Forty-five percent of respondents chose the name Heritage Park while 30% chose the name Makum Park.

A survey respondent also suggested the name “Per Capita Park”.

Survey participants were asked to list activities they participate in off the reservation on question number 10. These are the responses:

- Camping
- Roller skating
- Ice skating
- Go karts
- Coed softball
- Work out
- Shooting guns
- Fishing
- Swimming
- Hiking
- River rafting
- Frisbee golf
- Picnicking
- Quad riding
- Tubing
- Batting cages
- City league
- City league volleyball
- Bowling
- Walking
- Pow wows
- Canoe journey
- Baseball tourneys
- City league softball
- City league baseball
- marathons





Some of the responses on Questions 10 and 11 give references to neighborhoods on the reservation. The above map depicts the neighborhoods on the reservation.

Question 11 was an open ended question. When asked: “do you have any other ideas for recreation or comments on future park development?”, adults gave the following suggestions:

- Make them safe
- Keep them maintained
- Cut grass
- Clean up garbage
- Add a shooting range
- Make a family-oriented park with activities for babies
- Add bus stops in Vosper
- Make a disc golf course
- Add batting cages
- Hold pitching camps
- Add campgrounds
- Do not allow quads in parks
- Add a summer time water fountain like downtown Olympia
- Create a walking trail from the reservation to Oakville
- Have a bigger pool
- Add a basketball court in Tahown and Vosper
- Make a park by the Housing office
- Add a Native plant garden
- Create a shady place for hot weather
- Make walking trails with cultural education spots and tell past history
- Add a bike path
- Make a gold driving range
- Purchase baseball camp equipment
- Build a park on Tahown

Goals and Objectives

The Chehalis Tribe's Park Plan goals and objectives are based on an analysis of existing park and recreation space conditions, the results of community planning meetings, Park Planning Team Meetings and community surveys. The objectives for each specific facility were prioritized by the Park Planning Team.

The Goal of the Chehalis Tribe's Parks and Recreation Plan is to provide the opportunity for year-round recreational participation by all residents of the Chehalis Tribal community regardless of age, income, sex or physical ability.

The Goal of the Chehalis Tribe's Parks and Recreation Plan is to provide the opportunity for year-round recreational participation by all residents of the Chehalis Tribal community regardless of age, income, sex or physical ability.

Community Center

1. Provide sufficient indoor recreation opportunities to satisfy the recreational needs of the Chehalis Tribal Community by providing a wide range of quality recreational resources and opportunities.
2. Inform community members of recreational opportunities at the Community Center.



Playgrounds

1. Maintain adequate park acreage to meet the present and future needs of the tribal community.

Baseball Fields

1. Provide sufficient baseball facilities that are planned and designed to meet the needs and desires of all the residents in the tribal community.

Sidewalks/Walking Trails

1. Provide adequate pedestrian access from neighborhoods to areas of interest to residents of the Chehalis Reservation.

Recreational Programs

1. Establish and develop a varied year-round recreational program that will provide the opportunity for year-round recreational participation by all residents of the Chehalis Tribal community regardless of age, income, sex or physical ability.
2. Establish parks and recreation community partners.

Accessibility

1. Design outdoor picnic areas, fields, courts, playgrounds, trails, parking lots, restrooms and other active and supporting facilities to be accessible to individuals and organized groups of all physical capabilities, skill levels, age groups, income, and activity interest, especially at sites with significant interpretive opportunities.
2. Design indoor facility spaces, activity rooms, restrooms, hallways, parking lots, and other active and supporting spaces and improvements to be accessible to individuals and organized groups of all physical capabilities, skill levels, age groups, income, and activity interests.



Maintenance

1. Establish routine maintenance schedules.
2. Develop low maintenance and high capacity design standards to reduce overall facility maintenance.

Security and Safety

1. Implement the provisions and requirements of the Americans with Disabilities Act (ADA).
2. Define and enforce rules and regulations concerning park activities and operations that protect user groups, tribal staff and the public.
3. Where appropriate, develop adopt-a-park programs, neighborhood park watches, park police patrols, and other innovative programs that increase safety and security awareness and visibility.



Five Year Objectives

Five Year Objectives were established using the various forms of community input.

Priority	Objective	2014	2015	2016	2017	2018	2019	2020
1	Establish annual facility maintenance schedule	X	X	X	X	X	X	X
2	Build staff capacity of park and recreation program		X	X	X	X	X	X
3	Meet quarterly with parks and recreation advisory board	X	X	X	X	X	X	X
4	Provide annual parks and recreation program activity guide				X	X	X	X
5	Schedule indoor recreation opportunities at the Community Center				X	X	X	X
6	Schedule outdoor recreation opportunities				X	X	X	X

Short Term Objectives

Short Term Objectives for Tomahawk Stadium, Legends Field Complex, Makum Park and Community Center were established by the Park Planning Team. The highest priority items are ranked as number one. The list proceeds in descending order.

Tomahawk Stadium	Objective
1	Add lights to women's field
2	Add concession stand with bathrooms
3	Cover fence to block lights from cars
4	Add a sign for ball fields
5	Add an announcer's booth
6	Perform Maintenance



Legends Field Complex	Objective
1	Add baseball dirt
2	Add lighting
3	Add batting cages by playground
4	Enclose dugout
5	Add sidewalk to connect to Anderson Road
6	Add barbeque grills in picnic area
7	Finish the 3rd Field

Makum Park	Objective
1	Add covered picnic areas
2	Add Honey Buckets immediately
3	Add more picnic tables
4	Add drinking fountain
5	Add permanent bathroom structure
6	Add barbeque pits



Vosper Park	Objective
1	Add lights

Community Center	Objective
1	Hire a Trainer
2	Add wifi
3	Finish the fish pitt
4	Take rocks out and install concrete
5	Add picnic area
6	Add sauna

Potential Capital Projects

- ORV park
- Campground
- Walking trail/Bike Path
- Skate park
- Upgrade playground surfacing
- Install lights at recreational areas
- Spray Park
- Batting Cages
- Playground with Covered Area
- Nature trail



Priority	Project Name	2014	2015	2016	2017	2018	2019	2020	TOTAL
1	Outdoor playground and Covered Area	\$300,000							
2	Tahown Area Playground	\$200,000							\$200,000
3	Makum Area Playground and Outdoor Basketball Court	\$200,000							\$200,000
4	Install lights at all 5 Playgrounds	\$150,000							\$150,000
5	Acquisition of culturally significant recreation properties		\$250,000						\$250,000
6	Bike/Walking Path							\$750,000	\$750,000
7	Outdoor Bathrooms at 3 parks			\$100,000					\$100,000

Priority	Project Name	2014	2015	2016	2017	2018	2019	2020	TOTAL
8	Batting Cages			\$50,000					\$50,000
9	Tomahawk Stadium Improvements				\$100,000				\$100,000
10	Upgrade Playground Surfacing at all 5 Playgrounds				\$300,000				\$300,000
11	Skate Park				\$250,000				\$50,000
12	ORV Park					\$250,000			\$250,000
13	Legends Field Improvements						\$300,000		\$300,000
14	Nature Trail							\$600,000	\$600,000
14	Create Campground							\$200,000	\$200,000
	TOTAL	\$550,000	\$250,000	\$150,000	\$650,000	\$250,000	\$300,000	\$1,550,000	\$3,700,000



What Does This Tell Us?

1. The Chehalis Tribal Community is growing more rapidly than the state of Washington; therefore, the future design of park and recreation facilities and services need to be planned to meet this steadily growing population.
2. Most youth walk to existing parks; therefore, future parks should have pedestrian access via sidewalk or trails.
3. The neighborhoods on the eastern portion of the reservation have reached maximum residential capacity. Future housing development is limited to the western portion of the reservation. With housing development anticipated on this half of the reservation, recreational facilities need to be planned for future residents.
4. Facilities, amenities and programs that appeal to all age groups are important, but facilities for younger people are critically important since the tribal population is so young.

5. Residents of the Chehalis Reservation have a lower than average income profile for the state of Washington. This indicates that there is limited capacity for residents to pay for recreational activities that are important to families. Future planning considerations for park and recreational facilities or programs should keep activities free and open to the public whenever possible.
6. In the tribal community, walking, picnicking, baseball/softball and swimming are popular activities. The popularity of these activities with families needs to be taken into consideration in future planning efforts.