

CONNECT Advisor V8i

INSTALLATION AND ADMINISTRATION GUIDE

Bentley Systems Inc.

Contents

- What is CONNECT Advisor? 2
- Pre-requisites 2
- Supported OS 3
- Getting Started 3
- Installation Steps 4
- Uninstallation Steps 12
- Silent Installation and Uninstallation 14
- Working with CONNECT Advisor 14
- FAQ 16
- Supported Bentley Products 17
- Contact 18

What is CONNECT Advisor?

CONNECT Advisor is a desktop application which provides a unified interface for you to interact with various available Bentley content in one location, thereby eliminating the need to browse to various sources individually.

This feature in CONNECT Advisor boosts productivity as it reduces the time required to access and get the information.

Pre-requisites

CONNECT Advisor requires you to be a CONNECTED user. You should have an account at the <http://connect.bentley.com> portal and using that information, be able to login into the CONNECTION Client.

CONNECT Advisor provides personalized content; hence it is necessary that you have a valid CONNECT account.

As a result of the above requirement, latest CONNECTION Client needs to be installed on your desktop. If it is not available, then CONNECT Advisor will install one for you.

CONNECT Advisor works only with an installed Bentley Product. You need to have any one of the supported Bentley Products to access the features of the CONNECT Advisor

Please see below the list of [Supported Bentley Products](#).

Supported OS

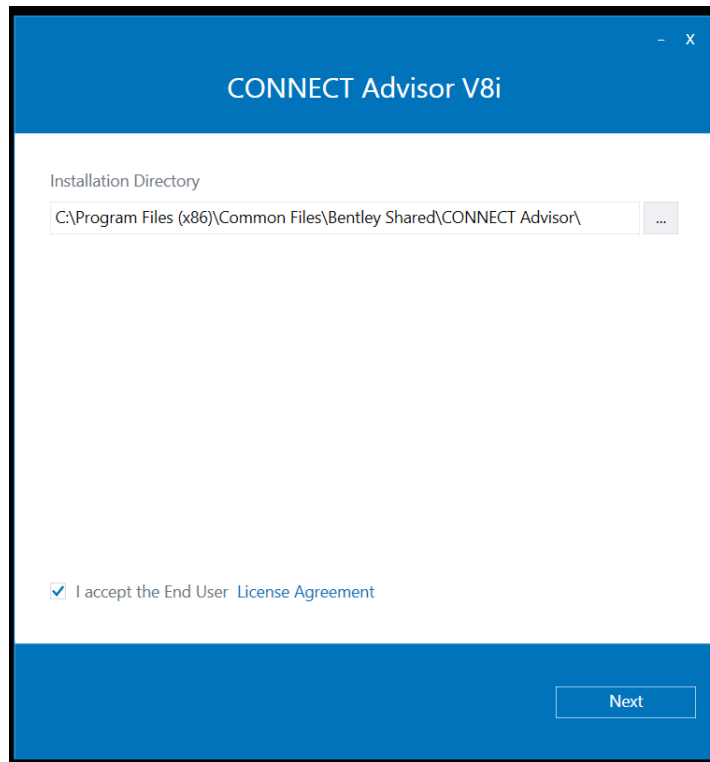
Operating Systems	32 bit	64 bit	Remarks
Win XP, Windows Vista and below	<input checked="" type="checkbox"/>	<input checked="" type="checkbox"/>	Not supported
Windows 7 SP1	<input checked="" type="checkbox"/>	<input checked="" type="checkbox"/>	Requires .NET Framework 4.6.1
Windows 8, 8.1	<input checked="" type="checkbox"/>	<input checked="" type="checkbox"/>	Requires .NET Framework 4.6.1
Windows 10	<input checked="" type="checkbox"/>	<input checked="" type="checkbox"/>	Requires .NET Framework 4.6.1

Getting Started

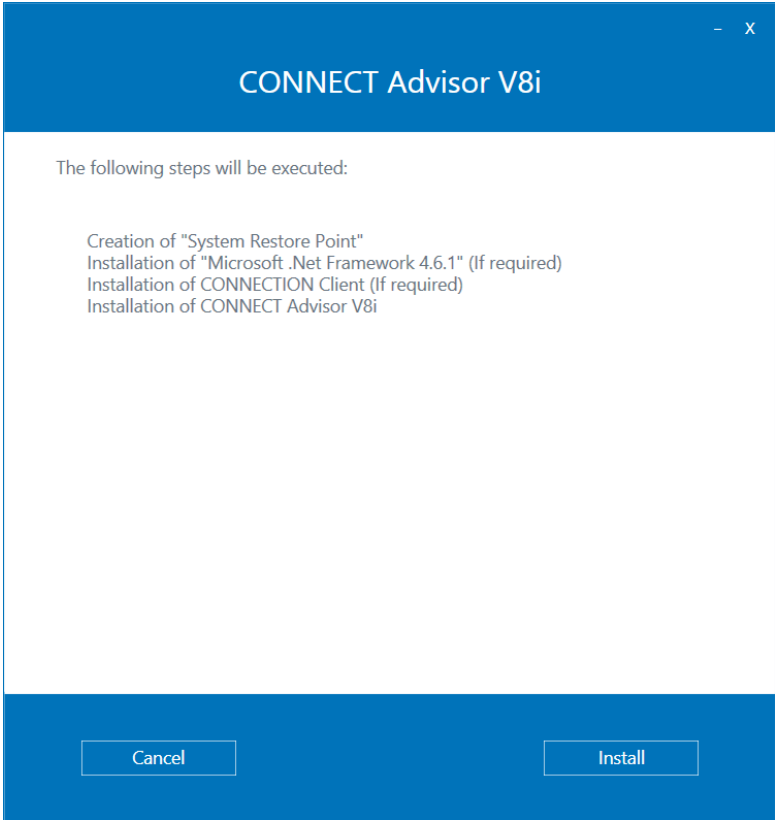
1. Latest Bentley CONNECT Advisor V8i can be found on the Bentley Downloads page (Fulfillment Center)
2. Go to the latest available build (e.g. 081109132en1 at the time of writing this document)
3. Run the setup.exe found in the products folder
4. Follow the [Installer using the steps](#) given
5. Default installation location is
 - o 32 bit – “C:\Program Files (x86)\Common Files\Bentley Shared\CONNECT Advisor”
6. CONNECT Advisor integrates with the all the supported application(s) installed on your machine.
7. On uninstalling CONNECT Advisor, the integration from all the products is automatically removed.
See [uninstallation steps](#)

Installation Steps

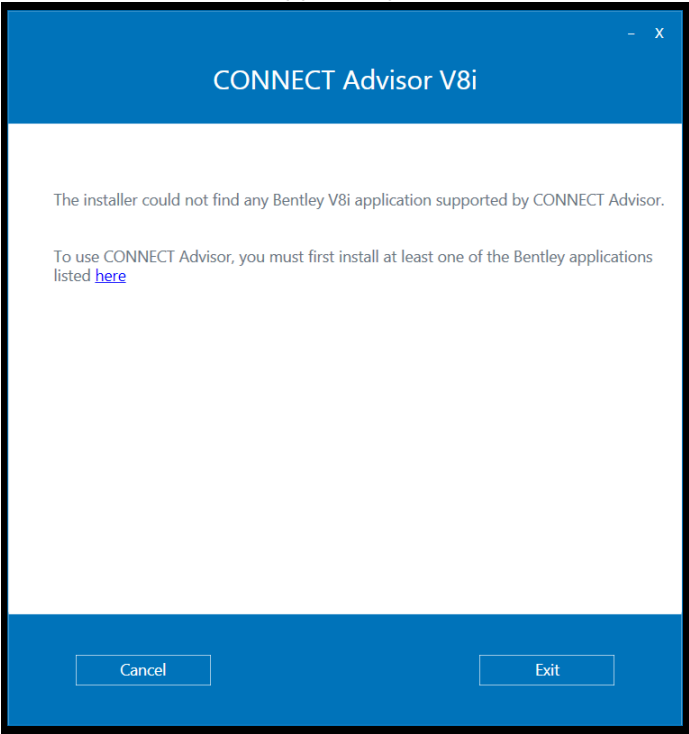
1. After launching the setup.exe, CONNECT Advisor V8i Installer starts with the initial screen, Accept the “End User Licensing Terms” and click **Next** to continue

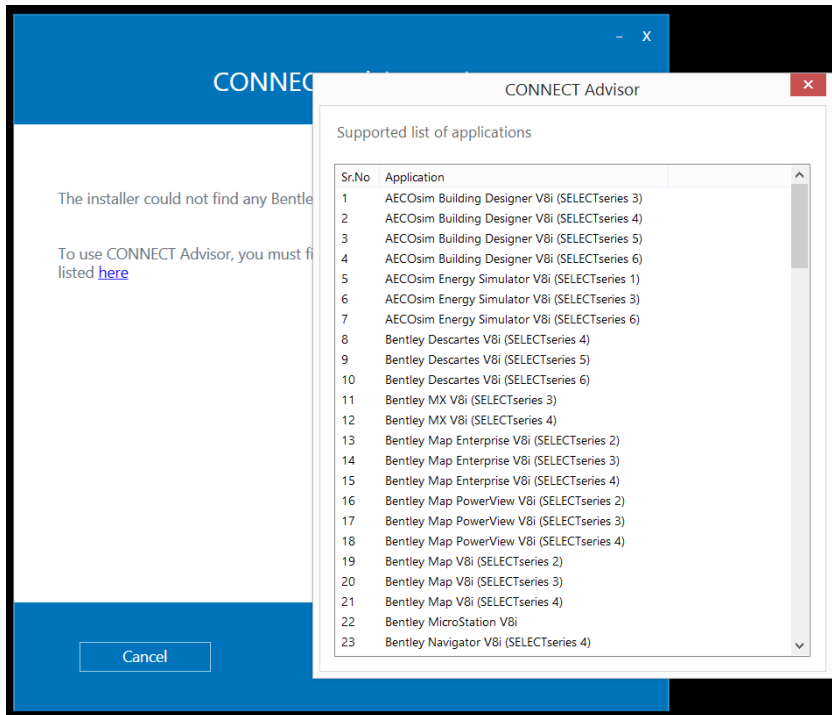


2. This screen lists out all the actions that will be executed, if you choose to install CONNECT Advisor V8i, click **Install** to continue

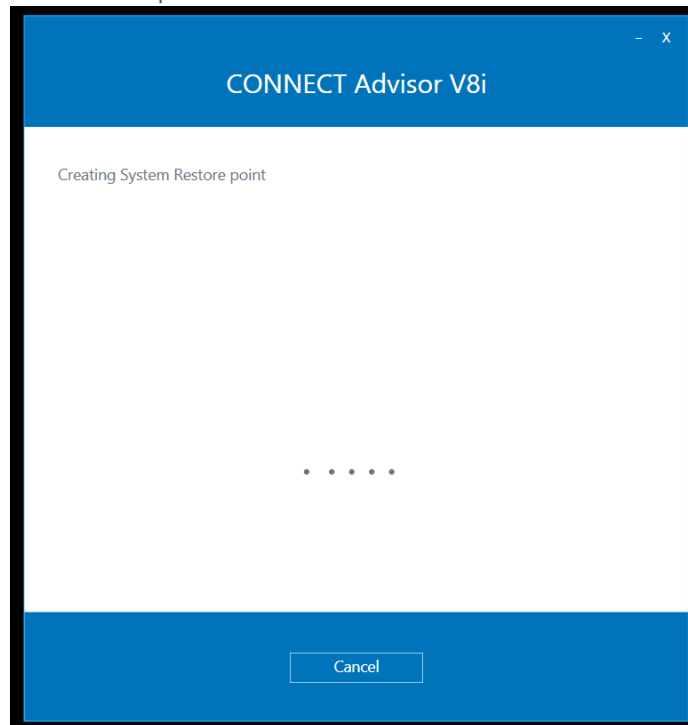


3. If the installer does not find any supported applications, then a warning message is shown to the user as given below and also lists out the supported products

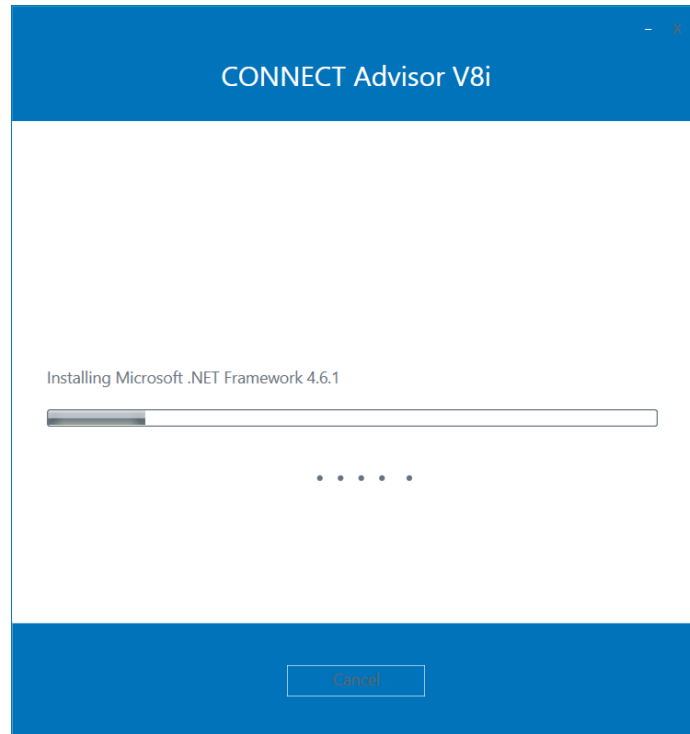




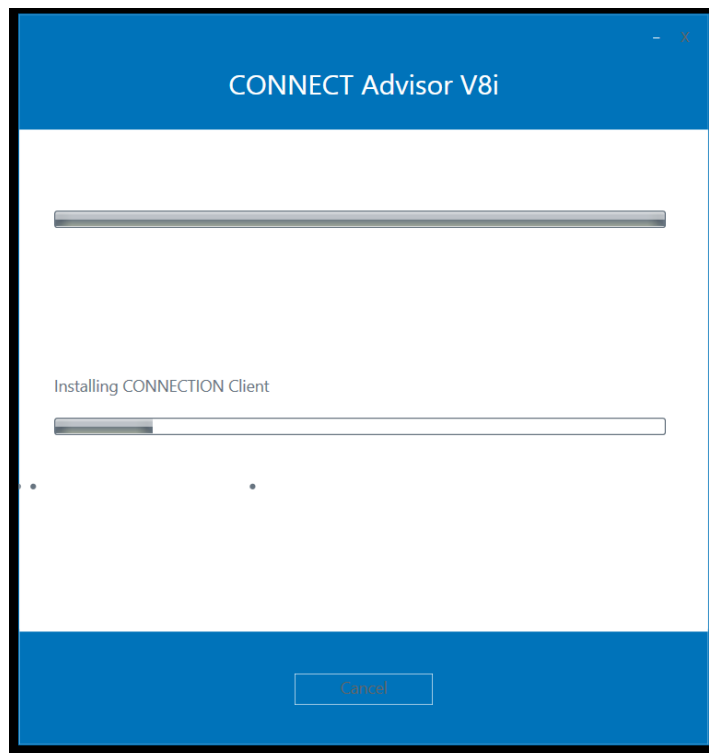
- If supported applications are found, Installer will proceed ahead and create a "System Restore Point" as a standard installation procedure.



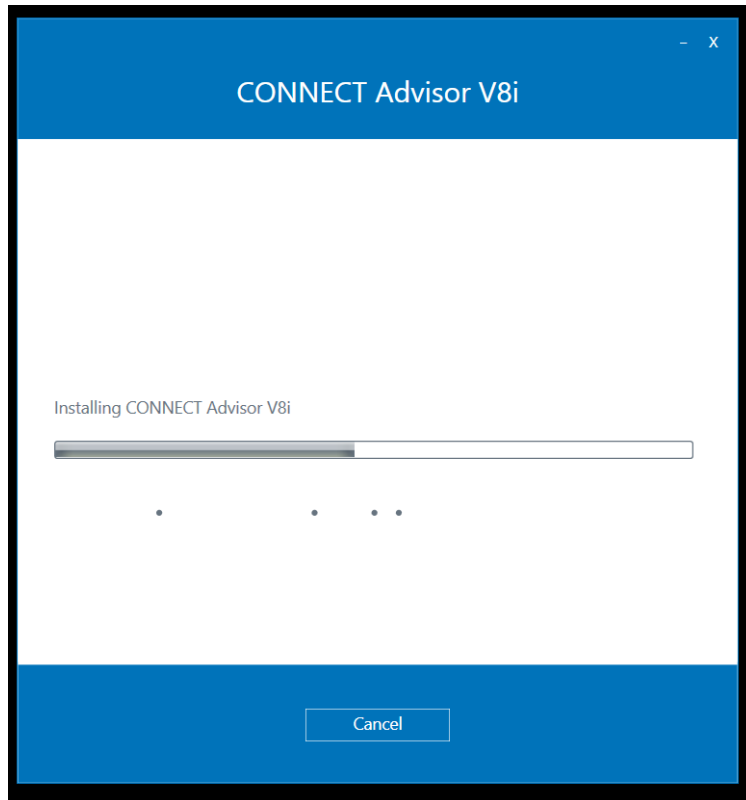
- If "Microsoft .NET Framework 4.6.1" is not available, the installer will install one for you



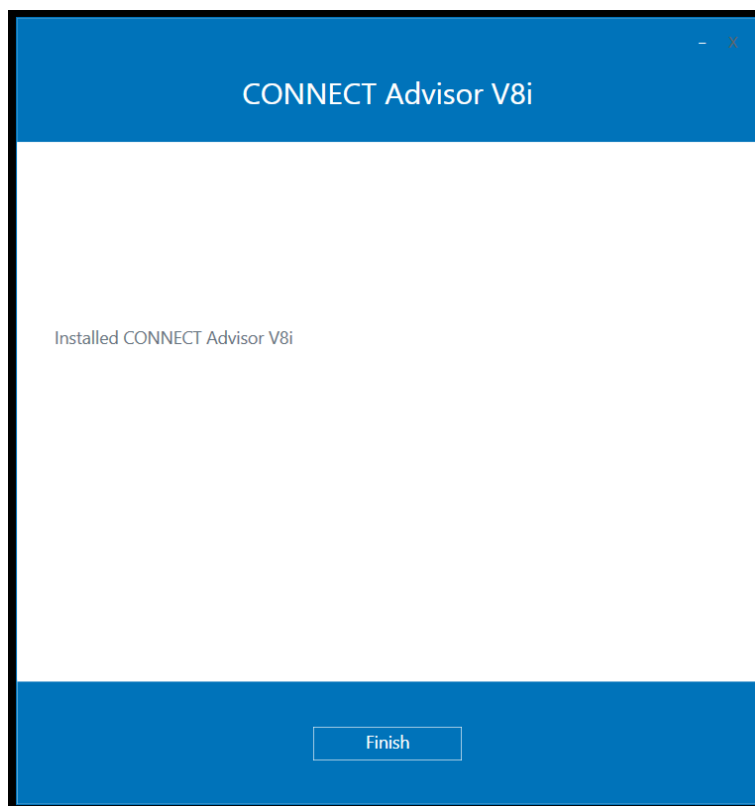
6. If "CONNECTION Client" is not already installed, the installer will install the latest released CONNECTION Client.



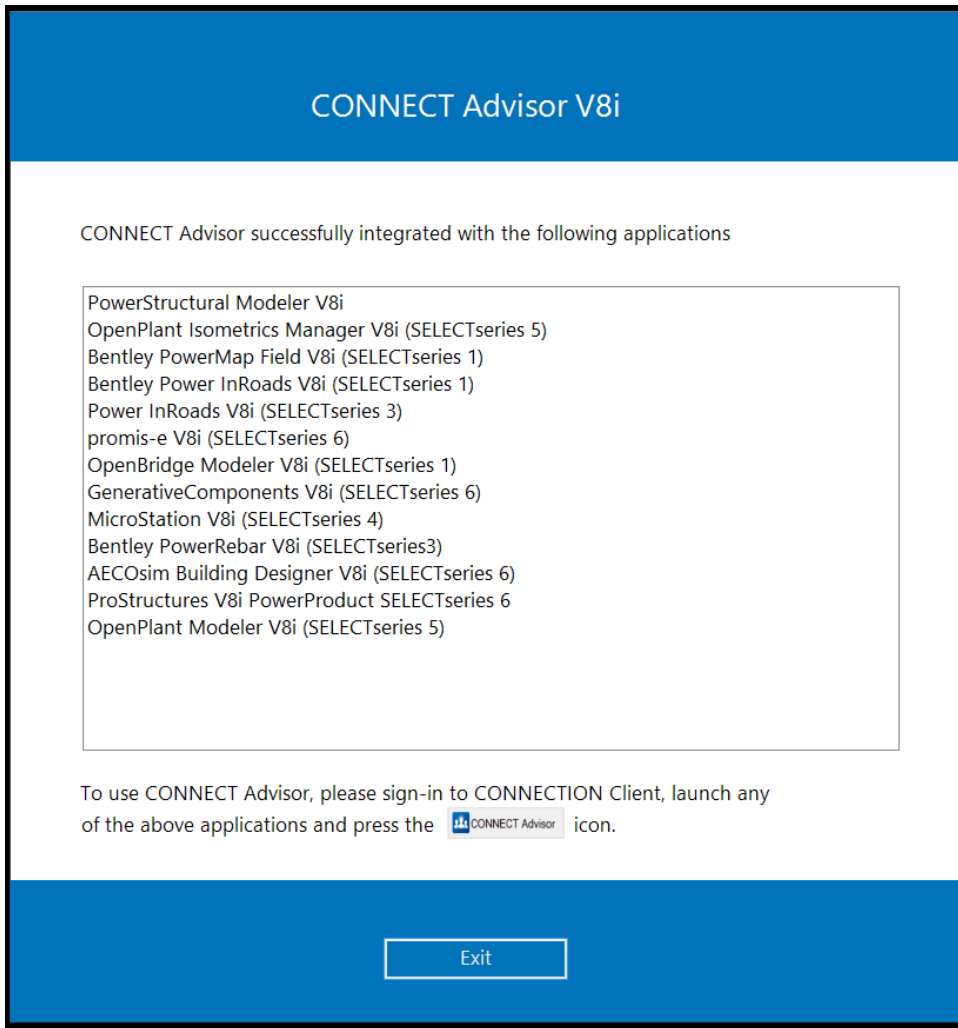
7. After all the above pre-requisites are installed, CONNECT Advisor installation will start



8. If the installation is successful, the final screen is shown as below, click **Finish** to complete the installation process



9. After the installation is complete, you can see the list of applications integrated with CONNECT Advisor



10. login into CONNECTION client and start using the CONNECT Advisor



Bentley®

Sign In

Access your Bentley Services

Email

Password

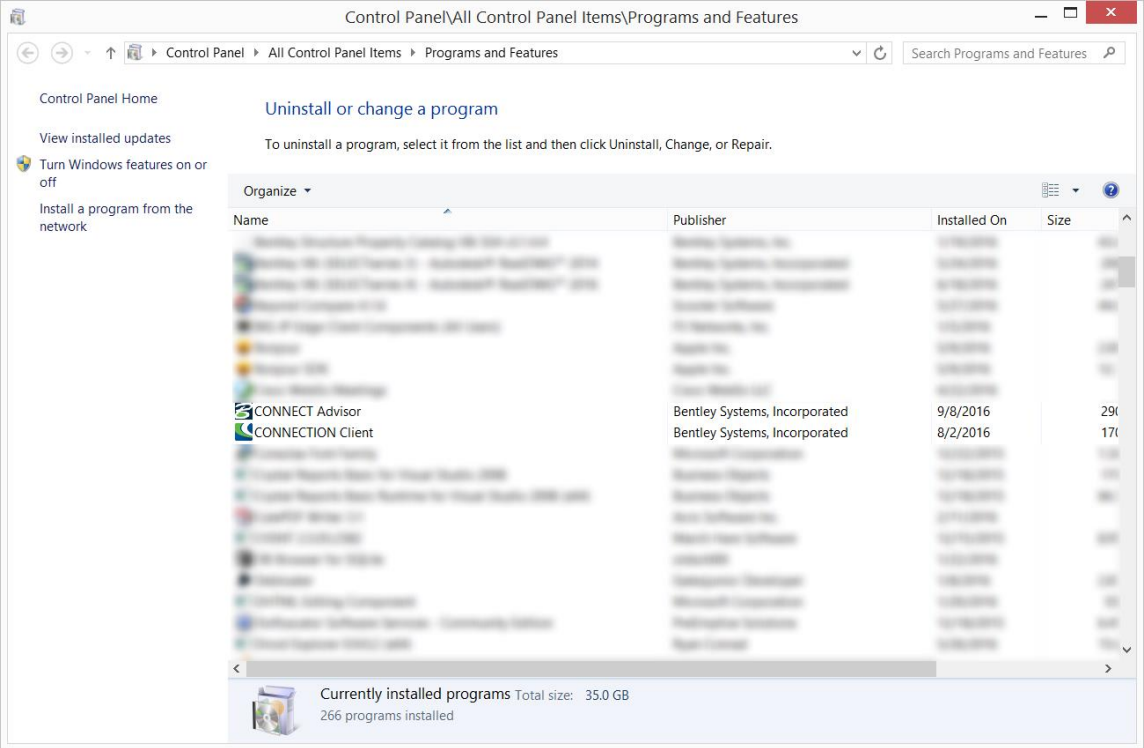


[Forgot password?](#)

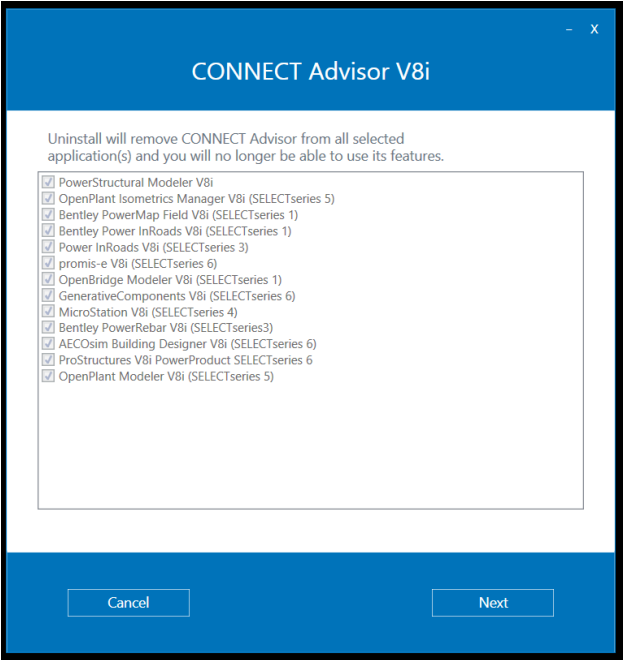
New User? Register Now

Uninstallation Steps

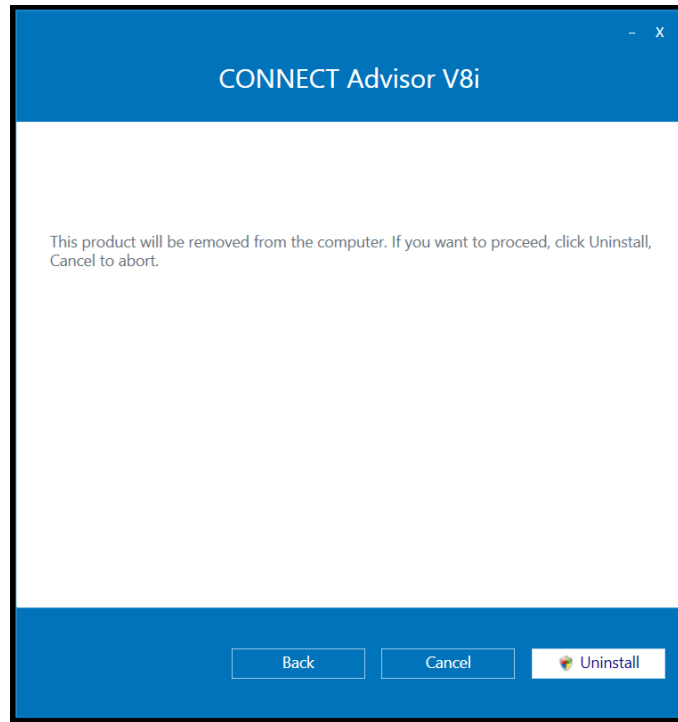
1. To Uninstall CONNECT Advisor follow the steps below, from the “Programs and Features” section of the Control Panel, select CONNECT Advisor and click “Uninstall”



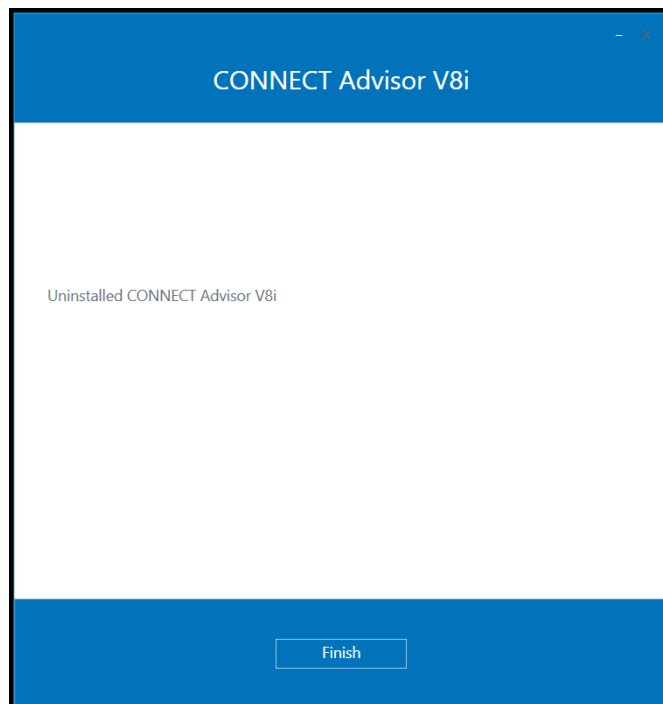
2. On Starting uninstall, the following screen will be shown, Click Next to Continue



3. A confirmation dialog will be shown, only after clicking "Uninstall", the actual uninstallation will start



4. Uninstallation of CONNECT Advisor will begin and complete.



Silent Installation and Uninstallation

We can also install and uninstall CONNECT Advisor silently using command prompt, Commands are as follows:

For Installation:

```
%nameofinstaller%.exe /s
```

For installation of specific products:

```
%nameofinstaller%.exe /s PRODUCTS=<Products Name>
```

E.g.

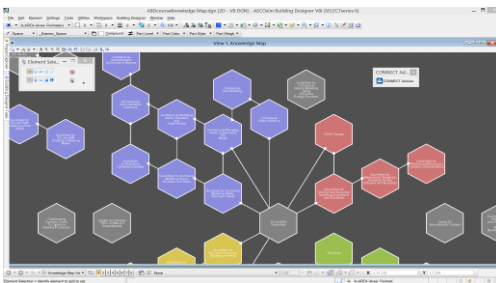
```
CONNECTAdvisorSetup.exe /s PRODUCTS="MicroStation V8i(SELECTseries 4);Power Rail Track V8i (SELECTseries4)"
```

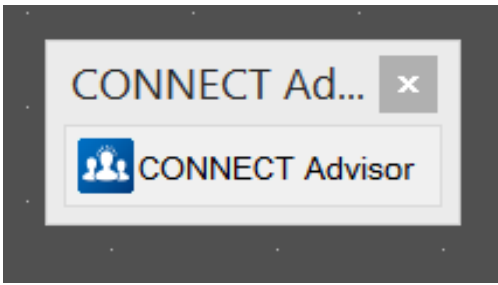
For Uninstallation:

```
%nameofinstaller%.exe /s -uninstall
```

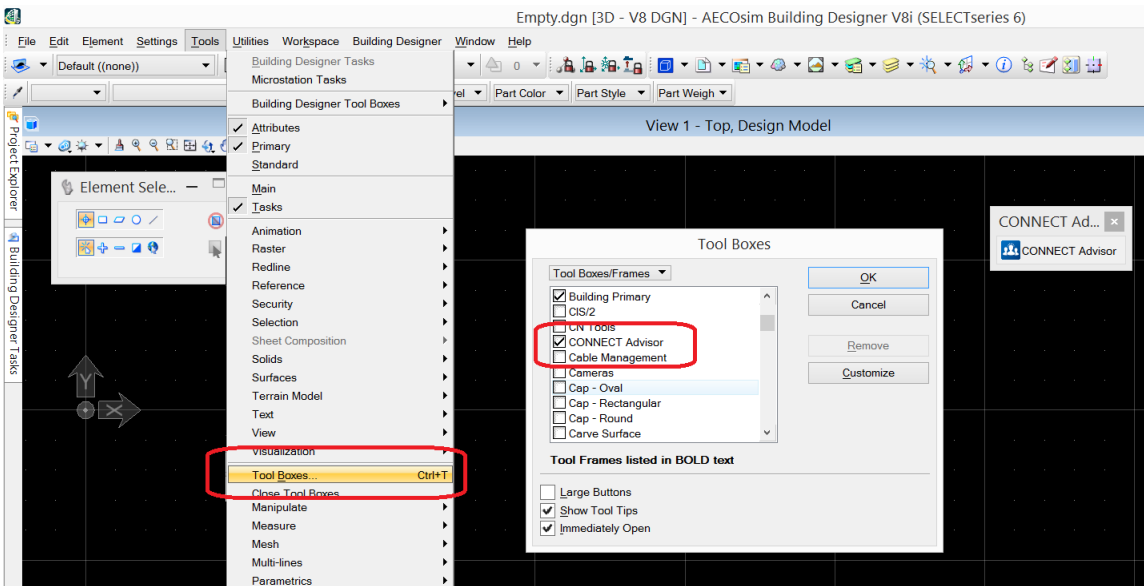
Working with CONNECT Advisor

1. When you launch the product that is integrated with CONNECT Advisor, CONNECT Advisor window will get AutoStart.
2. you will also see a toolbox as shown below





3. If the toolbox is not visible, it can be configured by the following method
 - o Press Ctrl+T to bring up the ToolBox Window
 - o OR Click on Tools->ToolBoxes to bring up the ToolBox Window



4. Scroll down the list of available ToolBoxes and make sure that the CONNECT Advisor toolbox is selected
5. You should now be able to Launch CONNECT Advisor, by clicking on the CONNECT Advisor icon as in step 1 above.

FAQ

1. Where can I download CONNECT Advisor from?

You can download CONNECT Advisor V8i from the Fulfillment Center. Please follow these steps to download:

1. Open the Fulfillment Center URL from [here](#)
2. Select "All Downloads"
3. Download the latest version by selecting the "Download" icon next to "Bentley CONNECT Advisor (English) 32-bit"

2. Does CONNECT Advisor update using CONNECTION Client?

Yes, if you have CONNECT Advisor V8i already installed on your computer, you can download and install CONNECT Advisor V8i from the CONNECTION Client. CONNECT Advisor V8i will replace any earlier versions of CONNECT Advisor V8i and update it to the latest version available. Sign into the CONNECTION Client to view and apply your Application updates.

3. What products, release labels and languages are supported by CONNECT Advisor in the initial release?

Most V8i Power Platform-based Bentley Applications are supported. For specific listing, please refer to [Supported Bentley Products](#) below.

4. How does CONNECT Advisor integrate into the Bentley Products?

CONNECT Advisor creates a config file and loads it on product startup.

This is achieved by adding CONNECTAdvisor.cfg file in the config/appl folder of the product installation.

5. I do not use the delivered config file, how can I integrate CONNECT Advisor into my Product?

Make sure, you have CONNECT Advisor installed and your product is in the supported Products list.

Close all running instances of your product.

Go to your product installation directory.

Go to the directory "config/appl" in your product installation directory.

Locate the config file "CONNECTAdvisor.cfg".

Open the config file in a text editor

You should see the following line in the .cfg file

```
_USTN_FIRSTDGNFILE > CONNECTAdvisor.dll
```

This would allow the product to load the CONNECT Advisor binaries on the startup.

For the CONNECT Advisor ToolBox to be visible, copy the delivered "CONNECTAdvisor.dgnlib" into the workspace folder where you have your existing dgnlibs. You can also review "[Working with CONNECT Advisor](#)" section above on how to enable CONNECT Advisor ToolBox.

All these files are delivered with CONNECT Advisor and are available in the mdlapps folder in your installation location.

6. What is the price of CONNECT Advisor?

CONNECT Advisor is currently complimentary to our users. Users can access content through CONNECT Advisor based on their specific Bentley entitlements.

7. [How will users get support for CONNECT Advisor?](#)

You can get support for CONNECT Advisor through our respective Technical Support teams.

8. [What new changes and features are available in this version of CONNECT Advisor?](#)

Refer to the Readme.txt file delivered with CONNECT Advisor. This file should be residing in the Documentation folder of the CONNECT Advisor install location.

Supported Bentley Products

The following Bentley Products are supported.

No	Product	Base	SS1	SS2	SS3	SS4	SS5	SS6	SS7	SS8	SS9
1	AECOsım Building Designer V8i				✓	✓	✓	✓			
2	AECOsım Energy Simulator V8i		✓		✓			✓			
3	Bentley Descartes V8i					✓	✓	✓			
4	Bentley Map Enterprise V8i			✓	✓	✓					
5	Bentley Map PowerView V8i			✓	✓	✓					
6	Bentley Map V8i			✓	✓	✓					
7	Bentley MicroStation V8i	✓	✓	✓	✓	✓					
8	Bentley MX V8i				✓	✓					
9	Bentley Navigator V8i		✓	✓		✓	✓	✓			
10	Bentley OpenPlant Modeler V8i			✓	✓		✓	✓			
11	Bentley OpenUtilities Designer V8i					✓					
12	Bentley OpenUtilities Map V8i					✓					
13	Bentley OpenUtilities PowerView V8i					✓					
14	Bentley Power GEOPAK V8i		✓	✓	✓	✓					
15	Bentley Power InRoads V8i		✓	✓	✓	✓					
16	Bentley PowerCivil for Denmark V8i			✓		✓					
17	Bentley PowerCivil for North America V8i		✓								
18	Bentley PowerCivil for Sweden V8i					✓					
19	Bentley PowerCivil for UK and Ireland V8i					✓					
20	Bentley PowerCivil V8i	✓	✓	✓							
21	Bentley PowerMap Field V8i		✓								
22	Bentley PowerMap V8i	✓	✓								
23	Bentley PowerRebar V8i				✓						

24	Bentley PowerSurvey V8i	✓	✓	✓	✓	✓						
25	Bentley Raceway and Cable Management V8i	✓	✓	✓								
26	Bentley Substation V8i				✓	✓	✓	✓	✓	✓		
27	Bentley topoGRAPH	✓										
28	Bentley topoGRAPH Projects	✓										
29	Bentley Utilities Designer V8i				✓							
30	Bentley View	✓	✓	✓	✓	✓						
31	Bentley(R) OpenPlant PowerPID V8i	✓	✓	✓	✓	✓	✓	✓				
32	ConstructSim V8i	✓	✓	✓	✓	✓	✓	✓				
33	GenerativeComponents V8i				✓			✓				
34	MicroStation PowerDraft V8i		✓	✓	✓	✓						
35	MineCycle Designer				✓							
36	MineCycle Material Handling V8i				✓							
37	MineCycle Survey V8i				✓	✓						
38	OpenBridge Modeler V8i	✓	✓	✓	✓							
39	OpenPlant Isometrics Manager V8i						✓	✓				
40	OpenPlant Orthographics Manager V8i							✓				
41	OpenPlant Support Engineering V8i						✓	✓				
42	Power Rail Overhead Line V8i		✓	✓								
43	Power Rail Track V8i			✓		✓						
44	PowerStructural Modeler V8i	✓										
45	promis-e V8i						✓	✓	✓	✓		
46	ProStructures V8i							✓	✓	✓		

Contact

For any issues and questions related to this document, please drop an email with your questions to the following

Product Manager Ashit Gandhi ashit.gandhi@bentley.com