

# Consumer Protection (Safety Requirements) Regulations

Information Booklet

© 2022 Enterprise Singapore

230 Victoria Street #09-00, Bugis Junction Office Tower, Singapore 188024

Hotline : 6898 1800  
Website : [www.consumerproductsafety.gov.sg](http://www.consumerproductsafety.gov.sg)

Published : 01 April 2002  
Updated : 13 July 2022

All rights reserved. No part of this publication may be reproduced, stored in a retrieval system, or transmitted in any form or by any means, electronic, mechanical, photocopying, recording or otherwise, without prior written permission of the publisher.

## **Table of Contents**

1.0	Preface .....	4
2.0	Introduction.....	5
3.0	Key Regulations .....	7
4.0	Controlled Goods and their Applicable Safety Standards and Requirements .....	8
4.1	Safety Standards and Requirements of Controlled Goods by Risk Level .....	9
4.2	Additional Requirements for registration of Controlled Goods.....	22
5.0	Registration .....	34
5.1	Parties that Need to Apply for Registration .....	34
5.2	Registration of Supplier of Controlled Goods.....	35
5.3	Registration of Controlled Goods .....	36
5.4	Certificate of Conformity.....	39
5.5	Modifications to Registered Controlled Goods.....	42
5.6.	Exemption of Controlled Goods from Registration.....	44
6.0	SAFETY Mark .....	45
7.0	Technical File .....	46
	Appendix A - Definitions.....	48
	Appendix B - Examples of Controlled Goods.....	50
	Appendix C - Examples of Non-Controlled Goods .....	53
	Appendix D – Certificate of Conformity .....	55
	Appendix E – Letter of Approval .....	56
	Appendix F - Guidelines for Using Safety Mark on Registered Controlled Goods .....	57
	Appendix G - Guidelines for Using Safety Mark in Advertisements or Publicity Materials .....	60
	Appendix H - Drawings Showing Acceptable and Not Acceptable Fan Motor Shaft for Decorative Ceiling Fan .....	62
	Appendix I - Diagram Showing the 3 Expansion Bolts, Safety Cord, Expansion Bolts with Hook and Mounting Plate of Ceiling Fan .....	63
	Appendix J - Installation Instructions for Fixing Gas Cooker Elbow Joint.....	64
	Appendix K - Examples of 2-Pin Mains Plug in Accordance To EN 50075 .....	65
	Appendix L - Examples of Non-Acceptable Mains Plugs.....	66
	Appendix M - Examples of 2-Pin And 3-Pin AC Adaptors .....	67
	Appendix N - Diagram Showing a Metal Ring Around Glass Bowl Used with Roaster .....	68
	Appendix O - Specifications of Gases Distributed in Singapore for Domestic Gas Appliances .....	69
	Appendix P - Controlled Goods Subject to Additional Requirements by Other Agency(ies) in Singapore .....	71
	Appendix Q - Summary of Updates .....	72

## 1.0 Preface

---

This information booklet serves as a guide to the definitions ([Appendix A](#)) and registration of Controlled Goods and other requirements related to the **Consumer Protection (Safety Requirements) Regulations (CPSR)**.

The Consumer Product Safety Office (CPSO) is an office overseen by Enterprise Singapore that is responsible for implementing the CPSR. The CPSO reserves the right to revise the booklet and introduce new safety standards or additional safety requirements as and when the need arises.

Users are advised to obtain the latest version of this booklet from the website [www.consumerproductsafety.gov.sg](http://www.consumerproductsafety.gov.sg).

We appreciate any feedback so that improvements to this booklet could be made. Please send your feedback to:

Enterprise Singapore  
Consumer Product Safety Office  
230 Victoria Street #09-00  
Bugis Junction Office Tower  
Singapore 188024

Hotline : 6898 1800  
Email : [consumerproductsafety@enterprisesg.gov.sg](mailto:consumerproductsafety@enterprisesg.gov.sg)  
Website : [www.consumerproductsafety.gov.sg](http://www.consumerproductsafety.gov.sg)

## **2.0 Introduction**

---

The objective of the **Consumer Protection (Safety Requirements) Regulations or CPSR** is to safeguard consumers' interest by ensuring household products, designated as Controlled Goods, meet the specified safety standards.

Undoubtedly, consumers today are prepared to pay for products that are safe and of high quality. The development of the CPSR is therefore consistent with the growing sophistication of consumers in Singapore.

The CPSO is an office overseen by Enterprise Singapore that is responsible for the implementation of the CPSR. One of the roles of the CPSO is to ensure compliance by the industry on the registration of thirty-three (33) categories of Controlled Goods. The definitions and applicable safety standards of the Controlled Goods are provided in Chapter 4 of this information booklet. Some examples of Controlled and Non-Controlled Goods are identified in Appendices B and C respectively.

Suppliers of Controlled Goods for consumers in Singapore must first be registered with the CPSO as **Registered Suppliers** (Chapter 5.2). Registered Suppliers are required to register each model of Controlled Goods with the CPSO. Registrations of Controlled Goods must be supported with either:

1. **Certificate of Conformity (CoC)** issued by designated third party **Conformity Assessment Bodies (CABs)** in Singapore or in Singapore's **Mutual Recognition Agreement (MRA)** partners, i.e., CABs (Certification/Testing), or
2. **Supplier's Declaration of Conformity (SDoC)** declared by Registered Suppliers.

Once the model has been registered with the CPSO, the Controlled Goods can then be advertised for supply and/or supplied in Singapore.

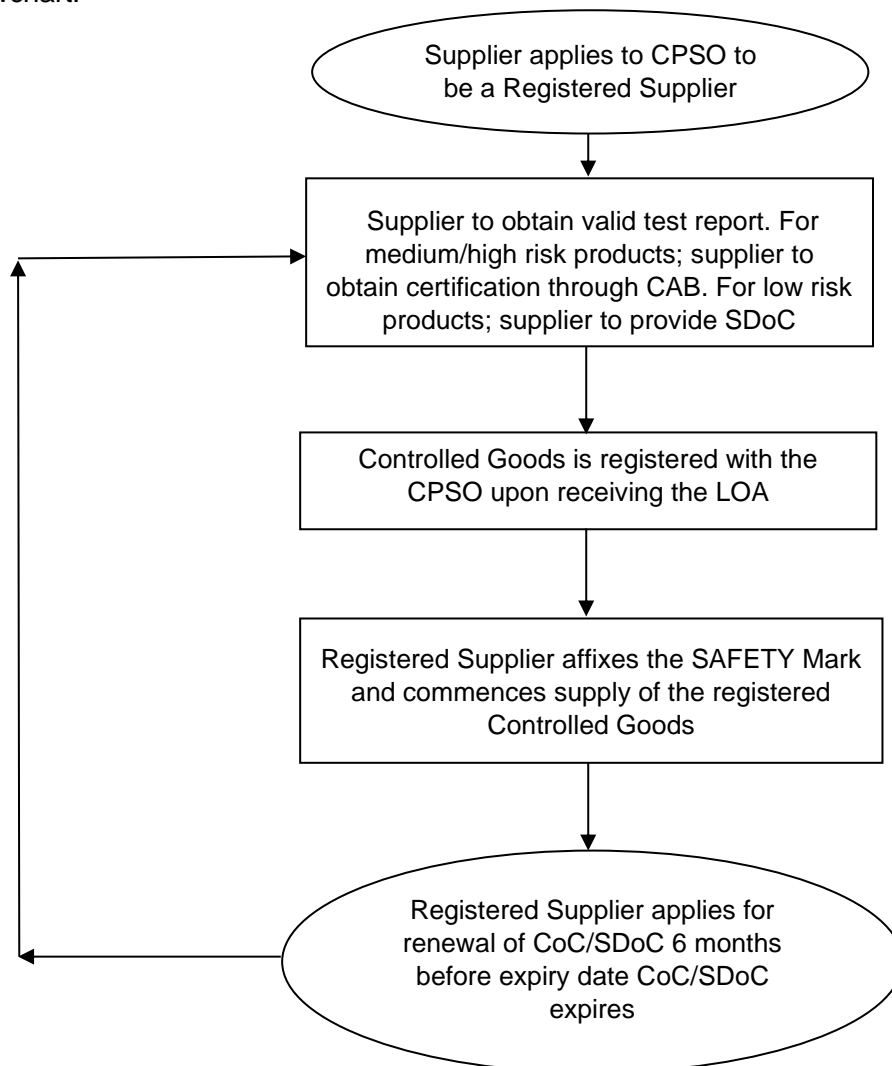
We would like to draw your attention to **Regulation 4(1)** of the Regulations, where it is stipulated that no person shall trade, supply or advertise for the purpose of supplying any of the Controlled Goods in Singapore after the specified dates, unless the Controlled Goods are registered with the CPSO and are affixed with the **SAFETY Mark**. Hence, merely labelling products or stamping receipts 'For Export Only' is not an excuse for not registering Controlled Goods. **A person guilty of an offence under Regulation 4, shall be liable on conviction, to a fine not exceeding \$10,000/- or to imprisonment for a term not exceeding two years or to both.**

## CONSUMER PRODUCT SAFETY OFFICE

About the SAFETY Mark: The SAFETY Mark comprises of a safety logo enclosed in a square on the left and the word “SAFETY MARK” enclosed in a rectangle on the right. Below the logo is a unique certification number traceable to the registrant. The colour used is Pantone 032C. Refer to Appendix F for Guidelines for Using Safety Mark on Registered Controlled Goods



An overview of the registration process for Controlled Goods is illustrated in the following flowchart:



### **3.0 Key Regulations**

---

As per Regulation 4(1) of the CPSR, all Controlled Goods supplied in Singapore, in the course of any trade or business, need to be –

- 1) Duly registered with the CPSO in accordance to the requirements specified.
- 2) Have the Safety Mark affixed to them in accordance to the characteristics and form stipulated by the CPSO

It is an offence to supply any Controlled Goods without meeting the listed requirements above. Any person found guilty of the offence shall be liable on conviction to a fine up to \$10,000 or to imprisonment for a term up to 2 years or both.

The CPSO may also, per Regulation 4(2) of the CPSR, require such person to –

- 1) Conduct a product recall of affected Controlled Good, and provide periodic updates on the progress.
- 2) Inform users of the affected Controlled Good on the potential dangers involved.

Any person who fails or neglects to effect a recall when required by the CPSO shall be guilty of an offence and liable on conviction to a fine up to \$2,000, or to imprisonment for a term up to 12 months or to both

As per Regulation 5(2) of the CPSR, any importer or manufacturer, in the course of any trade or business, who intends to supply, or advertise for supply Controlled Goods in Singapore shall apply to the CPSO –

- 1) To be registered as a Registered Supplier
- 2) To register any Controlled Goods which the importer or manufacturer intends to supply, or advertise for supply in Singapore

It is an offence to supply or advertise for supply any Controlled Goods without meeting the listed requirements above. An importer or manufacturer found guilty of the offence and shall be liable on conviction to a fine up to \$2,000 or to imprisonment for a term up to 12 months or to both.

## **4.0 Controlled Goods and their Applicable Safety Standards and Requirements**

Controlled Goods are required to be tested to the minimum edition of the safety standards stated in this chapter. In addition to the specified safety standards, Controlled Goods are required to fulfil the CPSO's requirements. A compilation of the safety standards and the CPSO's requirements each Controlled Good is required to fulfil is tabled in Chapter 4.1.

The CPSO categorises the Controlled Goods into three risk levels - Low, Medium, and High. The table below shows the conformity assessment approach adopted for each of the three risk levels.

<b>Risk Level</b>	<b>Conformity Assessment Approach</b>
Low	Type testing <sup>1</sup> + Supplier's Declaration of Conformity (SDoC)
Medium	Type testing + Certificate of Conformity (CoC)
High	Type testing + CoC + high risk requirement for renewal (in <a href="#">Chapter 4.2</a> )

Note:

- (1) Type testing is testing carried out by recognised testing laboratories to determine whether a product complies with the specified safety standard.

The **test report** including its test certificate (if applicable) must be provided for all Controlled Goods. A test report dated more than three (3) years shall be rejected.

For **Controlled Goods incorporated with additional functions**:

- a) The additional function must be tested to its applicable safety standard.
- b) If a product has both functions of a Controlled Good and Non-Controlled Good, the product should be classified a Controlled Good as a whole. The fact that it may have other functions that do not fall within the 33 categories is irrelevant. However, if the product with 'controlled' and 'non-controlled' functions are capable of being entirely and physically separated, such that it can be treated and sold as two separate and distinct products, then the registration can apply to only the 'controlled' product, and not the 'non-controlled' product.



#### 4.1 Safety Standards and Requirements of Controlled Goods by Risk Level

##### Controlled Goods by Risk Level

Low	<ul style="list-style-type: none"> <li>• <u>Air cooler</u></li> <li>• <u>Fuse (<math>\leq 13</math> amperes) for use in a plug</u></li> <li>• <u>Room air-conditioner</u></li> <li>• <u>Table lamp/Standing lamp</u></li> </ul>
Medium	<ul style="list-style-type: none"> <li>• <u>AC adaptors</u></li> <li>• <u>Audio and video products</u></li> <li>• <u>Coffee maker, slow cooker, steamboat and similar appliances</u></li> <li>• <u>Decorative lighting chain</u></li> <li>• <u>Fans</u></li> <li>• <u>Gas canister</u></li> <li>• <u>Hair care appliances</u></li> <li>• <u>Home computer system (inclusive of monitor, printer, speaker, and other mains operated accessories)</u></li> <li>• <u>Iron</u></li> <li>• <u>Isolating transformer for downlight fitting</u></li> <li>• <u>Kitchen machines</u></li> <li>• <u>Lamp control gears</u></li> <li>• <u>Liquid heating appliance</u></li> <li>• <u>Microwave oven</u></li> <li>• <u>Multi-way adaptor</u></li> <li>• <u>Portable socket-outlet</u></li> <li>• <u>Residual Current Circuit Breaker (RCCB)</u></li> <li>• <u>Rice cooker</u></li> <li>• <u>Stationary cooking appliances</u></li> <li>• <u>Toaster, grill, roaster, hot plate, deep fryer, wok, and similar appliances</u></li> <li>• <u>Vacuum cleaner</u></li> <li>• <u>Washing machine</u></li> <li>• <u>3-pin mains plug</u></li> </ul>
High	<ul style="list-style-type: none"> <li>• <u>Components of Liquefied Petroleum Gas system</u></li> <li>• <u>Domestic electric wall switch</u></li> <li>• <u>Gas cooking appliances</u></li> <li>• <u>Mains socket-outlets</u></li> <li>• <u>Refrigerators</u></li> <li>• <u>Water heaters</u></li> </ul>

**Low Risk Controlled Goods**

Controlled Good and Definition	Minimum Editions of Safety Standard(s) and Additional Requirements
<b>Air cooler</b> Air coolers, which are electrical appliances intended for household use to agitate the air and equipped to use water as a cooling medium, with rated voltage of not more than 250 VAC.	IEC 60335-2-98:2002  <u>Additional requirements for electrical products</u>
<b>Fuse (≤13 amperes) for use in a plug</b> Fuses (13-amp or less) for use in a 13-amp plug, which are devices that, by the fusion of one or more of their specially designed and proportioned components, open the circuit in which they are inserted and break the current when it exceeds a given value for a sufficient time.	SS 167:1977  <u>Additional requirements for electrical products</u>
<b>Room air-conditioner</b> Room air-conditioners, which are electrical appliances intended for household use and designed as self-contained units for mounting on a window or through a wall to provide conditioned air to an enclosed area, with rated voltage of not more than 250 VAC.	IEC 60335-2-40:2002  <u>Additional requirements for electrical products</u>
<b>Table lamp/Standing lamp</b> An electrical portable general-purpose luminaire intended for household use with supply voltage of not more than 250 VAC.	IEC 60598-2-4:2017  <u>Additional requirements for electrical products</u> <u>Additional requirements for table lamp/standing lamp</u>

**Medium Risk Controlled Goods**

Controlled Good and Definition	Minimum Editions of Safety Standard(s) and Additional Requirements	
	Current	From June 2024/2025 *
<p><b>AC Adaptor</b></p> <p>A device with rated voltage of not more than 250 VAC and designed to supply AC or DC power for applications such as computers, telecommunication equipment, home entertainment equipment or toys.</p>	<p><u>Applicable for electrical appliances</u></p> <p>IEC 61558-2-6:1997 or IEC 61558-2-16:2009</p>	
	<p>IEC 61558-2-6:2021 or IEC 61558-2-16:2021</p>	
	<p><u>Applicable for electronic appliances</u></p> <p>IEC 60065:2001 or IEC 62368-1:2014</p>	
	<p>IEC 60065:2014 or IEC 62368-1:2018</p>	
	<p><u>Applicable for computer / telephonic appliances</u></p> <p>IEC 62368-1:2014 or IEC 60950-1:2001</p>	
	<p>IEC 62368-1:2018 or IEC 60950-1:2005 + A1:2009 + A2:2013</p>	
	<p><u>Applicable for shavers</u></p> <p>IEC 60335-2-8:2002</p>	
	<p>IEC 60335-2-8:2012 + A1:2015 + A2:2018</p>	
	<p><u>Applicable for battery chargers</u></p> <p>IEC 60335-2-29:2002 + A1:2004</p>	
	<p>IEC 60335-2-29:2016 + A1:2019</p>	
	<p><u>Applicable for LED lightings</u></p> <p>IEC 61347-2-13:2006</p>	
	<p>IEC 61347-2-13:2014 + A1:2016</p>	
	<p><u>Applicable for table/standing lamps</u></p> <p>IEC 60598-2-4:2017</p>	
	<p><u>Applicable for breast pump</u></p> <p>IEC 60601-1:2005</p>	
	<p>IEC 60601-1:2005 + A1:2012 + A2:2020</p>	
	<p><u>Additional requirements for electrical products</u></p> <p><u>Additional requirements for AC adaptors</u></p>	

\* Effective from 1st June 2024 (for new registration) or 1st June 2025 (for renewal of registration)

Controlled Good and Definition	Minimum Editions of Safety Standard(s) and Additional Requirements	
	Current	From June 2024/2025 *
<b>Audio and video products</b>  Audio and video products, which are electronic devices for home entertainment designed to be fed from the supply mains and intended for reception, generation, recording or reproduction, respectively of audio, video and associated signals, with rated voltage of not more than 250 VAC.	IEC 60065:2001 or IEC 62368-1:2014	IEC 60065:2014 or IEC 62368-1:2018
	<u>Additional requirements for electrical products</u> <u>Additional requirements for plasma / LCD display monitor</u>	
<b>Coffee maker, slow cooker, steamboat and similar appliances</b>  Coffee makers, slow cookers, steamboats and similar appliances, which are electrical appliances intended for household use to heat liquids for the purpose of food or beverages preparation, with rated voltage of not more than 250 VAC.	IEC 60335-2-15:2002	IEC 60335-2-15:2012 + A1:2016 + A2:2018
	<u>Additional requirements for electrical products</u>	
<b>Decorative lighting chain</b>  Decorative lighting chains, which are electrical lightning chains intended for household use and fitted with a series or parallel or combination of series or parallel connected light emitting devices, with rated voltage of not more than 250 VAC.	<u>Rope lights</u> IEC 60598-2-21:2014	
	<u>Other decorative lighting chain</u> IEC 60598-2-20:2002      IEC 60598-2-20:2022	
	<u>Additional requirements for electrical products</u>	

\* Effective from 1st June 2024 (for new registration) or 1st June 2025 (for renewal of registration)

Controlled Good and Definition	Minimum Editions of Safety Standard(s) and Additional Requirements	
	Current	From June 2024/2025 *
<b>Fan</b> Fans, limited to ceiling, table, standing and wall fans, which are electrical appliances for circulating the air in its vicinity and intended for household use, with rated voltage of not more than 250 VAC.	<u>Table, standing or wall fan</u>	
	SS 655: 2020 or IEC 60335-2-80:2002	SS 655: 2020 or IEC 60335-2-80:2015
	<u>Ceiling or cycle fan</u>	
	IEC 60335-2-80:2002 + SS 655:2020 (Annex ZA only) or  SS 655:2020 or  IEC 60335-2-80:2002 + SS 360:1992 (sub-clauses 5.7 & 5.8 only) (for renewal only)	IEC 60335-2-80:2015 + SS 655:2020 (Annex ZA only) or  SS 655:2020 or  IEC 60335-2-80:2015 + SS 360:1992 (sub-clauses 5.7 & 5.8 only) (for renewal only)
	<u>Additional requirements for electrical products</u> <u>Additional requirements for ceiling and cycle fans</u>	
<b>Gas canister</b> A non-refillable metallic container up to 1.4 litres capacity filled with liquefied petroleum gases intended for household use with a portable gas cooker.	SS 400:1997	
	<u>Additional requirements for gas appliances</u>	
<b>Hair care appliances</b> Hair care appliances, limited to hair dryers, hair curlers, hair straighteners and hair stylers, which are electrical hand-held appliances intended for household use to dry or care for human hair, with rated voltage of not more than 250 VAC.	IEC 60335-2-23:2003	IEC 60335-2-23:2016 + A1:2019
	<u>Additional requirements for electrical products</u>	

\* Effective from 1st June 2024 (for new registration) or 1st June 2025 (for renewal of registration)

Controlled Good and Definition	Minimum Editions of Safety Standard(s) and Additional Requirements	
	Current	From June 2024/2025 *
<b>Home computer system (inclusive of monitor, printer, speaker and other mains operated accessories)</b> Home computer system (inclusive of monitor, printer, speaker and other mains operated accessories), which is a microcomputer and its associated accessories, intended for household use, with rated voltage of not more than 250 VAC.	IEC 62368-1:2014 or IEC 60950-1:2001	IEC 62368-1:2018 or IEC 60950-1:2005 + A1:2009 + A2:2013
	<u>Additional requirements for electrical products</u> <u>Additional requirements for computer products</u>	
<b>Iron</b> Irons, which are electrical hand-held appliances intended for household use, with a heated soleplate for smoothing or pressing fabric, including those with a separate water reservoir or boiler having a capacity not exceeding 5 litres, with rated voltage of not more than 250 VAC.	IEC 60335-2-3:2002	IEC 60335-2-3:2012 + A1:2015
	<u>Additional requirements for electrical products</u>	
<b>Isolating transformer for downlight fitting</b> Isolating transformers for downlight fitting, which are isolating transformers intended for household electrical installation with input and output windings that are electrically separated to limit hazards due to accidental simultaneous contact with earth and live parts or metal parts that may become live in the event of an insulation failure.	<u>Magnetic type</u>	
	IEC 61558-2-6:1997	IEC 61558-2-6:2021
	<u>Electronic type</u>	
	IEC 61347-2-2:2000	IEC 61347-2-2:2011
	<u>Additional requirements for electrical products</u>	
<b>Kitchen machines</b> Kitchen machines, including mixers, blenders and mincers, which are electrical appliances intended for household use to prepare food or beverages, with rated voltage of not more than 250 VAC.	IEC 60335-2-14:2002	IEC 60335-2-14:2016 + A1:2019
	<u>Additional requirements for electrical products</u>	

\* Effective from 1st June 2024 (for new registration) or 1st June 2025 (for renewal of registration)

Controlled Good and Definition	Minimum Editions of Safety Standard(s) and Additional Requirements	
	Current	From June 2024/2025 *
<b>Lamp control gear</b>  Lamp control gears, which are electrical devices intended for household electrical installations that limit the current of the lamp or supply constant current or constant voltage power to LED lighting.	<u>Magnetic type</u>  IEC 61347-2-8:2000	IEC 61347-2-8:2000 + A1:2006  <u>Electronic type</u>  IEC 61347-2-3:2000
	<u>For LED driver</u>  IEC 61347-2-13:2006	IEC 61347-2-3:2011 + A1:2016  IEC 61347-2-13:2014 + A1:2016
	<u>Additional requirements for electrical products</u>	
<b>Liquid heating appliances</b>  Liquid heating appliances, limited to kettles, air pots and hot water dispensers, which are electrical appliances intended for household use to heat liquids for consumption that have a rated capacity not exceeding 10 litres, with rated voltage of not more than 250 VAC.	<u>Hot water dispenser (storage type)</u>  IEC 60335-2-21:2004	IEC 60335-2-21:2012 + A1:2018  <u>Hot water dispenser (instantaneous type)</u>  IEC 60335-2-35:2002
	<u>Other liquid heating appliances</u>  IEC 60335-2-15:2002	IEC 60335-2-35:2012 + A1:2016 + A2:2020  IEC 60335-2-15:2012 + A1:2016 + A2:2018
	<u>Additional requirements for electrical products</u> <u>Additional requirements for electric air pot</u> <u>Additional requirements for water dispensers</u>	
<b>Microwave oven</b>  Microwave ovens, which are electrical appliances intended for household use that use high-frequency electromagnetic waves for heating food or beverages, with rated voltage of not more than 250 VAC.	IEC 60335-2-25:2002	IEC 60335-2-25:2020
	<u>Additional requirements for electrical products</u>	

\* Effective from 1st June 2024 (for new registration) or 1st June 2025 (for renewal of registration)

Controlled Good and Definition	Minimum Editions of Safety Standard(s) and Additional Requirements	
	Current	From June 2024/2025 *
<b>Multi-way Adaptor</b> Multi-way adaptors, which are intended for household use, have more than one set of socket contacts, and which may or may not be of the same type or rating as the plug pin portion.	SS 145-3: 2020	
	<u>Additional requirements for Multi-way Adaptors</u>	
<b>Portable socket-outlet</b> 3-pin portable socket-outlets, including portable cable reels, which are electrical accessories intended for household use that have at least a set of 13-amp shuttered socket-outlets with flexible cords, and which can be easily moved from one place to another while connected to rated voltage supply of not more than 250 VAC.	<u>3-pin portable socket-outlet</u> SS 145-2:1997   SS 145-2:2018 <u>3-pin portable socket-outlet with USB port and/or electronic device</u> SS 145-2:2018 <u>Portable cable reel</u> SS 307:1996 <u>Power track's tap-off unit</u> SS 241:1996 + SS 145-2:2018 (seq. 1, 2, 3 only) <u>Power track's tap-off unit with USB port(s) and/or electronic device(s)</u> SS 241:1996 + SS 145-2:2018	
	<u>Additional requirements for electrical products</u> <u>Additional requirements for portable/mains socket outlet and portable cable reels</u>	
<b>Residual Current Circuit Breaker (RCCB)</b> Residual current circuit breaker (RCCB), which is an electrical device intended for household fixed-electrical installation with sensitivity of 30 mA intended to protect persons against indirect contact, the exposed conductive parts of the installation being connected to an appropriate earth electrode.	SS 97-1:2005	SS 97:2016
	<u>Additional requirements for electrical products</u> <u>Additional requirements for RCCB</u>	

\* Effective from 1st June 2024 (for new registration) or 1st June 2025 (for renewal of registration)



Controlled Good and Definition	Minimum Editions of Safety Standard(s) and Additional Requirements	
	Current	From June 2024/2025 *
<b>Rice cooker</b> Rice cookers, which are electrical appliances intended for household use to cook rice, with rated voltage of not more than 250 VAC.	IEC 60335-2-15:2002	IEC 60335-2-15:2012 + A1:2016 + A2:2018
	<u>Additional requirements for electrical products</u>	
<b>Stationary cooking appliances</b> Stationary cooking appliances, limited to cooking ranges, hobs and ovens, which are electrical stationary appliances intended for household use for cooking, with rated voltage of not more than 250 VAC for single-phase and 480 VAC for three-phase.	IEC 60335-2-6:2002	IEC 60335-2-6:2014 + A1:2018
	<u>Additional requirements for electrical products</u>	
<b>Toaster, grill, roaster, hot plate, deep fryer, wok and similar appliances</b> Toasters, grills, roasters, hot plates, deep fryers and similar appliances, which are electrical appliances intended for household use that use heated medium such as air and cooking oil for food preparation, with rated voltage of not more than 250 VAC.	<u>Toaster, hot plate (including induction type), grill, oven, and similar appliances</u>	
	IEC 60335-2-9:2002	IEC 60335-2-9:2019
	<u>Deep fryer, electric wok, and similar appliances</u>	
	IEC 60335-2-13:2002	IEC 60335-2-13:2021
	<u>Outdoor electric barbeque grill</u>	
	IEC 60335-2-78:2002	IEC 60335-2-78:2021
	<u>Additional requirements for electrical products</u> <u>Additional requirements for roasters</u>	

\* Effective from 1st June 2024 (for new registration) or 1st June 2025 (for renewal of registration)

Controlled Good and Definition	Minimum Editions of Safety Standard(s) and Additional Requirements	
	Current	From June 2024/2025 *
<b>Vacuum cleaner</b> Vacuum cleaners, which are electrical portable appliances intended for household use to remove dirt or dust, with supply voltage of not more than 250 VAC.	IEC 60335-2-2:2002	IEC 60335-2-2:2019
	<u>Additional requirements for electrical products</u>	
<b>Washing machine</b> Washing machines, which are electrical appliances intended for household use to wash clothes and textiles, with rated voltage of not more than 250 VAC.	IEC 60335-2-7:2000	IEC 60335-2-7:2019
	<u>Additional requirements for electrical products</u>	
<b>3-pin mains plugs</b> 3-pin mains plugs, limited to 13-amp rectangular types and 15-amp round types, which are portable devices that have rectangular or cylindrical projecting pins designed to engage with the contacts of a corresponding socket-outlet. 3-pin mains plugs also incorporate means for the electrical connection and the mechanical retention of a suitable flexible cord.	<u>13-amp plug with rectangular plug pins</u> SS 145-1:1997	<u>13-amp plug with rectangular plug pins</u> SS 145-1:2019
	<u>15-amp plug with round plug pins</u> SS 472:1999	<u>15-amp plug with round plug pins</u> SS 472:1999(2020) + E1:2001/A1:2020
	<u>Additional requirements for electrical products</u>	

\* Effective from 1st June 2024 (for new registration) or 1st June 2025 (for renewal of registration)

**High Risk Controlled Goods**

Controlled Good and Definition	Minimum Editions of Safety Standard(s) and Additional Requirements
<p><b>Components of the Liquefied Petroleum Gas system</b></p> <p><u>Hose</u> Hose, namely a hose intended for household use in liquefied petroleum gas vapour phase and liquefied petroleum gas or air appliances not exceeding 5 KPa (50 mbar) operating pressure.</p> <p><u>Regulator</u> Regulator, which is a non-adjustable device intended for household use that maintains the outlet pressure constant at a nominal value up to and including 50 mbar, independent, within specified limits, of inlet pressure or flow rate.</p> <p><u>Valve</u> Valve, which is a device that is made from brass, bronze or aluminum forging, intended for household use with liquefied petroleum gas cylinders, to control the direction and volume of flow of the liquefied petroleum gas.</p>	<p><u>Hose</u> SS 233: 2013</p> <p><u>Regulator</u> SS 281: 1984</p> <p><u>Valve</u> SS 294: 1998</p> <p><u>Additional requirements for high-risk Controlled Goods</u></p>
<p><b>Domestic electric wall switch</b></p> <p>Domestic electric wall switches, which are electrical manually operated general purpose switches for alternating current only, with a rated voltage not exceeding 440 V and a rated current not exceeding 63 A, intended for household fixed-electrical installations.</p>	<p><u>13A fused connection units (switched)</u> SS 403: 1997</p> <p><u>Other domestic electric wall switch</u> IEC 60669-1: 2017</p> <p><u>Additional requirements for electrical products</u> <u>Additional requirements for high-risk Controlled Goods</u></p>

Controlled Good and Definition	Minimum Editions of Safety Standard(s) and Additional Requirements
<p><b>Gas cooking appliances</b></p> <p>Gas cooking appliances, limited to built-in, table, free standing and portable gas cookers, which are cooking appliances intended for household use that use gas or liquefied petroleum gas obtained from a non-refillable gas canister up to 1.4 litres as fuel.</p>	<p><u>Gas Cooker</u> EN 30-1-1:2008 + A3:2013 or AS 5263.1.1:2020</p> <p><u>Forced-convection gas oven</u> EN 30-1-2:2012</p> <p><u>Glass-ceramic gas hob with enclosed covered burner</u> EN 30-1-3:2003 + A1:2006</p> <p><u>Gas cooker with automatic burner control system</u> EN 30-1-4:2012 + IEC 60335-2-102:2017</p> <p><u>Portable gas appliance</u> SS 401:1997</p> <p><u>Additional requirements for gas appliances</u> <u>Additional requirements for high-risk Controlled Goods</u></p>
<p><b>Mains socket-outlets</b></p> <p>Mains socket-outlets, which are electrical devices that have 13-amp or 15-amp switched shuttered socket-outlets in a single or multiple arrangement, to engage with the pins of a corresponding plug designed for flush mounting in a suitable box or for surface or panel mounting.</p>	<p><u>3-pin 13-amp socket-outlet</u> SS 145-2:2018</p> <p><u>3-pin 13-amp socket-outlet (cooker control unit)</u> BS 4177:1992 + A1:1993 + A2:1997 + A3:2004 + A4:2007</p> <p><u>3-pin 13-amp socket-outlet with RCD</u> BS 7288:2016</p> <p><u>3-pin round type 15-amp socket-outlet</u> SS 472:1999(2020) + E1:2001/A1:2020</p> <p><u>Additional requirements for electrical products</u> <u>Additional requirements for high-risk Controlled Goods</u> <u>Additional requirements for portable/mains socket outlet and portable cable reels</u></p>

Controlled Good and Definition	Minimum Editions of Safety Standard(s) and Additional Requirements
<b>Refrigerators</b>  Refrigerators, which are electrical appliances intended for household use that operate on the vapour compression principle for food storage and preservation, with rated voltage of not more than 250 VAC.	IEC 60335-2-24:2020
	<u>Additional requirements for electrical products</u> <u>Additional requirements for high-risk Controlled Goods</u>
<b>Water heaters</b>  Water heaters, limited to instantaneous and storage types, which are electrical appliances intended for household use to heat water below boiling temperature, with rated voltage of not more than 250 VAC.	<u>Instantaneous electric water heater</u> IEC 60335-2-35:2012 + A1:2016 + A2:2020  <u>Mains pressure electric storage water heater</u> IEC 60335-2-21:2012 + A1:2018
	<u>Additional requirements for electrical products</u> <u>Additional requirements for water heaters</u> <u>Additional requirements for high-risk Controlled Goods</u>

## 4.2 Additional Requirements for registration of Controlled Goods

The CPSO monitors the safety of Controlled Goods sold in Singapore by investigating complaints, incidents and accidents reported to the CPSO. The information will be leveraged upon to develop the operational interventions within these additional requirements. These requirements are to be fulfilled in addition to the applicable safety standards.

### Requirements applicable to electrical products

No.	Items	Requirements
1	All appliances	All appliances must be tested to 230 VAC, 50 Hz.
2	Circuit Diagrams	Circuit diagrams must be indicated with component's values for products tested to IEC 60065 and IEC 60950.
3	Circuit diagrams of electronic modules in electrical appliances	Circuit diagrams of the electronic modules in the electrical appliances must be provided.
4	Appliances fitted with voltage selector (voltage mis-match test)	Appliance shall be tested as follows: Connect appliance to 230 VAC mains with voltage selector switch to settings not suitable for operation at 230 VAC.
5	Appliances with tropical condition test requirements in applicable Standards	All appliances (with tropical test requirements in applicable Standards) shall comply with the tropical condition test as stated in the relevant IEC Standards.
6	Appliances rated $\geq 3$ kW or connected to fixed wiring	Electric appliance $\geq 3$ kW must be connected to fixed wiring. All connections to fixed wiring must be in accordance with SS 638. If a range of power output is given, the maximum value output will be taken. Value will be based on supplier's declared output.
7	Controlled Goods which are Class I appliances	All Class I appliances must be fitted with 3-pin mains plugs that are registered with the CPSO.
8	Controlled Goods which are Class II appliances	a) All Class II appliances must be fitted with 2-pin mains plug ( <a href="#">Appendix K</a> ) compliant with EN 50075. b) Class II appliances fitted with 3-pin mains plugs must use plugs that are registered with the CPSO
9	Detachable power cord set (consists of mains plug, mains cord and appliance connector)	Detachable power cord set must be listed in the test report critical component list.

No.	Items	Requirements
10	Controlled Goods with rated voltage that are not suitable for local supply voltage	<p>a) Controlled Goods with rated voltage that are not suitable for local supply voltage will not be allowed for registration unless they are supplied with step-down isolating transformer and are tested together with the transformer as a complete set.</p> <p>b) A test to ensure that the Controlled Goods shut down/fail safely should the consumer accidentally plug the product directly into the 230 V mains supply socket outlet without using the isolating step-down transformer shall be conducted.</p>
11	Controlled Goods with direct plug-in 3-pin (eg. 3-pin AC adaptor, 3-pin Power Line Adaptor)	Test report showing that the 3-pin ( <a href="#">Appendix M</a> ) complies with sub-clauses 12.1 & 12.3 of BS 1363-3, or clauses 12.1 & 12.3 of SS 145-3: 2020 shall be provided.
12	Controlled Goods with direct plug-in 2-pin (eg. 2-pin AC adaptor, 2-pin Power Line Adaptor)	The 2-pin ( <a href="#">Appendix M</a> ) shall be in accordance with EN 50075.

#### Requirements applicable to AC adaptor

No.	Items	Requirements
13	Detachable power supply cord set not supplied by Registered Supplier	<p>a) A Registered Supplier who is not supplying the detachable power supply cord set together with the AC Adaptor must provide written instructions to its customer on the type of approved detachable power cord set to use. This shall be declared to the Conformity Assessment Body when applying for Certificate of Conformity.</p> <p>b) This requirement is only applicable to Registered Suppliers whose core business is supplying AC Adaptors or its Registered Supplier name is affiliated with the AC Adaptor's manufacturer.</p>
14	AC Adaptor incorporated with 13A socket-outlet	Additional tests to clauses 13, 17 and 18 of SS 145-3: 2020 shall be provided.

No.	Items	Requirements
15	AC adaptor with detachable interchangeable plug pins	A Registered Supplier who is supplying AC adaptors with detachable interchangeable plug pins must include with its products, written instructions to inform customers on the type of detachable interchangeable plug pins that are approved and suitable to use in Singapore. These instructions are to be submitted to the Conformity Assessment Body for verification when applying for Certificate of Conformity.
16	AC adaptor to be used with/ bundled together with Personal Mobility Devices (PMDs)	<ul style="list-style-type: none"> <li>a) Registered Supplier to declare the model of the AC adaptor that is to be used with/ bundled together with the PMDs;</li> <li>b) Registered Supplier to provide valid IEC 60950-1 or IEC 62368-1 test reports for certification and registration of the declared AC adaptor under the CPSR; and</li> <li>c) Registered Supplier to provide the UL 2272 test report as a supporting document, showing that the listed AC adaptor in the UL 2272 test report is the model declared to be used with/ bundled together with the PMDs.</li> </ul>

**Requirements applicable to electric airpot**

No.	Items	Requirements
17	Reboil switch	No part of the reboil switch is allowed to protrude into the water pot, even if it is located above the maximum water level mark.

**Requirements applicable to computer products**

No.	Items	Requirements
18	CD/DVD ROM drive (used in personal computer)	Test certificate showing that CD/DVD ROM drive has complied with IEC 60825-1 must be provided.
19	Modem Card (used in personal computer)	<p>Modem card incorporated in the personal computer must be tested at component level or at set level to:</p> <ul style="list-style-type: none"> <li>a) IEC 60950-1: 2001 (sub-clauses 5.1 &amp; 6 only) or newer editions (see Chapter 4.1 for validity); or</li> <li>b) IEC 60950-1: 2005 + A1:2009 + A2:2013 (sub-clauses 5.1 &amp; 6 only)</li> </ul>



No.	Items	Requirements
20	Powerline Ethernet Adaptor incorporated with 13A socket-outlet	Additional tests to clauses 13, 17 & 18 of SS 145-3: 2020 shall be provided.

**Requirements applicable to ceiling fan and cycle fan**

No.	Items	Requirements
21	Ceiling fan	<p>a) These appliances if tested to IEC 60335-2-80 must also be tested to annex ZA of SS 655: 2020.</p> <p>b) Installation instruction must mention the 3 expansion bolts for fastening the main suspension, safety cord, expansion bolt with hook for fastening safety cord and mounting plate. (<u>Appendix I</u>)</p> <p>c) The warranty issued shall recommend user to conduct regular examination of the fan suspension system at least once in every two years. (<i>For example: Users are advised to contact the fan supplier to conduct regular examination of the fan suspension system at least once in every two years.</i>) Written permission from the CPSO shall be obtained if a warranty with the above note is not supplied with the product.</p>
22	Cycle Fan	<p>a) These appliances if tested to IEC 60335-2-80 must also be tested to annex ZA of SS 655: 2020.</p> <p>b) Installation instruction shall mention the 3 expansion bolts for fastening the main suspension, safety cord, and expansion bolt with hook to fasten the safety cord and mounting plate. (<u>Appendix I</u>)</p>

No.	Items	Requirements
23	Decorative ceiling fan	<p>a) These appliances if tested to IEC 60335-2-80 must also be tested to annex ZA of SS 655: 2020.</p> <p>b) Installation instruction shall mention the 3 expansion bolts for fastening of the main suspension, safety cord, and expansion bolt with hook to fasten the safety cord and mounting plate (<u>Appendix I</u>).</p> <p>c) Decorative ceiling fan submitted to Conformity Assessment Body (CAB) for certification shall be subjected to conformity check. CAB shall request a new sample and check the identical safety components are listed in the test report of IEC 60335-2-80. The check also covers the minimum dimension requirements and availability of the safety cord indicated in the test report for annex ZA of SS 655: 2020.</p> <p>d) Drawing (<u>Appendix H</u>) to show that the wires within the motor shaft are not stressed must be provided.</p> <p>e) The warranty issued shall recommend users to conduct regular examination of the fan suspension system at least once in every two years. (<i>For example: Users are advised to contact the fan supplier to conduct regular examination of the fan suspension system at least once in every two years.</i>) Written permission from the CPSO shall be obtained if a warranty with the above note is not supplied with the product.</p>

**Requirements applicable to portable/mains socket-outlet and portable cable reel**

No.	Items	Requirements
24	Portable socket-outlet and portable cable reel	<p>a) If residual current device (RCD) is incorporated, its tripping current must be less than 30mA and operating time must be less than 0.1 second and testing to the following is required</p> <ol style="list-style-type: none"> <li>SS 97-1: 2005 (sub-clauses 9.9.2.1, 9.9.2.2, 9.9.2.3 and 9.16) or newer editions (see Chapter 4.1 for validity); or</li> <li>SS 97-1: 2016 (sub-clauses 9.9.2.1, 9.9.2.2, 9.9.2.3 and 9.16)</li> </ol> <p>b) The shutters screening the current-carrying socket contacts shall not be opened by the insertion of any corresponding SINGLE pin of the plug into any current-carrying socket aperture.</p>

No.	Items	Requirements
25	Wall switched socket-outlet (2 x single socket-outlet)	Single socket-outlet with 2-gang faceplate/frame must be fulfilled with the test requirements as 2-gang socket-outlet.
26	Remote controlled socket-outlets	Remote controlled mains socket-outlet and/or portable socket outlet shall not be allowed for registration.
27	3-pin 13-amp socket outlet incorporated with type C USB port(s) or 3-pin portable socket-outlet incorporated with type C USB port(s)	3-pin 13-amp socket outlet or 3-pin portable socket-outlet incorporated with type C USB port(s) shall be tested to SS 145 - 2: 2018 with Annex I.3


#### Requirements applicable to roaster

No.	Items	Requirements
28	Roaster	<p>A metal ring (<u>Appendix N</u>) must be provided to prevent the roaster from falling off in the case of the glass bowl shattering.</p> <p>If the supplier has other methods, approval would be required from the CPSO</p> <p>Note: This requirement is not applicable to a roaster that is provided with metal bowl.</p>

#### Requirements applicable to gas appliances

No.	Items	Requirements
29	Test pressure of town gas for gas appliances	All gas appliances must be tested up to 31 mbar for town gas.
30	Gas appliances tested to EN 30-1-1: 2008	<p>Testing to sub-clause 6.1.6 (Temperature of the LPG cylinder and its compartment) and sub-clause 6.2.1 (Ignition, cross-lighting and flame stability) must be carried out.</p> <p>To use G112 gas as a limit gas for test clause 7.3.2.1.3 third test group to check for occurrence of light back, under performance clause 6.2.1.1.</p>

No.	Items	Requirements
31	Flame failure device (FFD) incorporated in gas appliances	<p><u>Component testing</u></p> <p>Supplier can choose to provide one of the following:</p> <ul style="list-style-type: none"> <li>a) Test report/certificate showing that the FFD complied with EN 126: 1995 or EN 125: 1991 for gas appliance tested to EN 30-1-1 at component level must be provided.</li> <li>b) Test report/certificate showing that FFD complied with AS 4620 – Thermoelectric flame safeguards for gas appliance tested to AS 5263.0:2017 or AS 5263.1.1:2020 at component level must be provided.</li> </ul> <p><u>Set testing</u></p> <p>Supplier can choose to test to one of the following:</p> <ul style="list-style-type: none"> <li>a) Testing to sub-clause 6.1.3 of EN 30-1-1 at set level must be carried out.</li> <li>b) Testing to sub-clauses of 3.6.1.15 of AS 5263.0:2017 at set level must be carried out.</li> </ul>
32	Gas oven	It is compulsory for all gas ovens to be fitted with flame failure device.
33	Toughened glass gas hob	<ul style="list-style-type: none"> <li>a) A brochure on safe usage of toughened glass appliances as directed by the CPSO, must be included for each toughened glass gas hob put up for sale. (Order for the brochure can be placed with the CPSO)</li> <li>b) Toughened glass gas hob tested to EN 30-1-1 would require testing and compliance to sub-clauses of 5.6.101(a), 5.11.101, 5.11.5, 2.14.2.2(e), 2.15.3.101 &amp; 5.6.104 of AS 5263.1.1:2020</li> </ul>
34	Gasket for elbow joint of gas cooker	Installation instruction must mention the fixing of gasket for the elbow joint, if applicable ( <u>Appendix J</u> ).
35	Glass-ceramic gas hob with enclosed covered burner (simulated gas explosion test)	The gas hob must be subjected to the 'simulated gas explosion' test. The hob is filled with an explosive mixture of gas and detonated with a source of ignition.
36	Material of gas hob cook top	Different materials require separate certification and registration. E.g., stainless steel, enamel, stone, toughened-glass, ceramic-glass

No.	Items	Requirements																																							
37	Gas Canister	<p>a) All registered gas canisters shall be subjected to batch test conducted by the laboratory who conducted the full-type test in accordance with the sampling plan as shown below:</p> <table><tr><th>Batch size</th><th>Sampling size</th><th>Acceptable failure size</th></tr><tr><td>1 – 3200</td><td>13</td><td>2</td></tr><tr><td>3201 – 35000</td><td>20</td><td>3</td></tr><tr><td>35001 – 150000</td><td>32</td><td>5</td></tr></table> <p>b) The sampled gas canisters shall be tested to the following clauses of SS 400 as follows:</p> <table><tr><th rowspan="2">Clause</th><th colspan="3">Sample size</th></tr><tr><th>13</th><th>20</th><th>32</th></tr><tr><td>4.4 (Pressure in canister)</td><td>5</td><td>8</td><td>14</td></tr><tr><td>6 (Dimensions)</td><td>1</td><td>1</td><td>1</td></tr><tr><td>8.2.3 (Drop)</td><td>3</td><td>5</td><td>8</td></tr><tr><td>8.2.9 (Repeated-use)</td><td>3</td><td>5</td><td>8</td></tr><tr><td>10 (Markings)</td><td>1</td><td>1</td><td>1</td></tr></table> <p>c) Registered gas canister shall be affixed with 'SAFETY Mark' and 'batch test sticker'. Both labels shall be affixed either on an individual canister or on the packaging if canisters are sold in multiples.</p> <p>d) Sample of batch test sticker is as shown below:</p> <div><p>BATCHED INSPECTED Serial Number</p></div>	Batch size	Sampling size	Acceptable failure size	1 – 3200	13	2	3201 – 35000	20	3	35001 – 150000	32	5	Clause	Sample size			13	20	32	4.4 (Pressure in canister)	5	8	14	6 (Dimensions)	1	1	1	8.2.3 (Drop)	3	5	8	8.2.9 (Repeated-use)	3	5	8	10 (Markings)	1	1	1
Batch size	Sampling size	Acceptable failure size																																							
1 – 3200	13	2																																							
3201 – 35000	20	3																																							
35001 – 150000	32	5																																							
Clause	Sample size																																								
	13	20	32																																						
4.4 (Pressure in canister)	5	8	14																																						
6 (Dimensions)	1	1	1																																						
8.2.3 (Drop)	3	5	8																																						
8.2.9 (Repeated-use)	3	5	8																																						
10 (Markings)	1	1	1																																						
38	Installation manual or installation instructions for gas cookers	<p>All registered gas cookers shall be supplied with installation manual or installation instructions within the operating manual, user's manual, user's guide, etc. which shall also include safety instructions for use of the gas cooker.</p> <p>Where installation or instruction manuals are provided in e-copy, adequate means shall be provided in the packaging to ensure users are made aware where to access such documents and information.</p>																																							
	Note: Refer to <u>Appendix O</u> for specifications of LPG and Town Gas supplied in Singapore																																								

**Requirements applicable to Residual Current Circuit Breaker (RCCB)**

No.	Items	Requirements
39	RCCB	a) Registration of RCCB is limited to those with 30 mA sensitivity and the operating time must be less than 0.1 second. Electronic RCCB will not be accepted for registration. b) Registered Suppliers must affix the Safety Mark on the RCCB and the Safety Mark must be identifiable when installed.

**Requirements applicable to electric instantaneous and storage water heater**

No.	Items	Requirements
40	Instantaneous electric water heater and mains pressure electric storage water heater	a) Heating elements used must not be of the 'bare-element' type. b) Registered Supplier must declare that the water heater is not using bare heating element when applying Certificate of Conformity with Conformity Assessment Body.
41	Water heater incorporated with residual current device (RCD)	Testing to the following is required. a) SS 97-1: 2005 (sub-clauses 9.9.2.1, 9.9.2.2, 9.9.2.3 and 9.16) or newer editions (see Chapter 4.1 for validity); or b) SS 97-1: 2016 (sub-clauses 9.9.2.1, 9.9.2.2, 9.9.2.3 and 9.16)
42	Pressure-relief device (for closed storage water heater)	a) Closed water heaters having a rated pressure of 0.6 MPa and above shall be provided with a pressure-relief device. b) Pressure-relief devices shall prevent the pressure in the container from exceeding the rated pressure by more than 0.1 MPa.
43	Thermal cut-out (for closed instantaneous and storage water heater)	a) Closed water heaters shall incorporate a thermal cut-out providing all-pole disconnection and which operates independently from the thermostat. b) Registered Supplier must declare that the water heater is incorporated with a thermal cut-out providing all pole disconnection when applying for Certificate of Conformity.

No.	Items	Requirements
44	Instruction/user manual for storage water heaters	<p>Instruction/user manual of the storage water heaters to include but not limited to the following information:</p> <p>Where installation or instruction manuals are provided in e-copy, adequate means shall be provided in the packaging to ensure users are made aware where to access such documents and information</p> <p>a) For consumer</p> <ul style="list-style-type: none"> <li>• Operating instructions</li> <li>• Parts identification – indicating critical safety components such as the thermostat, pressure relief valve, etc.), and advice to consumers on how to identify them</li> <li>• Safety precaution/ tips</li> <li>• General maintenance instructions – to include how to check the functionality of safety features such as the pressure relief valve, and good practices to check for and minimise wear and tear</li> <li>• Troubleshooting guide - e.g., how to look out for signs of malfunction, and include appropriate warnings to stop using the appliance, and seek out qualified service technicians to rectify potential issues</li> <li>• Advise to consumers to have the storage water heater serviced periodically by a qualified service technician</li> </ul> <p>b) For authorised installers</p> <p>Installation instructions:</p> <ul style="list-style-type: none"> <li>• Appropriate storage tank location, and secure mounting</li> <li>• Electrical connections – connections should account for electrical safety, and prevent short circuit/ electrocution</li> <li>• Piping connections – connections should account for potential pressure build ups and possibility of leakage/ corrosion</li> <li>• Pressure relief valve connection</li> </ul> <p>c) Warning note</p> <ul style="list-style-type: none"> <li>• To warn the consumer that the storage water heater should only be repaired/serviced by a qualified service technician</li> <li>• To warn the consumer that the storage water heater should only be operated with all the safety devices fitted and functioning</li> </ul>

**Requirements applicable to multi-way adaptor**

No.	Items	Requirements
45	Multi-way adaptor with 3-pin socket-outlets or combination of 3-pin and 2-pin socket-outlets	<p>a) The socket contacts of the adaptor shall only accept 13A 3-pin mains plug complying with SS 145 and/or 2.5A 2-pin mains plug complying with EN 50075.</p> <p>b) The shutters screening the current-carrying socket contacts shall not be opened by the insertion of any corresponding <b>SINGLE</b> pin of the plug into any current-carrying socket aperture.</p> <p>c) A barrier or other acceptable means shall be provided on the engagement surface of the 2.5A 2-pin socket-outlet of the adaptor to PREVENT entry of any types of 2-pin mains plugs except those complying with EN 50075. <b>(Note: shutters cannot be regarded as barriers)</b></p> <p>d) Adaptor incorporated with switch would require additional test to:</p> <ul style="list-style-type: none"> <li>i. SS 145-2: 1997 (sub-clauses 13.11, 17.1.3 and 18.1.3) or newer editions (see Chapter 4.1 for validity); or</li> <li>ii. SS 145-2: 2018 (sub-clauses 13.11, 17.1.3 and 18.1.3)</li> </ul>

**Requirements applicable to plasma / LCD display monitor**

No.	Items	Requirements
46	Plasma/LCD display monitor with TV tuner	<p>Plasma/LCD display monitor tested to IEC 60950 would require additional tests to:</p> <p>a) IEC 60065: 2001 [clauses 9 (related to antenna only), 10.1, 10.2, 10.3 and 12.5] or newer editions (see Chapter 4.1 for validity); or</p> <p>b) IEC 60065: 2014 [clauses 9 (related to antenna only), 10.2, 10.3, 10.4 and 12.5]</p>

**Requirements applicable to table lamp / standing lamp**

No.	Items	Requirements
47	Child appealing table lamp/standing lamp	<p>Child appealing table/standing lamp will not be allowed for registration unless it is powered by an AC Adaptor. Only the AC Adaptor would need registration.</p>



**Requirements applicable to hot / warm & cold water dispenser**

No.	Items	Requirements
48	Hot & cold water dispenser	<p>a) Hot water dispenser which has below boiling temperature shall be tested to IEC 60335-2-21 or IEC 60335-2-35.</p> <p>b) Testing to IEC 60335-2-24 shall be required if the water dispenser is incorporated with compressor for dispensing cold water.</p>

**Requirements applicable to high risk Controlled Goods**

No.	Items	Requirements
49	Renewal of registration for high risk Controlled Goods	<p>Application for renewal of registration of high risk Controlled Goods shall be supported with a valid new test report that is within 3 years when submitted to the Conformity Assessment Body for re-certification. Valid new test report refers to new full type test report. The following are not accepted:</p> <p>a) Test report (submitted during initial CoC application) + supplementary test report; and</p> <p>b) Test report (submitted during initial CoC application) + verification test report.</p> <p>The following Controlled Goods are deemed as high risk:</p> <ul style="list-style-type: none"> <li>• Gas Cooking appliances</li> <li>• Components of LPG system (hose, regulator &amp; valve)</li> <li>• Mains socket-outlets</li> <li>• Water heaters</li> <li>• Refrigerator</li> <li>• Domestic electric wall switch</li> </ul>

## **5.0 Registration**

---

### **5.1 Parties that Need to Apply for Registration**

No party shall be allowed to advertise and/or supply the Controlled Goods unless they have been registered with the CPSO. **Registered Suppliers** are responsible for the safety and compliance of Controlled Goods registered under their name. The registration will be withdrawn when the party registered as '**Registered Supplier**' ceases to supply the Controlled Goods registered by it. For instance, where it ceases to carry on such business or is no longer registered with the Accounting & Corporate Regulatory Authority (ACRA).

In general, only one party in the chain of supply of the Controlled Goods in Singapore needs to register the Controlled Goods with the CPSO. The following descriptions for each party provide more details on when registration is needed:

#### **Importer**

Importers who import Controlled Goods that are meant for sale in Singapore are required to apply for registration with the CPSO. No registration is needed if the Controlled Goods are meant for export only. However, these '**For Export Only**' Controlled Goods shall not be advertised, supplied, displayed in any retail outlets and/or made available for sale in Singapore under any circumstances. Merely labelling the Controlled Goods or stamping the receipts with '**For Export Only**' is also not allowed.

#### **Parallel Importer**

Any parallel importer of the same brand and model of Controlled Goods are also required to apply for registration.

#### **Retailer**

Retailers are required to apply for registration if they import the Controlled Goods themselves. Retailers who source for registered Controlled Goods and subsequently make modifications to the Controlled Goods which impact the safety or change the brand and model number of the Controlled Goods need to apply for registration as well.

#### **Manufacturer**

Unless another party in the chain of supply has already registered the Controlled Goods with the CPSO, manufacturers in Singapore who supply the Controlled Goods to be sold in Singapore are required to apply for registration.

#### **New Distributor**

When a company (Registered Supplier) relegates its ownership of its registered Controlled Goods to another business entity, the latter has to re-register the Controlled Goods with the CPSO. Approval from the CPSO is required for the new distributor to take over registration of

the Controlled Goods. Thereafter, the new distributor has to go to a CAB (Certification) or CAB (Certification – MRA) to obtain the CoC prior to having the Controlled Goods re-registered with the CPSO. For Controlled Goods registered on the basis of SDoC, the new distributor has to approach the CPSO. Please refer to [Chapter 4](#) for more details on product categorisations to determine if CoC or SDoC is applicable.

## **5.2 Registration of Supplier of Controlled Goods**

Suppliers who wish to supply the Controlled Goods to consumers in Singapore would first have to register with the CPSO. After completing the registration process with the CPSO, they will thereafter be referred to as **‘Registered Suppliers’**. Registration to be a “Registered Supplier” is free-of-charge. A flow-chart for registration as a supplier of Controlled Goods is found below: **Becoming a Registered Supplier:**

A supplier wishing to sell Controlled Goods in Singapore can apply to become a Registered Supplier via online e-Registration:

- 1) Visit <https://www.cpsaplus.gov.sg/HomePage/>
- 2) Login using your CorpPass details
- 3) Click on ‘Register Now’ when prompted to register as a Registered Supplier and follow onscreen instructions

Note that a copy of the Certification of Incorporation of Private Company/Certificate of Registration issued by ACRA will be required for registration



Upon successful registration, the Registered Supplier will receive an email with a link to the CPSA+ portal, where it can access services such as:

- Registration of Low Risk Controlled Goods
- Accessing details of registered Controlled Goods
- Accessing resources and reference materials related to the Consumer Protection (Safety Requirements) Regulations



The Registered Supplier can now register Controlled Goods by submitting SDoCs online or approaching any designated Conformity Assessment Bodies (CABs) to apply for CoCs

Suppliers may visit [www.consumerproductsafety.gov.sg](http://www.consumerproductsafety.gov.sg) to browse the list of CABs to their products for testing and certification.

### **Changes in Particulars of Registered Supplier**

In cases where there are changes to the particulars specified below of the Registered Suppliers, the Registered Suppliers are required to update this change online **not less than two (2) weeks** before such occurrence under Regulation 15 of the Consumer Product (Safety Requirements) Regulations.

- a) Company's name;
- b) Company's registered address;
- c) Name and title of person authorised to represent the company;
- d) Telephone number;
- e) Email address, etc.

Registered Suppliers shall log into their Registered Supplier account online at <https://www.cpsaplus.gov.sg/HomePage/> to update changes to their particulars.

For Registered Suppliers who require assistance logging in:

- The username for the Registered Supplier account will be their company's UEN (Unique Entity Number)
- Registered Suppliers can then use their username to do a password reset. The password reset email will be sent to their registered email address.

## **5.3 Registration of Controlled Goods**

### **For Low Risk Level Controlled Goods**

A Registered Supplier that decides to supply Low Risk Controlled Goods in Singapore will have to submit a Supplier's Declaration of Conformity (SDoC) to the CPSO. New product registration can be done online at <https://www.cpsaplus.gov.sg/HomePage/>. The registration fee for each new product registration will be \$180 (excluding GST), payable to the CPSO.

For more details, refer to the flow-chart for the registration of Low Risk Controlled Goods as follows:

**For Registration of Low Risk Level Controlled Goods (based on SDoC)**

Registered Supplier first obtains documentation (i.e. test reports) certifying their Controlled Goods meet required safety standards specified in Chapter 4. The following test report types are accepted:

- 1) Reports with IECCE CB certificates
- 2) Reports issued by testing laboratories accredited by the Singapore Accreditation Council or its Mutual Recognition Agreement partners
- 3) Reports issued by CABs (Testing)

Registered Suppliers may obtain relevant documentation from the original manufacturer of the Controlled Goods or send Controlled Goods to a CAB (Testing) to be tested



Registered Supplier declares the Controlled Goods comply with the relevant safety requirements by submitting SDoC online.

- 1) Visit <https://www.cpsaplus.gov.sg/Homepage/>
- 2) Log into the Registered Supplier account
- 3) Select “My Controlled Goods” at the sidebar on the left.
- 4) Select “New Registration” and follow the onscreen instructions



The CPSO will approve the registration and issue a Letter of Approval (LOA) if the information in the SDoC is deemed to be in order



Upon receiving the Letter of Approval, Registered Supplier can affix SAFETY Mark to the Controlled Goods and sell it in Singapore

The Registered Supplier is required to maintain a Technical File for each registered Controlled Goods as specified in Chapter 7.

### **For Medium and High Risk Level Controlled Goods**

A Registered Supplier that decides to supply Medium and High Risk Level Controlled Goods in Singapore shall submit application to CAB (Certification) or CAB (Certification – MRA) for certification.

After the Controlled Goods have been successfully certified, the CAB (Certification) or CAB (Certification-MRA) shall issue Certificate of Conformity (CoC) ([Appendix D](#)) to the Registered Supplier. The CAB (Certification) or CAB (Certification-MRA) shall submit the CoC with registration fee of \$180 (excluding GST) to the CPSO digitally for registration of the certified Controlled Goods.

For more details, refer to the flow-chart for the registration of Medium & High Risk Controlled Goods found below:

### **For Registration of Medium & High Risk Controlled Goods (based on CoC)**

Registered Supplier first obtains documentation (i.e. test reports) certifying their Controlled Goods complies with required safety standards (Chapter 4.1). All CABs should know safety standards required. The following test report types are accepted:

- 1) Reports with IECEE CB certificates
- 2) Reports issued by testing laboratories accredited by the Singapore Accreditation Council or its Mutual Recognition Agreement partners
- 3) Reports issued by CABs (Testing)

Registered Suppliers may obtain relevant documentation from the original manufacturer of the Controlled Goods or send Controlled Goods to a CAB (Testing) to be tested

Registered Supplier submits the necessary documentation to a CAB (Certification). If everything is found to be in order, the CAB (Certification) issues a CoC.

Submit CoC to the CPSO. The CPSO will register the Controlled Goods and issue a Letter of Approval (LOA) if the information in the CoC is deemed to be in order

Upon receiving the Letter of Approval, Registered Supplier can affix SAFETY Mark to the Controlled Goods and sell it in Singapore

Note: Many CABs act as both CAB (Testing) and CAB (Certification). Many CABs (Certification) also submit CoCs to the Safety Authority on the supplier's behalf. Do check with CABs to determine their services offered.

The CAB (Certification) shall certify the Controlled Goods without re-testing unless the test report is found not to be in full compliance to the safety requirements specified in this booklet. In cases where there is/are modification(s) to the registered Controlled Goods, the Registered Supplier is required to inform the CAB (Certification) in accordance with the procedure described in [Chapter 5.5](#). The Registered Supplier is required to maintain a Technical File for each registered Controlled Goods as specified in [Chapter 7](#).

Suppliers may visit [www.consumerproductsafety.gov.sg](http://www.consumerproductsafety.gov.sg) to browse the list of CABs to send their products for testing and certification.

#### **5.4 Certificate of Conformity**

**Certificates of Conformity (CoCs)** and **Self-Declarations of Conformity (SDoCs)** are both valid for three (3) years. Registered Suppliers who wish to continue supplying their registered Controlled Goods beyond three (3) years shall initiate the renewal process before their CoC/SDoC expires, regardless of any changes to the Controlled Goods. Renewal applications may not be made after the Controlled Goods' registration expires. In such cases, a new registration supported by valid documents would be required.

All applications for renewal shall be based on the listed edition or newer edition of the safety standards in Chapter 4.1. Should the edition of the safety standards on the CoC be earlier than the listed edition, supplementary testing on the difference(s) between the old and listed/newer edition or full type-test to the listed/newer edition must be carried out. If the previous registration was based on an older edition of the standard, application for modification to upgrade to the latest minimum edition of the safety standard would be required.

Controlled Goods with expired CoCs or SDoCs can no longer be supplied to the domestic market as they are deemed as 'non-registered Controlled Goods'. Any person supplying non-registered Controlled Goods shall be guilty of an offence under Section 11(2) of the Consumer Protection (Trade Descriptions and Safety Requirements) Act (Chapter 53).

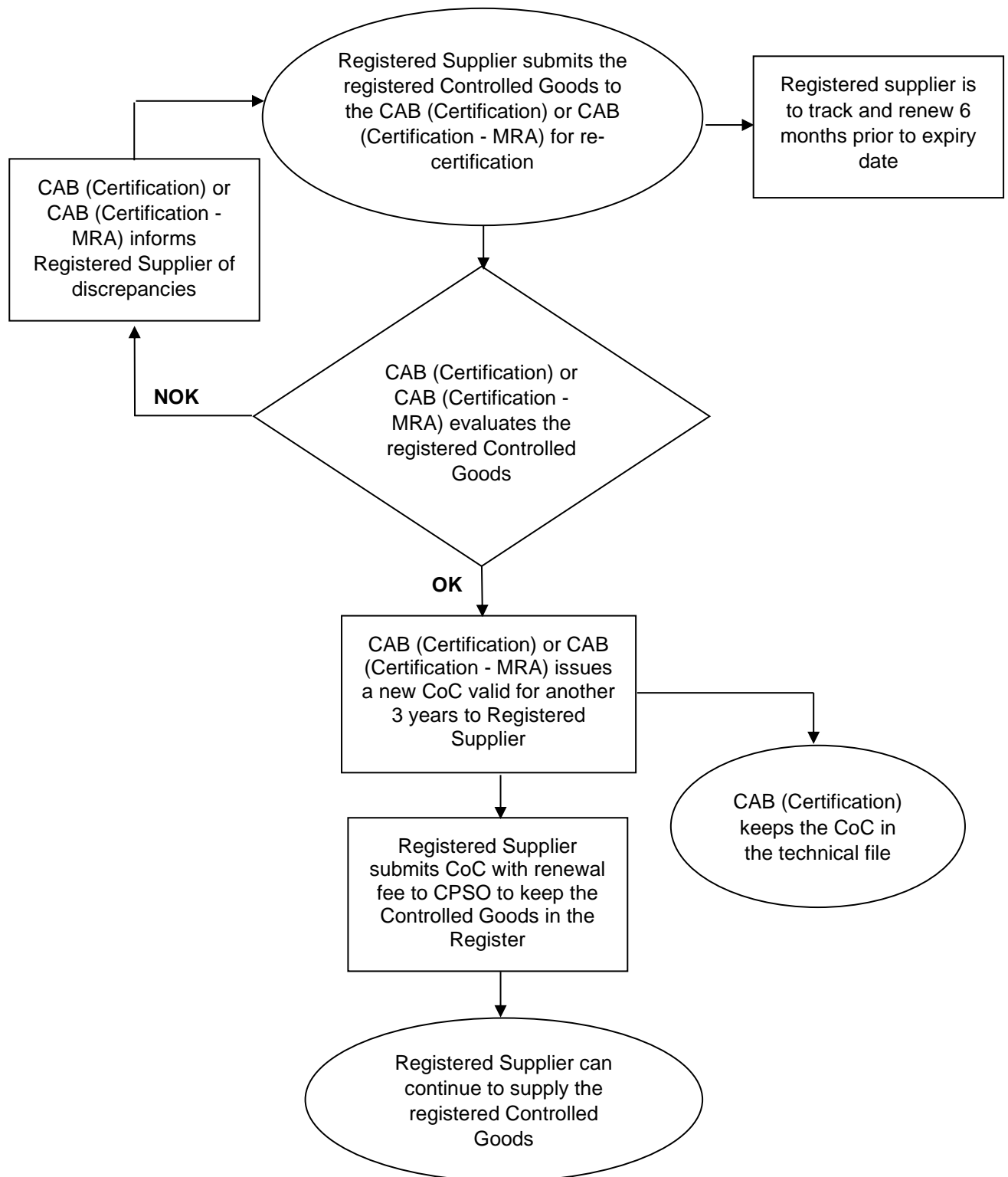
#### **Renewal of CoC**

Registered Suppliers are to submit applications for renewal to CABs (Certification) or CABs (Certification-MRA) **six months** before CoCs expire.

Suppliers should check with the CABs responsible for issuing the initial CoC for subsequent renewals.

Once the CAB (Certification) or CAB (Certification-MRA) has evaluated the submission, they will submit the new CoC with the renewal fee of \$50 (excluding GST) to the CPSO at <https://www.cpsaplus.gov.sg/Homepage/>. CABs may also levy additional charges for certification and administrative services. A flow-chart for renewal of CoC is found below:

**For Renewal of Medium and High Risk Controlled Goods (based on CoC)**



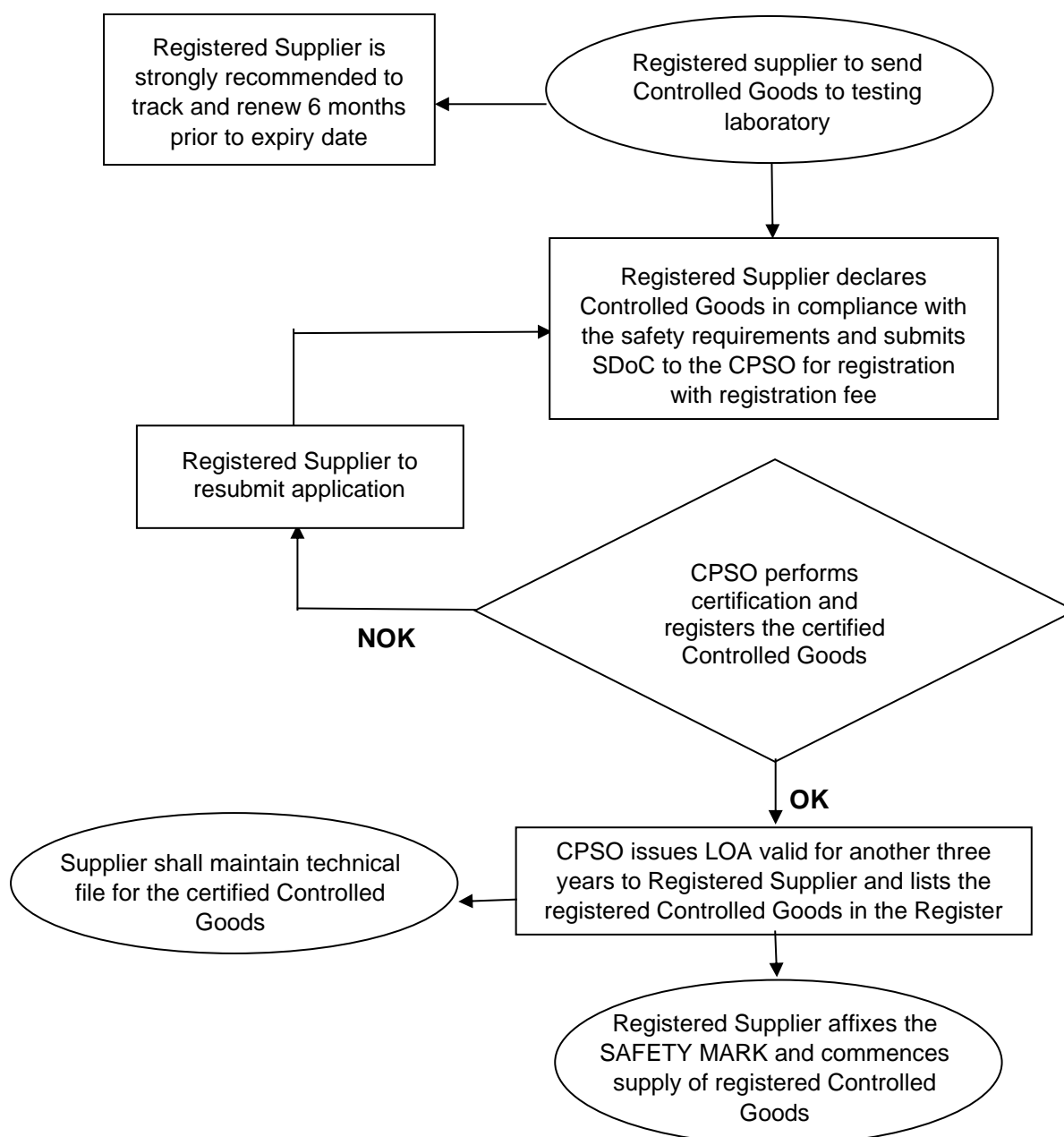


### Renewal of SDoC

Registered Suppliers are to submit applications for renewal **six months** before the expiry of SDoCs online at <https://www.cpsaplus.gov.sg/HomePage/>. Applications submitted after the expired SDoC would not be accepted for renewal. Application for new registration supported by a valid SDoC would be required for Controlled Goods with expired registrations.

A flow-chart for renewal of SDoC is found below:

#### **For Renewal of Low Risk Controlled Goods (based on SDoC)**



### **Transfer of CoCs (From Company A to Company B)**

If the business entity holding the CoC will be dissolved due to internal reorganization, and a new entity will be set up to continue supplying the Controlled Good in Singapore, there should be a transfer of CoC from the old business entity which will be dissolved (Company A) to the new business entity (Company B).

- Company B to apply as a Registered Supplier (if not already registered)
- Company B to approach CAB (Certification or Certification-MRA) who issued the CoC and apply for a new CoC with the following options:
  - a) to retain the certification number with the current expiry date; or
  - b) to apply for new certification number with 3 years expiry date
- Company A and Company B to submit any other information or document as required by CAB and/or the CPSO
- Company B to submit the new CoC to the CPSO for updating with a fee of \$50 plus GST per registration under option (a) or for registration with a fee of \$180 plus GST under option (b). The CPSO will withdraw the Controlled Good's registration from company A and reregister it under company B

### **Transfer of SDoCs (From Company A to Company B)**

- An SDoC is a self-declaration by Company A that its product conforms to relevant safety requirements, therefore transfer of SDoC between companies are not allowed. Company B will need to do its own self-declaration.

## **5.5 Modifications to Registered Controlled Goods**

Modification (including technical and non-technical changes) refers to any changes made to the registered Controlled Goods.

Examples of technical changes are:

- safety components
- new design/enclosure that affect the safety

Examples of non-technical changes are:

- colour (except for 3-pin rectangular type 13-amp plug, 3-pin round type 15-amp plug, multi-way adaptor, 3-pin portable socket-outlet, portable cable reel, RCCB, 3-pin 13-amp socket-outlet, 3-pin round type 15-amp socket-outlet and domestic electric wall switch due to different colour resin)
- graphic design
- factory location (no change in the manufacturing process)
- manufacturer's name
- trade name

- model number
- year/date of production

The Registered Suppliers may approach the CPSO to determine whether re-certification of the registered Controlled Goods is required as a result of modification.

The Registered Suppliers shall update their technical file on the registered Controlled Goods with details of the change and shall be responsible for all safety issues as a result of modifications and other changes to the registered Controlled Goods.

In a case where there is modification to the registered Controlled Goods, the following scenarios shall apply:

- 1) If the modification **does not result in a change in the model number** even though the **change is technical**:
  - i) The Controlled Goods do not have to be re-registered with the CPSO.
  - ii) The Registered Supplier only needs to submit the details of modification to the CABs (Certification) or CABs (Certification-MRA) for re-certification. For Controlled Goods that are registered based on SDoC, the Registered Supplier shall submit the details of modification to the Safety Authority.
  - iii) The Registered Supplier is to update the technical file with the test report and certification attesting that the modification still meets the safety standard requirements.
- 2) If the modification **does not result in a change in the model number** and **the change is non-technical**, which does not affect the safety of the Controlled Goods, e.g.: merely change(s) in the aesthetics that does (do) not affect the safety of the Controlled Goods:
  - i) The Controlled Goods do not have to be re-registered with the Safety Authority.
  - ii) The Controlled Goods do not have to be re-certified with the CABs (Certification) or CABs (Certification – MRA). For Controlled Goods that are registered based on SDoC, the Controlled Goods do not need to be re-certified with the Safety Authority.
  - iii) The Registered Supplier only needs to update the technical file with the modification
  - iv) The Registered Supplier shall be responsible for ensuring that the modification does not compromise the safety of the Controlled Goods.
- 3) If the modification results in a **change in the model number** and the **change is technical**:
  - i) The Controlled Goods have to be certified with the CABs (Certification) or CABs (Certification-MRA) and registered with the CPSO as per procedure indicated in Chapter 5.3

- ii) A CoC with new certification number shall be issued by CABs (Certification) or CABs (Certification-MRA).
  - iii) The Registered Supplier can affix the SAFETY Mark using the new certification number and commence supply of the registered Controlled Goods.
  - iv) The Registered Supplier shall create a new technical file.
- 4) If the modification results in a **change in the model number** even though the **change is non-technical** and does not affect the safety of the Controlled Goods:
- i) The Controlled Goods do not need to be re-registered with the CPSO. The Registered supplier is to declare clearly all the non-technical change(s) in Form – Notification of Modification to Registered Controlled Goods (refer to [link](#) for the form) and submit it to the CPSO together with the registration fee of \$180 (excluding GST) and clear photographs of the external view (i.e. showing the complete appliance); internal view (i.e. showing the safety components); rating label; mains plug, etc.
  - ii) The CAB shall edit the CoC to carry both the new and old trade name/model number of the modification once it is accepted.

### **5.6. Exemption of Controlled Goods from Registration**

Registered suppliers may apply to the CPSO to exempt a Controlled Good from registration under the CPSR, if the product is intended solely for display and/or demonstration purposes and will not be supplied to consumers.

Registered suppliers will need to download the RS05 form after logging into their Registered Supplier account (<https://www.cpsaplus.gov.sg>) or from the Consumer Product Safety Website (<https://www.consumerproductsafety.gov.sg/suppliers/cpsr/resources>) and submit it to the CPSO.

Upon approval of the exemption, an exemption letter will be issued by the CPSO to the Registered supplier.

## **6.0 SAFETY Mark**

---

### **Objective and rationale**

Marking of registered Controlled Goods will enable consumers to differentiate between registered and non-registered Controlled Goods and to participate in their enforcement. It also serves as a deterrent and a means to check for non-registered Controlled Goods in the market.

### **Marking**

All Controlled Goods registered with the CPSO must bear the SAFETY Mark before they can be supplied to the Singapore market. Registered Suppliers are responsible for ensuring that their registered Controlled Goods are affixed with the SAFETY Mark in accordance to the guidelines stipulated by the CPSO as provided for in [Appendix F](#). The CPSO will conduct spot-checks on manufacturers' / importers' / traders' warehouses when it is deemed necessary.

### **Where to apply the SAFETY Mark**

The SAFETY Mark can either be affixed on the Controlled Goods or their packaging (to be affixed in a prominent location).

### **Preparation of SAFETY Mark**

The CABs (Certification) or CABs (Certification – MRA) shall allocate certification numbers to the Registered Suppliers that have submitted Controlled Goods for the purpose of certification. For SDoC, the CPSO will allocate the certification numbers. The allocated certification numbers are to help Registered Suppliers in preparing the marking of the Controlled Goods in advance. It does not imply that the Controlled Goods have been certified by the CABs (Certification) or CABs (Certification – MRA) or registered with the CPSO. Registered Suppliers shall mark the Controlled Goods **ONLY** upon receiving the '**Letter of Approval (Appendix E)**'.

### **Certification Number**

The certification number (XXYYYY-ZZ) is a unique number issued by the CABs (Certification) or CABs (Certification – MRA) which is traceable to the Registered Suppliers and the registered Controlled Goods. The connotation of the certification number is as follows:

<b>XX</b>	<b>=</b>	<b>year of certification (e.g. 01 for year 2001)</b>
<b>YYYY</b>	<b>=</b>	<b>serial number (e.g. 1234)</b>
<b>ZZ</b>	<b>=</b>	<b>CAB identity code (e.g. 11 for CAB 'A')</b>

### **Using SAFETY Mark in Advertisements or Publicity Materials**

Please refer to [Appendix G](#) for the guidelines.

## **7.0 Technical File**

---

Every Registered Supplier in Singapore is required to maintain technical files of all their registered Controlled Goods as required in Regulation 16 of the Regulations. The contents of the technical files are specified in the table below. These files are to be maintained by the Registered Suppliers for **at least ten (10) years** from the date of expiry of the CoC or the last renewed CoC.

The maintenance of the technical files is necessary to enable the CPSO to carry out investigations in the event of a complaint, incident or accident. Regulation 16 also requires that upon receiving any request by the CPSO, the Registered Suppliers must provide the relevant technical files to the CPSO within **seven (7) calendar days**.

In addition, the Registered Suppliers shall be responsible for the regular updating of the technical files especially if there have been modifications made to the registered Controlled Goods. Supplementary testing and certification are required if there are modifications with safety implications.

**List of documents to be included the Technical File**

No.	Type of Document
1	<b>Acknowledgement Receipt for Certificate of Conformity [also known as Letter of Approval (LOA)]</b>
2	<b>Certificate of Conformity</b> (in English version <u>only</u> )
3	<b>Test Reports including its Test Certificates (if applicable)</b> (in English version <u>only</u> )
4	<b>Full Electrical Wiring/Circuit Diagram or Service Manual (contains the electrical wiring/circuit diagram)</b> (Circuit diagram must indicate the component's values, or alternatively, be supported with Bill of Material/Part List.)
5	<b>Technical/Constructional Drawing for gas products</b>
6	<b>Photographs</b> showing exterior (whole, front, top and rear view of Controlled Goods, nameplate, rating label, mains plug, etc.) and interior (critical safety components) views. Polaroid photographs as well as photocopies (in black and white) are <u>not</u> acceptable.
7	Photographs for similar/derived models must also be kept together with the photographs of the basic model.
8	<b>Rating Label</b> (if it is not clear in the photograph) To provide an original or clear photograph or artwork.
9	<b>User's Instruction Manual</b> (English version must be included)
10	<b>Record of Modification</b> , if any

**Note:**

Registered Suppliers are to maintain the testing results of every registered Controlled Goods. The testing results may be of help to determine whether the fault occurring in an incident or accident is attributed to a single product or a single batch.

## **Appendix A - Definitions**

**Authority** means the Consumer Product Safety Office (CPSO), an office overseen by Enterprise Singapore that oversees the implementation of consumer product safety laws including the Consumer Protection (Consumer Goods Safety Requirements) Regulations 2011 (CGSR) and Consumer Protection (Safety Requirements) Regulations (CPSR).

**CAB** means Conformity Assessment Body that conducts Conformity assessment for Controlled Goods.

**CAB (Certification)** means CAB that is designated by the CPSO, to issue CoCs for products or Controlled Goods supplied in Singapore, as specified in the First Schedule to the Consumer Protection (Safety Requirements) Regulations and/or overseas partners' scheme.

**CAB (Certification – MRA)** means CAB that is located in the MRA partner country and is designated by the Designating Authority of the MRA partner to issue COC.

**CAB (Testing)** means testing body that is designated by the CPSO to perform testing for products or Controlled Goods supplied in Singapore, as specified in the First schedule to the Consumer Protection (Safety Requirements) Regulations and/or overseas partners' scheme.

**CAB (Testing– MRA)** means testing body CAB designated by overseas MRA partners to perform testing for products or Controlled Goods supplied in Singapore, as specified in the First schedule to the Consumer Protection (Safety Requirements) Regulations.

**COC** means Certificate of Conformity issued by either CAB (Certification) or CAB (Certification-MRA).

**Controlled Goods** means any goods of a type, class or description specified in the First Schedule of the Consumer Protection (Safety Requirements) Regulations.

**MRA** means a Mutual Recognition Agreement or Arrangement between Singapore and any other country/customs territory.

**LOA** means Letter of Approval issued by the CPSO.

**Registered Controlled Goods** means any Controlled Goods registered with the CPSO under Regulation 7 of the of the Consumer Protection (Safety Requirements) Regulations.



**Safety Authority** means the Enterprise Singapore Board (Enterprise Singapore) (formerly known as Standards, Productivity and Innovation Board) established under Section 3 of the Enterprise Singapore Board Act 2018.

**SAFETY Mark** means the SAFETY Mark specified in the Second Schedule of the Consumer Protection (Safety Requirements) Regulations.

**SDoC** means Supplier's Declaration of Conformity. It is a declaration by the Registered Supplier that the controlled goods conform to the safety requirements specified by the CPSO for the Controlled Goods.

**IEC** means the International Electrotechnical Commission.

**SS** means Singapore Standard.

**GST** means Goods & Services Tax.

## Appendix B - Examples of Controlled Goods

The following are some examples of Controlled Goods. The examples are by no means exhaustive and therefore, products not listed here do not mean they are not Controlled Goods. The detailed definitions of Controlled Goods are stated on Chapter 4.1 of this Information Booklet. If you are uncertain whether your product falls within the definitions of Controlled Goods, you may contact us at **6898 1800** or **consumerproductsafety@enterprisesg.gov.sg** for clarification.

<b>Cooking Range</b> <ul style="list-style-type: none"> <li>Built-in Electric Hob</li> <li>Free-standing Electric Oven</li> <li>Built-in Electric Oven</li> <li>Built-in Electric Grill</li> <li>Built-in Electric Steam Oven</li> <li>Built-in Electric Induction Hob</li> <li>Built-in Deep Fat Fryer</li> </ul>	<b>Washing Machine</b> <ul style="list-style-type: none"> <li>Top-loading Washing Machine</li> <li>Front-loading Washing Machine</li> <li>Twin-tub Washing Machine</li> <li>Washer cum Dryer</li> </ul>
<b>Iron</b> <ul style="list-style-type: none"> <li>Dry Iron</li> <li>Steam Iron</li> <li>Traveller Iron</li> <li>Iron with Steam Generator/Boiler</li> </ul>	<b>Adaptor</b> <ul style="list-style-type: none"> <li>AC-DC/AC-AC Adaptor</li> <li>Multi-voltage AC Adaptor</li> <li>Power AC Adaptor</li> <li>Breast pump Adaptor</li> </ul>
<b>Hair care appliances</b> <ul style="list-style-type: none"> <li>Hand-held Hairdryer</li> <li>Wall-mounted Hairdryer</li> <li>Wall-mounted Hairdryer with Shaver Unit</li> <li>Hair curlers, hair straighteners and hair stylers</li> <li>Bladeless hairdryer</li> </ul>	<b>Toaster, Grill, Roaster, Hot Plate, Deep Fat Fryer, Wok and Similar Appliances</b> <ul style="list-style-type: none"> <li>Toaster Oven</li> <li>Electric Barbeque Grill</li> <li>Hot-plate</li> <li>Sandwich Maker</li> <li>Waffle Maker</li> <li>Hot-plate with Steam Boat</li> <li>Deep Fat Fryer</li> <li>Bread Toaster</li> <li>Electric Wok</li> <li>Air Fryer</li> </ul>
<b>Microwave Oven</b> <ul style="list-style-type: none"> <li>Microwave Oven</li> <li>Microwave Oven with Grill</li> </ul>	<b>Fans</b> <ul style="list-style-type: none"> <li>Wall Fan</li> <li>Cycle Fan</li> <li>Ceiling Fan</li> <li>Table/Desk Fan</li> <li>Floor/Standing Fan</li> <li>Box Fan</li> <li>Tower Fan</li> <li>Clip-on Fan</li> <li>Air Circulator</li> <li>Bladeless Fan</li> </ul>

<b>Audio and Video products</b> <ul style="list-style-type: none"> <li>• High-Fidelity Set</li> <li>• CD-Rom Video game</li> <li>• DVD Video Recorder</li> <li>• Hi-Fi System</li> <li>• AV Receiver</li> <li>• CD Player</li> <li>• Tuner</li> <li>• Amplifier</li> <li>• Equalizer</li> <li>• Karaoke Mixer</li> <li>• Surround Processor</li> <li>• Turntable</li> <li>• Minidisc Recorder</li> <li>• Active Subwoofer</li> <li>• Cassette Tape Deck</li> <li>• Home Theatre System</li> <li>• Television/Video display unit</li> <li>• Portable/clock radio</li> </ul>	<b>Coffee Maker, Slow Cooker, Steam Boat and Similar Appliances</b> <ul style="list-style-type: none"> <li>• Coffee Maker</li> <li>• Coffee Maker cum Grinder</li> <li>• Slow Cooker</li> <li>• Steam Boat</li> <li>• Pressure cooker</li> <li>• Food Steamer</li> <li>• Soybean Milk Maker</li> <li>• Electric Medicine Pot</li> <li>• Stewing Pot</li> <li>• Soup warmer</li> </ul>
<b>Room Air-Conditioner</b> <ul style="list-style-type: none"> <li>• Window Room Air-conditioner</li> <li>• Vertical Room Air-conditioner</li> </ul>	<b>Mixer, Blender, Mincer and Similar Appliances</b> <ul style="list-style-type: none"> <li>• Juice Extractor</li> <li>• Food Slicer</li> <li>• Food Mixer</li> <li>• Blender</li> <li>• Food Processor</li> <li>• Food Chopper</li> </ul>
<b>Liquid Heating Appliances</b> <ul style="list-style-type: none"> <li>• Jug Kettle</li> <li>• Water Dispenser with Hot/Warm Water</li> <li>• Airpot</li> <li>• Cordless Kettle/Jug</li> </ul>	<b>Decorative Lighting Fixture</b> <ul style="list-style-type: none"> <li>• Decorative Lighting Chain</li> <li>• Christmas Tree Lighting</li> <li>• LED lighting</li> </ul>
<b>Vacuum Cleaner</b> <ul style="list-style-type: none"> <li>• Vacuum Cleaner</li> <li>• Wet / Dry Vacuum Cleaner</li> <li>• Vacuum Cleaner with Steam Generator</li> </ul>	<b>Gas Canister</b> <ul style="list-style-type: none"> <li>• Gas Canister (for use with portable gas cooker)</li> </ul>
<b>Switch</b> <ul style="list-style-type: none"> <li>• Domestic electric wall switch with weather-proof cover</li> </ul>	<b>Socket Outlet</b> <ul style="list-style-type: none"> <li>• 3-pin 13-amp socket-outlet with weather-proof cover</li> <li>• 3-pin round type 15-amp socket-outlet with weather-proof cover</li> </ul>

<p><b>Home Computer System</b></p> <ul style="list-style-type: none"> <li>• CRT Computer Monitor</li> <li>• LCD Display/Monitor</li> <li>• Printer</li> <li>• Plotter</li> <li>• Personal Computer (CPU)</li> <li>• Multimedia Active Speaker*</li> <li>• External drive</li> <li>• Internal set-top box</li> <li>• Scanner</li> <li>• Docking station</li> <li>• Notebook Computer*</li> <li>• Multimedia projector</li> <li>• Power line</li> <li>• Communication equipment</li> </ul> <p><i>*Applicable to mains operated only</i></p>	<p><b>Table/Standing Lamp</b></p> <ul style="list-style-type: none"> <li>• LED table lamp</li> </ul> <p><b>Lamp Control Gear</b></p> <ul style="list-style-type: none"> <li>• Ballast (Electronic / Magnetic type)</li> <li>• LED Driver</li> </ul>
---	---

## Appendix C - Examples of Non-Controlled Goods

The following are some examples of products that are currently not in the list of Controlled Goods and therefore deemed as non-Controlled Goods under the Consumer Protection (Safety Requirements) Regulations. However, these non-Controlled Goods may be under the purview of other regulatory authorities. The products listed here are meant for reference only and it is non-exhaustive. It does not mean that they cannot be included as Controlled Goods in the future. The detailed definitions of Controlled Goods are stated on Chapter 4.1 of this Information Booklet.

Meanwhile, the onus of ensuring that these products and their accessories are safe rest with you and this advice is given without prejudice to any amendments to the Consumer Protection Act, its Regulations or the List of Controlled Goods.

<ul style="list-style-type: none"> <li>• Air cleaner / Air purifier / Air steriliser / Air ioniser / Air humidifier</li> <li>• Altar lamp</li> <li>• Baby food warmer</li> <li>• Baby milk bottle steriliser</li> <li>• Battery</li> <li>• Bread maker</li> <li>• Battery charger</li> <li>• Body massager</li> <li>• Bulb / Fluorescent lamp</li> <li>• Cathode ray tube television receiver</li> <li>• Camping stove/non re-usable gas canister</li> <li>• Can opener</li> <li>• Car audio</li> <li>• Coffee grinder</li> <li>• Commercial LPG system</li> <li>• Cooker hood</li> <li>• Cloth steamer</li> <li>• Chest/standing freezer</li> <li>• Car vacuum cleaner</li> <li>• Centrally operated vacuum cleaner system</li> <li>• Components used in PCs</li> <li>• Cup warmer</li> <li>• Clothes dryer</li> <li>• Dishwasher</li> <li>• DC operated vacuum cleaner/Cordless vacuum cleaner</li> <li>• Dehumidifier</li> <li>• Energy saving device</li> <li>• Electric ice crusher</li> <li>• Electronic disinfectant</li> <li>• Electronic type-writer</li> </ul>	<ul style="list-style-type: none"> <li>• Ice-cream maker</li> <li>• Insect/Mosquito killer</li> <li>• Immersion water heater</li> <li>• Juke box</li> <li>• Light bulb</li> <li>• Multiway adaptor with solely 2-pin socket-outlet</li> <li>• Massage chair (mains operated)</li> <li>• Milk froth maker</li> <li>• Portable misting fog fan</li> <li>• Mobile split air conditioner</li> <li>• Night light</li> <li>• Portable television operates on battery supply only (e.g., car battery)</li> <li>• Portable single unit air-conditioner</li> <li>• Portable socket-outlet with solely 2-pin socket-outlet</li> <li>• Portable cable reel for industrial use</li> <li>• Popcorn maker</li> <li>• SPA machine</li> <li>• Steam steriliser</li> <li>• Steam cleaner</li> <li>• Security alarm system</li> <li>• Socket for fluorescent lamp</li> <li>• Starter socket</li> <li>• Split system air-conditioner (fixed)</li> <li>• Solar cooker (using high intensity light bulbs)</li> <li>• Solar storage water heater</li> <li>• Trouser press</li> <li>• Tumbler dryer (clothes dryer)</li> <li>• Uninterrupted power supply (UPS)</li> <li>• Wall USB outlet</li> </ul>
--	--

<ul style="list-style-type: none"><li>• Electronic wall-switch</li><li>• Electric chocolate maker</li><li>• Facial steamer</li><li>• Foot massager</li><li>• Fluorescent tube</li><li>• Fax machine/Photocopying machine (not link to personal computer)</li><li>• Food dehydrator</li><li>• Glue gun</li><li>• Hand dryer</li></ul>	<ul style="list-style-type: none"><li>• Vending machine</li><li>• Ventilation fan / Exhaust fan</li><li>• Video cassette rewinder</li><li>• Video cassette recorder</li><li>• Security video recorder</li><li>• Water distiller</li><li>• Wine cooler</li><li>• Wet grinder (e.g. peanut grinder)</li></ul>
--	---

**Important Note:**

Most of the above listed non-Controlled Goods are regulated under the Consumer Protection (Consumer Goods Safety Requirements) Regulations 2011 (CGSR) effected from 1 April 2011. For information on CGSR, please refer to 'Consumer Protection (Consumer Goods Safety Requirements) Regulations 2011 Information Booklet which is available at <https://www.consumerproductsafety.gov.sg/suppliers/cgsr/resources>.

## Appendix D – Certificate of Conformity

### CONSUMER PROTECTION

#### (SAFETY REQUIREMENTS) REGULATIONS

#### Certificate of Conformity (CoC)



CAB (Certification)'s or CAB (Certification – MRA)'s Letter Head

To: RS Identity Code  
Registered Supplier

Date of Certification : \_\_\_\_\_  
Date of Re-certification : \_\_\_\_\_  
Date of Expiry : \_\_\_\_\_  
Certificate Number : \_\_\_\_\_

Dear Sir/Madam,

We certify that the following Controlled Goods complied with the Mandatory Requirements of the Consumer Protection (Safety Requirements) Regulations:

Description of Controlled Goods: \_\_\_\_\_  
\_\_\_\_\_

Trade Name: \_\_\_\_\_

Model Number: \_\_\_\_\_

Country/Region where Controlled Goods are likely to be manufactured: \_\_\_\_\_

Test report number: \_\_\_\_\_

Testing laboratory: \_\_\_\_\_

Tested according to: \_\_\_\_\_

\_\_\_\_\_  
CAB  
Certifying Officer

#### Important Notice:

No Controlled Goods can be supplied in Singapore unless they are registered with the Consumer Product Safety Office (CPSO). Please access <https://www.cpsaplus.gov.sg/Homepage/> for registration procedure.

## **Appendix E – Letter of Approval**

---

**CONSUMER PROTECTION  
(SAFETY REQUIREMENTS) REGULATIONS**

**Letter of Approval**

---

To: Registered Supplier

Date of registration: \_\_\_\_\_

Dear Sir/Madam,

We acknowledge receipt of Certificate of Conformity,

Certificate Number: \_\_\_\_\_,

for registration of Controlled Goods, \_\_\_\_\_

Trade Name: \_\_\_\_\_

Model Number: \_\_\_\_\_

and would like to confirm that the Controlled Goods are entered into the Register of Registered Controlled Goods, pursuant to the Consumer Protection (Safety Requirements) Regulations.

\_\_\_\_\_  
*Consumer Product Safety Office*

---



## **Appendix F - Guidelines for Using Safety Mark on Registered Controlled Goods**

The SAFETY Mark comprises of a safety logo enclosed in a square on the left and the word “SAFETY MARK” enclosed in a rectangle on the right. Below the logo is a unique certification number traceable to the registrant. The colour used is Pantone 032C.



### **1) SAFETY Mark without Contrasting Background (e.g. embossed on body of Controlled Goods)**

The safety logo, letters and certification number shall be of raised or lowered depth of not less than 0.51 mm.

The SAFETY Mark (consisting of both the safety logo and the word “SAFETY MARK”) shall have a height of not less than 9.5 mm. The certification number shall have a height of not less than 2.8 mm.

Any SAFETY Mark with dimension smaller than the above has to be approved by the CPSO.

### **2) SAFETY Mark with Contrasting Background (e.g. silk screened on body of Controlled Goods or printed on rating labels or carton boxes or as standalone adhesive labels)**

The SAFETY Mark (consisting of both the safety logo and the word “SAFETY MARK”) shall have a height of not less than 6.0 mm. The certification number shall have a height of not less than 1.6 mm.

Any SAFETY Mark with dimension smaller than the above has to be approved by the CPSO.

### **3) Points for adherence**

- i. The SAFETY Mark shall be fully reproduced with the safety logo enclosed in a square on the left, the word “SAFETY MARK” enclosed in a rectangle on the right and the certification number traceable to the registrant across the bottom.
- ii. The SAFETY Mark can be embossed or silk screened on any coloured material or printed with the same colour used for rating labels or carton box markings. When

printed as standalone adhesive labels, the colour of the safety logo, the background for the word “SAFETY MARK” and the certification number is Pantone 032C.

- iii. The SAFETY Mark shall be easily discernible on the Controlled Goods.
- iv. The SAFETY Mark shall be indelible and legible. The marking shall not be removed when rubbed lightly with a piece of cloth soaked with petroleum, spirit or water.
- v. Rating labels or standalone adhesive labels with the SAFETY Mark shall not come loose or curled at the edges.
- vi. Please refer to the bromide provided by the CPSO for size relationship between the safety logo and the word “SAFETY MARK”. They could be enlarged or reduced proportionately and still meet the size requirements stipulated in point (1) and (2), depending on whether the background is non-contrasting or contrasting.

***Compliance is checked by visual inspection as well as the test mentioned in above paragraph (iv).***

#### **4) SAFETY Mark on AC Adaptors**

For **AC Adaptors** (to be used with other products), registration is granted for the adaptors only and does not cover the other products. Therefore, only the adaptors should be affixed with the SAFETY Mark.

However, if the packaging containing both the AC Adaptors and other products is to be affixed with the SAFETY Mark, then the statement “**This SAFETY Mark applies to the AC Adaptor only**” has to be printed near the SAFETY Mark.

#### **5) SAFETY Mark on 3-Pin Mains Plugs**

For **3-pin mains plug** (13 and 15 Amperes), the SAFETY Mark must carry the statement ‘**for mains plug**’ below the certification number.



**(for mains plug)**

**6) SAFETY Mark on 3-Pin Portable Socket-Outlet and Portable Cable Reel**

For **3-pin portable socket-outlet** and **portable cable reel**, the SAFETY Mark must carry the statement ‘**for 3-pin portable socket-outlet**’ or “**for portable cable reel**” respectively below the certification number.



**1 2 3 4 5 6 - 0 0**

**(for 3-pin portable socket-outlet)**



**1 2 3 4 5 6 - 0 0**

**(for portable cable reel)**

**7) SAFETY Mark on Residual Current Circuit Breaker (RCCB), Mains Socket Outlet, Domestic Electric Wall Switch, Lamp Control Gears and Isolating Transformer for Downlight Fitting**

These five categories of Controlled Goods which are part of the electrical installations are required to have the SAFETY Mark prominently affixed on the products to assist both consumers and electrical installation inspectors in identifying registered Controlled Goods.

**8) Displaying of Registered Controlled Goods at Retail Outlets**

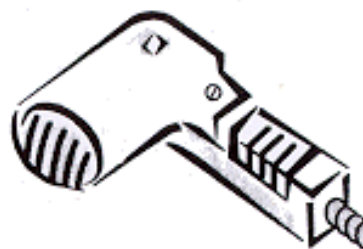
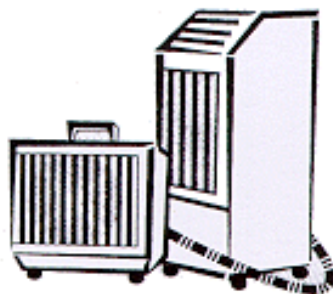
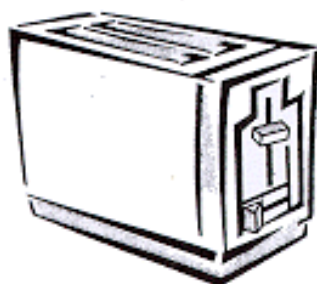
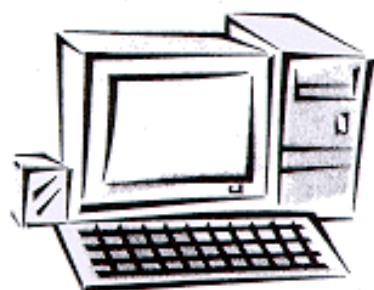
To assist consumers in identifying registered Controlled Goods, Registered Suppliers are required to display the SAFETY Mark prominently on the front of all display sets in retail outlets.

## **Appendix G - Guidelines for Using Safety Mark in Advertisements or Publicity Materials**

- 1) The SAFETY Mark shall be used for products registered under the Consumer Protection (Safety Requirements) Regulations.
- 2) The SAFETY Mark is only complete with the respective certification number. When used in advertisements, the SAFETY Mark with the certification number for each registered model should be used if there is more than one model advertised. If there is a space constraint, a single SAFETY Mark may be used.
- 3) The following statement may be used with the SAFETY Mark:
  - i. “The product (state the name and model no.) has been type-tested and considered to be in compliance with the safety requirements of the Standard (state the standard) and hence registered and entered into the Register of Registered Controlled Goods, (under pursuant to) the Consumer Protection (Safety Requirements) Regulations 2002. The registration is NOT an endorsement of the quality control system of the manufacturing process”.
  - ii. “Look for the SAFETY Mark”
  - iii. “Insist on the SAFETY Mark”
  - iv. “Safe Home with the SAFETY Mark”
- 4) Statements like “approved by XXX”, “XXX-tested safe for use”, “XXX-certified” should NOT be used. Use of such statements is misleading because the scheme only requires one sample of the said model to be type-tested.
- 5) Any statement referring to the Consumer Protection (Safety Requirements) Regulations or the SAFETY Mark, other than those stated in Paragraph iii) above should be sent to the CPSO for vetting before publication. For any enquiries, please contact us at 6898 1800 or Email: [consumerproductsafety@enterprisesg.gov.sg](mailto:consumerproductsafety@enterprisesg.gov.sg)

# CONSUMER PRODUCT SAFETY OFFICE

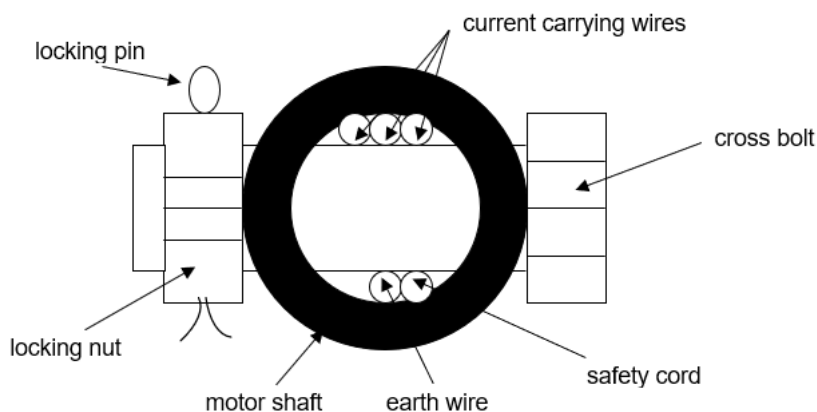
## EXAMPLE



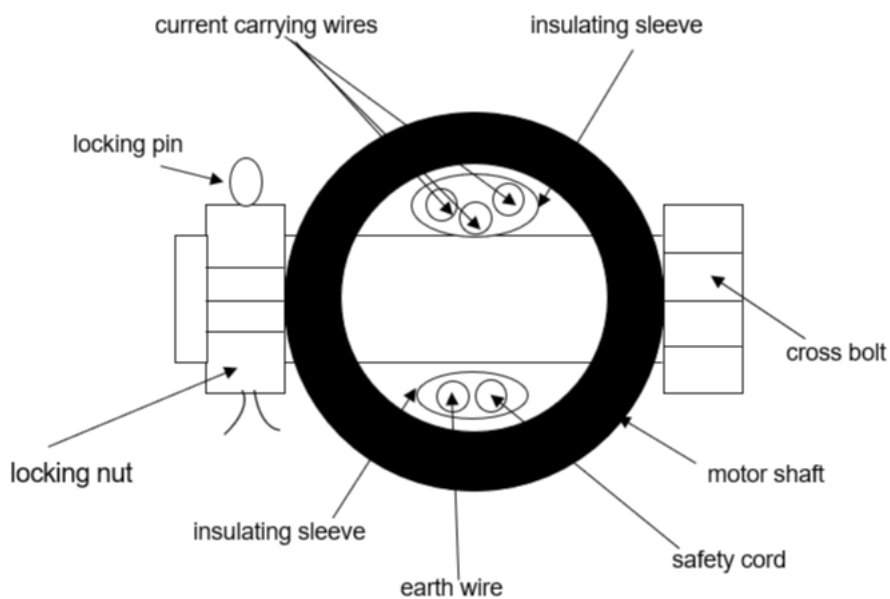
**Safe Home with the SAFETY Mark**



**Appendix H - Drawings Showing Acceptable and Not Acceptable Fan  
Motor Shaft for Decorative Ceiling Fan**

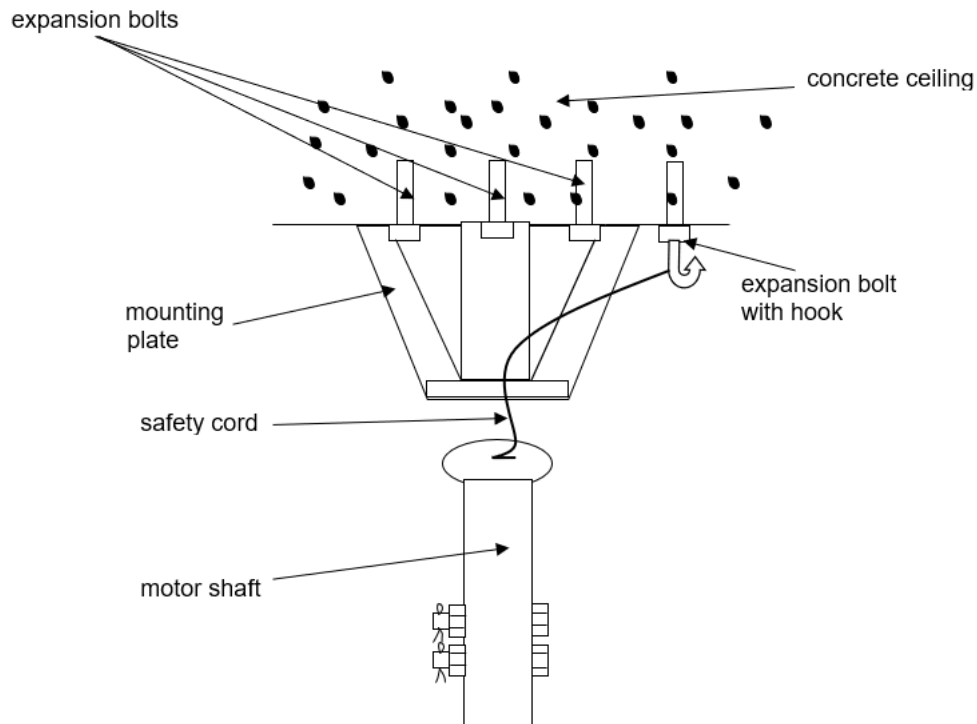


**Figure A: Not Acceptable (wires under stress)**

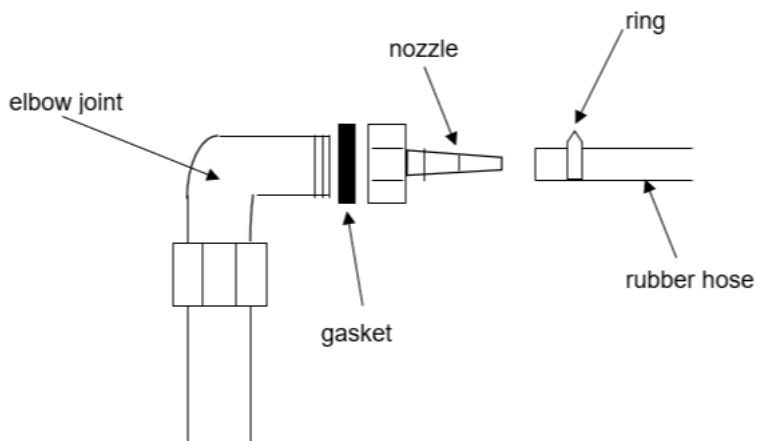


**Figure B: Acceptable (wires not under stress)**

**Appendix I - Diagram Showing the 3 Expansion Bolts, Safety Cord,  
Expansion Bolts with Hook and Mounting Plate of Ceiling Fan**



## Appendix J - Installation Instructions for Fixing Gas Cooker Elbow Joint



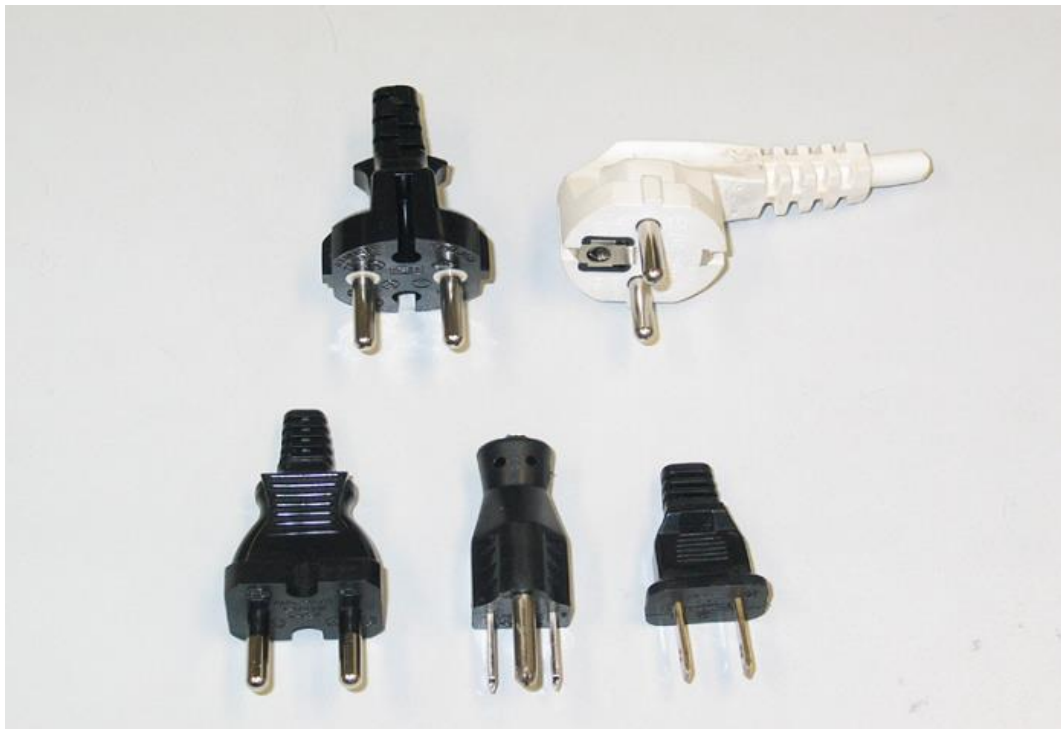
The gasket depicted above is to prevent gas leakage. After installation, turn on the gas supply and use soap solution (never use naked flame) to check for gas leakage.



**Appendix K - Examples of 2-Pin Mains Plug in Accordance To EN 50075**



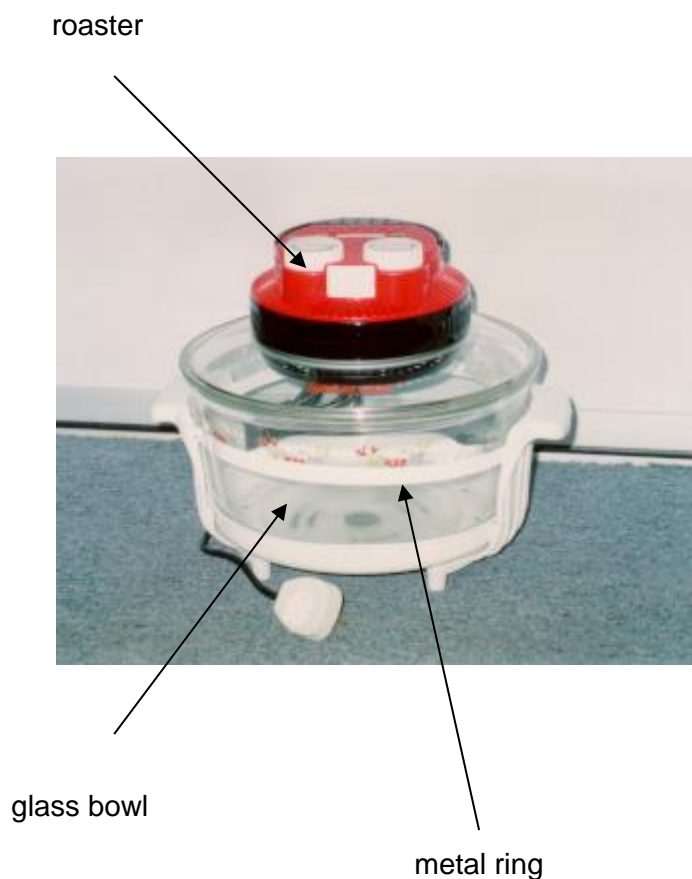
**Appendix L - Examples of Non-Acceptable Mains Plugs**



**Appendix M - Examples of 2-Pin And 3-Pin AC Adaptors**



**Appendix N - Diagram Showing a Metal Ring Around Glass Bowl Used  
with Roaster**



**Note:**

- If supplier has other method to prevent the roaster from falling off in case of the glass bowl shattered, please seek approval from the CPSO.
- This requirement is not applicable to roaster that is provided with metal bowl.

## Appendix O - Specifications of Gases Distributed in Singapore for Domestic Gas Appliances

Town Gas Source: City Energy Pte Ltd

### Town Gas Specification:

The typical properties of gas manufactured by City Energy Pte Ltd are as follows:

1	Gas Type	Group 5
2	Specific Gravity	0.50 – 0.59
3	Gross Calorific Value	18.63 MJ/m <sup>3</sup> ± 3% @ 288.75 K & 101 kPa
4	Wobbe Index	23.15 – 26.35 MJ/m <sup>3</sup>
5	Weaver Flame Speed	32 - 42
6	Stoichiometric Combustion Air	4.4 vol / vol of gas
7	Limits of flammability	3-0 – 55% of gas in air
8	Carbon Monoxide	6% vol (max)
9	Ignition Temperature	>400 °C
10	Theoretical Flame Temperature	~2000 °C

### Typical Town Gas Composition:

The following list the individual components in the piped-gas. During normal operations, the expected variations are given as low and a high range. This list is intended to be a guide where specific and technical information is required.

<u>Components</u>	<u>Volume %</u>	
	<u>Typical</u>	<u>Range</u>
Hydrogen	49.5	41 - 65
Methane	26.7	4 - 33
Ethane	1.3	0 - 2.6
Propane	0.1	0 - 1.3
Butane	0.2	0 - 1.7
Pentane	0.4	0 - 5
Carbon Monoxide	3.2	2 - 6
Carbon Dioxide	13.2	9 - 20
Nitrogen	4.5	2 - 10
Oxygen	0.9	0.5 - 2.5

Gas supply pressure: Between 10 mbars and 20 mbars (inclusive of both pressures) measured at the outlet of the gas service isolation valve.

All equipment designed for use with town gas must operate on a minimum supply pressure of 63mm water gauge.

(Please note that the gas pressure at the appliance level may be different from gas service isolation valve.)

# CONSUMER PRODUCT SAFETY OFFICE

## LPG Specification:

Volume Composition %		Gross calorific value MJ/m <sup>3</sup>	Wobbe index MJ/m <sup>3</sup>	Specific gravity (air=1)	Flame speed factor (H <sub>2</sub> =100)	Supply Pressure		
						Min.	Nom.	Max.
Butane	66-67	116.76± 1%	83.8-84.6	1.893- 1.935	16.01	20	29	35
Propane	26-34							

## **Appendix P - Controlled Goods Subject to Additional Requirements by Other Agency(ies) in Singapore**

The information on this page is to inform all relevant suppliers of **air-conditioners** and **refrigerators** on the endorsed restriction on the use of HC refrigerants in Singapore by the Singapore Civil Defence Force (SCDF).

While we recognise that HC refrigerants have an edge over some other refrigerants in terms of their environmental impact, the main consideration is that HC refrigerant is extremely flammable and would pose a potential safety hazard to users and occupants. These are additional risks which can be avoided if safer alternative refrigerants or other refrigerant blends are used. Notwithstanding the restriction on certain applications, SCDF, together with the CPSO would continue to monitor the market for emerging alternatives to HC refrigerants that could better address the safety, environmental and economic concerns.

Refrigerators and Air-conditioners for use domestically which are currently classified as Controlled Goods are allowed to use HC refrigerants under the Consumer Protection (Safety Requirements) Regulations (CPSR). Details are highlighted in the table below:

### **Policy Recommendations on Usage of Hydrocarbon Refrigerant**

Product Category	Detail on restriction on HC usage
Domestic refrigerators and air-conditioners  (eg. Stand-Alone and wall mounted air-con units)	To allow the use of HC refrigerant for domestic refrigerators subject to a charge weight cap of 150g of HC refrigerant and the refrigerant must be hermetically sealed within the refrigerator (reference from IEC 60335-2-24) and safety requirement under the Consumer Protection (Safety Requirements) Regulations (CPSR).  Advisory label requirements on domestic refrigerators  To allow the use of HC refrigerant in air-conditioners subject to safety requirement under the CPSR (e.g., Non-drop-in <sup>1</sup> unit Mobile split air-conditioner, Room air-conditioner)

Suppliers are to refer to the Circular on the Implementation of Advisory Label for Domestic Refrigerators Using Flammable Refrigerant in Singapore on the advisory label guidelines. Details of the circular can be found [here](#).

<sup>1</sup> Drop-in replacements refer to the direct replacement of refrigerant in existing equipment or application with alternative refrigerant, without modifying the operating specifications and design of the equipment or application.

## Appendix Q - Summary of Updates

No.	Chapter	Changelog (only main changes will be highlighted)
1.	N/A	<p>Updated the office overseeing the Consumer Protection (Safety Requirements) Regulations (CPSR) as the Consumer Product Safety Office (CPSO)</p> <p>Updated website for CPSR to <a href="http://www.consumerproductsafety.gov.sg">www.consumerproductsafety.gov.sg</a></p> <p>Removed instructions for submitting of hardcopy form for registration as registered supplier and provided instructions for online registration</p>
2.	Chapter 4	<p>Updated requirement that Controlled Goods having an enclosure shaped/decorated like a toy shall not be allowed for registration, as this requirement is already addressed in the relevant safety standards</p> <p>Updated additional requirements for 3-pin 13-amp socket outlet incorporated with type C USB port(s) or 3-pin portable socket-outlet incorporated with type C USB port(s) to compliance with SS 145 - 2: 2018 with Annex I.3 to avoid overlapping regulatory requirements</p> <p>Clarified that Toughened glass gas hobs tested to EN 30-1-1 can choose to comply with sub-clauses 2.1.16(a), 2.1.17, 2.1.19, 2.10.8.3(e), 2.11.3(g)</p>
3.	Chapter 5	Updated process for updating change in particulars of registered supplier online
4.	Appendix A	Provided a list of definitions for terms commonly used with regards to the Consumer Protection (Safety Requirements) Regulations (CPSR)
5.	Chapter 4 (Updated 23/07/21)	<p>Added new requirements to test standards for high-risk Controlled Goods with effect from 13 July 2022 (chapter 4.1)</p> <p>Updated additional requirements no. 33 on Toughened Glass Gas Hob (Chapter 4.2)</p> <ol style="list-style-type: none"> <li>1. Test to AS 5263.1.1.2016 - applicable until 12 July 2022 (inclusive)</li> <li>2. Test to AS 5263.1.1.2020 - newly added section</li> </ol>
6.	Chapters 4 and 5.6 (Updated 13/07/22)	<p>Added new requirements to test standards for medium-risk Controlled Goods with effect from 1<sup>st</sup> June 2024/2025 (chapter 4.1)</p> <p>Updated additional requirements no. 19, 24, 41, 45 and 46 to include new editions of existing test standard requirements (chapter 4.2)</p> <p>Added 'Exemption of Controlled Goods from Registration' (chapter 5.6)</p>

**- End of Information Booklet -**