

# Creating and Cutting a Contour Outline

For use with  
Inkscape & SignCut

# Table of Contents

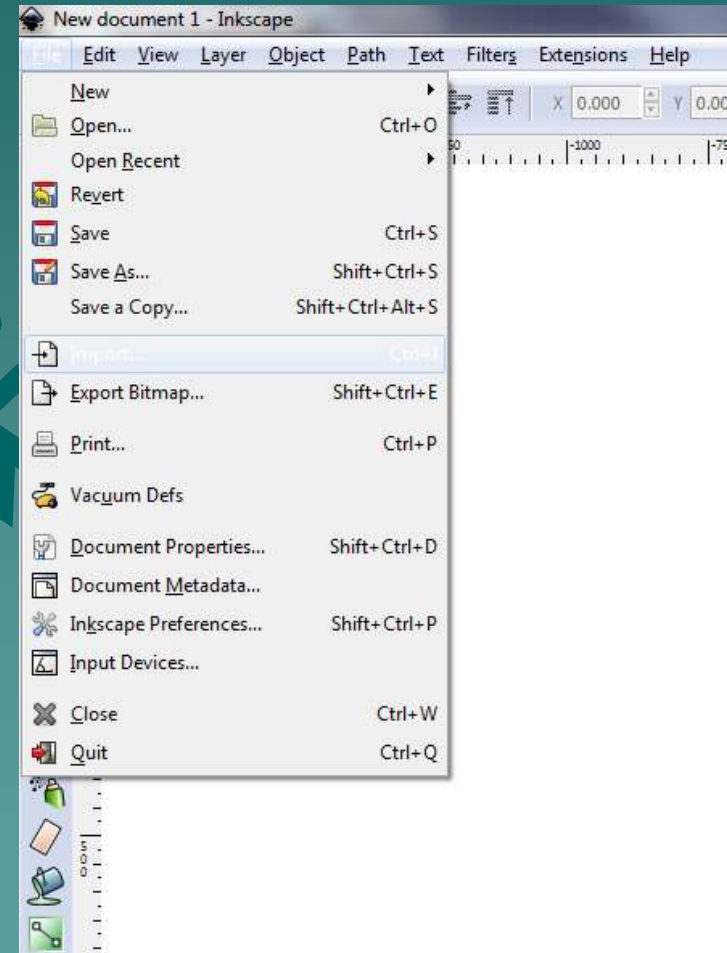
- ◆ 1. Creating Outline
- ◆ 2. Outline Clean Up
- ◆ 3. Finishing & Saving
- ◆ 4. Adding Registration Marks
- ◆ 5. Cutting Contour

# Proper Images

- ◆ In order for image outlines to work, the image must be in a *vectorized format*.
- ◆ JPG, BMP and other pixel based image formats cannot be outlined until they are *vectorized*.
- ◆ Further instructions for *vectorizing* are available on our support page at: <http://www.cutterpros.com/downloads/>
- ◆ This tutorial was written using Inkscape version .48.1.
- ◆ For more information on this program or to update your current version, go to <http://www.inkscape.org>

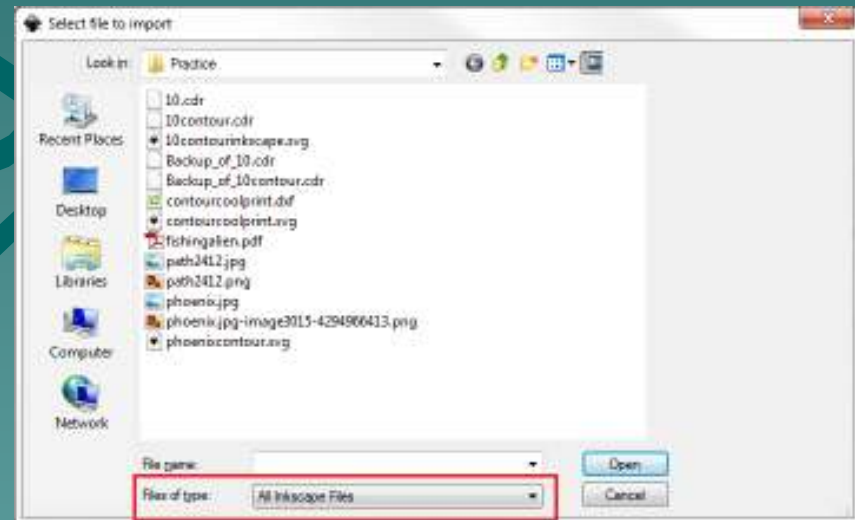
# 1-1 Contour Outline

- ◆ Import your image into Inkscape.
- ◆ Go to the File menu, and click 'Import'.



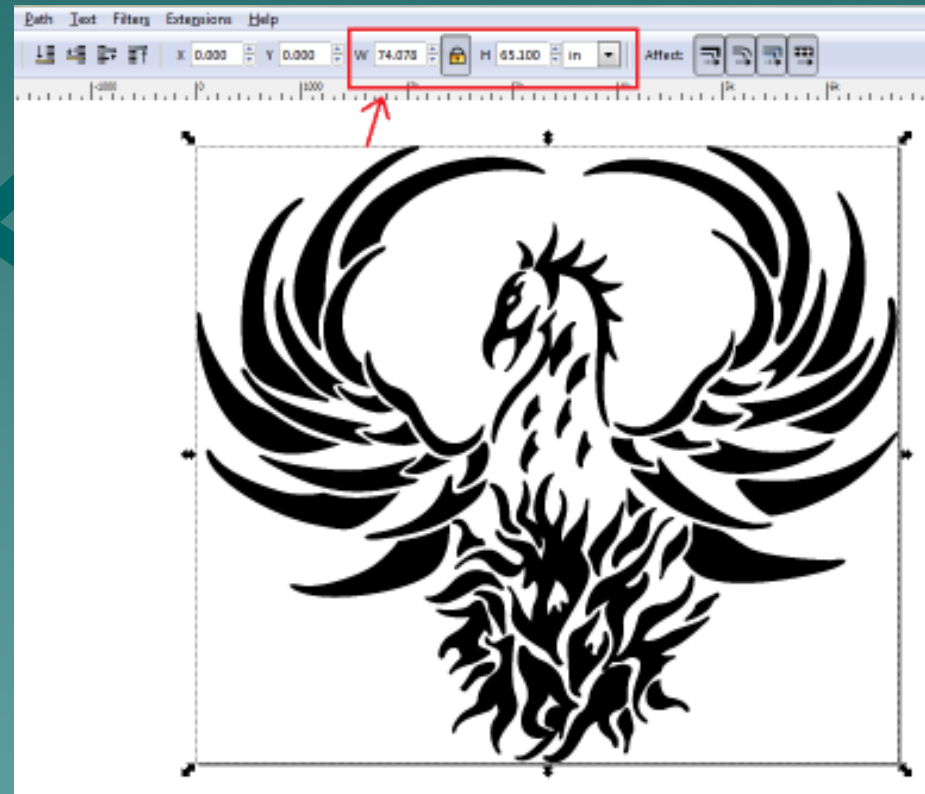
# 1-2 Contour Outline

- ◆ Browse to the folder where the file is saved.
- ◆ To view a list of supported file types, click the dropdown menu on the bottom of the screen.



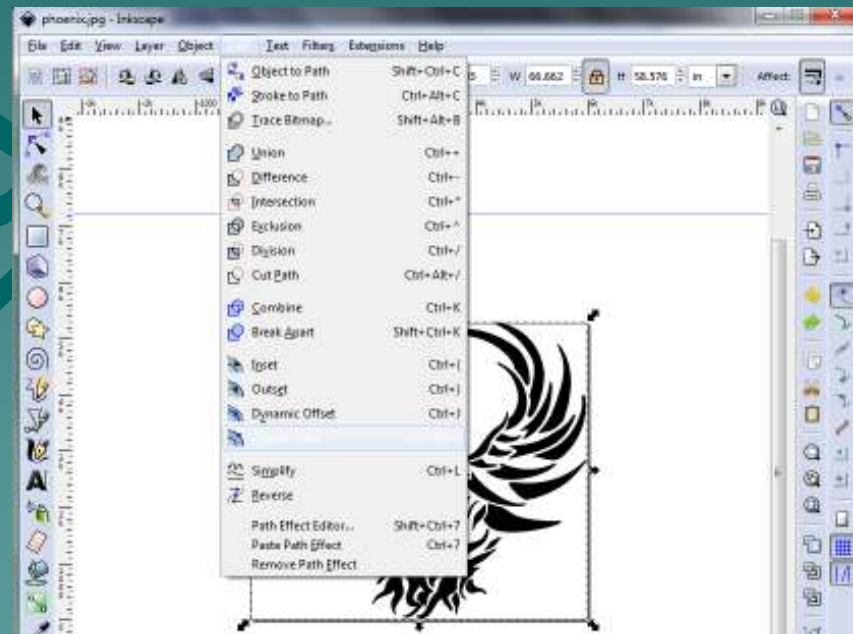
# 1-3 Contour Outline

- ◆ Once image is on the screen, confirm/adjust the size to the size you want to print.



# 1-4 Contour Outline

- ◆ Once the image size is correct, click the image, go to the Path Menu and click “Linked Offset”.



# 1-5 Contour Outline

- ◆ A small node will show up somewhere on the edge of the image.
- ◆ Click and drag the node out to start creating the outline.
- ◆ If no node is showing up, double check to make sure the image is *vectorized*.





# 1-5 Contour Outline

- ◆ As the node is dragged out, the shape of the image will start to fill in.



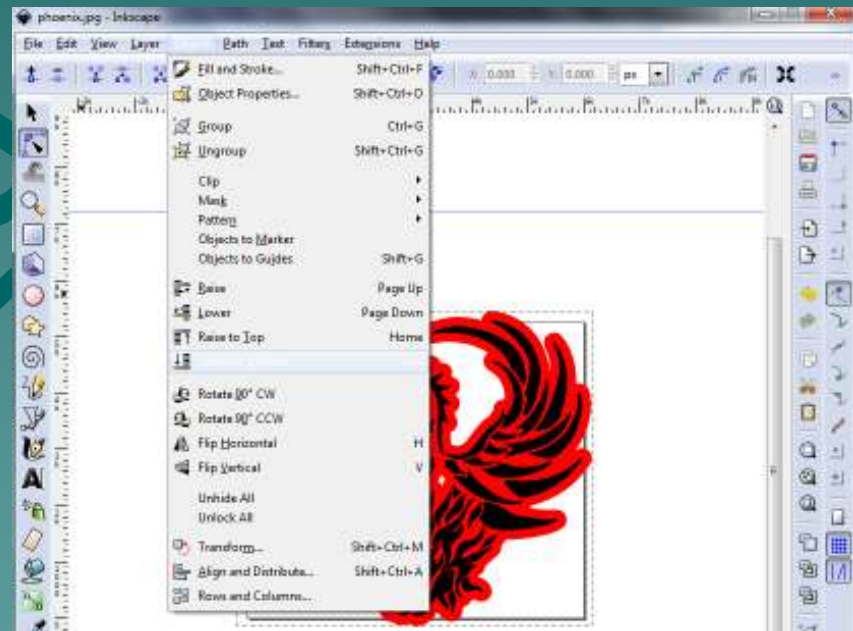
# 1-6 Contour Outline

- ◆ Adjust the color of the outline to view both the original image and the outline shape.



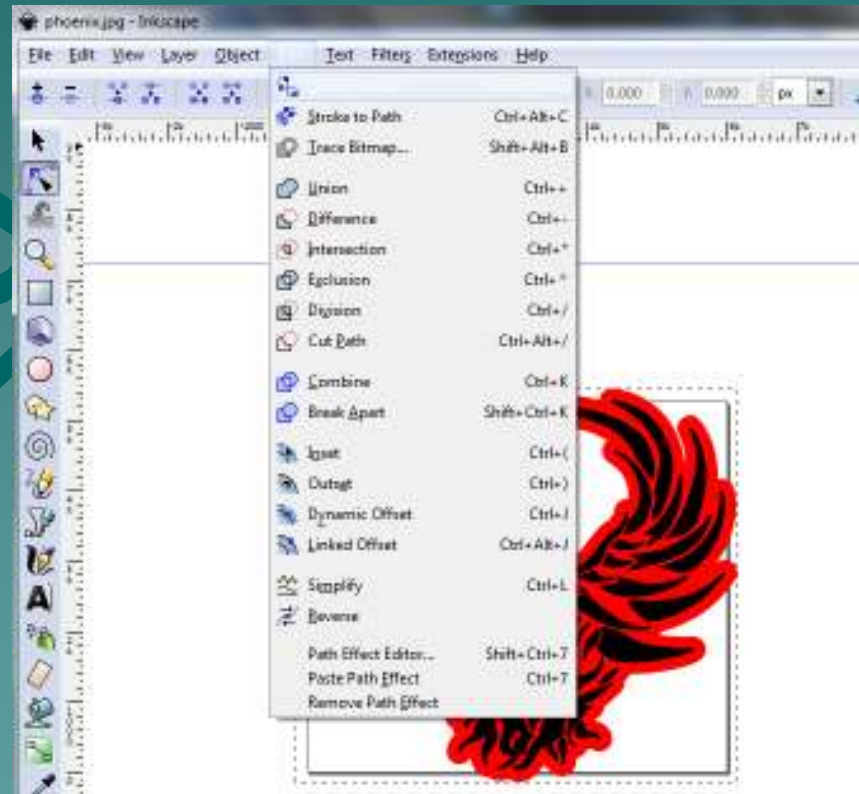
# 1-7 Contour Outline

- ◆ When finished adjusting the outline, go to the Object menu and select 'Lower to Bottom'.



# 1-8 Contour Outline

- ◆ Next, go to the Path menu, and click 'Object to Path'.



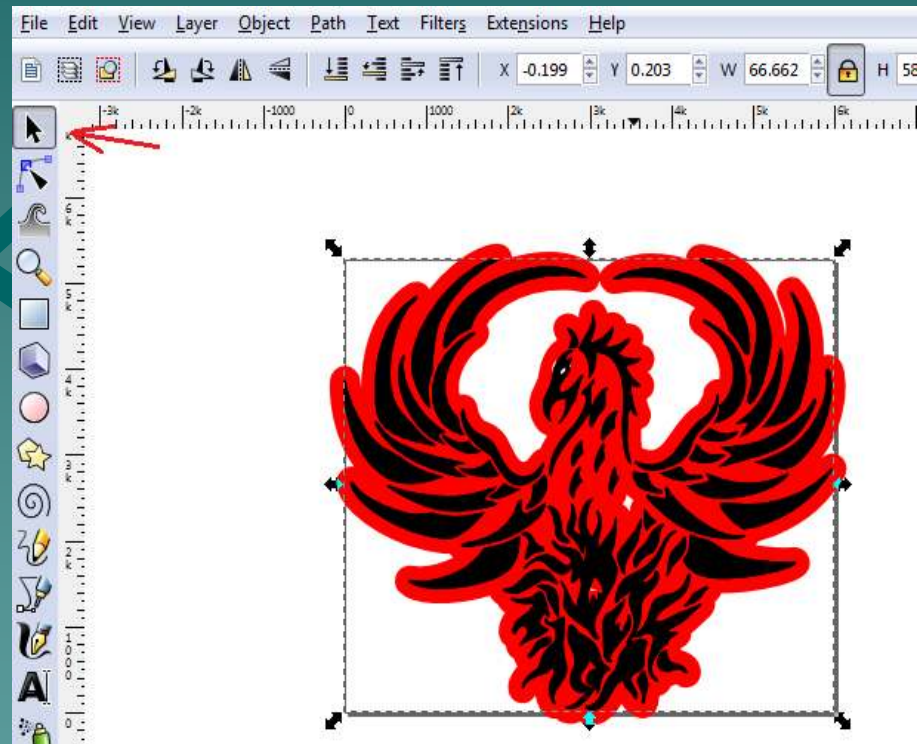
# 1-9 Contour Outline

- ◆ The image should now have a series of nodes covering it.



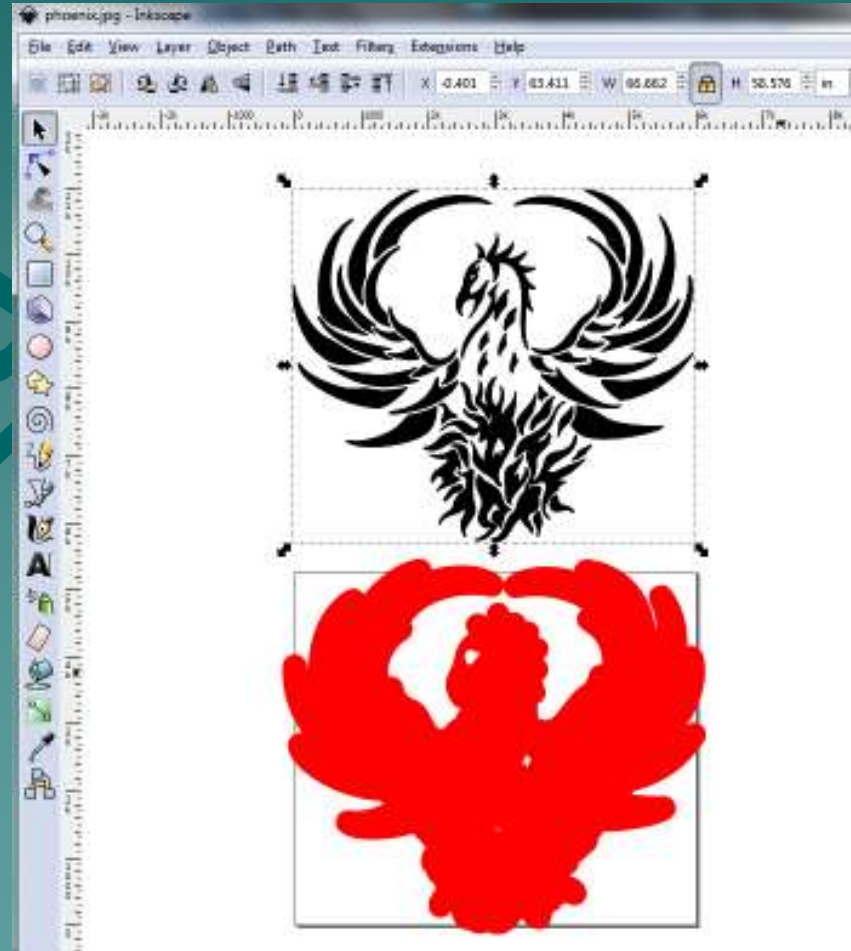
# 2-1 Clean Up

- ◆ Click the cursor icon on the left side tool bar.
- ◆ The image should have black arrows surrounding it.
  - If not, click on the image.



## 2-2 Clean Up

- ◆ Click on any part of the image area (not the outline) and drag it away from the outline.



## 2-3 Clean Up

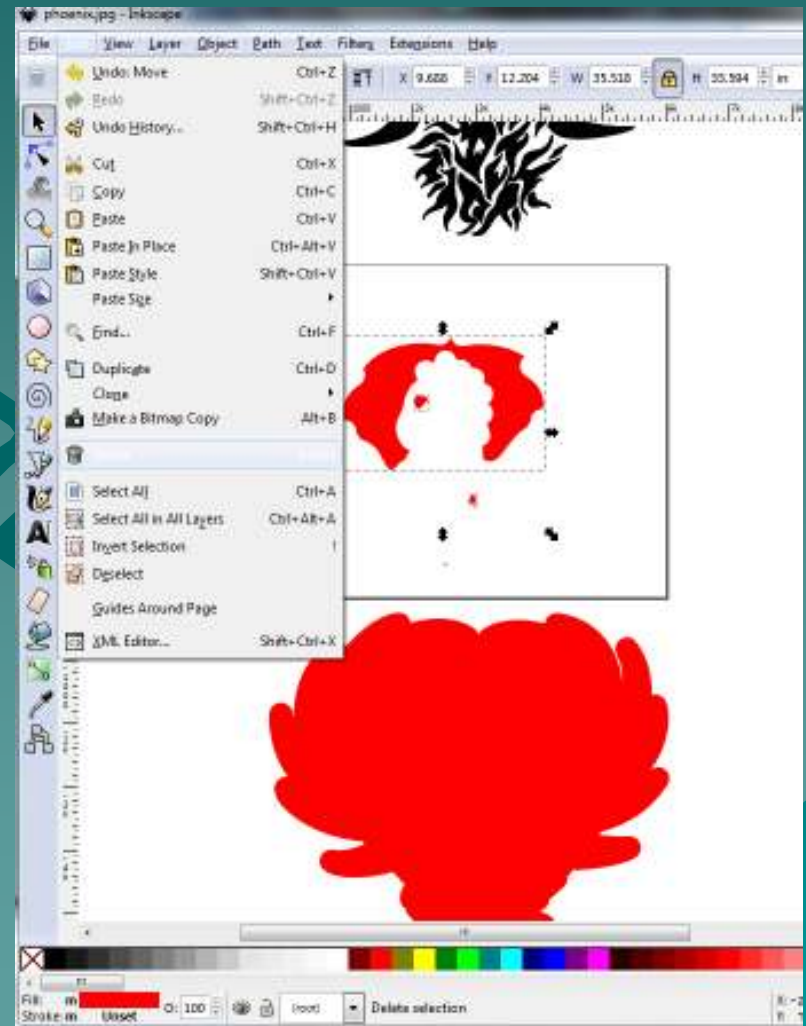
- ◆ Select the outline.
- ◆ Click the Path menu, and select 'Break Apart'.





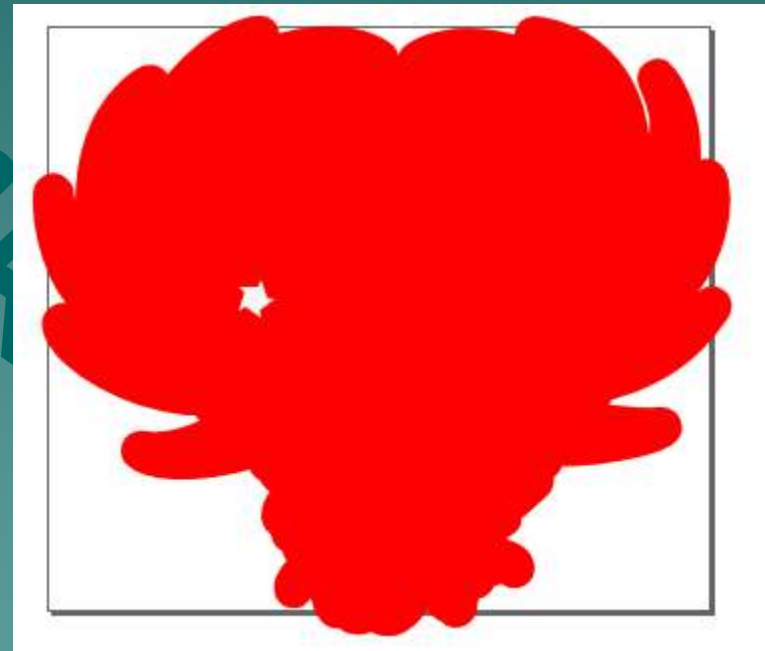
## 2-4 Clean Up

- ◆ Click in the white space on the Inkscape screen, then select the outline again.
- ◆ Drag the outline to a blank space on the screen.
- ◆ All the extra parts leftover should be deleted.
- ◆ To delete them, select the pieces, click the Edit menu, and click 'Delete'.



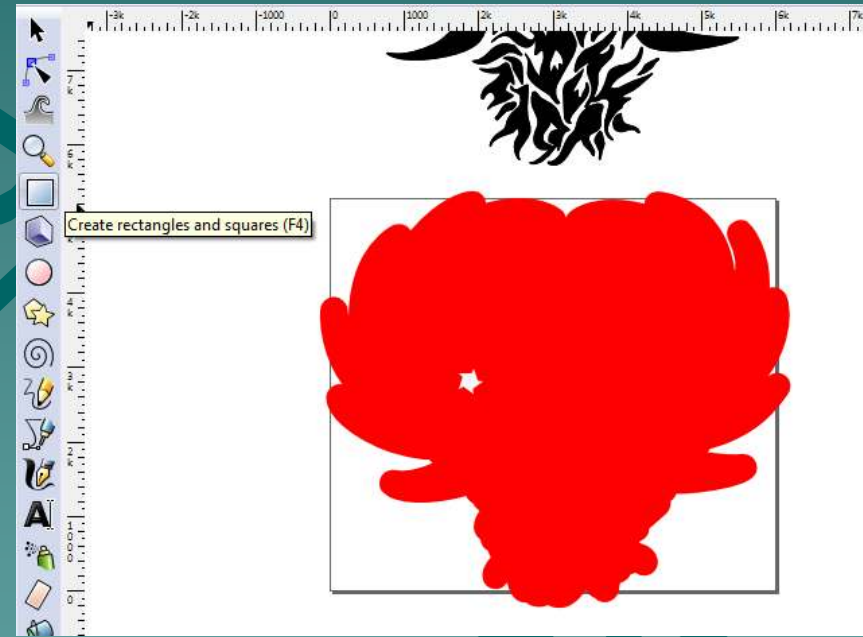
## 2-5 Clean Up

- ◆ If no white space is in the image, continue to section 3.



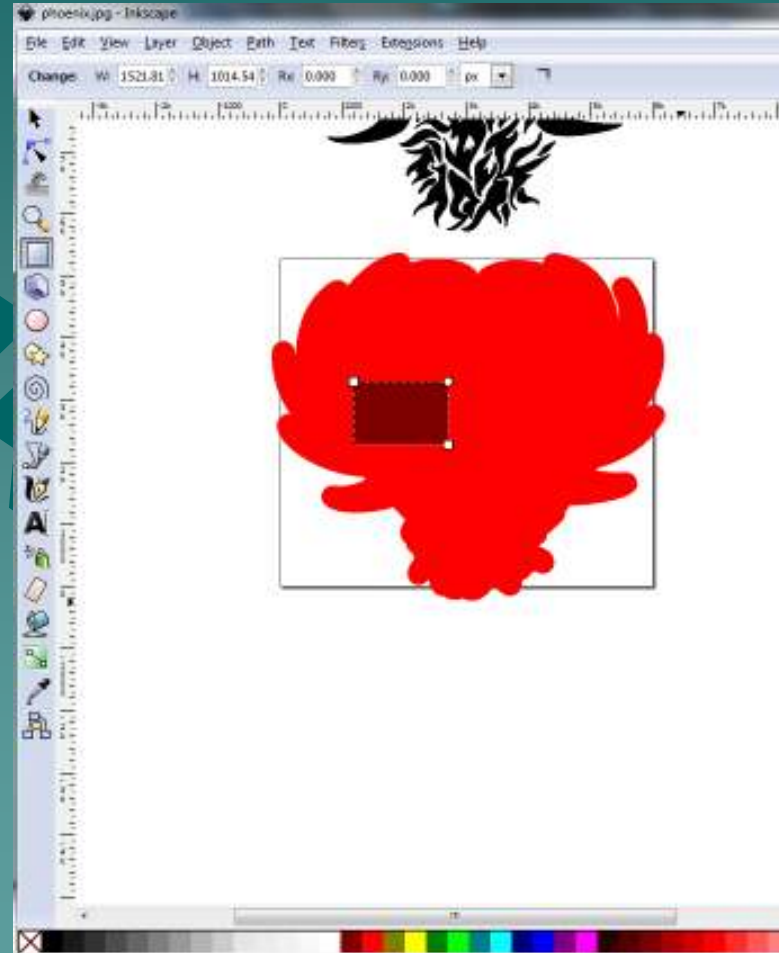
## 2-6 Clean Up

- ◆ Select the rectangle tool on the left side menu.



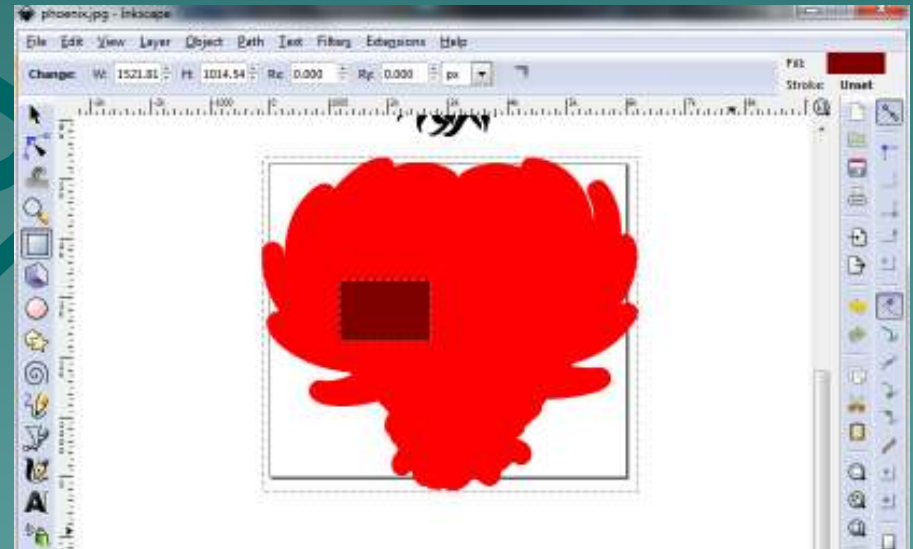
## 2-7 Clean Up

- ◆ Select a different color on the bottom of the screen to view the rectangle separately from the outline.
- ◆ Draw the rectangle over the white area on the image.
- ◆ If there is more than one white area, draw each rectangle separately.



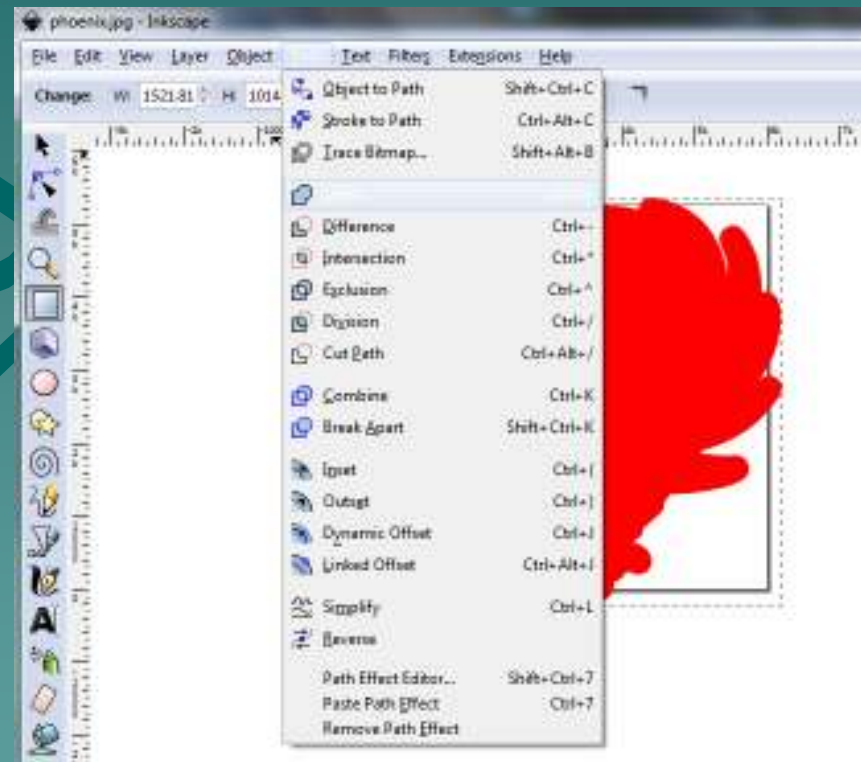
## 2-8 Clean Up

- ◆ Once the rectangle is drawn, hold down the Shift key on the keyboard and click on the outline.
- ◆ This will select both the rectangle and the outline.



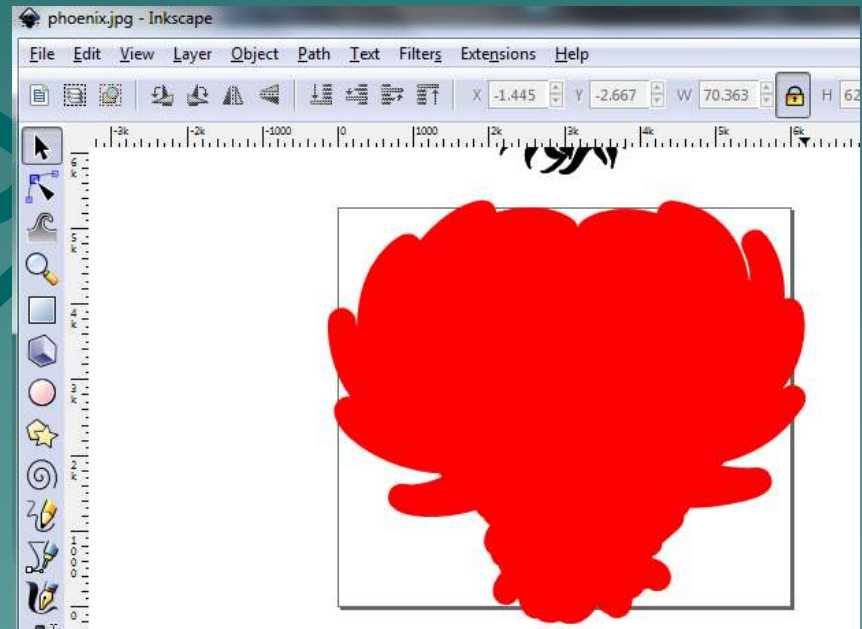
## 2-9 Clean Up

- ◆ Go to the Path menu and click 'Union'.



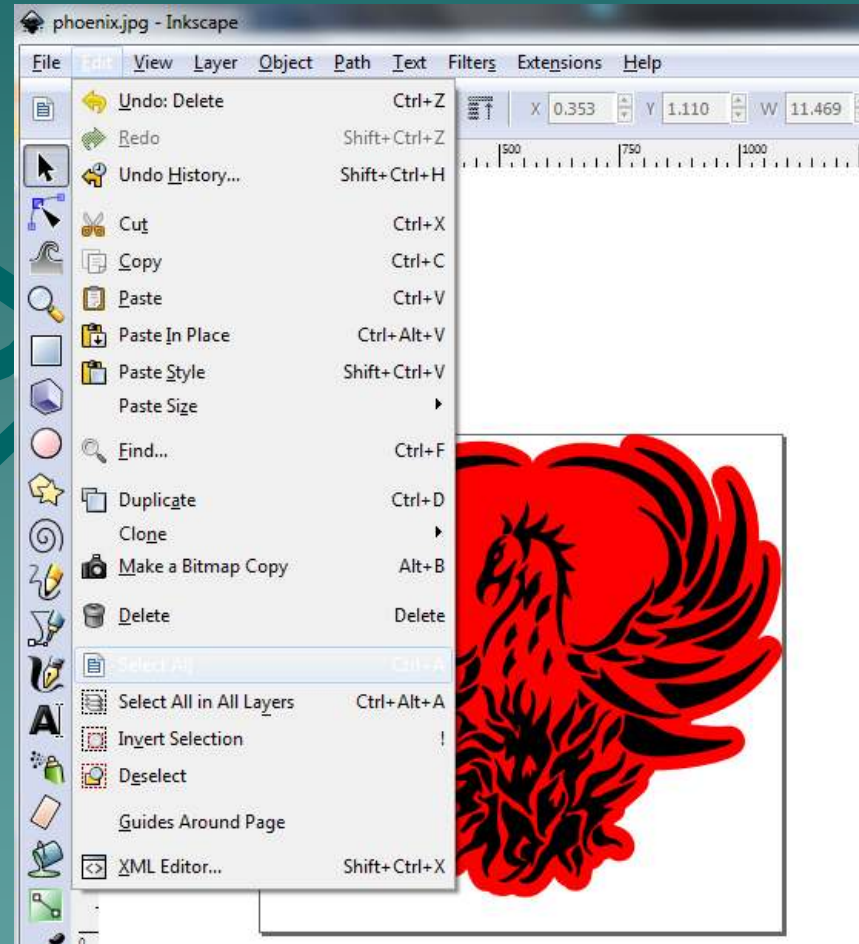
# 2-10 Clean Up

- ◆ The rectangle and outline are now the same object.
- ◆ If there are more white spaces, continue with these steps until the image is solid.



## 2-11 Adjusting the Size

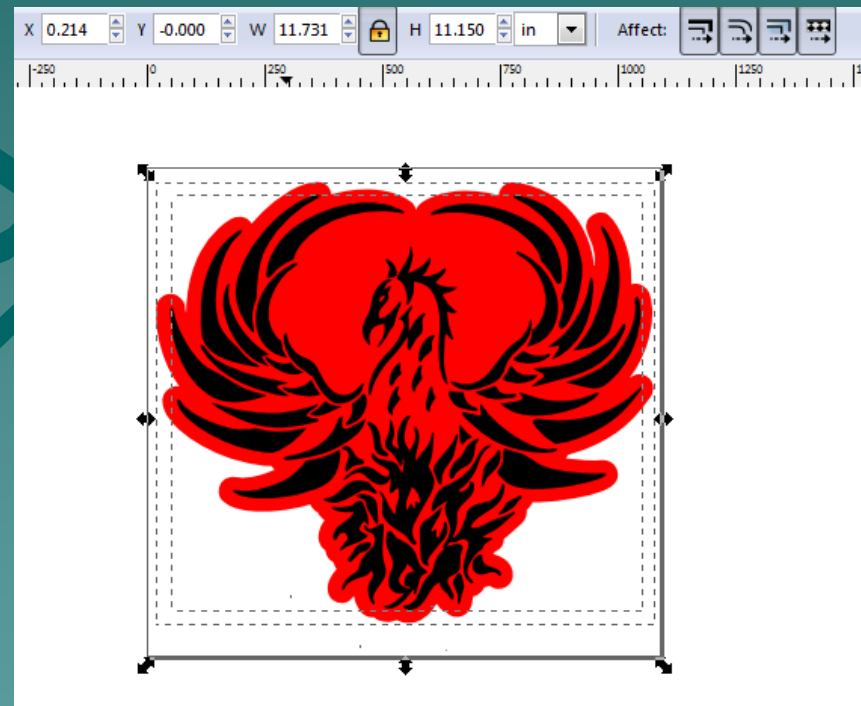
- ◆ If any other size adjustment is necessary, be sure to adjust both the image and the outline together to keep them congruent.
- ◆ To do this, go to the Edit menu, and click 'Select All'.





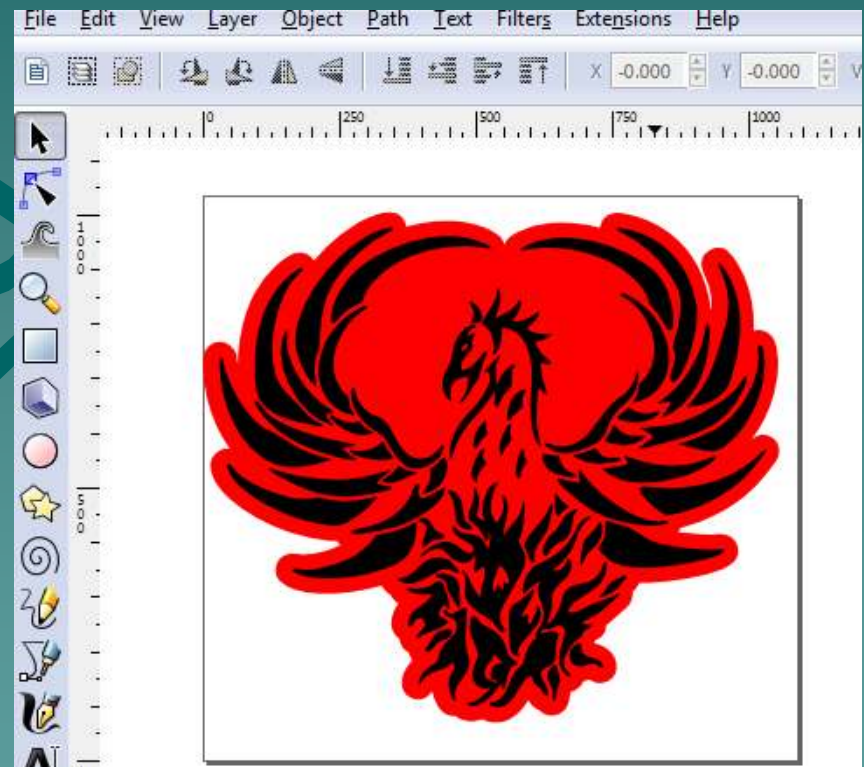
## 2-12 Adjusting the Size

- ◆ There will be a double set of boxes surrounding the two images.
- ◆ Type in the desired size of the outline in the size boxes above or drag the arrows to adjust the image and outline size.



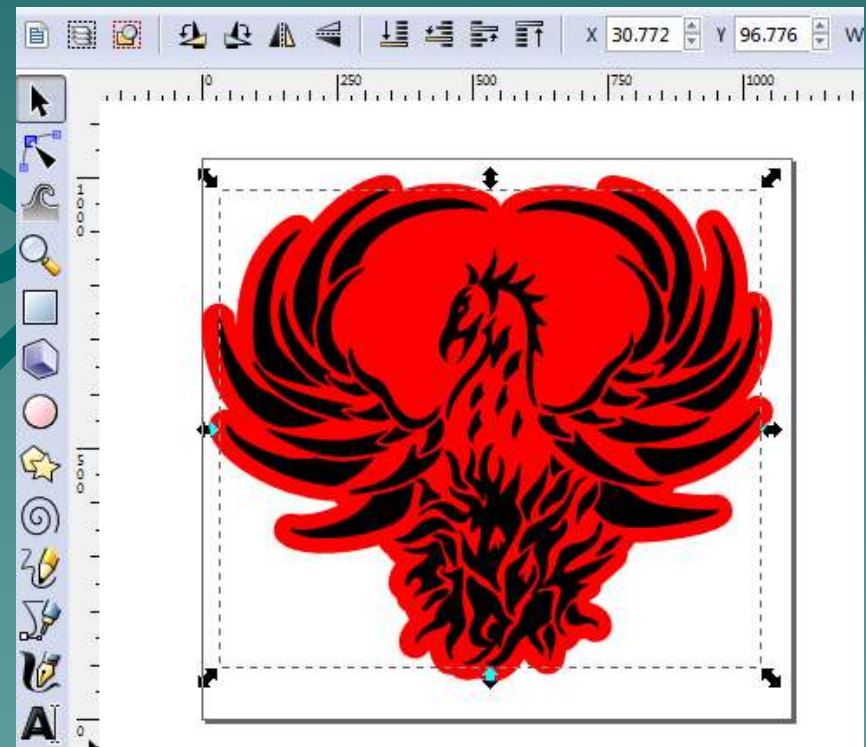
# 3-1 Finishing & Saving

- ◆ Once complete, the image and outline will show up on the screen as is.



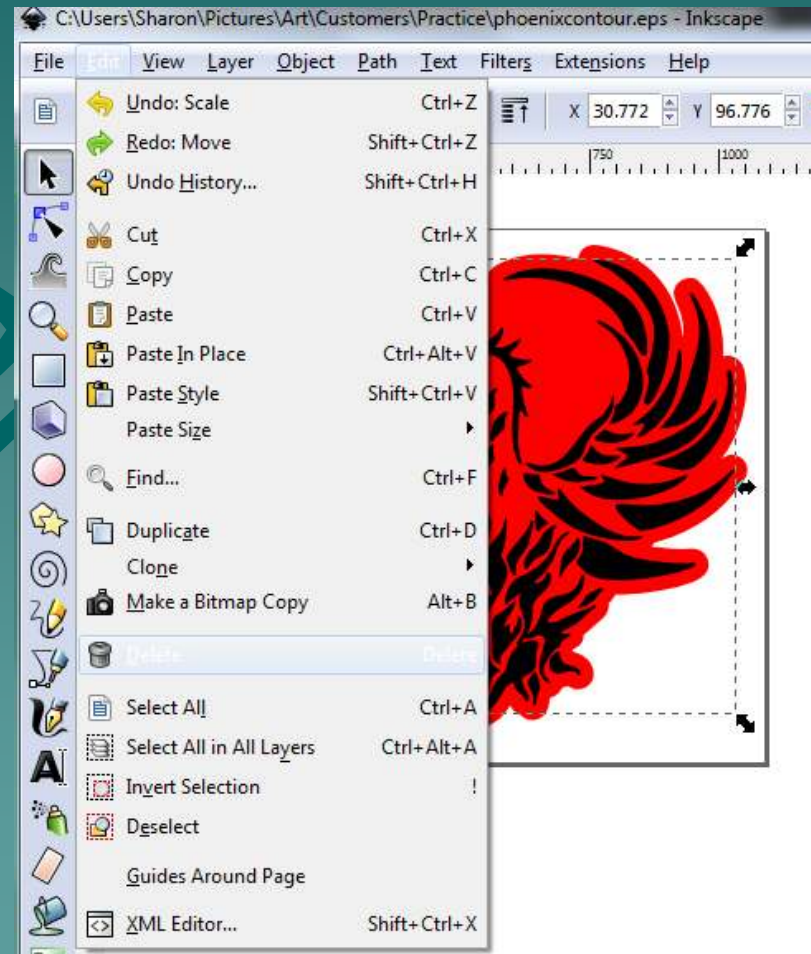
## 3-2 Finishing & Saving

- ◆ When sending the outline to the cutter, just the outline should be saved.
- ◆ The image should always be saved as a separate file.



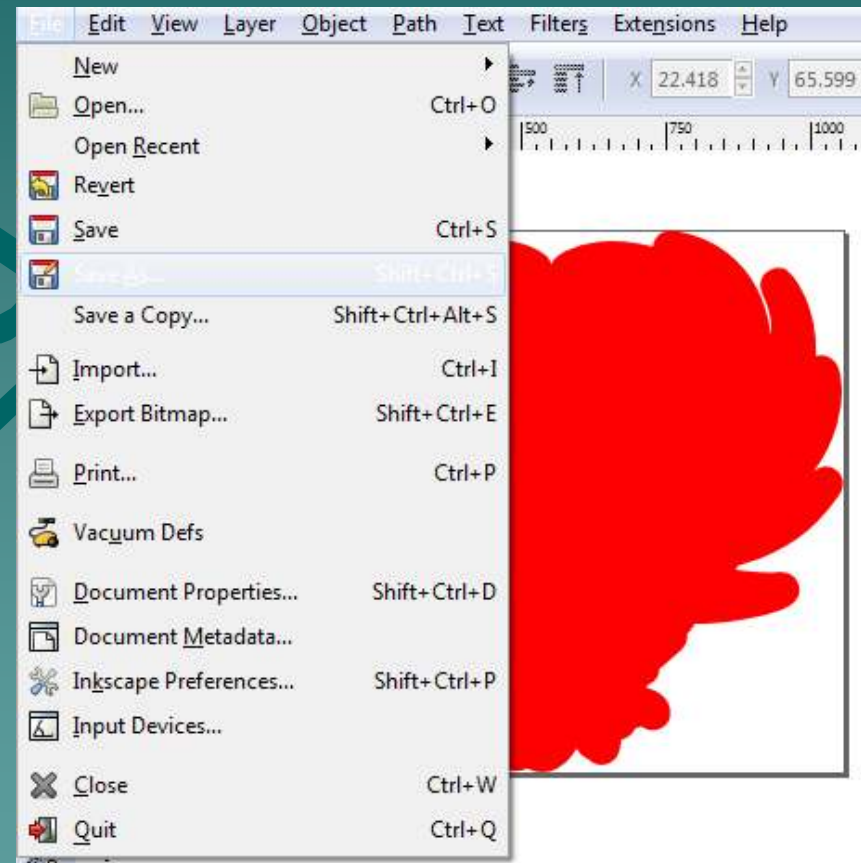
# 3-3 Finishing & Saving

- ◆ If the image adjustments need to be saved, save the file as an svg file for future editing.
- ◆ Select the image only, not the outline.
- ◆ Go to the Edit menu, and click 'Delete'.



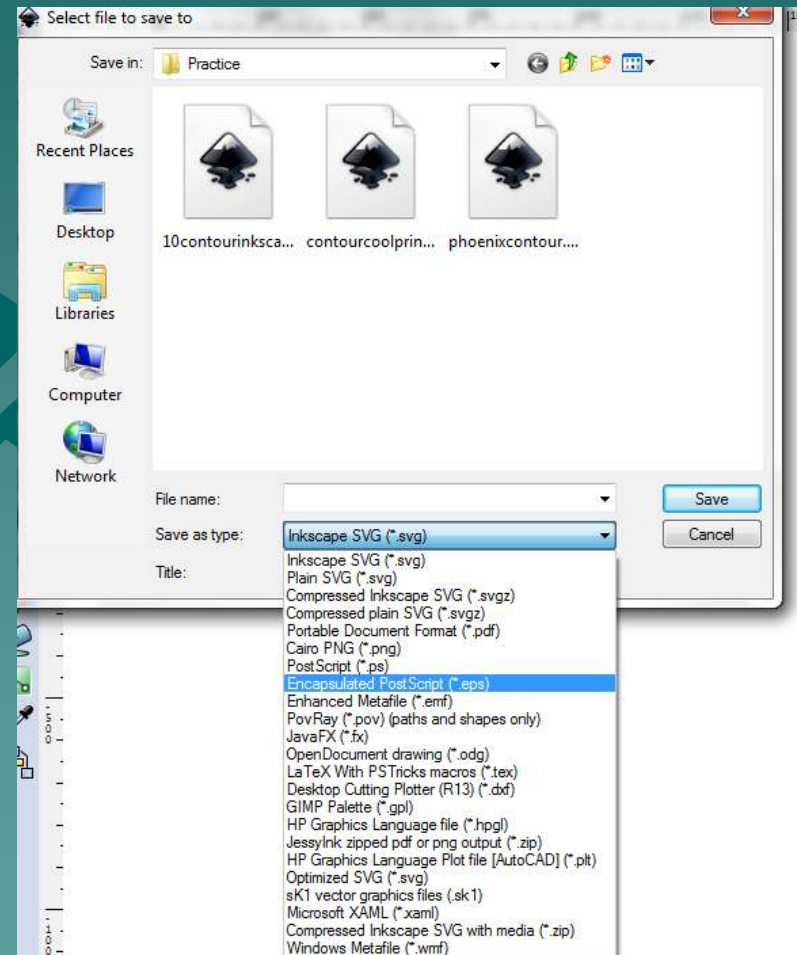
# 3-4 Finishing & Saving

- ◆ Go to the File menu and click 'Save As'.



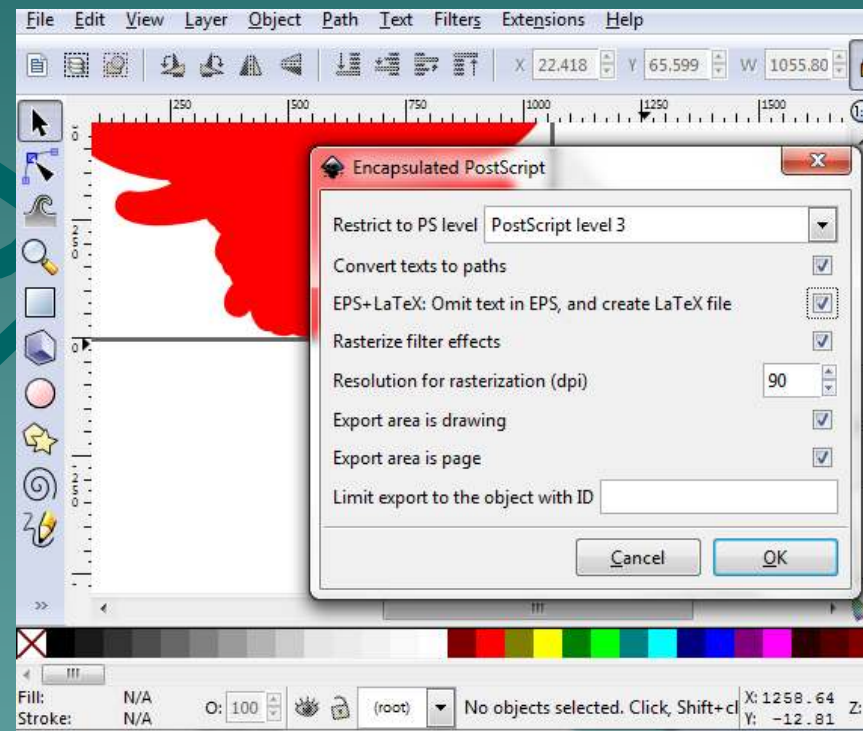
# 3-5 Finishing & Saving

- ◆ Save the outline as an eps file by selecting 'eps' in the dropdown box.
- ◆ Check and be sure the file is saved in the correct directory for easy searching in the future.



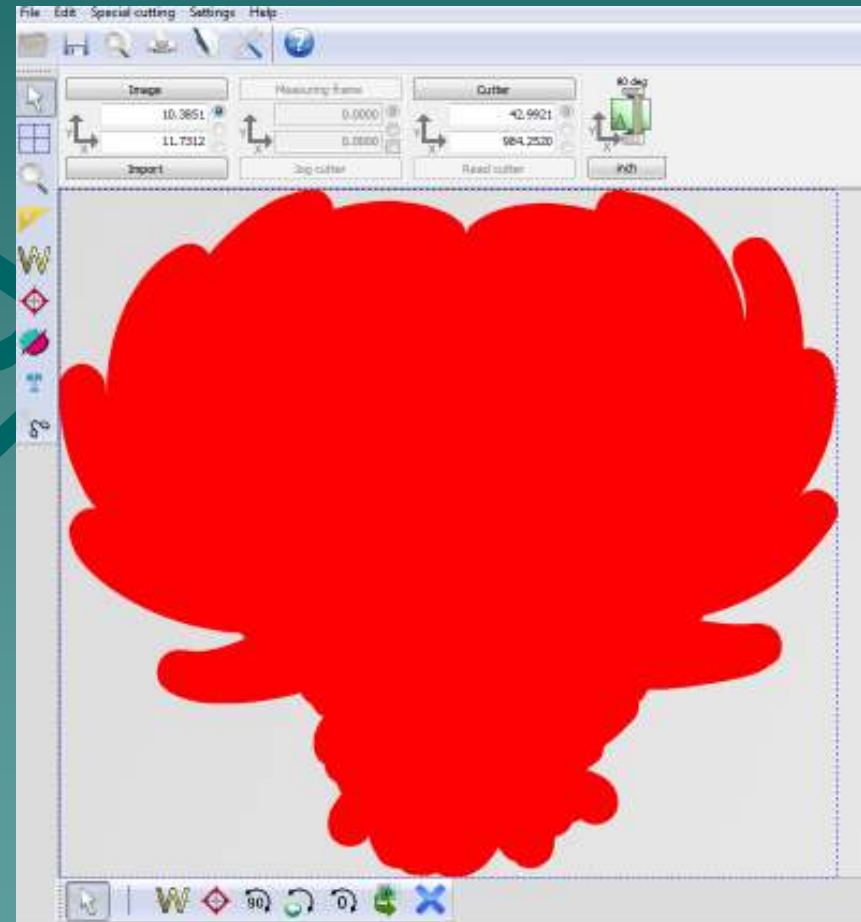
# 3-6 Finishing & Saving

- ◆ The pop up box should show as follows with all boxes checked and the PostScript level set to 3.



## 3-7 Finished

- ◆ The image can now be opened in SignCut.



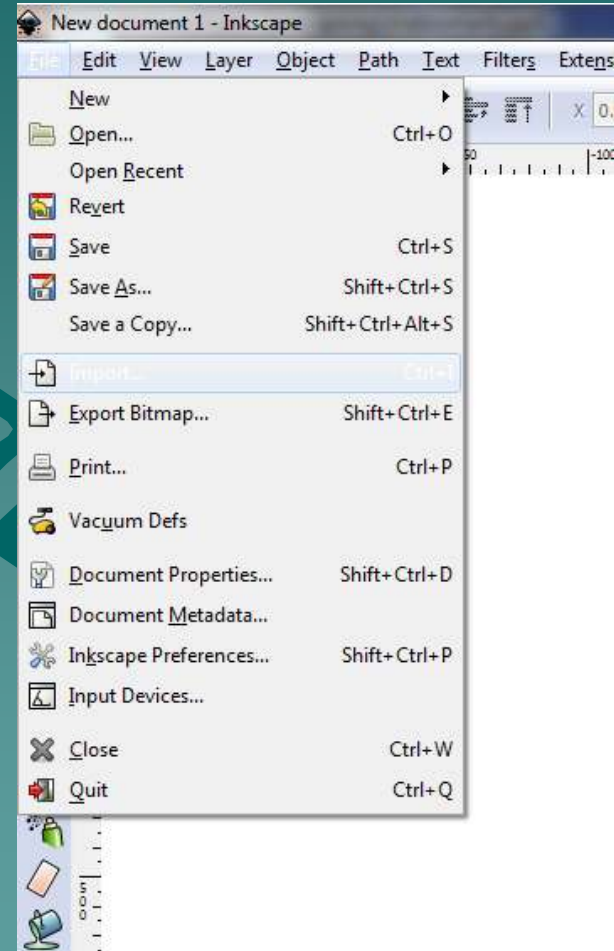


## 4 - Registration Marks

- ◆ Any image printed for contour cutting needs to have registration marks in order to be cut properly after printing.
- ◆ To add registration marks to the aforementioned image, continue in Section 4.

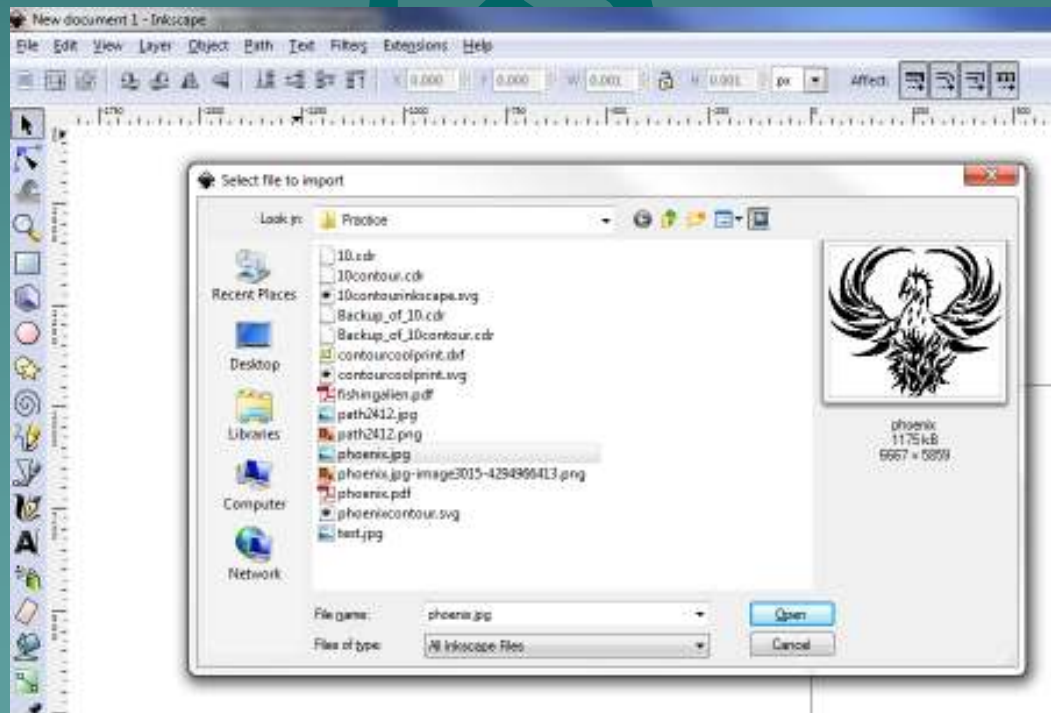
# 4-1 Registration Marks

- ◆ Import the image to be printed.
- ◆ Go to the File menu.
- ◆ Click 'Import'.



## 4-2 Registration Marks

- ◆ Select the image previously used in creating the image outline.

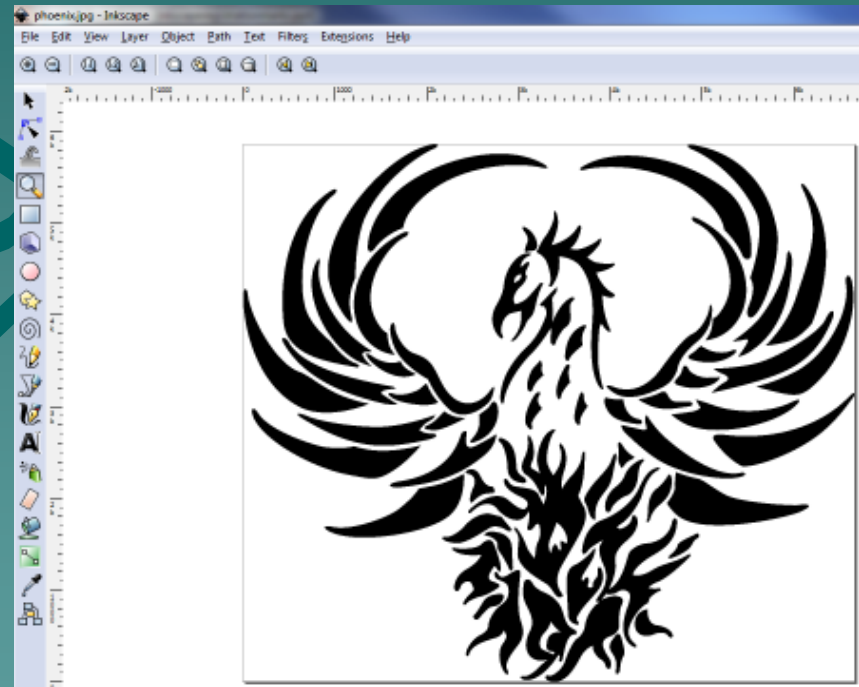


© 2011 Hahn Ventures, LLC.

CUTTERPROS.COM

## 4-3 Registration Marks

- ◆ The image size should already be set along with the Contour outline size.
- ◆ If this has not been done, please refer to the Contour Outline tutorial.



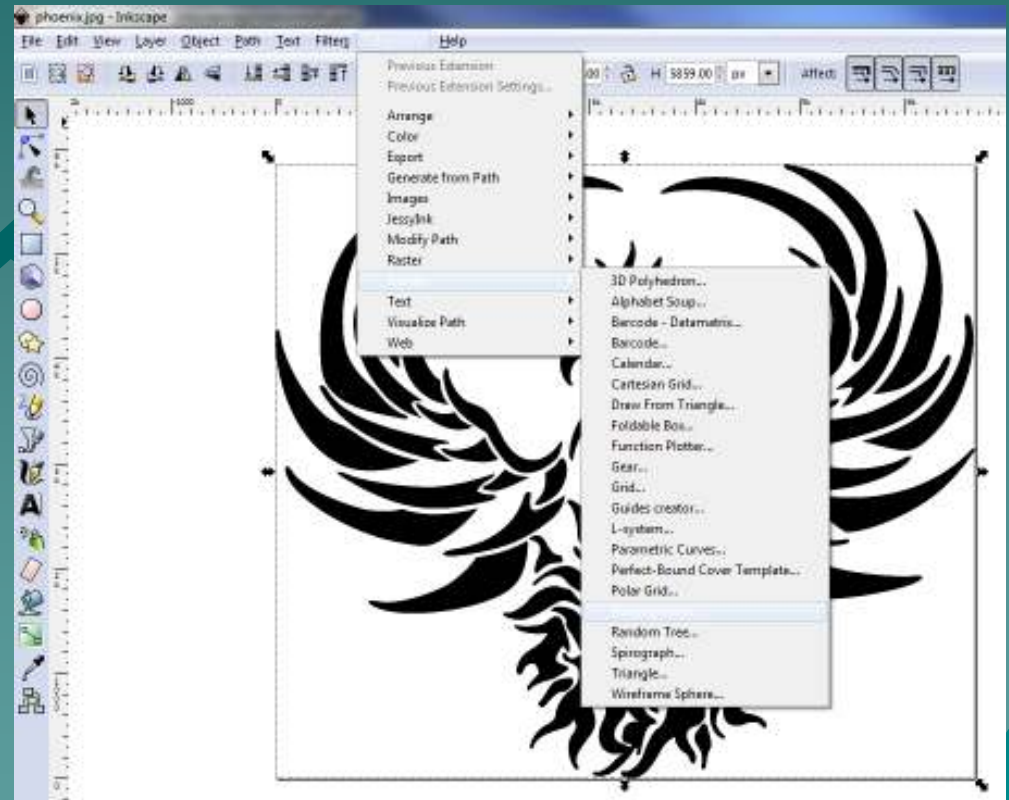
# 4-4 Registration Marks

- ◆ Select the image by clicking on it.

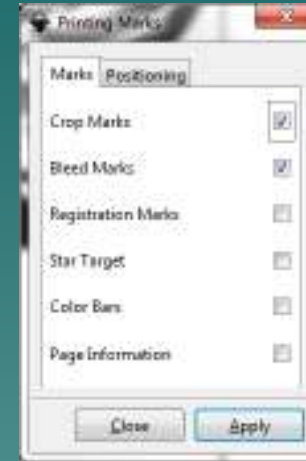


# 4-5 Registration Marks

- ◆ Go to the Extensions menu.
- ◆ Scroll down to the 'Render' section.
- ◆ Click 'Printing Marks'.



# 4-6 Registration Marks



- ◆ On the 'Positioning' tab, change the first drop down box to 'Selection'.
- ◆ On the 'Marks' tab, check the Crop Marks and Bleed Marks check boxes.
- ◆ Uncheck all others.

# 4-7 Registration Marks

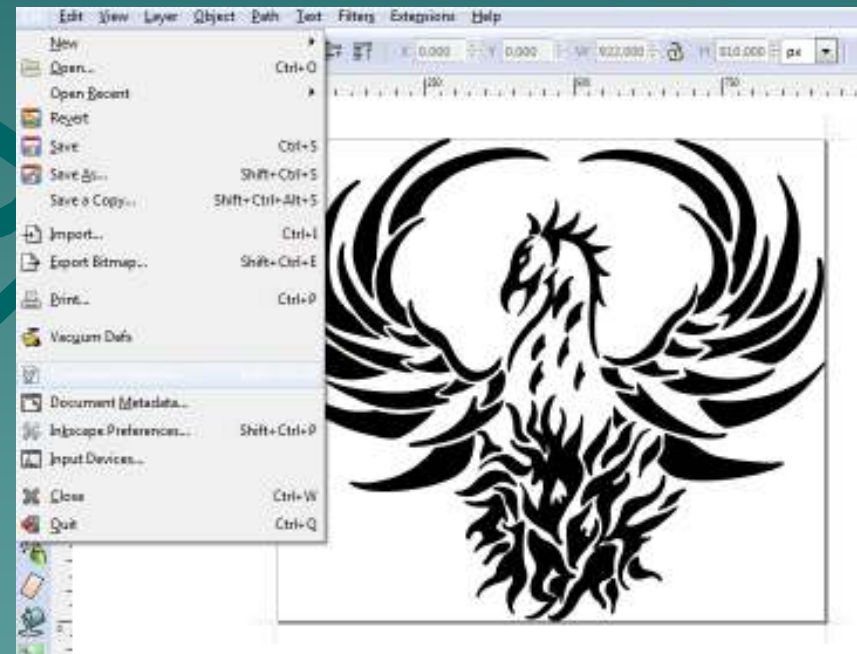
- ◆ The image now has registration marks on all 4 corners.





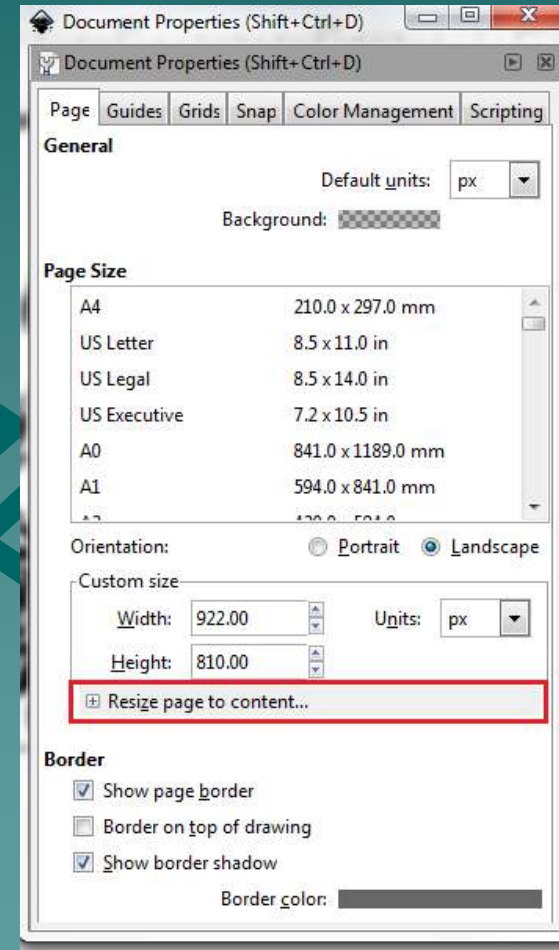
# 4-8 Registration Marks

- ◆ Before saving, the registration marks should be inside the square with the image.
- ◆ Go to the File menu and click 'Document Properties'.



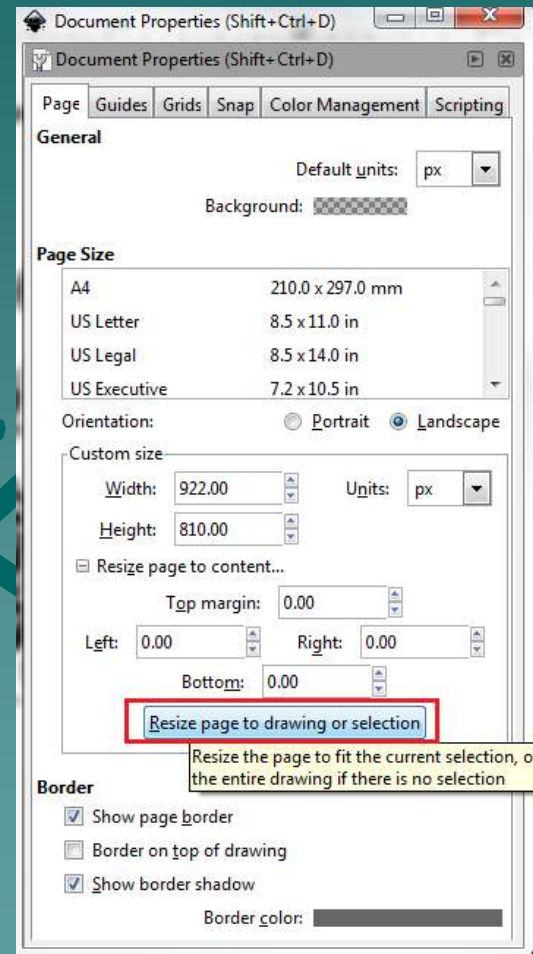
# 4-9 Registration Marks

- ◆ Click 'Resize page to content'



# 4-10 Registration Marks

- ◆ Click 'Resize page to drawing or selection'.



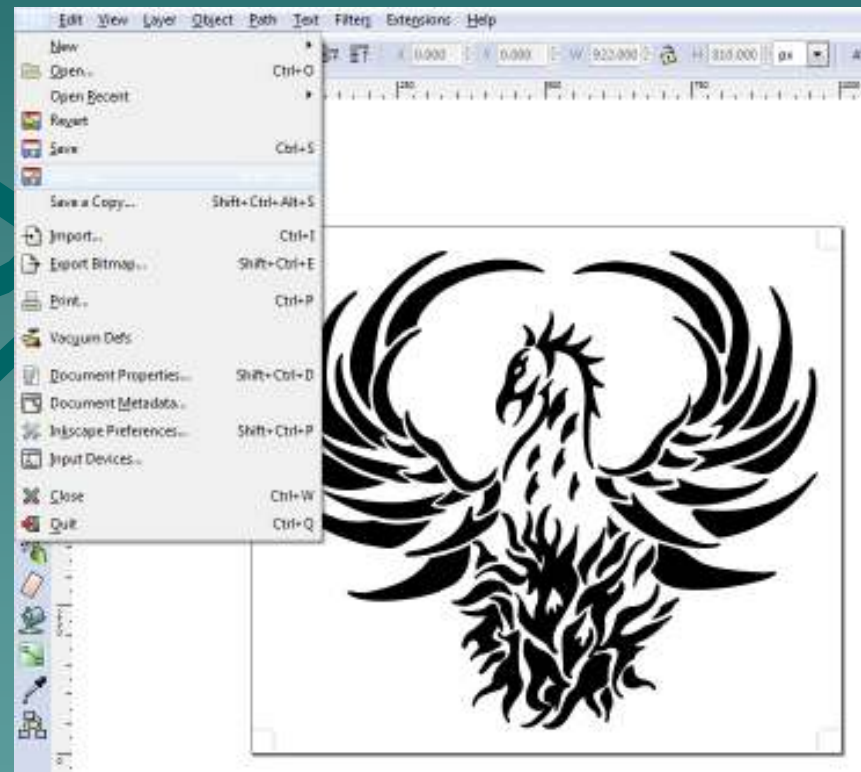
# 4-11 Registration Marks

- ◆ The registration marks will now show up inside the box.



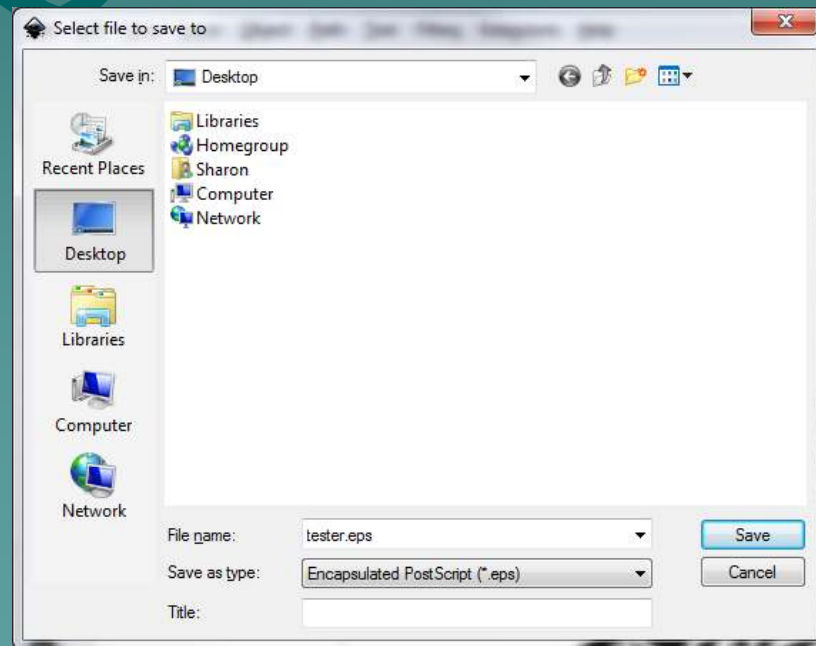
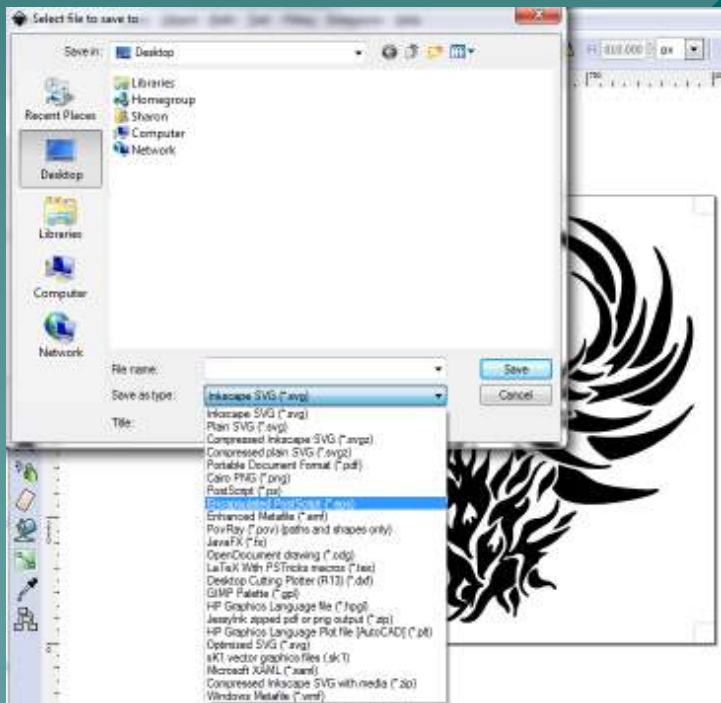
# 4-12 Registration Marks

- ◆ Save the image.
- ◆ Go to the File menu.
- ◆ Click 'Save As'.



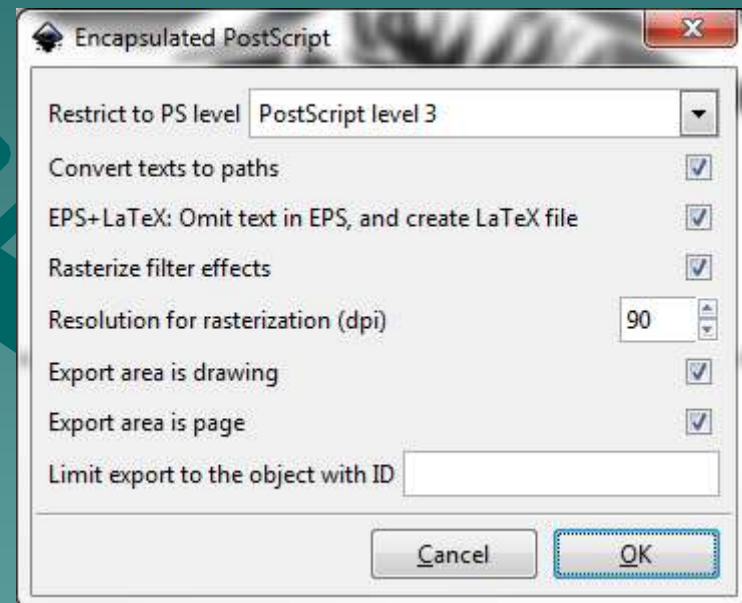
# 4-13 Registration Marks

- ◆ Select Encapsulated PostScript (EPS) as the file type.
- ◆ Browse to the folder you would like to save the file in.
- ◆ Type in a file name.
- ◆ Click 'Save'.



# 4-14 Registration Marks

- ◆ Check all boxes on this screen.
- ◆ Click 'OK'.
- ◆ The image is now saved and ready for printing with registration marks.



# 5-1 Contour Cutting

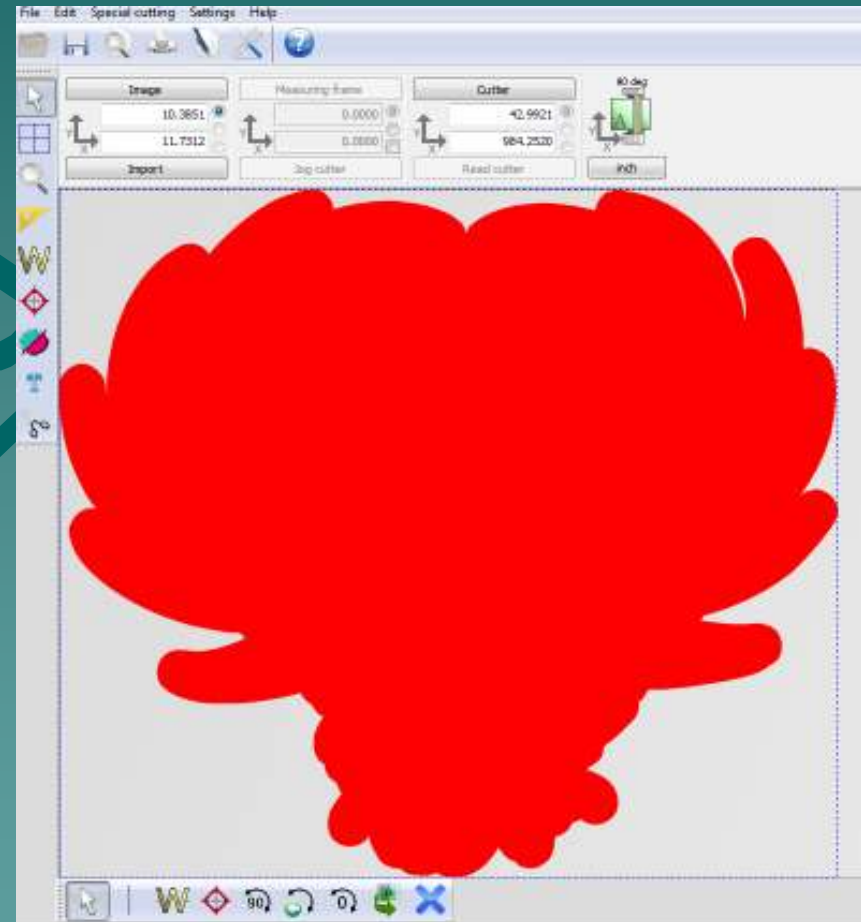
- ◆ Print image on vinyl with registration marks.





# 5-2 Contour Cutting

- ◆ Once the image is printed, place the vinyl into the cutter.
- ◆ Open SignCut.
- ◆ Open the image outline.
- ◆ Do **NOT** adjust the outline size.
  - If the size is adjusted, it will not cut correctly around the printed image.



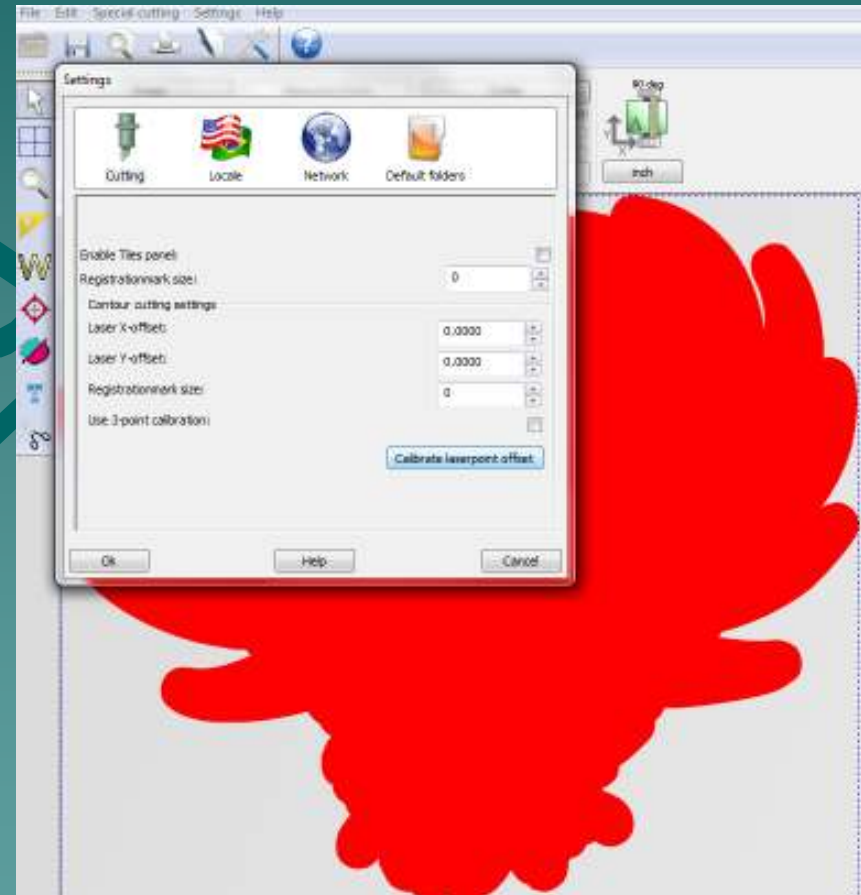
## 5-3 Contour Cutting

- ◆ To calibrate the registration marker, go to the Settings menu and click 'Settings'.



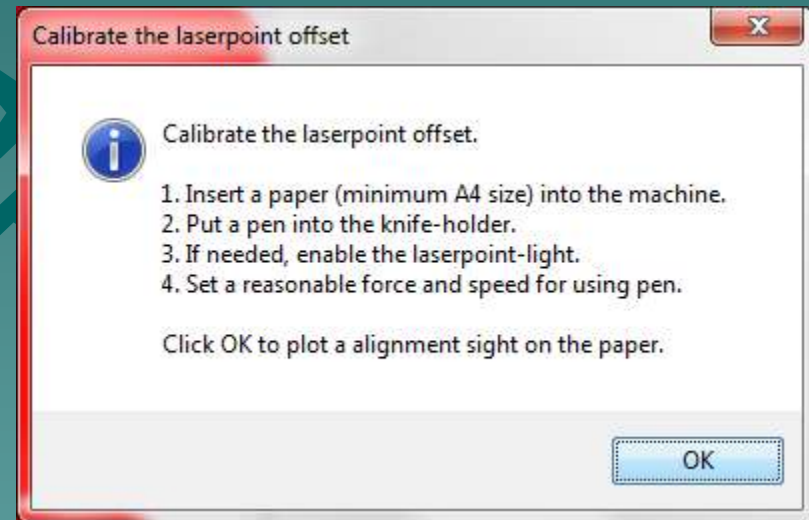
# 5-4 Contour Cutting

- ◆ Before running the calibration, take the blade out of the cutter and insert the pen.
- ◆ When ready, click 'Calibrate laserpoint offset'.



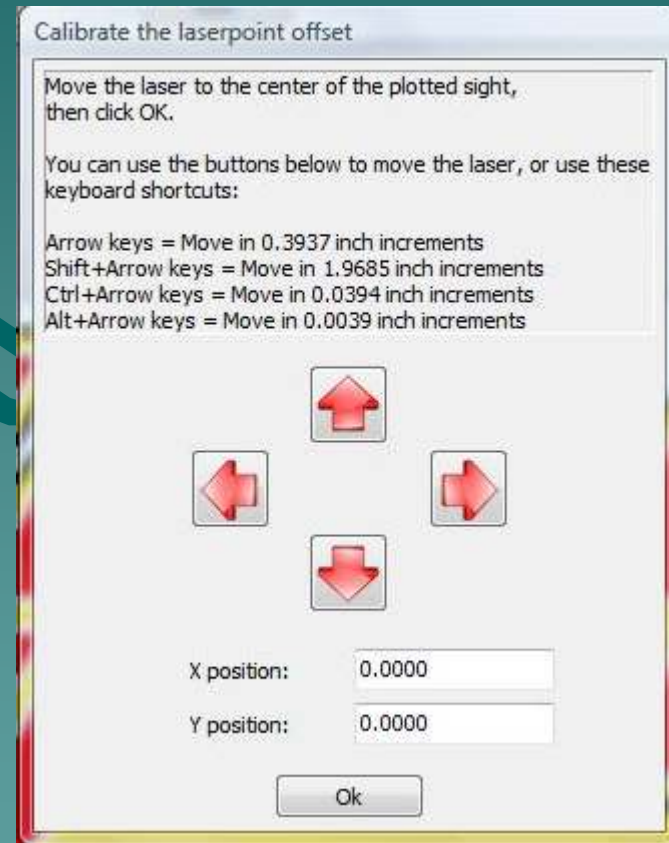
# 5-5 Contour Cutting

- ◆ Once the instructions on this screen have been set, click OK.
- ◆ The cutter should now draw a registration mark onto the vinyl.



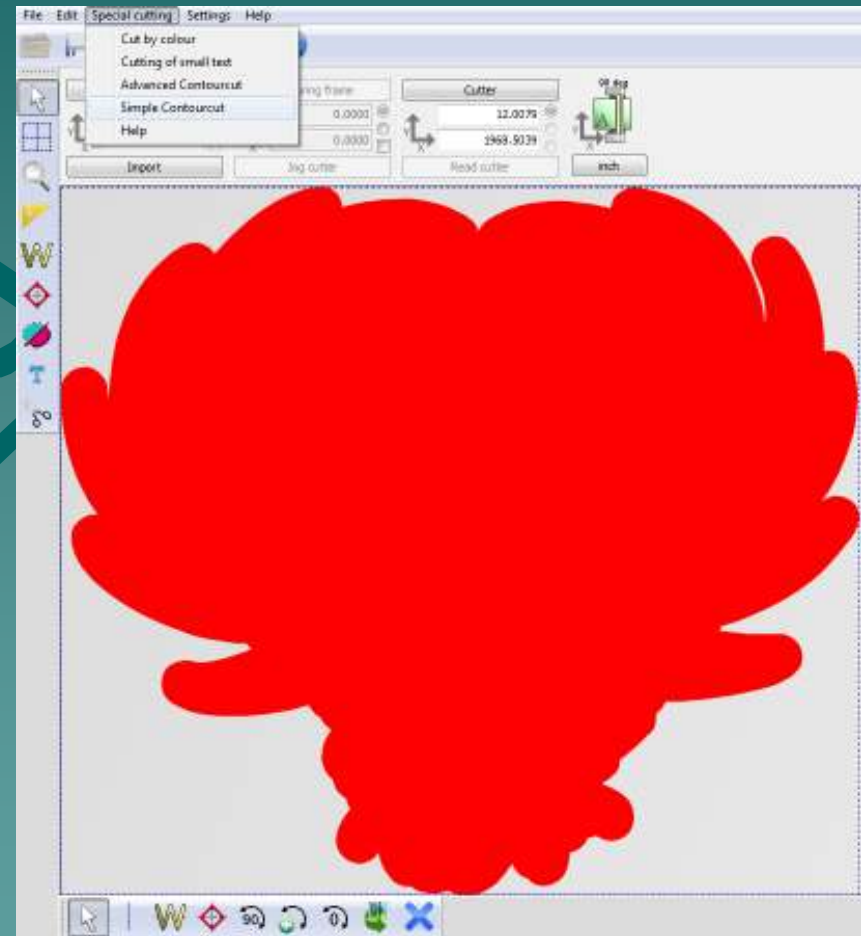
# 5-6 Contour Cutting

- ◆ Use the on screen arrows, or the arrows on the keyboard to move the carriage to the correct position.
- ◆ When finished, click OK.



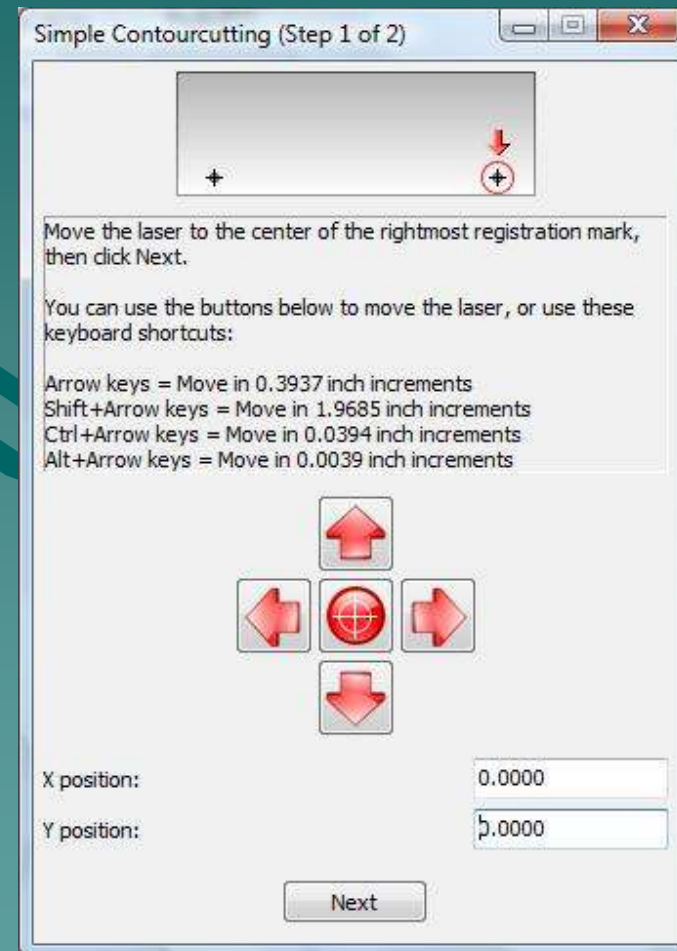
# 5-7 Contour Cutting

- ◆ When ready to cut your image, go to the 'Special cutting' menu.
- ◆ Click 'Simple Contourcut'.



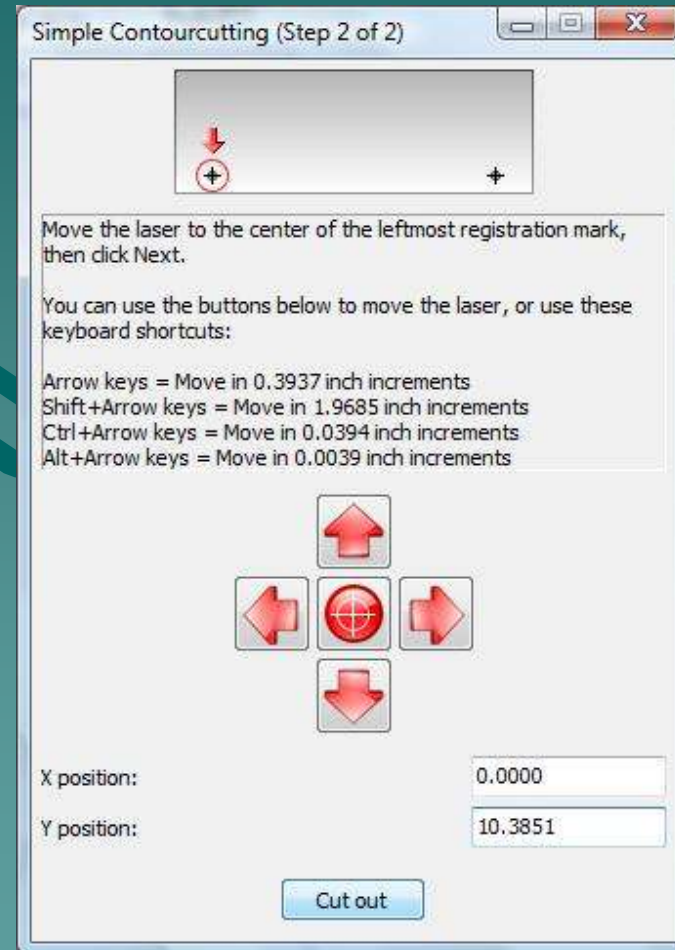
# 5-8 Contour Cutting

- ◆ Use the arrows on the screen or the keyboard arrows to point the LED light to the center of the first registration mark.
- ◆ This is the right most mark on the image.
- ◆ When finished, click Next.



# 5-9 Contour Cutting

- ◆ The carriage should move over near where the second mark is placed.
- ◆ Continue adjusting the light until it is in the center of the second registration mark.
- ◆ This is the left most mark on the image.
- ◆ When finished, click Cut Out.





# 5-10 Contour Cutting

- ◆ The contour cut should now begin.
- ◆ When completed, weed out the excess vinyl around the image.



# The End

Please review our tutorials for more information on particular features.

<http://www.cutterpros.com/downloads> for further information.  
To speak with a technician, submit a ticket at  
<http://www.cutterpros.com/support/> or call 888-828-8776 x227

CutterPros.com/Hahn Ventures LLC is NOT liable for any software/attachments/instructions/download links/content contained in this presentation. Use the contents of this presentation AT YOUR OWN RISK. CutterPros.com/Hahn Ventures LLC is NOT responsible for any damages incurred to your computer hardware/software or any possible viruses/Trojans/malware or any other type of damaging programs that may be contained in the links and/or attachments. It is your responsibility to verify the contents before using any of the information contained in this presentation. By using the contents in this email you agree to hold CutterPros.com/Hahn Ventures LLC harmless of all liability and damages. You agree that you are totally responsible for what you put on your computer, software you install on your computer and files you download to your computer.