



CMH

CMJ and CMT also available



CSH

CSJ and CST also available



COH

COT also available

# ControlHoist™

## Commercial Operators

### ControlHoist Basic

The ControlHoist Basic is the ½ hp only intermittent duty commercial operator in the Raynor offering.

A belt drive designed to operate at 14 cycles/hour the ControlHoist Basic is our entry level model when low cycle, lighter doors and budget is a consideration.

### ControlHoist Standard

The ControlHoist Standard model opens the offering to 30 cycles/hour performance.

It includes ⅓ and ¾ hp options in addition to the ½ hp and is enhanced to a continuous duty motor that is ideal for more demanding environments and use.

### ControlHoist Optima

The only continuous duty gear driven model.

The ControlHoist Optima is the "Go anywhere" powerhouse of the Raynor commercial operator offering.

Available up to 2 hp, the Optima is designed for large doors, high cycle and the most robust environments.

# ControlHoist™ Basic

## Basic Commercial Operator

The ControlHoist Basic is a ½ horsepower, belt-drive operator, perfect for operating smaller sized sectional doors, rolling doors and grilles. This entry level unit is loaded with innovative features along with a durable construction suitable for most commercial applications.

### Models

The **CMJ** model is designed for use on vertical lift and lift clearance sectional doors or small rolling doors and grilles. The operator can be wall or hood mounted on either side of the door. It incorporates a floor level disconnect mechanism for manual operation.

The **CMH** model is designed for use on vertical lift and lift clearance sectional doors or small rolling doors and grilles. The operator can be wall or hood mounted on either side of the door. It incorporates the patented Hoist-a-matic®, a self-engaging chain hoist for manual operation, which simplifies operation and installation.

The **CMT** model is designed for use on smaller and low-cycling industrial standard lift sectional doors. It features a high starting torque intermittent duty industrial type motor and a quick release disconnect arm.

### Specifications

**Operation:** Jackshaft  
Trolley

**Duty Cycle:** 14/hr or 50 cycles/day

**Drive:** Belt

**NEMA Options:** NEMA 1

**Motor** ½ HP, 120V single phase, 60Hz intermittent-duty open type motor with 1.5s delay on reverse and internal automatic reset thermal overload protection.

**Circuit Board:** Solid State Logic with LED diagnostic

**Power:** 120V Single-Phase

**Radio Receiver:** Optional

**Radio Transmitter:** Optional

**Warranty:** 3 years with purchase of door  
2 years with purchase of operator only

**Raynor Advantage:** Easily configure the correct operator with a door for a total Raynor branded system with an extended extra year of warranty.



CMJ



CMH



CMT

# ControlHoist Basic

## Standard Features

### Manual Operation:

**CMJ**- A floor level disconnect mechanism which must be engaged for manual push-up operation.

**CMH**- Hoist-a-matic® self-engaging hoist (floor level engagement device is not required to operate) for manual chain operation. An electrical interlock automatically disconnects power to the motor operator when the chain hoist is engaged. Hoist on right is standard.

**CMT**- Quick release disconnect arm for manual push-up operation.

**Mechanical Brake:** Built-in mechanical brake system helps to prevent the door from drifting and adds security by preventing forced opening.

**Drive Reduction:** Primary reduction is belt drive. Secondary reduction is by chain and sprocket.

**Adjustable Friction Clutch:** Helps to protect the door and operator from damage should it come into contact with any obstruction.

**Corrosion Protection:** Frame and control enclosure protected by baked on, long lasting enamel finish. All shafts protected by yellow chromate coating.

**Accu-cam® Limit Feature:** For precise and quick one-handed limit setting adjustments.

**Cycle Counter:** LED clearly indicates the number of cycles logged for easy maintenance support.

**Programmable Mid-Stop:** This feature enables partial opening of door to a preprogrammed position for energy savings, time savings and convenience.

**Timer-To-Close:** Closes the door automatically after a predetermined amount of time has elapsed, for security and convenience.

**Exterior Radio Control Terminal:** Provides for fast and easy connection of radio controls. When range is an issue, an external mounted radio receiver allows the flexibility for the receiver to be moved to a new location for improved range.

**3-Button Control Station:** This station provides open/close/stop functions.

## Controls

**Entrapment:** UL 325 2010 requires all commercial operators to use constant pressure to close or be equipped with an approved monitored entrapment protection device, such as a monitored photo eye or reversing edge. All ControlHoist commercial operators are provided standard with constant pressure to close. In addition, a non-monitored entrapment device can also be selected.

**Circuit Board:** 24VDC relaying circuit with a 40VA class II transformer, non-volatile memory. Features available:

- 1.5s delay on reverse
- Maximum run timer
- Mid-stop
- Timer to close
- Advance close system
- Test buttons
- Reverse wiring detection
- Door lock sensor

Certifications: ANSI/CAN/UL325 and CSA C22.2-247.92.

## CMT Dimensions

### Maximum Door Height:

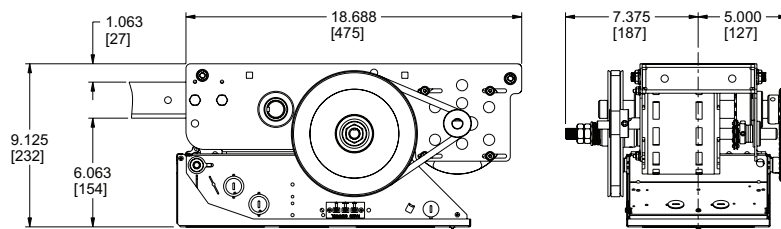
14' (4267 mm)

### Headroom for Tracks:

5" (127 mm) above the highest point of door travel

### Back Room Door Height:

+ 3'11" (1194 mm)



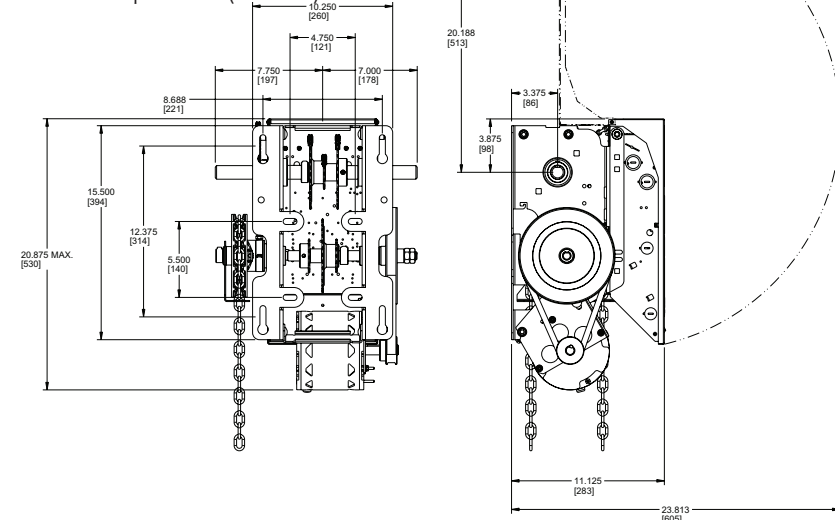
## CMJ & CMH Dimensions

### Maximum Door Height:

14' (4267 mm)

### Clearance:

Side room required 15" (381 mm)



# ControlHoist™ Standard

## Standard Commercial Operator

The ControlHoist Standard is a medium-duty, belt-drive operator, designed for high cycle applications and use on standard to larger size sectional doors, rolling door and grilles. Innovative features, along with durable mechanical design, offer a consistent and reliable performance day in and day out.



## Specifications

**Operation:** Trolley  
Dual Trolley  
Jackshaft with or without Hoist

**Duty Cycle:** 30/hr

**Drive:** Belt

**NEMA Options:** NEMA 1, NEMA 7, NEMA 9 and NEMA 12

**Motor:** Continuous Duty – 1/8, 1/2, 3/4 HP

**Circuit Board:** Solid State Logic with LCD Display

**Power:** 120/240V 1-Phase  
208/240/480V 3-Phase/ 575V 3-Phase

**Brake:** Standard on jackshaft & 3/4 hp trolley models  
Optional on 1/8 & 1/2 HP trolley models

**Wiring Options:** 24V Class 2, On-board Selection

**Radio Receiver:** Optional

**Radio Transmitter:** Optional

**Warranty:** 3 years with purchase of door  
2 years with purchase of operator only

**Raynor Advantage:** Easily configure the correct operator with a door for a total Raynor branded system with an extended extra year of warranty.

CSJ and CST also available

# ControlHoist™ Optima



COH

## Optima Commercial Operator

Designed for larger sectional doors, rolling doors and higher-cycle applications, the ControlHoist Optima is a heavy-duty, gear driven operator that is built with a continuous-duty, overload protected motor with high starting torque. All units feature heavy-duty industrial ball bearings, worm gear drive in oil bath and an electromechanical brake. Innovative features along with durable mechanical design, provide consistent and reliable operation for the most stringent applications.

## Specifications

**Operation:** Trolley  
Dual Trolley  
Jackshaft with Hoist

**Duty Cycle:** 30/hr

**Drive:** Gear

**NEMA Options:** NEMA 1, NEMA 4, NEMA 7, NEMA 9 and NEMA 12

**Motor:** Continuous Duty – ½, ¾, 1, 1½, 2 HP

**Circuit Board:** Solid State Logic with LCD Display

**Power:** 120/240V 1-Phase  
208/240/480/575V 3-Phase

**Brake:** Standard on all jackshaft & trolley models

**Wiring Options:** 24V Class 2, On-board Selection

**Radio Receiver:** Optional

**Radio Transmitter:** Optional

**Warranty:** 3 years with purchase of door  
2 years with purchase of operator only

**Raynor Advantage:** Easily configure the correct operator with a door for a total Raynor branded system with an extended extra year of warranty.

*\*For NEMA 4 & 575V 3-Phase specifications, please contact factory.*

COT also available



## ControlHoist Standard & Optima

### Standard Features

**Entrapment:** UL 325 2010 requires all commercial operators to use constant pressure to close or be equipped with an approved monitored entrapment protection device, such as a monitored photo eye or reversing edge. All ControlHoist Standard & Optima operators are provided standard with constant pressure to close. Up to two (2) monitored entrapment devices can be selected. In addition a non-monitored entrapment device can also be selected.

**LCD (Liquid Crystal Display):** The 16 character LCD display allows for easy programming with an intuitive set up menu. Status indicators provide real-time status and display error messages for easy troubleshooting assistance.

**Cycle Counter:** LCD (Liquid Crystal Display) clearly indicates the exact number of cycles logged for easy maintenance support.

**Programmable Mid-Stop:** Adjustable from 3-30 seconds, this feature enables partial opening of door to a preprogrammed position for energy savings, time savings and convenience.

**Timer-To-Close:** Closes the door automatically after a predetermined amount of time has elapsed, for security and convenience.

**Ventilation Feature:** When a device such as a CO detector is activated, the door will partially open for a pre-determined amount of time. Once the CO detector is clear, the door will close.

**Fire Station Timer:** Ideal for fire stations. A push button or pull cord can be used to activate the open cycle and timer to close feature. Only the push button or pull cord will control the timer to close.

**Motor:** Continuous-duty, overload protected motor with high starting torque.

**Drive Reduction:** Primary reduction is a belt drive. Secondary reduction is by chain and sprocket.

**Electro Magnetic Brake System:** 24V DC brake. Fewer mechanical parts for improved reliability. (The 24V break comes standard on all Optima and Standard models except for the 1/3 and 1/2 HP CST models, they are optional)

**Adjustable Friction Clutch:** Helps to protect the door and operator from damage should it come into contact with any obstruction.

**3-Button Control Station:** Provides open/close/stop functions.

**Exterior Radio Control Terminal:** Provides for fast and easy connection of radio controls. When range is an issue, an optional external mounted radio receiver allows the flexibility for the receiver to be moved to a new location for improved range.



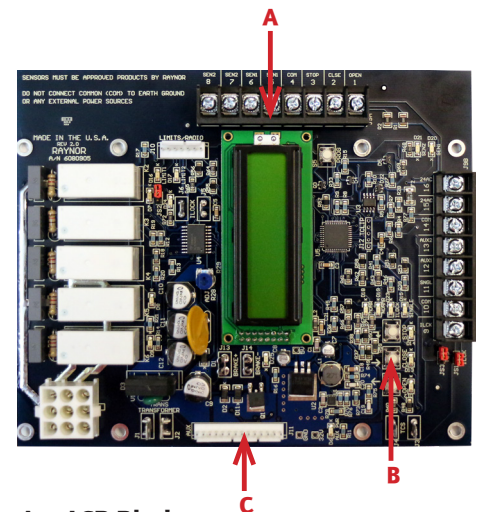
P.O. Box 448, 1101 East River Rd.  
Dixon, IL 61021-0448  
1-800-4-RAYNOR (472-9667)

### Optional Feature

**Auxiliary Contact Board:** Provides auxiliary contacts when the door is in motion and at the open and close limits. The auxiliary board provides but is not limited to the following features:

- Courtesy Light which illuminates whenever the door is activated
- Capability to tie into Horn & Strobes for ADA compliance
- Capability to tie into a Traffic Light to provide safe entering and exiting of the facility
- Security Feature which allows the ability to connect to a facilities security system

### Circuit Board



- A. LCD Display**
- B. On-board 3-button open/close/stop**
- C. Auxiliary Board Harness**

Exclusively Distributed by: