

Dear customer:

Your opinions and suggestions are very valuable and important to us.

Feel free to contact us at any time if you have any questions. We will assist you on using our products.

cs@unitedoupin.com



 **KOMOK®**

Cordless Electric Pruning Shears

User Manual

CE FC

CONTENT

Register Your Order Product Warranty.....	1
Share to Your Social Network,Get Free Blades.....	2
Partnership with Us.....	2
About Us.....	3
Packing List.....	4
Safety Warning.....	4
Product Overview and Specifications.....	5
Check up Before Use.....	5
Operating Procedure.....	6
Packing up.....	6
Charging the Battery.....	6
Cautions for Battery.....	7
Blade Lubricating.....	7
Tightening Blade.....	8
Replace Blade.....	9
Buy New Blade.....	10
LED Display	10
Operations & Maintenance.....	11
Shears Use & Maintenance.....	11
Battery Use & Maintenance.....	12
Work Area Safety.....	13
Human Safety.....	13
Abnormal Situations & Methods.....	14
Other Maintenance.....	14



Register Your Order Product Warranty

We provide 18 months free warranty for the electric pruning shears body, and 3 months free warranty for battery. Please register your order and product in our official website:unitedoupin.com, for your rights protection. If you have any questions during warranty period,please send emails to:cs@unitedoupin.com.

Note: the fixed blade and movable blade are consumables, not included in the warranty.

Share to Your Social Network, Get Free Blades

Would like to get our free replacement blade or battery? It's OK. Use your smart phones, take pictures and videos of using our product, share to your social network! Ask your friends to repost. 10 persons repost, you can get one piece of blade. 30 persons repost, you can get one battery.

Share now and contact us right away:
cs@unitedoupin.com

Partnership with Us

Like our product and are willing to be our sales partner? Have passion to share and promote our product, welcome you to be our partner. When sold by your recommendation, you can get 8% commission from the sales amount. For example, a product sells 289 USD, you can get 2312 USD on every 100 orders. If you have corporate customers for bulk purchase, please contact us to negotiate your sales plan:
cs@unitedoupin.com.

About Us

Dear customers,
Thank you very much for ordering and supporting garden tools product made by United Oupin Corporation.

United Oupin Corporation is established in Shenzhen, we create the fine quality garden tools with spirit of excellence.

The KOMOK brand electric pruning shears is belong to United Oupin Corporation, which is dedicated to serve garden enthusiasts, garden laborers, orchard laborers, nursery laborers. We believe our products will give you convenience, efficiency, and pruning happiness.

KOMOK brand pruners can meet your these needs: fruit picking in orchard, branch pruning in garden, pruning in nursery, or pruning in green belt and roadside, flower trimming, garden hobbies, and trimming in flower shop.

We sincerely expect that you can enjoy the great happiness of garden laboring and superior tools' convenience by using our product. We value your using opinions, and sincerely expect you can share your thoughts and experience with us. Your opinions will be sources of our product improvement.

What's more, we welcome you to share your using experience, photos, videos, with our buyers and fans on social media.

Our Facebook: <https://business.facebook.com/Komok-102899438126609>,
Instagram: KOMOK Pruners, Youtube: KOMOK Electric Pruning Shears, And customer service email: cs@unitedoupin.com.

Thank you again for choosing United Oupin's KOMOK electric pruning shears!
Sincerely
Production and Service Team
United Oupin

Packing List



Electric Pruning Shears Body	X1
Charger	X1
Battery	X2
Hex socket wrench and Allen wrench	X2
The User Manual	X1

Safety Warning

A. Please use the product strictly according to the manual. Otherwise, the consequences of a serious safety accident shall be by the owner.

B. The blades are very very sharp, be very careful and keep concentration, in case of accident.

C. The blades are very very sharp, juvenile and children are prohibited from touch and use. Otherwise, the consequences of a serious safety accident shall be by the owner.

D. Keep the manual for frequent reference, pay attention to all warnings and illustrations.

E. Use with caution if you have poor eyesight.

Product Overview and Specifications

The product is lithium battery-driven electric pruning shears, comprises of fixed blade, movable blade, lithium battery, battery charger, and other components. It is used for pruning 30MM or smaller branch and shrub in orchards, vineyards, gardens etc. Simple and easy to operate, and 8-10 times the efficiency than traditional manual pruners. Pruning effect is significantly better as compared to manual pruners.

Product Specifications

Model	JYH-606
Voltage	DC. 21 V
Cutting Capacity	30mm
Max Power	600W
Size	280*114*64mm
Battery	JYH-300
Voltage	21V
Power	42Wh
Charging Time	1-2h
Operating Time	3-4h
Size	116*74.5*42.5mm

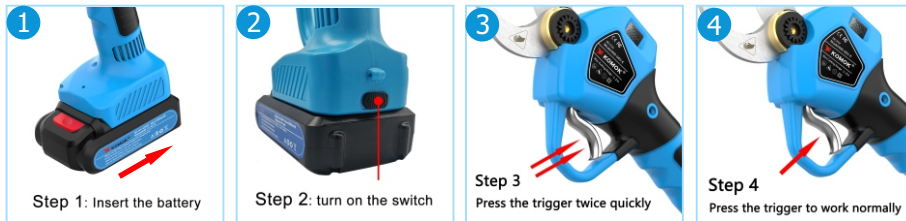
Please read through all safety warnings and instructions carefully. If you don't follow warnings and instructions may result in electric shock, fire, serious burns and other accidents.

Do not use or exposed electric pruning shear and battery pack in raining weather.

Check up Before Use

- (1) Please make sure the battery is fully charged before using.
- (2) Always remove the battery from the pruning shears for all operations. **MOST IMPORTANTLY, REMEMBER TO DO SO WHEN REPLACING BLADES, SHARPENING OR LUBRICATING.**
- (3) Check the blade is correctly tightened before using.

Operating Procedure



- (1) Insert the battery pack into the power connector of the pruning shears ①.
- (2) Switch the pruner shears power switch ON. The LED indicator will turn green and the pruning shears will beep twice ②.
- (3) Pull the trigger twice quickly. If the blades were closed, they will open, the pruning shears will beep once and will be ready to cut. If the blades are already open, the pruning shears will simply beep once ③.
- (4) Pull the trigger to cut. Release the trigger to open the blades. Do this several times initially to ensure proper operation ④.
- (5) If the pruning shears fails to make a complete cut, release the trigger, then pull and hold the trigger a second time.
- (6) The default blade opening is for a LARGE cuts. To reduce the blade opening for SMALL cuts and conserve battery life, pull and hold the trigger for 4 seconds until the pruning shears beep once. The blade opening will reduce for SMALL cuts. To restore the blade opening to LARGE, pull and hold the trigger for 4 seconds again until the pruning shears beep twice.
- (7) After 2 minutes of non-use the pruning shears will beep once as a reminder. After 6 more minutes the pruning shears will shut off to conserve battery life. To restore operation, switch the pruner shears power switch OFF and return to step 2.

Packing up

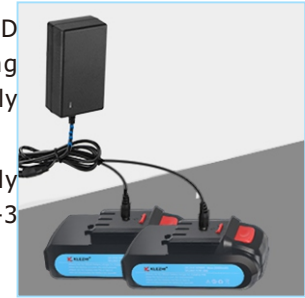
- (1) Pull and hold the trigger. After 4 second the pruning shears will beep once or twice. After 2 more seconds the pruning shears will beep once and the blades will close.
- (2) Remove the battery from the pruning shears.
- (3) Clean up and pack the pruning shears and battery into the tool box.

Charging the Battery

It is recommended to charge new battery before first use of the electric pruner. Plug the battery charger output into the battery charging jack then

Plug the charger into power socket. The LED indicator on the battery will turn RED during charging and turn GREEN when the battery is fully charged.

The battery takes about 1-2 hours to be fully charged. A fully charged battery can sustain 2-3 hours of continuous pruning operation.



Cautions for Battery

- (1) During charging, it is normal for the charger and battery to be warm.
- (2) If the battery is not use for a long period of time, it's recommended to charge the battery once every 3 months, this is to ensure the battery life is not affected by low usage.
- (3) For new battery or battery unused for a long time, it will need about 5 charge-discharge cycles before achieving full capacity.
- (4) Do not recharge a fully charged battery just after a few minutes of usage, this will reduce the battery life and efficiency.
- (5) Do not use a damaged battery and disassemble the charger or battery.
- (6) Do not place battery near high temperature heat source, the battery will explode in fire or long exposure to high temperature heat source.
- (7) Do not charge the battery in outdoor or humid environment.
- (8) It is normal for the pruning shear to reduce cutting diameter when the battery capacity is getting low.
- (9) Do not use the pruning shear during charging. It must be disconnected from the battery during charging.
- (10) Do not store the battery in a humid environment.

Blade Lubricating

For all the operations you must remove the battery from the pruning shears. Lubricate at least twice per day. For correct lubrication, the pruning shear blade must be open.

(1) There is an oil filling port on the front side of the pruning shears.

(2) Place the oil bottle in the lubricating port. Hold the oil bottle up-right and then lubricate.



(3) Operate the pruner several times, make the lubrication is well-proportioned.

The best oils to use are mineral oil or Canola oil, You can use them to lubricate it.

Tightening Blade

For all the operations you must remove the battery from the pruning shears. Check the blade tightening before use. A well tightened blade should not move from left to right.

Adjust the tightness:

- (1) Loosen the locking screw using the Allen wrench "1".
- (2) Using the hex socket wrench, make sure the tightening nut is hand tight "2". Do not over tighten.
- (3) Tighten the locking screw using the Allen wrench "1".
- (4) Check the tightness again using the above procedure.



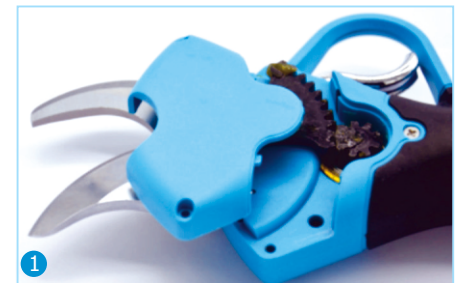
Note1: It is possible to have a slight movement in the direction of blade closure. This movement is normal and may be caused by the gap between the rack and pinion teeth.

Note2: Don't tighten the screws too tightly, keep it with suitable /fittest tightness.

Replace Blade

For blade replacement you must remove the pruning shears battery. The replacement process is performed on the reverse side of the pruning shears.

- (1) Use the Allen wrench to remove the two cover screws and remove the cover "1".
- (2) Use the Allen wrench to remove the locking screw "2".
- (3) Again using the Allen wrench to remove locked screw nut "3", and remove Anti-slide shim.



(4) Turn the reverse side of the scissors and hit the blade (moving blade) with a tool (Note: In order to prevent the blade from loosening, the blade will be difficult to remove). "4"

Remove the blade, Replace the blade "5".





(5) If necessary, clean around the pinion (warning: do not use chemicals).

(6) Fit the new blade on the pruning shears.

(7) Fit Anti-slide shim then screw and adjust the tightness of locked screw nut until the tool clicks.

(8) Fit elastomer washer on screw and tighten it.

(9) If necessary, lubricate the blade teeth using graphite grease "8"

(10) Fit cover on the pruning shears and screw both screws.



Buy New Blade, Battery & Accessory

You can buy the replacement blades, battery pack and other accessories in our official website: unitedoupin.com, as well as our KOMOK official Amazon store. Please make sure it is the KOMOK brand and the blade size.

LED display

LED Display: show surplus electricity quantity, cutting times. It will better show your every day garden workload. It is convenient for users to understand the usage status of pruning shears and arrange working hours reasonably.



Operations & Maintenance

Shears Use & Maintenance

1. Do not cut branches beyond diameter of 30MM, do not cut hard items such as metal, stone or any other non-plant materials. If you cut hard items or diameter of exceeding 30MM, may result in fire accident, battery damage, or other serious safety harm. If the blades are worn or damaged, please replace the blades.
2. Keep the pruner clean, use a clean cloth to clean the pruner, battery and charger (do not use any abrasive or solvent-base cleaning material), use a soft brush to clean the dust off the pruner head.
3. Do not immerse the pruner, battery or charger in any liquid.
4. Follow instructions as given for proper use of the pruner, do not use the pruner when itself, battery or charger is damaged.
5. Do not use the pruner if it can not operate or shut down properly, send for repair immediately. It is dangerous to use the pruner when the tool could not operate or shut down properly.
6. Please ensure the pruner is powered OFF during any adjustment, changing accessories or storage. This protective measure aims to reduce the risk of accidental pruner activation.
7. Please ensure the blades are closed when not in use. Storage of the pruner must keep out of reach from CHILDREN, do not allow any person who is not familiar with the pruner operation or instruction to use, it is dangerous to use the pruner without proper training and understanding.
8. The use of the pruner must comply with instructions stated in this manual and methods of use as well as taking in considerations of the working environment and nature of work undertaken. The use of the pruner not within its stated capability and specifications is dangerous.
9. Remove all dirt from the moving and fixed blades after each use. Apply lubricant on the blade side where both moving and fixed blade intersected. This will ensure the blades are maintained in good conditions and reduce resistance during use, prolong the pruner and blade lifespan.

Battery Use & Maintenance

1. Do not charge battery with ambient temperature below 32° F(0°C) or above 113°F(45°C).
2. Please ensure the battery is switched off before connecting the power cord to the battery.
3. Only use battery charger as supplied together with the pruning shear by KOMOK, the use of any other charger not matching to the charging specification of the battery may cause fire.
4. Items such as paper clips, coins, keys, nails, screws, or any other conductive items must be kept away from battery when not in use.
5. Do not disassemble the battery.
6. Do not short-circuit the battery.
7. Do not use the battery beside heat source.
8. Do not put the battery in fire or in water.
9. Do not charge the battery near fire or under direct sunlight
10. Do not insert nail into the battery, hammer the battery, stamp the battery, throw the battery or any other form of shocks to the battery.
11. Do not use battery that is damaged or deformed.
12. Do not perform soldering or welding on the battery.
13. Do not reverse direction of charging battery, reverse polarity of connections or excessive discharge of battery.
14. Do not connect the battery to charging outlets or car cigarette lighter.
15. Do not use the battery on equipment other than the designated pruner.
16. Do not direct contact with lithium cells in the battery.
17. Do not place the battery in microwave, high temperature or high pressured vessel.
18. Do not use the battery that is leaking.
- 19. Keep the battery out of reach from CHILDREN.**
20. Do not use or place the battery under direct sunlight (or in vehicle that are under direct sunlight) that will cause the battery to overheat or shorten the battery lifespan.

21. Do not use the battery in electrostatic environment (above 64V).

22. Do not use battery that is corroded, with unpleasant odor or unusual appearance.

23. If the skin or clothing comes into direct contact with battery fluid, wash with clear water immediately.

24. Maintain the battery fully charged when the pruning shear is not used for a long period of time.

Work Area Safety

1. Keep work area clean and bright, messy and dimmed workplace may cause accidents.
2. Do not use the pruner in explosive, inflammable or humid environment.
3. Keep CHILDREN and bystanders away before operating the pruner to avoid accidental injury due to distraction.

Human Safety

1. Keep alert while using the pruning shear. Do not operate the pruning shear when you are tired or under the influence of drugs or alcohol.
2. Use protective devices, always wear safety goggles as well as other safety tools such as dust mask, anti-slide boots, helmet and hearing protective devices that will reduce the risk of injury.
3. Before powering ON the pruning shear, ensure all adjusting tools and spanners are removed. Tools left on the rotating parts of pruning shear may result in injury.
4. Do not over stretch hands when operating the pruning shear, keep both hands away from cutting area. Do not place your hands beneath the branches, ensure the surface and under-side of the branches do not have any material that can be damaged by cutting edges. Always maintain your body balance and in control of pruning shear in any situation.
5. Dress appropriately, do not wear loose clothing or jewelry. Keep hair, clothing and sleeves away from the pruning shear. Loose clothing, accessories and long hair may be entangled with the moving parts of the tool.

Abnormal Situations & Methods

1. If the pruning shear is not able to cut through an object, release the trigger immediately and the moving blade will return to its open position automatically.
2. If the pruning shear is cutting through a branch of particularly hardness, release the trigger immediately and the moving blade will return to its open position automatically.
3. If the battery is not charging properly, please ensure the supply voltage to the charger is same rating as the specification of the charger.
4. In the event of electric or mechanical malfunction, power OFF immediately.
5. Operating not following instructions in this manual may result battery fluid leakage, do not touch the leaked battery fluid. If accident! contact with battery fluid, clean with clear water immediately. If the battery fluid touch your eyes, wash with clear water and must seek hospital assistance. Fluid from leaked battery may caused irritations or burns.

Other Maintenance



unitedoupin.com
Register Warranty

The manual paper printing language is English, French, German, if you need other languages version, please send us email: cs@unitedoupin.com, we will send you the PDF manual file for you.



KEEP CARD

Purchase item Product Model

Order Number Warranty period

Customer name Phone

Street address

Zip code

Seller stamp



WARRANTY CARD

Purchase item Product Model

Order Number Warranty period

Customer name

Seller name

Seller Tel

Street address

REMARKS

- This warranty card only can be applicable to the product model of the warranty service.
- Dropped in water or man-made damage is in not the scope of warranty.
- Please keep this card, Present this warranty card and valid invoice when damaged.
- This card shall be valid from the date when it is signed by the seller.

cs@unitedoupin.com