

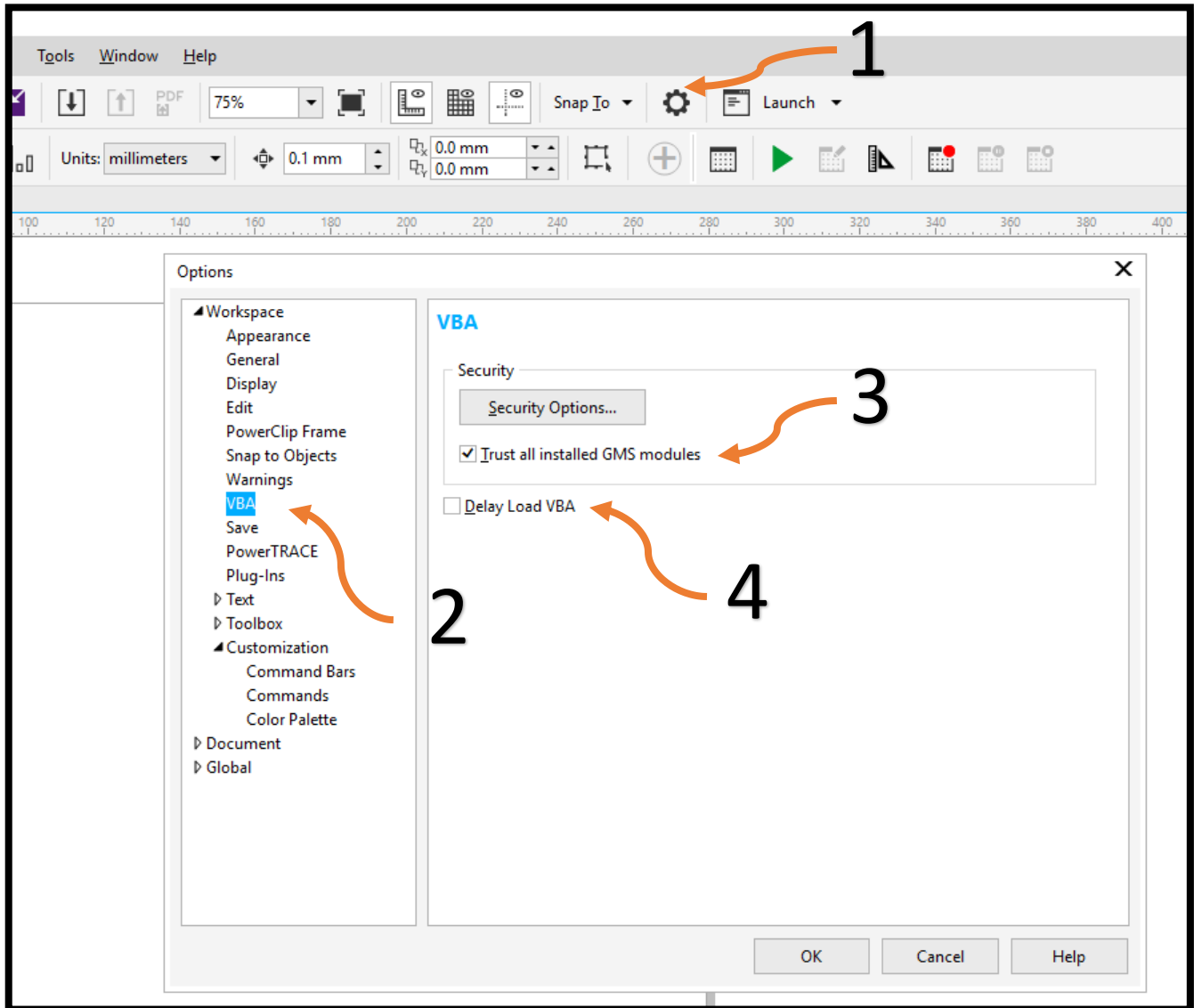


Corel To Rdworks Macro

608 Trestle Point
Sanford, FL 32771
Phone 888-652-1555 • Fax 407-878-0880

To install the Corel draw macro, you must have Corel draw already installed on your computer and then you will:

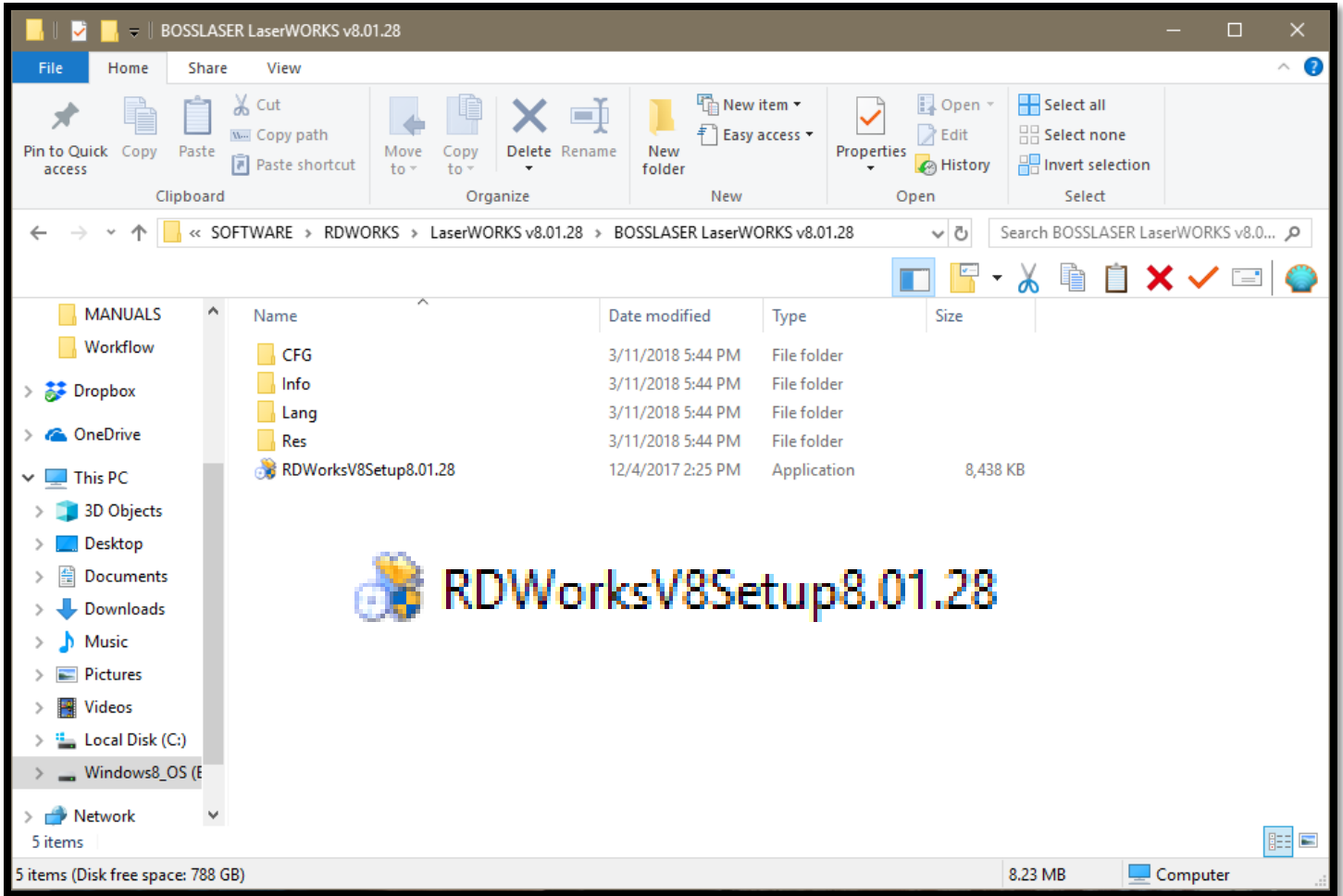
1. Open your corel draw and go to the options tab, click VBA and make sure “Trust all installed GMS modules” is checked, and “Delay Load VBA” is unchecked.



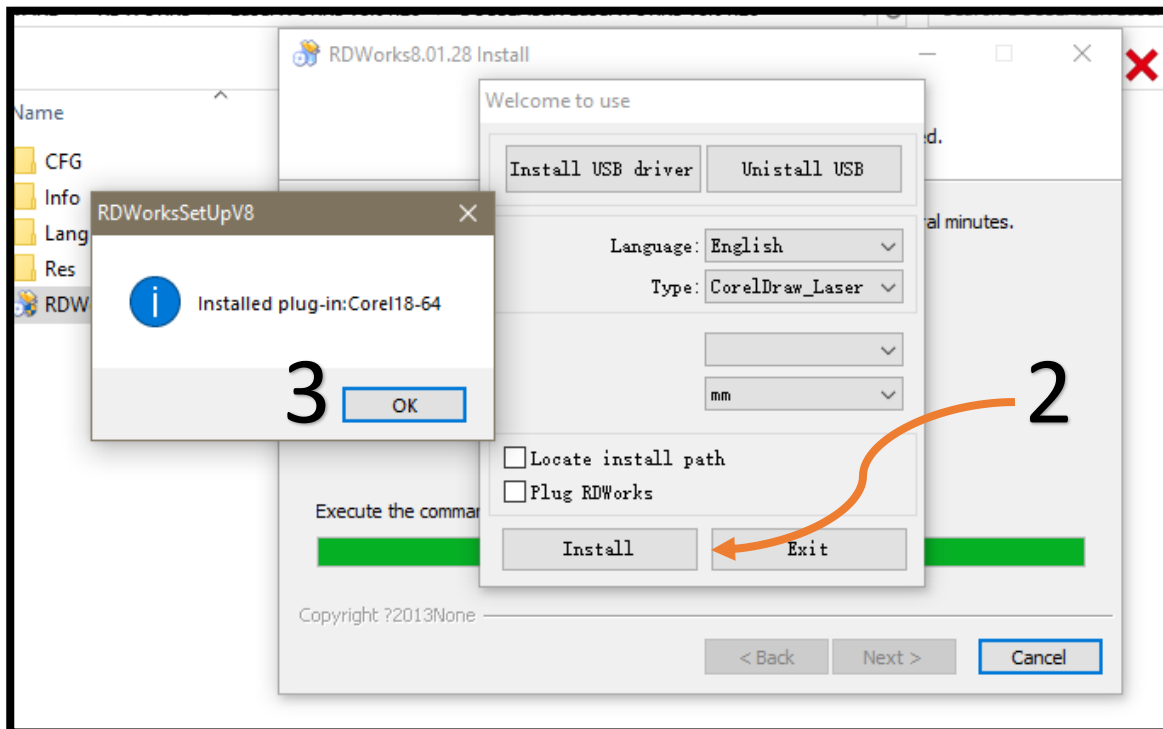
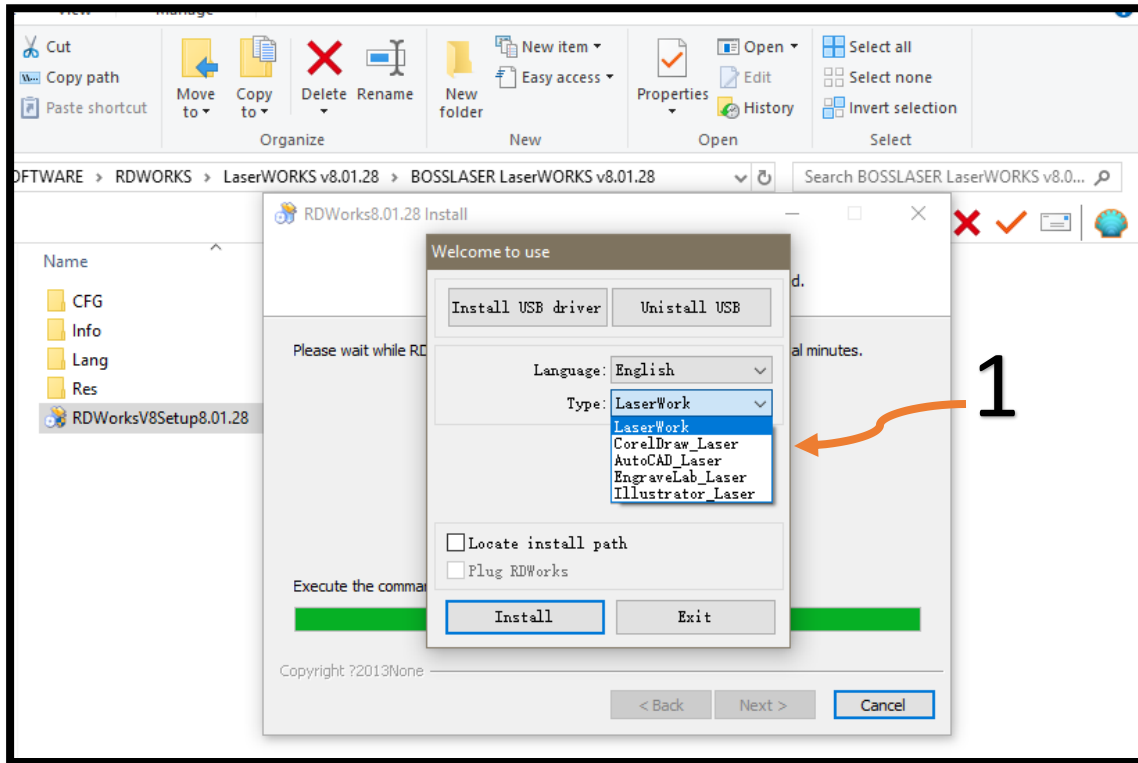
2. From here you will need to click the “OK” button on the bottom of the options window and shutdown Corel Draw.

3. From here you will need to locate your RDworks Version 28 installation folder.

It is very important that you are using version 28.

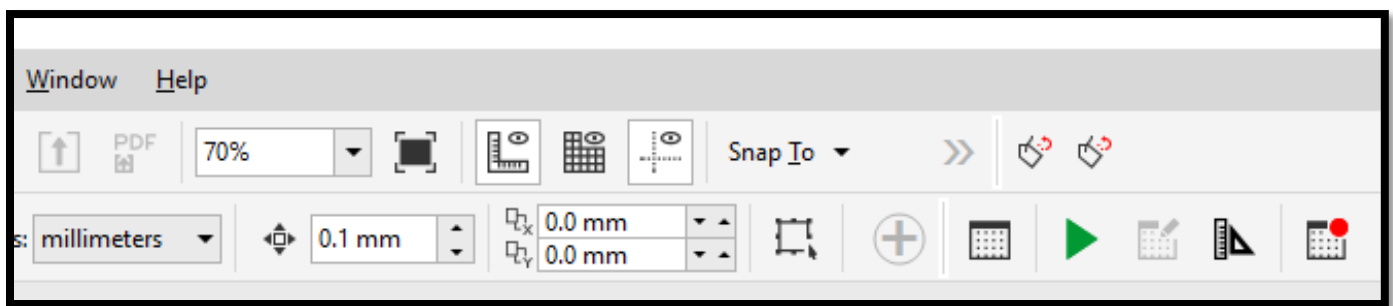
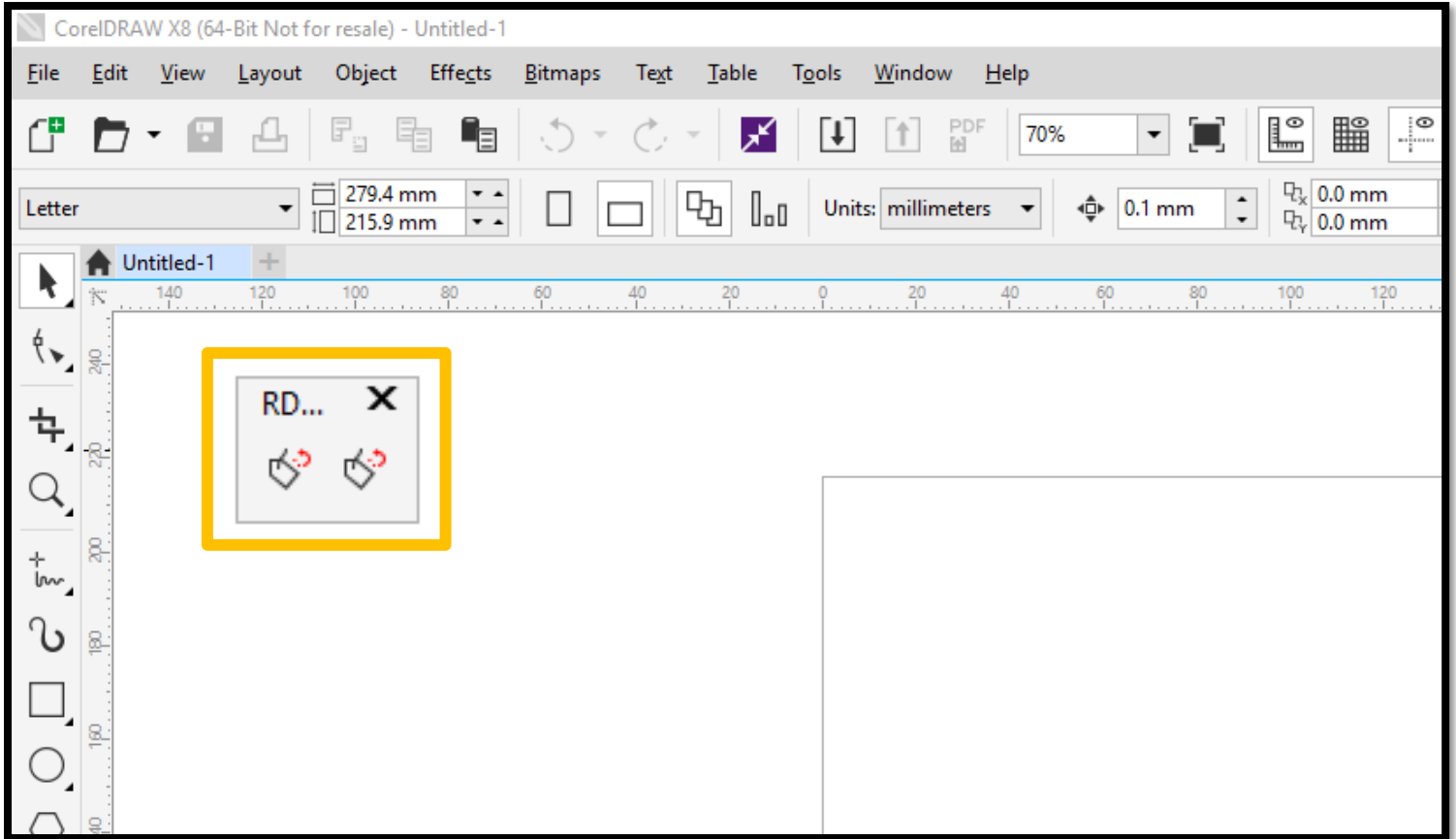


4. You will be double clicking on the "RDWorksV*Setup8.01.28" application to run the installation.
5. When going through the installation of Rdworks you will want to install it regularly if you haven't already. If you have Rdworks already installed on the computer we are ready to go straight to installing the Macro for Corel Draw.
6. To install the Macro we will need to click on the "Type" drop down and change it from "LaserWork" to "CorelDraw_Laser" and then we will hit the "Install" button at the bottom left of this window.



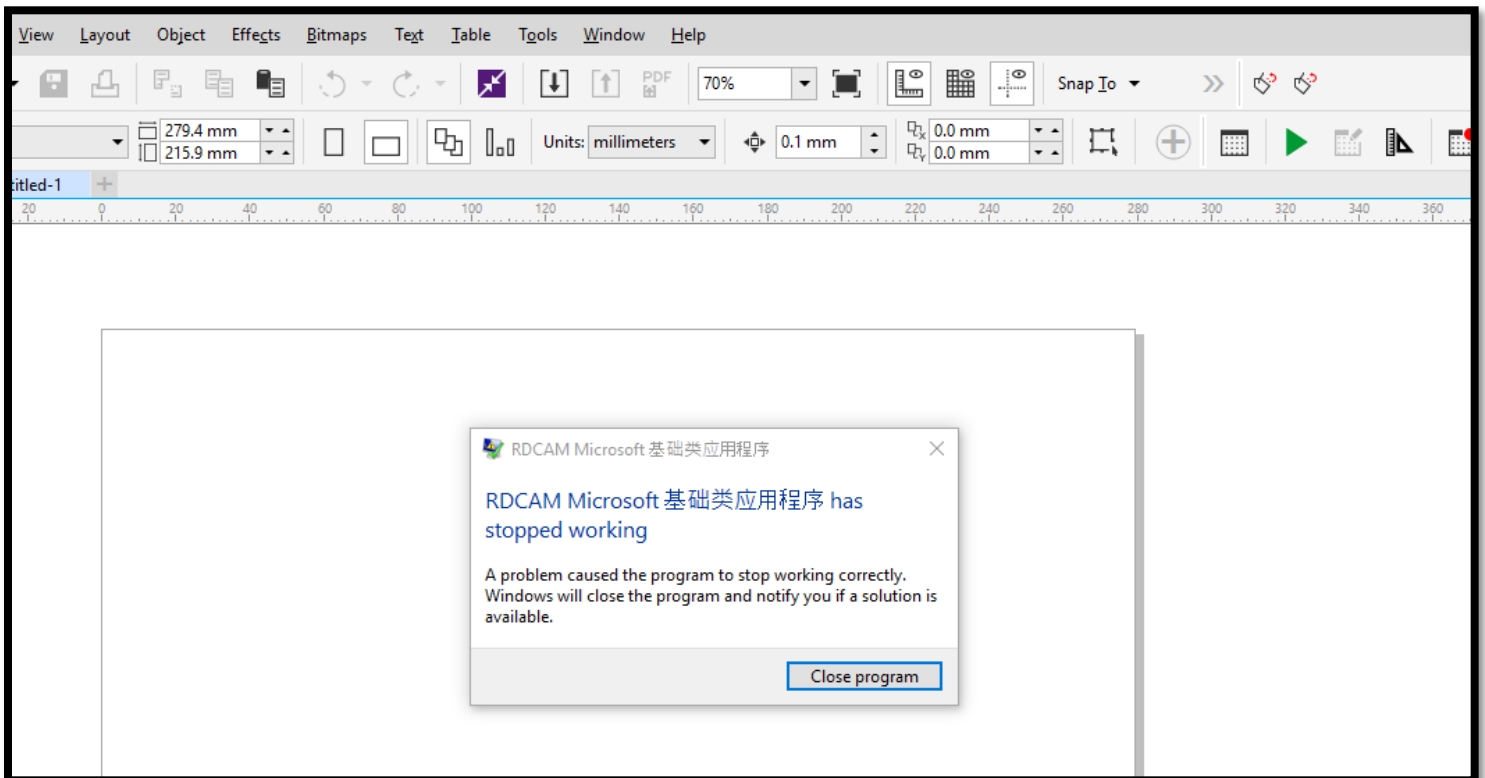
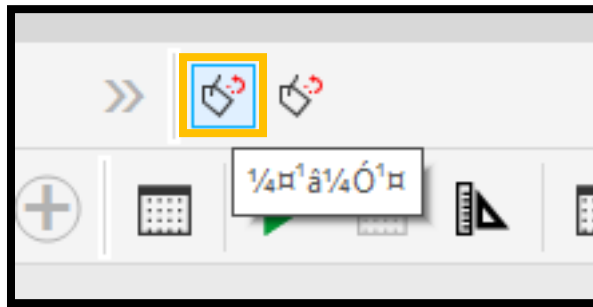
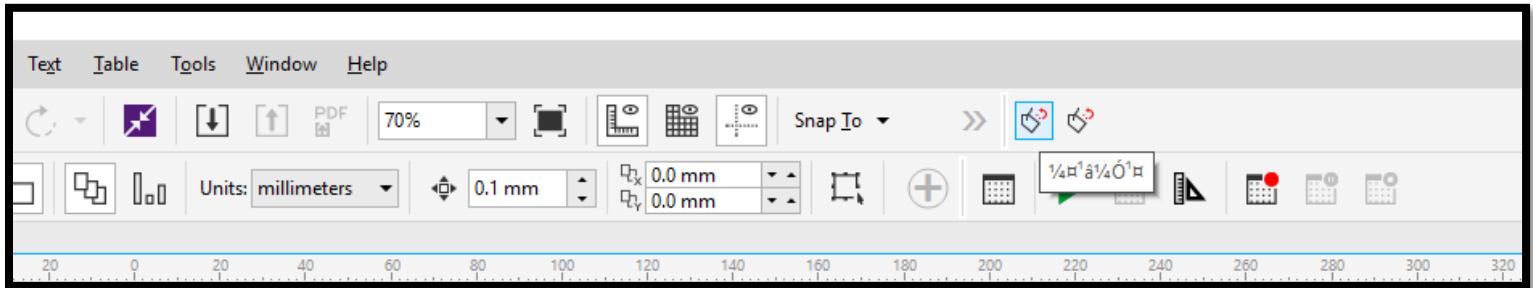
*****If you do not see the RDWorksSetUpV8 window pop up then you will need to skip to page 9 of this document*****

7. After hitting the “Install” button we should see the new window pop up and if installed properly it will say “installed plug-in:Corel18-64”
8. From here we can open Corel Draw and we should see a new set of icons/buttons that we will need to click and drag over to our tool bars.

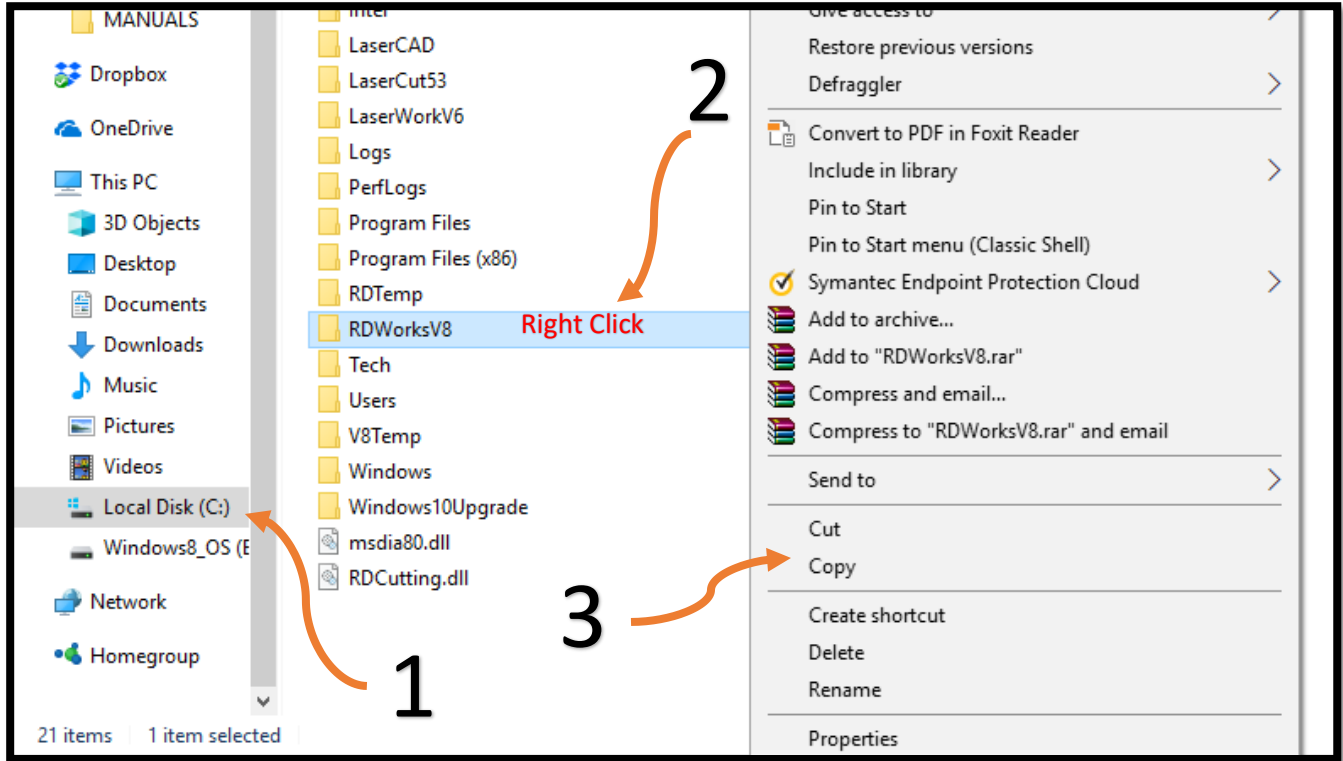


9. Now that we have our macro button placed on our tool bar at the top we can see if the macro is going to work as there may potentially be one more step we must complete.

10. If you go to send a file using the macro and you hover over it and there are symbols then there is good chance that we will have to do one final step. We recommend trying to send over an image to see if it gives you an error message. To do this, use the button on the left-hand side.



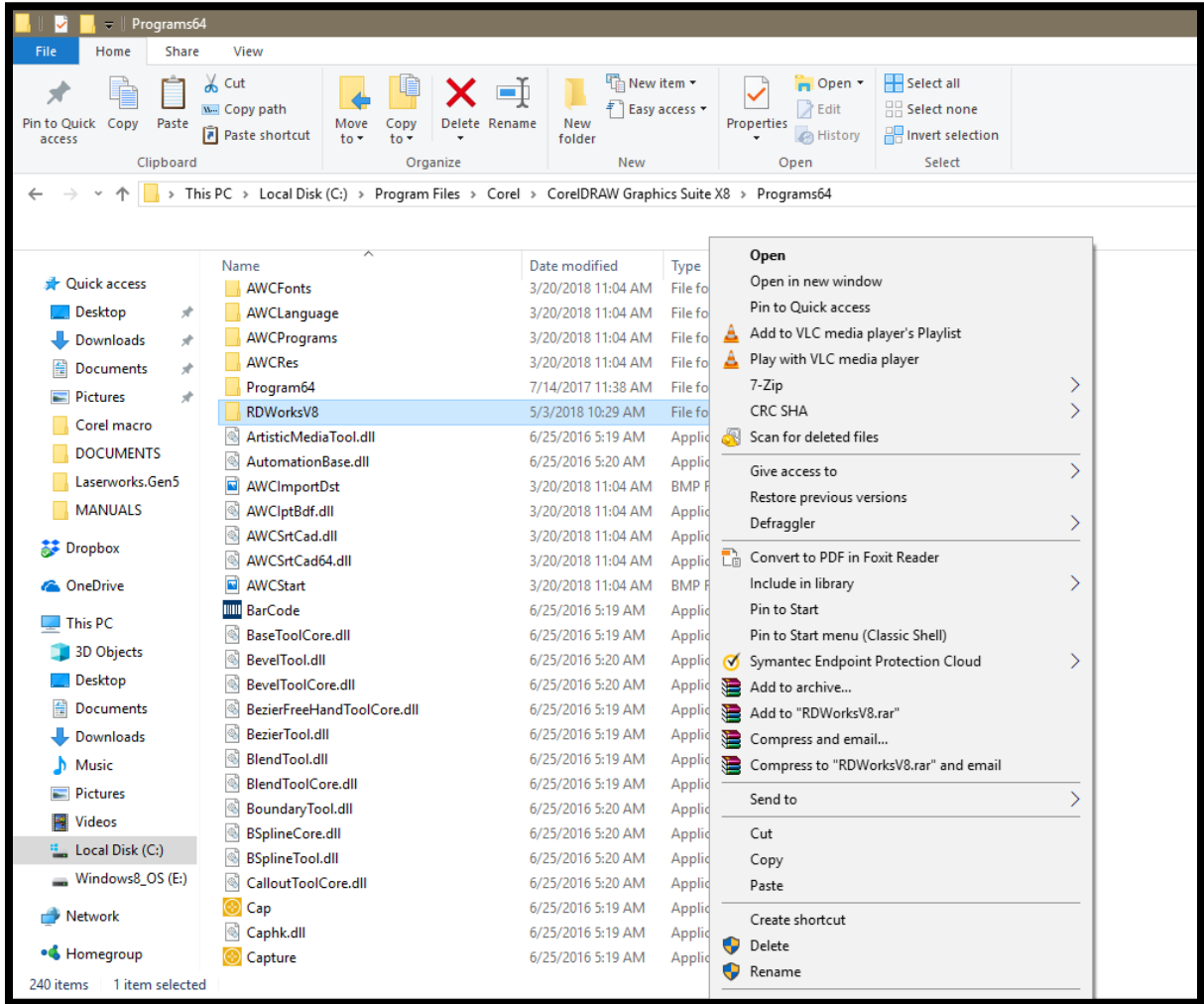
11. If you get an “RDCAM Microsoft has stopped working” message we must close Corel Draw.
12. You will open your file explorer and go to your local disk (C:) drive, it should be alphabetical and when you find “RDWorksV8” you will right click on it and click “copy”.



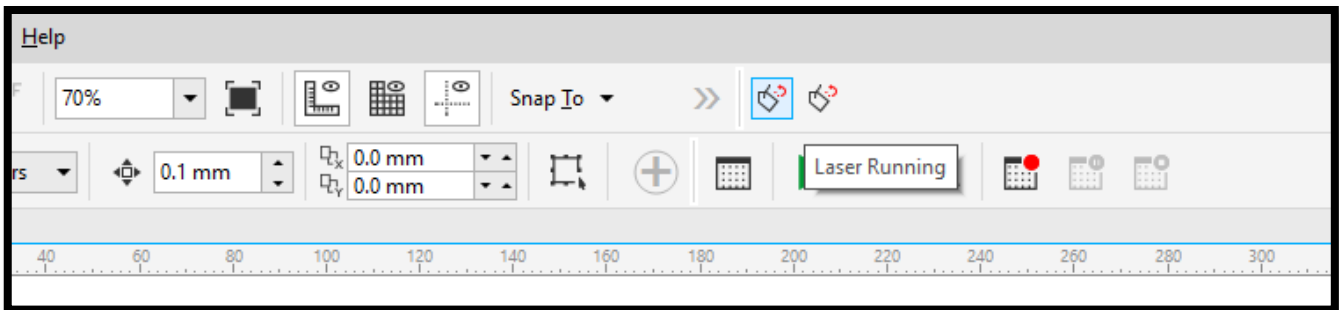
13. With the RDWorksV8 file now copied we will go into the Local Disk C drive> Program Files>Corel>CorelDraw Graphics Suite X8> Programs 64



14. Now that we are in Programs 64, we will right click on the RDworksV8 folder that is there and delete it from that folder completely.
15. With the RDWorksV8 folder deleted we will right click on the screen and paste the RDWorksV8 folder that we copied earlier and close out the file explorer window completely.



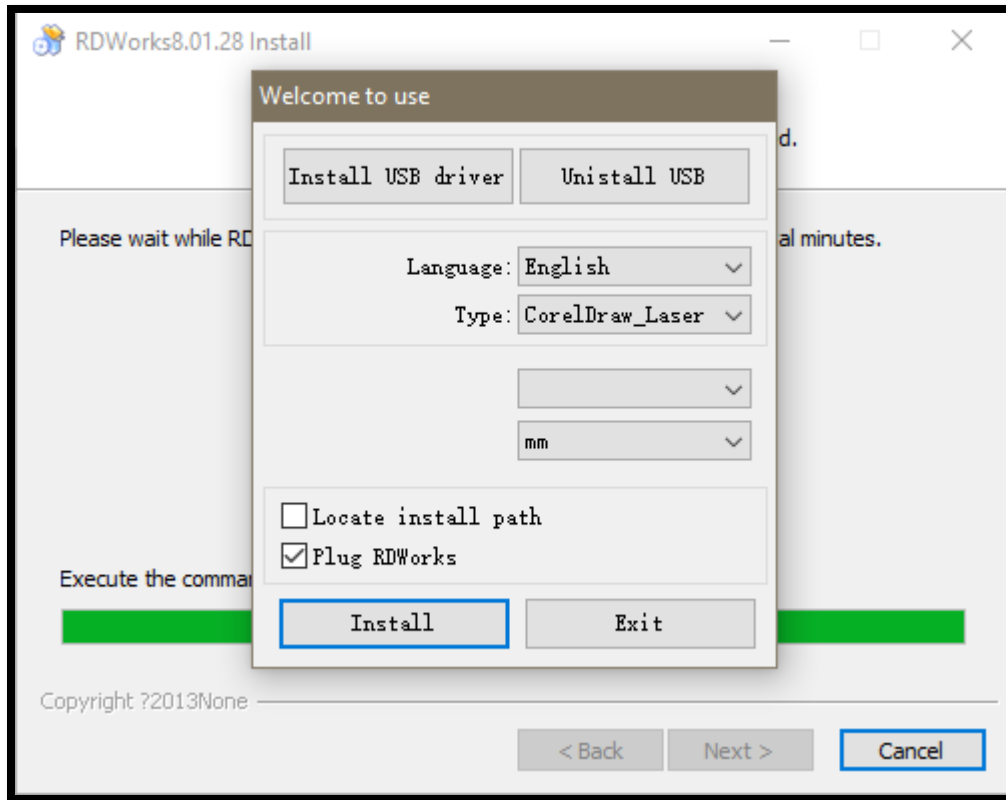
16. After you close out of File explorer you will open CorelDraw, and if you hover over the macro icons again, it should now say “Laser Running”, hit this button with an image on your screen and it should successfully open RDworks and send the file for you.



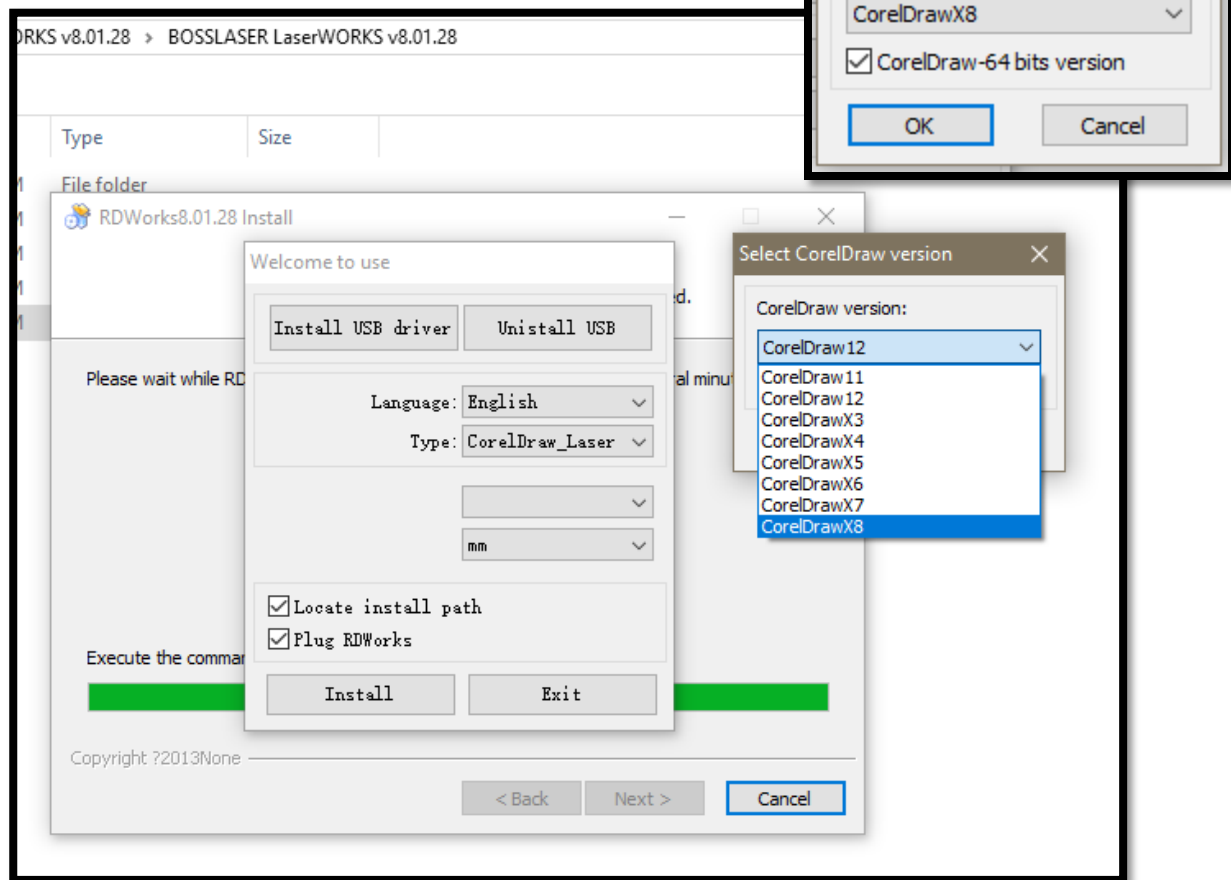
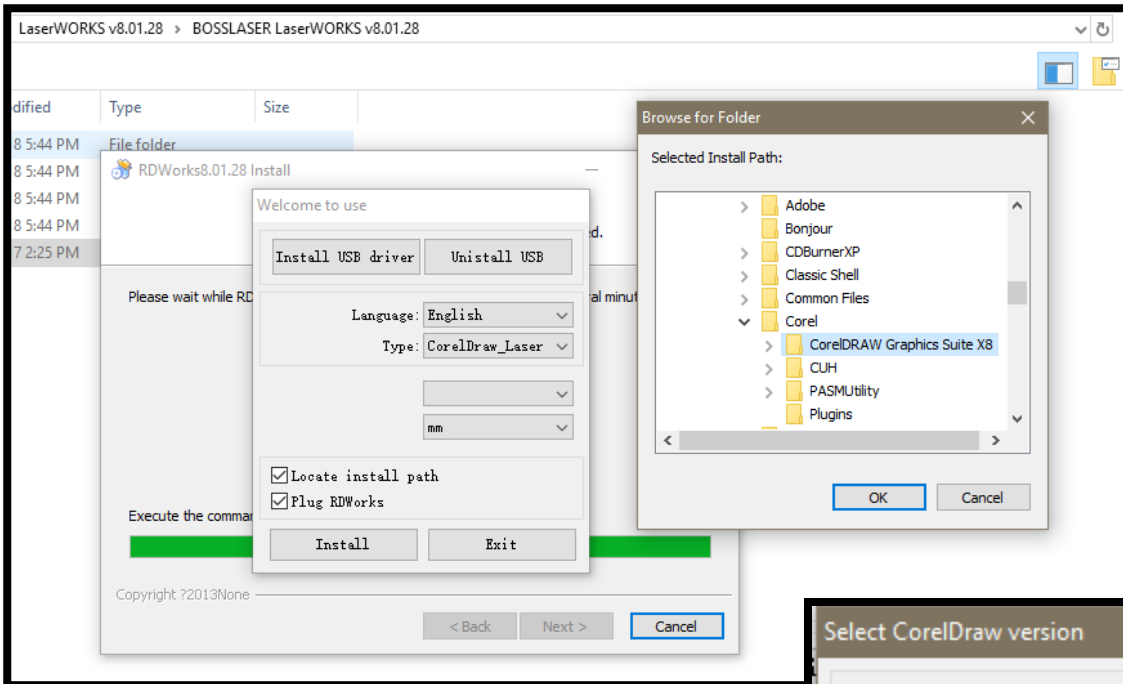
*****Now that the Macro has been tested and worked successfully you are completely done with the installation*****

If you receive an installation failure while trying to install the macro then please follow the steps below.

1. If you receive an installation failure message the first thing to do would be to check box the “Plug RDWorks” selection on the “welcome to use” window during the RDWorks installation.



2. After checking this box, you will hit the “Install” button and you will either get a successful installation of the macro or another error message. **If it installs successfully you will pick back up on page 5 of this document OR If you receive another error message continue with the steps below.**
3. If you receive another error message then you will check both the “Plug RDWorks” and “Locate install path” check boxes and you will hit “Install” at the bottom left of the window.
4. After hitting install a new window called “Browse for Folder” will appear. Here you will need to go to your Local Disk (C:) Drive> click on program files> corel> and simply click once on “coreLDRAW Graphics Suite X8” to highlight it.
5. Once this is highlighted click on the “OK” button, and it will open a new window called “Select CorelDraw version” If you are using Corel Draw X8, 2017, or 2018 you will use “CorelDrawX8” for the older versions you will just match your version type to the selection available. Make sure the “CorelDraw-64bits version” is checked if available.



6. If at this point you hit the install button and it is successful you will go back through the document starting at page 5 and follow the remaining steps.

- *If at any point during the installation of this macro you receive a runtime error message when opening your CorelDraw this is strictly a nuisance and will not cause issues with either CorelDraw or RDworks.*
- *This error message is caused by overlapping macros during the installation and will only go away if you remove the macro completely.*
- *You may be able to uninstall CorelDraw, go through this document on a fresh install and avoid any runtime errors that may occur.*
- *If at any point any of the steps provided do not allow for you to successfully install the macro then please reach out to the Tech Support team at techsupport@bosslaser.com or via phone at 888.652.1555*
- *Having teamviewer installed for us and ready to go will help us help you as soon as possible, you can download this at www.teamviewer.us or it may also be on the flash drive you received with the laser machine.*