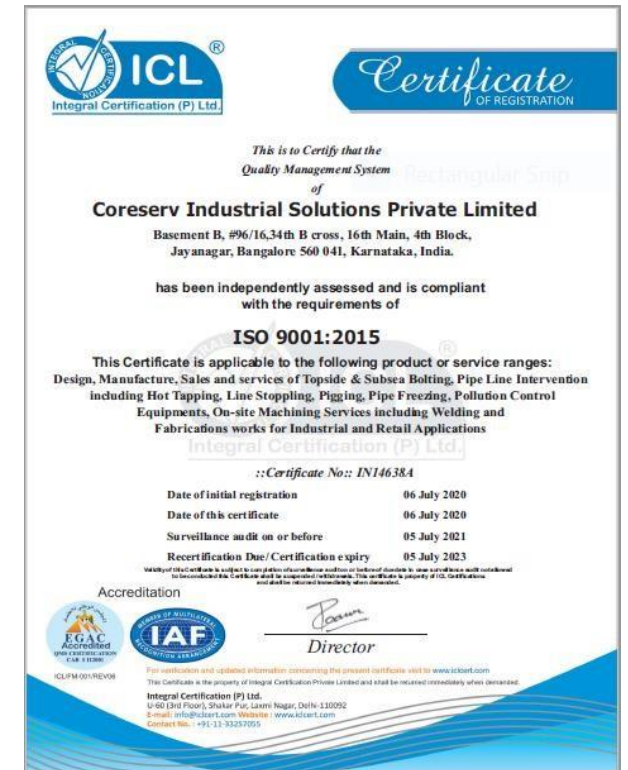


CORESERV INDUSTRIAL SOLUTIONS PVT. LTD

Company Profile & Portfolio



Company Mission

To provide comprehensive technical & application engineered solutions for myriad industrial needs covering areas of joint integrity, Jacking and On-site machining with an in-situ approach and add productivity through concept driven approach

To support customers with design, development and supply of special purpose machines, provide equipment rehabilitation services

Promoter's Profile

The company is managed by a team of professionals from diverse international background with an able board of Directors

Murali Narasimhan – Managing Director

A chemical engineer and an MBA with over 27 years of experience in international markets spread over 20 countries, focused in creating engineered solutions in O & G sector, power-gen and renewables sectors

Spent 25 years in the same industry managing sales and marketing efforts of leading multinational companies, created several greenfield operations with strong P&L leadership and significant growth record, developed customer intimacy through the service driven approach

Most of the experience has revolved around developing international markets, setting up green field operations spanning over 22 countries in ME and APAC and South Asia regions, leading Multinational organizations with P&L and leadership responsibilities

Launched several brands, in international space, set up 4 new businesses with comprehensive service setups involving capex build, notable ROC in Middle East, APAC and South Asia regions

Started India operations for Hydratight in 2011, created a profitable and strong base operation with 6x growth in 6 years with a focus on providing customers with a wide basket of offerings and a strong after sales service ethos.

Coreserv Industrial Solutions Portfolio Summary

Equipment Rental

**Topside Torque &
Tension Tools**

**Subsea Tensioning
Equipment
(1" to 4" bolt Diameters)**

**Rental of high pressure
power packs**

Services

Pipeline Intervention

Hot Tapping

Line Stopping

Pipe Freezing Services

Mechanical Services

Wide range of

In-situ Machining

Mechanical Fabrication

special welding

Welders training

Others

Special purpose machines

Hot tapping machines

Fittings & leak sealing clamps

Equipment Rehabilitation services

High Pressure Hydraulic Tools Services.

**Pressure Gauge and
Torque Tool Calibration**

Coreserv Industrial Solutions Portfolio Summary

Texol

**Incinerators/Scrubbers/
Acoustics/ Chimneys**

BOLTIGHT – UK

**Echometer –
Ultrasonic Bolt load
measurement Services**

DPK Diesel Gensets

**5 KVA to 25 KVA is with
ESCORTS ENGINE.
30 KVA to 160 KVA with
VOLVO EICHER ENGINE
200 KVA upwards till 2500
KVA with BAUDOUIN
ENGINE.**

Welding and Fabrication

We are specialized in Welding processes like:-

1. Manual Metal Arc Welding (MMA)
2. TIG Welding (GTAW)
3. MIG Welding (GMAW)
4. Flux cored arc welding (FCAW)
5. Plasma Arc Welding (PTA)

Our specialized team of welders are well trained and highly capable to handle the materials like:

- **MS & CS:** IS 2062, SAILMA-350-HI, EN-8, EN-9, EN-24 etc.
- **STAINLESS STEEL:** 304L, 308L, 309L, 310L, 312, 321, 316L, 347, 410, 412 etc.
- **DUPLEX SS:** AISI 2205,
- **SUPPER DUPLEX SS:** AISI 2507
- **LEAN DUPLEX SS:** AISI 2304
- **ALUMINIUM ALLOYS:** 6061-T6, T4, 6013, 6111, 4043, 4047, 4145, 5356, 6082 etc.
- **DIE WELDING:**
- **HOT DIE STEEL LIKE:** H-11, H-13, H-19, H-21 **HCHCr Steel:** - D-2, D-6,
- **SHOCK RESISTANCE STEEL:** S-7, and
- **OTHER SPECIAL MATERIALS:** Inconel, Stellite-6, Stellite-12, Stellite-21, Nimonic-SU 263, SU 718, Ni 75, Ni 80, CUNi-90:10 & 70:30, Aluminum Bronze and Titanium etc.

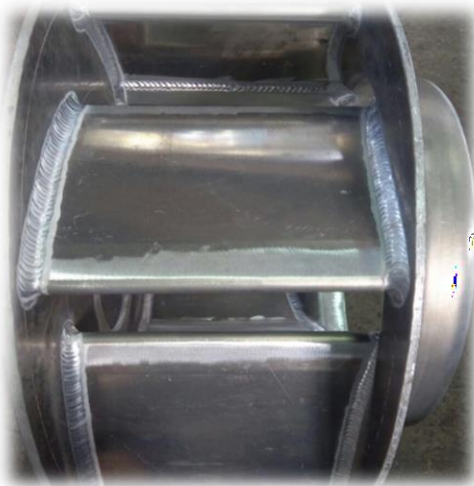
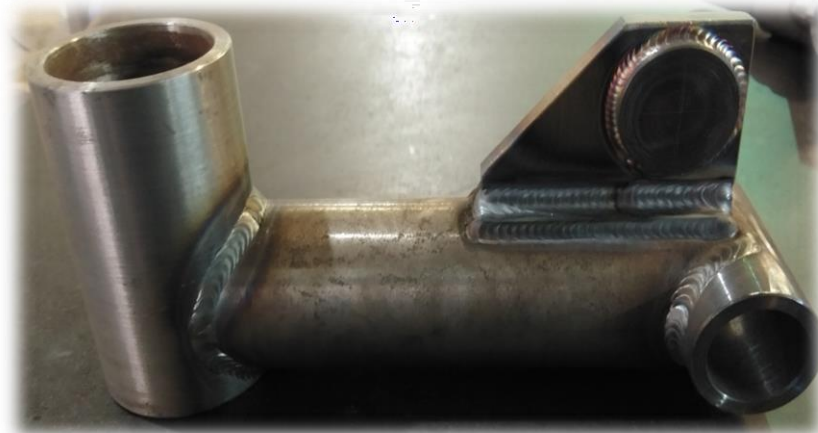
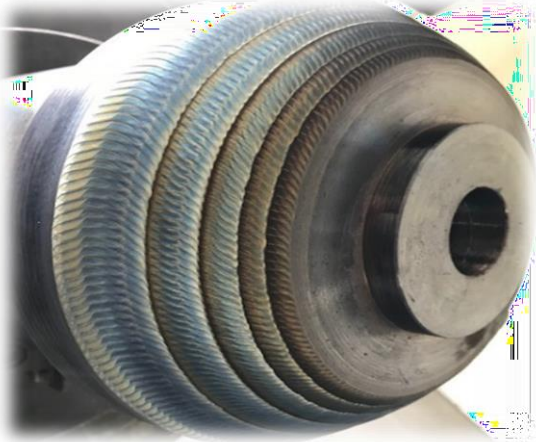
In-Service Welding is a specialized welding on a piping system that is flowing and/or under pressure.

The following considerations are given in a In-service welding process :

- ★ Risk of welding arc causing breach in the pipe wall allowing the contents to escape (burn-through).
- ★ Integrity of Carbon steel piping system following welding, since weld made in in-service pipeline cool at an accelerated rate as the result of the ability of the flowing contents to remove heat from the pipe wall. The accelerated cooling causes in-service welds to have hard heat-affected zones (HAZ) and a subsequent susceptibility to Hydrogen Cracking.
- ★ Maximum inside surface temperature during welding



Sample specialised welding Jobs



- **Incinerators** : For Solid, Liquid and Gaseous wastes
- **Scrubbers** : Box and venturi types for all gaseous wastes
- **Acoustics** : Sound proofing systems for generators and other industrial applications
- **Chimneys** : Guide supporting, self supporting and wall supporting types
- Turn Key Project delivery from concept to completion with consultancy on APC norms, selection of appropriate equipment/system, design, fabrication, installation, erection & commissioning



In-line Pipeline intervention : Product/Activity Profile
In collaboration with PTS-UK

- Hot Tapping and Line Stop Services
- Manufacturing of Hot Tap and Line Stop Equipment's & Fittings
- In-service welding on Pipelines.
- Online Valve Insertion
- Supply of Leak Repair Clamps
- Supply of Launcher and Receiver for Pipelines
- Pipeline Spools / Structure Fabrication Work



Hot Tapping Services in collaboration with PTS -UK

- **Hot Tapping** or Under Pressure drilling is the method of making a branch connection to existing pipelines or vessels or any other process equipment while the existing system is under pressure.
- This method employs a Tapping Machine and a full bore valve and either a nozzle or a full encirclement fitting (**Split Tee**) welded to the existing pressurized system.
- The Tapping (drilling) machine, generally consists of a telescoping boring bar mechanically driven by our specially designed gear box which advances a cutting tool.
- **PTS** can Hot tap from ½" to 96" sizes; from vacuum to 1480 psi pressure and up to 700 deg. F temperatures, flange ratings are from 150 Lbs. through 900 Lbs. ANSI ratings.



Line Stopping Services in collaboration with PTS -UK

Line Stopping is a means of sectional stopping of flow and providing an optional bypass (in case the line medium needs to be supplied downstream) while repairs or alteration works are in progress. Line Stopping can be performed on various piping materials and for a variety of media such as gas, oil, water, steam, process piping & sewage etc.

Why use Line Stopping?

- Service to consumers of process industries and sensitive services are maintained.
- Contamination and / or loss of fluid or gas does not occur.
- Toxic or harmful product is not released.
- Fire protection not affected.
- No time wasted draining the systems.
- Personnel are used efficiently on effecting repair.
- Eliminates need for bulk transfer and storage of harmful fluids.
- We can provide Stopping services on DN80 to DN1500 lines at 150 bar pressure on multiple mediums.



LINE STOPPLING PROCESS



LINE STOP
PLUGGING

Pipe Freezing Services in collaboration with PTS -UK

Cryogenic Pipe Freezing is used for temporary isolation of pipes. This is considered the safest, most economical and effective method for allowing general pipe work modifications.

The Pipeline materials that can be subjected to cryogenic temperatures include CS, CI, SS, aluminium alloys, etc. Pipeline fluids that have been crystallized to form an ice plug include: Fresh water, Glycol solutions, Sea water, Effluents / Sewage, Produced water, Sludge's, contaminated water, Crude oil, Bunker C oils, Fuel oils, Methanol, Lubrication oils, various chemical products.

The important point about Pipe Freezing is that the flow should be kept static during the process.



Pipe freezing video.html

https://www.youtube.com/watch?v=_VZX79vVPW0

Sample References

Sr. No	Customer Name	Job
1	IOCL	Various hot taps on crude oil, fuel oil, LP Steam For 4", 6", 8", 10", & 12", #150 & #300 lines
2	Cairn India	8" # 600 crude line
3	JSPL	56" #150 Hot tapping on critical coke oven gas line
4	Essar Oil (Naira Energy)	3 years running annual rate contract
5	GAIL	4" #300 Gas Pipe line
6	Serum Institute	8", 10", 12", 16" 24" & 30" Inservice welding and Hot tapping and including upside down tapping on 24" & 30"
7	Wellube	Supply Of Equipment's
8	Cooperheat Saudi Arabia	8" Hot Tap
9	Special technical services	Suppy material
10	TMM engineering	HOT TAP MACHINEC/W ACCESSORIES
11	Special technical services	Suppy material
12	RHEMA International LTDA	24" Hot Tap and 24" Double line Stop
13	Towell engineering services	Suppy material
14	Springhill consultants	Supply of Cutter, Hydraulic power Unit, Supply of service, Line stop cutter, Supply of Tapping Machine
15	Springhill consultants	Supply of various parts of hot tap equipments, Line stop cutter, Sandwich type tapping valve
16	J N bentley	Supply of 36" Tee
17	J N bentley	Supply of 36" double line stop services
18	Pan Gulf Valvserve	30" Line Stop
19	Pan Gulf Valvserve	12" 150# Line Stop
20	Pan Gulf Valvserve	1" 300# Hot Tap
21	Pan Gulf Valvserve	24" Tap, 66" Line Stop
22	Pan Gulf Valvserve	Supply of Tees and various parts of TM

**Hot Tapping & Line Stopping Equipment & Services in
collaboration with PTS -UK**

We can offer Hot Tapping Equipment and Services in collaboration with Power Technology UK, who is a reputed manufacturer of Hot Tapping and Line Stopping Machines.

They also have a recognized track record of offering Hot Tapping and Line stopping services in Europe, Africa and Middle East.

Hot Tapping Machine

M630 : Range : 1/2" – 6"; drive: Manual / air drive
Light Weight 36lbs; travel 24"/30"

M1766 : Range : 3" – 18"; drive: - air / hydraulic
Weight 700 lbs; travel 66"

M3680 : Range: 12" – 36"; drive: - hydraulic
Weight: 2500 lbs; travel 80"

M36108 : Range: 12" – 48"; drive: hydraulic
Weight: 3000 lbs; travel 108"

Introduction – Line Stop / Stopple Machine

Range : 3/4" – 3"

Max Pressure 1000psi, Max Temp 180 F

Range : 4" – 6", Range : 6" – 12"

Max Pressure 900psi, Max Temp 180F

Range : 14" – 20"

Max Pressure 750psi, Max Temp 180F

Range : 22" – 30"

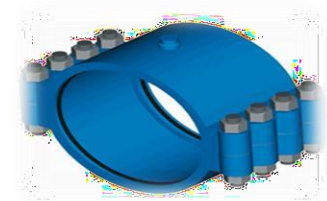
Max Pressure 625psi, Max Temp 180F

Range : 32", 36" 48"

Max Pressure 625, 625,1200 psi, Max Temp
180 F

Leak Repair Clamps

- Our leak repair clamps and leak repair enclosures offer pipeline and plant personnel quick onsite solutions to a wide range of pipe leaks. All leak repair products are constructed to ASME/ANSI codes and ASTM specifications.
- Custom designs are available for any size, shape, temperature, pressure or material.
- Constructed to ASME/ANSI Codes & to ASTM specifications
- Custom designed and manufactured options available for any size, shape, temperature, pressure, or material



Gas Bags

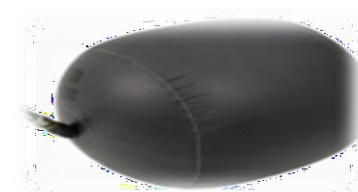
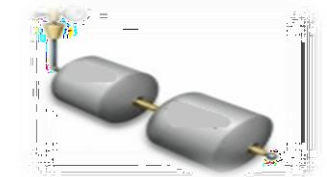
LOW PRESSURE GASBAGS

ALH GIS/E4 bag stoppers are for use with the low pressure range of flow stopping equipment of the supported bag type for use on cast iron, ductile iron, steel and polyethylene(PE) pipes of a size up to and including 300 mm (12 in) nominal inside diameter, carrying natural or manufactured gas. These bags are made from high strength nylon with good wear resistance with a latex bladder inner a semi rigid curved spine that provides support and rigidity. Connection is made with a brass 1/2" threaded connector with O ring seal.

MEDIUM PRESSURE GASBAG

The GIS/E19 primary bags have full approval and are designed to work with the Iris Stop equipment at pressures up to 30PSI (2 Bar).

For a full list of working pressures please refer to the GIS/E19 specification.



Valves & Pipe Fittings

We also supply various types of Carbon Steel, Stainless Steel & Alloy Steel and Pipe Fittings, Plate / Forged Flanges from the **ISO 9001-2008** leading manufacturer.

- Flanges : Threaded Flange, Weld Neck Flange, Slip on Flange, Socket Weld Flanges, Blind Flanges, Lap Joint Flanges, Plate Flanges)
- Pipe fittings (Elbows, tees, Cross, Reducer, End Caps, Bends, Stub End Lap Joint, Split Tee etc..)
- Forged Fittings : Socket Weld Fitting, Threaded Pipe Fittings, Pipe Nipples, Pipe Outlet Fittings, Swap Nipples/Pipe Swage



On-site Machining Services : Flange Facing

IN-SITUMACHININGSERVICES

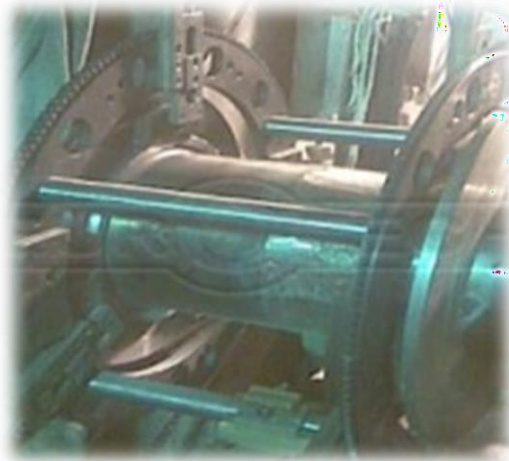


COKE CHAMBER FLANGE OVERHEAD MACHINING & COVER MACHINING

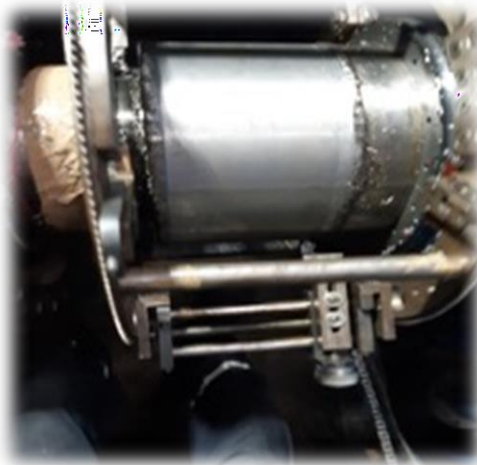


On-site Machining Services : In-situ Shaft machining

ID Fan Shaft Grinding



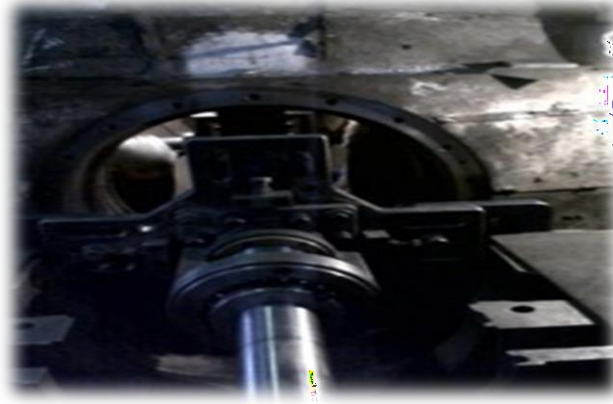
Roller Press Journal Grinding - Finishing



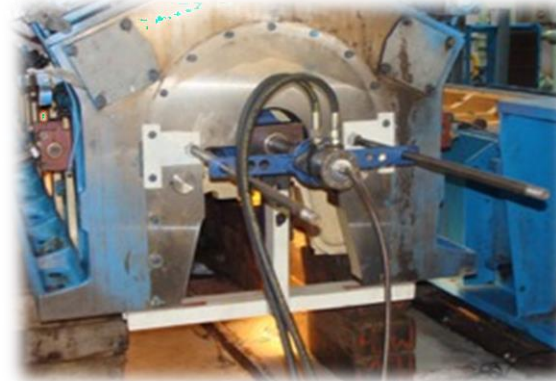
Hydro turbine shaft machining

On-site Machining Services : Line Boring

Line Boring – Turbine casing



Line Boring – Engine block



Boring in Turbine Housing



Taper Boring – Steel Plant



On-site Machining Services : Portable Single & 3 axis milling

In-situ Milling



In-situ Milling



**In-situ Milling –
Gear box seat**



**Keyway Milling –
Turbine casing**



On-site Machining Services : Metal Stitching

The metal stitching is a cold repair process for repairing of cracked or broken cast-iron, cast-aluminum components. This process is based on fundamental engineering principles and is an emergency service for the marine and land based industries

This process ensures leak proof repair of components operating under high pressure and heat. Cracked or broken Cast-iron Gearbox casings, Pump casings, structures and machine body parts can be metal stitched to almost original operating condition.



On-site Machining Services : Dowel Hole Machining



Dowel Hole Machining –
Equipment alignment

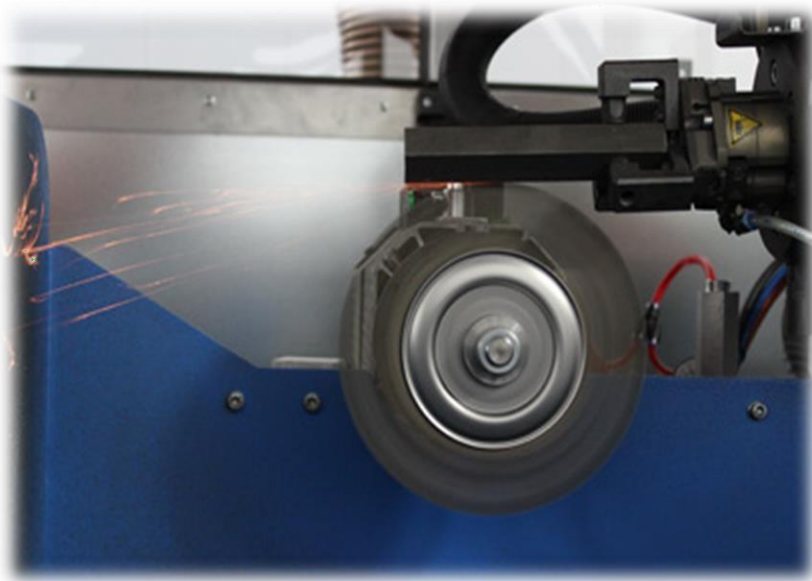


Gear Box Dowel Hole
Machining

Osborn Brushes for the Oil & Gas Industry

Osborn manufactures a wide variety of brushes for the pipeline industry. Whether dealing with exploration and drilling, pipe manufacturing, on-site weld cleaning or pipeline pigging, our cleaning solutions contribute in making your business perform reliable, on-time and cost-effectively.

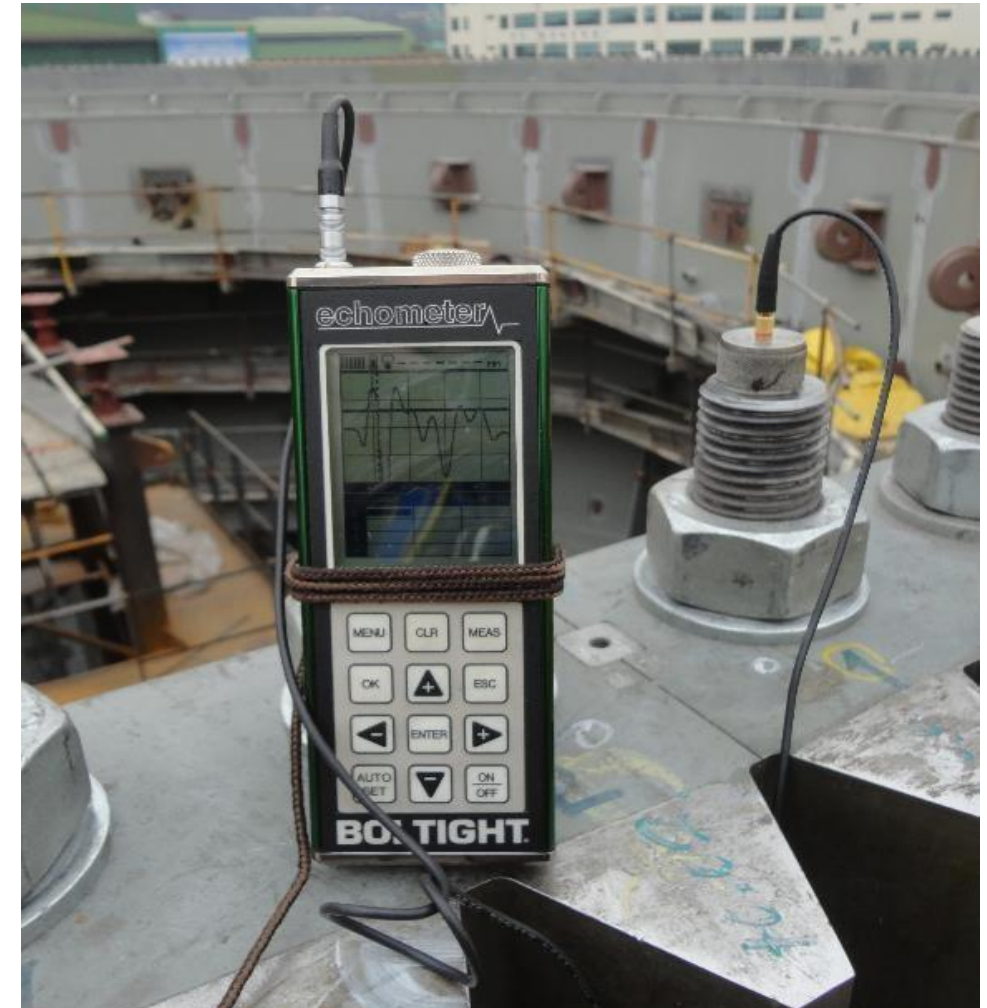
<https://osborn.com/media/PDF/literature-de/Osborn-Pipeline-English.pdf>



When using brushes up to 95% less sparks are being emitted (left) compared to regular grinding discs (right).

Where it's used

- Most commonly used as load validation method.
- When torqueing a joint the coefficient of friction cannot be accurately known.
- Echometer acts as an independent check on correct joint tightening.
- In service monitoring – commonly with wind turbines.
- When the original bolt load is unknown – the Echometer can be used “backwards” to determine the load that was removed from the bolt.



Benefits

- Compared to other methods of measuring elongation the Echometer is incredibly fast.
- Can be used to create a permanent electronic record for bolts and joints – especially useful for in service monitoring.
- Only minor access is required – useful for difficult to access bolts.
- In unit measurement conversion (stress, strain etc.) gives quick overview of what is happening in the joint.



DPK DIESEL GENSETS POWERED BY WORLD CLASS ENGINES

ONE STOP GENSET SOLUTION & SERVICE PROVIDER



In the Market covering the range from 5 KVA to 2500 KVA.

1. 5 KVA to 25 KVA is with ESCORTS ENGINE.
2. 30 KVA to 160 KVA with VOLVO EICHER ENGINE
3. 200 KVA upwards till 2500 KVA with BAUDOUIN ENGINE



RANGE 5 KVA TO 25 KVA

DG set model	KVA	KW	Engine model	bhp	Phase	Fuel consumption (ltr/hr)		Acoustic enclosure model	DG set dimension			DG set Weight kg	Fuel tank capacity ltrs
						75%	100%		Length mm	Width mm	Height mm		
D5L3STEL / D5L1STEL	5	4	G12 II	18	1 / 3	1.8	2.7	AE-15/EL/STD1	1770	1000	1660	800	80
D7.5L3STEL / D7.5L1STEL	7.5	6	G12 II	18	1 / 3	2.1	2.9	AE-15/EL/STD1	1770	1000	1660	800	80
D10L3STEL / D10L1STEL	10	8	G12	18	1 / 3	2.4	3.2	AE-15/EL/STD1	1770	1000	1660	800	80
D12.5L3STEL / D12.5L1STEL	12.5	10	G12	18	1 / 3	2.4	3.2	AE-15/EL/STD1	1770	1000	1660	825	80
D15L3STEL / D15L1STEL	15	12	G15	22	1 / 3	3.0	4.0	AE-15/EL/STD1	1770	1000	1660	850	80
D20L3STEL / D20L1STEL	20	16	G20	25	1 / 3	3.6	4.8	AE-25/EL/STD1	2000	950	1700	1050	90
D25L3STEL / D25L1STEL	25	20	G25	34	1 / 3	4.5	6.0	AE-25/EL/STD1	2000	950	1700	1050	90

RANGE 30 KVA TO 160 KVA

DG Set Model	kVA	kW	Engine model	bhp	Phase	Fuel consumption (ltr/hr)		Acoustic enclosure model	DG set dimension			DG set weight kg	Fuel tank capacity ltrs	Recommended Aluminium 3 1/2 core cable for 3 phase	
						75%	100%		Length mm	Width mm	Height mm			Cable size sq. mm	No. of runs
D30L3STVE / D30L1STVE	30	24	EE483TCI	38	1 / 3	5.5	6.6	AE-30/VE/STD1	2300	1000	1620	1350	95	25	1
D35L3STVE / D35L1STVE	35	28	EE483TCI	52	1 / 3	5.6	8.3	AE-40/VE/STD1	2450	1000	1855	1350	95	25	1
D40L3STVE / D40L1STVE	40	32	EE483TCI	52	1 / 3	6.4	9.4	AE-40/VE/STD1	2450	1000	1855	1350	95	35	1
D45L3STVE	45	36	EE483TCI	52	1 / 3	7.2	10.6	AE-40/VE/STD1	2450	1000	1855	1350	95	50	1
D50L3STVE	50	40	EE483TCI	65	3	9.0	12.0	AE-62.5/VE/STD1	2750	1100	2050	1450	150	50	1
D62.5L3STVE	62.5	50	EE483TCI	80	3	10.4	13.3	AE-62.5/VE/STD1	2750	1100	2050	1650	150	70	1
D82.5L3STVE	82.5	66	EE683TCI	105	3	13.0	17.0	AE-82.5/VE/STD1	3100	1100	2075	1850	160	95	1
D100L3STVE	100	80	EE694TCI	128	3	17.0	22.5	AE-125/VE/STD1	3275	1320	2200	2800	250	95	1
D125L3STVE	125	100	EE694TCI	156	3	20.5	27.7	AE-125/VE/STD1	3275	1320	2200	2800	250	120	1
D140L3STVE	140	112	EE694TCI	201	3	24.0	32.0	AE-160/VE/STD1	3800	1400	2640	3200	320	150	1
D160L3STVE	160	128	EE694TCI	201	3	27.0	36.5	AE-160/VE/STD1	3800	1400	2640	3200	320	185	1

RANGE 180 KVA TO 2500 KVA

DG Set Model	KVA	KW	Engine Model	bhp	Phase	Fuel consumption (ltr/hr) 75 %	Acoustic enclosure model	DG set dimension			DG set Weight Kg	Fuel tank capacity Ltrs	Recommended Aluminium 3 ½ core cable for 3 phasel	
								Length mm	Width mm	Height mm			Cablesize Sq. mm	No. of Runs
D180L3STBA	180	144	6M16G180/5E3	235	3	28.1	AE-250/BA/STD1	4550	1650	2700	4100	550	95 / 240	2 / 1
D200L3STBA	200	160	6M16G225/5E3	274	3	33.9	AE-250/BA/STD1	4550	1650	2700	4100	550	120 / 300 / 400	2 / 1 / 1
D250L3STBA	250	200	6M16G250/5E3	322	3	41.9	AE-250/BA/STD1	4550	1650	2700	4500	550	70 / 150	3 / 2
D275L3STBA	275	220	6M19G320/5E3	389	3	47.7	AE-320/BA/STD1	5000	2000	3055	5250	850	95 / 150	3 / 2
D320L3STBA	320	256	6M19G320/5E3	389	3	53.6	AE-320/BA/STD1	5000	2000	3055	5550	850	95 / 120 / 240	3 / 3 / 2
D380L3STBA	380	304	6M21G440/5E3	489	3	62.2	AE-500/BA/STD1	5600	2000	3425	5850	950	150 / 300	3 / 2
D400L3STBA	400	320	6M21G440/5E3	489	3	67.1	AE-500/BA/STD1	5600	2000	3425	5850	950	150 / 400	3 / 2
D450L3STBA	450	360	6M21G500/5E3	550	3	80.9	AE-500/BA/STD1	5600	2000	3425	5850	950	185 / 500	3 / 2
D500L3STBA**	500	400	6M21G500/5E3	550	3	80.9	AE-500/BA/STD1	5600	2000	3425	6200	950	150 / 240	4 / 3
D625L3STBA	625	500	6M33D633E310	771	3	114.0	AE-750/BA/STD1	6900	2544	3625	9260	990	240 / 400	4 / 3
D650L3STBA	650	520	6M33D660E310	885	3	122.7	AE-750/BA/STD1	6900	2544	3625	9260	990	240 / 400	4 / 3
D750L3STBA	750	600	6M33D660E310	885	3	132.6	AE-750/BA/STD1	6900	2544	3625	10850	990	240 / 300	4 / 4

DPK Diesel Gensets

- * Fuel consumption depends on density of diesel, engine maintenance and other various factors.
- * A tolerance of $\pm 5\%$ has to be considered on fuel consumption values.
- * Engine power rating is at NTP conditions in accordance with IS 10002 / BS 5514.
- * Electrical power outputs are in accordance with BS5000 / IS4722 for 415V, 3phase, 3 wire, 0.8power factor (lag) and 50Hz freq.
- * DG set height includes silencer, exhaust hood and silencer cover heights.
- * DG set width includes lifting hook and all other projections.
- * Specifications are subjected to change without notice.
- * Recommended cable size is for armoured underground Aluminium 3.5 core cable considering 10% over load on 100% load.
- ** All DG sets are rated for prime rating except D500L3STBA-500KVA, which is Standby rating.

Thank You

We strive to serve YOU

Contact :

Basavaraj Shantagouda

Business Development Manager

+91 9731628887

sales@coreservindustrial.com

Regd. Office : 18, 3rd Cross road, KR Layout,

JP Nagar 6th phase, Bangalore - 78

www.coreservindustrial.com

Murali Narasimhan

Managing Director

+91-9902783547

info@coreservindustrial.com