



# RACE BOOK

2021







*Sharing the Sailing Community*



*Hamachi* – 2019 Boat of the Year

Skipper: Shawn Dougherty

# Corinthian Yacht Club of Seattle Race Book 2021

Updated April 14, 2021

7755 Seaview Ave NW, Pier V  
Seattle, Washington 98117

[www.cycseattle.org](http://www.cycseattle.org) • 206.789.1919 • [office@cycseattle.org](mailto:office@cycseattle.org)

# Contents

About This Race Book.....	1
Let's Go Sailing!.....	1
About the Club.....	2
Club Programs.....	3
Racing Calendar.....	4
Race Registration.....	5
Entry Fees and Season Passes.....	6
Lake Washington Racing.....	7
Last Season's Regatta Winners.....	7
Notice of Race Lake Tuesday/Wednesday Evening Series.....	8
Notice of Race Lake Moonlight Race.....	9
Notice of Race Lake Fall Regatta.....	10
Puget Sound Racing.....	11
Last Season's Regatta Winners.....	11
Notice of Race Frigid Digit Regatta (2022).....	12
Notice of Race Center Sound Series.....	13
Notice of Race Center Sound Series: Blakely Rock Race.....	14
Notice of Race Center Sound Series: Scatchet Head Race.....	15
Notice of Race Center Sound Series: Three Tree Point Race.....	16
Notice of Race Puget Sound Spring Regatta (Big Boat).....	17
Notice of Race Puget Sound Spring Regatta (Small Boat).....	18
Notice of Race Sound Wednesday/Thursday Evening Series.....	19
Notice of Race Puget Sound Pursuit Race.....	20
Race Information CYC Commodore Gibson Cruise.....	21
Notice of Race Puget Sound Sailing Championship (Small Boat).....	22
Notice of Race Puget Sound Sailing Championship (Big Boat).....	23
Notice of Race Turkey Bowl Regatta.....	24
CYC Standard Notice of Race.....	26
Appendices.....	29
US Sailing Safety Equipment Requirements (SER).....	29
Puget Sound Sailboat Safety Regulations.....	33
US Coast Guard Warning.....	34
Contacts.....	35
Buoy Course Marks (relative positions).....	36
Puget Sound Geographic Marks (fixed positions).....	37

## On the Cover

CYC Center Sound Blakely Rock Race 2019

## Photo Credits

Cover: Jan Anderson, [janpix.smugmug.com](http://janpix.smugmug.com)  
Boat of the Year: Jan Anderson, [janpix.smugmug.com](http://janpix.smugmug.com)

## About This Race Book

This Race Book provides general information regarding Corinthian Yacht Club's planned racing program for 2021. It also includes the official Notice of Race (NOR) for CYC's annual events/series – as of the date of publication. This Race Book will be updated, including revisions to the NORs, as needed. The most current version can be found on the CYC Racing Web Page: [cycseattle.org/racing](http://cycseattle.org/racing). Racers should check that page regularly for updates.

## Let's Go Sailing!

The 2021 racing season is here and we could not be more excited to welcome the sailing community back onto the water and into the club. After the challenges of 2020, we look forward to the return of the classics and welcome the new, like the Puget Sound Pursuit Race.

The race schedule this year offers opportunities for those who want to race single or double handed, one design, PHRF/ORC or non-flying sails. For those who enjoy being involved in racing but aren't as keen on racing themselves, volunteering for race committee is a great way to stay connected to the community.

Shelagh Hansen,  
Commodore

As we all know and experienced, 2020 was a year of seemingly endless disruption, between COVID lock-downs , the clubhouse being out of commission, and all the rest. I want to express my personal appreciation to our volunteers, staff and membership for your patience and great attitudes in pushing through.

As we move into 2021, we are planning a safe, compliant and fun season, with a combination of our classics, and some new events.

A new innovation this year will be utilizing the Kwindoo app. We have arranged a club wide free license for use of this app for tracking and scoring as necessary. We will be providing additional information on the site.

We are also offering Shorthanded scoring in all our events, in alliance with the Pacific Northwest Shorthanded Sailing Society.

Thank you for your ongoing support. It is an honor to serve as your Fleet Race Captain.

Matthew Wood,  
Fleet Captain Race & PHRF-NW Handicapper

## About the Club

Our club was founded in 1945 by sailors who came up with the idea while in a ski hut in the Cascade Mountains. They wanted to race more and socialize more with their sailing friends. Corinthian Yacht Club has become the region's preeminent club for people who love sailing, whether or not they happen to own a boat. Our activities include racing, cruising, youth sailing, education, and social events.

The Club is a Washington nonprofit corporation that is owned by the members. While it is not a charity, it is also not a typical company or nonprofit. It is basically a cooperative with shared property where the members remain in charge of managing the organization and fulfilling a vision.

Members are individuals and families. Juniors who are 18 and under are members within their family's membership. There are also business and fleet memberships.

The membership as a whole has ultimate say over Club matters and meets at least annually to elect representatives, maintain the bylaws, and approve major decisions. The Board of Trustees, composed of elected Officers and Directors, meets at least monthly to oversee club operations and approve policy. The Officers, led by the Commodore as chief executive, execute the ongoing business of the Club. Various committees are formed by the Board to carry out given responsibilities and events.

A lean crew of staff report to the Commodore. Our staff handle business operations to facilitate the members who make things happen. The staff is small to keep our costs low, meaning all members are expected to pitch in.

CYC exists so we, as sailors, can better pursue our sailing goals and enhance our sailing experiences.. The love of sailing is our bond and interaction between our great people is our value. The Club is our platform for sharing our wonderful sailing lifestyle with more people and to do more with each other and for each other.



# Club Programs

## Racing

Corinthian sailors have been racing on Lake Washington at Leschi since our founding in 1945 and on Puget Sound out of Shilshole since before members built our clubhouse in 1969. We have heard that we run more races than any other private club in the country. Corinthian members are passionate about racing.

Evening racing on Lake Washington runs from mid-April through mid-September with J-24s racing on Tuesday and Thistles, San Juan 24s, and Thunderbirds racing on Wednesday. Join us at the end of the summer for the late night Moonlight Poker Run Race. The Lake Fall Regatta follows the evening series for a weekend event out of Leschi. Additional fleets are welcome to form.

Evening racing on Puget Sound runs over the same period with keelboats racing on Wednesday and I-14, 505, Star, Tasar, Vanguard 15, RS Aero, Laser, Snipe, and Optimist, Hobie and other classes racing on Thursday. We offer the Center Sound Series mid-distances races in March and run several weekend buoy-racing regattas. Over the summer months, we also support casual racing on Friday nights off the breakwater.

## Cruising

The Pacific Northwest is a world-class cruising area and many of our members take part in cruises organized by volunteers. There are about a dozen events each year. Members with boats bring them and members without boats ship as crew. Former, current, and perhaps future racers all take part in cruising together.

## Youth Sailing

We've ramped up our youth sailing with the Summer Sail Camp providing education to as many as 140 juniors, intermediate to advanced clinics, Guppy sailing on summer Wednesdays evenings, and family evening sailing on Fridays for more casual and less experienced sailors to enjoy our sport.

## Education

Our members love to learn and share. Each year we run dozens of education events including the Rookie Rally (learn how to crew and race), pre-race strategy chalk talks, cruising presentations, first aid, US Sailing courses (race management, judging, safe powerboat handling), mark boat driver training, women's sailing clinics, and even volunteer bartender training.

## Social

Getting people together on and off the water is probably the most rewarding value of the club. Once the COVID restrictions are lifted, our newly renovated Shilshole clubhouse will be open to members Thursdays and Fridays and after evening and weekend racing (over 100 nights a year). The bar is often run by volunteers and affordable meals will be available as appropriate. Sometimes we're just open to hang out and other times we have a program, like live music, wine tastings, and sailing presentations by our members. Check the website calendar and join in.

# Racing Calendar

## JANUARY

- 3 Laser Frostbite
- 15 Annual Awards Party
- 23-24 Frigid Digit Regatta

## FEBRUARY

- 7 Laser Frostbite
- 28 Laser Frostbite

## MARCH

- 6 Blakely Rock Race
- 13 Scatchet Head Race
- 14 Laser Frostbite
- 27 Three Tree Point Race

## APRIL

- 17-18 PSSR (Big Boat)
- 24-25 PSSR (Small Boat)
- 20-22 Spring Evening 1 (T, W, Th)
- 27-29 Spring Evening 2 (T, W, Th)

## MAY

- 4-6 Spring Evening 3 (T, W, Th)
- 11-13 Spring Evening 4 (T, W, Th)
- 18-20 Spring Evening 5 (T, W, Th)
- 25-27 Interim Evening 1 (T, W, Th)
- 29-30 Puget Sound Pursuit Race

## JUNE

- 1-3 Interim Evening 2 (T, W, Th)
- 8-10 Interim Evening 3 (T, W, Th)
- 15-17 Interim Evening 4 (T, W, Th)
- 21-25 Race Week PNW
- 26-27 San Juan 24 North Americans
- 29-1 Interim Evening 5 (T, W, Th)

## JULY

- 6-8 Summer Evening 1 (T, W, Th)
- 13-15 Summer Evening 2 (T, W, Th)
- 20-22 Summer Evening 3 (W, Th)
- 27-29 Summer Evening 4 (T, W, Th)
- 31-1 J/Fest

## AUGUST

- 3-5 Summer Evening 5 (T, W, Th)
- 10-12 Fall Evening 1 (T, W, Th)
- 14-15 Commodore / Gibson Cruise
- 17-19 Fall Evening 2 (T, W, Th)
- 21 Lake Moonlight Race
- 24-26 Fall Evening 3 (T, W, Th)
- 28 Lake Fall Regatta
- 31-2 Fall Evening 4 (T, W, Th)

## SEPTEMBER

- 7-9 Fall Evening 5 (T, W, Th)

## OCTOBER

- 2-3 PSSC (Small Boat)
- 9-10 PSSC (Big Boat)
- 22-24 SYC Grand Prix (@CYC)

## NOVEMBER

- 20-21 Turkey Bowl Regatta
- 22 Annual Membership Meeting  
*(see website to confirm date)*

## JANUARY 2021

- 23-24 Frigid Digit Regatta



# Race Registration

## Registration

Online registration at [www.cycseattle.org/racing](http://www.cycseattle.org/racing). See Standard NOR, 2.1 in this Race Book for more details.

## Deadlines

Please register as early as practical to help build your fleet. Early registrations encourage others to participate when they look to see who the competition will be. Large early registrations also encourage sponsorships that enhance the events.

Registrations must be submitted online or received at the club by close of business (normally 5 PM) on the entry deadline. The deadline is stated in the Notice of Race and is typically two days before the event. Registrations accepted at the discretion of the race committee after the deadline may be assessed a \$20 late fee.

## Season's Pass

Discount packages are available for members only (Adult/Family, Senior, Honorary Life, and Junior), as follows:

**Lake Season's Pass (+ Sound Weekends).** Good for all CYC races on Lake Washington, which includes the Spring, Interim, Summer, and Fall Evening series for either Tuesday or Wednesday night, plus the Lake Moonlight Race and Lake Fall Regatta, plus all CYC Puget Sound weekend races. This is for you if you sail the weeknights, and you will achieve even more substantial savings when you sail more. Your efforts to sail multiple venues are greatly appreciated by your fellow members!

**Sound Season's Pass (+ Lake Weekends).** Good for all CYC races on Puget Sound, which includes the Spring, Interim, Summer, and Fall Evening series for either Wednesday or Thursday night, plus Puget Sound weekend races, plus the Lake Moonlight Race and Lake Fall Regatta. This is usually very worthwhile if you sail five or more events, such as the four weeknight series and one weekend, or three weeknight series and two weekends. Add even more sailing for no extra charge!

The Season's Pass is for a given owner and boat or, if you happen to change boats mid-season, for a type of boat that would continue to use the same package. For unique circumstances, contact the Fleet Captain Race.

## Contact

For registration issues, please contact one of the following:

CYC Office [office@cycseattle.org](mailto:office@cycseattle.org)  
206-789-1919

CYC Fleet Captain Race Matthew Wood; [matthewewood@outlook.com](mailto:matthewewood@outlook.com)  
206-501-8971

# Entry Fees and Season Passes

## Lake Events

Tuesday/Wednesday Evening (1 of 4 series)*	<i>See calendar for dates</i>	\$180
Lake Moonlight Race	<i>Aug 21</i>	\$50
Lake Fall Regatta	<i>Aug 28</i>	\$80

## Sound Events

Frigid Digit Regatta Centerboard	<i>Jan 22-23, 2022</i>	\$60
Center Sound Series		\$180
Blakely Rock Race	<i>March 6</i>	\$70
Scatchet Head Race	<i>March 13</i>	\$70
Three Tree Point Race	<i>March 27</i>	\$70
Puget Sound Spring Regatta (PSSR)	<i>Big: Apr 17-18 / Small: Apr 24-25</i>	
Keelboat		\$180
Centerboard		\$80
Wednesday/Thursday Evening (1 of 4 series)	<i>See calendar for dates</i>	
Keelboat		\$180
Centerboard		\$80
Puget Sound Pursuit Race	<i>May 29</i>	\$50
Commodore Gibson Cruise Regatta	<i>Aug 14-15</i>	
Puget Sound Sailing Championship (PSSC)	<i>Small: Oct 2-3 / Big: Oct 9-10</i>	
Keelboat		\$180
Centerboard		\$80
Turkey Bowl Regatta	<i>Nov 20-21</i>	
Centerboard		\$60

## Member Discount Packages\*

Lake Season's Pass (+ Sound Weekends)		
Keelboat		\$650
Centerboard		\$280
Sound Season's Pass (+ Lake Weekends)		
Keelboat		\$650
Centerboard		\$280

\* Members Only (Adult/Family, Senior, Honorary Life, and Junior).

# Lake Washington Racing

## 2020 Regatta Winners

*Abbreviated season due to COVID-19 restrictions*

### Lake Tuesday Evening Series (J/24)

Summer *Self Abuse, Harry Dursch*  
Fall *Tremendous Slouch, Scott Milne*

### Lake Fall Regatta

J/24 *Baba Louie, Brian Thomas*  
Thistle *3677*

### Lake Wednesday Evening Series

Summer  
T-Bird *Predator, Craig Burnell*  
Thistle *TTFN, Freeland/Stabbert*  
Fall  
T-Bird *Predator, Craig Burnell*  
Thistle *Just 3883, Reddaway/Bainbridge*



J/24 racing in the Tuesday Evening Series

## Notice of Race

### Lake Tuesday/Wednesday Evening Series

**Date:** There are four Tuesday series and four Wednesday series, as follows:

	<u>Tuesday Series 2021</u>	<u>Wednesday Series 2021</u>
Spring Series:	Apr 20, 27, May 4, 11, 18	Apr 21, 28, May 5, 12, 19
Interim Series:	May 25, Jun 1, 8, 15, 29	May 26, Jun 2, 9, 16, 30
Summer Series:	Jul 6, 13, 20, 27, Aug 3	Jul 7, 14, 21, 28, Aug 4
Fall Series:	Aug 10, 17, 24, 31, Sep 7	Aug 11, 18, 25, Sep 1, 8

**Location:** Lake Washington off Leschi.

#### Classes:

Tuesdays:	J/24
Wednesdays:	Thunderbird, San Juan 24, Thistle. Other centerboard and small keelboat classes with at least five boats may apply.

#### Schedule:

1715 – 1745	Practice starts (when available)
1800	First warning signal

The race committee intends to conclude racing at a time that will permit boats to return to Leschi Marina before dark.

**Courses:** Courses will typically be windward / leeward and may include gates, offsets, and gybe marks. Two to four races are targeted for each day. Target race duration is 20 to 60 minutes.

**Scoring:** A boat's series score will be the total of her race scores, except that a boat's worst score will be excluded if at least six races are completed and two scores will be excluded if at least twelve races are completed. This changes RRS A2.1. One race will constitute a series.

**Time Limit:** Ninety minutes for the first boat in class to *finish*. Other boats must *finish* within 30 minutes of the first boat that *finishes*.

#### Other Provisions:

- CYC Standard Notice of Race applies.
- State and County COVID-19 regulations as appropriate.
- Eligibility: CYC Adult/Family, Senior, Honorary Life, and Junior members. Prospective members may race in these series for up to 12 months.

**Awards:** 1<sup>st</sup>, 2<sup>nd</sup>, and 3<sup>rd</sup> in class for each series.

#### Registration Fee:

Included in Season's Pass available to CYC members, or:

Keelboat / Centerboard     \$180 per series

**Registration Deadline:** Monday before the start of each series.

# Notice of Race

## Lake Moonlight Race

**Date:** August 21, 2021 (Saturday)

**Location:** Lake Washington, starting and finishing lines off Leschi.

**Classes:** PHRF-NW, IRC/ORC, J/24, Thunderbird, SJ 24 and PNWSSS. Other keelboat classes with at least five boats may apply.

### Schedule:

#### Saturday

1730-1745	Competitor's briefing
1900	First warning signal
2100	No warning signal after this time
After racing	Awards at Leschi COVID allowing

**Course:** Start at the starting line off Leschi, pass under the east span of the Evergreen Point Floating Bridge (also known as the "520 Bridge") northbound, round a temporary mark approximately .25 NM E of Sand Point to port, pass under the east span of the Evergreen Point Floating Bridge southbound, finish at the finishing line off Leschi. Course distance ~ 10 NM.

**Shortened Course:** The race committee may shorten the course at a finishing line approximately 1000 feet north of the east span of the Evergreen Point Floating Bridge. If the race committee signals this shortened course (displays flag S with two sounds), the finishing line shall be between the staff displaying flag S and a nearby temporary buoy. This changes RRS 32.2. This does not prevent the race committee from shortening the course at another mark.

**Poker Run:** Each boat will receive five playing cards during the race, with one card provided at each of the following locations: the start, passing under the bridge northbound, rounding the mark off Sand Point, passing under the bridge southbound, and finishing. A race whaler or assisting vessel will hand out the cards and may display a flashing white beacon light.

**Time Limit:** Boat *finishing* after 2400, August 21, 2021 will be scored DNF. This changes RRS 35.

### Other Provisions:

- CYC Standard Notice of Race applies.
- State and County COVID-19 regulations as appropriate.
- A boat racing between sunset and sunrise shall carry navigation lights that meet U. S. Coast Guard or applicable government requirements mounted so that they will not be obscured by the sails nor be located below deck level.
- A boat shall carry U.S. Coast Guard (or applicable government entity) flares meeting day-night requirements not older than the expiration date.
- A boat shall have a VHF radio which may be fixed or handheld.

**Awards:** 1<sup>st</sup>, 2<sup>nd</sup>, and 3<sup>rd</sup> in class and best poker hand.

### Registration Fee:

Included in Season's Pass available to CYC members, or:

Keelboat	\$50
----------	------

**Registration Deadline:** August 19, 2021 (Thursday)

# Notice of Race

## Lake Fall Regatta

**Date:** August 28, 2021 (Saturday)

**Location:** Lake Washington off Leschi.

**Classes:** J/24, Thunderbird, San Juan 24, Thistle and other centerboard and small keelboat classes with at least five boats may apply.

### Schedule:

#### Saturday

0900 – 0930	Late check in
0930 – 0945	Competitor's briefing
1015 – 1045	Practice starts (when available)
1100	First warning signal
1600	No warning signal after
After racing	Social gathering , COVID allowing

**Courses:** Courses will typically be windward / leeward and may include gates, offsets, and gybe marks. Two to four races are targeted for each day. Target race duration is 20 to 60 minutes.

**Scoring:** A boat's series score will be the total of her race scores, except that a boat's worst score will be excluded if six or more races are completed. This changes RRS A2.1. One race will constitute a series.

**Time Limit:** Ninety minutes for the first boat in class to *finish*. Other boats must *finish* within 30 minutes of the first boat that *finishes*.

### Other Provisions:

- CYC Standard Notice of Race applies
- State and County COVID-19 regulations as appropriate..

**Awards:** 1<sup>st</sup>, 2<sup>nd</sup>, and 3<sup>rd</sup> in class.

### Registration Fee:

Included in Season's Pass available to CYC members, or:

Keelboat / Centerboard     \$80

**Registration Deadline:** August 26, 2021 (Thursday)



# Puget Sound Racing

## 2020 Regatta Winners

*Abbreviated season due to COVID 19 restrictions*

### Frigid Digit Regatta

Tasar	2398, Stasi Burzycki
RS Aero	2024, Dalton Bergan
Laser	170802, Charles Fulmer
Laser Radial	<i>Flying Penguin</i> , Annie Buel
Laser 4.7	ZZZZAP, Alex Zaputil
Optimist	21565, Sam Bush

### Sound Wednesday Evening Series

Summer	
PHRF 2	<i>One Life</i> , David Miller
J/105	<i>Corvo 105</i> , Tom Kerr
J/80	<i>Reckless</i> , John Sezer
Fall	
PHRF 2	63, Dan Falk
J/105	<i>Peer Gynt</i> , Viola/Billey
J/80	<i>Reckless</i> , John Sezer

### Sound Thursday Evening Series

Spring	
Star	<i>Green Machine</i> , Carl Buchan
Tasar	<i>Sharp as a Tack</i> , Jay Renehan
RS Aero	<i>Loop</i> , Dalton Bergan
Laser	170802, Charles Fulmer
Interim	
Star	<i>Misty</i> , Derek DeCouteau
Tasar	2691, Chris Lanzinger
RS Aero	<i>Loop</i> , Dalton Bergan
Laser	<i>Got Yer Back</i> , Mark Ross
Snipe	<i>Wasabi</i> , Clifford Wright
Summer	
RS Aero	3251, Andrew Loe
Laser	198658
Laser Radial	216586, Hannah Beaver
Laser 4.7	216583
Snipe	29905, Katya Smith
Fall	
Hobie 16	83719
RS Aero	<i>Meadow Point Hurricane</i> , Dan Falk
Laser	198658
Laser Radial	216586, Hannah Beaver
Laser 4.7	216536
Snipe	<i>Wasabi</i> , Clifford Wright

### Commodore Gibson Cruise

Commodore Race	<i>Those Guys</i> , Heins/Huse
Gibson Race	<i>Second Son</i> , Bereson

### Puget Sound Sailing Championship (PSSC)

Hobie 18	<i>Hobie Trails 2U</i> , Paul Von Stubbe
Hobie 16	<i>Time Warp</i> , Peter Nelson
Tasar	<i>Sharp as a Tack</i> , Jay Renehan
Vanguard 15	5, Caroline Lochner
RS Aero	<i>Loop</i> , Dalton Bergan
Laser	208821, Owen Timms
Laser Radial	208820, Sammy Farkas
Laser 4.7	ZZZZAP, Alex Zaputil
Optimist	21565, Sam Bush
PHRF 1	<i>Valkyrie</i> , Cathy VanAntwerp
PHRF 2	<i>Lodos</i> , Tolga Cezik
J/105	<i>Moose Unknown</i> , John Aitchison
Melges 24	<i>Good Enough</i> , Keith Hammer
J/80	<i>Tastes Like Chicken</i> , Richard Demmler
J/24	<i>Hair of the Dog</i> , Jakob Lichtenberg

### Turkey Bowl

505	<i>Pink Boat</i> , Miles Johannessen
Tasar	<i>Sharp as a Tack</i> , Jay Renehan
Vanguard 15	5, Jacob Jones
RS Aero	<i>Loop</i> , Dalton Bergan
Laser	208821, Owen Timms
Laser Radial	208049, Hanne Weaver
Laser 4.7	ZZZZAP, Alex Zaputil
FJ	<i>Saucy Snake</i> , Catie Vandervort
Optimist	<i>Strike</i> , Barrett Milne

# Notice of Race

## Frigid Digit Regatta (2022)

*Presented by the Seattle Laser and RS Aero Fleets*

**Date:** January 22-23, 2022 (Saturday and Sunday)

**Location:** Puget Sound off Shilshole.

**Classes:** RS Aero, Laser, Laser Radial, Laser 4.7, Optimist and other centerboard classes with at least five boats may apply.

### **Schedule:**

#### Saturday

1030 – 1045	Competitor's briefing
1115 – 1145	Practice starts (when available)
1200	First warning signal
After racing	Party at clubhouse with food available for purchase

#### Sunday

1015 – 1045	Practice starts (when available)
1100	First warning signal
1600	No warning signal after this time
After racing	Awards party at clubhouse

**Courses:** Courses will typically be windward / leeward and may include gates, offsets, and gybe marks. Four to six races are targeted for each day. Target race duration is 20 to 40 minutes.

**Scoring:** A boat's series score will be the total of her race scores, except that a boat's worst score will be excluded if six or more races are completed. This changes RRS A2.1. One race will constitute a series.

**Time Limit:** Sixty minutes for the first boat in class to *finish*. Other boats must *finish* within 20 minutes of the first boat that *finishes*.

### **Other Provisions:**

- CYC Standard Notice of Race applies.
- Competitors must check in at CYC clubhouse prior to racing.
- The Seattle Laser Fleet Frigid Digit Regatta Perpetual Trophy will be awarded to the winner of the Laser (full rig) fleet.

**Awards:** 1<sup>st</sup>, 2<sup>nd</sup>, and 3<sup>rd</sup> in class.

### **Registration Fee:**

Included in Season's Pass available to CYC members, or:

Centerboard                      \$60

**Registration Deadline:** January 20, 2022 (Thursday)



## Notice of Race Center Sound Series

The Center Sound Series is a series of the following events:

Blakely Rock Race	March 6, 2021 (Saturday)
Scatchet Head Race	March 13, 2021 (Saturday)
Three Tree Point Race	March 27, 2021 (Saturday)

**Classes:** PPHRF-NW, IRC/ORC, PNWSSS and others with at least five boats may apply. Monohull, multihull, and casual class boats will race in separate classes.

**Scoring:** Boats will be scored in class and overall. A boat's series score will be the total of her race scores with no scores excluded. This changes RRS A2.1. One race will constitute a series.

### Other Provisions:

- CYC Standard Notice of Race applies
- State and County COVID-19 regulations as appropriate.

### Awards:

Each Race: 1<sup>st</sup>, 2<sup>nd</sup>, and 3<sup>rd</sup> in class.

Series: 1<sup>st</sup> overall per course and 1<sup>st</sup>, 2<sup>nd</sup>, 3<sup>rd</sup> in class.

Permanent Trophies: Permanent trophies will be awarded at the CYC Annual Party for race classes overall by race and racing classes series overall (Werner Ohmes Fog Horn Trophy). The Werner Ohmes Fog Horn Trophy is awarded to the boat with the highest score calculated as follows: A boat's score for a race is  $100(N + 1 - P)/(N + 1)$  points, where P is her place in her class in that race and N is the number of starters in her class in that race; a boat that does not finish scores  $(66)/(N + 1)$  points, a disqualified boat scores  $(33)/(N + 1)$  points, and a boat that does not start scores 0 points; a boat's series score is the sum of her score in all races in the series.

### Registration Fee:

Included in Season's Pass available to CYC members, or:

\$180 for Center Sound Series (or \$70 per race). Casual Class \$100 for Center Sound Series (or \$40 per race). Boats that register per race will be scored in the series for the races entered.

**Registration Deadline:** March 5, 2021 (Friday)

**Moorage:** Guest moorage is available at Shilshole Bay Marina. To make arrangements, call the marina office at VHF 17, 206-787-3006, or 206-601-4089 (after hours). Moorage fees are based on boat length and services.

For more information, see the Notices of Race for each race in the series.

# Notice of Race

## Center Sound Series: Blakely Rock Race

**Date:** March 6, 2021 (Saturday)

**Location:** Puget Sound, starting and finishing lines in Shilshole Bay.

**Classes:** PHRF-NW, IRC/ORC, PNWSSS and other classes with at least five boats may apply. Monohull, multihull, and casual class boats will race in separate classes

### Schedule:

#### Saturday

1000	First warning signal
1400	No warning signal after this time

### Course (Racing Classes):

North Wind: Start by leaving the starting mark buoy to port, round mark “N” to port, round mark “K” to port, and finish by leaving the finishing mark buoy to port. Course distance ~ 21 NM.

South Wind: Start by leaving the starting mark buoy to starboard, round mark “K” to starboard, round mark “N” to starboard, and finish by leaving the finishing mark buoy to starboard. Course distance ~ 21 NM.

An alternate course may be posted by the Race Committee, weather depending.

### Course (Casual Classes):

North Wind: Start by leaving the starting mark buoy to port, round mark “N” to port, round mark “W” to port, and finish by leaving the finishing mark buoy to port. Course distance ~ 12 NM.

South Wind: Start by leaving the starting mark buoy to starboard, round mark “W” to starboard, round mark “N” to starboard, and finish by leaving the finishing mark buoy to starboard. Course distance ~ 12 NM.

An alternate course may be posted by the Race Committee, weather depending.

**Time Limit:** Eight hours for the first boat in class. Other boats must *finish* the later of 8 hours or 1 hour after of the first boat that *finishes*.

### Other Provisions:

- CYC Standard Notice of Race applies.
- State and County COVID-19 regulations as appropriate.
- Boats must comply with equipment requirement category SER Nearshore, as amended in the Standard NOR and Appendices in this Race Book.
- This race is part of the CYC Center Sound Series.

**Awards:** For the race, 1<sup>st</sup>, 2<sup>nd</sup>, and 3<sup>rd</sup> in class. Awards will be distributed as per directions in Sailing Instructions.

### Registration Fee:

Included in Season’s Pass available to CYC members, or:

\$70 (or \$180 for Center Sound Series). Casual Class \$40 (or \$100 for Center Sound Series).

**Registration Deadline:** March 5, 2021 (Friday)

# Notice of Race

## Center Sound Series: Scatchet Head Race

**Date:** March 13, 2021 (Saturday)

**Location:** Puget Sound, starting and finishing lines in Shilshole Bay.

**Classes:** PHRF-NW, IRC/ORC, PNWSSS and other classes with at least five boats may apply. Monohull, multihull, and casual class boats will race in separate classes

**Schedule:**

Saturday

1000                      First warning signal  
1400                      No warning signal after this time

**Course (Racing Classes):**

Start by leaving the starting mark buoy to port, round Scatchet Head Lighted Gong Buoy (LL#16555) to port, and finish by leaving the finishing mark buoy to port. Course distance ~ 26 NM.

An alternate course may be posted by the Race Committee, weather depending.

**Course (Casual Classes):**

Start by leaving the starting mark buoy to port, round mark "U" to port, round mark "M" to starboard, round mark "U" to port, and finish by leaving the finishing mark buoy to port. Course distance ~ 13 NM.

An alternate course may be posted by the Race Committee, weather depending.

**Time Limit:** Nine hours for the first boat in class. Other boats must *finish* the later of 9 hours or 1 hour after of the first boat that *finishes*.

**Other Provisions:**

- CYC Standard Notice of Race applies.
- State and County COVID-19 regulations as appropriate.
- Boats must comply with equipment requirement category SER Nearshore, as amended in the Standard NOR and Appendices in this Race Book.
- This race is part of the CYC Center Sound Series.

**Awards:** For the race, 1<sup>st</sup>, 2<sup>nd</sup>, and 3<sup>rd</sup> in class. Awards will be distributed as per directions in Sailing Instructions.

**Registration Fee:**

Included in Season's Pass available to CYC members, or:

\$70 (or \$180 for Center Sound Series). Casual Class \$40 (or \$100 for Center Sound Series).

**Registration Deadline:** March 12, 2021 (Friday)

# Notice of Race

## Center Sound Series: Three Tree Point Race

**Date:** March 27, 2021 (Saturday)

**Location:** Puget Sound, starting and finishing lines in Shilshole Bay.

**Classes:** PHRF-NW, IRC/ORC, PNWSSS and other classes with at least five boats may apply. Monohull, multihull, and casual class boats will race in separate classes

**Schedule:**

Saturday

1000	First warning signal
1400	No warning signal after this time

**Course (Racing Classes):**

Start by leaving the starting mark buoy to port, round the TTPYC Racing Buoy C to starboard, and finish by leaving the finishing mark buoy to port. The TTPYC Racing Buoy C is a white, 6 inch diameter cylinder rising 8 feet above the water located approximately 1000 feet SE of the Three Tree Point Light. Course distance ~ 30 NM.

An alternate course may be posted by the Race Committee, weather depending.

**Course (Casual Classes):**

Start by leaving the starting mark buoy to port, round mark "D" to port, and finish by leaving the finishing mark buoy to port. Course distance ~ 12 NM.

An alternate course may be posted by the Race Committee, weather depending.

**Time Limit:** Nine hours for the first boat in class. Other boats must *finish* the later of 9 hours or 1 hour after of the first boat that *finishes*.

**Other Provisions:**

- CYC Standard Notice of Race applies.
- State and County COVID-19 regulations as appropriate
- Boats must comply with equipment requirement category SER Nearshore, as amended in the Standard NOR and Appendices in this Race Book.
- This race is part of the CYC Center Sound Series.

**Awards:** For the race, 1<sup>st</sup>, 2<sup>nd</sup>, and 3<sup>rd</sup> in class. Awards will be distributed as per directions in Sailing Instructions.

**Registration Fee:**

Included in Season's Pass available to CYC members, or:

\$70 (or \$180 for Center Sound Series). Casual Class \$40 (or \$100 for Center Sound Series).

**Registration Deadline:** March 26, 2021 (Friday)

# Notice of Race

## Puget Sound Spring Regatta (Big Boat)

**Date:** April 17-18, 2021 (Saturday and Sunday)

**Location:** Puget Sound off Shilshole.

**Classes:** PHRF-NW, IRC/ORC, Farr 30, J/105, Melges 24, J/80, Thunderbird, San Juan 24, PNWSSS and other keelboat classes with at least five boats.

### Schedule:

#### Saturday

0900 – 0930 Late check in

1015 – 1045 Practice starts (when available)

1100 First warning signal

#### Sunday

1015 – 1045 Practice starts (when available)

1100 First warning signal

1600 No warning signal after this time

**Courses:** Courses will typically be windward / leeward and may include gates, offsets, and gybe marks. Four to six races are targeted for each day. Target race duration is 20 to 60 minutes.

**Scoring:** A boat's series score will be the total of her race scores, except that a boat's worst score will be excluded if six or more races are completed. This changes RRS A2.1. One race will constitute a series.

**Time Limit:** Ninety minutes for the first boat in class to *finish*. Other boats must *finish* within 30 minutes of the first boat that *finishes*.

### Other Provisions:

- CYC Standard Notice of Race applies.
- State and County COVID-19 regulations as appropriate.
- Boats racing in handicap classes must comply with equipment requirement category SER Nearshore, as amended in the Standard NOR and Appendices in this Race Book. These requirements do not apply to boats racing in one design classes.

**Awards:** 1<sup>st</sup>, 2<sup>nd</sup>, and 3<sup>rd</sup> in class.

### Registration Fee:

Included in Season's Pass available to CYC members, or:

Keelboat \$180

Casual Class \$100

**Registration Deadline:** April 15, 2021 (Thursday)

**Guest Moorage and Dry Storage:** The Shilshole Marina north parking lot adjacent to the dry storage area is no longer available for guest dry storage. CYC is in communication with the Port Of Seattle for a workaround. CYC will communicate this when available. Hoist access and use is the responsibility of boat owners. A limited amount of included guest moorage will be available between piers W and X.

# Notice of Race

## Puget Sound Spring Regatta (Small Boat)

**Date:** April 24-25, 2021 (Saturday and Sunday)

**Location:** Puget Sound off Shilshole.

**Classes:** Hobies, I-14, 505, J/24, Star, Thistle, Tasar, Vanguard 15, RS Aero, Laser, Snipe, Optimist and other centerboard and small keelboat classes with at least five boats may apply.

### **Schedule:**

#### Saturday

0900 – 0930

Late check in

1015 – 1045

Practice starts (when available)

1100

First warning signal

#### Sunday

1015 – 1045

Practice starts (when available)

1100

First warning signal

1600

No warning signal after this time

**Courses:** Courses will typically be windward / leeward and may include gates, offsets, and gybe marks. Four to six races are targeted for each day. Target race duration is 20 to 60 minutes.

**Scoring:** A boat's series score will be the total of her race scores, except that a boat's worst score will be excluded if six or more races are completed. This changes RRS A2.1. One race will constitute a series.

**Time Limit:** Ninety minutes for the first boat in class to *finish*. Other boats must *finish* within 30 minutes of the first boat that *finishes*.

### **Other Provisions:**

- CYC Standard Notice of Race applies.
- State and County COVID-19 regulations as appropriate.
- 

**Awards:** 1<sup>st</sup>, 2<sup>nd</sup>, and 3<sup>rd</sup> in class.

### **Registration Fee:**

Included in Season's Pass available to CYC members, or:

Keelboat

\$180

Centerboard

\$80

**Registration Deadline:** April 22, 2021 (Thursday)

**Guest Moorage and Dry Storage:** The Shilshole Marina north parking lot adjacent to the dry storage area is no longer available for guest dry storage. CYC is in communication with the Port Of Seattle for a workaround. CYC will communicate this when available. Hoist access and use is the responsibility of boat owners. A limited amount of included guest moorage will be available between piers W and X.

# Notice of Race

## Sound Wednesday/Thursday Evening Series

**Date:** There are four Wednesday series and four Thursday series, as follows:

	<u>Wednesday Series 2021</u>	<u>Thursday Series 2021</u>
Spring Series:	Apr 21, 28, May 5, 12, 19	Apr 22, 29, May 6, 13, 20
Interim Series:	May 26, Jun 2, 9, 16, 30	May 27, Jun 3, 10, 17, Jul 1
Summer Series:	Jul 7, 14, 21, 28, Aug 4	Jul 8, 15, 22, 29, Aug 5
Fall Series:	Aug 11, 18, 25, Sep 1, 8	Aug 12, 19, 26, Sep 2, 9

**Location:** Puget Sound off Shilshole.

### Classes:

Wednesdays:	PHRF-NW, IRC/ORC, Farr 30, J/105, Melges 24, J/80, Star, PNWSSS, and others with at least five boats may apply.
Thursdays:	Hobies, I-14, 505, Thistle, Tasar, Vanguard 15, RS Aero, Laser, Snipe, Optimist and other centerboard classes with at least five boats may apply.

### Schedule:

1730 – 1800	Practice starts (when available)
1815	First warning signal
Sunset	No warning signal after this time

**Courses:** Courses will typically be windward / leeward and may include gates, offsets, and gybe marks. Two to four races are targeted for each day. Target race duration is 20 to 60 minutes.

**Scoring:** A boat's series score will be the total of her race scores, except that a boat's worst score will be excluded if at least six races are completed and two scores will be excluded if at least twelve races are completed. This changes RRS A2.1. One race will constitute a series.

**Time Limit:** Ninety minutes for the first boat in class to *finish*. Other boats must *finish* within 30 minutes of the first boat that *finishes*.

### Other Provisions:

- CYC Standard Notice of Race applies.
- State and County COVID-19 regulations as appropriate.
- Eligibility: CYC Adult/Family, Senior, Honorary Life, and Junior members. Prospective members may race in these series for up to 12 months.

**Awards:** 1<sup>st</sup>, 2<sup>nd</sup>, and 3<sup>rd</sup> in class for each series.

### Registration Fee:

Included in Season's Pass available to CYC members, or:

Keelboat	\$180
Centerboard	\$80
Casual Class	\$100

**Registration Deadline:** Monday before the start of each series.

# Notice of Race

## Puget Sound Pursuit Race

**Date:** May 29, 2021 (Saturday)

**Location:** Puget Sound off Shilshole.

**Classes:** PHRF-NW, IRC/ORC,

PNWSSS

**Schedule:**

Saturday

0930 – 0945	Competitor's briefing
1100	First warning signal
1600	No warning signal after this time

**Description:** This is a distance pursuit race. Each boat will be assigned a start time in the sailing instructions, which will be available 72 hours before the start. The intent of the race is to sail a course within the Washington Salish Sea, with specific course lengths and direction selected to reasonably match weather conditions on the day of the race.

**Courses:** Northerly and southerly course options will be described in sailing instructions. The courses will be between approximately 50 and 100 miles. Different courses may be assigned to specific classes. Course selection will be announced 72 hours before the start.

**Other Provisions:**

- CYC Standard Notice of Race applies.
- State and County COVID-19 regulations as appropriate.
- Boats must comply with equipment requirement category SER Nearshore, as amended in the Standard NOR and Appendices in this Race Book.
- **Time Limit:** Full course: 24 hours after the scheduled start of the first boat to begin racing. Shortened course: 12 hours after the scheduled start of the first boat to begin racing
- **Tracking:** Each competitor shall have an operating instance of the Kwindoo app running at all times for tracking and scoring purposes.

**Awards:** 1<sup>st</sup>, 2<sup>nd</sup>, and 3<sup>rd</sup> in class.

**Registration Fee:**

Included in Season's Pass available to CYC members, or:

Keelboat                      \$50

**Registration Deadline:** May 27, 2021 (Thursday)



## Race Information

### CYC Commodore Gibson Cruise



## COMMODORE GIBSON RACE/CRUISE

This event is a weekend cruise with the Commodore Race from Shilshole to Port Ludlow on Saturday, potluck dinner Saturday night, and the Gibson Race from Port Ludlow back to Shilshole on Sunday. Handicaps are applied by adjusting the start times for each boat. See website for more information.

**Date:** August 28-29, 2021 (Saturday and Sunday)

**Location:** Puget Sound from Shilshole to Port Ludlow.

**Schedule:** First warning at 1000 on Saturday and 1100 on Sunday.

**Courses:**

Commodore Race (Saturday): Start at Meadow Point Buoy (LL #16765) and finish at Foulweather Bluff Buoy (LL #16535). Course distance ~ 17.5 NM.

Gibson Race (Sunday): Start at Foulweather Bluff Buoy and finish at Meadow Point Buoy. Course distance ~ 17.5 NM.

The start location may be advanced along the course to facilitate finishing.

**Time Limit:** 1700 on Saturday and 1900 on Sunday.

**Moorage:** Get reservations with CYC group at Port Ludlow Marina, 360-437-0513.

**Contact:** Al Johnson, [ajohnson1101@gmail.com](mailto:ajohnson1101@gmail.com)

# Notice of Race

## Puget Sound Sailing Championship (Small Boat)

**Date:** October 2-3, 2021 (Saturday and Sunday)

**Location:** Puget Sound off Shilshole.

**Classes:** Hobies, I-14, 505, J/24, Star, Thistle, Tasar, Vanguard 15, RS Aero, Laser, Snipe, Optimist and other centerboard and small keelboat classes with at least five boats may apply.

### Schedule:

#### Saturday

0900 – 0930	Late check in
0930 – 0945	Competitor's briefing
1015 – 1045	Practice starts (when available)
1100	First warning signal
After racing	Party at CYC, COVID allowing

#### Sunday

1015 – 1045	Practice starts (when available)
1100	First warning signal
1600	No warning signal after this
After racing	Awards at CYC, COVID allowing

**Courses:** Courses will typically be windward / leeward and may include gates, offsets, and gybe marks. Four to six races are targeted for each day. Target race duration is 20 to 60 minutes.

**Scoring:** A boat's series score will be the total of her race scores with no scores excluded. This changes RRS A2.1. One race will constitute a series.

**Time Limit:** Ninety minutes for the first boat in class to *finish*. Other boats must *finish* within 30 minutes of the first boat that *finishes*.

### Other Provisions:

- CYC Standard Notice of Race applies
- State and County COVID-19 regulations as appropriate..

**Awards:** 1<sup>st</sup>, 2<sup>nd</sup>, and 3<sup>rd</sup> in class.

### Registration Fee:

Included in Season's Pass available to CYC members, or:

Keelboat	\$180
Centerboard	\$80

**Registration Deadline:** September 30, 2021(Thursday)

**Guest Moorage and Dry Storage:** The Shilshole Marina north parking lot adjacent to the dry storage area is no longer available. CYC is working with the Port Of Seattle for a workaroud. CYC will communicate this when available. Hoist access and use is the responsibility of boat owners. A limited amount of included guest moorage will be available between piers W and X.)

# Notice of Race

## Puget Sound Sailing Championship (Big Boat)

**Date:** October 9-10, 2021 (Saturday and Sunday)

**Location:** Puget Sound off Shilshole.

**Classes:** PHRF-NW, IRC/ORC, Farr 30, J/105, Melges 24, J/80, Star, PNWSSS, and others with at least five boats may apply.

### **Schedule:**

#### Saturday

0900 – 0930	Late check in
0930 – 0945	Competitor's briefing
1015 – 1045	Practice starts (when available) First warning signal
1100	Party at CYC, COVID allowing

#### Sunday

1015 – 1045	Practice starts (when available) First warning signal
1100	warning signal
1600	No warning signal after this
After racing	Awards at CYC, COVID allowing

**Courses:** Courses will typically be windward / leeward and may include gates, offsets, and gybe marks. Four to six races are targeted for each day. Target race duration is 20 to 60 minutes.

**Scoring:** A boat's series score will be the total of her race scores with no scores excluded. This changes RRS A2.1. One race will constitute a series.

**Time Limit:** Ninety minutes for the first boat in class to *finish*. Other boats must *finish* within 30 minutes of the first boat that *finishes*.

### **Other Provisions:**

- CYC Standard Notice of Race applies.
- State and County COVID-19 regulations as appropriate.
- Keelboats racing in handicap classes must comply with equipment requirement category USSER Nearshore, as amended. These requirements do not apply to boats racing in one design classes.

**Awards:** 1<sup>st</sup>, 2<sup>nd</sup>, and 3<sup>rd</sup> in class.

### **Registration Fee:**

Included in Season's Pass available to CYC members, or:

Keelboat	\$180
Casual Class	\$100

**Registration Deadline:** October 7, 2021 (Thursday)

# Notice of Race

## Turkey Bowl Regatta

**Date:** November 20-21, 2021 (Saturday and Sunday)

**Location:** Puget Sound off Shilshole.

**Classes:** Hobies, I-14, 505, Star, Thistle, Tasar, Vanguard 15, RS Aero, Laser, Snipe, Optimist and other centerboard and small keelboat classes with at least five boats may apply.

### **Schedule:**

#### Saturday

0900 – 0930	Late check in
0930 – 0945	Competitor's briefing
1015 – 1045	Practice starts (when available)
1100	First warning signal
After racing	Party at CYC, COVID allowing

#### Sunday

1015 – 1045	Practice starts (when available)
1100	First warning signal
1600	No warning signal after this
After racing	Awards at CYC, COVID allowing

**Courses:** Courses will typically be windward / leeward and may include gates, offsets, and gybe marks. Four to six races are targeted for each day. Target race duration is 20 to 60 minutes.

**Scoring:** A boat's series score will be the total of her race scores, except that a boat's worst score will be excluded if six or more races are completed. This changes RRS A2.1. One race will constitute a series.

**Time Limit:** Sixty minutes for the first boat in class to *finish*. Other boats must *finish* within 20 minutes of the first boat that *finishes*.

### **Other Provisions:**

- CYC Standard Notice of Race applies
- State and County COVID-19 regulations as appropriate.

**Awards:** 1<sup>st</sup>, 2<sup>nd</sup>, and 3<sup>rd</sup> in class.

### **Registration Fee:**

Included in Season's Pass available to CYC members, or:

Centerboard	\$60
-------------	------

**Registration Deadline:** November 4, 2021 (Thursday)



# CYC Standard Notice of Race

This section of the Notice of Race applies to all CYC Races identified in this Race Book. It addresses common items that are incorporated into the event specific Notice of Race for each event, except as specifically noted.

The organizing authority is the Corinthian Yacht Club of Seattle (CYC).

## 1 Rules

- 1.1 This regatta will be governed by the rules as defined in the Racing Rules of Sailing (RRS).
- 1.2 US Sailing prescriptions to the following rules apply: RRS 25.1, 32, 34, 60.3, 61.4, 63.1, 63.2, 63.4, 64.4(b), 67, 70.5(a), 76.1, 81, 86.3, 88.2, Appendix G and R. Inclusion of additional prescriptions may be noted elsewhere in the Notice of Race or Sailing Instructions. US Sailing prescriptions are available at [www.ussailing.org](http://www.ussailing.org) and in the US Sailing version of the RRS.
- 1.3 Changes to the rules may be noted elsewhere in the Notice of Race or Sailing Instructions. If the Notice of Race and Sailing Instructions are in conflict, the Sailing Instructions have precedence.
- 1.4 Prior to the publication of the Sailing Instructions, changes to the Notice of Race will be available on the CYC website at [cycseattle.org/racing](http://cycseattle.org/racing). After the publication of the Sailing Instructions, changes to the Notice of Race will be available on the official notice board described in the Sailing Instructions.

## 2 Eligibility and Entry

- 2.1 Entrants must register online at [cycseattle.org/racing](http://cycseattle.org/racing), or by form delivered to CYC, and pay appropriate fees by the registration deadline. Registrations accepted at the discretion of the organizing authority or race committee after the deadline may be assessed a \$20 late fee.
- 2.2 Boats must be insured with valid third-party liability insurance with coverage of at least \$300,000 per incident.
- 2.3 A boat wishing to use sails with identification different from her registered sail number must receive permission from CYC by the registration deadline or when her late registration is accepted. This changes RRS 77.
- 2.4 A boat racing in a handicap class must ensure her handicap is issued and recorded by the handicap class organization before the registration deadline or when her late registration is accepted. Boats participating without a valid class certificate may not be scored and are subject to protest if scored. Her entry fee may not be refunded. A change in a boat's handicap will take effect on the day it is recorded by the handicap class organization. Changes are not retroactive. When a boat's handicap class rating changes between races that are part of a series, the boat remains in the same class in which she started the series.
- 2.5 A boat rated by her handicap class in consideration of water ballast may use water ballast as rated. This changes RRS 51.
- 2.6 Competitors give absolute right and permission for images and video of themselves and their boat to be published for commercial purposes by the

event organizing authority and sponsors and their licensees and may be required to sign a release to complete the boat registration.

- 2.7 Competitors may be required to complete release of liability, depiction release, medical consent, and medical and emergency information forms and agreements to complete the boat registration.
- 3 [DP] Operating and Equipment Requirements
- 3.1 [DP] RRS 40.1 applies for all centerboard boats. In addition, centerboard boat competitors sailing in regattas 1 November through 31 March must also wear a wet suit or dry suit in addition to the required personal floatation device.
- 3.2 [DP] Boats designated in the specific Notice of Race must comply with the equipment requirements of US Sailing's *Safety Equipment Requirements* (SER), according to the category requirement identified, if any, in the Notice of Race. The text of these regulations is available from the US Sailing website at [www.ussailing.org](http://www.ussailing.org). The following changes apply to SER Nearshore:
- (a) SER 2.4 required, except for boats under 9 meters (29 ft) or boats under 12 meters (38 ft) with crew position inboard except briefly to perform a necessary task. For boats that do not meet SER 2.4, RRS 40.1 is in effect.
  - (b) SER 2.4.4 amended to add "Exception: While wire is recommended for durability, if the person in charge believes it to be safer for the crew, lifelines may be high molecular weight polyethylene (HMPE) line with spliced terminations or terminals specifically intended for the purpose. When HMPE is used, the load-bearing portion (core) shall meet or exceed minimum diameter requirements."
  - (c) SER 2.7.2 required for all races.
  - (d) SER 3.7.2 required for all races. Change, "A boat shall have a man overboard pole and flag, with a lifebuoy, a self-igniting light, a whistle, and a drogue attached. A self-inflating..." to "A boat shall have a lifebuoy with a whistle, and a drogue attached. A self-igniting light must also be attached when sailing between sunset and sunrise. A man overboard pole, self-inflating ..."
  - (e) SER 3.22 required for all races
  - (f) SER 3.26 required for all races.

These changes are summarized (for Nearshore) in the SER included in the Appndices.

- 3.3 [DP] Keelboats must comply with federal safety regulations concerning life jackets (33 CFR 175 Subpart B), visual distress signals (33 CFR 175 Subpart C), fire extinguishers (46 CFR 25.30), sound producing devices (33 CFR 83 Subpart D), and navigation lights (33 CFR 83 Subpart C). These are identified in US Coast Guard publication *A Boater's Guide to the Federal Requirements for Recreational Boats*, available at [publications.usa.gov](http://publications.usa.gov) or [www.uscgboating.org](http://www.uscgboating.org).
- 3.4 [DP] The race committee or technical committee may inspect a boat at any time before or after racing for compliance with requirements.
- 4 Scoring
- 4.1 The time limit is the maximum allowable time from a boat's starting signal to her finishing time or a time of day. A boat that does not finish within the time limit will be scored Did Not Finish (DNF). This changes RRS 35.

- 4.2 A boat scored OCS, NSC, DNF, RET, DSQ, DNE, UFD, or BFD shall be scored points for the finishing place one more than the number boats *starting, sailing the course, and finishing* and not retiring or being disqualified. A boat scored DNC or DNS shall be scored points for the finishing place two more than the number boats *starting, sailing the course, and finishing* and not retiring or being disqualified. This changes RRS A5.2.
- 4.3 Corrected times for PHRF-NW handicap classes will be calculated using the Time on Distance method.
- 5 Sailing Instructions
- 5.1 Sailing Instructions will be available two days before the regatta on the CYC website at [www.cycseattle.org/racing](http://www.cycseattle.org/racing) or, if not available on the website, on the notice board at the CYC clubhouse.
- 6 Risk Statement
- 6.1 RRS 3 states: 'The responsibility for a boat's decision to participate in a race or to continue to race is hers alone.' By participating in this event each competitor agrees and acknowledges that sailing is a potentially dangerous activity with inherent risks. These risks include strong winds and rough seas, sudden changes in weather, failure of equipment, boat handling errors, poor seamanship by other boats, loss of balance on an unstable platform and fatigue resulting in increased risk of injury. Inherent in the sport of sailing is the risk of permanent, catastrophic injury or death by drowning, trauma, hypothermia or other causes. Consequently, the race organizers (organizing authority, race committee, technical committee, protest committee, host club, sponsors, or any other organization or official) will not be responsible for damage to any boat or other property or the injury to any competitor, including death, sustained as a result of participation in this event. By participating in this event, each competitor agrees to release the race organizers from any and all liability associated with such competitor's participation in this event to the fullest extent permitted by law.
- 6.2 Restrictions on resident activities and business operations have been put in place by government authorities to control the spread of COVID 19 virus. These restrictions change frequently. CYC has no jurisdiction over the operation of boats (which are the private property of others) participating in CYC events outside the scope of the Racing Rules of Sailing. By registering and participating in a CYC event, the boat owner/operator acknowledges that various COVID 19 restrictions may apply and takes full responsibility for operating under those applicable restrictions. CYC is not responsible for any participant's failure to follow any such restrictions.



# Appendices

## US Sailing Safety Equipment Requirements (SER)

Nearshore Category as Amended by the CYC Notice of Race

Section Name	#	Requirement	Nearshore
Definition	1.0.3	Nearshore: Races primarily sailed during the day, close to shore, in relatively protected waters.	Required
Overall: Responsibility	1.2	The safety of a boat and her crew is the sole and inescapable responsibility of the "person in charge", as per RRS 46, who shall ensure that the boat is seaworthy and manned by an experienced crew with sufficient ability and experience to face bad weather. S/he shall be satisfied as to the soundness of hull, spars, rigging, sails and all gear. S/he shall ensure that all safety equipment is at all times properly maintained and safely stowed and that the crew knows where it is kept and how it is to be used.	Required
Overall: Responsibility	1.2.1	Should there be an incident during a race the Organizing Authority or US Sailing may conduct an investigation to determine the facts of the incident and provide recommendations. By participating in a race conducted under the SER, the person in charge, each competitor and boat owner agrees to reasonably cooperate with the organizing authority and US Sailing in the development of an independent incident report.	Required
Overall: Inspections	1.3	A boat may be inspected at any time by an equipment inspector or measurer appointed for the event. If she does not comply with these regulations, her entry may be rejected or she will be subject to a protest filed by the RC. A Violation of the Safety Equipment Requirements may result in a penalty other than disqualification.	Required
Overall: Equipment and Knowledge	1.4	All equipment required shall function properly, be regularly checked, cleaned and serviced, and be of a type, size and capacity suitable for the intended use and size of the boat and the size of the crew. This equipment shall be readily accessible while underway and, when not in use, stored in such a way that deterioration is minimized.	Required
Overall: Secure Storage	1.5	A boat's heavy items such as batteries, stoves, toolboxes, anchors, chain and internal ballast shall be secured.	Required
Overall: Watertight Integrity	1.7	A boat's hull, including, deck, coach roof, windows, hatches and all other parts, shall form an integral watertight unit, and any openings in it shall be capable of being immediately secured to maintain this integrity.	Required
Hull and Structure: Stability	2.2.3	A boat with moveable or variable ballast (water or canting keel) shall comply with the requirements of Appendix K.	Required
Hull and Structure: Lifelines	2.4.1	A boat's deck including the headstay shall be surrounded by a suitably strong enclosure, typically consisting of lifelines and pulpits, meeting the requirements in 2.4.2 to 2.4.8.  <b>Does not apply for boats under 9 meters (29 ft) or boats under 12 meters (38 ft) with crew position inboard except briefly to perform a necessary task.</b>	<b>CYC Required NOR 3.2(a)</b>

Section Name	#	Requirement	Nearshore
Hull and Structure: Lifelines	2.4.2	A boat's stanchion and pulpit bases shall be within the working deck.	<i>CYC Required NOR 3.2(a)</i>
Hull and Structure: Lifelines	2.4.3	Bow pulpits may be open, but the opening between the vertical portion of stanchion pulpit and any part of the boat shall not exceed 14.2" (360mm).	<i>CYC Required NOR 3.2(a)</i>
Hull and Structure: Lifelines	2.4.4	Lifelines shall be uncoated stainless steel wire. A multipart-lashing segment not to exceed 4" per end termination for the purpose of attaching lifelines to pulpits is allowed. Lifelines shall be taut.  <b>Exception: While wire is recommended for durability, if the person in charge believes it to be safer for the crew, lifelines may be high molecular weight polyethylene (HMPE) line with spliced terminations or terminals specifically intended for the purpose. When HMPE is used, the load-bearing portion (core) shall meet or exceed minimum diameter requirements.</b>	<i>CYC Required NOR 3.2(b)</i>
Hull and Structure: Lifelines	2.4.4.1	Lifeline deflection shall not exceed the following: a) When a deflecting force of 9 lbs (40N) is applied to a lifeline midway between supports of an upper or single lifeline, the lifeline shall not deflect more than 2" (50mm). This measurement shall be taken at the widest span between supports that are aft of the mast. b) When a deflecting force of 9 lbs (40N) is applied midway between supports of an intermediate lifeline of all spans that are aft of the mast, deflection shall not exceed 5" (120mm) from a straight line between the stanchions.	<i>CYC Required NOR 3.2(a)</i>
Hull and Structure: Lifelines	2.4.5	The maximum spacing between lifeline supports (e.g. stanchions and pulpits) shall be 87" (2.2m).	<i>CYC Required NOR 3.2(a)</i>
Hull and Structure: Lifelines	2.4.6	Boats under 30' (9.14m) shall have at least one lifeline with 18" (457mm) minimum height above deck, and a maximum vertical gap of 18" (457mm). Taller heights will require a second lifeline. The minimum diameter shall be 1/8" (3mm).	<i>CYC Required NOR 3.2(a)</i>
Hull and Structure: Lifelines	2.4.7	Boats 30' and over (9.14m) shall have at least two lifelines with 24" (762mm) minimum height above deck, and a maximum vertical gap of 15" (381mm). The minimum diameter will be 5/32" (4mm) for boats to 43' (13.1m) and 3/16" (5mm) for boats over 43' (13.1m).	<i>CYC Required NOR 3.2(a)</i>
Hull and Structure: Lifelines	2.4.8	Toe rails shall be fitted around the foredeck from the base of the mast with a minimum height of 3/4" (18mm) for boats under 30' (9.14m) and 1" (25mm) for boats over 30'. An additional installed lifeline that is 1-2" (25-51mm) above the deck will satisfy this requirement for boats without toerails.	<i>CYC Required NOR 3.2(a)</i>
Hull and Structure: Lifelines	2.4.9	Trimarans are exempted from the lifeline requirement where there is a trampoline outboard of the main hull, except that a lifeline must run from the top of a bow pulpit to the forward crossbeam at the outboard edge of the bow net or foredeck. Catamarans with trampoline nets between the hulls are exempted from the lifeline requirement. All catamarans are exempted from the need for pulpits and lifelines across the bow.	<i>CYC Required NOR 3.2(a)</i>
Hull and Structures: Dewatering pumps	2.5.3	A boat shall have a manual bilge pump of at least a 10 GPM (37.8 liter per minute) capacity.	<b>Required</b>

Section Name	#	Requirement	Nearshore
Hull and Structure: Mechanical Propulsion	2.7.2	A boat shall have a mechanical propulsion system that is quickly available and capable of driving the boat at a minimum speed in knots equivalent to the square root of LWL in feet (1.8 times the square root of the waterline in meters) for 4 hours.	<i>CYC Required NOR 3.2(c)</i>
Safety Equipment: Personal	3.1.3	Each crewmember shall have a life jacket intended for small boat sailing or other active boating. Each such life jacket shall be USCG, ISO, or applicable government approved or shall meet the ocean requirement of 3.1.1.	<b>Required</b>
Safety Equipment: Navigation Lights	3.3.1	A boat racing between sunset and sunrise shall carry navigation lights that meet U. S. Coast Guard or applicable government requirements mounted so that they will not be obscured by the sails nor be located below deck level.	<b>Required</b>
Safety Equipment: Fire Extinguishers	3.4	A boat shall carry fire extinguisher(s) that meets U.S. Coast Guard or applicable government requirements, when applicable.	<b>Required</b>
Safety Equipment: Sound Producing Equipment	3.5	A boat shall carry sound-making devices that meets U.S. Coast Guard or applicable government requirements, when applicable.	<b>Required</b>
Safety Equipment: Visual Distress Signals	3.6.6	A boat shall carry U.S. Coast Guard (or applicable government entity) flares meeting day-night requirements not older than the expiration date.	<b>Required</b>
Safety Equipment: Man Overboard	3.7.2	A boat shall have a <b>lifebuoy with a whistle, and a drogue attached. A self-igniting light must also be attached when sailing between sunset and sunrise. A man overboard pole, self-inflating Man Overboard Module, Dan Buoy or similar device will satisfy this requirement. Self-inflating apparatus shall be tested and serviced in accordance with the manufacturer's specifications. These items shall be stored on deck, ready for immediate use, and affixed in a manner that allows for a "quick release".</b>	<i>CYC Required NOR3.7(d)</i>
Safety Equipment: Man Overboard	3.7.3	A boat shall have a throwing sock-type heaving line of 50' (15m) or greater of floating polypropylene line readily accessible to the cockpit.	<b>Required</b>
Safety Equipment: Man Overboard	3.7.4	A boat shall carry a Coast Guard or applicable government approved "throwable device". If the device carried under 3.7.1 or 3.7.2 satisfies this requirement, then no additional device is needed.	<b>Required</b>
Safety Equipment: Emergency Communications	3.8.3	A boat shall have a VHF radio which may be fixed or handheld.	<b>Required</b>
Safety Equipment: Navigation	3.19.1	A boat shall have a permanently mounted magnetic compass independent of the boat's electrical system suitable for steering at sea.	<b>Required</b>
Safety Equipment: Damage Control	3.22	A boat shall carry soft plugs of an appropriate material, tapered and of the appropriate size, attached or stowed adjacent to every through-hull opening.	<i>CYC Required NOR 3.2(e)</i>
Gear: Anchoring	3.23	A boat shall carry one anchor, meeting the anchor manufacturer's recommendations based on the yacht's size, with a suitable combination of chain and line.	<b>Required</b>
Gear: Lights	3.24.3	A boat shall carry at least two watertight flashlights with spare batteries in addition to the requirement of 3.24.1.	<b>Required</b>
Gear: Medical Kits	3.25	A boat shall carry a first aid kit and first aid manual suitable for the likely conditions of the passage and the number of crew aboard.	<b>Required</b>
Gear: Radar	3.26	A boat shall carry an 11.5" (292mm) diameter or greater	<i>CYC</i>

<b>Section Name</b>	<b>#</b>	<b>Requirement</b>	<b>Nearshore</b>
Reflectors		octahedral radar reflector or one of equivalent performance.	<b>Required NOR 3.2(f)</b>
Gear: Dewatering	3.27.2	A boat shall carry one sturdy bucket of at least two gallons (8 liters) capacity with lanyards attached.	<b>Required</b>
Skills: Man Overboard	4.2	Annually, two-thirds of the boat's racing crew shall practice man-overboard procedures appropriate for the boat's size and speed. The practice shall consist of marking and returning to a position on the water, and demonstrating a method of hoisting a crewmember back on deck, or other consistent means of reboarding the crewmember.	<b>Required</b>
Skills: Crew Training	4.4	As required in 1.2 above the person in charge shall ensure that all crew members know where all emergency equipment is located and how to operate the equipment. In addition, the person in charge and crew should discuss how to handle various emergency situations including Crew Overboard, Grounding, Loss of steering, Flooding, Fire, Dismasting, and Abandon Ship.	<b>Required</b>
Skills: Crew Training	4.6	Lifejackets as described in 3.1.1 – 3.1.3 should be worn by all crew on deck in any conditions where recovery may be difficult. It is recommended that lifejackets be worn by all crew on deck unless the person in charge has indicated that they may be set aside.	<b>Required</b>

## Puget Sound Sailboat Safety Regulations

2014 Revision as adopted by Corinthian Yacht Club of Seattle, Seattle Yacht Club, Shilshole Bay Yacht Club, and Sloop Tavern Yacht Club

We must share Puget Sound with its commercial traffic, including many deep-water vessels and tows. It is sobering to note that, if your boat is one mile dead-ahead of a freighter coming down the Sound at normal speed, and the freighter's helm is put hard over to avoid you, the freighter's bow will miss you, but her stern will not! Obviously, this implies that early and decisive action is required to keep your boat out of the path of a large oncoming vessel or tow. The requirements of this document may be incorporated into an event by reference in a notice of race.

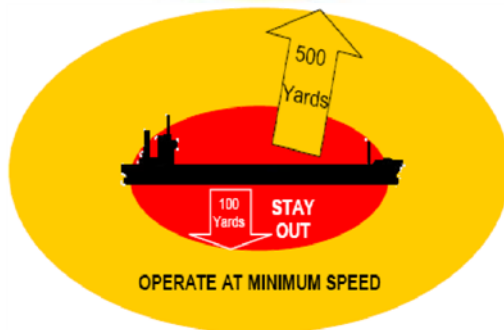
1. Yachts must not sail across a tow line, too close ahead, or too close alongside of commercial traffic. Deep water vessels have limited ability to change course and speed. Barges under tow can yaw unexpectedly well out to the side at speeds essentially the same as they are being towed. Yachts should not pass less than one mile ahead and 1/4 mile to the side of large vessels.
2. Rule 10 of the International and Inland Rules to Prevent Collisions at Sea (COLREGS) requires that no power-driven vessel less than 20 meters (66 feet) in length, and no sailing vessel (of any size) may impede the safe passage of a power-driven vessel following a Vessel Traffic System (VTS) Lane.
3. Rule 9 of the COLREGS requires that no power vessel of less than 20 meters (66 feet) in length and no sailing vessel (of any length) shall impede the safe passage of any vessel which can navigate only within a narrow channel or fairway. Puget Sound can be considered a "narrow channel" for most large commercial traffic. "Impede" means to cause to alter speed or course or to take evasive action.
4. A yacht in position where it may impede commercial traffic must exit from the "danger area" immediately, under auxiliary power if necessary. If power is used, it must be reported to the Race Committee at the finish line. Also, a written report must be made on a protest form, showing the location, time, duration of power use, speed, direction of exit, and that the competitive position of the yacht was not improved. If the last item cannot be demonstrated adequately, a time penalty may be imposed.
5. Navigation lights must be shown between sunset and sunrise as required by the International Rules of the Road.
6. Observed and/or reported violations of the safety regulations may be protested. The Race Committee shall have the option of issuing a "warning" when deemed appropriate. Warnings are recorded and may be considered when judging any future reports.
7. CYC Seattle complies with Washington State Marine Mammal protection regulations and guidelines. Download details here: [www.bewhalewise.org](http://www.bewhalewise.org)

## US Coast Guard Warning

The following information was provided by the US Coast Guard.

**Do not approach within 100 yards of any Navy Vessel, Washington State Ferry, or Ship.** If you need to pass within 100 yards of these vessels in order to ensure a safe passage in accordance with the Navigation Rules, you must contact the ship on VHF-FM channel 16 or 13. (33 CFR 165.2030, 165.1317, 165.1313)

**You must operate at minimum speed within 500 yards of any of these vessel types.**



**Violations of these Security Zones are a felony offense, punishable by up to 6 years in prison and/or up to \$250,000 in fines.**

# Contacts

## Leadership Team

Commodore	Shelagh Hansen	<a href="mailto:macaulay.shelagh@gmail.com">macaulay.shelagh@gmail.com</a>
Vice Commodore	Charlie Macaulay	<a href="mailto:csmacaulay@outlook.com">csmacaulay@outlook.com</a>
Rear Commodore	Wanda Creitz	<a href="mailto:wanda28@hotmail.com">wanda28@hotmail.com</a>
Jr. Staff Commodore	David Barnes	<a href="mailto:davidvvbarnes@hotmail.com">davidvvbarnes@hotmail.com</a>
Secretary	Christa Bassett Ross	<a href="mailto:cbr@sitefolio.com">cbr@sitefolio.com</a>
Treasurer	Remmert Wolters	<a href="mailto:remmertw@frostnw.com">remmertw@frostnw.com</a>
Fleet Captain Race	Matthew Wood	<a href="mailto:matthewewood@outlook.com">matthewewood@outlook.com</a>
Fleet Captain Cruise	Chris McMuldroch	<a href="mailto:mcmuldroch@comcast.net">mcmuldroch@comcast.net</a>
Director (2021-22)	Mark Bradner	<a href="mailto:markbradner@comcast.net">markbradner@comcast.net</a>
Director (2021-22)	Mary Cronkhite-Johns	<a href="mailto:heymbcj@gmail.com">heymbcj@gmail.com</a>
Director (2021-22)	Peter Nelson	<a href="mailto:nelson.peter1@live.com">nelson.peter1@live.com</a>
Director (2021)	Mara Barckert	<a href="mailto:marabarckert@gmail.com">marabarckert@gmail.com</a>
Director (2021)	Cathy VanAntwerp	<a href="mailto:cathy@vanantwerp.net">cathy@vanantwerp.net</a>
Director (2020-21)	Stuart Burnell	<a href="mailto:stuartburnell@outlook.com">stuartburnell@outlook.com</a>

## Race Organization Contacts

Fleet Captain Race	Matthew Wood	<a href="mailto:matthewewood@outlook.com">matthewewood@outlook.com</a>
Lake Protest Chair	Wayne Balsiger	<a href="mailto:webalsiger@comcast.net">webalsiger@comcast.net</a>
Sound Protest Chair	Jared Hickman	<a href="mailto:jared@celebrationboatworks.com">jared@celebrationboatworks.com</a>
PHRF Handicapper	Matthew Wood	<a href="mailto:matthewewood@outlook.com">matthewewood@outlook.com</a>

## Business Management Staff

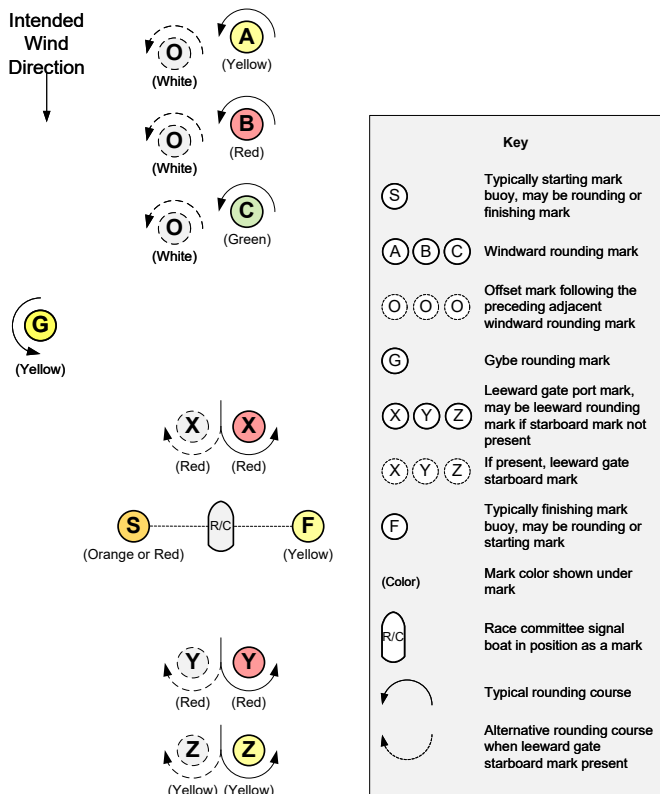
Business Manager	Cindy Barrett	<a href="mailto:office@cycseattle.org">office@cycseattle.org</a> 206-789-1919
------------------	---------------	--

## Principle Race Officers (PROs)

Lake PRO	Troy Childs	<a href="mailto:tchilds@auburnvw.com">tchilds@auburnvw.com</a>
Sound PRO	Egor Klevak	<a href="mailto:comorado@gmail.com">comorado@gmail.com</a>
Senior PRO	Charley Rathkopf	<a href="mailto:charley-cyc@rathkopf.org">charley-cyc@rathkopf.org</a>
PRO-at-Large	Geoff Pease	<a href="mailto:cyc@pease.org">cyc@pease.org</a>

## Buoy Course Marks (relative positions)

This is a typical configuration. Please note that the Sailing Instructions for a particular regatta may use modified or different mark descriptions.



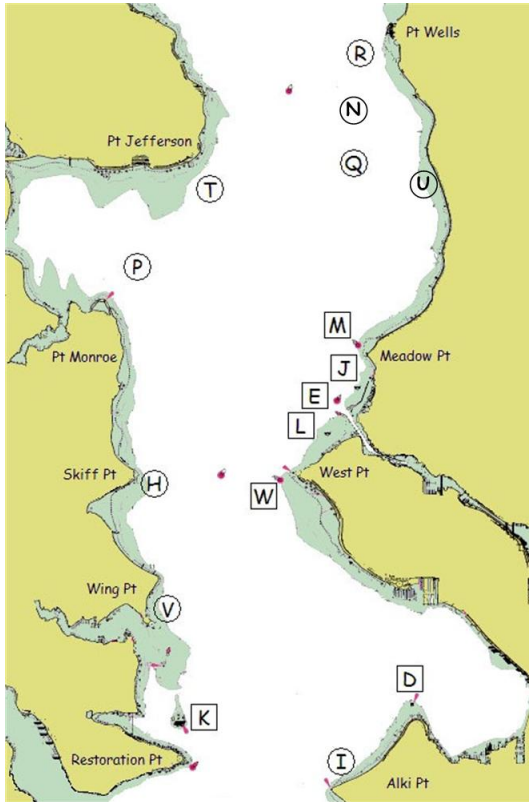
The course diagram for buoy course marks shows the general orientation of the race committee signal boat ("R/C"), other marks (identified by the letters S, A, B, C, O, G, X, Y, Z and F), and the intended wind direction. All buoy course marks other than the race committee signal boat are inflatable buoys. Positions are approximate and the diagram is not to scale.

Notes:

- S When a starting mark for a downwind start, may be on either side of the race committee signal boat.



## Puget Sound Geographic Marks (fixed positions)



Bearings are magnetic. Distances are nautical miles (NM). Bearings, distances, and positions are approximate. Each temporary mark is shown with its label in a circle. Each permanent mark is near its label in a square box.

- D Duwamish Head Lt. (LL #16910)
- E Shilshole Bay Entrance Lighted Buoy G "1" (LL #18125)
- H Temporary mark 0.3 NM E of Skiff Pt.
- I Temporary mark 0.5 NM N of Alki Pt.
- J Round ball buoy with flag 0.25 NM SSW of marina N entrance
- K Blakely Rock (LL #16830)
- L White buoy 0.5 NM SW of marina S entrance
- M Meadow Pt. Buoy (LL #16765)
- N Temporary mark 1.0 NM E of Traffic Separation Lane Lighted Buoy SF (LL #16745)
- P Temporary mark 0.5 NM NNE of Pt. Monroe
- Q Temporary mark 3.0 NM bearing 340° from Meadow Pt. Buoy
- R Temporary mark 0.5 NM SW of Pt. Wells
- T Temporary mark 0.5 NM SE of Pt. Jefferson
- U White spar buoy 2.9 NM bearing 6° from Meadow Pt. Buoy at 47° 44.4N, 122° 22.95W
- V Temporary mark 0.3 NM NNE of Wing Pt.
- W West Pt. Buoy (LL #16805)

# CYC Business Members

These businesses are corporate members of Corinthian Yacht Club. Please thank them for their support and involvement in sailing.





*Sharing the Sailing Community*



Renovated Clubhouse at Shilshole Bay Marina, Ballard

Photo by John Rahn

Because you love sailing, please consider joining the Corinthian Yacht Club of Seattle. We need all the people who enjoy the club to sign up and be a part of supporting our community through our organization. Many of our members continue to be members of other clubs, each supporting our sport in their own way. Even if you don't happen to own a boat, you can own our yacht club and claim your equal stake and influence in supporting our sailing way of life through the club. The Adult/Family membership is just \$42 a month. Please talk with your friends who are members about joining.

7755 Seaview Ave NW, Pier V  
Seattle, Washington 98117  
[www.cycseattle.org](http://www.cycseattle.org) • 206.789.1919 • [office@cycseattle.org](mailto:office@cycseattle.org)