

VACTOR REPLACEMENT PARTS

MEN
WORKING
PREFERRED



BELL HOUSING

TRANSMISSIONS

CLUTCHES

SHAFTS

INLET

TELESCOPIC

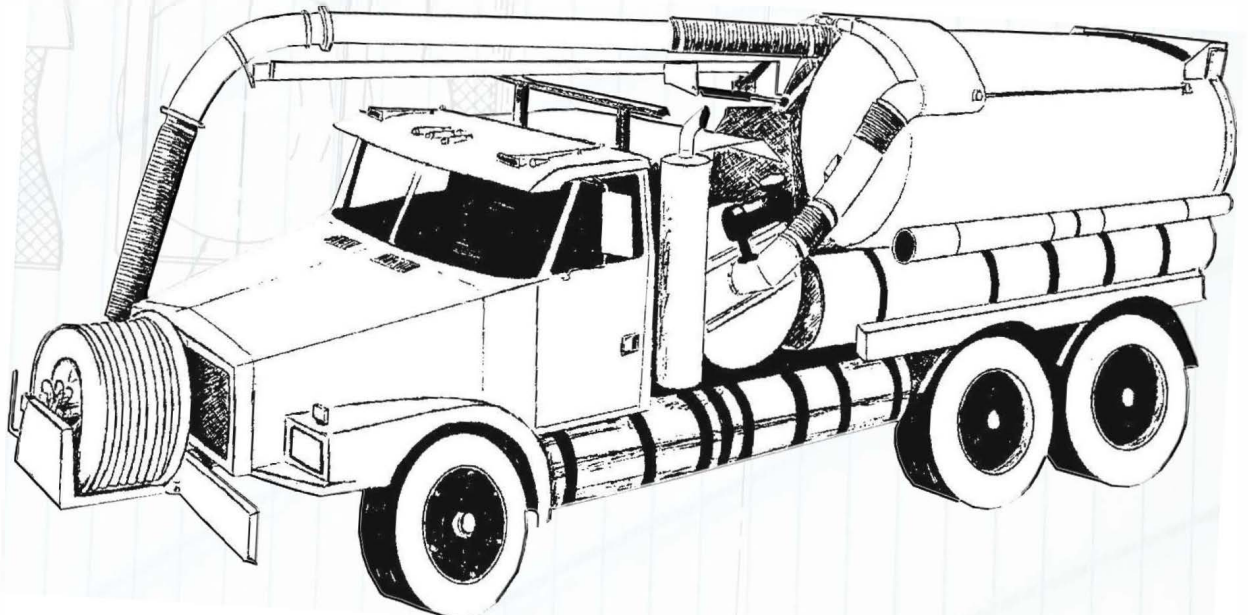
HOSE REELS

ROTATING

RELIEF

VALVES

PILOT





Corporate Office: W137 N5560 Williams Place • Menomonee Falls, WI 53051 • Tele: 800.666.0766 •
262.783.6666 • Fax: 800.691.0031

TERMS AND CONDITIONS

ASPC* has general terms of **NET 30 DAYS** for all open account customers. **At 45 days** past due, the account will be put on CREDIT HOLD until unpaid balances are settled and terms will revert to C.O.D. Any order from credit hold customers will be withheld from production until the account is settled. New customers will be on C.O.D., VISA or MasterCard basis until credit is approved. This process takes about three to five working days. ASPC accepts VISA or MasterCard credit cards **only!**

Freight Terms:

Freight is prepaid and added to the invoice, except C.O.D.; then it is collected. Ground freight is paid one way on warranty repairs. **ASPC does not pay for overnight or second day air for warranty repairs.** If the customer requests either of these services, they will be billed the difference between ground and overnight or second day air service. ASPC will not accept products returned as freight collect.

There is a minimum of **\$15.00** per order. Any orders received by fax or verbally will automatically be billed at an amount per item to bring it to the **\$15.00** amount.

ALL orders **verbally phoned in** will be the responsibility of the recipient. ASPC will NOT be responsible for errors unless we receive a hard copy of the order before it is shipped. ALL orders can be faxed or e-mailed to Customer's Service at 1-800-691-0031 or sales@americansewerparts.com. Our fax machine operates 24 hours per day – 7 days a week!

Wisconsin Customer Service operates 8:00 am to 5:00 pm CST.

Due to the large variations in shipping methods and daily surcharges, ASPC **can not** do freight quotes! We ship our merchandise the most economical and beneficial method.

If a delivery of merchandise by one of our shipping companies is attempted and they are unable to deliver on the 1st attempt any additional charges for re-delivery will be charged to the recipient. Any additional charges for redirecting a delivery to the wrong address that was NOT in error by ASPC will be charged against the original invoice.

Invoices are created the day after a shipment. For your convenience, The Tracking Number or Truck Pro Number is indicated on the bottom left corner of the invoice.

ASPC is NOT responsible for discrepancies or damages NOT reported within 7 days after delivery of the product!

ALL CLAIMS:

ASPC **MUST** be notified within **7 working days** from the date of delivery of products for any damaged shipments or shortage/overage of goods. All replacement merchandise will be billed at normal terms and payment by recipient under those terms is required. For claims filed with any of our shipping companies, credit will be issued upon receipt of payment of the claim from the appropriate shipping company.

When a shipment is damaged, note the damage while the driver is there. Notify ASPC immediately. Keep all of the products and the shipping containers. If possible, take digital pictures or regular photographs and send them to ASPC either by mail or e-mail to sales@americansewerparts.com. This will speed up the claim process. We will issue a claim asking for compensation. (a copy of the claim will be faxed to you) As soon as the shipping company settles the claim you will be notified by ASPC. Note: FED-EX may pick up the damaged items and containers for examination.

RETURNS:

ASPC will **NOT** issue call tags for any returns or repairs!

Any merchandise returned for Electronic Repair requires a Repair Order Number. Obtain this number by calling ASPC and requesting a repair order number for Electronic Repair *before* shipping the item to ASPC. This repair order number **MUST** appear on the outside of the box. Any box received without a return number will be refused delivery and returned to sender. This number is good for 15 days **ONLY!** Any item received without a number may cause a delay in the system for processing the repair.

Any merchandise returned for Sewer Repair requires a repair order number. This repair order number must be obtained from customer service *before* shipping to ASPC. The repair order number **MUST** appear on the outside of the box. Any box received without a Repair Order number will be refused delivery and returned to sender. This number is good for 15 days **ONLY!**

Any merchandise returned for credit that was ordered incorrectly by the recipient, will be charged a 15% restocking fee if the items are stock items. Any items that are, made to order, will require at 25% restocking fee. *Special Order Parts* are NOT returnable! No freight credit will be issued for incorrect orders!

Any merchandise returned due to ASPC error will receive 100% credit for the merchandise and freight charges from the original order. (example: original order shipped Fed-EX Saver) Credit will be for Fed-EX Saver freight.

ALL returns **MUST** have an RGA (Return Goods Authorization) number issued from customer service. The RGA number must be requested within **7 working days** from the date the order is received. You may request this number from customer service. You will need the part number, quantity to be returned and invoice number from the order. Only items requested for return will be credited. The RGA number **MUST** appear on the outside of the box. Any box received without an RGA number will be refused and returned to sender. This number is good for 15 days **ONLY!**

Wisconsin Customer Service Hours: 8:00 am to 5:00 pm Central Time Zone!

We as a company (ASPC) appreciate your business. With that in mind...We make every effort to keep our costs and your prices down. Following the above guidelines will help All of us to keep our costs and prices down.

"It's amazing what we can do together"



Date: _____

(Check One)

Comments:

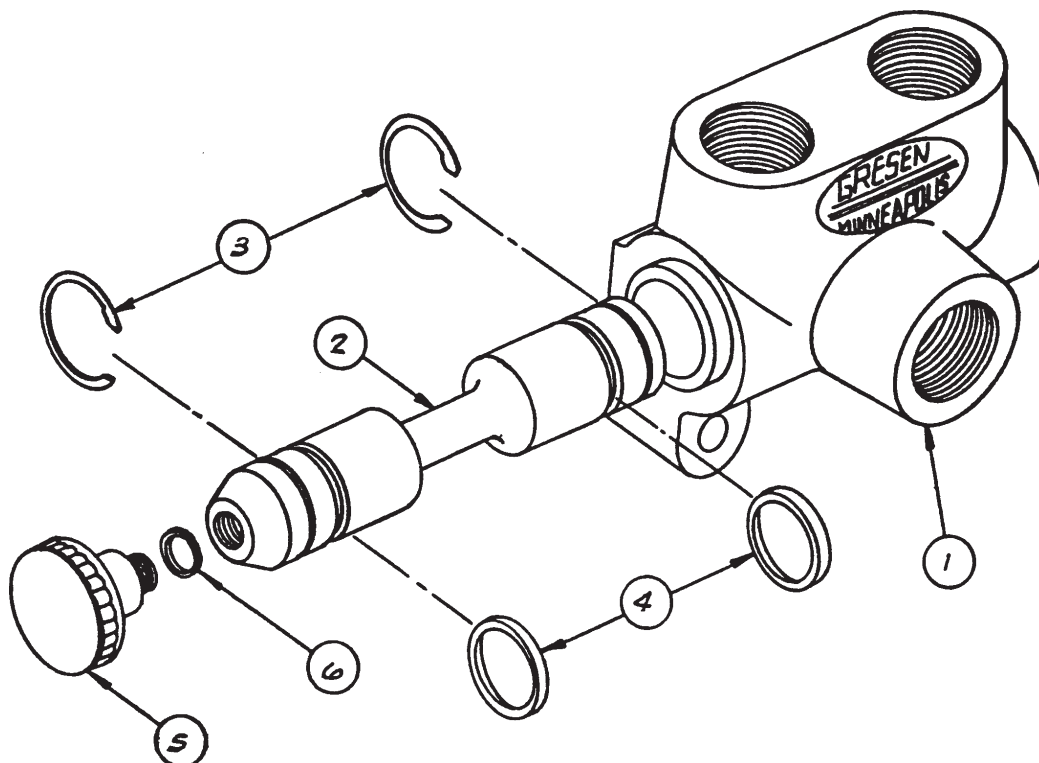
For Next Day delivery, fax by 3:00 p.m., CST.

Vactor Replacement Parts Catalog

TABLE OF CONTENTS

<u>DESCRIPTION</u>	<u>PAGE #</u>
Selector Valve	1
4-Way Pilot Valve	2
Water Relief Valve 300/700 PSI	3
Water Fill Gauge 26"/45"	4
Water Gun Assembly	5
5 Button Pendant Control – W/4-Way Boom	6 & 7
7 Button Pendant Control	8 & 9
ASPC 38" Vacuum Fans	10
Air Chamber Assemblies – 800, 810, & 1200	11
Cyclone Weldments – 2100 Fan	12
Cyclone Weldments – 2100 Blower	13
Cyclone Weldments – 2045	14
Cyclone Weldments – 800 & 1200	15
Vacuum Box Inlet Assembly	16
Inlet Hose Installation	17
Inlet Hose Installation	18
4 Ft. Telescoping Tube Installation	19
8 Ft. Telescoping Tube Installation	20
Rotating/Telescopic Hose Reel – Installation A	21 & 22
Rotating/Telescopic Hose Reel – Installation B	23 & 24
Ball Float Installation	25
Float Indicator Assembly	26
Lower Door Lock Assembly	27
Rear Door Lock Assembly	28
Single Stage Transmission Clutch & Bell Housing Assemblies	29 & 30
Dual Stage Transmission Clutch & Bell Housing Assemblies	31 & 32
Single Stage Transmission with #3 Bell Housing – Old Style	33 & 34
Single Stage Transmission with #4 Bell Housing – Old Style	35 & 36
Single Stage Transmission with #3 Bell Housing – New Style	37 & 38
Single Stage Transmission with #4 Bell Housing – New Style	39 & 40
Single Stage Transmission with \$4 Bell Housing – New Style	41 & 42
Vactor Style High Pressure Water Pump – 1981 & Older	43 & 44
Vactor Style High Pressure Water Pump - Newer 1981	45 & 46
Vactor Style High Pressure Water Pump – 2100	47 & 48
Heat Exchanger	49
Footage Counter Assembly	50
"Y" Pattern Strainer 2 & 3 Inch	51
Fan Duct Installation	52

SELECTOR VALVE

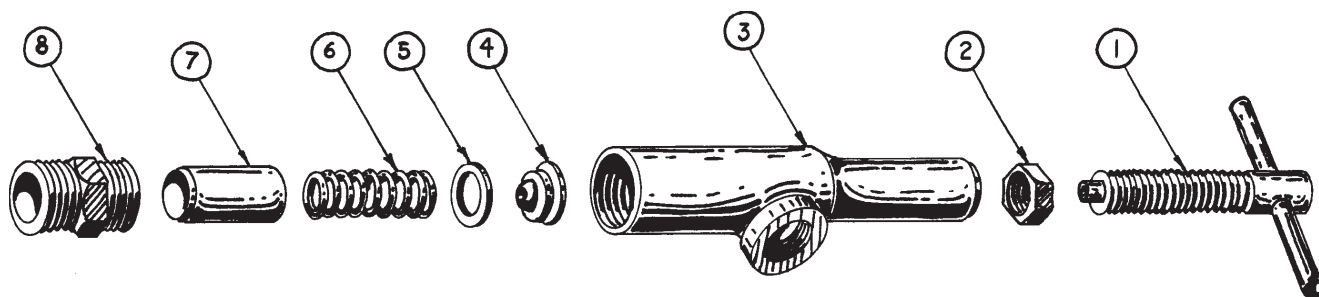


Used on Models 810, 800, 1200 and Early 2100. Operates front hose reel hyd. motor and hyd. hose reel tipping cyc. 60 and 80 GPM reel. Also used on the optional recirculation system.

ITEM #	ASPC PART #	DESCRIPTION	QUANTITY NEEDED
Selector Valves			
	U20897	Complete Assembly	1
1	U42872	Housing (NOT Sold Separately)	1
2	U42873	Valve Spool	1
3	U42874	Snap Ring	2
4	U42875	Spool Seal	2
5	U42876	Control Knob	1
6	U42877	Lockwasher	1
For Optional Flushing System			
	U20329	Complete Assembly	1
1	U43143	Housing (NOT Sold Separately)	1
2	U43144	Valve Spool	1
3	U43145	Snap Ring	2
4	U43146	Spool Seal	2
5	U42876	Control Knob	1
6	U42877	Lockwasher	1
	U43147	Seal Kit (Items # 3 & 4)	
	U42879	Control Knob (Items 5 & 6)	

This diagram shows an exploded view of a mechanical assembly. The components are numbered 1 through 14. The assembly consists of a base unit (1) with a label 'U42517', a central shaft (2) with various seals and bearings (3, 4, 5, 6, 7, 8, 9, 10, 11, 12, 13), and a top cap (14). The shaft is supported by bearings (3, 4, 5, 6, 7, 8, 9, 10, 11, 12, 13) and sealed with O-rings (1, 2, 3, 4, 5, 6, 7, 8, 9, 10, 11, 12, 13). The top cap (14) is secured with screws (1, 2, 3, 4, 5, 6, 7, 8, 9, 10, 11, 12, 13).

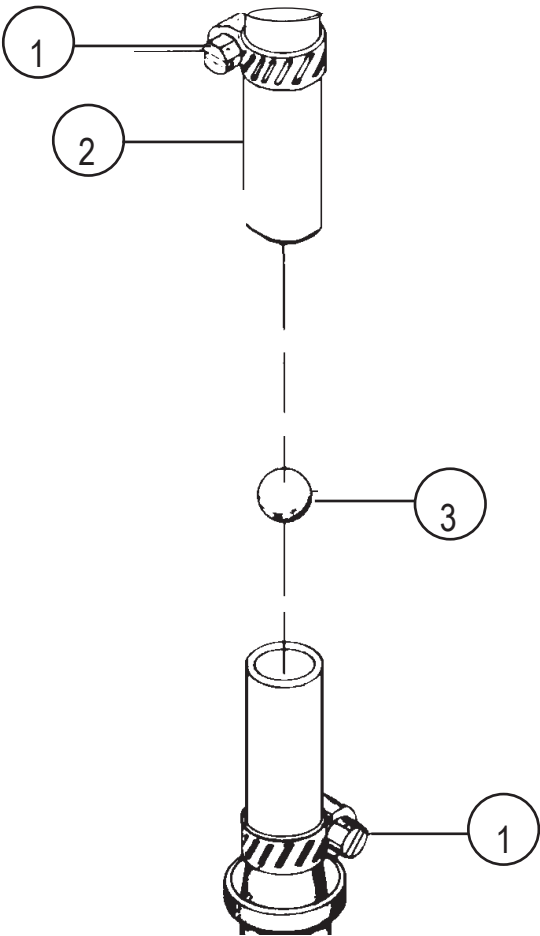
2



ITEM #	ASPC PART #	DESCRIPTION	QUANTITY NEEDED
Water Relief Valves			
	U40029A	Water Relief Valve - 300 PSI	1
1	U41692	* Adjusting Screw Assembly	1
2	U41693	Lock Nut	1
3	U41694	* Body	1
4	U40919	Spring Retainer	1
5	U40916	Gasket	1
6	U40917	Spring	1
7	U40918	Guide Seat	1
8	U41695	Inlet Adapter	1
		* Not Sold Separately	
	U40029	Water Relief Valve - 700 PSI	1
1	U41692	* Adjusting Screw Assembly	1
2	U41693	Lock Nut	1
3	U41694	* Body	1
4	U40919	Spring Retainer	1
5	U40916	Gasket	1
6	U40917	Extra Duty 700 lbs. Spring	1
7	U40918	Guise Seat-Stainless Steel	1
8	U41695	Inlet Adapter	1

WATER FILL GAUGE 26"/ WATER FILL GAUGE 45"

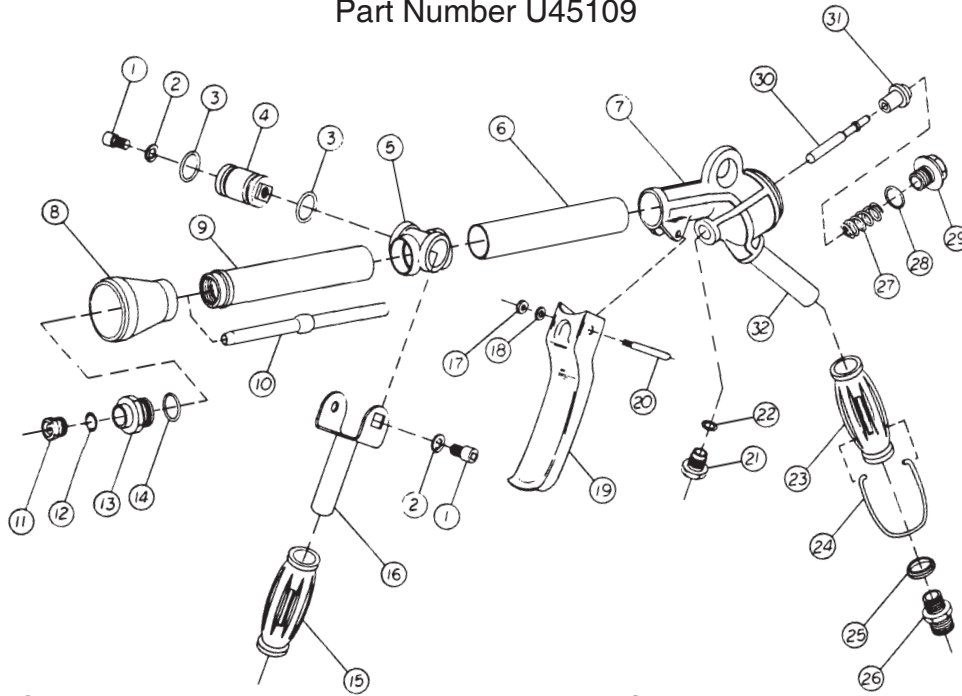
26" For Models 2100, 810, 800, 815, 1200 / 45" For Models 400, 810E



ITEM #	ASPC PART #	DESCRIPTION	QUANTITY NEEDED
Water Relief Valves			
	U40029A	Water Relief Valve - 300 PSI	1
1	U41692	* Adjusting Screw Assembly	1
2	U41693	Lock Nut	1
3	U41694	* Body	1
4	U40919	Spring Retainer	1
5	U40916	Gasket	1
6	U40917	Spring	1
7	U40918	Guide Seat	1
8	U41695	Inlet Adapter	1
		* Not Sold Separately	
	U40029	Water Relief Valve - 700 PSI	1
1	U41692	* Adjusting Screw Assembly	1
2	U41693	Lock Nut	1
3	U41694	* Body	1
4	U40919	Spring Retainer	1
5	U40916	Gasket	1
6	U40917	Extra Duty 700 lbs. Spring	1
7	U40918	Guise Seat-Stainless Steel	1
8	U41695	Inlet Adapter	1

WATER GUN ASSEMBLY

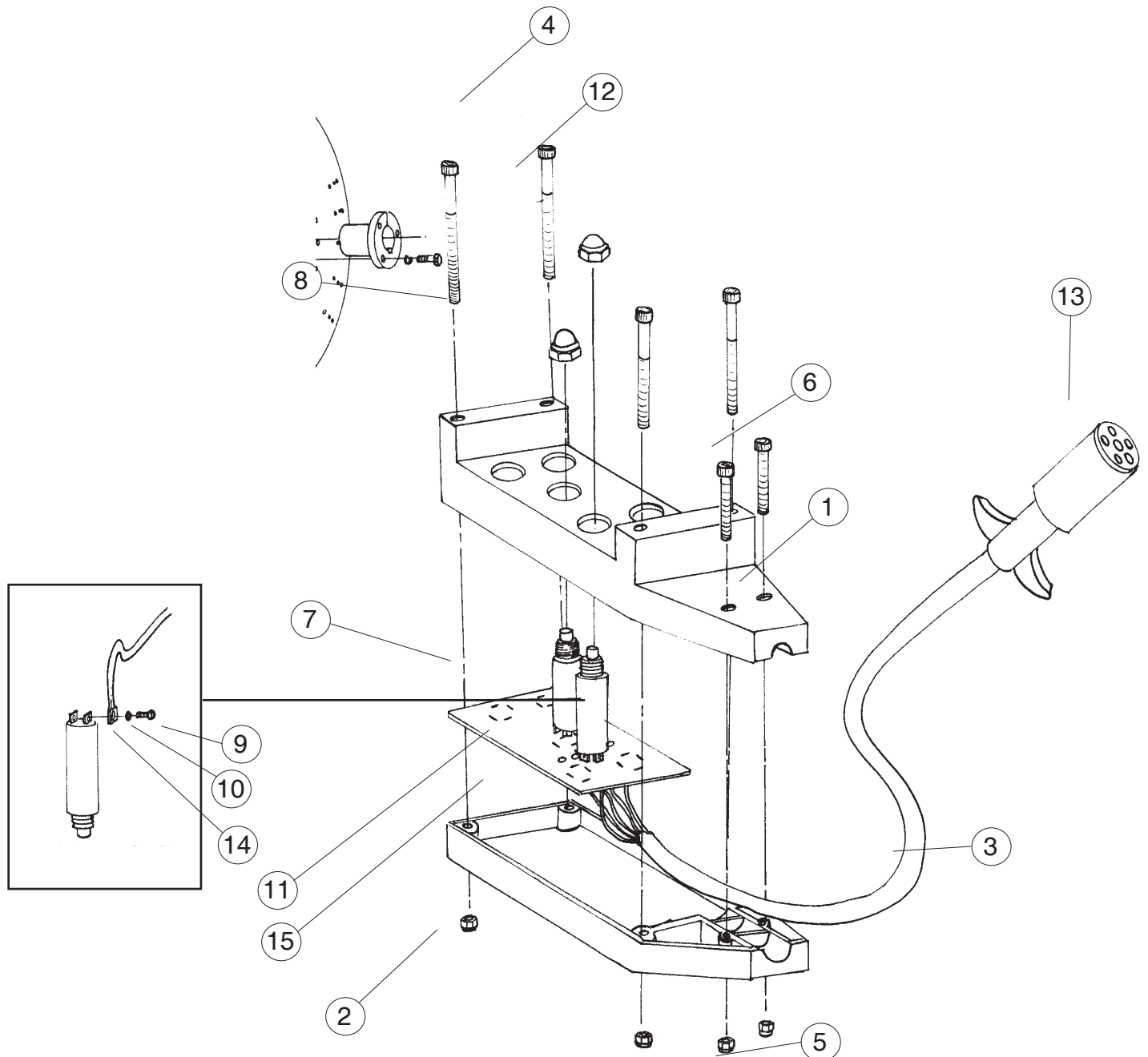
Part Number U45109



ITEM #	ASPC PART #	DESCRIPTION	QUANTITY NEEDED
Water Gun Assembly			
	U45109	Wash Down Gun (Complete)	
1	U45144	Bolt	2
2	U45145	Lockwasher	2
3	N/A	* O-Ring	2
4	U45147	Regulator	1
5	U45148	Regulator Body (Must buy Complete Gun)	1
6	U45149	Rear Barrel (Must buy Complete Gun)	1
7	U45150	Body (Must buy Complete Gun)	1
8	U45151	Shroud	1
9	U45152	Front Barrel (Must buy Complete Gun)	1
10	U45153	Inner Barrel (Must buy Complete Gun)	1
11	U45154-3.5	Nozzle (3.5mm 12 GPM @ 800 PSI)	1
	U45154-4.5	Nozzle (4.5mm 18 GPM @ 800 PSI)	1
12	U71081	O-Ring	1
13	U45156	Nozzle Retainer	1
14	N/A	* O-Ring	1
15	U45158	Front Grip	1
16	U45159	Bracket	1
17	U45160	Nut	1
18	U45161	Lockwasher	1
19	U45163	Trigger	1
20	U45162	Pin	1
21	U45164	Guide	1
22	N/A	* O-Ring	1
23	U45166	Hand Grip	1
24	U45167	Locking Clip	1
25	U45168	Washer	1
26	U45169	Inlet Port	1
27	U45170	Spring	1
28	N/A	* O-Ring	1
29	U45172	Plug	1
30	U45173	Plunger	1
31	U45174	Poppet	1
32	U45175	Tube	1
33	U45177	Seat (NOT Shown)	1
34	U45176	Outlet Port (NOT Shown)	1
*	U45178	Seal Kit (Item #'s 3-12-14-22 & 28	

5 BUTTON PENDANT CONTROL W/4-WAY BOOM

Part Number U54219



PLEASE SEE NEXT PAGE FOR INDIVIDUAL PART NUMBERS

5 BUTTON PENDANT CONTROL W/4-WAY BOOM

ITEM #	ASPC PART #	DESCRIPTION	QUANTITY NEEDED
Pendant Controls			
	U54219	5 Button Complete W/4-Way Boom	
1	U43728	Case - Top (Yellow)	1
2	U43729	Case - Bottom (Yellow)	1
3	U43810	15' Cable Assembly	1
4	U53009	#10 - 24NC x 2 Socket Head Cap	4
5	U53008	#10 - 24NC Hexagon Locking Nut	6
6	U53010	#10 - 24NC x 1 Socket Head Cap	2
7	U43809	Switch with Lockwasher	4
11	U44868	Kill Switch w/Lockwasher	1
12	U44869	Switch Boot - Red	1
13	U41485	Male Plug (included in Item #3)	1
15	70-0401-000	Printed Switch Circuit Board	1
	U54219B	with 20' Cable Complete	
	U54219A	with 30' Cable Complete	
	U54219C	Box Only w/o Cable	

NOTE: With Vactor® manufactured pendant controls, the cord is wired directly to all switches, therefore, part numbers listed under Vactor® Manufactured should be used when ordering parts for this type of pendant control.

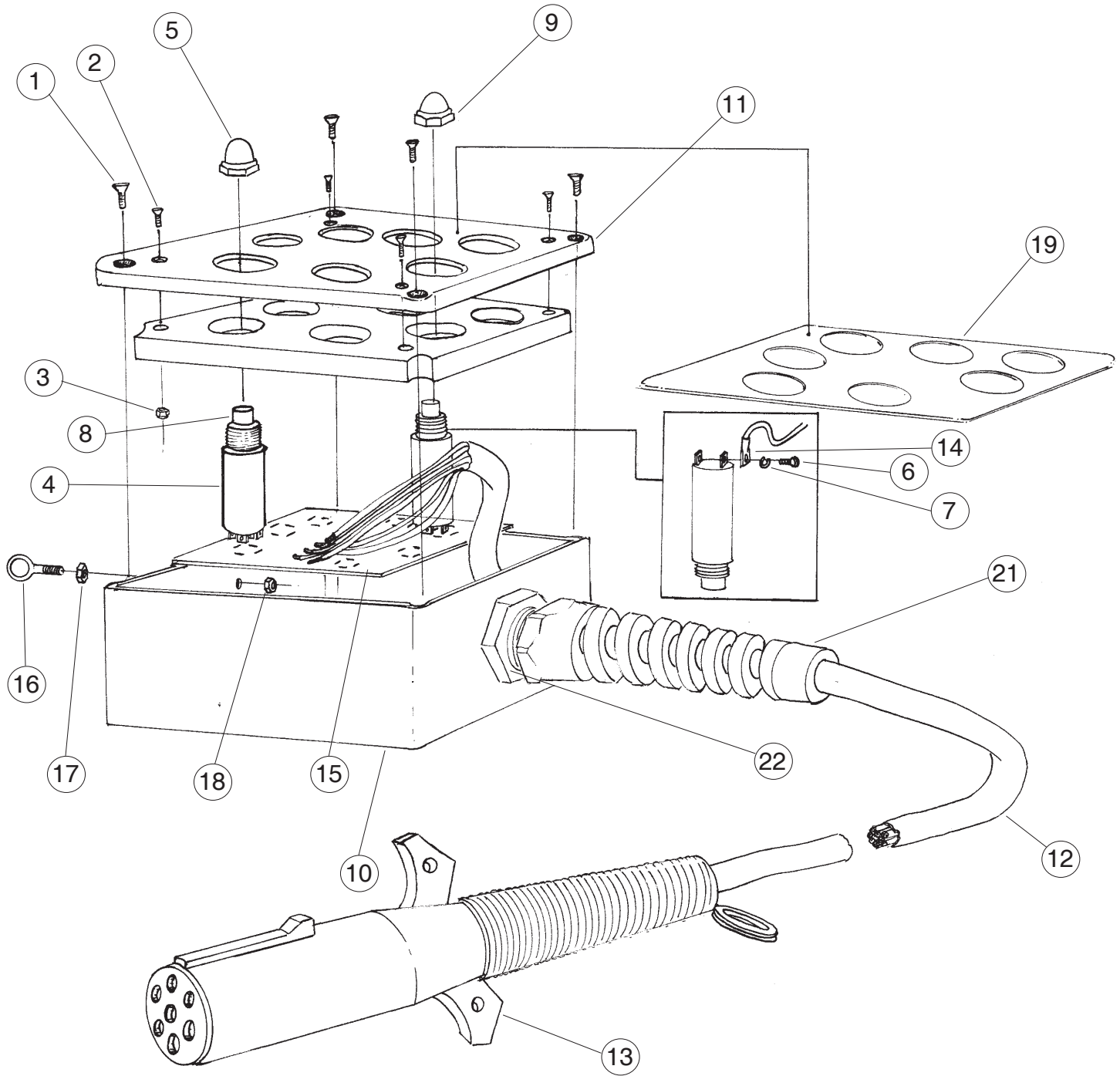
With ASPC® manufactured pendant controls, all switches are soldered directly to the top of the circuit board and the cord wires are soldered to the bottom of the circuit board, which insures contact. Part numbers listed under ASPC® manufactured should be used when ordering parts for pendant controls with a circuit board inside the pendant box.

NOTE: 5 button pendant control assemblies can be ordered with longer connect cords by using the appropriate part numbers listed below:

U54219 - 15' long
U54219A - 30' long
U54219B - 20' long
U54219BC- No Cable

7 BUTTON PENDANT CONTROL

Part Number U44861



PLEASE SEE NEXT PAGE FOR INDIVIDUAL PART NUMBERS

7 BUTTON PENDANT CONTROL

ITEM #	ASPC PART #	DESCRIPTION	QUANTITY NEEDED
Pendant Controls			
	U44861	7 Button Complete	
1	U53009	#10-24NC x 3/8 PH Machine Screw	4
2	U53010	#10-24NC x Socket Head Capscrew	4
4	U43809	Switch and Lockwasher	6
5	U43808	Switch Boot	6
8	U43809	Kill Switch with Lockwasher	1
9	U44869	Red Switch Boot	1
10	U44918	Rear Case	1
11	U44919	Front Case	1
12	U44920A	30' Cable Assembly	1
13	U44859	Male Plug with Spring	1
15	70-0401-007	Printed Switch Circuit Board	1
16	10-9632-125	Eyebolt 6-32	1
17	10-0632-218	NY Lock Nut 6-32	1
18	U16359V	Hex Nut 6-32	1
19	55-4486-100	Decal Front Cover	1
20	16-4486-150	Cover Back-Up Plate	1
21	U44860-1	Stain Relief	1
22	U44860-2	Lock Nut	1
	U44861A	Box Only w/o Cable	
	U44861B	with 10' Cable Complete	
	U44861C	with 15' Cable Complete	

NOTE: With Vactor® manufactured pendant controls, the cord is wired directly to all switches, therefore, part numbers listed under Vactor® Manufactured should be used when ordering parts for this type of pendant control.

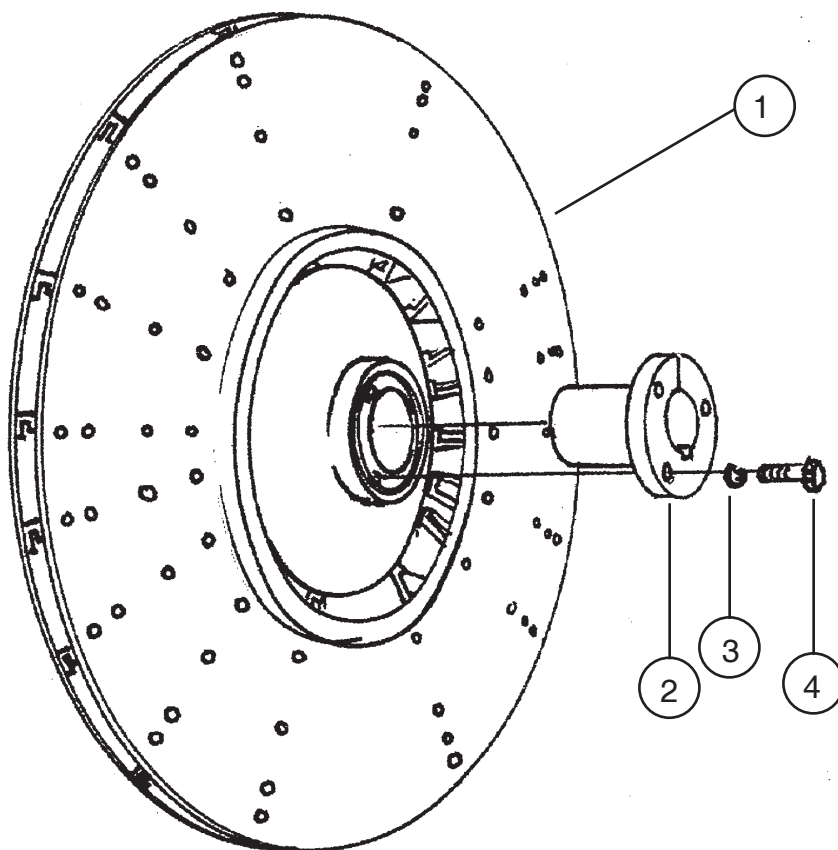
With ASPC® manufactured pendant controls, all switches are soldered directly to the top of the circuit board and the cord wires are soldered to the bottom of the circuit board, which insures contact. Part numbers listed under ASPC® manufactured should be used when ordering parts for pendant controls with a circuit board inside the pendant box.

NOTE: 7 button pendant control assemblies can be ordered with longer connect cords by using the appropriate part numbers listed below:

U44861B - 10' long
 U44861C - 15' long
 U44861 - 30' long
 U44861A - No Cable

ASPC VACUUM FANS

Part Number U25975



ASPC's own 38" diameter fan assembly are constructed to meet exact dimensional specifications and each part in ASPC's fan assembly is coated with a protectant to ensure long life.

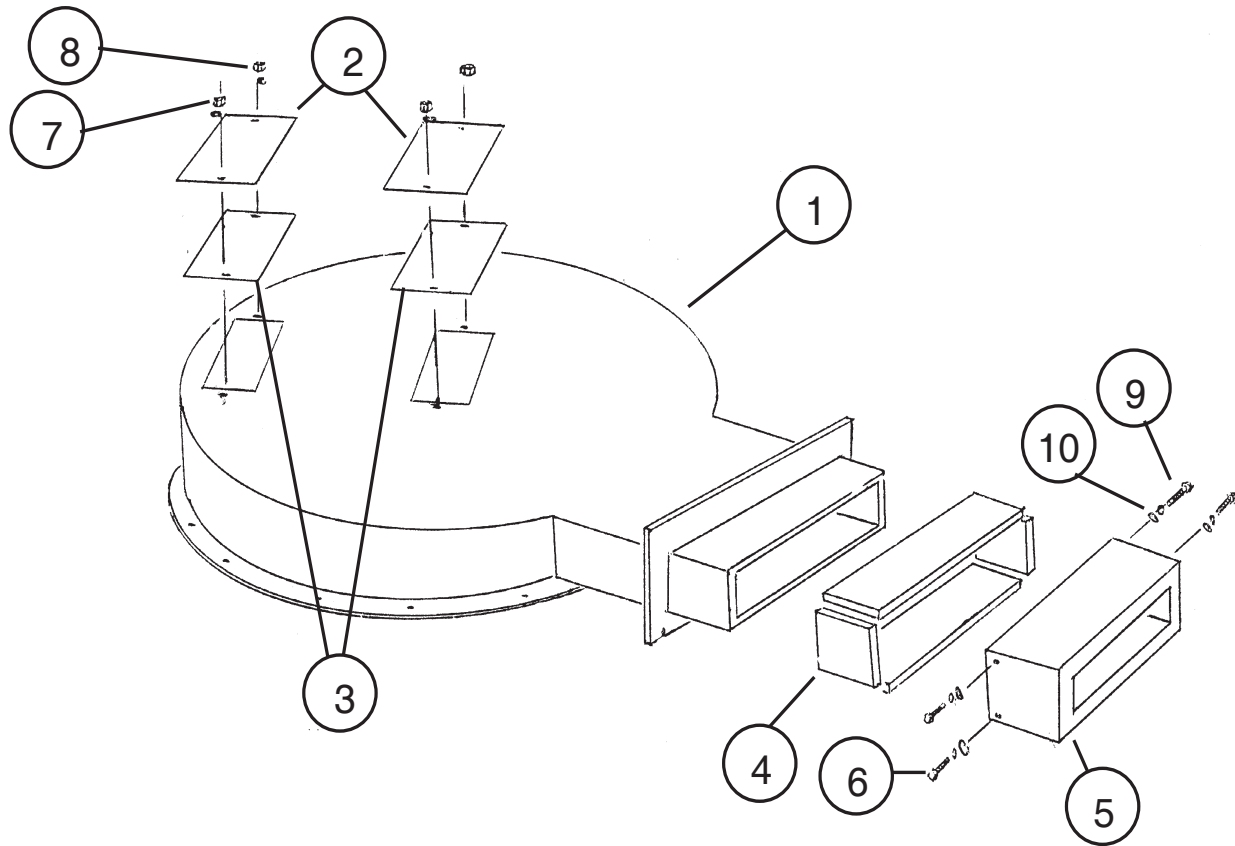
The center steel hub is electroless nickel plated to 70 R.C. which prevents rust and corrosion and preserves the base steel against abrasive elements. During the ASPC assembly process, the fan blades are centrifugally cast, not just die cast. Each fan blade has a tensile strength of 35,900 lbs. (compared to 27,900 lbs.) and a yield strength of 29,400 lbs. (compared to 27,900 lbs.) To further safeguard against abrasion damage, a hard chrome coating is applied to each blade face. Also, the front and rear cover of each fan is anodized; which protects aluminum parts from corrosion and oxidation.

After assembled, each ASPC fan is centrifugally spin balanced to ensure proper weight transfer providing long life for both the fan and transmission. Through these processes, ASPC has created a high quality, long lasting fan which sets the standard in the industry.

ITEM #	ASPC PART #	DESCRIPTION	QUANTITY NEEDED
ASPC 38" Vacuum Fans			
	U25975	Complete Assembly	
2	U16056**	Hub, Taper Lock	1
3	U16366B	3/8" Lock Washer	3
4	U42706**	Hex Headcap Screw 3/8"-16x1.50	3

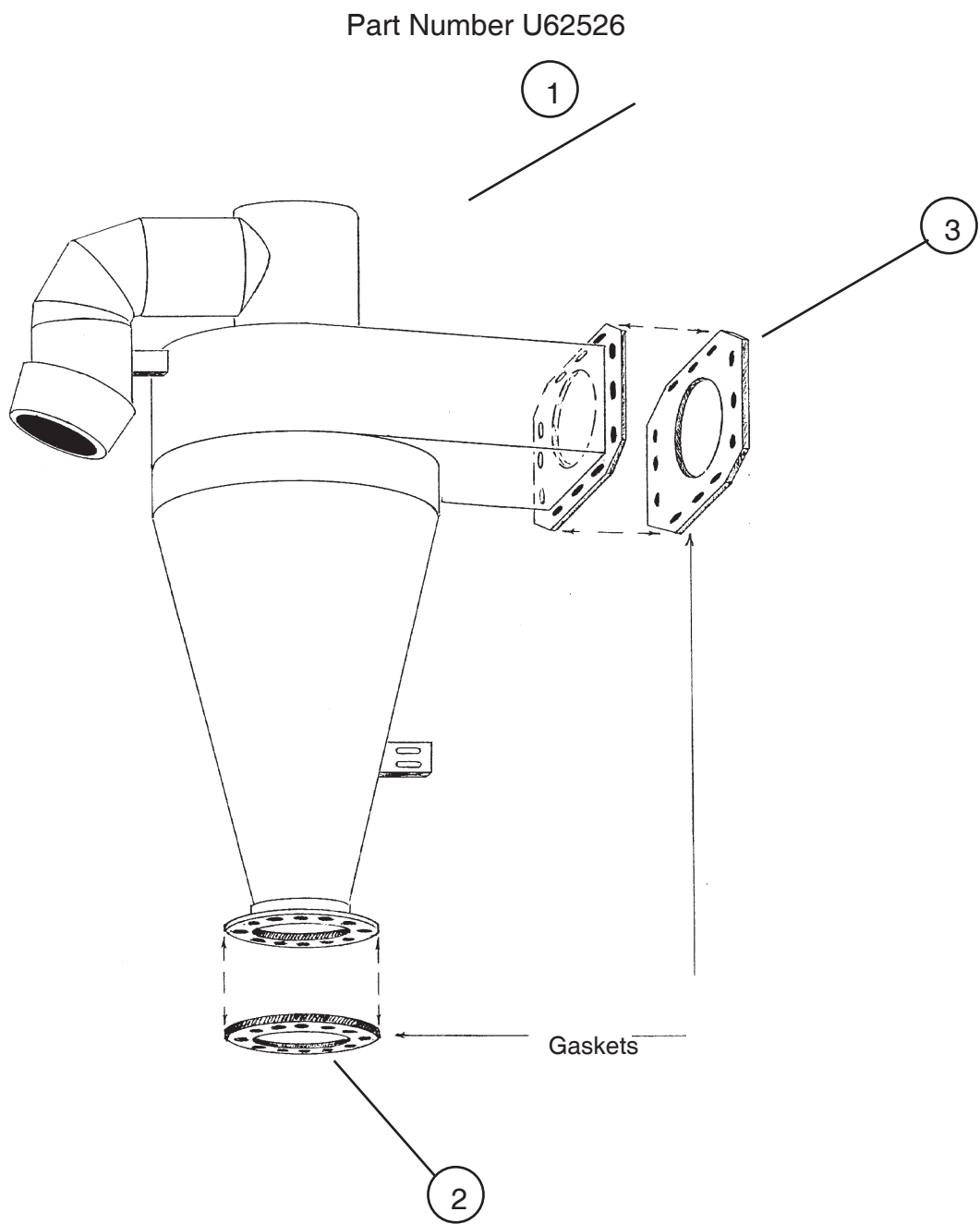
***** Part Number 16848 has been superseded by Part Number 25975 *****

AIR CHAMBER ASSEMBLIES FOR VACTOR MODELS 800, 810 & 1200



ITEM #	ASPC PART #	DESCRIPTION	QUANTITY NEEDED
Air Chamber Assemblies			
1*	U36733	810 Air Chamber Weldment Assy	
2*	U19447	Door Cover Air Inlet	2
3*	U37553	Gasket Cover	2
4	U31190	Sponge Seal Assembly	1
5	U29812**	Transition Air Pipe Weldment	1
6	U16332E	Capscrew	4
7*	U16366A	Lock Washer	4
8*	U16359B	Hex Nut	4
9	U16364	1/4" Flat Washer	4
10	U16366	Lock Washer	4
* Parts included in Item #1			
1*	U29795	800 & 1200 Air Chamber Weldment	
2*	U19447	Door Cover Air Inlet	2
3*	U37553	Gasket Cover	2
4	U31190	Sponge Seal Assembly	1
5	U29812**	Transition Air Pipe Weldment	1
6	U16332E	Capscrew	4
7*	U16366A	Lock Washer	4
8*	U16359B	Hex Nut	4
9	U16364	1/4" Flat Washer	4
10	U16366	Lock Washer	4
* Parts included in Item #1			

CYCLONE WELDMENTS

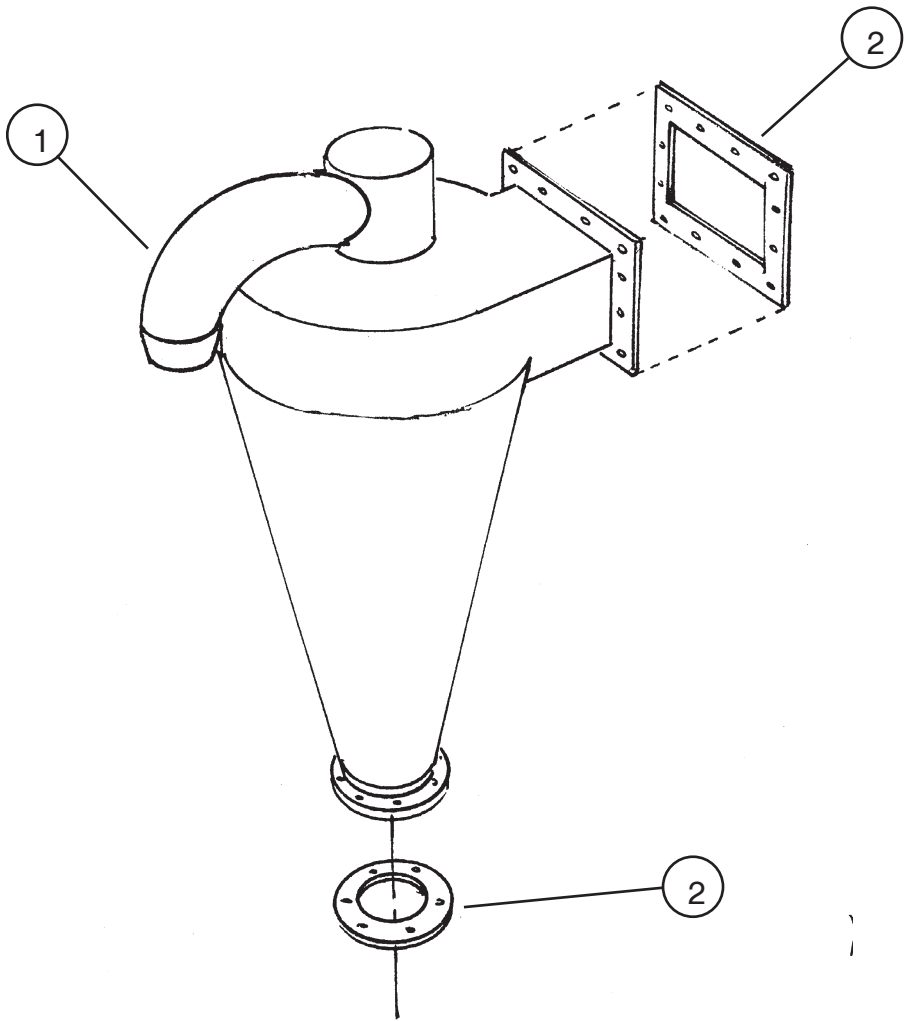


Cyclone U62526 is installed on Vactor® Model 2100 Series Machines (with a fan)

ITEM #	ASPC PART #	DESCRIPTION	QUANTITY NEEDED
Cyclone Weldments			
1	U62526	2100 Series Fan Machine	
2	U26861	Gasket	
3		Use Silicone	

CYCLONE WELDMENTS

Part Number U63169

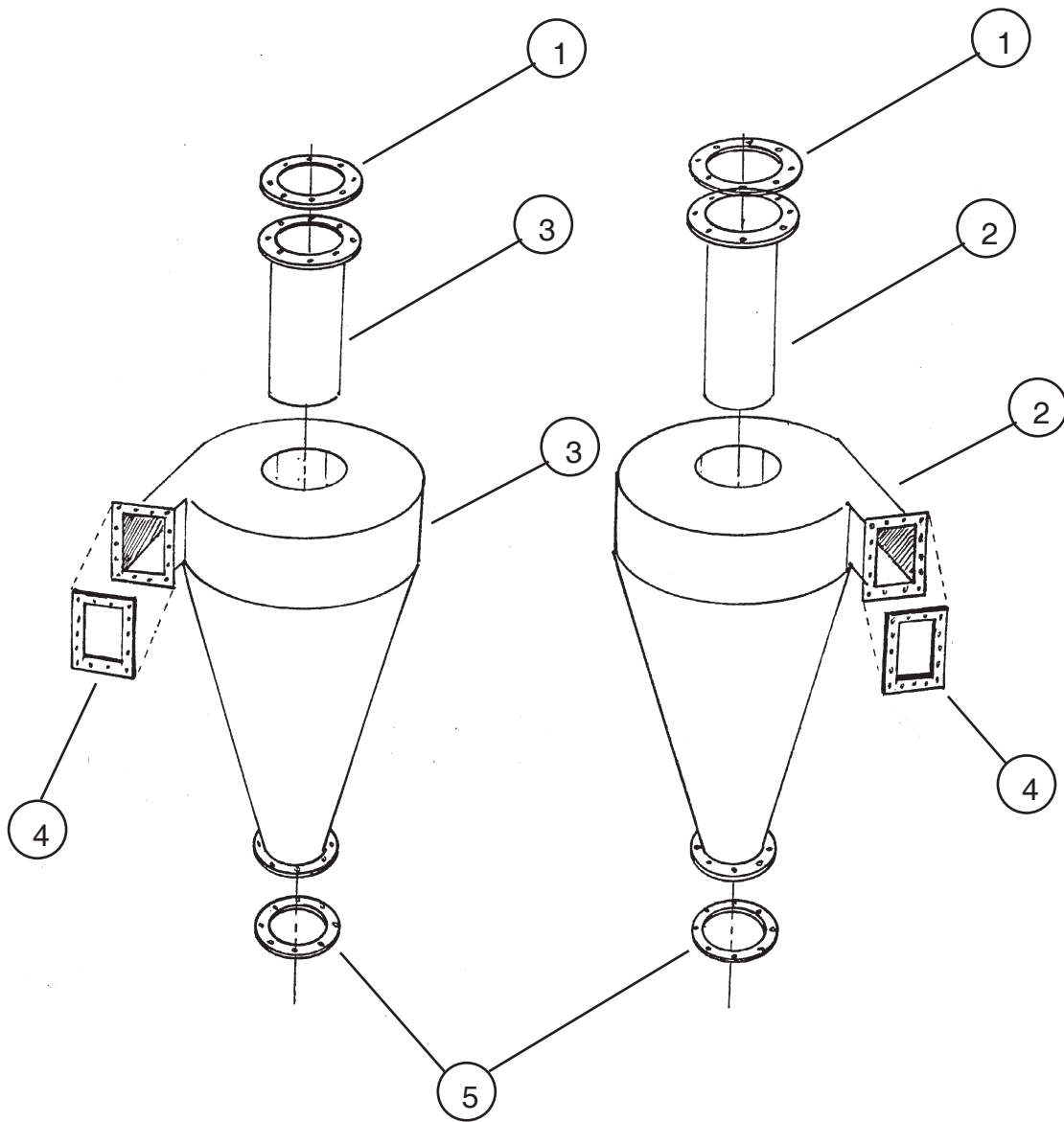


Cyclone U63169 goes on Vactor® 2100 Series Machines with P.D. Blowers

ITEM #	ASPC PART #	DESCRIPTION	QUANTITY NEEDED
1	U63169	2100 Series P.D. Blower Machine	
2		Use Silicone	

CYCLONE WELDMENTS

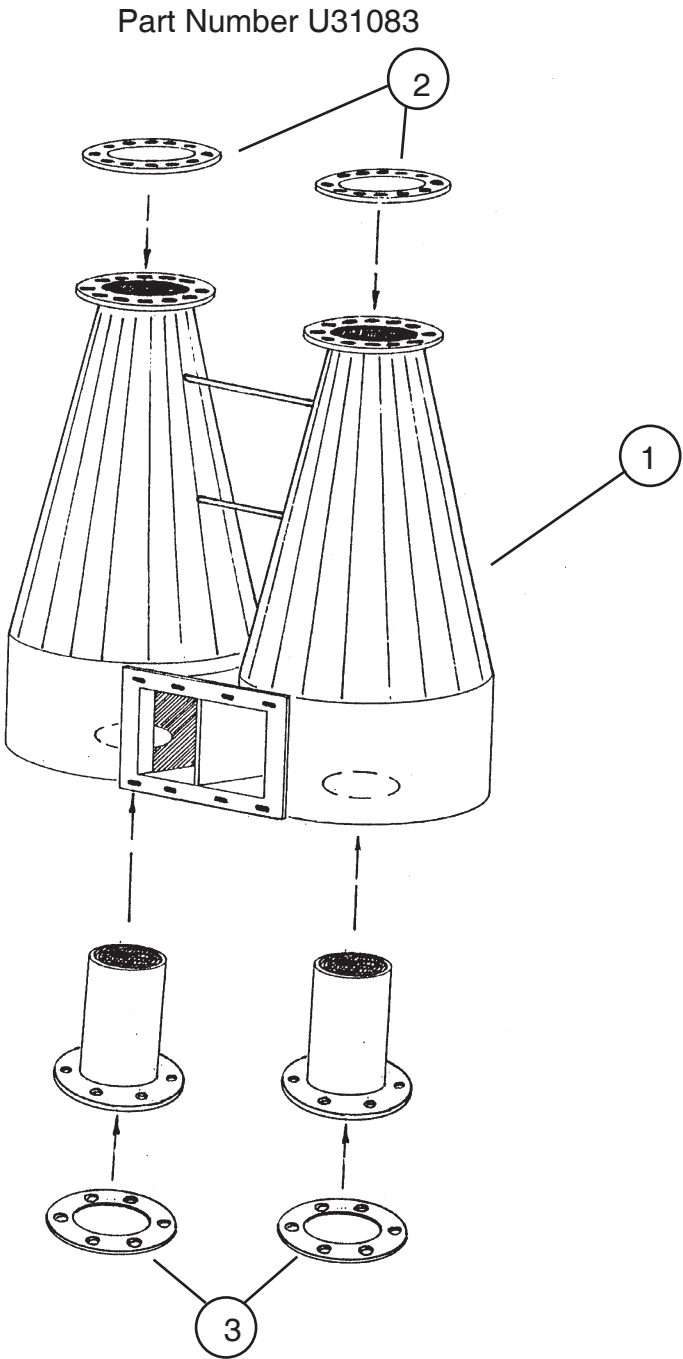
FOR MODEL #2045



Vactor® 2045 Cyclone Assemblies Manufactured by ASPC

ITEM #	ASPC PART #	DESCRIPTION	QUANTITY NEEDED
2045 Cyclone Assy from ASPC			
1	U38278	Gasket	2
2	U39862	Right Cyclone Assy	1
3	U39863	Left Cyclone Assy	1
4	U39508	Adapter Gasket	2
5	U26861	6" Gasket	2

CYCLONE WELDMENTS

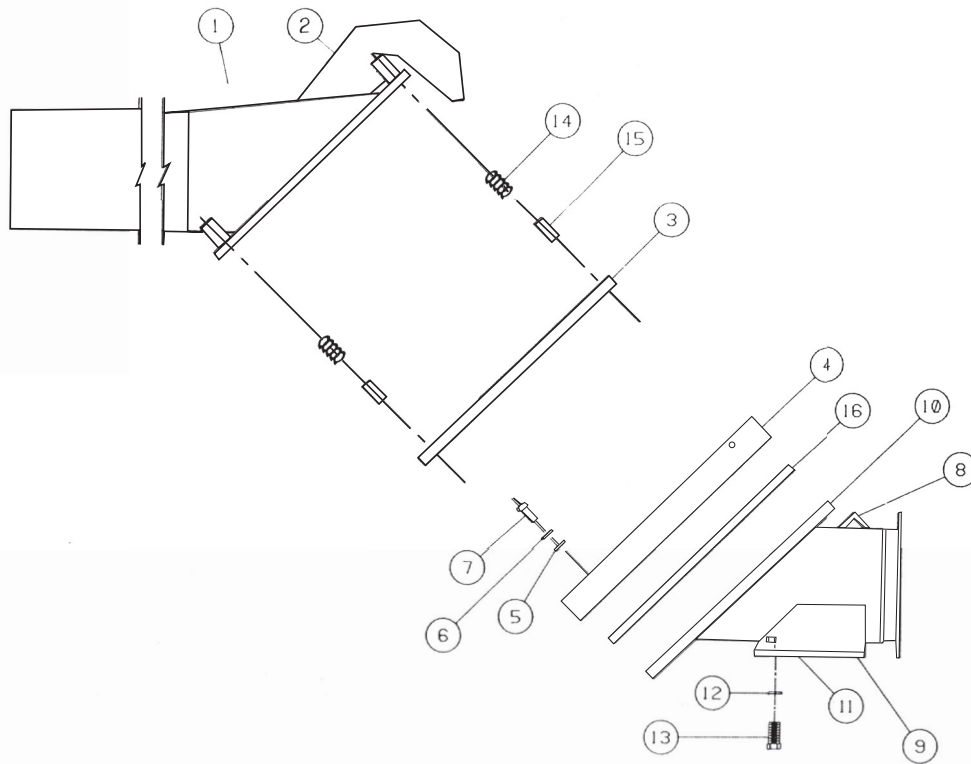


Cyclone U31083 is used on Vactor® 800 & 1200 Models

ITEM #	ASPC PART #	DESCRIPTION	QUANTITY NEEDED
800 & 1200 Cyclone Assy			
1	U31083	Cyclone	
2	U26861	6" Gasket	2
3	U38278	Gasket	2

VACUUM BOX INLET ASSEMBLY

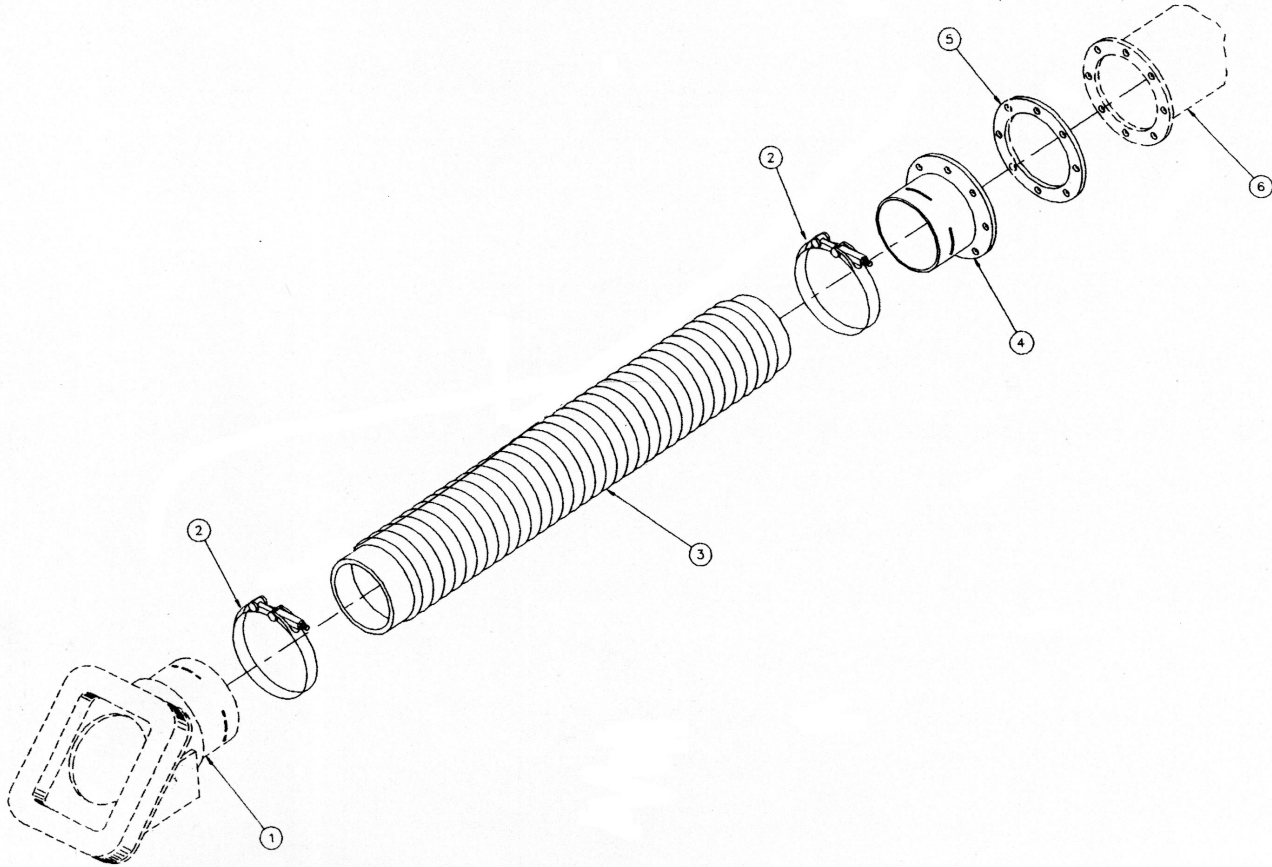
(VACUUM BOX DEBRIS INLET ASSEMBLY)



ITEM #	ASPC PART #	DESCRIPTION	QUANTITY NEEDED
Vacuum Box Debris Inlet Assembly			
For Vactor 800-810 & 1200			
	U59449	Complete Assembly	
1	U29083**	Inlet Weldment (Standard)	1
2	U29087	Centering Plate	1
3	U25656	Sponge Rubber Seals	1
4	U23604	Seal Frame	1
5	U16364	1/4 Flat Washer	4
6	U16366	1/4 Lockwasher	4
7	U16332E	1/4 - 20NC X 1 1/4 Capscrew	4
8	U27772	Guide Angle	1
9	U34953	Anchor Angle - Inlet	2
10	U34961**	Inlet Weldment	1
11	U16360E	3/4 X 10NC Hexagon Nut	4
12	U16367E	3/4 Lockwasher	4
13	U16370B	3/4 - 10NC X 1 3/4 Capscrew	4
14	U16437-D	Spring	4
15	U23771	Seal Rod	4
16	U54046	Rubber Gasket	1

INLET HOSE INSTALLATION

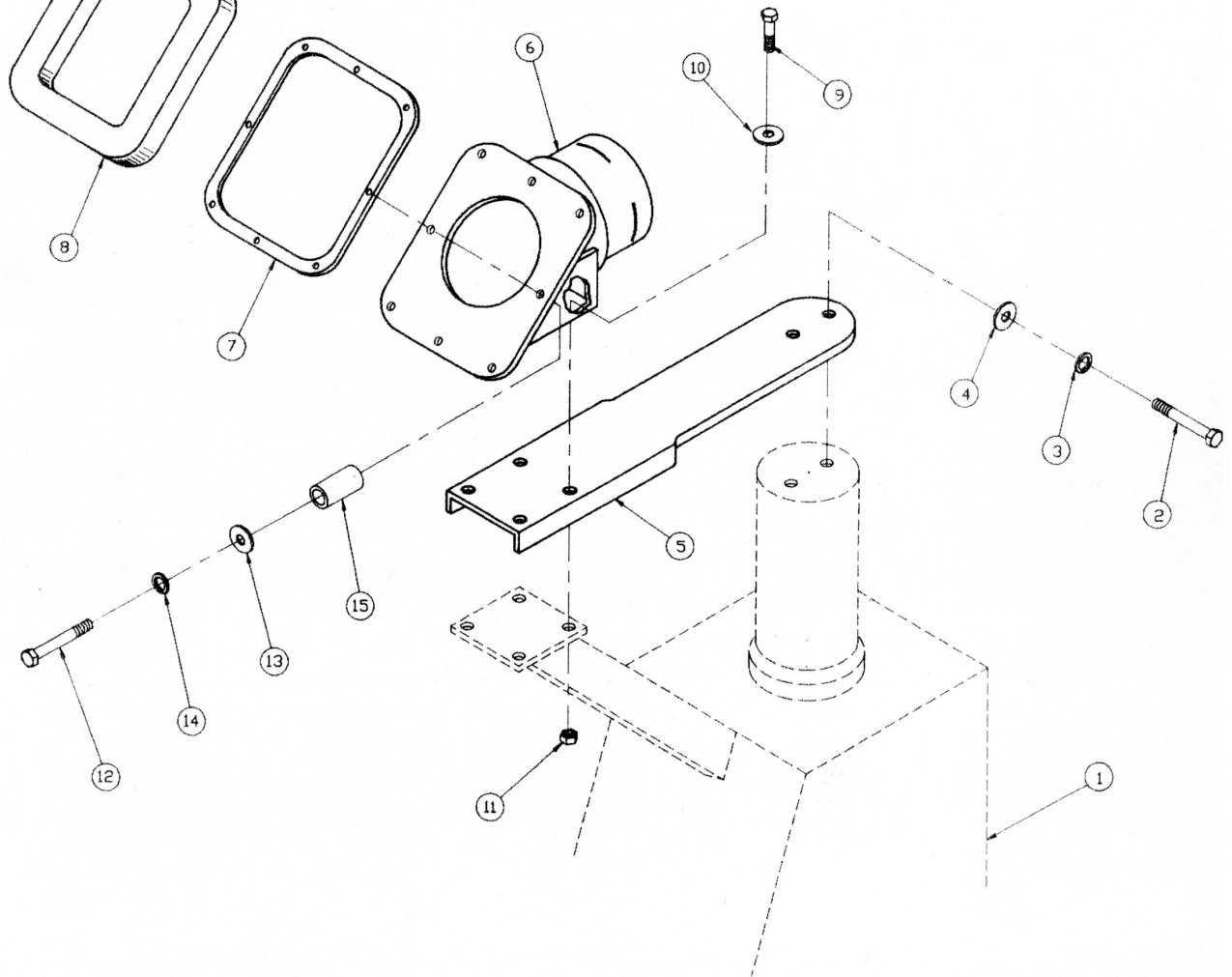
For Model 2100



ITEM #	ASPC PART #	DESCRIPTION	QUANTITY NEEDED
Inlet Hose Installation			
	U62384	2100 Complete Assembly	
1*	U62222**	Inlet Weldment	1
2	U43388	Clamp	2
3	U45804	Kanaflex 8" x 62" long	1
4	U58795	Hose End Weldment	1
5	U16585	8" Rubber Gasket	1
6		Not Included - Steel Tube	
		* Part NOT included in Assy	

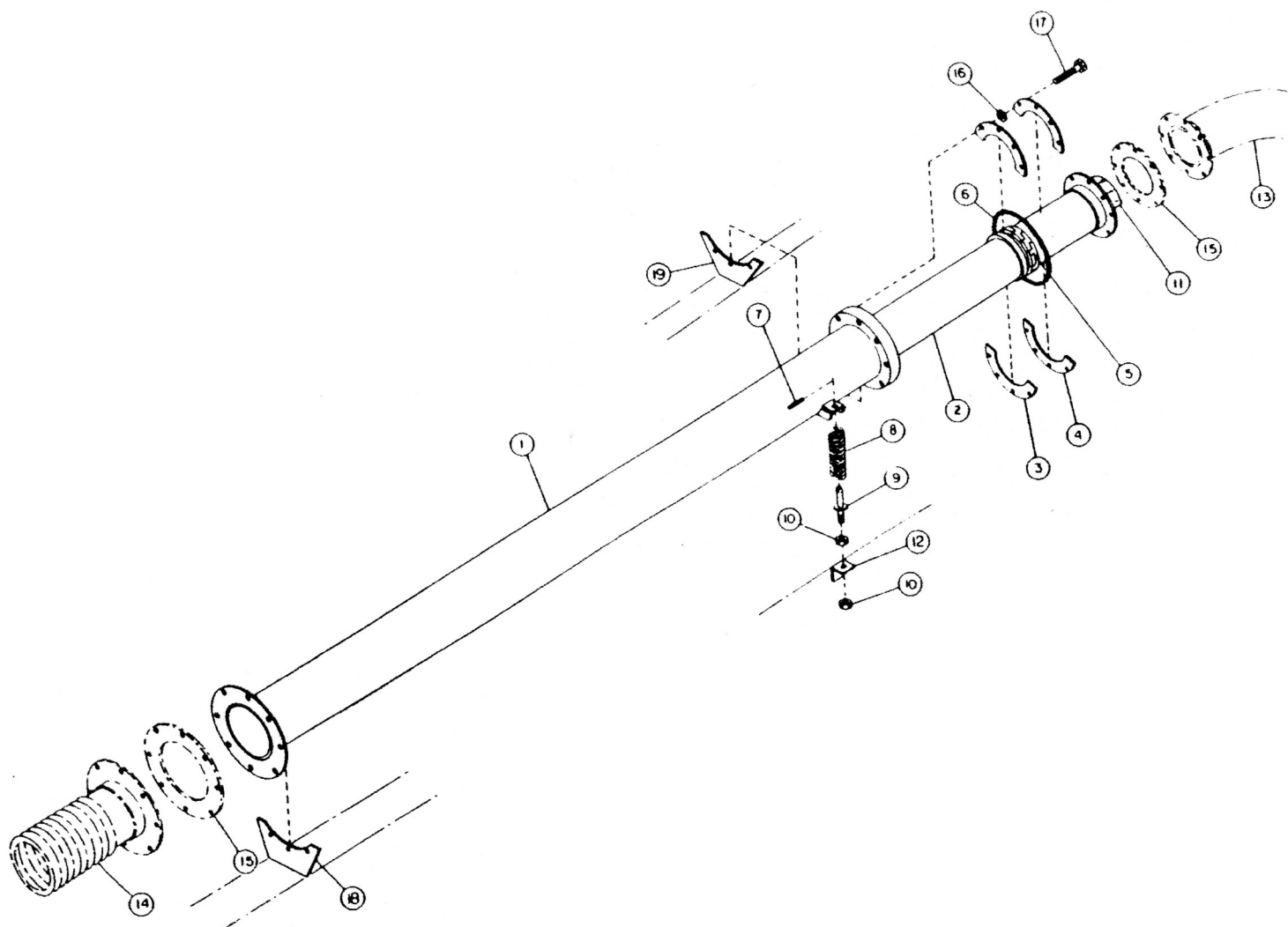
INLET HEAD INSTALLATION

#462387



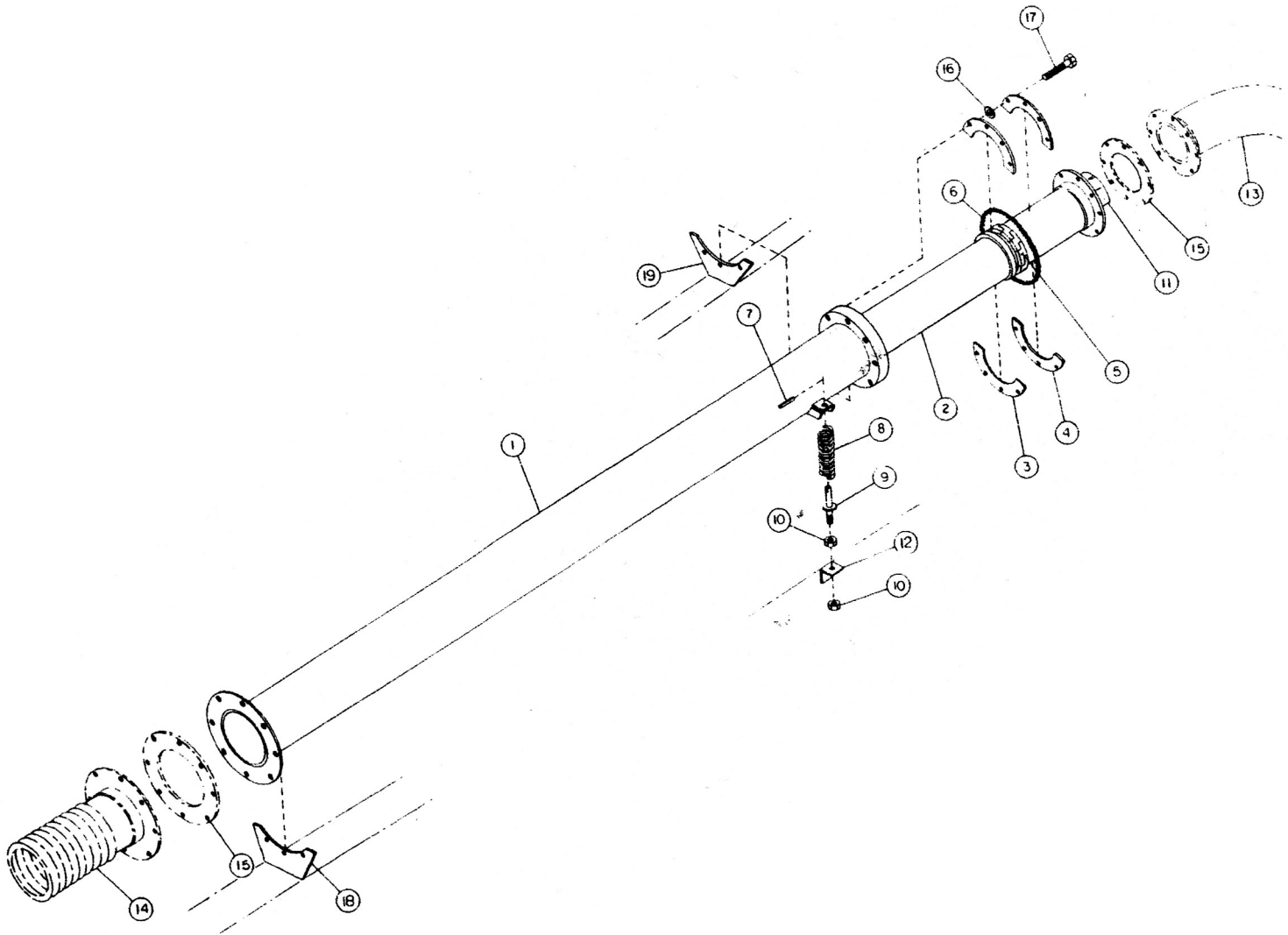
ITEM #	ASPC PART #	DESCRIPTION	QUANTITY NEEDED
Inlet Head Installation			
	U62387	Complete Assembly	
1*	N/A	Boom Pole Weldment	1
2	U43048	Bolt 7/8"-9NC x 1 3/4" long	2
3	U16367F	Lockwasher 7/8"	2
4	U16434F	Flatwasher 7/8"	2
5	U62065	Tie Plate	1
6	U62222**	Inlet Weldment	1
7	U62232	Seal Holder Frame	1
8	U62987**	Rubber Seal	1
9	U42392	Bolt 1/2"-13NC. X 1 1/4" long	4
10	U16365C	Flatwasher 1/2"	4
11	U20121E	Fiber-Lok Nut 1/2"-13NC	4
12	U16339C	Bolt 5/16"-18NC. X 1 1/4" long	8
13	U16365A	Flatwasher 5/16"	8
14	U16367A	Lockwasher 5/16"	8
15	U62392	Collar	8

4 FT. TELESCOPING TUBE INSTALLATION



ITEM #	ASPC PART #	DESCRIPTION	QUANTITY NEEDED
4 Foot Telescopic Tube Installation			
1	U60955	Outer Tube Weldment	1
2	U60958	Inner Tube Weldment	1
3	U59825**	Retaining Ring	1
4	U59827	Seal Retainer	1
5	U59826	Air Seal Segment	10
6	U44581	Spring	1
7	U16420-L	Roll Pin 1/8" Dia. X 3/4" long	2
8	U44645	Spring	2
9	U59832	Spring Keeper Rod Weldment	2
10	U16359D	Hex Nut 1/2"-13NC.	4
11	U58860**	Wear Plate	1
12	U59828	Mounting Angle	2
16	U40683	Flatwasher S.S. 3/8"	8
17	U44580	Hex Skt. Shoulder Screw	8
18	U58924	Rear Support Plate	1
19	U58925**	Front Support Plate	1

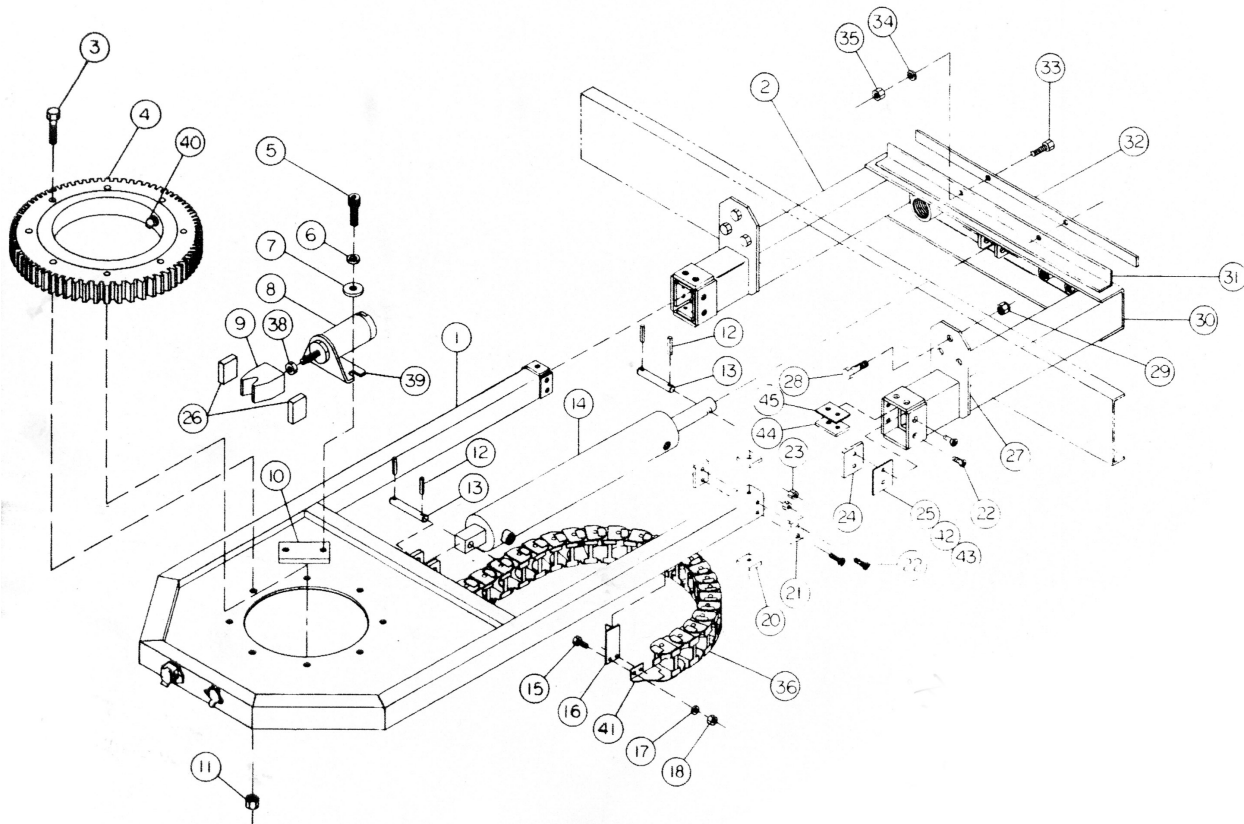
8 FT. TELESCOPING TUBE INSTALLATION



ITEM #	ASPC PART #	DESCRIPTION	QUANTITY NEEDED
8 Foot Telescopic Tube Installation			
1	U62033	Outer Tube Weldment	1
2	U62031**	Inner Tube Weldment	1
3	U59825**	Retaining Ring-2 per boom sm. Hole	2
4	U59827	Seal Retainer-2 per boom lg Hole	2
5	U59826	Air Seal Segment	10
6	U44581	Spring	1
7	U16420-L	Roll Pin 1/8" DIA. 3/4" long	2
8	U44645	Spring	2
9	U59832	Spring Keeper Rod Weldment	2
10	U16359D	Hex Nut 1/2"-13 NC.	4
11	U58860**	Wear Plate	1
12	U59828	Mounting Angle	2
16	U40683	Flatwasher S.S. 3/8"	8
17	U44580	Hex Skt Shoulder Screw 1/2"	8
18	U58924	Rear Support Plate	1
19	U58925**	Front Support Plate	1

ROTATING/TELESCOPIC HOSE REEL

Installation A



ITEM #	ASPC PART #	DESCRIPTION	QUANTITY NEEDED
Rotating/Telescopic Hose Reel Frame Installation A			
1	U60932	Telescopic Frame Weldment	1
2	U60891	Outer Telescopic Tube Weldment	2
3	U44510	Capscrew 1/2" - 13NC. X 3" long	8
4	U45548H	Rotating Reel BEARING (See Note Below)	1
5	U44412	SOC. HD. Capscrew 5/16"-18NC	2
6	U16366A	Lockwasher 5/16" Med. Spring	2
7	U16364A	Flatwasher 5/16" SEA Zinc	2
8	U45551	Air Chamber	1
9	U61297	Stop Tooth Block	1
10	U61271	Spacer-Air Cylinder	1
11	U20121E	Fiber-Loc Nut 1/2"-13 NC.	8
12	U16420-D	Roll Pin 1/4" x 2" long	4
13	U35783	Cylinder Pin 1" x 4 1/2" long	2
14	U45064D	Hydraulic Cylinder 3" x 15" long	1
15	U16339	Hex HD. Capscrew 5/16"x-18NC.	8
16	U60869	Mounting Bracket Weld-Hose Track	2
17	U16364A	Lockwasher 5/16"	8
18	U16359B	Nut 5/16" - 18NC	8
20	U60900	Bronze Bearing	4
21	U60901	Bronze Bearing	4
22	U16341C	Flat HD. Capscrew 1/4"-20NC	28
23	U20121G	Fiber-Loc Nut 1/4"-20 NC	12
24	U61232	Bronze Bearing	4
25	U60894	Bearing Shim 14GA.	4

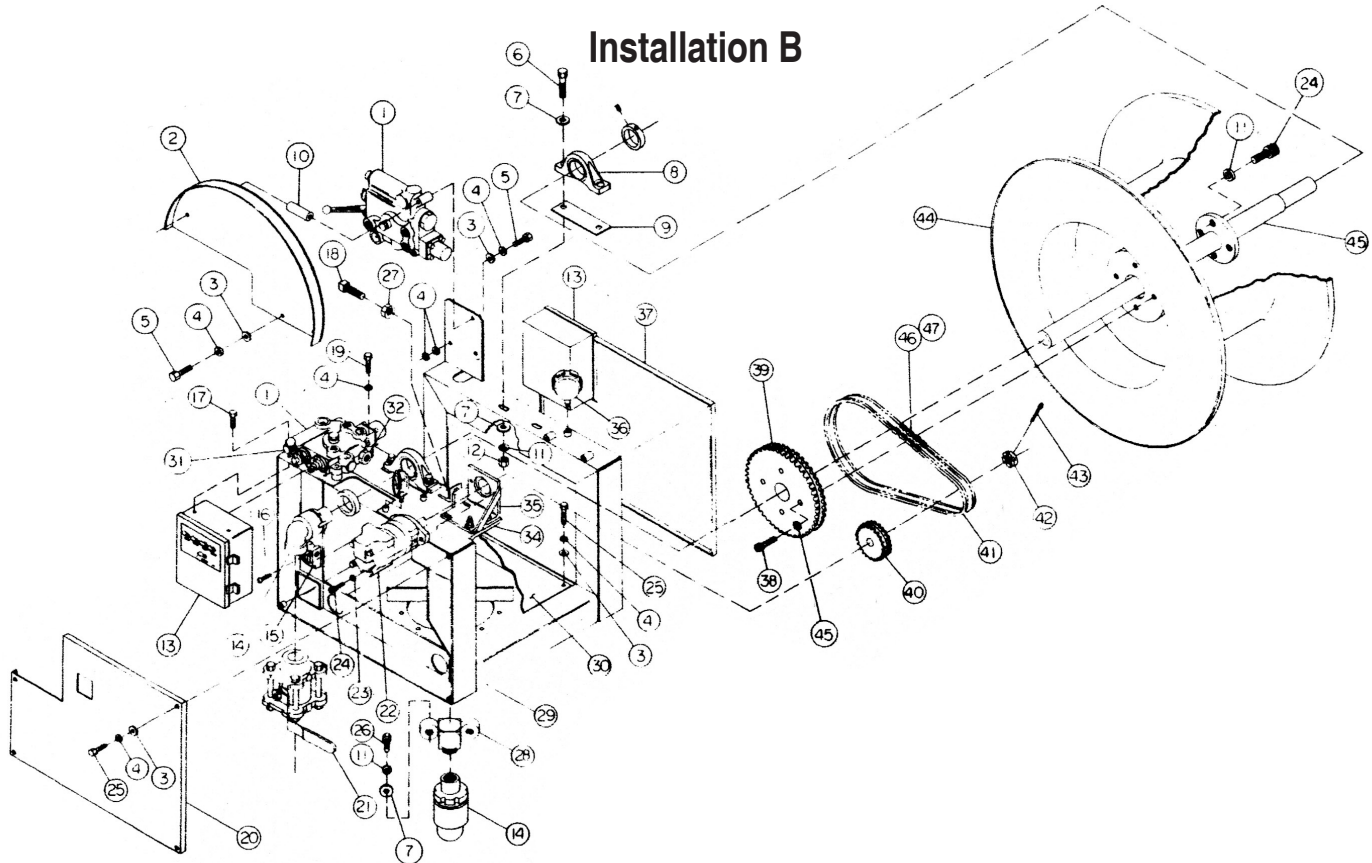
ROTATING/TELESCOPIC HOSE REEL

Installation A

ITEM #	ASPC PART #	DESCRIPTION	QUANTITY NEEDED
26	U61198**	Side Guide Block-Lock Tooth	2
27	U60904	Hanger	
28	U16357G	Hex HD. Capscrew 3/4"-20NF.	6
29	U20121H	Fiber-Loc Nut 3/4"-20NF.	6
30	U60890	Tie Channel Wedlment	1
31	U60903	Mounting Angle	1
32	U60902	Mounting Bar	1
33	U16348B	Capscrew 1/2" - 13NC. X 3" long	2
34	U16366C	Lockwasher 1/2" Med. Spring	2
35	U16359D	Hed HD. 1/2"-13NC.	2
36	U45787	Hose Carrier	1
38	U42385	Finish Hex Jam Nut 5/16"-24NF.	1
39	U45552**	Air Cylinder Bracket	1
40	U41759	Grease Zerk 1/4"x45	1
41	U45559	Hose Carrier Bracket	2
42	U60895	Bearing Shim 16GA.	4
43	U60896	Bearing Shim 18GA.	4
44	U61233	Bronze Bearing	4
45	U60897	Bearing Shim 14GA.	4
	U60898	Bearing Shim 16GA.	4
	U60899	Bearing Shim 18GA.	4

Note: The 810 & Early 2100 models
require drilling mounting holes larger to
accommodate the newer version rotating
reel bearing. The inner circle bolts are:
Inner Circle Bolts are 5/8" x 11
Outer Bolts are 9/16" x 12

ROTATING/TELESCOPIC HOSE REEL



ITEM #	ASPC PART #	DESCRIPTION	QUANTITY NEEDED
		Rotating/Telescopic Hose Reel Installation B	
1	U45556B	Cross Valve	1
2	U60928	Hose Reel Cover Weldment	1
3	U16365A	Flatwasher 5/16"	20
4	U16367A	Lockwasher 5/16"	20
5	U16339D	Hex HD. Capscrew 5/16"-18NC.	26
6	U16349F	Hex HD. Capscrew 1/2"-13NC.	4
7	U16365C	Flatwasher 1/2"	4
8	U16399-L	Pillow Block Bearing 1 3/4"	2
9	U52657A	Bearing Shim	2
10	U72728	Mounting Blank 5/16"-18NC.	2
11	U16367C	Lockwasher 1/2"	10
12	U16360C	Hex HD. Nut 1/2"-13NC.	4
14	U40052	1" x 90 Degree Swivel (See Below)	1
14	U43947	1 1/4" 90 Degree Swivel (See Below)	1
15	U45553	Air Valve	1
16	U16346R	Machine Screw RD. HD. 6-32	2
17	U16355B	Hex HD. Capscrew 5/16"-18NC.	3
18	U16353D	Sq. HD. Bolt 1/2"-11NC.	3
19	U16339F	Hex HD. Capscrew 1/4"-20NC	3
20	U60874**	Front Hose Reel Frame Cover	3
23	U31004	High Collar Lockwasher 1/2"	2
24	U42498	Soc. HD. Capscrew 1/2"-20 NC.	6
25	U16339A	Hex HD. Capscrew 5/16"-18NC.	10

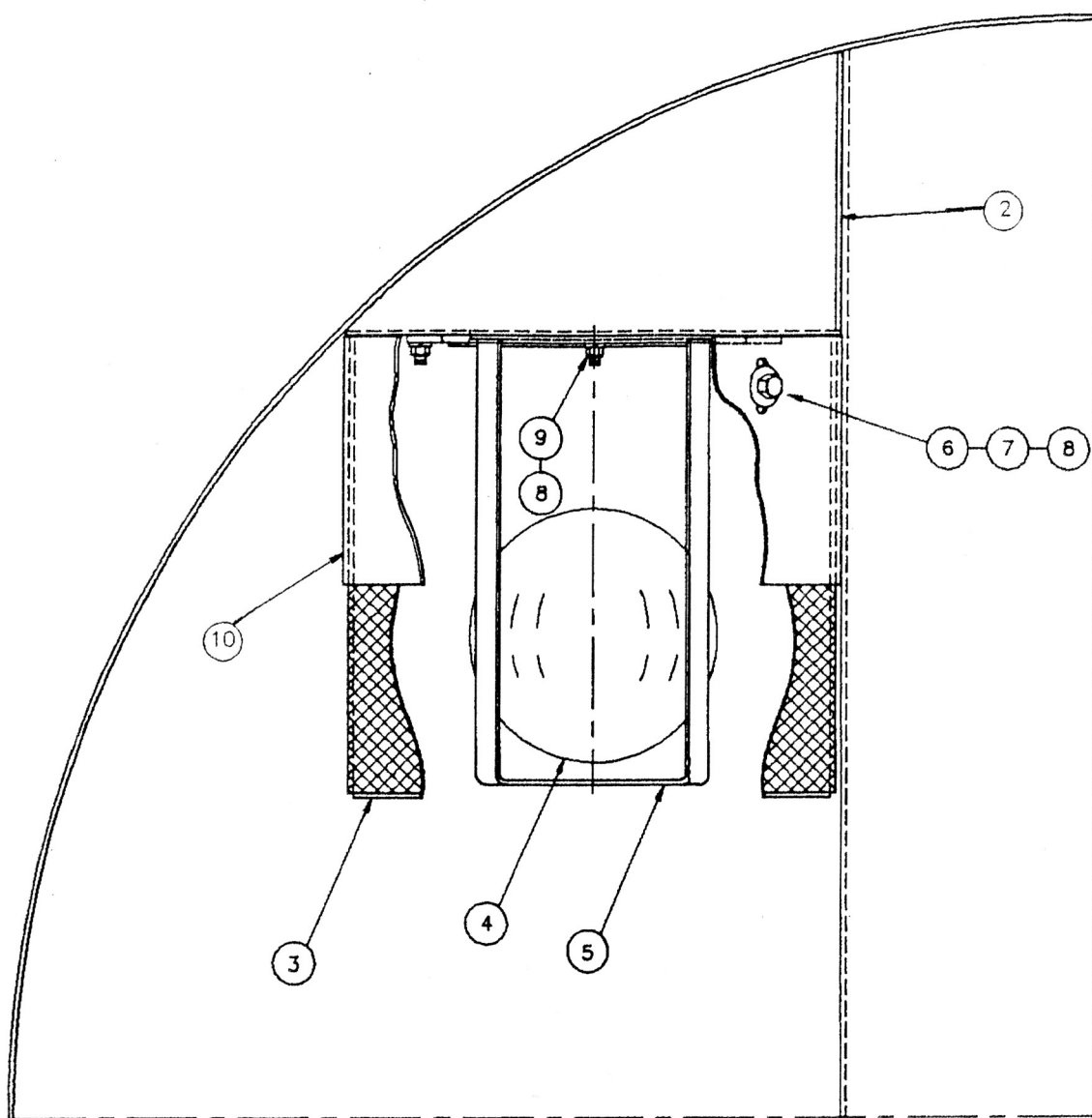
ROTATING/TELESCOPIC HOSE REEL

Installation B

ITEM #	ASPC PART #	DESCRIPTION	QUANTITY NEEDED
26	U16349	Hex HD. Capscrew 1/2"-13NC.	2
29	U60933	Hose Reel Frame Weldment	1
30	U60859	Cover Plate	1
34	U60873	Front Bearing Support Weldment	1
35	U54330	Hydraulic Motor Mount Weldment	1
38	U41711	Soc. HD. Capscrew 3/4"-10NC.	4
39	U54262**	Double Sprocket (72 tooth)	1
40	U43920	Double Sprocket (16 tooth)	1
41	U43923A	Chain 54" long	1
43	U16347X	Cotter Pin 5/32" x 1 1/2" long	1
44	U54334	Hose Reel - Reel Weldment	1
45	U61147	Hose Reel Shaft Weldment	1
46	U20692	Connecting Link	1
47	U43921	Chain Half Link	1
Item #14: Rotating Sleeve Section for 1" is 1 3/4"OD and for 1 1/4" is 2 1/8"OD			

BALL FLOAT INSTALLATION

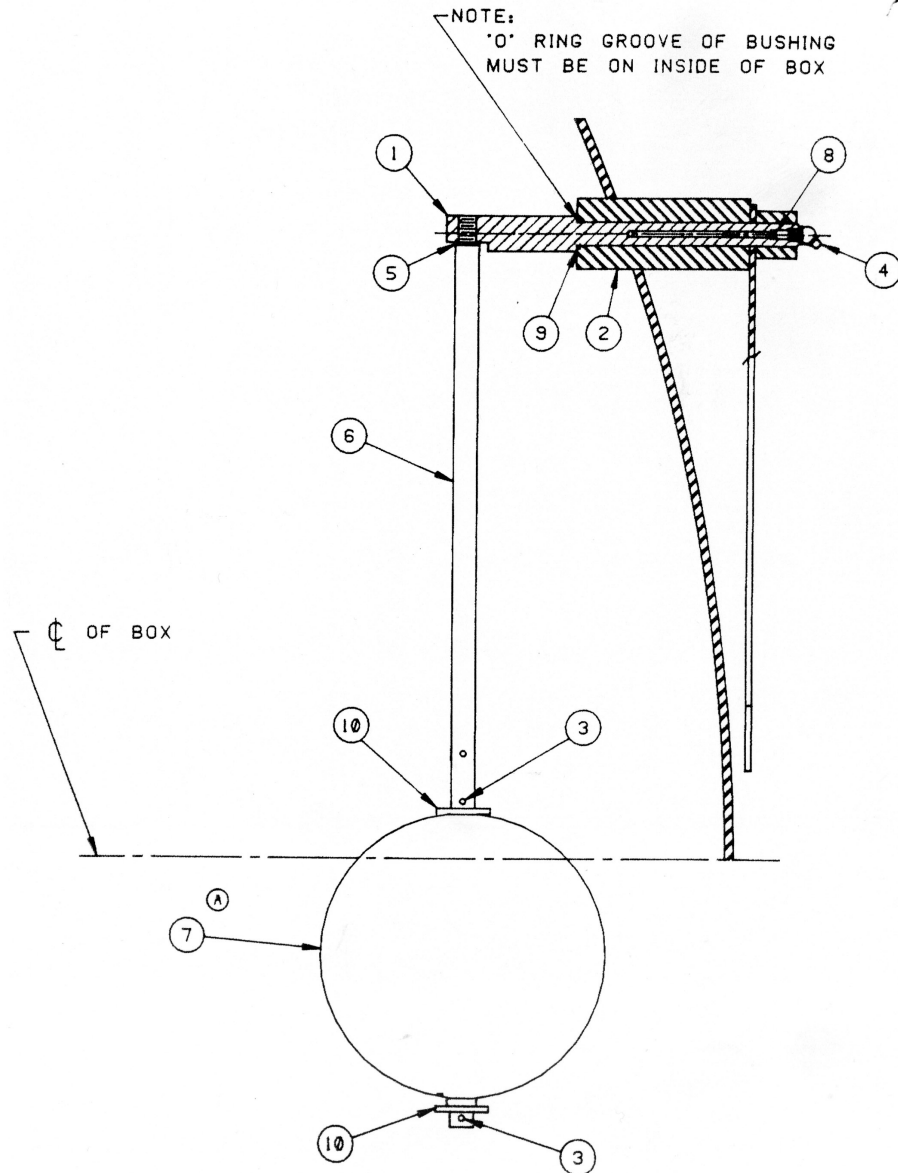
Part Number U62424



ITEM #	ASPC PART #	DESCRIPTION	QUANTITY NEEDED
Float Ball Installation			
	U62424	Complete Assembly	
1	U63474	Float Seal Weldment (Not Shown)	1
2	U63473	Float Seal Weldment	1
3	U63718	Screen Weldment	2
4	U44388	Float Ball 10" Dia.	2
5	U63715	Cage Weldment	2
6	U16343B	Capscrew 3/8" x 1 1/4" long	4
7	U16365B	Flatwasher 3/8"	4
8	U16367B	Lockwasher	12
9	U16360B	Hex Nut 3/8"	8
10	U62463	Ball Cage Weldment	2

FLOAT INDICATOR ASSEMBLY

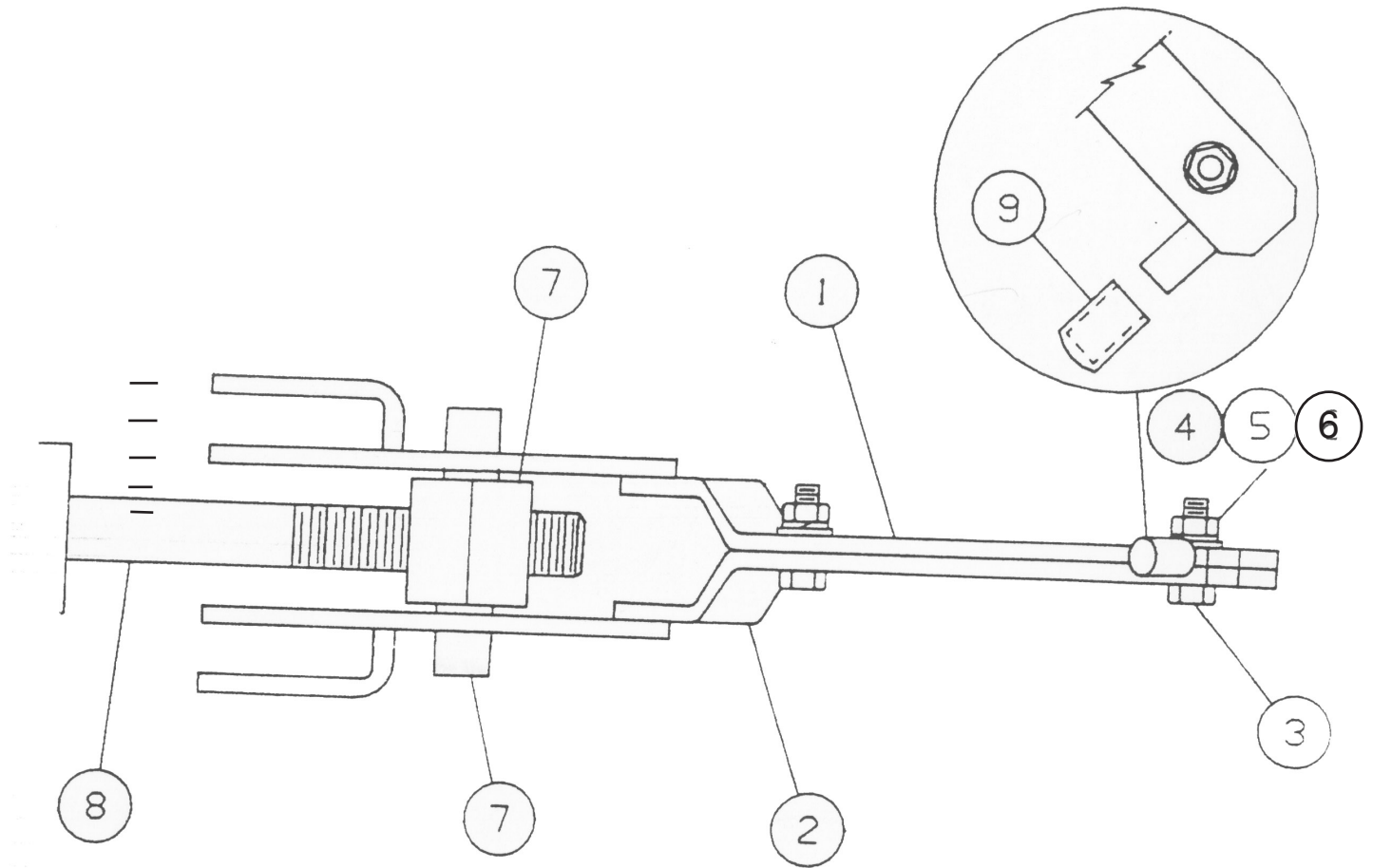
Part Number U58099



ITEM #	ASPC PART #	DESCRIPTION	QUANTITY NEEDED
	U58099	Float Indicator Assembly	
1	U37129	Arm & Shaft Assy	1
2	U37132	Bushing	1
3	U16420-L	Roll Pin	2
4	U41759	Grease Fitting	1
5	U16366B	3/8" Lockwasher	1
6	U37133	Float Arm	1
7	U45113	Float-1/2 Slide Rod Style (Stainless Steel)	1
8	U16420-V	Roll Pin	1
9	U41771	O-Ring	1
10	U16364G	7/16 Cadmium Plated Flatwasher	2
11	U54088	Not Shown-Offset Pointer for: 400/800/1200	1

LOWER DOOR LOCK ASSEMBLY

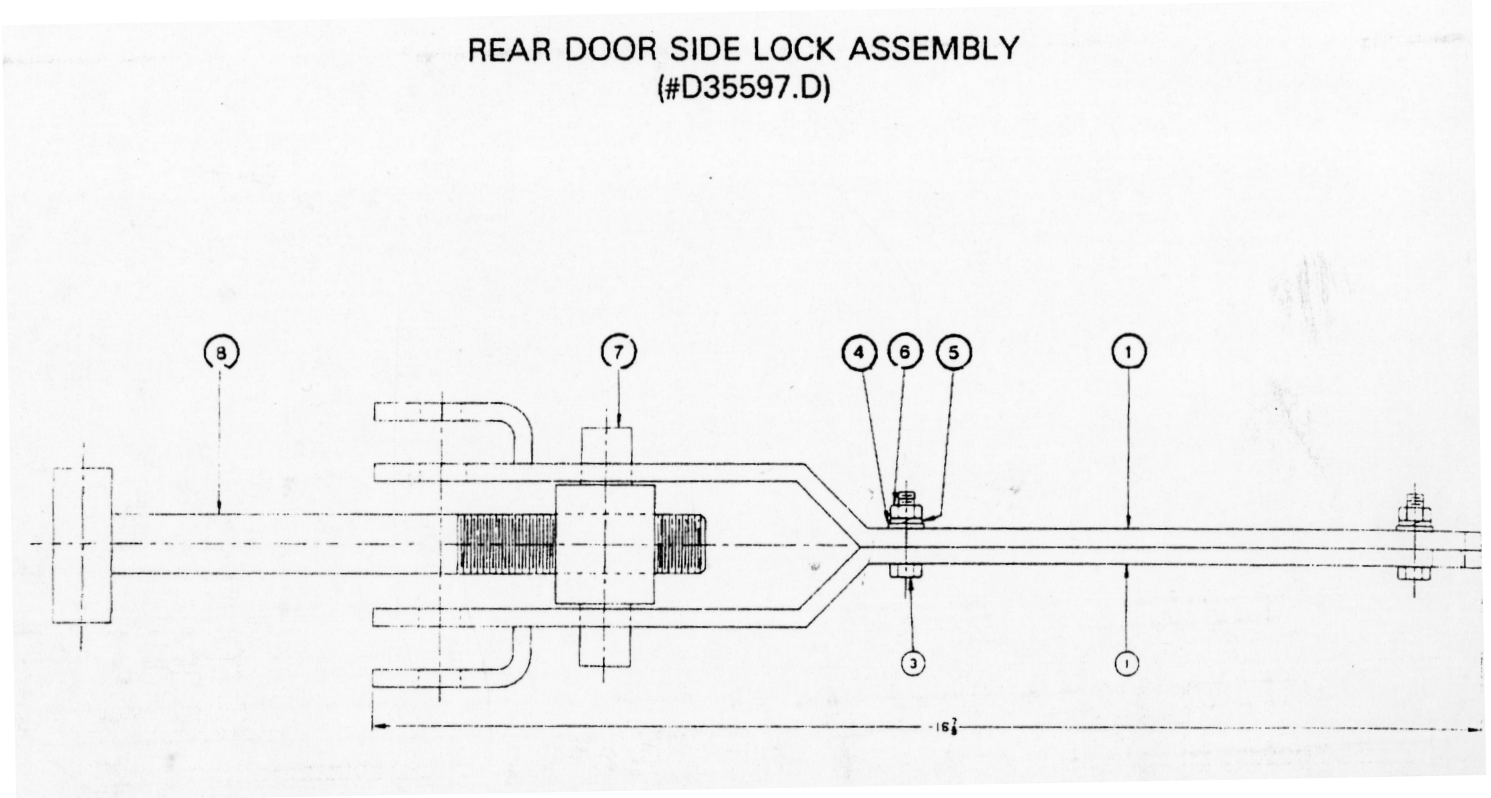
Part Number U51466**



ITEM #	ASPC PART #	DESCRIPTION	QUANTITY NEEDED
Lower Door Lock Assembly			
	U51466**	Lower Lock Assmebly	
1	U51467**	Lock Handle-Right	1
2	U51468	Lock Handle-Left	1
3	U16339	5/16 - 18NC x 1 Capscrew	2
4	U16364A	5/16" Flatwasher	2
5	U16366A	5/16" Lockwasher	2
6	U16359B	5/16" - 18NC Hexagon Nut	2
7	U35446	Adjusting Block	1
8	U35601	Lock Adjusting Rod	1

REAR DOOR LOCK ASSEMBLY

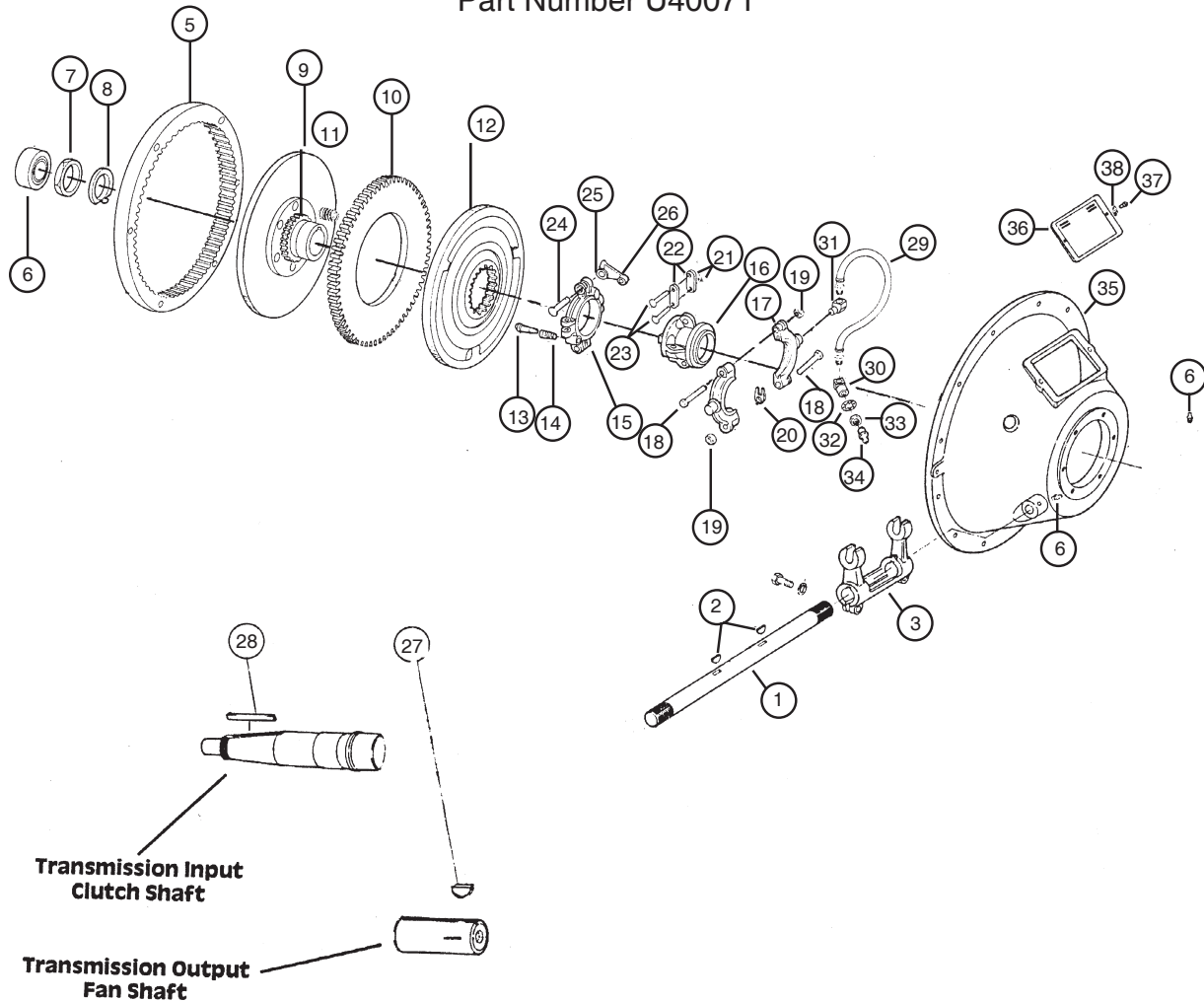
REAR DOOR SIDE LOCK ASSEMBLY
(#D35597.D)



ITEM #	ASPC PART #	DESCRIPTION	QUANTITY NEEDED
Rear Door Side Lock Assembly			
	U35597**	Side Lock Assembly	
1	U35598**	Lock Handle With Stop	1
2	U38638**	Lock Handle Half	1
3	U16339	5/16"-18NC x 1 Capscrew	2
4	U16364A	Flatwasher 5/16"	2
5	U16366A	Lockwasher 5/16"	2
6	U16359B	5/16"-18NC Hex Nut	2
7	U35446	Adjsuting Block	1
8	U35443	Lock Adjusting Rod	1

SINGLE STAGE TRANSMISSION CLUTCH AND BELL HOUSING ASSEMBLIES

Part Number U40071



ITEM #	ASPC PART #	DESCRIPTION	QUANTITY NEEDED
Single Stage Transmission Clutch & Bell Housing Assemblies			
	U40071	Complete Assembly	
1	U40322	Clutch Release Shaft	1
2	U41907	Woodruff Keys	2
3	U40320	Fork w/ 2 bolts and 2 lockwashers	1
4	U40295	Grease Fittings	2
5	U40319	Drive Ring - Single Stage	1
6	U40291	Pilot Bearing (INT.UB-263 & GMC 453	1
6	U40802	Pilot Bearing (Ford 300)	1
7	U40317	Nut	1
8	U40318	Washer	1
9*	U40405	Hub & Back Plate	1
10*	U40402	Drive Plate (same as U45031)	2
11*	U40404	Release Springs	6
12*	U40403	Float Plate	1
13*	U40390	Adjusting Lock Pin	1
14*	U40391	Adjusting Lock Pin Spring	1

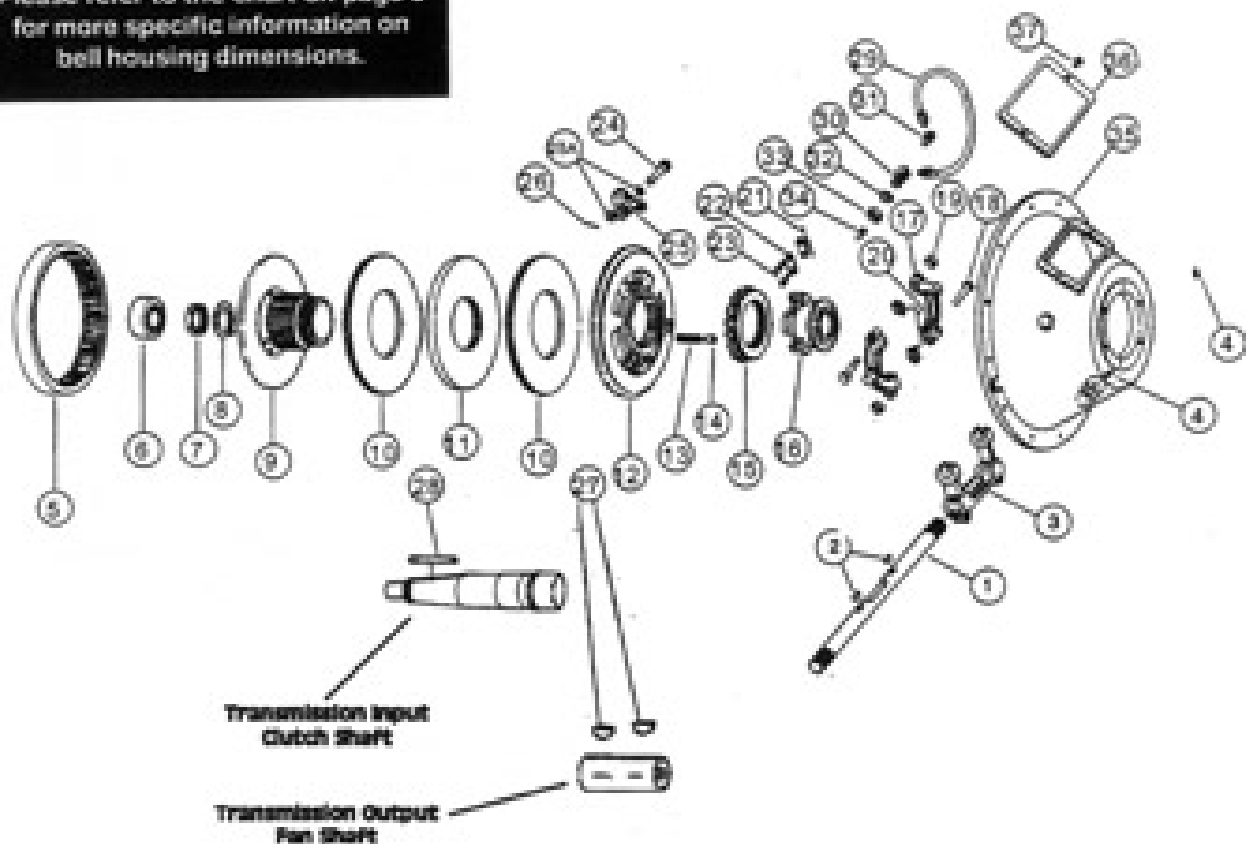
SINGLE STAGE TRANSMISSION CLUTCH AND BELL HOUSING ASSEMBLIES

ITEM #	ASPC PART #	DESCRIPTION	QUANTITY NEEDED
15*	U40386	Adjusting Yoke	1
16*	U40393	Sliding Sleeve	1
17*	U40415	Collar (same as U45028)	1
18*	U40617	Hexagon Head Capscrew	2
19*	U40400	Hexagon Nut	2
20*	U45030	Shim	2
21*	U40396	Cotter Pin	8
22*	U40394	Lever Link	8
23*	U40395	Lever Link Pins	8
24*	U40388	Lever Pin	4
25*	U40387	Lever Finger	4
26*	U40389	Cotter Pin	4
27	U40296	Woodruff key-Fan	1
28	U40321	Key (Clutch)	1
29	U40267	Grease Hose (Fire Resistant)	1
30	U41705	Fitting Elbow	1
31	U41706	Fitting Elbow	1
32	U40285	Lock Washer	1
33	U40283	Half Nut	1
34	U42402	Grease Fitting (same as U40295)	1
35	U43554	SAE #3 Bell Housing	1
35	U40280	SAE #4 Bell Housing	1
36	U40266	Cover Hand Hole Bell Housing	1
37	U40298	Screw Hex Head	2
38	U40284	Lock Washer	2
	U40385	Clutch Kit (13 to 15 & 24 to 26)	
	U40392	Sliding Sleeve Assy (16 to 23)	
	U45027	Collar Assy Kit (17 to 20)	
	U45026	Yoke & Sleeve assy (Items U40285 & U40392)	
		* ALL included in Part # U40071**	

DUAL STAGE TRANSMISSION CLUTCH AND BELL HOUSING ASSEMBLIES

Part Number U40147

Please refer to the chart on page 9
for more specific information on
bell housing dimensions.



ITEM #	ASPC PART #	DESCRIPTION	QUANTITY NEEDED
Single Stage Transmission Clutch & Bell Housing Assemblies			
	U40071	Complete Assembly	
1	U40322	Clutch Release Shaft	1
2	U41907	Woodruff Keys	2
3	U40320	Fork w/ 2 bolts and 2 lockwashers	1
4	U40295	Grease Fittings	2
5	U40319	Drive Ring - Single Stage	1
6	U40291	Pilot Bearing (INT.UB-263 & GMC 453	1
6	U40802	Pilot Bearing (Ford 300)	1
7	U40317	Nut	1
8	U40318	Washer	1
9*	U40405	Hub & Back Plate	1
10*	U40402	Drive Plate (same as U45031)	2
11*	U40404	Release Springs	6
12*	U40403	Float Plate	1
13*	U40390	Adjusting Lock Pin	1
14*	U40391	Adjusting Lock Pin Spring	1

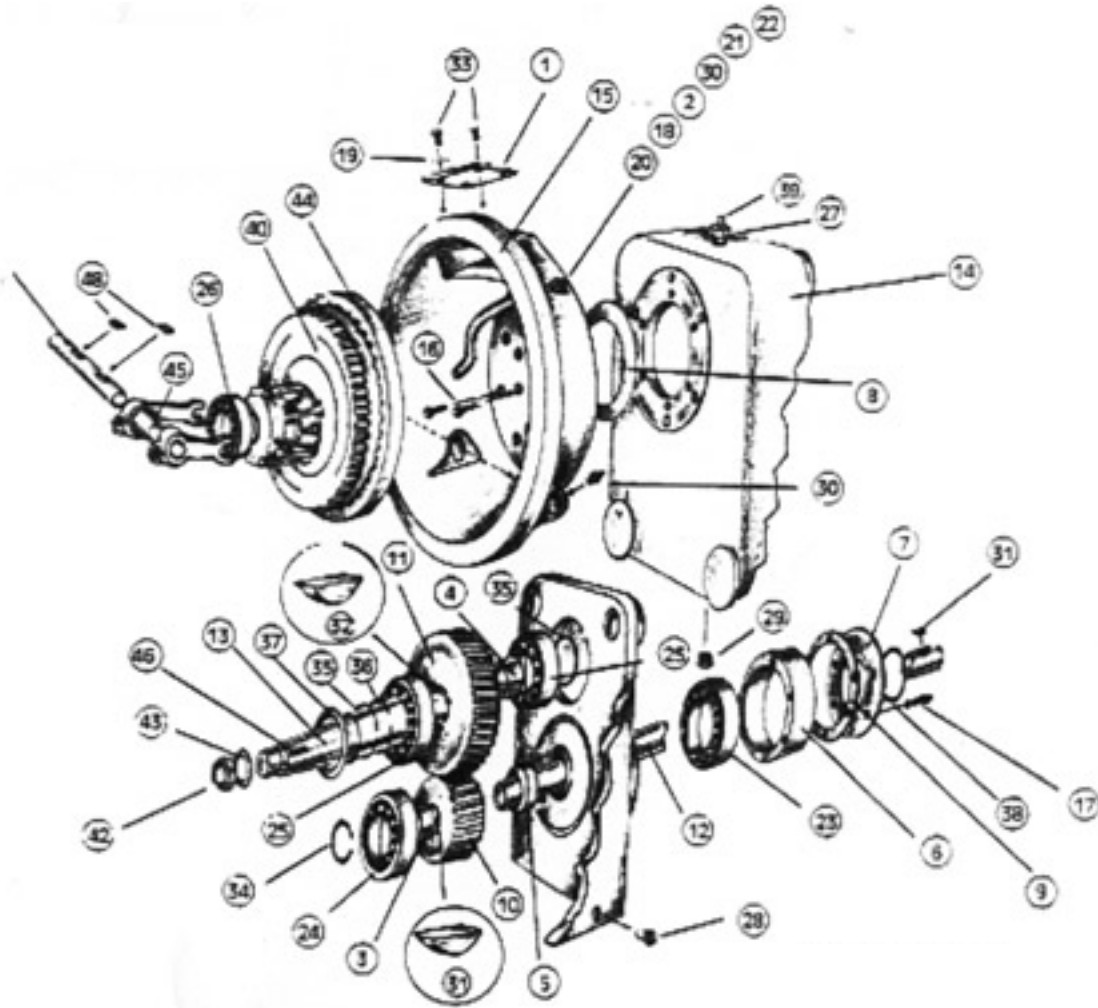
SINGLE STAGE TRANSMISSION CLUTCH AND BELL HOUSING ASSEMBLIES

ITEM #	ASPC PART #	DESCRIPTION	QUANTITY NEEDED
15*	U40386	Adjusting Yoke	1
16*	U40393	Sliding Sleeve	1
17*	U40415	Collar (same as U45028)	1
18*	U40617	Hexagon Head Capscrew	2
19*	U40400	Hexagon Nut	2
20*	U45030	Shim	2
21*	U40396	Cotter Pin	8
22*	U40394	Lever Link	8
23*	U40395	Lever Link Pins	8
24*	U40388	Lever Pin	4
25*	U40387	Lever Finger	4
26*	U40389	Cotter Pin	4
27	U40296	Woodruff key-Fan	1
28	U40321	Key (Clutch)	1
29	U40267	Grease Hose (Fire Resistant)	1
30	U41705	Fitting Elbow	1
31	U41706	Fitting Elbow	1
32	U40285	Lock Washer	1
33	U40283	Half Nut	1
34	U42402	Grease Fitting (same as U40295)	1
35	U43554	SAE #3 Bell Housing	1
35	U40280	SAE #4 Bell Housing	1
36	U40266	Cover Hand Hole Bell Housing	1
37	U40298	Screw Hex Head	2
38	U40284	Lock Washer	2
	U40385	Clutch Kit (13 to 15 & 24 to 26)	
	U40392	Sliding Sleeve Assy (16 to 23)	
	U45027	Collar Assy Kit (17 to 20)	
	U45026	Yoke & Sleeve assy (Items U40285 & U40392)	
		* ALL included in Part # U40071**	

SINGLE STAGE TRANSMISSION WITH #3 BELL HOUSING - OLD STYLE MODEL # 1349-K (21) (FOR FORD AND CUMMINS DIESEL AUXILIARY ENGINES W/ TRANSMISSION SERIAL NUMBERS OF 168155 AND LOWER)

Part Number U43553

* NOTE: Complete transmission not for sale on this model.
REPLACEMENT PARTS ONLY



*Note: As of September 1988, Cotta® Transmission has made a manufacturing change to all single stage transmissions with serial numbers 168156 and higher. Cotta® now uses a newer style of output shaft, output bearing, transmission case and output housing. This change makes parts manufactured prior to September 1988 non-interchangeable with the newer style transmission parts (serial number 168156 and higher). When ordering Cotta® transmission parts, please refer to the appropriate pages in this catalog by using the model and serial numbers of the transmission you are buying replacement parts for. These numbers are located on your transmission's identification tag.

SINGLE STAGE TRANSMISSION WITH #3 BELL HOUSING - OLD STYLE MODEL # 1349-K (21)

(FOR FORD AND CUMMINS DIESEL AUXILIARY ENGINES W/TRANSMISSION SERIAL NUMBERS
OF 168155 AND LOWER)

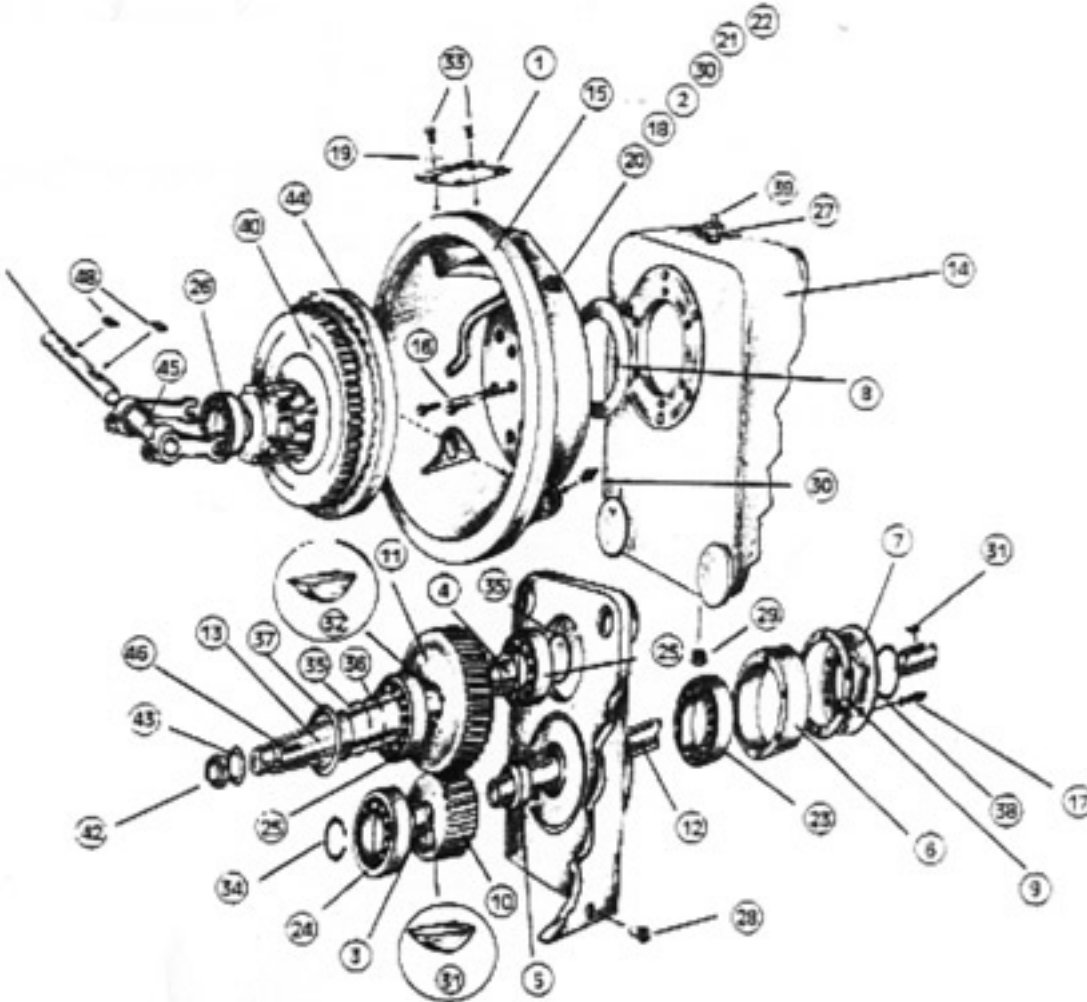
ITEM #	ASPC PART #	DESCRIPTION	QUANTITY NEEDED
Single Stage Transmission with #3 Bell Housing - Old Style			
<i>Model # 1349-K (21)</i>			
Replacement Parts Only			
Ford & Cummins Diesel Auxiliary Engines w/ Transmission Serial Numbers of 168155 & LOWER			
1	U40266	Hand hole Cover (Bell Housing)	1
2	U40267	Tube-Hose (Fire Resistant)	1
3	U40268	Spacer - Output Shaft	1
4	U40269	Spacer - Input Shaft Rear	1
5	U40270	Spacer - Output Shaft Rear	1
6	U40271	Housing - Bearing Seal	1
7	U40272	Housing - Output Shaft Housing	1
8	U40273	Gasket - Bell Housing Case	1
9	U40274	Gasket - Bearing Set Housing	2
10	U40275	Gear - Output Shaft 32T	1
11	U40276	Gear - Input Shaft 45T	1
12	U43443	Output Shaft	1
13	U40278	Input Shaft	1
14	U40279	Case (No Longer Available)	
15	U43554	#3 Bell Housing	1
16	U40281	Capscrew	6
17	U40282	Capscrew	6
18	U40283	Half Nut	1
19	U40284	Shakeproof 1/4" Lockwasher	2
20	U40285	Shakeproof Lockwasher	1
21	U41706	90 Elbow (Small)	1
22	U41705	90 Elbow (Large)	1
23	U40288	Output Shaft Rear Bearing	1
24	U40289	Output Shaft Front Bearing	1
25	U40290	Input Shaft Bearing	1
26	U40802	Pilot Bearing (Cummins 4BT3.9) (Ford Diesel & Ford 300 Gas)	1
27	U40292	Reducer	1
28	U42395	Oil Level Pipe Plug	1
29	U40294	Magnetic Drain Pipe Plug	1
30	U42402	Grease Fitting	3
31	U40296	Output Gear Woodruff Key	2
32	U40297	Input Gear Woodruff Key	1
33	U45520	Button Head Screw	2
34	U40299	Snap Ring - Output Shaft Front	1
35	U40300	Snap Ring - Input Shaft	2
36	U40301	Snap Ring - Input Bearing	1
37	U40302	Oil Seal - Input Shaft	1
38	U40303	Oil Seal - Output Shaft	1
39	U40304	Breather	1
40	U40071	Clutch	1
42	U40317	Nut	1
43	U40318	Washer	1
44	U40319	Drive Ring	1
45	U40320	Fork	1
46	U40321	Key	1
47	U40322	Clutch Release Shaft	1
48	U41907	Woodruff Key	2

SINGLE STAGE TRANSMISSION WITH #4 BELL HOUSING - OLD STYLE MODEL # 1349-K (23)

(FOR FORD® 300 GAS, DETROIT® (GMC®) DIESEL AND INT.® UB-264 AUXILIARY ENGINES W/TRANSMISSION SERIAL NUMBERS OF 168155 AND LOWER)

Part Number U20619

* NOTE: Complete transmission not for sale on this model.
REPLACEMENT PARTS ONLY



*Note: As of September 1988, Cotta® Transmission has made a manufacturing change to all single stage transmissions with serial numbers 168156 and higher. Cotta® now uses a newer style of output shaft, output bearing, transmission case and output housing. This change makes parts manufactured prior to September 1988 non-interchangeable with the newer style transmission parts (serial number 168156 and higher). When ordering Cotta® transmission parts, please refer to the appropriate pages in this catalog by using the model and serial numbers of the transmission you are buying replacement parts for. These numbers are located on your transmission's identification tag.

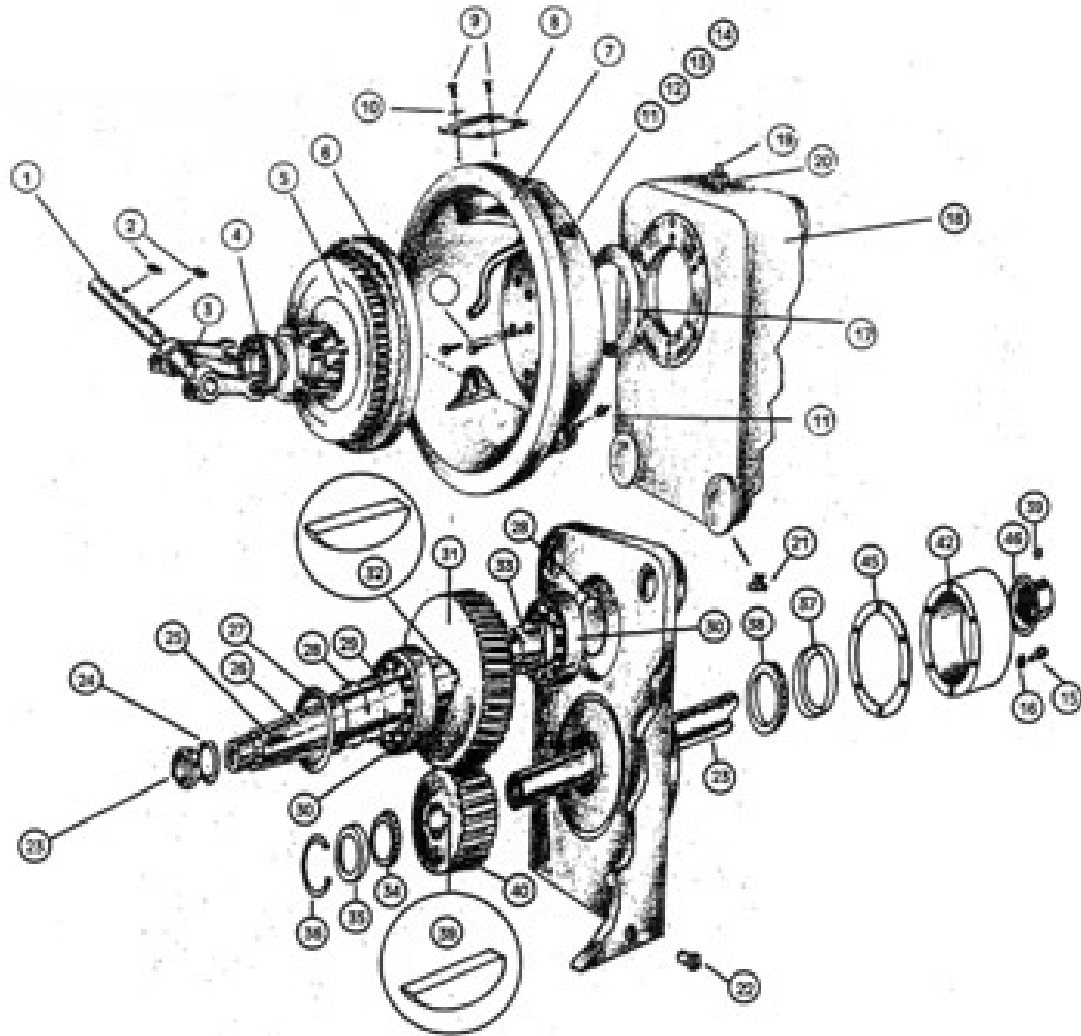
SINGLE STAGE TRANSMISSION WITH #4 BELL HOUSING - OLD STYLE MODEL # 1349-K (23)

ITEM #	ASPC PART #	DESCRIPTION	QUANTITY NEEDED
		Single Stage Transmission with #4 Bell Housing - Old Style <i>Model # 1349-K (23)</i> <i>Replacement Parts Only</i> Ford 300 Gas, Detroit (GMC) Diesel & INT* UB-264 Auxiliary Engines w/ Transmission Serial Numbers of 168155 & LOWER	
1	U40266	Hand Hole Cover (Bell Housing)	1
2	U40267	Tube-Hose (Fire Resistant)	1
3	U40268	Spacer - Output Shaft	1
4	U40269	Spacer - Input Shaft Rear	1
5	U40270	Spacer - Output Shaft Rear	1
6	U40271	Housing - Bearing Seal	1
7	U40272	Housing - Output Shaft Housing	1
8	U40273	Gasket - Bell Housing Case	1
9	U40274	Gasket - Bearing Set Housing	2
10	U40275	Gear - Output Shaft 32T	1
11	U40276	Gear - Input Shaft 45T	1
12	U43443	Output Shaft	1
13	U40278	Input Shaft	1
14	U40279	Case (No Longer Available)	
15	U40280	#4 Ball Housing	1
16	U40281	Capscrew	6
17	U40282	Capscrew	6
18	U40283	Half Nut	1
19	U40284	Shakeproof Lockwasher	2
20	U40285	Shakeproof Lockwasher	1
21	U41706	90 Elbow (Small)	1
22	U41705	90 Elbow (Large)	1
23	U40288	Output Shaft Rear Bearing	1
24	U40289	Output Shaft Front Bearing	1
25	U40290	Input Shaft Bearing	2
26	U40291	Pilot Bearing (Ford 300 Gas, Detroit (GMC) Diesel & Int. UB-263)	1
27	U40292	Reducer	1
28	U42395	Oil Level Pipe Plug	1
29	U40294	Magnetic Drain Pipe Plug	1
30	U42402	Grease Fitting	3
31	U40296	Woodruff Key	2
32	U40297	Woodruff Key	1
33	U45520	Button Head Screw	2
34	U40299	Snap Ring - Output Shaft Front	1
35	U40300	Snap Ring - Input Shaft	2
36	U40301	Snap Ring - Input Bearing	1
37	U40302	Oil Seal - Input Shaft	1
38	U40303	Oil Seal - Output Shaft	1
39	U40304	Breather	1
40	U40071	Clutch	1
42	U40317	Nut	1
43	U40318	Washer	1
44	U40319	Drive Ring	1
45	U40320	Fork	1
46	U40321	Key	1
47	U40322	Clutch Release Shaft	1
48	U41907	Woodruff Key	2

SINGLE STAGE TRANSMISSION WITH #3 BELL HOUSING - NEW STYLE

(FOR FORD AND CUMMINS DIESEL AUXILIARY ENGINES W/
TRANSMISSION SERIAL NUMBERS OF 168156 AND HIGHER)

Part Number U45374



*Note: As of September 1988, Cotta® Transmission has made a manufacturing change to all single stage transmissions with serial numbers 168156 and higher. Cotta® now uses a newer style of output shaft, output bearing, transmission case and output housing. This change makes parts manufactured prior to September 1988 non-interchangeable with the newer style transmission parts (serial number 168156 and higher). When ordering Cotta® transmission parts, please refer to the appropriate pages in this catalog by using the model and serial numbers of the transmission you are buying replacement parts for. These numbers are located on your transmission's identification tag.

SINGLE STAGE TRANSMISSION WITH #3 BELL HOUSING - NEW STYLE

(FOR FORD AND CUMMINS DIESEL AUXILIARY ENGINES W/ TRANSMISSION SERIAL NUMBERS OF 168156 AND HIGHER)

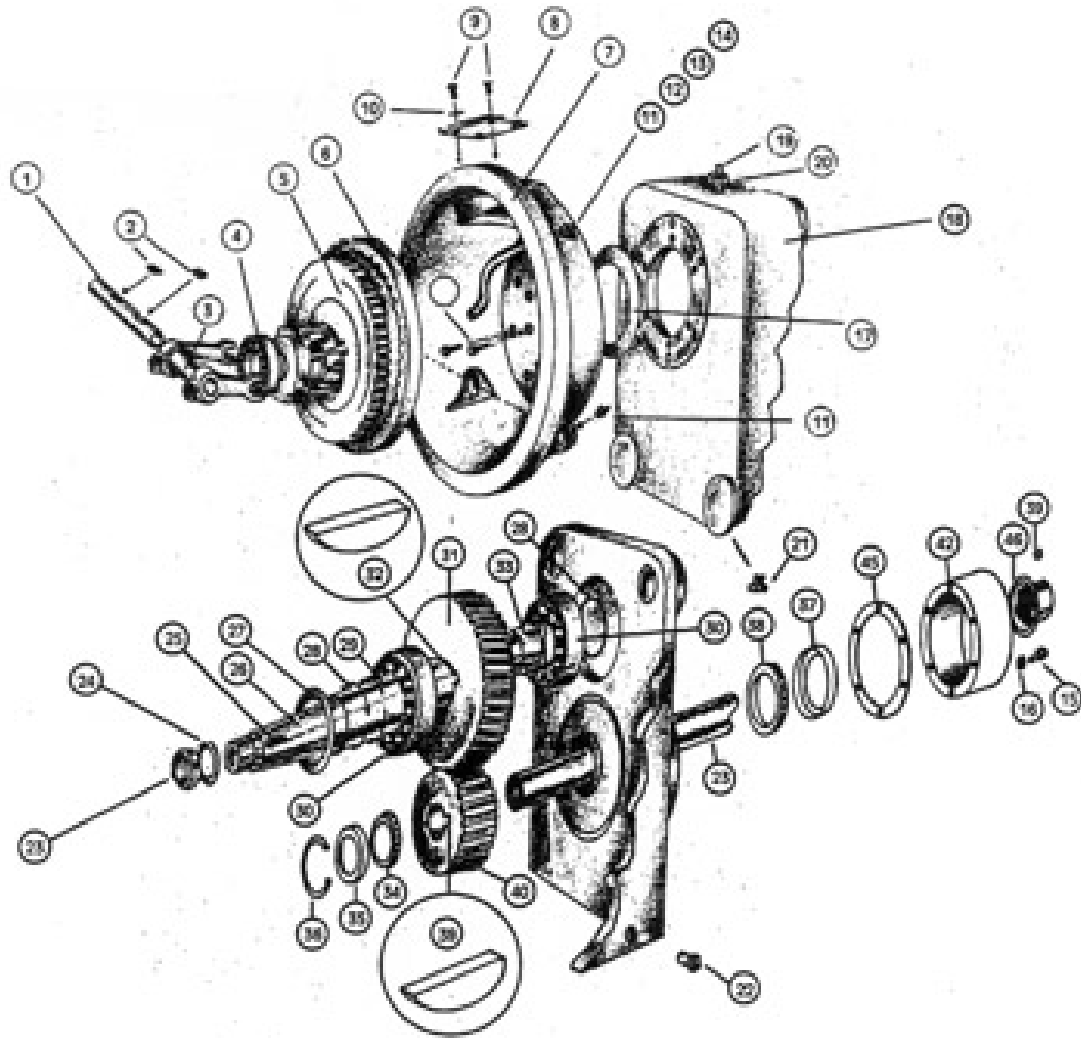
Part Number U45374

ITEM #	UEMSI PART #	DESCRIPTION	QUANTITY NEEDED
		Single Stage Transmission with #3 Bell Housing - New Style	
		Ford or Cummins Diesel Auxiliary Engines w/transmission Serial Numbers of 168156 & HIGHER	
	U45374	Cotta Transmission S1349-21 (Complete w/clutch Assembly)	
	U45374A	Cotta Transmission S1349-21 (Without Clutch Assembly)	
1	U40322	Clutch Release Shaft	1
2	U41907	Woodruff Keys	2
3	U40320	Fork w/ 2 bolts & 2 lockwashers	1
4	U40802	Pilot Bearing (Ford & Cummins Diesel)	1
5	U40071	Clutch Single Stage Assy	1
6	U40319	Drive Ring	1
7	U43554	#3 Bell Housing	1
8	U40266	Hand Hole Cover	1
9	U40298	Hex Head Screw	2
10	U40284	Lock Washer	2
11	U42402	Zerk Fitting	3
12	U40283	Half Nut	1
13	U40285	Lock Washer	1
14	U40267	Grease Hose	1
15	U40281	Hex Head Capscrew	10
16	U45566	Lock Washer	10
17	U40273	Gasket - Bell Housing Case	1
18	U45565	Case	1
19	U40304	Breather	1
20	U40292	Reducer	1
21	U40294	Magnetic Drain Pipe Plug	1
22	U42395	Oil Level Pipe Plug	1
23	U40317	Nut	1
24	U40318	Washer	1
25	U40321	Key	1
26	U40278	Shaft - Input	1
27	U40302	Oil Seal Input Shaft	1
28	U40300	Snap Ring - Input Shaft	2
29	U40301	Snap Ring - Input Bearing	1
30	U40290	Bearing - Input Shaft	2
31	U40276	Gear - Input (45 Tooth)	1
32	U40297	Woodruff Key	1
33	U40269	Spacer - Input Shaft	1
34	U45570	Bearing Cone (B.H.)	1
35	U45571	Bearing Cup (B.H.)	1
36	U45572	Snap Ring - Output Shaft (B.H.)	1
37	U45568	Bearing Cup (Fan)	1
38	U45569	Bearing Cone (Fan)	1
39	U40296	Woodruff Key	2
40	U40275	Gear - Output Shaft (32 Tooth)	1
41	U45564	Shaft - Output	1
42	U45563	Housing - Output	1
43	U45574	.020 Shim	1
44	U45575	.007 Shim	3
45	U45576	.005 Shim	3
46	U45573	Oil Seal Output Shaft	1

SINGLE STAGE TRANSMISSION WITH #4 BELL HOUSING - NEW STYLE

(FOR FORD® 300 GAS, DETROIT® (GMC®) DIESEL AND INT.® UB-264 AUXILIARY ENGINES W/TRANSMISSION SERIAL NUMBERS OF 168155 AND LOWER)

Part Number U20619



*Note: As of September 1988, Cotta® Transmission has made a manufacturing change to all single stage transmissions with serial numbers 168156 and higher. Cotta® now uses a newer style of output shaft, output bearing, transmission case and output housing. This change makes parts manufactured prior to September 1988 non-interchangeable with the newer style transmission parts (serial number 168156 and higher). When ordering Cotta® transmission parts, please refer to the appropriate pages in this catalog by using the model and serial numbers of the transmission you are buying replacement parts for. These numbers are located on your transmission's identification tag.

SINGLE STAGE TRANSMISSION WITH #4 BELL HOUSING - NEW STYLE

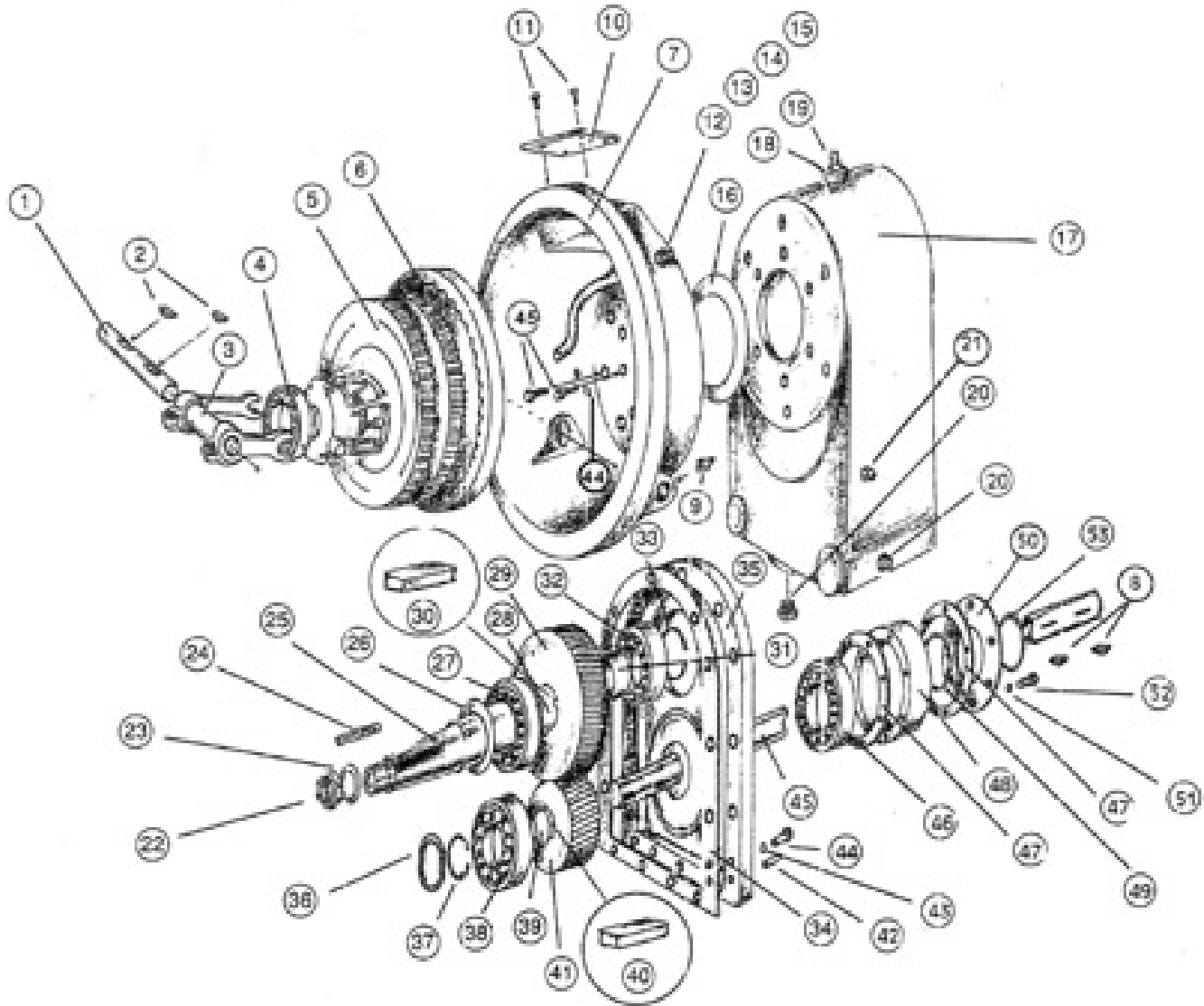
(FOR FORD® 300 GAS, DETROIT® (GMC®) DIESEL AND INT.® UB-264 AUXILIARY ENGINES W/TRANSMISSION
SERIAL NUMBERS OF 168155 AND LOWER)

Part Number U20619

ITEM #	ASPC PART #	DESCRIPTION	QUANTITY NEEDED
		Single Stage Transmission with #4 Bell Housing - Old Style	
		Ford 300 Gas & Detroit (GMC) Diesel Auxiliary Engines w/transmission Serial Numbers of 168156 & HIGHER	
	U20619	Cotta Transmission S1349-23 (Complete with Clutch Assembly)	
	U20619A	Cotta Transmission S1349-23 (Without Clutch Assembly)	
1	U40322	Clutch Release Shaft	1
2	U41907	Woodruff Keys	2
3	U40320	Fork w/ 2 bolts & 2 lockwashers	1
4	U40291	Pilot Bearing (Detroit (GMC) 453 Diesel, Ford Gas & Int UB-264)	1
5	U40071	Clutch - Single Stage Assy	1
6	U40319	Drive Ring	1
7	U40280	#4 Bell Housing - Old Style	1
8	U40266	Hand Hole Cover	1
9	U40298	Hex Head Screw	2
10	U40284	Lock Washer	2
11	U42402	Zerk Fitting	3
12	U40283	Half Nut	1
13	U40285	Lock Washer	1
14	U40267	Grease Hose	1
15	U40281	Hex Head Capscrew	10
16	U45566	Lock Washer	10
17	U40273	Gasket - Ball Housing Case	1
18	U45565	Case	1
19	U40304	Breather	1
20	U40292	Reducer	1
21	U40294	Magnetic Drain Pipe Plug	1
22	U42395	Oil Level Pipe Plug	1
23	U40317	Nut	1
24	U40318	Washer	1
25	U40321	Key	1
26	U40278	Shaft - Input	1
27	U40302	Oil Seal - Input Shaft	1
28	U40300	Snap Ring - Input Shaft	2
29	U40301	Snap Ring - Input Bearing	1
30	U40290	Bearing - Input Shaft	2
31	U40276	Gear - Input (45 Tooth)	1
32	U40297	Woodruff Key	1
33	U40269	Spacer - Input Shaft	1
34	U45570	Bearing Cone (B.H.)	1
35	U45571	Bearing Cup (B.H.)	1
36	U45572	Output Shaft Snap Ring (B.H.)	1
37	U45568	Bearing Cup (Fan)	1
38	U45569	Bearing Cone (Fan)	1
39	U40296	Woodruff Key	2
40	U40275	Gear - Output Shaft (32 Tooth)	1
41	U45564	Shaft - Output	1
42	U45563	Housing - Output	1
43	U45574	.020 Shim	1
44	U45575	.007 Shim	3
45	U45576	.005 Shim	3
46	U45573	Oil Seal Output Shaft	1

DUAL STAGE TRANSMISSION WITH CLUTCH ASSEMBLY

Part Number U43127



ITEM #	ASPC PART #	DESCRIPTION	QUANTITY NEEDED
		Dual Stage Transmission with Clutch Assembly	
	U43127	Cotta Transmission - Dual Stage S-1521-1 w/clutch assembly	
	U43127A	Cotta Transmission - Dual Stage S-1521-1 without clutch assembly	
1	U29156	Clutch Release Shaft	1
2	U41907	Woodruff Keys	2
3	U29154	Fork w/ 2 bolts & 2 lockwashers	1
4	U40802	Pilot Bearing (Ford 429 or Cummins 6BTA5.9)	1
4	U40291	Pilot Bearing (Detroit 6V-53)	1
**	Dimensions	DIA (2.442 in. x WD .934 in. x BORE 1.178 in.	
4	U40328	Pilot Bearing (Detroit 6V-53)	1
**	Dimensions	DIA 2.442 in. x WD .630 in. x BORE 1.178 in.	

DUAL STAGE TRANSMISSION WITH CLUTCH ASSEMBLY

Part Number U43127

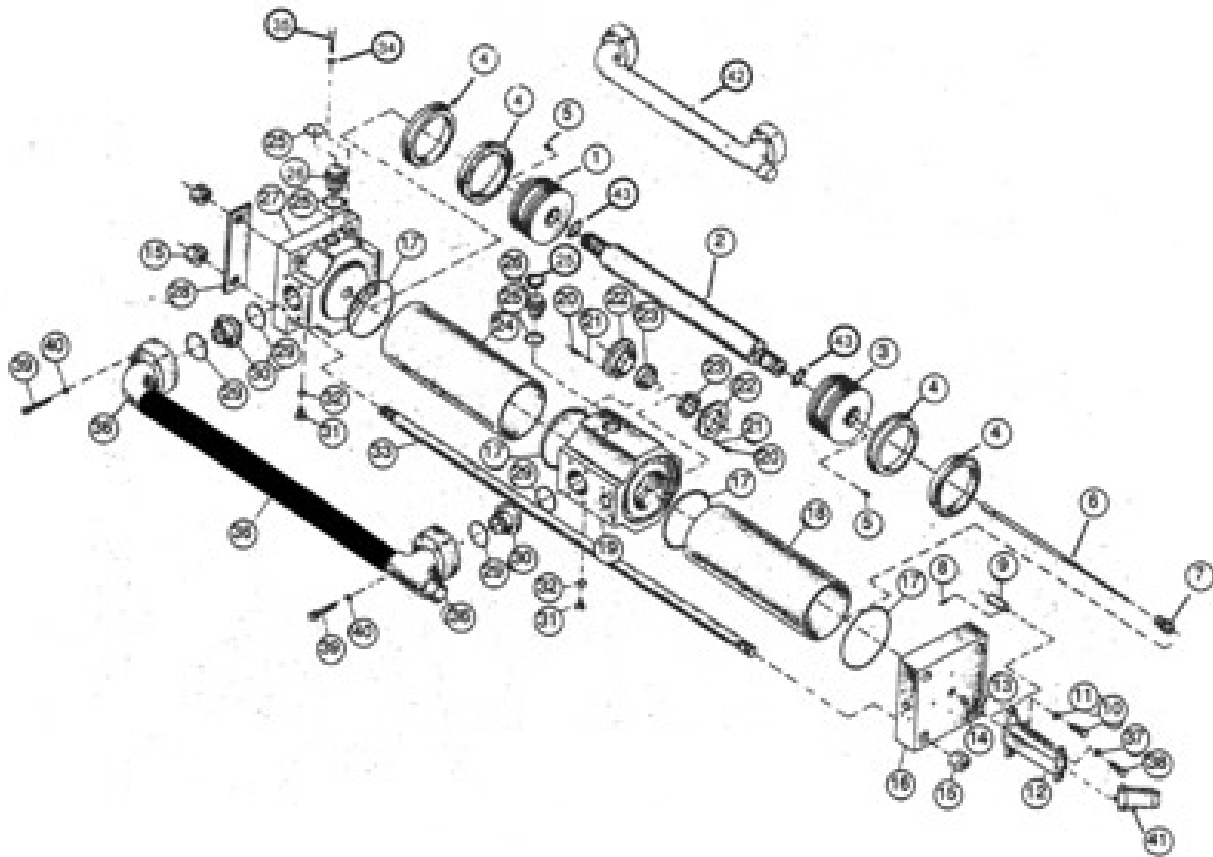
ITEM #	ASPC PART #	DESCRIPTION	QUANTITY NEEDED
5	U40147	Clutch Assembly	1
6	U29153	Drive Ring	1
7	U29129	SAE #2 Bell Housing	1
8	U40296	Key - Fan	2
9	U42401	Grease Fitting	2
10	U29119	Bell Housing Hand Hole Cover	1
11	U42396	Button Head Screw	2
12	U42402	Grease Fitting	1
13	U40283	Half Nut	1
14	U40285	Lock Washer	1
15	U42397	Grease Hose	1
16	U29125	Gasket Input Housing	1
17	U29131	Transmission Case	1
18	U40304	Breather	1
19	U40292	Reducer Bushing	1
20	U40294	Magnetic Drain Pipe Plug	3
21	U42395	Oil Level Pipe Plug	2
22	U42375	Nut	1
23	U42376	Washer	1
24	U40321	Key - Clutch	1
25	U29127	Input Shaft	1
26	U29150	Oil Seal Input Shaft	1
27	U29138	Bearing-Input Shaft(Bell Housing Side)	1
28	U29120	Spacer-Input Shaft(Bell Housing Side)	1
29	U29123	Input Gear	1
30	U29118	Key	1
31	U29121	Spacer-Input Shaft	1
32	U29137	Bearing Input Shaft(Cover Side)	1
33	U40299	Snap Ring - Input Shaft	1
34	U29130	Gasket - Case Cover	1
35	U29132	Cover	1
36	U42379	Wave Spring Washer	1
37	U29148	Snap Ring-External Output Shaft	2
38	U29139	Bearing Output Shaft(Bell Housing Side)	1
39	U29122	Spacer Output Shaft(Bell Housing Side)	1
40	U29117	Key	1
41	U29124	Output Gear	1
42	U46435	Dowel Pin 5/8"	2
43	U29136	Lock Washer	29
44	U42394	Cap Screw	29
45	U40264	Output Shaft	1
46	U29140	Bearing Output Shaft(Bell Housing Side)	1
47	U29126	Gasket Output Bearing Housing	2
48	U42400	Output Bearing Housing	1
49	U29146	Snap Ring - External	1
50	U42399	Output Oil Seal Housing	1
51	U29135	Lock Washers	6
52	U42393	Hex Head Screw Cap	6
53	U29149	Oil Seal Output Shaft	1

VACTOR® STYLE PUMP

Part Number U39224

High pressure sewer cleaning pump assembly for Vactor® units with serial numbers 81-3-1664 and older

- Used on Vactor® models 800, 810, 1200, 2045
- Fits early March 1981 Vectors® and older
- Manufactured by ASPC® to exacting OEM specifications
- Pump is offered complete or individual parts
- U39224 pump has a full one year warranty



**** When ordering parts for this pump, it's helpful to know the serial number of the unit which is stamped on the identification tag located on the outside face of the fan housing cover ****

VACTOR® STYLE PUMP

Part Number U39224

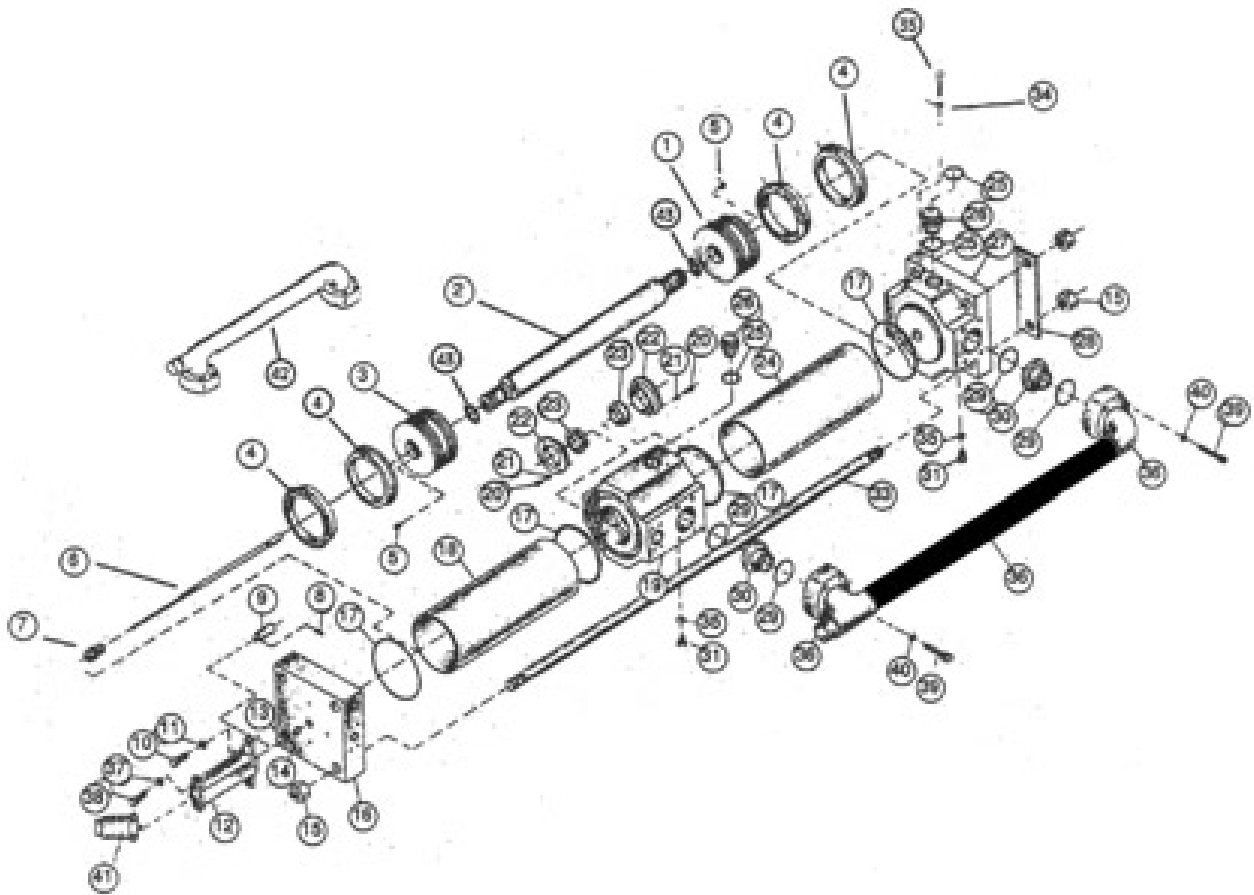
ITEM #	ASPC PART #	DESCRIPTION	QUANTITY NEEDED
		High Pressure Sewer Cleaning Pump Assembly for Vactor Units with Serial Number 81-3-1664 & Older Vactor Models 800, 810, 2100 & 2045 Fits early March 1981 and Older	
	U39224	Complete Assembly	
1	U29950	Bronze Water End Piston	1
2	U29328	Piston Rod	1
3	U39260	Piston Oil End Duct. Iron	1
4	U29638	Piston Seal	4
5	U41848	Set Screw Soc. HD S.S.	2
6	U39200	Sensing Rod	1
7	U29678	Sensing Rod Yoke	1
8	U16420W	Roll Pin	1
9	U39201	Sensing Rod Piston	1
10	U16348	Hex Head Capscrew 1/2"x13x1 1/4"	2
11	U16366C	Lock Washer	2
12	U55870	Detent Block Assembly	1
13	U39222	Bushing Hat Type	1
14	U29662	Sensing Rod Seal	1
15	U29644	Hex Nut 1 1/2"	8
16	U39210	Oil End Block	1
17	U29663	O-Ring 4	
18	U29321	Barrel - Oil End	1
19	U29325	Center Block	1
20	U29841	Cap Screw	8
21	U29842	Lock Washer 1/4" S.S.	8
22	U29698	Seal Keeper - Aluminum	2
23	U29664	Piston Rod Seal	2
24	U41717	Barrel - Water End	1
25	U29674	O-Ring 4 - 2" Check Valve	
26	U29385	2" Discharge Check Valve	2
27	U29326	Water End Block	1
28	U38653	Bolting Plate	2
29	U29640	O-Ring 4 - 3" Check Valve	
30	U29384	3" Intake Check Valve	2
31	U29826	Plug	2
32	U29827	O-Ring 2	
33	U29323	Truss Rod	4
34	U16366C	1/2" Lock Washer	8
35	U16334-I	Capscrew Soc. HD 1/2"x 13x 1 1/4"	8
36	U39215**	Intake Manifold Assy (Water)	1
37	U40149	Hi Col. 3/8" Lock Washer	2
38	U42523	Capscrew Soc. HD 3/8"	2
39	U16334-J	Capscrew Soc. HD 5/8"x11x3 1/4"	8
40	U16366-D	Lock Washer 5/8"	8
41	U42517	4-Way Pilot Valve	1
42	U29822**	Outlet Manifold Assy (Water)	1
43	U29923	O-Ring 2 - Piston Rod	
	U37495	Oil End Seal Repair Kit - Complete	
	U37496	Water End Seal Repair Kit - Complete	

VACTOR® STYLE PUMP

Part Number U53061

High pressure sewer cleaning pump assembly for Vactor® units with serial numbers 81-10-1786 and newer up to Model 2100

- Used on Vactor® models 800, 810, 1200, 2045
- Fits late September 1981 Vectors® and newer to 1990 when model numbers changed with the introduction of the 2100 model machines
- Manufactured by ASPC® to exacting OEM specifications
- Pump is offered complete or individual parts
- U53061 pump has a full one year warranty



**** When ordering parts for this pump, it's helpful to know the serial number of the unit which is stamped on the identification tag located on the outside face of the fan housing cover ****

VACTOR® STYLE PUMP

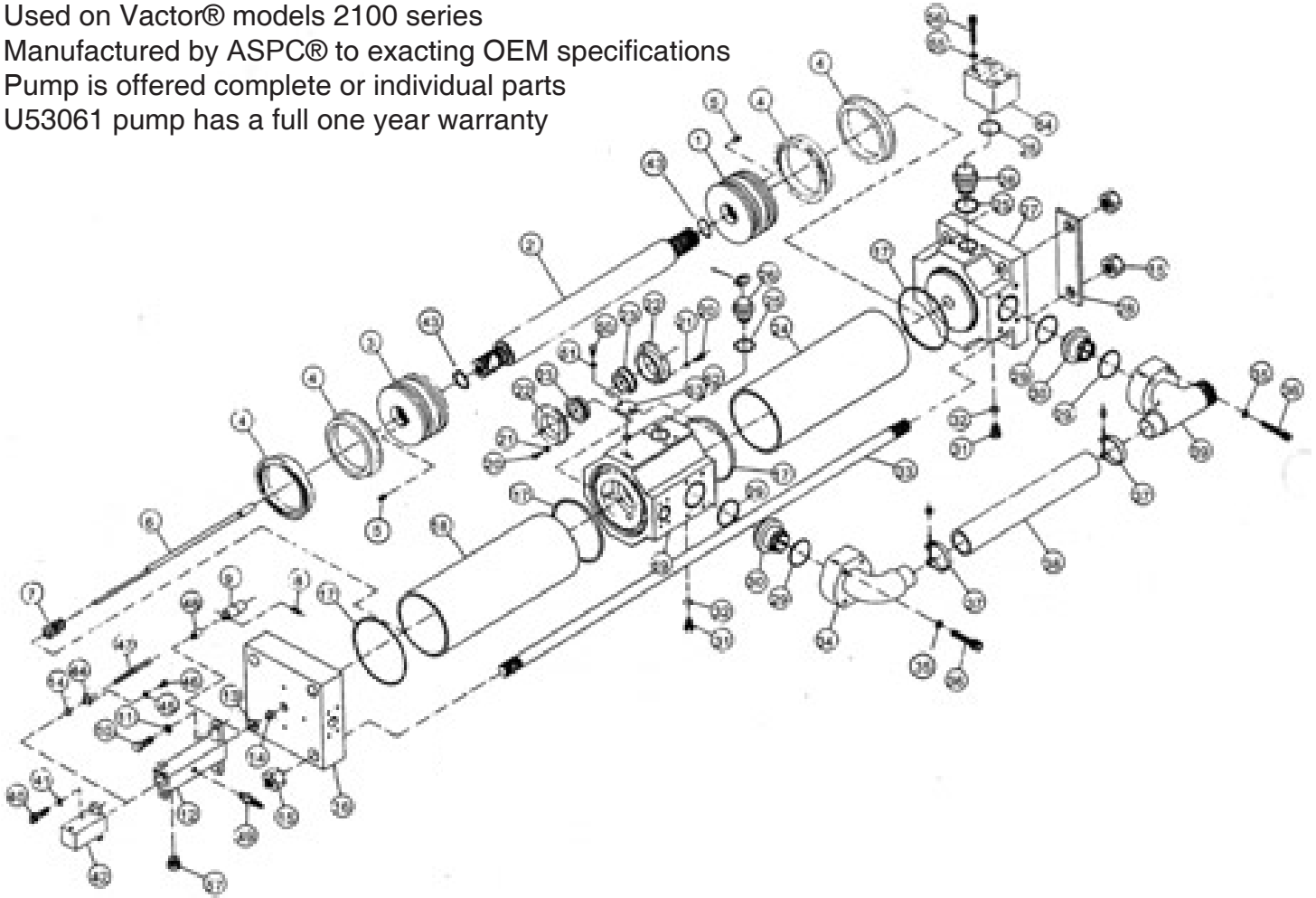
Part Number U53061

ITEM #	ASPC PART #	DESCRIPTION	QUANTITY NEEDED
		High Pressure Sewer Cleaning Pump Assembly for Vactor Units with Serial Number 81-10-1786 and NEWER Up to Model 2100 Fit late Sept. 1981 and NEWER to 1990	
	U53061**	Complete Assembly	
1	U29950	Bronze Piston Water End	1
2	U29328	Piston Rod	1
3	U39260	Piston Oil End Duct. Iron	1
4	U29638	Piston Seal	4
5	U41848	Set Screw Soc. HD	2
6	U39200	Sensing Rod	1
7	U29678	Sensing Rod Yoke	1
8	U16420W	Roll Pin	1
9	U39201	Sensing Rod Piston	1
10	U16348	Hex Hd Capscrew v1/2"x13x1 1/4"	2
11	U16366C	1/2" Lock Washer	2
12	U55870	Detent Block Assembly	1
13	U39222	Bushing Hat Type	1
14	U29662	Sensing Rod Seal	1
15	U29644	1 1/2" Hex Nut	8
16	U53066	Oil End Block	1
17	U29663	O-Ring 4	
18	U29321	Oil End Barrel	1
19	U53455	Center Block	1
20	U29841	Cap Screw	8
21	U29842	1/4" S.S. Lock Washer	8
22	U29698	Seal Keeper - Aluminum	2
23	U29664	Piston Rod Seal	2
24	U41717	Water End Barrel	1
25	U29674	O-RING 4 2" Check Valve	
26	U29385	2" Discharge Check Valve	2
27	U51600	Water End Block	1
28	U52235	Bolting Plate	2
29	U29640	O-Ring 4 3" Check Valve	
30	U29384	3" Intake Check Valve	2
31	U29826	Plug	2
32	U29827	O-Ring 2	
33	U29323	Truss Rod	4
34	U16366C	1/2" Lock Washer	8
35	U16334-I	Capscrew Soc. HD 1/2"x13x 2 1/4"	8
36	U53057	Intake Manifold Assy (Water)	1
37	U40149	3/8" Hi Col. Lock Washer	2
38	U42523	3/8" Capscrew Soc. HD	2
39	U16334-J	Capscrew Soc HD 5/8"x11x3 1/4"	8
40	U16366-D	5/8" Lockwasher	8
41	U42517	4-Way Pilot Valve	1
42	U54343	Exhaust Manifold Assembly	1
43	U29923	Piston Rod O-Ring	2
	U37495	Oil End Seal Repair Kit	
	U37496	Water End Seal Repair Kit	

VACTOR® STYLE PUMP

Part Number U62180

- Used on Vactor® models 2100 series
- Manufactured by ASPC® to exacting OEM specifications
- Pump is offered complete or individual parts
- U53061 pump has a full one year warranty



*** When ordering parts for this pump, it's helpful to know the serial number of the unit which is stamped on the identification tag located on the outside face of the fan housing cover ***

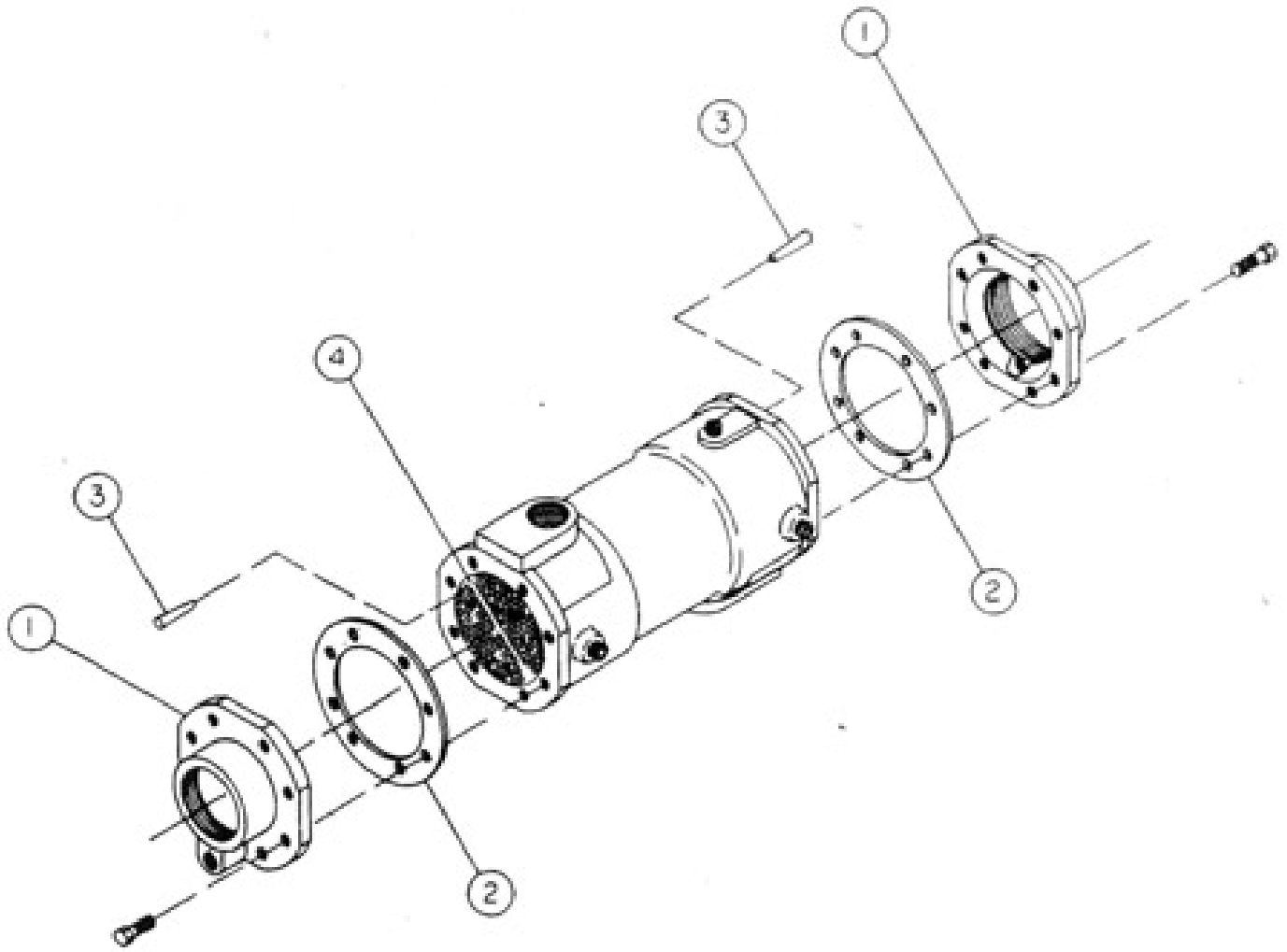
ITEM #	ASPC PART #	DESCRIPTION	QUANTITY NEEDED
High Pressure Sewer Cleaning Pump Assembly for Vactor Model 2100 Series			
	U62180	Complete Assembly	
1	U29950	Bronze Piston Water End	1
2	U29328	Piston Rod	1
3	U39260	Piston - Oil End Ductile Iron	1
4	U29638	Piston Seal	4
5	U41848	Set Screw S.S. 5/16"-24NF. X 1/2"	2
6	U39200	Sensing Rod	1
7	U29678	Sensing Rod Yoke	1
8	U16420W	Roll Pin 3/32"x3/4"	1
9	U66563**	Piston	1
10	U16348	Hex Head Capscrew 1/2"x 1 1/4"	2
11	U16367C	1/2" Lock Washer	2
12	U62449	Piston Block Weldment	1
13	U39222	Oil End Block Bushing	1

VACTOR® STYLE PUMP

Part Number U62180

ITEM #	ASPC PART #	DESCRIPTION	QUANTITY NEEDED
14	U29662	Seal	2
15	U29644	1 1/2"-12NF. Nut	8
16	U62461	Oil End Block	1
17	U29663	O-Ring 4	
18	U29321	Barrel - Oil End	1
19	U62112	Center Block	1
20	U29841	S.S. Capscrew 1/4"-20NC.x3/4"	8
21	U29842	1/4" S.S. Lock Washer	8
22	U29698	Seal Keeper - Aluminum	2
23	U29664	Piston Rod Seal	2
24	U41717	Barrel - Water End	1
25	U29674	O-Ring 4 2" Check Valve	
26	U29385	2" Check Valve	2
27	U51600	Water End Block	1
28	U52235	Bolting Plate	2
29	U29640	O-Ring 4 3" Check Valve	
30	U29384	3" Check Valve	2
31	U29826	Drain Plug	2
32	U29827	O-Ring 2	
33	U29323	Truss Rod	4
34	U62459	Intake Manifold Elbow Weldment	1
35	U40500	5/8" Hi Collar Lock Washer	8
36	U16334-J	5/8" Soc. HD Capscrew 3 1/4"	8
37	U45727	Hose Clamp	2
38	U45824C	3" Water Hose 18" long	1
39	U62460	Intake Manifold Tee Weldment	1
40	U16334C	Soc HD Capscrew 1/2"-13NC.x 1 1/2"	2
41	U40314	1/2" Hi Collar Lock Washer	1
42	U62450	Compensator Weldment	1
43	U29923	Piston Rod O-Ring	2
44	U55790	Retainer Seal	1
45	U16366L	#10 Lock Washer	3
46	U16346F	Screw 10-24x 1/2" long	3
47	U55787**	Piston Assembly - Compensator	1
48	U55784**	End Cap	1
49	U45834	Sensor	1
50	U43750	Capscrew 1/4"-20NC. X 3/4" long	2
51	U16367	1/4" Lock Washer	2
52	U62445	Port Cover	1
53	U45921	O-Ring	1
54	U62047C	High Pressure Block	1
55	U40314	1/2" Hi Collar Lock Washer	10
56	U45911A	Soc. HD Capscrew 1/2" x 4" long	1
57	U43049	Breather	1
	U37495	Oil End Seal Repair Kit	
	U37496	Water End Seal Repair Kit	

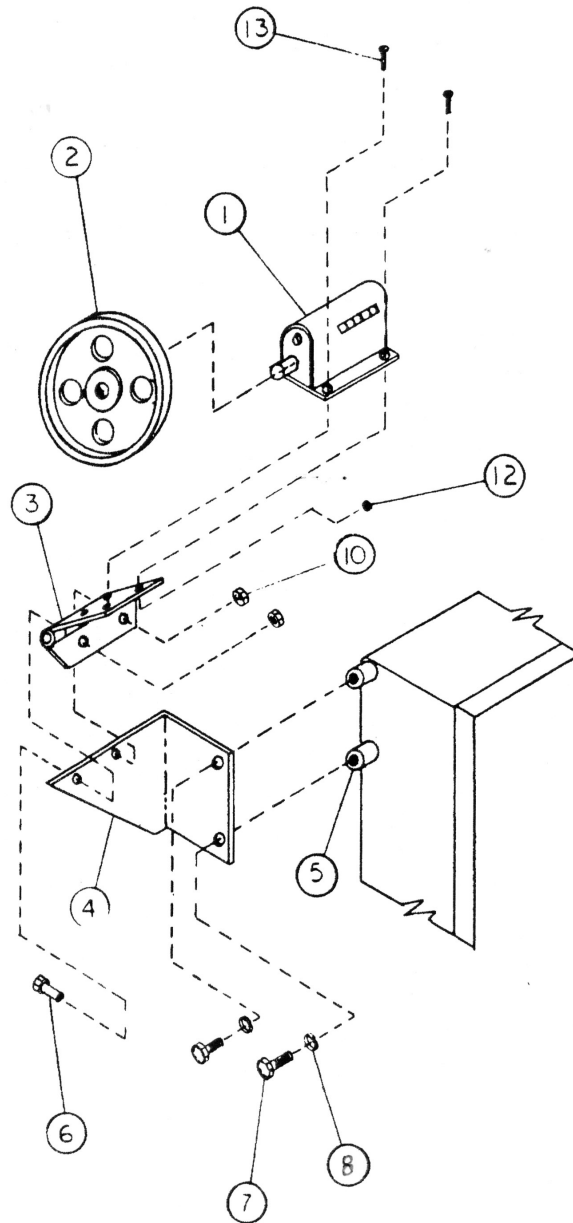
HEAT EXCHANGER



ITEM #	ASPC PART #	DESCRIPTION	QUANTITY NEEDED
Heat Exchanger			
	U44914	Complete Assembly (NPT Ports)	
1	U45248	Bonnet	2
2	U45250	Gasket	2
3	U45249	Tube Plug (2 per tube)	2
4	U45247	Core	1
	U44914B	Complete Assembly (SAE 4 Bolt)	

FOOTAGE COUNTER ASSEMBLY

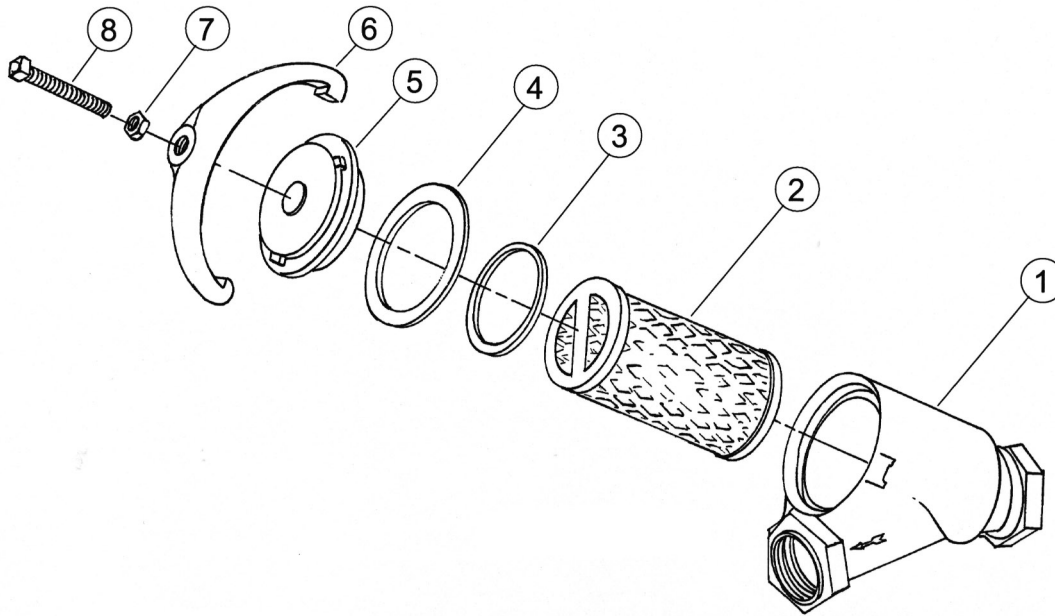
Part Number U58918



ITEM #	ASPC PART #	DESCRIPTION	QUANTITY NEEDED
		Footage Counter Assembly	
	U58918**	Complete Assembly	
1	U45047	Counter	1
2	U45046	Wheel	1
3	U45049	Hinge	1
4	U58917	Mounting Bracket	1
5	U31683	Mounting Blank	2
6	U16335	Capscrew 1/4"-21NC.x3/4" long	2
7	U16339	Capscrew 5/16"-18NCx3/4" long	2
8	U16367A	Lockwasher 5/16"	2
10	U20121G	Fiber-Loc Nut 1/4"-20NC.	2
12	U16359X	Nut #4-40	4
13	U16346O	Round Head Screw #4-40x1/4" long	4

"Y" PATTERN STRAINER 2 & 3 INCH

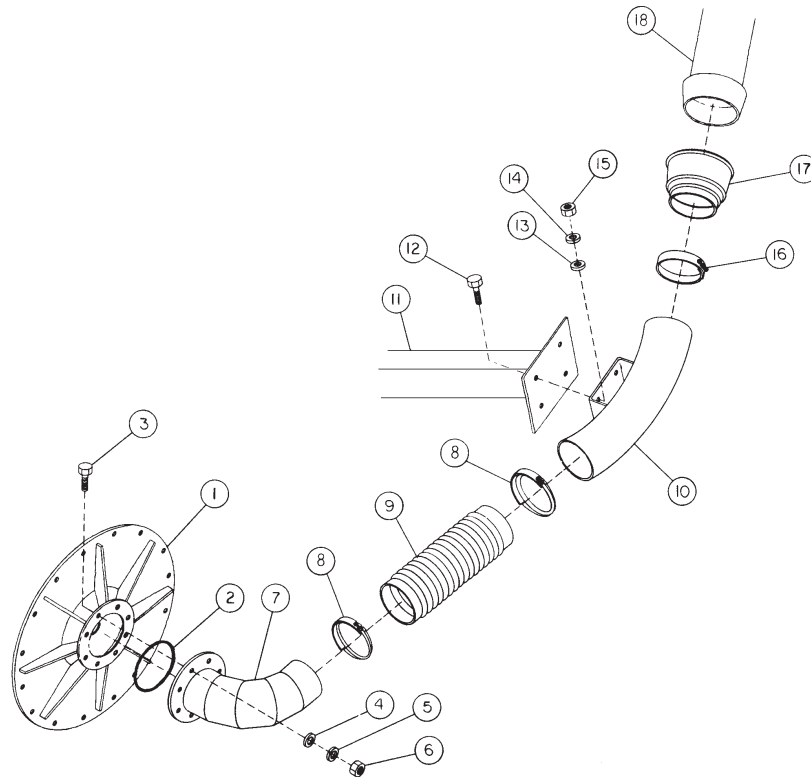
Part Number U45797 & U41279



ITEM #	ASPC PART #	DESCRIPTION	QUANTITY NEEDED
"Y" Pattern Strainer's			
	U45797	2" Complete Assembly	
1	U46134	Body Complete	1
2	U45803	2" Strainer Screen	1
3	U46137	Basket Gasket	1
4	U46138	Cap Gasket	1
5	U46136	2" Cap	1
6	U46135	2" Clamp	1
7	U46140	1/2 x 13 Jam Nut	1
8	U41274	1/2 x 13 x 23/4 Screw	1
	U41279	3" Complete Assembly	
1	U41268	Body Complete	1
2	U41280	3" Strainer Screen	1
3	U41272	Basket Gasket	1
4	U41271	Cap Gasket	1
5	U41269	3" Cap	1
6	U41270	3" Clamp	1
7	U41273	1/2 x 13 Jam Nut	1
8	U41274	1/2 x 13 x 23/4 Screw	1

FAN DUCT INTALLATION

For Model 2100



ITEM #	ASPC PART #	DESCRIPTION	QUANTITY NEEDED
		Fan Duct Installation for 2100	
	U62420	Complete Assembly	1
1		Fan Housing Cover	1
2		Silicone	1
3	U16343A	Bolt 3/8" - 16NC. X 1" lg	8
4	U16365B	Flatwasher 3/8"	8
5	U16367B	Lockwasher 3/8"	8
6	U16360B	Nut 3/8" - 16NC	8
7	U62417**	Elbow Weldment	1
8	U70406**	10" Clamp	2
9	U47394F	10" Kanaflex Hose - 16" lg	1
10	U62418**	10" Elbow Weldment	1
11		Tube Weldment	1
12	U16355D	Bolt 5/8" - 11NC. X 1-3/4" lg	4
13	U16365D	Flatwasher 5/8"	4
14	U16367-D	Lockwasher 5/8"	4
15	U16360-D	Nut 5/8" - 11NC.	4
16	U70406**	Band Clamp	1
17	U45716	Inlet Boot	1
18		Air Pipe Elbow Weldment	1

ALL Prices Subject to Change
Anytime Without Notice

11005

ASPC* Electronic Warranty Policy

All ASPC* min-camera systems have a one (1) year conditional warranty from the date of purchase. This includes internal circuitry and mechanical defects in the camera head, reel and PCU (Power Control Unit). Conditions of this warranty exclude the lighthouse dome, camera lens, lamps, video cable and any connecting cables, as these parts are considered wear and tear items.

ASPC* will be responsible for FedEx* Saver charges on warranty camera repairs to and from the customer for the first 90 days, from the date of shipment. After 90 days and up to one (1) year, ASPC* will pay FedEx* Saver freight charges back to the customer only. The customer will be responsible for freight charges to ASPC* will NOT issue "call tags" for any returns. During the first year, if the customer wants the camera shipped by any method but FedEx* Saver, the customer will be responsible for the difference in any freight charges. If the repair is made on non-warranty items, the customer will be responsible for all freight charges. (Please see Return policies)

ASPC* will not warranty any parts or labor when abuse has occurred. If our technicians determine abuse has occurred, they will contact the customer and inform them of their findings and what the parts and labor charges will be. Examples of abuse occurring would be broken or cracked circuit boards, broken fiberglass rod in the video push cable and/or obvious physical damage.

WARRANTY

ASPC* expressly disclaims any warranties including implies warranties of merchantability, fitness for a particular purpose, and ASPC* directs purchaser's attention to the fact that the purchased article may or may not be fit for the purchaser's intended use. If any defect is found in the purchased article, ASPC* will cooperate with the purchaser to assist in obtaining replacement article from manufacturer to the extent of manufacturer's warranty as given from time to time. Nothing herein shall obligate ASPC* to undertake any expense. Purchaser expressly understands that any remedy for defective goods or merchandise shall be asserted against original manufacturer. ASPC* expressly disclaims any responsibility for damage including consequential damage arising out of any defect or other implied warranty concerning the purchased good. Where ASPC* has acted as manufacturer, any asserted defect in the purchased article must be received within 15 days of delivery. In the event a notice is given to ASPC* by purchaser within said period of time, ASPC* agrees to determine whether the good is defective, and if a defect is discovered, replace same at no cost to purchaser. The replacement of the defective article shall constitute the entire extent of any warranty expressed or implied, and ASPC* expressly disclaims any responsibility for damage arising out of or due to defective merchandise to include consequential damages, foreseeable or otherwise.

Sewer Cleaning Information

When using sewer cleaning hose and mending equipment, the swage and crimp equipment, including dies and fittings, **MUST** be the same manufacturer. ASPC* disclaims any responsibility for any hose assembly not produced in conformance with above specification!

WARNING

FAILURE TO COMPLY MAY RESULT IN HOSE BURST OR COUPLING BLOWOFF WHICH MAY LEAD TO PROPERTY DAMAGE, SERIOUS INJURY OR DEATH!

"It's amazing what we can do together"