

# ALL THE HELP YOU NEED TO MAKE YOUR DREAM KITCHEN A REALITY

At IKEA we believe everyone has the right to a new kitchen. Apart from offering a wide range of kitchens, we also offer a wide range of services that include measuring, planning and installation. Everything you need to make getting your dream kitchen as easy as possible. At your local IKEA store you'll find our team of kitchen experts who are always on hand to answer questions, give practical advice and help you through the buying process.



## MEASURING SERVICE

Have an experienced professional from an Independent Service Provider come to your home and take all of the essential measurements and notes. Prices start from **\$49**. When you buy an IKEA Kitchen it costs you nothing - your measurement service fee is refunded to you.



## INDIVIDUAL KITCHEN PLANNING

A professional kitchen planner from an Independent Service Provider will visit your home for up to 4 hours to give you a detailed layout of your kitchen, individual cabinets, appliances and countertops.



## INSTALLATION PRICE QUOTE

Upon completion of your kitchen plan, an experienced kitchen remodeling professional from an Independent Service Provider will visit your home to discuss the scope of work, price and timeline for installation.



## INSTALLATION SERVICE

Save time and effort with professional installation provided by an Independent Service Provider. **Read more on page 35.**

© Inter IKEA Systems B.V. 2015

## Buying guide

# countertops, sinks & faucets

All the products shown may not be available at the store. Please contact the staff or visit [IKEA-USA.com](http://IKEA-USA.com) for more information. For more detailed product information, see the price tag and the internet. All units require assembly.



# GET THE RIGHT COUNTERTOP, SINK AND FAUCET FOR YOUR KITCHEN

This guide contains pricing, sizing and product information to help you choose a countertop, sink and faucet that are right for your kitchen. You'll also find information on our kitchen services, like installation, and other tools designed to help you make your dream kitchen a reality.

### Style

We've got a range of colors and styles to choose from, so whether you've got a taste for the traditional, are a modern trend setter or land somewhere in between, you'll find something that's just right.

### Function

A beautiful kitchen is one that works for you. We all have different kitchen habits so you'll find a variety of functions offered by our kitchen products.

### Services

You can do it all yourself, but you don't have to. We can help from planning and measuring to ordering and installing. See p. 35 for details about our services.

### Quality

All of our kitchen products are quality tested to ensure they'll stand up to years of use. All you have to do is decide on the style and functions that are right for you. See p. 32 for details about our limited kitchen warranty.

**25**  
Year Limited  
Warranty  
INCLUDED

All sinks (except FYNDIG) are included in our 25-year limited warranty.

All countertops (except PERSONLIG and LILLTRÄSK) have a free 25-year limited warranty. Additional limited warranty information can be found on p. 32.



## COUNTERTOPS/ 4



## SINKS/ 16



## SINK ACCESSORIES/ 22



## TABLE OF CONTENTS

- Countertops ..... 4-15
- Sinks ..... 16-21
- Sink accessories ..... 22
- Faucets ..... 24-29
- Countertop price and size charts ..... 30
- Warranty information ..... 32
- PERSONLIG terms and conditions ..... 33
- Services ..... 35

## FAUCETS/ 24





## COUNTERTOPS

Our countertops are available custom-made or pre-cut and come in several materials, each with its own benefits and style.

All our countertops are rigorously tested and come with a limited warranty. Whichever countertop you choose, you can be sure it will stand up to everyday life in your kitchen for years to come.

**Pre-cut countertops** come in a variety of lengths, depths and thicknesses and are ready to take home today. They're ideal for a straight-line kitchen (max. 96") or if you're going to install the countertop yourself. Just remember you need to cut holes for the cooktop, sink and faucet. Available in: laminate, wood, solid wood.

**Custom countertops**, called PERSONLIG, let you create a kitchen that's perfect for your space. You can order the exact length and depth you need, as well as bar solutions, rounded corners and holes for the sink, faucets and appliances. You can also choose an under-mounted or a top-mounted sink. Available in: acrylic, quartz.

### Built to last

When we test our countertops we put them up against everything they'll face in your kitchen - liquids, oil, steam, heat, thumps, bumps and scratches. Once we're done we're so sure our countertops will last, we warranty it.

**25**  
Year Limited  
Warranty  
INCLUDED

All countertops (except PERSONLIG and LILLTRÄSK) have a free 25-year limited warranty. Additional limited warranty information can be found on p. 32.



**LAMINATE** Durable, affordable and maintenance-free, these countertops are resistant to scratches and stains. They come in many colors to choose from. Available pre-cut.



**QUARTZ** Made of natural quartz, one of the hardest materials in nature and high-quality polymer resins for a smooth surface. Each countertop is extremely durable and beautifully unique. Available custom-made.



**ACRYLIC** These custom countertops are durable and easy to clean. With acrylic there are multiple sink mounting options. See store for specific details. Available custom-made.



**WOOD** The natural color and grain of wood adds warmth to your kitchen decor. Cleaning and care are easy too—scratches or nicks can simply be sanded out. Available pre-cut.

## LAMINATE COUNTERTOPS pre-cut

Our pre-cut laminate countertops are durable and affordable. They're resistant to scratches and stains and are maintenance free. They come in a range of predetermined combinations of length, depth and thickness as well as a variety of combinations of color, edge color and edge shape.

### Good to know

Clean using a soft cloth or sponge and warm water with a mild, non-abrasive detergent. Avoid furniture polish and strong cleaning agents. Scratches and stains are more visible on darker colored and high-gloss countertops so they require more frequent care.



All countertops (except PERSONLIG and LILLTRÄSK) have a free 25-year limited warranty. Additional limited warranty information can be found on p. 32.

## 1 1/8" — ROUNDED EDGE

Countertops with rounded edges create a more traditional look and a softer, warmer feel in your kitchen.



**LILLTRÄSK White.**  
L74xD25%". 502.808.28 **\$34**  
L98xD25%". 302.808.29 **\$39**

## 1 1/8" — STRAIGHT EDGE

This thinner countertop with straight edges creates a lighter, more modern feel. Edges in a different color create an exciting contrast.



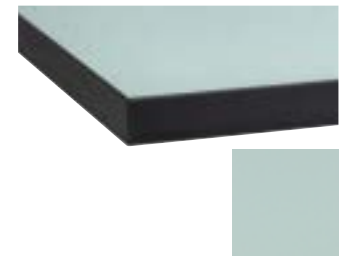
**BERGSTENA White with wood effect edge. Double-sided.**  
L74xD25%". 902.748.73 **\$89**  
L98xD25%". 402.748.80 **\$109**



**BERGSTENA Dark gray with wood effect edge. Double-sided.**  
L74xD25%". 902.748.73 **\$89**  
L98xD25%". 402.748.80 **\$109**



**EKBACKEN Brown-black with brown-black edge. Double-sided.**  
L74xD25%". 302.748.66 **\$79**  
L98xD25%". 402.748.75 **\$99**



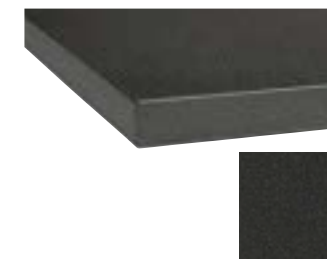
**EKBACKEN Light turquoise with brown-black edge. Double-sided.**  
L74xD25%". 302.748.66 **\$79**  
L98xD25%". 402.748.75 **\$99**



**EKBACKEN Light gray with white edge. Double-sided.**  
L74xD25%". 002.913.39 **\$79**  
L98xD25%". 602.913.41 **\$99**



**EKBACKEN White with white edge. Double-sided.**  
L74xD25%". 002.913.39 **\$79**  
L98xD25%". 602.913.41 **\$99**



**EKBACKEN Black stone effect.**  
L74xD25%". 202.748.62 **\$79**  
L98xD25%". 802.748.64 **\$99**



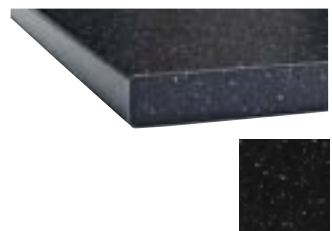
**EKBACKEN Dark oak effect.**  
L74xD25%". 402.752.19 **\$79**  
L98xD25%". 602.752.23 **\$99**



**EKBACKEN Light oak effect.**  
L74xD25%". 402.752.24 **\$79**  
L98xD25%". 602.752.18 **\$99**

## 1½" — ROUNDED EDGE

Countertops with rounded edges create a more traditional look and a softer, warmer feel in your kitchen.



**SÄLJAN Black mineral effect.**  
L74×D25½". 602.749.83 **\$59**  
L98×D25½". 102.749.85 **\$69**



**SÄLJAN White.**  
L74×D25½". 102.643.78 **\$59**  
L98×D25½". 002.644.06 **\$69**



**SÄLJAN Walnut effect.**  
L74×D25½". 302.643.77 **\$59**  
L98×D25½". 202.644.05 **\$69**



**SÄLJAN White stone effect.**  
L74×D25½". 102.766.11 **\$59**  
L98×D25½". 902.766.12 **\$69**

## 1½" — STRAIGHT EDGE

Countertops with straight edges add a modern touch to the kitchen. Create exciting contrast with an aluminum edging strip.



**HÄLLESTAD White with metal effect edge.**  
**Double-sided.**  
L74×D25½". 702.643.61 **\$89**  
L98×D25½". 602.643.66 **\$109**



**HÄLLESTAD Aluminum effect with metal effect edge.**  
**Double-sided.**  
L74×D25½". 702.643.61 **\$89**  
L98×D25½". 602.643.66 **\$109**

## SOLID WOOD COUNTERTOPS pre-cut



All of our pre-cut solid wood countertops are available in beech, birch and oak. Whichever wood you choose, you'll get a unique and durable work surface that, with a little care, will age gracefully.

All of our pre-cut solid wood countertops are 1½" thick.

**Beech** is a hard wood with an even grain. It's durable and often used for furniture and countertops. When exposed to sunlight, beech ages from a light red tone to a more rose-brown color.

**Birch** is fine-grained and pale in color with a satin-like sheen that darkens with age. It often has knots or heartwood in cream or light brown which will give your countertop a unique and distinct natural look.

1½" HAMMARP is available in oak, beech and birch.



**HAMMARP Oak.**  
L74×D25½". 202.749.61 **\$139**  
L98×D25½". 602.749.64 **\$189**



**HAMMARP Beech.**  
L74×D25½". 602.749.59 **\$129**  
L98×D25½". 002.749.62 **\$169**



**HAMMARP Birch.**  
L74×D25½". 402.749.60 **\$129**  
L98×D25½". 802.749.63 **\$169**



**BEHANDLA wood treatment oil \$6.99**  
For indoor use. 25oz. 500.703.78  
Paintbrush sold separately

**Oak** is a very hard wood, making it a popular choice for countertops and interiors. Its color ranges from light brown to a rich reddish-brown and it darkens with age.

### Good to know

We pretreat all our solid wood countertops to give them a good start at life in your kitchen, but they require occasional care to keep them in good condition.

To restore the countertop surface and protect it from stains, apply a wood treatment oil (like BEHANDLA) 3-5 times a year. Areas where the countertop may dry out, such as around the sink and cooktop, should be treated more often.

For daily cleaning use a moist cloth or sponge and some mild detergent and wipe to dry.



### WOOD COUNTERTOPS pre-cut

Our wood countertops have the same look and feel as our solid wood countertops, but require less frequent care.

They are pretreated with hard wax oil and no other treatment is necessary until the surface starts to wear.

They're made of particleboard covered with a layer of solid wood, a hardwearing natural material that can

be sanded and treated when needed. It's also better for the environment because we use less wood in the production process.



#### Better for the environment

We maximized the benefits and minimized the use of solid wood by using a top layer of oak over particleboard, making sure we use resources carefully.

### 1½" KARLBY

KARLBY is available in oak, beech, birch and walnut. Two edging strips are included so you can finish the edges if you make your own cuts.



**KARLBY Oak.**  
L74xD25%. 702.679.77 **\$99**  
L98xD25%. 502.679.78 **\$139**



**KARLBY Beech.**  
L74xD25%. 802.751.37 **\$99**  
L98xD25%. 402.751.39 **\$139**



**KARLBY Birch.**  
L74xD25%. 602.751.38 **\$99**  
L98xD25%. 202.751.40 **\$139**



**KARLBY Walnut.**  
L74xD25%. 303.011.48 **\$129**  
L98xD25%. 103.011.49 **\$189**

### 1½" MÖLLEKULLA

The full plank design of MÖLLEKULLA gives an authentic plank expression with a genuine wood feeling. Every countertop is unique, boasting varying grain patterns and natural color shifts that are part of the charm of wood. The countertop's plank expression is enhanced by the design on the edges. Two edging strips are included so you can finish the edges if you make your own cuts.



**MÖLLEKULLA Oak.**  
L74xD25%. 003.011.35 **\$149**  
L98xD25%. 803.011.36 **\$199**

#### Caring for your wood countertop

You don't need to treat KARLBY or MÖLLEKULLA as often as a solid wood countertop, but when the surface of the countertop starts to wear or become dry, treat it with wood treatment oil. For daily cleaning, use a soft cloth or sponge and warm water with a mild, nonabrasive detergent and wipe to dry. Avoid furniture polish and strong cleaning agents.

**BEHANDLA wood treatment oil \$6.99**  
For indoor use. 25oz. 500.703.78  
Paintbrush sold separately



## ACRYLIC COUNTERTOPS custom-made / PRICES ON PAGE 30



Our acrylic countertops are built to your exact dimensions. They are resistant to heat, water and sunlight. This makes them a durable, low maintenance option you can rely on for years to come.

With acrylic, you have the unique option of choosing a fully integrated sink, a very distinct design element or an under-mounted sink.

You can also order acrylic backsplashes to compliment your countertop.

### Good to know

Acrylic countertops are durable, stain-resistant, heat-resistant, scratch-resistant and repairable if damage does occur. Its smooth, non-porous surface is simple to keep clean — just use warm water and a mild, nonabrasive detergent.

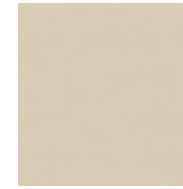
### How to buy a PERSONLIG (custom-made) countertop

1. Choose a color.
2. Choose an edge style.
3. Choose the sink you want to have with your countertop. It can be an under-mounted, top-mounted or integrated sink.
4. Estimate the cost by measuring your kitchen. See p. 31 for step by step instructions.
5. See an IKEA co-worker in the Kitchen department at your local IKEA store to place your order.

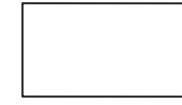
1½" (3 cm)

This color is available in one edge style.

Price level 0



Ivory



Eased Edge

These colors are available in four edge styles.

Price level 1



Neo White



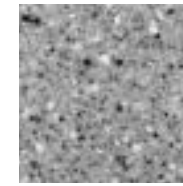
Silverstone



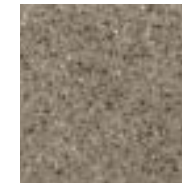
Alaska

These colors are available in four edge styles.

Price level 2



H-Cloudy

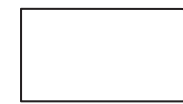


Amber



Eclipse

Available edge styles:



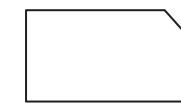
Eased Edge



Bullnose



Half Bullnose



Bevel

QUARTZ COUNTERTOPS custom-made /PRICES ON PAGE 30



When you choose a quartz countertop you get a work surface that's extremely durable.

We construct our quartz countertops with natural quartz crystals and high quality polymer resins. Using one of the hardest materials in nature makes the surface smooth, non-porous and easy to keep clean.

You can also order quartz backsplashes to compliment your countertop.

**Good to know**

Clean using a soft cloth or sponge and warm water with a mild, nonabrasive detergent. Avoid using scouring products.

**How to buy a PERSONLIG (custom-made) countertop**

1. Choose a color.
2. Choose an edge style.
3. Choose the sink you want to have with your countertop. It can be an under-mounted or top-mounted sink.
4. Estimate the cost by measuring your kitchen. See p. 30 for step by step instructions.
5. Visit an IKEA co-worker in the Kitchen department at your local IKEA store to place your order.

3/4" (2 cm)

This color is available in one edge style.  
Price level 0



1. Iceberg

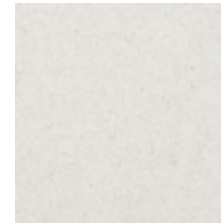


Eased edge

1 1/2" (3 cm)

These colors are available in four edge styles.

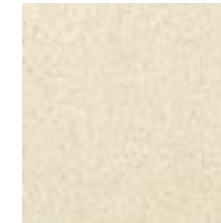
Price level 1 - numbers 2-11. Price level 2 - numbers 12-24. Price level 3 - numbers 25-29.



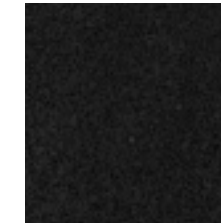
2. Blizzard



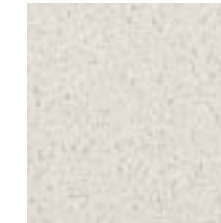
3. Linen



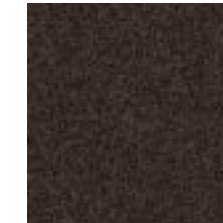
4. Sandy Beach



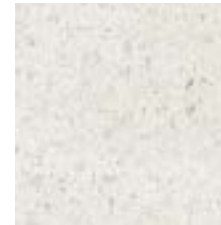
5. Jet Black



6. Eggshell



7. Espresso



8. Ocean Foam



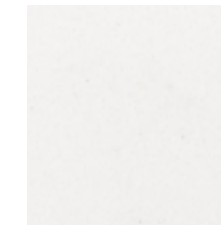
9. Nougat



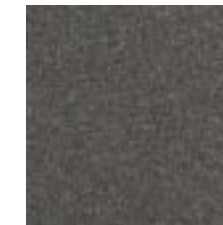
10. Almond Rocca



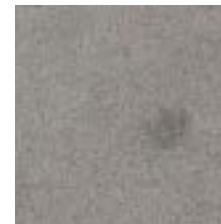
11. Oyster



12. Pure White



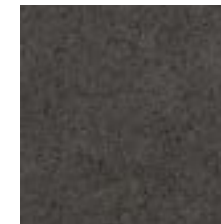
13. Concrete



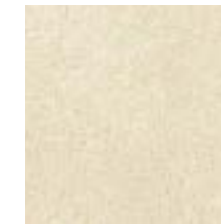
14. Pebble/Stone Gray



15. Belgian Moon



16. Raven



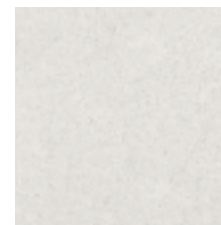
17. Buttermilk



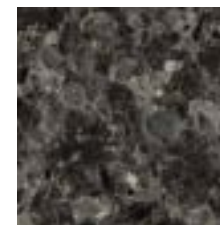
18. Ginger



19. Wild Rice



20. Organic White



21. Wild Rocks



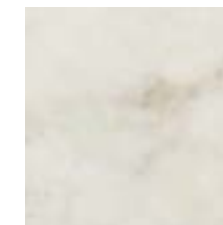
22. Atlantic Salt



23. Chocolate Truffle



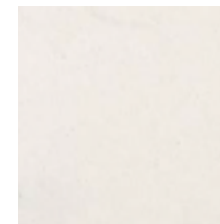
24. Shiitake



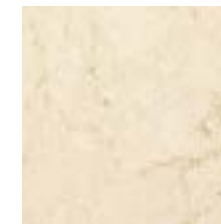
25. London Gray



26. Pietra Gray



27. Frosty Carrina

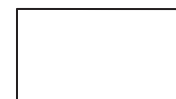


28. Dreamy Marfil



29. Emperadoro

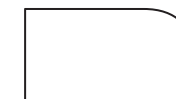
Available edge styles:



Eased edge



Bullnose



Half Bullnose



Bevel

For pricing information see page 30. For limited warranty information see page 32.



## SINKS

Our range of sinks gives you many styles and functions to choose from. You'll find options available in stainless steel, quartz composite, and ceramic. Some of our sinks can even be under-mounted with a PERSONLIG custom-made countertop.

Before choosing a sink, think about the workflow of your kitchen and the types of tasks you often do. Whether it's a lot of food prep, hand washing glassware, or just giving your plates a quick rinse before the dishwasher, we have a sink to suit your needs.

Most of our sinks are reversible, you can choose how to install them. If you choose an asymmetrical double bowl sink, you can have the larger bowl on the left or right.

### Built to last

We rigorously test our sinks to ensure they can withstand the demands of everyday life in the kitchen. That's why all of our sinks come with a 25-year limited warranty.

**25**  
Year Limited  
Warranty  
INCLUDED

All sinks (except FYNDIG) are included in our 25-year limited warranty. Additional limited warranty information can be found on p. 32.



**TOP-MOUNTED SINK** You can install top-mount sinks yourself and decide exactly where the faucet should go because there's no pre-drilled hole.



**BLACK QUARTZ COMPOSITE** The distinct design of a black quartz composite sink can give your kitchen a whole new look. They're extremely durable, resistant to heat, stains and mold.



**UNDER-MOUNTED SINK** Offered with our PERSONLIG custom-made countertops, these sinks create an uninterrupted look and make cleaning your countertop easy.



**APRON SINK** This style differs from our other sinks because it doesn't require that you cut a hole in your countertop. Instead, it fits between countertop pieces.

## SINKS

Available in several shapes and styles. A hole will need to be cut into the countertop prior to installing the sink. Select sinks can be under-mounted, see store for specific details.



**1. FYNDIG insert sink 1 bowl \$19.99**  
Fits cabinet frames minimum 24" wide. Stainless steel.  
L17¾×D15¾×H5⅞". 702.021.32



**2. FYNDIG insert sink 1 bowl with drainer \$39.99**  
Fits cabinet frames minimum 24" wide. Stainless steel.  
L28×D20×H6". 702.021.27



**7. BOHOLMEN insert sink 1 bowl with drainer \$79**  
Fits cabinet frames minimum 24" wide. Stainless steel.  
L27½×D19¾×H7⅞". 401.157.30



**8. BOHOLMEN insert sink 1 bowl with drainer \$139**  
Fits cabinet frames minimum 24" wide. Stainless steel.  
L37¾×D19¾×H7⅞". 201.157.31



**3. EMSEN double bowl corner sink \$139**  
Fits corner base cabinet frame 38×38". Stainless steel.  
L33½×D33½×H7⅞". 400.386.90



**4. BOHOLMEN insert sink 1 bowl \$39.99**  
Fits cabinet frames minimum 24" wide. Stainless steel.  
Ø17¾, H6". 902.134.79



**9. BOHOLMEN insert sink 1 1/2 bowls \$119**  
Fits cabinet frames minimum 30" wide. Stainless steel.  
L23¾×D19¾×H7⅞". 101.151.28



**10. BOHOLMEN insert sink 1 1/2 bowls with drainer \$129**  
Fits cabinet frames minimum 30" wide. Stainless steel.  
L35¾×D19¾×H7⅞". 901.151.29



**5. BOHOLMEN insert sink 2 bowls \$129**  
Fits cabinet frames minimum 36" wide. Stainless steel.  
L30¾×D19¾×H7⅞". 502.225.17



**6. BOHOLMEN insert sink 1 bowl \$99**  
Fits cabinet frames minimum 24" wide. Stainless steel.  
L22×D21¾×H7⅞". 002.021.16



**11. BOHOLMEN insert sink 2 bowls \$149**  
Fits cabinet frames minimum 36" wide. Stainless steel.  
L30¾×D19¾×H7⅞". 501.151.31



**12. BOHOLMEN insert sink 2 bowls with drainer \$189**  
Fits cabinet frames minimum 36" wide. Stainless steel.  
L49¼×D19¾×H7⅞". 701.151.30

Most of our sinks don't have pre-drilled holes for a faucet, which means you can choose exactly the faucet you want and where you want it. You can cut the hole yourself with the FIXA kit (see p. 23). This also allows you to reverse the sink, placing the drain board on the side the best suits your kitchen layout.





**13. BREDSKÄR insert sink 1 bowl \$249**  
Fits cabinet frames minimum 24" wide. Stainless steel. L20½×D18⅞×H7⅞". 001.604.61



**14. BREDSKÄR insert sink 1 bowl \$299**  
Fits cabinet frames minimum 30" wide. Stainless steel. L24¾×D18⅞×H7⅞". 501.845.77



**15. BREDSKÄR insert sink 1 1/2 bowls \$399**  
Fits cabinet frames minimum 36" wide. Stainless steel. L30⅞×D18⅞×H7⅞". 502.254.98



**16. HÄLLVIKEN insert sink 1 bowl \$199** Fits cabinet frames minimum 30" wide. Has a pre-drilled hole for a kitchen faucet. Quartz composite. L22×D19⅞×H7⅞". 902.574.73



**17. DOMSJÖ insert sink 1 bowl \$99** Fits cabinet frames minimum 24" wide. White color-glazed ceramic. L20⅞×D17¾×H7⅞". 000.446.45

## APRON SINKS

These sinks span the full width of the base cabinet, therefore it's not necessary to cut a hole to install them.



**18. DOMSJÖ sink 1 bowl \$179** Fits cabinet frames minimum 24" wide. Has a pre-drilled hole for a kitchen faucet. Fits together with countertop thicknesses minimum 1½". White color-glazed ceramic. L25×D27×H9⅞". 302.731.12



**19. DOMSJÖ sink 2 bowls \$299** Fits cabinet frames minimum 36" wide. Has a pre-drilled hole for a kitchen faucet. Fits together with countertop thicknesses minimum 1½". White color-glazed ceramic. L37×D27⅞×H9⅞". 502.731.11

ATLANT strainer sold separately. See p. 23



## ACCESSORIES FOR SINKS

Get the most out of your sink with accessories designed to fit. They are particularly useful when you're short on countertop space or often wash the dishes by hand.



### BOHOLMEN colander.

Fits in the bowl of all BOHOLMEN sinks for easy rinsing. The colander is designed to rest on the edges of the sink bowl. Can be used as a colander for rinsing vegetables, salad etc. and for pouring hot water from a pasta pot. The colander has a hole at the end, so it can be hung on a rail like GRUNDTAL for example. Polypropylene plastic. Black.

L17¼×W5⅞×H3⅞".

302.025.44 **\$2.99**



### BOHOLMEN chopping board.

Fits in the bowl of all BOHOLMEN sinks. To be placed on top of the bowl; provides extra work space on the sink. The chopping board has grooves that collect bread crumbs so they don't stick to the bread when you slice. Reversible. Polypropylene plastic. Black.

L17¼×W7¾". Thickness ½".

702.025.42 **\$5.99**



### BOHOLMEN washing bowl.

Fits in the bowl of all BOHOLMEN sinks. Makes washing easier if you have one single bowl sink. Polyethylene plastic. Black.

L16×W9×H6¾".

502.025.38 **\$9.99**



### BOHOLMEN chopping board.

Fits in the bowl of all BOHOLMEN sinks. To be placed on top of the bowl; provides extra work space on the sink. The chopping board has grooves that collect bread crumbs so they don't stick to the bread when you slice. Reversible. Polypropylene plastic. Black.

L17¾×W15". Thickness ½".

002.025.45 **\$9.99**



**BOHOLMEN washing bowl and rinsing basket.** Fits in the bowl of all sinks in the BOHOLMEN series. White. L8⅞×W7½×H7½".

602.085.25 **\$14.99**



### BOHOLMEN dish drainer/ basket.

Fits in the bowl of all BOHOLMEN sinks as well as BOHOLMEN washing bowls. You can attach the cutlery basket to the dish drainer or hang it on GRUNDTAL rail. Basket: ABS plastic. Dish drainer: polypropylene plastic. Black/white.

L14½×W8¼×H5½".

102.085.23 **\$7.99**



### BREDSKÄR chopping board.

Fits in the bowl of all BREDSKÄR sinks. To be placed on top of the bowl; provides extra work space on the sink. Durable wooden surface which spares the knife edge. Solid wood; a hard wearing natural material that can be sanded and surface treated if required. Oiled, solid oak.

L17¾×W16½". Thickness ¾".

302.021.10 **\$19.99**



### DOMSJÖ chopping board.

Fits in the bowl of all DOMSJÖ sinks. To be placed on top of the bowl; provides extra work space on the sink. Durable wooden surface which spares the knife edge. Solid wood; a hard wearing natural material that can be sanded and surface treated if required. Oiled, solid beech.

L20½×W11½". Thickness 1".

002.673.39 **\$17.99**



### DOMSJÖ colander.

Fits the bowl of all DOMSJÖ sinks. The colander is designed to rest on the edges of the sink bowl. Can be used as a colander for rinsing vegetables, salad etc. and for pouring hot water from a pasta pot.

L20¾×W7⅞×H2".

202.673.38 **\$26.99**



### BREDSKÄR colander.

Fits in the bowl of all BREDSKÄR sinks. To be placed on top of the bowl; provides extra work space on the sink. Can be used as a colander for rinsing vegetables, salad etc. and for pouring hot water from a pasta pot. Base material: Stainless steel. Edge: Synthetic rubber.

L16½×W7½×H3½".

702.021.13 **\$24.99**



### RINGSKÄR detergent dispenser.

To be mounted to the sink or countertop in order to always have washing detergent within easy reach. Can be refilled from above. Container: Polyethylene plastic. Dispenser: Chrome-plated brass.

H2⅞".

501.372.89 **\$14.99**

## SINK STRAINER AND TOOLS FOR SINKS

We have tools and the extra bits and pieces you need to help you complete your sink installation.



### ATLANT sink strainer.

Synthetic rubber seal. Strainer/strainer basket in stainless steel. Tubes in polypropylene.

900.560.21 **\$6.99**



### FIXA 2-piece tool set.

Makes it easy to cut out a hole for a faucet in a stainless steel sink unit. Sinks in stainless steel do not come with pre-drilled holes. Punch for faucet, hole diameter 1¼". Can also be used for cutting copper pipes.

285.121.00 **\$12.99**



## FAUCETS

Our faucets are designed to fit your sink and suit your kitchen needs. You'll find a variety of styles to choose from so you can be sure to get the look you want and the function you need.

All our faucets are equipped with a water saving aerator that, by mixing air into the flow, maintains water pressure but reduces water use by up to 40%.

All our faucets are tested and certified to the requirements of California Lead Plumbing Law, CSA/IAPMO and NSF/ANSI 61.

### Built to last

Everyday life at home puts high demands on kitchen faucets. To ensure all our kitchen faucets comply with our strict standards for quality and durability they are all carefully tested and approved by an independent institute. This means we can offer you a 10-year limited warranty on all our faucets.

**10**  
Year Limited  
Warranty  
INCLUDED

Our kitchen faucets (except LAGAN) are included in our 10-year limited warranty. Additional limited warranty information can be found on p. 32.



**HIGH SPOUT** If you wash large pots by hand or do a lot of food prep at the sink, a high spout is very handy.



**HANDSPRAY** Washing and rinsing are easier to do with a detachable handspray option. You can even choose between two water spray functions.



**MODERN DESIGN** An angular faucet with a chrome finish will add an instant flare of modern style to your kitchen decor.



**A TRADITIONAL TOUCH** Complete a traditional looking kitchen with a faucet like this to really get a style boost.

## KITCHEN FAUCETS

Our faucets are designed to fit your sink and your kitchen. We have a variety to choose from so you can find one that suits your style and kitchen needs. Single lever faucets are easy to use with one hand. A faucet with a high spout is perfect for washing big pots or large dishes. We have faucets with pull-out spouts too, which work great for rinsing ingredients and directing the flow exactly where you want. All our faucets have a water-saving function, reducing your water consumption by up to 40%.



**1. LAGAN kitchen faucet.**  
Swivel spout 360°. H6¼".  
Chrome-plated 700.850.29 **\$19.99**



**2. SUNDSVIK kitchen faucet.**  
Swivel spout 360°. H6¼".  
Chrome-plated 702.705.07 **\$39.99**



**3. HJ UVIK kitchen faucet with handspray.** Double functions; use the handle to switch between a water stream and a handspray. Equipped with check valve to prevent back flow. Wall fastener included. Clear lacquered, brushed nickel-plated brass. Swivel spout 360°. H21⅝".  
Stainless steel color 102.578.96 **\$229**



**7. ALESKÅR kitchen faucet with handspray.** Handspray which facilitates rinsing of dishes. Double functions; use the handle to switch between a concentrated water stream and a handspray. Swivel spout 120°. H17¼".  
Chrome-plated/black 602.579.45 **\$279**



**8. EDSVIK kitchen faucet.** Dual control. Swivel spout 360°. H11¾".  
Chrome-plated 700.546.50 **\$49.99**



**4. BUDSKÅR kitchen faucet.**  
Swivel spout 360°. H10¼".  
Chrome-plated 302.226.17 **\$199**



**5. GLITTRAN kitchen faucet.** Chrome-plated brass. Swivel spout 360°. H11".  
Chrome-plated 602.226.25 **\$119**



**6. GLITTRAN kitchen faucet.** Powder coated brass. Swivel spout 360°. H11".  
Black 102.256.12 **\$119**



**9. ELVERDAM kitchen faucet.** Clear lacquered, brushed nickel-plated brass. Swivel spout is preset to 160° but can be changed to 90°. H15¾".  
Stainless steel color 402.115.76 **\$149**



**10. ELVERDAM kitchen faucet with pull-out spout.** Pulls out to facilitate rinsing of dishes. A counterweight makes the hose easily retract back into the kitchen mixer faucet. Clear lacquered, brushed nickel-plated brass. Swivel spout 160°. H15¾".  
Stainless steel color 401.133.83 **\$179**





**11. RINGSKÄR kitchen faucet.**  
Swivel spout is preset to 360° but can be changed to 90° or 120°. H15".  
Stainless steel color 201.315.52 **\$129**



**12. RINGSKÄR kitchen faucet.**  
Swivel spout is preset to 360° but can be changed to 90° or 120°. H15".  
Chrome-plated 301.285.92 **\$129**



**13. RINGSKÄR kitchen faucet.**  
Swivel spout is preset to 360° but can be changed to 90° or 120°. H15".  
White 001.405.81 **\$129**



**14. RINGSKÄR kitchen faucet with pull-out spout.**  
Pulls out to facilitate rinsing of dishes. A counterweight makes the hose easily retract back into the kitchen faucet. Clear lacquered, brushed nickel-plated brass with stainless steel color. Swivel spout 180°. H16½".  
Stainless steel color 401.764.36 **\$159**

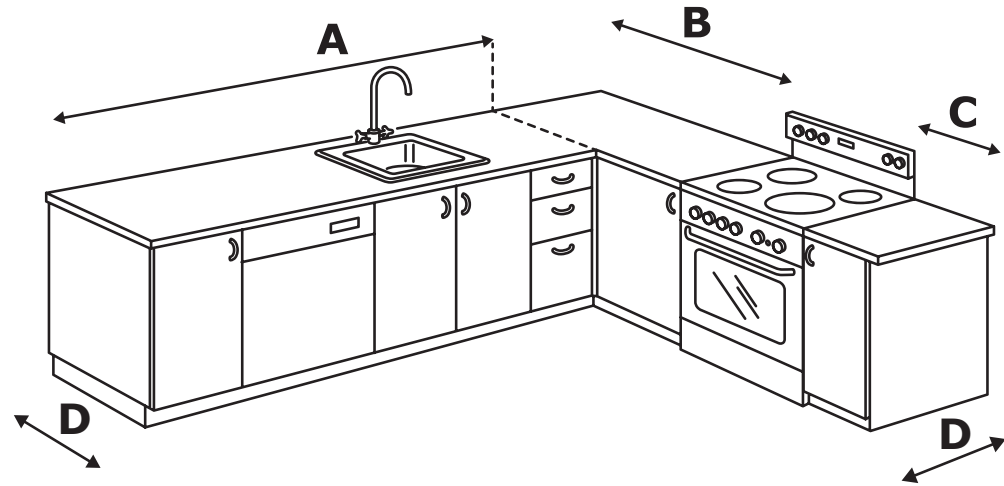


**15. SANDSJÖN kitchen faucet.** Swivel spout is preset to 360°. H13½".  
Chrome-plated 702.818.22 **\$99**



## HOW TO ESTIMATE THE COST OF YOUR PERSONLIG ACRYLIC AND QUARTZ COUNTERTOP

Measure the length and width of each section of countertop, multiply these numbers together. Add the section measurements together to get the total amount of countertop sq. ft. for your kitchen. Multiply this total by the price of your desired countertop per square foot. This will equal the total cost.



$$(A \times D) + (B \times D) + (C \times D) = X \text{ sq.ft.}$$

$$X \text{ sq.ft.} \times \$X/\text{sq.ft.} = \text{total price}$$

Available edge styles:



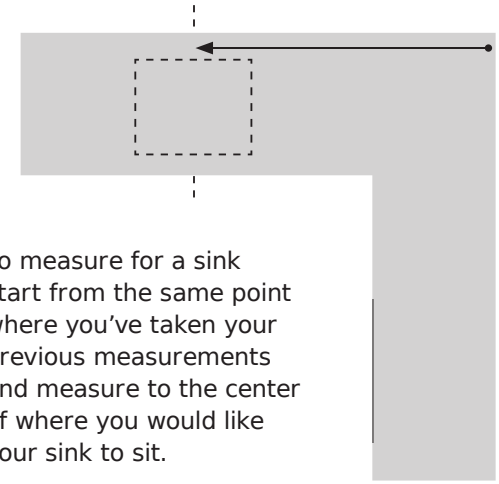
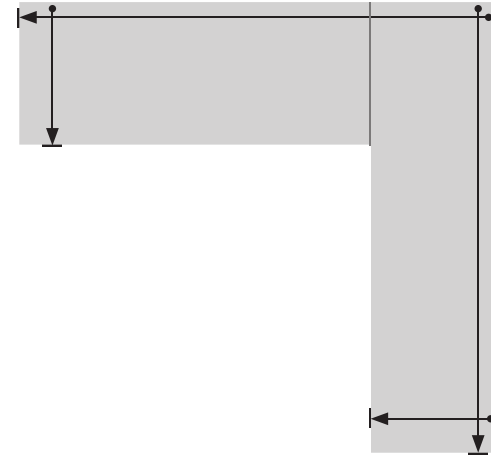
Price includes:  
 Template/Fabrication/Installation (incl. all seams and site seams)  
 All sink, faucet and cooktop cutouts.  
 Installation of under-mount stainless steel sink.  
 All sweep or 3" radius corners. All finished ends.  
 Delivery (up to 47 miles from the store).  
 Additional option charges may apply.

	Level 0	Level 1	Level 2	Level 3
<b>Acrylic</b> thickness				
1½" (3 cm)	\$35/ sq.ft.	\$46/ sq.ft.	\$56/ sq.ft.	-
<b>Quartz</b> thickness				
¾" (2 cm)	\$43/ sq.ft.	-	-	-
1½" (3 cm)	-	\$59/ sq.ft.	\$69/ sq.ft.	\$89/ sq.ft.

## HOW TO MEASURE YOUR COUNTERTOP

Start by measuring your countertop from the corner where it attaches to the wall. Make sure to make your measurements alongside the wall and always start from the same point. When measuring the depth, start from the wall and measure out. Don't forget to add 1½" for an overhang too.

If you need to measure for a freestanding countertop (a kitchen island for example), simply start from one end and add 1½" extra for an overhang.



To measure for a sink start from the same point where you've taken your previous measurements and measure to the center of where you would like your sink to sit.



## SEKTION KITCHEN SYSTEM

**25**  
Year Limited  
Warranty  
INCLUDED

### What products are covered under this limited warranty?

This limited warranty applies to domestic kitchen use only.

This limited warranty covers all of the following parts of the SEKTION kitchen system: • Cabinet frames • Fronts • UTRUSTA hinges • MAXIMERA fully-extending drawers • UTRUSTA shelves of tempered glass and melamine • Toekicks

• Legs • Cover panels • Deco strips/moldings • Countertops (except LILLTRÅSK and PERSONLIG) • Sinks (except FYNDIG) • UTRUSTA dish drainers for wall cabinet • VÅGLIG connecting rail • UTRUSTA supporting frame for waste.

### Products not covered under this warranty

FYNDIG sink, Knobs, handles, LILLTRÅSK countertop, shelves and wall shelves in solid wood. PERSONLIG countertops have a separate warranty. Read below information regarding PERSONLIG warranty.

FÖRVARA drawers, UTRUSTA wire baskets, TUTEMO and HÖRDA open cabinet have a 10-year limited warranty.

## PERSONLIG COUNTERTOP

### Acrylic (Solid Surface) - Limited residential lifetime warranty

- Counter thickness is ½" without buildup while the front roll is 1½"
- Due to the nature of solid surface, colors may vary slightly from the store sample.
- General cleaning of your Solid Surfaces can be done by wiping the surface with a damp cloth or sponge, then dry with soft cloth or paper towels to prevent spotting, especially in areas with hard water.
- DO NOT attempt to repair deep scratches, chips or burns. Contact a certified fabricator/installer.
- Never subject the Solid Surface to extreme hot temperatures. Always place hot items on trivets with rubber feet.
- Avoid strong chemicals that can cause damage to your surface such as oven cleaners, acetone, paint removers, and other strong chemicals. If exposed, promptly flush with water.
- Never cut or chop directly on a surface; always use a cutting/chopping board.
- Avoid standing on countertops or dropping heavy objects on the surface.
- Periodically go over entire surface with a mild abrasive cleanser or a wet blue Scotch Brite™ pad to maintain a uniform appearance.

### Quartz - Limited residential lifetime warranty

- The thickness of Caesarstone quartz slabs are ¾" (2 cm) or 1½" (3 cm) with an allowable variance of +/- 1.5mm.
- Color may vary slightly from in-store samples.
- Quartz is not perfectly smooth. Minor pitting is common and does not affect the performance or constitute a material defect.
- Clean with soap and water on a regular basis. For tougher dirt, use warm water and a damp cloth or a Scotch Brite delicate sponge pad with a small amount of non-abrasive cleaner that does not contain bleach. Method Daily Granite is recommended for cleaning your quartz countertop.
- Trivets and hot pads must be used when placing hot skillets, pans, crock-pots or other heat generating kitchenware on the surface.
- Using cutting boards and taking care not to drop or move heavy objects on the surface will help to ensure long-lasting beauty.

### Limited Warranty

- Original proof of purchase receipt is required.
- Warrantied against any manufacturing performed by the supplier, as well as the correct installation of the product.
- The limited warranty does not protect against natural causes (ie: fire, flood, tornado, etc.).
- Does not cover wear and tear such as stains, scratches, water spots and burns.
- Does not cover failure to comply with care instructions.
- Does not cover chips or damage from abuse or excessive impact.
- Does not cover any products moved from their original place of installation.
- Does not cover repair to electrical, tile or wall surfaces and plumbing modifications possibly required to install the custom countertop.
- Does not cover damages from alterations performed after initial installation.
- The limited warranty is effective only if the owner of the countertop is the occupant of an indoor single-family residence.

## KITCHEN FAUCETS

**10**  
Year Limited  
Warranty  
INCLUDED

### What is covered under this limited warranty?

The 10-year limited warranty is valid for all kitchen faucets (except LAGAN). This limited warranty applies to domestic use only and covers defects in material and workmanship in all kitchen faucets. Our kitchen faucets are tested well beyond all relevant international standards and we use only top brand components to secure our 10 year limited warranty promise.

### What is not covered under this limited warranty?

This limited warranty does not cover normal wear and tear, cuts or scratches, or damage caused by impacts, accidents or waterborne debris.

### What will IKEA do to correct the problem?

IKEA will examine the product and decide, at its sole discretion, if it is covered under this limited warranty. If considered covered, IKEA through its own service operations, will then, at its sole discretion, replace it with the same or a comparable product. If the item is no longer sold by IKEA, IKEA will provide an appropriate replacement. It is IKEA that determines, at its sole discretion, what constitutes an appropriate replacement.

### Conditions for the limited warranty

The limited warranty is valid from the date of purchase at IKEA. The original purchase receipt is required as proof of purchase.

### Exclusions

The limited warranties do not apply to products that have been stored or assembled incorrectly, used inappropriately, abused, misused, altered, or cleaned with wrong cleaning methods or wrong cleaning products. This limited warranty does not cover normal wear and tear, cuts or scratches, or damage caused by impacts, accidents or waterborne debris. It also does not apply to the filter/aerator which should be cleaned regularly or replaced when worn out. Follow our assembly instructions and care instructions carefully. This limited warranty does not apply to products that have been stored, assembled or installed incorrectly, used inappropriately, abused, misused, altered, or cleaned with wrong cleaning methods or wrong cleaning products.

This limited warranty does not apply if the products have been used for public use, outdoors or in a corrosive environment. It also does not cover accidental damage.

For customers in the US only: some states do not allow the limitation or exclusion of incidental or consequential damage, so this limitation or exclusion may not apply to you.

### Care instructions

To be able to rely on this limited warranty you need to follow the specific care instructions for every product. You will find all care instructions in the IKEA stores or at [IKEA-USA.com](http://IKEA-USA.com)

### General legal rights:

This limited warranty gives you specific legal rights. This limited warranty does not, in any way, affect the rights given to you by law.

### How to reach us if you need service:

Contact your local IKEA store. You will find the address and phone number in the IKEA catalog or at [IKEA-USA.com](http://IKEA-USA.com). Save your sales receipt as proof of purchase. Proof of purchase is required for the limited warranties to be valid.

### Special Information

This brochure has been prepared by IKEA. Sources of supply and specifications are subject to change. Every reasonable effort will be made to ensure that all advertised merchandise is available in adequate supply. A high standard of accuracy has been sought in the preparation of this brochure. Errors and omissions are always a possibility. Although IKEA cannot be held responsible, upon discovery of any error or omission, all reasonable steps will be taken to inform IKEA customers.

### Country of Origin

For all our products, we choose specialized manufacturers who can produce our components at the lowest price. A single item may consist of several components from different countries. Country of origin information is available on each component when you pick it up.

### Stock Availability

Not all products may be available in all stores. See what is available in your local store by visiting [IKEA-USA.com/stockavailability](http://IKEA-USA.com/stockavailability)

## PERSONLIG TERMS AND CONDITIONS

### Terms for all custom stone and solid surface countertop materials

#### 1. Making an appointment:

**1.** Making an appointment:

**1.1.** An appointment will be made with the customer to validate the layout and measurements as described by the customer in store. A custom countertop fabricator will contact the customer within 3 business days of the purchase and receipt of order to schedule a template appointment.

**1.2.** Appointments will be scheduled within a 3-hour window of arrival due to potential traffic delays. Actual template appointment duration time will vary.

**1.3.** An appointment to the customer's home is only offered for acrylic and quartz countertops.

**1.4.** A minimum of 24 hours' notice is required if a scheduled appointment must be cancelled/changed in order to avoid a missed appointment fee.

#### 1. Preparing for template appointment:

**1.1.1.** Full height backsplash (those that run the entire space between the countertop surface and the bottom of the wall cabinets) may require to be measured after the countertop installation to ensure accuracy. The custom countertop fabricator shall determine this at the time of initial template.

**1.2.** All existing countertops must be removed prior to template date unless customer opted to have custom countertop fabricator perform tear-out and disposal of existing countertop for additional fee.

**1.2.1.** Removal of existing countertops may expose unpainted or unfinished walls or cabinet areas which may not be fully covered by the new countertop. Homeowner assumes the responsibility for patching holes, painting, tiling and/or replacing trim on newly exposed surfaces.

**1.2.2.** If custom countertop fabricator performs tear-out of existing countertop, fabricator is not responsible for levelling the existing cabinets.

**1.3.** All base cabinets, support panels, etc. must be completely and properly installed (permanently set, level/flush/secured to the wall/floor) Ensure that all end panels, finish caps, and trim pieces are in place before template.

**1.4.** Any levelling, structural repair, plumbing or electrical work is the responsibility of the homeowner.

**1.5.** Countertops should be cleared and all items removed from under the sink prior to template.

**1.6.** All new or existing sinks, faucets, cooktops, and ranges that shall be installed will need to be on site but unattached and uninstalled at the time of template.

**1.7.** Failure to meet the above conditions may result in an additional charge for a return trip.

#### 2. At time of template appointment:

A homeowner or designated representative 18 years of age or older must be present during the entire template and installation process. This person must approve all completed work and sign off on a completion certificate signifying all work has been done to their satisfaction. Custom countertop fabricator will not proceed without a person of authority present. The appointment will be rescheduled and an additional trip charge may apply.

**2.2.** Seam locations will be discussed at time of templating. Fabricator will make best effort to meet the desired plan for seams; however, it may change at time of fabrication.

**2.3.** Any deviations from the original project specifications and measurements, provided by the customer in store, may result in a price adjustment.

**2.3.1.** Should a price adjustment need to be performed, the fabricator will inform IKEA with any changes due to additions, specification changes, subtractions or variations in square footage.

**2.3.2.** The fabricator will explain changes to customer. A price adjustment form will be completed and sent back to customer via email if the customer has access to print, or a hard copy will be mailed if they do not have access to a printer. A hard copy of the form will need to be presented in store.

**2.3.3.** The customer must return to the IKEA store where the original purchase was made with the completed 'IKEA Solid Surfaces Custom Countertop Price Adjustment' form and the original receipt in order to process the transaction.

**2.3.4.** Upcharges: Fabricator will not proceed with work until so notified by IKEA. Price adjustments will result in the rescheduling of installation date. The new installation date may be up to 15 business days from the time the fabricator receives approval from IKEA to proceed.

**2.3.5.** Refunds: Fabricator will proceed with work and book installation within 10 business days from time of template. Note: Minimum 25 Square Feet applies to all materials

**2.4.** After template completion, all project details will be considered final and CANNOT be changed.

**2.5.** Parking must be provided by customer on template and installation day.

#### 3. Preparing for installation:

**3.1.** A homeowner or designated representative 18 years of age or older must be present during the entire installation process. Parking must be provided by customer on installation day. If fabricator is asked to halt work due to noise requirements, hours, or other restrictions, an additional charge may apply for return trip.

**3.2.** Prior to installation, customer must cover anything they want to protect. The installation process may result in some dust.

**3.3.** Customer must ensure there is sufficient space through doors or openings that the countertop can fit through. All pathways must be clear from obstructions. Countertops are heavy and require a clear and safe path to maneuver them during installation.

**3.4.** Access to water and electricity in the home is required for fabricator to complete detailing required.

**3.5.** Any debris created by the fabricator will be removed and disposed of by the fabricator. Homeowner is responsible for any debris removal and disposal not created by fabricator.

**3.6.** All plumbing and range/cook-top connections must be disconnected and removed prior to installation. Fabricator is not responsible for any situations where plumbing has been reconnected before job completion.

**3.7.** All sinks must be made available to the fabricator for precise cutting. Please note that job cannot continue without sink.

**3.8.** Ranges and refrigerators may have to slide out if the space is too tight. Ranges and refrigerators should be moved out of their cabinets to allow installer free access to all countertop edges. It is the homeowner's responsibility to move and/or disconnect all appliances.

**3.9.** Homeowner must secure all pets prior to installation appointment.

#### 4. Other considerations:

**4.1.** Under mount sinks need to cure for 24 hours before plumbing can be connected

**4.2.** DOMSJO sink installation, a cooktop/built in oven combination or a slide-in range situation requires 1½" (3 cm) solid surface.

**4.3.** All seam locations are determined by the fabricator and they reserve the right to place seams in the most structurally sound locations.

**4.4.** Fabricator is not responsible for installation of support brackets for overhangs, electrical and plumbing work.

#### 5. Completion:

**5.1.** Upon completion of your new countertop installation, you will be asked to sign a completion certificate. It is the responsibility of the homeowner to inspect work thoroughly and bring up any concerns immediately to the attention of the installers.

#### 6. Cancellation:

**6.1.** Orders can be cancelled before templating has taken place with no charge.

**6.2.** Orders cancelled after templating but prior to production will be subject to a trip charge of \$225.

**6.3.** No cancellations after production and or installation

## DO IT YOURSELF IN 4 EASY STEPS

Here's how to buy your kitchen at IKEA. Remember that we have services to help you every step of the way. Simply choose the ones you need.

### 1 MEASURE

Measuring your kitchen isn't hard to do, but it's important that you get it right because your measurements will be the basis for all of your planning. To see exactly what to measure, pick up a copy of the kitchen planning guide at your local IKEA store or go to [IKEA-USA.com/kitchen](http://IKEA-USA.com/kitchen).

**Need some help?** Find out about our in home Measuring Service at [IKEA-USA.com/services](http://IKEA-USA.com/services)



### 2 DREAM AND PLAN

Planning your kitchen is when your dreams and ideas take shape. There are lots of things to think about, like where to put the fridge or how many drawers you need. That's why we have tools that'll help you decide on the perfect design. If you want some expert advice, we have Kitchen Planners ready in the store to help.

**Need some help?** Find out about our in home planning and design services at [IKEA-USA.com/kitchen](http://IKEA-USA.com/kitchen)



### 3 ORDER

When you're satisfied with your planning, drop by your local store to visit our kitchen experts. They will go over your kitchen plan with you, and help you with anything you're not sure about. When you're ready you can order and we can help with delivery and other services too.

**Need some help?** Find out about how to order your kitchen at [IKEA-USA.com/kitchen](http://IKEA-USA.com/kitchen)



### 4 INSTALL

IKEA kitchens are designed to be installed by you, but we're here to help as much as you'd like along the way. You can start by picking up the kitchen installation guide, which shows you how to do it yourself, step by step. Or check out the different installation services offered by an Independent Service Provider.

**Need some help?** Find out about our Installation Service at [IKEA-USA.com/services](http://IKEA-USA.com/services)



## INSTALLATION SERVICES

Take advantage of a full range of services from planning to installation - everything you need to make your kitchen dream a reality. Simply choose the package that suits you.

### PROFESSIONAL KITCHEN MEASUREMENT

We offer a Measuring Service that will send an experienced professional from an Independent Service Provider to your home to assess the conditions and provide accurate measurements. Not only can this service save you all kinds of headaches, but when you buy an IKEA kitchen it costs you nothing - your Measurement Service fee is refunded.

### IN-HOME INSTALLATION PRICE QUOTE VISIT

Upon completion of your Kitchen Plan on our IKEA Home Planner, we can schedule your In-home Installation Price Quote visit. A professional from an Independent Service Provider will quote the scope, price and timeline for installation of your IKEA kitchen.

### KITCHEN INSTALLATION SERVICE

Installation is provided by an Independent Service Provider and is priced per cabinet, so it's easy to calculate the cost of installation. Complete your kitchen with additional services. Each additional installation service has a unit price so it's easy to calculate the total price of any additional services you need.

### INDIVIDUAL KITCHEN PLANNING SERVICE

This service includes the Measuring Service and a Personal Planning Consultation. A professional kitchen planner from an Independent Service Provider will visit you in your home for a non-refundable fee for up to 4 hours to give you a detailed layout of your kitchen including cabinets, appliances and IKEA countertops.

Your Personal Consultation with your Kitchen Planner includes:

- Detailed kitchen plan and 3D view drawing prepared on the IKEA Home Planner and saved to your account under your unique user profile.

- Parts list and Price quote:

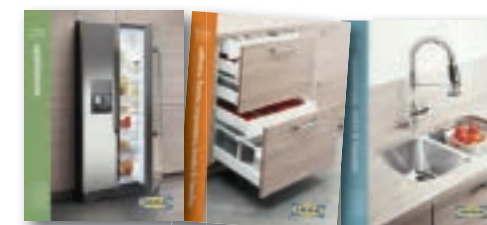
- Itemized price quote for IKEA Kitchen products
- Itemized price quote for the dismantling and removal of old kitchen
- Itemized price quote for installation of new kitchen

- Architectural detail drawings, shop drawings, and specifications are available at additional costs.

WE'VE GOT THE TOOLS TO HELP MAKE YOUR DREAM KITCHEN A REALITY. FIND THEM AT YOUR LOCAL IKEA STORE OR ON [IKEA-USA.COM](http://IKEA-USA.COM).



Our kitchen brochure is one of your best sources for ideas and information. Plus it gives you an overview of our whole kitchen range.



Our three buying guides have detailed information about our kitchen range. You'll be able to compare products and choose exactly what you need for your kitchen.



[IKEA-USA.com](http://IKEA-USA.com) is one of your biggest resources for making your dream kitchen a reality. Here you'll find our Home Planner and information on our complete range of kitchen products and services.



Our planning guide helps you measure, plan, order, and install your IKEA kitchen. It's your kitchen workbook, including tips and advice for planning your new kitchen.



Our kitchen installation guide gives you the information you need (plus some handy tips) for installing your kitchen properly.