

Welcome!!!
Just hang On :o)
Our meeting will start soon.



MarysHerbs.com

Disclaimer

This webinar is not to be used instead of going to a competent doctor. I do not directly nor indirectly dispense medical advice nor prescribe in any way alternative treatment.

In the event you use this information, which is only of historical value, you are prescribing for yourself which is still your constitutional right. I assume no responsibility.

I am independent in my attempt to educate the public. Although I do endorse some top quality products, I receive no financial support from any health or herb company for producing and sharing this information.

I also believe it is a crime that we have to pussy foot around the truth because there is a law that says that I cannot declare what changing your lifestyle and diet can do for your health, but I love this great country and will do my best to try to obey their law, even if I strongly disagree with them...

Natural health works slowly. I suggest that you do not stop medication without guidance of a doctor. I say this not only because it is the law, but because I BELIEVE STOPPING MEDICATION WITHOUT THE GUIDANCE OF A DOCTOR IS UNWISE AND DANGEROUS.

If you would like to make healthier changes in my diet and my doctor was not willing to help you while you work with a natural health practitioner, I suggest you find a doctor who values and respects his patient's rights and fire the doctor who would not!



MarysHerbs.com

Course Outline

There are 12 sessions. The first 9 classes will consist of – 3+ hours of instruction and discussion.

Between each of the classes there will be a short quiz of what was covered that week in class. And you will be required to send 2 clear eye pictures to my email MarysHerbs@aol.com each week.

Then there will be 2 classes of Mock Consultations. The first will be Iridology and the second will be 2 hours Iridology, 1 hour sclerology and 1 hour pupil tonis. Each student will be expected to send in 2 people's eyes... 4 eyes the week before the next class.

Last class will be a 2 hour one on one review for the test. A pretest will have been filled out and we will cover common misconceptions.

27
8
3
38 hr

MarysHerbs.com

IIPA Ready Iridology

Class 1 ~ Introduction, Terms and Basics

Class 2 ~ Anatomy of the Eye and Zones

Class 3 ~ Collarette

Class 4 ~ Constitutional Types By Color and Structure

Class 5 ~ Pigmentation

Class 6 ~ Lacunea

Class 7 ~ Iridology Syndromes

Class 8 ~ Pupil Tonis

Class 9 ~ Sclerology

Class 10 ~ Mock consultations

Class 11 ~ Mock consultations

Class 12 ~ One on One Review

One on one - consists of :

- Questions/ answers
- Reviewing quizzes
- Mock or real consultations

MarysHerbs.com

Handout, Homework and Quiz Links

Chart - <http://marysherbs.com/gotomeetings/ChartMine2.swf>

Sample Disclaimer -

<http://www.marysherbs.com/GOTOMEETING/2016ClassHandouts/IIPA/Your%20Disclaimer%20to%20Us.docx>

Handout on "HOW TO TAKE A CLEAR PICTURE OF THE IRIS AND SCLERA" - <http://www.marysherbs.com/GOTOMEETING/2016ClassHandouts/IIPA/TakingIrisScleraPix.docx>

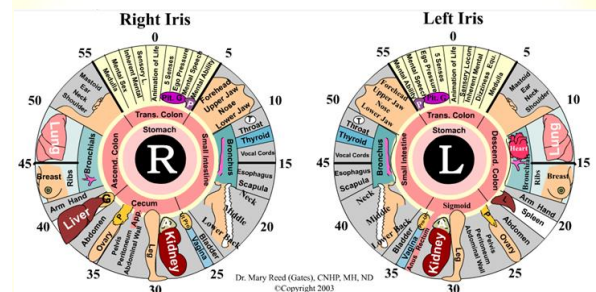
For the Handouts, it will say page not found, but in the bottom left corner you will see the file, click on file to open.

Link to Quizzes:

- Quiz #1 https://docs.google.com/forms/d/1YeFhX84oBav6guEKre1T_0qcdLaZx5PPfBQRAJoY/
- Quiz #2 <https://docs.google.com/forms/d/1VvAf2sj3ZhmWzXdeD9tqB3BvSLuNFNTaYbmlRd0/>
- Quiz #3 https://docs.google.com/forms/d/1pn-Ugq4rFXnzvBXWvhaZnIR_1f1Mxh-wTo19ZqM/
- Quiz #4 https://docs.google.com/forms/d/1VvAgleRa_q11NAmvZLxk6FmBp0zuEG2yI9mfpCA/
- Quiz #5 https://docs.google.com/forms/d/1mc6g6QqQf-Xnr_x5mLjP1xXuR8M7O2Vafkv7zI8Bg/
- Quiz #6 <https://docs.google.com/forms/d/1sIMuRrEOD-oeEwqzFNBZAaGO0Hd30DIUostFmGA/>
- Quiz #7 <https://docs.google.com/forms/d/1o1EtrIS2If5dRjRCwipVPFeYBQVgzxN3EdPuYU6X0/>
- Quiz #8 https://docs.google.com/forms/d/1eATCmZm0LEmWU-rYASq_iGqLK-YrJkqIN4v1k8/
- Quiz #9

MarysHerbs.com

Learner's Chart



MarysHerbs.com

IIPA Ready Iridology

Class 1 ~ Introduction, Terms and Basics

Class 2 ~ Anatomy of the Eye and Zones

Class 3 ~ Collarette

Class 4 ~ Constitutional Types By Color and Structure

Class 5 ~ Pigmentation

Class 6 ~ Lacunea

Class 7 ~ Iridology Syndromes

Class 8 ~ Pupil Tonis

Class 9 ~ Sclerology

Class 10 ~ Mock consultations

Class 11 ~ Mock consultations

Class 12 ~ One on one Review

MarysHerbs.com

Why IIPA?



- Give credence to Iridology
- Standardized information
- To integrate European and Modern American Iridology and Medical terminology
- To conduct studies to prove what is true and what is a fallacy

Google list the definition of Iridology as: (in alternative medicine) diagnosis by examination of the iris of the eye.

<http://www.quackwatch.com/> Calls Iridology as a pseudo science at best and fraud at its worse.

Iridology – The study of the Iris (the colored part of the eye), including its mark, toxins and variation of the fibers which indicate, genetic weaknesses and inherent strengths. This can give insight to where the person needs to relax, build or stimulate tissues in the body.

MarysHerbs.com

Five Studies of the Eyes (EyeOlogy)

Pupil Tonis – The study of the size, shape and characteristics of the Pupil (Class 8)

Iridology – The study of the Iris (the colored part of the eye), including its mark, toxins and variation of the fibers which indicate, genetic weaknesses and inherent strengths, which gives insight to where the person needs to relax, build or stimulate tissues in the body. (Classes 2-7)

Rayid – Associates the patterns in the iris indicating personality traits.

Time Risk – (Not covered in this course, not need to be certified, but recognized by IIPA)

Sclerology– The study of the sclera's (the white part of the eye) texture, color and blood vessels. Indicating how diet, exercise, stress and lifestyle are affecting the body. (Lesson 9)

MarysHerbs.com

A Sound Eye



The **Eye of Horus** is an ancient Egyptian symbol of protection, royal power and good health.

Rx is derived from the Latin word "recipe," meaning "take." It is believed by most that the Rx symbol evolved from the Eye of Horus, an ancient Egyptian symbol associated with healing powers.

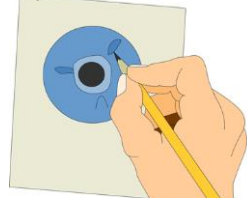
MarysHerbs.com

Iridology Genesis and History



Legend has it that as a child Ignaz, born in Hungary had a pet Owl that broke its leg. He noticed that it developed a dark mark on the bottom of the Iris on the side the leg was broken.... As it healed, the line disappeared.

Later Ignaz Von Peczely in the mid 1800's became a doctor and noticed things in the Iris of his patients.



He would record/draw the difference along with the symptoms and developed the first Iridology chart.

MarysHerbs.com

Ignaz Chart Was Remarkably Accurate

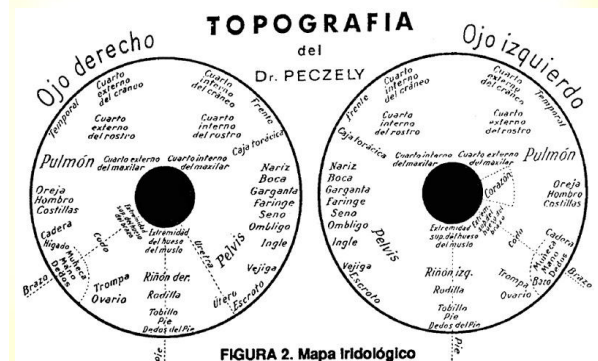
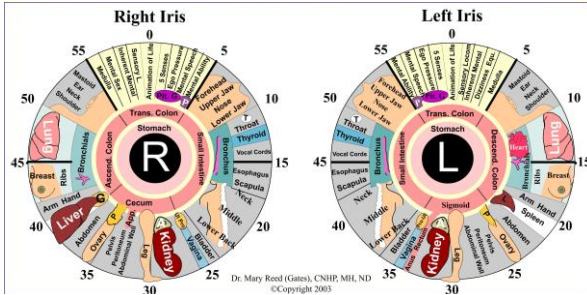


FIGURA 2. Mapa Iridológico

There are many charts since Ignaz. You can purchase them online.

I provide you a very simple chart included in this class.
Not IIPA sanctioned



Many cultures looked to the Eye to determine health

- Pastor Nils Liljequist 1851-1936, Stockholm, Sweden
- Pastor Emmanuel Felke, 1856 – 1926, Kladen, Germany
- Rudolf Schnabel, 1882-1952, Cologne, Germany
- Joseph Angerer, 1907-1994
- Joseph Deck, 1914-1992, Ettlingen, Germany (Angerer's colleague)
- Theodore Kriege, 1900's, Germany, Student of Schnabel, Angerer and Deck
- Dorothy Hall, 1980's, Emotional Iridology Pioneer
- Toni Miller, present, foremost Australian Iridologist
- Dr. Benard Jensen, Chiropractor, 1908-2001, Escondido, CA

The similarities of what is indicated in the eye were so impressive, however names and techniques varied greatly. IIPA is trying to mesh together, all substantiated information in a common language.



Is Iridology a diagnostic tool?

Iridology can lend insight to our body's imbalances, genetic weaknesses, possible toxins and lends information on how best to cleanse those toxins out.

You can **NOT** diagnose using the Iris because:

- A diagnosis is the identification of an illness by examination of the symptoms
- Iridology indicates weaknesses, toxins or imbalance; for instance Emphysema and Asthma both stems from a lung which is less than perfect. However, it is impossible to determine which health condition from which the person suffers by the Iris alone
- Diagnosis is an inefficient way for people to choose what can help them regain their health. The same named disease might respond differently in different people
- It is against the law



Remember

Iridology is to help someone understand how to develop a healthy lifestyle.

It should not be used to alarm.

Include strengths and comfort.

Should not just be a way to sell supplements.

Information shouldn't be shared with anyone else. It is their information.

Respect personal space.

Ask permission. (I say... shall we get started?)

Explain and teach them about what you see so you can help them take control of their health.

Protect yourself – prayer and/or diode.



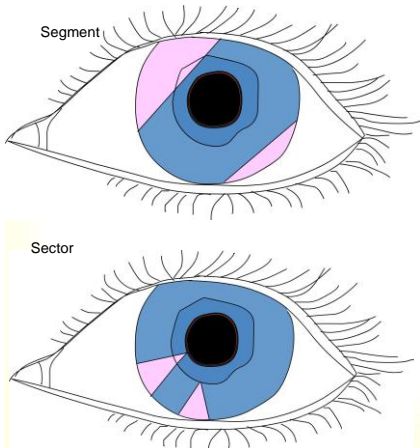
Terms

Jensen Terminology	IIPA Terminology
Absorption Ring	Pupillary/Pigment Ruff
Autonomic Nerve Wreath	Collarette
Cholesterol/Sodium Ring	Lipemic Diathesis
Lesions/Lesions	Lacuna/Lacunae
Lymphatic Rosary	Flocculation, Tophi, Hydrogenoid Subtype
Murky eye	Mixed Biliary
Nerve/Stress Rings	Contraction Furrows
Psora/Drug Spots	Genetic Pigment
Radial Solaris/Parasite Lines	Radial Furrows
Rheumatic Eye	Febtile Subtype
Scurf Rim	Scurf Rim Subtype by Color
Strong Constitution	Neurogenic Subtype
Toxicity	Genetic Pigments
Weak Constitution	Connective Tissue Subtype

Topostabile and Topolabile

- Topostabile – Pigment deposits or Lacunae found in a specific part of the chart indicating the place of which it is weak. For instance a lacuna in the lung indicates the health of the lung.
- Topolabile - Pigment deposits or lacuna indicate location of what body part is in need of nutrients. For instance, yellow in the eye indicates uric acid – kidney function, no matter where it is found in the eye.
- Whenever it is both topostabile and topolabile, think of that as a double whammy. For instance, brown pigment found on the reference point for the liver, is a stronger indication of liver weakness than if there was either a topostabile (lacuna) or a topolabile (the brown pigment) alone.





Terminology

Just as it would be hard to hold a conversation with someone from a different country, it can be equally frustrating to try to communicate to the various terminology used among Iridologists.

IIPA is trying to uniform the terminology to break that language barrier.

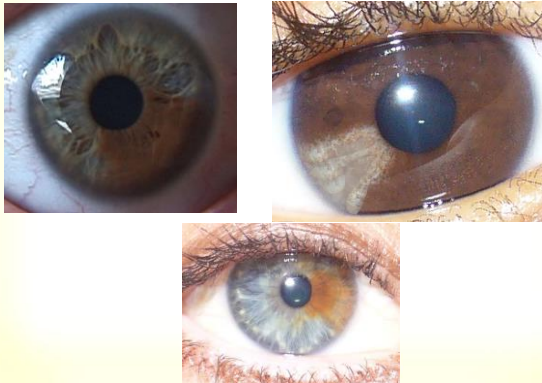
We will try to relate the common terminology with that of the IIPA standard.

Segment



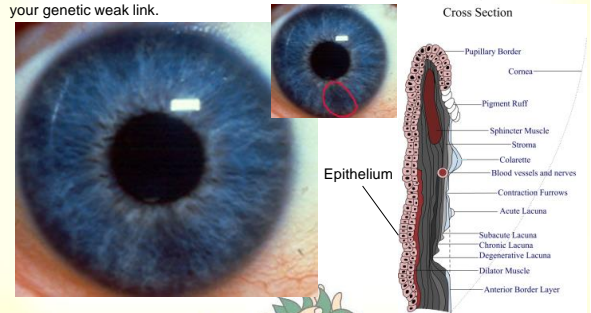
MarysHerbs.com

Sector



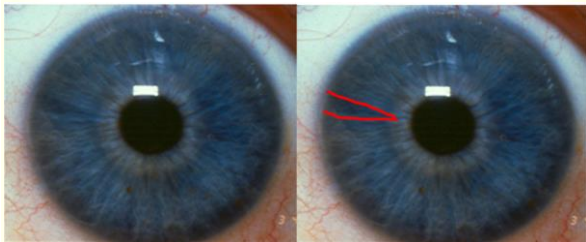
Rarefaction

Fibers are less dense in an area where the posterior epithelium shows through. This indicates a weakness which needs extra care and nutrients. Perhaps think of it as your genetic weak link.



MarysHerbs.com

More Examples of Rarefaction



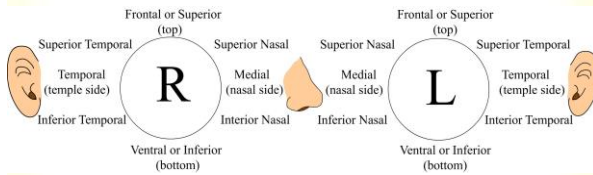
MarysHerbs.com

More Examples of Rarefaction



MarysHerbs.com

Positional Terminology



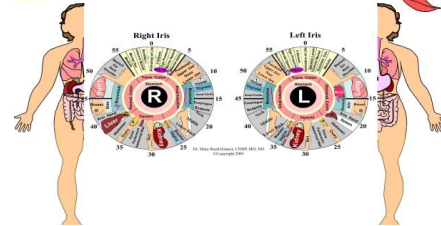
MarysHerbs.com

Terminology

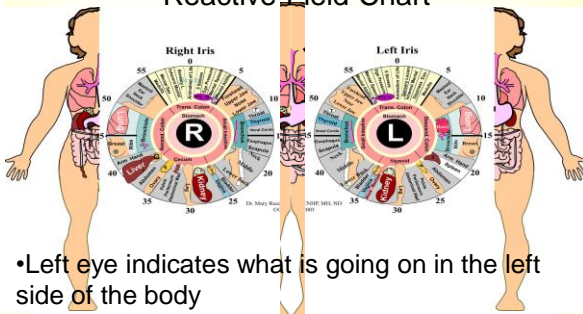
Optic Chiasm

Ki As em

The place where the optic nerves switch over to the eye, just as there is a switch over between the brain and body.



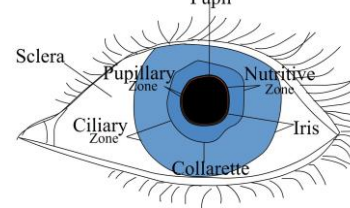
Reactive Field Chart



- Left eye indicates what is going on in the left side of the body
- Right eye indicates what is going on in the right side of the body

MarysHerbs.com

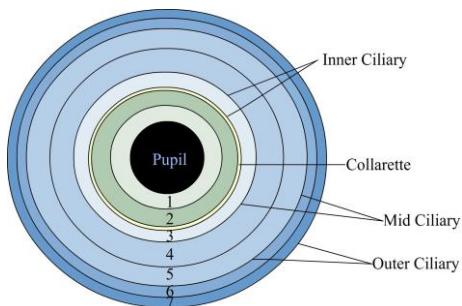
Iris Zone



Iridology is the study of the Iris which is the colored part of the eye between the pupil and the Sclera

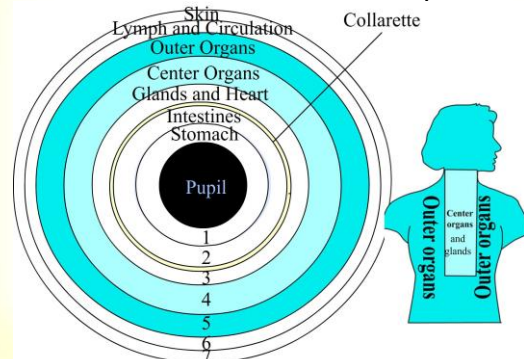
MarysHerbs.com

The Seven Iris Reflex Zones of the Iris



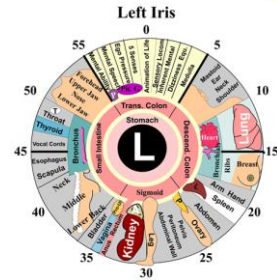
MarysHerbs.com

The Seven Iris Reflex Zones of a perfect Iris



Using One of the Various Charts

Reaction field ... I like using degrees or minutes instead of hours.



MarysHerbs.com

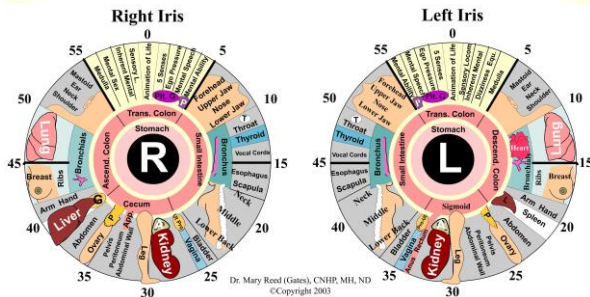
Important to Note

- Topolabile – Sign or pigment which indicates weakness in a specific organ regardless of the area of which it is found on the chart. Such as Shoe or Tulip Lacunae, or pigmentation such as brown for liver.
- Topostabile – Pigment deposits or Lacunae found in a specific part of the chart indicating the place of which it is weak.

Signs can be topolabile, topostabile, or both.

MarysHerbs.com

Topography of the Iris Reaction Field (see position on chart)



MarysHerbs.com

Zone 1 & 2 Pupillary Zone and Nutritive Zone Inside of the Collarette

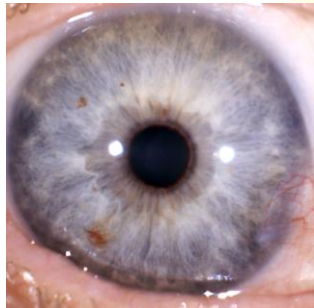
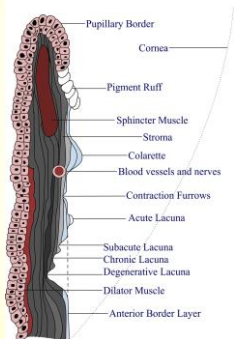
1. Stomach – Digestion
2. Intestines - Absorption

MarysHerbs.com

The Pupillary Ruff

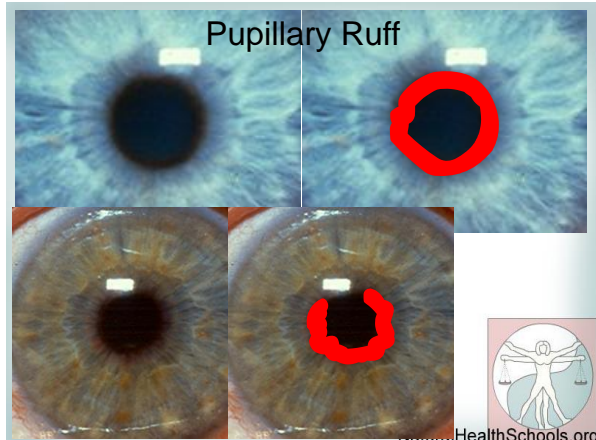
Cross Section

Posterior Epithelium – makes up the Pupillary Ruff



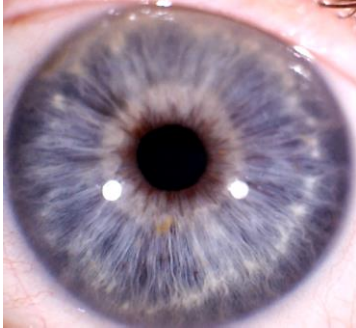
MarysHerbs.com

Pupillary Ruff



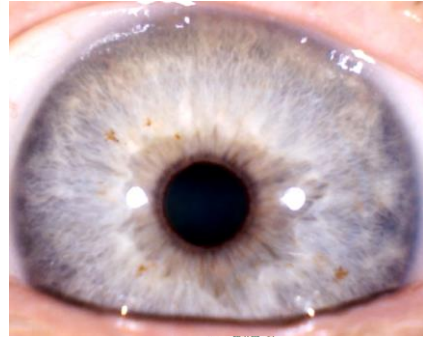
NaturalHealthSchools.org

Pupillary Ruff



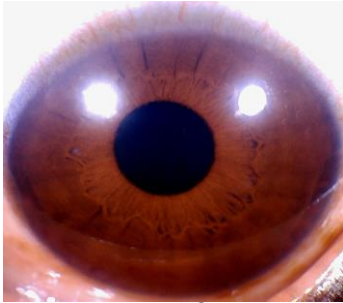
MarysHerbs.com

Pupillary Ruff



MarysHerbs.com

Little to No Pupillary Ruff



MarysHerbs.com

Pupillary Ruff



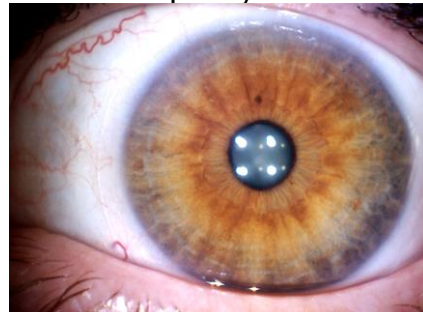
MarysHerbs.com

Little to No Pupillary Ruff



MarysHerbs.com

Pupillary Ruff



MarysHerbs.com

Little to No Pupillary Ruff

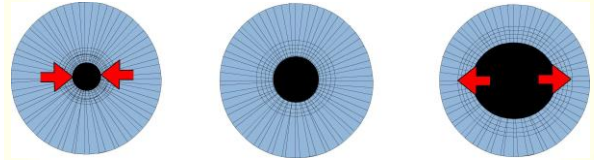


MarysHerbs.com

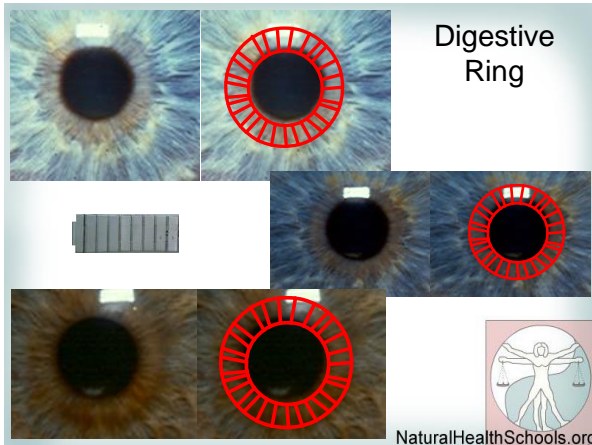
The Digestive Ring

Ciliary Body – muscle (longitudinal, circular and radial) and processes

The Digestive Ring is the Ciliary Muscle showing through the stoma. (Fibers of the Iris).



MarysHerbs.com

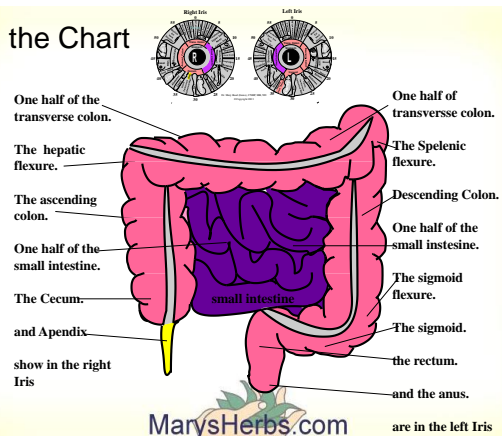


Digestive Ring



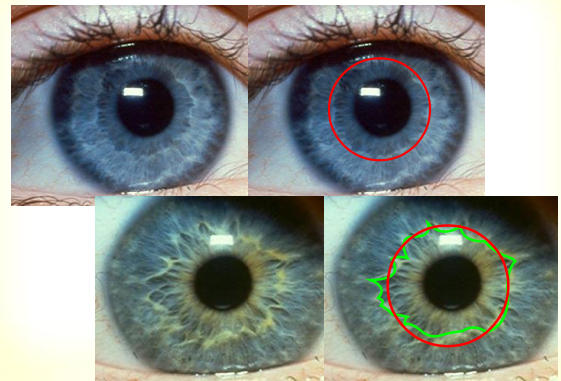
Digestive Ring

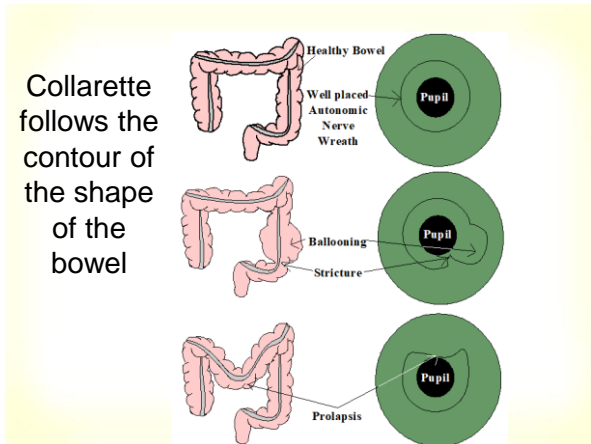
On the Chart



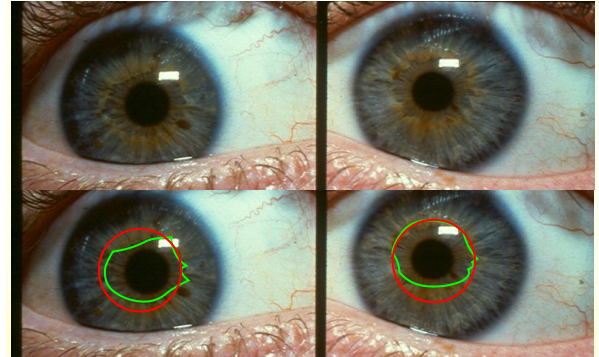
MarysHerbs.com

Red Indicates Where Collarette Should Be

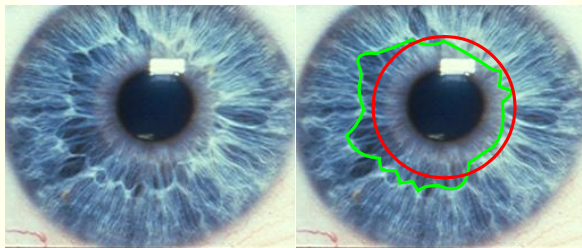




Prolapses Of the Transverse Colon Sigmoid Indicators



Ballooning of the Ascending Colon



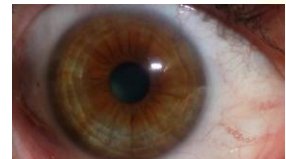
MarysHerbs.com

Central Heterochromia

het·er·o·chro·mi·a (hēt'ə-rō-krō'mē-ə)

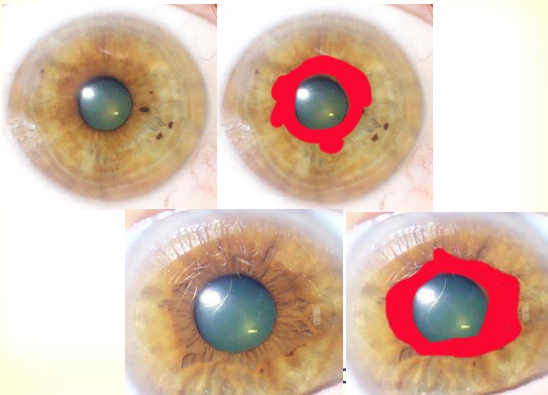


Central Heterochromia - pigment in nutritive zone indicating toxins when it goes beyond the collarette. It could possibly be leaky gut.



MarysHerbs.com

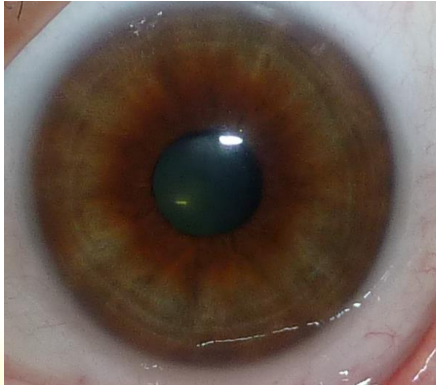
Central Heterochromia



Central Heterochromia



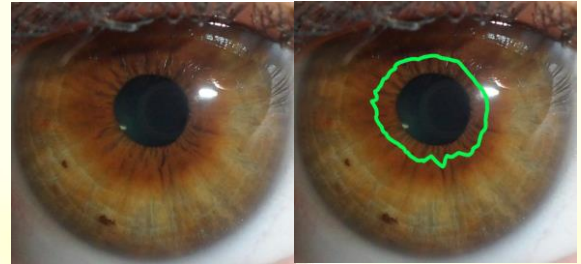
Central Heterochromia



Zone 3

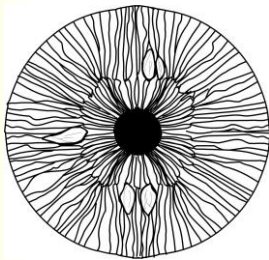
Humoral or Inner Ciliary Zone

The Humoral (fluids such as blood and lymph) in the body
The organs which transports them



Zone 3

Polyglandular Humoral or Inner Ciliary Zone



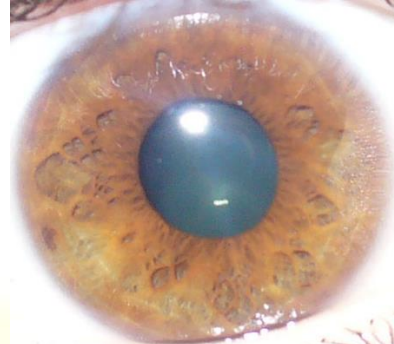
Three lacunae or more
around the collarette



MarysHerbs.com

Zone 3

Polyglandular Humoral or Inner Ciliary Zone



Zone 4

Ciliary Zone – Muscles
Utilization zone

MarysHerbs.com

Zone 5

Mid-Ciliary Zone
Utilization

- Bones
- Spine
- Connective tissue

MarysHerbs.com

Zone 6
Outer Ciliary Zone
Lymph Detoxification

- Mucous membranes
- Blood
- Lymph

Tophi
Hydrogenoid subtype

MarysHerbs.com

Lymphatic SUBTYPE - Hydrogenoid

Less than 3 not hydrogenoid



Hydrogenoid



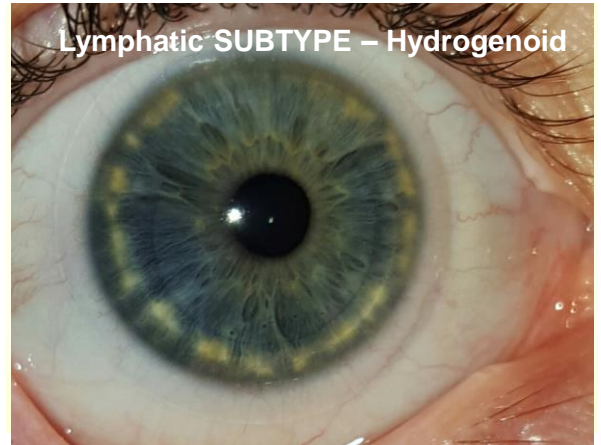
MarysHerbs.com

Lymphatic SUBTYPE – Hydrogenoid



Hydrogenoid

Lymphatic SUBTYPE – Hydrogenoid



Lymphatic SUBTYPE – Hydrogenoid



MarysHerbs.com

Lymphatic SUBTYPE – Hydrogenoid



MarysHerbs.com

Zone 7

Outer Ciliary Zone

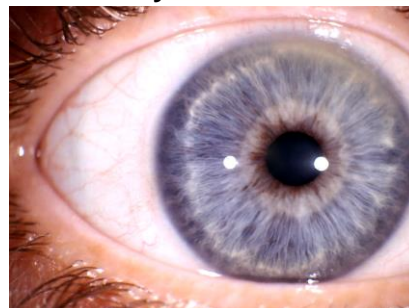
Skin Elimination

Poor skin elimination can adversely effect:

- Liver
- Kidneys



SUBTYPE by Color – Scurf Rim



Fiber
seem to
drop off....
Less
dense



SUBTYPE by Color – Scurf Rim



The Health Equation – Bill Caradonna

Health Status = Physical Inheritance + Environment (Diet and Lifestyle) + Emotional/Spiritual Health + Age

Physical Inheritance – DNA, genetic strength and weaknesses inherited from our ancestors.

Environment – Our lifestyle, diet, exercise, sleeping habits, etc.

Emotional and Spiritual Health – Our connection with God and our connection with others. Relationships... Laughing, Loving, Hugging etc.

Age – Even the most diligent people notice a decline during the aging process. How we treat our body is paramount in improving this part of the equation.



Handout, Homework and Quiz

Print Chart - <http://marysherbs.com/gotomeetings/ChartMine2.swf>

Print Sample Disclaimer -
<http://www.marysherbs.com/GOTOMEETING/2016ClassHandouts/IIPA/Your%20Disclaimer%20to%20Us.docx>

Print Handout on "HOW TO TAKE A CLEAR PICTURE OF THE IRIS AND SCLERA"
-
<http://www.marysherbs.com/GOTOMEETING/2016ClassHandouts/IIPA/TakingIrisScleraPix.docx>

- Take Quiz #1
https://docs.google.com/forms/d/1YeFhX84oBavA6guEKre1T_0qcrdLaZxB5PPFbQRAJoY/
- Take 2 sets of clear pictures of someone's Iris and email to MarysHerbs@aol.com



Questions

PERSON WHO
INVITED YOU

Victoria
208-569-9589 cell

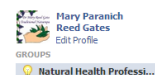
NtrlDoc@gmail.com email

<http://www.naturalhealthchicks.com> website

<https://www.facebook.com/groups/Healthchick/>

Facebook page

facebook



Mary Reed Gates
MarysHerbs@aol.com

717-898-2220



Questions PERSON WHO INVITED YOU

Shari

sweisenbach@etczone.com email

<http://herbalbeginnings.weebly.com> website

(812) 593-0419 Phone

<https://www.facebook.com/Herbal-Beginnings-850250861668814/timeline/>

Facebook page

facebook



Mary Paranych
Reed Gates
Edit Profile

GROUPS

Natural Health Professi...

Mary Reed Gates

MarysHerbs@aol.com

717-898-2220

