

2019-2020
Carrollwood Day School
Upper School

Course Registration



BEGIN WITH THE END IN MIND

STEPHEN COVEY

 Long Term Care Primer

3 THINGS THAT MOTIVATE US BASED ON INTRINSIC MOTIVATION



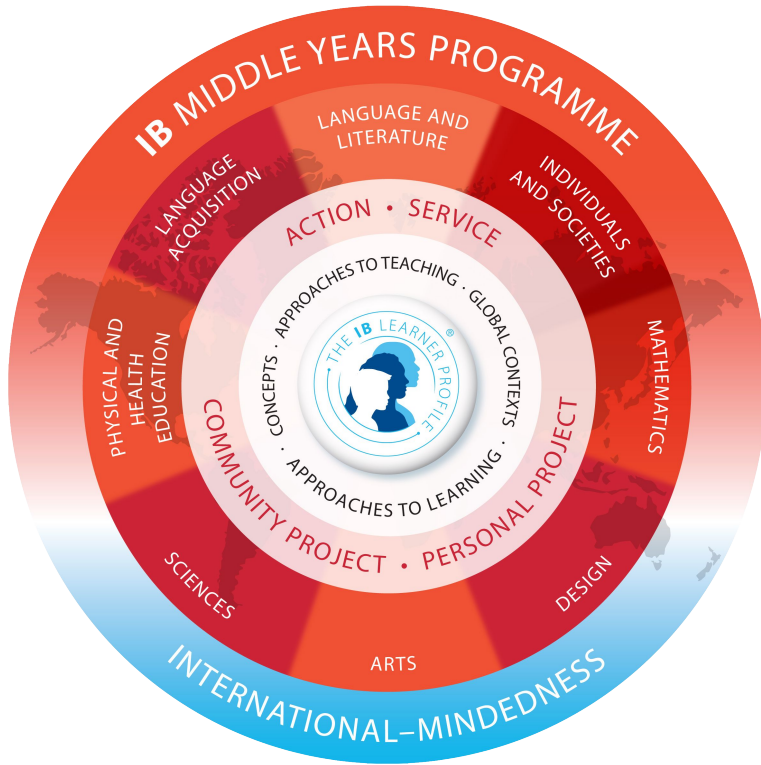
AUTONOMY
MASTERY
PURPOSE

MADE FAMOUS IN DAN PINK'S **TED** TALK
"THE PUZZLE OF MOTIVATION"

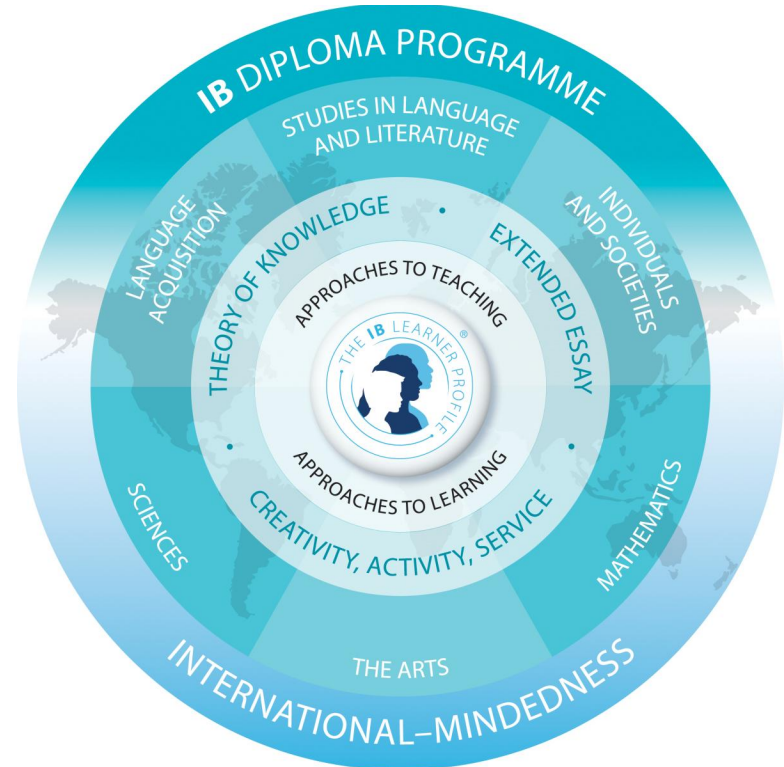
Course Registration

- Role of Students
- Role of teachers & advisors
- Role of parents
- School process

CDS Curriculum Overview



MYP Program: Grades 6 - 10



DP Program: Grades 11 - 12

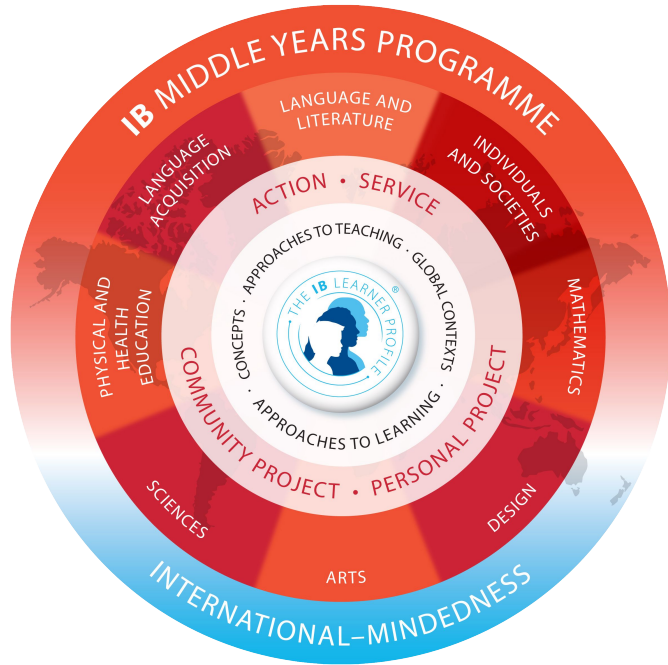
New for 2019-2020: IB Career-Related Programme



For students particularly interested in:

- Performing or Visual Arts
- Sports Medicine/Athletic Training

Curricular Choices: 9th & 10th



Resources:

- Classroom teachers
- MYP coordinator
- US Administration

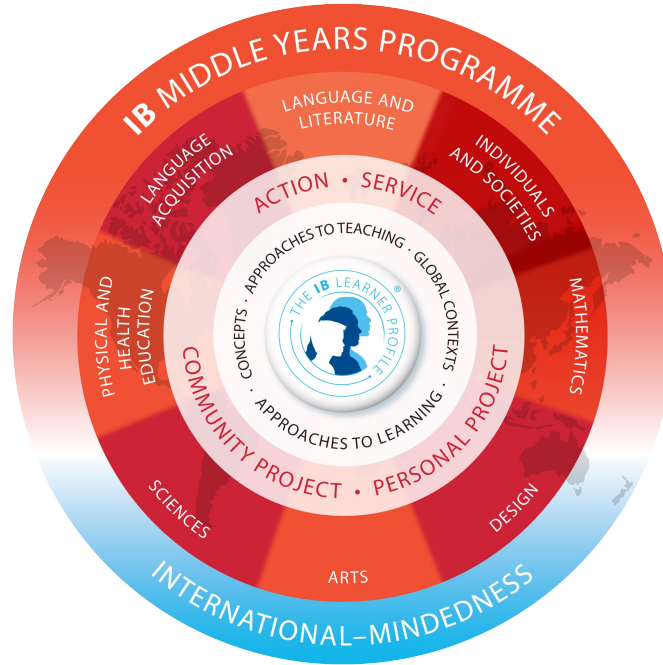
9th Grade Course Selection

Design

MYP Computer Science
Introduction

MYP Design PLTW Intro to
Engineering

MYP Entrepreneurship
Introduction



Arts

MYP Music I/II

MYP Orchestra I/II

Drama I/II

Visual Arts: 2 D Design

10th Grade Course Selection

Arts

MYP Music

MYP Orchestra

Drama I/II

Comp Theater

Visual Arts 3D Arts

Visual Arts Photography

Sciences

Physics (requirement for DP physics/ 3rd lab science for flexibility in DP Sciences choices) Can also be taken (for fee) during the summer session.

Physical Education

Design

MYP Computer Science Introduction or Advanced

MYP Design PLTW Intro to Eng. or PLTW Principles of Engineering

MYP Entrepreneurship Introduction or Advanced

Curricular Choices: 10th Grade



Goal: Med School

Physics



Goal: Engineer

Design Engineering
Physics



Goal: Artist

2 Arts courses

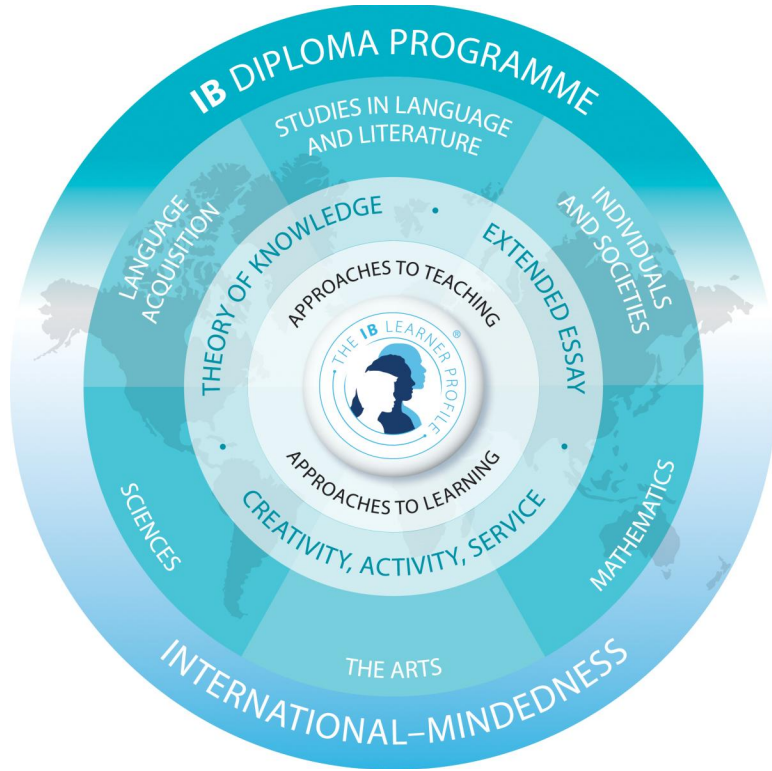


Goal: Future Entrepreneur/
Business

2 Design courses

Designing your Future

Curricular Choices: 11th & 12th



Resources:

- Classroom teachers
- Department Chairs
- MYP, DP & CP coordinators
- College Counselors
- US Administration

IB DP & CP

Programme Models

PYP



MYP



DP



CP



programmes that promote . . .

INTERNATIONAL-MINDEDNESS *including* MULTILINGUALISM
ACTIVE, STUDENT-CENTERED LEARNING
AUTHENTIC, CRITERION-RELATED ASSESSMENT

inspiring lifelong learners who become more . . .

INQUIRING

KNOWLEDGEABLE

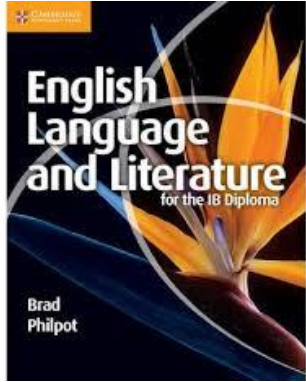
CARING



International Baccalaureate
Baccalaureat International
Bachillerato Internacional

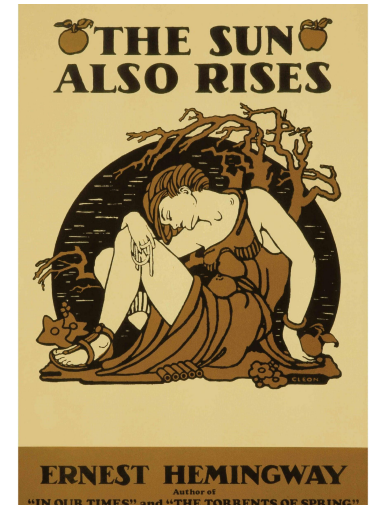
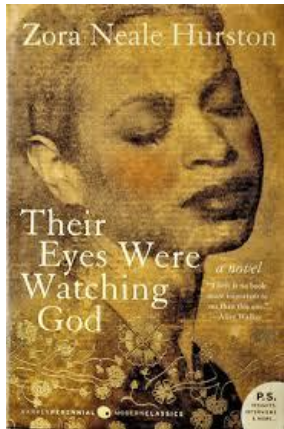
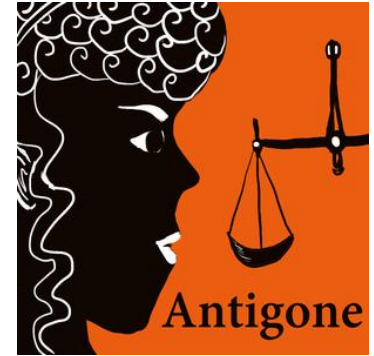
© International Baccalaureate Organization 2014

Group 1: Literature

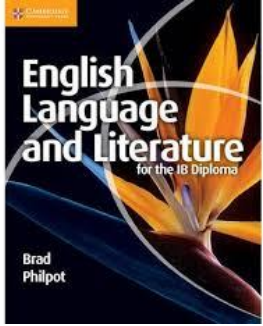


IB Literature

The IB Diploma Programme language A: literature course develops understanding of the techniques involved in literary criticism and promotes the ability to form independent literary judgments. In language A: literature, the formal analysis of texts and wide coverage of a variety of literature—both in the language of the subject and in translated texts from other cultural domains—is combined with a study of the way literary conventions shape responses to texts.

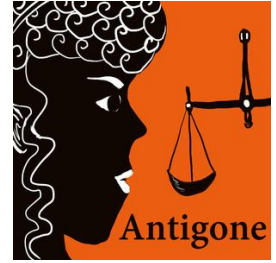


Group 1: Language & Literature

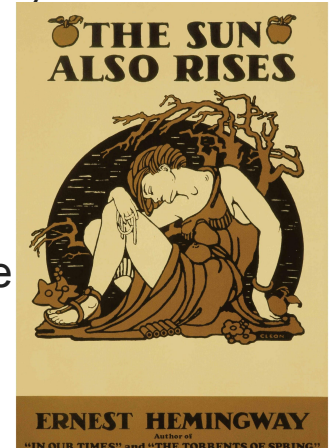
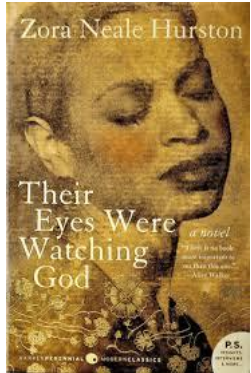


IB Language & Literature

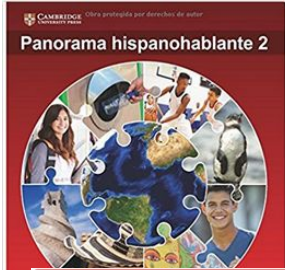
Language and literature comprises four parts—two relate to the study of language and two to the study of literature.



The study of the texts produced in a language is central to an active engagement with language and culture and, by extension, to how we see and understand the world in which we live. A key aim of the language A: language and literature course is to encourage students to question the meaning generated by language and texts, which, it can be argued, is rarely straightforward and unambiguous. Helping students to focus closely on the language of the texts they study and to become aware of the role of each text's wider context in shaping its meaning is central to the course.



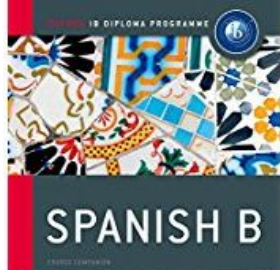
Group 2: Language Acquisition



Panorama francophone 1



Ab Initio



HL/SL

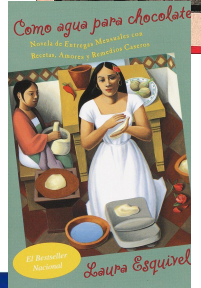
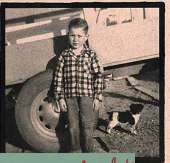
These courses are designed to provide students with the necessary skills and intercultural understanding to enable them to communicate successfully in an environment where the language studied is spoken.

Students develop their ability to communicate through the study of language, themes and texts.



Éric-Emmanuel Schmitt
Oscar et la dame r

Cajas de cartón
relatos de la vida peruana
de un niño campesino



ANTOINE DE SAINT-EXUPÉRY
Le Petit Prince

Group 3: Individuals & Societies

The Diploma Programme (DP) history course is a world history course based on a comparative, multi-perspective approach to history and focuses around key historical concepts such as change, causation and significance. It involves the study of a variety of types of history, including political, economic, social and cultural, encouraging students to think historically and to develop historical skills.

**History of the Americas/ 20th
Century History**

The global politics course allows students to develop an understanding of the local, national, international and global dimensions of political activity, as well as allowing them the opportunity to explore political issues affecting their own lives.

Global Politics

Group 3: Individuals & Societies

The IB Diploma Programme psychology course is the systematic study of behaviour and mental processes.

The psychology course examines the interaction of biological, cognitive and sociocultural influences on human behaviour.

Psychology

The business management course is designed to develop students' knowledge and understanding of business management theories, as well as their ability to apply a range of tools and techniques.

Business Management

Group 4: Sciences

Biology investigates the living world at all levels using many different approaches and techniques.

At one end of the scale is the cell, its molecular construction and complex metabolic reactions. At the other end of the scale biologists investigate the interactions that make whole ecosystems function.

Biology

Chemistry is an experimental science that combines academic study with the acquisition of practical and investigational skills.

It is often called the central science as chemical principles underpin both the physical environment in which we live and all biological systems.

Chemistry

Group 4: Sciences

Physics is the most fundamental of the experimental sciences, as it seeks to explain the universe itself from the very smallest particles to the vast distances between galaxies.

Despite the exciting and extraordinary development of ideas throughout the history of physics, observations remain essential to the very core of the subject. Models are developed to try to understand observations, and these themselves can become theories that attempt to explain the observations.

Physics

Through studying environmental systems and societies (ES&S) students will be provided with a coherent perspective of the interrelationships between environmental systems and societies; one that enables them to adopt an informed personal response to the wide range of pressing environmental issues that they will inevitably come to face.

The teaching approach is such that students are allowed to evaluate the scientific, ethical and socio-political aspects of issues.

Environmental Systems & Societies

Group 4: Sciences*

The IB computer science course is a rigorous and practical problem-solving discipline. Computational thinking lies at the heart of the course and is integrated with other topics. This will be supported by practical activities including programming.

Computer Science

Sports, Exercise & Health Science incorporates the traditional disciplines of anatomy and physiology, biomechanics, psychology and nutrition, which are studied in the context of sports, exercise and health. Students will cover a range of core and option topics, and carry out practical (experimental) investigations in both laboratory and field setting.

Sports, Exercise & Health Science

*These are available as primary science classes to students who are also taking a lab science or who have satisfied the lab science requirements in 10th grade.

Group 5: Mathematics

	Applications and Interpretations 150 hours	Analysis and Approaches SL 150 hours	Analysis and Approaches HL 240 hours
Part 1	Number and Algebra 16hrs Functions 31hrs Geometry and Trigonometry 18hrs	Number and Algebra 19hrs Functions 21hrs Geometry and Trigonometry 25hrs	Number and Algebra 39hrs Functions 32 hrs Geometry and Trigonometry 51hrs
Part 2	Probability and Statistics 36hrs	Calculus 28hrs	Calculus 55hrs
Part 3	Calculus 19hrs Internal Assessment and Tool kit 30hrs	Probability and Statistics 27hrs Internal Assessment and Tool kit 30hrs	Probability and Statistics 33hrs Internal Assessment and Tool kit 30hrs
Part 4	Internal Assessment continued Review for exams	Internal Assessment continued Review for exams	Internal Assessment Review for exams

Group 6: Arts

Students create, participate in, and reflect upon music from their own background and those of others. Both standard level (SL) and higher level (HL) music students are required to study musical perception.

Music



Visual Arts

The course is designed for students who want to go on to study visual arts in higher education as well as for those who are seeking lifelong enrichment through visual arts.

Theatre

Theatre is a practical subject that encourages discovery through experimentation, the taking of risks, and the presentation of ideas to others. It results in the development of both theatre and life skills; the building of confidence, creativity and working collaboratively.



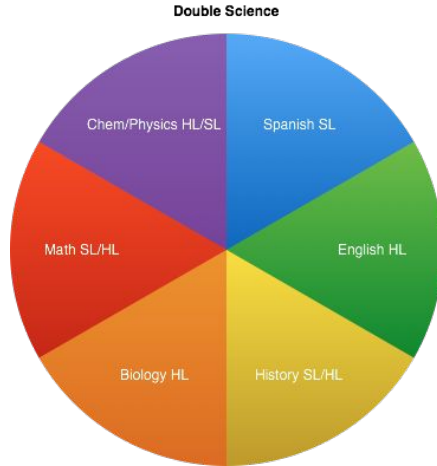
Curricular Choices



Goal: Med School

CAS: Moffit, Soccer

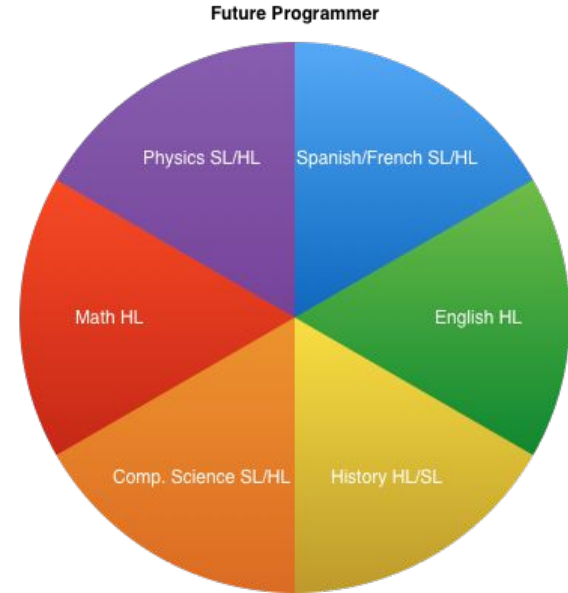
Bio EE: Mitochondrial
Triggers of Melanoma



Goal: MIT

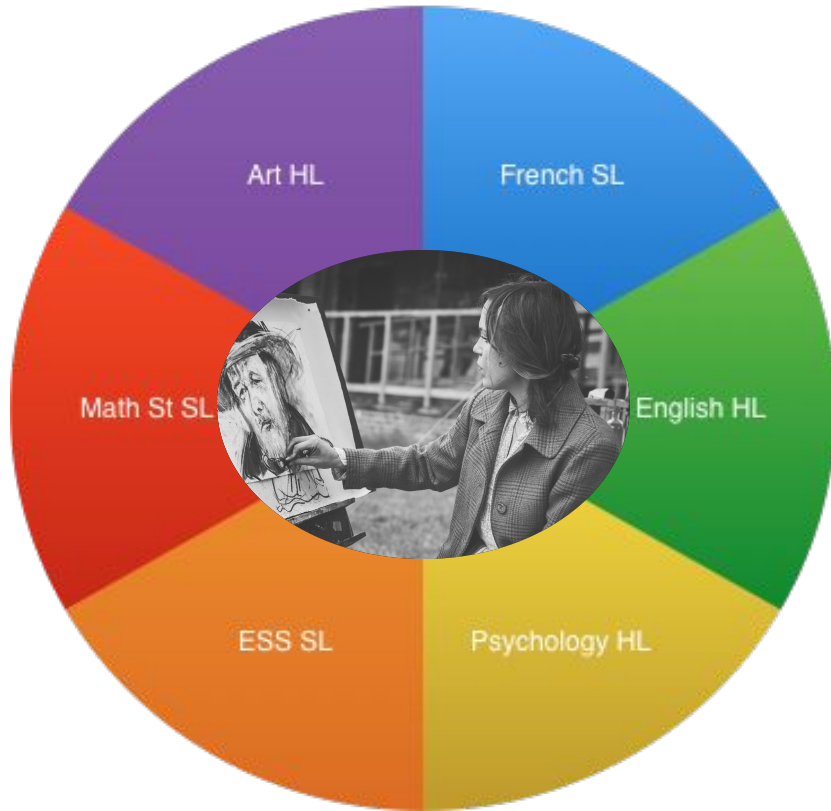
CAS: Robotics,
Coding Dojo

Math EE: Processing
Speed & Heat

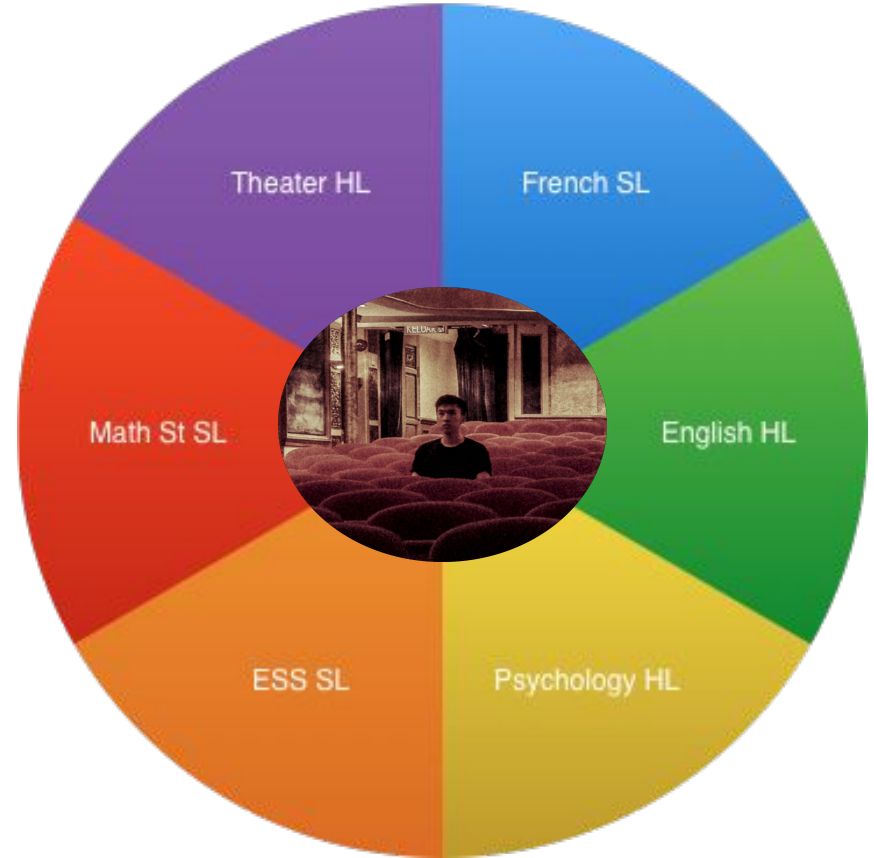


Designing your Future

Future Artist



Future Actor

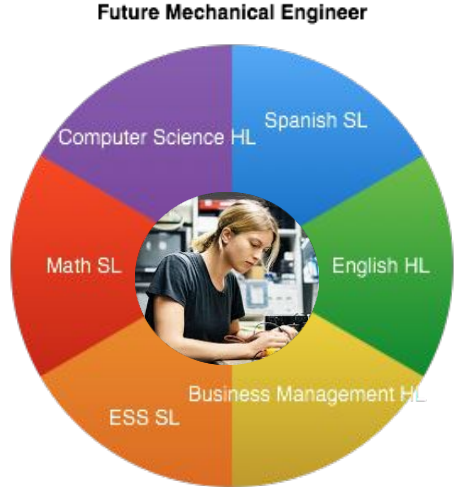
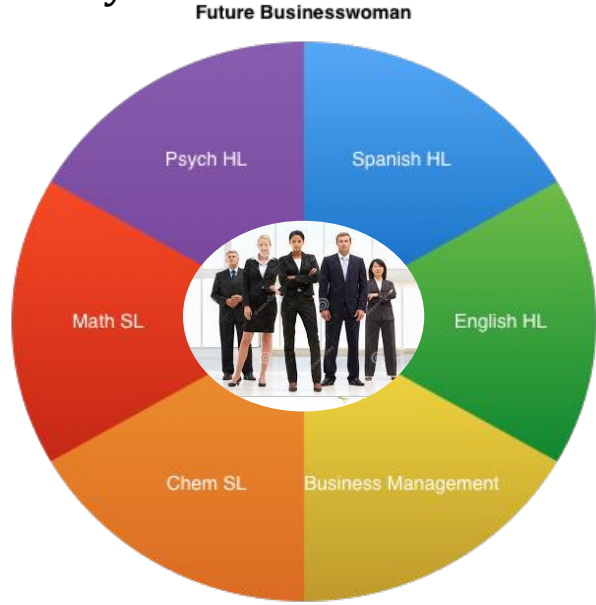


Creative Arts



MYP 1-5 Design Tech

The mission of CDS is to create entrepreneurial thinkers for a global society.



Design Tech & Entrepreneurship



WHAT is CP?

...and WHY is it coming to CDS?



The IB Career-related Programme (CP) is for students, age 16–19 years, who wish to focus on career-related learning in the last two years of secondary school. The CP combines the highly regarded and academically challenging courses from the IB Diploma Programme (DP) with practical, real-world approaches to learning. All of the elements of the CP help students develop the communication, personal, and academic skills necessary to succeed in a rapidly changing world.



ibo.org
CP for Parents

Who is eligible for CP?



Class of 2021...and after

Class of 2021 will have the option to select the CP Path or DP at the end of their sophomore year. No student can move into CP after semester 1 of the junior year.





The IB CP Core

The CP core enhances student's personal and interpersonal development, with an emphasis on experiential learning.

The CP core bridges the IB academic courses and the career-related study and provides students with a combination of academic and practical skills.

These four interrelated components form the core.

Personal and Professional Skills (PPS)

This is a 2-semester course. CP students take PPS rather than Theory of Knowledge (TOK)

Service Learning (SL)

CP students gain at least 50 SL hours rather than CAS hours. CP skills are used to meet an identified community need.

Language Development

CP students continue to take their chosen world language (DP courses) throughout the program

Reflective Project (RP)

CP students identify, analyze, critically discuss and evaluate an ethical issue arising from their studies rather than writing an extended essay (EE)

Comparison in “numbers”

CP	DP
Personal Professional Skills 90 hours 5 themes	TOK 100 hours 8 WOKs (use 4) 6 AOKs
Language Development 50 hours portfolio	World Language 4 years
Service Learning 50 hours ongoing portfolio 5 learning outcomes	CAS 18 months portfolio 7 learning outcomes
Reflective Project 50 hours *RPPF (1000 words)	EE Approximately 40 hours *RPPF (500 words)

*Reflections on Planning and Progress Form

All IB CP Students Participate in

The CP Core *and*

DP Courses

All academic subject courses are DP courses, with no requirement in the number of Standard or Higher level subjects required.

Career Pathways (select 1)

- Drama, Music, Art
- Sports Medicine or Management
- Engineering (2020-21)
(Project Lead the Way)



Drama, Music or Art Pathway



01

3 - 4 DP courses each year

02

Internship Opportunities

Students may have the option to engage in a semester-long internship with local agencies.

03

Summer Certification

Students may earn certification in their artistic area through a college-level Dual Enrollment course.

04

Reflective Project and Service Learning

Students will engage in interest-specific projects and service.



Sports Medicine or Management Pathway

Marketing
Physical
Science **Money**
Anatomy **Games**
Exercise
Business
Sports **Bones** **Strength**
Athletes
Competition
Promotion

01

3 - 4 DP courses each year

02

Internship Opportunities

Students may have the option to engage in a semester-long internship with local agencies.

03

Certification

Students will have the option to earn health and/or business-related certifications

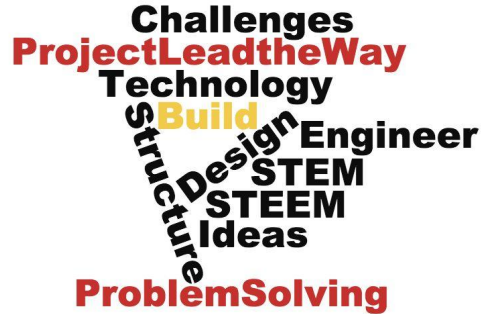
04

Reflective Project and Service Learning

Students will engage in interest-specific projects and service.



Engineering Pathway (2020-2021)



01

3 - 4 DP courses each year

02

Internship Opportunities

Students may have the option to engage in a semester-long internship with local agencies.

03

Certification

Students will earn certification through Project Lead the Way.

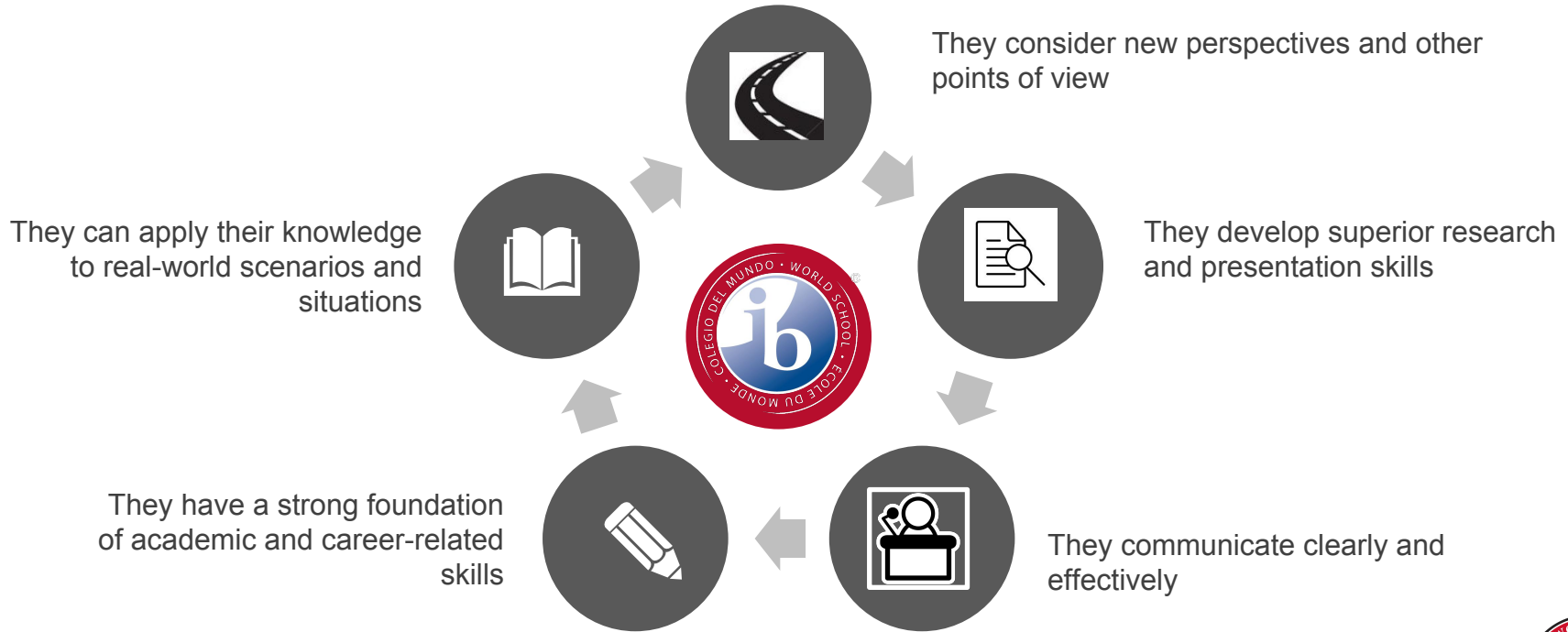
04

Reflective Project and Service Learning

Students will engage in interest-specific projects and service.



What Makes CP Students Unique?



How do students earn the CP certificate?

The **Certificate of the Career-related Programme of the International Baccalaureate** will be awarded subject to satisfactory completion of the following requirements:

- ❖ completed the **specified career-related study**.
- ❖ been awarded a **grade 3 or more in at least two of the IB courses** registered for the Career-related Programme.
- ❖ been awarded a grade of **at least D for the reflective project**.
- ❖ met the personal and professional skills, language development service learning, requirements.
- ❖ been awarded a grade of **at least D for the reflective project**.
- ❖ not received a penalty for academic misconduct.



College after IBCP

Colleges & Universities regard the IBCP curriculum positively

Through the International Baccalaureate® (IB) Career-related Programme (CP), students deepen their understanding in general areas of knowledge, engaging in a holistic education model that fosters an enthusiasm for lifelong learning. The CP experience reduces the “academic -vs- practical” divide.

As a result of the programme, students develop the self-confidence and skills to participate successfully in higher education.

Students complete IBDP courses while in the program and may sit for those IB exams to earn college credit.

The CP Core provides opportunities for education in ethics and codes of behaviour highly regarded by post-secondary institutions.

Achievement and academic integrity are validated by outside/3rd party evaluation.

The Reflective Project provides experience in the type of undergraduate research top tier universities expose students to.





Good News for IBCP Graduates!*

A 2017 Study published in the Journal of Vocational Education and Training examined the patterns of higher education enrollment, destinations and persistence of all CP graduates from secondary schools in the US between 2013 and 2015.

CP graduates enroll and persist in universities at higher rates than the national average

They also tend to major in high-earning, career-oriented fields* such as:

- engineering (18%)
- business (17%)
- health sciences (15%)

CP graduates attend selective higher education institutions

Of the CP graduates who chose four-year institutions, more than half (55%) enrolled at a university ranked by Barron's Selectivity Index as "very competitive" or better.



CP graduates persist in their higher education at higher rates than the national average

93% of CP graduates at 4-year institutions persisted for one year, as compared to 82% nationally in 2014. Once CP graduates enrolled, 89% return for their sophomore year, which is 17% higher than the national average (72% in 2014).



Next Steps

February

- Student education
- Distribution of registration documents
- Parent Q & A Drop Ins
 - February 8 @ 7:45 am
- Appointment by request with CC or IB MYP, CP, or DP Coordinators

March 1: Registration Deadline