



COVID-19 Recovery Key Initiatives & Federal/State Reopening Guidelines

Update to Virginia Beach City Council
May 12, 2020

Forward Virginia: Phase One

	NOW	PHASE ONE
NON-ESSENTIAL RETAIL	 Open with 10 person limit	 Open with 50% capacity
RESTAURANTS AND BEVERAGE SERVICES	 Takeout and delivery	 Takeout and delivery; outdoor seating at 50% capacity
ENTERTAINMENT AND PUBLIC AMUSEMENT	 Closed	 Closed
FITNESS AND EXERCISE	 Closed	 Closed (limited to outdoor fitness classes)
BEACHES	 Exercise and fishing only	 Exercise and fishing only
GATHERINGS	 10 person limit	 10 person limit
TELEWORKING	 Strongly encouraged	 Strongly encouraged
FACE COVERINGS	 Strongly encouraged	 Strongly encouraged
CHILDCARE	 Open for working families	 Open for working families
PLACES OF WORSHIP	 Drive-in services; 10 person limit	 Drive-in services; 50% capacity
PERSONAL GROOMING	 Closed	 Appointment only
PRIVATE CAMPGROUNDS	 Closed	 Open
OVERNIGHT SUMMER CAMPS	 Closed	 Closed
STATE PARKS	 Day use only	 Day use; Overnight in phases
SCHOOLS	 Closed	 Closed

	PHASE ONE		PHASE TWO			PHASE THREE	
	MAY	JUNE	JULY	AUGUST	SEPTEMBER	OCTOBER	NOVEMBER
City of Virginia Beach Employees	Continue Teleworking/Rotating Schedule Self-Monitoring of Employees Accommodations for the Vulnerable Populations Common Areas (No More than 10 or 6ft.) Minimize Non-Essential Travel Open Customer Service Locations in a phased approach (physical distancing) Require Public to wear face coverings Enhanced Cleaning		Continue Teleworking/Rotating Schedule Self-Monitoring of Employees Accommodations for the Vulnerable Populations Common Areas (No More than 50) Minimize Non-Essential Travel Re-open Customer Service Locations Require Public to wear face coverings Enhanced Cleaning			All City Facilities open Continue Telework in accordance with city policy Vulnerable populations can resume public interactions with physical distancing and minimizing exposures when distancing can't be practiced Enhanced cleaning	
Large Venues, Theaters and Churches	Strict Physical Distancing Enhanced Cleaning protocols		Strict Physical Distancing Enhanced Cleaning protocols			Unrestricted Enhanced Cleaning protocols	
Gyms	Strict Physical Distancing Enhanced Cleaning protocols		Strict Physical Distancing Enhanced Cleaning protocols			Unrestricted Enhanced Cleaning protocols	
Schools, Youth Activities	Limited Childcare No Summer Camps		Childcare Summer Camps			Unrestricted	
Beaches	Open with Ambassador Program Strict Physical Distancing No more than 10 in a gathering Enhanced Cleaning of bathrooms, showers, and water fountains		Continue with Ambassador Program Continued physical distancing No more than 50 in a gathering Enhanced Cleaning of bathrooms, showers and water fountains			Unrestricted	

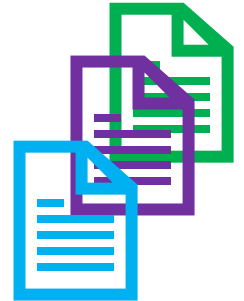
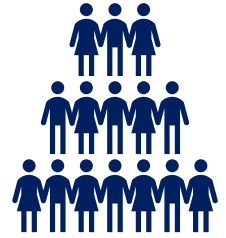
City Operations and Workforce

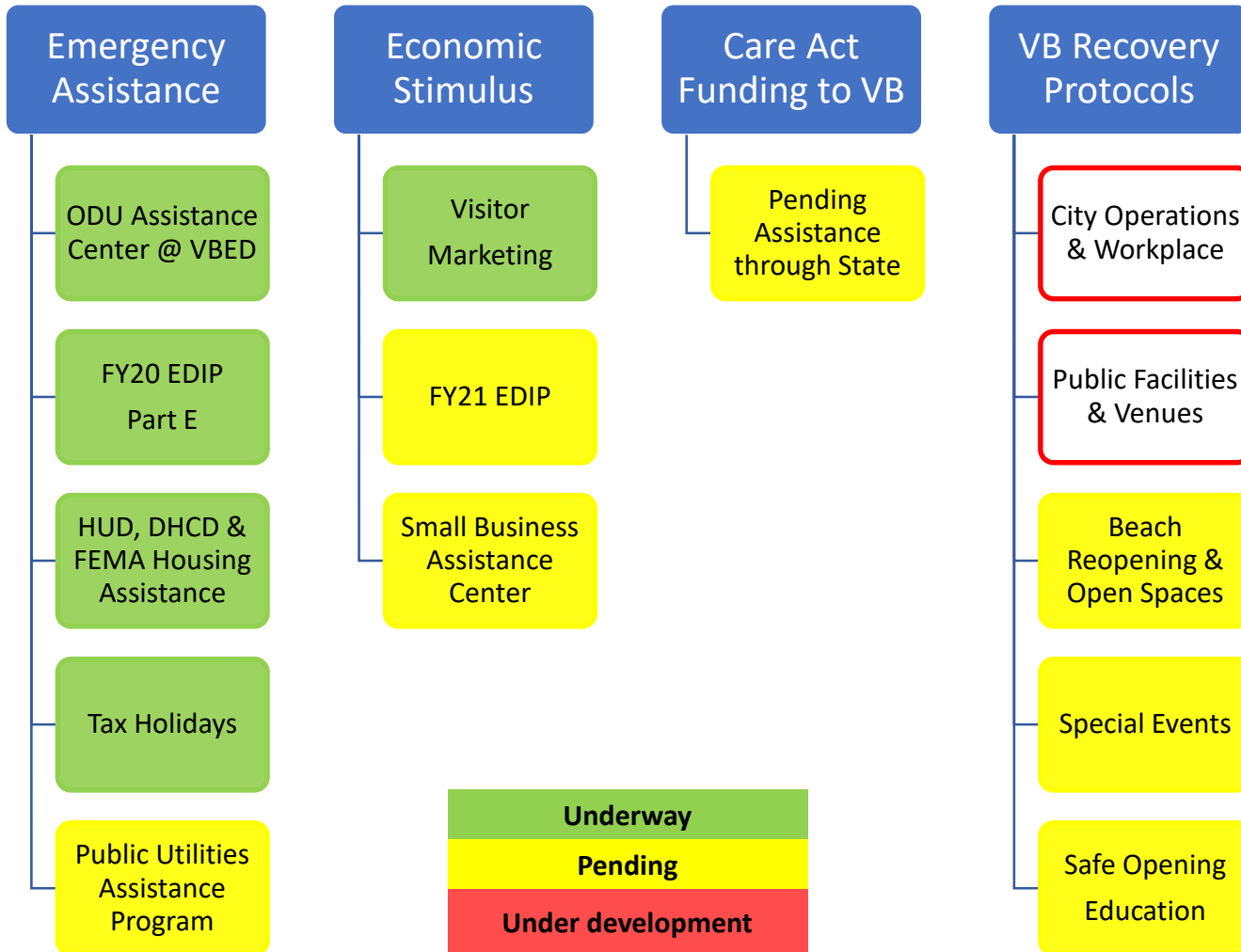
As we navigate the reopening of the City to the public there are **key issues** that will need to be in place:

- PPE and barrier protection for our workforce
- Capacity and support for enhanced cleaning as we return
- Development of monitoring (self) process for staff
- Guidance for the public entering locations in the city
- Updates to policies and procedures as we return to a “new normal”
- Determining priority of opening and the appropriate timeline

Return to Work does not mean abandoning Teleworking

Return to Work does mean a deliberate and well throughout plan to alleviate any fear of returning to work.

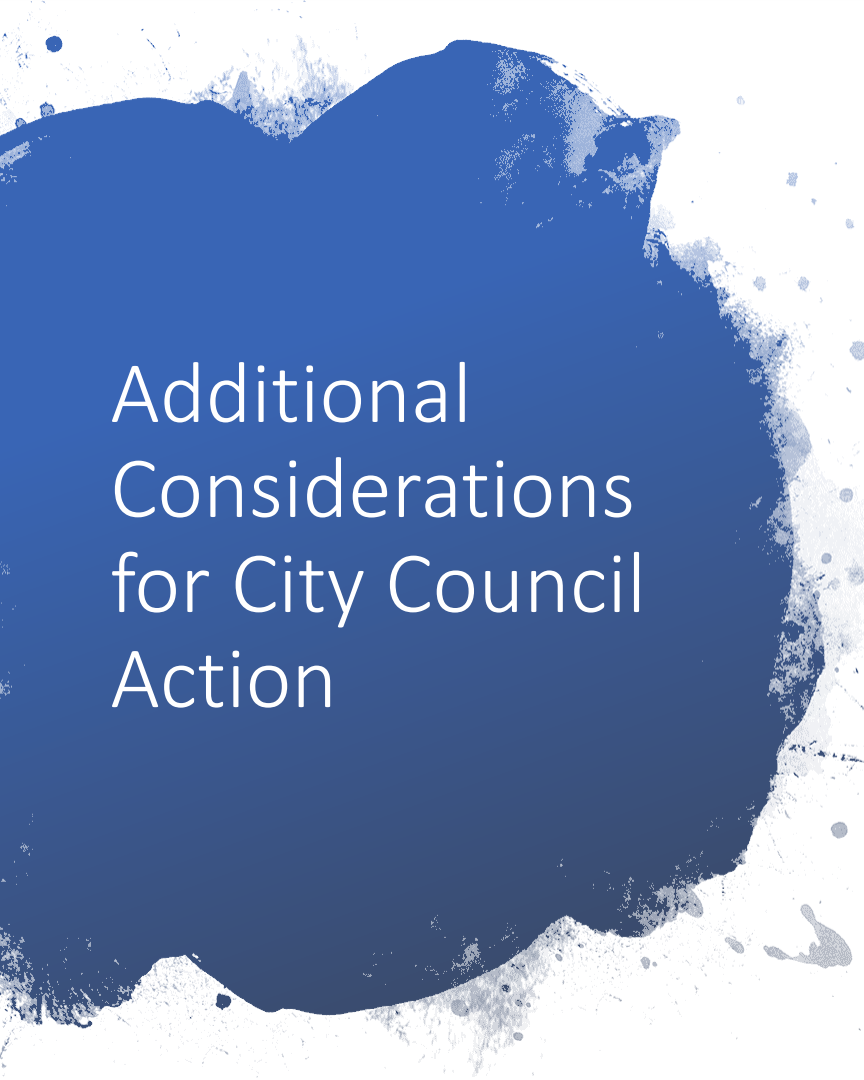






Additional Funding Assistance

1. The CARES Act will provide approximately \$34 M to the City through the Commonwealth
 - Staff will review for eligible uses and make recommendations for City Council consideration such as additional assistance programs
2. Approximately \$3.5 M in HUD CDBG and HOME program allocations can be reprogrammed from previous years for additional Housing Assistance
 - Staff will provide recommendations for City Council consideration in this Friday's package that includes an update on the current applicant pool




Additional Considerations for City Council Action

1. Adopt ordinance to authorize waiver of café franchise fees due to the closure during COVID-19 Pandemic
2. Support restaurants desiring to operate under Commonwealth's outdoor dining restrictions by temporarily repealing or waiving certain local ordinances to allow for:
 - Dining on public sidewalks, boardwalk connector parks & greenbelt or private parking lots while maintaining ADA compliance in coordination with VA ABC & Health Department
 - Development of a “parklet” program in parking spaces in public right-of-way



Beach Reopening Plan (Revised)

Proposal Pending Guidance from
Commonwealth of Virginia
May 2020





Reopening the Beaches

Welcoming everyone to the Virginia Beach beaches is the priority of our city. Virginia Beach is committed to this goal in a way that's safe for our residents, visitors and the thousands of frontline staff who bring the beaches to life.

Reopening the beaches safely will require a coordinated effort that focuses on three key components: cleaning high-touch surfaces, educating guests on how they can enjoy the beach with physical distancing and enforcing healthy guidelines through interaction with “Beach Ambassadors.”



Pillars of Phase One Reopening

CLEANING

DISTANCING

EDUCATION

ENFORCEMENT



Beach Reopening Strategies

The following strategies will be utilized to support the pillars of Phase One Reopening:

- Divide the oceanfront, bayfront, and Sandbridge into manageable “zones,” or areas of engagement & enforcement including the bike path and boardwalk
- Deploy Clean Teams to work in shifts to clean “high-touch areas”, restrooms and shower towers
- Deploy Beach Ambassadors to serve as frontline for enforcement of safe distancing on the beaches
- Post collateral education materials throughout resort area, with emphasis at all beach access points



ZONES

Bay Front – 1-2

North End – 3-5

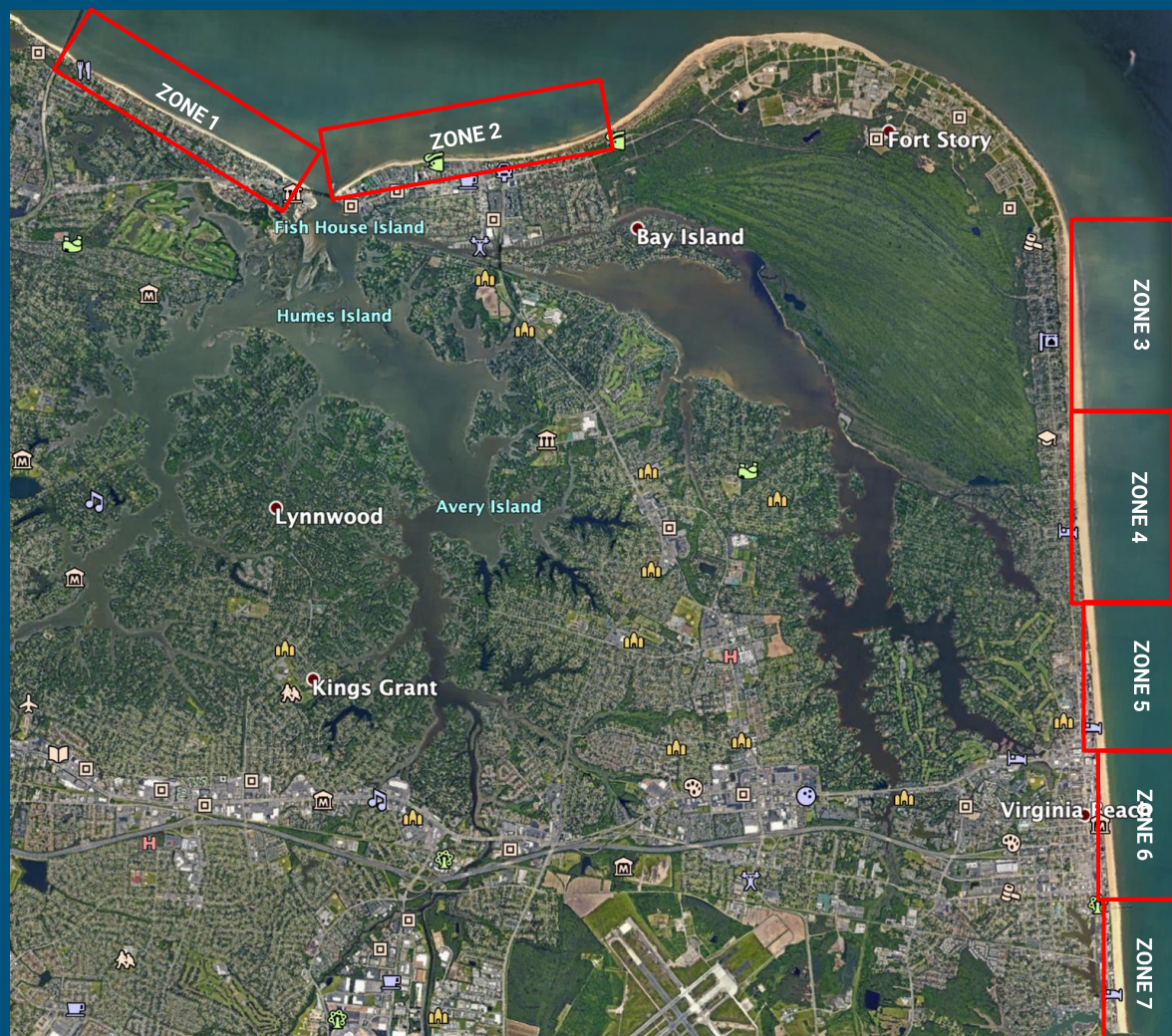
Oceanfront – 6-7

Croatan – 8

(not pictured)

Sandbridge – 9-11

(not pictured)





AREAS OF ENGAGEMENT

Virginia Beach Oceanfront

From 40th Street to Rudee Loop

- Atlantic Ave East and West Sides of the Street
- Bike Path
- Boardwalk
- Beach

Bay Front

From Bridge Tunnel to the Lesner Bridge

From Lesner Bridge to First Landing State Park

- Roaming Beach Ambassadors only

North End

From 40th to 89th Street

- Roaming Beach Ambassadors only

Croatan

From Rudee Inlet to Camp Pendleton

- Roaming Beach Ambassadors only

Sandbridge

From S. Bullpup ST to end of Little Island Park

- Focus on Public Beach Market Place Area where Lifeguards are in service
- Little Island Park



CLEANING

CLEAN TEAMS:

- ❑ Cleaning staff will work in 2-person teams with one floater relief team. Cleaning will be from 8:00 am to 6:00 pm Mon-Thurs and 7:00 am to 7:00 pm Fri-Sun.
- ❑ At the Oceanfront, teams will cover 5-block area from the Boardwalk and Atlantic Avenue.
- ❑ Teams will be wiping & spraying down high-touch surfaces such as water fountains, foot washes, crosswalk buttons, and magazine bins on Atlantic.
- ❑ Power wash formal beach access points at Sandbridge and Bay Front Beaches.



CLEANING

SUPPLIES:

- ❑ Uniforms in high-visibility colors that mirror messaging from education collateral
- ❑ Disposable gloves
- ❑ Masks (for staff)
- ❑ Paper towels
- ❑ Bulk disinfectant liquid per CDC guidelines
- ❑ Garbage bags
- ❑ 10' storage container located near 10th ST
- ❑ Garbage cans on wheels
- ❑ High volume sprayers

SAMPLE SCHEDULE:

ZONE	LOCATION	QTY	MON	TUES	WED	THURS	FRI	SAT	SUN
ZONE 1-4	Bay Shore & North End	TBD							
ZONE 5-7	1ST-5TH	2	8AM-6PM	8AM-6PM	8AM-6PM	8AM-6PM			
	6TH-10TH	2	8AM-6PM	8AM-6PM	8AM-6PM	8AM-6PM			
	11TH-15TH	2	8AM-6PM	8AM-6PM	8AM-6PM	8AM-6PM			
	16TH-20TH	3	8AM-6PM	8AM-6PM	8AM-6PM	8AM-6PM			
	21ST-25TH	2	8AM-6PM	8AM-6PM	8AM-6PM	8AM-6PM			
	26TH-30TH	2	8AM-6PM	8AM-6PM	8AM-6PM	8AM-6PM			
	31ST-35TH	2	8AM-6PM	8AM-6PM	8AM-6PM	8AM-6PM			
	36TH-40TH	3	8AM-6PM	8AM-6PM	8AM-6PM	8AM-6PM			
ZONE 5-7	1ST-5TH	2					7AM-7PM	7AM-7PM	7AM-7PM
	6TH-10TH	2					7AM-7PM	7AM-7PM	7AM-7PM
	11TH-15TH	2					7AM-7PM	7AM-7PM	7AM-7PM
	16TH-20TH	3					7AM-7PM	7AM-7PM	7AM-7PM
	21ST-25TH	2					7AM-7PM	7AM-7PM	7AM-7PM
	26TH-30TH	2					7AM-7PM	7AM-7PM	7AM-7PM
	31ST-35TH	2					7AM-7PM	7AM-7PM	7AM-7PM
	36TH-40TH	3					7AM-7PM	7AM-7PM	7AM-7PM
ZONE 8-9	Sandbridge	TBD							



DISTANCING

- ❑ Beachgoers will be required to practice physical distancing
- ❑ Groups of more than 10 beachgoers will be prohibited
- ❑ Parking garages and surface lots will be limited to 50% capacity. If the density of beachgoers increases on the beach near parking facility, then parking capacity will be reduced in real time through Beach Ambassador communication
- ❑ Additional on street parking will be utilized to further disperse visitors throughout resort
- ❑ No entertainment or programming that generate mass gatherings will be permitted
- ❑ Beach playsets will remain closed

EDUCATION COLLATERAL

- ❑ 70 Boardwalk 4'x8' frames with mesh banners
- ❑ Beach Access poster cases at each street
- ❑ 7x7x13 steel towers with mesh signs on the beach
- ❑ Coroplast metal yard signs on greenbelts and beach
- ❑ Boardwalk and sidewalk decals
- ❑ Window cling signage at all retail, restaurants, attractions, and hotels
- ❑ Front Desk and In-Room signage for hotel & motels servicing the beach
- ❑ Tabletop signage for restaurants and café seating
- ❑ Signage at parking lots and garages
- ❑ Mobile video screen truck with messaging
- ❑ Social media outreach
- ❑ Aerial banner messaging
- ❑ LED traffic message boards



It's in Your Hands.



We have the power to stop the spread.

What You Can Do

Keep your distance

Stay 6 feet away from others

Unless you're from the same household.



Limit groups

No more than 10 people



Cover your cough

Cough into your elbow or use a tissue to keep germs from spreading



smart, savvy+ safe.



We have the power to stop the spread.

Beach Rules

Keep your distance

Stay 6 feet away from others

Unless you're from the same household.



Limit groups

No more than 10 people



Cover your cough

Cough into your elbow or use a tissue to keep germs from spreading



Respect the rules

Beach Ambassadors are here to ensure we provide a safe space that helps everyone stay healthy



smart, savvy+ safe.



We have the power to stop the spread.

Beach Rules

Keep your distance

Stay 6 feet away from others

Unless you're from the same household.



Limit groups

No more than 10 people



Cover your cough

Cough into your elbow or use a tissue to keep germs from spreading



Respect the rules

Beach Ambassadors are here to ensure we provide safe space that helps everyone stay healthy







ENFORCEMENT

- ❑ Beach Ambassadors will provide friendly visual “reminders” to guests about physical distancing and are the frontline engagement with beachgoers
- ❑ When ambassadors encounter individuals or groups that are not distancing, they will ask for voluntary compliance to spread out
- ❑ If voluntary compliance is not achieved, Beach Ambassador will request assistance from Police Department for enforcement
- ❑ Public safety will monitor crowd density on beaches and in water via routine patrols, drone surveillance, overhead camera integration and marine boat patrols
- ❑ If overcrowding occurs, Public safety will initiate temporary beach closures

Police Drone Operator surveilling crowd density

Police Officer responding to Ambassador request for enforcement

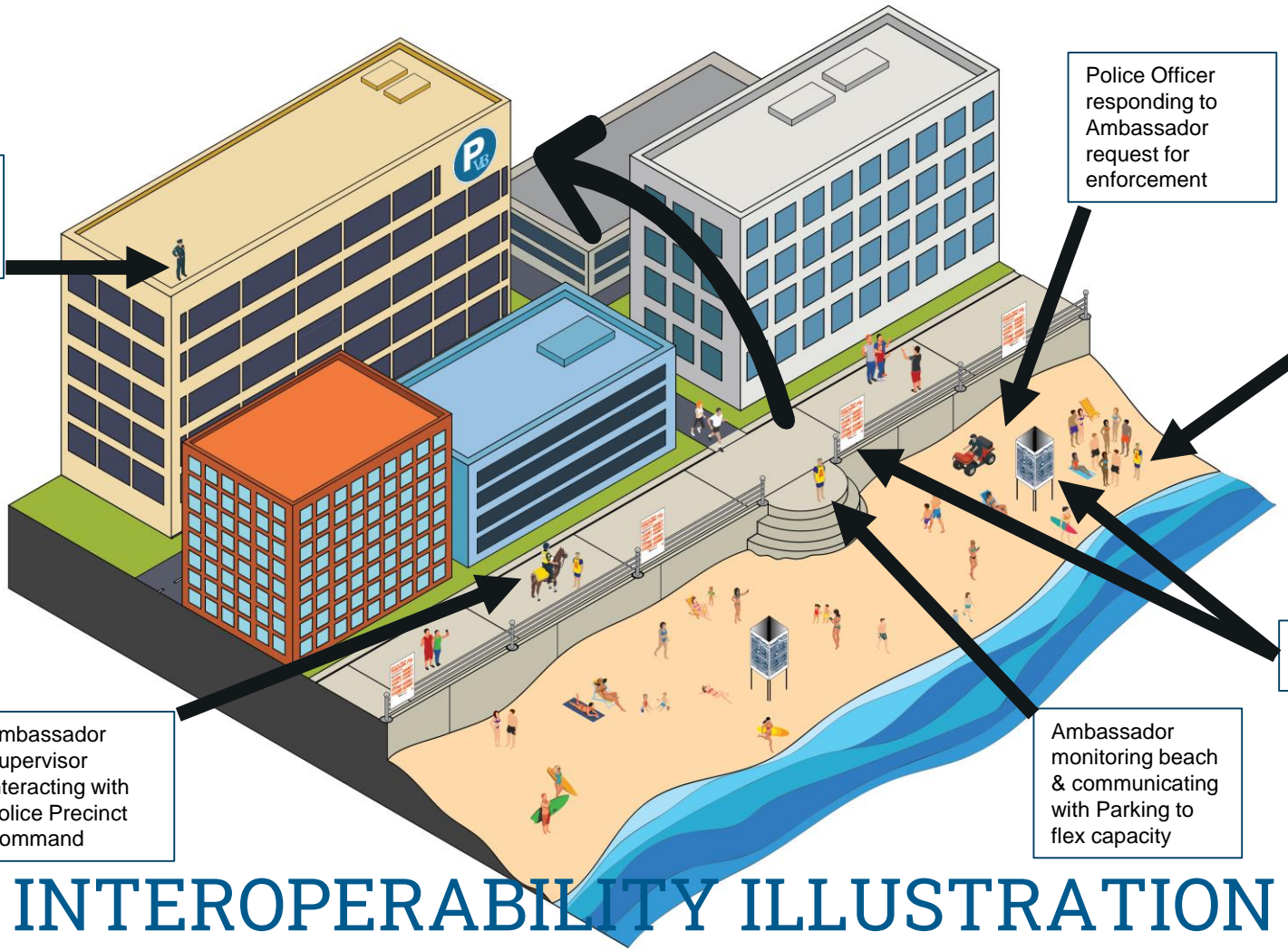
Ambassador requesting enforcement due to crowding

Education collateral banners

Ambassador Supervisor Interacting with Police Precinct Command

Ambassador monitoring beach & communicating with Parking to flex capacity

INTEROPERABILITY ILLUSTRATION





TIMELINE

Prepare

- Identify labor, equipment & supply vendors
- Produce all training materials
- Produce education collateral

Train

- Paper and practical virtual classroom training
- On beach scenario development during restricted exercise/fishing period

Execute

Ready to execute Memorial Weekend