



COVR-C1203

Dual Band Whole Home Wi-Fi System





Covr your Whole Home in **Seamless Wi-Fi**

Introducing Covr, the seamless Wi-Fi solution that's the perfect fit for your modern home. It blankets every square inch of your home with high speed AC1200 Dual-Band Wi-Fi. With Covr, you enjoy Wi-Fi that's stable, consistent, and truly seamless.



HIGH PERFORMANCE

With 1,200 Mbps Wi-Fi, MU-MIMO technologies, and 2x3 (Rx) antennas at its core, Covr provides enough speed to support multiple devices undertaking data-intensive tasks simultaneously no matter where they are in the house.





MORE COVERAGE

Covr's three discreet Covr Points cover up to 5000 sq. ft - enough seamless Wi-Fi coverage for a wide variety of housing sizes and configurations. Wi-Fi dead zones are now a thing of the past.



ONE SEAMLESS NETWORK

With Covr, there's just one wireless network name (SSID) for your entire home, no matter where you are.



Smart Roaming



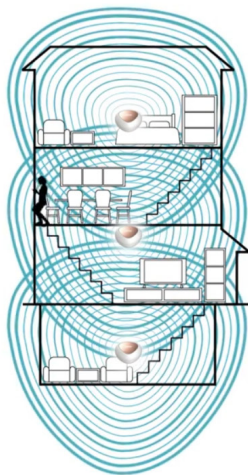
Gone are the days of only being able to use Wi-Fi in certain areas of your home: Smart roaming lets you move around the house while always being connected to the **strongest signal** available. Forget about traditional Wi-Fi extenders which require you to connect to different networks as you move around - Covr ensures your entire home is covered by a **single, seamless network**.

Having **one Wi-Fi name** (SSID) means once you connect, your connection is seamlessly maintained as you and your wireless devices roam around your home. As you move from room to room and floor to floor you'll experience uninterrupted Wi-Fi. Buffering, drop-outs and deadspots are now a thing of the past.

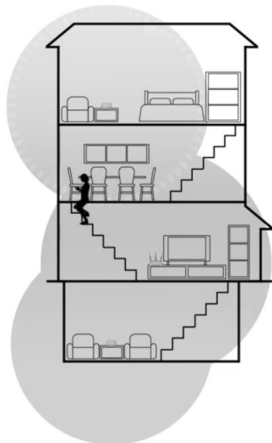


COVR

SEAMLESS NETWORK



Other Home Wi-Fi





Wi-Fi that Meets Your Needs

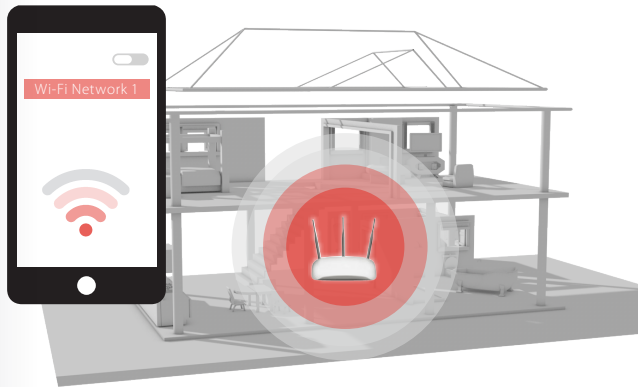


Whether it's HD video streaming, video chats, or smart home devices, Covr responds to the need for speed in the modern home as consumers perform more data-intensive tasks on their Wi-Fi connected devices.

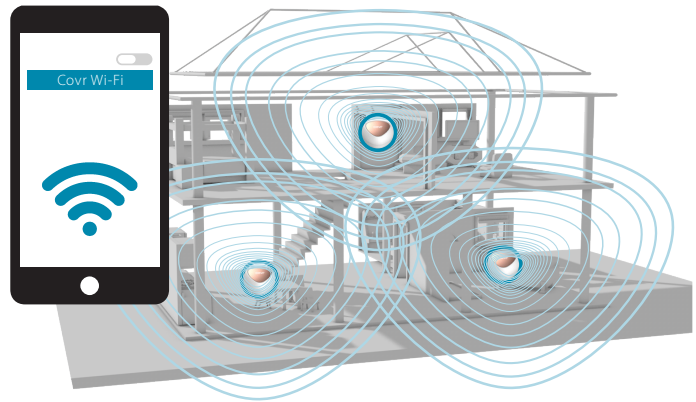
Seamless Wi-Fi in Every Corner



Unlike other whole home Wi-Fi systems that use only 2 receiving antennas, Covr has 3 receiving antennas to detect and receive more data from all your devices. You enjoy seamless connectivity no matter where you are in the house.



Traditional Wi-Fi Routers

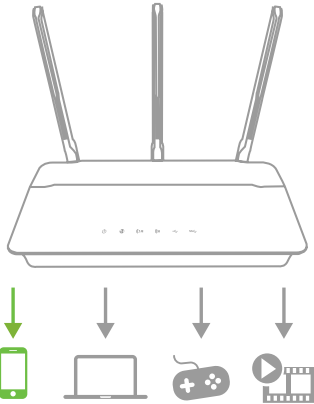


Covr Dual Band Whole Home Wi-Fi System

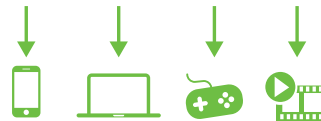
MU-MIMO Technology



Like having multiple routers in your home, Multi-User MIMO (MU-MIMO) sends data to multiple devices simultaneously to increase speed and efficiency. Your laptop, tablet, media player and game console can all receive data at the same time, with no need to wait in turn. You get more out of your home Wi-Fi network than ever before.



Traditional Wi-Fi

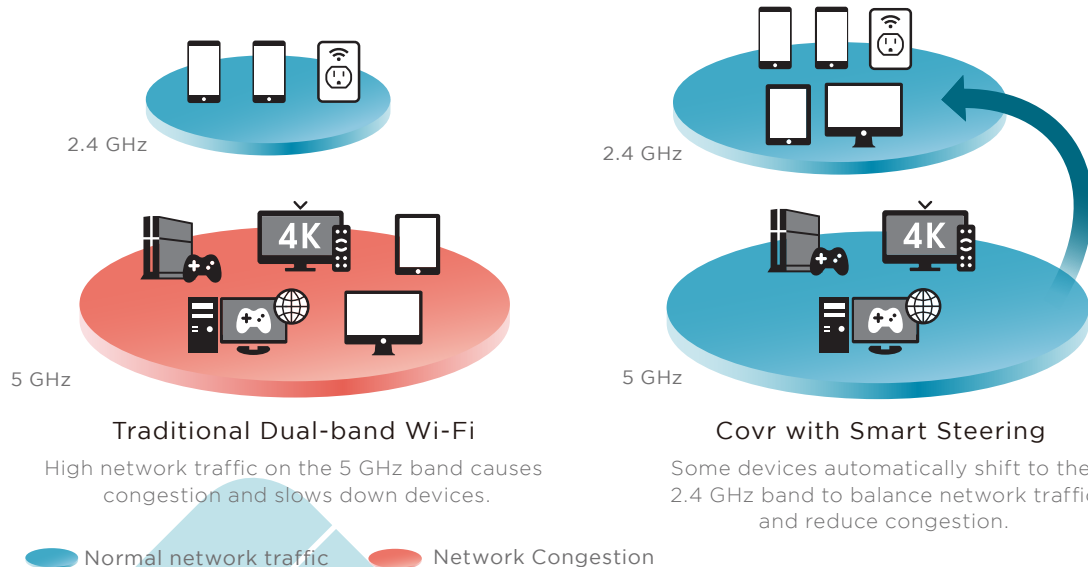


Covr with MU-MIMO

Smart Steering



If you don't know your 2.4's from your 5's, don't worry. Smart steering selects the best band for your device so that you get the best performance possible - all the time. With smart steering, Covr will automatically connect devices to the optimal Wi-Fi band and even move devices between Wi-Fi bands when the network experiences congestion. All this without dropouts, lag or any interruption to your wireless connection; and most importantly without you lifting a finger.

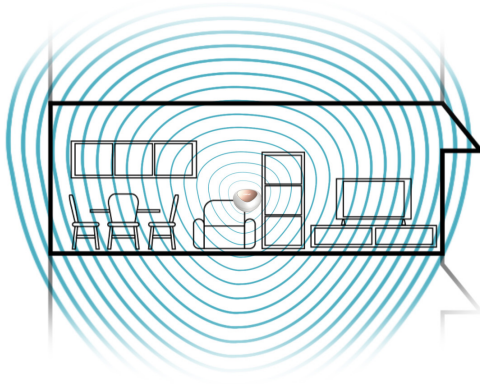




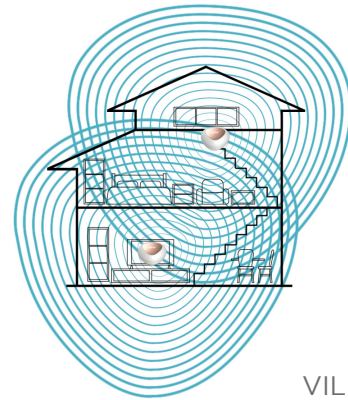
Simple. Yet Flexible.



Covr Dual Band Whole Home Wi-Fi System comes pre-paired and works straight out of the box, so you just need to plug in the Covr Points and get started. The best part? It's flexible enough to cover most housing types. From 1-storey apartments to 4-storey houses, and basements to back decks, Covr's got you covered.



LOFT

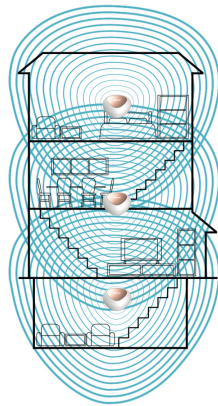


VILLA

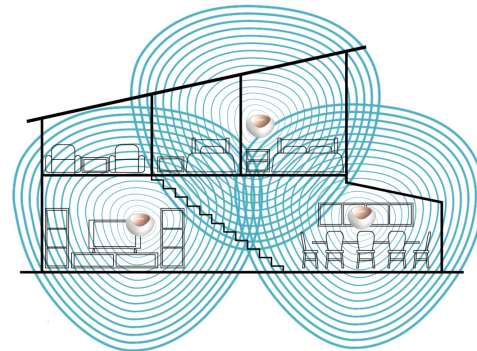
LOFT

2000 sq.ft

3000 sq.ft



TOWNHOUSE



CONTEMPORARY

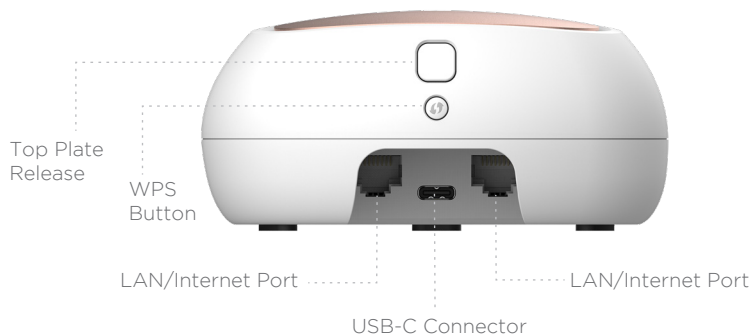
4000 sq.ft

5000 sq.ft

CONTEMPORARY



Get to Know Your Covr Points



How to change the colored plates



Press the button on the back of the Covr Point to release the plate



Lift the plate up and away from the Covr Point



Place the new colored plate on the top of the Covr Point, aligning the guide pins on the plate with the holes in the Covr Point

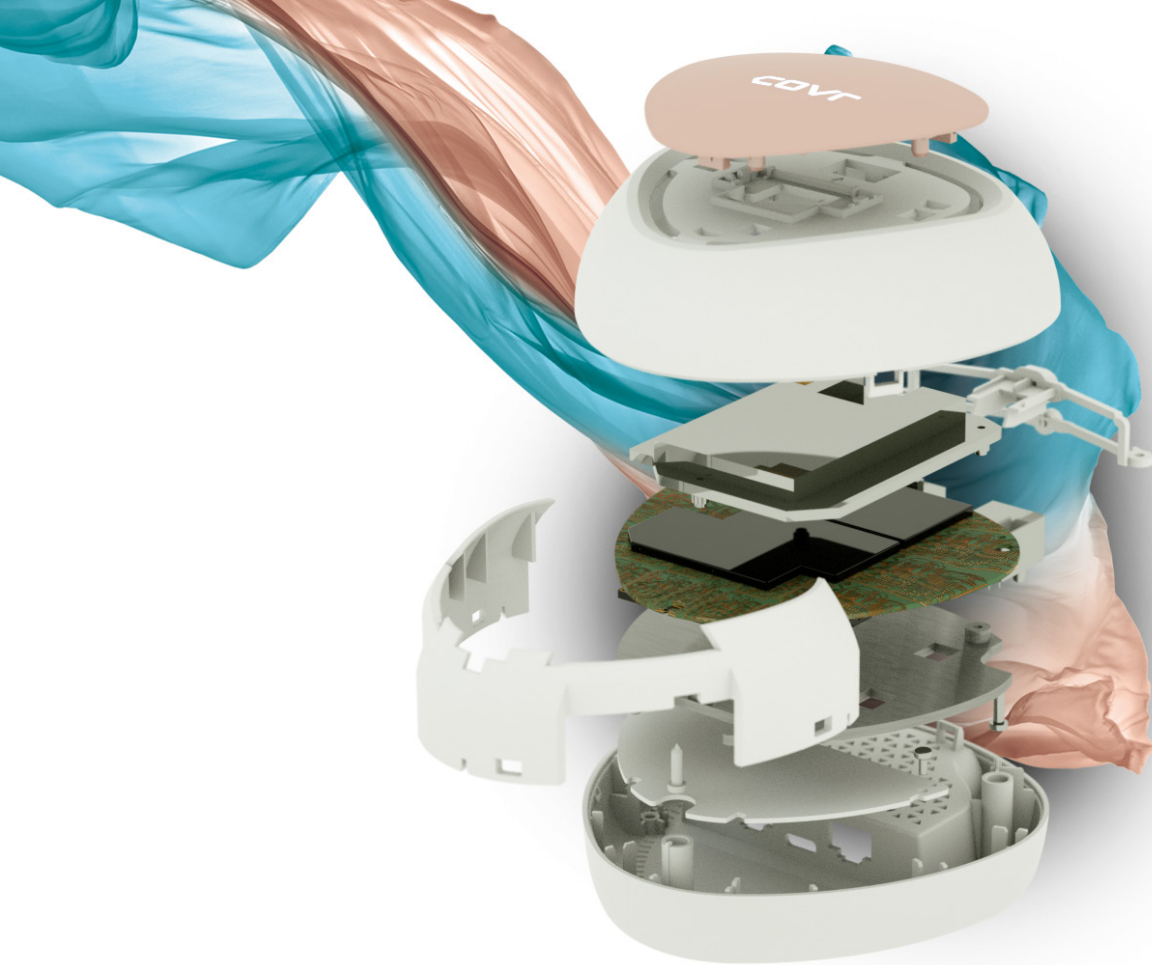


Slide the plate in the direction of the release button until you hear it click into place

Color Your Life

The World's First Mesh System
with **Swappable Colors**







Simple Setup



There are two easy ways to configure your Covr Dual Band Whole Home Wi-Fi System – Use the free D-Link Wi-Fi app for iOS and Android devices, or use the intuitive web-based setup wizard on your computer. Please see the following pages for further details on how to set up your Covr Dual Band Whole Home Wi-Fi System using these two methods.

Before You Start

Check the contents of your Covr Dual Band Whole Home Wi-Fi System with the list on the right.



3 x COVR-C1200
Covr Points



3 x USB-C
Power Adapter



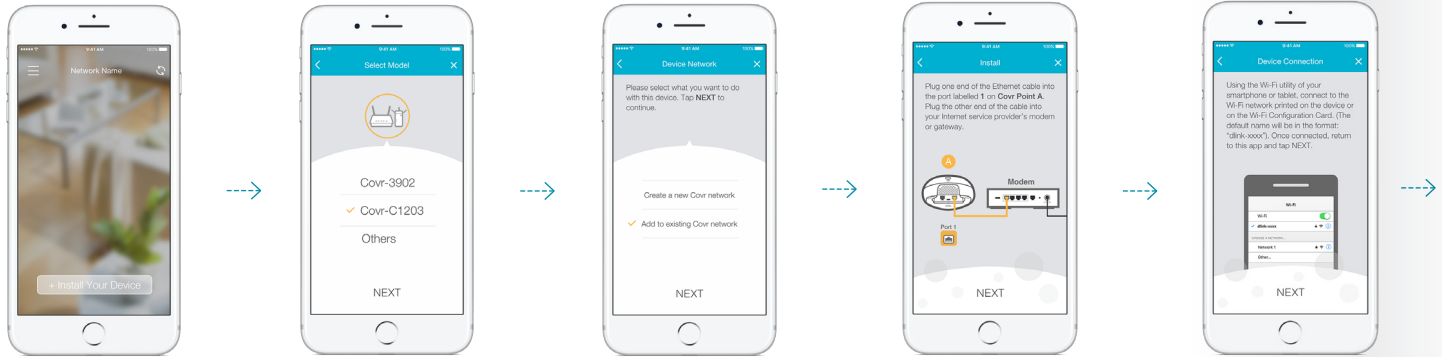
Ethernet
cable



Wi-Fi configuration
card



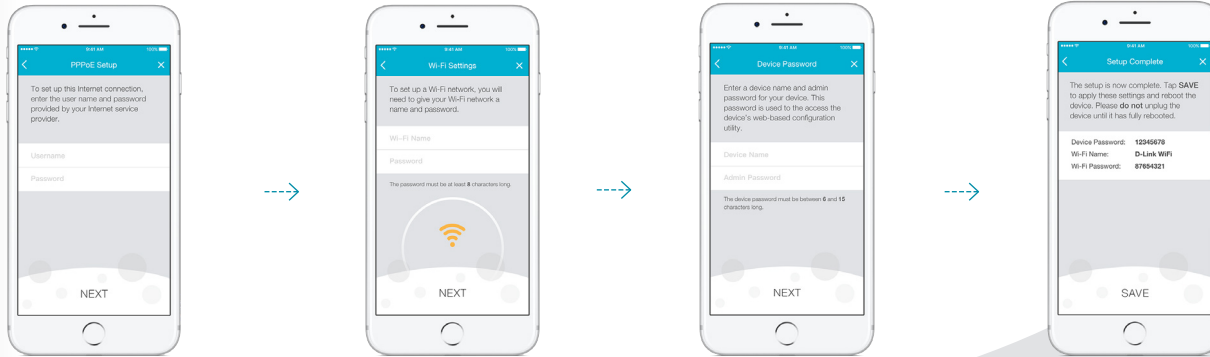
Set Up Using the D-Link Wi-Fi App



1. Open the app and tap **Install Your Device**.
2. Select **COVR-C1203** from the model menu and tap **NEXT**.
3. As this is the first time you are setting up a Covr network, select **Create New Covr Network** from the menu and tap **NEXT**.
4. Follow the instructions to plug in the first Covr Point and connect your existing router. Be sure to begin with the Covr Point marked "A". Tap **NEXT**.
5. On your mobile device, go to **Settings** and use the Wi-Fi utility to connect to the Wi-Fi name (SSID) printed on the back of the device, or on the included Wi-Fi Configuration Card. Once connected, return to the D-Link Wi-Fi app and tap **NEXT**.

Download the free D-Link Wi-Fi app from the App Store or Google Play.

 D-Link Wi-Fi



6

D-Link Wi-Fi will attempt to detect your internet connection type. If your internet uses a PPPoE connection, enter the details given by your service provider. Tap **NEXT** to continue.

7

Set a Wi-Fi network name (SSID) and password. You should try to choose a strong password which is difficult for others to guess. Tap **NEXT** to continue.

8

Set a device (admin) password for your Covr network. This password is used to access your Covr network's settings through the D-Link Wi-Fi app or web-based interface. This password should be different from the Wi-Fi password specified in the previous step. Tap **NEXT** to continue.

9

Setup is now complete. A summary of your Covr network settings will be shown on the screen. Tap **Save** to confirm these settings. The Covr Point will reboot, do not power off the Covr Point until it has fully rebooted.



Placing the Covr Points

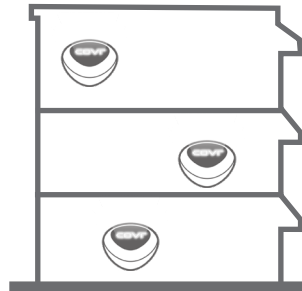
After you have completed the setup process, place the remaining Covr Points around your home. Follow these simple steps to find the optimal location for your Covr Points. It is recommended that you keep all Covr Points close to one another when first powering them up in order to ensure trouble-free pairing.



1. Plug in the remaining Covr Points and wait for the LED on the top of the devices to blink amber. This indicates that the devices are automatically pairing.



2. Wait for the LED's to turn solid white. This indicates that pairing has been completed and your Whole Home Wi-Fi System is set up.



3. Unplug the Covr Points and move them to the areas of your home where you want to extend Wi-Fi coverage. Plug them in and wait for them to boot up. When the LED on top of the device turns solid white, this indicates a strong connection to your whole home network.



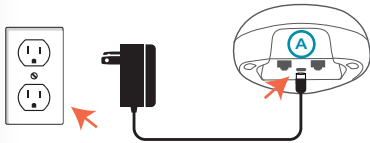
4. A flashing white LED indicates a weak connection. Move the Covr Point closer to the other Covr Points to improve signal strength.





Set Up Using Web Browser

Covr's intuitive setup wizard will guide you through the setup process and have your whole-home network up and running in no time.



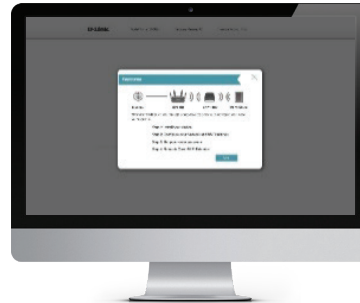
1. Connect the power adapter and plug in the Covr Point labeled A.



2. When the Covr LED is blinking amber, connect your PC or laptop to the Wi-Fi name (SSID) printed on the back of the device, or on the included Wi-Fi Configuration Card.



3. Type <http://covr.local/> into a web browser and follow the instructions to complete the setup.



4. The wizard will guide you through the setup process. Click or tap **NEXT** to get started and follow the simple instructions.



Network Management

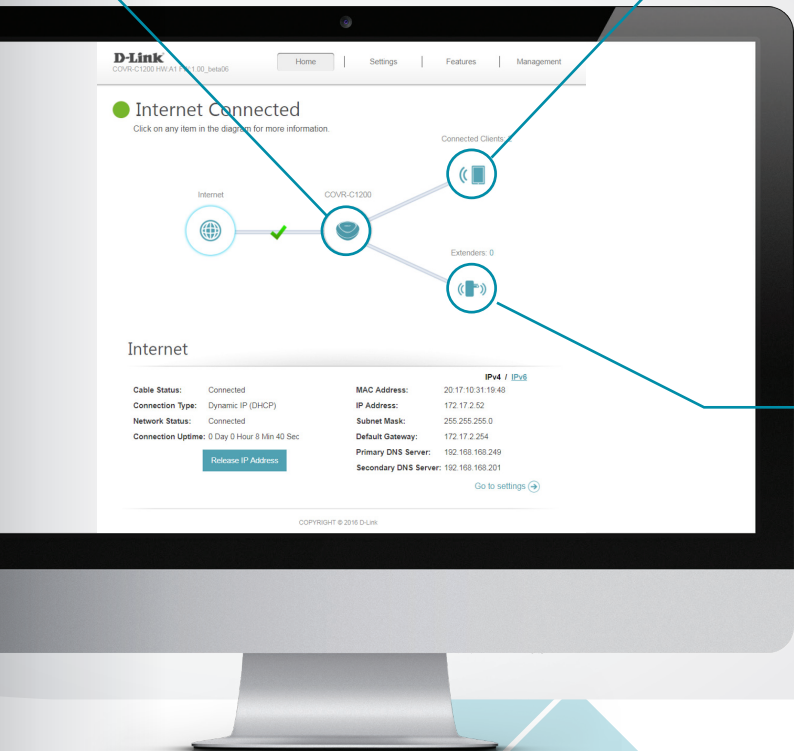
The Covr Dual Band Whole Home Wi-Fi System provides you with a home network solution that is quick and easy to set up. The Covr Points work straight out of the box - just plug them in to get started. Configure your network in no time using the intuitive web-based interface or with the free D-Link Wi-Fi app for your Android or iOS mobile device. Adding new wireless devices to your Covr network is a snap thanks to the Wi-Fi Protected Setup (WPS) button, which establishes an instant connection to new devices without the need to enter settings or create passwords. Expand your network with the touch of a button.



Network Status

Click on the Covr Point icon to get a snapshot of your network, including device IP address, IPv6 address, Wi-Fi network status, Wi-Fi Name, and Password.





Connected Clients

Check the status of individual devices connected to your Covr network by clicking on this icon. The name and IP address of each device will be displayed in the panel at the bottom of the screen. Click on the edit icon in the top right-hand corner of each device tile to manage that specific device.



Extenders

You can check the status of each Covr Point by clicking this icon. Click on the edit icon for each Covr Point to change its display name. Clients connected to Covr Points will also be displayed here

Parental Control and Scheduling

The Parental Control feature can be used to restrict network access to client devices. Schedules can also be set to give client devices access to the whole home network at certain times.

1.

First, set up a schedule which can be applied to client devices. From the menu at the top of the home screen click **Management** and then **Time & Schedule**. From the Time & Schedule page, click on the **Schedule** hyperlink to access the scheduling function.

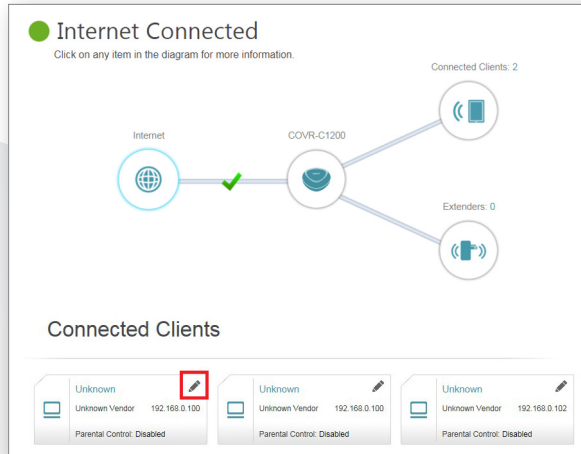
Name:

	0	1	2	3	4	5	6	7	8	9	10	11	12	13	14	15	16	17	18	19	20	21	22	23
Mon								7:00 - 14:00																
Tue								7:00 - 14:00																
Wed															13:00 - 19:00									
Thu								7:00 - 19:00																
Fri											10:00 - 23:00													
Sat															14:00 - 19:00									
Sun															14:00 - 19:00									



2.

Click on **Add Device** to create a new schedule. Enter a name for the new schedule in the **Name** field. Click on a square in the grid to include that time and day combination in the schedule. Click and drag to select a time range. When the desired schedule has been selected, click **Apply** to return to the schedule page. Click the **Save** hyperlink to save the schedule configuration.



4.

In the Edit Rule screen, click the Parental Control slider to enable scheduling, and then select the desired schedule from the drop-down menu. Click **Save** to save the schedule settings for that device.

3.

Return to the home screen and click on the **Connected Clients** icon in the network map. Select the client device which you wish to apply the schedule to by clicking on the pencil icon in the top right-hand corner of the device tile at the bottom of the screen.

Edit Rule ✕

Name:

Vendor: CIMSYS

MAC Address: 00:11:22:33:44:56

IP Address: 192.168.0.102

Parental Control: Enabled

Schedule: ▲

- Always OFF
- Schedule 1



COVR-C1203



Specifications

COVR-C1200

Ethernet Ports	2 x Gigabit (Auto WAN/LAN)
Antennas	2 x 3 (Tx/Rx) Internal
Wi-Fi Radios	Up to 866 Mbps (5 GHz) / Up to 300 Mbps (2.4 GHz)
Wi-Fi Standard	802.11ac/n/g/b
Dimensions	107.5 x 108 x 51 mm
WPS	Yes
Coverage Area	Up to 465 sqm / 5000 sq. ft. (3-pack)

Features

- Powered by Qualcomm® Mesh Networking Platform
- 802.11ac Wave 2 dual-band wireless
- Combined speeds of up to AC1200
- MU-MIMO
- Two Gigabit ports per device with auto WAN/LAN
- USB Type-C powered



High Performance



More Coverage



One Seamless Network



Covr your
Whole Home in
Seamless Wi-Fi

