

InkyAntics Rubber Stamps Crafty Cutts Framed Oval Pop-Up Die

Basic Framed Oval Pop-Up Card Assembly: Two Versions

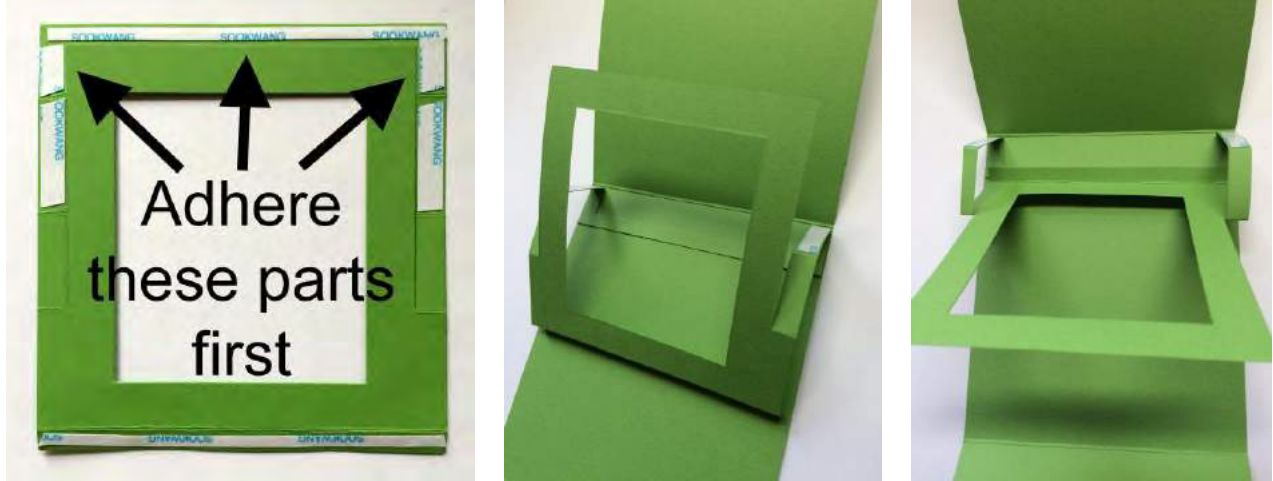
1. To make the standard Framed Oval Pop-Card card, score 4 1/4" x 11" cardstock at 1" and 6" on the long side. Pre-fold inward on both score lines to form card base.
2. Run die through die cutting machine with a piece of cardstock that measures 4 1/2" x 5 1/2" or larger. Remove pieces, and set aside oval piece and narrow strip.
3. On the largest piece, pre-fold side "arms" and bottom tab inward to create the frame.



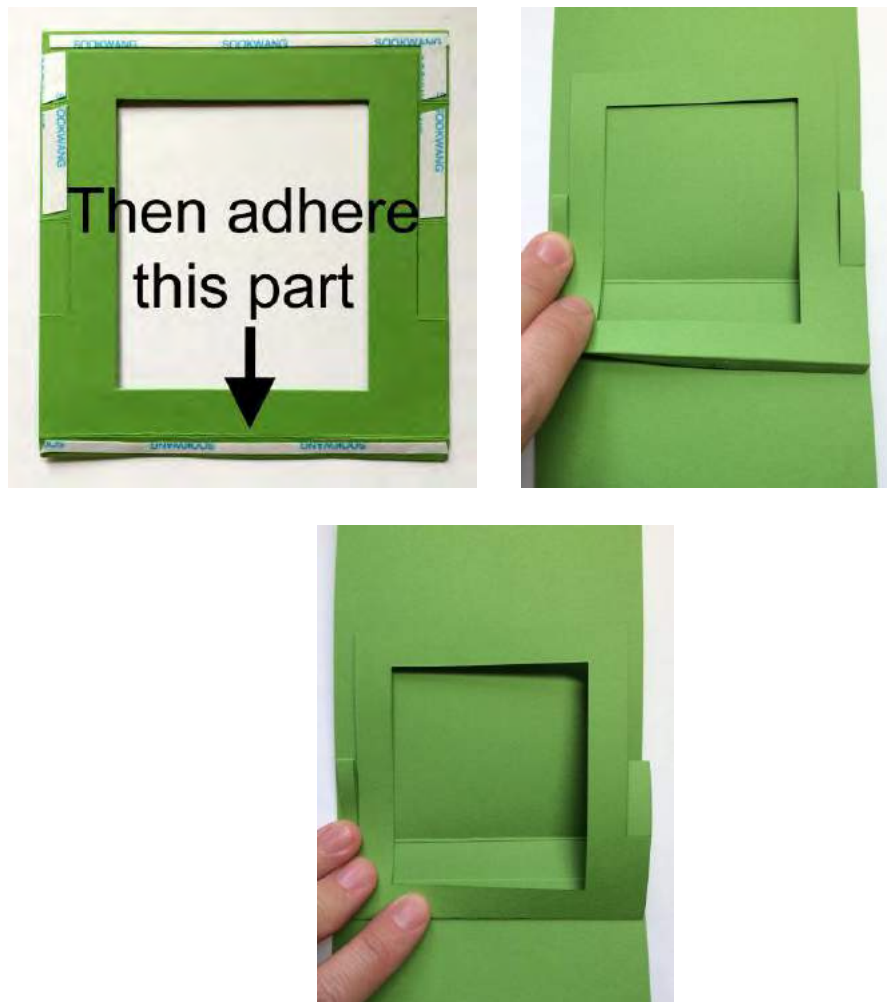
4. Flatten piece, turn it over, and then place Scor-Tape on upper and middle side "arms," top of frame, and bottom tab, as shown in photo. Do not remove tape liners yet.



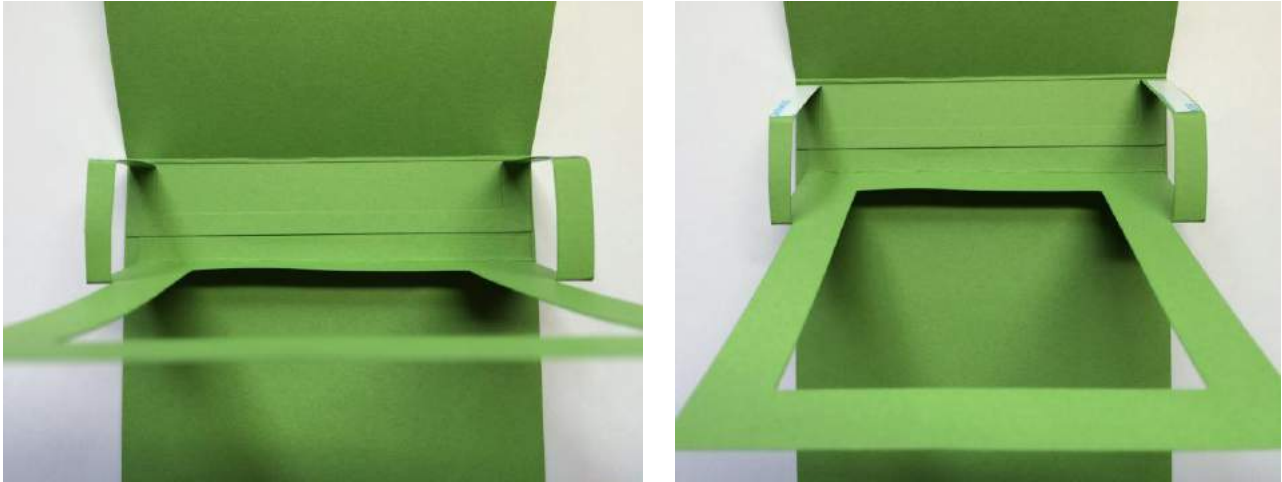
5. Remove tape liner from the top of frame and both upper side "arms" only, and place just below the score line on the card inside.



6. Remove tape liner from the bottom tab of the frame, and adhere to lower part of card inside, keeping frame body squared up. *Tip:* One way to do this is by laying the frame body flat against the card back, and then tucking under the bottom tab to adhere it.



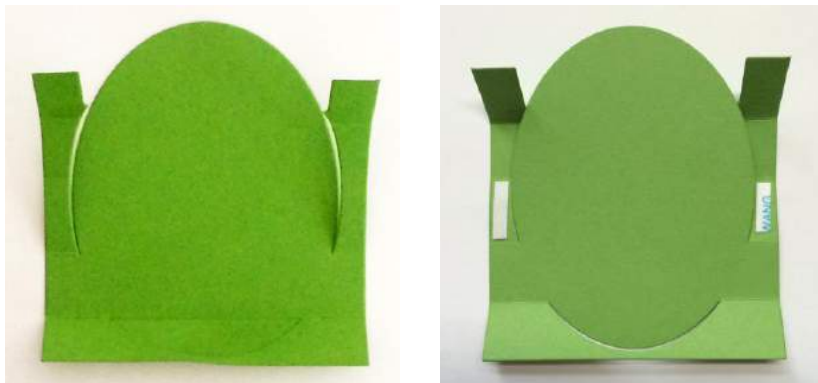
When you are done with this step, it will look like this (both photos show different angles of the same step):



7. Remove remaining tape liners from both sides of frame, and then fold back of card downward to adhere. This will ensure the frame is squared up inside the card.



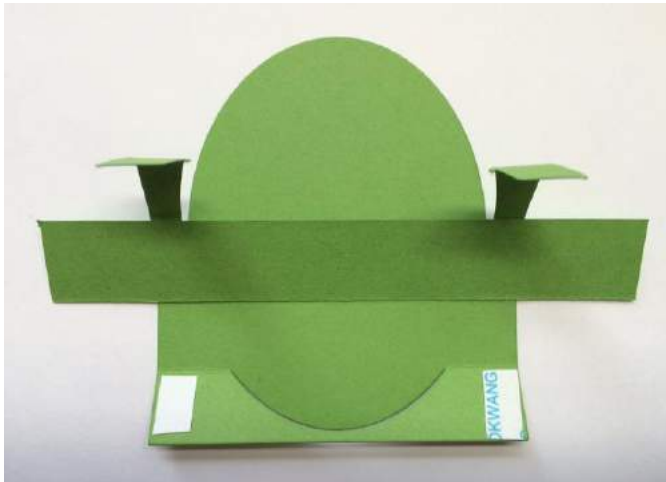
8. For the oval piece, there are two different ways to use it – as an **INSIDE LAYER** pop-up or as a **FRONT LAYER** pop-up. Steps #9-14 show how to make it as an **INSIDE LAYER** pop-up, and steps #15-20 show how to create the **FRONT LAYER** pop-up version.
9. To make an **INSIDE LAYER** pop-up: For the piece containing the oval, remove the top section and discard. Fold side “arms” and bottom tab inward, except for the oval part (which will remain straight). Place small pieces of Scor-Tape on bottom sections of both side “arms” (i.e., the third section downward).



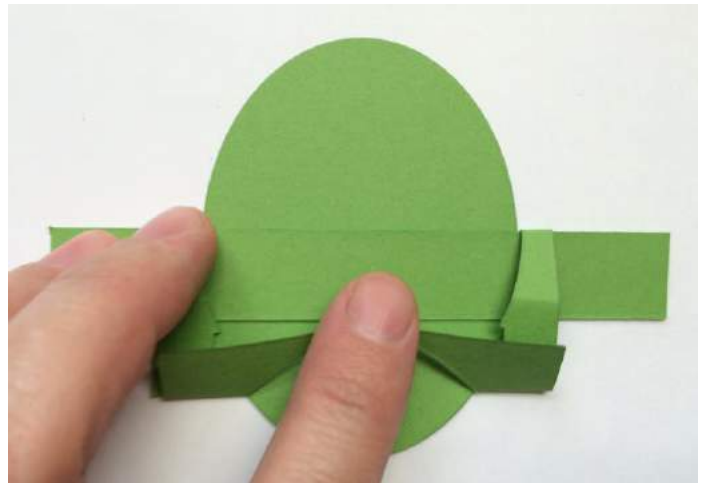
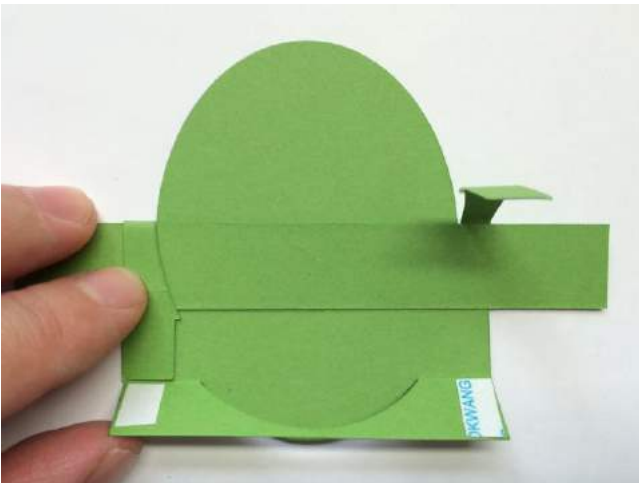
10. Remove tape liners, and center narrow strip (from step #2) across oval piece, and place on top of Scor-Tape.



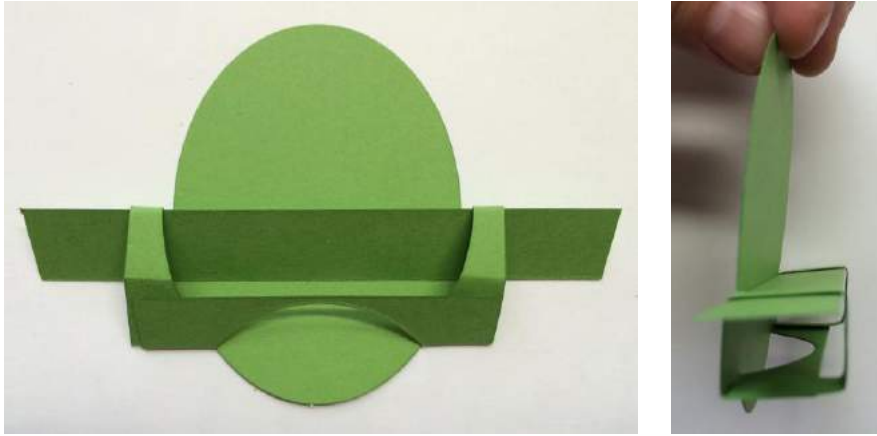
11. Place small pieces of Scor-Tape on both sides of bottom tab near the edges.



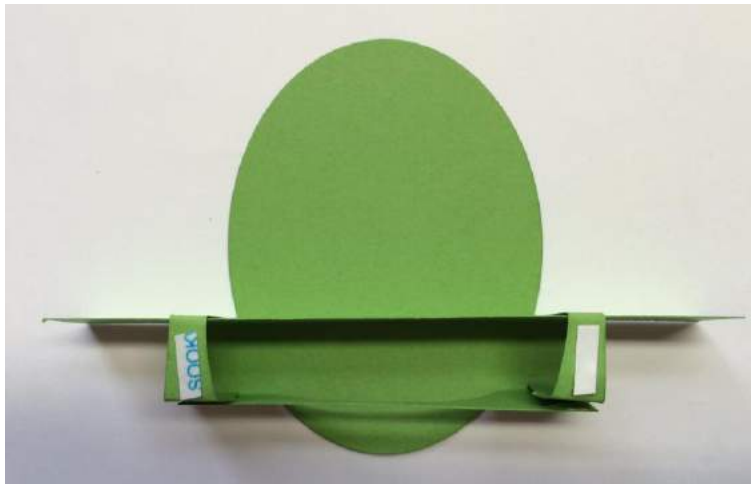
12. Remove tape liners, push down side "arms" so they're flat, and fold bottom tab upward to adhere. This will ensure the "arms" are squared up.



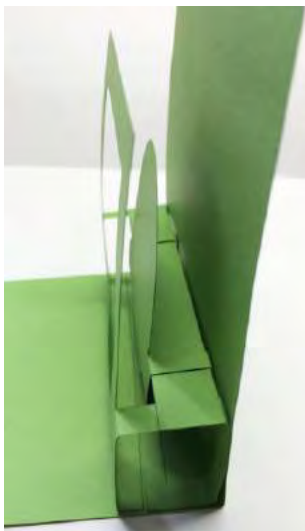
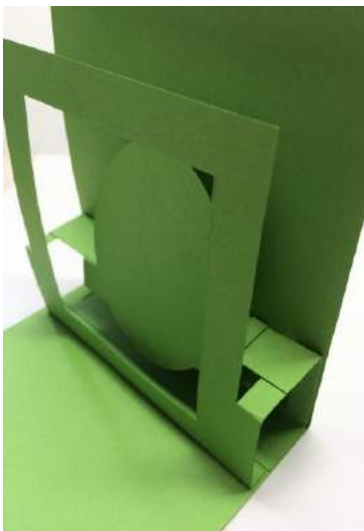
When you are done with this step, it will look like this (both photos show different angles of the same step):



13. Place Scor-Tape onto remaining sections of side "arms" that are still visible, as well as *underneath* both sides of narrow strip along the edges.



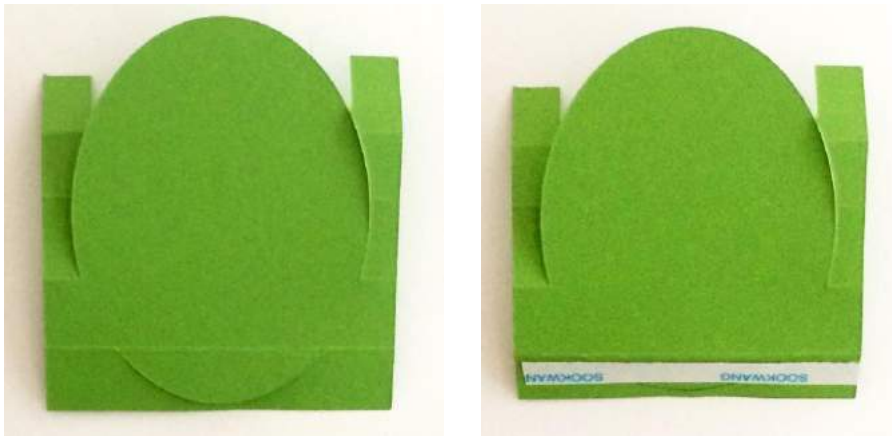
14. Remove all tape liners, and center the oval piece in between the frame "arms," flush against the back of the card base. Press down to adhere Scor-Tape pieces. Decorate card as desired, adhering stamped and colored pieces to the oval as well as the rest of the card.



15. To make a FRONT LAYER pop-up: For the piece containing the oval, remove the top section and discard. Fold side "arms" and bottom tab inward, including the oval part. Use a bone folder to crease the bottom of the oval so it folds more easily.



16. Turn over oval piece, and place Scor-Tape along bottom tab, but do not remove tape liner yet. (You will cover the bottom of the oval, which is fine.)



17. Place small pieces of Scor-Tape on the top and middle sections of both side "arms," but do not remove tape liner yet.



18. Remove tape liner from *only* the top sections of both side “arms,” and fold arms down toward bottom tab. Adhere to bottom tab as shown, and set aside oval piece.



19. Stamp desired image for oval piece onto scrap white cardstock. Color with pencils and blend with Gamsol. Cut out image and attach to oval piece. Trim oval piece from behind, so the green cardstock doesn't show on the front above the image.



20. Remove tape liners from the oval piece. Place bottom of oval piece onto card base, with the side “arms” pushed back against the frame, keeping everything squared up inside the card so that it folds flat neatly.

Note: The photo below shows the frame made with clear acetate instead of cardstock (as shown in steps #2-7 above), and the card has already been decorated with other stamped elements.



My Thoughts

Stamps & Die:

CSCS-2748 Whimsical Floral
Backgrounds Cling Set
SC-2753 Orb Sentiments
Clear Set
IAD-011 Framed Oval Pop-
Up Die

Cardstock:

White
5-5127 Lime Crush
5-5128 Apple Crush
9-960 Kraft

Other Supplies:

Black Dye Ink Pad
Colored Pencils
Gamsol Odorless Mineral
Spirits & Blending Stumps

Scor-Tape
Clear Acetate
1 1/2" Circle Punch
Hook & Loop Fastener Tabs



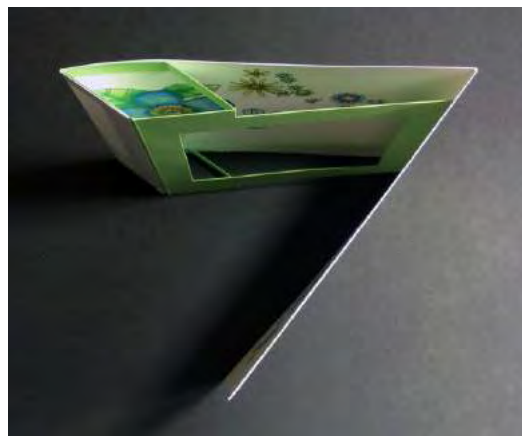
1. Follow steps #1-4 of Basic Framed Oval Pop-Up Card Assembly instructions, using white cardstock for the card base, Apple Crush cardstock for the frame, and clear acetate for the oval piece and narrow strip.
2. Stamp images from Whimsical Floral Backgrounds Cling Set onto inside of card base, as shown in photo on next page. Color images with pencils and blend with Gamsol.



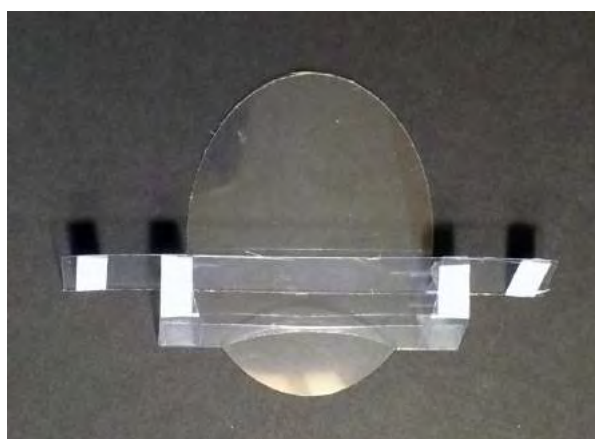
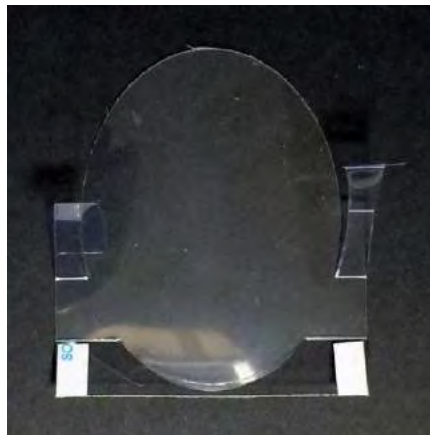
3. For steps #5-7 of Basic Framed Oval Pop-Up Card Assembly instructions, instead of adhering frame to inside center of card base, attach it to the 1" flap as shown in photo below.



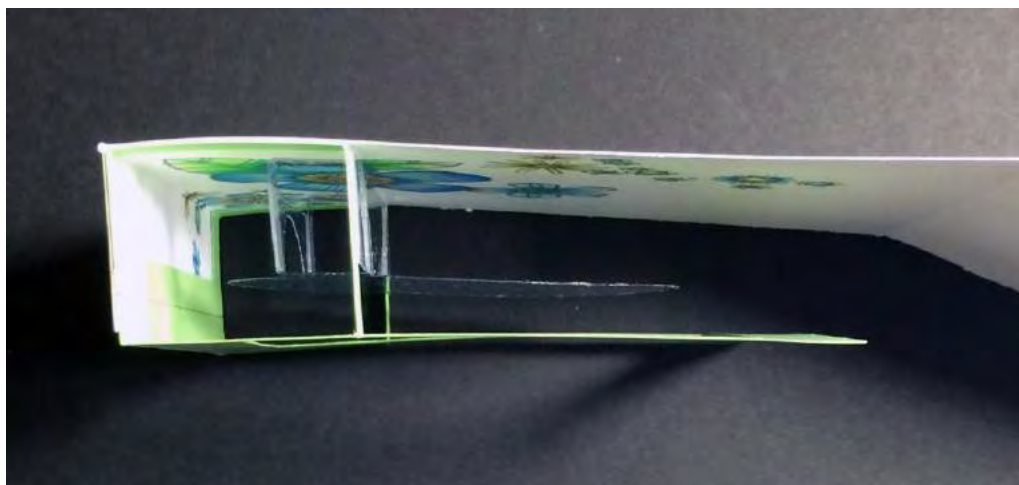
When you are done with these steps, it will look like this when the card is folded up:



4. For the clear acetate oval piece, follow steps #9-14 of Basic Framed Oval Pop-Up Card Assembly instructions to make it as an INSIDE LAYER pop-up.



Once the oval piece has been inserted into the card base, it will look like this:





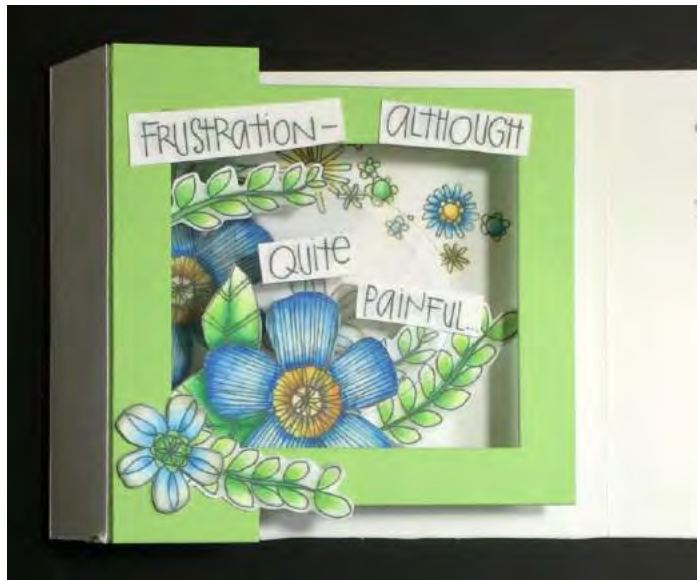
5. Stamp images and saying from Whimsical Floral Backgrounds Cling Set onto scrap white cardstock, as shown in photo. Color images with pencils and blend with Gamsol. Cut out images, trimming closely around edges. Cut the saying freeform-style into several pieces.



6. Using Scor-Tape, adhere image pieces onto frame and oval piece, as shown in photo.



7. Place saying pieces onto frame, oval piece, and card base using Scor-Tape, as shown.





8. Score 1" x 5" Apple Crush cardstock at 1 1/4", and adhere short end to back of card base on left side. This will be the closure strip.
9. Stamp "My Thoughts" saying from Orb Sentiments Clear Set onto scrap white cardstock, punch into 1 1/2" circle, and attach to long end of Apple Crush strip.
10. Close card, and adhere 4" x 4 1/2" Lime Crush cardstock to large right flap of card base on the outside.
11. Stamp images from Whimsical Floral Backgrounds Cling Set onto 1 3/4" x 4 1/4" white cardstock, as shown in sample.
12. Color images with pencils and blend with Gamsol. Layer panel onto lower part of right flap.
13. Adhere 1 3/4" x 1 3/4" Kraft cardstock to right side of right flap, as shown in sample.
14. Place hook and loop fasteners onto Apple Crush closure strip and Kraft square, as shown in photo, so the card can stay neatly closed.



Thank You

Stamps & Die:

CSCS-2747 Whimsical
Flowers Cling Set
SC-2753 Orb Sentiments
Clear Set
IAD-011 Framed Oval Pop-
Up Die

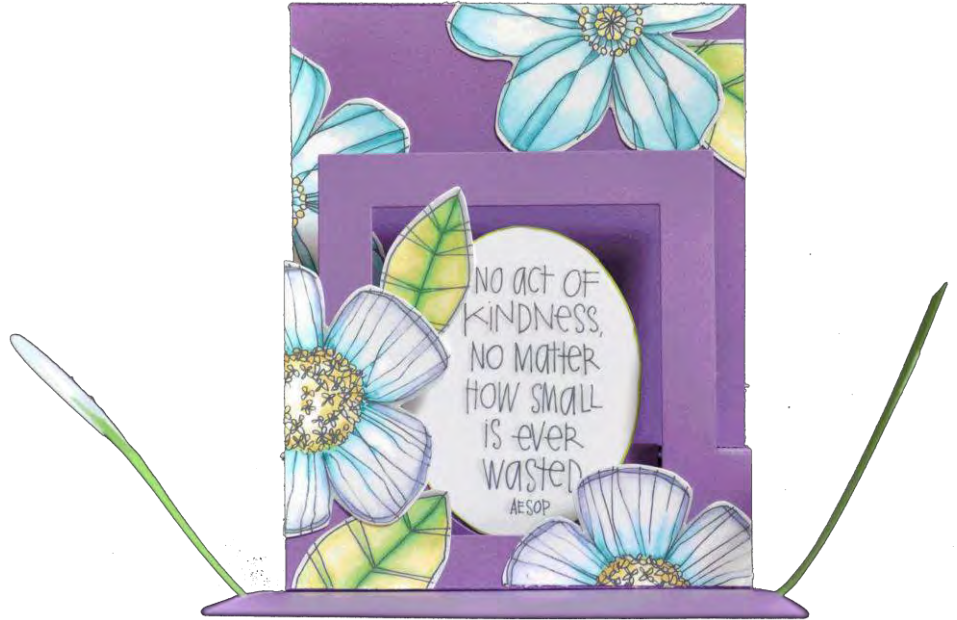
Cardstock:

White
5-5127 Lime Crush
5-5128 Apple Crush
6-685 Grape Delight

Other Supplies:

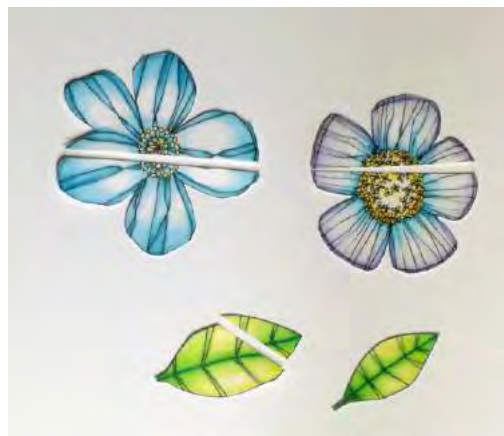
Black Dye Ink Pad
Colored Pencils
Gamsol Odorless Mineral
Spirits & Blending Stumps

Scor-Tape
1 1/2" Circle Punch
Hook & Loop Fastener Tabs
Foam Tape (Optional)



1. Score 4 1/4" x 11" Grape Delight cardstock at 5 1/2" on the long side, and fold in half to make card base.
2. Follow steps #2-7 of Basic Framed Oval Pop-Up Card Assembly instructions, using Grape Delight cardstock for the frame, oval piece, and narrow strip.
3. Stamp each image from Whimsical Flowers Cling Set twice onto scrap white cardstock. Color images with pencils and blend with Gamsol, and then cut each image except for smaller leaf into two pieces, as shown in photo.

Note: The photo below shows one set of images, but you will want to make *two* complete sets for this card. One set will be used to decorate the outside of the card base (front), and the other will be used for the inside.



4. Adhere images to outside of card base (front), as shown in photo. (*Optional: If desired, do not put adhesive onto the ends of the leaves, but instead pop them up with small pieces of foam tape after the next step has been completed.*)



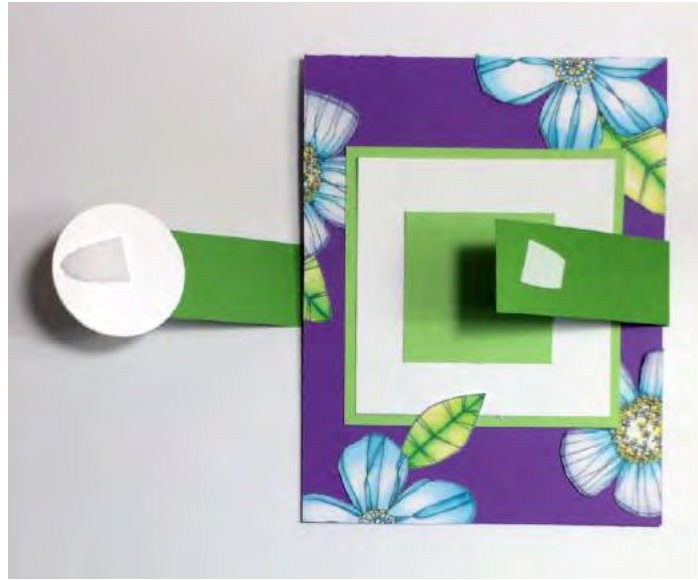
5. Layer 1 3/4" x 1 3/4" Apple Crush cardstock onto 2 1/2" x 3 1/4" white cardstock, and then again onto 2 3/4" x 3 1/2" Apple Crush cardstock. Adhere layered panel to center of card front.



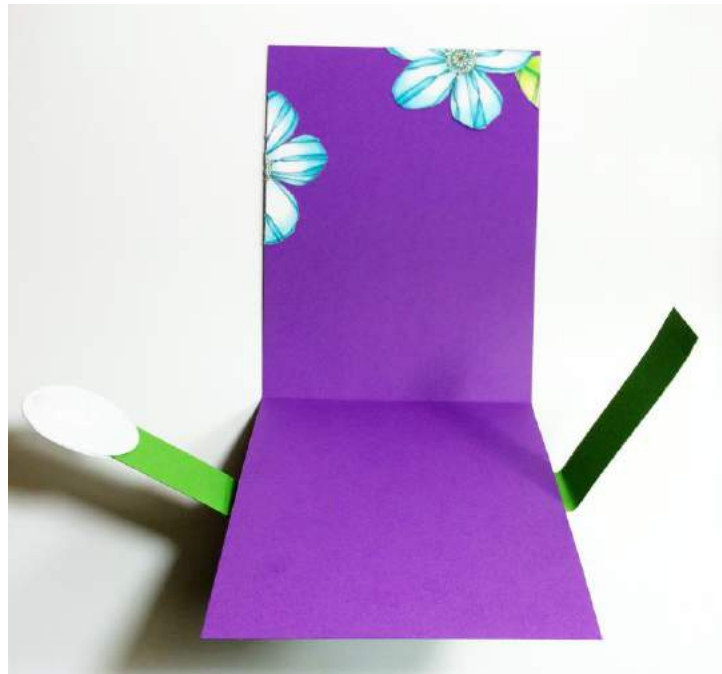
6. Score 3/4" x 9 1/2" Lime Crush cardstock at 2 1/4" and 6 1/2" on the long side to make a closure strip, and place a piece of Scor-Tape in the center section.



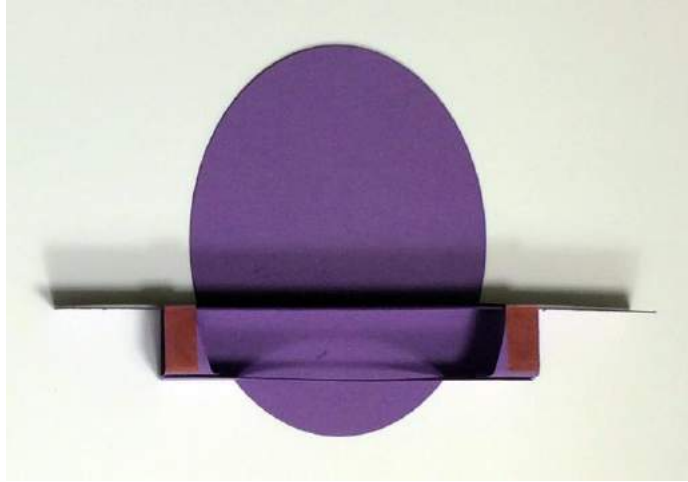
7. Place the section with Scor-Tape on back of card base, so that ends of closure strip can wrap around to front of the card.
8. Stamp "Thank You" saying from Orb Sentiments Clear Set onto scrap white cardstock, punch into 1 1/2" circle, and attach to left end of Lime Crush strip.
9. Place half-pieces of hook and loop fasteners onto back of saying and right end of closure strip, as shown in photo, so the card can stay neatly closed.



10. Open the card, and adhere flower and leaf pieces to inside of card base, as shown in photo.



11. For the oval piece, follow steps #9-14 of Basic Framed Oval Pop-Up Card Assembly instructions to make it as an INSIDE LAYER pop-up.



12. Die cut another oval piece from scrap cardstock to use as a template. Trace template onto white cardstock, and cut out oval by hand, making it just slightly larger than die-cut oval piece.
13. Stamp "No Act of Kindness" saying from Whimsical Flowers Cling Set onto white oval piece. If desired, color the saying and edges of oval with pencils and blend with Gamsol.
14. Adhere oval saying piece over Grape Delight oval piece, and attach remaining flower and leaf pieces onto frame, oval piece, and card base, as shown in photo. (Note: The photo below shows the white oval plain, but yours will already be stamped with the saying at this point. Also, the closure strip is folded inside the card in this photo, but when the card is closed, the strip should be wrapped around the outside.)



Happy Birthday

Stamps:

CSCS-2747 Whimsical
Flowers Cling Set
SC-2753 Orb Sentiments
Clear Set

Cardstock:

White
5-5127 Lime Crush
6-685 Grape Delight

Other Supplies:

Black Dye Ink Pad
Colored Pencils
Gamsol Odorless Mineral
Spirits & Blending Stumps
Craft Knife
Foam Tape



1. Fold 5 1/2" x 8 1/2" Grape Delight cardstock in half to form card base.
2. Stamp images from Whimsical Floral Backgrounds Cling Set as shown in sample onto 4 1/4" x 5 1/2" white cardstock, masking as needed.
3. Color images with pencils and blend with Gamsol.
4. Using craft knife, cut around outer edges of flower petals and leaves on center left of panel (but do not cut around them completely – you want them to stay attached to the panel).
5. Layer panel onto card base, placing adhesive only around outer edges.
6. Lift edges of flower petals and leaves, curving them slightly upward with your fingers, and place small pieces of foam tape underneath.

7. Stamp "Happy Birthday" saying onto 1 1/2" x 1 1/2" white cardstock, and layer onto 1 3/4" x 1 3/4" Lime Green cardstock.
8. Adhere layered image piece onto upper right of card front.
9. Attach 1/2" x 5 1/2" Grape Delight cardstock onto lower part of card front, as shown in sample.

Get Well Soon

Stamps:

CSCS-2748 Whimsical Floral
Backgrounds Cling Set
SC-2753 Orb Sentiments
Clear Set

Cardstock:

White
5-5127 Lime Crush
5-5128 Apple Crush

Other Supplies:

Black Dye Ink Pad
Colored Pencils
Gamsol Odorless Mineral
Spirits & Blending Stumps
Foam Tape



1. Fold 5 1/2" x 8 1/2" Lime Crush cardstock in half to form card base.
2. Stamp images from Whimsical Floral Backgrounds Cling Set as shown in sample onto 4 1/4" x 5 1/2" white cardstock.
3. Color images with pencils and blend with Gamsol, and layer panel onto card base.
4. Stamp "Get Well Soon" saying onto 1 1/2" x 1 1/2" white cardstock, and layer onto 1 3/4" x 1 3/4" Lime Green cardstock.
5. Adhere layered image piece onto card front, slightly off center as shown in sample.
6. Stamp images from Whimsical Floral Backgrounds Cling Set as shown in sample onto 3/4" x 3/4" white cardstock.
7. Color images with pencils and blend with Gamsol, and layer onto 1" x 1" Apple Crush cardstock.
8. Using foam tape, adhere layered image piece to upper left of card front as shown in sample.

Get Well Daisies

Stamps & Die:

AGC3-2761 Daisies Cling Stamp
SC-2753 Orb Sentiments Clear Set
IAD-011 Framed Oval Pop-Up Die

Cardstock:

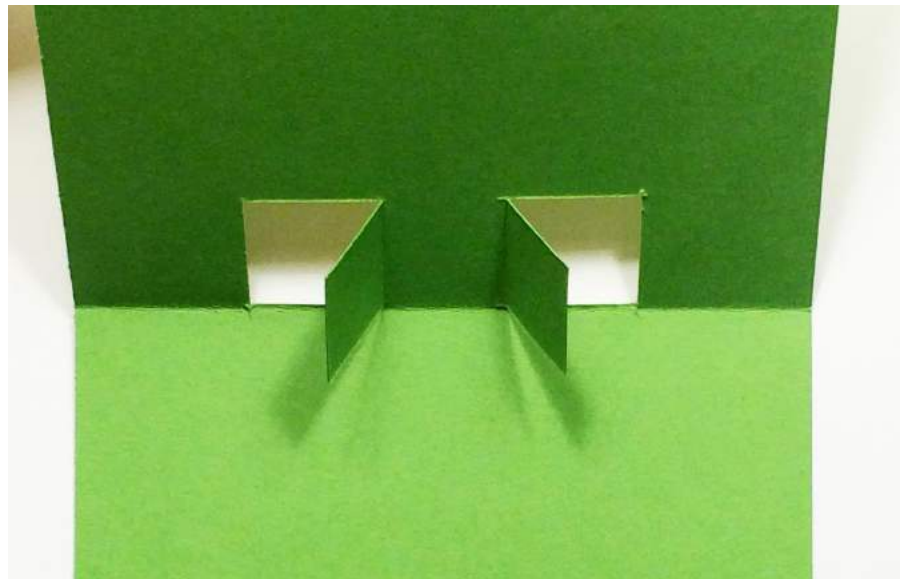
White
5-5127 Lime Crush
5-5128 Apple Crush
9-960 Kraft

Other Supplies:

Black Dye Ink Pad
Colored Pencils
Gamsol Odorless Mineral Spirits & Blending Stumps
Craft Knife
Scor-Tape
Clear Acetate
White Ribbon



1. Score $4\frac{1}{4}$ " x 11" Lime Crush cardstock at $5\frac{1}{2}$ " on the long side, and fold in half to make card base.
2. To make a kickstand for the card base, use a craft knife to cut $\frac{3}{4}$ " vertical slits upward starting along the fold line at $\frac{7}{8}$ " and $3\frac{3}{8}$ ". Then score $\frac{3}{4}$ " vertical lines upward at $1\frac{1}{8}$ " and $2\frac{5}{8}$ ". Finally, cut four horizontal slits total (two on each side) to form two $\frac{3}{4}$ " square "door" shapes. Each door will be hinged on the opposite side, closest to the center of the card, as shown in the photos.



3. Follow steps #2-7 of Basic Framed Oval Pop-Up Card Assembly instructions, using clear acetate for the frame and Apple Crush cardstock for the oval piece. (The narrow strip is not needed for this card.)



4. For the oval piece, follow steps #15-18 of Basic Framed Oval Pop-Up Card Assembly instructions to create the FRONT LAYER pop-up version.
5. Stamp the Daisies Cling Stamp twice onto scrap white cardstock. Color images with pencils and blend with Gamsol. Cut out both images, closely trimming around edges.
6. Cut off the upper daisy and upper two leaves from the first image, keeping it as a single intact piece, and set aside.



7. Adhere lower part of remaining daisy/leaves piece to front of clear acetate frame on the card inside.



8. Follow steps #19-20 of Basic Framed Oval Pop-Up Card Assembly instructions to attach the oval piece to the card base and clear acetate frame. Use the lower two daisies and lower two leaves from the second image, leaving these images as one intact piece, to decorate the oval piece.



9. Cut out the middle leaf from the second image, and decorate back of card inside with this leaf, as well as the daisy/leaves piece from step #6 on the previous page.



10. Stamp "Get Well Soon" saying from Orb Sentiments Clear Set onto scrap white cardstock, punch into 1 1/2" circle, and attach to upper right of clear acetate frame on the card inside.



11. Stamp Daisies Cling Stamp again, this time onto 3" x 4" Kraft cardstock. Color image with pencils and blend with Gamsol.

12. Layer image piece onto 3 1/4" x 4 1/4" Apple Crush cardstock. Fold card bottom upward, and adhere layered panel onto card base, making sure it's in the same direction as shown in photo.



13. Wrap 10" piece of white ribbon around lower part of card, knotting ends. (Ribbon band will need to be removed before card is opened by the recipient.)