

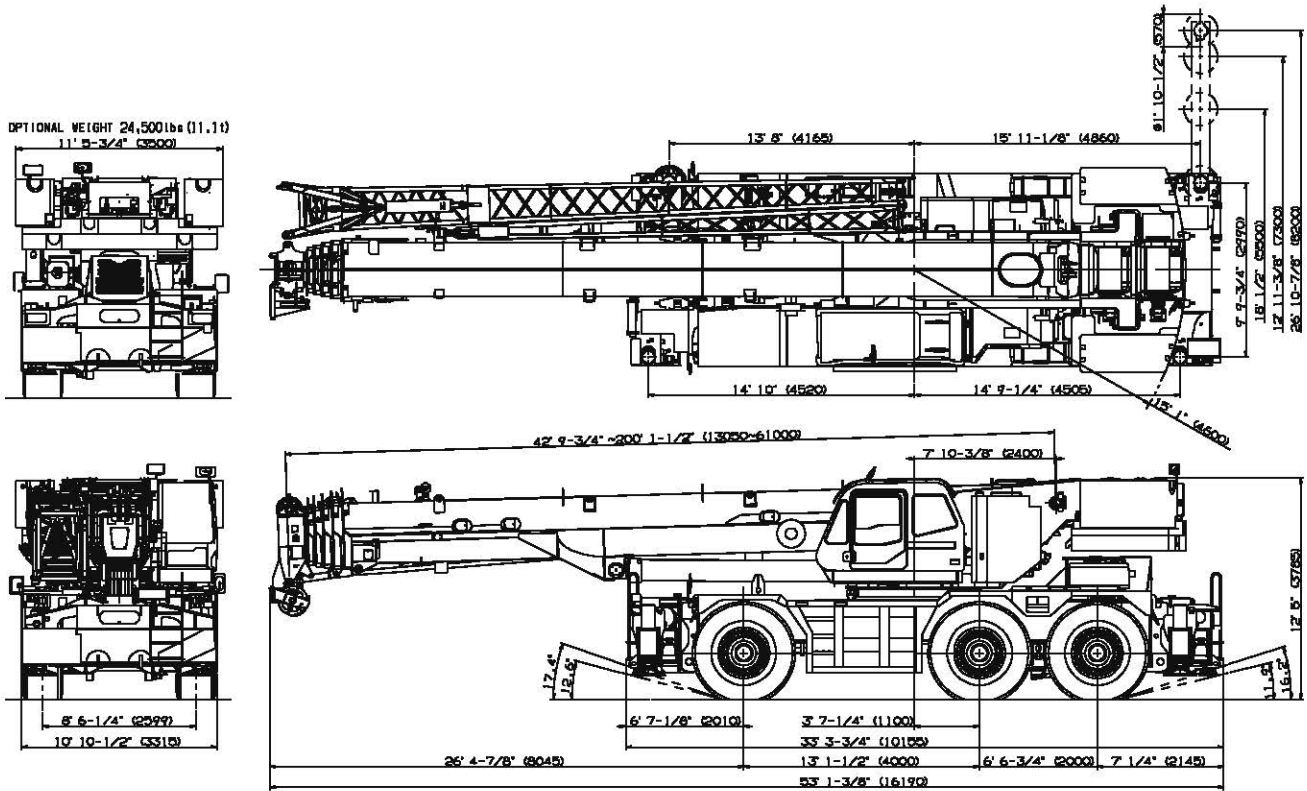


GR-1600XL-2

160 Ton Capacity (145 Metric Tons)

HYDRAULIC ROUGH TERRAIN CRANE

DIMENSIONS



Note : Dimension is with boom angle at -1.5 degree.

GENERAL DIMENSIONS (26.5 R25 Tires)

	Feet	Meters
Turning radius		
6 wheel steer	32' 6"	9.9
2 wheel steer	48' 11"	14.9
Tail swing of counterweight	15' 1"	4.6

Specifications are subject to change without notice.

CRANE SPECIFICATIONS

BOOM

Six section boom, single cylinder telescoping with pinning system, 42.8'~200.1' (13.1m~61.0m), of round box construction with seven sheaves, 15-3/4" (0.400m) root diameter, at boom head. Two easily removable wire rope guards, rope dead end provided on both sides of boom head. Boom telescope sections are supported by wear pads both vertically and horizontally. Extension speed 157.3' in 430 seconds.

BOOM ELEVATION - By a double acting hydraulic cylinder with holding valve. Elevation -1.5°~ 81.5°, combination controls for hand or foot operation. Boom angle indicator. Automatic speed reduction and soft stop function. Boom raising speed 20° to 60° in 28 seconds.

JIB - Two stage bi-fold lattice type with 0°, 20° or 40° offset (tilt type). Single sheave, 17-5/16" (0.440m) root diameter, at the head of both jib sections. Stored alongside base boom section. Jib length is 33.8' (10.3m) or 59.1' (18.0m). Assistant cylinders for mounting and stowing, controlled at right side of superstructure. Self stowing jib mounting pins.

AUXILIARY LIFTING SHEAVE (SINGLE TOP)

Single sheave, 17-5/16" (0.440m) root diameter. Mounted to main boom head for single line work (stowable).

ANTI-TWO BLOCK - Pendant type over-winding cut out device with audio-visual (FAILURE lamp/BUZZER) warning system.

SWING

Hydraulic axial piston motor through planetary swing speed reducer. Continuous 360° full circle swing on ball bearing turn table at 1.3min⁻¹ {rpm}. Equipped with manually locked/released swing brake. A 360° positive swing lock manually engaged in cab. Twin swing system: Free swing or lock swing controlled by selector switch on front console.

HOIST

MAIN HOIST - Variable speed type with grooved drum driven by hydraulic axial piston motor through speed reducer. Power load lowering and raising. Equipped with automatic brake (neutral brake) and counterbalance valve. Controlled independently of auxiliary hoist. Equipped with cable follower and drum rotation indicator.

DRUM - Grooved 15" (0.382m) root diameter x 29-1/4" (0.742m) wide. Wire rope: 1050' of 3/4" diameter rope (320m of 19mm). Drum capacity: 1293' (394m) 7 layers. Maximum single line pull: 1st layer 21,800 lbs (9,900kg). Maximum permissible line pull (wire strength): 15,900 lbs (7,200kg).

AUXILIARY HOIST - Variable speed type with grooved drum driven by hydraulic axial piston motor through speed reducer. Power load lowering and raising. Equipped with automatic brake (neutral brake) and counterbalance valve. Controlled independently of main hoist. Equipped with cable follower and drum rotation indicator.

DRUM - Grooved 15" (0.382m) root diameter x 29-1/4" (0.742m) wide. Wire rope: 738' of 3/4" diameter rope (225m of 19mm). Drum capacity: 1293' (394m) 7 layers. Maximum single line pull: 1st layer 21,800 lbs (9,900kg). Maximum permissible line pull (wire strength): 15,900 lbs (7,200kg).

WIRE ROPE - Non-rotating 3/4" (19mm) 7x35 class. Breaking Strength 79,400 lbs (36,000 kg)

HOOK BLOCKS

110 ton (100 metric ton) - 7 sheaves with swivel hook block
7.9 ton (7.2 metric ton) - Weighted hook ball with swivel and safety latch.

COUNTERWEIGHT

Self-removable counterweight (40,100 + 24,500 = 64,600 lbs)

HYDRAULIC SYSTEM

PUMPS - Two variable piston pumps for crane functions. Tandem gear pump for steering, swing and optional equipment. Powered by carrier engine. Pump disconnect for crane is engaged/ disengaged by rotary switch from operator's cab.

CONTROL VALVES - Multiple valves actuated by pilot pressure with integral pressure relief valves.

RESERVOIR - 202 gallon (763 lit.) capacity. External sight level gauge.

FILTRATION - BETA10=10 return filter, full flow with bypass protection, located inside of hydraulic reservoir. Accessible for easy replacement.

OIL COOLER - Air cooled fan type.

CAB AND CONTROLS

Both crane and drive operations can be performed from one cab mounted on rotating superstructure.

Left side, 1 man type, tilting cab, steel construction with sliding door access and safety glass windows opening at side. Door window is powered control. Windshield glass window and roof glass window are shatter-resistant. Tilt-telescoping steering wheel. Adjustable control lever stands for swing, boom elevating, boom telescoping, auxiliary hoist and main hoist. Control lever stands can change neutral positions and tilt for easy access to cab. 3 way adjustable operator's seat with high back, headrest and armrest. Engine throttle knob. Foot operated controls: boom elevating, boom telescoping, service brake and engine throttle. Hot water cab heater and air conditioning.

Dash-mounted engine start/stop, monitor lamps, cigarette lighter, drive selector switch, parking brake switch, steering mode select switch, power window switch, pump engaged/disengaged switch, swing brake switch, telescoping/auxiliary hoist select switch, outrigger controls, free swing / lock swing selector switch, eco mode switch, high speed hoist (main/aux) switch and ashtray.

Instruments - Torque converter oil temperature, engine water temperature, air pressure, fuel, speedometer, tachometer, hour meter and odometer / tripmeter. Hydraulic oil pressure is monitored and displayed on the AML-C display panel.

Tadano electronic LOAD MOMENT INDICATOR system (AML-C) including:

- Control lever lockout function
- Boom position indicator
- Outrigger state indicator
- Boom angle / boom length / jib offset angle / jib length / load radius / rated lifting capacities / actual loads read out
- Ratio of actual load moment to rated load moment indication
- Automatic Speed Reduction and Slow Stop function on boom elevation and swing
- Working condition register switch
- Load radius / boom angle / tip height / swing range preset function
- External warning lamp
- Tare function
- Fuel consumption monitor

- Main hoist / auxiliary hoist select
- Drum rotation indicator (audible and visible type) main and auxiliary hoist

TADANO AML-C monitors outrigger extended length and automatically programs the corresponding "RATED LIFTING CAPACITIES" table

Operator's right hand console includes transmission gear selector and sight level bubble. Upper console includes working light switch, roof washer and wiper switch emergency outrigger set up key switch, jib equipped/removed select switch, eco mode switch, high speed hoist (main / aux) switch, boom emergency telescoping switch (2nd and 3rd-4th-top) and air conditioning control switch. Swing lock lever.

NOTE: Each crane motion speed is based on unladen conditions.

CARRIER SPECIFICATIONS

TYPE - Rear engine, left hand steering, driving axle 2-way selected type by manual switch, 6x2 1st axle drive, 6x4 1st and 3rd axle drive.

FRAME - High tensile steel, all welded mono-box construction.

TRANSMISSION - Electronically controlled full automatic transmission. Torque converter driving full powershift with driving axle selector. 5 forward and 2 reverse speeds, constant mesh.

- 2 speeds - high range - 2 wheel drive; 4 wheel drive
- 3 speeds - low range - 4 wheel drive

TRAVEL SPEED - 9.3 mph (15 km/h) *with counterweight
2.4 mph (4 km/h) *without counterweight

AXLE

- 1st axle - Full floating type, steering and driving axle with planetary reduction.
- 2nd axle -Steering axle
- 3rd axle - Full floating type, steering and driving axle with planetary reduction.

STEERING- Hydraulic power steering controlled by steering wheel. Four steering modes available: 2 wheel front, 4 wheel rear, 6 wheel coordinated and 6 wheel crab. Emergency steering device.

ENGINE

Model	Mitsubishi 6M60
Type	Direct injection diesel
No. of cylinders	6
Combustion	4 cycle, turbo charged and after cooled
BoreXStroke, in.(mm)	4.646 x 4.528 (118 x 115)
Displacement, cu. in (liters)	460 (7.54)
Air inlet heater	24 volt preheat
Air cleaner	Dry type, replaceable element
Oil filter	Full flow with replaceable element
Fuel filter	Full flow with replaceable element
Fuel tank, gal.(liters)	79.2 (300), right side of carrier
Cooling	Liquid pressurized, recirculating by-pass

SUSPENSION

1st axle - Rigid mounted to frame.
2nd and 3rd axles - "Hydro-Pneumatic suspension cylinders" with leveling adjustment and oscillation.

BRAKE SYSTEMS - Service: Air over hydraulic disc brakes on all 6 wheels. Parking/Emergency: Spring applied-air released brake acting on input shaft of 1st and 3rd axles. Auxiliary: Electro-pneumatic operated exhaust brake.

TIRES - 26.5 R25

OUTRIGGERS - Four hydraulic, beam and jack outriggers. Vertical jack cylinders equipped with integral holding valve. Each outrigger beam and jack is controlled independently from cab. Beams extend to 26'10-7/8" (8.2 m) center-line and retract to within 10' 10-1/2" (3.315 m) overall width with floats. Outrigger jack floats are attached thus eliminating the need of manually attaching and detaching them. Controls and sight bubble located in superstructure cab. Four outrigger extension lengths are provided with corresponding "RATED LIFTING CAPACITIES" for crane duty in confined areas.

Self-removable outrigger boxes for ease of transportation.

Min. Extension	9' 9-3/4" (2.99m) center to center
Mid. Extension	18' 1/2" (5.50m) center to center
Mid. Extension	23' 11-3/8" (7.30m) center to center
Max. Extension	26' 10-7/8" (8.20m) center to center
Float size(Diameter)	1' 10-1/2" (0.57m)

Radiator	Fin and tube core, thermostat controlled
Fan, in.(mm)	Suction type, 6-blade, 23.6 (600) dia.
Starting	24 volt
Charging	24 volt system, negative ground
Battery	2-120 amp. Hour
Compressor, air, CFM(l /min)	29 CFM (830) at 2,600rpm
Horsepower (kW)	Gross 267 (200) at 2,600rpm
Torque, Max. ft-lb (Nm)	579 (785) at 1,400rpm
Capacity, gal.(liters)	
Cooling water	3.4 (13)
Lubrication	3.4 - 4.0 (13 - 15)
Fuel	79.2 (300)

STANDARD EQUIPMENT

- Six section boom, single cylinder telescoping with pinning system 42.8'~200.1' (13.05 m~61.0 m)
- 33.8' or 59.1' (10.3 m or 18.0 m) bi-fold lattice jib (tilt type) with 0°, 20° or 40° pinned offsets and self stowing pins.
- Quick reeving type bi-fold jib
- Auxiliary lifting sheave (single top) stowable
- Variable speed main hoist with grooved drum, cable follower and 1050' of 3/4" cable.
- Variable speed auxiliary hoist with grooved drum, cable follower and 738' of 3/4" cable.
- Drum rotation indicator (audible, visible and thumper type) main and auxiliary hoist
- Anti-Two block device (overwind cutout) and lower limit (3rd wrap)
- Boom angle indicator
- Tadano electronic load moment indicator system (AML-C)
- Outrigger extension length detector
- Tadano twin swing system and 360° positive swing lock
- Tilting cab
- Self centering finger control levers with pilot control
- Control pedals for boom elevating and boom telescoping
- 3 way adjustable cloth seat with armrests, high back and seat belt
- Tilt-telescoping steering wheel
- Tinted safety glass and sun visor
- Front windshield wiper and washer
- Roof window wiper and washer
- Power window (cab door)
- Rear view mirrors (right and left side)
- Mirror for main and auxiliary hoists
- Cigarette lighter and ashtray
- Cab floor mat
- Pump disconnect in operator's cab
- Hydraulic oil cooler
- Air conditioner (hot water heater and cooler)
- Positive control
- Work lights
- Independently controlled outriggers
- Four outrigger extension positions
- Mitsubishi 6M60 turbo charged after cooled engine (267HP) with exhaust brake
- Electronic controlled automatic transmission driven by torque converter
- 6 X 4 X 6 drive/steer
- Automatic 2nd and 3rd axle oscillation lock out system
- 26.5 R25 tires
- Disc brakes
- Fenders
- Air dryer
- Water separator with filter(high filtration)
- Engine over-run alarm
- Back-up alarm
- Low oil pressure/high water temp. warning device (visual)
- 2nd and 3rd steer centering light
- Air cleaner dust indicator
- Tool storage compartment
- Tire inflation kit
- 24 volt electric system
- 7.9 ton (7.2 metric ton) hook ball with swivel
- 110 ton (100 metric ton) - 7 sheaves with swivel hook block and safety latch for 3/4" wire rope
- Weighted hook storage compartment
- Hook block tie down (front bumper)
- Towing hooks-Front and rear
- Lifting eyes
- Halogen head lamp
- Telematics (machine data logging and monitoring system) with HELLO-NET via internet
- Fuel consumption monitor
- Eco mode system
- Self-removable counterweight (40,100 + 24,500 = 64,600 lbs)
- Self-removable outrigger boxes
- Emergency steering assist
- Anemometer
- Aircraft warning light

OPTIONAL EQUIPMENT

- 33.8' or 59.1' (10.3 m or 18.0 m) bi-fold lattice jib (tilt type) with 5° - 40° hydraulic offset.
- * Replaces standard fly jib if purchased as optional.
- 50 ton (45 metric ton) - 3 sheaves with swivel hook block and safety latch for 3/4" wire rope
- Boom removal assist system

HOISTING PERFORMANCE

LINE SPEEDS AND PULLS

Layer	Main or auxiliary hoist - 15" (0.382m) drum					
	Line speeds ¹				Line pulls - Available ²	
	Low		High		Low	
	F.P.M.	m/min	F.P.M.	m/min	Lbs.	kgf
1st	253	77	354	108	21,800	9,900
2nd	276	84	384	117	19,900	9,010
3rd	299	91	413	126	18,200	8,270
4th	318	97	446	136	16,800	7,640
5th	341	104	476	145	15,600	7,090
6th	361	110	505	154	14,600	6,620
7th ³	384	117	535	163	13,700	6,210

* Maximum permissible line pull may be affected by wire rope strength.
Wire rope strength (7x35 class) = 15,900lbs (7,200kg)

- Line speeds based only on hook block, not loaded.
- Developed by machinery with each layer of wire rope, but not based on rope strength or other limitation in machinery or equipment.
- Seventh layer of wire rope are not recommended for hoisting operations.

DRUM WIRE ROPE CAPACITIES

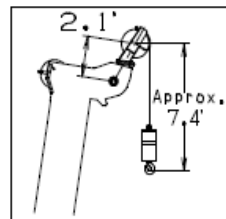
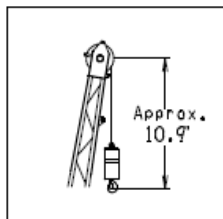
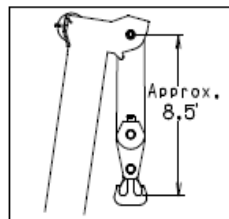
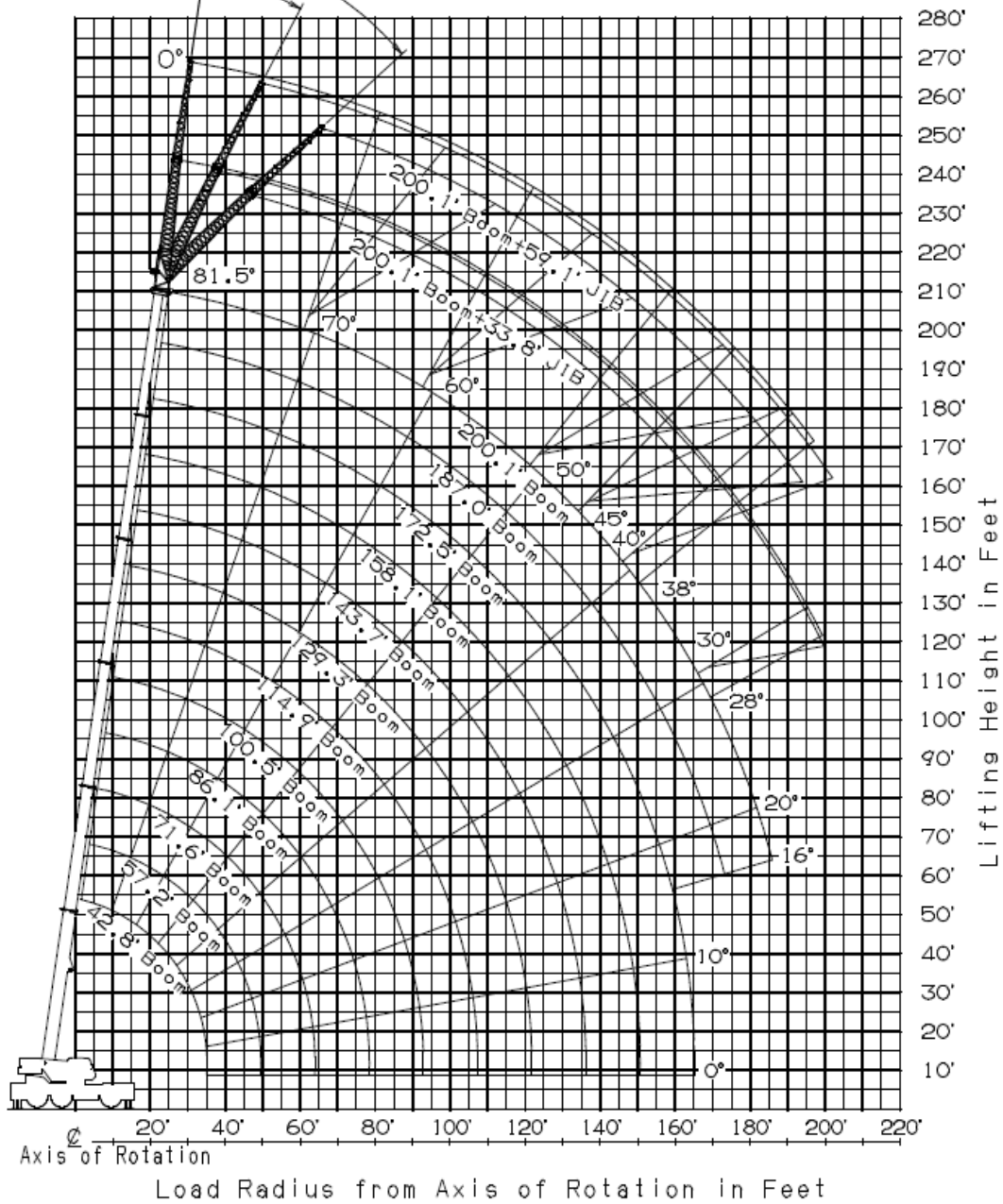
Wire rope layer	Main and auxiliary drum grooved lagging			
	3/4" (19mm) wire rope			
	Rope per layer		Total wire rope	
	Feet	Meters	Feet	Meters
1	147.0	44.8	147.0	44.8
2	159.4	48.6	306.4	93.4
3	172.2	52.5	478.7	145.9
4	184.7	56.3	663.4	202.2
5	197.2	60.1	860.6	262.3
6	209.6	63.9	1070.2	326.2
7	222.1	67.7	1292.3	393.9

DRUM DIMENSIONS

	Inch	mm
Root diameter	15	382
Length	29-1/4	742
Flange diameter	26-5/8	677

GR-1600XL WORKING RANGE CHART

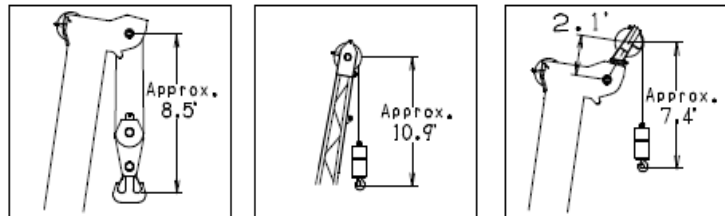
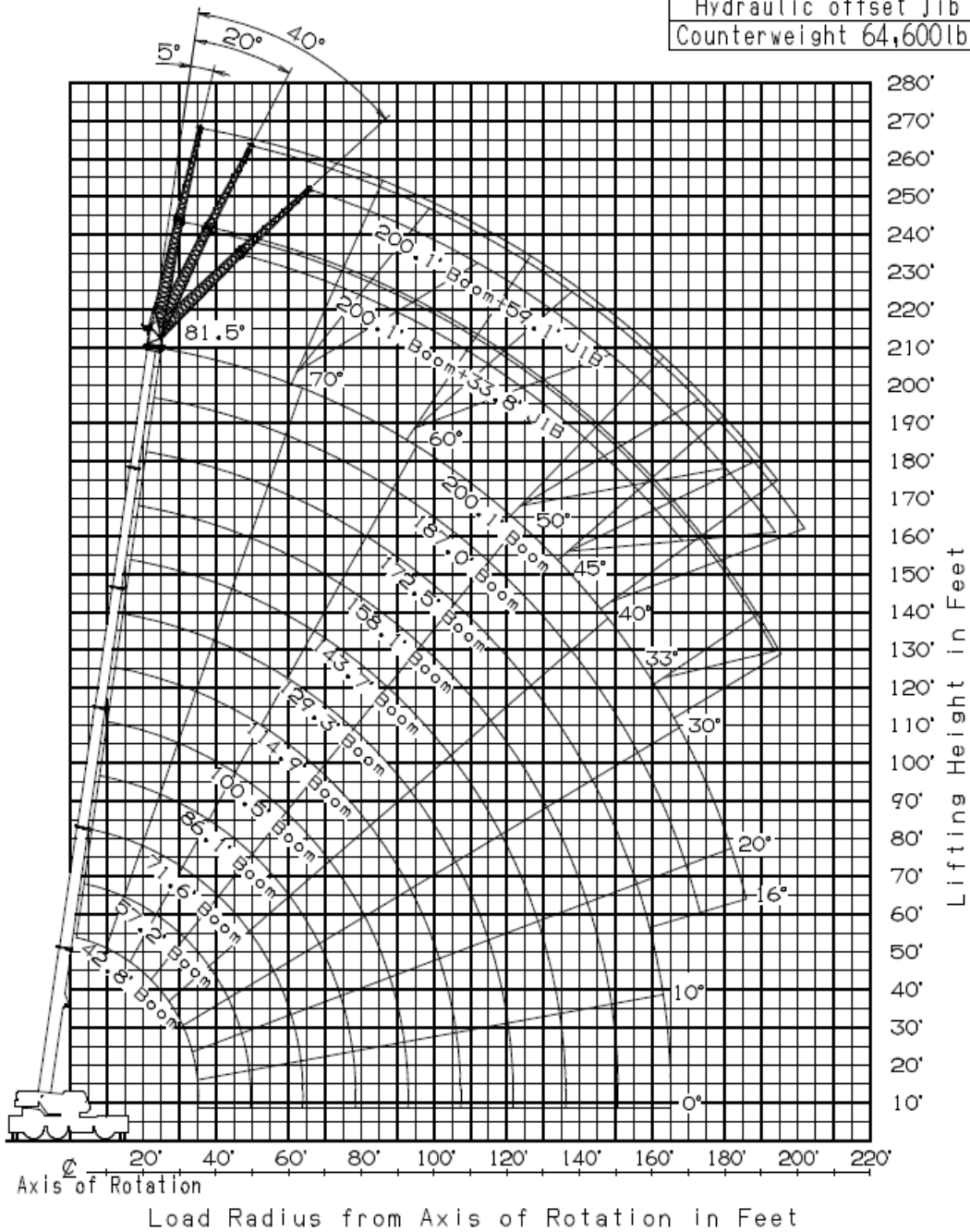
Manual offset jib
Counterweight 64,600lbs



NOTE: 1. Boom and Jib geometry shown are for unloaded condition and machine standing level on firm supporting surface. Boom deflection and subsequent radius and boom angle change must be accounted for when applying load to hook.

GR-1600XL WORKING RANGE CHART

Hydraulic offset jib
Counterweight 64,600 lbs



NOTE: 1. Boom and jib geometry shown are for unloaded condition and machine standing level on firm supporting surface. Boom deflection and subsequent radius and boom angle change must be accounted for when applying load to hook.

GR-1600XL RATED LIFTING CAPACITIES (IN POUNDS)

ON OUTRIGGERS FULLY EXTENDED 26' 10-7/8" (8.2m) SPREAD												
COUNTERWEIGHT 64,550 lbs (29,300 kg)												
360° ROTATION												
A \ B	42.8' (13.1m)	57.2' (17.4m)	71.6' (21.8m)	86.1' (26.2m)	100.5' (30.6m)	114.9' (35.0m)	129.3' (39.4m)	143.7' (43.8m)	158.1' (48.2m)	172.5' (52.6m)	187.0' (57.0m)	200.1' (61.0m)
8'	** 320,000	200,000	174,200									
10'	241,800	200,000	174,200									
12'	218,000	200,000	174,200	145,500								
15'	187,100	182,800	174,200	145,500	111,800							
20'	148,300	148,800	145,500	138,700	106,300	84,700						
25'	121,500	122,400	122,800	120,800	106,300	77,600	66,400					
30'	101,000	102,500	102,700	102,100	97,700	77,600	61,100	52,700				
35'	48,700	85,100	85,300	84,700	86,200	74,700	54,900	48,900	41,700	33,100		
45'		64,200	62,400	64,200	63,300	63,500	46,700	43,000	37,700	33,100	26,500	22,900
50'			54,700	56,200	55,600	57,100	43,900	39,200	35,500	32,000	26,500	22,900
60'			45,400	44,300	46,100	45,200	38,800	33,500	31,100	28,400	26,000	22,900
65'				41,000	41,400	40,300	36,600	31,100	28,900	26,900	24,700	22,700
75'				32,600	33,500	32,600	33,100	27,100	24,900	24,000	22,300	20,500
80'					30,200	29,500	30,400	25,400	23,600	22,500	21,200	19,600
90'					23,600	26,000	24,700	22,500	21,200	19,800	19,200	17,600
95'						23,800	22,500	21,400	20,100	18,700	18,100	16,500
105'						18,500	18,700	19,000	18,100	17,000	16,300	14,800
110'							17,200	17,900	16,800	16,300	15,700	14,100
120'							12,800	15,200	14,100	15,000	13,900	12,600
125'								14,100	13,400	13,700	12,800	11,900
130'								13,000	12,800	12,600	11,700	11,200
140'									11,500	10,800	9,700	9,700
145'									10,600	9,900	9,000	9,000
155'										8,400	7,500	7,500
160'										7,900	6,800	6,600
170'											5,500	5,500
175'											4,900	4,900
180'												4,400
185'												3,700

** Over front and with additional lifting equipment

A :Boom length in feet

B :Load radius in feet

GR-1600XL RATED LIFTING CAPACITIES (IN POUNDS)

0°, 20° or 40° pinned offsets

ON OUTRIGGERS FULLY EXTENDED 26' 10-7/8" (8.2m) SPREAD COUNTERWEIGHT 64,550 lbs (29,300 kg) 360° ROTATION													
C	200.1' (61.0m) Boom + 33.8' (10.3m)						C	187.0' (57.0m) Boom + 33.8' (10.3m)					
	0° offset		20° offset		40° offset			0° offset		20° offset		40° offset	
	R	W	R	W	R	W		R	W	R	W	R	W
81.5	43.3'	12,100	56.8'	12,100	66.6'	11,500	81.5	38.7'	13,700	51.5'	13,700	61.0'	12,800
81	45.6'	12,100	59.4'	12,100	68.9'	11,200	81	41.0'	13,700	54.1'	13,700	63.0'	12,800
80	52.2'	12,100	64.6'	11,900	73.5'	10,800	80	45.9'	13,700	59.1'	13,700	67.3'	12,300
79	56.4'	12,100	69.9'	11,700	77.8'	10,600	79	50.9'	13,700	63.0'	13,200	71.2'	11,900
78	61.7'	12,100	73.8'	11,200	82.4'	10,400	78	55.5'	13,700	67.3'	12,800	75.1'	11,700
77	66.6'	12,100	78.1'	10,800	86.3'	9,900	77	60.4'	13,700	71.5'	12,300	79.1'	11,200
76	71.9'	12,100	83.0'	10,600	90.6'	9,700	76	65.0'	13,700	75.8'	12,100	83.0'	11,000
75	76.4'	11,700	87.3'	10,400	94.5'	9,500	75	69.2'	13,400	79.7'	11,700	86.9'	10,800
73	85.6'	11,000	95.8'	9,700	102.0'	9,000	73	77.4'	12,600	87.6'	11,000	94.2'	10,100
70	97.8'	9,900	108.0'	9,000	114.0'	8,400	70	89.2'	11,500	98.8'	10,100	105.0'	9,500
68	106.0'	9,500	115.0'	8,600	121.0'	7,900	68	96.5'	10,800	106.0'	9,700	112.0'	9,000
65	118.0'	8,800	127.0'	7,900	131.0'	7,500	65	107.0'	9,900	117.0'	9,000	121.0'	8,600
63	125.0'	8,200	134.0'	7,700	138.0'	7,300	63	115.0'	9,500	123.0'	8,600	128.0'	8,200
60	135.0'	7,500	143.0'	7,100	148.0'	6,800	60	125.0'	8,800	133.0'	8,200	137.0'	7,900
58	142.0'	7,100	150.0'	6,600	153.0'	6,400	58	132.0'	8,600	139.0'	7,900	142.0'	7,500
55	152.0'	6,600	159.0'	6,200	162.0'	6,000	55	141.0'	7,900	148.0'	7,500	151.0'	7,300
53	158.0'	6,200	165.0'	6,000	168.0'	5,700	53	146.0'	7,500	154.0'	7,300	156.0'	7,100
50	167.0'	5,500	173.0'	5,300	175.0'	5,100	50	155.0'	7,100	161.0'	6,600	163.0'	6,600
48	172.0'	5,100	178.0'	4,900	179.0'	4,900	48	160.0'	6,600	166.0'	6,400	168.0'	6,200
45	179.0'	4,600	185.0'	4,400	186.0'	4,400	45	167.0'	6,000	173.0'	5,700	174.0'	5,700
43	184.0'	4,200	190.0'	4,200			43	172.0'	5,700	177.0'	5,500		
40	191.0'	3,700	195.0'	3,500			40	178.0'	5,300	183.0'	4,900		
38	195.0'	3,300	199.0'	3,100			38	182.0'	4,600	186.0'	4,400		
35	200.0'	2,600	204.0'	2,400			35	188.0'	4,000	191.0'	3,700		
33	204.0'	2,400	207.0'	2,200			33	191.0'	3,700	194.0'	3,500		
30	209.0'	2,000	211.0'	1,800			30	196.0'	3,300	198.0'	3,100		
28	212.0'	1,800					28	199.0'	2,900	200.0'	2,900		
							25	203.0'	2,600	203.0'	2,400		
							23	205.0'	2,400				
							20	208.0'	2,200				

ON OUTRIGGERS FULLY EXTENDED 26' 10-7/8" (8.2m) SPREAD COUNTERWEIGHT 64,550 lbs (29,300 kg) 360° ROTATION													
C	172.5' (52.6m) Boom + 33.8' (10.3m)						C	114.9' (35.0m) Boom + 33.8' (10.3m)					
	0° offset		20° offset		40° offset			0° offset		20° offset		40° offset	
	R	W	R	W	R	W		R	W	R	W	R	W
81.5	33.8'	15,900	46.9'	15,900	56.8'	15,000	81.5			29.2'	23,400	37.1'	16,100
81	35.8'	15,900	48.9'	15,900	58.7'	14,800	81			30.5'	23,100	38.4'	15,900
80	40.4'	15,900	53.5'	15,900	62.7'	14,300	80			33.1'	22,500	41.0'	15,700
79	45.0'	15,900	57.7'	15,700	66.3'	13,900	79			35.8'	22,000	43.3'	15,400
78	49.2'	15,900	61.7'	15,200	70.2'	13,400	78			39.0'	21,400	45.9'	15,200
77	53.8'	15,900	64.6'	14,600	73.8'	13,200	77			41.3'	20,900	48.6'	15,200
76	57.7'	15,900	69.2'	14,100	77.1'	12,800	76			43.6'	20,500	50.9'	15,000
75	62.3'	15,900	72.8'	13,700	80.7'	12,600	75	37.1'	31,100	46.3'	20,100	53.2'	14,800
73	69.9'	15,000	80.1'	13,000	87.6'	11,900	73	42.3'	29,100	51.2'	19,200	57.7'	14,300
70	81.4'	13,700	90.9'	11,900	97.1'	11,000	70	49.9'	26,900	58.7'	18,100	64.3'	13,900
68	88.3'	13,000	97.4'	11,500	103.0'	10,600	68	54.8'	25,600	63.3'	17,400	68.9'	13,700
65	98.8'	11,900	107.0'	10,800	113.0'	10,100	65	62.0'	23,800	70.2'	16,800	75.1'	13,400
63	105.0'	11,500	114.0'	10,400	118.0'	9,700	63	66.6'	22,900	74.8'	16,300	79.4'	13,200
60	115.0'	10,600	123.0'	9,700	127.0'	9,300	60	73.5'	21,800	81.4'	15,700	85.3'	13,000
58	121.0'	9,900	129.0'	9,300	133.0'	9,000	58	77.8'	21,200	85.3'	15,200	89.2'	12,800
55	130.0'	9,300	136.0'	8,800	140.0'	8,400	55	84.3'	20,100	91.2'	14,800	94.8'	12,800
53	135.0'	8,800	142.0'	8,400	145.0'	8,200	53	87.9'	19,200	95.1'	14,300	98.1'	12,600
50	143.0'	8,400	149.0'	7,900	152.0'	7,700	50	93.8'	18,300	100.0'	14,100	103.0'	12,600
48	148.0'	7,900	154.0'	7,500	156.0'	7,300	48	97.4'	17,600	104.0'	13,900	106.0'	12,600
45	155.0'	7,300	160.0'	6,800	161.0'	6,800	45	103.0'	17,000	109.0'	13,400	111.0'	12,300
43	159.0'	6,800	164.0'	6,600			43	106.0'	16,500	112.0'	13,400		
40	165.0'	6,400	170.0'	6,000			40	111.0'	15,900	116.0'	13,200		
38	169.0'	5,700	173.0'	5,500			38	115.0'	15,400	119.0'	13,000		
35	174.0'	5,100	177.0'	4,900			35	119.0'	15,000	123.0'	13,000		
33	177.0'	4,600	180.0'	4,400			33	121.0'	14,800	125.0'	12,800		
30	182.0'	4,200	185.0'	4,000			30	125.0'	14,100	128.0'	12,800		
28	185.0'	3,700	187.0'	3,500			28	127.0'	13,700	130.0'	12,800		
25	188.0'	3,300	190.0'	3,300			25	131.0'	13,000	133.0'	12,600		
23	191.0'	3,100					23	132.0'	12,600				
20	193.0'	2,900					20	135.0'	12,100				

C : Loaded boom angle (°)
R : Load radius in feet
W : Rated lifting capacity in pounds

GR-1600XL RATED LIFTING CAPACITIES (IN POUNDS)

0°, 20° or 40° pinned offsets

ON OUTRIGGERS FULLY EXTENDED 26' 10-7/8" (8.2m) SPREAD COUNTERWEIGHT 64,550 lbs (29,300 kg) 360° ROTATION													
C	200.1' (61.0m) Boom + 59.1' (18.0m)						C	187.0' (57.0m) Boom + 59.1' (18.0m)					
	0° offset		20° offset		40° offset			0° offset		20° offset		40° offset	
	R	W	R	W	R	W		R	W	R	W	R	W
81.5	49.5'	8,200	73.5'	8,200	89.2'	7,100	81.5	43.6'	8,800	66.3'	8,800	81.4'	7,300
81	52.8'	8,200	75.5'	8,200	92.5'	7,100	81	46.3'	8,800	69.2'	8,800	84.0'	7,300
80	58.1'	8,200	82.0'	8,200	97.1'	6,800	80	51.5'	8,800	74.5'	8,800	88.9'	7,300
79	64.3'	8,200	87.6'	8,200	102.0'	6,800	79	56.8'	8,800	79.4'	8,600	92.9'	7,100
78	70.5'	8,200	92.9'	7,900	107.0'	6,600	78	62.3'	8,800	84.3'	8,400	97.8'	7,100
77	75.5'	8,200	97.8'	7,700	112.0'	6,600	77	67.6'	8,800	88.9'	8,200	102.0'	6,800
76	81.7'	8,200	103.0'	7,500	116.0'	6,600	76	72.8'	8,800	93.8'	8,200	106.0'	6,800
75	87.3'	8,200	107.0'	7,300	120.0'	6,400	75	78.1'	8,800	98.4'	7,900	110.0'	6,800
73	97.4'	8,200	116.0'	6,800	129.0'	6,400	73	88.3'	8,800	107.0'	7,700	118.0'	6,600
70	111.0'	7,500	129.0'	6,400	140.0'	6,000	70	103.0'	8,800	120.0'	7,300	130.0'	6,400
68	120.0'	7,300	137.0'	6,200	148.0'	5,700	68	112.0'	8,400	128.0'	7,100	136.0'	6,200
65	133.0'	6,600	150.0'	5,700	158.0'	5,300	65	124.0'	7,700	139.0'	6,600	147.0'	6,200
63	142.0'	6,400	157.0'	5,500	166.0'	5,300	63	132.0'	7,500	147.0'	6,400	154.0'	6,000
60	154.0'	5,700	168.0'	5,300	175.0'	4,900	60	143.0'	6,800	157.0'	6,200	163.0'	5,700
58	161.0'	5,500	175.0'	4,900	181.0'	4,900	58	151.0'	6,600	164.0'	6,000	169.0'	5,500
55	172.0'	5,100	185.0'	4,600	190.0'	4,400	55	161.0'	6,200	173.0'	5,500	177.0'	5,300
53	178.0'	4,600	190.0'	4,200	194.0'	4,000	53	167.0'	5,700	179.0'	5,300	182.0'	5,100
50	187.0'	4,000	198.0'	3,500	201.0'	3,500	50	176.0'	5,300	187.0'	4,900	189.0'	4,600
48	193.0'	3,500	203.0'	3,300	205.0'	3,300	48	181.0'	4,900	192.0'	4,400	193.0'	4,400
45	201.0'	3,100	210.0'	2,900	211.0'	2,600	45	189.0'	4,400	198.0'	4,000	199.0'	3,700
43	206.0'	2,900	214.0'	2,400			43	194.0'	4,000	203.0'	3,700		
40	213.0'	2,200	220.0'	2,000			40	201.0'	3,500	208.0'	3,100		
38	218.0'	2,000					38	205.0'	3,100	212.0'	2,600		
							35	211.0'	2,600	217.0'	2,200		
							33	215.0'	2,200	219.0'	2,000		
							30	220.0'	1,800				

ON OUTRIGGERS FULLY EXTENDED 26' 10-7/8" (8.2m) SPREAD COUNTERWEIGHT 64,550 lbs (29,300 kg) 360° ROTATION													
C	172.5' (52.6m) Boom + 59.1' (18.0m)						C	114.9' (35.0m) Boom + 59.1' (18.0m)					
	0° offset		20° offset		40° offset			0° offset		20° offset		40° offset	
	R	W	R	W	R	W		R	W	R	W	R	W
81.5	39.4'	10,400	61.4'	9,700	76.1'	7,500	81.5	24.3'	14,100	43.6'	11,900	59.1'	8,200
81	42.0'	10,400	63.7'	9,700	78.1'	7,500	81	26.3'	14,100	45.0'	11,700	60.4'	8,200
80	46.9'	10,400	68.6'	9,500	83.0'	7,500	80	29.5'	14,100	48.2'	11,500	63.3'	7,900
79	52.2'	10,400	72.8'	9,300	86.9'	7,300	79	33.5'	14,100	51.5'	11,200	65.9'	7,900
78	56.8'	10,400	77.1'	9,000	90.9'	7,300	78	36.4'	14,100	54.5'	11,000	68.6'	7,900
77	61.7'	10,400	81.7'	8,800	94.8'	7,300	77	39.7'	14,100	57.4'	10,600	71.2'	7,700
76	65.9'	10,400	86.0'	8,600	98.8'	7,100	76	42.7'	14,100	60.7'	10,400	73.8'	7,700
75	71.2'	10,400	90.2'	8,600	102.0'	7,100	75	45.9'	14,100	63.3'	10,100	76.8'	7,700
73	81.0'	10,400	98.4'	8,200	110.0'	6,800	73	51.8'	14,100	69.6'	9,900	81.7'	7,500
70	94.2'	10,400	111.0'	7,900	120.0'	6,600	70	61.4'	13,900	74.5'	9,300	88.9'	7,300
68	102.0'	9,900	118.0'	7,700	127.0'	6,600	68	66.6'	13,200	83.3'	9,000	93.5'	7,100
65	114.0'	9,300	129.0'	7,300	136.0'	6,400	65	75.1'	12,300	91.2'	8,600	101.0'	7,100
63	121.0'	8,800	136.0'	7,100	143.0'	6,400	63	80.7'	11,700	96.5'	8,400	105.0'	7,100
60	132.0'	8,400	146.0'	6,800	152.0'	6,200	60	88.9'	11,000	104.0'	7,900	112.0'	6,800
58	139.0'	7,900	152.0'	6,800	158.0'	6,200	58	94.2'	10,600	108.0'	7,900	116.0'	6,800
55	149.0'	7,300	162.0'	6,600	166.0'	6,200	55	101.0'	10,100	115.0'	7,500	122.0'	6,800
53	155.0'	7,100	167.0'	6,400	171.0'	6,200	53	106.0'	9,700	120.0'	7,500	125.0'	6,600
50	163.0'	6,400	175.0'	5,700	177.0'	5,500	50	113.0'	9,300	126.0'	7,300	130.0'	6,600
48	169.0'	6,000	179.0'	5,500	181.0'	5,300	48	118.0'	9,000	130.0'	7,300	134.0'	6,600
45	176.0'	5,300	186.0'	4,900	187.0'	4,900	45	124.0'	8,600	135.0'	7,100	138.0'	6,600
43	181.0'	5,100	190.0'	4,600			43	128.0'	8,400	138.0'	7,100		
40	188.0'	4,400	196.0'	4,000			40	134.0'	8,200	143.0'	6,800		
38	192.0'	4,000	199.0'	3,500			38	137.0'	7,900	146.0'	6,800		
35	198.0'	3,500	204.0'	3,100			35	142.0'	7,700	150.0'	6,800		
33	202.0'	3,100	207.0'	2,600			33	145.0'	7,500	153.0'	6,800		
30	208.0'	2,600	211.0'	2,200			30	150.0'	7,300	156.0'	6,800		
28	211.0'	2,400	213.0'	2,000			28	153.0'	7,300	158.0'	6,800		
25	215.0'	2,000	216.0'	1,800			25	156.0'	7,100	160.0'	6,800		
23	218.0'	1,800					23	158.0'	7,100				
							20	161.0'	6,800				

C :Loaded boom angle (°)
R :Load radius in feet
W :Rated lifting capacity in pounds

GR-1600XL RATED LIFTING CAPACITIES (IN POUNDS)

5° - 40° hydraulic offset - Optional

ON OUTRIGGERS FULLY EXTENDED 26' 10-7/8" (8.2m) SPREAD COUNTERWEIGHT 64,550 lbs (29,300 kg) 360° ROTATION													
C	200.1' (61.0m) Boom + 33.8' (10.3m)						C	187.0' (57.0m) Boom + 33.8' (10.3m)					
	5° offset		20° offset		40° offset			5° offset		20° offset		40° offset	
	R	W	R	W	R	W		R	W	R	W	R	W
81.5	48.2'	12,100	57.1'	12,100	66.9'	11,200	81.5	42.3'	13,700	51.5'	13,700	61.4'	12,800
81	51.2'	12,100	61.0'	12,100	69.2'	11,000	81	44.9'	13,700	54.1'	13,700	63.3'	12,600
80	56.4'	12,100	65.3'	11,900	74.1'	10,800	80	49.9'	13,700	58.7'	13,400	67.6'	12,100
79	61.7'	12,100	69.6'	11,500	78.7'	10,400	79	54.8'	13,700	63.3'	13,000	71.9'	11,900
78	67.3'	12,100	74.1'	11,000	82.7'	10,100	78	59.7'	13,700	67.6'	12,600	75.5'	11,500
77	71.9'	11,900	80.1'	10,800	86.9'	9,900	77	64.3'	13,700	71.9'	12,300	79.7'	11,200
76	76.4'	11,500	83.0'	10,400	91.2'	9,700	76	68.2'	13,200	76.1'	11,900	83.3'	10,800
75	80.4'	11,000	87.6'	10,100	94.8'	9,300	75	72.5'	12,800	79.7'	11,500	87.3'	10,600
73	89.6'	10,600	96.1'	9,700	103.0'	8,800	73	80.7'	11,900	87.9'	10,800	94.8'	10,100
70	102.0'	9,500	108.0'	8,800	114.0'	8,400	70	92.5'	11,000	99.4'	10,100	105.0'	9,500
68	110.0'	9,000	116.0'	8,400	121.0'	7,900	68	100.0'	10,400	106.0'	9,500	112.0'	9,000
65	122.0'	8,400	127.0'	7,900	132.0'	7,500	65	111.0'	9,500	117.0'	8,800	122.0'	8,400
63	129.0'	7,900	134.0'	7,500	138.0'	7,300	63	118.0'	9,300	124.0'	8,600	128.0'	8,200
60	139.0'	7,300	144.0'	6,800	148.0'	6,600	60	128.0'	8,600	133.0'	8,200	137.0'	7,700
58	146.0'	6,800	151.0'	6,600	154.0'	6,400	58	135.0'	8,200	139.0'	7,700	143.0'	7,500
55	155.0'	6,200	159.0'	6,000	163.0'	6,000	55	144.0'	7,700	148.0'	7,300	151.0'	7,100
53	161.0'	6,000	165.0'	5,700	168.0'	5,500	53	150.0'	7,300	154.0'	7,100	156.0'	6,800
50	169.0'	5,300	173.0'	5,100	175.0'	4,900	50	158.0'	6,800	161.0'	6,400	164.0'	6,400
48	175.0'	4,900	178.0'	4,600	180.0'	4,600	48	163.0'	6,400	166.0'	6,200	168.0'	6,000
45	182.0'	4,400	185.0'	4,200	186.0'	4,200	45	170.0'	5,700	173.0'	5,500	174.0'	5,500
43	187.0'	4,000	190.0'	4,000			43	174.0'	5,300	177.0'	5,300		
40	193.0'	3,500	195.0'	3,300			40	180.0'	4,900	183.0'	4,600		
38	197.0'	3,100	199.0'	2,900			38	184.0'	4,400	186.0'	4,200		
35	202.0'	2,400	204.0'	2,400			35	190.0'	3,700	191.0'	3,500		
33	206.0'	2,200	207.0'	2,000			33	193.0'	3,500	194.0'	3,300		
30	210.0'	1,800					30	198.0'	2,900	198.0'	2,900		
							28	200.0'	2,600	201.0'	2,600		
							25	204.0'	2,400	203.0'	2,200		
							23	206.0'	2,200				
							20	208.0'	2,000				

ON OUTRIGGERS FULLY EXTENDED 26' 10-7/8" (8.2m) SPREAD COUNTERWEIGHT 64,550 lbs (29,300 kg) 360° ROTATION													
C	172.5' (52.6m) Boom + 33.8' (10.3m)						C	114.9' (35.0m) Boom + 33.8' (10.3m)					
	5° offset		20° offset		40° offset			5° offset		20° offset		40° offset	
	R	W	R	W	R	W		R	W	R	W	R	W
81.5	37.1'	15,900	46.9'	15,900	57.1'	15,000	81.5			29.2'	23,400	37.1'	16,100
81	39.4'	15,900	49.2'	15,900	59.1'	14,800	81			30.5'	23,100	38.4'	15,900
80	44.0'	15,900	53.5'	15,900	63.0'	14,300	80			33.1'	22,500	41.0'	15,700
79	48.6'	15,900	57.7'	15,400	66.6'	13,900	79			35.8'	22,000	43.3'	15,400
78	52.8'	15,900	61.7'	15,000	70.2'	13,400	78			39.0'	21,400	45.9'	15,200
77	57.4'	15,900	65.3'	14,600	73.8'	13,000	77			41.3'	20,900	48.6'	15,200
76	61.7'	15,900	69.2'	14,100	77.4'	12,800	76			43.6'	20,500	50.9'	15,000
75	64.3'	15,200	73.2'	13,700	80.7'	12,300	75	38.7'	28,200	46.3'	20,100	53.1'	14,800
73	72.2'	14,300	80.1'	12,800	87.6'	11,900	73	44.0'	26,900	51.2'	19,200	57.7'	14,300
70	84.3'	13,000	90.6'	11,900	97.1'	11,000	70	51.2'	24,900	58.7'	18,100	64.6'	13,900
68	91.5'	12,300	97.8'	11,500	104.0'	10,600	68	56.4'	23,800	63.3'	17,400	68.9'	13,700
65	102.0'	11,500	107.0'	10,600	113.0'	9,900	65	63.3'	22,300	70.2'	16,800	75.1'	13,400
63	109.0'	11,000	114.0'	10,100	118.0'	9,700	63	67.9'	21,200	74.8'	16,300	79.4'	13,200
60	118.0'	10,100	123.0'	9,700	127.0'	9,300	60	74.8'	19,800	81.4'	15,700	85.3'	13,000
58	124.0'	9,700	129.0'	9,300	133.0'	8,800	58	79.1'	19,200	85.3'	15,200	89.2'	12,800
55	133.0'	9,000	137.0'	8,600	140.0'	8,400	55	85.3'	18,100	91.5'	14,800	94.8'	12,600
53	138.0'	8,600	142.0'	8,400	145.0'	7,900	53	89.2'	17,400	95.1'	14,300	98.1'	12,600
50	146.0'	8,200	149.0'	7,700	151.0'	7,500	50	95.1'	16,800	101.0'	14,100	103.0'	12,600
48	151.0'	7,700	154.0'	7,300	156.0'	7,100	48	99.0'	16,300	104.0'	13,900	106.0'	12,300
45	157.0'	7,100	160.0'	6,600	162.0'	6,600	45	104.0'	15,700	109.0'	13,400	111.0'	12,300
43	162.0'	6,600	164.0'	6,400			43	107.0'	15,400	112.0'	13,400		
40	168.0'	6,000	170.0'	5,700			40	112.0'	15,000	116.0'	13,200		
38	171.0'	5,500	173.0'	5,300			38	115.0'	14,600	119.0'	13,000		
35	176.0'	4,900	178.0'	4,600			35	120.0'	14,300	123.0'	13,000		
33	179.0'	4,400	181.0'	4,200			33	122.0'	14,100	125.0'	12,800		
30	183.0'	3,700	185.0'	3,700			30	126.0'	13,900	129.0'	12,800		
28	186.0'	3,500	187.0'	3,300			28	128.0'	13,200	131.0'	12,800		
25	190.0'	3,100	190.0'	3,100			25	131.0'	12,600	133.0'	12,300		
23	192.0'	2,900					23	133.0'	12,300				
20	194.0'	2,600					20	135.0'	11,900				

C : Loaded boom angle (°)
R : Load radius in feet
W : Rated lifting capacity in pounds

GR-1600XL RATED LIFTING CAPACITIES (IN POUNDS)

5° - 40° hydraulic offset - Optional

ON OUTRIGGERS FULLY EXTENDED 26' 10-7/8" (8.2m) SPREAD COUNTERWEIGHT 64,550 lbs (29,300 kg) 360° ROTATION													
C	200.1' (61.0m) Boom + 59.1' (18.0m)						C	187.0' (57.0m) Boom + 59.1' (18.0m)					
	5° offset		20° offset		40° offset			5° offset		20° offset		40° offset	
	R	W	R	W	R	W		R	W	R	W	R	W
81.5	56.1'	8,200	72.2'	8,200	88.9'	7,100	81.5	47.9'	8,800	65.6'	8,800	81.0'	7,300
81	59.1'	8,200	74.5'	8,200	91.9'	7,100	81	49.2'	8,800	68.2'	8,800	83.7'	7,300
80	65.3'	8,200	81.0'	8,200	97.1'	6,800	80	56.4'	8,800	73.8'	8,800	88.6'	7,100
79	70.9'	8,200	86.3'	8,200	102.0'	6,800	79	61.7'	8,800	78.1'	8,600	92.8'	7,100
78	76.8'	8,200	91.5'	7,900	107.0'	6,600	78	66.6'	8,800	83.3'	8,400	97.4'	7,100
77	82.0'	8,200	96.1'	7,700	112.0'	6,600	77	71.9'	8,800	87.6'	8,200	102.0'	6,800
76	87.9'	8,200	101.0'	7,500	116.0'	6,600	76	77.1'	8,800	92.5'	7,900	106.0'	6,800
75	93.5'	8,200	106.0'	7,300	119.0'	6,400	75	82.0'	8,800	97.1'	7,900	110.0'	6,600
73	103.0'	7,700	115.0'	6,800	129.0'	6,200	73	92.2'	8,800	106.0'	7,700	118.0'	6,600
70	117.0'	7,100	128.0'	6,400	140.0'	5,700	70	106.0'	8,200	119.0'	7,300	129.0'	6,400
68	126.0'	6,800	135.0'	6,000	147.0'	5,500	68	114.0'	7,700	127.0'	7,100	137.0'	6,200
65	138.0'	6,200	149.0'	5,700	158.0'	5,300	65	126.0'	7,300	138.0'	6,600	147.0'	6,200
63	147.0'	6,000	156.0'	5,500	165.0'	5,100	63	135.0'	7,100	146.0'	6,400	154.0'	6,000
60	159.0'	5,500	167.0'	5,100	175.0'	4,900	60	146.0'	6,600	156.0'	6,000	163.0'	5,700
58	166.0'	5,100	174.0'	4,900	181.0'	4,600	58	153.0'	6,400	163.0'	5,700	169.0'	5,500
55	176.0'	4,600	183.0'	4,400	189.0'	4,200	55	163.0'	6,000	172.0'	5,500	177.0'	5,300
53	182.0'	4,200	189.0'	4,000	194.0'	3,700	53	169.0'	5,500	177.0'	5,100	182.0'	4,900
50	191.0'	3,700	197.0'	3,500	200.0'	3,300	50	177.0'	4,900	186.0'	4,600	189.0'	4,400
48	197.0'	3,300	201.0'	3,100	205.0'	3,100	48	183.0'	4,600	190.0'	4,200	193.0'	4,200
45	205.0'	2,900	209.0'	2,600	211.0'	2,400	45	191.0'	4,000	198.0'	3,700	199.0'	3,700
43	210.0'	2,600	213.0'	2,400			43	196.0'	3,700	202.0'	3,500		
40	216.0'	2,000	219.0'	1,800			40	202.0'	3,300	207.0'	2,900		
							38	207.0'	2,900	211.0'	2,600		
							35	212.0'	2,200	216.0'	2,000		
							33	216.0'	2,000	219.0'	1,800		

ON OUTRIGGERS FULLY EXTENDED 26' 10-7/8" (8.2m) SPREAD COUNTERWEIGHT 64,550 lbs (29,300 kg) 360° ROTATION													
C	172.5' (52.6m) Boom + 59.1' (18.0m)						C	114.9' (35.0m) Boom + 59.1' (18.0m)					
	5° offset		20° offset		40° offset			5° offset		20° offset		40° offset	
	R	W	R	W	R	W		R	W	R	W	R	W
81.5	44.9'	10,400	61.7'	9,700	76.1'	7,500	81.5	30.2'	14,100	44.6'	11,900	58.7'	8,200
81	47.6'	10,400	64.3'	9,700	78.4'	7,500	81	31.5'	14,100	45.9'	11,700	60.4'	8,200
80	52.8'	10,400	69.2'	9,500	82.7'	7,500	80	35.1'	14,100	49.2'	11,500	63.3'	7,900
79	57.7'	10,400	73.5'	9,300	86.6'	7,300	79	38.4'	14,100	52.5'	11,200	65.9'	7,900
78	63.0'	10,400	78.1'	9,000	90.9'	7,300	78	41.7'	14,100	55.4'	11,000	68.6'	7,900
77	67.3'	10,400	82.0'	8,800	94.8'	7,300	77	44.6'	14,100	58.4'	10,600	71.2'	7,700
76	72.2'	10,400	86.3'	8,600	98.1'	7,100	76	47.9'	14,100	61.0'	10,400	73.8'	7,700
75	76.8'	10,400	90.9'	8,600	102.0'	7,100	75	51.2'	14,100	64.0'	10,100	76.4'	7,700
73	86.6'	10,100	98.8'	8,200	110.0'	6,800	73	57.1'	13,200	70.2'	9,900	81.7'	7,500
70	98.0'	9,500	111.0'	7,700	120.0'	6,600	70	65.9'	12,300	74.8'	9,300	88.9'	7,300
68	114.0'	9,300	118.0'	7,500	127.0'	6,600	68	71.5'	11,700	83.7'	9,000	93.5'	7,100
65	119.0'	8,800	129.0'	7,300	136.0'	6,400	65	80.1'	11,000	91.5'	8,600	100.0'	7,100
63	126.0'	8,400	135.0'	7,100	143.0'	6,400	63	85.3'	10,600	96.5'	8,400	105.0'	7,100
60	136.0'	7,900	146.0'	6,800	152.0'	6,200	60	93.2'	10,100	104.0'	7,900	112.0'	6,800
58	143.0'	7,500	153.0'	6,800	157.0'	6,200	58	98.1'	9,700	109.0'	7,900	116.0'	6,800
55	153.0'	7,100	162.0'	6,600	165.0'	6,200	55	105.0'	9,300	115.0'	7,500	122.0'	6,600
53	159.0'	6,600	167.0'	6,200	170.0'	6,000	53	110.0'	9,000	120.0'	7,500	125.0'	6,600
50	167.0'	6,000	174.0'	5,500	176.0'	5,300	50	117.0'	8,600	126.0'	7,300	130.0'	6,600
48	173.0'	5,500	179.0'	5,300	180.0'	5,100	48	121.0'	8,400	130.0'	7,300	134.0'	6,600
45	180.0'	5,100	186.0'	4,900	186.0'	4,600	45	127.0'	8,200	135.0'	7,100	138.0'	6,600
43	185.0'	4,900	190.0'	4,400			43	131.0'	7,900	138.0'	7,100		
40	191.0'	4,200	195.0'	3,700			40	136.0'	7,700	143.0'	6,800		
38	196.0'	3,700	199.0'	3,300			38	143.0'	7,500	146.0'	6,800		
35	201.0'	3,100	204.0'	2,900			35	145.0'	7,300	150.0'	6,800		
33	205.0'	2,900	207.0'	2,600			33	148.0'	7,300	153.0'	6,800		
30	210.0'	2,400	211.0'	2,200			30	152.0'	7,100	156.0'	6,800		
28	213.0'	2,200	213.0'	2,000			28	155.0'	7,100	158.0'	6,800		
25	217.0'	1,800					25	158.0'	6,800	160.0'	6,800		
							23	160.0'	6,800				
							20	163.0'	6,800				

C : Loaded boom angle (°)
R : Load radius in feet
W : Rated lifting capacity in pounds

WARNING AND OPERATING INSTRUCTIONS FOR LIFTING CAPACITIES

GENERAL

1. RATED LIFTING CAPACITIES apply only to the machine as originally manufactured and normally equipped by TADANO LTD. Modifications to the machine or use of optional equipment other than that specified can result in a reduction of capacity.
2. Hydraulic cranes can be hazardous if improperly operated or maintained. Operation and maintenance of this machine must be in compliance with information in the **Operation and Maintenance Manuals** supplied with the crane. If this manual is missing, order a replacement through the distributor.
3. The operator and other personnel associated with this machine shall fully acquaint themselves with the latest applicable ASME B30.5 safety standards for cranes as mentioned in OSHA CFR29 part 1926.

SET UP

1. Rated lifting capacities on the load chart are the maximum allowable crane capacities. They are based on the machine standing level on firm supporting surface under ideal job conditions. Depending on the nature of the supporting surface, it may be necessary to have structural supports under the outrigger floats or tires to spread the loads to a larger surface.
2. For outrigger operation, outriggers shall be properly extended with tires free of supporting surface before operating crane.

OPERATION

1. Rated lifting capacities have been tested to and meet minimum requirements of SAE J1063-Cantilevered Boom Crane Structures Method of Test.
2. Rated lifting capacities do not exceed 85 % of the tipping load on outriggers fully extended as determined by SAE J765-Crane Stability Test Code.
Rated lifting capacities for partially extended outriggers are determined from the formula, Rated Lifting Capacities = (Tipping Load - 0.1 x Tip Reaction) / 1.25.
3. Rated lifting capacities above bold lines in the chart are based on crane strength and those below, on its stability. They are based on actual load radius increased by boom deflection.
4. The weight of handling device such as hook blocks, slings, etc., must be considered as part of the load and must be deducted from the lifting capacities.
5. Rated lifting capacities are based on freely suspended loads and make no allowance for such factors as the effect of wind, sudden stopping of loads, supporting surface conditions, inflation of tires, operating speeds, side loads, etc. Side pull on the boom or jib is extremely dangerous. Such action can damage the boom, jib or swing mechanism, and lead to overturning the crane.
6. Rated lifting capacities do not account for wind on lifted load or boom. We recommend against working under the condition that the load is out of control due to a strong wind. During boom lift, consider that the rated lifting capacity is reduced by 50% when the wind speed is 20mph(9m/s) to 27mph(12m/s); reduced by 70% when the wind speed is 27mph(12m/s) to 31mph(14m/s). If the wind speed is 31mph(14m/s) or over, stop operation. During jib lift, stop operation if the wind speed is 20mph(9m/s).
7. Rated lifting capacities at load radius shall not be exceeded. Do not tip the crane to determine allowable loads.
8. Do not operate at boom lengths, radii, or boom angle, where no capacities are shown. Crane may overturn without any load on the hook.
9. When boom length is between values listed, refer to the rated lifting capacities of the next longer and next shorter booms for the same radius. The lesser of the two rated lifting capacities shall be used.
10. When making lifts at a load radius not shown, use the next longer radius to determine allowable capacity.

11. Load per line should not exceed 15,900 lbs. (7,200kg) for main hoist and auxiliary hoist.
12. Check the actual number of parts of line with LOAD MOMENT INDICATOR (AML-C) before operation. Maximum lifting capacity is restricted by the number of parts of line of LOAD MOMENT INDICATOR (AML-C). Limited capacity is as determined from the formula, Single line pull for main hoist 15,900 lbs. (7,200kg) x number of parts of line.
13. The boom angle before loading should be greater to account for deflection. For rated lifting capacities, the loaded boom angle and the load radius is for reference only.
14. Do not operate extension or retraction of the boom with loads. Extension or retraction of the boom with loads may be attempted within the limits of the RATED LIFTING CAPACITIES. The ability to telescope loads is limited by hydraulic pressure, boom angle, boom length, crane maintenance, etc.
15. For lifting capacity of single top, deduct the weight of the load handling equipment from the rated lifting capacity of the boom. For the lifting capacity of single top, the net capacity shall not exceed 15,900lbs (7,200kg) including main boom hook mass attached to the boom.
16. When the base jib or top jib or both jibs are removed, set the jib state switch to the REMOVED position.
17. When erecting and stowing jib, be sure to retain it by hand or by other means to prevent its free movement.
18. Use "ANTI-TWO BLOCK" disable switch when erecting and stowing jib and when stowing hook block. While the switch is pushed, the hoist does not stop, even when overwind condition occurs.
19. When lifting a load by using jib (aux. hoist) and boom (main hoist) simultaneously, do the following:
 - Enter the operation status as jib operation, not as boom operation.
 - Before starting operation, make sure that mass of load is within rated lifting capacity for jib.

DEFINITIONS

1. Load Radius: Horizontal distance from a projection of the axis of rotation to supporting surface before loading to the center of the vertical hoist line or tackle with load applied.
2. Loaded Boom Angle: The angle between the boom base section and the horizontal, after lifting the rated lifting capacity at the load radius.
3. Working Area: Area measured in a circular arc about the centerline of rotation.
4. Freely Suspended Load: Load hanging free with no direct external force applied except by the hoist line.
5. Side Load: Horizontal side force applied to the lifted load either on the ground or in the air.

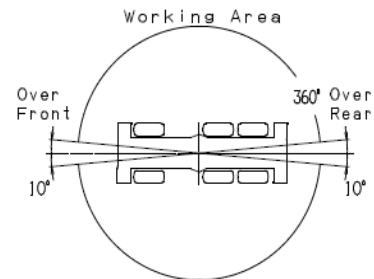
GR-1600XL RATED LIFTING CAPACITIES (IN POUNDS)

ON RUBBER												
Without counterweight												
A	Stationary											
	Over Front and Rear						360° Rotation					
	42.8'		57.2'		71.6'		42.8'		57.2'		71.6'	
B	C	(13.1m)	C	(17.4m)	C	(21.8m)	C	(13.1m)	C	(17.4m)	C	(21.8m)
8'	73	22,000	78	22,000	81	22,000	73	22,000	78	22,000	81	22,000
10'	70	22,000	76	22,000	79	22,000	70	22,000	76	22,000	79	22,000
12'	67	22,000	73	22,000	77	22,000	67	20,500	73	22,000	77	22,000
15'	63	22,000	70	22,000	75	22,000	63	13,700	70	17,400	75	19,400
20'	54	14,800	65	18,100	71	19,600	54	6,200	65	9,900	71	12,100
25'	45	9,000	59	12,300	66	14,100			59	4,900	66	7,100
30'	33	3,500	53	7,700	62	9,700					62	3,300
35'			45	4,000	57	6,000						
D	0		45		57		54		59		62	
Telescoping conditions (%)												
2nd boom	0		0		0		0		0		0	
3rd boom	0		0		0		0		0		0	
4th boom	0		0		0		0		0		0	
5th boom	0		0		0		0		0		0	
Top boom	0		45		90		0		45		90	

- A** :Boom length in feet
- B** :Load radius in feet
- C** :Loaded boom angle (°)
- D** :Minimum boom angle (°) for indicated length (no load)

NOTE: The lifting capacity data stored in the LOAD MOMENT INDICATOR (AML-C) is based on the standard number of parts of line listed in the chart. Standard number of parts of line for rubber operation should be according to the following table.

Boom length in feet (meters)	42.8' (13.1m)	42.8' to 71.6' (13.1m to 21.8m)
Number of parts of line	4	4



WARNING AND OPERATING INSTRUCTIONS FOR ON RUBBER LIFTING CAPACITIES

1. Rated lifting capacities on rubber are in pounds and do not exceed 75 % of tipping loads as determined by SAE J765-Crane Stability Test Code.
2. On rubber lifting is only permitted without counterweight and stationary. Creep operation is prohibited.
3. Rated lifting capacities shown in the chart are based on condition that crane is set on firm level surfaces with suspension fully-retracted. Those above bold lines are based on tire capacity and those below, on crane stability. They are based on actual load radius increased by tire deformation and boom deflection.
4. If the suspension cylinders contain air, the axle will not be locked completely and rated lifting capacities may not be obtainable. Bleed the cylinders according to the operation safety and maintenance manual.
5. Rated lifting capacities are based on proper tire inflation, capacity and condition. Damaged tires are hazardous to safe operation of crane.

6. Tires shall be inflated to correct air pressure.

Tires	Air Pressure
29.5R25	94 psi (650kPa)

7. Over front and rear operation shall be performed within 10 degrees in front/rear of chassis.
8. On rubber lifting with "jib" is not permitted. Maximum permissible boom length is 71.6'. (21.8m).
9. When making lift on rubber stationary, set parking brake.

GR-1600XL Axle weight distribution chart

0°, 20° or 40° pinned offsets fly jib	Pounds				Kilograms			
	Total	Axle 1	Axle 2	Axle 3	Total	Axle 1	Axle 2	Axle 3
Base machine incl. standard fly jib and auxiliary winch	133,259	78,825	26,693	27,743	60,445	35,754	12,108	12,584
Remove: 7.9 ton (7.2 metric ton) hook ball	-661	-928	134	134	-300	-421	61	61
Auxiliary winch & wire rope	-2,650	1,080	-1,865	-1,865	-1,202	490	-846	-846
Front and rear outrigger boxes and beams	-19,758	-7,635	-6,063	-6,063	-8,962	-3,463	-2,750	-2,750
2 section manual offset fly jib	-3,197	-5,073	939	939	-1,450	-2,301	426	426
Boom	-34,445	-43,094	4,325	4,325	-15,624	-19,547	1,962	1,962
Add: Counterweight 24,500 lbs (11,100 kg)	24,515	-7,388	15,953	15,953	11,120	-3,351	7,236	7,236
Counterweight 40,100 lbs (18,200 kg)	40,036	-12,066	26,050	26,050	18,160	-5,473	11,816	11,816
110 ton (100 metric ton) hook block	2,381	3,904	-763	-763	1,080	1,771	-346	-346

5° - 40° hydraulic offset - Optional	Pounds				Kilograms			
	Total	Axle 1	Axle 2	Axle 3	Total	Axle 1	Axle 2	Axle 3
Base machine incl. standard fly jib and auxiliary winch	134,028	80,361	26,310	27,359	60,794	36,451	11,934	12,410
Remove: 7.9 ton (7.2 metric ton) hook ball	-661	-928	134	134	-300	-421	61	61
Auxiliary winch & wire rope	-2,650	1,080	-1,865	-1,865	-1,202	490	-846	-846
Front and rear outrigger boxes and beams	-19,758	-7,635	-6,063	-6,063	-8,962	-3,463	-2,750	-2,750
2 section hydraulic offset fly jib	-3,417	-5,585	1,085	1,085	-1,550	-2,533	492	492
Boom	-34,996	-44,183	4,592	4,592	-15,874	-20,041	2,083	2,083
Add: Counterweight 24,500 lbs (11,100 kg)	24,515	-7,388	15,953	15,953	11,120	-3,351	7,236	7,236
Counterweight 40,100 lbs (18,200 kg)	40,036	-12,066	26,050	26,050	18,160	-5,473	11,816	11,816
110 ton (100 metric ton) hook block	2,381	3,904	-763	-763	1,080	1,771	-346	-346

GR-1600XL RATED LIFTING CAPACITIES(IN POUNDS)

ON OUTRIGGERS FULLY EXTENDED 26' 10-7/8" (8.20m) SPREAD												
COUNTERWEIGHT 0lbs (0kg)												
360° ROTATION												
A \ B	42.8' (13.1m)	57.2' (17.4m)	71.6' (21.8m)	86.1' (26.2m)	100.5' (30.6m)	114.9' (35.0m)	129.3' (39.4m)	143.7' (43.8m)	158.1' (48.2m)	172.5' (52.6m)	187.0' (57.0m)	200.1' (61.0m)
8'	265,900	200,000	174,200									
10'	232,600	200,000	174,200									
12'	205,500	200,000	174,200	145,500								
15'	173,300	174,200	172,800	145,500	111,800							
20'	128,500	129,900	130,300	129,600	106,300	84,700						
25'	98,300	99,400	99,900	101,900	101,000	77,600	66,400					
30'	68,800	75,000	76,300	75,000	78,500	76,700	61,100	52,700				
35'	48,500	54,200	57,100	57,800	57,100	55,600	53,800	48,900	41,700	33,100		
45'		32,400	35,100	37,000	34,800	36,600	35,100	36,400	35,100	33,100	26,500	22,900
50'			28,400	30,400	30,200	30,600	28,700	30,000	30,200	29,500	26,500	22,900
60'			19,600	21,600	21,800	22,300	22,300	22,000	21,200	20,500	18,700	18,300
65'				18,300	18,700	19,200	19,000	18,700	18,100	17,400	15,700	15,200
75'				13,700	13,900	14,300	14,100	13,900	13,200	12,600	11,000	10,600
80'					12,100	12,300	12,300	12,100	11,200	10,600	9,300	8,800
90'					9,300	9,500	9,300	9,000	8,400	7,700	6,200	6,000
95'						8,400	7,900	7,700	7,100	6,400	4,900	4,600
105'							6,400	6,000	5,700	5,100	4,400	2,900
110'								5,300	4,900	4,200	3,500	
120'								3,700	3,500	2,900		
125'									2,900	2,200		
130'									2,400			

A : Boom length in feet

B : Load radius in feet

GR-1600XL RATED LIFTING CAPACITIES(IN POUNDS)

ON OUTRIGGERS MID EXTENDED 23' 11-3/8" (7.30m) SPREAD												
COUNTERWEIGHT 0lbs (0kg)												
360° ROTATION												
A \ B	42.8' (13.1m)	57.2' (17.4m)	71.6' (21.8m)	86.1' (26.2m)	100.5' (30.6m)	114.9' (35.0m)	129.3' (39.4m)	143.7' (43.8m)	158.1' (48.2m)	172.5' (52.6m)	187.0' (57.0m)	200.1' (61.0m)
8'	256,800	200,000	174,200									
10'	223,500	200,000	174,200									
12'	196,700	196,400	174,200	145,500								
15'	164,900	165,800	166,200	145,500	111,800							
20'	127,400	128,300	128,800	128,100	106,300	84,700						
25'	77,200	81,600	81,600	83,800	82,200	77,600	66,400					
30'	50,500	56,400	59,300	60,200	59,500	58,000	56,200	52,700				
35'	35,500	40,800	43,700	46,100	43,700	45,400	43,900	42,500	41,400	33,100		
45'		23,800	26,200	28,400	28,700	29,300	29,100	28,900	28,000	27,300	26,200	22,900
50'			21,200	23,100	23,400	23,800	23,800	23,600	22,700	22,000	20,900	20,900
60'			13,900	15,900	16,100	16,500	16,500	16,300	15,400	14,800	13,700	13,700
65'				13,200	13,400	13,900	13,900	13,700	12,800	12,100	11,200	11,200
75'				9,300	9,500	9,900	9,700	9,500	8,800	8,200	7,300	7,300
80'					7,900	8,400	8,200	7,900	7,300	6,600	5,700	5,700
90'					5,700	6,000	5,700	5,500	4,900	4,200	3,300	
95'						4,900	4,600	4,400	3,700	3,100		
105'						3,300	3,100	2,900				
110'							2,200					

A : Boom length in feet

B : Load radius in feet

GR-1600XL RATED LIFTING CAPACITIES(IN POUNDS)

ON OUTRIGGERS MID EXTENDED 18' 1/2" (5.50m) SPREAD												
COUNTERWEIGHT 0lbs (0kg)												
360° ROTATION												
B \ A	42.8' (13.1m)	57.2' (17.4m)	71.6' (21.8m)	86.1' (26.2m)	100.5' (30.6m)	114.9' (35.0m)	129.3' (39.4m)	143.7' (43.8m)	158.1' (48.2m)	172.5' (52.6m)	187.0' (57.0m)	200.1' (61.0m)
8'	232,800	200,000	174,200									
10'	199,700	199,700	174,200									
12'	173,700	174,200	174,200	145,500								
15'	143,700	144,800	145,100	144,600	111,800							
20'	71,000	77,600	81,100	81,600	81,100	77,600	57,300					
25'	43,000	48,500	51,600	54,200	51,600	53,600	51,800	48,700				
30'	28,200	33,300	36,200	38,400	38,800	39,200	39,200	39,000	36,200			
35'	19,200	23,800	26,500	28,700	29,100	29,500	29,500	29,100	28,400	27,300		
45'		13,000	15,400	17,200	17,600	18,100	18,100	17,900	17,000	16,300	14,600	13,900
50'			11,900	13,700	14,100	14,600	14,300	14,100	13,400	12,800	11,200	10,800
60'			6,800	8,600	9,000	9,500	9,300	9,000	8,400	7,700	6,400	6,000
65'				6,800	7,100	7,500	7,500	7,300	6,600	6,000		
75'				4,200	4,400	4,600	4,600	4,400	3,700			
80'					3,300	3,500	3,500	3,300	2,400			

A :Boom length in feet

B :Load radius in feet

GR-1600XL RATED LIFTING CAPACITIES(IN POUNDS)

ON OUTRIGGERS MIN EXTENDED 9' 9-3/4" (2.99m) SPREAD												
COUNTERWEIGHT 0lbs (0kg)												
360° ROTATION												
A \ B	42.8' (13.1m)	57.2' (17.4m)	71.6' (21.8m)	86.1' (26.2m)	100.5' (30.6m)	114.9' (35.0m)	129.3' (39.4m)	143.7' (43.8m)	158.1' (48.2m)	172.5' (52.6m)	187.0' (57.0m)	200.1' (61.0m)
8'	175,500	169,300	159,200									
10'	102,500	105,200	103,000	101,900								
12'	68,300	75,400	79,400	81,600								
15'	42,500	48,500	51,800	54,200	51,600							
20'	22,300	27,100	30,000	32,200	32,600	33,100	29,300					
25'	12,100	16,500	19,200	21,200	21,600	22,000	22,000	20,900				
30'	6,000	10,100	12,600	14,600	15,000	15,400	15,200	14,800	13,000			
35'		6,000	8,200	10,100	10,400	10,800	10,800	10,400	8,800			
45'			2,900	4,400	4,900	5,300	5,300	4,900				
50'				2,600	3,100	3,300	3,300					

A : Boom length in feet

B : Load radius in feet

GR-1600XL RATED LIFTING CAPACITIES(IN POUNDS)

ON OUTRIGGERS FULLY EXTENDED 26' 10-7/8" (8.20m) SPREAD												
COUNTERWEIGHT 40,100lbs (18,200kg)												
360° ROTATION												
A \ B	42.8' (13.1m)	57.2' (17.4m)	71.6' (21.8m)	86.1' (26.2m)	100.5' (30.6m)	114.9' (35.0m)	129.3' (39.4m)	143.7' (43.8m)	158.1' (48.2m)	172.5' (52.6m)	187.0' (57.0m)	200.1' (61.0m)
8'	** 320,000	200,000	174,200									
10'	241,400	200,000	174,200									
12'	214,500	200,000	174,200	145,500								
15'	182,500	182,300	174,200	145,500	111,800							
20'	143,700	144,600	144,800	138,700	106,300	84,700						
25'	115,300	116,400	116,800	116,200	106,300	77,600	66,400					
30'	92,600	93,700	94,100	93,500	95,000	77,600	61,100	52,700				
35'	48,700	77,600	78,000	79,600	78,900	74,700	54,900	48,900	41,700	33,100		
45'		58,000	57,300	58,000	60,000	58,900	46,700	43,000	37,700	33,100	26,500	22,900
50'			51,400	50,500	51,400	50,000	43,900	39,200	35,500	32,000	26,500	22,900
60'			37,500	38,100	37,500	36,600	37,700	33,500	31,100	28,400	26,000	22,900
65'				33,300	32,600	34,200	32,800	31,100	28,900	26,900	24,700	22,700
75'				25,800	25,400	26,700	25,600	25,100	24,900	24,000	22,300	20,500
80'					22,500	23,800	22,700	23,600	22,500	21,600	21,200	19,600
90'					18,300	19,200	18,100	19,000	18,700	18,700	17,600	17,600
95'						17,400	16,300	17,000	17,400	16,800	15,900	15,900
105'						15,700	13,900	15,000	14,300	13,700	12,800	12,800
110'							13,200	13,700	13,000	12,300	11,500	11,500
120'							11,700	11,500	10,600	10,100	9,000	9,000
125'								10,400	9,700	9,000	8,200	8,200
130'								9,500	8,800	8,200	7,300	7,300
140'									7,300	6,600	5,700	5,700
145'									6,600	6,000	5,100	5,100
155'										4,900	3,700	3,700
160'										4,400	3,300	3,300
170'											2,200	2,200

**Over front with special equipment

A : Boom length in feet
B : Load radius in feet

GR-1600XL RATED LIFTING CAPACITIES(IN POUNDS)

ON OUTRIGGERS MID EXTENDED 23' 11-3/8" (7.30m) SPREAD												
COUNTERWEIGHT 40,100lbs (18,200kg)												
360° ROTATION												
B \ A	42.8' (13.1m)	57.2' (17.4m)	71.6' (21.8m)	86.1' (26.2m)	100.5' (30.6m)	114.9' (35.0m)	129.3' (39.4m)	143.7' (43.8m)	158.1' (48.2m)	172.5' (52.6m)	187.0' (57.0m)	200.1' (61.0m)
8'	267,000	200,000	174,200									
10'	233,700	200,000	174,200									
12'	206,800	200,000	174,200	145,500								
15'	175,300	175,000	174,200	145,500	111,800							
20'	137,100	138,000	138,200	137,800	106,300	84,700						
25'	111,100	112,000	112,400	112,000	106,300	77,600	66,400					
30'	92,400	93,300	93,700	93,000	94,600	77,600	61,100	52,700				
35'	48,700	73,900	71,000	73,600	72,300	74,700	54,900	48,900	41,700	33,100		
45'		46,700	49,200	49,800	49,200	47,800	46,700	43,000	37,700	33,100	26,500	22,900
50'			41,000	41,400	41,000	41,700	41,200	39,200	35,500	32,000	26,500	22,900
60'			29,800	30,400	29,500	31,100	29,800	30,200	29,500	28,400	26,000	22,900
65'				27,600	25,600	26,900	25,800	26,700	25,600	25,600	24,700	22,700
75'				21,400	21,400	21,400	19,600	21,200	20,900	20,300	19,200	19,200
80'					19,200	19,600	18,300	19,200	18,500	17,900	16,800	16,800
90'					15,400	15,700	15,400	15,200	14,600	13,900	13,000	13,000
95'						14,100	13,900	13,700	13,000	12,300	11,200	11,500
105'						11,500	11,200	11,000	10,100	9,700	8,600	8,600
110'							10,100	9,900	9,000	8,600	7,500	7,500
120'							8,200	7,900	7,300	6,600	5,500	5,700
125'								7,100	6,400	5,700	4,900	4,900
130'								6,400	5,500	5,100	4,000	4,000
140'									4,200	3,700	2,600	2,600
145'									3,700	3,100	2,200	2,200

A : Boom length in feet
B : Load radius in feet

GR-1600XL RATED LIFTING CAPACITIES(IN POUNDS)

ON OUTRIGGERS MID EXTENDED 18' 1/2" (5.50m) SPREAD												
COUNTERWEIGHT 40,100lbs (18,200kg)												
360° ROTATION												
B \ A	42.8' (13.1m)	57.2' (17.4m)	71.6' (21.8m)	86.1' (26.2m)	100.5' (30.6m)	114.9' (35.0m)	129.3' (39.4m)	143.7' (43.8m)	158.1' (48.2m)	172.5' (52.6m)	187.0' (57.0m)	200.1' (61.0m)
8'	247,100	200,000	174,200									
10'	213,600	200,000	174,200									
12'	187,000	186,700	174,200	145,500								
15'	156,300	157,200	157,600	145,500	111,800							
20'	120,600	121,500	121,900	121,300	106,300	84,700						
25'	84,700	86,400	87,100	89,900	88,800	77,600	66,400					
30'	60,200	65,000	67,700	68,300	67,700	66,400	61,100	52,700				
35'	44,800	49,600	52,000	52,500	52,000	52,700	52,200	48,900	41,700	33,100		
45'		31,500	34,000	35,700	33,700	35,300	34,000	35,100	33,700	32,800	26,500	22,900
50'			28,000	30,000	30,200	30,600	28,200	30,000	29,500	28,900	26,500	22,900
60'			20,100	21,800	22,000	22,500	22,300	22,000	21,400	20,700	19,800	19,800
65'				18,700	19,000	19,400	19,400	19,200	18,300	17,900	16,800	16,800
75'				14,100	14,300	14,800	14,600	14,600	13,700	13,200	12,100	12,100
80'					12,600	13,000	12,800	12,600	11,900	11,200	10,400	10,400
90'					9,700	10,100	9,900	9,700	8,800	8,400	7,500	7,500
95'						8,800	8,600	8,400	7,700	7,100	6,200	6,200
105'						6,800	6,600	6,400	5,700	5,100	4,200	4,200
110'							5,700	5,500	4,900	4,200	3,300	3,300
120'							4,200	4,000	3,300	2,600		
125'								3,300	2,600			
130'								2,900				

A :Boom length in feet

B :Load radius in feet

GR-1600XL RATED LIFTING CAPACITIES(IN POUNDS)

ON OUTRIGGERS FULLY EXTENDED 26' 10-7/8" (8.20m) SPREAD												
COUNTERWEIGHT 64,600lbs (29,300kg)												
360° ROTATION												
A \ B	42.8' (13.1m)	57.2' (17.4m)	71.6' (21.8m)	86.1' (26.2m)	100.5' (30.6m)	114.9' (35.0m)	129.3' (39.4m)	143.7' (43.8m)	158.1' (48.2m)	172.5' (52.6m)	187.0' (57.0m)	200.1' (61.0m)
8'	**320,000	200,000	174,200									
10'	241,800	200,000	174,200									
12'	218,000	200,000	174,200	145,500								
15'	187,100	182,800	174,200	145,500	111,800							
20'	148,300	148,800	145,500	138,700	106,300	84,700						
25'	121,500	122,400	122,800	120,800	106,300	77,600	66,400					
30'	101,000	102,500	102,700	102,100	97,700	77,600	61,100	52,700				
35'	48,700	85,100	85,300	84,700	86,200	74,700	54,900	48,900	41,700	33,100		
45'		64,200	62,400	64,200	63,300	63,500	46,700	43,000	37,700	33,100	26,500	22,900
50'			54,700	56,200	55,600	57,100	43,900	39,200	35,500	32,000	26,500	22,900
60'			45,400	44,300	46,100	45,200	38,800	33,500	31,100	28,400	26,000	22,900
65'				41,000	41,400	40,300	36,600	31,100	28,900	26,900	24,700	22,700
75'				32,600	33,500	32,600	33,100	27,100	24,900	24,000	22,300	20,500
80'					30,200	29,500	30,400	25,400	23,600	22,500	21,200	19,600
90'					23,600	26,000	24,700	22,500	21,200	19,800	19,200	17,600
95'						23,800	22,500	21,400	20,100	18,700	18,100	16,500
105'						18,500	18,700	19,000	18,100	17,000	16,300	14,800
110'							17,200	17,900	16,800	16,300	15,700	14,100
120'							12,800	15,200	14,100	15,000	13,900	12,600
125'								14,100	13,400	13,700	12,800	11,900
130'								13,000	12,800	12,600	11,700	11,200
140'									11,500	10,800	9,700	9,700
145'									10,600	9,900	9,000	9,000
155'										8,400	7,500	7,500
160'										7,900	6,800	6,600
170'											5,500	5,500
175'											4,900	4,900
180'												4,400
185'												3,700

**Over front with special equipment

- A :Boom length in feet
- B :Load radius in feet

GR-1600XL RATED LIFTING CAPACITIES(IN POUNDS)

ON OUTRIGGERS FULLY EXTENDED 23' 11-3/8" (7.30m) SPREAD												
COUNTERWEIGHT 64,600lbs (29,300kg)												
360° ROTATION												
B \ A	42.8' (13.1m)	57.2' (17.4m)	71.6' (21.8m)	86.1' (26.2m)	100.5' (30.6m)	114.9' (35.0m)	129.3' (39.4m)	143.7' (43.8m)	158.1' (48.2m)	172.5' (52.6m)	187.0' (57.0m)	200.1' (61.0m)
8'	270,900	200,000	174,200									
10'	239,200	200,000	174,200									
12'	212,300	200,000	174,200	145,500								
15'	180,600	180,600	174,200	145,500	111,800							
20'	142,200	143,100	143,500	138,700	106,300	84,700						
25'	116,000	116,800	117,300	116,600	106,300	77,600	66,400					
30'	96,800	97,900	98,100	97,700	97,700	77,600	61,100	52,700				
35'	48,700	83,300	83,600	84,200	84,400	74,700	54,900	48,900	41,700	33,100		
45'		60,800	58,400	60,800	60,000	61,900	46,700	43,000	37,700	33,100	26,500	22,900
50'			53,100	50,900	53,400	52,000	43,900	39,200	35,500	32,000	26,500	22,900
60'			39,200	39,900	39,500	38,100	38,800	33,500	31,100	28,400	26,000	22,900
65'				34,800	34,400	34,400	34,600	31,100	28,900	26,900	24,700	22,700
75'				27,300	26,900	28,200	26,900	26,000	24,900	24,000	22,300	20,500
80'					24,000	25,100	24,000	23,800	23,600	22,500	21,200	19,600
90'					19,200	20,500	19,400	20,100	19,000	19,600	19,000	17,600
95'						18,500	17,400	18,100	17,900	17,900	17,000	16,500
105'						15,900	14,100	15,400	15,200	14,600	13,700	13,700
110'							13,200	14,600	13,900	13,200	12,300	12,300
120'							12,100	12,100	11,500	10,800	9,900	9,900
125'								11,200	10,400	9,900	8,800	8,800
130'								10,400	9,500	9,000	7,900	7,900
140'									7,900	7,300	6,400	6,400
145'									7,300	6,600	5,500	5,500
155'										5,300	4,400	4,400
160'										4,900	3,700	3,700
170'											2,900	2,600
175'											2,400	2,200

A :Boom length in feet
B :Load radius in feet

GR-1600XL RATED LIFTING CAPACITIES(IN POUNDS)

ON OUTRIGGERS MID EXTENDED 18' 1/2" (5.50m) SPREAD												
COUNTERWEIGHT 64,600lbs (29,300kg)												
360° ROTATION												
B \ A	42.8' (13.1m)	57.2' (17.4m)	71.6' (21.8m)	86.1' (26.2m)	100.5' (30.6m)	114.9' (35.0m)	129.3' (39.4m)	143.7' (43.8m)	158.1' (48.2m)	172.5' (52.6m)	187.0' (57.0m)	200.1' (61.0m)
8'	255,100	200,000	174,200									
10'	221,100	200,000	174,200									
12'	194,400	194,200	174,200	145,500								
15'	163,100	164,000	164,200	145,500	111,800							
20'	126,800	127,600	127,900	127,400	106,300	84,700						
25'	102,300	103,200	103,400	103,600	104,300	77,600	66,400					
30'	79,600	81,400	81,800	84,400	83,300	77,600	61,100	52,700				
35'	48,700	65,300	67,700	66,100	67,700	66,400	54,900	48,900	41,700	33,100		
45'		42,800	45,000	45,600	45,200	44,800	45,400	43,000	37,700	33,100	26,500	22,900
50'			37,900	38,400	37,900	39,500	38,100	37,300	35,500	32,000	26,500	22,900
60'			28,000	29,800	28,000	29,300	28,000	29,100	27,800	27,100	26,000	22,900
65'				26,000	24,300	25,600	24,500	25,400	25,100	25,100	24,000	22,700
75'				20,500	20,700	20,900	19,400	20,700	19,800	19,400	18,300	18,300
80'					18,300	18,700	18,300	18,300	17,600	17,000	16,100	16,100
90'					14,800	15,000	15,000	14,800	13,900	13,400	12,300	12,600
95'						13,700	13,400	13,200	12,300	11,900	11,000	11,000
105'						11,200	10,800	10,600	9,900	9,300	8,400	8,400
110'							9,700	9,500	8,800	8,200	7,300	7,300
120'							7,900	7,700	7,100	6,400	5,500	5,500
125'								6,800	6,200	5,500	4,600	4,600
130'								6,200	5,500	4,900	4,000	4,000
140'									4,200	3,500	2,600	2,600
145'									3,500	3,100		

A : Boom length in feet
B : Load radius in feet

GR-1600XL RATED LIFTING CAPACITIES(IN POUNDS)

ON OUTRIGGERS FULLY EXTENDED 26'10-7/8" (8.20m) SPREAD COUNTERWEIGHT 40,100lbs (18,200kg) 360° ROTATION

C	200.1'(61.0m) Boom + 33.8'(10.3m) Hydraulic offset jib						C	187.0'(57.0m) Boom + 33.8'(10.3m) Hydraulic offset jib					
	5° Tilt		20° Tilt		40° Tilt			5° Tilt		20° Tilt		40° Tilt	
	R	W	R	W	R	W		R	W	R	W	R	W
81.5	48.2'	12,100	57.1'	12,100	66.9'	11,200	81.5	42.3'	13,700	51.5'	13,700	61.4'	12,800
81	51.2'	12,100	61.0'	12,100	69.2'	11,000	81	45.0'	13,700	54.1'	13,700	63.3'	12,600
80	56.4'	12,100	65.3'	11,900	74.2'	10,800	80	49.9'	13,700	58.7'	13,400	67.6'	12,100
79	61.7'	12,100	69.6'	11,500	78.7'	10,400	79	54.8'	13,700	63.3'	13,000	71.9'	11,900
78	67.3'	12,100	74.2'	11,000	82.7'	10,100	78	59.7'	13,700	67.6'	12,600	75.5'	11,500
77	71.9'	11,900	80.1'	10,800	86.9'	9,900	77	64.3'	13,700	71.9'	12,300	79.7'	11,200
76	76.4'	11,500	83.0'	10,400	91.2'	9,700	76	68.2'	13,200	76.1'	11,900	83.3'	10,800
75	80.4'	11,000	87.6'	10,100	94.8'	9,300	75	72.5'	12,800	79.7'	11,500	87.3'	10,600
73	90.0'	10,600	96.1'	9,700	103.0'	8,800	73	80.7'	11,900	87.9'	10,800	94.8'	10,100
70	102.0'	9,500	108.0'	8,800	114.0'	8,400	70	92.5'	11,000	99.4'	10,100	105.0'	9,500
68	110.0'	9,000	116.0'	8,400	121.0'	7,900	68	100.0'	10,400	106.0'	9,500	112.0'	9,000
65	122.0'	8,400	127.0'	7,900	132.0'	7,500	65	111.0'	9,500	117.0'	8,800	122.0'	8,400
63	129.0'	7,900	134.0'	7,500	138.0'	7,300	63	118.0'	9,300	124.0'	8,600	128.0'	8,200
60	138.0'	7,100	144.0'	6,600	147.0'	6,200	60	128.0'	8,600	133.0'	8,200	137.0'	7,700
58	144.0'	6,000	149.0'	5,700	152.0'	5,300	58	134.0'	7,700	139.0'	7,300	142.0'	6,800
55	152.0'	4,600	157.0'	4,400	160.0'	4,200	55	142.0'	6,400	147.0'	6,000	150.0'	5,700
53	157.0'	4,000	162.0'	3,700	165.0'	3,500	53	147.0'	5,500	152.0'	5,300	154.0'	4,900
50	165.0'	2,900	170.0'	2,900	172.0'	2,600	50	155.0'	4,400	159.0'	4,200	161.0'	4,000
48	170.0'	2,400	174.0'	2,200	176.0'	2,200	48	160.0'	4,000	163.0'	3,500	165.0'	3,500
45							45	167.0'	3,100	170.0'	2,900	171.0'	2,600
43							43	171.0'	2,400	174.0'	2,200		
40							40	177.0'	1,800				

ON OUTRIGGERS FULLY EXTENDED 26'10-7/8" (8.20m) SPREAD COUNTERWEIGHT 40,100lbs (18,200kg) 360° ROTATION

C	172.5'(52.6m) Boom + 33.8'(10.3m) Hydraulic offset jib						C	114.9'(35.0m) Boom + 33.8'(10.3m) Hydraulic offset jib					
	5° Tilt		20° Tilt		40° Tilt			5° Tilt		20° Tilt		40° Tilt	
	R	W	R	W	R	W		R	W	R	W	R	W
81.5	37.1'	15,900	46.9'	15,900	57.1'	15,000	81.5			29.2'	23,400	37.1'	16,100
81	39.4'	15,900	49.2'	15,900	59.1'	14,800	81			30.5'	23,100	38.4'	15,900
80	44.0'	15,900	53.5'	15,900	63.0'	14,300	80			33.1'	22,500	41.0'	15,700
79	48.6'	15,900	57.7'	15,400	66.6'	13,900	79			35.8'	22,000	43.3'	15,400
78	52.8'	15,900	61.7'	15,000	70.2'	13,400	78			39.0'	21,400	45.9'	15,200
77	57.4'	15,900	65.3'	14,600	73.8'	13,000	77			41.3'	20,900	48.6'	15,200
76	61.7'	15,900	69.2'	14,100	77.4'	12,800	76			43.6'	20,500	50.9'	15,000
75	64.3'	15,200	73.2'	13,700	80.7'	12,300	75	38.7'	28,200	46.3'	20,100	53.2'	14,800
73	72.2'	14,300	80.1'	12,800	87.6'	11,900	73	44.0'	26,900	51.2'	19,200	57.7'	14,300
70	84.3'	13,000	90.6'	11,900	97.1'	11,000	70	51.2'	24,900	58.7'	18,100	64.6'	13,900
68	91.5'	12,300	97.8'	11,500	104.0'	10,600	68	56.4'	23,800	63.3'	17,400	68.9'	13,700
65	102.0'	11,500	107.0'	10,600	113.0'	9,900	65	63.3'	22,300	70.2'	16,800	75.1'	13,400
63	109.0'	11,000	114.0'	10,100	118.0'	9,700	63	67.9'	21,200	74.8'	16,300	79.4'	13,200
60	118.0'	10,100	123.0'	9,700	127.0'	9,300	60	74.8'	19,800	81.4'	15,700	85.3'	13,000
58	123.0'	9,300	128.0'	8,600	132.0'	8,200	58	79.1'	19,200	85.3'	15,200	89.2'	12,800
55	131.0'	7,700	136.0'	7,300	139.0'	6,800	55	85.3'	18,100	91.5'	14,800	94.8'	12,600
53	136.0'	6,800	141.0'	6,400	143.0'	6,000	53	89.2'	17,400	95.1'	14,300	98.1'	12,600
50	143.0'	5,500	147.0'	5,300	150.0'	5,100	50	95.1'	16,800	101.0'	14,100	103.0'	12,600
48	148.0'	4,900	152.0'	4,600	154.0'	4,400	48	98.8'	15,900	104.0'	13,900	106.0'	12,300
45	154.0'	4,000	158.0'	3,700	159.0'	3,500	45	104.0'	14,100	109.0'	13,400	111.0'	12,300
43	158.0'	3,300	162.0'	3,100			43	107.0'	13,200	112.0'	12,600		
40	164.0'	2,600	167.0'	2,400			40	112.0'	12,100	116.0'	11,500		
38	168.0'	2,200	171.0'	2,000			38	115.0'	11,200	119.0'	10,800		
35							35	119.0'	10,400	123.0'	10,100		
33							33	122.0'	9,900	125.0'	9,500		
30							30	125.0'	9,300	128.0'	9,000		
28							28	128.0'	8,800	130.0'	8,600		
25							25	131.0'	8,400	133.0'	8,200		
23							23	132.0'	7,900				
20							20	135.0'	7,500				

C :Loaded boom angle (°)
R :Load radius in feet
W :Rated lifting capacity in pounds

GR-1600XL RATED LIFTING CAPACITIES(IN POUNDS)

ON OUTRIGGERS FULLY EXTENDED 26'10-7/8" (8.20m) SPREAD
COUNTERWEIGHT 40,100lbs (18,200kg)
360° ROTATION

C	200.1'(61.0m) Boom + 59.1'(18.0m) Hydraulic offset jib						C	187.0'(57.0m) Boom + 59.1'(18.0m) Hydraulic offset jib					
	5° Tilt		20° Tilt		40° Tilt			5° Tilt		20° Tilt		40° Tilt	
	R	W	R	W	R	W		R	W	R	W	R	W
81.5	56.1'	8,200	72.2'	8,200	88.9'	7,100	81.5	47.9'	8,800	65.6'	8,800	81.0'	7,300
81	59.1'	8,200	74.5'	8,200	91.9'	7,100	81	49.2'	8,800	68.2'	8,800	83.7'	7,300
80	65.3'	8,200	81.0'	8,200	97.1'	6,800	80	56.4'	8,800	73.8'	8,800	88.6'	7,100
79	70.9'	8,200	86.3'	8,200	102.0'	6,800	79	61.7'	8,800	78.1'	8,600	92.9'	7,100
78	76.8'	8,200	91.5'	7,900	107.0'	6,600	78	66.6'	8,800	83.3'	8,400	97.4'	7,100
77	82.0'	8,200	96.1'	7,700	112.0'	6,600	77	71.9'	8,800	87.6'	8,200	102.0'	6,800
76	87.9'	8,200	101.0'	7,500	116.0'	6,600	76	77.1'	8,800	92.5'	7,900	106.0'	6,800
75	93.5'	8,200	106.0'	7,300	119.0'	6,400	75	82.0'	8,800	97.1'	7,900	110.0'	6,600
73	103.0'	7,700	115.0'	6,800	129.0'	6,200	73	92.2'	8,800	106.0'	7,700	118.0'	6,600
70	117.0'	7,100	128.0'	6,400	140.0'	5,700	70	106.0'	8,200	119.0'	7,300	129.0'	6,400
68	126.0'	6,800	135.0'	6,000	147.0'	5,500	68	114.0'	7,700	127.0'	7,100	137.0'	6,200
65	138.0'	6,200	149.0'	5,700	158.0'	5,300	65	126.0'	7,300	138.0'	6,600	147.0'	6,200
63	147.0'	6,000	156.0'	5,500	164.0'	5,100	63	135.0'	7,100	146.0'	6,400	154.0'	6,000
60	156.0'	4,900	164.0'	4,200	172.0'	3,700	60	146.0'	6,400	155.0'	5,700	162.0'	5,300
58	162.0'	4,000	170.0'	3,500	177.0'	3,100	58	152.0'	5,500	161.0'	4,900	167.0'	4,400
55	171.0'	2,900	178.0'	2,400	185.0'	2,200	55	160.0'	4,400	169.0'	4,000	175.0'	3,500
53	177.0'	2,200	184.0'	2,000	190.0'	1,800	53	165.0'	3,500	175.0'	3,300	179.0'	2,900
50							50	174.0'	2,600	182.0'	2,400	185.0'	2,200
48							48	179.0'	2,200	187.0'	2,000		

ON OUTRIGGERS FULLY EXTENDED 26'10-7/8" (8.20m) SPREAD
COUNTERWEIGHT 40,100lbs (18,200kg)
360° ROTATION

C	172.5'(52.6m) Boom + 59.1'(18.0m) Hydraulic offset jib						C	114.9'(35.0m) Boom + 59.1'(18.0m) Hydraulic offset jib					
	5° Tilt		20° Tilt		40° Tilt			5° Tilt		20° Tilt		40° Tilt	
	R	W	R	W	R	W		R	W	R	W	R	W
81.5	45.0'	10,400	61.7'	9,700	76.1'	7,500	81.5	30.2'	14,100	44.6'	11,900	58.7'	8,200
81	47.6'	10,400	64.3'	9,700	78.4'	7,500	81	31.5'	14,100	45.9'	11,700	60.4'	8,200
80	52.8'	10,400	69.2'	9,500	82.7'	7,500	80	35.1'	14,100	49.2'	11,500	63.3'	7,900
79	57.7'	10,400	73.5'	9,300	86.6'	7,300	79	38.4'	14,100	52.5'	11,200	65.9'	7,900
78	63.0'	10,400	78.1'	9,000	90.9'	7,300	78	41.7'	14,100	55.5'	11,000	68.6'	7,900
77	67.3'	10,400	82.0'	8,800	94.8'	7,300	77	44.6'	14,100	58.4'	10,600	71.2'	7,700
76	72.2'	10,400	86.3'	8,600	98.1'	7,100	76	47.9'	14,100	61.0'	10,400	73.8'	7,700
75	76.8'	10,400	90.9'	8,600	102.0'	7,100	75	51.2'	14,100	64.0'	10,100	76.4'	7,700
73	86.6'	10,100	98.8'	8,200	110.0'	6,800	73	57.1'	13,200	70.2'	9,900	81.7'	7,500
70	98.4'	9,500	111.0'	7,700	120.0'	6,600	70	65.9'	12,300	78.1'	9,300	88.9'	7,300
68	114.0'	9,300	118.0'	7,500	127.0'	6,600	68	71.5'	11,700	83.7'	9,000	93.5'	7,100
65	119.0'	8,800	129.0'	7,300	136.0'	6,400	65	80.1'	11,000	91.5'	8,600	100.0'	7,100
63	126.0'	8,400	135.0'	7,100	143.0'	6,400	63	85.3'	10,600	96.5'	8,400	105.0'	7,100
60	136.0'	7,700	146.0'	6,800	152.0'	6,200	60	93.2'	10,100	104.0'	7,900	112.0'	6,800
58	142.0'	6,800	151.0'	6,000	156.0'	5,500	58	98.1'	9,700	109.0'	7,900	116.0'	6,800
55	151.0'	5,500	159.0'	4,900	163.0'	4,400	55	105.0'	9,300	115.0'	7,500	122.0'	6,600
53	189.0'	4,900	164.0'	4,200	168.0'	3,700	53	110.0'	9,000	120.0'	7,500	125.0'	6,600
50	164.0'	3,700	172.0'	3,300	174.0'	2,900	50	117.0'	8,600	126.0'	7,300	130.0'	6,600
48	170.0'	3,100	177.0'	2,900	178.0'	2,400	48	121.0'	8,400	130.0'	7,300	134.0'	6,600
45	177.0'	2,400	183.0'	2,000	184.0'	1,800	45	127.0'	8,200	135.0'	7,100	138.0'	6,600
43	182.0'	1,800					43	131.0'	7,900	138.0'	7,100		
40							40	136.0'	7,700	143.0'	6,800		
38							38	143.0'	7,500	146.0'	6,800		
35							35	145.0'	7,300	150.0'	6,800		
33							33	148.0'	7,300	153.0'	6,800		
30							30	152.0'	6,800	156.0'	6,600		
28							28	155.0'	6,600	157.0'	6,200		
25							25	158.0'	6,200	160.0'	6,000		
23							23	160.0'	6,000				
20							20	162.0'	5,500				

C : Loaded boom angle (°)
R : Load radius in feet
W : Rated lifting capacity in pounds

GR-1600XL RATED LIFTING CAPACITIES(IN POUNDS)

ON OUTRIGGERS MID EXTENDED 23'11-3/8" (7.30m) SPREAD													
COUNTERWEIGHT 40,100lbs (18,200kg)													
360° ROTATION													
C	200.1'(61.0m) Boom + 33.8'(10.3m) Hydraulic offset jib						C	187.0'(57.0m) Boom + 33.8'(10.3m) Hydraulic offset jib					
	5° Tilt		20° Tilt		40° Tilt			5° Tilt		20° Tilt		40° Tilt	
	R	W	R	W	R	W		R	W	R	W	R	W
81.5	48.2'	12,100	57.1'	12,100	66.9'	11,200	81.5	42.3'	13,700	51.5'	13,700	61.4'	12,800
81	51.2'	12,100	61.0'	12,100	69.2'	11,000	81	45.0'	13,700	54.1'	13,700	63.3'	12,600
80	56.4'	12,100	65.3'	11,900	74.2'	10,800	80	49.9'	13,700	58.7'	13,400	67.6'	12,100
79	61.7'	12,100	69.6'	11,500	78.7'	10,400	79	54.8'	13,700	63.3'	13,000	71.9'	11,900
78	67.3'	12,100	74.2'	11,000	82.7'	10,100	78	59.7'	13,700	67.6'	12,600	75.5'	11,500
77	71.9'	11,900	80.1'	10,800	86.9'	9,900	77	64.3'	13,700	71.9'	12,300	79.7'	11,200
76	76.4'	11,500	83.0'	10,400	91.2'	9,700	76	68.2'	13,200	76.1'	11,900	83.3'	10,800
75	80.4'	11,000	87.6'	10,100	94.8'	9,300	75	72.5'	12,800	79.7'	11,500	87.3'	10,600
73	90.0'	10,600	96.1'	9,700	103.0'	8,800	73	80.7'	11,900	87.9'	10,800	94.8'	10,100
70	102.0'	9,500	108.0'	8,800	114.0'	8,400	70	92.5'	11,000	99.4'	10,100	105.0'	9,500
68	110.0'	9,000	116.0'	8,200	121.0'	7,500	68	100.0'	10,400	106.0'	9,500	112.0'	9,000
65	118.0'	6,600	125.0'	6,200	129.0'	5,700	65	110.0'	8,600	116.0'	7,900	120.0'	7,300
63	124.0'	5,500	131.0'	5,100	135.0'	4,600	63	116.0'	7,300	121.0'	6,600	125.0'	6,200
60	133.0'	4,000	139.0'	3,500	143.0'	3,300	60	124.0'	5,500	130.0'	5,100	133.0'	4,600
58	139.0'	3,100	145.0'	2,900	149.0'	2,600	58	130.0'	4,400	135.0'	4,200	138.0'	4,000
55	148.0'	2,000	153.0'	1,800			55	138.0'	3,300	143.0'	3,100	146.0'	2,900
53							53	144.0'	2,600	148.0'	2,400	151.0'	2,200
50							50	152.0'	1,800				

ON OUTRIGGERS MID EXTENDED 23'11-3/8" (7.30m) SPREAD													
COUNTERWEIGHT 40,100lbs (18,200kg)													
360° ROTATION													
C	172.5'(52.6m) Boom + 33.8'(10.3m) Hydraulic offset jib						C	114.9'(35.0m) Boom + 33.8'(10.3m) Hydraulic offset jib					
	5° Tilt		20° Tilt		40° Tilt			5° Tilt		20° Tilt		40° Tilt	
	R	W	R	W	R	W		R	W	R	W	R	W
81.5	37.1'	15,900	46.9'	15,900	57.1'	15,000	81.5			29.2'	23,400	37.1'	16,100
81	39.4'	15,900	49.2'	15,900	59.1'	14,800	81			30.5'	23,100	38.4'	15,900
80	44.0'	15,900	53.5'	15,900	63.0'	14,300	80			33.1'	22,500	41.0'	15,700
79	48.6'	15,900	57.7'	15,400	66.6'	13,900	79			35.8'	22,000	43.3'	15,400
78	52.8'	15,900	61.7'	15,000	70.2'	13,400	78			39.0'	21,400	45.9'	15,200
77	57.4'	15,900	65.3'	14,600	73.8'	13,000	77			41.3'	20,900	48.6'	15,200
76	61.7'	15,900	69.2'	14,100	77.4'	12,800	76			43.6'	20,500	50.9'	15,000
75	64.3'	15,200	73.2'	13,700	80.7'	12,300	75	38.7'	28,200	46.3'	20,100	53.2'	14,800
73	72.2'	14,300	80.1'	12,800	87.6'	11,900	73	44.0'	26,900	51.2'	19,200	57.7'	14,300
70	84.3'	13,000	90.6'	11,900	97.1'	11,000	70	51.2'	24,900	58.7'	18,100	64.6'	13,900
68	91.5'	12,300	97.8'	11,500	104.0'	10,600	68	56.4'	23,800	63.3'	17,400	68.9'	13,700
65	100.0'	10,400	107.0'	9,500	112.0'	8,600	65	63.3'	22,300	70.2'	16,800	75.1'	13,400
63	106.0'	8,800	112.0'	7,900	117.0'	7,500	63	67.9'	21,200	74.8'	16,300	79.4'	13,200
60	115.0'	6,800	120.0'	6,200	124.0'	5,700	60	74.8'	19,800	81.4'	15,700	85.3'	13,000
58	120.0'	5,700	125.0'	5,300	129.0'	4,900	58	79.1'	18,500	85.3'	15,200	89.2'	12,800
55	128.0'	4,400	133.0'	4,000	136.0'	3,700	55	85.0'	15,900	91.5'	14,800	94.8'	12,600
53	133.0'	3,500	137.0'	3,300	141.0'	3,100	53	88.9'	14,600	95.5'	13,400	98.1'	12,600
50	140.0'	2,400	144.0'	2,200	147.0'	2,200	50	94.5'	12,600	101.0'	11,700	103.0'	11,200
48	145.0'	2,000	149.0'	1,800			48	98.1'	11,500	104.0'	10,800	106.0'	10,400
45							45	103.0'	10,100	109.0'	9,500	111.0'	9,300
43							43	106.0'	9,300	112.0'	8,800		
40							40	111.0'	8,400	116.0'	7,900		
38							38	114.0'	7,700	118.0'	7,300		
35							35	118.0'	6,800	122.0'	6,600		
33							33	121.0'	6,400	125.0'	6,200		
30							30	125.0'	5,700	128.0'	5,700		
28							28	127.0'	5,500	130.0'	5,300		
25							25	130.0'	5,100	132.0'	4,900		
23							23	132.0'	4,900				
20							20	134.0'	4,400				

C :Loaded boom angle (°)
R :Load radius in feet
W :Rated lifting capacity in pounds

GR-1600XL RATED LIFTING CAPACITIES(IN POUNDS)

ON OUTRIGGERS MID EXTENDED 23'11-3/8" (7.30m) SPREAD COUNTERWEIGHT 40,100lbs (18,200kg) 360° ROTATION

C	200.1'(61.0m) Boom + 59.1'(18.0m) Hydraulic offset jib						C	187.0'(57.0m) Boom + 59.1'(18.0m) Hydraulic offset jib					
	5° Tilt		20° Tilt		40° Tilt			5° Tilt		20° Tilt		40° Tilt	
	R	W	R	W	R	W		R	W	R	W	R	W
81.5	56.1'	8,200	72.2'	8,200	88.9'	7,100	81.5	47.9'	8,800	65.6'	8,800	81.0'	7,300
81	59.1'	8,200	74.5'	8,200	91.9'	7,100	81	49.2'	8,800	68.2'	8,800	83.7'	7,300
80	65.3'	8,200	81.0'	8,200	97.1'	6,800	80	56.4'	8,800	73.8'	8,800	88.6'	7,100
79	70.9'	8,200	86.3'	8,200	102.0'	6,800	79	61.7'	8,800	78.1'	8,600	92.9'	7,100
78	76.8'	8,200	91.5'	7,900	107.0'	6,600	78	66.6'	8,800	83.3'	8,400	97.4'	7,100
77	82.0'	8,200	96.1'	7,700	112.0'	6,600	77	71.9'	8,800	87.6'	8,200	102.0'	6,800
76	87.9'	8,200	101.0'	7,500	116.0'	6,600	76	77.1'	8,800	92.5'	7,900	106.0'	6,800
75	93.5'	8,200	106.0'	7,300	119.0'	6,400	75	82.0'	8,800	97.1'	7,900	110.0'	6,600
73	103.0'	7,700	115.0'	6,800	129.0'	6,200	73	92.2'	8,800	106.0'	7,700	118.0'	6,600
70	117.0'	7,100	128.0'	6,400	140.0'	5,700	70	106.0'	8,200	119.0'	7,300	129.0'	6,400
68	125.0'	6,400	135.0'	5,500	145.0'	4,600	68	114.0'	7,700	126.0'	6,800	135.0'	6,000
65	135.0'	4,600	144.0'	4,000	153.0'	3,300	65	124.0'	6,200	135.0'	5,300	144.0'	4,600
63	141.0'	3,500	150.0'	3,100	159.0'	2,600	63	131.0'	5,100	141.0'	4,200	150.0'	3,700
60	151.0'	2,400	159.0'	2,000			60	140.0'	3,500	150.0'	3,100	158.0'	2,600
58							58	146.0'	2,900	156.0'	2,400	163.0'	2,000
55							55	155.0'	1,800				

ON OUTRIGGERS MID EXTENDED 23'11-3/8" (7.30m) SPREAD COUNTERWEIGHT 40,100lbs (18,200kg) 360° ROTATION

C	172.5'(52.6m) Boom + 59.1'(18.0m) Hydraulic offset jib						C	114.9'(35.0m) Boom + 59.1'(18.0m) Hydraulic offset jib					
	5° Tilt		20° Tilt		40° Tilt			5° Tilt		20° Tilt		40° Tilt	
	R	W	R	W	R	W		R	W	R	W	R	W
81.5	45.0'	10,400	61.7'	9,700	76.1'	7,500	81.5	30.2'	14,100	44.6'	11,900	58.7'	8,200
81	47.6'	10,400	64.3'	9,700	78.4'	7,500	81	31.5'	14,100	45.9'	11,700	60.4'	8,200
80	52.8'	10,400	69.2'	9,500	82.7'	7,500	80	35.1'	14,100	49.2'	11,500	63.3'	7,900
79	57.7'	10,400	73.5'	9,300	86.6'	7,300	79	38.4'	14,100	52.5'	11,200	65.9'	7,900
78	63.0'	10,400	78.1'	9,000	90.9'	7,300	78	41.7'	14,100	55.5'	11,000	68.6'	7,900
77	67.3'	10,400	82.0'	8,800	94.8'	7,300	77	44.6'	14,100	58.4'	10,600	71.2'	7,700
76	72.2'	10,400	86.3'	8,600	98.1'	7,100	76	47.9'	14,100	61.0'	10,400	73.8'	7,700
75	76.8'	10,400	90.9'	8,600	102.0'	7,100	75	51.2'	14,100	64.0'	10,100	76.4'	7,700
73	86.6'	10,100	98.8'	8,200	110.0'	6,800	73	57.1'	13,200	70.2'	9,900	81.7'	7,500
70	98.4'	9,500	111.0'	7,700	120.0'	6,600	70	65.9'	12,300	78.1'	9,300	88.9'	7,300
68	114.0'	9,300	118.0'	7,500	127.0'	6,600	68	71.5'	11,700	83.7'	9,000	93.5'	7,100
65	116.0'	7,500	128.0'	6,400	135.0'	5,500	65	80.1'	11,000	91.5'	8,600	100.0'	7,100
63	123.0'	6,200	134.0'	5,300	141.0'	4,600	63	85.3'	10,600	96.5'	8,400	105.0'	7,100
60	132.0'	4,600	142.0'	4,000	148.0'	3,500	60	93.2'	10,100	104.0'	7,900	112.0'	6,800
58	138.0'	3,700	148.0'	3,300	154.0'	2,900	58	98.1'	9,700	109.0'	7,900	116.0'	6,800
55	147.0'	2,600	156.0'	2,200	161.0'	2,000	55	105.0'	9,300	115.0'	7,500	122.0'	6,600
53	153.0'	2,000					53	110.0'	9,000	120.0'	7,500	125.0'	6,600
50							50	117.0'	8,600	126.0'	7,300	130.0'	6,600
48							48	121.0'	8,400	130.0'	7,300	134.0'	6,600
45							45	127.0'	7,500	135.0'	6,800	138.0'	6,400
43							43	131.0'	6,800	138.0'	6,200		
40							40	136.0'	6,000	143.0'	5,500		
38							38	139.0'	5,500	146.0'	5,100		
35							35	144.0'	4,900	150.0'	4,600		
33							33	147.0'	4,400	152.0'	4,200		
30							30	151.0'	4,000	155.0'	3,700		
28							28	154.0'	3,700	157.0'	3,500		
25							25	157.0'	3,300	159.0'	3,300		
23							23	159.0'	3,100				
20							20	162.0'	2,900				

C :Loaded boom angle (°)
R :Load radius in feet
W :Rated lifting capacity in pounds

GR-1600XL RATED LIFTING CAPACITIES(IN POUNDS)

ON OUTRIGGERS MID EXTENDED 18'1/2" (5.50m) SPREAD COUNTERWEIGHT 40,100lbs (18,200kg) 360° ROTATION													
C	200.1'(61.0m) Boom + 33.8'(10.3m) Hydraulic offset jib						C	187.0'(57.0m) Boom + 33.8'(10.3m) Hydraulic offset jib					
	5° Tilt		20° Tilt		40° Tilt			5° Tilt		20° Tilt		40° Tilt	
	R	W	R	W	R	W		R	W	R	W	R	W
81.5	48.2'	12,100	57.1'	12,100	66.9'	11,200	81.5	42.3'	13,700	51.5'	13,700	61.4'	12,800
81	51.2'	12,100	61.0'	12,100	69.2'	11,000	81	45.0'	13,700	54.1'	13,700	63.3'	12,600
80	56.4'	12,100	65.3'	11,900	74.2'	10,800	80	49.9'	13,700	58.7'	13,400	67.6'	12,100
79	61.7'	12,100	69.6'	11,500	78.7'	10,400	79	54.8'	13,700	63.3'	13,000	71.9'	11,900
78	67.3'	12,100	74.2'	11,000	82.7'	10,100	78	59.7'	13,700	67.6'	12,600	75.5'	11,500
77	71.9'	11,900	80.1'	10,800	86.9'	9,900	77	64.3'	13,700	71.9'	12,300	79.7'	11,200
76	76.4'	11,500	83.0'	10,400	91.2'	9,700	76	68.2'	13,200	76.1'	11,900	83.3'	10,800
75	80.4'	11,000	87.3'	9,700	94.2'	8,600	75	72.5'	12,800	79.7'	11,500	87.3'	10,600
73	86.6'	8,600	93.8'	7,700	99.7'	6,800	73	79.7'	10,800	86.6'	9,700	92.5'	8,600
70	96.1'	6,000	103.0'	5,300	109.0'	4,900	70	88.9'	7,700	95.8'	7,100	101.0'	6,400
68	103.0'	4,400	109.0'	4,000	115.0'	3,700	68	95.5'	6,200	102.0'	5,500	107.0'	5,100
65	112.0'	2,600	119.0'	2,400	124.0'	2,200	65	105.0'	4,200	111.0'	3,700	115.0'	3,500
63							63	111.0'	3,100	116.0'	2,900	121.0'	2,600
60							60	120.0'	1,800				

ON OUTRIGGERS MID EXTENDED 18'1/2" (5.50m) SPREAD COUNTERWEIGHT 40,100lbs (18,200kg) 360° ROTATION													
C	172.5'(52.6m) Boom + 33.8'(10.3m) Hydraulic offset jib						C	114.9'(35.0m) Boom + 33.8'(10.3m) Hydraulic offset jib					
	5° Tilt		20° Tilt		40° Tilt			5° Tilt		20° Tilt		40° Tilt	
	R	W	R	W	R	W		R	W	R	W	R	W
81.5	37.1'	15,900	46.9'	15,900	57.1'	15,000	81.5			29.2'	23,400	37.1'	16,100
81	39.4'	15,900	49.2'	15,900	59.1'	14,800	81			30.5'	23,100	38.4'	15,900
80	44.0'	15,900	53.5'	15,900	63.0'	14,300	80			33.1'	22,500	41.0'	15,700
79	48.6'	15,900	57.7'	15,400	66.6'	13,900	79			35.8'	22,000	43.3'	15,400
78	52.8'	15,900	61.7'	15,000	70.2'	13,400	78			39.0'	21,400	45.9'	15,200
77	57.4'	15,900	65.3'	14,600	73.8'	13,000	77			41.3'	20,900	48.6'	15,200
76	61.7'	15,900	69.2'	14,100	77.4'	12,800	76			43.6'	20,500	50.9'	15,000
75	64.3'	15,200	73.2'	13,700	80.7'	12,300	75	38.7'	28,200	46.3'	20,100	53.2'	14,800
73	72.2'	13,200	79.4'	11,500	86.6'	10,400	73	44.0'	26,900	51.2'	19,200	57.7'	14,300
70	81.4'	9,500	88.3'	8,600	94.5'	7,700	70	51.2'	24,900	58.7'	18,100	64.6'	13,900
68	87.6'	7,700	94.2'	6,800	99.7'	6,200	68	56.4'	23,600	63.3'	17,400	68.9'	13,700
65	96.5'	5,500	103.0'	4,900	108.0'	4,400	65	63.0'	19,000	70.2'	16,800	75.1'	13,400
63	102.0'	4,200	108.0'	3,700	113.0'	3,500	63	67.3'	16,500	74.8'	14,800	79.4'	13,200
60	111.0'	2,600	116.0'	2,400	121.0'	2,200	60	73.8'	13,400	81.0'	12,300	85.3'	11,200
58	116.0'	1,800					58	77.8'	11,900	85.0'	10,800	88.9'	10,100
55							55	84.0'	9,900	90.6'	9,300	94.5'	8,600
53							53	87.9'	8,800	94.2'	8,200	97.4'	7,700
50							50	93.5'	7,300	99.4'	6,800	102.0'	6,600
48							48	97.1'	6,600	103.0'	6,200	106.0'	6,000
45							45	102.0'	5,500	108.0'	5,100	110.0'	5,100
43							43	106.0'	4,900	111.0'	4,600		
40							40	110.0'	4,000	115.0'	3,700		
38							38	114.0'	3,500	118.0'	3,300		
35							35	118.0'	2,900	122.0'	2,900		
33							33	120.0'	2,600	124.0'	2,400		
30							30	124.0'	2,200	127.0'	2,000		
28							28	126.0'	2,000	129.0'	1,800		

C : Loaded boom angle (°)
R : Load radius in feet
W : Rated lifting capacity in pounds

GR-1600XL RATED LIFTING CAPACITIES(IN POUNDS)

ON OUTRIGGERS MID EXTENDED 18'1/2" (5.50m) SPREAD COUNTERWEIGHT 40,100lbs (18,200kg) 360° ROTATION

C	200.1'(61.0m) Boom + 59.1'(18.0m) Hydraulic offset jib						C	187.0'(57.0m) Boom + 59.1'(18.0m) Hydraulic offset jib					
	5° Tilt		20° Tilt		40° Tilt			5° Tilt		20° Tilt		40° Tilt	
	R	W	R	W	R	W		R	W	R	W	R	W
81.5	56.1'	8,200	72.2'	8,200	88.9'	7,100	81.5	47.9'	8,800	65.6'	8,800	81.0'	7,300
81	59.1'	8,200	74.5'	8,200	91.9'	7,100	81	49.2'	8,800	68.2'	8,800	83.7'	7,300
80	65.3'	8,200	81.0'	8,200	97.1'	6,800	80	56.4'	8,800	73.8'	8,800	88.6'	7,100
79	70.9'	8,200	86.3'	8,200	102.0'	6,800	79	61.7'	8,800	78.1'	8,600	92.9'	7,100
78	76.8'	8,200	91.5'	7,900	107.0'	6,600	78	66.6'	8,800	83.3'	8,400	97.4'	7,100
77	82.0'	8,200	96.1'	7,700	112.0'	6,600	77	71.9'	8,800	87.6'	8,200	102.0'	6,800
76	87.9'	8,200	101.0'	7,300	114.0'	6,000	76	77.1'	8,800	92.5'	7,900	106.0'	6,800
75	93.2'	7,700	104.0'	6,400	117.0'	5,300	75	82.0'	8,800	97.1'	7,900	110.0'	6,600
73	99.1'	6,000	110.0'	4,900	123.0'	4,000	73	90.6'	7,700	104.0'	6,400	115.0'	5,300
70	109.0'	3,700	120.0'	3,100	132.0'	2,400	70	101.0'	5,300	114.0'	4,400	124.0'	3,500
68	116.0'	2,600					68	108.0'	4,000	120.0'	3,300	130.0'	2,600
65							65	118.0'	2,400	130.0'	2,000		

ON OUTRIGGERS MID EXTENDED 18'1/2" (5.50m) SPREAD COUNTERWEIGHT 40,100lbs (18,200kg) 360° ROTATION

C	172.5'(52.6m) Boom + 59.1'(18.0m) Hydraulic offset jib						C	114.9'(35.0m) Boom + 59.1'(18.0m) Hydraulic offset jib					
	5° Tilt		20° Tilt		40° Tilt			5° Tilt		20° Tilt		40° Tilt	
	R	W	R	W	R	W		R	W	R	W	R	W
81.5	45.0'	10,400	61.7'	9,700	76.1'	7,500	81.5	30.2'	14,100	44.6'	11,900	58.7'	8,200
81	47.6'	10,400	64.3'	9,700	78.4'	7,500	81	31.5'	14,100	45.9'	11,700	60.4'	8,200
80	52.8'	10,400	69.2'	9,500	82.7'	7,500	80	35.1'	14,100	49.2'	11,500	63.3'	7,900
79	57.7'	10,400	73.5'	9,300	86.6'	7,300	79	38.4'	14,100	52.5'	11,200	65.9'	7,900
78	63.0'	10,400	78.1'	9,000	90.9'	7,300	78	41.7'	14,100	55.5'	11,000	68.6'	7,900
77	67.3'	10,400	82.0'	8,800	94.8'	7,300	77	44.6'	14,100	58.4'	10,600	71.2'	7,700
76	72.2'	10,400	86.3'	8,600	98.1'	7,100	76	47.9'	14,100	61.0'	10,400	73.8'	7,700
75	76.8'	10,400	90.9'	8,600	102.0'	7,100	75	51.2'	14,100	64.0'	10,100	76.4'	7,700
73	85.3'	9,500	98.4'	7,700	109.0'	6,400	73	57.1'	13,200	70.2'	9,900	81.7'	7,500
70	94.8'	6,600	107.0'	5,500	117.0'	4,600	70	65.9'	12,300	78.1'	9,300	88.9'	7,300
68	101.0'	5,300	114.0'	4,200	123.0'	3,500	68	71.5'	11,700	83.7'	9,000	93.5'	7,100
65	111.0'	3,300	123.0'	2,900	131.0'	2,200	65	80.1'	11,000	91.5'	8,600	100.0'	7,100
63	117.0'	2,400	128.0'	2,000			63	85.3'	10,600	96.5'	8,400	105.0'	7,100
60							60	93.2'	9,900	104.0'	7,900	112.0'	6,800
58							58	97.8'	8,800	108.0'	7,500	116.0'	6,800
55							55	105.0'	7,300	115.0'	6,400	121.0'	5,700
53							53	109.0'	6,400	118.0'	5,500	125.0'	5,100
50							50	115.0'	5,300	124.0'	4,600	129.0'	4,200
48							48	119.0'	4,600	128.0'	4,000	133.0'	3,700
45							45	125.0'	3,700	134.0'	3,300	137.0'	3,100
43							43	129.0'	3,300	137.0'	2,900		
40							40	135.0'	2,600	142.0'	2,200		
38							38	138.0'	2,200	144.0'	2,000		
35							35	143.0'	1,800				

C :Loaded boom angle (°)
R :Load radius in feet
W :Rated lifting capacity in pounds

GR-1600XL RATED LIFTING CAPACITIES(IN POUNDS)

ON OUTRIGGERS FULLY EXTENDED 26'10-7/8" (8.20m) SPREAD COUNTERWEIGHT 64,600lbs (29,300kg) 360° ROTATION													
C	200.1'(61.0m) Boom + 33.8'(10.3m) Hydraulic offset jib						C	187.0'(57.0m) Boom + 33.8'(10.3m) Hydraulic offset jib					
	5° Tilt		20° Tilt		40° Tilt			5° Tilt		20° Tilt		40° Tilt	
	R	W	R	W	R	W		R	W	R	W	R	W
81.5	48.2'	12,100	57.1'	12,100	66.9'	11,200	81.5	42.3'	13,700	51.5'	13,700	61.4'	12,800
81	51.2'	12,100	61.0'	12,100	69.2'	11,000	81	44.9'	13,700	54.1'	13,700	63.3'	12,600
80	56.4'	12,100	65.3'	11,900	74.1'	10,800	80	49.9'	13,700	58.7'	13,400	67.6'	12,100
79	61.7'	12,100	69.6'	11,500	78.7'	10,400	79	54.8'	13,700	63.3'	13,000	71.9'	11,900
78	67.3'	12,100	74.1'	11,000	82.7'	10,100	78	59.7'	13,700	67.6'	12,600	75.5'	11,500
77	71.9'	11,900	80.1'	10,800	86.9'	9,900	77	64.3'	13,700	71.9'	12,300	79.7'	11,200
76	76.4'	11,500	83.0'	10,400	91.2'	9,700	76	68.2'	13,200	76.1'	11,900	83.3'	10,800
75	80.4'	11,000	87.6'	10,100	94.8'	9,300	75	72.5'	12,800	79.7'	11,500	87.3'	10,600
73	89.6'	10,600	96.1'	9,700	103.0'	8,800	73	80.7'	11,900	87.9'	10,800	94.8'	10,100
70	101.7'	9,500	108.0'	8,800	114.0'	8,400	70	92.5'	11,000	99.4'	10,100	105.0'	9,500
68	109.9'	9,000	116.0'	8,400	121.0'	7,900	68	100.0'	10,400	106.0'	9,500	112.0'	9,000
65	122.0'	8,400	127.0'	7,900	132.0'	7,500	65	111.0'	9,500	117.0'	8,800	122.0'	8,400
63	129.0'	7,900	134.0'	7,500	138.0'	7,300	63	118.0'	9,300	124.0'	8,600	128.0'	8,200
60	139.0'	7,300	144.0'	6,800	148.0'	6,600	60	128.0'	8,600	133.0'	8,200	137.0'	7,700
58	146.0'	6,800	151.0'	6,600	154.0'	6,400	58	135.0'	8,200	139.0'	7,700	143.0'	7,500
55	155.0'	6,200	159.0'	6,000	163.0'	6,000	55	144.0'	7,700	148.0'	7,300	151.0'	7,100
53	161.0'	6,000	165.0'	5,700	168.0'	5,500	53	150.0'	7,300	154.0'	7,100	156.0'	6,800
50	169.0'	5,300	173.0'	5,100	175.0'	4,900	50	158.0'	6,800	161.0'	6,400	164.0'	6,400
48	175.0'	4,900	178.0'	4,600	180.0'	4,600	48	163.0'	6,400	166.0'	6,200	168.0'	6,000
45	182.0'	4,400	185.0'	4,200	186.0'	4,200	45	170.0'	5,700	173.0'	5,500	174.0'	5,500
43	187.0'	4,000	190.0'	4,000			43	174.0'	5,300	177.0'	5,300		
40	193.0'	3,500	195.0'	3,300			40	180.0'	4,900	183.0'	4,600		
38	197.0'	3,100	199.0'	2,900			38	184.0'	4,400	186.0'	4,200		
35	202.0'	2,400	204.0'	2,400			35	190.0'	3,700	191.0'	3,500		
33	206.0'	2,200	207.0'	2,000			33	193.0'	3,500	194.0'	3,300		
30	210.0'	1,800					30	198.0'	2,900	198.0'	2,900		
28							28	200.0'	2,600	201.0'	2,600		
25							25	204.0'	2,400	203.0'	2,200		
23							23	206.0'	2,200				
20							20	208.0'	2,000				

ON OUTRIGGERS FULLY EXTENDED 26'10-7/8" (8.20m) SPREAD COUNTERWEIGHT 64,600lbs (29,300kg) 360° ROTATION													
C	172.5'(52.6m) Boom + 33.8'(10.3m) Hydraulic offset jib						C	114.9'(35.0m) Boom + 33.8'(10.3m) Hydraulic offset jib					
	5° Tilt		20° Tilt		40° Tilt			5° Tilt		20° Tilt		40° Tilt	
	R	W	R	W	R	W		R	W	R	W	R	W
81.5	37.1'	15,900	46.9'	15,900	57.1'	15,000	81.5			29.2'	23,400	37.1'	16,100
81	39.4'	15,900	49.2'	15,900	59.1'	14,800	81			30.5'	23,100	38.4'	15,900
80	44.0'	15,900	53.5'	15,900	63.0'	14,300	80			33.1'	22,500	41.0'	15,700
79	48.6'	15,900	57.7'	15,400	66.6'	13,900	79			35.8'	22,000	43.3'	15,400
78	52.8'	15,900	61.7'	15,000	70.2'	13,400	78			39.0'	21,400	45.9'	15,200
77	57.4'	15,900	65.3'	14,600	73.8'	13,000	77			41.3'	20,900	48.6'	15,200
76	61.7'	15,900	69.2'	14,100	77.4'	12,800	76			43.6'	20,500	50.9'	15,000
75	64.3'	15,200	73.2'	13,700	80.7'	12,300	75	38.7'	28,200	46.3'	20,100	53.1'	14,800
73	72.2'	14,300	80.1'	12,800	87.6'	11,900	73	44.0'	26,900	51.2'	19,200	57.7'	14,300
70	84.3'	13,000	90.6'	11,900	97.1'	11,000	70	51.2'	24,900	58.7'	18,100	64.6'	13,900
68	91.5'	12,300	97.8'	11,500	104.0'	10,600	68	56.4'	23,800	63.3'	17,400	68.9'	13,700
65	102.0'	11,500	107.0'	10,600	113.0'	9,900	65	63.3'	22,300	70.2'	16,800	75.1'	13,400
63	109.0'	11,000	114.0'	10,100	118.0'	9,700	63	67.9'	21,200	74.8'	16,300	79.4'	13,200
60	118.0'	10,100	123.0'	9,700	127.0'	9,300	60	74.8'	19,800	81.4'	15,700	85.3'	13,000
58	124.0'	9,700	129.0'	9,300	133.0'	8,800	58	79.1'	19,200	85.3'	15,200	89.2'	12,800
55	133.0'	9,000	137.0'	8,600	140.0'	8,400	55	85.3'	18,100	91.5'	14,800	94.8'	12,600
53	138.0'	8,600	142.0'	8,400	145.0'	7,900	53	89.2'	17,400	95.1'	14,300	98.1'	12,600
50	146.0'	8,200	149.0'	7,700	151.0'	7,500	50	95.1'	16,800	101.0'	14,100	103.0'	12,600
48	151.0'	7,700	154.0'	7,300	156.0'	7,100	48	99.0'	16,300	104.0'	13,900	106.0'	12,300
45	157.0'	7,100	160.0'	6,600	162.0'	6,600	45	104.0'	15,700	109.0'	13,400	111.0'	12,300
43	162.0'	6,600	164.0'	6,400			43	107.0'	15,400	112.0'	13,400		
40	168.0'	6,000	170.0'	5,700			40	112.0'	15,000	116.0'	13,200		
38	171.0'	5,500	173.0'	5,300			38	115.0'	14,600	119.0'	13,000		
35	176.0'	4,900	178.0'	4,600			35	120.0'	14,300	123.0'	13,000		
33	179.0'	4,400	181.0'	4,200			33	122.0'	14,100	125.0'	12,800		
30	183.0'	3,700	185.0'	3,700			30	126.0'	13,900	129.0'	12,800		
28	186.0'	3,500	187.0'	3,300			28	128.0'	13,200	131.0'	12,800		
25	190.0'	3,100	190.0'	3,100			25	131.0'	12,600	133.0'	12,300		
23	192.0'	2,900					23	133.0'	12,300				
20	194.0'	2,600					20	135.0'	11,900				

C : Loaded boom angle (°)
R : Load radius in feet
W : Rated lifting capacity in pounds

GR-1600XL RATED LIFTING CAPACITIES(IN POUNDS)

ON OUTRIGGERS FULLY EXTENDED 26'10-7/8" (8.20m) SPREAD													
COUNTERWEIGHT 64,600lbs (29,300kg)													
360° ROTATION													
C	200.1'(61.0m) Boom + 59.1'(18.0m) Hydraulic offset jib						C	187.0'(57.0m) Boom + 59.1'(18.0m) Hydraulic offset jib					
	5° Tilt		20° Tilt		40° Tilt			5° Tilt		20° Tilt		40° Tilt	
	R	W	R	W	R	W		R	W	R	W	R	W
81.5	56.1'	8,200	72.2'	8,200	88.9'	7,100	81.5	47.9'	8,800	65.6'	8,800	81.0'	7,300
81	59.1'	8,200	74.5'	8,200	91.9'	7,100	81	49.2'	8,800	68.2'	8,800	83.7'	7,300
80	65.3'	8,200	81.0'	8,200	97.1'	6,800	80	56.4'	8,800	73.8'	8,800	88.6'	7,100
79	70.9'	8,200	86.3'	8,200	102.0'	6,800	79	61.7'	8,800	78.1'	8,600	92.8'	7,100
78	76.8'	8,200	91.5'	7,900	107.0'	6,600	78	66.6'	8,800	83.3'	8,400	97.4'	7,100
77	82.0'	8,200	96.1'	7,700	112.0'	6,600	77	71.9'	8,800	87.6'	8,200	102.0'	6,800
76	87.9'	8,200	101.0'	7,500	116.0'	6,600	76	77.1'	8,800	92.5'	7,900	106.0'	6,800
75	93.5'	8,200	106.0'	7,300	119.0'	6,400	75	82.0'	8,800	97.1'	7,900	110.0'	6,600
73	103.0'	7,700	115.0'	6,800	129.0'	6,200	73	92.2'	8,800	106.0'	7,700	118.0'	6,600
70	117.0'	7,100	128.0'	6,400	140.0'	5,700	70	106.0'	8,200	119.0'	7,300	129.0'	6,400
68	126.0'	6,800	135.0'	6,000	147.0'	5,500	68	114.0'	7,700	127.0'	7,100	137.0'	6,200
65	138.0'	6,200	149.0'	5,700	158.0'	5,300	65	126.0'	7,300	138.0'	6,600	147.0'	6,200
63	147.0'	6,000	156.0'	5,500	165.0'	5,100	63	135.0'	7,100	146.0'	6,400	154.0'	6,000
60	159.0'	5,500	167.0'	5,100	175.0'	4,900	60	146.0'	6,600	156.0'	6,000	163.0'	5,700
58	166.0'	5,100	174.0'	4,900	181.0'	4,600	58	153.0'	6,400	163.0'	5,700	169.0'	5,500
55	176.0'	4,600	183.0'	4,400	189.0'	4,200	55	163.0'	6,000	172.0'	5,500	177.0'	5,300
53	182.0'	4,200	189.0'	4,000	194.0'	3,700	53	169.0'	5,500	177.0'	5,100	182.0'	4,900
50	191.0'	3,700	197.0'	3,500	200.0'	3,300	50	177.0'	4,900	186.0'	4,600	189.0'	4,400
48	197.0'	3,300	201.0'	3,100	205.0'	3,100	48	183.0'	4,600	190.0'	4,200	193.0'	4,200
45	205.0'	2,900	209.0'	2,600	211.0'	2,400	45	191.0'	4,000	198.0'	3,700	199.0'	3,700
43	210.0'	2,600	213.0'	2,400			43	196.0'	3,700	202.0'	3,500		
40	216.0'	2,000	219.0'	1,800			40	202.0'	3,300	207.0'	2,900		
38							38	207.0'	2,900	211.0'	2,600		
35							35	212.0'	2,200	216.0'	2,000		
33							33	216.0'	2,000	219.0'	1,800		

ON OUTRIGGERS FULLY EXTENDED 26'10-7/8" (8.20m) SPREAD													
COUNTERWEIGHT 64,600lbs (29,300kg)													
360° ROTATION													
C	172.5'(52.6m) Boom + 59.1'(18.0m) Hydraulic offset jib						C	114.9'(35.0m) Boom + 59.1'(18.0m) Hydraulic offset jib					
	5° Tilt		20° Tilt		40° Tilt			5° Tilt		20° Tilt		40° Tilt	
	R	W	R	W	R	W		R	W	R	W	R	W
81.5	44.9'	10,400	61.7'	9,700	76.1'	7,500	81.5	30.2'	14,100	44.6'	11,900	58.7'	8,200
81	47.6'	10,400	64.3'	9,700	78.4'	7,500	81	31.5'	14,100	45.9'	11,700	60.4'	8,200
80	52.8'	10,400	69.2'	9,500	82.7'	7,500	80	35.1'	14,100	49.2'	11,500	63.3'	7,900
79	57.7'	10,400	73.5'	9,300	86.6'	7,300	79	38.4'	14,100	52.5'	11,200	65.9'	7,900
78	63.0'	10,400	78.1'	9,000	90.9'	7,300	78	41.7'	14,100	55.4'	11,000	68.6'	7,900
77	67.3'	10,400	82.0'	8,800	94.8'	7,300	77	44.6'	14,100	58.4'	10,600	71.2'	7,700
76	72.2'	10,400	86.3'	8,600	98.1'	7,100	76	47.9'	14,100	61.0'	10,400	73.8'	7,700
75	76.8'	10,400	90.9'	8,600	102.0'	7,100	75	51.2'	14,100	64.0'	10,100	76.4'	7,700
73	86.6'	10,100	98.8'	8,200	110.0'	6,800	73	57.1'	13,200	70.2'	9,900	81.7'	7,500
70	98.0'	9,500	111.0'	7,700	120.0'	6,600	70	65.9'	12,300	78.1'	9,300	88.9'	7,300
68	114.0'	9,300	118.0'	7,500	127.0'	6,600	68	71.5'	11,700	83.7'	9,000	93.5'	7,100
65	119.0'	8,800	129.0'	7,300	136.0'	6,400	65	80.1'	11,000	91.5'	8,600	100.0'	7,100
63	126.0'	8,400	135.0'	7,100	143.0'	6,400	63	85.3'	10,600	96.5'	8,400	105.0'	7,100
60	136.0'	7,900	146.0'	6,800	152.0'	6,200	60	93.2'	10,100	104.0'	7,900	112.0'	6,800
58	143.0'	7,500	153.0'	6,800	157.0'	6,200	58	98.1'	9,700	109.0'	7,900	116.0'	6,800
55	153.0'	7,100	162.0'	6,600	165.0'	6,200	55	105.0'	9,300	115.0'	7,500	122.0'	6,600
53	159.0'	6,600	167.0'	6,200	170.0'	6,000	53	110.0'	9,000	120.0'	7,500	125.0'	6,600
50	167.0'	6,000	174.0'	5,500	176.0'	5,300	50	117.0'	8,600	126.0'	7,300	130.0'	6,600
48	173.0'	5,500	179.0'	5,300	180.0'	5,100	48	121.0'	8,400	130.0'	7,300	134.0'	6,600
45	180.0'	5,100	186.0'	4,900	186.0'	4,600	45	127.0'	8,200	135.0'	7,100	138.0'	6,600
43	185.0'	4,900	190.0'	4,400			43	131.0'	7,900	138.0'	7,100		
40	191.0'	4,200	195.0'	3,700			40	136.0'	7,700	143.0'	6,800		
38	196.0'	3,700	199.0'	3,300			38	143.0'	7,500	146.0'	6,800		
35	201.0'	3,100	204.0'	2,900			35	145.0'	7,300	150.0'	6,800		
33	205.0'	2,900	207.0'	2,600			33	148.0'	7,300	153.0'	6,800		
30	210.0'	2,400	211.0'	2,200			30	152.0'	7,100	156.0'	6,800		
28	213.0'	2,200	213.0'	2,000			28	155.0'	7,100	158.0'	6,800		
25	217.0'	1,800					25	158.0'	6,800	160.0'	6,800		
23							23	160.0'	6,800				
20							20	163.0'	6,800				

C :Loaded boom angle (°)
R :Load radius in feet
W :Rated lifting capacity in pounds

GR-1600XL RATED LIFTING CAPACITIES(IN POUNDS)

ON OUTRIGGERS MID EXTENDED 23'11-3/8" (7.30m) SPREAD COUNTERWEIGHT 64,600lbs (29,300kg) 360° ROTATION													
C	200.1'(61.0m) Boom + 33.8'(10.3m) Hydraulic offset jib						C	187.0'(57.0m) Boom + 33.8'(10.3m) Hydraulic offset jib					
	5° Tilt		20° Tilt		40° Tilt			5° Tilt		20° Tilt		40° Tilt	
	R	W	R	W	R	W		R	W	R	W	R	W
81.5	48.2'	12,100	57.1'	12,100	66.9'	11,200	81.5	42.3'	13,700	51.5'	13,700	61.4'	12,800
81	51.2'	12,100	61.0'	12,100	69.2'	11,000	81	45.0'	13,700	54.1'	13,700	63.3'	12,600
80	56.4'	12,100	65.3'	11,900	74.2'	10,800	80	49.9'	13,700	58.7'	13,400	67.6'	12,100
79	61.7'	12,100	69.6'	11,500	78.7'	10,400	79	54.8'	13,700	63.3'	13,000	71.9'	11,900
78	67.3'	12,100	74.2'	11,000	82.7'	10,100	78	59.7'	13,700	67.6'	12,600	75.5'	11,500
77	71.9'	11,900	80.1'	10,800	86.9'	9,900	77	64.3'	13,700	71.9'	12,300	79.7'	11,200
76	76.4'	11,500	83.0'	10,400	91.2'	9,700	76	68.2'	13,200	76.1'	11,900	83.3'	10,800
75	80.4'	11,000	87.6'	10,100	94.8'	9,300	75	72.5'	12,800	79.7'	11,500	87.3'	10,600
73	89.6'	10,600	96.1'	9,700	103.0'	8,800	73	80.7'	11,900	87.9'	10,800	94.8'	10,100
70	102.0'	9,500	108.0'	8,800	114.0'	8,400	70	92.5'	11,000	99.4'	10,100	105.0'	9,500
68	110.0'	9,000	116.0'	8,400	121.0'	7,900	68	100.0'	10,400	106.0'	9,500	112.0'	9,000
65	122.0'	8,400	127.0'	7,900	132.0'	7,500	65	111.0'	9,500	117.0'	8,800	122.0'	8,400
63	129.0'	7,900	134.0'	7,500	138.0'	7,300	63	118.0'	9,300	124.0'	8,600	128.0'	8,200
60	139.0'	7,300	144.0'	6,800	148.0'	6,600	60	128.0'	8,600	133.0'	8,200	137.0'	7,700
58	145.0'	6,600	150.0'	6,200	153.0'	6,000	58	135.0'	8,200	139.0'	7,700	143.0'	7,500
55	153.0'	5,300	158.0'	5,100	161.0'	4,900	55	143.0'	6,800	148.0'	6,600	150.0'	6,200
53	159.0'	4,600	163.0'	4,200	166.0'	4,000	53	148.0'	6,200	152.0'	5,700	155.0'	5,500
50	166.0'	3,500	171.0'	3,300	173.0'	3,100	50	156.0'	5,100	159.0'	4,600	161.0'	4,400
48	172.0'	3,100	176.0'	2,900	177.0'	2,600	48	160.0'	4,400	164.0'	4,000	166.0'	4,000
45	178.0'	2,200	182.0'	2,000	184.0'	2,000	45	167.0'	3,500	171.0'	3,300	172.0'	3,100
43	183.0'	1,800					43	172.0'	3,100	175.0'	2,900		
40							40	178.0'	2,400	180.0'	2,200		
38							38	182.0'	2,000	184.0'	1,800		

ON OUTRIGGERS MID EXTENDED 23'11-3/8" (7.30m) SPREAD COUNTERWEIGHT 64,600lbs (29,300kg) 360° ROTATION													
C	172.5'(52.6m) Boom + 33.8'(10.3m) Hydraulic offset jib						C	114.9'(35.0m) Boom + 33.8'(10.3m) Hydraulic offset jib					
	5° Tilt		20° Tilt		40° Tilt			5° Tilt		20° Tilt		40° Tilt	
	R	W	R	W	R	W		R	W	R	W	R	W
81.5	37.1'	15,900	46.9'	15,900	57.1'	15,000	81.5			29.2'	23,400	37.1'	16,100
81	39.4'	15,900	49.2'	15,900	59.1'	14,800	81			30.5'	23,100	38.4'	15,900
80	44.0'	15,900	53.5'	15,900	63.0'	14,300	80			33.1'	22,500	41.0'	15,700
79	48.6'	15,900	57.7'	15,400	66.6'	13,900	79			35.8'	22,000	43.3'	15,400
78	52.8'	15,900	61.7'	15,000	70.2'	13,400	78			39.0'	21,400	45.9'	15,200
77	57.4'	15,900	65.3'	14,600	73.8'	13,000	77			41.3'	20,900	48.6'	15,200
76	61.7'	15,900	69.2'	14,100	77.4'	12,800	76			43.6'	20,500	50.9'	15,000
75	64.3'	15,200	73.2'	13,700	80.7'	12,300	75	38.7'	28,200	46.3'	20,100	53.2'	14,800
73	72.2'	14,300	80.1'	12,800	87.6'	11,900	73	44.0'	26,900	51.2'	19,200	57.7'	14,300
70	84.3'	13,000	90.6'	11,900	97.1'	11,000	70	51.2'	24,900	58.7'	18,100	64.6'	13,900
68	91.5'	12,300	97.8'	11,500	104.0'	10,600	68	56.4'	23,800	63.3'	17,400	68.9'	13,700
65	102.0'	11,500	107.0'	10,600	113.0'	9,900	65	63.3'	22,300	70.2'	16,800	75.1'	13,400
63	109.0'	11,000	114.0'	10,100	118.0'	9,700	63	67.9'	21,200	74.8'	16,300	79.4'	13,200
60	118.0'	10,100	123.0'	9,700	127.0'	9,300	60	74.8'	19,800	81.4'	15,700	85.3'	13,000
58	124.0'	9,700	129.0'	9,300	133.0'	8,800	58	79.1'	19,200	85.3'	15,200	89.2'	12,800
55	132.0'	8,400	136.0'	7,700	140.0'	7,500	55	85.3'	18,100	91.5'	14,800	94.8'	12,600
53	136.0'	7,300	141.0'	6,800	144.0'	6,600	53	89.2'	17,400	95.1'	14,300	98.1'	12,600
50	144.0'	6,200	148.0'	5,700	150.0'	5,500	50	95.1'	16,800	101.0'	14,100	103.0'	12,600
48	148.0'	5,300	152.0'	5,100	154.0'	4,900	48	98.8'	16,300	104.0'	13,900	106.0'	12,300
45	155.0'	4,400	158.0'	4,200	160.0'	4,000	45	104.0'	15,200	109.0'	13,400	111.0'	12,300
43	159.0'	4,000	162.0'	3,700			43	107.0'	14,100	112.0'	13,400		
40	165.0'	3,100	168.0'	3,100			40	112.0'	13,000	116.0'	12,300		
38	169.0'	2,900	171.0'	2,600			38	115.0'	12,100	119.0'	11,700		
35	174.0'	2,200	176.0'	2,000			35	119.0'	11,200	123.0'	10,800		
33	177.0'	2,000	179.0'	1,800			33	122.0'	10,600	125.0'	10,400		
30							30	126.0'	9,900	128.0'	9,700		
28							28	128.0'	9,500	130.0'	9,300		
25							25	131.0'	9,000	133.0'	8,800		
23							23	133.0'	8,600				
20							20	135.0'	8,200				

C :Loaded boom angle (°)
R :Load radius in feet
W :Rated lifting capacity in pounds

GR-1600XL RATED LIFTING CAPACITIES(IN POUNDS)

ON OUTRIGGERS MID EXTENDED 23'11-3/8" (7.30m) SPREAD COUNTERWEIGHT 64,600lbs (29,300kg) 360° ROTATION													
C	200.1'(61.0m) Boom + 59.1'(18.0m) Hydraulic offset jib						187.0'(57.0m) Boom + 59.1'(18.0m) Hydraulic offset jib						
	5° Tilt		20° Tilt		40° Tilt		5° Tilt		20° Tilt		40° Tilt		
	R	W	R	W	R	W	R	W	R	W	R	W	
81.5	56.1'	8,200	72.2'	8,200	88.9'	7,100	81.5	47.9'	8,800	65.6'	8,800	81.0'	7,300
81	59.1'	8,200	74.5'	8,200	91.9'	7,100	81	49.2'	8,800	68.2'	8,800	83.7'	7,300
80	65.3'	8,200	81.0'	8,200	97.1'	6,800	80	56.4'	8,800	73.8'	8,800	88.6'	7,100
79	70.9'	8,200	86.3'	8,200	102.0'	6,800	79	61.7'	8,800	78.1'	8,600	92.9'	7,100
78	76.8'	8,200	91.5'	7,900	107.0'	6,600	78	66.6'	8,800	83.3'	8,400	97.4'	7,100
77	82.0'	8,200	96.1'	7,700	112.0'	6,600	77	71.9'	8,800	87.6'	8,200	102.0'	6,800
76	87.9'	8,200	101.0'	7,500	116.0'	6,600	76	77.1'	8,800	92.5'	7,900	106.0'	6,800
75	93.5'	8,200	106.0'	7,300	119.0'	6,400	75	82.0'	8,800	97.1'	7,900	110.0'	6,600
73	103.0'	7,700	115.0'	6,800	129.0'	6,200	73	92.2'	8,800	106.0'	7,700	118.0'	6,600
70	117.0'	7,100	128.0'	6,400	140.0'	5,700	70	106.0'	8,200	119.0'	7,300	129.0'	6,400
68	126.0'	6,800	135.0'	6,000	147.0'	5,500	68	114.0'	7,700	127.0'	7,100	137.0'	6,200
65	138.0'	6,200	149.0'	5,700	158.0'	5,300	65	126.0'	7,300	138.0'	6,600	147.0'	6,200
63	147.0'	6,000	156.0'	5,500	165.0'	5,100	63	135.0'	7,100	146.0'	6,400	154.0'	6,000
60	159.0'	5,500	167.0'	5,100	173.0'	4,400	60	146.0'	6,600	156.0'	6,000	163.0'	5,700
58	164.0'	4,600	172.0'	4,200	178.0'	3,700	58	153.0'	6,200	162.0'	5,500	168.0'	4,900
55	173.0'	3,500	180.0'	3,100	186.0'	2,900	55	161.0'	4,900	170.0'	4,400	175.0'	4,000
53	179.0'	2,900	185.0'	2,600	191.0'	2,200	53	167.0'	4,200	175.0'	3,700	179.0'	3,300
50	187.0'	2,200	193.0'	1,800			50	175.0'	3,300	182.0'	2,900	186.0'	2,600
48							48	180.0'	2,900	187.0'	2,400	190.0'	2,200
45							45	187.0'	2,000	194.0'	1,800		

ON OUTRIGGERS MID EXTENDED 23'11-3/8" (7.30m) SPREAD COUNTERWEIGHT 64,600lbs (29,300kg) 360° ROTATION													
C	172.5'(52.6m) Boom + 59.1'(18.0m) Hydraulic offset jib						114.9'(35.0m) Boom + 59.1'(18.0m) Hydraulic offset jib						
	5° Tilt		20° Tilt		40° Tilt		5° Tilt		20° Tilt		40° Tilt		
	R	W	R	W	R	W	R	W	R	W	R	W	
81.5	45.0'	10,400	61.7'	9,700	76.1'	7,500	81.5	30.2'	14,100	44.6'	11,900	58.7'	8,200
81	47.6'	10,400	64.3'	9,700	78.4'	7,500	81	31.5'	14,100	45.9'	11,700	60.4'	8,200
80	52.8'	10,400	69.2'	9,500	82.7'	7,500	80	35.1'	14,100	49.2'	11,500	63.3'	7,900
79	57.7'	10,400	73.5'	9,300	86.6'	7,300	79	38.4'	14,100	52.5'	11,200	65.9'	7,900
78	63.0'	10,400	78.1'	9,000	90.9'	7,300	78	41.7'	14,100	55.5'	11,000	68.6'	7,900
77	67.3'	10,400	82.0'	8,800	94.8'	7,300	77	44.6'	14,100	58.4'	10,600	71.2'	7,700
76	72.2'	10,400	86.3'	8,600	98.1'	7,100	76	47.9'	14,100	61.0'	10,400	73.8'	7,700
75	76.8'	10,400	90.9'	8,600	102.0'	7,100	75	51.2'	14,100	64.0'	10,100	76.4'	7,700
73	86.6'	10,100	98.8'	8,200	110.0'	6,800	73	57.1'	13,200	70.2'	9,900	81.7'	7,500
70	98.4'	9,500	111.0'	7,700	120.0'	6,600	70	65.9'	12,300	78.1'	9,300	88.9'	7,300
68	114.0'	9,300	118.0'	7,500	127.0'	6,600	68	71.5'	11,700	83.7'	9,000	93.5'	7,100
65	119.0'	8,800	129.0'	7,300	136.0'	6,400	65	80.1'	11,000	91.5'	8,600	100.0'	7,100
63	126.0'	8,400	135.0'	7,100	143.0'	6,400	63	85.3'	10,600	96.5'	8,400	105.0'	7,100
60	136.0'	7,900	146.0'	6,800	152.0'	6,200	60	93.2'	10,100	104.0'	7,900	112.0'	6,800
58	143.0'	7,500	152.0'	6,600	157.0'	6,000	58	98.1'	9,700	109.0'	7,900	116.0'	6,800
55	151.0'	6,000	160.0'	5,300	164.0'	4,900	55	105.0'	9,300	115.0'	7,500	122.0'	6,600
53	157.0'	5,300	165.0'	4,600	168.0'	4,200	53	110.0'	9,000	120.0'	7,500	125.0'	6,600
50	165.0'	4,200	172.0'	3,700	174.0'	3,300	50	117.0'	8,600	126.0'	7,300	130.0'	6,600
48	170.0'	3,500	177.0'	3,300	178.0'	2,900	48	121.0'	8,400	130.0'	7,300	134.0'	6,600
45	178.0'	2,900	183.0'	2,400	184.0'	2,200	45	127.0'	8,200	135.0'	7,100	138.0'	6,600
43	183.0'	2,400	188.0'	2,200			43	131.0'	7,900	138.0'	7,100		
40	190.0'	1,800					40	136.0'	7,700	143.0'	6,800		
38							38	143.0'	7,500	146.0'	6,800		
35							35	145.0'	7,300	150.0'	6,800		
33							33	148.0'	7,300	153.0'	6,800		
30							30	152.0'	7,100	156.0'	6,800		
28							28	155.0'	7,100	158.0'	6,800		
25							25	158.0'	6,600	160.0'	6,400		
23							23	160.0'	6,400				
20							20	162.0'	6,000				

C :Loaded boom angle (°)
R :Load radius in feet
W :Rated lifting capacity in pounds

GR-1600XL RATED LIFTING CAPACITIES(IN POUNDS)

ON OUTRIGGERS MID EXTENDED 18'1/2" (5.50m) SPREAD COUNTERWEIGHT 64,600lbs (29,300kg) 360° ROTATION													
C	200.1'(61.0m) Boom + 33.8'(10.3m) Hydraulic offset jib						C	187.0'(57.0m) Boom + 33.8'(10.3m) Hydraulic offset jib					
	5° Tilt		20° Tilt		40° Tilt			5° Tilt		20° Tilt		40° Tilt	
	R	W	R	W	R	W		R	W	R	W	R	W
81.5	48.2'	12,100	57.1'	12,100	66.9'	11,200	81.5	42.3'	13,700	51.5'	13,700	61.4'	12,800
81	51.2'	12,100	61.0'	12,100	69.2'	11,000	81	45.0'	13,700	54.1'	13,700	63.3'	12,600
80	56.4'	12,100	65.3'	11,900	74.2'	10,800	80	49.9'	13,700	58.7'	13,400	67.6'	12,100
79	61.7'	12,100	69.6'	11,500	78.7'	10,400	79	54.8'	13,700	63.3'	13,000	71.9'	11,900
78	67.3'	12,100	74.2'	11,000	82.7'	10,100	78	59.7'	13,700	67.6'	12,600	75.5'	11,500
77	71.9'	11,900	80.1'	10,800	86.9'	9,900	77	64.3'	13,700	71.9'	12,300	79.7'	11,200
76	76.4'	11,500	83.0'	10,400	91.2'	9,700	76	68.2'	13,200	76.1'	11,900	83.3'	10,800
75	80.4'	11,000	87.6'	10,100	94.8'	9,300	75	72.5'	12,800	79.7'	11,500	87.3'	10,600
73	89.6'	10,600	96.1'	9,700	103.0'	8,800	73	80.7'	11,900	87.9'	10,800	94.8'	10,100
70	102.0'	9,500	108.0'	8,800	114.0'	8,400	70	92.5'	11,000	99.4'	10,100	105.0'	9,500
68	109.0'	8,600	115.0'	7,900	120.0'	7,300	68	100.0'	10,400	106.0'	9,500	112.0'	9,000
65	118.0'	6,600	124.0'	6,000	129.0'	5,500	65	110.0'	8,400	116.0'	7,700	120.0'	7,100
63	124.0'	5,300	130.0'	4,900	135.0'	4,600	63	116.0'	7,100	121.0'	6,400	125.0'	6,000
60	133.0'	3,700	139.0'	3,500	143.0'	3,300	60	124.0'	5,300	129.0'	4,900	133.0'	4,600
58	139.0'	3,100	144.0'	2,600	149.0'	2,600	58	130.0'	4,400	135.0'	4,000	138.0'	3,700
55	148.0'	2,000	153.0'	1,800			55	138.0'	3,100	143.0'	2,900	146.0'	2,600
53							53	143.0'	2,400	148.0'	2,200	151.0'	2,200

ON OUTRIGGERS MID EXTENDED 18'1/2" (5.50m) SPREAD COUNTERWEIGHT 64,600lbs (29,300kg) 360° ROTATION													
C	172.5'(52.6m) Boom + 33.8'(10.3m) Hydraulic offset jib						C	114.9'(35.0m) Boom + 33.8'(10.3m) Hydraulic offset jib					
	5° Tilt		20° Tilt		40° Tilt			5° Tilt		20° Tilt		40° Tilt	
	R	W	R	W	R	W		R	W	R	W	R	W
81.5	37.1'	15,900	46.9'	15,900	57.1'	15,000	81.5			29.2'	23,400	37.1'	16,100
81	39.4'	15,900	49.2'	15,900	59.1'	14,800	81			30.5'	23,100	38.4'	15,900
80	44.0'	15,900	53.5'	15,900	63.0'	14,300	80			33.1'	22,500	41.0'	15,700
79	48.6'	15,900	57.7'	15,400	66.6'	13,900	79			35.8'	22,000	43.3'	15,400
78	52.8'	15,900	61.7'	15,000	70.2'	13,400	78			39.0'	21,400	45.9'	15,200
77	57.4'	15,900	65.3'	14,600	73.8'	13,000	77			41.3'	20,900	48.6'	15,200
76	61.7'	15,900	69.2'	14,100	77.4'	12,800	76			43.6'	20,500	50.9'	15,000
75	64.3'	15,200	73.2'	13,700	80.7'	12,300	75	38.7'	28,200	46.3'	20,100	53.2'	14,800
73	72.2'	14,300	80.1'	12,800	87.6'	11,900	73	44.0'	26,900	51.2'	19,200	57.7'	14,300
70	84.3'	13,000	90.6'	11,900	97.1'	11,000	70	51.2'	24,900	58.7'	18,100	64.6'	13,900
68	91.5'	12,300	97.8'	11,500	104.0'	10,600	68	56.4'	23,800	63.3'	17,400	68.9'	13,700
65	100.0'	9,900	106.0'	9,000	111.0'	8,400	65	63.3'	22,300	70.2'	16,800	75.1'	13,400
63	106.0'	8,400	112.0'	7,700	117.0'	7,300	63	67.9'	21,200	74.8'	16,300	79.4'	13,200
60	114.0'	6,600	120.0'	6,200	124.0'	5,700	60	74.8'	19,800	81.4'	15,700	85.3'	13,000
58	120.0'	5,500	125.0'	5,100	129.0'	4,900	58	78.7'	17,900	85.3'	15,200	89.2'	12,800
55	128.0'	4,200	133.0'	4,000	136.0'	3,500	55	85.0'	15,200	91.5'	14,100	94.8'	12,600
53	133.0'	3,500	137.0'	3,100	141.0'	2,900	53	88.9'	13,900	95.5'	13,000	98.4'	12,300
50	140.0'	2,400	144.0'	2,200	147.0'	2,000	50	94.5'	12,100	100.0'	11,500	103.0'	10,800
48	145.0'	1,800	149.0'	1,800			48	98.1'	11,000	104.0'	10,400	106.0'	9,900
45							45	103.0'	9,700	109.0'	9,300	111.0'	9,000
43							43	106.0'	9,000	112.0'	8,600		
40							40	111.0'	7,900	116.0'	7,700		
38							38	114.0'	7,500	118.0'	7,100		
35							35	118.0'	6,600	122.0'	6,400		
33							33	121.0'	6,200	125.0'	6,000		
30							30	125.0'	5,700	128.0'	5,500		
28							28	127.0'	5,300	130.0'	5,100		
25							25	130.0'	4,900	132.0'	4,900		
23							23	132.0'	4,600				
20							20	134.0'	4,400				

C :Loaded boom angle (°)
R :Load radius in feet
W :Rated lifting capacity in pounds

GR-1600XL RATED LIFTING CAPACITIES(IN POUNDS)

ON OUTRIGGERS MID EXTENDED 18'1/2" (5.50m) SPREAD COUNTERWEIGHT 64,600lbs (29,300kg) 360° ROTATION													
C	200.1'(61.0m) Boom + 59.1'(18.0m) Hydraulic offset jib						187.0'(57.0m) Boom + 59.1'(18.0m) Hydraulic offset jib						
	5° Tilt		20° Tilt		40° Tilt		5° Tilt		20° Tilt		40° Tilt		
	R	W	R	W	R	W	R	W	R	W	R	W	
81.5	56.1'	8,200	72.2'	8,200	88.9'	7,100	81.5	47.9'	8,800	65.6'	8,800	81.0'	7,300
81	59.1'	8,200	74.5'	8,200	91.9'	7,100	81	49.2'	8,800	68.2'	8,800	83.7'	7,300
80	65.3'	8,200	81.0'	8,200	97.1'	6,800	80	56.4'	8,800	73.8'	8,800	88.6'	7,100
79	70.9'	8,200	86.3'	8,200	102.0'	6,800	79	61.7'	8,800	78.1'	8,600	92.9'	7,100
78	76.8'	8,200	91.5'	7,900	106.6'	6,600	78	66.6'	8,800	83.3'	8,400	97.4'	7,100
77	82.0'	8,200	96.1'	7,700	111.6'	6,600	77	71.9'	8,800	87.6'	8,200	102.0'	6,800
76	87.9'	8,200	101.0'	7,500	115.8'	6,600	76	77.1'	8,800	92.5'	7,900	106.0'	6,800
75	93.5'	8,200	106.0'	7,300	119.4'	6,400	75	82.0'	8,800	97.1'	7,900	110.0'	6,600
73	103.0'	7,700	115.0'	6,800	128.6'	6,200	73	92.2'	8,800	106.0'	7,700	118.0'	6,600
70	117.0'	7,100	128.0'	6,400	139.8'	5,700	70	106.0'	8,200	119.0'	7,300	129.0'	6,400
68	125.0'	6,200	134.0'	5,300	144.7'	4,600	68	114.0'	7,700	126.0'	6,600	135.0'	5,700
65	134.0'	4,400	143.0'	3,700	152.9'	3,300	65	124.0'	6,000	135.0'	5,100	144.0'	4,400
63	141.0'	3,500	150.0'	2,900	158.5'	2,400	63	131.0'	4,900	141.0'	4,200	149.0'	3,500
60	150.0'	2,200	159.0'	1,800			60	140.0'	3,500	150.0'	2,900	158.0'	2,600
58							58	146.0'	2,600	156.0'	2,200	163.0'	2,000
55							55	155.0'	1,800				

ON OUTRIGGERS MID EXTENDED 18'1/2" (5.50m) SPREAD COUNTERWEIGHT 64,600lbs (29,300kg) 360° ROTATION													
C	172.5'(52.6m) Boom + 59.1'(18.0m) Hydraulic offset jib						114.9'(35.0m) Boom + 59.1'(18.0m) Hydraulic offset jib						
	5° Tilt		20° Tilt		40° Tilt		5° Tilt		20° Tilt		40° Tilt		
	R	W	R	W	R	W	R	W	R	W	R	W	
81.5	45.0'	10,400	61.7'	9,700	76.1'	7,500	81.5	30.2'	14,100	44.6'	11,900	58.7'	8,200
81	47.6'	10,400	64.3'	9,700	78.4'	7,500	81	31.5'	14,100	45.9'	11,700	60.4'	8,200
80	52.8'	10,400	69.2'	9,500	82.7'	7,500	80	35.1'	14,100	49.2'	11,500	63.3'	7,900
79	57.7'	10,400	73.5'	9,300	86.6'	7,300	79	38.4'	14,100	52.5'	11,200	65.9'	7,900
78	63.0'	10,400	78.1'	9,000	90.9'	7,300	78	41.7'	14,100	55.5'	11,000	68.6'	7,900
77	67.3'	10,400	82.0'	8,800	94.8'	7,300	77	44.6'	14,100	58.4'	10,600	71.2'	7,700
76	72.2'	10,400	86.3'	8,600	98.1'	7,100	76	47.9'	14,100	61.0'	10,400	73.8'	7,700
75	76.8'	10,400	90.9'	8,600	102.0'	7,100	75	51.2'	14,100	64.0'	10,100	76.4'	7,700
73	86.6'	10,100	98.8'	8,200	110.0'	6,800	73	57.1'	13,200	70.2'	9,900	81.7'	7,500
70	98.4'	9,500	111.0'	7,700	120.0'	6,600	70	65.9'	12,300	78.1'	9,300	88.9'	7,300
68	114.0'	9,300	118.0'	7,500	127.0'	6,600	68	71.5'	11,700	83.7'	9,000	93.5'	7,100
65	116.0'	7,300	128.0'	6,200	135.0'	5,500	65	80.1'	11,000	91.5'	8,600	100.0'	7,100
63	122.0'	6,000	134.0'	5,300	141.0'	4,600	63	85.3'	10,600	96.5'	8,400	105.0'	7,100
60	131.0'	4,400	142.0'	4,000	148.0'	3,300	60	93.2'	10,100	104.0'	7,900	112.0'	6,800
58	138.0'	3,700	147.0'	3,100	153.0'	2,600	58	98.1'	9,700	109.0'	7,900	116.0'	6,800
55	147.0'	2,600	156.0'	2,200	160.0'	1,800	55	105.0'	9,300	115.0'	7,500	122.0'	6,600
53	153.0'	2,000					53	110.0'	9,000	120.0'	7,500	125.0'	6,600
50							50	117.0'	8,600	126.0'	7,300	130.0'	6,600
48							48	121.0'	8,400	130.0'	7,300	134.0'	6,600
45							45	127.0'	7,300	135.0'	6,600	138.0'	6,200
43							43	131.0'	6,600	138.0'	6,200		
40							40	136.0'	5,700	143.0'	5,300		
38							38	139.0'	5,300	146.0'	5,100		
35							35	144.0'	4,900	149.0'	4,400		
33							33	147.0'	4,400	152.0'	4,200		
30							30	151.0'	4,000	155.0'	3,700		
28							28	154.0'	3,700	157.0'	3,500		
25							25	157.0'	3,300	159.0'	3,100		
23							23	159.0'	3,100				
20							20	162.0'	2,900				

C : Loaded boom angle (°)
R : Load radius in feet
W : Rated lifting capacity in pounds