

# CRAWLMASTER™ 1208i

THE “INTELLIGENT” CRUSHING UNIT ON CRAWLERS



**SANDVIK ROCK PROCESSING**

# INTELLIGENCE

on crawler tracks

Crawlmaster™ 1208i is the new generation of the well-known Crawlmaster™ 1208, proven for years in hard rock in global applications. The “i” stands for “intelligence” because that’s what we’ve added.

The control system provides loads of useful information and facilitates sequenced start-ups/close-downs as well as fault tracing. The intelligence gives full control of the process and provides the operator with an insight into the unit’s operation regarding production data and production history, indications of service and maintenance etc. The process is continuously and automatically monitored by the intelligence. The productivity is maximized through a steady, smooth flow of material. A number of sensors at different key locations, assure a trouble-free operation and safeguard against costly breakdowns.

The material flow is controlled automatically but offers the possibility to override the automation manually. Userfriendly messages explain each function step by step. In a multi-stage crushing process setup, the system communicates with subsequent units.

# What can CRAWLMASTER™ 1208i do for you?

**The CM 1208i-family** can be used under any climatic conditions – thanks to a careful choice of quality components.

**Advanced process automation** by interlocking.

**Easy to move** away and back into position in connection with blasting thanks to crawler tracks, radio remote control and no dismantling of equipment.

**Quick set-up and close-down** thanks to road transport in one piece and hydraulically foldable feed hopper sides.

**Easy inspection and maintenance** thanks to roomy build and easily accessible maintenance items. In detail manuals offer clear and simple direction.

**Economical operation** thanks to one operator for both loader and crushing unit.

**Quick return on investment** thanks to low operation cost and high productivity.

**Crusher** with large feed opening; choice of plate configuration and fast close side setting.

**Good working environment** thanks to suppression of dust, noise and emission. Dust sealed product discharge conveyor.

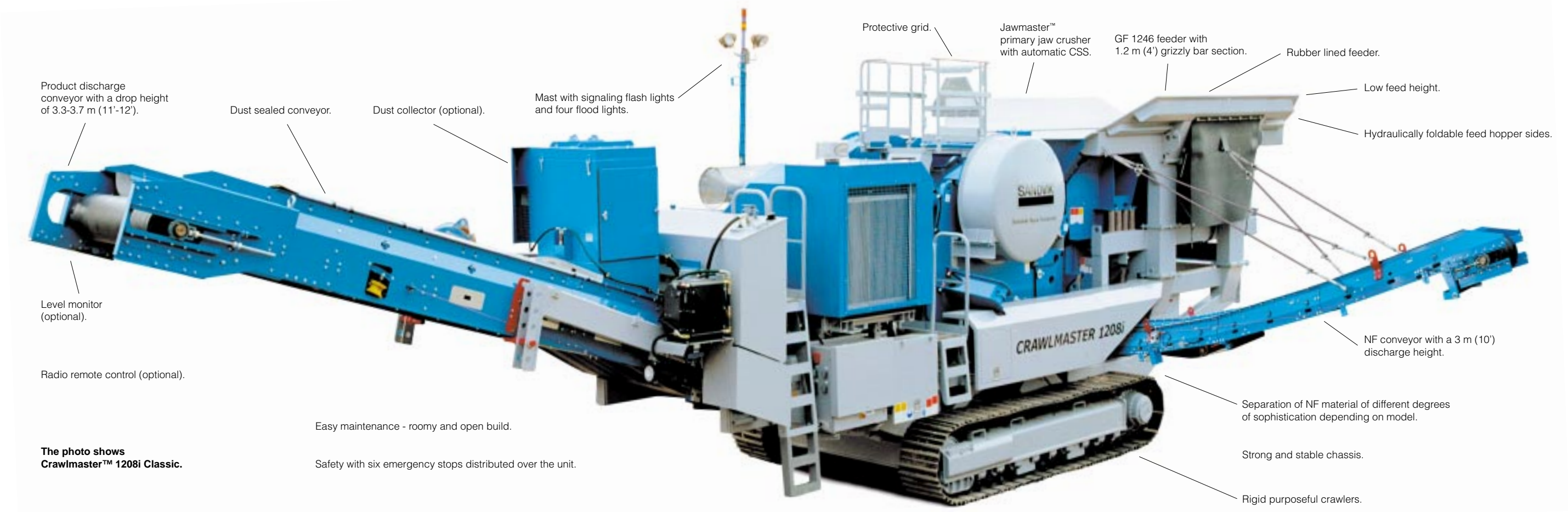
**Powerful and economical** thanks to modern, on-board diesel engine with low fuel consumption and minimum transmission losses. Emissions according to EU and USA norms.

**No spillage of hydraulic oil** during filter changes thanks to vacuumized system.

**Staff training and commissioning** under the supervision of Sandvik Rock Processing part of the delivery.



# MAXIMUM PRODUCTION WITH MINIMUM EFFORT



Product discharge conveyor with a drop height of 3.3-3.7 m (11'-12').

Dust sealed conveyor.

Dust collector (optional).

Mast with signaling flash lights and four flood lights.

Protective grid.

Jawmaster™ primary jaw crusher with automatic CSS.

GF 1246 feeder with 1.2 m (4') grizzly bar section.

Rubber lined feeder.

Low feed height.

Hydraulically foldable feed hopper sides.

Level monitor (optional).

Radio remote control (optional).

Easy maintenance - roomy and open build.

Safety with six emergency stops distributed over the unit.

**The photo shows Crawlmaster™ 1208i Classic.**

Separation of NF material of different degrees of sophistication depending on model.

Strong and stable chassis.

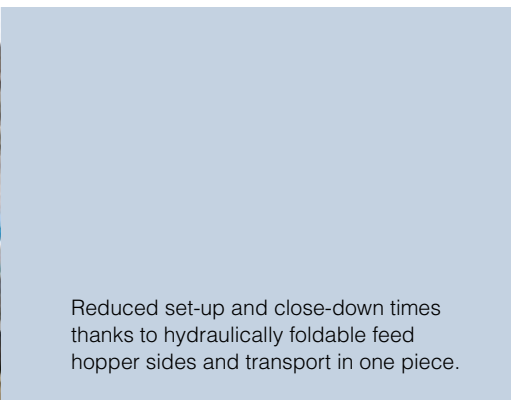
Rigid purposeful crawlers.



Reduced hazards during manual inspections thanks to protection grid over the crusher opening.



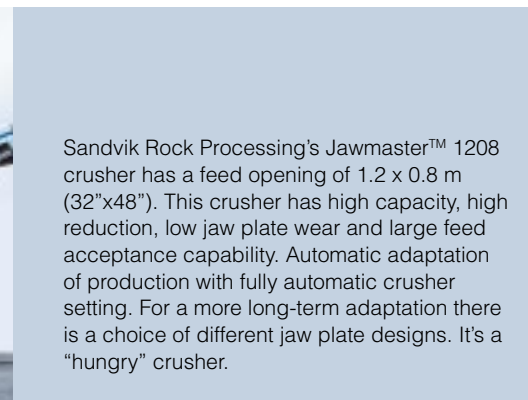
The discharge product conveyor is dust sealed. Dust filter or water spray nozzles in the crusher and on this conveyor are options. It features impact bars, belt scrapers and self-lubrication idlers and requires little maintenance.



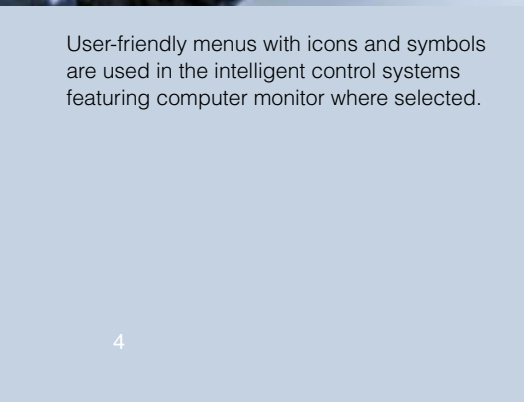
Reduced set-up and close-down times thanks to hydraulically foldable feed hopper sides and transport in one piece.



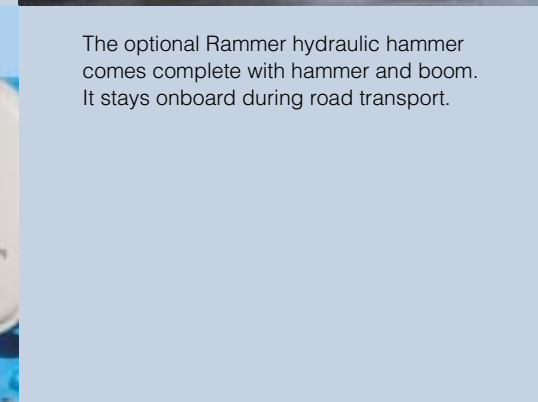
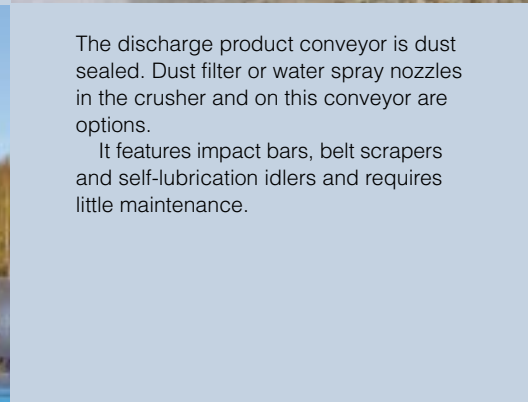
The optional Rammer hydraulic hammer comes complete with hammer and boom. It stays onboard during road transport.



Sandvik Rock Processing's Jawmaster™ 1208 crusher has a feed opening of 1.2 x 0.8 m (32"x48"). This crusher has high capacity, high reduction, low jaw plate wear and large feed acceptance capability. Automatic adaptation of production with fully automatic crusher setting. For a more long-term adaptation there is a choice of different jaw plate designs. It's a "hungry" crusher.



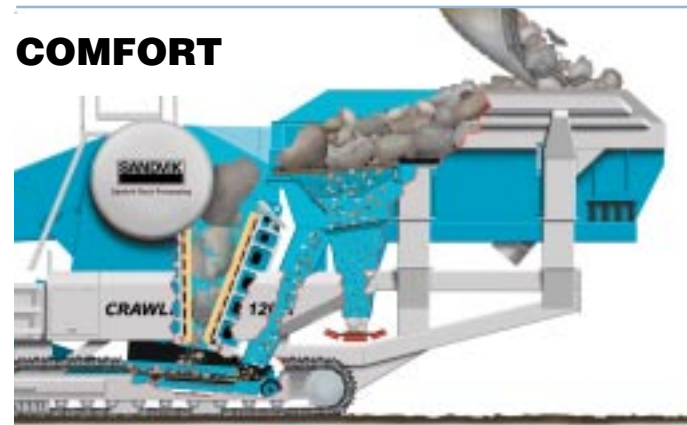
User-friendly menus with icons and symbols are used in the intelligent control systems featuring computer monitor where selected.



# Three versions SELECT YOUR FAVOURITE

The 3 members of the Crawlmaster™ 1208i family are versatile, highly mobile crushing units. All three provide unsurpassed mobility on site thanks to crawler tracks. They have crusher, crawlers, diesel engine and main product belt conveyor in common. The feed hopper bottom is lined with rubber for less noise, less wear and less sticking of material. They all have good access to vital service points.

## COMFORT



### For the crushing of clean rock.

Purpose designed for the crushing of clean rock. Crawlmaster 1208i Comfort crushing units have a feeder with a grizzly section and an extra, single screen deck. There are 2 chutes under the grizzly/screen, one for bypassing the crusher and one for stockpiling natural fines, NF. An NF discharge belt conveyor for right- or left-hand side connection is optional. The feed station is removable in order to accommodate road transport where required.

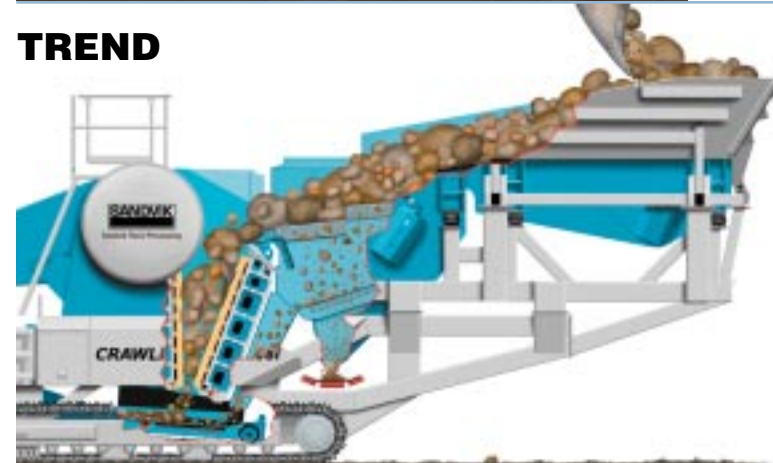
## CLASSIC



### For the crushing of rock and gravel.

Crawlmaster 1208i Classic has been designed with crushing of rock and gravel in mind. Equipped with a grizzly feeder and a separate screen for the removal of natural fines, NF, under more difficult conditions. Chute and optional NF-conveyor under the NF-screen are similar to the corresponding parts on Comfort crushing units. The feed station is removable in order to accommodate road transport where required.

## TREND



### For the crushing of unclean rock and gravel with much fine material.

Crawlmaster 1208i Trend crushing units have been designed for rock and gravel containing lots of fine material. Trend units are equipped with a separate screen with a stepped grizzly and a conventional lower deck. It operates at maximum capacity at all times independent from the feeder. The separated fine material can either be stockpiled or bypassed the crusher. Chutes and belt conveyors are similar to those on CM 1208i Classic and Comfort crushing units.

# OPTIMIZE your unit

**Oversize boulder fix** with on-board Rammer hydraulic hammer complete with hammer and boom. The hammer stays onboard during road transport.

**Protection of secondary stage crusher and cleaning of crushed product** with over band magnet.

**Improved working environment** with dust suppression by self cleaning dust collector and water spray system with nozzles on crusher and on discharge conveyor.

**Efficient removal of natural fines, NF,** thanks to a conveyor for left-hand or right-hand side connection with a 3 m (10 ft) discharge height.

**Simplified daily maintenance** with automatic lubrication system for the jaw crusher.

**Work and move around the clock** with extra flood lights mounted close to the crawlers.

**Fast adaptation of production** with a fully automatic crusher setting as standard. Optional different jaw plate designs offer the possibility to fine tune operation.

**Operator free to move around** thanks to remote control by radio. The control box can be placed in the cabin of the excavator or wheel loader.

**Undisputable production data** with belt scale on discharge conveyor. This feature is also useful in order to maximize jaw plate wear life.

**Proven to handle the most extreme weather conditions** with a choice of engine pre-heater and different types of oils.

# TECHNICAL DATA

Dimension		Comfort & Classic	Trend
Operation	Height	4.25 m / 167"	4.90 m / 193"
	Width	3.13 m / 123"	3.58 m / 141"
	Length	16.37 m / 54'	17.90 m / 59'
Transport	Height	3.80 m / 150"	4.09 m / 161"
	Width	3.00 m / 118"	3.39 m / 133"
	Length	16.43 m / 54'	18.00 m / 59'

Weight (excl. options)	Comfort	Classic	Trend
tons	58	59	70
short tons	64	65	77

Feed station	Comfort	Classic	Trend
Feeder type	GF 1246	GF 1246	F 1235
Grizzly section	1.2 m / 4'	1.2 m / 4'	–
Hopper volume	6 m <sup>3</sup> / 210 ft <sup>3</sup>	6 m <sup>3</sup> / 210 ft <sup>3</sup>	10 m <sup>3</sup> / 350 ft <sup>3</sup>
Screen type	–	FF 1210	S 1220
Decks	–	2	2 (stepped grizzly on top)

Crusher	
Type	Sandvik Jawmaster™ 1208
Feed opening	1200x800 mm / 48x32"
Drive	From diesel engine via V-belts and hydraulic coupling

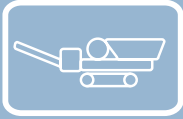
Discharge conveyor	
Belt width	1400 mm / 52"
Drive	Fixed speed hydraulic motors
Approx. Discharge height under drum	3.3–3.8 m / 10'10"–12'5"

On-board power pack	
Diesel engine	Deutz BF6M 1015C turbo-charged, intercooled V6
Rated output	256 kW / 350 hp at 1500 rpm
Fuel tank volume	938 dm <sup>3</sup> / 250 US gallons

Hydraulic system	
Power source	Pumps mounted on power pack
Oil tank volume	350 dm <sup>3</sup> / 92 US gallons

Crawler tracks	
Type	D6C
Length c-c	3715 mm / 145"
Track shoe width	500 mm / 20"

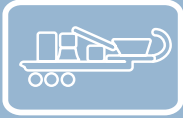
Performance	
Max. feed size	760 mm / 30"
Capacity (up to)	600 mtph
Approx fuel consumption at 75 % continuous load	25–35 l/h / 7–9 US gallons/h
Max. slope-climbing capability	Approx. 20°



**CRAWLMASTER™:** A range of crawler-mounted crushing and screening units that offer excellent mobility in both the working area and on the road. High capacity and high productivity give a quick return on investment. Units can be linked up to solve any process requirements.



**ROADMASTER™:** A range of wheel-mounted crushing and screening units that are made to meet low investment requirements. The equipment on board is of the highest standards to ensure maximum availability and a long service life.



**SCORPION™:** Compact wheel-mounted crushing and screening units with high mobility. Scorpion is a complete process on one chassis with feeder, jaw crusher, cone crusher, large screen and conveyors.



**ROADCLASSIFIER™:** Crushing and screening units with everything on board. These final stage units produce up to four high quality fractions. The automatic process control system makes them easy to operate and a variety of settings offers a wide range of product sizes.

Sandvik is a high-technology engineering Group with advanced products and a world-leading position within selected niches; tools for metalworking, machinery, tools for rock-excitation, products in stainless steel, special alloys, high-temperature materials and process systems. Sandvik Rock Processing is a product area within Sandvik Mining and Construction and manufactures products for the mining and construction industry; crushers, screens, feeders, mobile crushers and screening stations. Worldwide business activities are conducted through 300 companies and representation in 130 countries.

