

CREATING THE NFL SCHEDULE

2019 NFL PLAYING SCHEDULE

	DAL	NYG	PHI	WAS	CHI	DET	GB	MIN	ATL	CAR	NO	TB	ARZ	LAR	SF	SEA	BUF	MIA	NE	NYJ	BAL	CIN	CLE	PIT	HOU	IND	JAC	TEN	DEN	KC	OAK	LAC
1	NYG	DAL	WAS	PHI	GB	ARZ	CHI	ATL	MIN	LAR	HOU	SF	DET	CAR	TB	CIN	NYJ	BAL	PIT	BUF	MIA	SEA	TEN	NE	NO	LAC	KC	CLE	OAK	JAC	DEN	IND
2	WAS	BUF	ATL	DAL	DEN	LAC	MIN	GB	PHI	TB	LAR	CAR	BAL	NO	CIN	PIT	NYG	NE	MIA	CLE	ARZ	SF	NYJ	SEA	JAC	TEN	HOU	IND	CHI	OAK	KC	DET
3	MIA	TB	DET	CHI	WAS	PHI	DEN	OAK	IND	ARZ	SEA	NYG	CAR	CLE	PIT	NO	CIN	DAL	NYJ	NE	KC	BUF	LAR	SF	LAC	ATL	TEN	JAC	GB	BAL	MIN	HOU
4	NO	WAS	GB	NYG	MIN	KC	PHI	CHI	TEN	HOU	DAL	LAR	SEA	TB		ARZ	NE	LAC	BUF		CLE	PIT	BAL	CIN	CAR	OAK	DEN	ATL	JAC	DET	IND	MIA
5	GB	MIN	NYJ	NE	OAK		DAL	NYG	HOU	JAC	TB	NO	CIN	SEA	CLE	LAR	TEN		WAS	PHI	PIT	ARZ	SF	BAL	ATL	KC	CAR	BUF	LAC	IND	CHI	DEN
6	NYJ	NE	MIN	MIA		GB	DET	PHI	ARZ	TB	JAC	CAR	ATL	SF	LAR	CLE		WAS	NYG	DAL	CIN	BAL	SEA	LAC	KC		NO	DEN	TEN	HOU		PIT
7	PHI	ARZ	DAL	SF	NO	MIN	OAK	DET	LAR		CHI		NYG	ATL	WAS	BAL	MIA	BUF	NYJ	NE	SEA	JAC			IND	HOU	CIN	LAC	KC	DEN	GB	TEN
8		DET	BUF	MIN	LAC	NYG	KC	WAS	SEA	SF	ARZ	TEN	NO	CIN	CAR	ATL	PHI	PIT	CLE	JAC		LAR	NE	MIA	OAK	DEN	NYJ	TB	IND	GB	HOU	CHI
9	NYG	DAL	CHI	BUF	PHI	OAK	LAC	KC		TEN		SEA	SF		ARZ	TB	WAS	NYJ	BAL	MIA	NE		DEN	IND	JAC	PIT	HOU	CAR	CLE	MIN	DET	GB
10	MIN	NYJ			DET	CHI	CAR	DAL	NO	GB	ATL	ARZ	TB	PIT	SEA	SF	CLE	IND		NYG	CIN	BAL	BUF	LAR		MIA		KC		TEN	LAC	OAK
11	DET		NE	NYJ	LAR	DAL		DEN	CAR	ATL	TB	NO	SF	CHI	ARZ		MIA	BUF	PHI	WAS	HOU	OAK	PIT	CLE	BAL	JAC	IND		MIN	LAC	CIN	KC
12	NE	CHI	SEA	DET	NYG	WAS	SF		TB	NO	CAR	ATL		BAL	GB	PHI	DEN	CLE	DAL	OAK	LAR	PIT	MIA	CIN	IND	HOU	TEN	JAC	BUF		NYJ	
13	BUF	GB	MIA	CAR	DET	CHI	NYG	SEA	NO	WAS	ATL	JAC	LAR	ARZ	BAL	MIN	DAL	PHI	HOU	CIN	SF	NYJ	PIT	CLE	NE	TEN	TB	IND	LAC	OAK	KC	DEN
14	CHI	PHI	NYG	GB	DAL	MIN	WAS	DET	CAR	ATL	SF	IND	PIT	SEA	NO	LAR	BAL	NYJ	KC	MIA	BUF	CLE	CIN	ARZ	DEN	TB	LAC	OAK	HOU	NE	TEN	JAC
15	LAR	MIA	WAS	PHI	GB	TB	CHI	LAC	SF	SEA	IND	DET	CLE	DAL	ATL	CAR	PIT	NYG	CIN	BAL	NYJ	NE	ARZ	BUF	TEN	NO	OAK	HOU	KC	DEN	JAC	MIN
16	PHI	WAS	DAL	NYG	KC	DEN	MIN	GB	JAC	IND	TEN	HOU	SEA	SF	LAR	ARZ	NE	CIN	BUF	PIT	CLE	MIA	BAL	NYJ	TB	CAR	ATL	NO	DET	CHI	LAC	OAK
17	WAS	PHI	NYG	DAL	MIN	GB	DET	CHI	TB	NO	CAR	ATL	LAR	ARZ	SEA	SF	NYJ	NE	MIA	BUF	PIT	CLE	CIN	BAL	TEN	JAC	IND	HOU	OAK	LAC	DEN	KC

- Process begins at the conclusion of the regular season, once all 256 match-ups are determined
- 32 Clubs provide input (stadium blocks, travel considerations, competitive factors, key initiatives, etc.)
- Entire process takes about 3 months with the computers working 24 hours a day

2019 NON-DIVISIONAL OPPONENT BREAKDOWN

INTRACONFERENCE GAMES

AMERICAN FOOTBALL CONFERENCE												NATIONAL FOOTBALL CONFERENCE											
AFC EAST			AFC NORTH			AFC SOUTH			AFC WEST			NFC EAST			NFC NORTH			NFC SOUTH			NFC WEST		
Home	Away		Home	Away		Home	Away		Home	Away		Home	Away		Home	Away		Home	Away		Home	Away	
BUF	BAL	CLE	BAL	NE	BUF	HOU	DEN	KC	DEN	JAX	HOU	DAL	GB	CHI	CHI	DAL	PHL	ATL	LAR	ARZ	ARZ	ATL	NO
	CIN	PIT		NYJ	MIA		OAK	LAC		TEN	IND		MIN	DET		NYG	WAS		SEA	SF		CAR	TB
MIA	BAL	CLE	CIN	NE	BUF	IND	DEN	KC	OAK	JAX	HOU	NYG	GB	CHI	DET	DAL	PHL	CAR	LAR	ARZ	SF	ATL	NO
	CIN	PIT		NYJ	MIA		OAK	LAC		TEN	IND		MIN	DET		NYG	WAS		SEA	SF		CAR	TB
NE	CLE	BAL	CLE	BUF	NE	JAX	KC	DEN	KC	HOU	JAX	PHL	CHI	GB	GB	PHL	DAL	NO	ARZ	LAR	LAR	NO	ATL
	PIT	CIN		MIA	NYJ		LAC	OAK		IND	TEN		DET	MIN		WAS	NYG		SF	SEA		TB	CAR
NYJ	CLE	BAL	PIT	BUF	NE	TEN	KC	DEN	LAC	HOU	JAX	WAS	CHI	GB	MIN	PHL	DAL	TB	ARZ	LAR	SEA	NO	ATL
	PIT	CIN		MIA	NYJ		LAC	OAK		IND	TEN		DET	MIN		WAS	NYG		SF	SEA		TB	CAR
AFC EAST	AFC NORTH		AFC SOUTH		AFC WEST		NFC EAST		NFC NORTH		NFC SOUTH		NFC WEST										
Home	Away	Home	Away	Home	Away	Home	Away	Home	Away	Home	Away	Home	Away	Home	Away								
NE	KC	HOU	BAL	HOU	KC	HOU	NE	BAL	KC	BAL	NE	DAL	LAR	NO	CHI	NO	LAR	NO	DAL	CHI	LAR	CHI	DAL
	LAC	IND	PIT	IND	LAC	IND	MIA	PIT	LAC	PIT	MIA	PHL	SEA	ATL	MIN	ATL	SEA	ATL	PHL	MIN	SEA	MIN	PHL
BUF	DEN	TEN	CLE	TEN	DEN	TEN	BUF	CLE	DEN	CLE	BUF	WAS	SF	CAR	GB	CAR	SF	CAR	WAS	GB	SF	GB	WAS
	OAK	JAX	CIN	JAX	OAK	JAX	NYJ	CIN	OAK	CIN	NYJ	NYG	ARZ	TB	DET	TB	ARZ	TB	NYG	DET	ARZ	DET	NYG

INTERCONFERENCE GAMES

AMERICAN FOOTBALL CONFERENCE												NATIONAL FOOTBALL CONFERENCE											
AFC EAST			AFC NORTH			AFC SOUTH			AFC WEST			NFC EAST			NFC NORTH			NFC SOUTH			NFC WEST		
Home	Away		Home	Away		Home	Away		Home	Away		Home	Away		Home	Away		Home	Away		Home	Away	
BUF	PHL	DAL	BAL	ARZ	LAR	HOU	ATL	NO	DEN	CHI	GB	DAL	BUF	NE	CHI	KC	DEN	ATL	JAX	HOU	ARZ	CLE	BAL
	WAS	NYG		SF	SEA		CAR	TB		DET	MIN		MIA	NYJ		LAC	OAK		TEN	IND		PIT	CIN
MIA	PHL	DAL	CIN	ARZ	LAR	IND	ATL	NO	OAK	CHI	GB	NYG	BUF	NE	DET	KC	DEN	CAR	JAX	HOU	SF	CLE	BAL
	WAS	NYG		SF	SEA		CAR	TB		DET	MIN		MIA	NYJ		LAC	OAK		TEN	IND		PIT	CIN
NE	DAL	PHL	CLE	LAR	ARZ	JAX	NO	ATL	KC	GB	CHI	PHL	NE	BUF	GB	DEN	KC	NO	HOU	JAX	LAR	BAL	CLE
	NYG	WAS		SEA	SF		TB	CAR		MIN	DET		NYJ	MIA		OAK	LAC		IND	TEN		CIN	PIT
NYJ	DAL	PHL	PIT	LAR	ARZ	TEN	NO	ATL	LAC	GB	CHI	WAS	NE	BUF	MIN	DEN	KC	TB	HOU	JAX	SEA	BAL	CLE
	NYG	WAS		SEA	SF		TB	CAR		MIN	DET		NYJ	MIA		OAK	LAC		IND	TEN		CIN	PIT



2019 NFL PLAYING SCHEDULE

BLANK BOARD

	DAL	NYG	PHI	WAS	CHI	DET	GB	MIN	ATL	CAR	NO	TB	ARZ	LAR	SF	SEA	BUF	MIA	NE	NYJ	BAL	CIN	CLE	PIT	HOU	IND	JAC	TEN	DEN	KC	OAK	LAC
1																																
2																																
3																																
4																																
5																																
6																																
7																																
8																																
9																																
10																																
11																																
12																																
13																																
14																																
15																																
16																																
17																																

- Each box represents a potential site for an NFL game
- There are 256 games and 32 byes to fit into 544 boxes
- Hundreds of trillions of possible completed NFL schedules



2019 NFL PLAYING SCHEDULE

SPORTS NUT

How Hard Is It to Predict the St. Louis Rams' Schedule?

So hard that the team should offer a prize of \$135 trillion for getting it exactly right.

By BEN BLATT

APRIL 15, 2014 • 4:42 PM

Predicting everything

The probabilities above, based on many assumptions, account for everything the Rams require to win the \$100,000 (location, date, and opponent). If we multiply all those chances together, we get ... 1 out of 16,294,782,089,552,200.

NFL's search for perfect schedule continues

Nate Davis, USA TODAY

Published 1:36 p.m. ET April 17, 2019 | Updated 10:14 p.m. ET April 17, 2019

Finding the perfect NFL schedule is a crusade that may be infinitely more difficult than unearthing the Holy Grail itself.

There are exponentially more potential permutations to the league's 256-game regular season — the 2019 lineup will be [revealed tonight](#) — than there are atoms in the universe. Literally.

Consequently, the NFL, which transitioned about 15 years ago from a manual approach to schedule design to a heavily automated one, has enlisted outside help while attempting to streamline and optimize the process.

"This is, by far, the hardest mathematical thing I've ever done," Dr. Mark Karwan, a professor of operations research at the University at Buffalo, told USA TODAY Sports.

2019 NFL PLAYING SCHEDULE

"To grasp how quickly nonlinear situations can spiral beyond our capacity to comprehend or predict, consider a game of chess: Chess is rule bound and the number of possible moves is limited, but it is interdependent—what happens to one piece changes the relationships between, and the behavior of, the others. Jonathan Schaeffer has calculated that there are 197,742 different ways for the players' first two turns to transpire. By the third move, the number of possibilities has risen to 121 million. Within twenty moves, it is more than likely that you are playing a game that has never been played before. Nobody knows exactly how many games of chess potentially exist because, according to Schaeffer, the figure "is so huge that no one will invest the effort to calculate the exact number." A small change at the start of a chess game—say, moving a pawn to A3 instead of A4—can lead to a completely different result, just as the flapping of one of Lorenz's butterflies might create huge, nonlinear havoc down the line. A reductionist instruction card would be useless for playing chess—the interactions generate too many possibilities."

— from *Team of Teams: New Rules of Engagement for a Complex World* by General Stanley McChrystal, Tantum Collins, David Silverman, Chris Fussell

SPORTS NUT

How Hard Is It to Create the St. Louis Rams Schedule?

So hard that the team should be getting it exactly right.

By BEN BLATT

Predicting everything

The probabilities above, based on many simulations, account for everything the Rams require. We multiply all those chances together.

Perfect schedule continues

10:14 p.m. ET April 17, 2019 | Updated 10:14 p.m. ET April 17, 2019

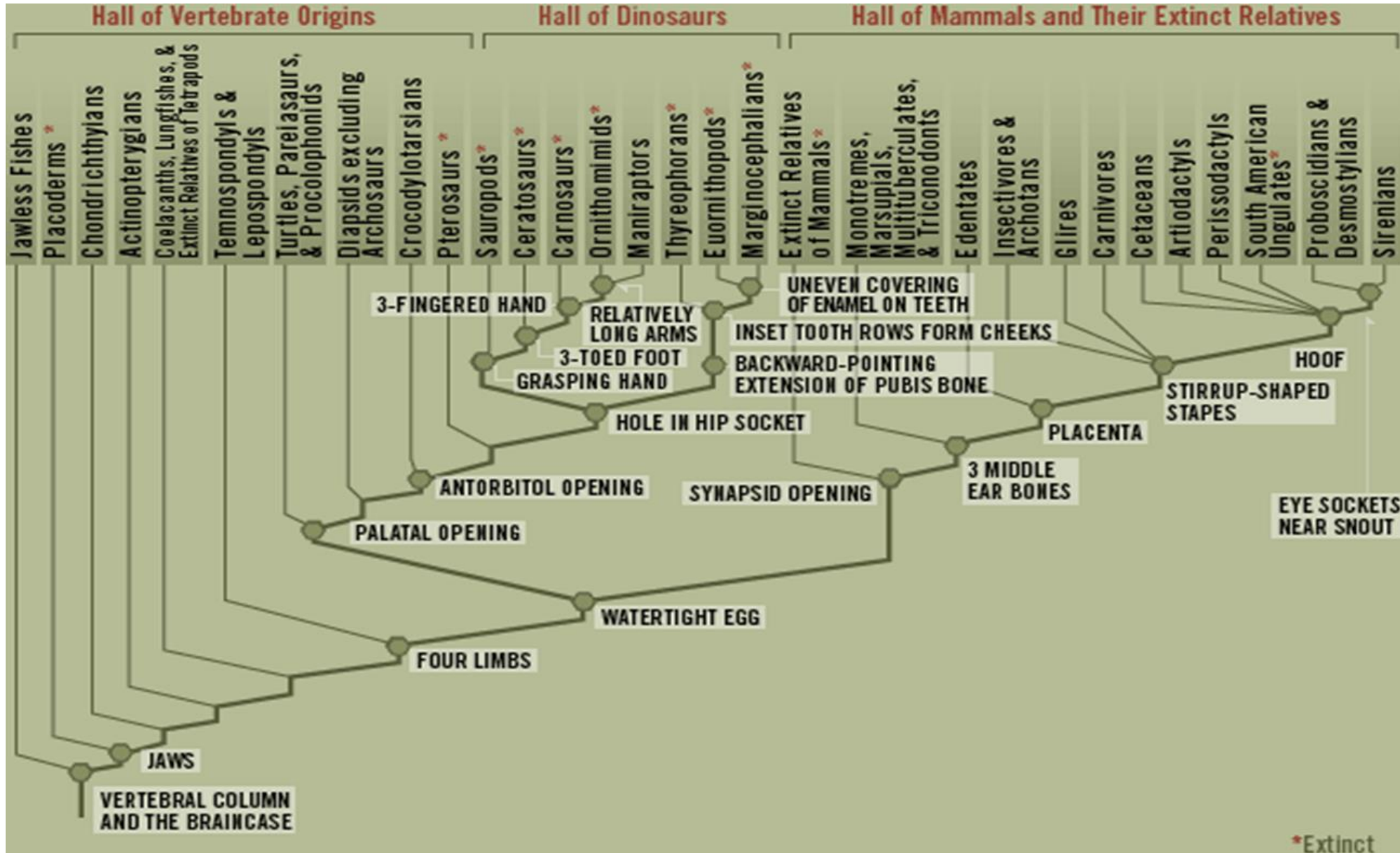
... is a crusade that may be infinitely more difficult than

... nential permutations to the league's 256-game regular season schedule revealed tonight — than there are atoms in the

... oned about 15 years ago from a manual process to a fully automated one, has enlisted outside help to optimize the process.

... al thing I've ever done," Dr. Mark Karwan, a professor at the University at Buffalo, told USA TODAY Sports.

EVOLUTION CLADOGRAM



2019 NFL PLAYING SCHEDULE

STADIUM CONFLICTS

	DAL	NYG	PHL	WAS	CHI	DET	GB	MIN	ATL	CAR	NO	TB	ARZ	LAR	SF	SEA	BUF	MIA	NE	NYJ	BAL	CIN	CLE	PIT	HOU	IND	JAX	TEN	DEN	KC	OAK	LAC		
1			■											■							■	■	■	■	■	■	■	■	■	■	■	■	■	9/8
2			■		■						■			■		■					■	■	■	■	■	■	■	■	■	■	■	■	■	9/15
3											■			■		■					■	■	■	■	■	■	■	■	■	■	■	■	■	9/22
4		■	■							■						■			■	■	■	■	■	■	■	■	■	■	■	■	■	■	■	9/29
5			■					■	■							■					■	■	■	■	■	■	■	■	■	■	■	■	■	10/6
6					■																					■				■			10/13	
7														■					■					■								■	10/20	
8			■													■							■	■		■							10/27	
9														■		■										■	■						11/3	
10								■			■	■				■																■	11/10	
11																■							■	■	■	■	■							11/17
12					■									■												■	■						11/24	
13											■																						12/1	
14	■								■	■					■											■				■			12/8	
15			■								■														■	■	■						12/15	
16	■																																12/22	
17	■								■																								12/29	

- Over 100 potential conflicts (some partial, some full week)
- Conflicts examples: MLB regular season and postseason, MLS, NCAA football, High School football, golf tournaments, concerts, trade shows, conventions, etc.

PARTIAL LIST OF 2019 RULES & CONSTRAINTS

Teams playing in London home or close the week prior, on BYE (or home?) the week after

Two teams must play Thursday of Week 14 after playing Thanksgiving Day

No team plays more than two road games against team coming off their BYE

No team plays consecutive road games involving cross-country trips unless requested

All teams playing road Thursday games are home the previous week

All teams playing home Thursday games have limited travel the previous week

Teams can travel no more than 2 time zones for a Thursday game

No team has earliest BYE in consecutive seasons

Manage 3-game road trips (and 3-game home stands for teams with ticket issues)

Minimize number of teams playing road game after road MNF

Minimize number of division series that end in first half of season

Minimize number of division series that are played less than 3 weeks apart

Minimize number of teams that play two consecutive road games to start or end season

Maximize number of late-season division games

Minimize early-season 1pm games for teams with weather concerns

CBS/FOX have at least three 1pm games every week, preferably geographically diverse

CBS/FOX have at least five total games, preferably six or more when doubleheader network

CBS and FOX shouldn't "lose" their key teams or an entire division all on same weekend

SCHEDULE INEQUITIES

	3-game Road Trip	2-away To Start	2-away To Finish	3-of-last-4 On Road	Road after Road MNF
Arizona Cardinals	2011	2017	2016	2016	2009
Atlanta Falcons	2017	2007	2018	2018	2017
Baltimore Ravens	2018	2015	2016	2016	2015
Buffalo Bills	2015	2006	2017	2014	2015
Carolina Panthers	2011	2001	2010	2003	2012
Chicago Bears	2008	2008	2018	2017	2015
Cincinnati Bengals	2017	2016	2018	2018	2006
Cleveland Browns	2011	1986	2017	2013	1990
Dallas Cowboys	2006	2012	2010	2017	2015
Denver Broncos	2017	2003	2013	1997	2017
Detroit Lions	2000	2015	2014	2018	1971
Green Bay Packers	2016	2016	2004	2017	2007
Houston Texans	2012	2018	Never	2013	2017
Indianapolis Colts	2011	2004	2014	2014	2009
Jacksonville Jaguars	2015	2014	2018	2018	2008
Kansas City Chiefs	2000	2018	2009	2013	2015
Los Angeles Rams	2018	2009	2015	2012	2001
Los Angeles Chargers	2003	1997	2015	2015	1983
Miami Dolphins	2015	2016	2008	2008	2002
Minnesota Vikings	2017	2013	2010	2002	2004
New England Patriots	2017	2014	2015	2015	2017
New Orleans Saints	2018	2014	1996	2016	1993
New York Giants	2009	2001	2016	2010	2016
New York Jets	2011	2017	1993	2017	1987
Oakland Raiders	1993	2011	2017	2017	2017
Philadelphia Eagles	2017	2017	2014	2018	1991
Pittsburgh Steelers	2010	2001	2015	2015	2003
San Francisco 49ers	2017	1997	2011	2011	2014
Seattle Seahawks	2009	2018	1996	2003	2000
Tampa Bay Buccaneers	2017	2016	2013	2011	2008
Tennessee Titans	2013	2015	2010	2015	2007
Washington Redskins	2016	2012	2015	2015	2014



SCHEDULE INEQUITIES

	3-game Road Trip	2-away To Start	2-away To Finish	3-of-last-4 On Road	Road after Road MNF
Arizona Cardinals	2011	2017	2016	2016	2009
Atlanta Falcons	2017	2007	2018	2018	2017
Baltimore Ravens	2018	2015	2016	2016	2015
Buffalo Bills	2015	2006	2017	2014	2015
Carolina Panthers	2011	2001	2010	2003	2012
Chicago Bears	2008	2008	2018	2017	2015
Cincinnati Bengals	2017	2016	2018	2018	2006
Cleveland Browns	2011	1986	2017	2013	1990
Dallas Cowboys	2006	2012	2010	2017	2015
Denver Broncos	2017	2003	2013	1997	2017
Detroit Lions	2000	2015	2014	2018	1971
Green Bay Packers	2016	2016	2004	2017	2007
Houston Texans	2012	2018	Never	2013	2017
Indianapolis Colts	2011	2004	2014	2014	2009
Jacksonville Jaguars	2015	2014	2018	2018	2008
Kansas City Chiefs	2000	2018	2009	2013	2015
Los Angeles Rams	2018	2009	2015	2012	2001
Los Angeles Chargers	2003	1997	2015	2015	1983
Miami Dolphins	2015	2016	2008	2008	2002
Minnesota Vikings	2017	2013	2010	2002	2004
New England Patriots	2017	2014	2015	2015	2017
New Orleans Saints	2018	2014	1996	2016	1993
New York Giants	2009	2001	2016	2010	2016
New York Jets	2011	2017	1993	2017	1987
Oakland Raiders	1993	2011	2017	2017	2017
Philadelphia Eagles	2017	2017	2014	2018	1991
Pittsburgh Steelers	2010	2001	2015	2015	2003
San Francisco 49ers	2017	1997	2011	2011	2014
Seattle Seahawks	2009	2018	1996	2003	2000
Tampa Bay Buccaneers	2017	2016	2013	2011	2008
Tennessee Titans	2013	2015	2010	2015	2007
Washington Redskins	2016	2012	2015	2015	2014



PRIMETIME GAMES

	DAL	NYG	PHI	WAS	CHI	DET	GB	MIN	ATL	CAR	NO	TB	ARZ	LAR	SF	SEA	BUF	MIA	NE	NYJ	BAL	CIN	CLE	PIT	HOU	IND	JAC	TEN	DEN	KC	OAK	LAC		
1 - Sep 05					GB		CHI												PIT					NE		JAC	IND		OAK		DEN			
2 - Sep 12	NO	PHI	NYG							TB	DAL	CAR																						
3 - Sep 19														CLE			TEN					PIT	LAR	CIN				BUF						
4 - Sep 26			ATL				MIN	GB	PHI																				KC	DEN				
5 - Oct 03														SEA		LAR						CLE		NYJ			KC				IND			
6 - Oct 10		NE									IND								NYG					LAC		NO						PIT		
7 - Oct 17	MIN		GB	NE			PHI	DAL											WAS															
8 - Oct 24					DEN		KC						SF		ARZ													CHI	GB					
9 - Oct 31	NYG	DAL																	BAL		NE		PIT	CLE										
10 - Nov 07	PHI		DAL			GB	DET																								LAC	OAK		
11 - Nov 14				MIN	LAR			WAS						CHI																LAC		KC		
12 - Nov 21			SEA											BAL		PHI						LAR			IND	HOU								
13 - Nov 28					DET	CHI	SEA	NO		ATL					MIN				HOU						NE									
14 - Dec 05	CHI				DAL			LAC											PIT					MIA									MIN	
15 - Dec 12											HOU			SEA		LAR					BAL	NYJ			NO									
16 - Dec 19					KC																									CHI				
17 - Dec 29																																		



PRIMETIME GAMES

	DAL	NYG	PHI	WAS	CHI	DET	GB	MIN	ATL	CAR	NO	TB	ARZ	LAR	SF	SEA	BUF	MIA	NE	NYJ	BAL	CIN	CLE	PIT	HOU	IND	JAC	TEN	DEN	KC	OAK	LAC		
1 - Sep 05					GB		CHI												PIT				NE		JAC	IND		OAK			DEN			
2 - Sep 12	NO									TB	DAL	CAR								CLE			NYJ											
3 - Sep 19				GB			WAS							CLE			TEN					LAR						BUF						
4 - Sep 26			ATL						PHI												PIT		CIN					KC	DEN					
5 - Oct 03											HOU			SEA		LAR									NO	KC				IND				
6 - Oct 10		NE						SEA								MIN			NYG				LAC										PIT	
7 - Oct 17	MIN		GB				PHI	DAL									NE		BUF															
▶ 8 - Oct 24	NYG	DAL						KC					SF		ARZ																GB			
9 - Oct 31					DEN													BAL		NE		PIT	CLE					CHI						
10 - Nov 07			SEA													PHI		PIT				MIA										LAC	OAK	
11 - Nov 14				MIN	LAR			WAS						CHI																LAC		KC		
12 - Nov 21	PHI		DAL				MIN	GB																IND	HOU									
13 - Nov 28					DET	CHI			NO		ATL					CLE		HOU				SEA		NE										
14 - Dec 05	CHI	PHI	NYG		DAL			LAC																										MIN
15 - Dec 12											IND			SEA	LAR					BAL	NYJ					NO								
16 - Dec 19					KC									BAL								LAR									CHI			
17 - Dec 29																																		



PRIMETIME GAMES

	DAL	NYG	PHI	WAS	CHI	DET	GB	MIN	ATL	CAR	NO	TB	ARZ	LAR	SF	SEA	BUF	MIA	NE	NYJ	BAL	CIN	CLE	PIT	HOU	IND	JAC	TEN	DEN	KC	OAK	LAC			
1 - Sep 05					GB		CHI										CLE		PIT				BUF	NE				OAK		DEN					
2 - Sep 12	NO	PHI	NYG							TB	DAL	CAR																							
3 - Sep 19														CLE				PIT					LAR	MIA		TEN	JAC								
4 - Sep 26			ATL				MIN	GB	PHI																				KC	DEN					
5 - Oct 03														SEA		LAR					CLE		NYJ			KC				IND					
6 - Oct 10		NE									IND								NYG					LAC		NO							PIT		
7 - Oct 17	MIN		GB	NE			PHI	DAL										WAS																	
8 - Oct 24					DEN		KC													BAL	NYJ								CHI	GB					
9 - Oct 31	NYG	DAL	SEA													PHI																			
10 - Nov 07							SEA									MIN		BAL		NE											LAC	OAK			
11 - Nov 14					LAR								SF	CHI	ARZ														LAC		KC				
12 - Nov 21	PHI		DAL	GB			WAS																		IND	HOU									
13 - Nov 28					DET	CHI			NO		ATL					BAL		HOU		SEA					NE										
14 - Dec 05	CHI				DAL									SEA	LAR						PIT		CIN												
15 - Dec 12				MIN	KC			WAS			HOU														NO				CHI						
16 - Dec 19								LAC						SF	LAR																		MIN		
17 - Dec 29																																			



PRIMETIME GAMES

	DAL	NYG	PHI	WAS	CHI	DET	GB	MIN	ATL	CAR	NO	TB	ARZ	LAR	SF	SEA	BUF	MIA	NE	NYJ	BAL	CIN	CLE	PIT	HOU	IND	JAC	TEN	DEN	KC	OAK	LAC			
1 - Sep 05					GB		CHI				HOU								PIT					NE	NO				OAK		DEN				
2 - Sep 12	NO	PHI	NYG								DAL						TEN											BUF							
3 - Sep 19										TB		CAR		CLE									LAR			JAC	IND								
4 - Sep 26			ATL						PHI													PIT		CIN					KC	DEN					
5 - Oct 03		NE																	NYG	CLE			NYJ	LAC									PIT		
6 - Oct 10			GB	NE			PHI							SEA		LAR			WAS																
7 - Oct 17	PHI		DAL					SEA								MIN										IND	HOU								
8 - Oct 24					DEN		KC														BAL	NYJ							CHI	GB					
9 - Oct 31	NYG	DAL																			BAL		NE		PIT	CLE									
10 - Nov 07					KC		CAR			GB																				CHI	LAC	OAK			
11 - Nov 14			SEA	MIN				WAS																						LAC			KC		
12 - Nov 21	MIN							DAL					SF	BAL	ARZ											LAR									
13 - Nov 28					DET	CHI			NO		ATL												CLE		HOU			SEA		NE					
14 - Dec 05	CHI				DAL		MIN	GB																								KC		IND	
15 - Dec 12								LAC			IND				SEA	LAR																		MIN	
16 - Dec 19					LAR																														
17 - Dec 29																																			



PRIMETIME GAMES

	DAL	NYG	PHI	WAS	CHI	DET	GB	MIN	ATL	CAR	NO	TB	ARZ	LAR	SF	SEA	BUF	MIA	NE	NYJ	BAL	CIN	CLE	PIT	HOU	IND	JAC	TEN	DEN	KC	OAK	LAC	
1 - Sep 05					GB		CHI				HOU								PIT					NE	NO				OAK		DEN		
2 - Sep 12	NO					GB	DET			TB	DAL	CAR																					
3 - Sep 19														CLE				PIT					LAR	MIA			TEN	JAC					
4 - Sep 26			ATL					SEA	PHI						MIN														KC	DEN			
5 - Oct 03		NE																	NYG	CLE			NYJ	LAC								PIT	
6 - Oct 10		BUF	GB				PHI							SEA		LAR	NYG																
7 - Oct 17	PHI		DAL	NE															WAS						IND	HOU							
8 - Oct 24					DEN		KC													BAL	NYJ							CHI	GB				
9 - Oct 31	NYG	DAL																	BAL		NE		PIT	CLE									
10 - Nov 07					KC																	PIT		CIN					CHI	LAC	OAK		
11 - Nov 14			SEA	MIN				WAS								PHI													LAC		KC		
12 - Nov 21	MIN						DAL						SF	BAL	ARZ							LAR											
13 - Nov 28			WAS	PHI	DET	CHI			NO		ATL								HOU						NE								
14 - Dec 05	CHI				DAL		MIN	GB																		KC			IND				
15 - Dec 12							LAC				IND			SEA	LAR											NO						MIN	
16 - Dec 19					LAR									CHI		CLE							SEA										
17 - Dec 29																																	



PRIMETIME GAMES

	DAL	NYG	PHI	WAS	CHI	DET	GB	MIN	ATL	CAR	NO	TB	ARZ	LAR	SF	SEA	BUF	MIA	NE	NYJ	BAL	CIN	CLE	PIT	HOU	IND	JAC	TEN	DEN	KC	OAK	LAC		
1 - Sep 05					GB		CHI				HOU								PIT					NE	NO				OAK		DEN			
2 - Sep 12			ATL						PHI	TB		CAR				CLE						SEA												
3 - Sep 19		BUF												CLE			NYG					LAR				TEN	JAC							
4 - Sep 26	NO		GB				PHI				DAL							PIT					MIA											
5 - Oct 03														SEA		LAR						CLE		NYJ			KC				IND			
6 - Oct 10		NE									IND								NYG					LAC		NO							PIT	
7 - Oct 17	PHI		DAL				MIN	GB																					KC	DEN				
▶ 8 - Oct 24	WAS			DAL			KC													BAL	NYJ											GB		
9 - Oct 31					DEN														BAL		NE		PIT	CLE					CHI					
10 - Nov 07					KC		CAR			GB			SF		ARZ																	CHI		
11 - Nov 14				MIN					WAS					SEA	LAR																LAC		KC	
12 - Nov 21	MIN										DAL											PIT		CIN	IND	HOU								
13 - Nov 28		PHI	NYG		DET	CHI				NO		ATL									HOU					NE								
14 - Dec 05	CHI		SEA		DAL											PHI			NYJ	NE														
15 - Dec 12					LAR						SEA				CHI	MIN																LAC	OAK	
16 - Dec 19														BAL																				MIN
17 - Dec 29																																		



PRIMETIME GAMES

	DAL	NYG	PHI	WAS	CHI	DET	GB	MIN	ATL	CAR	NO	TB	ARZ	LAR	SF	SEA	BUF	MIA	NE	NYJ	BAL	CIN	CLE	PIT	HOU	IND	JAC	TEN	DEN	KC	OAK	LAC			
1 - Sep 05					GB		CHI				IND								PIT				NE		NO			OAK		DEN					
2 - Sep 12			ATL	CHI	WAS				PHI	TB		CAR																							
3 - Sep 19														SF	LAR										KC	TEN	JAC		IND						
4 - Sep 26	NO		GB				PHI				DAL					BAL					SEA														
5 - Oct 03		NE				GB	DET							CLE					NYG				LAR												
6 - Oct 10																	CLE						BUF	LAC				KC	DEN			PIT			
7 - Oct 17	MIN							DAL											NYJ	NE					IND	HOU									
8 - Oct 24							KC	SEA					SF		ARZ	MIN														GB					
9 - Oct 31	NYG	DAL																	BAL		NE		PIT	CLE											
10 - Nov 07					LAR									CHI				PIT					MIA							LAC	OAK				
11 - Nov 14	PHI		DAL	MIN				WAS																						LAC		KC			
12 - Nov 21														SEA		LAR			HOU	CLE			NYJ		NE										
13 - Nov 28			SEA		DET	CHI			NO		ATL					PHI						PIT		CIN											
14 - Dec 05	CHI	PHI	NYG		DAL			LAC																									MIN		
15 - Dec 12					KC						HOU										BAL	NYJ			NO					CHI					
16 - Dec 19							MIN	GB						SEA		LAR																			
17 - Dec 29																																			



CLOUD COMPUTING

The image displays four instances of the GSS-Controller interface, arranged in a 2x2 grid. Each instance shows the status of a distributed solving job. The interface includes a 'Job Control' section with buttons for Start, Stop, Refresh, Load, and Send. It also displays 'Solver Results' and 'CutOff Control' settings. A 'Total Solve Time' is shown in a large digital display. Below these controls is a 'Solvers Log' table with columns for IP Address, Cores, Speed, S.Ran, Infeas, CutOff, Sol, BB, B.Sol, Seeds, S.Sol, RT, and Message.

Top-Left Window (IP: 18.233.87.50): Total Solve Time: 06:42:04. Best: 999999.9. Last: 0.0.

Top-Right Window (IP: 32.200.13.181): Total Solve Time: 06:49:39. Best: 3954.0. Last: 3954.0.

Bottom-Left Window (IP: 1.93.100.33): Total Solve Time: 07:08:54. Best: 3950.0. Last: 3950.0.

Bottom-Right Window (IP: 3.206.135.70): Total Solve Time: 06:41:38. Best: 3941.0. Last: 3941.0.

Bottom-Right Window (IP: 3.206.138.242): Total Solve Time: 06:32:17. Best: 3875.0. Last: 3875.0.



SCHEDULING PARTNERS

Optimal Planning Solutions

Gurobi Optimization

University at Buffalo

George Mason University

Washington University in St. Louis

Recentive Analytics

XIJ Analytics

2020 FINAL SCHEDULE

	DAL	NYG	PHI	WAS	CHI	DET	GB	MIN	ATL	CAR	NO	TB	ARZ	LAR	SF	SEA	BUF	MIA	NE	NYJ	BAL	CIN	CLE	PIT	HOU	IND	JAC	TEN	DEN	KC	OAK	LAC
1	NYG	DAL	WAS	PHI	GB	ARZ	CHI	ATL	MIN	LAR	HOU	SF	DET	CAR	TB	CIN	NYJ	BAL	PIT	BUF	MIA	SEA	TEN	NE	NO	LAC	KC	CLE	OAK	JAC	DEN	IND
2	WAS	BUF	ATL	DAL	DEN	LAC	MIN	GB	PHI	TB	LAR	CAR	BAL	NO	CIN	PIT	NYG	NE	MIA	CLE	ARZ	SF	NYJ	SEA	JAC	TEN	HOU	IND	CHI	OAK	KC	DET
3	MIA	TB	DET	CHI	WAS	PHI	DEN	OAK	IND	ARZ	SEA	NYG	CAR	CLE	PIT	NO	CIN	DAL	NYJ	NE	KC	BUF	LAR	SF	LAC	ATL	TEN	JAC	GB	BAL	MIN	HOU
4	NO	WAS	GB	NYG	MIN	KC	PHI	CHI	TEN	HOU	DAL	LAR	SEA	TB		ARZ	NE	LAC	BUF		CLE	PIT	BAL	CIN	CAR	OAK	DEN	ATL	JAC	DET	IND	MIA
5	GB	MIN	NYJ	NE	OAK		DAL	NYG	HOU	JAC	TB	NO	CIN	SEA	CLE	LAR	TEN		WAS	PHI	PIT	ARZ	SF	BAL	ATL	KC	CAR	BUF	LAC	IND	CHI	DEN
6	NYJ	NE	MIN	MIA		GB	DET	PHI	ARZ	TB	JAC	CAR	ATL	SF	LAR	CLE		WAS	NYG	DAL	CIN	BAL	SEA	LAC	KC		NO	DEN	TEN	HOU		PIT
7	PHI	ARZ	DAL	SF	NO	MIN	OAK	DET	LAR		CHI		NYG	ATL	WAS	BAL	MIA	BUF	NYJ	NE	SEA	JAC			IND	HOU	CIN	LAC	KC	DEN	GB	TEN
8		DET	BUF	MIN	LAC	NYG	KC	WAS	SEA	SF	ARZ	TEN	NO	CIN	CAR	ATL	PHI	PIT	CLE	JAC		LAR	NE	MIA	OAK	DEN	NYJ	TB	IND	GB	HOU	CHI
9	NYG	DAL	CHI	BUF	PHI	OAK	LAC	KC		TEN		SEA	SF		ARZ	TB	WAS	NYJ	BAL	MIA	NE		DEN	IND	JAC	PIT	HOU	CAR	CLE	MIN	DET	GB
10	MIN	NYJ			DET	CHI	CAR	DAL	NO	GB	ATL	ARZ	TB	PIT	SEA	SF	CLE	IND		NYG	CIN	BAL	BUF	LAR		MIA		KC		TEN	LAC	OAK
11	DET		NE	NYJ	LAR	DAL		DEN	CAR	ATL	TB	NO	SF	CHI	ARZ		MIA	BUF	PHI	WAS	HOU	OAK	PIT	CLE	BAL	JAC	IND		MIN	LAC	CIN	KC
12	NE	CHI	SEA	DET	NYG	WAS	SF		TB	NO	CAR	ATL		BAL	GB	PHI	DEN	CLE	DAL	OAK	LAR	PIT	MIA	CIN	IND	HOU	TEN	JAC	BUF		NYJ	
13	BUF	GB	MIA	CAR	DET	CHI	NYG	SEA	NO	WAS	ATL	JAC	LAR	ARZ	BAL	MIN	DAL	PHI	HOU	CIN	SF	NYJ	PIT	CLE	NE	TEN	TB	IND	LAC	OAK	KC	DEN
14	CHI	PHI	NYG	GB	DAL	MIN	WAS	DET	CAR	ATL	SF	IND	PIT	SEA	NO	LAR	BAL	NYJ	KC	MIA	BUF	CLE	CIN	ARZ	DEN	TB	LAC	OAK	HOU	NE	TEN	JAC
15	LAR	MIA	WAS	PHI	GB	TB	CHI	LAC	SF	SEA	IND	DET	CLE	DAL	ATL	CAR	PIT	NYG	CIN	BAL	NYJ	NE	ARZ	BUF	TEN	NO	OAK	HOU	KC	DEN	JAC	MIN
16	PHI	WAS	DAL	NYG	KC	DEN	MIN	GB	JAC	IND	TEN	HOU	SEA	SF	LAR	ARZ	NE	CIN	BUF	PIT	CLE	MIA	BAL	NYJ	TB	CAR	ATL	NO	DET	CHI	LAC	OAK
17	WAS	PHI	NYG	DAL	MIN	GB	DET	CHI	TB	NO	CAR	ATL	LAR	ARZ	SEA	SF	NYJ	NE	MIA	BUF	PIT	CLE	CIN	BAL	TEN	JAC	IND	HOU	OAK	LAC	DEN	KC