

# Crosby® Lifting Clamps



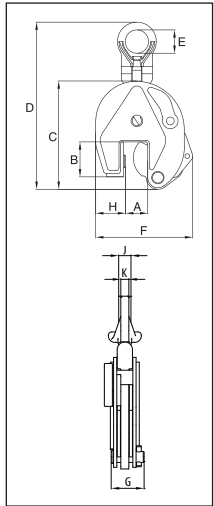
Crosby  
Lifting Clamps

# Vertical Clamps

## IPU10



The IPU10 vertical lifting clamp is used for the lifting, turning, moving or vertical transfer of sheet, plates, or fabrications from horizontal to vertical and down to horizontal (180°) as needed. The hinged hoisting eye allows for the clamp to place and lift the load from any direction, or with a multiple leg sling without side-loading the clamp.



## Universal - For Lifting in any Direction

- Available in capacities of .5 thru 30 metric tons (Higher Working Load Limits are available upon request).
- Wide variety of jaw openings available: 0 to 155mm.
- Welded alloy steel body for strength and smaller size. Forged alloy components, where required.
- Individually Proof Tested to 2 times the Working Load Limit with certification.
- Company name (CrosbyIP), logo, Working Load Limit and jaw opening permanently stamped on body.
- Each product is individually serialized, with the serial number and Proof Load test date stamped on body. Serial number is included on the test certificate with maintenance and warranty logbook.
- Available in a variety of styles:
  - IPU10 - Standard clamp for materials with a surface hardness to 37Rc (345HB).
  - IPU10J - Larger jaw opening.
  - IPU10S - For use with Stainless Steel material.
  - IPU10H - For use with materials with a surface hardness to 47Rc (450HB).
- Full 180° turning range for material transfer, turning or moving.
- Lock open, lock closed ability with latch for pretension on material and then release of material.
- Optional IP-5000 Stinger assembly available (see page 402). Allows for easy connection between the clamp and hoist hook.
- Minimum WLL of 10% of Maximum WLL.
- Maintenance replacement kits are available.
- Manufactured by a ISO 9001 facility.
- All sizes are **RFID EQUIPPED**.

## IPU10S



**IPU10S:** For use on Stainless Steel material.  
**IPU10H:** For use on materials with a surface hardness to 47Rc (450 HB).

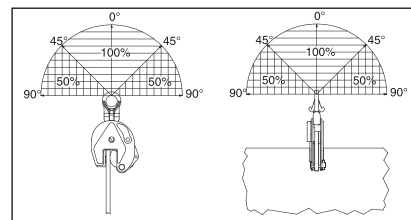
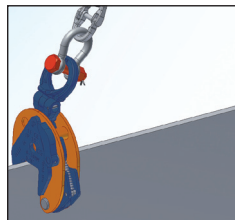


**Load Rated**

### Model IPU10

Model	Working Load Limit (t)*	IPU10 Stock No.	Weight Each (kg.)	Dimensions (mm)									
				Jaw A	B	C	D	E	F	G	H	J	K
IPU10	0.5	2701675	1.9	0 - 16	44	128	228	40	115	41	28	-	11
IPU10	1	2701663	2.4	0 - 20	45	139	222	40	126	41	38	-	11
IPU10	2	2701677	8.5	0 - 35	78	201	372	70	190	61	55	-	16
IPU10	3	2701665	14.8	0 - 40	100	253	445	75	225	78	60	-	20
IPU10	4.5	2701667	16.0	0 - 40	100	253	445	75	232	82	65	-	20
IPU10	6	2701669	24.0	0 - 50	126	302	525	80	292	84	95	44	20
IPU10/J	6	2702469	30.5	50 - 100	126	302	525	80	342	84	95	44	20
IPU10	9	2701671	29.5	0 - 50	126	325	557	80	310	92	105	44	20
IPU10/J	9	2701673	30.5	50 - 100	126	325	562	80	360	92	105	44	20
IPU10	12	2701679	57.0	0 - 54	160	391	623	80	331	117	137	41	25
IPU10/J	12	2701681	59.0	54 - 108	178	439	673	80	415	117	137	41	25
IPU10	16	2701683	72.0	5 - 64	178	465	734	88	397	119	153	45	25
IPU10/J	16	2701685	85.0	64 - 128	208	521	790	88	472	119	161	45	25
IPU10	22.5	2701687	127	5 - 80	222	554	855	110	470	136	186	49	25
IPU10/J	22.5	2701689	130	80 - 155	253	628	930	110	575	136	196	49	25
IPU10	30	2701691	153	5 - 80	222	545	860	110	470	152	186	54	30
IPU10/J	30	2701693	165	80 - 155	250	620	935	110	565	152	196	54	30
<b>For stainless steel - with universal hoisting eye</b>													
IPU10/S	0.5	2702275	1.9	0 - 16	44	128	228	40	115	41	28	-	11
IPU10/S	1	2702263	2.1	0 - 20	45	139	222	40	126	41	38	-	11
IPU10/S	2	2702277	7.6	0 - 35	78	201	372	70	190	61	55	-	16
IPU10/S	3	2702265	14.8	0 - 40	100	253	445	75	225	78	60	-	20
IPU10/S	4.5	2702267	16.0	0 - 40	100	253	445	75	232	82	65	-	20
IPU10/S	6	2702269	24.0	0 - 50	126	302	525	80	292	84	95	44	20
IPU10/S	9	2702271	29.5	0 - 50	126	325	557	80	310	92	105	44	20
IPU10/S	12	2702279	30.5	0 - 54	160	391	623	80	331	117	137	41	25
<b>For very hard materials - with universal hoisting eye</b>													
IPU10/H	0.5	2702175	1.9	0 - 16	44	128	228	40	115	41	28	-	11
IPU10/H	1	2702177	7.6	0 - 35	78	201	372	70	190	61	55	-	16
IPU10/H	2	2702165	14.8	0 - 40	100	253	445	75	225	78	60	-	20
IPU10/H	3	2702167	16.0	0 - 40	100	253	445	75	232	82	65	-	20
IPU10/H	4.5	2702169	24.0	0 - 50	126	302	525	80	292	84	95	44	20
IPU10/H	6	2702171	29.5	0 - 50	126	325	557	80	310	92	105	44	20

\* Design Factor based on EN 13155 and ASME B30.20.

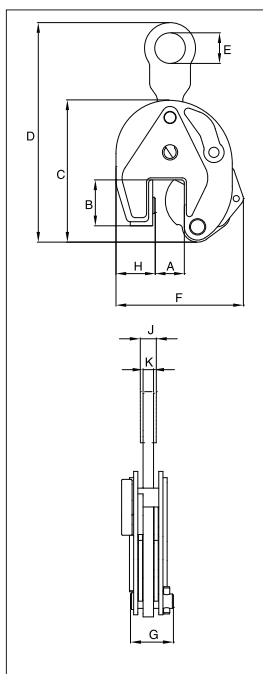


# Vertical Clamps

## IP10



The IP10 vertical lifting clamp is used for the lifting, turning, moving or vertical transfer of sheet, plates, or fabrications from horizontal to vertical and down to horizontal (180°) as needed. Usually used as a single point pick or when used with a spreader beam with multiple vertical drop lines.



## For Vertical Lifting, Turning and Transfer

- Available in capacities of .5 thru 30 metric tons (Higher Working Load Limits are available upon request).
- Wide variety of jaw openings available: 0 to 155mm.
- Welded alloy steel body for strength and smaller size. Forged alloy components, where required.
- Individually Proof Tested to 2 times the Working Load Limit with certification.
- Company name (CrosbyIP), logo, Working Load Limit and jaw opening permanently stamped on body.
- Each product is individually serialized, with the serial number and Proof Load test date stamped on body. Serial number is included on the test certificate with maintenance and warranty logbook.
- Available in a variety of styles:
  - IP10 - Standard clamp for materials with a surface hardness to 37Rc (345 HB).
  - IP10J - Larger jaw opening.
  - IP10S - For use with Stainless Steel material.
  - IP10H - For use with materials with a surface hardness to 47Rc (450 HB).
- Full 180° turning range for material transfer, turning or moving.
- Lock open, lock closed ability with latch for pretension on material and then release of material.
- Optional IP-5000 Stinger assembly available (see page 402). Allows for easy connection between the clamp and hoist hook.
- Minimum WLL of 10% of Maximum WLL.
- Maintenance replacement kits are available.
- Manufactured by a ISO 9001 facility.
- All sizes are **RFID EQUIPPED**.

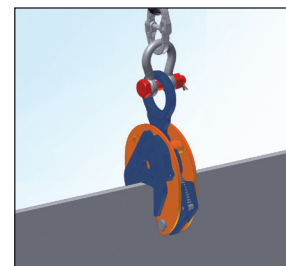
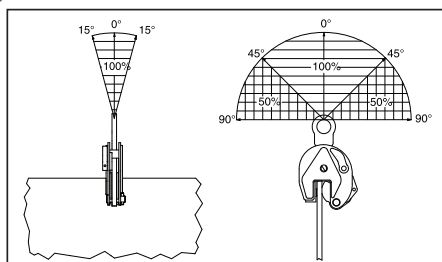


**Load Rated**

### Model IP10

Model	Working Load Limit (t)*	IP10 Stock No.	Weight Each (kg.)	Dimensions (mm)									
				Jaw A	B	C	D	E	F	G	H	J	K
IP10	0.5	2701674	1.8	0 - 16	44	128	207	30	115	41	28	-	10
IP10	1	2701662	2.2	0 - 20	45	139	215	30	126	41	38	-	10
IP10	2	2701676	7.6	0 - 35	78	201	336	70	190	61	55	-	16
IP10	3	2701664	13.8	0 - 40	100	253	436	75	225	78	60	-	20
IP10	4.5	2701666	15.0	0 - 40	100	253	436	75	232	82	65	-	20
IP10	6	2701668	23.5	0 - 50	126	302	515	80	292	84	95	40	20
IP10/J	6	2701705	28.5	50 - 100	126	302	515	80	342	84	95	40	20
IP10	9	2701670	27.5	0 - 50	126	325	550	80	310	92	105	44	25
IP10/J	9	2701672	28.5	50 - 100	126	325	555	80	360	92	105	44	25
IP10	12	2701678	49.0	0 - 54	160	391	580	80	331	117	137	41	25
IP10/J	12	2701680	58.0	54 - 108	178	439	630	80	415	117	137	41	25
IP10	16	2701682	68.0	5 - 64	178	465	690	88	397	119	153	49	25
IP10/J	16	2701684	90.0	64 - 128	208	521	746	88	472	119	161	49	25
IP10	22.5	2701686	108	5 - 80	222	554	800	110	470	136	186	49	25
IP10/J	22.5	2701688	110	80 - 155	253	628	880	110	575	136	196	49	25
IP10	30	2701690	148	5 - 80	222	545	800	110	470	152	186	54	30
IP10/J	30	2701692	152	80 - 155	250	620	880	110	565	152	196	54	30
<b>For stainless steel - with fixed hoisting eye</b>													
IP10/S	0.5	2702274	1.8	0 - 16	44	128	207	30	115	41	28	-	10
IP10/S	1	2702262	2.0	0 - 20	45	139	215	30	126	41	38	-	10
IP10/S	2	2702276	6.8	0 - 35	78	201	336	70	190	61	55	-	16
IP10/S	3	2702264	13.8	0 - 40	100	253	436	75	225	78	60	-	20
IP10/S	4.5	2702266	15.0	0 - 40	100	253	436	75	232	82	65	-	20
IP10/S	6	2702268	23.5	0 - 50	126	302	525	80	292	84	95	40	20
IP10/S	9	2702270	27.5	0 - 50	126	325	557	80	310	92	105	44	25
IP10/S	12	2702278	49.0	0 - 54	160	391	623	80	331	117	137	41	25
<b>For very hard materials - with fixed hoisting eye</b>													
IP10/H	0.5	2702174	1.8	0 - 16	44	128	207	30	115	41	28	-	10
IP10/H	1	2702176	6.8	0 - 35	78	201	336	70	190	61	55	-	10
IP10/H	2	2702164	13.8	0 - 40	100	253	436	75	225	78	60	-	16
IP10/H	3	2702166	15.0	0 - 40	100	253	436	75	232	82	65	-	20
IP10/H	4.5	2702168	23.5	0 - 50	126	302	515	80	292	84	95	40	20
IP10/H	6	2702170	27.5	0 - 50	126	325	550	80	310	92	105	44	25

\* Design Factor based on EN 13155 and ASME B30.20.





# Vertical Clamps

## IPNM10



The IPNM10 vertical lifting clamp is used for the lifting, turning, moving or vertical transfer of sheet, plates, or fabrications from horizontal to vertical and down to horizontal (180°) as needed without marring the surface of the material. Materials such as aluminum, stainless steel, painted materials, aircraft skins, composite material, glass, plastic, etc., can be lifted without marring.

Will NOT mar, or scratch the material surface.

For use in almost all sectors of industry where during the lift or transfer, no damage to the material is permitted.

- Available in capacities of .5, 1 and 2 metric tons.
- Wide variety of jaw openings available: 0 to 38mm.
- Welded alloy steel body for strength and smaller size. Forged alloy components, where required.
- Individually Proof Tested to 2 times the Working Load Limit with certification.
- Company name (CrosbyIP), logo, Working Load Limit and jaw opening permanently stamped on body.
- Each product is individually serialized, with the serial number and Proof Load test date stamped on body. Serial number is included on the test certificate with maintenance and warranty logbook.
- Full 180° turning range for material transfer, turning or moving.
- Lock open, lock closed ability with latch for pretension on material and then release of material.
- Optional IP-5000 Stinger assembly available (see page 402). Allows for easy connection between the clamp and hoist hook.
- Material must be clean and dry.
- Maintenance replacement kits are available.
- Manufactured by a ISO 9001 facility.
- All sizes are **RFID EQUIPPED**.

## IPNM10P

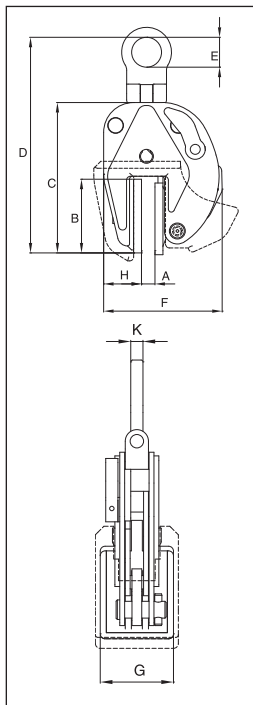


The IPNM10P vertical lifting clamp is used for the lifting, turning, moving or vertical transfer of sheet, plates, or fabrications from horizontal to vertical and down to horizontal (180°) as needed without marring the surface of the material. Materials such as aluminum, stainless steel, painted materials, aircraft skins, composite material, glass, plastic, etc., can be lifted without marring. The protective cover reduces the risk of damage to surrounding plates.

Will NOT mar, or scratch the material surface.



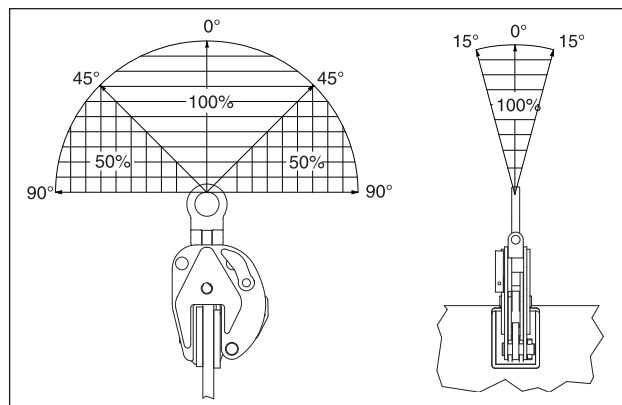
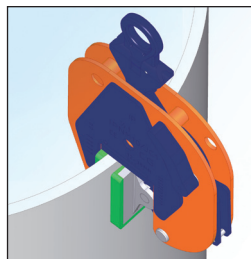
Load Rated



### Model IPNM10

Model	Working Load Limit (t)*	IPNM10 Stock No.	Weight Each (kg.)	Dimensions (mm)								
				Jaw A	B	C	D	E	F	G	H	K
IPNM10	.5	2703276	2.5	0 - 10	74	149	205	40	128	60	38	11
IPNM10/N	1	2703738	4.4	0 - 20	110	209	270	30	134	80	56	10
IPNM10	2	2703442	14.5	0 - 38	153	258	396	70	196	100	16	16
<b>With protection cap</b>												
IPNM10/P	.5	2703278	2.8	0 - 10	82	157	213	40	145	68	48	11
IPNM10/P	1	2703279	4.5	0 - 20	97	195	268	30	205	82	60	10
<b>With larger jaw opening &amp; curved jaw opening</b>												
IPNM10/J	1	2703312	5.5	20 - 37	86	196	265	30	177	80	51	10
IPNM10/JC	1	2703328	5.5	0 - 25	86	225	314	30	194	80	59	10

\* Design Factor based on EN 13155 and ASME B30.20.





# Horizontal Clamps

## IPHNM10



The IPHNM10 horizontal lifting clamps have a pretension feature that allows the user to attach the clamps to the material for horizontal lifting and transfer of non-sagging material. To be used where material surface must not be damaged. These clamps must be used in pairs or more.

## For Horizontal Lift and Transfer - with Pretension System

- Available in capacities of .5 thru 12 metric tons.
- Jaw openings available: 0 to 120mm.
- Welded alloy steel body for strength and smaller size. Forged alloy components, where required.
- Individually Proof Tested to 2 times the Working Load Limit with certification.
- Company name (CrosbyIP), logo, Working Load Limit and jaw opening permanently stamped on body.
- Each product is individually serialized, with the serial number and Proof Load test date stamped on body. Serial number is included on the test certificate with maintenance and warranty logbook.
- Maintenance replacement parts are available.
- Manufactured by a ISO 9001 facility.
- All sizes are **RFID EQUIPPED**.



**Load Rated**

## IPH10



The IPH10 horizontal lifting clamps with spring loaded tension have a pretension feature that allows the user to attach the clamps to the material for horizontal lifting and transfer of non-sagging material. These clamps must be used in pairs or more.

### Model IPHNM10

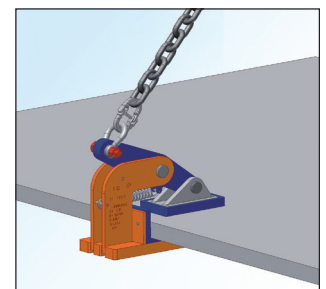
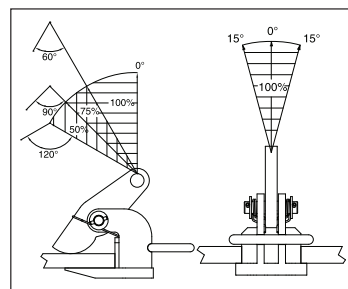
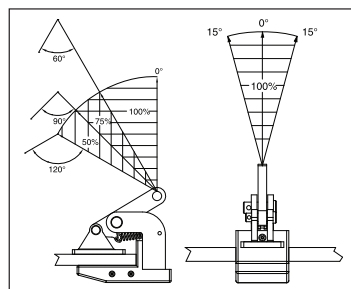
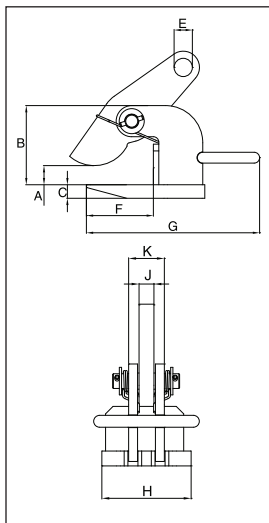
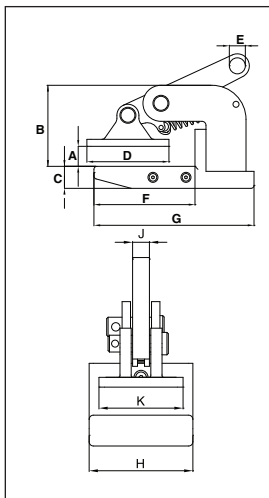
Model	Working Load Limit (Per Pair) (t)*	IPHNM10 Stock No.	Weight Each (kg.)	Dimensions (mm)									
				Jaw A	B	C	D	E	F	G	H	J	K
IPHNM10	.5	2703287	2.0	0 - 20	81	22	82	16	101	160	74	12	60
IPHNM10	1	2703288	3.5	0 - 35	93	30	92	16	103	164	74	12	60
IPHNM10	2	2703290	7.5	0 - 40	139	30	131	22	166	245	100	20	74
IPHNM10/J	2	2703291	8.0	30 - 60	169	30	131	22	166	245	100	20	74

\* Design Factor based on EN 13155 and ASME B30.20.

### Model IPH10 and IPH10/J: With Spring Loaded Tension, Magnets and Handle

Model	Working Load Limit (Per Pair) (t)*	IPH10 Stock No.	Weight Each (kg.)	Dimensions (mm)									
				Jaw A	B	C	E	F	G	H	J	K	
IPH10	.5+	2703297	1.8	0 - 20	86	12	16	103	150	60	12	27	
IPH10	1+	2703298	2.5	0 - 35	100	16	16	103	150	60	12	31	
IPH10	2	2703522	5.5	0 - 60	117	16	22	109	256	110	20	40	
IPH10	3	2703523	7.5	0 - 60	117	20	26	109	266	120	20	48	
IPH10	4.5	2703524	10.5	0 - 60	132	25	30	104	280	130	20	48	
IPH10	6	2703525	13.0	0 - 60	143	25	36	123	320	130	20	48	
IPH10	9	2703526	18.5	0 - 60	157	30	43	133	330	140	25	62	
IPH10	12	2703527	21.5	0 - 60	172	30	47	141	353	150	25	62	
<b>With larger jaw opening</b>													
IPH10/J	3	2703533	9.0	60 - 120	177	20	26	109	266	120	20	48	
IPH10/J	4.5	2703534	12.0	60 - 120	192	25	30	104	280	130	20	48	
IPH10/J	6	2703535	15.0	60 - 120	203	25	36	123	320	130	20	48	
IPH10/J	9	2703536	20.5	60 - 120	217	30	43	133	330	140	25	62	
IPH10/J	12	2703537	24.0	60 - 120	232	30	47	141	353	150	25	62	

\* Design Factor based on EN 13155 and ASME B30.20. + No handle or magnets.



# Horizontal Clamps

## IPHTONZ



The IPHTONZ / IPHSZ horizontal lifting clamps are for use in the lifting and transfer in horizontal position of non-sagging materials or of bundles of non-sagging material. These clamps must be used in pairs or more.

## For Horizontal Lifting and Transfer

- Available in capacities of .75 thru 25 metric tons.
- Wide variety of jaw openings available: 0 to 100mm.
- Welded alloy steel body for strength and smaller size. Forged alloy components, where required.
- Individually Proof Tested to 2 times the Working Load Limit with certification.
- Company name (CrosbyIP), logo, Working Load Limit and jaw opening permanently stamped on body.
- Each product is individually serialized, with the serial number and Proof Load test date stamped on body. Serial number is included on the test certificate with maintenance and warranty logbook.
- Maintenance replacement parts are available.
- Manufactured by a ISO 9001 facility.
- All sizes are **RFID EQUIPPED**.



Load Rated

## IPOHZ



The IPOHZ horizontal lifting clamp is to be used for lifting and transferring, in the horizontal position, of thin sheet and other materials that will sag or bend when lifted. These clamps must be used in pairs or more.

### Model IPHTONZ: Jaw opening range 0 to 60mm

Model	Working Load Limit (Per Pair) (t)*	IPHTONZ Stock No.	Weight Each (kg.)	Dimensions (mm)								
				Jaw A	B	C	E	F	G	H	J	K
IPHTONZ	0.75	2705343	2.0	0 - 30	75	16	16	64	118	81	12	46
IPHTONZ	1.5	2705344	4.5	0 - 60	114	16	22	87	153	110	16	52
IPHTONZ	3	2705477	7.0	0 - 60	117	20	26	87	163	120	20	69
IPHTONZ	4.5	2705483	10.0	0 - 60	132	25	30	87	183	130	20	69
IPHTONZ	6	2705484	12.5	0 - 60	143	25	36	96	213	130	20	69
IPHTONZ	9	2705485	15.5	0 - 60	157	30	43	110	223	140	25	86
IPHTONZ	12	2705486	20.5	0 - 60	172	30	47	120	254	150	25	88
IPHTONZ	15	2705487	27.0	0 - 60	183	30	47	130	284	200	25	88
IPHTONZ	25	2705119	39.0	0 - 60	169	40	47	170	300	220	32	113

\* Design Factor based on EN 13155 and ASME B30.20.

### Model IPHSZ: Jaw opening range 0 to 100mm

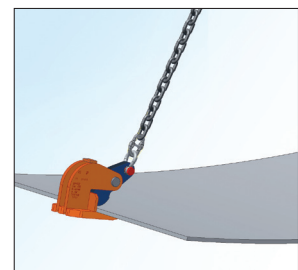
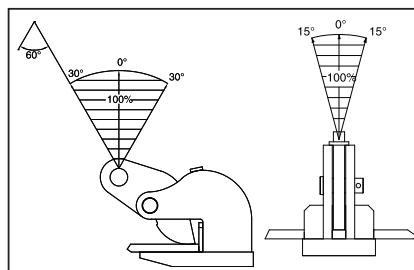
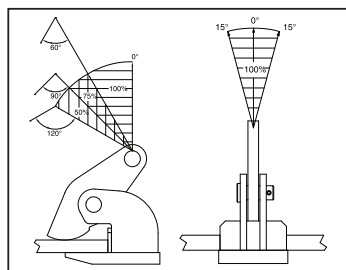
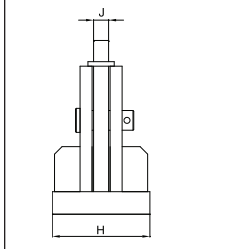
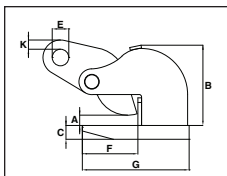
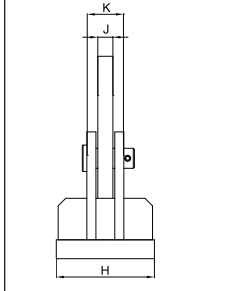
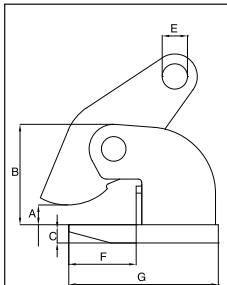
Model	Working Load Limit (Per Pair) (t)*	IPHSZ Stock No.	Weight Each (kg.)	Dimensions (mm)								
				Jaw A	B	C	E	F	G	H	J	K
IPHSZ	3	2705308	11.0	0 - 100	192	20	26	160	222	140	20	65
IPHSZ	6	2705311	18.2	0 - 100	200	25	32	160	249	180	20	69
IPHSZ	9	2705313	24.6	0 - 100	220	30	35	170	270	190	25	85
IPHSZ	12	2705318	31.4	0 - 100	220	35	47	170	270	200	25	95

\* Design Factor based on EN 13155 and ASME B30.20.

### Model IPOHZ: Jaw opening range 0 to 60mm

Model	Working Load Limit (Per Pair) (t)*	IPOHZ Stock No.	Weight Per Pair (kg.)	Dimensions (mm)								
				Jaw A	B	C	E	F	G	H	J	K
IPOHZ	0.75	2705401	3.0	0 - 30	94	16	16	70	118	81	12	12
IPOHZ	1.5	2705402	5.5	0 - 45	133	16	22	125	192	100	16	12
IPOHZ	3	2705403	8.0	0 - 45	137	20	26	125	200	120	20	10
IPOHZ	4.5	2705404	8.5	0 - 45	138	25	30	126	220	120	20	10
With larger jaw opening												
IPOHZ	6	2705405	15.5	0 - 60	171	30	36	135	235	130	20	20
IPOHZ	9	2705406	20.5	0 - 60	211	30	43	166	276	160	25	20
IPOHZ	12	2705407	38.0	0 - 60	217	40	47	168	294	190	25	19
IPOHZ	15	2705408	38.0	0 - 60	220	40	47	183	317	250	25	22

\* Design Factor based on EN 13155 and ASME B30.20.



# Horizontal Clamps

## IPBC



The IPBC horizontal lifting clamps have a pretension feature that allows the user to attach the clamps to the material for horizontal lifting and transfer of sagging and non-sagging material. These clamps may also be used to handle material that will be used in shears, bending and rolling machines or other fabrication equipment. May also be used for turning beams from the "H" into the "I" position.

## For Horizontal Transfer - with Pretension System

- Available in capacities of 1 thru 4.5 metric tons.
- Jaw openings available: 0 to 40mm.
- Welded alloy steel body for strength and smaller size. Forged alloy components, where required.
- Individually Proof Tested to 2 times the Working Load Limit with certification.
- Company name (CrosbyIP), logo, Working Load Limit and jaw opening permanently stamped on body.
- Each product is individually serialized, with the serial number and Proof Load test date stamped on body. Serial number is included on the test certificate with maintenance and warranty logbook.
- Maintenance replacement parts are available.
- Manufactured by a ISO 9001 facility.
- All sizes are **RFID EQUIPPED**.

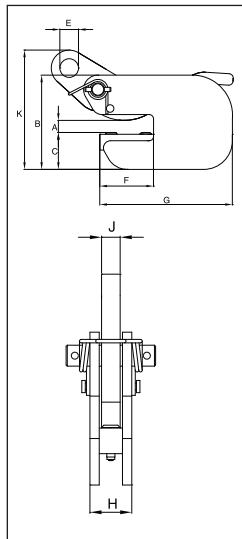
## IPHGZ



The IPHGZ, IPHGZ horizontal lifting clamps have a pretension locking feature that allows the user to attach the clamps to the material for horizontal lifting and transfer of sagging and non-sagging material. These clamps may also be used to handle material that will be used in shears, bending and rolling machines or other fabrication equipment. May also be used to move and lift structural shapes such as I-Beams, H-beams etc.



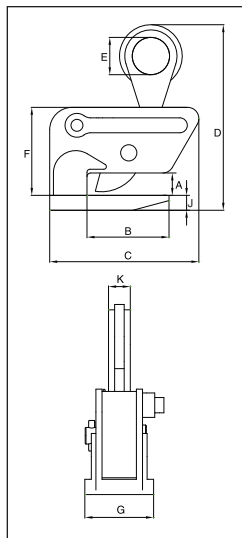
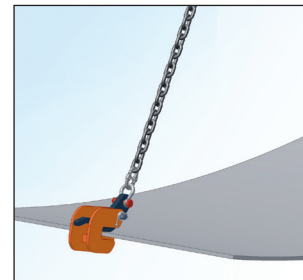
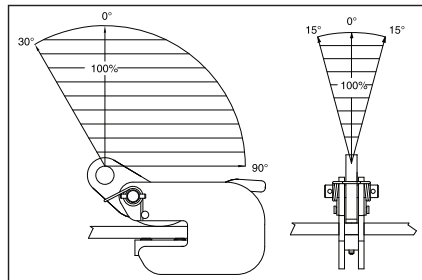
Load Rated™



### Model IPBC

Model	Working Load Limit (Per Pair) (t)*	IPBC Stock No.	Weight Each (kg.)	Dimensions (mm)								
				Jaw A	B	C	E	F	G	H	J	K
IPBC	1	2700410	3.5	0 - 20	132	52	26	75	185	36	16	182
IPBC	2	2700411	6.5	0 - 25	152	62	30	82	210	49	20	218
IPBC	3	2700412	8.5	0 - 25	157	66	30	82	210	57	20	225

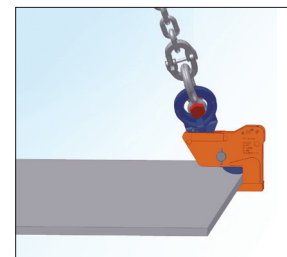
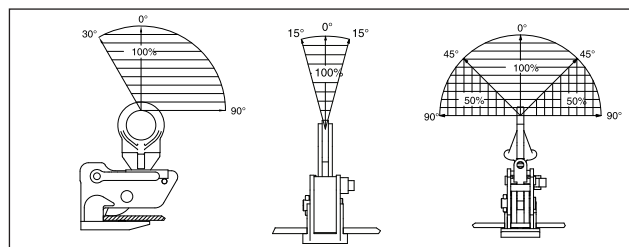
\* Design Factor based on EN 13155 and ASME B30.20.



### Model IPHGZ: Universal Lifting Eye Model IPHGZ: Fixed Hoisting Eye

Model	Working Load Limit (t)*	Stock No.	Weight Each (kg.)	Dimensions (mm)								
				Jaw A	B	C	D	E	F	G	J	K
IPHGZ	1.5	2705455	9.0	0 - 25	110	232	287	70	139	90	20	16
IPHGZ	3.0	2705456	19.9	0 - 40	119	253	348	75	175	120	25	20
IPHGZ	4.5	2705457	30.0	0 - 40	119	301	370	80	175	155	30	44
Fixed Hoisting Eye												
IPHGZ	.75	2705451	4.0	0 - 25	82	148	206	50	99	98	12	22
IPHGZ	1.5	2705452	7.3	0 - 25	110	200	250	50	118	90	20	28
IPHGZ	3.0	2705453	12.3	0 - 40	120	227	305	70	148	120	25	32
IPHGZ	4.5	2705454	25.0	0 - 40	120	284	381	70	181	155	30	40

\* Design Factor based on EN 13155 and ASME B30.20.





# Horizontal Clamps

## IPPE



The IPPE is suitable for the lifting and transfer of bundles of non-sagging steel plates in horizontal position. The jaw opening can be easily adjusted. Raising the handle opens the clamp. This facilitates the easy and quick placing or removing of the clamp.

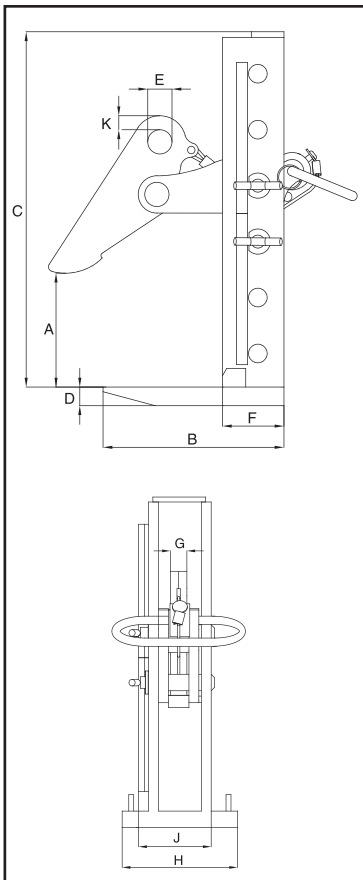
## For the Lifting and Transfer of Bundles of Plates

- Available in capacities of 3 thru 12 metric tons.
- Wide variety of jaw openings available: 0 to 420mm.
- Welded alloy steel body for strength and smaller size. Forged alloy components, where required.
- Individually Proof Tested to 2 times the Working Load Limit with certification.
- Company name (CrosbyIP), logo, Working Load Limit and jaw opening permanently stamped on body.
- Each product is individually serialized, with the serial number and Proof Load test date stamped on body. Serial number is included on the test certificate with maintenance and warranty logbook.
- Manufactured by a ISO 9001 facility.
- All sizes are **RFID EQUIPPED**.



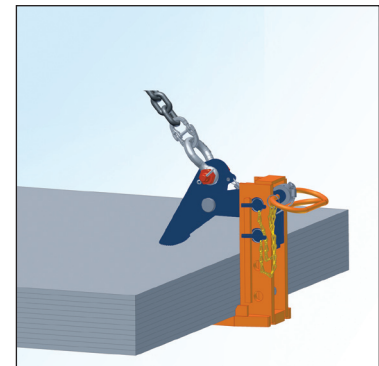
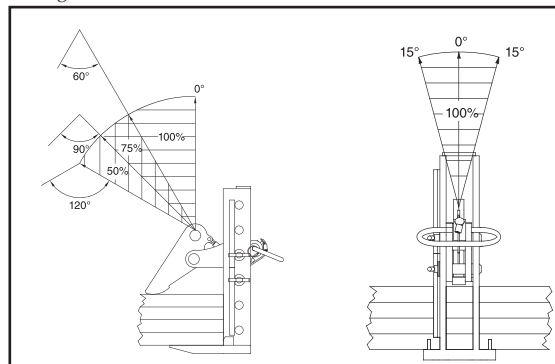
**Load Rated**

## Model IPPE



Model	IPPE Stock No.	Working Load Limit (Per Pair) (t)*	Weight Each (kg.)	Dimensions (mm)									
				Jaw A	B	C	D	E	F	G	H	J	K
3 IPPEB	2700501	3.0	10.5	0-180	194	256	20	26	66	20	140	76	15
3 IPPED	2700502	3.0	13.0	0-300	194	376	20	26	66	20	140	76	15
3 IPPEH	2700503	3.0	14.0	0-420	194	496	20	26	66	20	140	76	15
6 IPPEH	2700506	6.0	23.0	0-420	227	516	25	30	102	20	160	76	13
9 IPPEH	2700509	9.0	31.0	0-420	270	566	25	34	122	20	190	76	21
12 IPPEH	2700512	12.0	52.0	0-420	292	588	30	40	133	25	200	97	18

\* Design Factor based on EN 13155 and ASME B30.20.



# Beam Clamps

## IPBKZ



The IPBKZ beam clamp is used for lifting, transfer and stacking of I-Beams. An over-center hoist eye allows for the beam flange to remain vertical. This series of clamps can be used in the vertical and horizontal moving, transfer and stacking of different types of structural designs, such as I-Beams, angles, etc, depending on the application desired.

## For the Transfer and Stacking of Steel Beams

- Available in capacities of .75 thru 3.75 metric tons.
- Wide variety of jaw openings available: 0 to 28mm.
- Welded alloy steel body for strength and smaller size. Forged alloy components, where required.
- Individually Proof Tested to 2 times the Working Load Limit with certification.
- Company name (CrosbyIP), logo, Working Load Limit and jaw opening permanently stamped on body.
- Each product is individually serialized, with the serial number and Proof Load test date stamped on body. Serial number is included on the test certificate with maintenance and warranty logbook.
- Optional IP-5000 Stinger assembly available (see page 402). Allows for easy connection between the clamp and hoist hook.
- Minimum WLL of 10% of Maximum WLL.
- Maintenance replacement parts are available.
- Manufactured by a ISO 9001 facility.
- All sizes are **RFID EQUIPPED**.

## IPVUZ



The IPVZ / IPVUZ beam clamp is used for vertical lift and transfer of angle iron and other loads that have only a small gripping area for the clamp ("U" has universal hoisting eye).

This series of clamps can be used in the vertical and horizontal moving, transfer and stacking of different types of structural designs, such as I-Beams, H-beams, angles, etc, depending on the application desired.

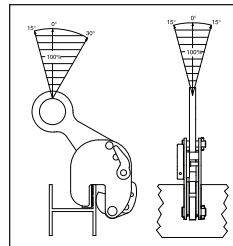
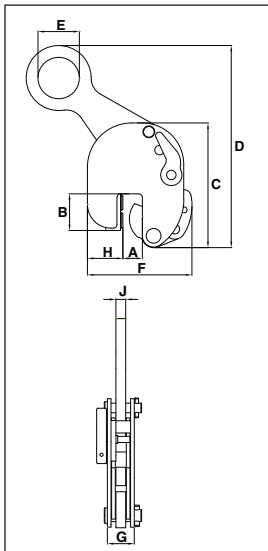


Load Rated

### Model IPBKZ

Model	Working Load Limit (t)*	IPBKZ Stock No.	Weight Each (kg.)	Dimensions (mm)								
				Jaw A	B	C	D	E	F	G	H	J
IPBKZ	.75	2705780	3.5	5 - 15	43	132	192	45	113	47	38	10
IPBKZ	1.5	2705781	7.0	5 - 25	62	210	300	70	163	61	50	16
IPBKZ	3.75	2705782	15.5	5 - 28	75	260	415	100	202	78	52	20

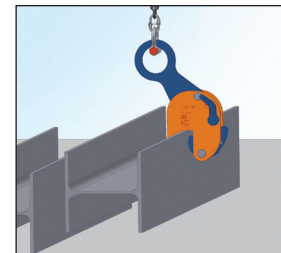
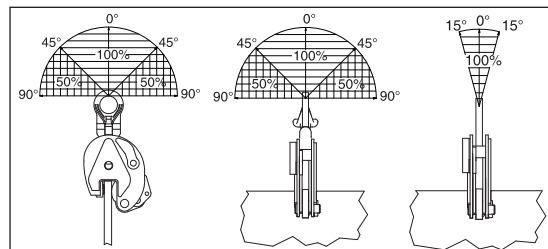
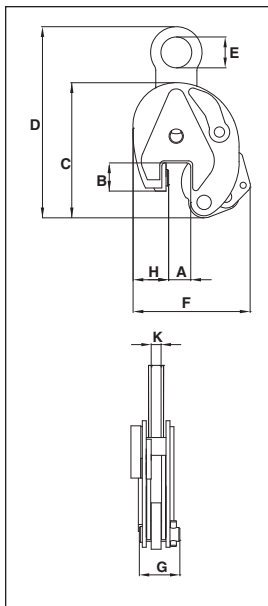
\* Design Factor based on EN 13155 and ASME B30.20.



### Model IPVUZ: Universal Hoisting Eye Model IPVZ: Fixed Hoisting Eye

Model	Working Load Limit (t)*	Stock No.	Weight Each (kg.)	Dimensions (mm)								
				Jaw A	B	C	D	E	F	G	H	K
IPVUZ	0.75	2705146	2.3	0 - 15	45	138	238	30	128	41	37	10
IPVUZ	1.5	2705147	8.9	0 - 20	78	201	378	70	200	61	72	16
Fixed Hoisting Eye												
IPVZ	0.75	2705096	2.1	0 - 15	26	128	207	30	115	41	30	10
IPVZ	1.5	2705097	6.2	0 - 20	60	200	339	70	180	52	50	16

\* Design Factor based on EN 13155 and ASME B30.20.



# Beam Clamps

## IPBHZ



The IPBHZ beam clamp is used for horizontal lifting and transfer of steel beams. The base is slotted to allow the clamps to be used from end of beams as well as from the flange. This series of clamps can be used in the vertical and horizontal moving, transfer and stacking of different types of structural designs, such as I-Beams, H-beams, angles, etc, depending on the application desired.

## For the Lifting and Transfer of Steel Beams

- Available in capacities of .75 thru 12 metric tons.
- Wide variety of jaw openings available: 0 to 50mm.
- Welded alloy steel body for strength and smaller size. Forged alloy components, where required.
- Individually Proof Tested to 2 times the Working Load Limit with certification.
- Company name (CrosbyIP), logo, Working Load Limit and jaw opening permanently stamped on body.
- Each product is individually serialized, with the serial number and Proof Load test date stamped on body. Serial number is included on the test certificate with maintenance and warranty logbook.
- Maintenance replacement parts are available.
- Manufactured by a ISO 9001 facility.
- All sizes are **RFID EQUIPPED**.

## IPBSNZ



The IPBSNZ beam clamp is used for lifting, transfer and stacking. Offset hoisting eye allows for level lifts of I-Beams, also for lifting fabrications and ship sections. This series of clamps can be used in the vertical and horizontal moving, transfer and stacking of different types of structural designs, such as I-Beams, depending on the application desired.

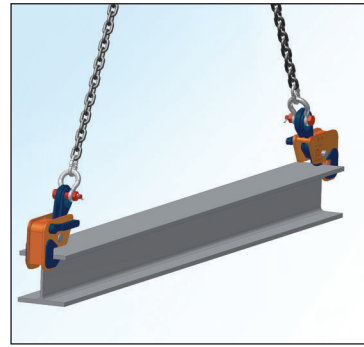
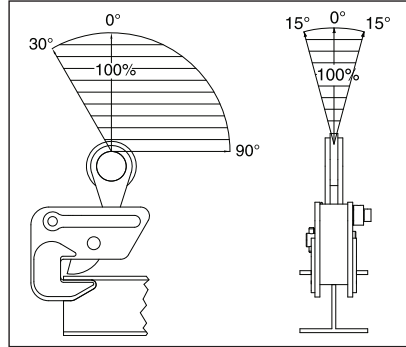
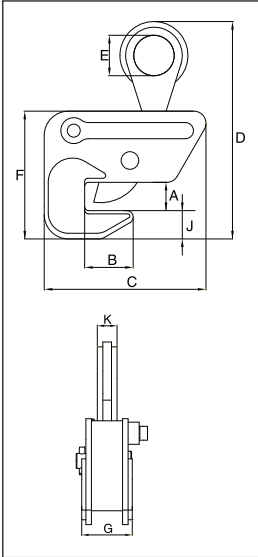


Load Rated®

### Model IPBHZ

Model	Working Load Limit (t)*	IPBHZ Stock No.	Weight Each (kg.)	Dimensions (mm)								
				Jaw A	B	C	D	E	F	G	J	K
IPBHZ	.75	2705461	3.0	0 - 25	40	148	220	50	130	69	33	22
IPBHZ	1.5	2705462	6.0	0 - 25	60	200	255	50	153	73	35	28
IPBHZ	3	2705463	10.5	0 - 40	80	227	325	70	188	112	38	32
IPBHZ	4.5	2705464	25.0	0 - 40	112	284	413	70	251	116	80	40
IPBHZ	12	2705467	42.0	0 - 40	125	466	490	90	317	90	90	47

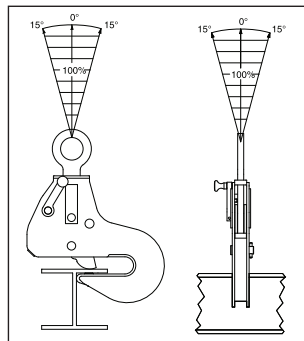
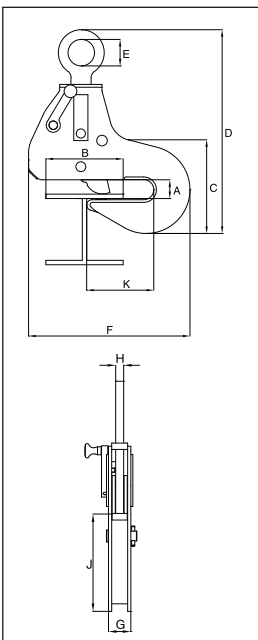
\* Design Factor based on EN 13155 and ASME B30.20.



### Model IPBSNZ

Model	Working Load Limit (t)*	IPBSNZ Stock No.	Weight Each (kg.)	Dimensions (mm)									
				Jaw A	B	C	D	E	F	G	H	J	K
IPBSNZ	1.5	2705925	14.0	0 - 32	100 - 270	304	480	70	319	47	16	165	148
IPBSNZ	3	2705926	22.0	0 - 40	100 - 330	352	494	75	408	56	20	207	182
IPBSNZ	4.5	2705927	30.5	0 - 50	100 - 360	420	630	75	457	56	20	250	188

\* Design Factor based on EN 13155 and ASME B30.20.





# Beam Clamps

## IPTK



This IPTK series beam clamp is suitable for use as a temporary tackle eye for a beam.

## For the Transfer of Steel Beams and Attachment of Tackle Eye

- Available in capacities of 2 thru 25 metric tons.
- Wide variety of jaw openings available: 75 to 1020mm.
- Welded alloy steel body for strength and smaller size. Forged alloy components, where required.
- Individually Proof Tested to 2 times the Working Load Limit with certification.
- Company name (CrosbyIP), logo, Working Load Limit and jaw opening permanently stamped on body.
- Each product is individually serialized, with the serial number and Proof Load test date stamped on body. Serial number is included on the test certificate with maintenance and warranty logbook.
- Maintenance replacement parts are available.
- Manufactured by a ISO 9001 facility.
- All sizes are **RFID EQUIPPED**.



**Load Rated**

### Model IPTK: With Hoisting Eye

### Model IPTKW: Without Hoisting Eye

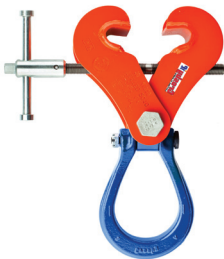
### Model IPTKU: With Hinged Hoisting Eye

## IPTKW



This IPTKW series beam clamp is suitable for use as a temporary tackle eye for a beam.

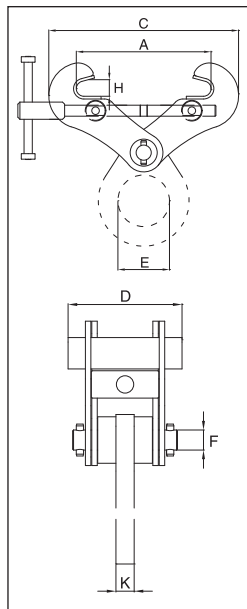
## IPTKU



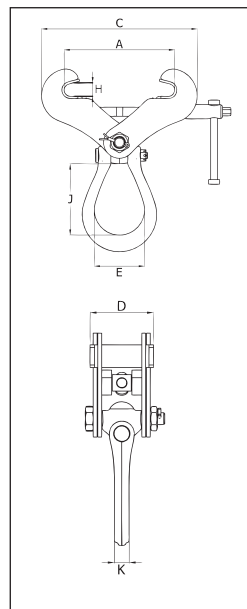
This IPTKU series beam clamp has an improved hinged hoisting eye that increases the loading angles and an optional new "Double Locking Device".

Model	Working Load Limit (t)*	Stock No.	Weight Each (kg.)	Dimensions (mm)							
				Jaw A	C	D	E	F	H	J	K
IPTK	2	2700996	6.0	75 - 190	A + 80	125	75	-	25	-	20
IPTK	3	2700997	6.5	75 - 190	A + 80	125	75	-	25	-	20
IPTK	4	2700998	8.5	150 - 280	A + 100	125	75	-	35	-	20
IPTK	5	2700994	11.0	120 - 350	A + 195	125	75	-	40	-	20
IPTK	10	2700970	31.0	300 - 500	A + 300	171	74	-	40	-	30
IPTK	25	2702999	225	450 - 1020	A + 220	500	125	-	76	-	45
<b>Without Hoisting Eye</b>											
IPTKW	2	2700966	4.0	75 - 190	A + 80	125	-	28	25	-	-
IPTKW	3	2700967	4.5	75 - 190	A + 80	125	-	28	25	-	-
IPTKW	4	2700968	6.3	150 - 280	A + 100	125	-	33	35	-	-
IPTKW	5	2700969	8.8	120 - 350	A + 195	125	-	33	40	-	-
<b>With Improved Hinged Hoisting Eye</b>											
IPTKU	2	2707996	5.8	75 - 190	A + 100	121	76	-	22	99	19
IPTKU	3	2707997	6.5	75 - 190	A + 100	121	89	-	22	122	22
IPTKU	4	2707998	9.9	120 - 280	A + 150	140	89	-	40	122	22
IPTKU	5	2707994	12.0	120 - 350	A + 175	140	89	-	40	122	22
IPTKU	10	2707970	38.0	200 - 460	A + 300	200	105	-	60	152	26
<b>With Optional Double Locking Device</b>											
IPTKU/D	2	2709996	5.8	75 - 190	A + 100	165	89	-	22	99	19
IPTKU/D	3	2709993	6.5	75 - 190	A + 100	165	89	-	22	122	22
IPTKU/D	4	2709995	9.9	120 - 280	A + 150	185	89	-	40	122	22
IPTKU/D	5	2709994	12.0	120 - 350	A + 175	185	89	-	40	122	22
IPTKU/D	10	2709970	38.0	200 - 460	A + 300	250	105	-	60	152	26

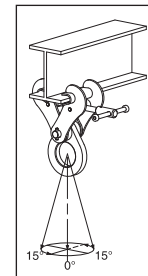
\* Design Factor based on EN 13155 and ASME B30.20.



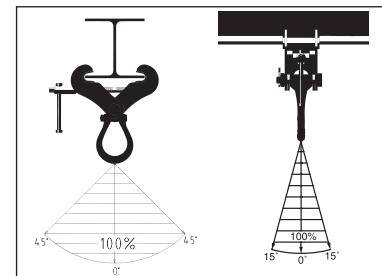
IPTK



IPTKU



IPTKW



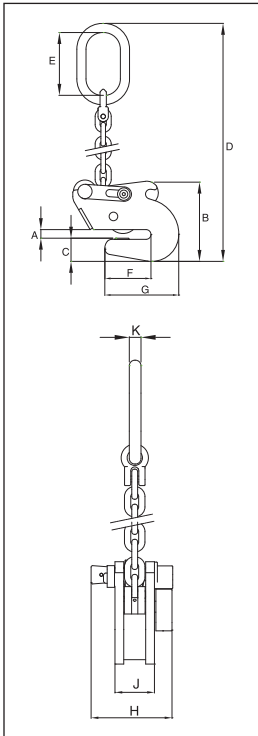
IPTKU

# Beam Clamps

## IPSTARTEC11



The IPSTARTEC11 beam clamp has been specially developed for lifting with the body in vertical position, controlled tilting, transportation and stacking of steel "H" and "I" profiles. By placing the chain guide in the appropriate position, it is easy to switch from lifting to tilting and back again, which shifts the center of gravity.



## For the Lifting and Transfer of Steel Beams

- Available in capacities of 1.5 and 2.5 metric tons.
- Jaw openings available: 6 to 20mm.
- Welded alloy steel body for strength and smaller size. Forged alloy components, where required.
- Individually Proof Tested to 2 times the Working Load Limit with certification.
- Company name (CrosbyIP), logo, Working Load Limit and jaw opening permanently stamped on body.
- Each product is individually serialized, with the serial number and Proof Load test date stamped on body. Serial number is included on the test certificate with maintenance and warranty logbook.
- Maintenance replacement parts are available.
- Manufactured by a ISO 9001 facility.
- All sizes are **RFID EQUIPPED**.

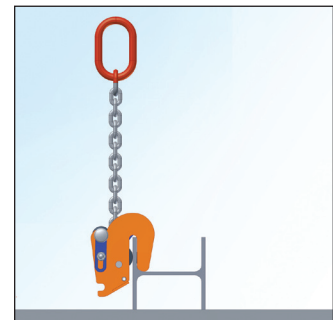
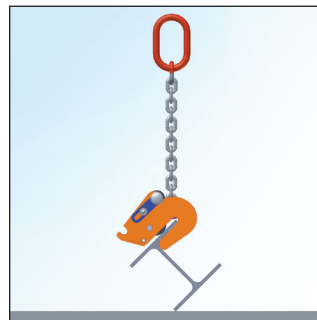
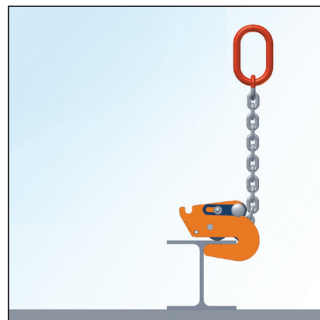
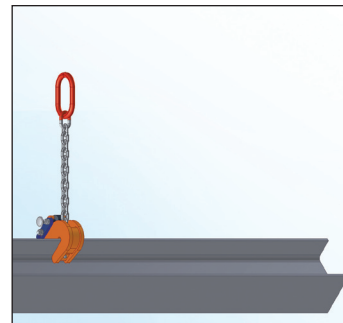
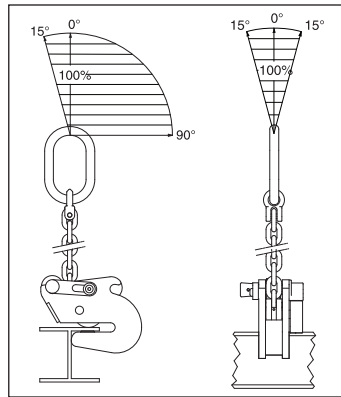


Load Rated

## Model IPSTARTEC11

Model	Working Load Limit (t)*	IPSTARTEC11 Stock No.	Weight Each (kg.)	Dimensions (mm)									
				Jaw A	B	C	D	E	F	G	H	J	K
IPSTARTEC11	1.5	2701812	6.6	6 - 12	140	39	575	110	81	129	54	126	16
IPSTARTEC11	2.5	2701822	14.5	6 - 20	210	55	725	135	115	182	74	140	18

\* Design Factor based on EN 13155 and ASME B30.20.



# Drum Clamps

## IPDV



The IPDV drum clamp is for vertical lift and transfer. Allows drum to remain in an upright position during the lift and transfer using one clamp.

## Designed to lift, move and transfer 50-55 gallon drums with steel tops

- Available in capacity of .5 metric tons.
- Jaw openings available: IPDV - 300mm IPVK - 17mm
- Welded alloy steel body for strength and smaller size. Forged alloy components, where required.
- Individually Proof Tested to 2 times the Working Load Limit with certification.
- Company name (CrosbyIP), logo, Working Load Limit and jaw opening permanently stamped on body.
- Each product is individually serialized, with the serial number and Proof Load test date stamped on body. Serial number is included on the test certificate with maintenance and warranty logbook.
- Maintenance replacement parts are available.
- Manufactured by a ISO 9001 facility.
- IPDV is **RFID EQUIPPED**.

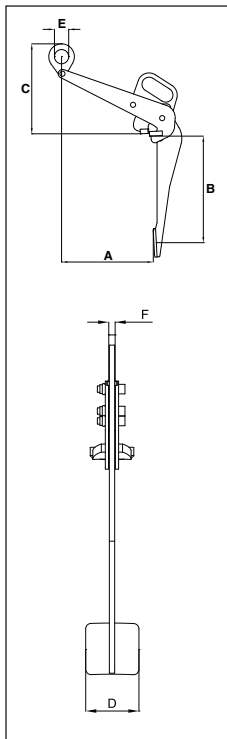


**Load Rated**

## IPVK



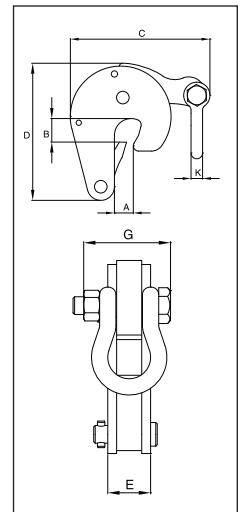
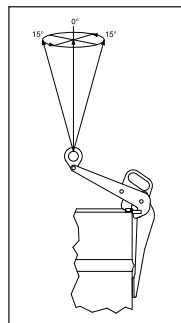
The IPVK drum clamp is for vertical lift and transfer. Automatically locks on drum, and can be used alone or in pairs.



### Model IPDV

Model	Working Load Limit (t)*	IPDV Stock No.	Weight Each (kg.)	Dimensions (mm)					
				Jaw A	B	C	D	E	F
IPDV	.5	2700118	7.1	300	375	290	150	50	12

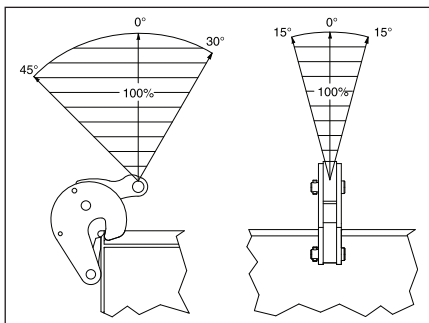
\* Design Factor based on EN 13155 and ASME B30.20.



### Model IPVK

Model	Working Load Limit (t)*	IPVK Stock No.	Weight Each (kg.)	Dimensions (mm)						
				Jaw A	B	C	D	E	G	K
IPVK	.5	2700116	1.6	17	26	26	132	29	51	11

\* Design Factor based on EN 13155 and ASME B30.20.





# Vertical Clamps

## IPCC



The IPCC is suitable for the vertical lifting and transfer of concrete pipe sections and wells. Very easy application and removal of the clamp thanks to the built-in carrying-grips. Normally used in combination with 7mm chain (not supplied). These clamps must be used in pairs or more.

## For the Lifting and Transfer of Concrete Pipe Sections and Wells

- Available in capacity of 1 metric tons.
- Jaw opening available: 40 to 140mm.
- Welded alloy steel body for strength and smaller size. Forged alloy components, where required.
- Individually Proof Tested to 2 times the Working Load Limit with certification.
- Company name (CrosbyIP), logo, Working Load Limit and jaw opening permanently stamped on body.
- Each product is individually serialized, with the serial number and Proof Load test date stamped on body. Serial number is included on the test certificate with maintenance and warranty logbook.
- Maintenance and replacement parts are available.
- Manufactured by a ISO 9001 facility.
- All sizes are **RFID EQUIPPED**.

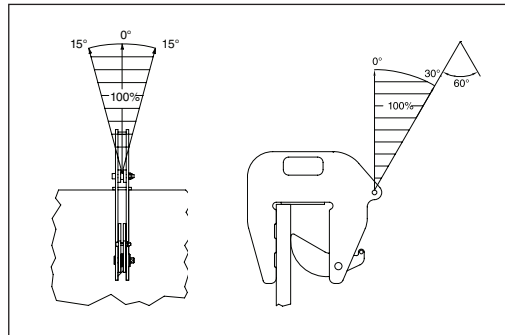
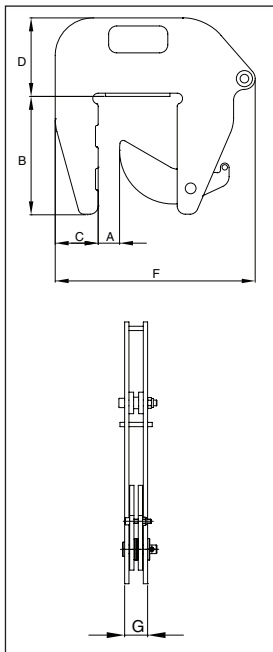


**Load Rated**

## Model IPCC

Model	IPCC Stock No.	Working Load Limit Per Pair (t.)*	Weight Each (kg.)	Dimensions (mm)									
				Jaw A	B	C	D	E	F	G	H	J	K
IPCC	2700037	1,0	9.2	40-140	225	80	146	-	372	37	-	-	-

\* Design Factor based on EN 13155 and ASME B30.20.

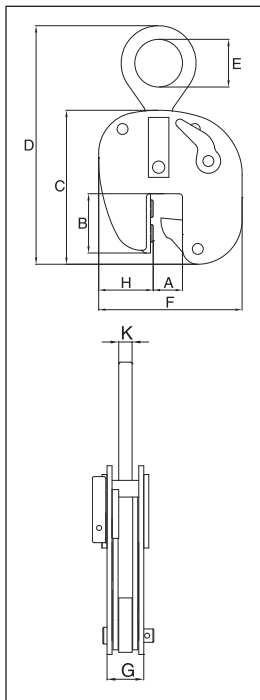


# Shipbuilding Clamps: Bulb Profiles

## IPBUZ



The IPBUZ shipbuilding clamps are used for the lifting, transfer and placing of bulb profiles onto ship's hulls perpendicularly. These clamps are fitted with a locking device for both open and closed positions, which ensures complete reliability. They are to be used exclusively for bulb profiles (not for plates).



## For the lifting, transfer and placing of Bulb Profiles onto Ship's Hulls Perpendicularly

- Available in capacities of .75 thru 3.75 metric tons.
- Jaw openings available: HP 120mm to HP 430mm.
- Welded alloy steel body for strength and smaller size. Forged alloy components, where required.
- Individually Proof Tested to 2 times the Working Load Limit with certification.
- Company name (CrosbyIP), logo, Working Load Limit and jaw opening permanently stamped on body.
- Each product is individually serialized, with the serial number and Proof Load test date stamped on body. Serial number is included on the test certificate with maintenance and warranty logbook.
- Optional IP-5000 Stinger assembly available (see page 402). Allows for easy connection between the clamp and hoist hook.
- Maintenance replacement parts are available.
- Manufactured by a ISO 9001 facility.
- All sizes are **RFID EQUIPPED**.

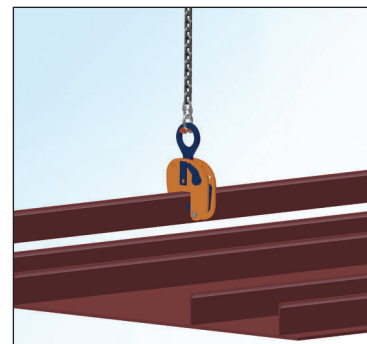
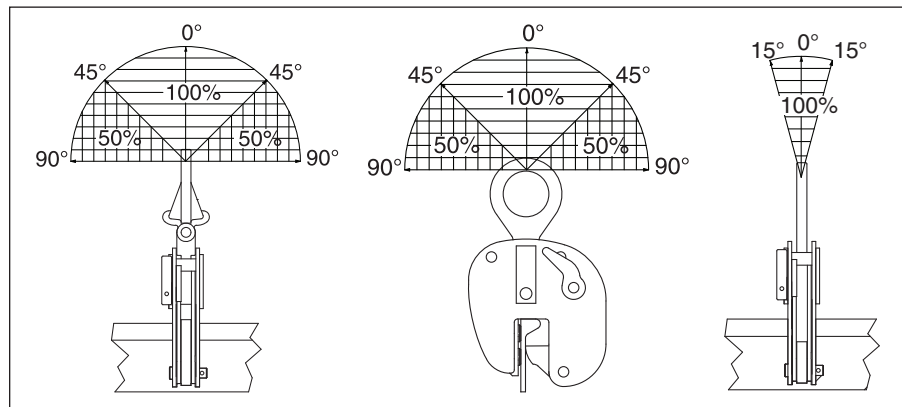


**Load Rated**

### Model IPBUUZ: with Universal Hoisting Eye Model IPBUZ: with Fixed Hoisting Eye

Model	Working Load Limit (t)*	Stock No.	Weight Each (kg.)	Dimensions (mm)								
				Jaw A	B	C	D	E	F	G	H	K
IPBUUZ	.75	2705601	8.5	HP 120-200	85	226	390	70	210	61	70	16
<b>With fixed hoisting eye</b>												
IPBUZ	.75	2705600	7.0	HP 120-200	85	226	390	70	210	61	70	16
IPBUZ	1.5	2705701	15.0	HP 220-430	196	397	568	70	256	69	48	16
IPBUZ	3.75	2705702	28.5	HP 220-430	238	438	565	80	355	64	100	20

\* Design Factor based on EN 13155 and ASME B30.20.

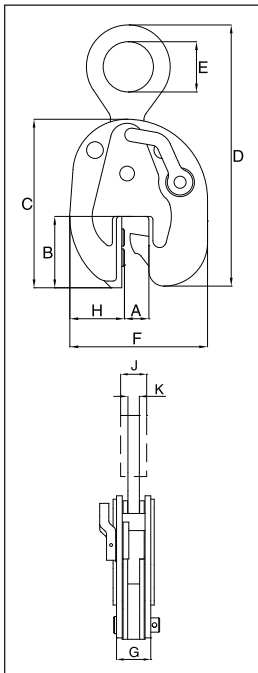


# Shipbuilding Clamps: Shipsections

## IPSBUUZ



The IPSBU(U)Z shipbuilding clamps are used for the lifting, transfer and placing of complete shipsections. These clamps are fitted with a locking device for both open and closed positions, which ensures complete reliability. They are to be used exclusively for bulb profiles (not for plates).



## For the lifting, transfer and placing of complete shipsections

- Available in capacities of 4.5 thru 22.50 metric tons.
- Wide variety of jaw openings available: HP 100mm to HP 430mm.
- Welded alloy steel body for strength and smaller size. Forged alloy components, where required.
- Individually Proof Tested to 2 times the Working Load Limit with certification.
- Company name (CrosbyIP), logo, Working Load Limit and jaw opening permanently stamped on body.
- Each product is individually serialized, with the serial number and Proof Load test date stamped on body. Serial number is included on the test certificate with maintenance and warranty logbook.
- Optional IP-5000 Stinger assembly available (see page 402). Allows for easy connection between the clamp and hoist hook.
- Maintenance replacement parts are available.
- Manufactured by a ISO 9001 facility.
- All sizes are **RFID EQUIPPED**.

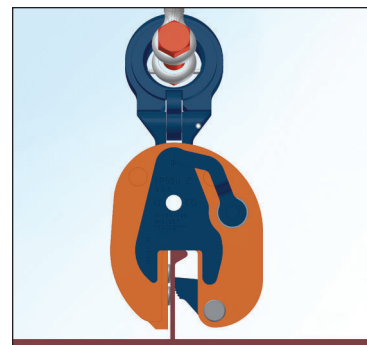
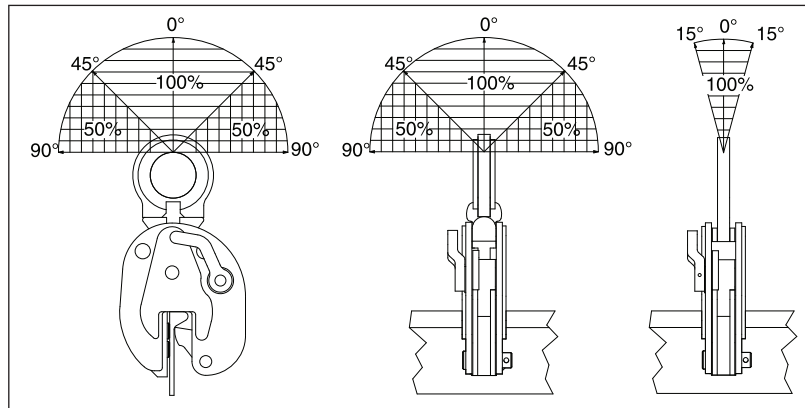


**Load Rated**

## Model IPSBUUZ and ISPBUSUZ: with Universal Hoisting Eye Model IPSBUZ and ISPBUSZ: with Fixed Hoisting Eye

Model	Working Load Limit (t)*	Stock No.	Weight Each (kg.)	Dimensions (mm)									
				Jaw A	B	C	D	E	F	G	H	J	K
IPSBUUZ	4.5	2705771	15.5	HP 100-160	107	252	450	75	206	96	82	36	20
ISPBUSUZ	4.5	2705772	38.0	HP 180-430	227	428	635	75	377	95	128	-	20
IPSBUUZ	9	2705773	43.0	HP 100-160	105	274	491	80	248	123	104	44	20
ISPBUSUZ	9	2705774	59.0	HP 180-430	227	478	718	80	425	118	155	44	25
<b>With fixed hoisting eye</b>													
IPSBUZ	4.5	2705721	13.5	HP 100-160	107	252	382	75	206	96	82	-	20
ISPBUSZ	4.5	2705722	35.8	HP 180-430	227	428	592	75	377	95	128	-	20
IPSBUZ	9	2705723	23.0	HP 100-160	105	274	461	80	248	123	104	-	30
ISPBUSZ	9	2705724	68.0	HP 180-430	227	478	672	80	425	118	155	45	25
IPSBUSZ	15	2705728	64.0	HP 180-430	226	485	690	88	401	100	135	49	25
IPSBUSZ	22.5	2705730	100	HP 180-430	224	543	740	90	470	116	185	-	30

\* Design Factor based on EN 13155 and ASME B30.20.

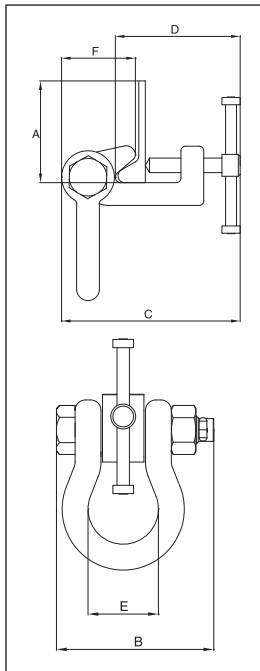


# Shipbuilding Clamps: Bulbprofiles

## IPBTO10



The IPBTO/10 shipbuilding clamp is used as a temporary tackle eye in spaces which have been reinforced with HP (bulb) profiles such as engine rooms and shipsections. This clamp is fitted with a screwed spindle for easy attachment of the clamp. The moment a load is applied, the clamp is automatically fixed.



For use as a temporary tackle eye in spaces which have been reinforced with HP (bulb) profiles such as engine rooms and shipsections.

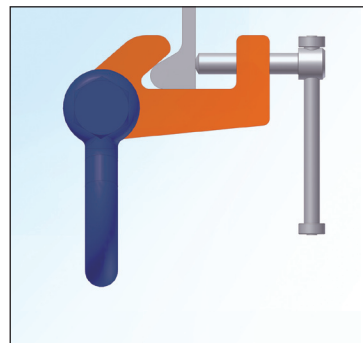
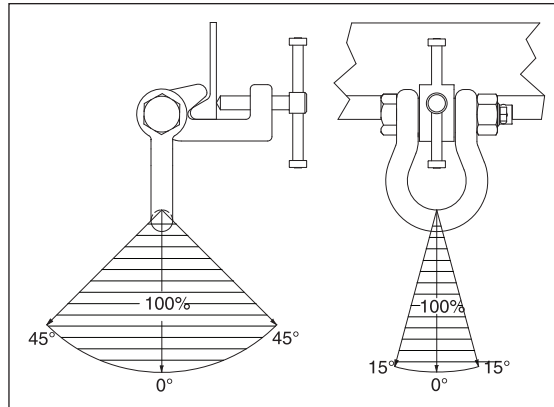
- Available in capacities of 1.5 thru 6 metric tons.
- Wide variety of jaw openings available: HP 160mm to HP 430mm.
- Welded alloy steel body for strength and smaller size. Forged alloy components, where required.
- Individually Proof Tested to 2 times the Working Load Limit with certification.
- Company name (CrosbyIP), logo, Working Load Limit and jaw opening permanently stamped on body.
- Each product is individually serialized, with the serial number and Proof Load test date stamped on body. Serial number is included on the test certificate with maintenance and warranty logbook.
- Maintenance replacement parts are available.
- Manufactured by a ISO 9001 facility.

**Load Rated®**

## Model IPBTO10

Model	Working Load Limit (t)*	IPBTO10 Stock No.	Weight Each (kg.)	Dimensions (mm)					
				Jaw A	B	C	D	E	F
IPBTO10	1.5	2700980	4.3	HP 160-240	137	188-209	129-150	68	81
IPBTO10	3	2700986	6.0	HP 240-320	137	188-217	145-174	68	78
IPBTO10	6	2700991	13.0	HP 300-430	185	255-297	195-236	98	102

\* Design Factor based on EN 13155 and ASME B30.20.





# Crosby® IP Clamps – Misc.

## IPSC



The IPSC screw style clamp is for positioning, pulling and turning of plate and fabrications.

**Suitable for use in positioning & turning of steel plates and sections.  
Not to be used as a lifting clamp.**

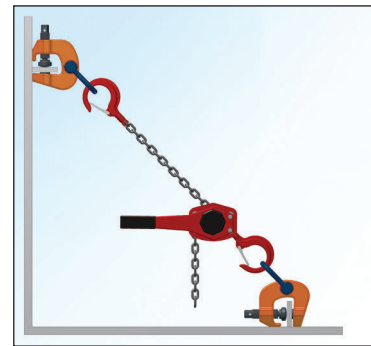
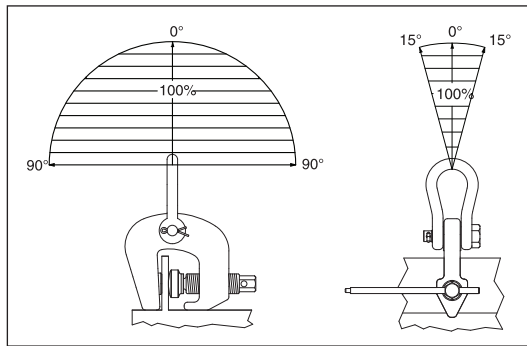
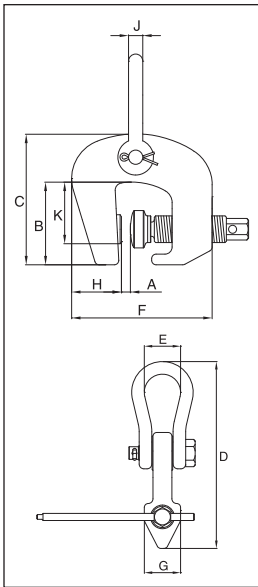
- Available in capacities of 1.5 and 3 metric tons.
- Jaw openings available: 0 to 50mm.
- Suitable for steel with a surface hardness up to 30 Rc.
- Forged alloy steel body for strength and smaller size. Forged alloy components, where required.
- Individually Proof Tested to 2 times the Working Load Limit with certification.
- Company name (CrosbyIP), logo, Working Load Limit and jaw opening permanently stamped on body.
- Each product is individually serialized, with the serial number and Proof Load test date stamped on body. Serial number is included on the test certificate with maintenance and warranty logbook.
- Maintenance replacement parts are available.
- Manufactured by a ISO 9001 facility.

**Load Rated**

## Model IPSC

Model	Working Load Limit (t)*	IPSC Stock No.	Weight Each (kg.)	Dimensions (mm)									
				Jaw A	B	C	D	E	F	G	H	J	K
IPSC	1.5	2701640	4.0	0 - 32	91	143	229	45	154	46	52	16	52
IPSC	3	2701641	6.0	0 - 50	105	165	265	50	190	54	59	19	60

\* Design Factor based on EN 13155 and ASME B30.20.



**Provides easy attachment of selected Crosby® IP clamp to hoist hook.**

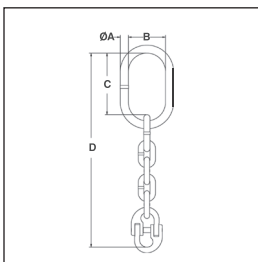
- Available in three sizes in the IP10 and IPU10 with capacities from .5 to 12 metric tons.
- Assembly consists of welded alloy master link, Grade 80 chain and A-1337 Lok-A-Loy for attachment to the clamp hoisting eye.
- Individually Proof Tested to 2.5 times the Working Load Limit of Grade 80 chain with certification.
- Company name or logo and frame number permanently stamped on link.
- Locking system provides for simple assembly - no special tools needed.
- Finish - Red Paint.
- Manufactured by a ISO 9001 facility.

**NOTE: Not intended to be used as a chain sling.**

## IP5000



The IP5000 Stinger Assembly is designed to be used as a connecting link between the clamp and the hoist hook.



## Model IP5000

Frame Size	Chain Size		Crosby® IP10 and IPU10 Clamp Sizes (t)*	IP5000 Stock No.	Weight Each (kg.)	Dimensions (mm)			
	(mm)	(in.)				A	B	C	D
1	8	5/16	0.5 - 1	2701695	.95	13.0	59.9	100	315
2	13	1/2	2 - 4.5	2701704	3.4	22.1	89.9	144	484
3	22	7/8	6 - 12	2701713	14.7	36.1	140	234	820

\* The working load of the assembly is based on working load limit of the selected clamp. Ultimate load is 5 times the Working Load Limit.

# Crosby® IP Clamps – Misc.

## IPU10/A



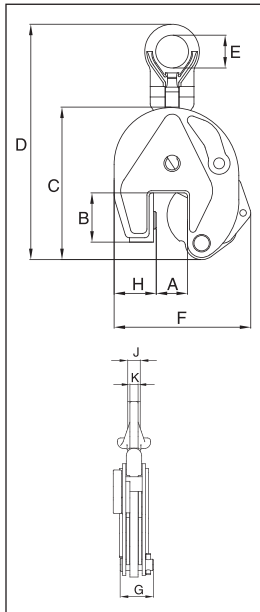
The IPU10/A automatically clicks on to the material as soon as the clamp is placed on the plate. The fact that the safety lock remains in position as the clamp closes precludes hazardous situations. Fastening the IPU10/A clamp in places that are difficult to reach is no problem.

## For vertical transport of plates

- Available in capacities of 1 and 2 metric tons.
- Jaw openings available: 0 to 35mm; 0" to 1.38".
- Welded alloy steel body for strength and smaller size. Forged alloy components where required.
- Individually Proof Tested to 2 times the Working Load Limit with certification.
- Company name (CrosbyIP), logo, Working Load Limit and jaw opening permanently stamped on body.
- Each product is individually serialized, with the serial number and Proof Load test date stamped on body. Serial number is included on the test certificate with maintenance and warranty logbook.
- Full 180° turning range for material transfer, turning or moving.
- Lock open, lock closed ability with latch for pretension on material and then release of material.
- Optional IP-5000 Stinger assembly available (see page 61). Allows for easy connection between the clamp and hoist hook.
- Minimum WLL of 10% of Maximum WLL.
- Maintenance replacement parts are available.
- Manufactured by a ISO 9001 facility.
- All sizes are **RFID EQUIPPED**.



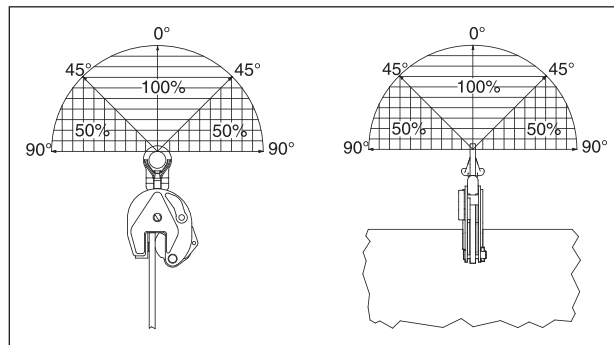
**Load Rated®**



## Model IPU10/A

Model	Working Load Limit (t)*	IPU10/A Stock No.	Weight Each (kg.)	Dimensions (mm)								
				Jaw A	B	C	D	E	F	G	H	K
IPU10/A 1	1	2701628	2.3	0 - 20	45	138	238	40	128	41	37	11
IPU10/A 2	2	2701629	8.9	0 - 35	78	201	378	70	200	61	72	16

\* Design Factor based on EN 13155 and ASME B30.20.





# Crosby<sup>®</sup> CLAMP-CO CLAMPS

Setting the  
Standard  
for Lifting

- Pipe Clamps
- Beam Clamps
- Barrier Grabs
- Granite / Curb Grabs



# Crosby® Real Life Solutions

## Crosby Clamp-Co Adjustable “Padded” PipeGrab

### Crosby CLAMP-CO

The new Crosby Clamp-Co Adjustable Pipe Grab provides an excellent means of handling cylindrical objects. Featuring *padded grabs*, the new Grab offers an excellent method of handling any pipe or solid bar, 3.5” to 36” (88.9 mm to 914 mm), especially where damage to material surface is not permitted.

- Capacities: 1,200 lbs. to 20,000 lbs.  
(544 kg. to 9,072 kg.)
- Each Grab size accommodates several diameters of pipe or solid bar.
- Auto indexing system provides quick connect and disconnect to load (one person - hands free).
- Individually Proof Tested to 2 times the Working Load Limit with certification.
- Designed to handle loads of various types of material, including:
  - Cast Iron / Steel
  - PVC
  - Painted
  - Epoxy Coated
- Finish - Red Paint
- Replacement pads are available.
- Features Crosby shackle as upper connection point.
- Custom sizes are available.
- All sizes are **RFID EQUIPPED**.



### Features Include:



Easy lock and unlock transport lever.

Auto indexing mechanism (one person - hands free)



Replaceable Pads

the Crosby® group  
www.thecrosbygroup.com

“When buying Crosby, you’re buying more than product, you’re buying Quality”.



# Crosby® Clamp-Co Padded Pipe Grab

CCPA

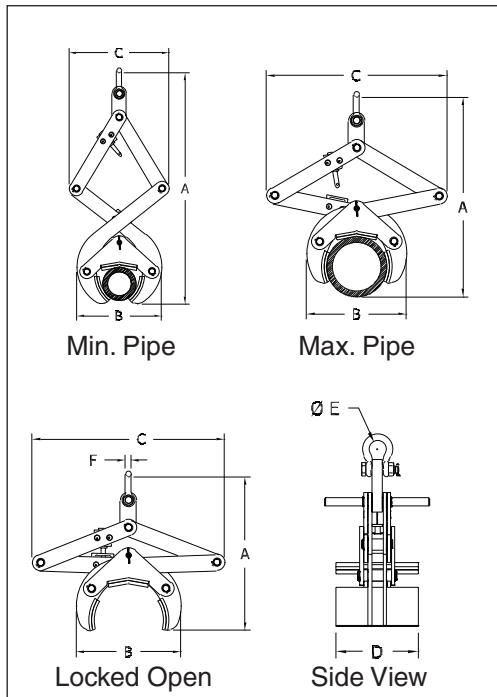


The new Crosby Clamp-Co Adjustable Pipe Grab provides an excellent means of handling cylindrical objects. Featuring padded grabs, the new Grab offers an excellent method of handling any pipe or solid bar, 88.9 mm to 914 mm, especially where damage to material surface is not permitted.

- Capacities: 544 kg. to 9072 kg.
- Each Grab size accommodates several diameters of pipe or solid bar.
- Auto indexing system provides quick connect and disconnect to load (one person - hands free).
- Individually Proof Tested to 2 times the Working Load Limit with certification.
- Designed to handle loads of various types of material, including:
  - Cast Iron / Steel
  - PVC
  - Painted
  - Epoxy Coated
- Finish - Red Paint
- Replacement pads are available.
- Features Crosby shackle as upper connection point.
- Custom sizes are available.
- All sizes are **RFID EQUIPPED**.



## Padded Pipe Grab



Model No.	CCPA Stock No.	Working Load Limit* (kg.)	Weight Each (kg.)	Grip Width	Dimensions (mm)					
					A	B	C	D	E	F
PA-5	2736000	544	10.4	Locked Open	343	254	457	165	33.3	12.7
				Min. Pipe 88.9mm	686	229	203			
				Max. Pipe 141mm	584	229	375			
PA-8	2736009	907	34.0	Locked Open	597	394	705	254	42.9	16.0
				Min. Pipe 141mm	1029	368	356			
				Max. Pipe 224mm	864	375	610			
PA-14	2736018	2041	104	Locked Open	730	610	724	394	38.1	25.4
				Min. Pipe 224mm	1168	572	343			
				Max. Pipe 356mm	864	584	660			
PA-22	2736027	4536	225	Locked Open	1066	914	1079	508	63.5	38.1
				Min. Pipe 356mm	1714	863	482			
				Max. Pipe 559mm	1320	914	1016			
PA-36	2736036	9072	567	Locked Open	1455	1449	1456	762	85.6	38.1
				Min. Pipe 610mm	2337	1330	685			
				Max. Pipe 914mm	1686	1398	1352			

\* Maximum Proof Load is 2 times the Working Load Limit.

# Crosby® Clamp-Co Pipe Grabs

## CCPG

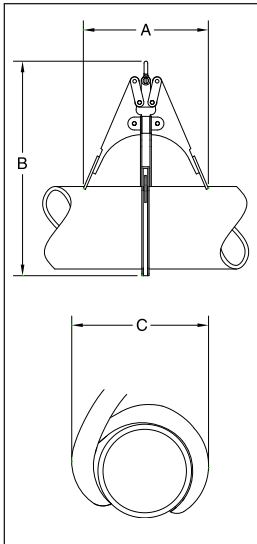
Crosby Clamp-Co Pipe Grabs provide an excellent means of handling cylindrical objects as long as they meet "Pipe O.D." and "Working Load Limits" referenced in the table below.



- Capacities: 204 kg. to 3175 kg.
- Moveable outriggers help stabilize the load.
- No blocking of load required.
- Individually Proof Tested to 2 times the Working Load Limit with certification.
- Designed to handle loads of various types of material, including:
  - Cast Iron
  - Steel
  - PVC
  - C900
  - Yellowmine Ductile Iron
  - Cement Pipe
- Finish - Red Paint.
- Custom sizes are available.
- All sizes are **RFID EQUIPPED**.



**NOTE:** Pipe grab sizes listed will handle all classes in a category of ASA standard cast iron pipe, C900, Yellowmine, Schedule 40, 80 & 120 PVC or ASA standard steel welded and seamless pipe. Standard, extra strong and double extra all have the same outside diameter.



### For Cast Iron Pipe

- C-900, C-905, Bluestripe C-906, Certa-Lok PVC Pressure Pipe

Model No.	CCPG- 900 Stock No.	Working Load Limit (kg.)*	Pipe O.D. (mm)	Weight Each (kg.)	Dimensions (mm)		
					A	B	C
C-3	2730000	204	102	4.54	127	254	152
C-4	2730009	272	122	4.99	203	356	178
C-6	2730018	454	175	6.80	279	432	279
C-8	2730027	635	230	11.3	330	559	356
C-10	2730036	907	282	21.8	381	686	432
C-12	2730045	1134	335	32.7	457	813	508
C-14	2730054	1588	389	47.6	559	965	584
C-16	2730063	1814	442	59.0	610	1067	635
C-18	2730072	2268	495	77.1	660	1143	711
C-20	2730081	2948	549	95.3	711	1270	813
C-24	2730090	3175	655	102	787	1473	889

\* Maximum Proof Load is 2 times the Working Load Limit.

### For Steel Pipe

- SDR Class 200, Yellowmine, PVC Schedule 40, 80 and 120

Model No.	CCPG- 200 Stock No.	Working Load Limit (kg.)*	Pipe O.D. (mm)	Weight Each (kg.)	Dimensions (mm)		
					A	B	C
S-3	2731000	204	88.9	4.54	127	254	152
S-4	2731009	272	114	4.99	203	356	178
S-6	2731018	454	168	6.80	279	432	279
S-8	2731027	635	219	11.3	330	559	356
S-10	2731036	907	273	21.8	381	686	432
S-12	2731045	1134	324	32.7	457	813	508
S-14	2731054	1588	356	47.6	559	965	584
S-16	2731063	1814	406	59.0	610	1067	635
S-18	2731072	2268	457	77.1	660	1143	711
S-20	2731081	2948	508	95.3	711	1270	813
S-24	2731090	3175	610	102	787	1473	889

\* Maximum Proof Load is 2 times the Working Load Limit.

# Crosby® Clamp-Co Beam Clamps

CCBC



Crosby Clamp-Co Beam Clamps provide an efficient method for handling wide flange beam sections and plate girders. When lifting, these beam clamps grip the beam at three points, and when properly balanced and safely guided, the beam can be handled even if the clamp is slightly off center lengthwise.

- Capacities: 4.54 to 31.8 metric tons.
- Eliminates the need for slings, chokers, and spreader bars.
- When applied to load, the tongs automatically open and slide under the flange of the beam.
- Center plate and gripping tongs work together - the heavier the beam, the greater the clamping pressure.
- Model "NS" clamps have a recessed base to accept studs welded to the beam surface.
- Individually Proof Tested to 2 times the Working Load Limit with certification.
- Finish - Red Paint.
- All sizes are **RFID EQUIPPED**.



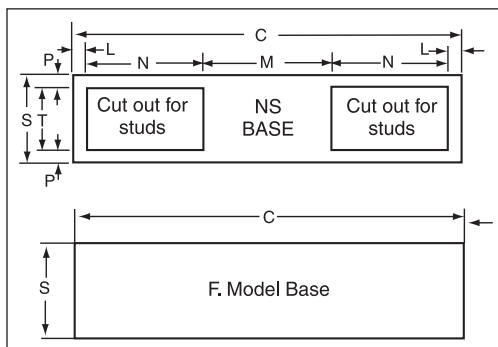
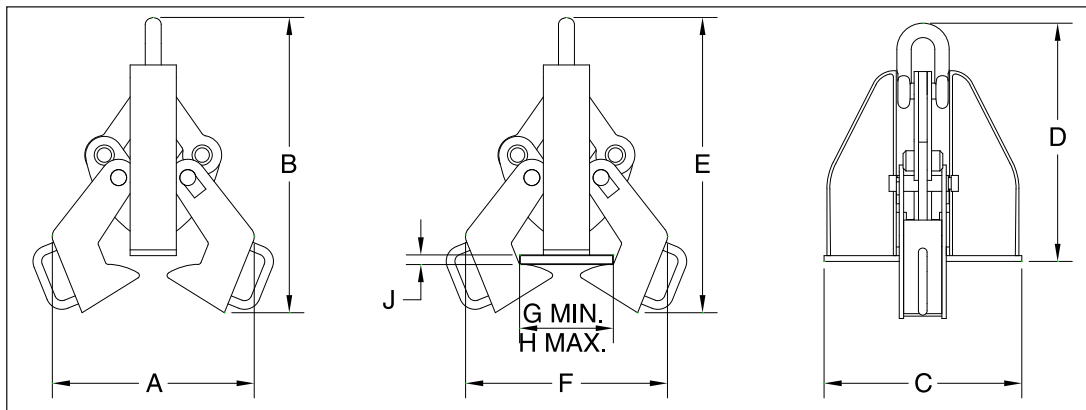
**NOTE:** Control the beam at all times. Beams should be gripped as near the center as possible. Snubbing lines at each end must be used to control excessive twisting or swinging, and to guide the beam to its proper place. Each lifting situation may have a specific demand which should be addressed before lifting.

## Beam Clamps

Model No.	CCBC-500 Stock No.	Working Load Limit (t)*	Flange Grip Range (mm)		Weight Each (kg.)	Dimensions (mm)									
			Width	Thickness		A	B	C	D	E	F	G	H	J	
F-5	2732000	4.54	102 - 254	13 - 25	31.8	241	660	305	508	648	406	102	254	25.4	
F-15	2732009	13.6	178 - 432	13 - 51	69.4	394	864	432	686	876	635	178	432	50.8	
NS-15	2732018	13.6	178 - 432	13 - 51	69.4	394	864	432	686	876	635	178	432	50.8	
F-25	2732027	22.7	406 - 610	25 - 76	132	584	1219	565	914	1346	946	406	610	76.2	
NS-25	2732036	22.7	406 - 610	25 - 76	132	584	1219	565	914	1346	946	406	610	76.2	
F-35	2732045	31.8	406 - 914	41 - 102	235	762	1626	699	1219	1473	1346	406	914	102	
NS-35	2732054	31.8	406 - 914	41 - 102	235	762	1626	699	1219	1473	1346	406	914	102	

\* Maximum Proof Load is 2 times the Working Load Limit.

NOTE: : For beam clamps larger than 35 Tons, please contact the Crosby Special Engineered Products Department.



Base Stock No.	Base Dimensions (mm)						
	C	L	M	N	P	S	T
F-5	343	-	-	-	-	76.2	-
F-15	432	-	-	-	-	102	-
NS-15	432	12.7	165	114	19.1	102	63.5
F-25	565	-	-	-	-	140	-
NS-25	565	19.1	197	165	19.1	140	102
F-35	699	-	-	-	-	152	-
NS-35	699	19.1	229	216	19.1	152	114

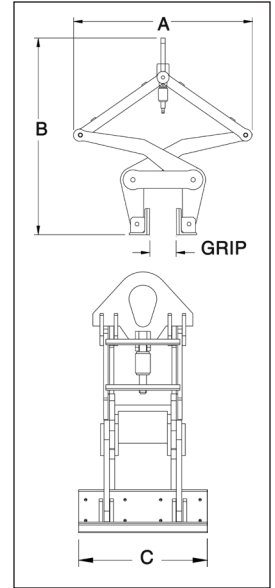
# Barrier Grabs / Curb Grabs

## CCBG



Crosby Clamp-Co Barrier Grabs provide a fast and efficient method for handling concrete road barriers.

- Hands-free operation.
- Alloy Steel Construction.
- Available with polyurethane pads or hardened steel jaw. (Replacement kits available).
- Eliminates the need for slings, chokers and spreader bars.
- Individually Proof Tested to 2 times the Working Load Limit with certification.
- Finish - Red Paint.
- All sizes are **RFID EQUIPPED**.



### Barrier Grab

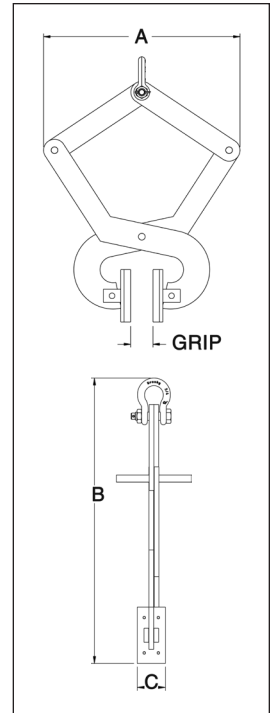
Model No.	CCBG-150 Stock No.	Working Load Limit (t)	Weight Each (kg.)	Grip Width (mm)	Dimensions (mm)		
					A	B	C
BG-9000	2734009	4.08	132	152 (min.)	1038	1140	457
				305 (max.)	1117	933	457

## CCGG



Crosby Clamp-Co Curb Grabs provide a fast and efficient method for handling large granite curbs.

- Virtually no manual assistance is required.
- Alloy Steel Construction.
- Available with polyurethane pads or hardened steel jaw. (Replacement kits available).
- Eliminates the need for slings, chokers and spreader bars.
- Individually Proof Tested to 2 times the Working Load Limit with certification.
- Finish - Red Paint.
- All sizes are **RFID EQUIPPED**.



### Curb Grab

Model No.	CCGG-140 Stock No.	Working Load Limit (kg.)	Weight Each (kg.)	Grip Width (mm)	Dimensions (mm)		
					A	B	C
CG-1400	2734000	635	16.8	102 (min.)	565	683	254
				178 (max.)	635	514	76.2



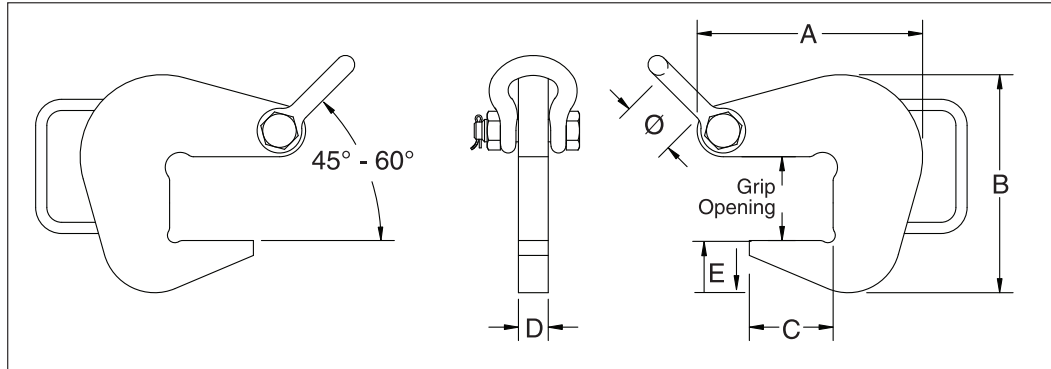
# Crosby® Clamp-Co Pipe Hooks

CCPH

Crosby Clamp-Co Pipe Hooks provide a fast and efficient method for lifting pipe, tube or any similarly shaped fabrications.



- Alloy steel plate construction.
- Equipped with a convenient handle.
- Equipped with a Bolt Type Shackle.
- Non marring inserts available.
- Used in pairs with 45° - 60° horizontal angle or 60° - 90° included angle.



## Pipe Hooks

Model	CCPH Stock No.	Working Load Limit (Per Pair) (t)**	Grip (mm)	Weight Each (kg.)	Dimensions (mm)						Shackle Size (in.)	Cast Aluminium Inserts*
					A	B	C	D	E	Ø		
PH-2	2734500	2	52.3	2.70	148	129	52.3	25.4	31.8	42.9	5/8	2734800 2734809
PH-4	2734509	4	71.4	4.56	192	186	71.4	25.4	44.4	42.9	5/8	2734818
PH-6	2734518	6	103	8.05	259	256	103	25.4	57.2	50.8	3/4	2734827
PH-10	2734527	10	154	17.5	376	383	154	25.4	88.9	68.3	1.0	2734836

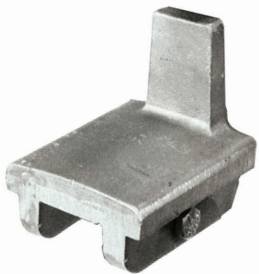
\* See CCPHI chart for Pipe ID range.

\*\*Design factor based on EN13155 and ASME B30.20

Contact our Specials Sales Department for custom Pipe Hooks or reference the special request form on page 439.

## Pipe Hook Inserts

- Interchangeable cast aluminium inserts for use with the CCPH Pipe Hook that minimizes thread and pipe damage.



## CCPHI

Catalog Number	Stock No.	ID of Pipe (mm)
CCPHI	2734800	76 - 305
	2734809	305 - 457
	2734818	457 - 762
	2734827	762 - 1067
	2734836	1067 - 1329

