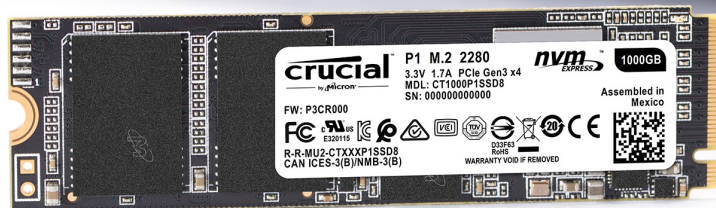




The memory & storage experts™

# HOW TO INSTALL A CRUCIAL® NVMe™ PCIe® M.2 SSD IN YOUR COMPUTER



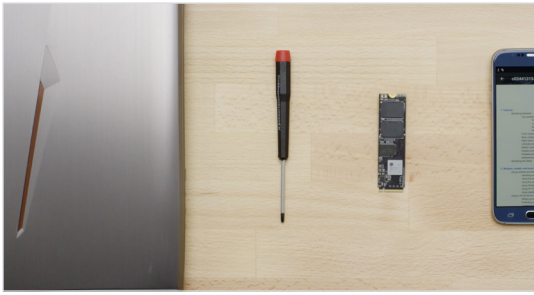
Installing a Crucial SSD is easy and makes your computer significantly faster!



---

## PART 1: PREPARE

---



### 1. Gather supplies

You'll need your computer, a screwdriver, your new Crucial SSD, and your computer's owner's manual.



### 2. Back up important files

Before starting the install process, save any important files on your computer to an external storage drive, a USB flash drive, or cloud storage.



### 3. Go slowly and deliberately

The information you need is all here. Your computer will likely look different than the ones shown, but the process is the same. Read each step thoroughly and consult our **Helpful Tips** for more info.

#### HELPFUL TIP

NVMe SSD support and drivers are not available for Windows® 7. Your computer or motherboard manufacturer might be able to add support. There is also a hotfix available from Microsoft® that can be applied to natively support NVMe drives for Windows 7.

#### DID YOU KNOW...?

Clearing your workspace helps prevent the buildup of static electricity that could damage your new drive.

---

## PART 2: INSTALL

---



### 1. Shut down your system

Turn off your computer completely.



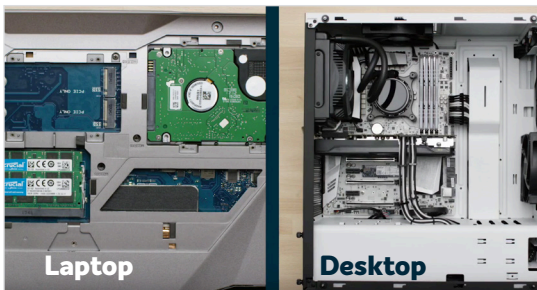
## 2. Remove the power cable and battery

Now remove the power cable and battery. The battery removal step applies only to laptops when it's possible to remove the battery. To see how to remove the battery, refer to your owner's manual.



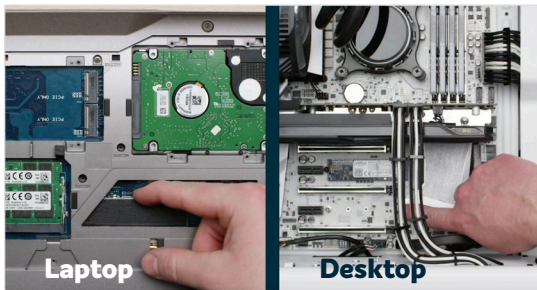
## 3. Discharge residual power

If your laptop has a removable battery, remove it, and hold the power button for five seconds to discharge any electricity left in the system.



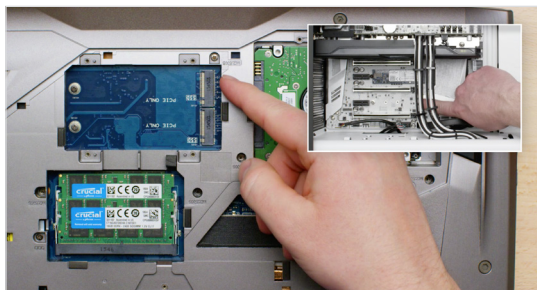
## 4. Open the case

How you do this will vary from system to system, so consult your owner's manual for exact instructions.



## 5. Ground yourself

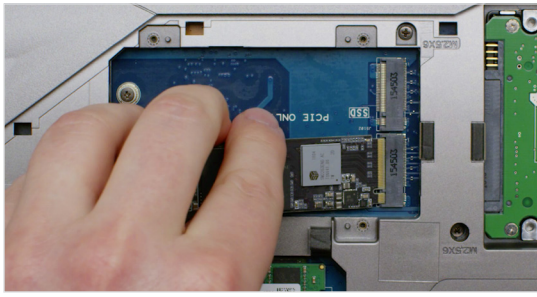
Touch an unpainted metal surface to ground yourself. This protects your computer's components from the static electricity that's naturally present in your body – grounding is an extra safeguard.



## 6. Locate the M.2 PCIe slot

This slot is usually easy to find in desktops, but in laptops the location will vary – it's typically under the bottom panel, or under the keyboard. Refer to your owner's manual for the exact location, as every system looks slightly different.

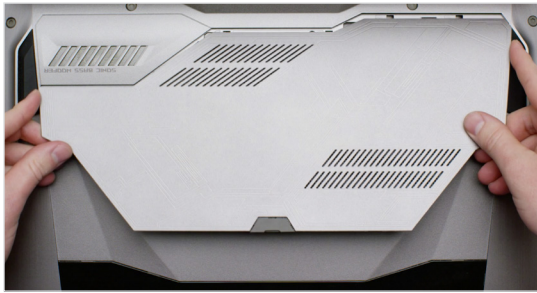




## 7. Insert the SSD

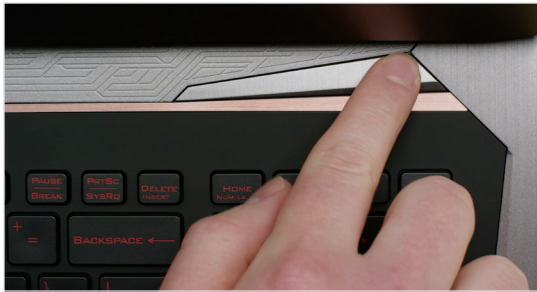
Depending on your computer, there might be a heat sink or screw that needs to be removed prior to inserting your new NVMe PCIe SSD. To insert your Crucial NVMe PCIe SSD, hold the SSD carefully by the sides. Do not touch the gold connector pins. Align the notches in the SSD with the ridges in the PCIe slot, then insert at a 30-degree angle. Do not force the connection.

To secure the drive, it might be necessary to insert the screw into the provided mount on the motherboard. Do not overtighten the screw.



## 8. Reassemble your system

After the SSD is securely seated in the slot, put your computer back together and reconnect the battery if it was removed.



## 9. Turn on your computer

Turn on your computer. Unless you removed your old storage drive in a previous step, the computer is booting from the old drive. Part 3 will walk you through how to clone your data to use your new drive to boot up.

### HELPFUL TIP

With some motherboards, you might see some messages about configuring to increase speeds of NVMe SSDs or about enabling and disabling shared bandwidth of SATA and NVMe ports. This is not a malfunction. You can configure your hardware for optimal performance and avoid malfunctions by obtaining detailed information about your motherboard from the manufacturer.

Amount of data on old hard drive	Time it may take to copy to new SSD
Less than 256GB	20-30 minutes
256-512GB	30-60 minutes
512GB-1TB	60-90 minutes
More than 1TB	90+ minutes

### DID YOU KNOW...?

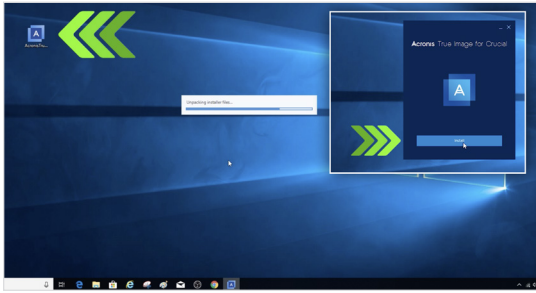
The longest part of the SSD install process is copying everything from your old drive to your new SSD. Before you start, get a sense of how long this'll take by referring to our chart on the left.

## PART 3: COPY



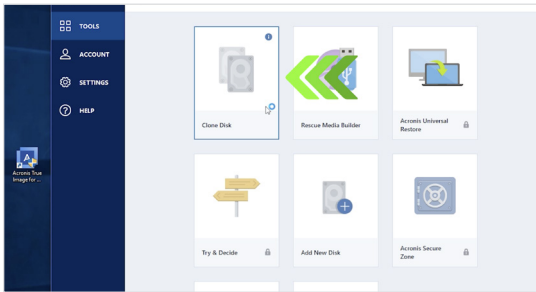
### 1. Download the cloning software

On the computer with the SSD, go to [www.crucial.com/clone](http://www.crucial.com/clone) to download the software that will copy your old drive to your new SSD. This software comes free with Crucial SSDs.



### 2. Install the software you downloaded

Open the file you downloaded and accept all of the prompts. A screen will then pop up. Click **Install**. After installation is complete, start the application.



### 3. Prepare to copy (clone) your data

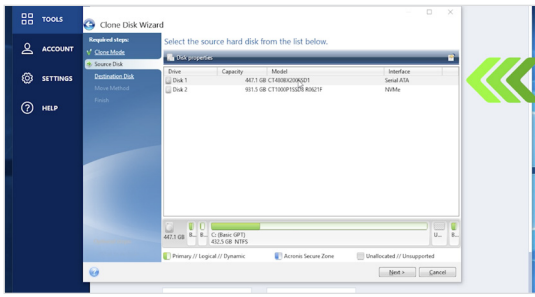
You'll now see several options in the software. Select the **Clone Disk** option. You'll then be asked to select a clone mode. If you've never done this before, we recommend the **Automatic** method, then click the **Next** button.

#### HELPFUL TIP

If your old storage drive is 128GB (for example) and you copy its contents to a 275GB SSD, the SSD may show up in your system as a 128GB drive, even though it's actually the size that you bought. No need to fear – you can still store more on it, but you'll need to make some adjustments to the drive's settings. This doesn't usually happen, but if it does, we want to let you know that it's OK and that it's based on your system, not you.

#### DID YOU KNOW...?

Millions of people have used this software to copy data, from everyday home users with passwords and precious home photos to corporate users who have lots of proprietary information. The security and privacy of your data is important to us, and we don't compromise that. Copying is a safe, secure process.



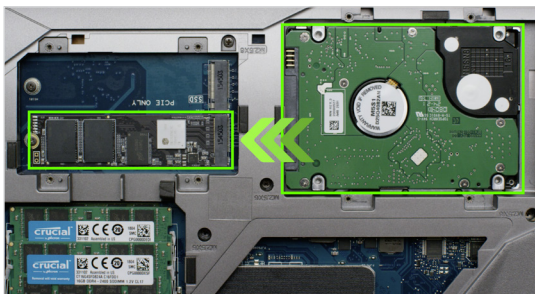
## 4. Select source and destination drives

Your “source” drive is your existing drive (disk). Select it by clicking on it, then click **Next**. Now select your “destination” drive (your new SSD) and click **Next**. On the following screen, click **Proceed** to start copying your data.



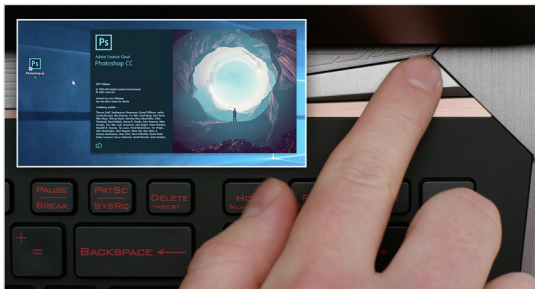
## 5. Wait for your data to copy

It'll take a while for everything to copy, but the Acronis software will keep you updated on the progress.



## 6. Change your primary or boot drive

When everything has copied over, you'll need to tell your operating system to use your new SSD as the primary drive. This can be done by removing the old drive, which will force your system to use the new drive. Check your computer's owner's manual or contact the computer manufacturer for instructions on how to change the primary drive.



## 7. Have some fun

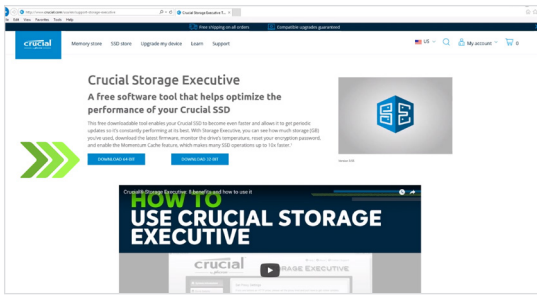
See how fast your favorite apps open when you click on them! Your SSD is installed, but you can make it even faster by enabling a special feature.

# PART 4: DOWNLOAD



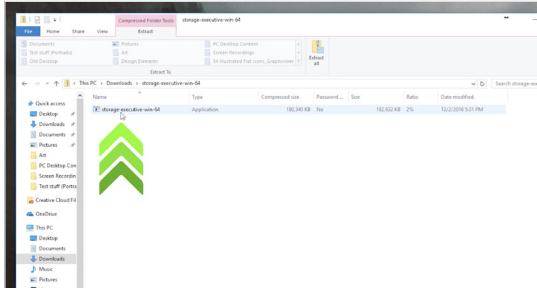
## 1. Enable Storage Executive

This free Crucial software enables your SSD to receive performance updates and to improve the performance of your new SSD by using system resources to increase performance.



## 2. Click on one of the “Download” buttons

Download times will vary based on your internet connection, but average 1-3 minutes.



## 3. Install and run Storage Executive

Click on the file you just downloaded. If it doesn't open right away, double-click on it, then save it to your desktop and open it from there. Follow the onscreen prompts and instructions to install and start using the software.



## 4. Enable Momentum Cache and make your SSD even faster

In the left menu, click on **Momentum Cache**. Enabling this feature forces your computer to restart, which is normal. The feature doesn't work with RAID arrays.

### HELPFUL TIP

Download the 64-bit version of the software if you have a 64-bit operating system (most users).  
 Download the 32-bit version if you have a 32-bit operating system. Not sure which one you have?  
 Follow the steps in our chart below.

#### Operating system

#### How to know if you have the 32-bit or 64-bit version

#### Windows® 10

In the **Start** menu, type **This PC** into the Windows search bar, but don't hit enter. Right click on the **This PC** option that displays, then select **Properties** and your type of operating system will be displayed onscreen.

#### Windows® 8

Move your mouse to the upper right side of the screen and click on the search tool that appears. Type **Computer** into the search field, then right click on it and select **Properties**. Your type of operating system will be displayed onscreen.

#### Windows® 7

In the **Start** menu, right click on **Computer**, then select **Properties** and your type of operating system will be displayed onscreen.

If you see anything other than 64-bit, download the 32-bit version of the software.

### DID YOU KNOW...?

You can use Storage Executive to see how much storage you've used, monitor your drive's temperature, and enable the **Momentum Cache** feature, which makes many SSD operations up to 10x faster.





## Congratulations!

Now that you're an expert installer, watch out!  
Your friends and family might start asking you to do their installs ;)

### Customer Service and Technical Support

#### North and South America

<http://www.crucial.com/usa/en/support-contact>

#### Asia, Australia, and New Zealand

ANZ: <http://www.crucial.com/usa/en/support-contact>

JP: <http://www.crucial.jp/jpn/ja/support-contact>

CN: <https://www.crucial.cn/采购咨询>

#### Europe

UK: <http://uk.crucial.com/gbr/en/support-contact>

FR: <http://www.crucial.fr/fra/fr/aide-contact>

DE: <http://www.crucial.de/deu/de/support-kontakt>

IT: <http://it.crucial.com/ita/it/assistenza-contatti>

VERSION: 4/22/19

©2019 Micron Technology, Inc. All rights reserved. Footage is for representational purposes only. Information, products, processes, and/or specifications are subject to change without notice. Neither Crucial nor Micron Technology, Inc. is responsible for omissions or errors in typography or photography. Micron, the Micron logo, Crucial, and the Crucial logo are trademarks or registered trademarks of Micron Technology, Inc.

**crucial**  
by Micron™