



Cisco CSPC

Installing the CSPC ISO Image

October 2021



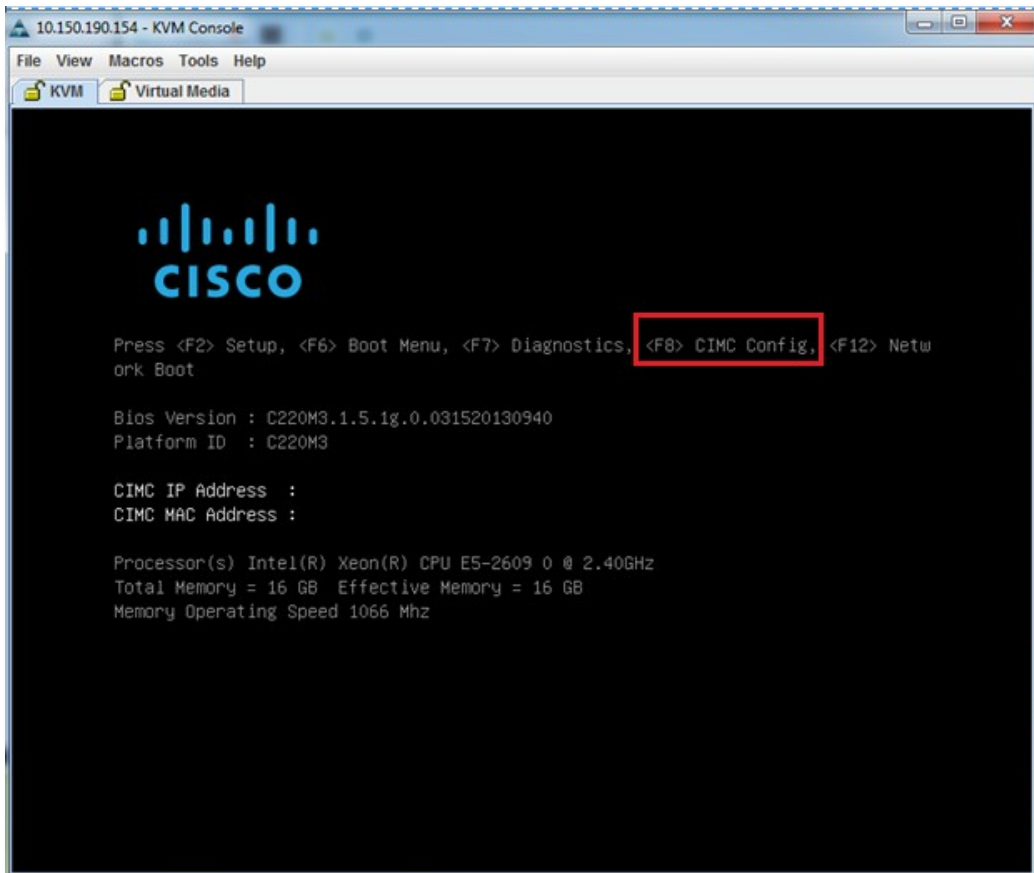
Contents

| | |
|------------------------------|---|
| IP Configuration | 3 |
| Software Configuration | 7 |

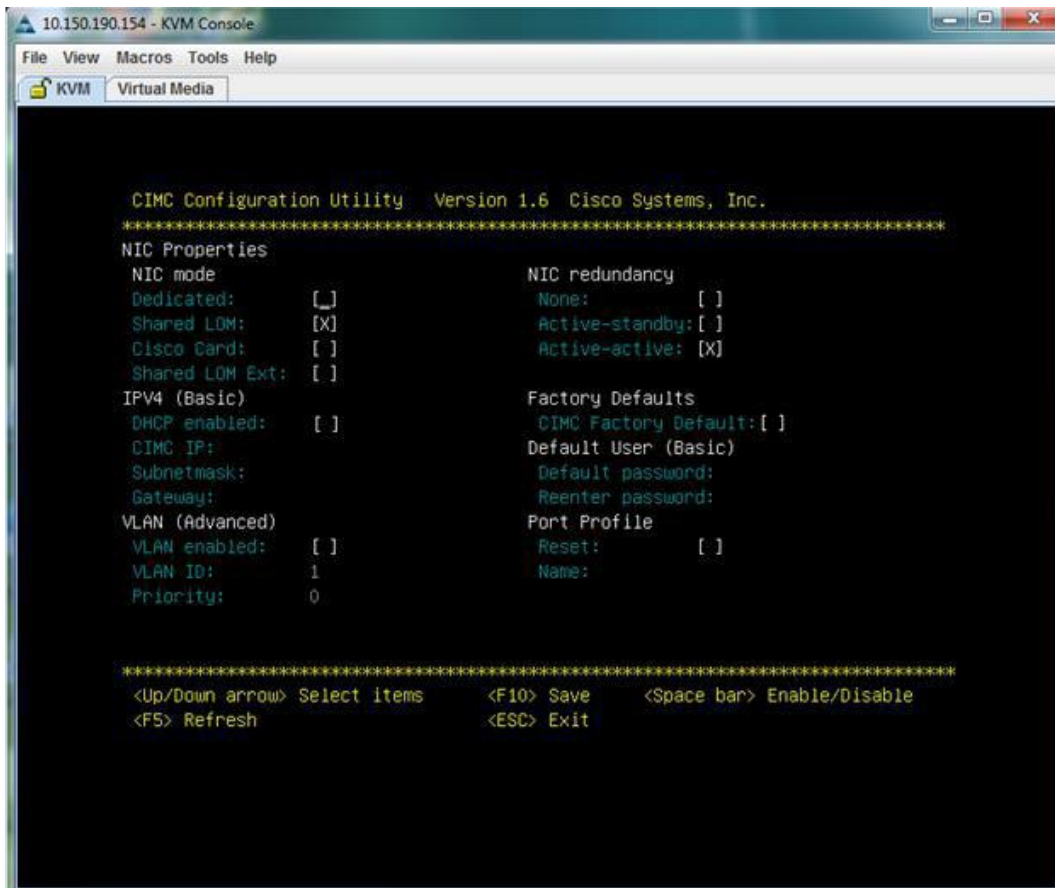
Follow these steps to install the CSPC ISO image on the hardware unit you created based on the [CSPC ISO Application Note](#).

IP Configuration

1. Boot up the server where the CSPC software will be installed.
2. Connect a keyboard and monitor to the server. Alternatively, connect to the box through a console cable.
3. You will see the following screen. Press **(F8)** to start the CIMC configuration process as seen below.

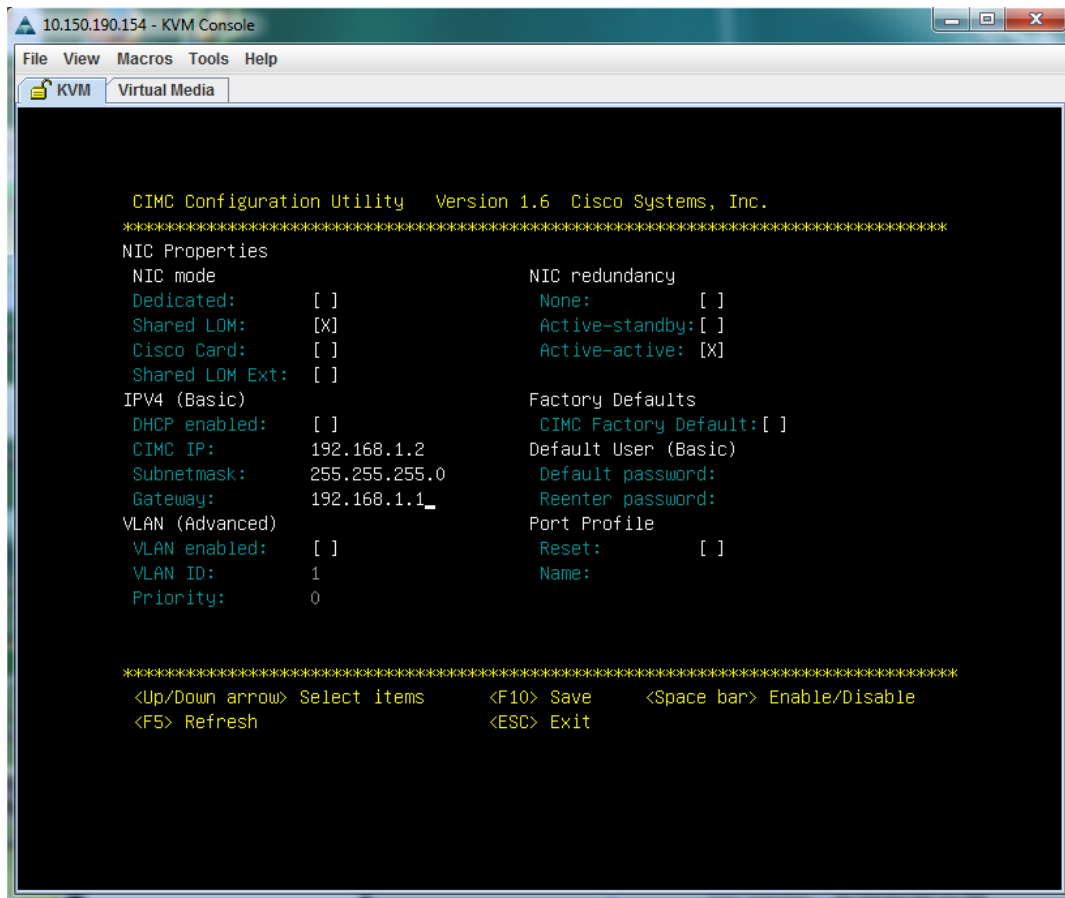


The following window will be shown:

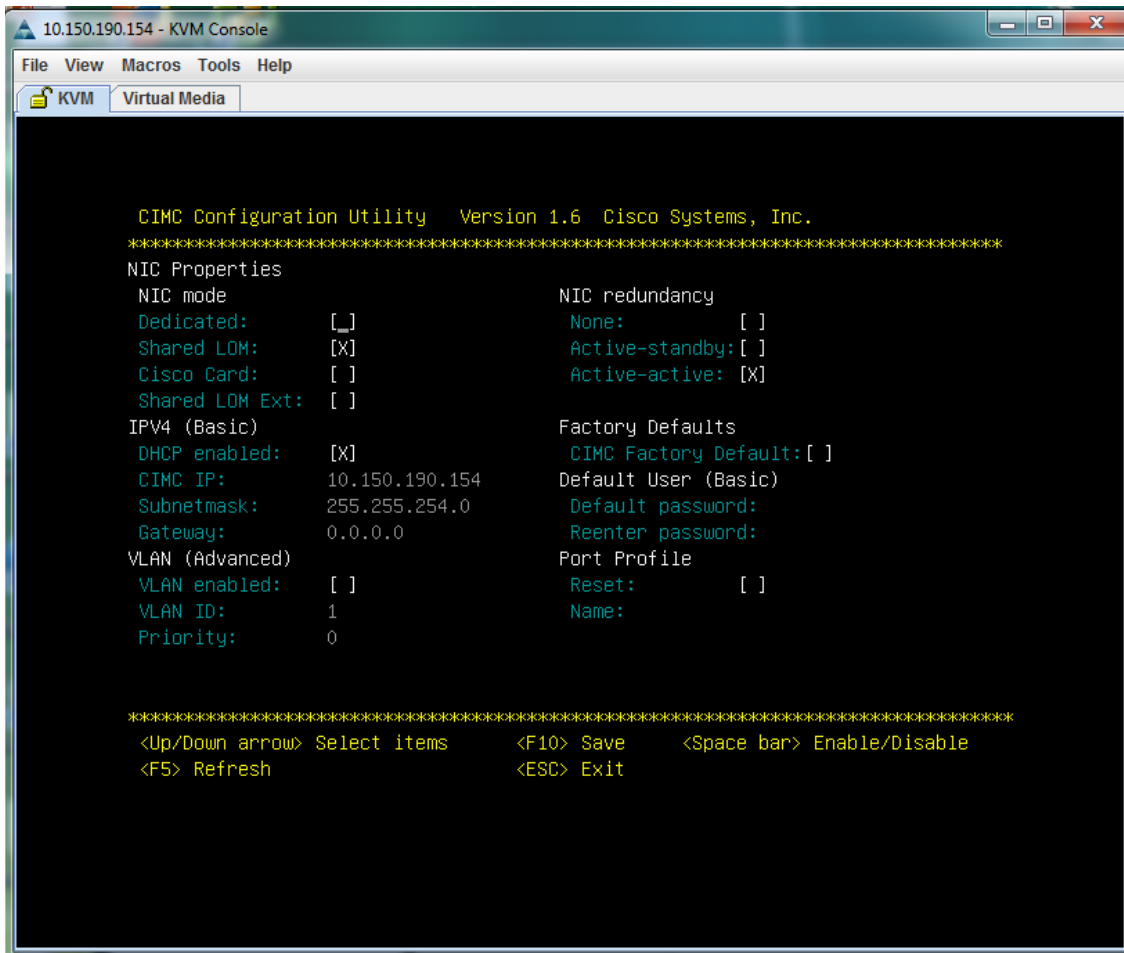


4. Configure an IP address for the device.

- For a STATIC IP address, fill in CIMC IP, Subnet mask, and Gateway



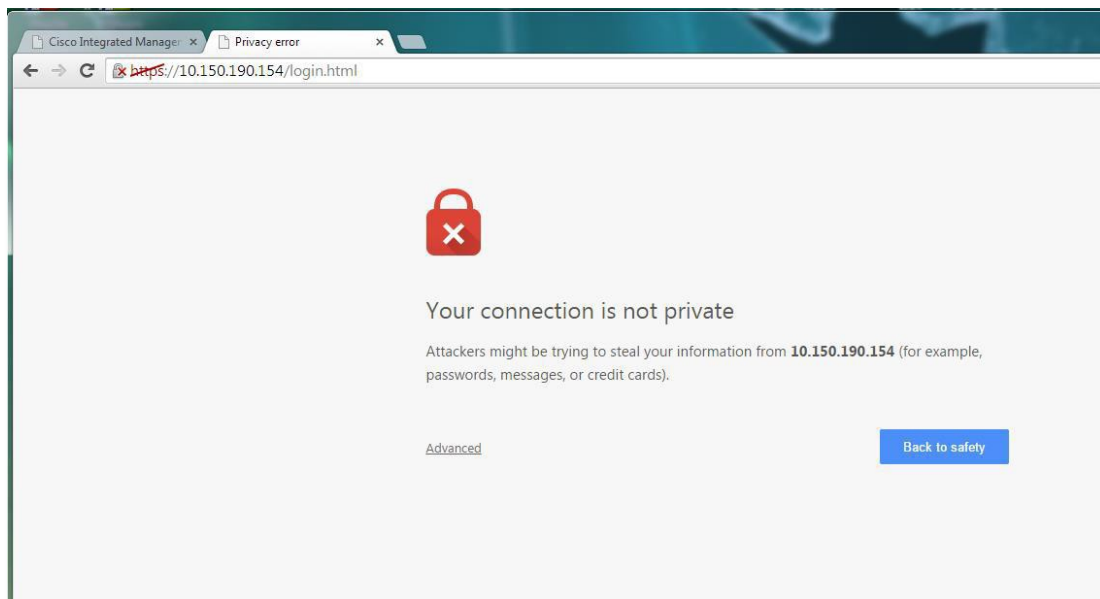
- For a DHCP IP address, navigate to DHCP Enable, hit the spacebar to enable the option.



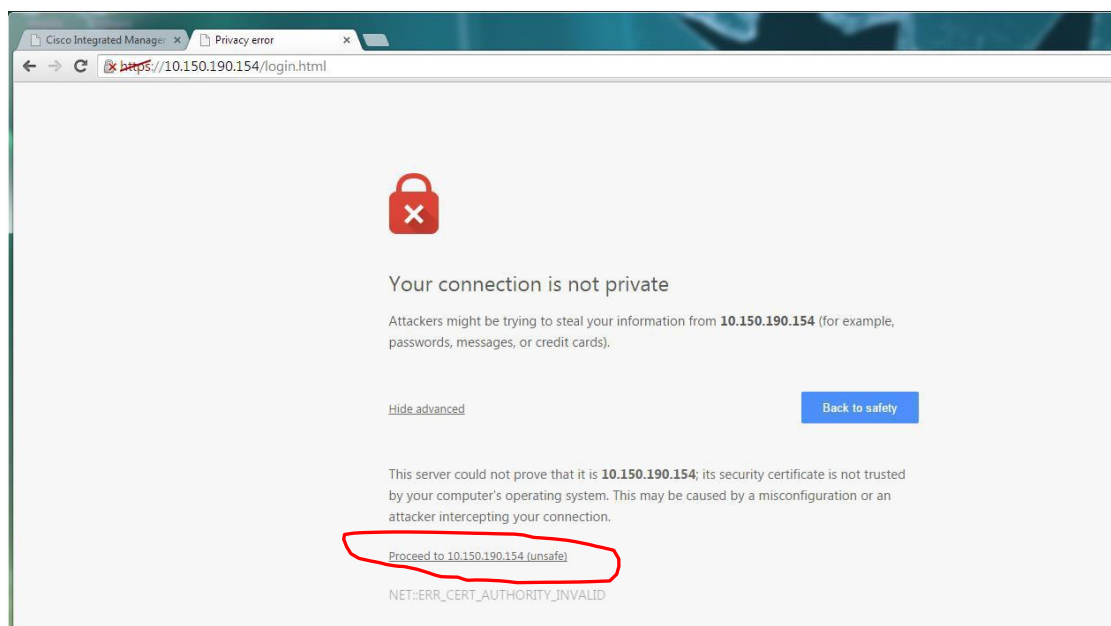
5. Press **(F10)** to save the IP address information.
6. Press **ESC** to exit the CIMC configuration process.

Software Configuration

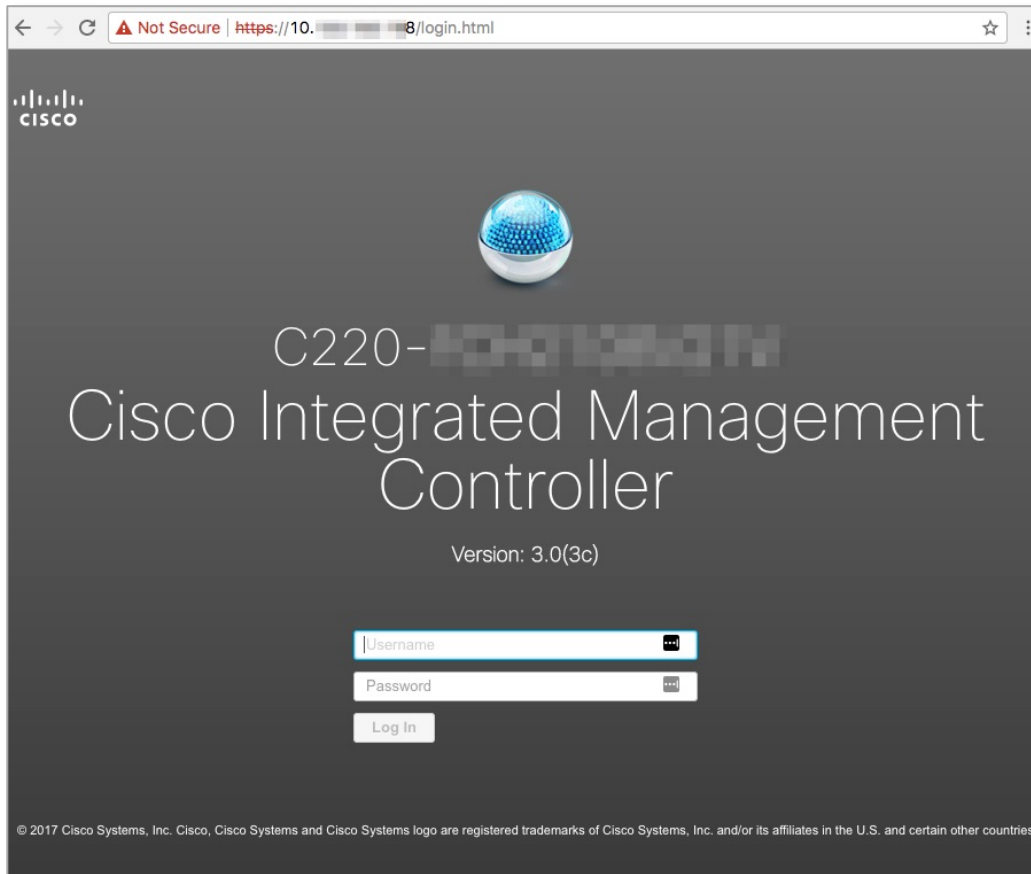
1. Open a browser window and enter the CIMC IP address on the address bar as seen below.
(The next steps may vary slightly depending on the browser. These steps were done on Google Chrome)
2. Click **Advanced**



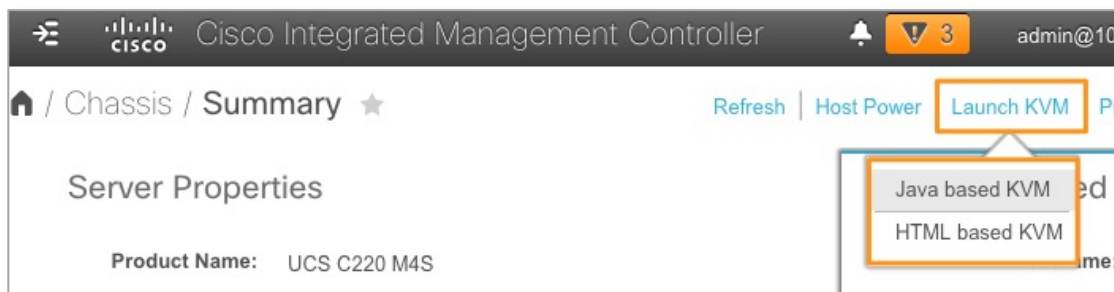
3. Click on **Proceed to <your_ip_address> (unsafe)**.



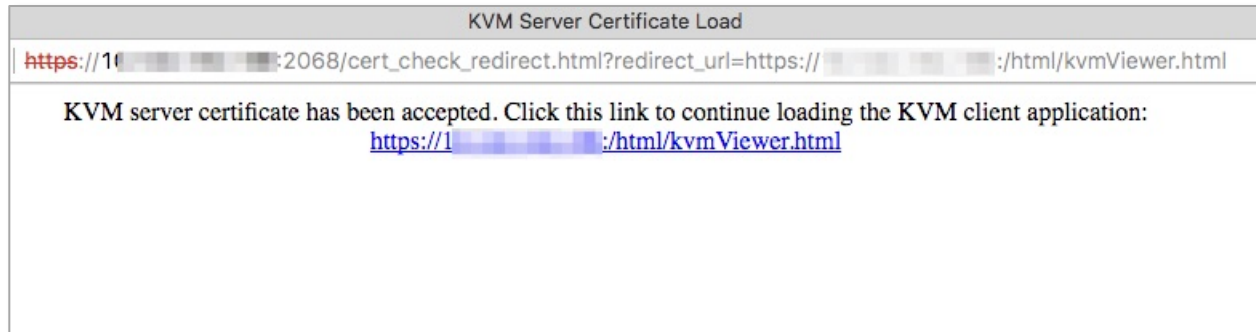
4. Login to the CIMC console with your admin credentials.



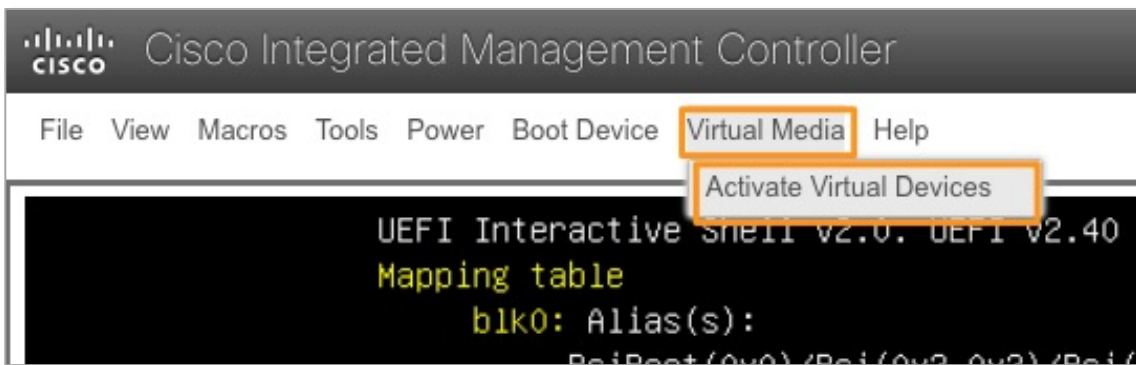
5. Launch the KVM session by selecting the button shown below. Choose whether to launch the HTML or JAVA based KVM. In this example, HTML is used.



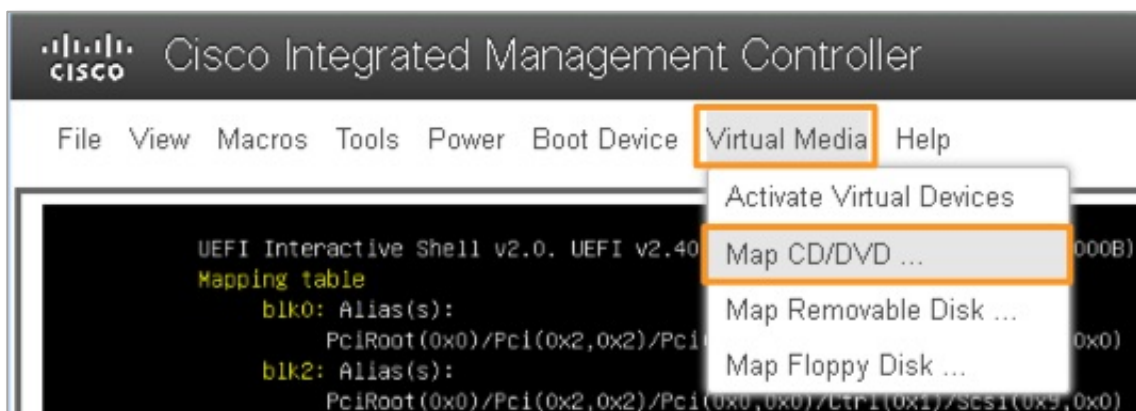
- Click on the link provided.



- On the screen displayed, select **Virtual Media > Activate Virtual Devices**.



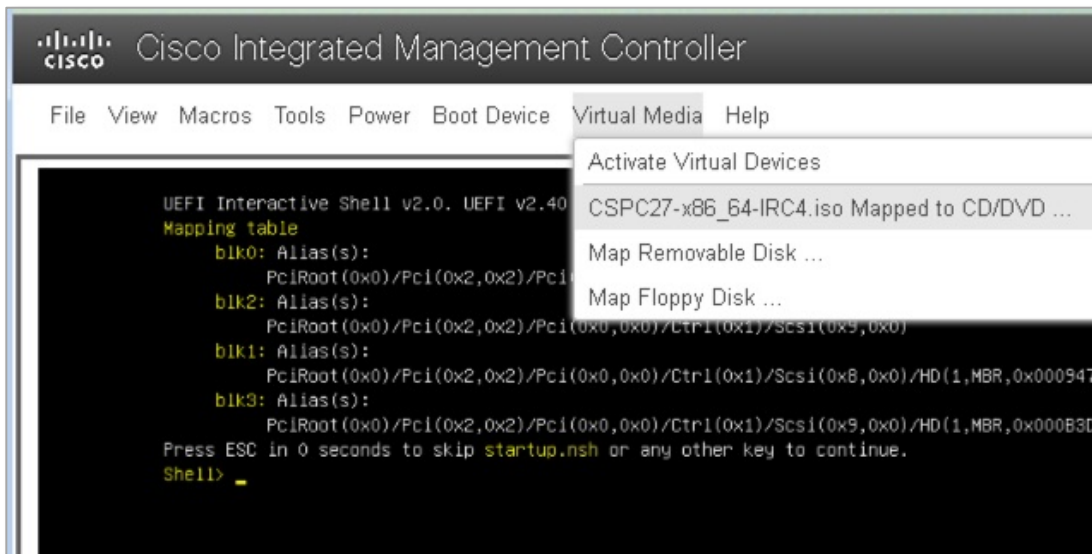
- Once virtual media is activated, map the ISO image by selecting **Map CD/DVD...** under Virtual Media.



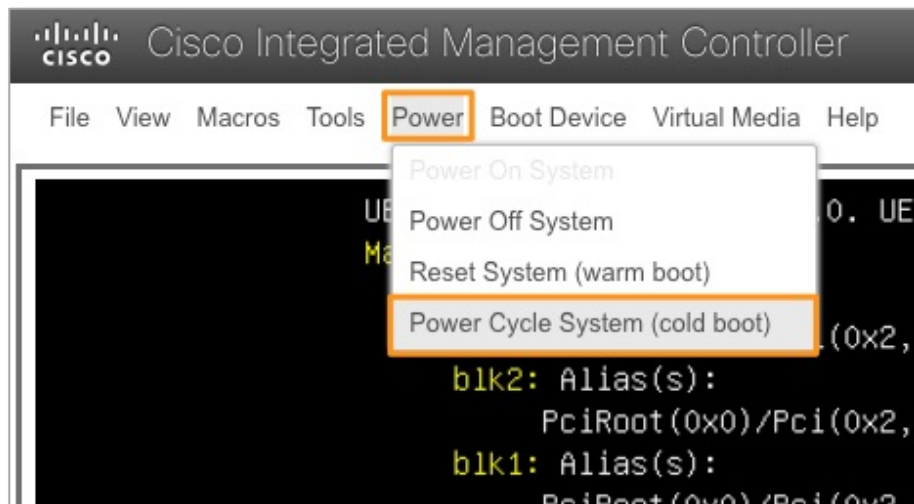
- Click on Browse, navigate to where the ISO image is located and click on **Map Drive**.



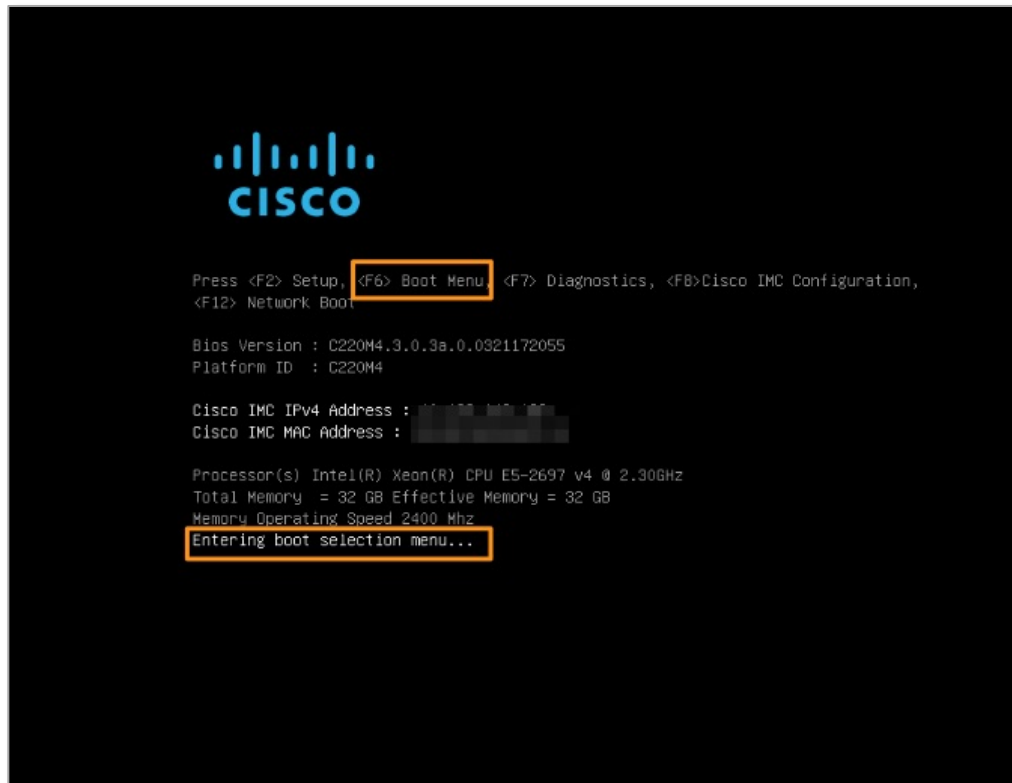
- Confirm that the image has been mapped.



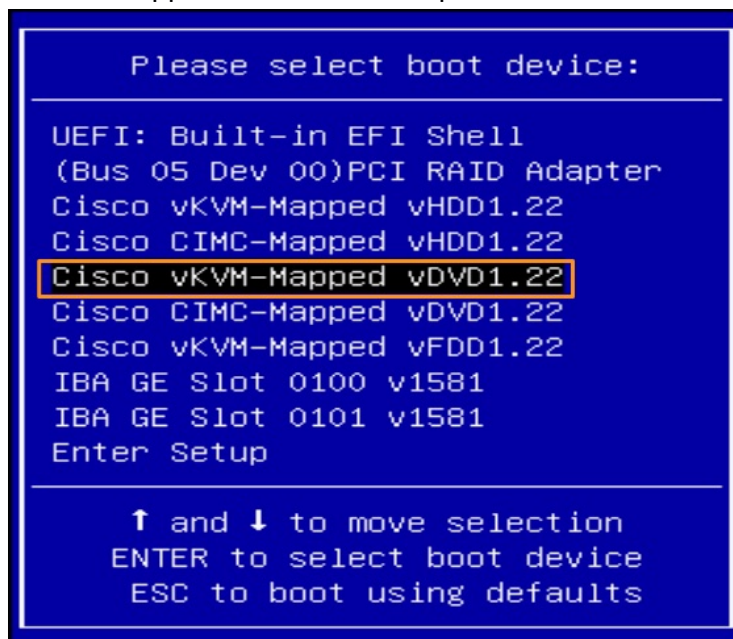
- Reboot the system by selecting **Power > Power Cycle System (cold boot)**.



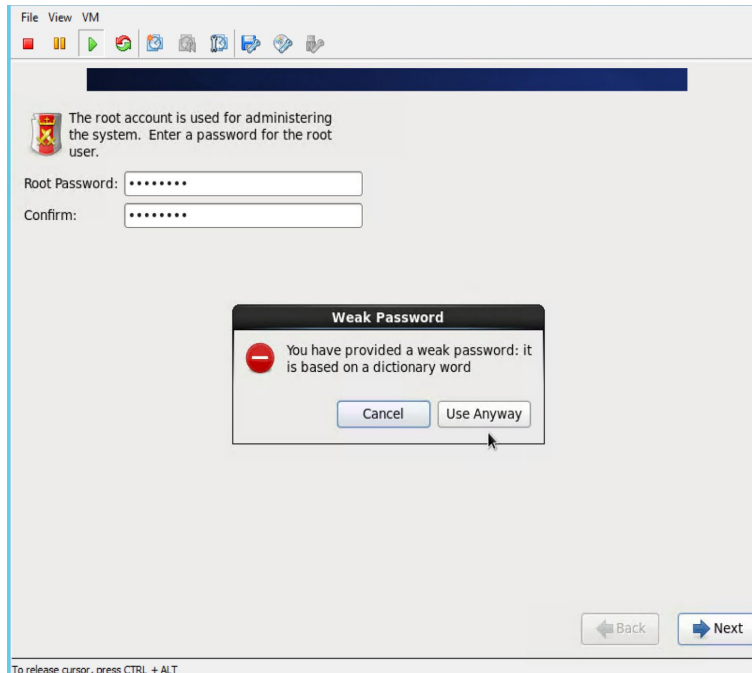
12. Once the reboot is underway, the screen below will display. Press (F6) to enter the Boot Menu.



13. Select the Cisco vKVM-Mapped vDVD drive and press **ENTER**.



- As soon as the ISO image is loaded. You need to provide root password to proceed the installation and click “Next”

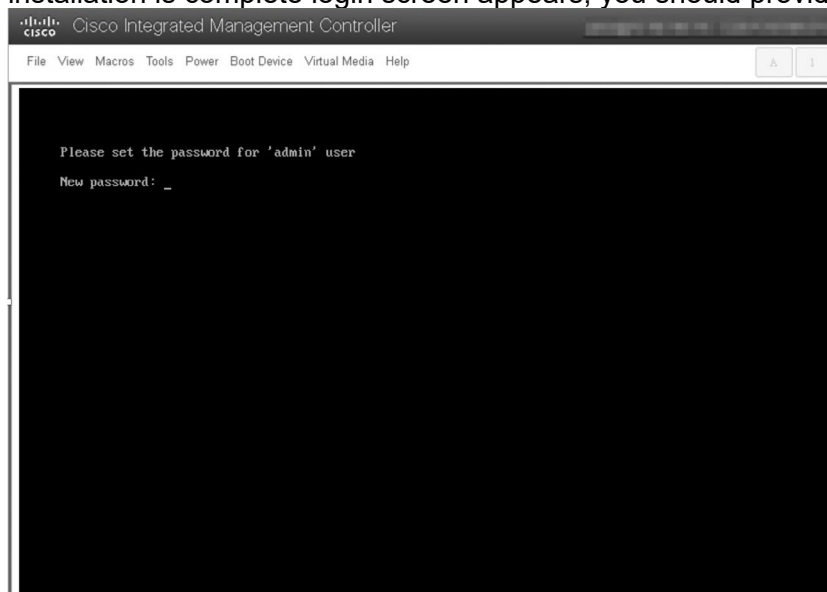


Note: Same password cannot be used for login after installation, user need to enable root account from adminshell and new password will be generated.

- Allow the installation to complete, there are two intermediate reboots after installation. After this, the CSPC software will be fully installed.

Note: Ensure that the computer runs on the KVM session, do not turn off or lose network connection during the installation and connection should be active until first reboot is completed.

- After installation is complete login screen appears, you should provide new admin login password.



- Select **1** to configure IPv4 address or select **2** to configure IPv6 address.



```
Please enter your choice from the below options to configure the appliance :

1. IPv4 Configuration
2. IPv6 Configuration
3. Go to Command Line (Shell)

Enter your choice :
```

18. Once you configure IP Address, you will be able to access the box with assigned IP-address via ssh CLI or Web-UI (<https://<ip-address>:8001>)



Americas Headquarters
Cisco Systems, Inc.
San Jose, CA

Asia Pacific Headquarters
Cisco Systems (USA) Pte. Ltd.
Singapore

Europe Headquarters
Cisco Systems International BV Amsterdam,
The Netherlands

Cisco has more than 200 offices worldwide. Addresses, phone numbers, and fax numbers are listed on the Cisco Website at www.cisco.com/go/offices.

Cisco and the Cisco Logo are trademarks of Cisco Systems, Inc. and/or its affiliates in the U.S. and other countries. A listing of Cisco's trademarks can be found at www.cisco.com/go/trademarks. Third party trademarks mentioned are the property of their respective owners. The use of the word partner does not imply a partnership relationship between Cisco and any other company. (1005R)

Printed in USA

10/2021