

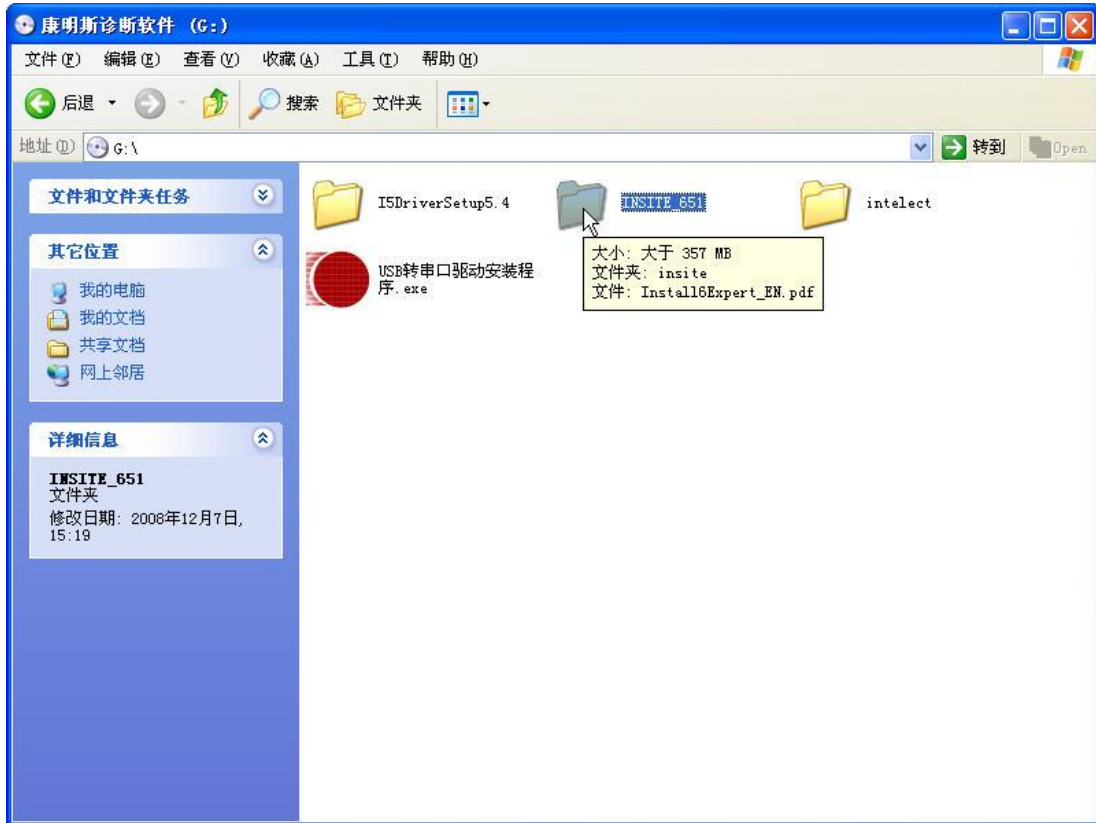
# cummins inline 5 diagnosis software setup manual

## Chapter 1 Cummins inline 5 diagnostic software installation

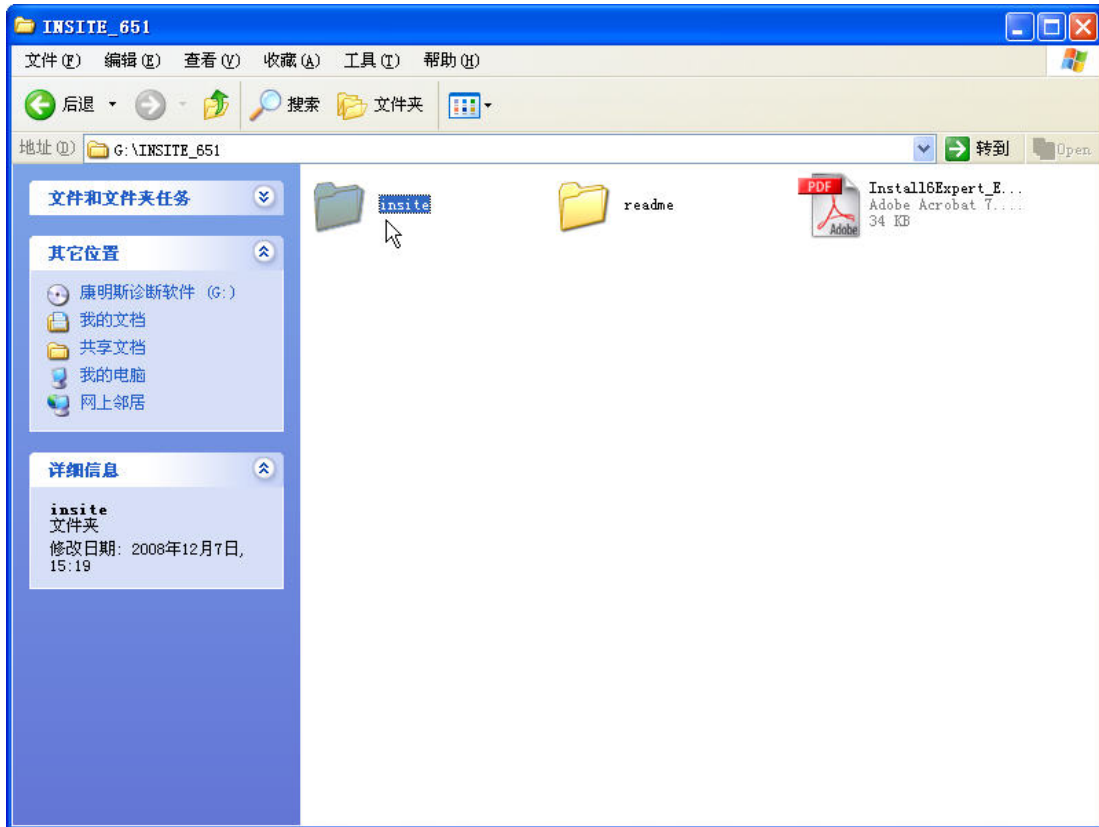
- 1.put cummins inline 5 diagnostic software DVD into CD-Rom, double click "cummins diagnostic software" icon



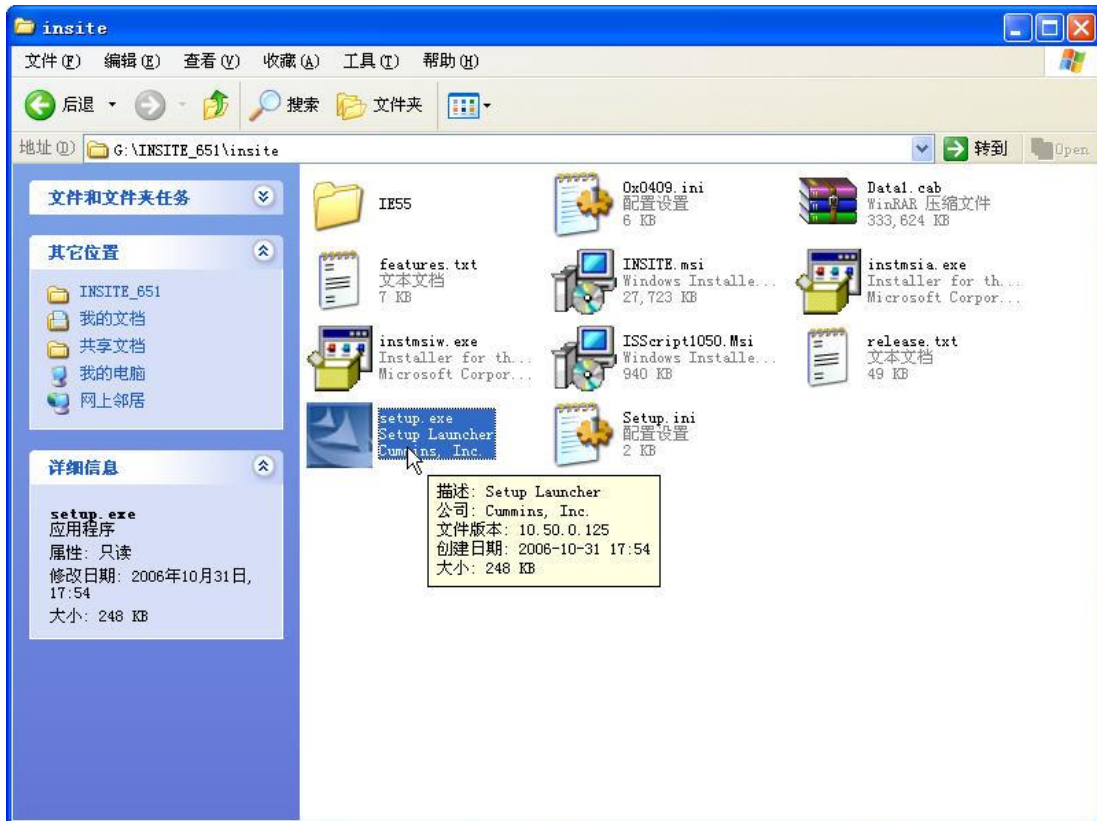
- 2.double click "INSITE\_651"



3. Double click folder "insite" as follows



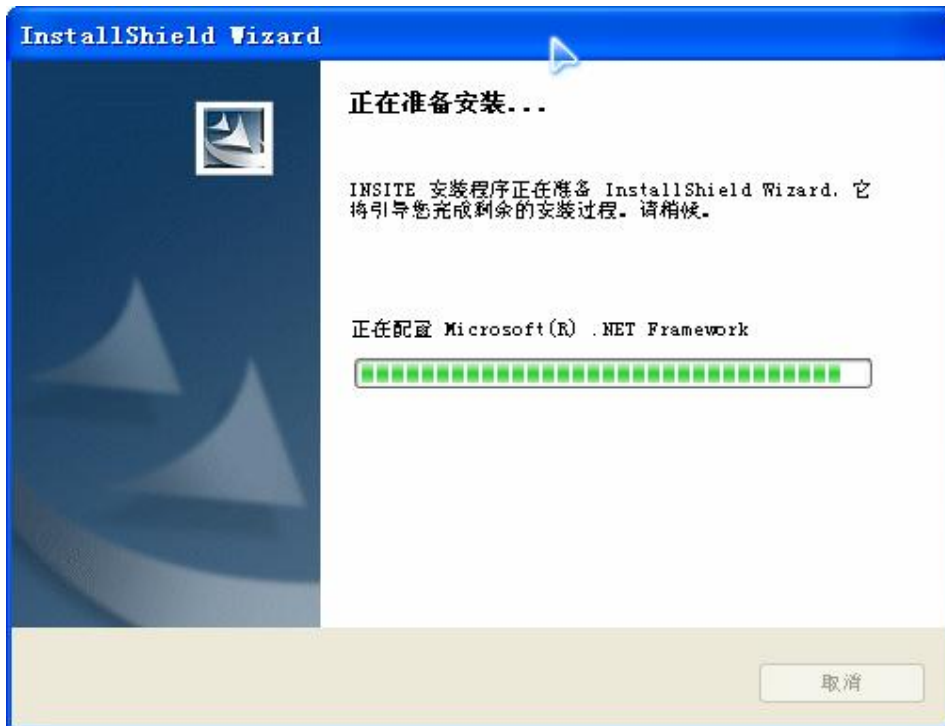
4. Double click "setup.exe"



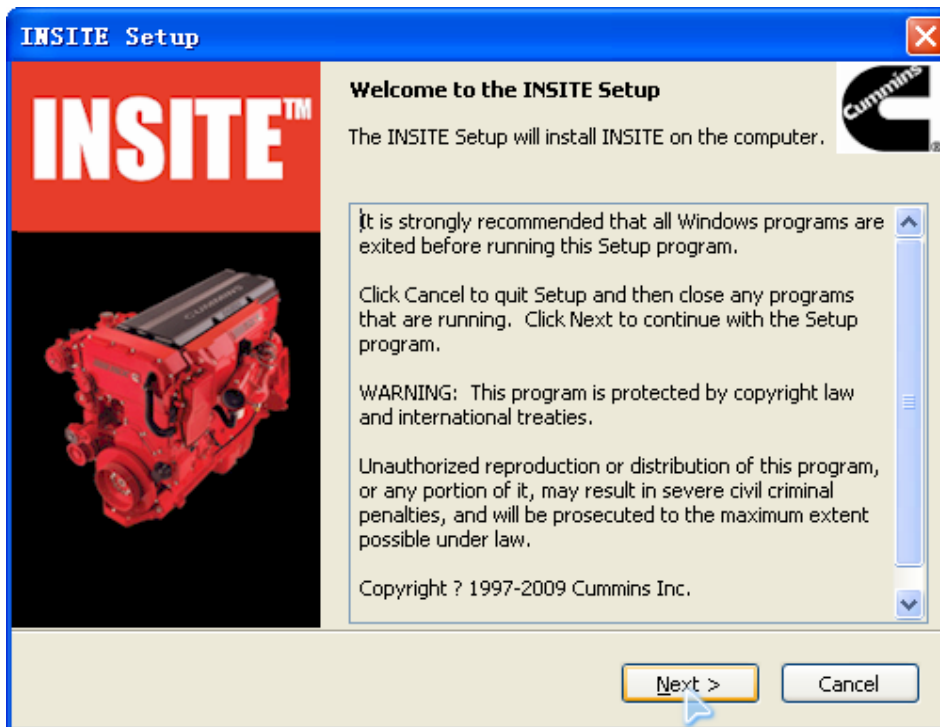
## 5. Choose the operation language



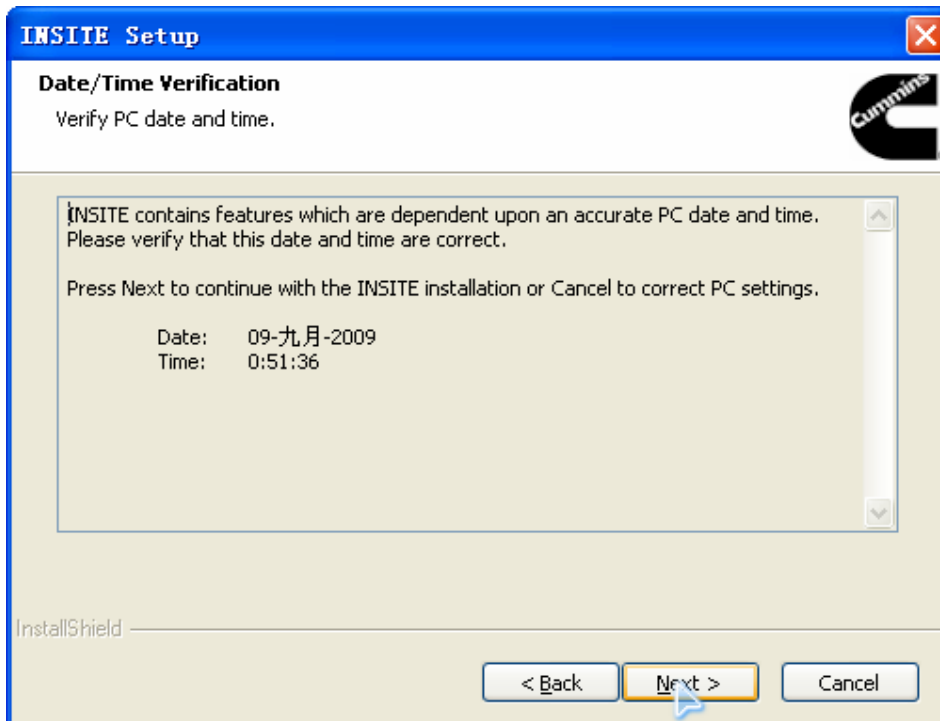
6.installation software is initializing, it needs to wait for some minutes



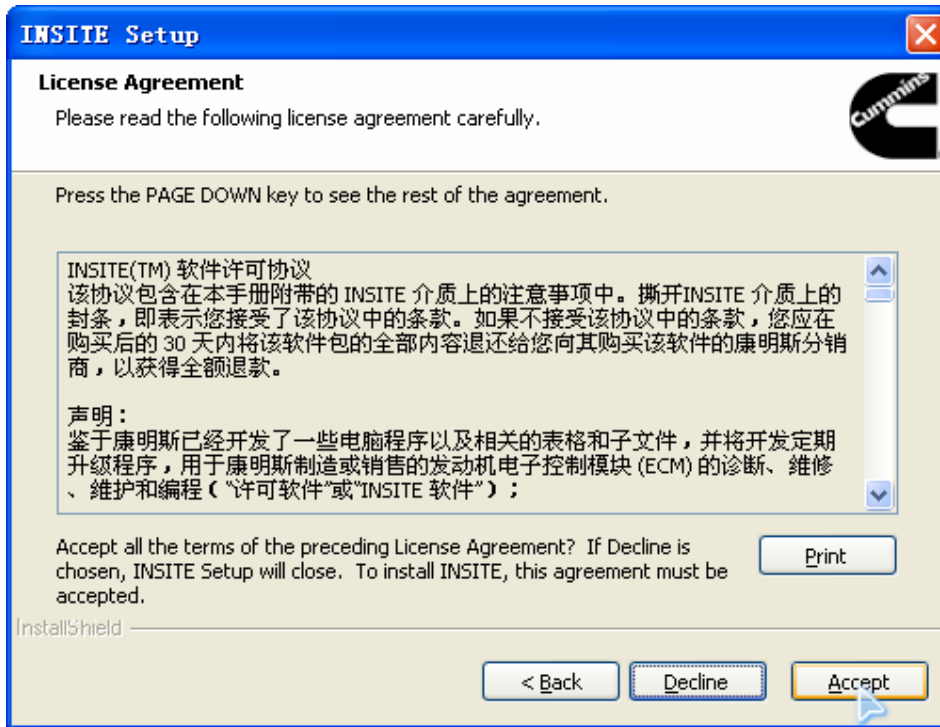
7.double click "Next"



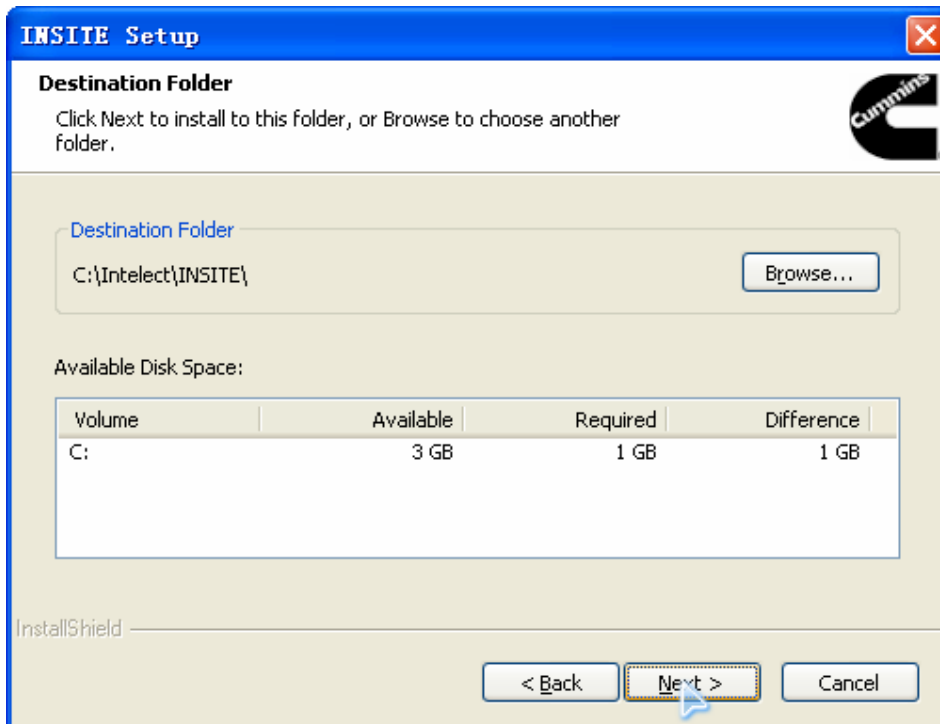
8. Click "Next"



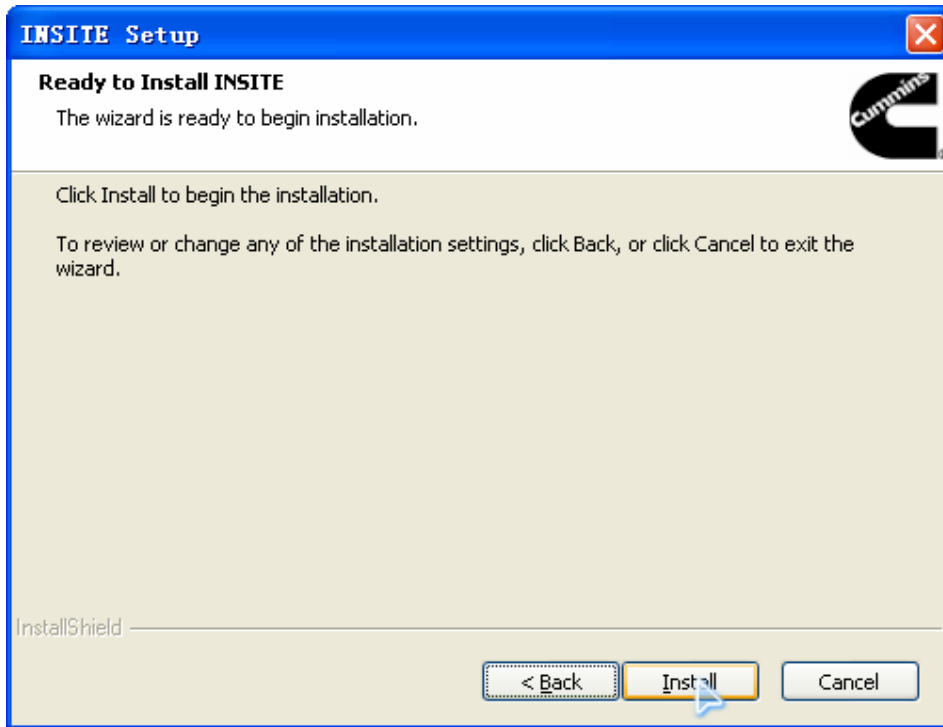
9. Click "Accept"



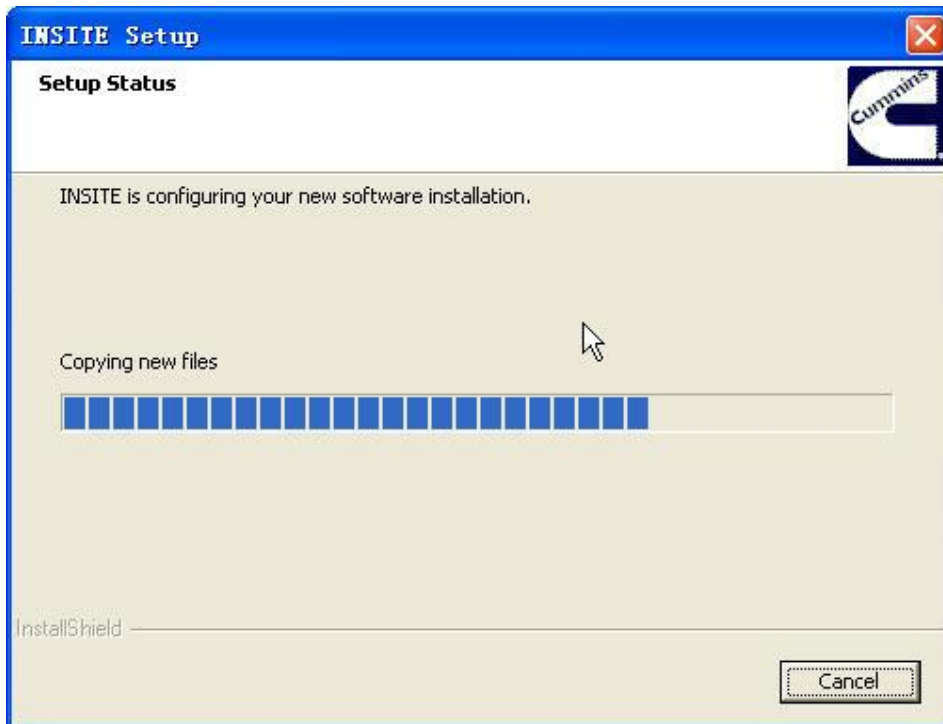
10. Highly recommend you install the software into the default "Destination Folder"  
 Click Next



11. Click "Install"

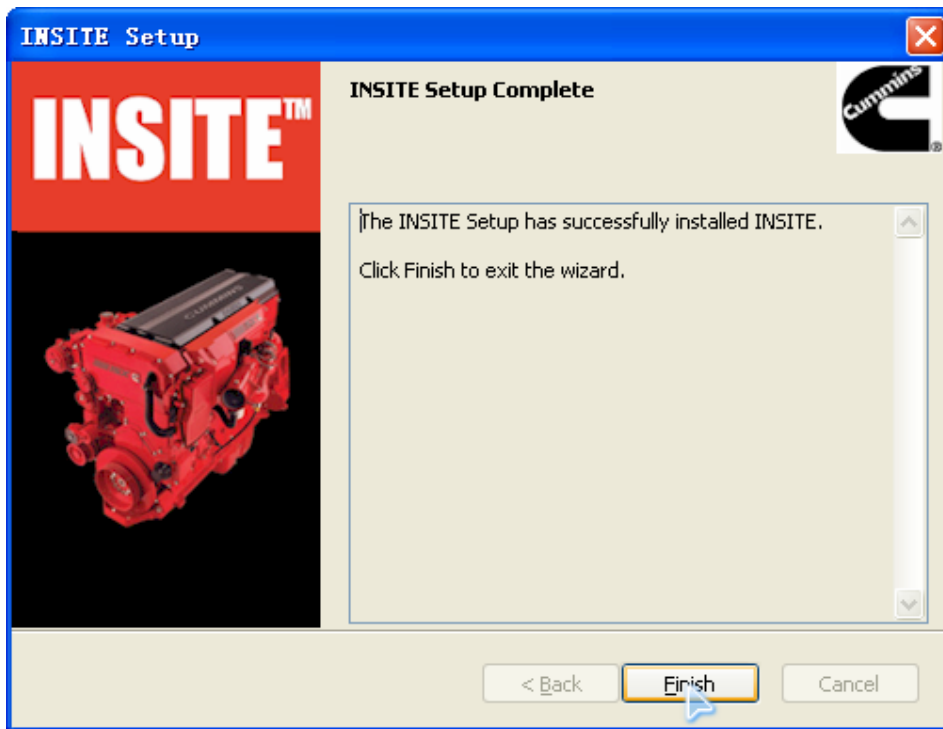


12. software install is working, you have to wait about 5 minutes



13. Finish installation, click "Finish"



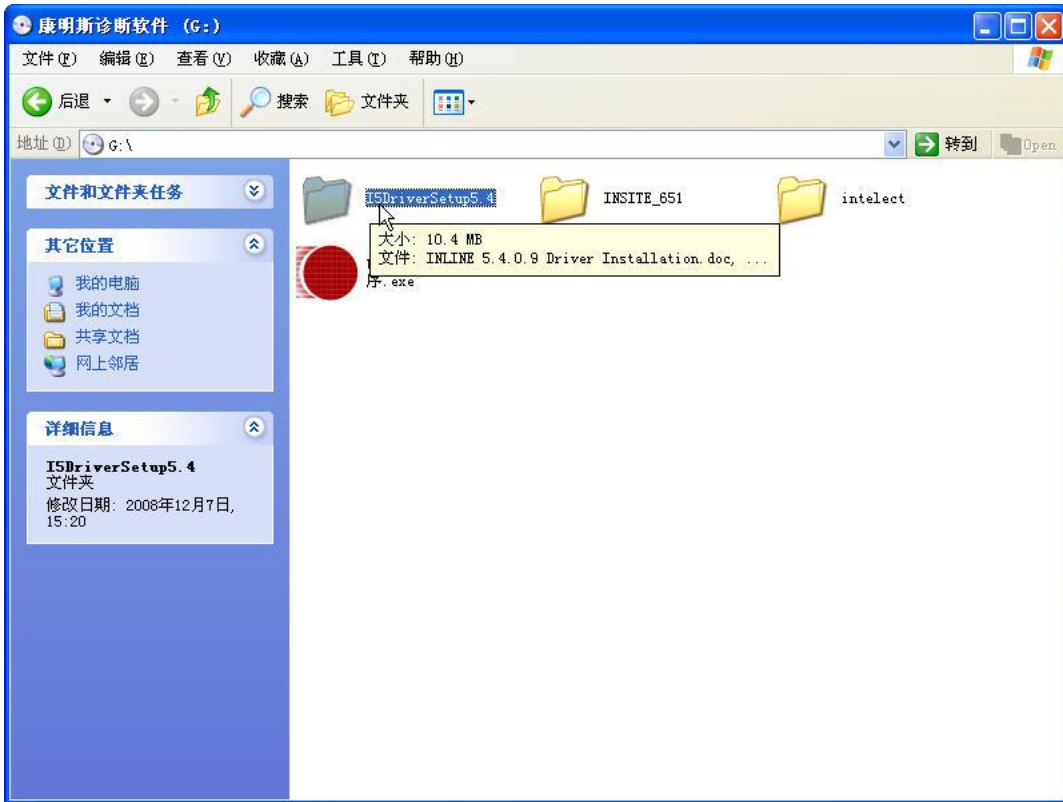


## Chapter two Cummins Driver installation

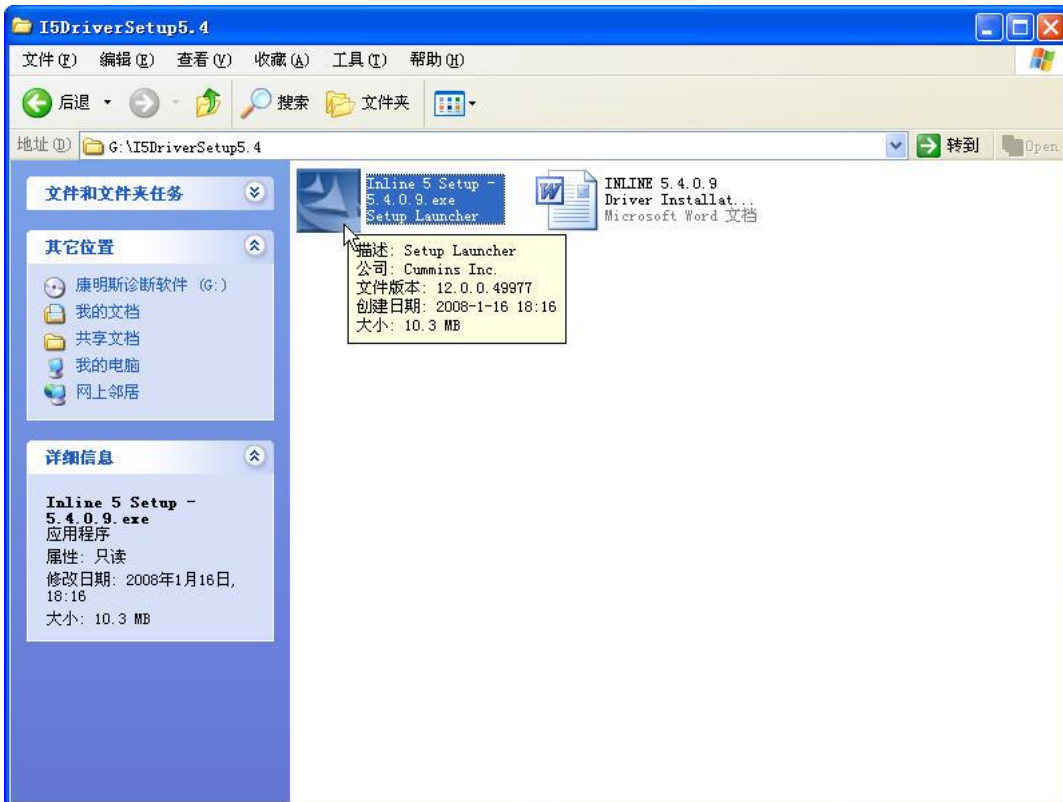
1. put cummins inline5 diagnostic software DVD into CD-ROM  
double click "Cummins5 diagnostic software" icon



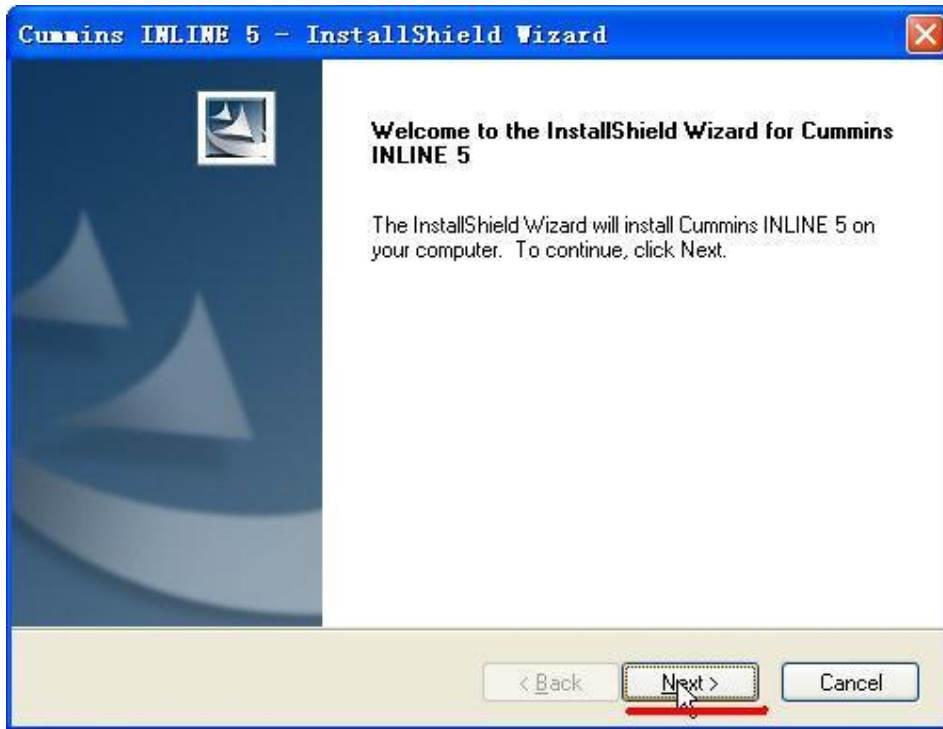
2.double click "I5DriverSetup5.4"



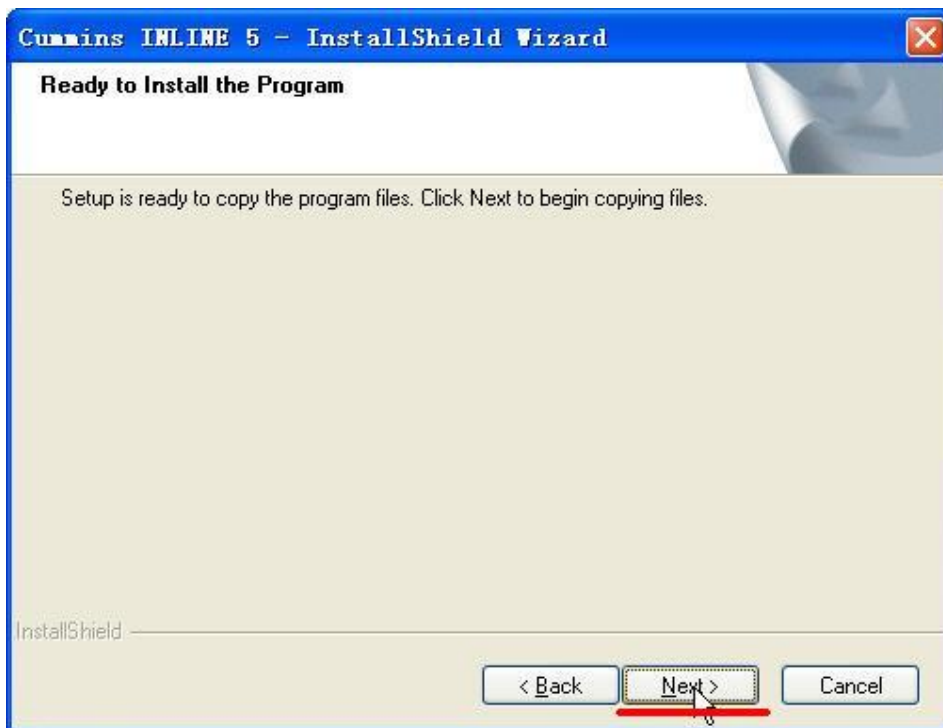
3. Double click "Inline 5 Setup-5.4.0.9" to run the software



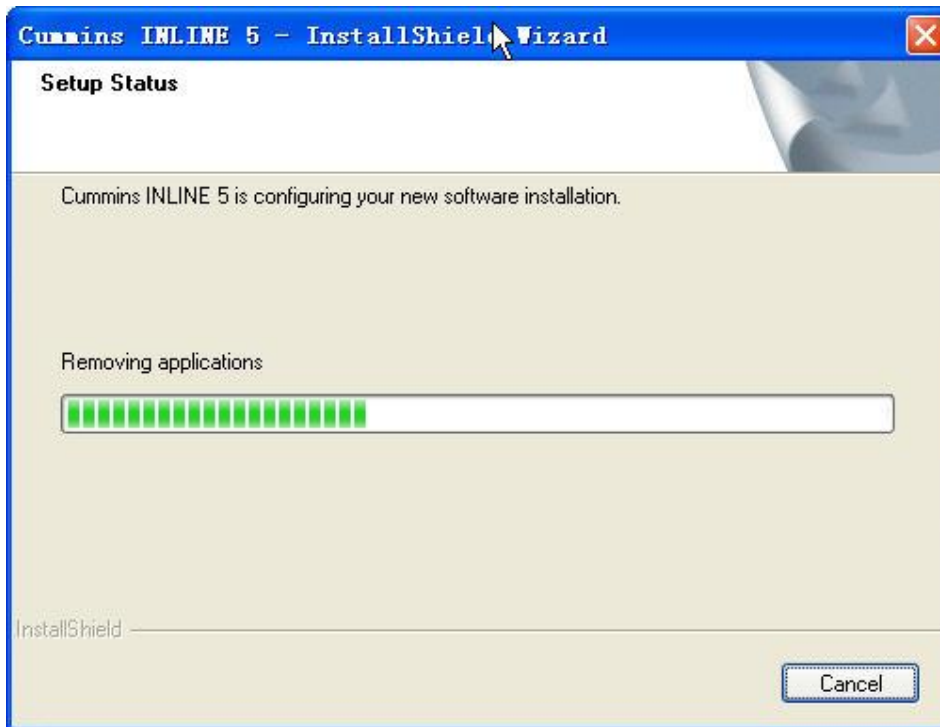
#### 4. Click Next



#### 5. Click Next



#### 6. Start to install, please wait about 2 minutes



7. Installation complete, click "Finish" button



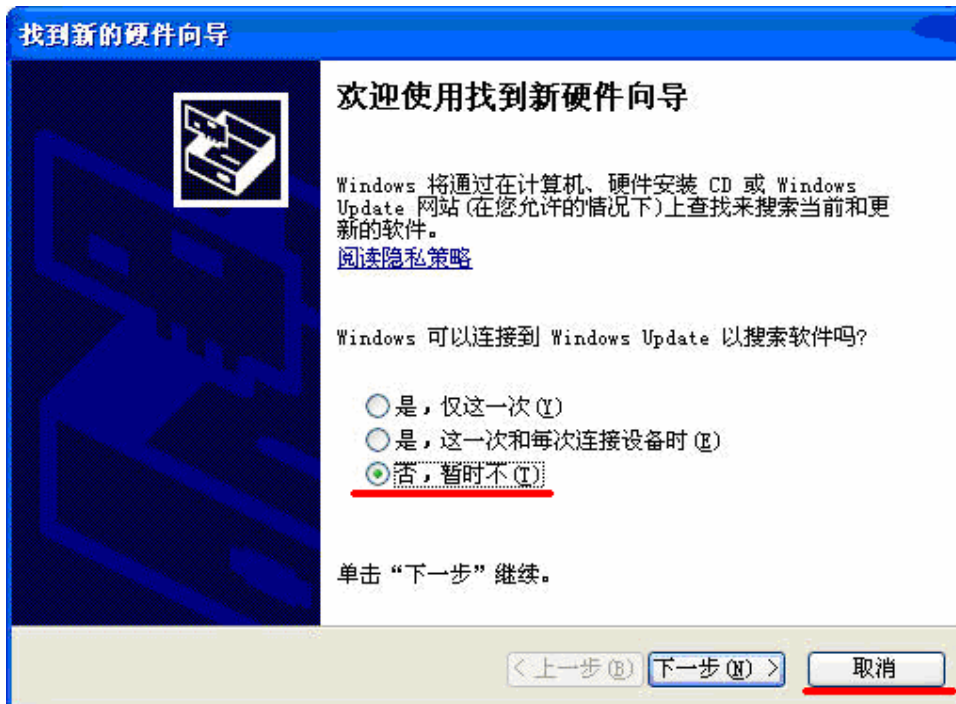
## Chapter 3 Cummins main head driver software installation and settings

1. Use USB Cable to connect Cummins main head and computer as follows



2. The first time to install Cummins5 Driver software, it will pop-up a dialog box as follows; click "no,not now", then click "Cancel".

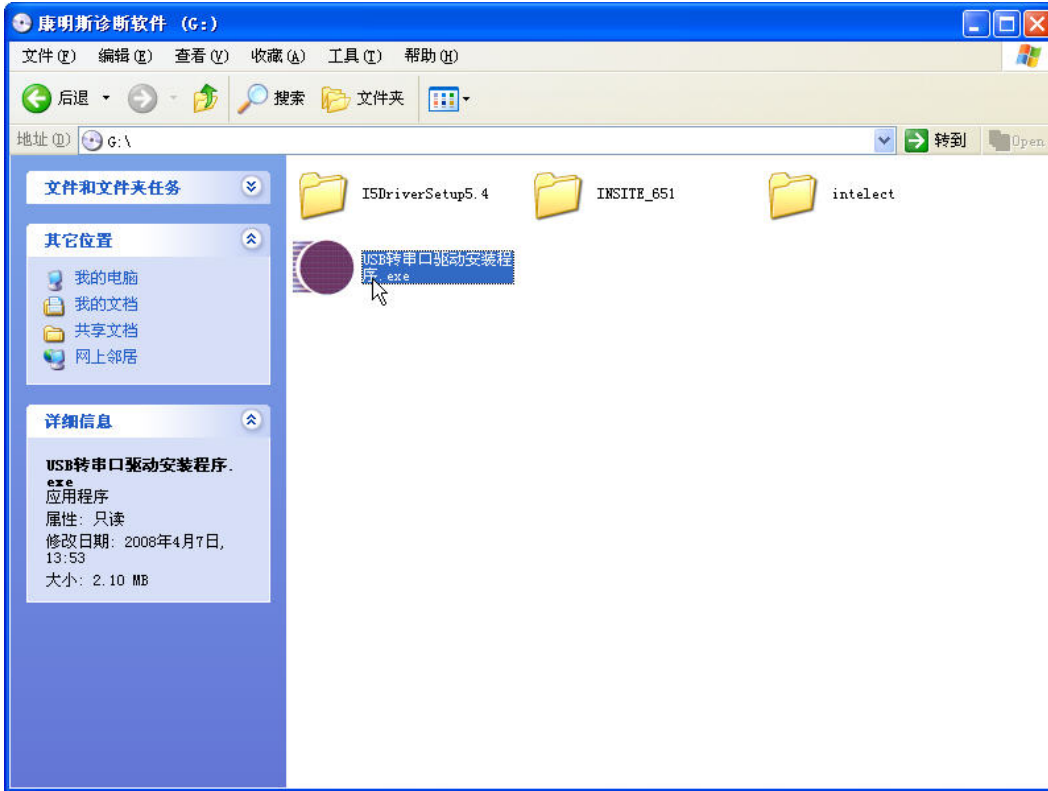




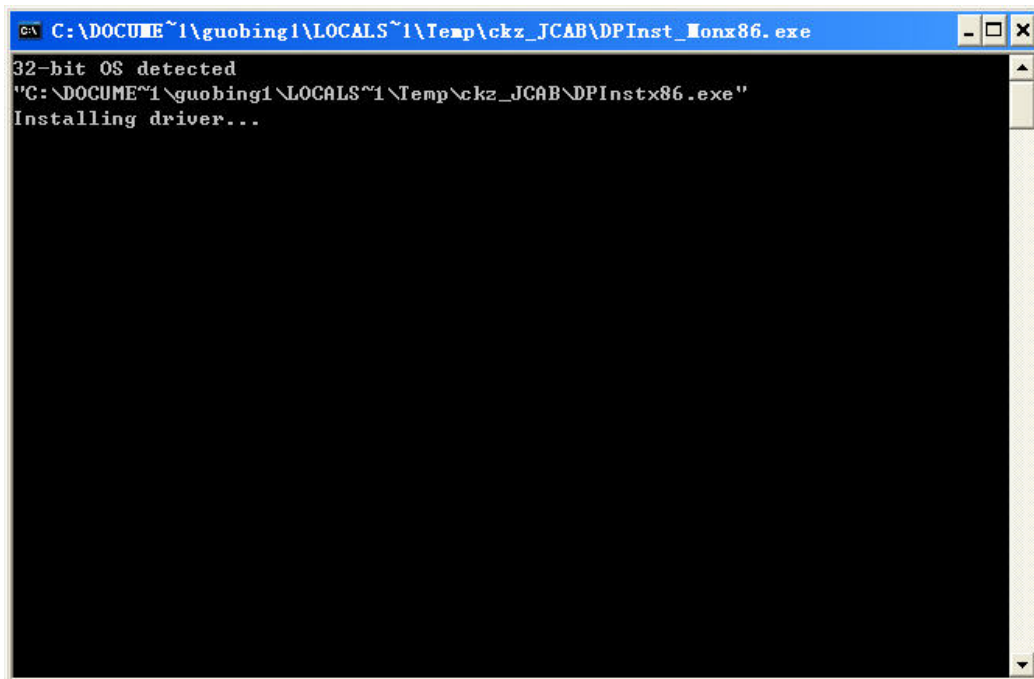
3. Double click "Cummin diagnostic software"



4. Double click "USB to Serial port driver setup"

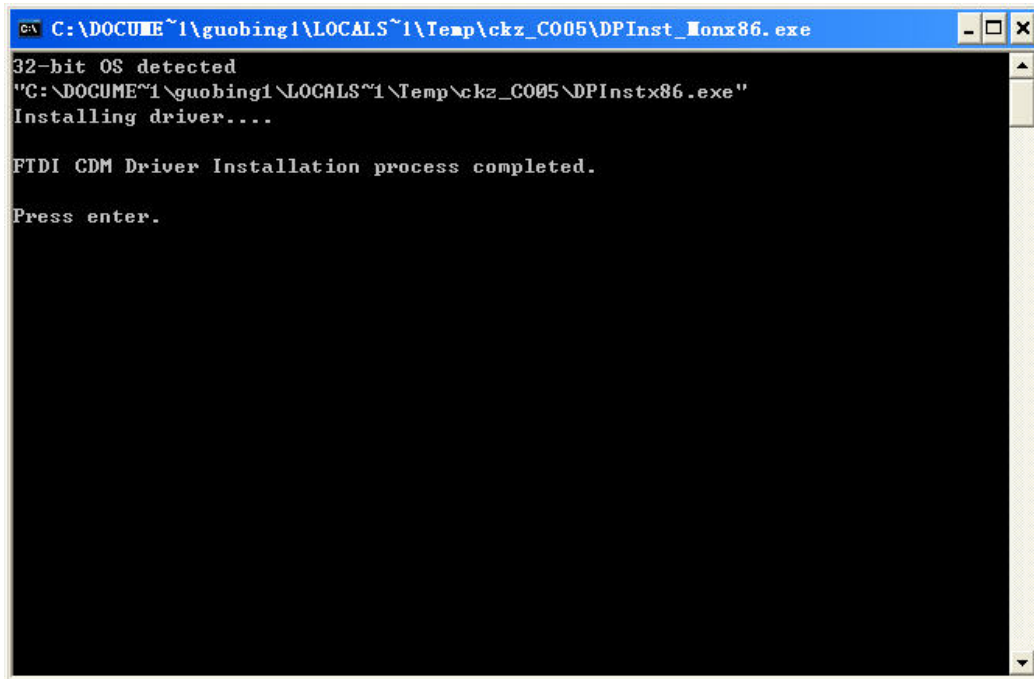


5. Start to install, please wait about 2 minutes



6. After driver installation complete, press "ENTER" to finish setup

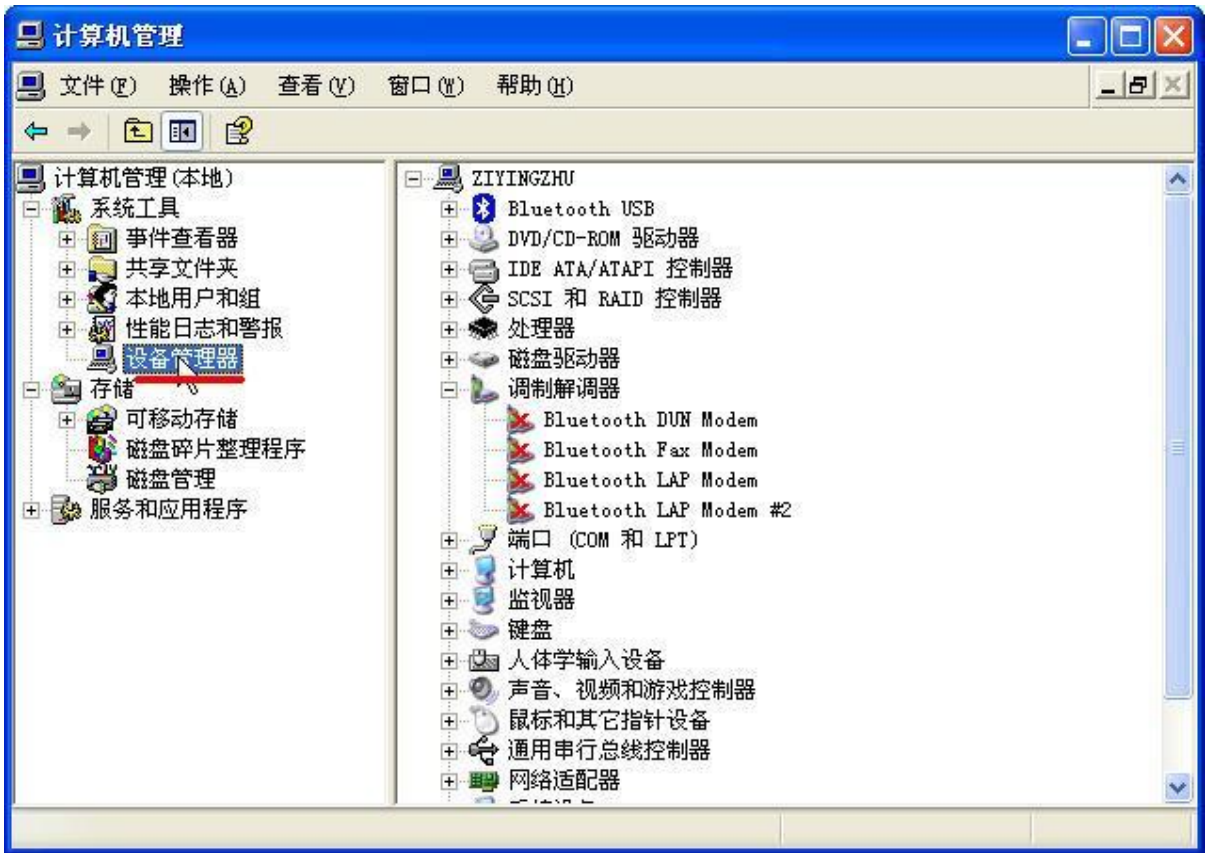




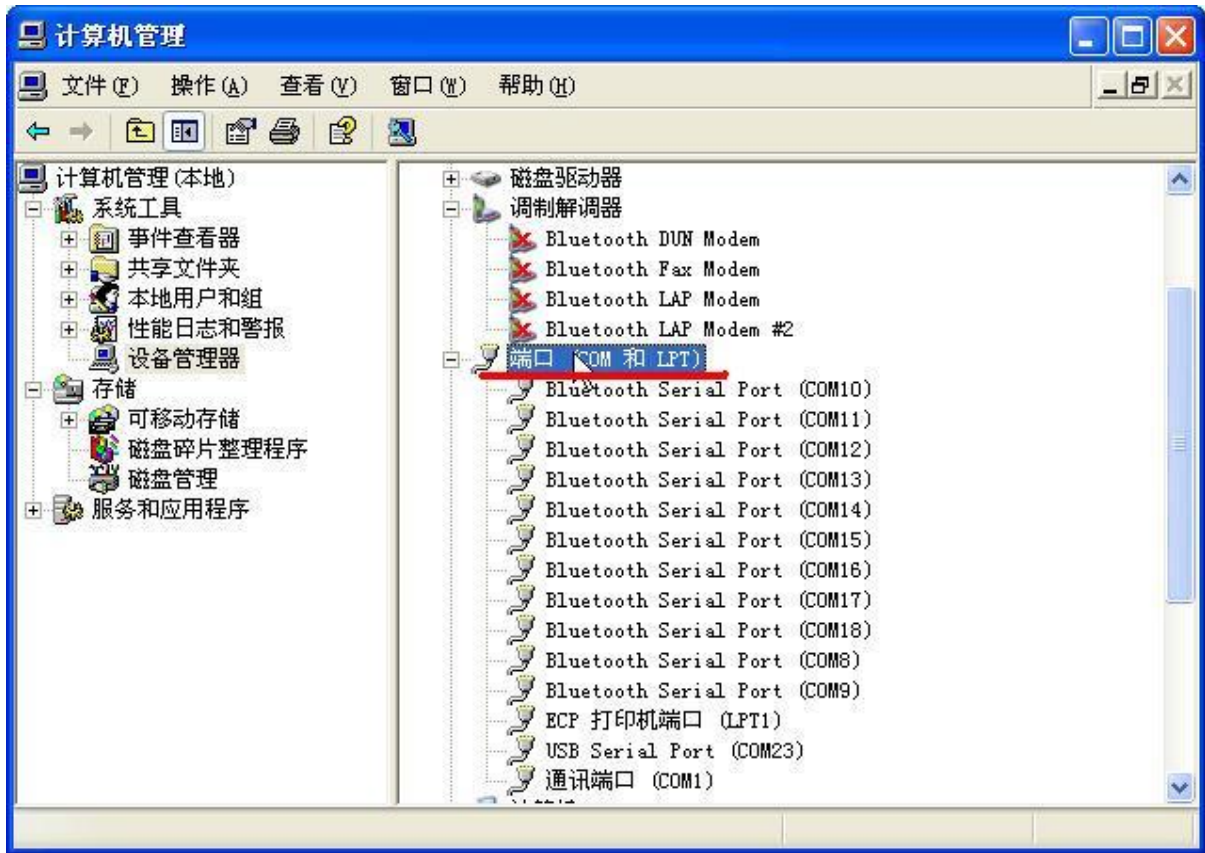
7. Right Click "My Computer" on the desktop, then enter into "Management"



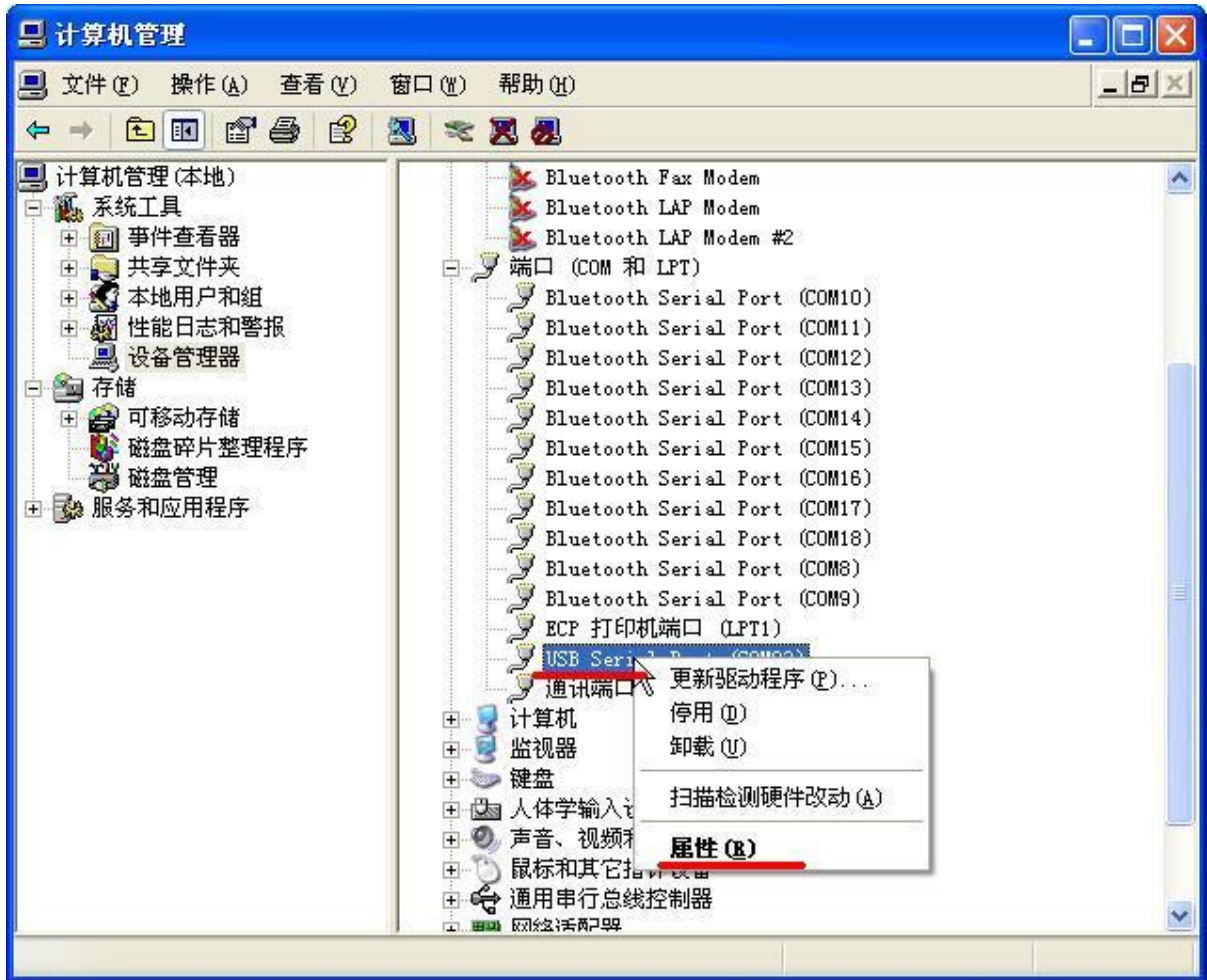
8. Click "Device Manager"



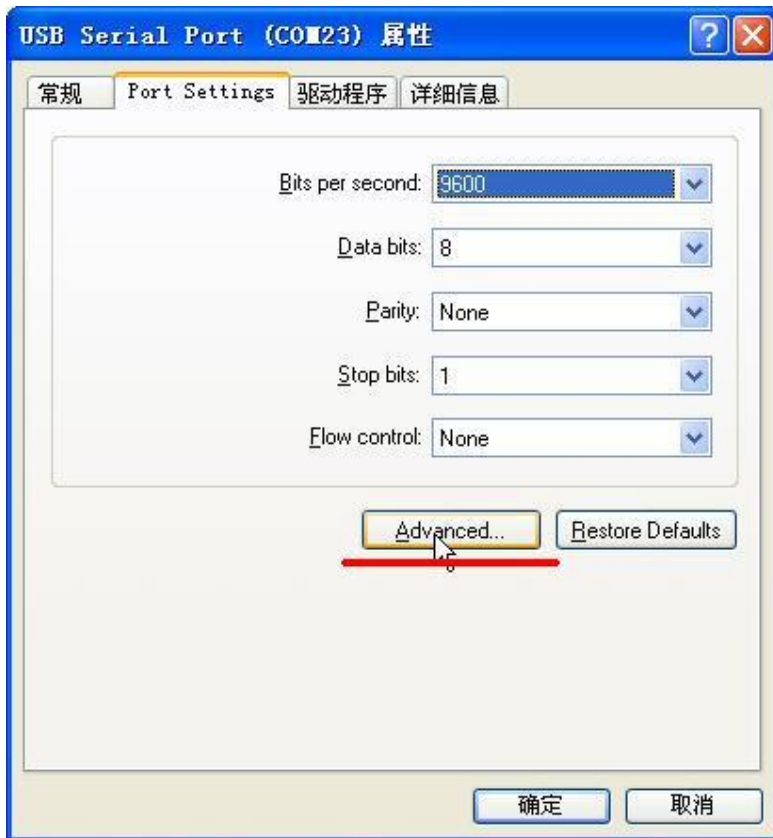
9. Click "Port(COM and LPT)



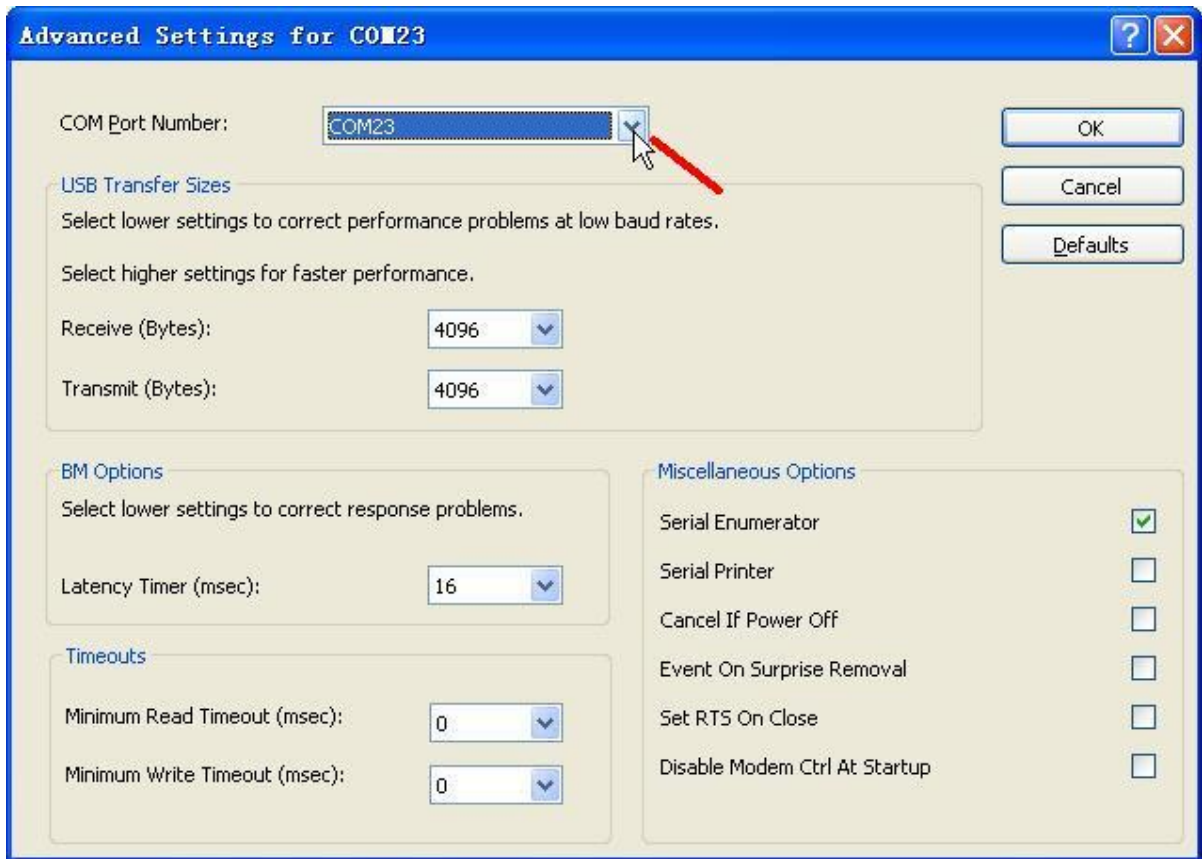
10. Right click "USB Serial Port" and select "Property"



11. Click "Advanced"

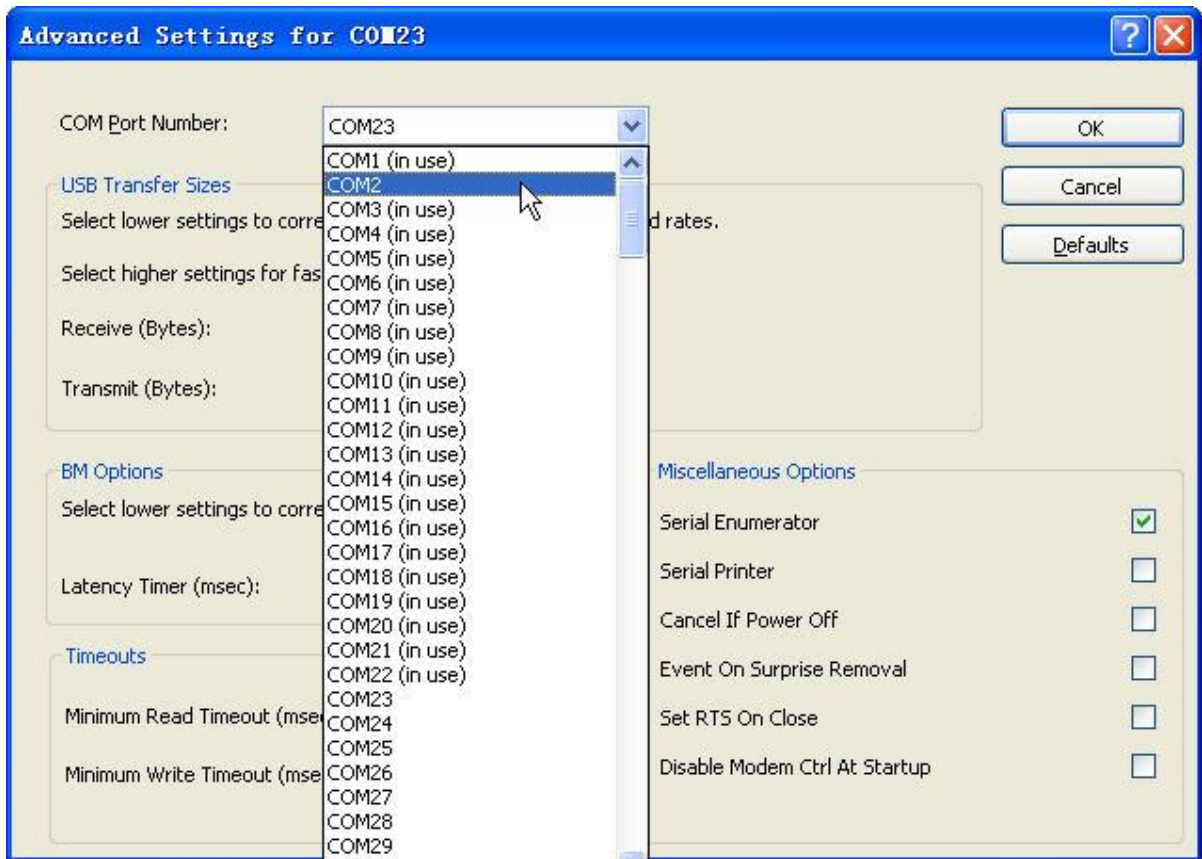


12. Choose COM Port Number, click the drop-down box as follows

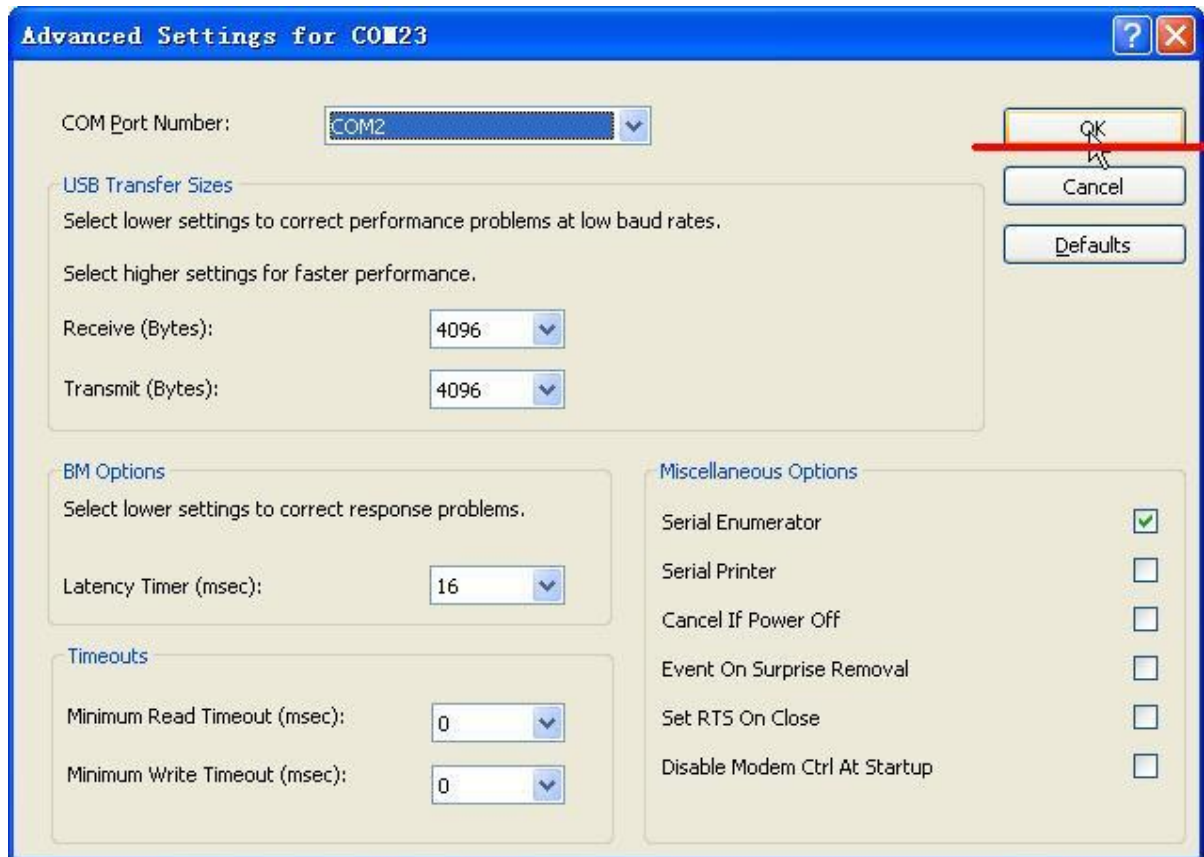


13. choose COM2





14. Click "OK"

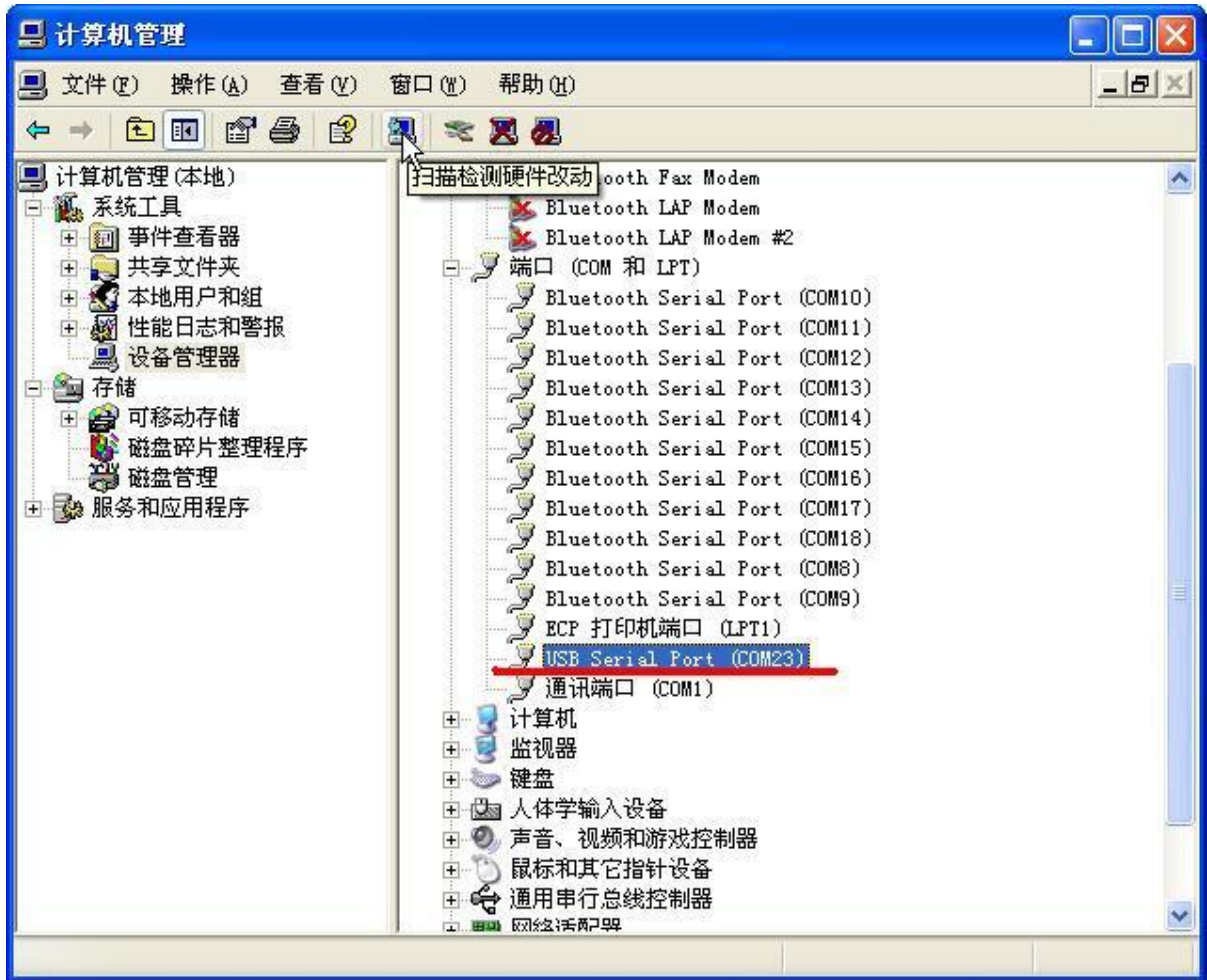


15. Click "Confirm"

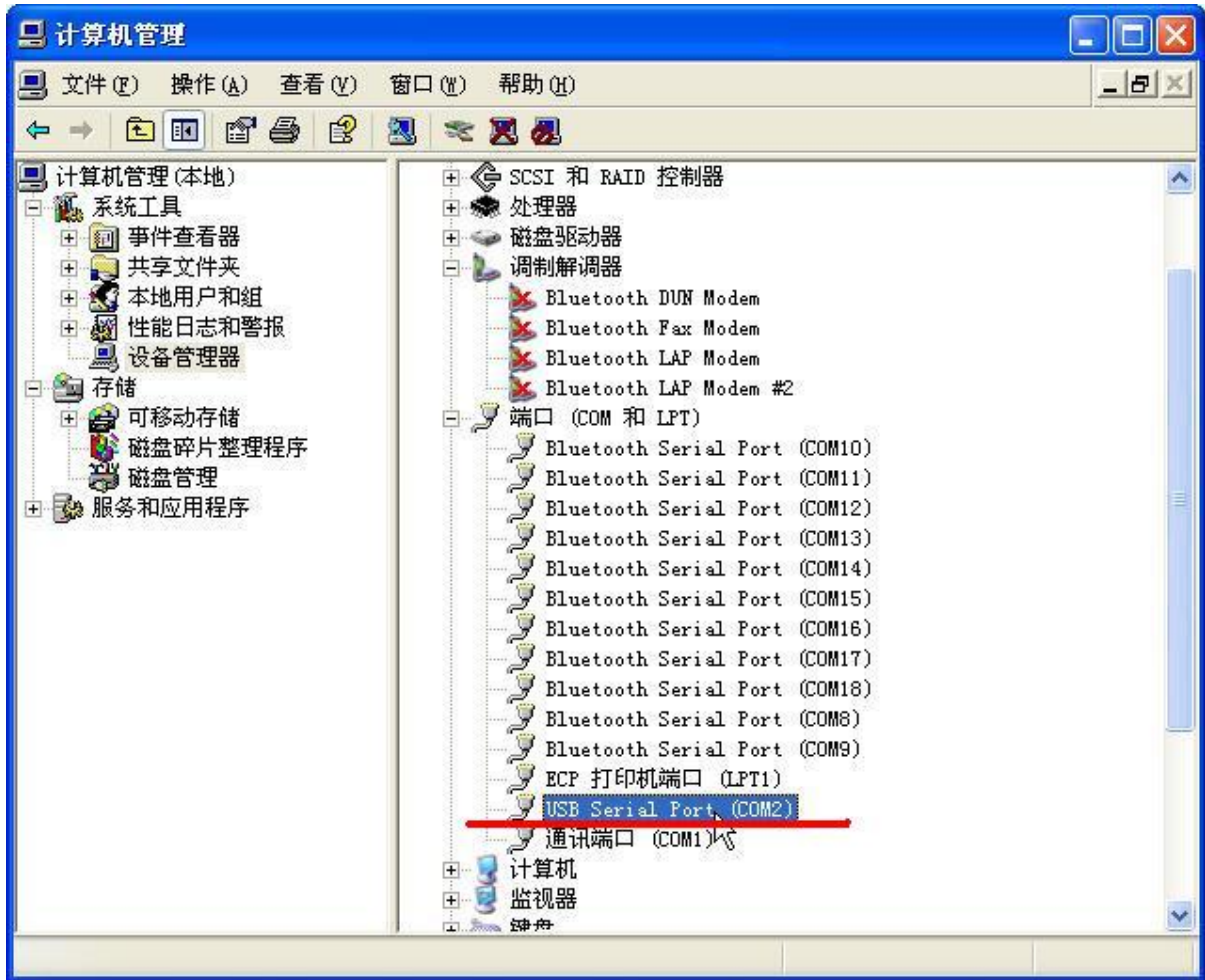




16. Click this icon as follows

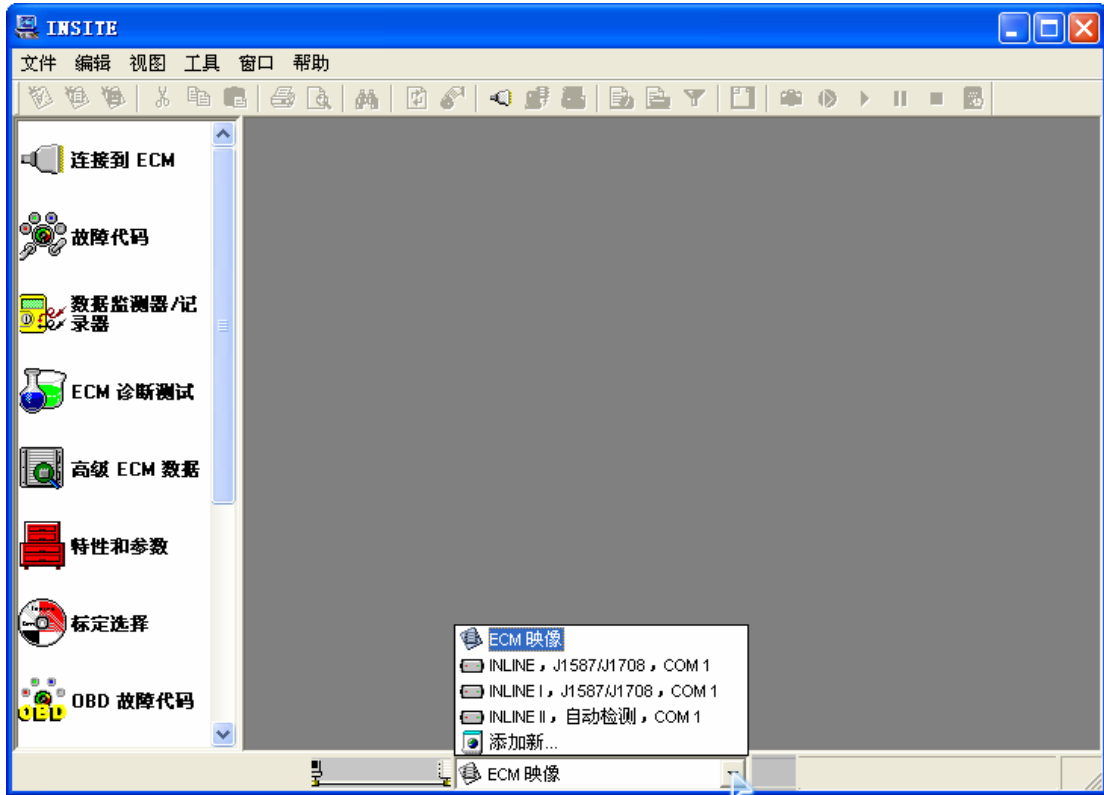


17.USB Serial Port is now COM2

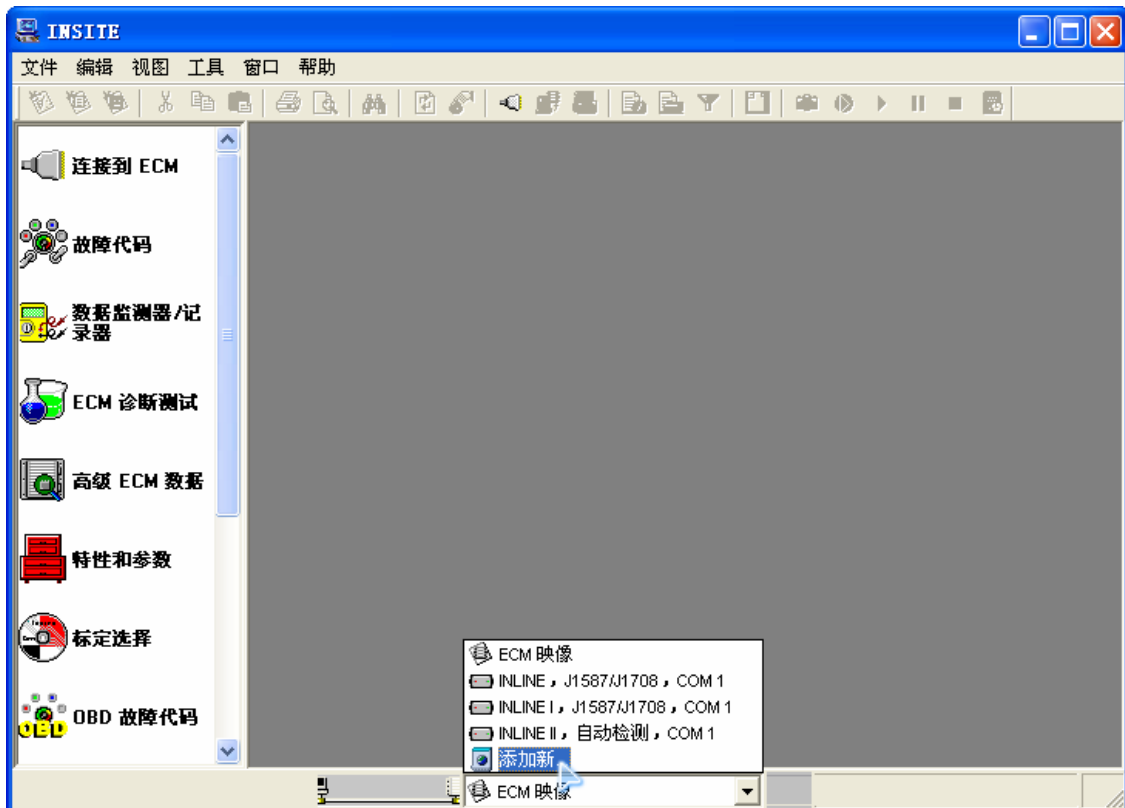


## Chapter 4 Cummins inline 5 connection settings

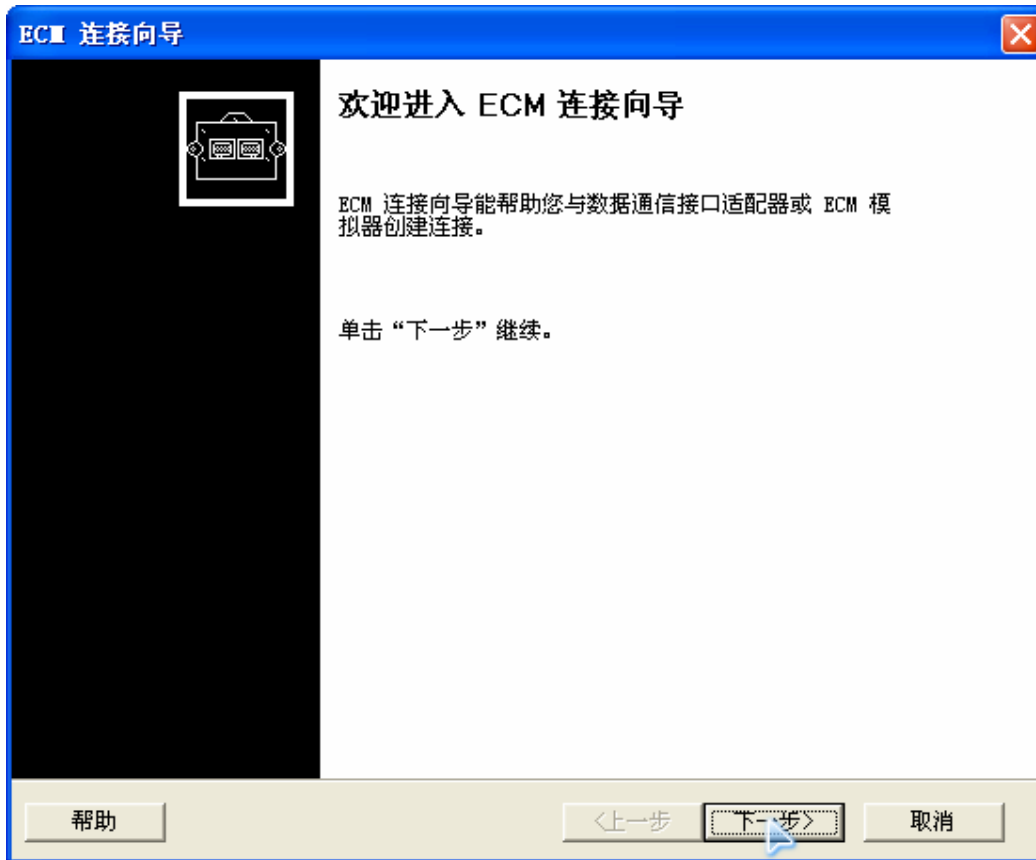
1. Connect Cummins inline 5 to computer, start diagnostic software, click drop-down list



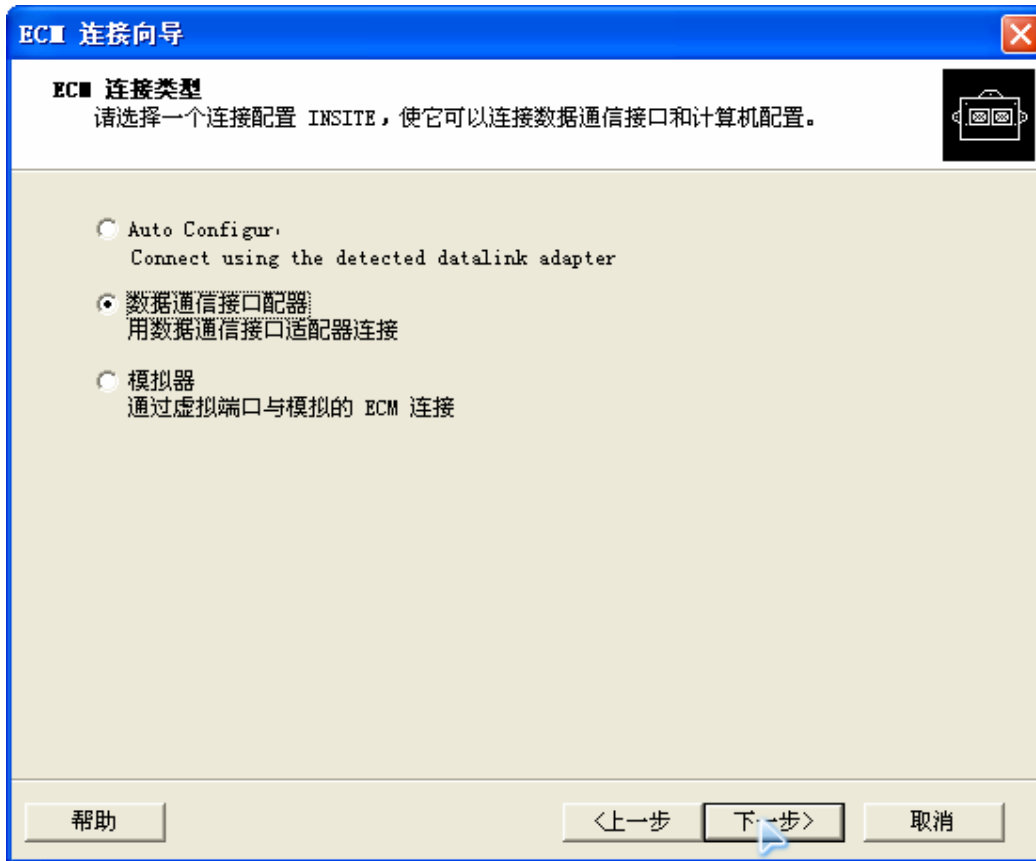
2. Click "Add New"



### 3. Click Next



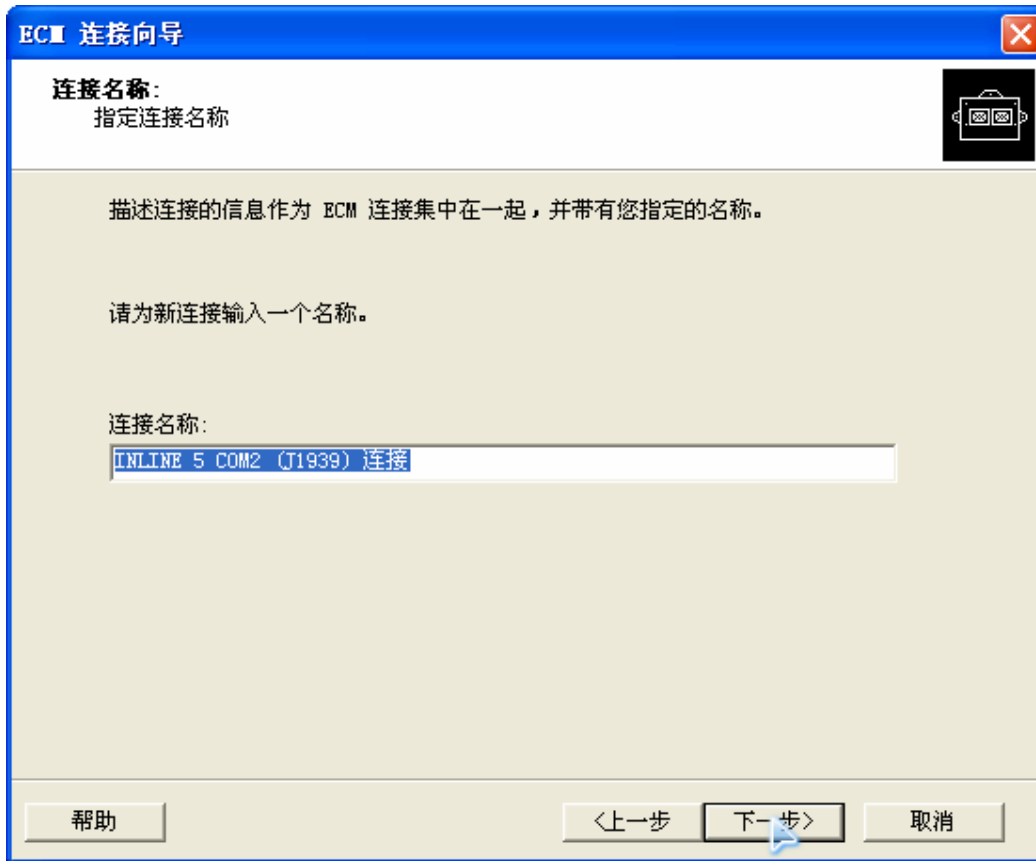
### 4. Select the second option, then click "Next"



5. Choose the right selection as the following settings, then click "Next"

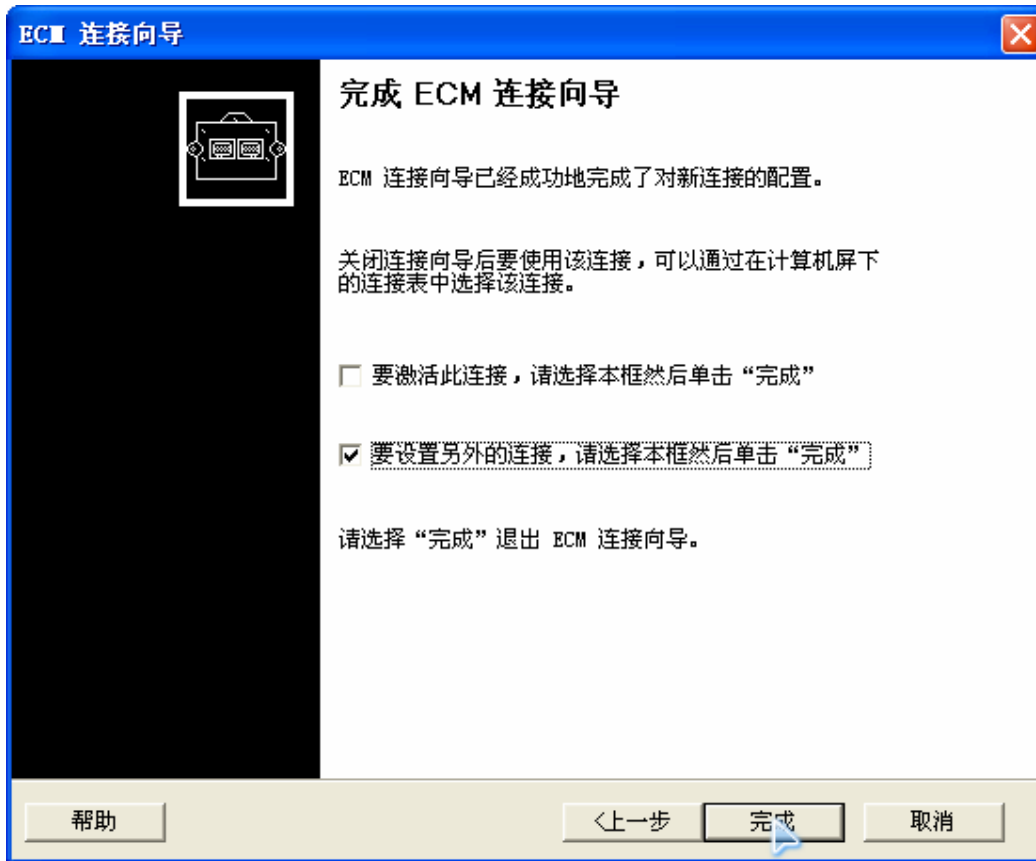


6. Click "Next"

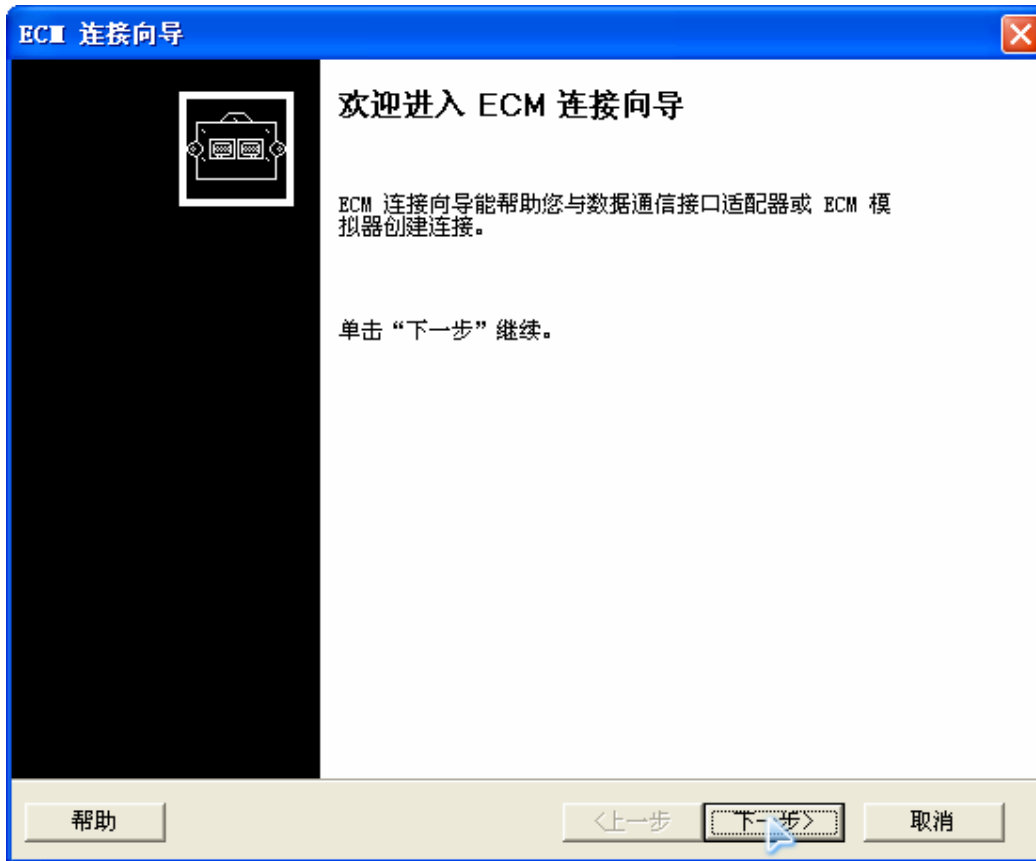


7. Click "Finish"

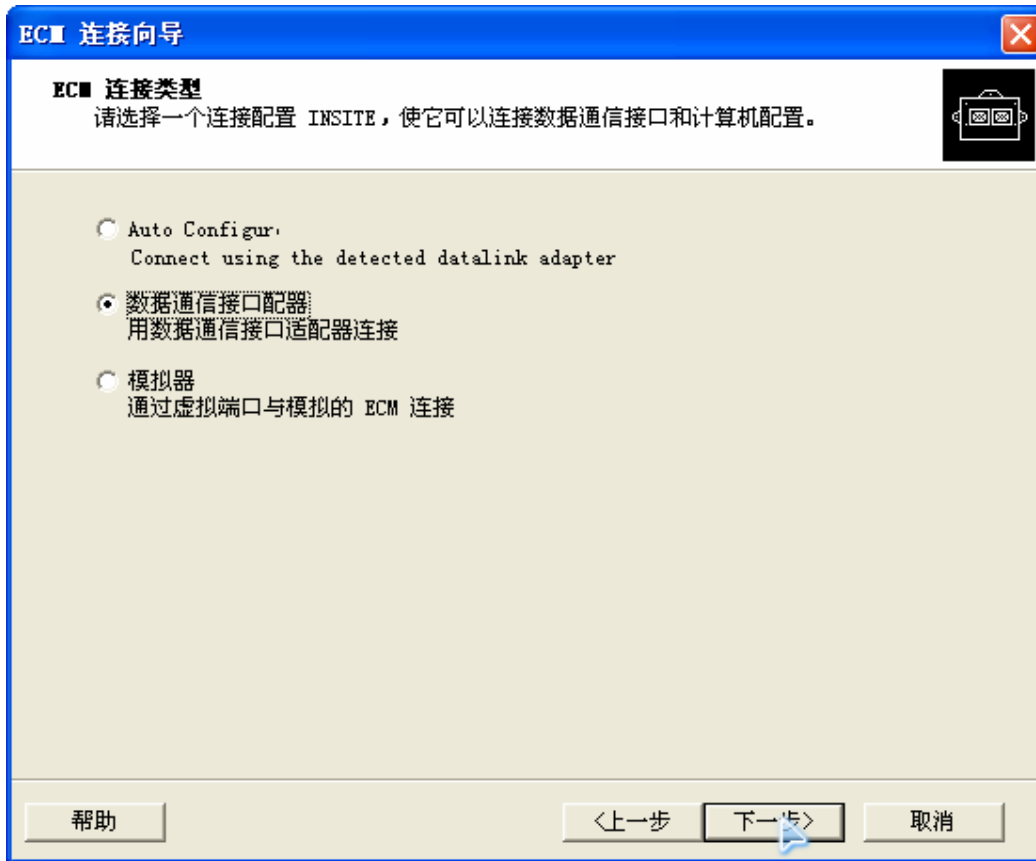




## 8. Click "Next"



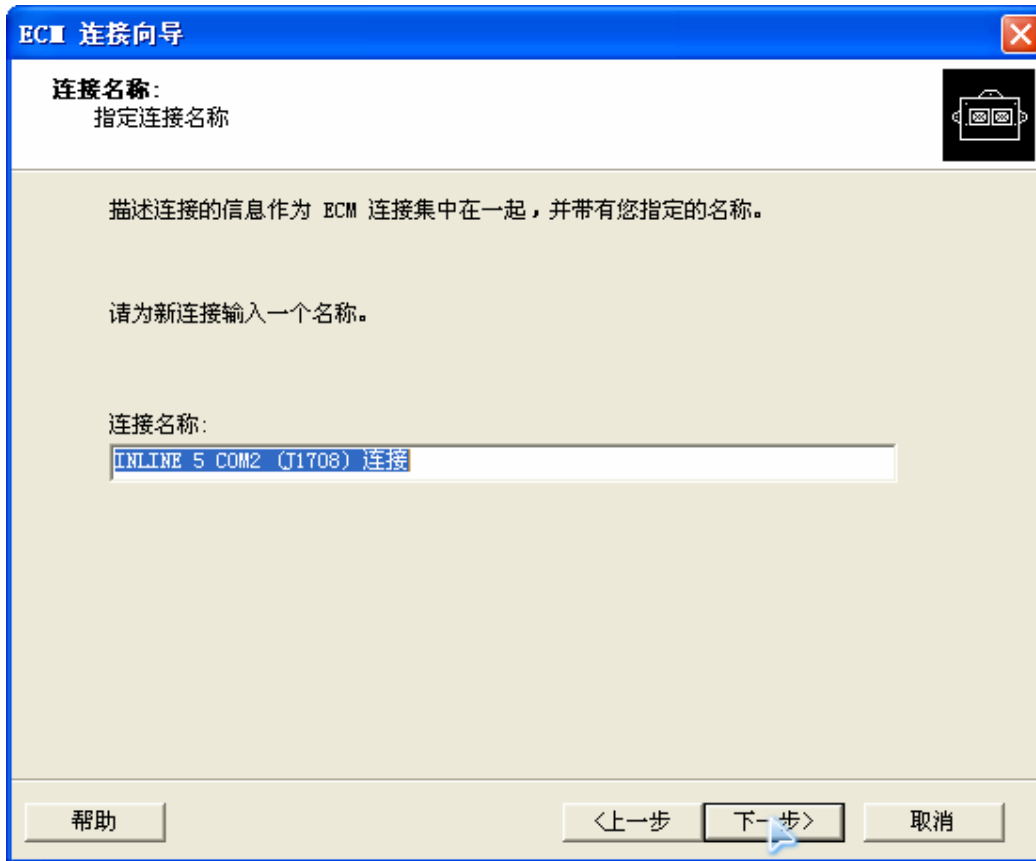
9. Choose the second option, then click "Next"



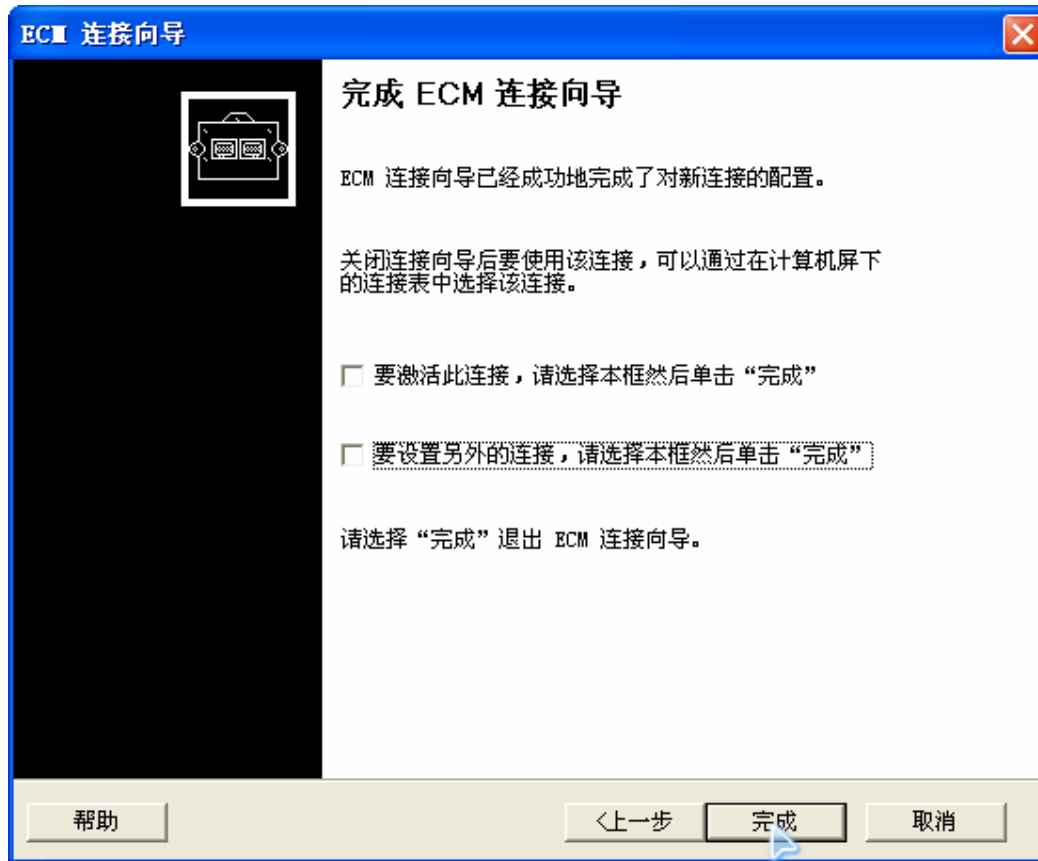
10. Follow the following settings.



11. Click "Next"



12. Click "Next"



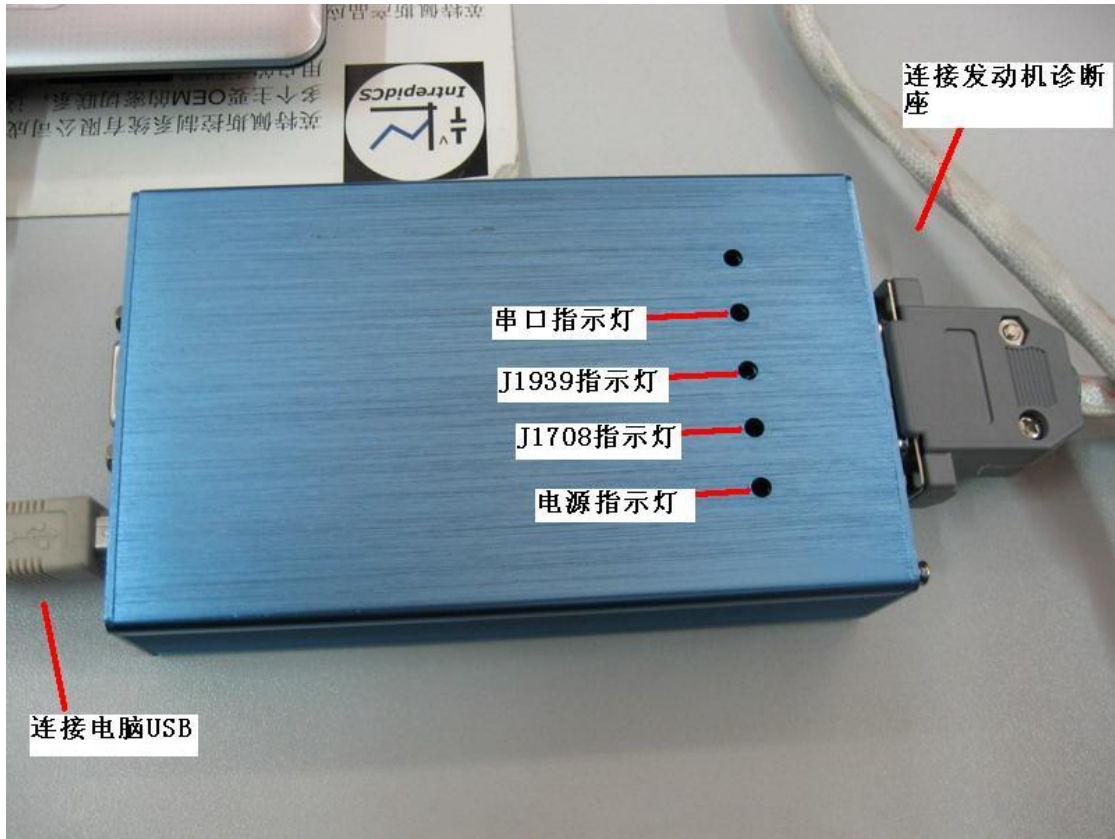
13. In the drop-down menu, two connections will be added as follows.





## Chapter 5 How to test Cummins engine

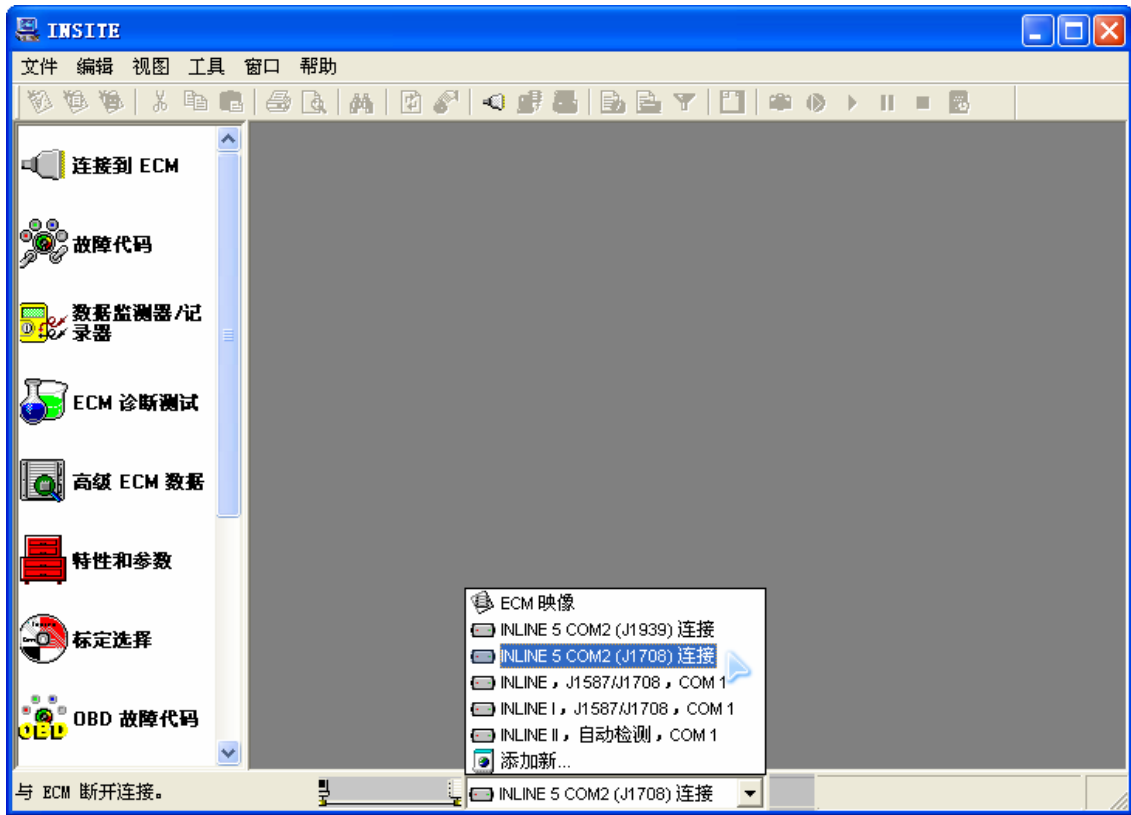
1. Connect well Cummins inline 5 as following shows, turn on Cummins Engine ignition key. At this time, the power indicator will keep on, J1939 indicator or J1708 indicator will flash



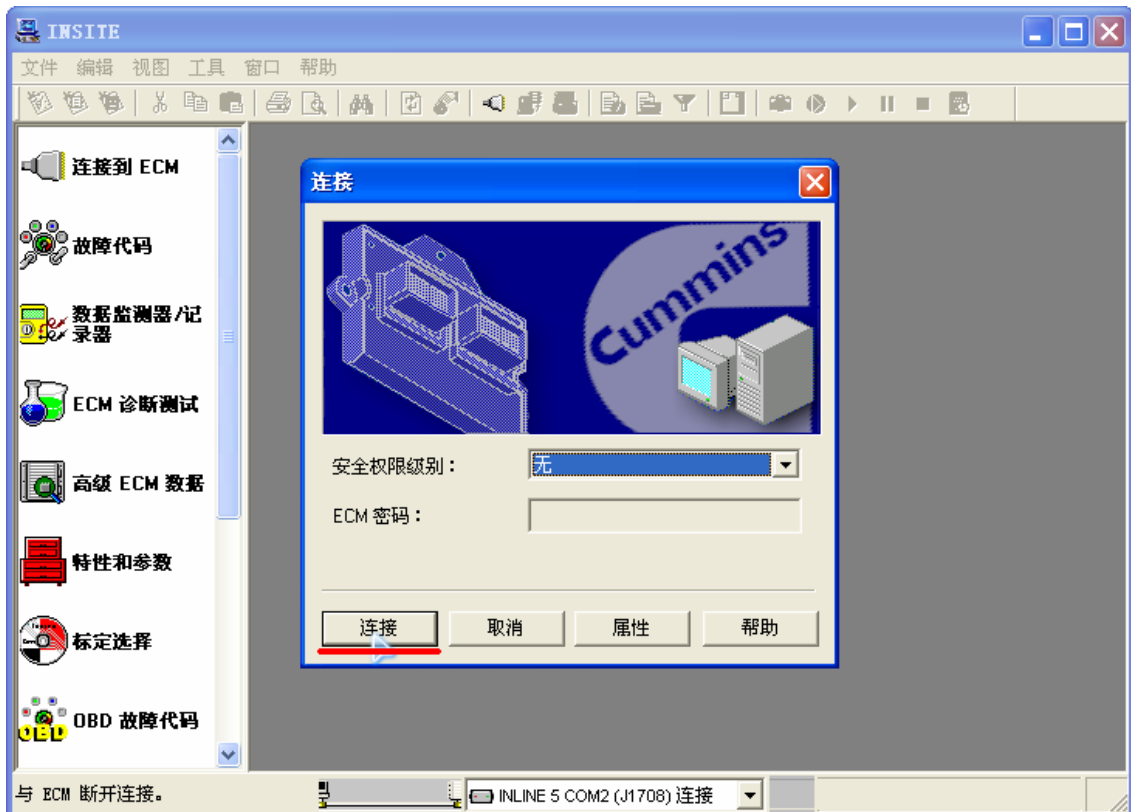
2.If J1708 indicator twinkles,click "INLINE 5 COM2(J1708) connection";  
if not, click INLINE 5 COM2(J1939)connection

Note: the COM Port Number displays on one USB Port may different from that on another USB Port  
then you have to set the COM Port by following Chapter 4





### 3.Click "Connect"



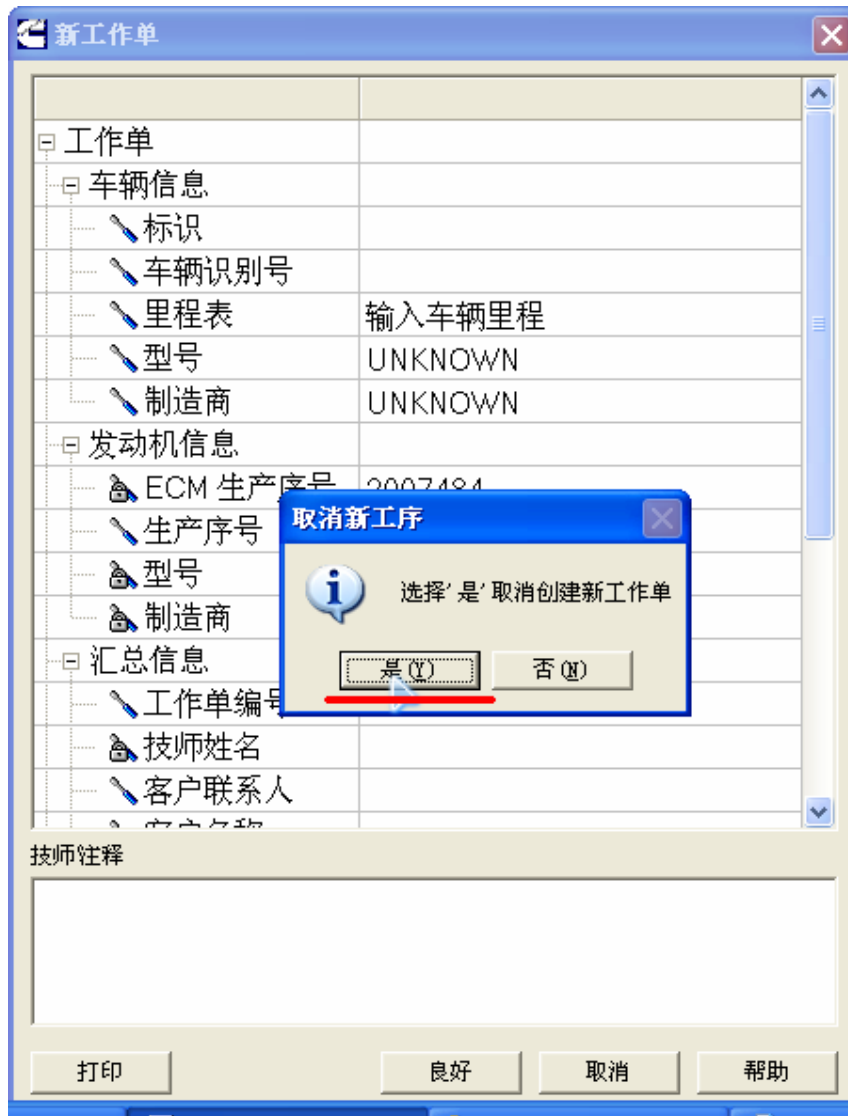
4.Attention: now Serial Port Indicator twinkles,after cummins inline 5 connect to engine the following dialog box will pop-up, then click "Candle"

Category	Item	Value
工作单	标识	
	车辆识别号	
	里程表	输入车辆里程
	型号	UNKNOWN
发动机信息	制造商	UNKNOWN
	ECM 生产序号	2007484
	生产序号	0
	型号	G6B5.9
汇总信息	制造商	
	工作单编号	WO-20080110-231509
	技师姓名	
	客户联系人	

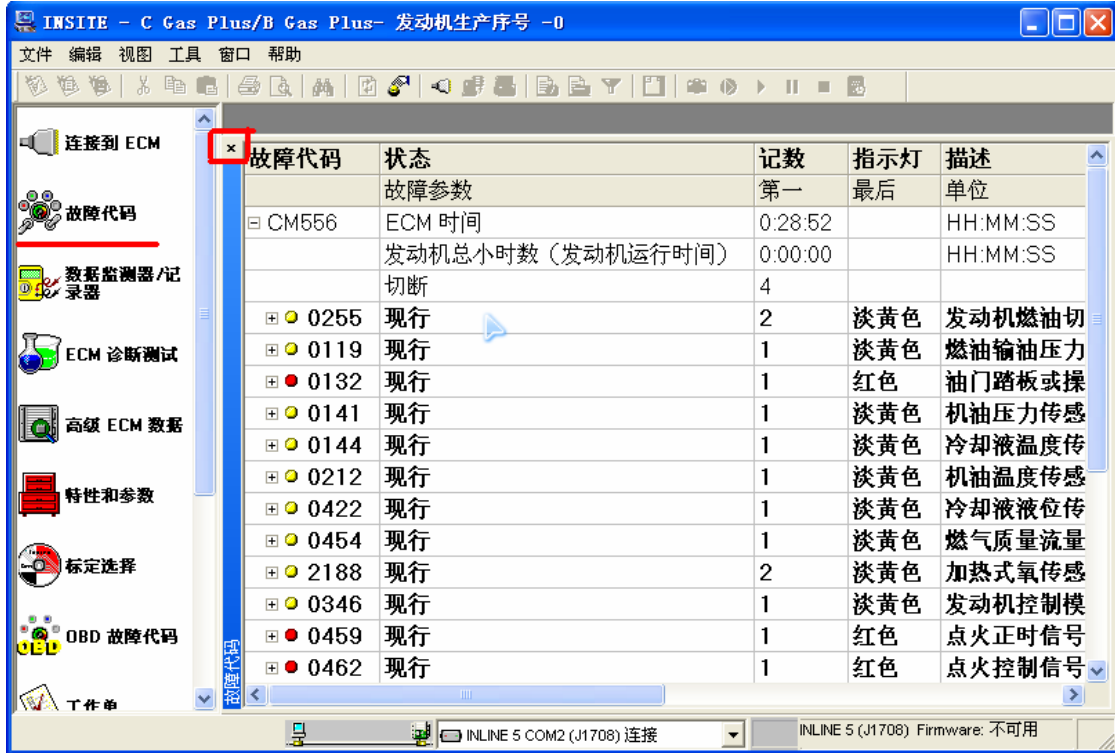
技师注释

打印      良好      取消      帮助

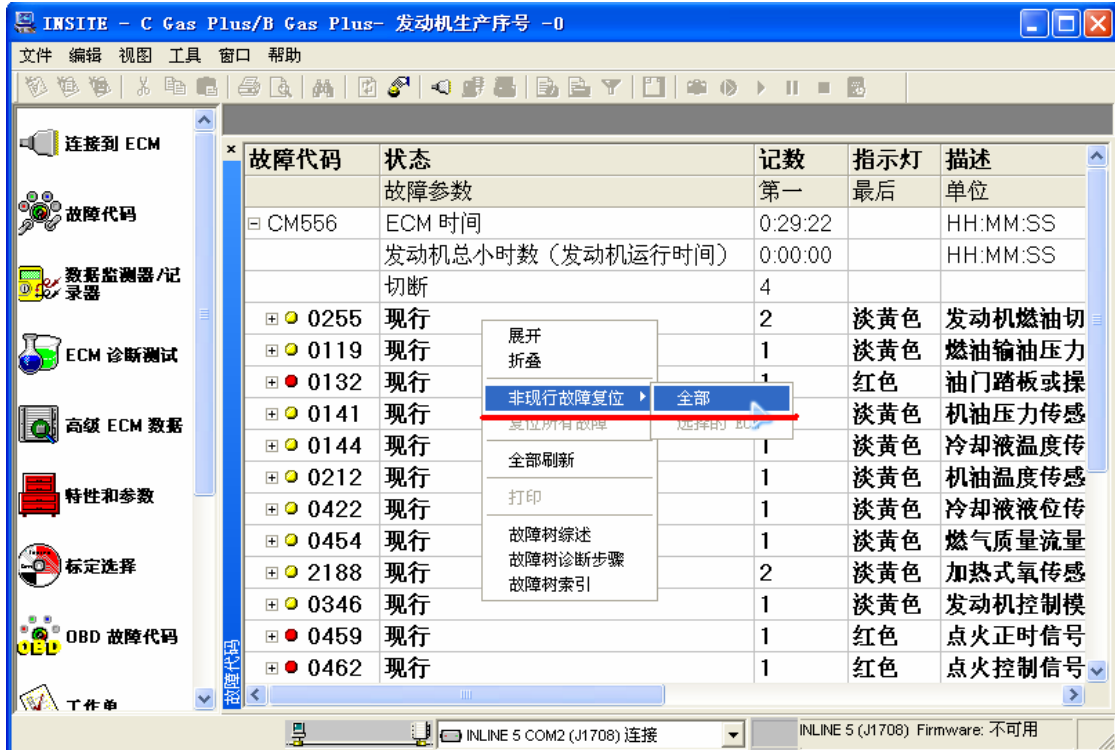
5.Click "YES"



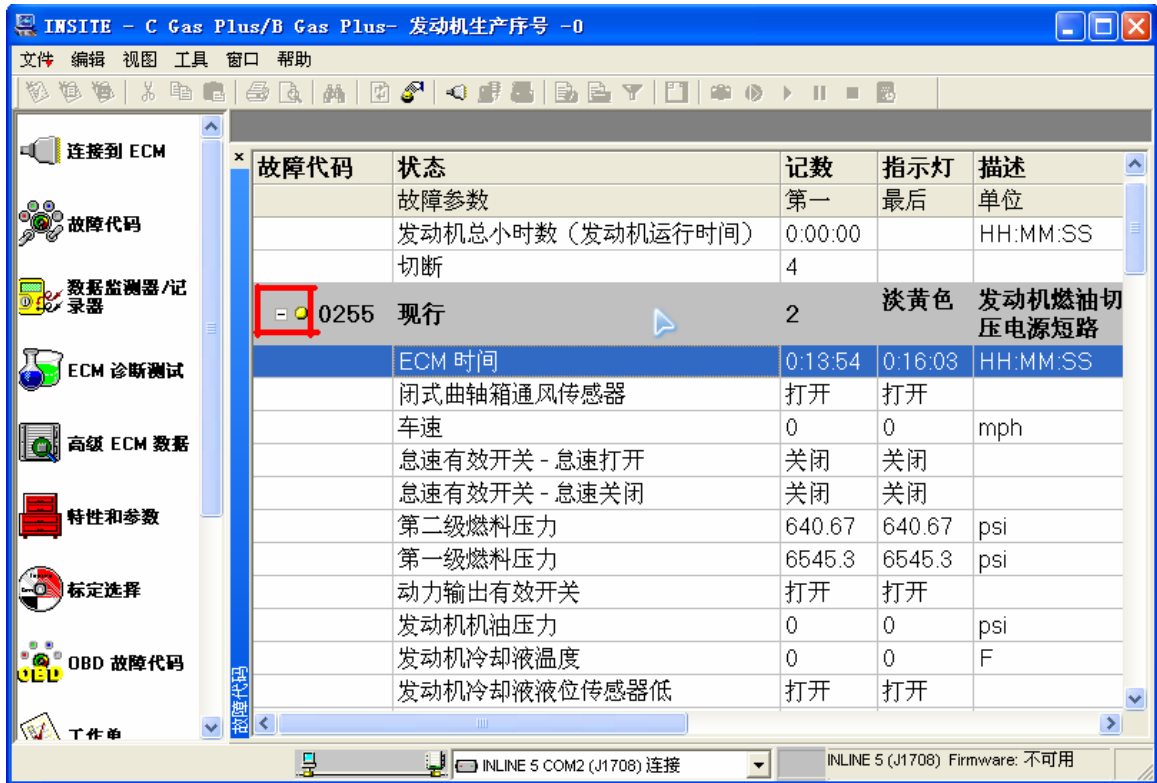
6. Click "DTCs" to read out ECU data trouble codes.



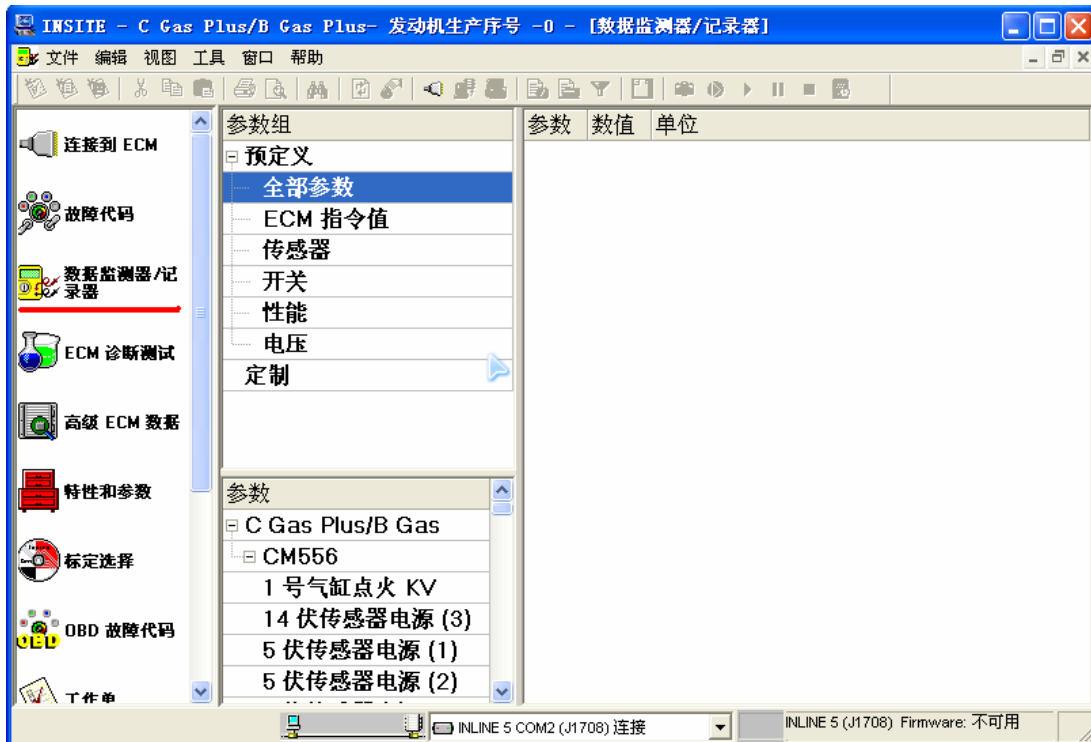
7. Right click, non-current fault code can be reset as follows shown

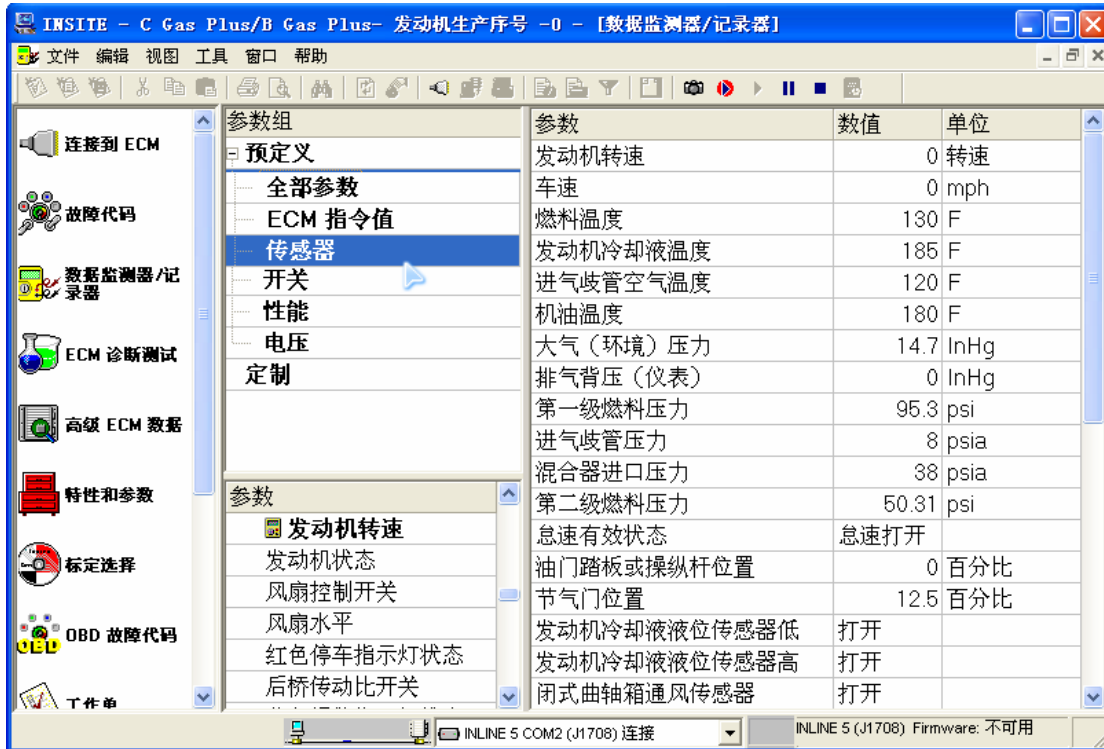


8. Click the yellow button to check sensor data when trouble occurs as following shows

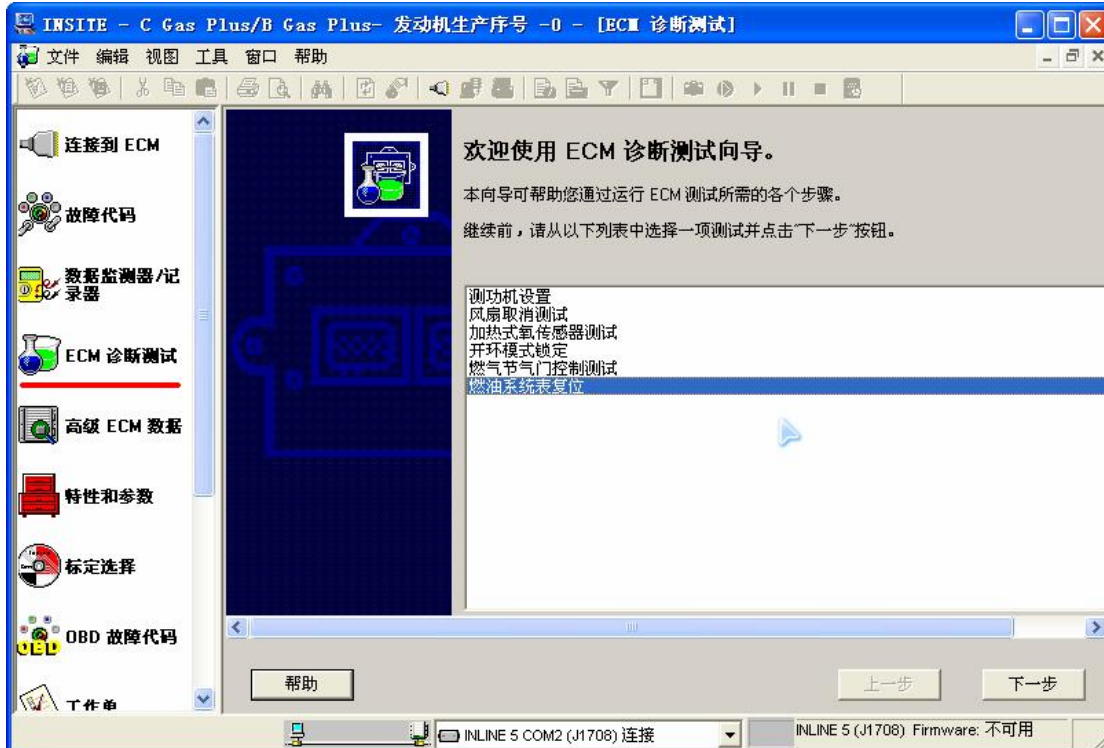


9. Click "Data Detector" at the left column to check live sensor data

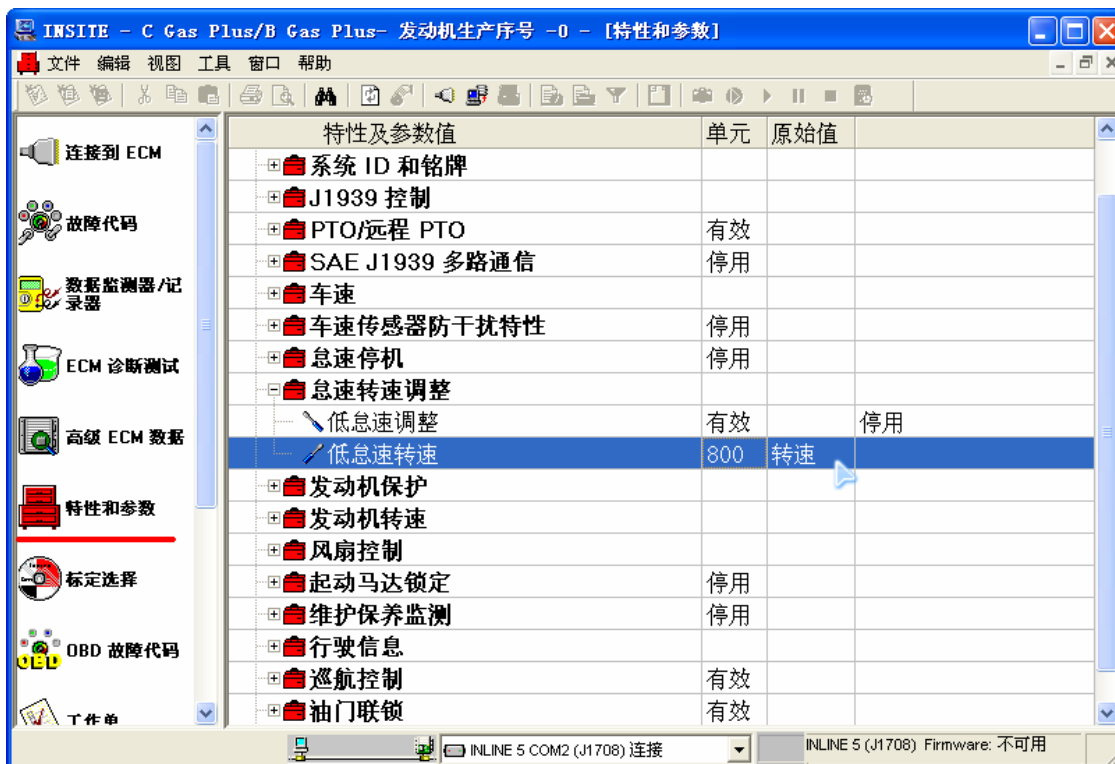




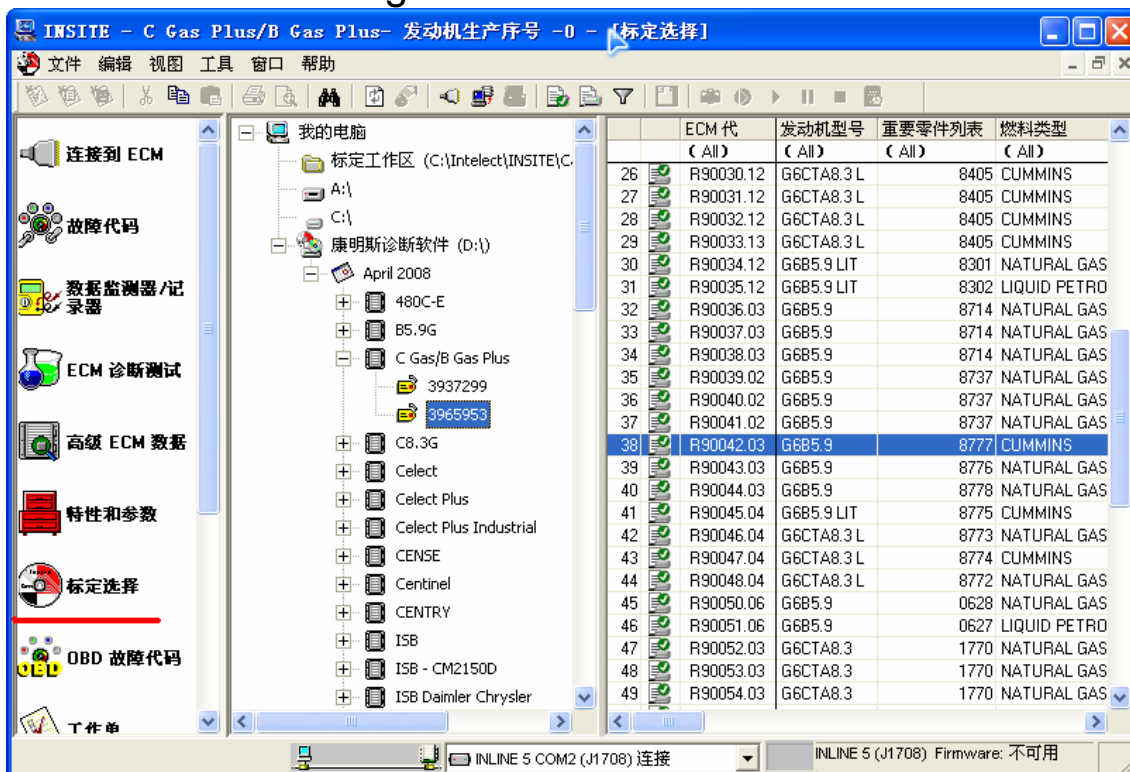
10. Click "ECM Diagnosis and Test" at the left column to test some actuator



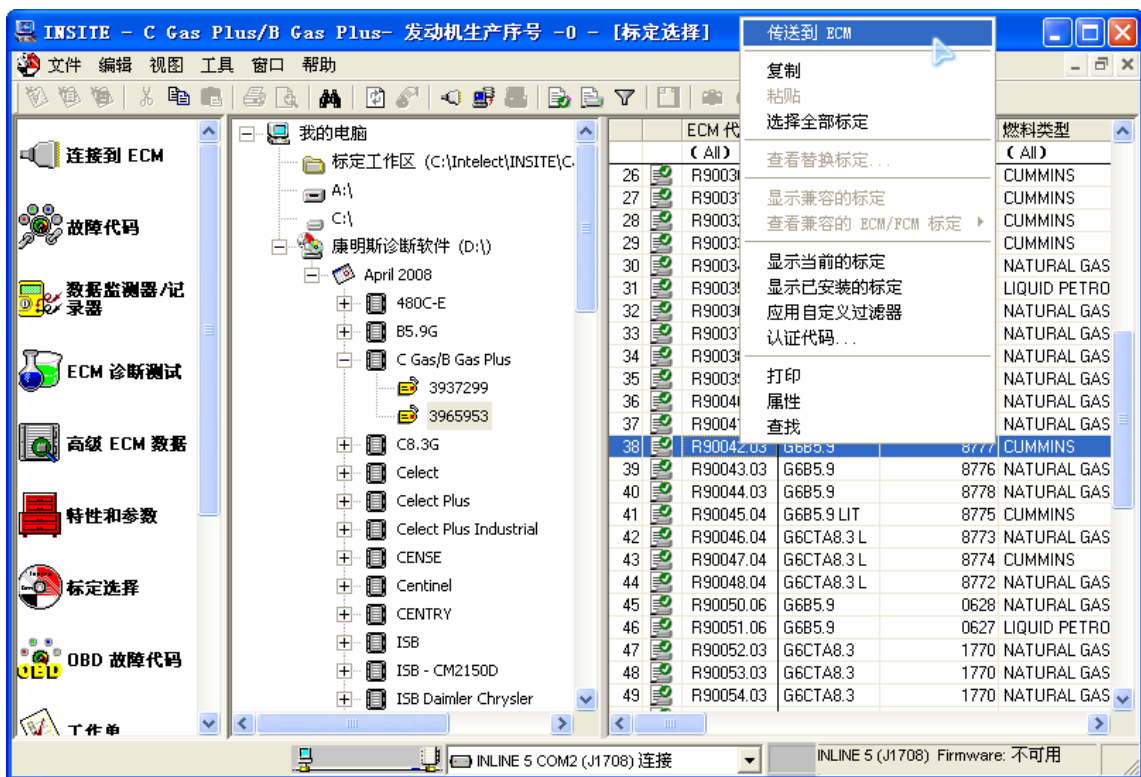
11. click "Features and Parameter" at the left column to modify engine parameters



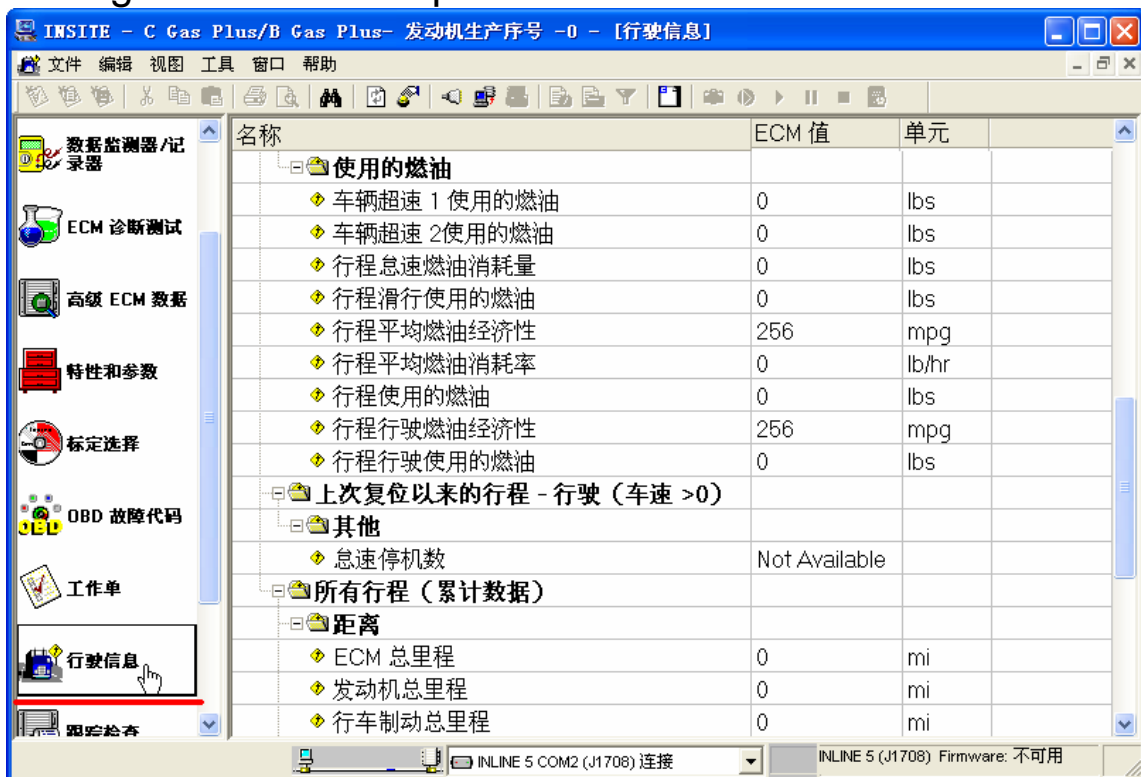
12. Click "Calibration Selection" at the left column to re-calibrate engine controller







13.click "drive information" at the left column to check engine fuel consumption status



14.After diagnosis finish, disconnect the connection with engine controller as following shows



