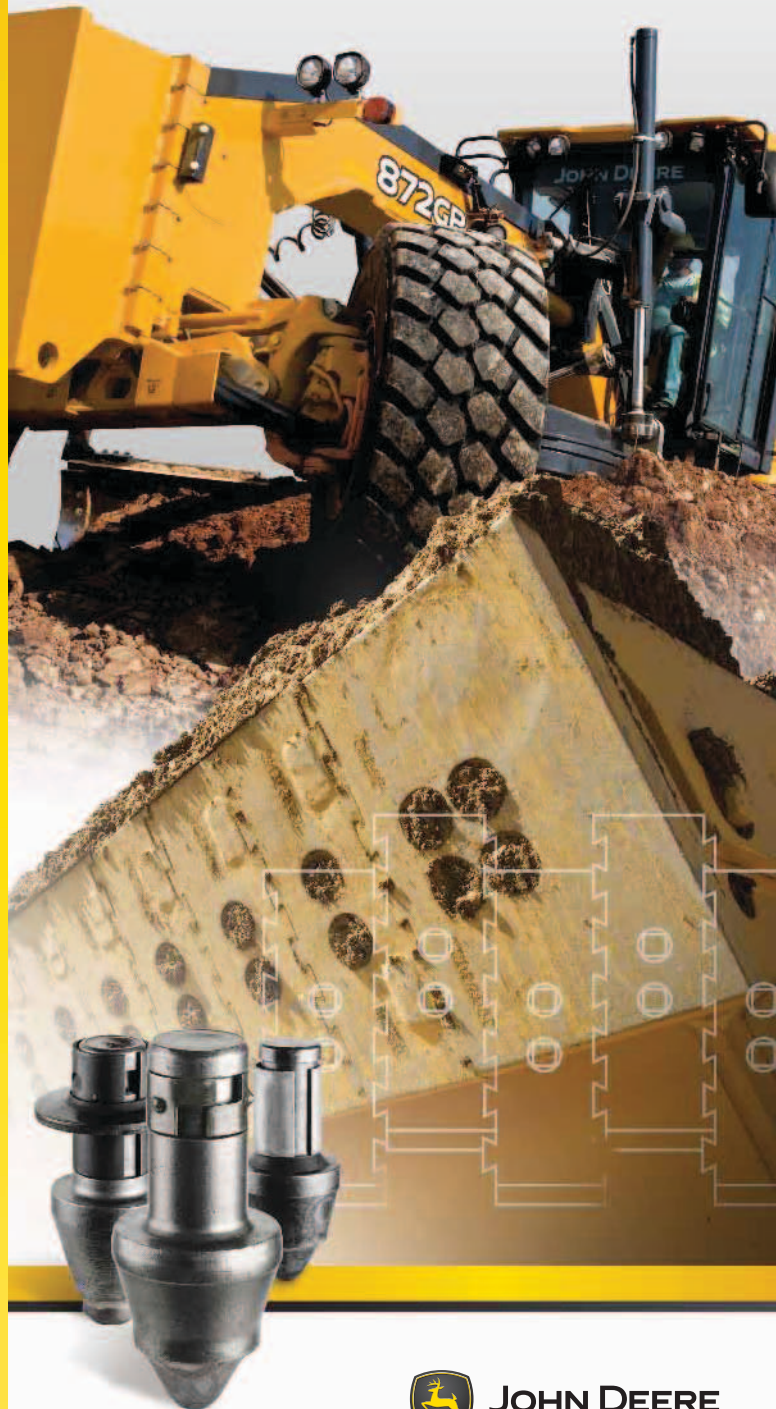


Cutting Edges



This literature has been compiled for worldwide circulation. While general information, pictures, and descriptions are provided, some illustrations and text may include finance, credit, insurance, product options, and accessories NOT AVAILABLE in all regions. PLEASE CONTACT YOUR LOCAL DEALER FOR DETAILS. John Deere reserves the right to change specification and design of all products described in this literature without notice.



(12-04)

www.JohnDeere.com



JOHN DEERE

www.JohnDeere.com

John Deere cutting edge warranty

Dura-Max™ and Jagz™

John Deere warrants all Dura-Max and Jagz cutting edges against breakage. If a Dura-Max or Jagz cutting edge should break during use before it wears out, a new edge will be furnished free of charge to the customer.

Note: Attaching hardware or labor for removal and installation are not included.

Warranty

The John Deere parts warranty applies to all cutting edges which may otherwise prove defective in materials or workmanship within 90 days after purchase. This warranty shall not apply to products which have been subjected to misuse, abuse, neglect, or improper storage, handling, or maintenance.



Carbon edges

The standard for cutting edges, these edges are formed from a high carbon rolled steel, made harder by the addition of carbon.

Dura-Max edges

Manufactured with thru-hardened 15B30 boron steel, which is significantly harder than the standard carbon edge. Dura-Max edges are made harder via a heat-treatment process in which the blades are heated to extreme temperatures and then quenched to reach maximum hardness levels.

Rockwell C Hardness

Carbon Edges	25.4–34.7
Dura-Max Edges	38–50



Jagz cutting edges

Jagz interlocking cutting edge systems provide an alternative to conventional, non-interchangeable cutting edges.

Jagz utilize bolt-on edges common to many buckets, and can be mounted in a staggered or straight pattern depending on your application. When mounted in a staggered pattern, you get increased penetration and better bucket fill. The straight pattern leaves a smoother working surface, making it perfect for loading. Jagz also balance wear by swapping the more quickly worn outside edge with the less worn centers.

In addition, Jagz maximize usable steel by allowing for up to 90-percent wear before replacement, compared to 50-percent usable steel on conventional bolt-on edges. This flexibility is what makes the Jagz system stand out from the crowd.



Jagz Part Number Description

Thickness in mm

- 25 mm = 1 in.
- 35 mm = 1.38 in.
- 40 mm = 1.57 in.

- 0 = Standard 6-in. wide
- 1 = Joiner 7-in. wide
- 3 = RH end seg. w/ 4-in. offset
- 4 = LH end seg. w/ 4-in. offset
- 5 = RH end seg. w/ 5-in. offset
- 6 = LH end seg. w/ 5-in. offset
- 7 = RH end seg. w/ 7-in. offset
- 8 = LH end seg. w/ 7-in. offset

T 8 3 5 1 0 0 C

Bolt Diameter 3-in. Drop

- 1 = 1-in. Bolt
- 2 = 3/4-in. Bolt
- 3 = 5/8-in. Bolt

- 0 = Universal 17⁷/₈-in.
- 1 = Short universal 14⁷/₈-in.
- 2 = Long universal 20⁷/₈-in.
- 3 = Short universal 11⁷/₈-in.

Easy-to-install Jagz are guaranteed against breakage and fit any model or make of loader.



Jagz

Jagz			
Part No.	Description	Size	Bolt Diameter
T825100C	Standard	25.4 mm x 152.4 mm x 454.03 mm (1 in. x 6 in. x 17 ⁷ / ₈ in.)	25.4 mm (1 in.)
T825101C	7-in. Joiner	25.4 mm x 177.8 mm x 454.03 mm (1 in. x 7 in. x 17 ⁷ / ₈ in.)	25.4 mm (1 in.)
T825105C	RH End Segment	25.4 mm x 203.2 mm x 454.03 mm (1 in. x 8 in. x 17 ⁷ / ₈ in.)	25.4 mm (1 in.)
T825106C	LH End Segment	25.4 mm x 203.2 mm x 454.03 mm (1 in. x 8 in. x 17 ⁷ / ₈ in.)	25.4 mm (1 in.)
T825110C	Short Standard	25.4 mm x 152.4 mm x 377.83 mm (1 in. x 6 in. x 14 ⁷ / ₈ in.)	25.4 mm (1 in.)
T825111C	7-in. Joiner, Short	25.4 mm x 177.8 mm x 377.83 mm (1 in. x 7 in. x 14 ⁷ / ₈ in.)	25.4 mm (1 in.)
T825115C	RH End Segment	25.4 mm x 203.2 mm x 377.83 mm (1 in. x 8 in. x 14 ⁷ / ₈ in.)	25.4 mm (1 in.)
T825116C	LH End Segment	25.4 mm x 203.2 mm x 377.83 mm (1 in. x 8 in. x 14 ⁷ / ₈ in.)	25.4 mm (1 in.)
T825230C	Short Standard	25.4 mm x 152.4 mm x 301.63 mm (1 in. x 6 in. x 11 ⁷ / ₈ in.)	19.05 mm (3/4 in.)
T825233C	Short RH End Segment	25.4 mm x 177.8 mm x 301.63 mm (1 in. x 7 in. x 11 ⁷ / ₈ in.)	19.05 mm (3/4 in.)
T825234C	Short LH End Segment	25.4 mm x 177.8 mm x 301.63 mm (1 in. x 7 in. x 11 ⁷ / ₈ in.)	19.05 mm (3/4 in.)

Jagz (continued)			
Part No.	Description	Size	Bolt Diameter
T825330C	Short Standard	25.4 mm x 152.4 mm x 301.63 mm (1 in. x 6 in. x 11 ⁷ / ₈ in.)	15.88 mm (5/8 in.)
T825333C	Short RH End Segment	25.4 mm x 177.8 mm x 301.63 mm (1 in. x 7 in. x 11 ⁷ / ₈ in.)	15.88 mm (5/8 in.)
T825334C	Short LH End Segment	25.4 mm x 177.8 mm x 301.63 mm (1 in. x 7 in. x 11 ⁷ / ₈ in.)	15.88 mm (5/8 in.)
T835100C	Standard	34.93 mm x 152.4 mm x 454.03 mm (1 ³ / ₈ in. x 6 in. x 17 ⁷ / ₈ in.)	25.4 mm (1 in.)
T835101C	7-in. Joiner	34.93 mm x 177.8 mm x 454.03 mm (1 ³ / ₈ in. x 7 in. x 17 ⁷ / ₈ in.)	25.4 mm (1 in.)
T835105C	RH End Segment	34.93 mm x 203.2 mm x 454.03 mm (1 ³ / ₈ in. x 8 in. x 17 ⁷ / ₈ in.)	25.4 mm (1 in.)
T835106C	LH End Segment	34.93 mm x 203.2 mm x 454.03 mm (1 ³ / ₈ in. x 8 in. x 17 ⁷ / ₈ in.)	25.4 mm (1 in.)
T835107C	RH End Segment	34.93 mm x 254 mm x 454.03 mm (1 ³ / ₈ in. x 10 in. x 17 ⁷ / ₈ in.)	25.4 mm (1 in.)
T835108C	LH End Segment	34.93 mm x 254 mm x 454.03 mm (1 ³ / ₈ in. x 10 in. x 17 ⁷ / ₈ in.)	25.4 mm (1 in.)
T840100C	Standard	39.69 mm x 152.4 mm x 454.03 mm (1 ⁹ / ₁₆ in. x 6 in. x 17 ⁷ / ₈ in.)	25.4 mm (1 in.)
T840101C	7-in. Joiner	39.69 mm x 177.8 mm x 454.03 mm (1 ⁹ / ₁₆ in. x 7 in. x 17 ⁷ / ₈ in.)	25.4 mm (1 in.)

Reference Four-Wheel-Drive Loader section on pages 33–43 for model-specific information.

Jagz

Jagz (continued)

Part No.	Description	Size	Bolt Diameter
T840105C	RH End Segment	39.69 mm x 203.2 mm x 454.03 mm (1 ⁹ / ₁₆ in. x 8 in. x 17 ⁷ / ₈ in.)	25.4 mm (1 in.)
T840106C	LH End Segment	39.69 mm x 203.2 mm x 454.03 mm (1 ⁹ / ₁₆ in. x 8 in. x 17 ⁷ / ₈ in.)	25.4 mm (1 in.)
T840107C	RH End Segment	39.69 mm x 254 mm x 454.03 mm (1 ⁹ / ₁₆ in. x 10 in. x 17 ⁷ / ₈ in.)	25.4 mm (1 in.)
T840108C	LH End Segment	39.69 mm x 254 mm x 454.03 mm (1 ⁹ / ₁₆ in. x 10 in. x 17 ⁷ / ₈ in.)	25.4 mm (1 in.)
T840120C	Long Standard	39.69 mm x 152.4 mm x 530.23 mm (1 ⁹ / ₁₆ in. x 6 in. x 20 ⁷ / ₈ in.)	25.4 mm (1 in.)
T840121C	7-in. Joiner, Long	39.69 mm x 177.8 mm x 530.23 mm (1 ⁹ / ₁₆ in. x 7 in. x 20 ⁷ / ₈ in.)	25.4 mm (1 in.)
T840125C	RH End Segment	39.69 mm x 203.2 mm x 530.23 mm (1 ⁹ / ₁₆ in. x 8 in. x 20 ⁷ / ₈ in.)	25.4 mm (1 in.)
T840126C	LH End Segment	39.69 mm x 203.2 mm x 530.23 mm (1 ⁹ / ₁₆ in. x 8 in. x 20 ⁷ / ₈ in.)	25.4 mm (1 in.)
T840127C	RH End Segment	39.69 mm x 254 mm x 530.23 mm (1 ⁹ / ₁₆ in. x 10 in. x 20 ⁷ / ₈ in.)	25.4 mm (1 in.)
T840128C	LH End Segment	39.69 mm x 254 mm x 530.23 mm (1 ⁹ / ₁₆ in. x 10 in. x 20 ⁷ / ₈ in.)	25.4 mm (1 in.)

Special Applications

Part No.	Description	Size	Bolt Diameter
T835000C	Standard – 744J	34.93 mm x 152.4 mm x 454.03 mm (1 ³ / ₈ in. x 6 in. x 17 ⁷ / ₈ in.)	31.75 mm (1 ¹ / ₄ in.)
T835007C	RH End Segment – 744J	34.93 mm x 254 mm x 454.03 mm (1 ³ / ₈ in. x 10 in. x 17 ⁷ / ₈ in.)	31.75 mm (1 ¹ / ₄ in.)
T835008C	LH End Segment – 744J	34.93 mm x 254 mm x 454.03 mm (1 ³ / ₈ in. x 10 in. x 17 ⁷ / ₈ in.)	31.75 mm (1 ¹ / ₄ in.)
T209201C	6 ⁵ / ₁₆ -in. Joiner – 844J	39.69 mm x 160.02 mm x 454.03 mm (1 ⁹ / ₁₆ in. x 6 ⁵ / ₁₆ in. x 17 ⁷ / ₈ in.)	31.75 mm (1 ¹ / ₄ in.)
T209202C	RH End Segment – 844J	39.69 mm x 294.64 mm x 454.03 mm (1 ⁹ / ₁₆ in. x 11 ³ / ₅ in. x 17 ⁷ / ₈ in.)	31.75 mm (1 ¹ / ₄ in.)
T209203C	LH End Segment – 844J	39.69 mm x 294.64 mm x 454.03 mm (1 ⁹ / ₁₆ in. x 11 ³ / ₅ in. x 17 ⁷ / ₈ in.)	31.75 mm (1 ¹ / ₄ in.)

Suggested Jagz Thicknesses

Four-Wheel-Drive Loader Model	Size
444/920 and Smaller	25.4 mm (1 in.)
544/926	25.4 mm (1 in.)
624/936	25.4 mm (1 in.) or 34.93 mm (1 ³ / ₈ in.)
644/950	25.4 mm (1 in.) or 34.93 mm (1 ³ / ₈ in.)
744/966	34.93 mm (1 ³ / ₈ in.) or 38.1 mm (1 ¹ / ₂ in.)
980/988	38.1 mm (1 ¹ / ₂ in.)

Reference Four-Wheel-Drive Loader section on pages 33–43 for model-specific information.



Stinger™ grader edges

John Deere Stinger grader edges deliver consistent, reliable performance in a wide range of applications. Stingers eliminate washboarding and potholes, with fewer passes than standard grader blades, as well as decreasing the number of passes necessary to properly maintain a road surface. These tungsten-carbide-tipped cutting tools are stronger than steel, and penetrate hard-packed, gravel, and frozen surfaces easily. Stinger replaceable, rotating, self-sharpening tools wear uniformly and maintain an even cutting height by enabling them to be rotated from position to position.

Stingers come in over a dozen tool styles, and fit universally into three blade strengths for a variety of applications:

- Standard duty – ideal for light-use grading in average conditions
- Heavy duty – useful in most grading environments
- Severe duty – best for working in extreme elements

Wear-resistant steel cover blades are available for operating your scarifier system in extremely abrasive conditions or carrying heavy debris loads on the mold-board. These cover blades provide better protection for the blocks and welds, and easily attach through existing boltholes on the blade. End protectors are also available for working in rough conditions. The tough steel, heavy-duty designed end protection bits feature an exclusive combination of ductility and air-hardening steel.



Motor graders — Stingers

Tool Holders

Moldboard, 3.66-m (12 ft.), with 16-mm (5/8 in.) Bolts

Part No.	Qty.	Remarks
PBS48625	3	72 Tools Required

Moldboard, 3.66-m (12 ft.), with 19-mm (3/4 in.) Bolts

Part No.	Qty.	Remarks
PBS48750	3	72 Tools Required

Moldboard, 3.96-m (13 ft.), with 16-mm (5/8 in.) Bolts

Part No.	Qty.	Remarks
PBS36625	3	78 Tools Required
PBS48625	1	Standard Duty
PBS36625HD	3	Heavy Duty
PBS36625SD	3	Severe Duty

Moldboard, 3.96-m (13 ft.), with 19-mm (3/4 in.) Bolts

Part No.	Qty.	Remarks
PBS36750	3	78 Tools Required
PBS48750	1	Standard Duty
PBS36750HD	3	Heavy Duty
PBS36750SD	3	Severe Duty

Moldboard, 4.27-m (14 ft.), with 16-mm (5/8 in.) Bolts

Part No.	Qty.	Remarks
PBS36625	2	84 Tools Required
PBS48625	2	Standard Duty
PBS36625HD	2	Heavy Duty
PBS36625SD	2	Severe Duty

Moldboard, 4.27-m (14 ft.), with 19-mm (3/4 in.) Bolts

Part No.	Qty.	Remarks
PBS36750	2	84 Tools Required
PBS48750	2	Standard Duty
PBS36750HD	2	Heavy Duty
PBS36750SD	2	Severe Duty

Moldboard, 4.88-m (16 ft.), with 16-mm (5/8 in.) Bolts

Part No.	Qty.	Remarks
PBS48625	4	96 Tools Required
PBS48625HD	4	Heavy Duty
PBS48625SD	4	Severe Duty

Moldboard, 4.88-m (16 ft.), with 19-mm (3/4 in.) Bolts

Part No.	Qty.	Remarks
PBS48750	4	96 Tools Required
PBS48750HD	4	Heavy Duty
PBS48750SD	4	Severe Duty

End Protectors with Carbide

Part No.	Qty.	Remarks
AT167312	1	RH 16-mm (5/8 in.) Bolts
AT168705	1	RH 19-mm (3/4 in.) Bolts
AT167313	1	LH 16-mm (5/8 in.) Bolts
AT168706	1	LH 19-mm (3/4 in.) Bolts

Tools

For Stingers

Part No.	Qty.	Remarks
AT164846	50	Max-Duty Bit with Barbed Short Retainer
AT164848	50	Max-Duty Bit with Long Retainer
AT164849	50	Pointed Tip with Barbed Short Retainer
AT164845	50	Pointed Tip with Long Retainer
AT164847	50	Non-Rotating, Flat Bit
AT164850	50	Rounded Tip
TY16184	50	Non-Rotating, Flat Bit
TY16185	50	Sandvik Replacement Bit (Tip Similar to AT164850)
TY16186	50	Sandvik Replacement Bit (Tip Same as AT164845)
AT166866	50	Sharp Pointed with Long Retainer
TY16370	50	Sandvik #2244-27FS Replacement Bit
T148896	1	Block with Groove
T150452	1	Replacement Barbed Retainer

Cover Blades

For Standard-Duty Blades

Part No.	Thickness	Width	Length	Bolt Diameter
TY25301	19 mm (0.75 in.)	127 mm (5 in.)	915 mm (36 in.)	16 mm (0.63 in.)
TY25302	19 mm (0.75 in.)	127 mm (5 in.)	1220 mm (48 in.)	16 mm (0.63 in.)
TY25303	19 mm (0.75 in.)	127 mm (5 in.)	915 mm (36 in.)	19 mm (0.75 in.)
TY25304	19 mm (0.75 in.)	127 mm (5 in.)	1220 mm (48 in.)	19 mm (0.75 in.)

For Severe-Duty Blades

Part No.	Thickness	Width	Length	Bolt Diameter
TY25305	19 mm (0.75 in.)	152 mm 6 in.	915 mm (36 in.)	16 mm (0.63 in.)
TY25306	19 mm (0.75 in.)	152 mm 6 in.	1220 mm (48 in.)	16 mm (0.63 in.)
TY25307	19 mm (0.75 in.)	152 mm 6 in.	915 mm (36 in.)	19 mm (0.75 in.)
TY25308	19 mm (0.75 in.)	152 mm 6 in.	1220 mm (48 in.)	19 mm (0.75 in.)

Motor graders — Stingers

End Protectors

For Standard- and Heavy-Duty Blade Systems

Part No.	Bolt Design	End Protector	Bolt Diameter	Approximate Unit Weight
AT167312	2	RH	16 mm (0.63 in.)	4.5 kg (10 lb.)
AT167313	2	LH	16 mm (0.63 in.)	4.5 kg (10 lb.)
AT168705	2	RH	19 mm (0.75 in.)	4.5 kg (10 lb.)
AT168706	2	LH	19 mm (0.75 in.)	4.5 kg (10 lb.)

For Severe-Duty Blade Systems

Part No.	Bolt Design	End Protector	Bolt Diameter	Approximate Unit Weight
TY25288	2	RH	19 mm (0.75 in.)	9.5 kg (21 lb.)
TY25289	2	LH	19 mm (0.75 in.)	9.5 kg (21 lb.)
PM1821674	3	RH	19 mm (0.75 in.)	9.5 kg (21 lb.)
PM1821679	3	LH	19 mm (0.75 in.)	9.5 kg (21 lb.)

Motor graders

570

End Bits and Overlays

Part No.	Part Name	Qty.	Remarks
U42495	Cutting Edge	2	LH/RH End Bit
T34084	Cutting Edge	1	RH Overlay for 152-mm (6 in.) Blades
T34085	Cutting Edge	1	LH Overlay for 152-mm (6 in.) Blades
T152767	Cutting Edge	2	LH/RH End Bit

670CHII / 670CH / 670CII / 670C / 670B / 670A 672CHII / 672CH / 672CII / 672C / 672B / 672A

End Bits and Overlays

Part No.	Part Name	Qty.	Remarks
T71955	Cutting Edge	2	LH/RH End Bit
T71956	Cutting Edge	2	Heavy-Duty LH/RH End Bit
T70926	Cutting Edge	1	LH/RH Overlay for 152-mm (6 in.) Blades
T70927	Cutting Edge	1	LH/RH Overlay for 203-mm (8 in.) Blades
T149152	Cutting Edge	2	LH/RH End Bit
T149153	Cutting Edge	2	Heavy-Duty LH/RH End Bit
T162466	Cutting Edge	1	LH Overlay for 152-mm (6 in.) Blades
T162467	Cutting Edge	1	RH Overlay for 152-mm (6 in.) Blades
T162468	Cutting Edge	1	LH Overlay for 203-mm (8 in.) Blades
T162469	Cutting Edge	1	RH Overlay for 203-mm (8 in.) Blades

670D / 672D

End Bits and Overlays

Part No.	Part Name	Qty.	Remarks
T202877	Cutting Edge	2	Heavy-Duty LH/RH End Bit

Motor graders

770CHII / 770CII / 770CH / 770C / 770BH / 770B / 770A
772CHII / 772CII / 772CH / 772C / 772BH / 772B / 772A

End Bits and Overlays

Part No.	Part Name	Qty.	Remarks
T71955	Cutting Edge	2	LH/RH End Bit
T71956	Cutting Edge	2	Heavy-Duty LH/RH End Bit
T70926	Cutting Edge	1	LH/RH Overlay for 152-mm (6 in.) Blades
T70927	Cutting Edge	1	LH/RH Overlay for 203-mm (8 in.) Blades
T149152	Cutting Edge	2	LH/RH End Bit
T149153	Cutting Edge	2	Heavy-Duty LH/RH End Bit
T162466	Cutting Edge	1	LH Overlay for 152-mm (6 in.) Blades
T162467	Cutting Edge	1	RH Overlay for 152-mm (6 in.) Blades
T162468	Cutting Edge	1	LH Overlay for 203-mm (8 in.) Blades
T162469	Cutting Edge	1	RH Overlay for 203-mm (8 in.) Blades

770D / 772D

End Bits and Overlays

Part No.	Part Name	Qty.	Remarks
T202876	Cutting Edge	2	LH/RH End Bit
T202877	Cutting Edge	2	Heavy-Duty LH/RH End Bit
T202938	Cutting Edge	2	LH/RH Overlay for 152-mm (6 in.) Blades
T202940	Cutting Edge	2	LH/RH Overlay for 203-mm (8 in.) Blades

870D / 872D

End Bits and Overlays

Part No.	Part Name	Qty.	Remarks
T202876	Cutting Edge	2	LH/RH End Bit
T202877	Cutting Edge	2	Heavy-Duty LH/RH End Bit
T202938	Cutting Edge	2	LH/RH Overlay for 152-mm (6 in.) Blades
T202940	Cutting Edge	2	LH/RH Overlay for 203-mm (8 in.) Blades

670G/GP / 672G/GP / 770G/GP / 772G/GP / 870G/GP /
872G/GP / 670D / 672D / 770D / 772D / 870D / 872D

12-ft. Moldboard, 3.66-m x 686-mm x 25-mm (12 ft. x 27 in. x 1 in.) with 16-mm x 203-mm (5/8 in. x 8 in.) Cutting Edges

Part No.	Part Name	Qty.	Remarks
T202876	Dura-Max Cutting Edge	2	Outer
T66703	Dura-Max Cutting Edge	2	Inner

13-ft. Moldboard, 3.96-m x 686-mm x 25-mm (13 ft. x 27 in. x 1 in.) with 16-mm x 203-mm (5/8 in. x 8 in.) Cutting Edges

Part No.	Part Name	Qty.	Remarks
T202876	Dura-Max Cutting Edge	2	Outer
T66703	Dura-Max Cutting Edge	1	Inner
T66704	Dura-Max Cutting Edge	1	Inner

14-ft. Moldboard, 4.27-m x 686-mm x 25-mm (14 ft. x 27 in. x 1 in.) with 16-mm x 203-mm (5/8 in. x 8 in.) Cutting Edges

Part No.	Part Name	Qty.	Remarks
T202876	Dura-Max Cutting Edge	2	Outer
T66704	Dura-Max Cutting Edge	2	Inner

14-ft. Moldboard, 4.27-m x 686-mm x 25-mm (14 ft. x 27 in. x 1 in.) with 19-mm x 203-mm (3/4 in. x 8 in.) Cutting Edges and 19-mm (3/4 in.) Hardware

Part No.	Part Name	Qty.	Remarks
T218922	Dura-Max Cutting Edge	2	Outer
T74772	Dura-Max Cutting Edge	2	Inner

Moldboard Overlays with 203-mm (8 in.) Cutting Edge and 16-mm (5/8 in.) Hardware

Part No.	Part Name	Qty.	Remarks
T202940	Dura-Max Cutting Edge	2	

Moldboard Overlays with 203-mm (8 in.) Cutting Edge and 19-mm (3/4 in.) Hardware

Part No.	Part Name	Qty.	Remarks
T218923	Overlay End Bit	2	

Moldboard Extension, Right, 686-mm (27 in.) with 16-mm (5/8 in.) Hardware

Part No.	Part Name	Qty.	Remarks
T202876	Dura-Max Cutting Edge	1	
T66706	Dura-Max Cutting Edge	2	

Moldboard Extension, Left, 686-mm (27 in.) with 16-mm (5/8 in.) Hardware

Part No.	Part Name	Qty.	Remarks
T202876	Dura-Max Cutting Edge	1	
T66706	Dura-Max Cutting Edge	2	

Moldboard Extension, Right, 686-mm (27 in.) with 19-mm (3/4 in.) Hardware

Part No.	Part Name	Qty.	Remarks
T218922	Dura-Max Cutting Edge	1	
T74773	Dura-Max Cutting Edge	2	

Motor graders

670G/GP / 672G/GP / 770G/GP / 772G/GP / 870G/GP / 872G/GP / 670D / 672D / 770D / 772D / 870D / 872D
(continued)

Moldboard Extension, Left, 686-mm (27 in.) with 19-mm (3/4 in.)

Hardware

Part No.	Part Name	Qty.	Remarks
T218922	Dura-Max Cutting Edge	1	
T74773	Dura-Max Cutting Edge	2	

670G/GP / 672G/GP / 770G/GP / 772G/GP / 670D / 672D / 770D / 772D

12-ft. Moldboard, 3.66-m x 610-mm x 22-mm (12 ft. x 24 in. x 7/8 in.) with 16-mm x 152-mm (5/8 in. x 6 in.) Cutting Edges

Part No.	Part Name	Qty.	Remarks
T202876	Dura-Max Cutting Edge	2	Outer
T66702	Dura-Max Cutting Edge	2	Inner

12-ft. Moldboard, 3.66-m x 610-mm x 22-mm (12 ft. x 24 in. x 7/8 in.) with 16-mm x 203-mm (5/8 in. x 8 in.) Cutting Edges

Part No.	Part Name	Qty.	Remarks
T202876	Dura-Max Cutting Edge	2	Outer
T66703	Dura-Max Cutting Edge	2	Inner

14-ft. Moldboard, 4.27-m x 610-mm x 22-mm (14 ft. x 24 in. x 7/8 in.) with 16-mm x 152-mm (5/8 in. x 6 in.) Cutting Edges

Part No.	Part Name	Qty.	Remarks
T202876	Dura-Max Cutting Edge	2	Outer
T66707	Dura-Max Cutting Edge	2	Inner

14-ft. Moldboard, 4.27-m x 610-mm x 22-mm (14 ft. x 24 in. x 7/8 in.) with 16-mm x 203-mm (5/8 in. x 8 in.) Cutting Edges

Part No.	Part Name	Qty.	Remarks
T202876	Dura-Max Cutting Edge	2	Outer
T66704	Dura-Max Cutting Edge	2	Inner

Moldboard Overlays with 152-mm (6 in.) Cutting Edge and 16-mm (5/8 in.) Hardware

Part No.	Part Name	Qty.	Remarks
T202938	Dura-Max Cutting Edge	2	

Moldboard Extension, Right, 610-mm (24 in.) with 16-mm (5/8 in.) Hardware

Part No.	Part Name	Qty.	Remarks
T202876	Dura-Max Cutting Edge	1	
T66706	Dura-Max Cutting Edge	2	

670G/GP / 672G/GP / 770G/GP / 772G/GP / 670D / 672D / 770D / 772D (continued)

Moldboard Extension, Left, 610-mm (24 in.) with 16-mm (5/8 in.)

Hardware

Part No.	Part Name	Qty.	Remarks
T202876	Dura-Max Cutting Edge	1	
T66706	Dura-Max Cutting Edge	2	

870G/GP / 872G/GP / 870D / 872D

16-ft. Moldboard, 4.88-m x 686-mm x 25-mm (16 ft. x 27 in. x 1 in.) with 16-mm x 203-mm (5/8 in. x 8 in.) Cutting Edges and 19-mm (3/4 in.)

Hardware

Part No.	Part Name	Qty.	Remarks
T218922	Dura-Max Cutting Edge	2	Outer
T74773	Dura-Max Cutting Edge	2	Inner

Landscape loaders

210C

Blade Position

Part No.	Part Name	Qty.	Remarks
T105892	Cutting Edge	1	102-mm (4 in.) x 2210-mm (87 in.) Bent Up Base Edge Without Holes
PBT105892	Cutting Edge	1	102-mm (4 in.) x 2218-mm (87 ¹³ / ₁₆ in.) Bent Up Base Edge
T103142	Cutting Edge	1	203-mm (8 in.) x 1105-mm (43 ¹ / ₂ in.) Center
T103141	Cutting Edge	2	203-mm (8 in.) x 483-mm (19 in.) End
T150487	Cutting Edge	1	152-mm (6 in.) x 2184-mm (86 in.) Base Edge
T150517	Cutting Edge	1	203-mm (8 in.) x 2184-mm (86 in.) Carbon Center
T150517HT	Cutting Edge	1	203-mm (8 in.) x 2184-mm (86 in.) Center
T118977	Cutting Edge	1	152-mm (6 in.) x 2288-mm (90 ⁵ / ₁₆ in.) Base Edge
T84194HT	Cutting Edge	1	203-mm (8 in.) x 2346-mm (92 ³ / ₈ in.) One Piece Bolt-On
T118768	Cutting Edge	1	152-mm (6 in.) x 2346-mm (92 ³ / ₈ in.) Base Edge
T128527	Cutting Edge	1	203-mm (8 in.) x 2146-mm (84 ¹ / ₂ in.) Base Edge
T150517	Cutting Edge	1	203-mm (8 in.) x 2184-mm (86 in.) Carbon Center
T150517HT	Cutting Edge	1	203-mm (8 in.) x 2184-mm (86 in.) Center
T143803	Cutting Edge	1	203-mm (8 in.) x 2089-mm (82 ¹ / ₄ in.) Multi-Purpose Dozer Center
T143687	Cutting Edge	1	102-mm (4 in.) x 2064-mm (81 ¹ / ₄ in.) Multi-Purpose Clam Edge

210LJ / 210LE

Loader Bucket, 0.86 m³ (1.12 cu. yd.)

Part No.	Part Name	Qty.	Remarks
T150487	Cutting Edge	1	
T150517	Cutting Edge	1	Auxiliary

Loader Bucket, 0.76 m³ (1.0 cu. yd.)

Part No.	Part Name	Qty.	Remarks
T150487	Cutting Edge	1	

Multi-Purpose Bucket

Part No.	Part Name	Qty.	Remarks
T166418	Cutting Edge	1	2083-mm (82 in.) Rear
T166454	Cutting Edge	1	2184-mm (86 in.) Rear
T166419	Cutting Edge	1	2083-mm (82 in.) Front
T166455	Cutting Edge	1	2184-mm (86 in.) Front
T166437	Cutting Edge	1	2083-mm (82 in.) Front Auxiliary
T150517	Cutting Edge	1	2184-mm (86 in.) Front Auxiliary

Loader Coupler Bucket

Part No.	Part Name	Qty.	Remarks
T150487	Cutting Edge	1	0.86-m ³ (1.13 cu. yd.), 19-mm (¾ in.) SBF Welded On
T118768	Cutting Edge	1	1.00-m ³ (1.31 cu. yd.), 19-mm (¾ in.) SBF Welded On
T150517	Cutting Edge	1	0.86-m ³ (1.13 cu. yd.), 19-mm (¾ in.) x 203-mm (8 in.) DBF x 2184 mm (86 in.) Auxiliary
T150517HD	Dura-Max Cutting Edge	1	0.86-m ³ (1.13 cu. yd.), 25.4-mm (1 in.) x 203-mm (8 in.) DBF x 2184 mm (86 in.) Auxiliary
T84194	Cutting Edge	1	1.00-m ³ (1.31 cu. yd.), 19-mm (¾ in.) x 203-mm (8 in.) DBF x 2346 mm (92 ³ / ₈ in.) Auxiliary
T84194HD	Dura-Max Cutting Edge	1	1.00-m ³ (1.31 cu. yd.), 25.4-mm (1 in.) x 203-mm (8 in.) DBF x 2346 mm (92 ³ / ₈ in.) Auxiliary

Backhoe loaders

310D / 310C / 310B / 310A / 315D / 315C / 315B / 315A

Blade Position

Part No.	Part Name	Qty.	Remarks
T118977	Cutting Edge	1	152-mm (6 in.) x 2288-mm (90 ⁵ / ₆₄ in.) Base Edge
T84194HT	Cutting Edge	1	203-mm (8 in.) x 2346-mm (92 ³ / ₈ in.) One Piece Bolt-On

310E / 310D / 310C / 310SE / 315E / 315D / 315C / 315SE

Blade Position

Part No.	Part Name	Qty.	Remarks
T128538	Cutting Edge	1	203-mm (8 in.) x 2350-mm (92 ¹ / ₂ in.) Base Edge
T84194HT	Cutting Edge	1	203-mm (8 in.) x 2346-mm (92 ³ / ₈ in.) One Piece Bolt-On
T143802	Cutting Edge	1	203-mm (8 in.) x 2343-mm (92 ¹ / ₄ in.) Multi-Purpose Dozer Center
T143679	Cutting Edge	1	102-mm (4 in.) x 2267-mm (89 ¹ / ₄ in.) Multi-Purpose Clam Edge

310E / 310D / 310C / 310SE / 315G / 315E / 315D / 315C / 315SE

Blade Position

Part No.	Part Name	Qty.	Remarks
T150487	Cutting Edge	1	152-mm (6 in.) x 2184-mm (86 in.) Base Edge
T150517	Cutting Edge	1	203-mm (8 in.) x 2184-mm (86 in.) Carbon Center
T150517HT	Cutting Edge	1	203-mm (8 in.) x 2184-mm (86 in.) Center
T118768	Cutting Edge	1	152-mm (6 in.) x 2346-mm (92 ³ / ₈ in.) Base Edge
T84194HT	Cutting Edge	1	203-mm (8 in.) x 2346-mm (92 ³ / ₈ in.) One Piece Bolt-On

310E / 310SE / 315G / 315E / 315SE

Blade Position

Part No.	Part Name	Qty.	Remarks
T166419	Cutting Edge	1	203-mm (8 in.) x 2083-mm (82 in.) Base Edge
T166437	Cutting Edge	1	203-mm (8 in.) x 2083-mm (82 in.) Center
T166418	Cutting Edge	1	203-mm (8 in.) x 2032-mm (80 in.) Multi-Purpose Dozer Center

310E / 310SE / 315E / 315SE

Blade Position

Part No.	Part Name	Qty.	Remarks
T161635	Cutting Edge	1	203-mm (8 in.) x 2197-mm (86 ¹ / ₂ in.) Base Edge
T150517	Cutting Edge	1	203-mm (8 in.) x 2184-mm (86 in.) Carbon Center
T150517HT	Cutting Edge	1	203-mm (8 in.) x 2184-mm (86 in.) Center
T162400	Cutting Edge	1	203-mm (8 in.) x 2140-mm (84 ¹ / ₄ in.) Multi-Purpose Dozer Center
T161636	Cutting Edge	1	152-mm (6 in.) x 2115-mm (83 ¹ / ₄ in.) Multi-Purpose Clam Edge

310J / 310SJ / 315SJ / 310G / 310SG / 315SG

310J/310SJ Loader Bucket and Cutting Edge / 315SJ/310G/310SG/315SG Coupler Loader Bucket and Cutting Edge

Part No.	Part Name	Qty.	Remarks
T150487	Cutting Edge	1	0.86-m ³ (1.13 cu. yd.), 19-mm (¾ in.) SBF Welded On
T118768	Cutting Edge	1	1.00-m ³ (1.31 cu. yd.), 19-mm (¾ in.) SBF Welded On
T150517	Cutting Edge	1	0.86-m ³ (1.13 cu. yd.), 19-mm (¾ in.) x 203-mm (8 in.) DBF x 2184 mm (86 in.) Auxiliary
T150517HD	Dura-Max Cutting Edge	1	0.86-m ³ (1.13 cu. yd.), 25.4-mm (1 in.) x 203-mm (8 in.) DBF x 2184 mm (86 in.) Auxiliary
T84194	Cutting Edge	1	1.00-m ³ (1.31 cu. yd.), 19-mm (¾ in.) x 203-mm (8 in.) DBF x 2346 mm (92 ³ / ₈ in.) Auxiliary
T84194HD	Dura-Max Cutting Edge	1	1.00-m ³ (1.31 cu. yd.), 25.4-mm (1 in.) x 203-mm (8 in.) DBF x 2346 mm (92 ³ / ₈ in.) Auxiliary

Multi-Purpose Bucket

Part No.	Part Name	Qty.	Remarks
T143802	Cutting Edge	1	2083-mm (82 in.) Rear
T166454	Cutting Edge	1	2184-mm (86 in.) Rear
T128538	Cutting Edge	1	2337-mm (92 in.) Rear
T166419	Cutting Edge	1	2083-mm (82 in.) Front
T166455	Cutting Edge	1	2184-mm (86 in.) Front
T128538	Cutting Edge	1	2337-mm (92 in.) Front
T166437	Cutting Edge	1	2083-mm (82 in.) Front Auxiliary
T150517	Cutting Edge	1	2184-mm (86 in.) Front Auxiliary
T150517HD	Dura-Max Cutting Edge	1	2184-mm (86 in.) Front Auxiliary
T84194	Cutting Edge	1	2337-mm (92 in.) Front Auxiliary
T84194HD	Dura-Max Cutting Edge	1	2337-mm (92 in.) Front Auxiliary

Backhoe loaders

410D / 410C

Blade Position

Part No.	Part Name	Qty.	Remarks
T118977	Cutting Edge	1	152-mm (6 in.) x 2288-mm (90 ⁵ / ₆₄ in.) Base Edge
T84194	Cutting Edge	1	203-mm (8 in.) x 2346-mm (92 ³ / ₈ in.) Center
T118768	Cutting Edge	1	152-mm (6 in.) x 2346-mm (92 ³ / ₈ in.) Base Edge
T84194	Cutting Edge	1	203-mm (8 in.) x 2346-mm (92 ³ / ₈ in.) Center
T142888	Cutting Edge	1	203-mm (8 in.) x 2359-mm (92 ⁷ / ₈ in.) Base Edge
T126774	Cutting Edge	1	203-mm (8 in.) x 2463-mm (97 in.) Center
T128538	Cutting Edge	1	203-mm (8 in.) x 2350-mm (92 ¹ / ₂ in.) Base Edge
T84194	Cutting Edge	1	203-mm (8 in.) x 2346-mm (92 ³ / ₈ in.) Center
T143802	Cutting Edge	1	203-mm (8 in.) x 2292-mm (90 ¹ / ₄ in.) Multi-Purpose Dozer Center
T143679	Cutting Edge	1	102-mm (4 in.) x 2267-mm (89 ¹ / ₄ in.) Multi-Purpose Clam Edge

410E

Blade Position

Part No.	Part Name	Qty.	Remarks
T150487	Cutting Edge	1	152-mm (6 in.) x 2184-mm (86 in.) Base Edge
T150517	Cutting Edge	1	203-mm (8 in.) x 2184-mm (86 in.) Carbon Center
T150517HT	Cutting Edge	1	203-mm (8 in.) x 2184-mm (86 in.) Center
T118768	Cutting Edge	1	152-mm (6 in.) x 2346-mm (92 ³ / ₈ in.) Base Edge
T84194	Cutting Edge	1	203-mm (8 in.) x 2346-mm (92 ³ / ₈ in.) Center
T164728	Cutting Edge	1	152-mm (6 in.) x 2397-mm (94 ³ / ₈ in.) Base Edge
T143804	Cutting Edge	1	203-mm (8 in.) x 2394-mm (94 ¹ / ₄ in.) Center
T128538	Cutting Edge	1	203-mm (8 in.) x 2350-mm (92 ¹ / ₂ in.) Base Edge
T84194	Cutting Edge	1	203-mm (8 in.) x 2346-mm (92 ³ / ₈ in.) Center
T143802	Cutting Edge	1	203-mm (8 in.) x 2292-mm (90 ¹ / ₄ in.) Multi-Purpose Dozer Center
T143679	Cutting Edge	1	102-mm (4 in.) x 2267-mm (89 ¹ / ₄ in.) Multi-Purpose Clam Edge
T166474	Cutting Edge	1	203-mm (8 in.) x 2346-mm (92 ³ / ₈ in.) Base Edge

410E (continued)

Blade Position

Part No.	Part Name	Qty.	Remarks
T84194	Cutting Edge	1	203-mm (8 in.) x 2346-mm (92 ³ / ₈ in.) Center
T166472	Cutting Edge	1	203-mm (8 in.) x 2292-mm (90 ¹ / ₄ in.) Multi-Purpose Dozer Center

410J / 410G

Loader Bucket, 0.96 m³ (1.25 cu. yd.)

Part No.	Part Name	Qty.	Remarks
T150487	Cutting Edge	1	0.96-m ³ (1.25 cu. yd.) SBF Welded On
T150517	Cutting Edge	1	19-mm (3/4 in.) x 203-mm (8 in.) DBF x 2184-mm (86 in.) Auxiliary

Loader Bucket, 1.0 m³ (1.31 cu. yd.)/1.15 m³ (1.50 cu. yd.)

Part No.	Part Name	Qty.	Remarks
T118768	Cutting Edge	1	1.00-m ³ (1.31 cu. yd.), 19-mm (3/4 in.) SBF
T164728	Cutting Edge	1	1.15-m ³ (1.5 cu. yd.), 19-mm (3/4 in.) SBF
T84194	Cutting Edge	1	1.00-m ³ (1.31 cu. yd.), 19-mm (3/4 in.) x 203-mm (8 in.) DBF x 2337 mm (92 ³ / ₈ in.) Auxiliary
T84194HD	Dura-Max Cutting Edge	1	25.4-mm (1 in.) x 203-mm (8 in.) DBF x 2337 mm (92 ³ / ₈ in.) Auxiliary
T143804	Cutting Edge	1	1.15-m ³ (1.5 cu. yd.), 19-mm (3/4 in.) x 203-mm (8 in.) DBF x 2393 mm (94 ¹ / ₄ in.) Auxiliary

Multi-Purpose Bucket

Part No.	Part Name	Qty.	Remarks
T143802	Cutting Edge	1	2083-mm (82 in.) Rear
T128538	Cutting Edge	1	Front
T84194	Cutting Edge	1	Front Auxiliary
T84194HD	Dura-Max Cutting Edge	1	Front Auxiliary

510D / 510C / 610D / 610C

Blade Position

Part No.	Part Name	Qty.	Remarks
T118977	Cutting Edge	1	152-mm (6 in.) x 2288-mm (90 ⁵ / ₆₄ in.) Base Edge
T84194	Cutting Edge	1	203-mm (8 in.) x 2346-mm (92 ³ / ₈ in.) Center
T118768	Cutting Edge	1	152-mm (6 in.) x 2346-mm (92 ³ / ₈ in.) Base Edge
T84194	Cutting Edge	1	203-mm (8 in.) x 2346-mm (92 ³ / ₈ in.) Center
T142888	Cutting Edge	1	203-mm (8 in.) x 2359-mm (92 ⁷ / ₈ in.) Base Edge

Backhoe loaders

510D / 510C / 610D / 610C (continued)

Blade Position

Part No.	Part Name	Qty.	Remarks
T126774	Cutting Edge	1	203-mm (8 in.) x 2463-mm (97 in.) Center
T128538	Cutting Edge	1	203-mm (8 in.) x 2350-mm (92½ in.) Base Edge
T84194	Cutting Edge	1	203-mm (8 in.) x 2346-mm (92¾ in.) Center
T143802	Cutting Edge	1	203-mm (8 in.) x 2292-mm (90¼ in.) Multi-Purpose Dozer Center
T143679	Cutting Edge	1	102-mm (4 in.) x 2267-mm (89¼ in.) Multi-Purpose Clam Edge

710D

Blade Position

Part No.	Part Name	Qty.	Remarks
T142888	Cutting Edge	1	203-mm (8 in.) x 2359-mm (92¾ in.) Base Edge
T84194	Cutting Edge	1	203-mm (8 in.) x 2346-mm (92¾ in.) Center
T143074	Cutting Edge	1	203-mm (8 in.) x 2463-mm (97 in.) Base Edge
T126774	Cutting Edge	1	203-mm (8 in.) x 2463-mm (97 in.) Center
T128539	Cutting Edge	1	203-mm (8 in.) x 2451-mm (96½ in.) Base Edge
T126774	Cutting Edge	1	203-mm (8 in.) x 2463-mm (97 in.) Center
T143804	Cutting Edge	1	203-mm (8 in.) x 2394-mm (94¼ in.) Multi-Purpose Dozer Center
T143690	Cutting Edge	1	102-mm (4 in.) x 2369-mm (93¼ in.) Multi-Purpose Clam Edge

710J / 710G

Loader Bucket, 1.24 m³ (1.62 cu. yd.)/1.43 m³ (1.87 cu. yd.)

Part No.	Part Name	Qty.	Remarks
T143074	Dura-Max Cutting Edge	1	
T126774	Dura-Max Cutting Edge	1	Auxiliary
T126774HD	Dura-Max Cutting Edge	1	Auxiliary

Multi-Purpose Bucket

Part No.	Part Name	Qty.	Remarks
T143804	Cutting Edge	1	Rear
T128539	Cutting Edge	1	Front
T126774	Dura-Max Cutting Edge	1	16-mm (5⁄8 in.) x 203-mm (8 in.) DBF x 2463 mm (97 in.) Front Auxiliary

Backhoe loaders

710J / 710G (continued)

Loader Coupler Bucket, 1.53 m³ (2.0 cu. yd.)

Part No.	Part Name	Qty.	Remarks
T157282	Dura-Max Cutting Edge	1	Welded On
T157311	Cutting Edge	2	Auxiliary DBF Inner
T146672	Cutting Edge	2	Auxiliary DBF Outer

Quick-Coupler Multi-Purpose Bucket

Part No.	Part Name	Qty.	Remarks
T166454	Cutting Edge	1	2184-mm (86 in.) DBF Rear
T143804	Cutting Edge	1	2337-mm (92 in.) DBF Rear
T166455	Cutting Edge	1	2184-mm (86 in.) Front Welded On
T150517	Cutting Edge	1	2184-mm (86 in.) Front Auxiliary
T128538	Cutting Edge	1	2337-mm (92 in.) Front Welded On
T84194	Cutting Edge	1	2337-mm (92 in.) Front Auxiliary

Crawler dozers

350D / 350C / 350B

Blade Position

Part No.	Part Name	Qty.	Remarks
U11711	Cutting Edge	1	Center
U11708	Cutting Edge	2	Level Cut LH/RH End Bit
U11707	Cutting Edge	1	Center
U41063	Cutting Edge	2	Level Cut LH/RH End Bit for Extended Dozer
U11714	Cutting Edge	1	Center
U15161	Cutting Edge	1	Center

400G

Blade Position

Part No.	Part Name	Qty.	Remarks
T127618	Cutting Edge	1	Center
T31148	Cutting Edge	2	Level Cut LH/RH End Bit
U16562	Cutting Edge	1	Hot Cup RH End Bit
U16563	Cutting Edge	1	Hot Cup LH End Bit
U16748	Cutting Edge	1	Center
T31148	Cutting Edge	2	Level Cut LH/RH End Bit

450E / 450D / 450C / 450B

Blade Position

Part No.	Part Name	Qty.	Remarks
U16748	Cutting Edge	1	Center
T31148	Cutting Edge	2	Level Cut LH/RH End Bit
U16562	Cutting Edge	1	Hot Cup RH End Bit
U16563	Cutting Edge	1	Hot Cup LH End Bit
T32742	Cutting Edge	1	Center
U16814	Cutting Edge	1	Center

450G

Blade Position

Part No.	Part Name	Qty.	Remarks
T127297	Cutting Edge	1	Center
T120978	Cutting Edge	2	Level Cut LH/RH End Bit
T84555	Cutting Edge	1	Hot Cup RH End Bit
T84556	Cutting Edge	1	Hot Cup LH End Bit
T120979	Cutting Edge	1	Center
T120979SUP	Cutting Edge	1	Dozer Blade Support
T140560	Cutting Edge	1	Center
T120981	Cutting Edge	1	Center
550HSUP	Cutting Edge	1	Dozer Blade Support
T172943	Cutting Edge	1	Center

450J / 550J / 650J / 450H / 550H / 650H

Blade

Part No.	Part Name	Qty.	Remarks
T120979	Cutting Edge	1	2463-mm (97 in.) Blade, Center
T127297	Cutting Edge	1	2286-mm (90 in.) Blade, Center
T172943	Cutting Edge	1	3150-mm (124 in.) Blade, Center
T140560	Cutting Edge	1	2921-mm (115 in.) Blade, Center
T162841	Dura-Max Cutting Edge	2	Standard End
T182280	Dura-Max Cutting Edge	1	Straight RH End Bit
T182281	Dura-Max Cutting Edge	1	Straight LH End Bit
T182304	Dura-Max Cutting Edge	1	Cupped RH End Bit
T182253	Dura-Max Cutting Edge	1	Cupped LH End Bit

550B / 550A

Blade Position

Part No.	Part Name	Qty.	Remarks
U16748	Cutting Edge	1	Center
T31148	Cutting Edge	2	Level Cut LH/RH End Bit
U16562	Cutting Edge	1	Hot Cup RH End Bit
U16563	Cutting Edge	1	Hot Cup LH End Bit
T32742	Cutting Edge	1	Center
U16814	Cutting Edge	1	Center Center

550G / 650G

Blade Position

Part No.	Part Name	Qty.	Remarks
T120979	Cutting Edge	1	Center
T120978	Cutting Edge	2	Level Cut LH/RH End Bit
T84555	Cutting Edge	1	Hot Cup RH End Bit
T84556	Cutting Edge	1	Hot Cup LH End Bit
T120979SUP	Cutting Edge	1	Dozer Blade Support
T120980	Cutting Edge	1	Center
D27661	Cutting Edge	1	Dozer Blade Support
T140560	Cutting Edge	1	Center
T120981	Cutting Edge	1	Center
550HSUP	Cutting Edge	1	Dozer Blade Support
T155646	Cutting Edge	1	Center
650HSUP	Cutting Edge	1	Dozer Blade Support

Crawler dozers

550J / 650J

Blade

Part No.	Part Name	Qty.	Remarks
T155646	Cutting Edge	1	3251-mm (128 in.) Blade, Center

700H

Blade

Part No.	Part Name	Qty.	Remarks
T224178	Dura-Max Cutting Edge	1	3048 mm (120 in.)
T224179	Dura-Max Cutting Edge	1	3095 mm (132 in.)
T162841	Dura-Max Cutting Edge	2	End Bit
T182280	Dura-Max Cutting Edge	1	Straight RH End Bit
T182281	Dura-Max Cutting Edge	1	Straight LH End Bit
T182304	Dura-Max Cutting Edge	1	Cupped RH End Bit
T182253	Dura-Max Cutting Edge	1	Cupped LH End Bit

700J

Blade

Part No.	Part Name	Qty.	Remarks
T223519	Dura-Max Cutting Edge	1	Straight RH End Bit
T223520	Dura-Max Cutting Edge	1	Straight LH End Bit
T224178	Dura-Max Cutting Edge	1	3048-mm (120 in.) Blade Center
T224179	Dura-Max Cutting Edge	1	3095-mm (132 in.) Blade Center
T212049	Dura-Max Cutting Edge	1	Heavy-Duty RH End Bit
T212047	Dura-Max Cutting Edge	1	Heavy-Duty LH End Bit

750B / 750A

Blade

Part No.	Part Name	Qty.	Remarks
T73281	Cutting Edge	1	Center
T49155	Cutting Edge	1	Level Cut RH End Bit
T49156	Cutting Edge	1	Level Cut LH End Bit
T49157	Cutting Edge	1	Hot Cup RH End Bit
T49158	Cutting Edge	1	Hot Cup LH End Bit
T58191	Cutting Edge	1	Level Cut RH End Bit
T58192	Cutting Edge	1	Level Cut LH End Bit
T59155	Cutting Edge	1	Hot Cup RH End Bit
T59156	Cutting Edge	1	Hot Cup LH End Bit
T79194	Cutting Edge	1	Center
T79280	Cutting Edge	2	End
T49153	Cutting Edge	1	Optional One-Piece Edge
T79198	Cutting Edge	1	Center
T79197	Cutting Edge	2	End
T60679	Cutting Edge	1	Optional One-Piece Edge
T79195	Cutting Edge	2	End
T68896	Cutting Edge	1	Optional One-Piece Edge
T79196	Cutting Edge	1	Center
T62577	Cutting Edge	1	Optional One-Piece Edge
T58190	Cutting Edge	1	Optional One-Piece Edge
T79192	Cutting Edge	1	Center
T79199	Cutting Edge	2	End
T65937	Cutting Edge	1	Optional One-Piece Edge

750B

Blade Position

Part No.	Part Name	Qty.	Remarks
T79192	Cutting Edge	1	Center
T79197	Cutting Edge	2	End
T153378	Cutting Edge	1	Level Cut RH End Bit
T153379	Cutting Edge	1	Level Cut LH End Bit
T112067	Cutting Edge	1	Hot Cup RH End Bit
T112068	Cutting Edge	1	Hot Cup LH End Bit
T58191	Cutting Edge	1	Level Cut RH End Bit
T58192	Cutting Edge	1	Level Cut LH End Bit
T59155	Cutting Edge	1	Hot Cup RH End Bit
T59156	Cutting Edge	1	Hot Cup LH End Bit

Crawler dozers

750C

Blade Position

Part No.	Part Name	Qty.	Remarks
T79198	Cutting Edge	1	Center
T79197	Cutting Edge	2	End
T58191	Cutting Edge	1	Level Cut RH End Bit
T58192	Cutting Edge	1	Level Cut LH End Bit
T59155	Cutting Edge	1	Hot Cup RH End Bit
T59156	Cutting Edge	1	Hot Cup LH End Bit
T79192	Cutting Edge	1	Center
T153378	Cutting Edge	1	Level Cut RH End Bit
T153379	Cutting Edge	1	Level Cut LH End Bit
T112067	Cutting Edge	1	Hot Cup RH End Bit
T112068	Cutting Edge	1	Hot Cup LH End Bit
T161730	Cutting Edge	1	Level Cut RH End Bit
T161731	Cutting Edge	1	Level Cut LH End Bit
T166807	Cutting Edge	1	Hot Cup RH End Bit
T166806	Cutting Edge	1	Hot Cup LH End Bit
T79196	Cutting Edge	1	Center
T79199	Cutting Edge	2	End
T79193	Cutting Edge	2	End
T166169	Cutting Edge	1	Center
T166168	Cutting Edge	2	End
T160425	Cutting Edge	1	Level Cut RH End Bit
T160426	Cutting Edge	1	Level Cut LH End Bit
T160575	Cutting Edge	1	Hot Cup RH End Bit
T160576	Cutting Edge	1	Hot Cup LH End Bit

750C-II

Blade, Straight

Part No.	Blade Size	Qty.	Remarks
T79198	3048-mm (120 in.) Rockland	1	Center
T79197	3048-mm (120 in.) Rockland	2	End
T58191	3048-mm (120 in.) Rockland	1	Level-Cut End Bit RH
T58192	3048-mm (120 in.) Rockland	1	Level-Cut End Bit LH
T59155	3048-mm (120 in.) Rockland	1	Hot-Cup End Bit RH
T59156	3048-mm (120 in.) Rockland	1	Hot-Cup End Bit LH
T79196	3095-mm (132 in.) Rockland	1	Center
T79197	3095-mm (132 in.) Rockland	2	End
T58191	3095-mm (132 in.) Rockland	1	Level-Cut End Bit RH
T58192	3095-mm (132 in.) Rockland	1	Level-Cut End Bit LH
T59155	3095-mm (132 in.) Rockland	1	Hot-Cup End Bit RH
T59156	3095-mm (132 in.) Rockland	1	Hot-Cup End Bit LH

750C-II (continued)

Blade, Semi-U

Part No.	Blade Size	Qty.	Remarks
T79192	3200-mm (126 in.) Rockland	1	Center
T79197	3200-mm (126 in.) Rockland	2	End
T153378	3200-mm (126 in.) Rockland	1	Level-Cut End Bit RH
T153379	3200-mm (126 in.) Rockland	1	Level-Cut End Bit LH
T112067	3200-mm (126 in.) Rockland	1	Hot-Cup End Bit RH
T112068	3200-mm (126 in.) Rockland	1	Hot-Cup End Bit LH
T166169	3658-mm (144 in.) Rockland	1	Center
T166463	3658-mm (144 in.) Rockland	2	End
T160425	3658-mm (144 in.) Rockland	1	Level-Cut End Bit RH
T160426	3658-mm (144 in.) Rockland	1	Level-Cut End Bit LH
T160575	3658-mm (144 in.) Rockland	1	Hot-Cup End Bit RH
T160576	3658-mm (144 in.) Rockland	1	Hot-Cup End Bit LH
T166169	3962-mm (156 in.) Rockland	1	Center
T166168	3962-mm (156 in.) Rockland	2	End
T160425	3962-mm (156 in.) Rockland	1	Level-Cut End Bit RH
T160426	3962-mm (156 in.) Rockland	1	Level-Cut End Bit LH
T160575	3962-mm (156 in.) Rockland	1	Hot-Cup End Bit RH
T160576	3962-mm (156 in.) Rockland	1	Hot-Cup End Bit LH

Blade, Power Angle Tilt (PAT)

Part No.	Blade Size	Qty.	Remarks
T79192	3295-mm (129 in.) Weldco	1	Center
T79197	3295-mm (129 in.) Weldco	2	End
T161730	3295-mm (129 in.) Weldco	1	Level-Cut End Bit RH
T161731	3295-mm (129 in.) Weldco	1	Level-Cut End Bit LH
T166807	3295-mm (129 in.) Weldco	1	Hot-Cup End Bit RH
T166806	3295-mm (129 in.) Weldco	1	Hot-Cup End Bit LH

Blade, Angle

Part No.	Blade Size	Qty.	Remarks
T79192	3785-mm (149 in.) Rockland	1	Center
T79199	3785-mm (149 in.) Rockland	2	End
T58191	3785-mm (149 in.) Rockland	1	Level-Cut End Bit RH
T58192	3785-mm (149 in.) Rockland	1	Level-Cut End Bit LH
T59155	3785-mm (149 in.) Rockland	1	Hot-Cup End Bit RH
T59156	3785-mm (149 in.) Rockland	1	Hot-Cup End Bit LH

Blade, Power Angle Tilt (PAT), LGP

Part No.	Blade Size	Qty.	Remarks
T79192	3861-mm (152 in.) Weldco	1	Center
T79193	3861-mm (152 in.) Weldco	2	End
T58191	3861-mm (152 in.) Weldco	1	Level-Cut End Bit RH
T58192	3861-mm (152 in.) Weldco	1	Level-Cut End Bit LH
T59155	3861-mm (152 in.) Weldco	1	Hot-Cup End Bit RH
T59156	3861-mm (152 in.) Weldco	1	Hot-Cup End Bit LH

Crawler dozers

750J

Blade, Power Angle Tilt (PAT), 3295 mm (129 in.)

Part No.	Part Name	Qty.	Remarks
T204082	Dura-Max Cutting Edge	1	Inner Center
T195673	Dura-Max Cutting Edge	2	Outer Center
T204080	Dura-Max Cutting Edge	1	Straight RH End Bit
T216392	Dura-Max Cutting Edge	1	Cupped RH End Bit
T204081	Dura-Max Cutting Edge	1	Straight LH End Bit
T216391	Dura-Max Cutting Edge	1	Cupped LH End Bit

Blade, Power Angle Tilt (PAT), 3962 mm (156 in.)

Part No.	Part Name	Qty.	Remarks
T204082	Dura-Max Cutting Edge	1	Inner Center
T204083	Dura-Max Cutting Edge	2	Outer Center
T204080	Dura-Max Cutting Edge	1	Straight RH End Bit
T216392	Dura-Max Cutting Edge	1	Cupped RH End Bit
T204081	Dura-Max Cutting Edge	1	Straight LH End Bit
T216391	Dura-Max Cutting Edge	1	Cupped LH End Bit

Blade, Semi-U, 3251 mm (128 in.)

Part No.	Part Name	Qty.	Remarks
T160425	Dura-Max Cutting Edge	1	RH End Bit
T160426	Dura-Max Cutting Edge	1	LH End Bit
T162524	Dura-Max Cutting Edge	2	Center

Blade, Semi-U, 3759 mm (148 in.)

Part No.	Part Name	Qty.	Remarks
T160425	Dura-Max Cutting Edge	1	RH End Bit
T160426	Dura-Max Cutting Edge	1	LH End Bit
T200701	Dura-Max Cutting Edge	2	Center

Blade, Straight, 3810 mm (150 in.)

Part No.	Part Name	Qty.	Remarks
T187243	Dura-Max Cutting Edge	1	Straight RH End Bit
T216395	Dura-Max Cutting Edge	1	Cupped RH End Bit
T187244	Dura-Max Cutting Edge	1	Straight LH End Bit
T216394	Dura-Max Cutting Edge	1	Cupped LH End Bit
T187988	Dura-Max Cutting Edge	1	Inner Center
T200759	Dura-Max Cutting Edge	2	Outer Center

Blade Reinforcement Kit, 3296 mm (129.75 in.)

Part No.	Part Name	Qty.	Remarks
T236313	Dura-Max Cutting Edge	1	LH End Bit
T236314	Dura-Max Cutting Edge	1	RH End Bit
T236315	Dura-Max Cutting Edge	1	Inner Center
T236317	Dura-Max Cutting Edge	2	Outer Center

Blade Reinforcement Kit, 3962 mm (156 in.)

Part No.	Part Name	Qty.	Remarks
T236313	Dura-Max Cutting Edge	1	LH End Bit
T236314	Dura-Max Cutting Edge	1	RH End Bit
T236315	Dura-Max Cutting Edge	1	Inner Center
T236316	Dura-Max Cutting Edge	2	Outer Center

764 HSD

Blade, 3095 mm (132 in.)

Part No.	Part Name	Qty.	Remarks
T224179	Dura-Max Cutting Edge	1	Center
T223519	Dura-Max Cutting Edge	1	RH End Bit
T223520	Dura-Max Cutting Edge	1	LH End Bit

Blade, 3810 mm (150 in.)

Part No.	Part Name	Qty.	Remarks
T286316	Dura-Max Cutting Edge	2	Center
T223519	Dura-Max Cutting Edge	1	RH End Bit
T223520	Dura-Max Cutting Edge	1	LH End Bit

850B / 850A

Blade Position

Part No.	Part Name	Qty.	Remarks
T79198	Cutting Edge	1	Center
T79200	Cutting Edge	2	End
T52751	Cutting Edge	1	Optional One-Piece Edge
T49155	Cutting Edge	1	Level Cut RH End Bit
T49156	Cutting Edge	1	Level Cut LH End Bit
T49157	Cutting Edge	1	Hot Cup RH End Bit
T49158	Cutting Edge	1	Hot Cup LH End Bit
T79194	Cutting Edge	2	End
T58191	Cutting Edge	1	Level Cut RH End Bit
T58192	Cutting Edge	1	Level Cut LH End Bit
T59155	Cutting Edge	1	Hot Cup RH End Bit
T59156	Cutting Edge	1	Hot Cup LH End Bit
T79192	Cutting Edge	1	Center
T79193	Cutting Edge	2	End
T58940	Cutting Edge	1	Optional One-Piece Edge

850B

Blade Position

Part No.	Part Name	Qty.	Remarks
T79199	Cutting Edge	1	Center
T153378	Cutting Edge	1	Level Cut RH End Bit
T153379	Cutting Edge	1	Level Cut LH End Bit
T112067	Cutting Edge	1	Hot Cup RH End Bit
T112068	Cutting Edge	1	Hot Cup LH End Bit

Crawler dozers

850C-II / 850C

Blade Position

Part No.	Part Name	Qty.	Remarks
T79198	Cutting Edge	1	Center
T79194	Cutting Edge	2	End
T58191	Cutting Edge	1	Level Cut RH End Bit
T58192	Cutting Edge	1	Level Cut LH End Bit
T59155	Cutting Edge	1	Hot Cup RH End Bit
T59156	Cutting Edge	1	Hot Cup LH End Bit
T79195	Cutting Edge	2	End
T153378	Cutting Edge	1	Level Cut RH End Bit
T153379	Cutting Edge	1	Level Cut LH End Bit
T112067	Cutting Edge	1	Hot Cup RH End Bit
T112068	Cutting Edge	1	Hot Cup LH End Bit
T162524	Cutting Edge	2	Center
T160425	Cutting Edge	1	Level Cut RH End Bit
T160426	Cutting Edge	1	Level Cut LH End Bit
T160575	Cutting Edge	1	Hot Cup RH End Bit
T160576	Cutting Edge	1	Hot Cup LH End Bit
T79199	Cutting Edge	2	End
T160421	Cutting Edge	2	Center
T79192	Cutting Edge	1	Center
T79193	Cutting Edge	1	End
T166169	Cutting Edge	1	Center
T166168	Cutting Edge	2	End

850C-II

Blade Position

Part No.	Part Name	Qty.	Remarks
T184052	Cutting Edge	3	Center
T184699	Cutting Edge	1	Level Cut LH End Bit
T184698	Cutting Edge	1	Level Cut RH End Bit
T186152	Cutting Edge	1	Hot Cup LH End Bit
T186153	Cutting Edge	1	Hot Cup RH End Bit
T187987	Cutting Edge	3	Center
T190207	Cutting Edge	3	Heavy-Duty Center
T187243	Cutting Edge	1	Level Cut RH End Bit
T187244	Cutting Edge	1	Level Cut LH End Bit
T190174	Cutting Edge	1	Heavy-Duty Level Cut RH End Bit
T190175	Cutting Edge	1	Heavy-Duty Level Cut LH End Bit
T216395	Cutting Edge	1	Hot Cup RH End Bit
T216394	Cutting Edge	1	Hot Cup LH End Bit
T184055	Cutting Edge	1	Center
T187988	Cutting Edge	1	Center
T190208	Cutting Edge	1	Heavy-Duty Center
T184056	Cutting Edge	2	End
T187989	Cutting Edge	2	End
T190209	Cutting Edge	2	Heavy-Duty End

850J

Blade, Power Angle Tilt (PAT), 3708 mm (146 in.)

Part No.	Part Name	Qty.	Remarks
T187243	Dura-Max Cutting Edge	1	Straight RH End Bit
T216395	Dura-Max Cutting Edge	1	Cupped RH End Bit
T187244	Dura-Max Cutting Edge	1	Straight LH End Bit
T216394	Dura-Max Cutting Edge	1	Cupped LH End Bit
T187987	Dura-Max Cutting Edge	3	Center

Blade, Power Angle Tilt (PAT), 4013 mm (158 in.)

Part No.	Part Name	Qty.	Remarks
T187243	Dura-Max Cutting Edge	1	Straight RH End Bit
T216395	Dura-Max Cutting Edge	1	Cupped RH End Bit
T187244	Dura-Max Cutting Edge	1	Straight LH End Bit
T216394	Dura-Max Cutting Edge	1	Cupped LH End Bit
T187987	Dura-Max Cutting Edge	2	Outer Center
T187988	Dura-Max Cutting Edge	1	Inner Center

Blade, Power Angle Tilt (PAT), 4267 mm (168 in.)

Part No.	Part Name	Qty.	Remarks
T187243	Dura-Max Cutting Edge	1	Straight RH End Bit
T216395	Dura-Max Cutting Edge	1	Cupped RH End Bit
T187244	Dura-Max Cutting Edge	1	Straight LH End Bit
T216394	Dura-Max Cutting Edge	1	Cupped LH End Bit
T187988	Dura-Max Cutting Edge	1	Inner Center
T187989	Dura-Max Cutting Edge	2	Outer Center

Blade, Semi-U, 3251 mm (128 in.)

Part No.	Part Name	Qty.	Remarks
T162524	Dura-Max Cutting Edge	2	Center
T160425	Dura-Max Cutting Edge	1	Straight RH End Bit
T160575	Dura-Max Cutting Edge	1	Cupped RH End Bit
T160426	Dura-Max Cutting Edge	1	Straight LH End Bit
T160576	Dura-Max Cutting Edge	1	Cupped LH End Bit

Blade, Semi-U, 3556 mm (140 in.)

Part No.	Part Name	Qty.	Remarks
T160421	Dura-Max Cutting Edge	2	Center
T160425	Dura-Max Cutting Edge	1	RH End Bit
T160426	Dura-Max Cutting Edge	1	LH End Bit

Blade, Semi-U, 3861 mm (152 in.)

Part No.	Part Name	Qty.	Remarks
T200600	Dura-Max Cutting Edge	2	Center
T160425	Dura-Max Cutting Edge	1	RH End Bit
T160426	Dura-Max Cutting Edge	1	LH End Bit

Crawler dozers

850J (continued)

Blade, Straight, 3912 mm (154 in.)

Part No.	Part Name	Qty.	Remarks
T187243	Dura-Max Cutting Edge	1	Straight RH End Bit
T216395	Dura-Max Cutting Edge	1	Cupped RH End Bit
T187244	Dura-Max Cutting Edge	1	Straight LH End Bit
T216394	Dura-Max Cutting Edge	1	Cupped LH End Bit
T187988	Dura-Max Cutting Edge	1	Inner Center
T200726	Dura-Max Cutting Edge	2	Outer Center

Blade Reinforcement Kit, 3708 mm (146 in.)

Part No.	Part Name	Qty.	Remarks
T190174	Dura-Max Cutting Edge	1	RH End Bit
T190175	Dura-Max Cutting Edge	1	LH End Bit
T190207	Dura-Max Cutting Edge	3	Center

Blade Reinforcement Kit, 4013 mm (158 in.)

Part No.	Part Name	Qty.	Remarks
T190174	Dura-Max Cutting Edge	1	RH End Bit
T190175	Dura-Max Cutting Edge	1	LH End Bit
T190207	Dura-Max Cutting Edge	2	Outer Center
T190208	Dura-Max Cutting Edge	1	Inner Center

Blade Reinforcement Kit, 4267 mm (168 in.)

Part No.	Part Name	Qty.	Remarks
T190174	Dura-Max Cutting Edge	1	RH End Bit
T190175	Dura-Max Cutting Edge	1	LH End Bit
T190208	Dura-Max Cutting Edge	1	Inner Center
T190209	Dura-Max Cutting Edge	2	Outer Center

850K

Blade, Semi-U, 3251 mm (128 in.)

Part No.	Part Name	Qty.	Remarks
T162524	Dura-Max Cutting Edge	2	Center
T160575	Dura-Max Cutting Edge	1	Cupped RH End Bit
T160425	Dura-Max Cutting Edge	1	Straight RH End Bit
T160426	Dura-Max Cutting Edge	1	Straight LH End Bit
T160576	Dura-Max Cutting Edge	1	Cupped LH End Bit

Blade, Semi-U, 3556 mm (140 in.)

Part No.	Part Name	Qty.	Remarks
T160421	Dura-Max Cutting Edge	2	Center
T160425	Dura-Max Cutting Edge	1	RH End Bit
T160426	Dura-Max Cutting Edge	1	LH End Bit

Blade, Semi-U, 3861 mm (152 in.)

Part No.	Part Name	Qty.	Remarks
T200600	Dura-Max Cutting Edge	2	Center
T160425	Dura-Max Cutting Edge	1	RH End Bit
T160426	Dura-Max Cutting Edge	1	LH End Bit

850K (continued)

Blade, Straight, 3912 mm (154 in.)

Part No.	Part Name	Qty.	Remarks
T187243	Dura-Max Cutting Edge	1	RH End Bit
T187244	Dura-Max Cutting Edge	1	LH End Bit
T187988	Dura-Max Cutting Edge	1	Inner Center
T200726	Dura-Max Cutting Edge	2	Outer Center

950C

Blade, Angle

Part No.	Part Name	Qty.	Remarks
T223473	Cutting Edge	4	Center
T223474	End Bit	1	LH End Bit
T223475	End Bit	1	RH End Bit

Blade, Straight

Part No.	Part Name	Qty.	Remarks
T223468	Dura-Max Cutting Edge	4	Standard Center
T223469	Dura-Max Cutting Edge	4	Heavy-Duty Center
T223496	Dura-Max Cutting Edge	1	Standard LH End Bit
T223798	Dura-Max Cutting Edge	1	Heavy-Duty LH End Bit
T223497	Dura-Max Cutting Edge	1	Standard RH End Bit
T223499	Dura-Max Cutting Edge	1	Heavy-Duty RH End Bit

Blade, Semi-U

Part No.	Part Name	Qty.	Remarks
T223468	Dura-Max Cutting Edge	1	Standard Inner Center
T223469	Dura-Max Cutting Edge	1	Heavy-Duty Inner Center
T223493	Dura-Max Cutting Edge	2	Standard Outer Center
T223470	Dura-Max Cutting Edge	2	Heavy-Duty Outer Center
T223494	Dura-Max Cutting Edge	1	Standard LH End Bit
T223471	Dura-Max Cutting Edge	1	Heavy-Duty LH End Bit
T223495	Dura-Max Cutting Edge	1	Standard RH End Bit
T223472	Dura-Max Cutting Edge	1	Heavy-Duty RH End Bit

950J

Blade, Semi-U

Part No.	Part Name	Qty.	Remarks
T223468	Dura-Max Cutting Edge	1	Inner Center
T223469	Dura-Max Cutting Edge	1	Heavy-Duty Inner Center
T223493	Dura-Max Cutting Edge	2	Outer Center
T223470	Dura-Max Cutting Edge	2	Heavy-Duty Outer Center
T223494	Dura-Max Cutting Edge	1	Standard LH End Bit
T223471	Dura-Max Cutting Edge	1	Heavy-Duty LH End Bit
T236769	Dura-Max Cutting Edge	1	Straight LH End Bit
T223495	Dura-Max Cutting Edge	1	Standard RH End Bit
T223472	Dura-Max Cutting Edge	1	Heavy-Duty RH End Bit
T236770	Dura-Max Cutting Edge	1	Straight RH End Bit

Crawler dozers

950J (continued)

Blade, LGP Straight

Part No.	Part Name	Qty.	Remarks
T223468	Dura-Max Cutting Edge	4	Center
T223469	Dura-Max Cutting Edge	4	Heavy-Duty Center
T223906	Dura-Max Cutting Edge	1	LH End Bit
T223798	Dura-Max Cutting Edge	1	Heavy-Duty LH End Bit
T223907	Dura-Max Cutting Edge	1	RH End Bit
T223499	Dura-Max Cutting Edge	1	Heavy-Duty RH End Bit

1050C

Blade, U

Part No.	Part Name	Qty.	Remarks
T223794	Dura-Max Cutting Edge	2	Outer Center
T223795	Dura-Max Cutting Edge	2	Heavy-Duty Outer Center
T223796	Dura-Max Cutting Edge	2	Inner Center
T223797	Dura-Max Cutting Edge	2	Heavy-Duty Inner Center
T223798	Dura-Max Cutting Edge	1	LH End Bit
T223800	Dura-Max Cutting Edge	1	Heavy-Duty LH End Bit
T223799	Dura-Max Cutting Edge	1	RH End Bit
T223801	Dura-Max Cutting Edge	1	Heavy-Duty RH End Bit

Blade, Semi-U

Part No.	Part Name	Qty.	Remarks
T223802	Dura-Max Cutting Edge	2	Outer Center
T223803	Cutting Edge	2	Heavy-Duty Outer Center
T223804	Dura-Max Cutting Edge	1	Inner Center
T223805	Cutting Edge	1	Heavy-Duty Inner Center
T223799	Dura-Max Cutting Edge	1	Standard RH End Bit
T223801	End Bit	1	Heavy-Duty LH End Bit
T219091	Dura-Max Cutting Edge	1	Straight RH End Bit
T223798	Dura-Max Cutting Edge	1	Straight LH End Bit
T223800	Dura-Max Cutting Edge	1	Heavy-Duty LH End Bit
T219090	Dura-Max Cutting Edge	1	Straight LH End Bit

1050J

Blade, U

Part No.	Part Name	Qty.	Remarks
T223794	Dura-Max Cutting Edge	2	Outer Center
T223795	Dura-Max Cutting Edge	2	Heavy-Duty Outer Center
T223796	Dura-Max Cutting Edge	2	Inner Center
T223797	Dura-Max Cutting Edge	2	Heavy-Duty Outer Center
T223798	Dura-Max Cutting Edge	1	LH End Bit
T223800	Dura-Max Cutting Edge	1	Heavy-Duty LH End Bit
T223799	Dura-Max Cutting Edge	1	RH End Bit
T223801	Dura-Max Cutting Edge	1	Heavy-Duty RH End Bit

Blade, Semi-U

Part No.	Part Name	Qty.	Remarks
T223804	Dura-Max Cutting Edge	1	Inner Center
T223805	Dura-Max Cutting Edge	1	Heavy-Duty Inner Center
T228650	Cutting Edge	2	Outer Center
T228647	End Bit	1	RH End Bit
T228649	End Bit	1	Heavy-Duty RH End Bit
T228646	End Bit	1	LH End Bit
T228648	End Bit	1	Heavy-Duty LH End Bit

Blade, Coal

Part No.	Part Name	Qty.	Remarks
LW9033958	Cutting Edge	2	Outer Center
LW9033959	Cutting Edge	2	Inner Center
LW9043494	End Bit	1	LH End Bit
LW9043495	End Bit	1	RH End Bit

Crawler loaders

350D / 350C / 350B

Bucket			
Part No.	Part Name	Qty.	Remarks
U11792	Cutting Edge	1	Bent-Up Base Edge
T84180	Cutting Edge	1	One-Piece Bolt-On
T45864	Cutting Edge	1	Bent-Up Base Edge
U16748	Cutting Edge	1	Multi-Purpose Dozer Center
T45861	Cutting Edge	1	Multi-Purpose Clam Edge
U14065	Cutting Edge	1	Bent-Up Base Edge without Holes
PBU14065	Cutting Edge	1	Bent-Up Base Edge
T120980	Cutting Edge	1	One-Piece Bolt-On

400

Bucket			
Part No.	Part Name	Qty.	Remarks
U11768	Cutting Edge	1	Bent-Up Base Edge without Holes
PBU11768	Cutting Edge	1	Bent-Up Base Edge
U11714	Cutting Edge	1	One-Piece Bolt-On
T105892	Cutting Edge	1	Bent-Up Base Edge without Holes
PBT105892	Cutting Edge	1	Bent-Up Base Edge
T103142	Cutting Edge	1	Center
T103141	Cutting Edge	2	End

450B

Bucket			
Part No.	Part Name	Qty.	Remarks
U16966	Cutting Edge	1	Bent-Up Base Edge
T84182	Cutting Edge	1	One-Piece Bolt-On
U11711	Cutting Edge	1	Multi-Purpose Dozer Center
U11708	Cutting Edge	2	Multi-Purpose Dozer End
T43485	Cutting Edge	1	Multi-Purpose Clam Edge

450C / 450B

Bucket			
Part No.	Part Name	Qty.	Remarks
U16966	Cutting Edge	1	Bent-Up Base Edge
T84182	Cutting Edge	1	One-Piece Bolt-On
U40116	Cutting Edge	1	Bent-Up Base Edge without Holes

455C

Bucket			
Part No.	Part Name	Qty.	Remarks
U40116	Cutting Edge	1	Bent-Up Base Edge without Holes

455E / 455D

Bucket			
Part No.	Part Name	Qty.	Remarks
U16966	Cutting Edge	1	Bent-Up Base Edge
T84182	Cutting Edge	1	One-Piece Bolt-On
U11711	Cutting Edge	1	Multi-Purpose Dozer Center
U11708	Cutting Edge	2	Multi-Purpose Dozer End
T43485	Cutting Edge	1	Multi-Purpose Clam Edge

455G

Bucket			
Part No.	Part Name	Qty.	Remarks
T106761	Cutting Edge	1	Base Edge for Bolt-On Edges or Teeth
T151773	Cutting Edge	1	One-Piece Bolt-On
T124077	Cutting Edge	1	Multi-Purpose Dozer Center
U11708	Cutting Edge	2	Multi-Purpose Dozer End
T124082	Cutting Edge	1	Multi-Purpose Clam Edge
T124268	Cutting Edge	1	Base Edge for Bolt-On Edges or Teeth
T151774	Cutting Edge	1	One-Piece Bolt-On

555B / 555A

Bucket			
Part No.	Part Name	Qty.	Remarks
U16966	Cutting Edge	1	Bent-Up Base Edge
T84182	Cutting Edge	1	One-Piece Bolt-On
U11711	Cutting Edge	1	Multi-Purpose Dozer Center
U11708	Cutting Edge	2	Multi-Purpose Dozer End
T43485	Cutting Edge	1	Multi-Purpose Clam Edge
U40116	Cutting Edge	1	Bent-Up Base Edge without Holes

555G

Bucket			
Part No.	Part Name	Qty.	Remarks
T105643	Cutting Edge	1	Base Edge for Bolt-On Edges or Teeth
T149487	Cutting Edge	1	One-Piece Bolt-On
T105643	Cutting Edge	1	Base Edge for Bolt-On Edges or Teeth
T149487	Cutting Edge	1	One-Piece Bolt-On
T124094	Cutting Edge	1	Multi-Purpose Dozer Center
U11708	Cutting Edge	2	Multi-Purpose Dozer End
T124099	Cutting Edge	1	Multi-Purpose Clam Edge
T124257	Cutting Edge	1	Base Edge for Bolt-On Edges or Teeth
T151772	Cutting Edge	1	One-Piece Bolt-On

Crawler loaders

605C

Bucket, Standard/Multi-Purpose, with Teeth

Part No.	Part Name	Qty.	Remarks
T219617	Dura-Max Cutting Edge	2	End
T219616	Dura-Max Cutting Edge	5	Center

Bucket, Standard

Part No.	Part Name	Qty.	Remarks
T219615	Dura-Max Cutting Edge	1	
LW9749512	End Bit	1	LH Upper
LW9749513	End Bit	1	RH Upper
LW7407050	End Bit	1	LH Lower
LW7407051	End Bit	1	RH Lower

Bucket, Multi-Purpose

Part No.	Part Name	Qty.	Remarks
T219618	Cutting Edge	2	Rear
LW9931613	Cutting Edge	2	Sides
T219615	Dura-Max Cutting Edge	1	Center
LW7407050	End Bit	1	RH End
LW7407051	End Bit	1	LH End

Bucket, Standard, with Reversible Cutting Edge

Part No.	Part Name	Qty.	Remarks
LW10287327	Cutting Edge	2	End
AT301554	Cutting Edge	2	Center

655B

Bucket

Part No.	Part Name	Qty.	Remarks
T104564	Cutting Edge	1	Base Edge for Bolt-On Edges or Teeth
T104563	Cutting Edge	1	Base Edge for Bolt-On Edges or Teeth
T131503	Cutting Edge	1	One-Piece Bolt-On
T80712	Cutting Edge	1	Multi-Purpose Dozer Center
T52515	Cutting Edge	2	Multi-Purpose Dozer End
T80713	Cutting Edge	1	Multi-Purpose Clam Edge
T106952	Cutting Edge	1	Base Edge for Bolt-On Edges or Teeth

655C Series-II

Bucket, Standard, with Teeth

Part No.	Part Name	Qty.	Remarks
AT279997	Dura-Max Cutting Edge	7	

Bucket, Standard

Part No.	Part Name	Qty.	Remarks
AT274361	Dura-Max Cutting Edge	1	Center
AT275509	End Bit	1	RH Upper
AT275510	End Bit	1	LH Upper
AT275134	End Bit	1	RH Lower
AT275135	End Bit	1	LH Lower

Bucket, Multi-Purpose

Part No.	Part Name	Qty.	Remarks
AT278482	Cutting Edge	3	Rear
AT279997	Dura-Max Cutting Edge	7	For Use with Teeth
AT274361	Dura-Max Cutting Edge	1	Center
AT278516	Cutting Edge	1	LH Side
AT275135	End Bit	1	LH Lower
AT278515	Cutting Edge	1	RH Side
AT275134	End Bit	1	RH Lower

Bucket, Standard, with Reversible Cutting Edge

Part No.	Part Name	Qty.	Remarks
AT301553	Cutting Edge	2	Center
AT301554	Cutting Edge	2	End

755B / 755A

Bucket

Part No.	Part Name	Qty.	Remarks
T104563	Cutting Edge	1	Base Edge for Bolt-On Edges or Teeth
T131503	Cutting Edge	1	One-Piece Bolt-On
T80712	Cutting Edge	1	Multi-Purpose Dozer Center
T52515	Cutting Edge	2	Multi-Purpose Dozer End
T80713	Cutting Edge	1	Multi-Purpose Clam Edge
T104563	Cutting Edge	1	Base Edge for Bolt-On Edges or Teeth
T131503	Cutting Edge	1	One-Piece Bolt-On

755B

Bucket

Part No.	Part Name	Qty.	Remarks
T106952	Cutting Edge	1	Base Edge for Bolt-On Edges or Teeth

Crawler loaders

755

Bucket			
Part No.	Part Name	Qty.	Remarks
T104564	Cutting Edge	1	Base Edge for Bolt-On Edges or Teeth
T50099	Cutting Edge	1	Base Edge for Bolt-On Edges or Teeth
T50084	Cutting Edge	1	Multi-Purpose Dozer Center
T52515	Cutting Edge	2	Multi-Purpose Dozer End
T50094	Cutting Edge	1	Multi-Purpose Clam Edge

755C

Bucket with Bolt-On Cutting Edges			
Part No.	Part Name	Qty.	Remarks
AT301551	Cutting Edge	2	
AT305970	Cutting Edge	2	

Bucket, Multi-Purpose			
Part No.	Part Name	Qty.	Remarks
AT278622	Cutting Edge	2	End
AT278623	Cutting Edge	1	Center

Bucket, Multi-Purpose, with Front Wear Plates and Cutting Edge			
Part No.	Part Name	Qty.	Remarks
AT276502	Dura-Max Cutting Edge	1	

Bucket, Standard, with Cutting Edge			
Part No.	Part Name	Qty.	Remarks
AT276502	Dura-Max Cutting Edge	1	

755D

Bucket, Standard, with Teeth			
Part No.	Part Name	Qty.	Remarks
AT279998	Dura-Max Cutting Edge	7	

Bucket, Standard			
Part No.	Part Name	Qty.	Remarks
LW9403035	Cutting Edge	1	Center
LW9402299	Cutting Edge	1	Upper Right Side
LW9402300	Cutting Edge	1	Upper Left Side
AT301551	Cutting Edge	2	Center
AT305970	Cutting Edge	2	End

Bucket, Multi-Purpose			
Part No.	Part Name	Qty.	Remarks
AT278623	Cutting Edge	1	Rear Center
LW9036915	Cutting Edge	2	Rear End
AT279998	Dura-Max Cutting Edge	7	For Use with Teeth
LW9403035	Cutting Edge	1	Front Center
LW5716023	Cutting Edge	1	RH End
LW5716022	Cutting Edge	1	LH End

755K

Bolt-On Cutting Edges			
Part No.	Part Name	Qty.	Remarks
T247224	Cutting Edge	2	End
T247225	Cutting Edge	2	Center

Bucket, 2.45 m ³ (3.2 cu. yd.)			
Part No.	Part Name	Qty.	Remarks
T247831	Plate	1	Center
T239994	Plate	2	End

Bucket, Multi-Purpose			
Part No.	Part Name	Qty.	Remarks
T249837	Cutting Edge	2	
T239994	Plate	2	End Bit

Auxiliary Teeth and Segments			
Part No.	Part Name	Qty.	Remarks
T240025	Dura-Max Cutting Edge	7	

855

Bucket			
Part No.	Part Name	Qty.	Remarks
T80813	Cutting Edge	1	Base Edge for Bolt-On Edges or Teeth
T55074	Cutting Edge	1	Bent-Up Base Edge
T53051	Cutting Edge	1	Multi-Purpose Dozer Center
T52515	Cutting Edge	2	Multi-Purpose Dozer End

Four-wheel-drive loaders

244E

Bucket			
Part No.	Part Name	Qty.	Remarks
T152658	Cutting Edge	1	Bent-Up Base Edge
AT108860	Cutting Edge	1	Center
AT108861	Cutting Edge	2	End

244H / 244E

Bucket			
Part No.	Part Name	Qty.	Remarks
T152355	Cutting Edge	1	Base Edge
T152344	Cutting Edge	1	Center
T152342	Cutting Edge	2	End

244J / 304J

Bucket with Bolt-On Cutting Edge, 0.8 m³ (1.0 cu. yd.)/1.1 m³ (1.4 cu. yd.)

Part No.	Part Name	Qty.	Remarks
AT314218	Cutting Edge	1	Weld On, 0.8 m ³ (1.0 cu. yd.)
AT314223	Cutting Edge	1	Weld On, 1.1 m ³ (1.4 cu. yd.)
AT314212	Cutting Edge	2	Outer; Use with AT314213 or AT314220
AT314213	Cutting Edge	2	Inner, 0.8 m ³ (1.0 cu. yd.)
AT314220	Cutting Edge	2	Inner, 1.1 m ³ (1.4 cu. yd.)

Bucket with Bolt-On Cutting Edge, 1.6 m³ (2.1 cu. yd.)/2.0 m³ (2.6 cu. yd.)

Part No.	Part Name	Qty.	Remarks
LW9068218	Cutting Edge	1	Weld On
AT314212	Cutting Edge	2	Outer
AT338317	Cutting Edge	2	Inner

304H

Bucket			
Part No.	Part Name	Qty.	Remarks
AT261936	Cutting Edge	1	Base Edge
AT261938	Cutting Edge	2	Center
AT261937	Cutting Edge	2	End

324H

Bolt-On Cutting Edge for 1.1-m³ (1.4 cu. yd.) x 2200-mm (86.6 in.)-Wide Bucket

Part No.	Part Name	Qty.	Remarks
AT261184	Cutting Edge	1	
AT261184	Cutting Edge	2	

Bolt-On Cutting Edge for 1.3-m³ (1.75 cu. yd.) x 2400-mm (94.5 in.)-Wide Bucket

Part No.	Part Name	Qty.	Remarks
AT250430	Cutting Edge	1	
AT250429	Cutting Edge	2	

324H (continued)

Weld-On Cutting Edge for 1.1-m³ (1.4 cu. yd.) x 2200-mm (86.6 in.)-Wide Bucket

Part No.	Part Name	Qty.	Remarks
AT261183	Dura-Max Cutting Edge	1	

Weld-On Cutting Edge for 1.3-m³ (1.75 cu. yd.) x 2400-mm (94.5 in.)-Wide Bucket

Part No.	Part Name	Qty.	Remarks
AT219301	Dura-Max Cutting Edge	1	

324H / 344H

Weld-On Cutting Edge for 1.5-m³ (2.0 cu. yd.) x 2400-mm (94.5 in.)-Wide Bucket

Part No.	Part Name	Qty.	Remarks
AT219301	Dura-Max Cutting Edge	1	

Side Cutter

Part No.	Part Name	Qty.	Remarks
AT219348	Cutting Edge	1	
AT219349	Cutting Edge	1	

344H

Bolt-On Cutting Edge for 1.5-m³ (2.0 cu. yd.) x 2400-mm (94.5 in.)-Wide Bucket

Part No.	Part Name	Qty.	Remarks
AT250430	Cutting Edge	1	
AT250429	Cutting Edge	2	

Bolt-On Cutting Edge for 1.3-m³ (1.75 cu. yd.) x 2400-mm (94.5 in.)-Wide Bucket

Part No.	Part Name	Qty.	Remarks
AT250430	Cutting Edge	1	
AT250429	Cutting Edge	2	

Weld-On Cutting Edge for 1.3-m³ (1.75 cu. yd.) and 1.5-m³ (2.0 cu. yd.) x 2400-mm (94.5 in.)-Wide Bucket

Part No.	Part Name	Qty.	Remarks
AT219301	Dura-Max Cutting Edge	1	

344G / 344E

Bucket			
Part No.	Part Name	Qty.	Remarks
T152653	Cutting Edge	1	Base Edge
AT123070	Cutting Edge	1	Center
AT123053	Cutting Edge	2	End

Four-wheel-drive loaders

344J

Bucket with Bolt-On Cutting Edge, 1.5 m³ (2.0 cu. yd.)/1.3 m³ (1.75 cu. yd.)

Part No.	Part Name	Qty.	Remarks
AT250430	Cutting Edge	1	Inner
AT250429	Cutting Edge	2	Outer

444D / 444CH / 444C

Bucket

Part No.	Part Name	Qty.	Remarks
T35567	Cutting Edge	1	Bent-Up Base Edge
T64320	Cutting Edge	1	One-Piece Bolt-On
T35372	Cutting Edge	1	Bent-Up Base Edge without Holes
PBT35372	Cutting Edge	1	Bent-Up Base Edge
T145946	Cutting Edge	1	One-Piece Bolt-On
T57501	Cutting Edge	1	Multi-Purpose Dozer Center
T31148	Cutting Edge	2	Multi-Purpose Dozer End
T35361	Cutting Edge	1	Bent-Up Base Edge
T76968	Cutting Edge	2	Center
T35308	Cutting Edge	1	Bent-Up Base Edge
T76971	Cutting Edge	2	Center

444E

Bucket

Part No.	Part Name	Qty.	Remarks
T120639	Cutting Edge	1	Base Edge
AT123054	Cutting Edge	1	Center
AT123053	Cutting Edge	2	End
T101634	Cutting Edge	2	Weld-On Wear Plate
T149466	Cutting Edge	1	Base Edge with Segment Holes
T101255	Cutting Edge	1	Base Edge for Bolt-On Edges or Teeth
T146673	Cutting Edge	2	Center
T146672	Cutting Edge	2	End
T149468	Cutting Edge	7	Segment
T101634	Cutting Edge	2	Weld-On Wear Plate

444G

Bucket

Part No.	Part Name	Qty.	Remarks
T152510	Cutting Edge	1	Base Edge
AT123054	Cutting Edge	1	Center
AT123053	Cutting Edge	2	End
T120614	Cutting Edge	2	Weld-On Wear Plate

444H

Bucket

Part No.	Part Name	Qty.	Remarks
T156603	Cutting Edge	1	Base Edge with Segment Holes
T156637	Cutting Edge	2	Center
T146672	Cutting Edge	2	End
T156635	Cutting Edge	7	Segment
T156599	Cutting Edge	0	Bolt-On Wear Plate
T169127	Cutting Edge	1	Base Edge
T162493	Cutting Edge	2	Center
T156599	Cutting Edge	2	Bolt-On Wear Plate

444J

Bucket, Loader/Hi-Vis Coupler, 1.9 m³ (2.5 cu. yd.)

Part No.	Part Name	Qty.	Remarks
T157282	Dura-Max Cutting Edge	1	
T169142	Cutting Edge	1	For Use with Jagz
T157306	Cutting Edge	7	For Use with Teeth

Auxiliary Cutting Edge, 2550 mm (100 in.)

Part No.	Part Name	Qty.	Remarks
T157311	Cutting Edge	2	Center (Auxiliary)
T146672	Cutting Edge	2	End (Auxiliary)

444K / 524K

Bucket, Pin-On, 1.9 m³ (2.5 cu. yd.)/Standard Coupler, 1.5 m³ (2.0 cu. yd.) and 1.9 m³ (2.5 cu. yd.)/Hi-Vis Coupler, 1.5 m³ (2.0 cu. yd.)

Part No.	Part Name	Qty.	Remarks
T157282	Dura-Max Cutting Edge	1	

444K / 524K / 544K

Auxiliary Cutting Edge, 2550 mm (100 in.)

Part No.	Part Name	Qty.	Remarks
T157311	Cutting Edge	2	Center (Auxiliary)
T146672	Cutting Edge	2	End (Auxiliary)

Bucket Teeth, 2550-mm (100 in.) Cutting Edge

Part No.	Part Name	Qty.	Remarks
T157306	Cutting Edge	7	

Bucket, Hi-Vis Coupler, 1.9 m³ (2.5 cu. yd.)

Part No.	Part Name	Qty.	Remarks
T157282	Dura-Max Cutting Edge	1	

Four-wheel-drive loaders

544B / 544A

Bucket			
Part No.	Part Name	Qty.	Remarks
T35308	Cutting Edge	1	Bent-Up Base Edge
T76971	Cutting Edge	2	Center
T35372	Cutting Edge	1	Bent-Up Base Edge without Holes
PBT35372	Cutting Edge	1	Bent-Up Base Edge
T145946	Cutting Edge	1	One-Piece Bolt-On

544B

Bucket			
Part No.	Part Name	Qty.	Remarks
T32742	Cutting Edge	1	Multi-Purpose Dozer Center
T31148	Cutting Edge	2	Multi-Purpose Dozer End

544D / 544C / 544B

Bucket			
Part No.	Part Name	Qty.	Remarks
T35567	Cutting Edge	1	Bent-Up Base Edge
T64320	Cutting Edge	1	One-Piece Bolt-On
T35361	Cutting Edge	1	Bent-Up Base Edge
T76968	Cutting Edge	2	Center

544D / 544C

Bucket			
Part No.	Part Name	Qty.	Remarks
T65841	Cutting Edge	1	Bent-Up Base Edge
T145946	Cutting Edge	1	One-Piece Bolt-On
T65842	Cutting Edge	1	Multi-Purpose Dozer Center
T31148	Cutting Edge	2	Multi-Purpose Dozer End
T65443	Cutting Edge	1	Bent-Up Base Edge
T35372	Cutting Edge	1	Bent-Up Base Edge without Holes
T26809	Cutting Edge	1	Base Edge
PBT65455	Cutting Edge	1	Bent-Up Base Edge
T65455	Cutting Edge	1	Bent-Up Base Edge without Holes
T84184	Cutting Edge	1	One-Piece Bolt-On

544G / 544E

Bucket			
Part No.	Part Name	Qty.	Remarks
T149466	Cutting Edge	1	Base Edge with Segment Holes
T101255	Cutting Edge	1	Base Edge for Bolt-On Edges or Teeth
T146673	Cutting Edge	2	Center
T146672	Cutting Edge	2	End
T149468	Cutting Edge	7	Segment
T101634	Cutting Edge	2	Weld-On Wear Plate

544G

Bucket			
Part No.	Part Name	Qty.	Remarks
T169142	Cutting Edge	1	Base Edge for Bolt-On Edges Only
T147931	Cutting Edge	1	Center
T159917	Cutting Edge	2	End
T101634	Cutting Edge	2	Weld-On Wear Plate

544H

Bucket			
Part No.	Part Name	Qty.	Remarks
T157282	Cutting Edge	1	Base Edge with Segment Holes
T157311	Cutting Edge	2	Center
T146672	Cutting Edge	2	End
T157306	Cutting Edge	7	Segment
T156599	Cutting Edge	2	Bolt-On Wear Plate
T169142	Cutting Edge	1	Base Edge for Bolt-On Edges Only
T147931	Cutting Edge	1	Center
T159917	Cutting Edge	2	End

544J

Auxiliary Cutting Edge, 2550 mm (100 in.), for 2.3-m³ (3.0 cu. yd.) Bucket

Part No.	Part Name	Qty.	Remarks
T157311	Cutting Edge	2	Center (Auxiliary)
T146672	Cutting Edge	2	End (Auxiliary)

Auxiliary Cutting Edge, 2690 mm (106 in.), for 2.3-m³ (3.0 cu. yd.) Bucket

Part No.	Part Name	Qty.	Remarks
T157492	Dura-Max Cutting Edge	2	Center (Auxiliary)
T146672	Cutting Edge	2	End (Auxiliary)

Bucket Teeth

Part No.	Part Name	Qty.	Remarks
T157306	Cutting Edge	7	2550 mm (100 in.) with Teeth
T157493	Cutting Edge	7	2690 mm (106 in.) with Teeth

Jagz

Part No.	Part Name	Qty.	Remarks
T825110C	Cutting Edge	14	2550 mm (100 in.) Center
T825115C	Cutting Edge	1	2550 mm (100 in.) RH
T825116C	Cutting Edge	1	2550 mm (100 in.) LH
T825100C	Cutting Edge	15	2690 mm (106 in.) Center
T825105C	Cutting Edge	1	2690 mm (106 in.) RH
T825106C	Cutting Edge	1	2690 mm (106 in.) LH

Four-wheel-drive loaders

544K

Bucket, Hi-Vis Coupler, 2.1 m³ (2.75 cu. yd.)/Pin-On, 2.1 m³ (2.75 cu. yd.) and 2.3 m³ (3.0 cu. yd.)/Standard Coupler, 1.9 m³ (2.5 cu. yd.) and 2.1 m³ (2.75 cu. yd.)

Part No.	Part Name	Qty.	Remarks
T157282	Dura-Max Cutting Edge	1	

Bucket, Pin-On, 2.3-m³ (3.0 cu. yd.) (Wide)

Part No.	Part Name	Qty.	Remarks
T157465	Cutting Edge	1	

544K / 624K

Auxiliary Cutting Edge, 2690 mm (106 in.)

Part No.	Part Name	Qty.	Remarks
T146672	Cutting Edge	2	Outer
T157492	Dura-Max Cutting Edge	2	Inner

Bucket Teeth, 2690 mm (106 in.) Cutting Edge

Part No.	Part Name	Qty.	Remarks
T157493	Cutting Edge	7	

Bucket, Standard Coupler, 2.3 m³ (3.0 cu. yd.)/Hi-Vis Coupler, 2.3 m³ (3.0 cu. yd.)

Part No.	Part Name	Qty.	Remarks
T157465	Cutting Edge	1	

624E

Bucket

Part No.	Part Name	Qty.	Remarks
T149467	Cutting Edge	1	Base Edge with Segment Holes
T102646	Cutting Edge	1	Base Edge for Bolt-On Edges or Teeth
T102695	Cutting Edge	2	Center
T146672	Cutting Edge	2	End
T149468	Cutting Edge	7	Segment
T101634	Cutting Edge	2	Weld-On Wear Plate

624G

Bucket

Part No.	Part Name	Qty.	Remarks
T129782	Cutting Edge	1	Base Edge
T129787	Cutting Edge	1	Center
T129786	Cutting Edge	2	End
T101634	Cutting Edge	2	Weld-On Wear Plate
T149467	Cutting Edge	1	Base Edge with Segment Holes
T102646	Cutting Edge	1	Base Edge for Bolt-On Edges or Teeth
T102695	Cutting Edge	2	Center
T146672	Cutting Edge	2	End

624G (continued)

Bucket

Part No.	Part Name	Qty.	Remarks
T149468	Cutting Edge	7	Segment
T159674	Cutting Edge	1	Base Edge
T148082	Cutting Edge	1	Center
T159916	Cutting Edge	2	End

624H

Bucket

Part No.	Part Name	Qty.	Remarks
T157465	Cutting Edge	1	Base Edge with Segment Holes
T157492	Cutting Edge	2	Center
T146672	Cutting Edge	2	End
T157493	Cutting Edge	7	Segment
T157457	Cutting Edge	2	Bolt-On Wear Plate
T169128	Cutting Edge	1	Base Edge
T148082	Cutting Edge	1	Center
T159917	Cutting Edge	2	End

624J

Auxiliary Cutting Edge for 2.3-m³ (3.0 cu. yd.)/2.7-m³ (3.5 cu. yd.) Bucket

Part No.	Part Name	Qty.	Remarks
T146672	Cutting Edge	2	End (Auxiliary)
T157492	Dura-Max Cutting Edge	2	Center (Auxiliary)

Bucket Teeth for 2.3-m³ (3.0 cu. yd.)/2.7-m³ (3.5 cu. yd.) Bucket

Part No.	Part Name	Qty.	Remarks
T157493	Cutting Edge	7	

Jagz

Part No.	Part Name	Qty.	Remarks
T825100C	Cutting Edge	15	Center
T825105C	Cutting Edge	1	RH
T825106C	Cutting Edge	1	LH

Bucket, Pin-On, Z-Bar, 2.3 m³ (3.0 cu. yd.)/2.7 m³ (3.5 cu. yd.)

Part No.	Part Name	Qty.	Remarks
T157282	Dura-Max Cutting Edge	1	2550 mm (100 in.)
T169142	Cutting Edge	1	2550 mm (100 in.) with Jagz
T157465	Cutting Edge	1	2690 mm (106 in.)
T169128	Cutting Edge	1	2690 mm (106 in.) with Jagz

624K

Bucket, Pin-On, 2.7 m³ (3.5 cu. yd.)/Standard Coupler, 2.7 m³ (3.5 cu. yd.)/Hi-Vis Coupler, 2.7 m³ (3.5 cu. yd.)

Part No.	Part Name	Qty.	Remarks
T157465	Cutting Edge	1	

Four-wheel-drive loaders

644A

Bucket			
Part No.	Part Name	Qty.	Remarks
T26809	Cutting Edge	1	Base Edge
PBT65455	Cutting Edge	1	Bent-Up Base Edge
T65455	Cutting Edge	0	Bent-Up Base Edge without Holes
T84184	Cutting Edge	1	One-Piece Bolt-On

644B / 644A

Bucket			
Part No.	Part Name	Qty.	Remarks
T35327	Cutting Edge	1	Bent-Up Base Edge
T76976	Cutting Edge	1	Center
T76975	Cutting Edge	2	End
PBT35374	Cutting Edge	1	Bent-Up Base Edge
T35374	Cutting Edge	1	Bent-Up Base Edge without Holes

644B

Bucket			
Part No.	Part Name	Qty.	Remarks
T44639	Cutting Edge	1	Multi-Purpose Dozer Center
T31148	Cutting Edge	2	Multi-Purpose Dozer End

644D / 644C

Bucket			
Part No.	Part Name	Qty.	Remarks
T65255	Cutting Edge	1	Bent-Up Base Edge
T76979	Cutting Edge	1	RH Center
T76980	Cutting Edge	1	LH Center
T65268	Cutting Edge	3	Optional Three-Piece Center
T44639	Cutting Edge	1	Multi-Purpose Dozer Center
T31148	Cutting Edge	2	Multi-Purpose Dozer End
PBT65259	Cutting Edge	1	Bent-Up Base Edge
T65259	Cutting Edge	1	Bent-Up Base Edge without Holes
T76975	Cutting Edge	1	Center
T76976	Cutting Edge	2	End

644E

Bucket			
Part No.	Part Name	Qty.	Remarks
T144321	Cutting Edge	1	Base Edge with Segment Holes
T101923	Cutting Edge	1	Base Edge for Bolt-On Edges Only
T101939	Cutting Edge	2	Center
T101940	Cutting Edge	2	End
T144577	Cutting Edge	7	Segment
T101634	Cutting Edge	2	Weld-On Wear Plate
T148684	Cutting Edge	1	Base Edge with Segment Holes
T123976	Cutting Edge	1	Base Edge for Bolt-On Edges Only
T123988	Cutting Edge	2	Center

644G

Bucket			
Part No.	Part Name	Qty.	Remarks
T130080	Cutting Edge	1	Base Edge
T130078	Cutting Edge	1	Center
T130079	Cutting Edge	2	End
T101634	Cutting Edge	2	Weld-On Wear Plate
T148684	Cutting Edge	1	Base Edge with Segment Holes
T123976	Cutting Edge	1	Base Edge for Bolt-On Edges or Teeth
T123988	Cutting Edge	2	Center
T101940	Cutting Edge	2	End
T144577	Cutting Edge	7	Segment
T159635	Cutting Edge	1	Base Edge
T147932	Cutting Edge	1	Center
T159917	Cutting Edge	2	End

644H

Bucket			
Part No.	Part Name	Qty.	Remarks
T167802	Cutting Edge	1	Base Edge with Segment Holes
T167828	Cutting Edge	2	Center
T167829	Cutting Edge	2	End
T209345	Cutting Edge	2	HD Center
T167828HAN	Cutting Edge	3	HA Center (Cast)
T167829HAR	Cutting Edge	1	HA End (Cast)
T167829HAL	Cutting Edge	1	HA End (Cast)
T226229	Cutting Edge	7	Segment
T157457	Cutting Edge	2	Bolt-On Wear Plate
T229777	Cutting Edge	0	Heavy-Duty Wear Plate
T171165	Cutting Edge	1	Base Edge with Segment Holes
T171386	Cutting Edge	2	Center

Four-wheel-drive loaders

644H (continued)

Bucket			
Part No.	Part Name	Qty.	Remarks
T209348	Cutting Edge	2	HD Center
T171386HANC	Cutting Edge	1	HA Center (Cast)
T171386HAN	Cutting Edge	2	HA Intermediate (Cast)
T169129	Cutting Edge	1	Base Edge
T148082	Cutting Edge	1	Center
T147931	Cutting Edge	2	End

644J

Bucket Teeth for 2.7-m³ (3.5 cu. yd.)/3.3-m³ (4.3 cu. yd.)/3.4-m³ (4.5 cu. yd.) Bucket

Part No.	Part Name	Qty.	Remarks
T226229	Dura-Max Cutting Edge	7	

Auxiliary Cutting Edge for 2.7-m³ (3.5 cu. yd.)/3.3 m³ (4.3 cu. yd.)/3.4-m³ (4.5 cu. yd.) Bucket

Part No.	Part Name	Qty.	Remarks
T167829	Cutting Edge	2	End (Auxiliary)
T171386	Cutting Edge	2	Center (Auxiliary)
T209348	Dura-Max Cutting Edge	2	Heavy-Duty Center (Auxiliary)

Jagz

Part No.	Part Name	Qty.	Remarks
T835101C	Cutting Edge	15	Center
T835105C	Cutting Edge	1	RH
T835106C	Cutting Edge	1	LH

Bucket, Pin-On/Hi-Vis Coupler

Part No.	Part Name	Qty.	Remarks
T171165	Dura-Max Cutting Edge	1	

644K

Bucket Teeth

Part No.	Part Name	Qty.	Remarks
T226229	Dura-Max Cutting Edge	7	

Bucket, Pin-On, 3.2 m³ (4.25 cu. yd.)/3.4 m³ (4.5 cu. yd.)

Part No.	Part Name	Qty.	Remarks
T171165	Dura-Max Cutting Edge	1	

644K / 724K

Auxiliary Cutting Edge

Part No.	Part Name	Qty.	Remarks
T167829	Cutting Edge	2	Outer
T209348	Dura-Max Cutting Edge	2	Inner

Bucket, Hi-Vis Coupler, 3.0 m³ (4.0 cu. yd.)

Part No.	Part Name	Qty.	Remarks
T171165	Dura-Max Cutting Edge	1	

724J

Auxiliary Cutting Edge for 3.6-m³ (4.75 cu. yd.) Bucket

Part No.	Part Name	Qty.	Remarks
T167829	Cutting Edge	2	End (Auxiliary)
T171386	Cutting Edge	2	Center (Auxiliary)
T209348	Dura-Max Cutting Edge	2	Heavy-Duty Center (Auxiliary)

Bucket, Loader, 3.6 m³ (4.75 cu. yd.)

Part No.	Part Name	Qty.	Remarks
T171165	Dura-Max Cutting Edge	1	

Bucket Teeth for 3.6-m³ (4.75 cu. yd.)/3.8-m³ (5.0 cu. yd.)/4.6-m³ (6.0 cu. yd.)/5.4-m³ (7.0 cu. yd.) Bucket

Part No.	Part Name	Qty.	Remarks
T226229	Dura-Max Cutting Edge	7	

Bucket, Waste Handler, 3.8 m³ (5.0 cu. yd.)/4.6 m³ (6.0 cu. yd.)/5.4 m³ (7.0 cu. yd.)

Part No.	Part Name	Qty.	Remarks
T167828	Cutting Edge	2	Center
T167829	Cutting Edge	2	End

Jagz, 3.6 m³ (4.75 cu. yd.)

Part No.	Part Name	Qty.	Remarks
T207421	Dura-Max Cutting Edge	1	Base for Jagz
T825101C	Cutting Edge	15	Center
T825105C	Cutting Edge	1	RH
T825106C	Cutting Edge	1	LH

Four-wheel-drive loaders

724K

Jagz Cutting Edge

Part No.	Part Name	Qty.	Remarks
T825101C	Cutting Edge	15	Center
T825105C	Cutting Edge	1	RH
T825106C	Cutting Edge	1	LH

Bucket Teeth

Part No.	Part Name	Qty.	Remarks
T226229	Dura-Max Cutting Edge	7	

Bucket, Pin-On, 3.6 m³ (4.75 cu. yd.)

Part No.	Part Name	Qty.	Remarks
T171165	Dura-Max Cutting Edge	1	

Bucket, Pin-On, with Jagz Cutting Edge, 3.6 m³ (4.75 cu. yd.)

Part No.	Part Name	Qty.	Remarks
T207421	Dura-Max Cutting Edge	1	

744E

Part No.	Part Name	Qty.	Remarks
T156031	Cutting Edge	1	Base Edge with Segment Holes
AT139630	Cutting Edge	1	Base Edge for Bolt-On Edges or Teeth
AT139623	Cutting Edge	2	Center
AT139622	Cutting Edge	2	End
D31088L	Cutting Edge	1	LH Half Arrow Center (Fabricated)
D31089R	Cutting Edge	1	RH Half Arrow Center (Fabricated)
T144578	Cutting Edge	7	Segment
AT139621	Cutting Edge	2	Bolt-On Wear Plate

744H

Part No.	Part Name	Qty.	Remarks
T156031	Cutting Edge	1	Base Edge with Segment Holes
AT139630	Cutting Edge	1	Base Edge for Bolt-On Edges or Teeth
T167922	Cutting Edge	2	Center
AT139622	Cutting Edge	2	End
T209347	Cutting Edge	2	HD Center
T167922HAN	Cutting Edge	3	Half Arrow Center (Cast)
AT139622HAL	Cutting Edge	1	LH HA End (Cast)
AT139622HAR	Cutting Edge	1	RH HA End (Cast)
T156106	Cutting Edge	7	Segment
T156079	Cutting Edge	2	Bolt-On Wear Plate

744H (continued)

Part No.	Part Name	Qty.	Remarks
T169126	Cutting Edge	1	Base Edge
T161117	Cutting Edge	1	Center
T161116	Cutting Edge	2	End
T156262	Cutting Edge	1	Base Edge with Segment Holes
T156530	Cutting Edge	2	Center
T209349	Cutting Edge	2	HD Center
T156530HANC	Cutting Edge	1	Half Arrow Center (Cast)
T156530HANL	Cutting Edge	1	LH Half Arrow Center (Cast)
T156530HANR	Cutting Edge	1	RH Half Arrow Center (Cast)
T156132	Cutting Edge	7	Segment

744J

Bucket, Loader, 3.4 m³ (4.5 cu. yd.)/4.0 m³ (5.25 cu. yd.)/4.4 m³ (5.75 cu. yd.)

Part No.	Part Name	Qty.	Remarks
T156031	Cutting Edge	1	3.4-m ³ (4.5 cu. yd.) or 4.0-m ³ (5.25 cu. yd.) Center
T156262	Cutting Edge	1	4.4-m ³ (5.75 cu. yd.) Center
T180998	Cutting Edge	2	End

Jagz, 4.0 m³ (5.25 cu. yd.)

Part No.	Part Name	Qty.	Remarks
T169126	Cutting Edge	1	Base for Jagz
T835000C	Cutting Edge	18	Center
T835007C	Cutting Edge	1	LH
T835008C	Cutting Edge	1	RH
T835100C	Cutting Edge	17	Center
T835107C	Cutting Edge	1	LH
T835108C	Cutting Edge	1	RH

Bucket, Waste Handler

Part No.	Part Name	Qty.	Remarks
T57933	Dura-Max Cutting Edge	4	

Bucket Teeth for 3.4-m³ (4.5 cu. yd.)/4.0-m³ (5.25 cu. yd.) Bucket

Part No.	Part Name	Qty.	Remarks
T156106	Cutting Edge	7	Serial No. < 612720

Bucket Teeth for 4.4-m³ (5.75 cu. yd.) Bucket

Part No.	Part Name	Qty.	Remarks
T156132	Cutting Edge	7	Serial No. > 612720

Four-wheel-drive loaders

744J (continued)

Auxiliary Cutting Edge for 3.4-m³ (4.5 cu. yd.)/4.0-m³ (5.25 cu. yd.)/4.4-m³ (5.75 cu. yd.) Bucket

Part No.	Part Name	Qty.	Remarks
AT139622	Dura-Max Cutting Edge	2	End (Auxiliary)
T167922	Cutting Edge	2	Center, Serial No. < 612699
T156530	Cutting Edge	2	Center, Serial No. > 612700
T209347	Dura-Max Cutting Edge	2	Center, Serial No. < 612699
T209349	Dura-Max Cutting Edge	2	Center, Serial No. > 612700

744K

Bucket, Pin-On, 4.0 m³ (5.25 cu. yd.)/4.4 m³ (5.75 cu. yd.)

Part No.	Part Name	Qty.	Remarks
T156262	Cutting Edge	1	Inner
T180998	Cutting Edge	2	Sides

744K / 824K

Auxiliary Cutting Edge

Part No.	Part Name	Qty.	Remarks
AT139622	Dura-Max Cutting Edge	2	
T209349	Dura-Max Cutting Edge	2	

Bucket Teeth

Part No.	Part Name	Qty.	Remarks
T156132	Cutting Edge	7	

Jagz Cutting Edge

Part No.	Part Name	Qty.	Remarks
T835000C	Cutting Edge	18	Center
T835007C	Cutting Edge	1	RH
T835008C	Cutting Edge	1	LH

824J

Auxiliary Cutting Edge for 4.6-m³ (6.0 cu. yd.)/5.2-m³ (6.75 cu. yd.) Bucket

Part No.	Part Name	Qty.	Remarks
AT139622	Dura-Max Cutting Edge	2	End (Auxiliary)
T156530	Cutting Edge	2	Center (Auxiliary)
T209349	Dura-Max Cutting Edge	2	Heavy-Duty Center (Auxiliary)

Bucket, Loader, 4.6 m³ (6.0 cu. yd.)/5.2 m³ (6.75 cu. yd.)

Part No.	Part Name	Qty.	Remarks
T156262	Cutting Edge	1	

Bucket Teeth for 4.6-m³ (6.0 cu. yd.)/5.2-m³ (6.75 cu. yd.) Bucket

Part No.	Part Name	Qty.	Remarks
T156132	Cutting Edge	7	

824J (continued)

Jagz

Part No.	Part Name	Qty.	Remarks
T835000C	Cutting Edge	18	Center
T835007C	Cutting Edge	1	LH
T835008C	Cutting Edge	1	RH

824K

Bucket, Pin-On, 4.6 m³ (6.0 cu. yd.)/5.2 m³ (6.75 cu. yd.)

Part No.	Part Name	Qty.	Remarks
T156262	Cutting Edge	1	Center
T180998	Cutting Edge	2	Sides

844J

Bucket, Loader, 5.5 m³ (7.25 cu. yd.)/5.9 m³ (7.75 cu. yd.)

Part No.	Part Name	Qty.	Remarks
T196210	Cutting Edge	1	Weld-On
T227014	Cutting Edge	2	End Bit

Bucket, Bolt-On, with Auxiliary Cutting Edge, 5.5 m³ (7.25 cu. yd.)/5.9 m³ (7.75 cu. yd.)

Part No.	Part Name	Qty.	Remarks
T196455	Dura-Max Cutting Edge	2	End (Auxiliary)
T198126	Dura-Max Cutting Edge	3	Center (Auxiliary)
T210715	Dura-Max Cutting Edge	2	Sides

Bucket Teeth

Part No.	Part Name	Qty.	Remarks
T196607	Dura-Max Cutting Edge	7	

Jagz

Part No.	Part Name	Qty.	Remarks
T209201C	Cutting Edge	18	Center
T209202C	Cutting Edge	1	LH
T209203C	Cutting Edge	1	RH

Bucket, Rock

Part No.	Part Name	Qty.	Remarks
T211766	Dura-Max Cutting Edge	1	
T211887	Dura-Max Cutting Edge	1	Dura-Max Center
T1167460	Cutting Edge	1	Center
T211888	Dura-Max Cutting Edge	3	Dura-Max RH
T1167461	Cutting Edge	3	RH
T211889	Dura-Max Cutting Edge	3	Dura-Max LH
T1167462	Cutting Edge	3	LH

Four-wheel-drive loaders

844J (continued)

Bucket, Rock, with Bolt-On Cutting Edge, 4.6 m³ (6.0 cu. yd.)

Part No.	Part Name	Qty.	Remarks
T230663	Dura-Max Cutting Edge	1	Bolt-On Cutting Edge
T230659	Dura-Max Cutting Edge	1	Center
T230660	Dura-Max Cutting Edge	1	Outer Left
T230661	Dura-Max Cutting Edge	1	Inner Left
T230665	Dura-Max Cutting Edge	1	Outer Right
T230666	Dura-Max Cutting Edge	1	Inner Right

844

Part No.	Part Name	Qty.	Remarks
T57442	Cutting Edge	1	Base Edge
T57407	Cutting Edge	1	Base Edge
T57933	Cutting Edge	4	Center
T57432	Cutting Edge	1	Base Edge
T78994	Cutting Edge	1	Base Edge
T101647	Cutting Edge	2	Center
T101648	Cutting Edge	2	End
T57422	Cutting Edge	1	Base Edge

844K

Auxiliary Cutting Edge, 3459 mm (136 in.)

Part No.	Part Name	Qty.	Remarks
T196455	Dura-Max Cutting Edge	2	Outer
T198126	Dura-Max Cutting Edge	3	Inner
T210715	Dura-Max Cutting Edge	2	Sides

Jagz Cutting Edge

Part No.	Part Name	Qty.	Remarks
T209201C	Cutting Edge	18	Center
T209202C	Cutting Edge	1	LH
T209203C	Cutting Edge	1	RH
T210715	Dura-Max Cutting Edge	2	Sides

844K (continued)

Bucket Teeth

Part No.	Part Name	Qty.	Remarks
T196607	Dura-Max Cutting Edge	7	
T210715	Dura-Max Cutting Edge	2	Sides

Bucket, Rock, 4.6 m³ (6.0 cu. yd.)

Part No.	Part Name	Qty.	Remarks
T211766	Dura-Max Cutting Edge	1	
T198121	Dura-Max Cutting Edge	2	
T210715	Dura-Max Cutting Edge	2	
T211888	Dura-Max Cutting Edge	3	
T211887	Dura-Max Cutting Edge	1	
T211889	Dura-Max Cutting Edge	3	

Bucket, Rock, with Bolt-On Cutting Edge, 4.6 m³ (6.0 cu. yd.)

Part No.	Part Name	Qty.	Remarks
T230663	Dura-Max Cutting Edge	1	
T198121	Dura-Max Cutting Edge	2	
T210715	Dura-Max Cutting Edge	2	
T230659	Dura-Max Cutting Edge	1	
T230660	Dura-Max Cutting Edge	1	
T230661	Dura-Max Cutting Edge	1	
T230665	Dura-Max Cutting Edge	1	
T230666	Dura-Max Cutting Edge	1	

Bucket, 5.5 m³ (7.25 cu. yd.)

Part No.	Part Name	Qty.	Remarks
T196210	Cutting Edge	1	
T227014	End Bit	2	Sides

Bucket, 5.9 m³ (7.75 cu. yd.)

Part No.	Part Name	Qty.	Remarks
T196210	Cutting Edge	1	
T227014	End Bit	2	Sides

Four-wheel-drive loaders

TC44 H

Part No.	Part Name	Qty.	Remarks
T156603	Cutting Edge	1	Base Edge with Segment Holes
T156637	Cutting Edge	2	Center
T146672	Cutting Edge	2	End
T156635	Cutting Edge	7	Segment
T156599	Cutting Edge	2	Bolt-On Wear Plate
T169127	Cutting Edge	1	Base Edge
T162493	Cutting Edge	2	Center

TC54 H

Part No.	Part Name	Qty.	Remarks
T157282	Cutting Edge	1	Base Edge with Segment Holes
T157311	Cutting Edge	2	Center
T146672	Cutting Edge	2	End
T157306	Cutting Edge	7	Segment
T156599	Cutting Edge	2	Bolt-On Wear Plate
T169142	Cutting Edge	1	Base Edge for Bolt-On Edges Only
T147931	Cutting Edge	1	Center
T159917	Cutting Edge	2	End

TC62 J / TC62 H

Part No.	Part Name	Qty.	Remarks
T157465	Cutting Edge	1	Base Edge with Segment Holes
T157492	Cutting Edge	2	Center
T146672	Cutting Edge	2	End
T157493	Cutting Edge	7	Segment
T157457	Cutting Edge	2	Bolt-On Wear Plate
T169128	Cutting Edge	1	Base Edge
T148082	Cutting Edge	1	Center
T159917	Cutting Edge	2	End

Scraper pans

760 / 762

What Goes Here			
Part No.	Part Name	Qty.	Remarks
U15809	Cutting Edge	1	Center
U15808	Cutting Edge	2	End
U15809HT	Cutting Edge	1	Center
U15808HT	Cutting Edge	2	End
T107607	Cutting Edge	1	Heavy-Duty Center
T107606	Cutting Edge	2	HD End
U16420	Cutting Edge	1	RH Router Bit
U16421	Cutting Edge	1	LH Router Bit
U17518	Cutting Edge	1	Extended RH Router Bit
U17519	Cutting Edge	1	Extended LH Router Bit
762BS	Cutting Edge	1	Straight Blade Support

860 / 862

What Goes Here			
Part No.	Part Name	Qty.	Remarks
T145455	Cutting Edge	1	Center
T145456	Cutting Edge	2	End
T145457	Cutting Edge	1	Heavy-Duty Center
T145458	Cutting Edge	2	HD End
T114519	Cutting Edge	1	RH Router Bit
T114520	Cutting Edge	1	LH Router Bit
860FROG	Cutting Edge	1	Straight Blade Support

1412 E

Ejector Scraper Pans

Part No.	Part Name	Qty.	Remarks
CAM CB01428503	Cutting Edge	8	Center
CAM CB01428505	Cutting Edge	12	Optional Center
CAM CB01440140	Cutting Edge	2	Router Bit
CAM CB01440140L	Cutting Edge	2	Light-Duty Router Bit

1512E / 2112E

Ejector Scraper Pans

Part No.	Part Name	Qty.	Remarks
CB11481432	Blade Kit	1	Blade Support with Gussets

1810E

Ejector Scraper Pans

Part No.	Part Name	Qty.	Remarks
CB11481430	Blade Kit	1	Blade Support with Gussets

Scraper pans

1512E / 1810E / 2112E

Ejector Scraper Pans

Part No.	Part Name	Qty.	Remarks
CB01428503	Cutting Edge	8	Standard 457 mm x 406 mm (18 in. x 16 in.)
CB01428505	Cutting Edge	1	Optional 305 mm x 406 mm (12 in. x 16 in.)
CB01447446	Cutting Edge	1	Optional 152 mm x 406 mm (6 in. x 16 in.)
CB01440276	Cutting Edge	1	Optional 457 mm x 508 mm (18 in. x 20 in.)
CB01440281	Cutting Edge	1	Optional 305 mm x 508 mm (12 in. x 20 in.)
CB01440650	Cutting Edge	1	Optional 152 mm x 508 mm (6 in. x 20 in.)

1814E

Ejector Scraper Pans

Part No.	Part Name	Qty.	Remarks
CB11481433	Blade Kit	1	Blade Support with Gussets
CB01428503	Cutting Edge	7	Standard 457 mm x 406 mm (18 in. x 16 in.)
CB01428505	Cutting Edge	4	Optional 305 mm x 406 mm (12 in. x 16 in.)
CB01447446	Cutting Edge	1	Optional 152 mm x 406 mm (6 in. x 16 in.)
CB01440276	Cutting Edge	1	Optional 457 mm x 508 mm (18 in. x 20 in.)
CB01440281	Cutting Edge	1	Optional 305 mm x 508 mm (12 in. x 20 in.)
CB01440650	Cutting Edge	1	Optional 152 mm x 508 mm (6 in. x 20 in.)

1312 C

Carry-All Scraper Pans

Part No.	Part Name	Qty.	Remarks
CAM 0241364699	Cutting Edge	1	Center
CAM 0241395873	Cutting Edge	1	Heavy-Duty Wider Center
CAM 0241364716	Cutting Edge	2	End
CAM CB01440140	Cutting Edge	2	Router Bit
CAM CB01440140L	Cutting Edge	2	Light-Duty Router Bit
CAM CB01440376	Cutting Edge	1	Center
CAM CB01440377	Cutting Edge	1	Heavy-Duty Wider Center
CAM CB01440368	Cutting Edge	2	End

1510C / 1810C

Carry-All Scraper Pans

Part No.	Part Name	Qty.	Remarks
CB01472052	Cutting Edge	2	End
CB01440276	Cutting Edge	2	Center; Use with CB01440281
CB01440281	Cutting Edge	1	Center; Use with CB01440276
CB01472054	Cutting Edge	1	Center
CB01440650	Cutting Edge	6	Use with CB01428505
CB01428505	Cutting Edge	7	Use with CB01440650

1512C / 1812C

Carry-All Scraper Pans

Part No.	Part Name	Qty.	Remarks
CB01472052	Cutting Edge	2	End
CB01472055	Cutting Edge	1	Center
CB01440276	Cutting Edge	4	Center
CB01428505	Cutting Edge	8	Use with CB01440650
CB01440650	Cutting Edge	8	Use with CB01428505

1814C

Carry-All Scraper Pans

Part No.	Part Name	Qty.	Remarks
CB01472052	Cutting Edge	2	End
CB01472054	Cutting Edge	2	Center
CB01428505	Cutting Edge	8	Use with CB01440276
CB01440276	Cutting Edge	4	Use with CB01428505
CB01440650	Cutting Edge	8	Use with CB01428505
CB01428505	Cutting Edge	10	Use with CB01440650

2112C

Carry-All Scraper Pans

Part No.	Part Name	Qty.	Remarks
CB01472052	Cutting Edge	5	End
CB01472055	Cutting Edge	1	Center
CB01440276	Cutting Edge	4	Center
CB01428505	Cutting Edge	8	Use with CB01440650
CB01440650	Cutting Edge	8	Use with CB01428505

Skid steers

240 / 250 / 260 / 270 / 280 / 317 / 320 / 325 / 328 / 332

Part No.	Part Name	Qty.	Remarks
KV12945	Cutting Edge	1	Base Edge
KV12470	Cutting Edge	1	One-Piece Bolt-On
KV12946	Cutting Edge	1	Base Edge without Holes
KV12947	Cutting Edge	1	Base Edge
KV17819	Cutting Edge	1	One-Piece Bolt-On
KV12948	Cutting Edge	1	Base Edge without Holes
U16748	Cutting Edge	1	One-Piece Bolt-On
KV10297	Cutting Edge	1	Base Edge Without Holes
KV15522	Cutting Edge	1	Base Edge
KV15527	Cutting Edge	1	Multi-Purpose Clam Edge
KV15516	Cutting Edge	1	Multi-Purpose Dozer Center
KV12951	Cutting Edge	1	Base Edge
T32742	Cutting Edge	1	One-Piece Bolt-On
KV12952	Cutting Edge	1	Base Edge without Holes
KV15523	Cutting Edge	1	Base Edge
KV15528	Cutting Edge	1	Multi-Purpose Clam Edge

240 / 250 / 260 / 270 / 280 / 317 / 320 / 325 / 328 / 332

(continued)

Part No.	Part Name	Qty.	Remarks
KV15517	Cutting Edge	1	Multi-Purpose Dozer Center
T222985	Cutting Edge	1	Base Edge
T223081	Cutting Edge	1	One-Piece Bolt-On
T223037	Cutting Edge	1	Base Edge without Holes
KV12953	Cutting Edge	1	Base Edge
KV12758	Cutting Edge	1	One-Piece Bolt-On
KV14396	Cutting Edge	1	Base Edge without Holes
KV19428	Cutting Edge	1	Base Edge
KV19429	Cutting Edge	1	Multi-Purpose Clam Edge
KV12954	Cutting Edge	1	Base Edge
KV12471	Cutting Edge	1	One-Piece Bolt-On
KV12955	Cutting Edge	1	Base Edge without Holes
KV22160	Cutting Edge	1	Base Edge
KV22161	Cutting Edge	1	Multi-Purpose Clam Edge

Skid steers and compact track loaders

Bolt-On Cutting Edge

Part No.	Part Name	Qty.	Remarks
KV12470	Cutting Edge	1	1422 mm (54 in.)
KV17819	Cutting Edge	1	1524 mm (60 in.)
U16748	Cutting Edge	1	1676 mm (66 in.)
T32742	Cutting Edge	1	1829 mm (72 in.)
T223081	Cutting Edge	1	1930 mm (76 in.)
KV12758	Cutting Edge	1	1981 mm (78 in.)
KV12471	Cutting Edge	1	2134 mm (84 in.)

Buckets, Dirt, with Bolt-On Cutting Edge

Part No.	Part Name	Qty.	Remarks
T211664	Cutting Edge	1	1676 mm (66 in.) Weld-On
U16748	Cutting Edge	1	1676 mm (66 in.)
T225364	Cutting Edge	1	1524 mm (60 in.)
T225190	Cutting Edge	1	1422 mm (56 in.)

Dozer Blade Cutting Edge (DB884)

Part No.	Part Name	Qty.	Remarks
T227221	Cutting Edge	1	

Dozer Blade Cutting Edge (DB96)

Part No.	Part Name	Qty.	Remarks
T227240	Cutting Edge	1	

Landplane (LP72)

Part No.	Part Name	Qty.	Remarks
T32742	Cutting Edge	2	

Landplane (LP78)

Part No.	Part Name	Qty.	Remarks
KV12758	Cutting Edge	2	

Landplane (LP84)

Part No.	Part Name	Qty.	Remarks
KV12471	Cutting Edge	2	

Buckets, Construction and Dirt, with Weld-On Cutting Edges

Part No.	Part Name	Qty.	Remarks
KV12945	Cutting Edge	1	1372 mm (54 in.)
KV12947	Cutting Edge	1	1524 mm (60 in.)
T211664	Cutting Edge	1	1676 mm (66 in.)
KV12951	Cutting Edge	1	1829 mm (72 in.)
KV12953	Cutting Edge	1	1981 mm (78 in.)
KV12954	Cutting Edge	1	2134 mm (84 in.)

Buckets, Foundry, with Weld-On Cutting Edges

Part No.	Part Name	Qty.	Remarks
KV12947	Cutting Edge	1	1524 mm (60 in.)
T211664	Cutting Edge	1	1676 mm (66 in.)
KV12951	Cutting Edge	1	1829 mm (72 in.)

Buckets, Light-Material, with Weld-On Cutting Edges

Part No.	Part Name	Qty.	Remarks
KV12948	Cutting Edge	1	1524 mm (60 in.)
KV12952	Cutting Edge	1	1829 mm (72 in.)
KV12955	Cutting Edge	1	2134 mm (84 in.)

Buckets, Manure/Slurry, with Weld-On Cutting Edges

Part No.	Part Name	Qty.	Remarks
KV12945	Cutting Edge	1	1372 mm (54 in.)
KV12947	Cutting Edge	1	1524 mm (60 in.)
T211664	Cutting Edge	1	1676 mm (66 in.)
KV12951	Cutting Edge	1	1829 mm (72 in.)
KV12954	Cutting Edge	1	2134 mm (84 in.)

Compact excavators

17D

Bucket, Heavy-Duty, 229 mm (9 in.)

Part No.	Part Name	Qty.	Remarks
T212553	Cutting Edge	1	

Bucket, Heavy-Duty, 406 mm (16 in.)

Part No.	Part Name	Qty.	Remarks
T212564	Cutting Edge	1	

17D / 35D

Bucket, Heavy-Duty, 305 mm (12 in.)

Part No.	Part Name	Qty.	Remarks
T212561	Cutting Edge	1	

17D / 27D / 35D

Bucket, Heavy-Duty, 457 mm (18 in.)

Part No.	Part Name	Qty.	Remarks
T212567	Cutting Edge	1	

27D / 27C

Bucket, Ditch-Cleaning, 762 mm (30 in.)

Part No.	Part Name	Qty.	Remarks
T212581	Cutting Edge	1	

27D / 35D / 27C / 35C

Bucket, Heavy-Duty, 610 mm (24 in.)

Part No.	Part Name	Qty.	Remarks
T212580	Cutting Edge	1	

35D / 35C

Blade with Bolt-On Cutting Edge

Part No.	Part Name	Qty.	Remarks
3102274	Cutting Edge	1	Center
3102269	Cutting Edge	2	End

Bucket, Heavy-Duty, 762 mm (30 in.)

Part No.	Part Name	Qty.	Remarks
T212581	Cutting Edge	1	

Bucket, Ditch-Cleaning, 864 mm (34 in.)

Part No.	Part Name	Qty.	Remarks
T212582	Cutting Edge	1	

50D / 60D / 50C

Bucket, Heavy-Duty, 305 mm (12 in.)/0.06 m³ (2.1 cu. ft.)

Part No.	Part Name	Qty.	Remarks
T212584	Dura-Max Cutting Edge	1	

Bucket, Heavy-Duty, 457 mm (18 in.)/0.10 m³ (3.6 cu. ft.)

Part No.	Part Name	Qty.	Remarks
T212592	Dura-Max Cutting Edge	1	

Bucket, Heavy-Duty, 610 mm (24 in.)/0.15 m³ (5.2 cu. ft.)

Part No.	Part Name	Qty.	Remarks
T212595	Dura-Max Cutting Edge	1	

Bucket, Heavy-Duty, 762 mm (30 in.)/0.19 m³ (6.8 cu. ft.)

Part No.	Part Name	Qty.	Remarks
T212598	Dura-Max Cutting Edge	1	

Bucket, Ditch-Cleaning, 914 mm (36 in.)/0.24 m³ (8.3 cu. ft.)

Part No.	Part Name	Qty.	Remarks
T212601	Dura-Max Cutting Edge	1	

60D

Bucket, Heavy-Duty, 457 mm (18 in.)/0.14 m³ (5.1 cu. ft.)

Part No.	Part Name	Qty.	Remarks
T161279	Dura-Max Cutting Edge	1	

Bucket, Heavy-Duty, 610 mm (24 in.)/0.21 m³ (7.5 cu. ft.)

Part No.	Part Name	Qty.	Remarks
T161279	Dura-Max Cutting Edge	1	

Bucket, Heavy-Duty, 762 mm (30 in.)/0.28 m³ (10.0 cu. ft.)

Part No.	Part Name	Qty.	Remarks
T161319	Dura-Max Cutting Edge	1	

Bucket, Heavy-Duty, 914 mm (36 in.)/0.35 m³ (12.5 cu. ft.)

Part No.	Part Name	Qty.	Remarks
T161319	Dura-Max Cutting Edge	1	

All makes

Case Backhoe Loader Buckets

480 / 480LL / 580 / 580B / 580C / 580D / 580E

Part No.	Description	Qty.
TZPC21601	Base (10 PB750300 Bolts/Nuts)	1
TZPC21612	Base (10 PB750300 Bolts/Nuts)	1
TZPC215381	Auxiliary (10 PB750300 Bolts/Nuts)	1

580K / 580 Super K – 2082.8 mm (82 in.)

Part No.	Description	Qty.
TZPC215381	Auxiliary (10 PB750300 Bolts/Nuts)	1

590 Turbo – 2286 mm (90 in.)

Part No.	Description	Qty.
TD147323A1	Auxiliary	1

580 Super L – 2108.2 mm (83 in.)

Part No.	Description	Qty.
T112946A1	Auxiliary	1

590 Super L – 2387.6 mm (94 in.)

Part No.	Description	Qty.
T185506A1	Auxiliary	1

Caterpillar® Dozers

D3 / D3B / D3C / 3P / 85U / 6EH

Part No.	Description	Qty.
T4T6230	Center (6 PB625200 Bolts/Nuts)	2
T4T6229	End Bit (3 PB625200 Bolts/Nuts)	2

D4 / D4E / 4S / 67E / 27F / 9YG

Part No.	Description	Qty.
T4T3027	Center (3 PB625250 Bolts/Nuts)	1
T4T3028	Center End (4 PB625200 Bolts/Nuts)	2
T4T3051	End Bit Right (6 PB625200 Bolts/Nuts)	1
T4T3052	End Bit Left (6 PB625200 Bolts/Nuts)	1

D5H / 5A / 2FH / 2TH

Part No.	Description	Qty.
T4T3013	Center (7 PB750250 Bolts/Nuts)	1
T1U2207	Center End (6 PB750250 Bolts/Nuts)	2
T3G4285	End Bit (4 PB750250 Bolts/Nuts)	2

D6 / LGP / 6S / 21H / 41H

Part No.	Description	Qty.
T4T3011	Center (11 PB750250 Bolts/Nuts)	1
T4T3010	Center End (4 PB750250 Bolts/Nuts)	2
T4T3045	End Bit Right (6 PB750250 Bolts/Nuts)	1
T4T3046	End Bit Left (6 PB750250 Bolts/Nuts)	1
T3G8319	End Bit Right (6 PB750250 Bolts/Nuts)	1
T3G8320	End Bit Left (6 PB750250 Bolts/Nuts)	1

D7 / 7S / Series F 60K / Series G 53J / 49K / 64K

Part No.	Description	Qty.
T4T2993	Center (7 PB875300 Bolts/Nuts)	1
T4T2992	Center End (5 PB875300 Bolts/Nuts)	2
T3G8315	End Bit Right (7 PB875300 Bolts/Nuts)	1
T3G8316	End Bit Left (7 PB875300 Bolts/Nuts)	1

Caterpillar Loaders

910 – 2161.54 mm (85.1 in.)

Part No.	Description	Qty.
T4T2913	Center Auxiliary (3 PB750225 Bolts/Nuts)	1
T4T2914	End Auxiliary (2 PB750225 Bolts/Nuts)	2

916 – 2377.44 mm (93.6 in.)

Part No.	Description	Qty.
T1U0295	Center Auxiliary (3 PB100275 Bolts/Nuts)	2
T4T8091	End (2 PB100275 Bolts/Nuts)	2
T1U1896	End (2 PB100275 Bolts/Nuts)	2
T4T6694	Segments (2 PB100275 Bolts/Nuts)	7

916 / 926 – 2395.22 mm (94.3 in.)

Part No.	Description	Qty.
T1U0295	Center Auxiliary (3 PB100275 Bolts/Nuts)	2
T4T8091	End (2 PB100275 Bolts/Nuts)	2
T1U1896	Optional End (2 PB100275 Bolts/Nuts)	2

920 / 930 / 950 – 2438.4 mm (96 in.)

Part No.	Description	Qty.
T1U1465	Center Auxiliary (3 PB100275 Bolts/Nuts)	1
T1U1464	End (3 PB100275 Bolts/Nuts)	2

920 / 930 – 2420.62 mm (95.3 in.)

Part No.	Description	Qty.
T1U0607	Center Auxiliary (3 PB100275 Bolts/Nuts)	2
T4T8091	End (2 PB100275 Bolts/Nuts)	2
T1U1896	Optional End (2 PB100275 Bolts/Nuts)	2

926 – 2377.44 mm (93.6 in.)

Part No.	Description	Qty.
T1U0295	Center Auxiliary (3 PB100275 Bolts/Nuts)	2
T4T8091	End (2 PB100275 Bolts/Nuts)	2
T1U1896	Optional End (2 PB100275 Bolts/Nuts)	2

936E / 936F – 2646.68 mm (104.2 in.)

Part No.	Description	Qty.
T1U0292	Center Auxiliary (3 PB100275 Bolts/Nuts)	2
T4T8091	End (2 PB100275 Bolts/Nuts)	2
T1U1896	Optional End (2 PB100275 Bolts/Nuts)	2

950 – 2687.32 mm (105.8 in.)

Part No.	Description	Qty.
T1U1470	Center Auxiliary (4 PB750225 Bolts/Nuts)	1
T1U1469	End (3 PB750225 Bolts/Nuts)	2

950 – 2418.08 mm (95.2 in.)

Part No.	Description	Qty.
T1U2414	Center Auxiliary (3 PB100300 Bolts/Nuts)	2
T4T8101	End (3 PB100300 Bolts/Nuts)	2
T1U1898	Optional End (3 PB100300 Bolts/Nuts)	2

950 – 2623.82 mm (103.3 in.)

Part No.	Description	Qty.
T1U2412	Center Auxiliary (3 PB100300 Bolts/Nuts)	2
T4T8101	End (3 PB100300 Bolts/Nuts)	2
T1U1898	Optional End (3 PB100300 Bolts/Nuts)	2

All makes

Caterpillar Loaders (continued)

950MP – 2687.32 mm (105.8 in.)

Part No.	Description	Qty.
T1U1470	Center Auxiliary (4 PB750225 Bolts/Nuts)	1
T1U1469	End (3 PB750225 Bolts/Nuts)	2

950 – 2649.22 mm (104.3 in.)

Part No.	Description	Qty.
T1U2413	Center Auxiliary (3 PB100300 Bolts/Nuts)	2
T4T8101	End (3 PB100300 Bolts/Nuts)	2
T1U1898	Optional End (3 PB100300 Bolts/Nuts)	2

950B / 950E / 950F

Part No.	Description	Qty.
T1U0601	Center Auxiliary (3 PB100300 Bolts/Nuts)	2
T4T8101	End (3 PB100300 Bolts/Nuts)	2
T1U1898	Optional End (3 PB100300 Bolts/Nuts)	2
T4T6695	Segments (2 PB100275 Bolts/Nuts)	7

966C – 2921 mm (115 in.)

Part No.	Description	Qty.
T1U1476	Center Auxiliary (8 PB100300 Bolts/Nuts)	1
T1U1475	End Auxiliary (4 PB100300 Bolts/Nuts)	2

966C – 2865.12 mm (112.8 in.)

Part No.	Description	Qty.
T1U2406	Center Auxiliary (3 PB125400 Bolts/Nuts)	2
T3G6395	End (3 PB125400 Bolts/Nuts)	2
T1U1897	Optional End (3 PB125400 Bolts/Nuts)	2

966C – 2847.34 mm (112.1 in.)

Part No.	Description	Qty.
T1U2407	Center Auxiliary (3 PB125400 Bolts/Nuts)	2
T3G6395	End (3 PB125400 Bolts/Nuts)	2
T1U1897	Optional End (3 PB125400 Bolts/Nuts)	2

966D / 966E / 966F – 3040.38 mm (119.7 in.)

Part No.	Description	Qty.
T1U0593	Center Auxiliary (3 PB125400 Bolts/Nuts)	2
T3G6395	End (3 PB125400 Bolts/Nuts)	2
T1U1897	Optional End (3 PB125400 Bolts/Nuts)	2
T4T6699	Segments (2 PB125400 Bolts/Nuts)	7

966D / 966E / 966F – 2921 mm (115 in.)

Part No.	Description	Qty.
T1U1909	Center Auxiliary (3 PB125400 Bolts/Nuts)	2
T3G6395	End (3 PB125400 Bolts/Nuts)	2
T1U1897	Optional End (3 PB125400 Bolts/Nuts)	2

980C – 3322.32 mm (130.8 in.)

Part No.	Description	Qty.
T1U0762	Center Auxiliary (3 PB125400 Bolts/Nuts)	2
T1U0761	End (3 PB125400 Bolts/Nuts)	2
T1U0764	Optional End (3 PB125400 Bolts/Nuts)	2
T4T6700	Segments (2 PB125400 Bolts/Nuts)	7

988B – 3644.9 mm (143.5 in.)

Part No.	Description	Qty.
T4T6588	Auxiliary (6 PB100325 Bolts/Nuts)	3

Caterpillar Graders

12G (61M11716–) / 120G (87V08135–) / 130G (74V02293–) / 140G (72V09829)

Part No.	Description	Qty.
T9W1764	End Bit (5 PB625225 Bolts/Nuts)	2

112 / 12 / 12G / 112F / 120B / 120G / 140

Part No.	Description	Qty.
T7D2052	End Bit (5 PB625225 Bolts/Nuts)	2

Caterpillar Scrapers

621 (37G / 36V / 68B)

Part No.	Description	Qty.
T4T2896	Center (9 PB100275 Bolts/Nuts)	1
T4T6380	End (5 PB100275 Bolts/Nuts)	2
T4T6380	Router (5 PB100275 Bolts/Nuts)	2

621 (43H) / J619 (43F) / 623 / 627

Part No.	Description	Qty.
T4T2895	Center (10 PB100300 Bolts/Nuts)	1
T4T6380	End (5 PB100300 Bolts/Nuts)	2
T4J8665	Router (5 PB100300 Bolts/Nuts)	2

630B / 631 (11G / 28F) / 637 (64M)

Part No.	Description	Qty.
T4T2900	Center (9 PB100325 Bolts/Nuts)	1
T7J3026	Center (9 PB100325 Bolts/Nuts)	1
T4T6378	End (6 PB100325 Bolts/Nuts)	2
T9W6092	End (6 PB100325 Bolts/Nuts)	2
T4J8665	Router (5 PB100325 Bolts/Nuts)	2

631 (29W / 28W / 1BB) / 637 (23W / 22W / 21W / 20W / 1 LB / 1 HB)

Part No.	Description	Qty.
T4T3444	Center (10 PB100325 Bolts/Nuts)	1
T4T6378	End (6 PB100325 Bolts/Nuts)	2
T4J8665	Router (5 PB100325 Bolts/Nuts)	2

632 / 641 / 64TSA

Part No.	Description	Qty.
T4J8226	Center (10 PB100325 Bolts/Nuts)	1
T9W6092	End (6 PB100325 Bolts/Nuts)	2
T4J8665	Router (5 PB100325 Bolts/Nuts)	2

Gannon Box Scraper

Part No.	Description	Qty.
TE04021	Center (7 PB625250 Bolts/Nuts)	1

Universal edges

Blades for Universal Applications		
Part No.	Dimensions	Remarks
T144324	12.7 mm x 101.6 mm x 3048 mm (1/2 in. x 4 in. x 120 in.)	SBF
T144325	12.7 mm x 152.4 mm x 3048 mm (1/2 in. x 6 in. x 120 in.)	SBF
T144330	19.05 mm x 152.4 mm x 3048 mm (3/4 in. x 6 in. x 120 in.)	SBF
T144331	19.05 mm x 203.2 mm x 3048 mm (3/4 in. x 8 in. x 120 in.)	SBF
T144332	25.4 mm x 203.2 mm x 3048 mm (1 in. x 8 in. x 120 in.)	SBF
T155674	25.4 mm x 203.2 mm x 3048 mm (1 in. x 8 in. x 120 in.)	SBF
T155675	25.4 mm x 254 mm x 3048 mm (1 in. x 10 in. x 120 in.)	SBF
T147332	31.75 mm x 254 mm x 3048 mm (1 1/4 in. x 10 in. x 120 in.)	SBF
T152330	38.1 mm x 254 mm x 3352.8 mm (1 1/2 in. x 10 in. x 132 in.)	SBF
T159620	38.1 mm x 254 mm x 3657.6 mm (1 1/2 in. x 10 in. x 144 in.)	SBF
T147334	25.4 mm x 203.2 mm x 3048 mm (1 in. x 8 in. x 120 in.)	SBF
T147333	25.4 mm x 254 mm x 254 mm (1 in. x 10 in. x 10 in.)	SBF
T147331	15.88 mm x 152.4 mm x 3048 mm (5/8 in. x 6 in. x 120 in.)	SBF no holes
T144322	19.05 mm x 152.4 mm x 3048 mm (3/4 in. x 6 in. x 120 in.)	SBF no holes
T146133	38.1 mm x 304.8 mm x 3657.6 mm (1 1/2 in. x 12 in. x 144 in.)	SBF no holes
T144326	12.7 mm x 152.4 mm x 3048 mm (1/2 in. x 6 in. x 120 in.)	DBF
T144327	15.88 mm x 152.4 mm x 3048 mm (5/8 in. x 6 in. x 120 in.)	DBF
T144328	19.05 mm x 203.2 mm x 3048 mm (3/4 in. x 8 in. x 120 in.)	DBF
T144329	25.4 mm x 254 mm x 3048 mm (1 in. x 10 in. x 120 in.)	DBF
T144580	19.05–31.75 mm x 203.2 mm x 3048 mm (3/4–1 1/4 in. x 8 in. x 120 in.)	ASF no holes
T148452	28.58–57.15 mm x 254 mm x 3657.6 mm (1 1/8–2 1/4 in. x 10 in. x 144 in.)	ASF no holes
T159916	28.58 mm x 330.2 mm x 762 mm (1 1/8 in. x 13 in. x 30 in.)	DBF
T159917	28.58 mm x 330.2 mm x 812.8 mm (1 1/8 in. x 13 in. x 32 in.)	DBF
T147931	28.58 mm x 330.2 mm x 914.4 mm (1 1/8 in. x 13 in. x 36 in.)	DBF

Blades for Universal Applications (continued)		
Part No.	Dimensions	Remarks
T148082	28.58 mm x 330.2 mm x 1066.8 mm (1 1/8 in. x 13 in. x 42 in.)	DBF
T147932	28.58 mm x 330.2 mm x 1219.2 mm (1 1/8 in. x 13 in. x 48 in.)	DBF
Universal Excavator Edges		
Part No.	Dimensions	Remarks
AT131088	25.4 mm x 203.2 mm x 1524 mm (1 in. x 8 in. x 60 in.)	CTL
AT131089	25.4 mm x 203.2 mm x 1828.8 mm (1 in. x 8 in. x 72 in.)	CTL
T148753	31.75 mm x 254 mm x 947.74 mm (1 1/4 in. x 10 in. x 37 5/16 in.)	CTL
AT131081	31.75 mm x 254 mm x 1524 mm (1 1/4 in. x 10 in. x 60 in.)	CTL
AT131082	38.1 mm x 254 mm x 1219.2 mm (1 1/2 in. x 10 in. x 48 in.)	CTL
AT131090	38.1 mm x 304.8 mm x 1524 mm (1 1/2 in. x 12 in. x 60 in.)	CTL
AT131097	50.8 mm x 304.8 mm x 1828.8 mm (2 in. x 12 in. x 72 in.)	CTL
T154188	50.8 mm x 304.8 mm x 914.4 mm (2 in. x 12 in. x 36 in.)	CTL
T154189	50.8 mm x 304.8 mm x 1066.8 mm (2 in. x 12 in. x 42 in.)	CTL
AT131096	63.5 mm x 336.55 mm x 1371.6 mm (2 1/2 in. x 13 1/4 in. x 54 in.)	CTL
AT131098	63.5 mm x 381 mm x 1828.8 mm (2 1/2 in. x 15 in. x 72 in.)	CTL
T144322	19.05 mm x 152.4 mm x 3048 mm (3/4 in. x 6 in. x 120 in.)	CTL

Bolts

Grade 8 Plow Bolts with Nuts

Part No.	Bolt Size	Qty. Per Package	Box Weight	Caterpillar No. (Bolt Only)
PB500275	12.7 mm x 69.85 mm (1/2 in. x 2 3/4 in.)	125	9.5 kg (21 lb.)	—
PB500300	12.7 mm x 76.2 mm (1/2 in. x 3 in.)	100	8.6 kg (19 lb.)	—
PB625200	15.88 mm x 50.8 mm (5/8 in. x 2 in.)	100	11.8 kg (26 lb.)	4F3654
PB625225	15.88 mm x 57.15 mm (5/8 in. x 2 1/4 in.)	100	12.7 kg (28 lb.)	3F5108
PB625250	15.88 mm x 63.5 mm (5/8 in. x 2 1/2 in.)	90	11.8 kg (26 lb.)	4F3656
PB625300	15.88 mm x 76.2 mm (5/8 in. x 3 in.)	80	12.7 kg (28 lb.)	4F3658
PB625350	15.88 mm x 88.9 mm (5/8 in. x 3 1/2 in.)	65	11.8 kg (26 lb.)	4F3665
PB625400	15.88 mm x 101.6 mm (5/8 in. x 4 in.)	50	8.6 kg (19 lb.)	4F3671
PB750225	19.05 mm x 57.15 mm (3/4 in. x 2 1/4 in.)	70	13.6 kg (30 lb.)	4F7827
PB750250	19.05 mm x 63.5 mm (3/4 in. x 2 1/2 in.)	60	12.25 kg (27 lb.)	5J4773
PB750275	19.05 mm x 69.85 mm (3/4 in. x 2 3/4 in.)	50	10.9 kg (24 lb.)	5J4771
PB750300*	19.05 mm x 76.2 mm (3/4 in. x 3 in.)	50	11.3 kg (25 lb.)	—
PB750350	19.05 mm x 88.9 mm (3/4 in. x 3 1/2 in.)	40	10.4 kg (23 lb.)	—
PB750400	19.05 mm x 101.6 mm (3/4 in. x 4 in.)	30	9.0 kg (20 lb.)	—
PB875275	22.23 mm x 69.85 mm (7/8 in. x 2 3/4 in.)	40	9.0 kg (20 lb.)	6F0196

*PB750300 equals 19.05-mm (.75 in.) diameter, 76.2-mm (3 in.) length.

Grade 8 Plow Bolts with Nuts (continued)

Part No.	Bolt Size	Qty. Per Package	Box Weight	Caterpillar No. (Bolt Only)
PB875300	22.23 mm x 76.2 mm (7/8 in. x 3 in.)	30	10.4 kg (23 lb.)	5J2409
PB875350	22.23 mm x 88.9 mm (7/8 in. x 3 1/2 in.)	25	9.5 kg (21 lb.)	2J2548
PB875375	22.23 mm x 95.25 mm (7/8 in. x 3 3/4 in.)	25	10.0 kg (22 lb.)	—
PB875400	22.23 mm x 101.6 mm (7/8 in. x 4 in.)	25	10.4 kg (23 lb.)	—
PB100275	25.4 mm x 69.85 mm (1 in. x 2 3/4 in.)	30	13.6 kg (30 lb.)	1J5607
PB100300	25.4 mm x 76.2 mm (1 in. x 3 in.)	25	11.3 kg (25 lb.)	4F4042
PB100325	25.4 mm x 82.55 mm (1 in. x 3 1/4 in.)	25	12.25 kg (27 lb.)	4J9058
PB100350	25.4 mm x 88.9 mm (1 in. x 3 1/2 in.)	20	10.4 kg (23 lb.)	4J9208
PB100375	25.4 mm x 95.25 mm (1 in. x 3 3/4 in.)	20	10.9 kg (24 lb.)	—
PB100400	25.4 mm x 101.6 mm (1 in. x 4 in.)	20	11.3 kg (25 lb.)	5P8136
PB100450	25.4 mm x 114.3 mm (1 in. x 4 1/2 in.)	15	9.0 kg (20 lb.)	—
PB125375	31.75 mm x 95.25 mm (1 1/4 in. x 3 3/4 in.)	20	19.0 kg (42 lb.)	626535
PB125400	31.75 mm x 101.6 mm (1 1/4 in. x 4 in.)	20	19.5 kg (43 lb.)	—
PB125450	31.75 mm x 114.3 mm (1 1/4 in. x 4 1/2 in.)	20	21.3 kg (47 lb.)	628360
PB125500	31.75 mm x 127 mm (1 1/4 in. x 5 in.)	15	17.7 kg (39 lb.)	—

Bolts

Hardened Flat Washers					
Part No.	Bolt Diameter	Qty. Per Package	I.D.	O.D	Thickness
T21242	12.7 mm (1/2 in.)	5	13.46 mm (0.53 in.)	25.4 mm (1.00 in.)	3.05 mm (0.12 in.)
T27795	15.88 mm (5/8 in.)	1	14.22 mm (0.56 in.)	25.4 mm (1.00 in.)	6.35 mm (0.25 in.)
T83426	19.05 mm (3/4 in.)	2	19.81 mm (0.78 in.)	35.05 mm (1.38 in.)	6.35 mm (0.25 in.)
T56006	22.23 mm (7/8 in.)	5	23.88 mm (0.94 in.)	44.45 mm (1.75 in.)	6.35 mm (0.25 in.)
T30636	25.4 mm (1 in.)	12	26.16 mm (1.03 in.)	44.45 mm (1.75 in.)	6.35 mm (0.25 in.)
T24510	31.75 mm (1 1/4 in.)	2	33.27 mm (1.31 in.)	57.15 mm (2.25 in.)	4.83 mm (0.19 in.)